

# Geography Guidance

## Converting Shapefiles to MapInfo format

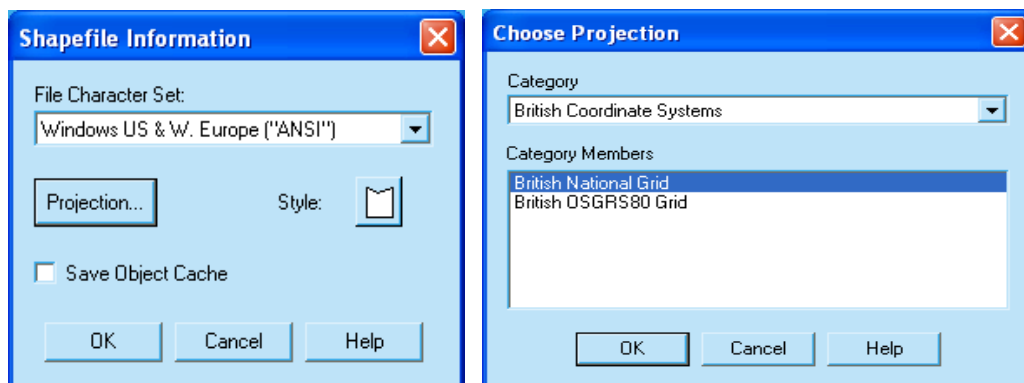
If you are a MapInfo user, it is possible to load the ESRI shapefiles for use or to transform them yourself.

This can be done in 2 ways.

Using the menu option **File>Open**

This option requires the user to specify a projection.

1. Within MapInfo navigate to menu option **File>Open** and set the 'Files of Type' to **ESRI Shapefile**.
2. Browse to and select the **Source file**. Press **Open**.
3. The 'please specify a TAB filename' dialogue appears.
4. Save the TAB file to your **Destination Directory** by browsing to appropriate place.
5. The '**Shapefile Information**' dialogue appears, select **Projection**.



6. In the '**Choose Projection**' dialogue, change the category to '**British Co-ordinate Systems**' and the category members to '**British National Grid**'. Press **OK**.
7. Press **OK** in the '**Shapefile Information**' dialogue. A boundary appears.
8. Go to menu option **Map>View Entire Layer**.
9. Choose layer from dropdown menu and press **OK**. The full extent of the map is displayed.
10. Go to menu option **Window>New Browser Window** and select layer, press **OK**.
11. Go to menu option **Table>Export**, select layer and save the MIF to your **Destination Directory** by browsing to appropriate place.

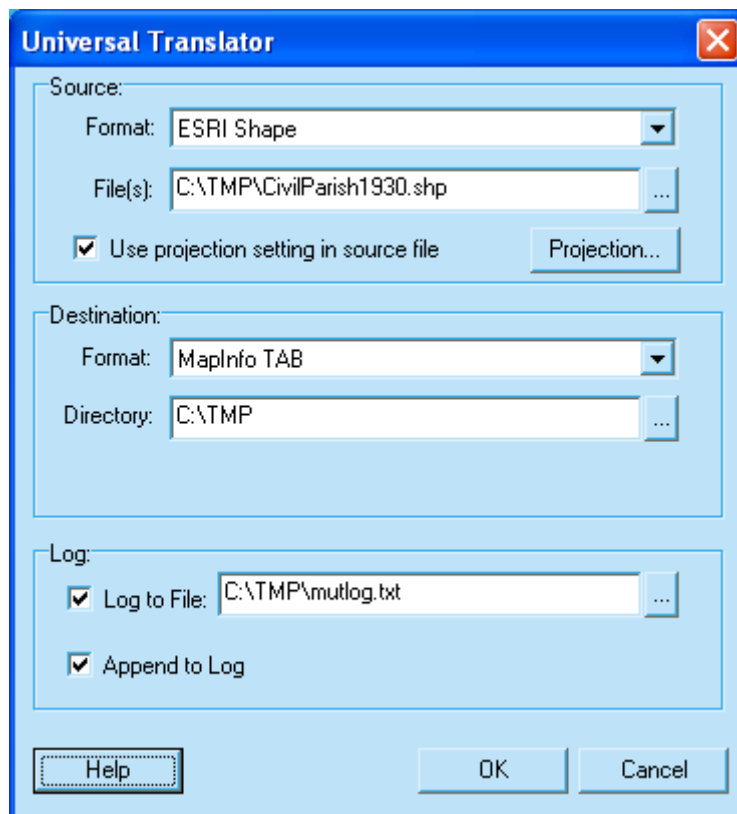
# Geography Guidance

## Converting Shapefiles to MapInfo format

Use the menu option **Universal Translator**

This option will pick up the projection information in the shapefile.

1. Within MapInfo navigate to menu option **Tools>Universal Translator**.
2. In the '**Universal Translator**' dialogue, set the Source Format to **ESRI Shape**.
3. Browse to and select the **Source Files**.  
You can batch convert by selecting multiple files.
4. Set the Destination Format to **MapInfo TAB**.
5. Specify the **Destination Directory** by browsing to appropriate place.



6. Press **OK**, you will receive a Translation successful message.
7. You can now open the generated MapInfo tab file using the MapInfo menu option **File>Open**.