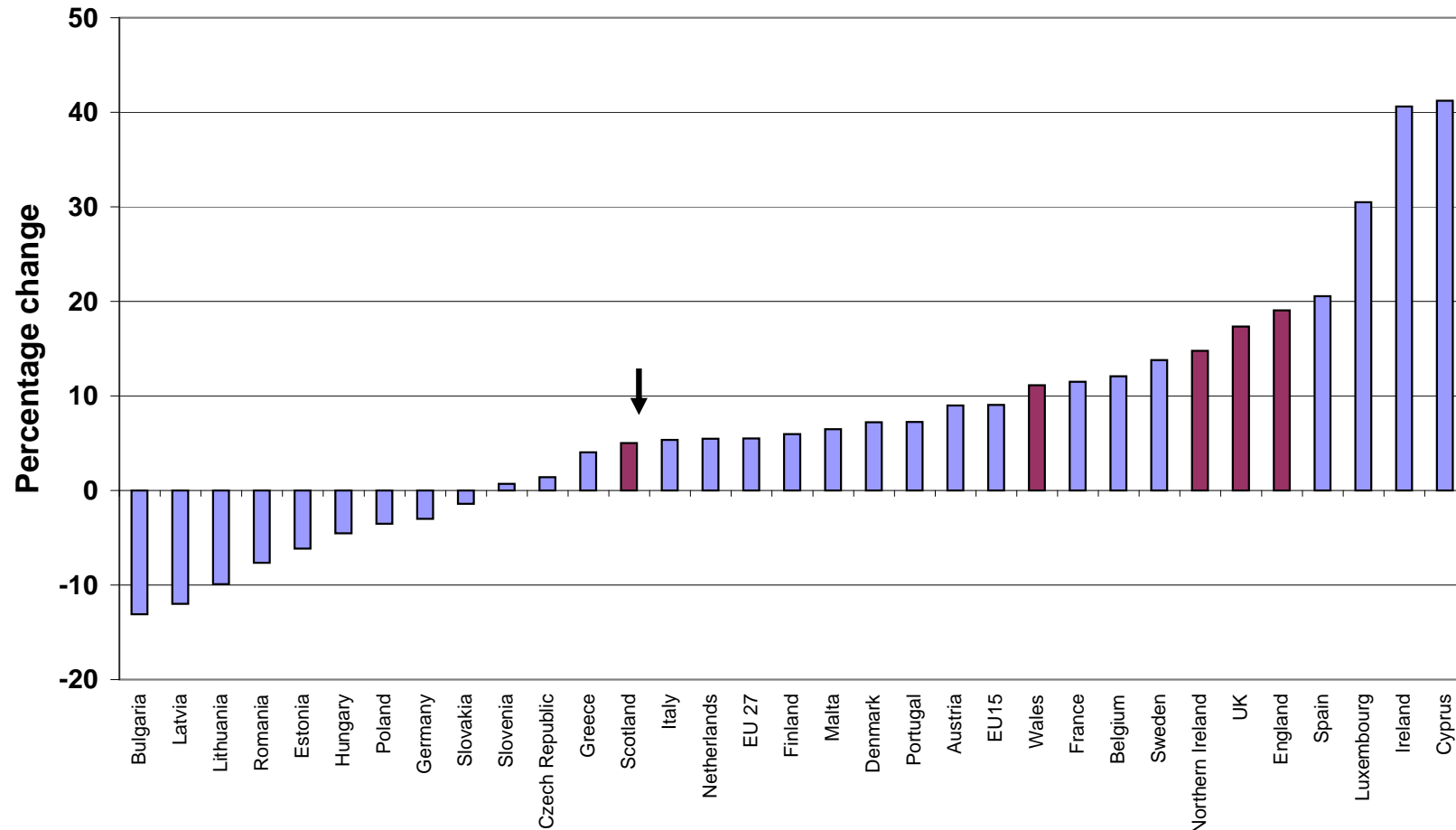


Annual Review 2008 - Chapter 1 Population

Figure 1.9 Projected percentage population change in selected European countries 2006-2031



Source: ONS (UK and constituent countries) and Eurostat. Projections for the UK and its constituent countries are 2006-based whilst Eurostat projections are 2008 based. As a result Eurostat population estimates for 2006 have been used to allow comparison between 2006 and 2031 throughout. See "Appendix 2 - Notes and Definitions" for definition of EU15 and EU27.