

Scotland's Census

Quality Assurance Outline

Census Management Branch

November 2012

Overview

- ▶ Preliminary stages
- ▶ Quality assurance of population and household estimates
- ▶ Dissemination of results of quality assurance
- ▶ Quality assurance of further releases

Development of methods

- ▶ Carried out agreed series of simple univariate checks at early stages.
- ▶ Benefits of early sight of data was that feedback could be provided to processing team
- ▶ Developed systems and tools to be used throughout process and for dissemination of quality information

What did we find?

- ▶ Processing had missed out some variables – back to the beginning
- ▶ What we expected - respondents don't do what you always expect
- ▶ Initial findings raised issues with coding and ways in which some questions were answered

Individual questions 2011

4 On the 27 March 2011, what is your legal marital or same-sex civil partnership status?

- Never married and never registered a same-sex civil partnership
- Married
- Separated, but still legally married
- Divorced
- Widowed
- In a registered same-sex civil partnership
- Separated, but still legally in a same-sex civil partnership
- Formerly in a same-sex civil partnership which is now legally dissolved
- Surviving partner from a same-sex civil partnership

Individual questions 2011

5 Are you a schoolchild or student in full-time education?

Yes

No → Go to **7**

6 During term-time, do you live:

at the address on the front of this questionnaire?

at another address? → Go to **38**

What did we do about it?

- ▶ Carried out more in-depth checks, prioritising key data used in first release
- ▶ Analysed data for issues which would cause problems in later processes, in particular edit and imputation
- ▶ Recoded some text responses including ethnic group and language
- ▶ Sometimes nothing – but will need to report quality to users

Implemented Quality Assurance (QA) strategy

- Carried out range of core checks aimed at quality assuring population and household counts – using first cut of estimation data

Core checks

- Age distributions by gender
- Household size
- Implied fertility rates
- Students
- Migration
- Ethnic groups
- Large communals
- Small area counts

Quality Assurance (QA) of other characteristics

- Initial QA of other characteristics at key stages of the process – load and validation, after removal of multiple records and after filter rules
- Further investigations where issues are identified
- Revisiting QA after edit and imputation phase

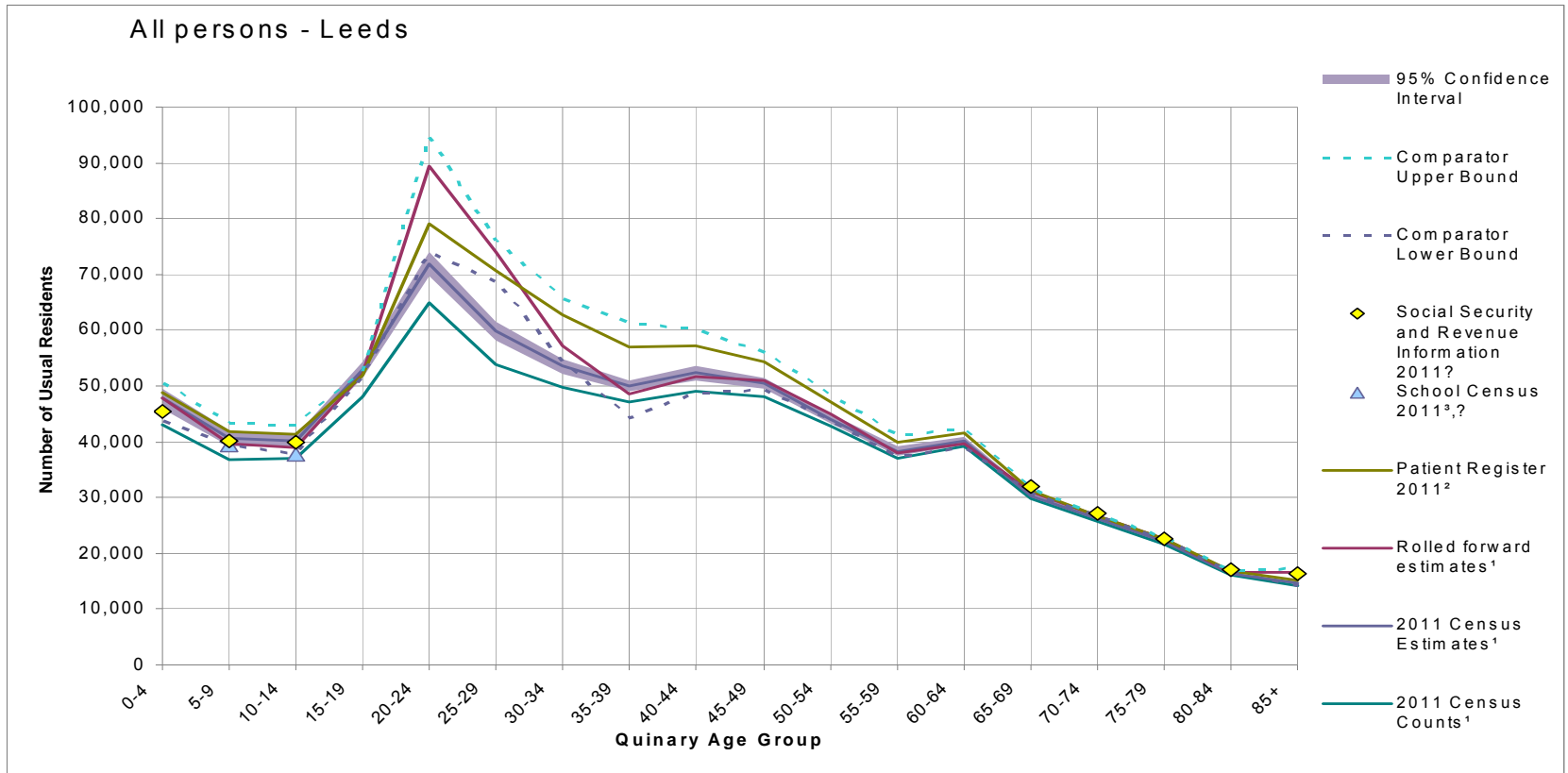
Quality Assurance (QA) panels

- Met with internal quality assurance working group to discuss approach to quality assurance
- External panel
 - provided knowledge and comparator data
 - provide a source of local contact
 - provide insights to National Records of Scotland (NRS) on final results

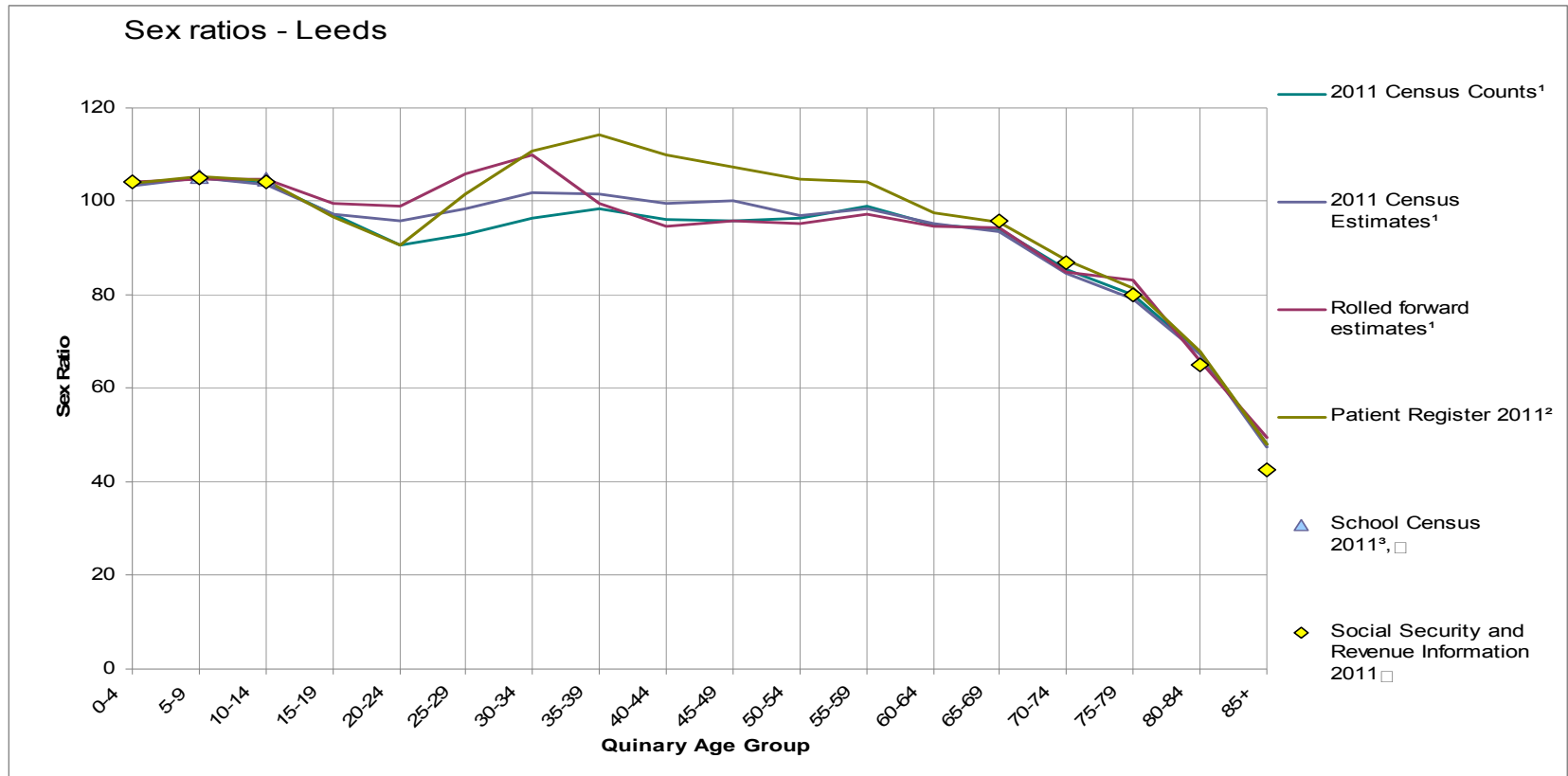
Quality assurance pack

- ▶ To accompany the first release of population and household statistics, Office for National Statistics (ONS) published detailed data used in the quality assurance process
- ▶ NRS are considering using the same tool for publishing QA material relating to the first release.
- ▶ This can be accessed via [ONS website](#)
- ▶ The following slides are extracts from the pack

Results for Leads



Sex ratios in Leeds



Thank You!