

Alternative Headship Rates for Household Projections

1. Background.....	1
2. Alternative headship rates.....	1
3. Scotland Results	1
4. Results for Local Authorities	2
5. Comparing variants and alternative headship rates	2
6. Next Steps	2

1. Background

Household projections use information on household type and age group from the 1991 and 2001 Censuses, projected forward to the end of the projection period. The headship rate is defined as the proportion of people in each age group and household type who are the 'head' of a household. For the most recent 2008-based household projections, changes in household formation patterns between 1991 and 2001 are projected forward to 2033. This method assumes that past trends in household formation will continue, but this may not necessarily be the case. The overall number of households is updated every year, but no information is incorporated on changes in household types between Censuses.

Note: Household Analysis Review Group (HARG) members are asked to consider alternative headship rates for household projections along with other variants and determine which should be prioritised.

2. Alternative headship rates

The effect that projected headship rates have on household projections was investigated with various options being tested.

Option 1 (2001 headship rates): Keep headship rates as they were in 2001 and therefore take no account of any trend from 1991.

Option 2 (Projected 2011 headship rates): Project the trend in headship rates from the 1991 and 2001 Censuses forward to 2011 and then keep rates constant from that point forward.

Option 3 (Mid-Point headship rates): This has been calculated as the mid-point between the projected trend from 1991 and 2001 Census points and the constant 2001 headship rate

Option 4 (SHS adjusted): The method used has been described in the HARG paper "Incorporating Survey Data in Household Projections". The projected proportions of different types of households have been calibrated to Scottish Household Survey proportions.

3. Scotland Results

The principal household projection shows the number of households in Scotland increasing from 2.3 million in 2008 to 2.8 million in 2033. This compares to 2.7 million households where headship rates are kept at 2001 proportions. [Chart 1](#) illustrates these figures, along with results for other alternative headship rates.

[Chart 2](#) compares the projected percentage change in households from 2008 to 2033 for the alternative headship rates. There are projected increases in lone adult and 2 adult households for all alternatives. However, results for larger households are more varied.

[Chart 3](#) compares the projected percentage changes in age groups from 2008 to 2033 for variant projections. All variants show large projected increases in the older age groups. Results for younger age groups are more variable.

4. Results for Local Authorities

Details for individual Local Authorities and Scotland can be seen in [Table 1](#) and [Table 2](#).

For most Local Authorities the projected number of households follows a similar pattern with alternative headship rates always less than the principal household projections for 2033.

For almost all Local Authorities the alternative options for headship rates, reduce the proportion of lone adult households and increase the proportion of multi adult households, with or without children, by 2033. Examples are given in [Chart 4](#) and [Chart 5](#).

5. Comparing variants and alternative headship rates

[Chart 6](#) and [Chart 7](#) compare household projections for all variants and alternative headship rates. In 2033 the projected number of households varies from 2.9 million for the high migration variant to 2.6 million for zero migration.

6. Next Steps

GROS will continue to investigate alternative headship rates along with variant projections to produce a range of household projections. (See HARG 2011 (2). New variant Household Projections)

Note: HARG members are asked to consider alternative headship rates for household projections along with other variants and determine which should be prioritised.

GROS: Household estimates and projections branch
March 2011

Chart 1

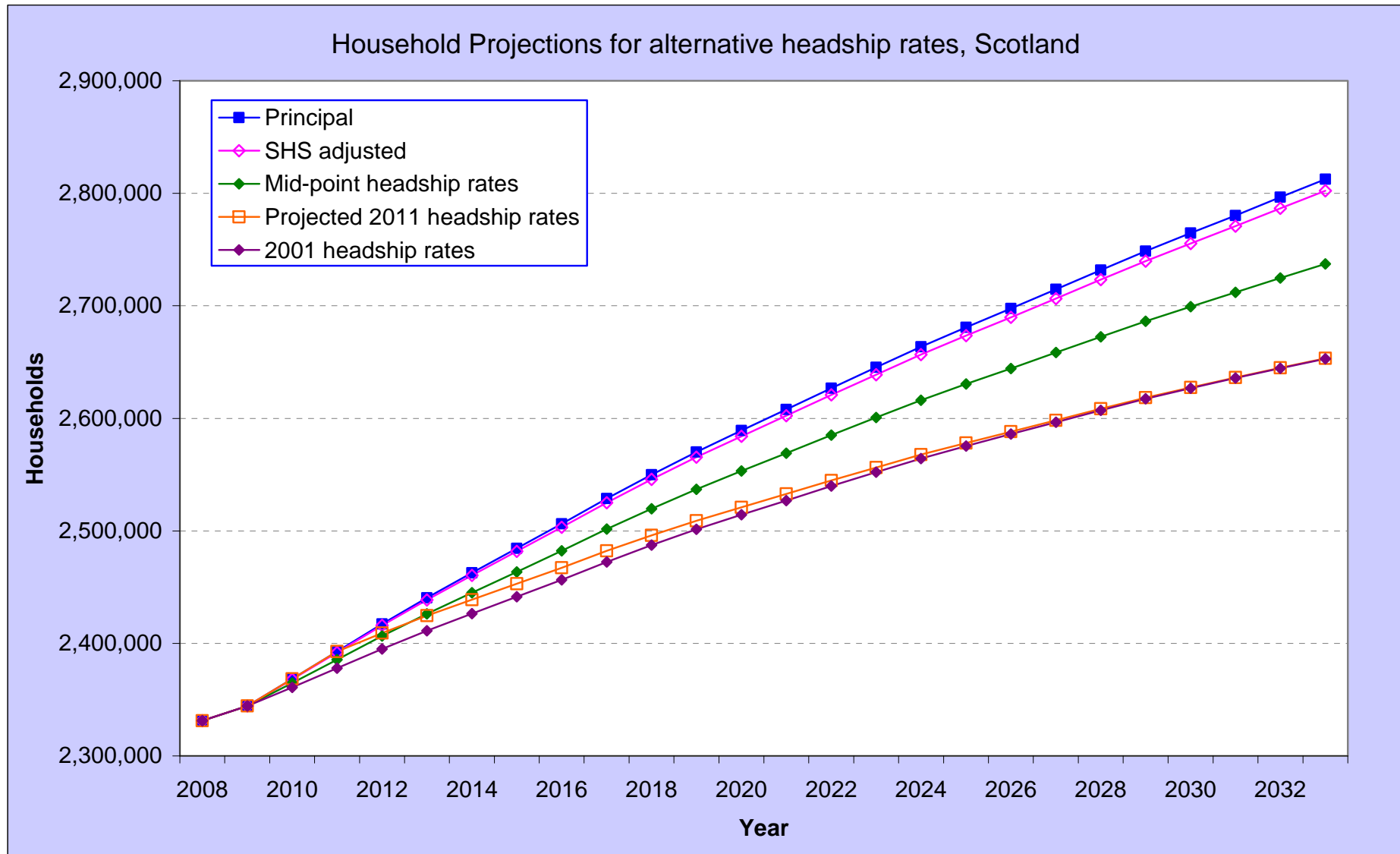


Chart 2

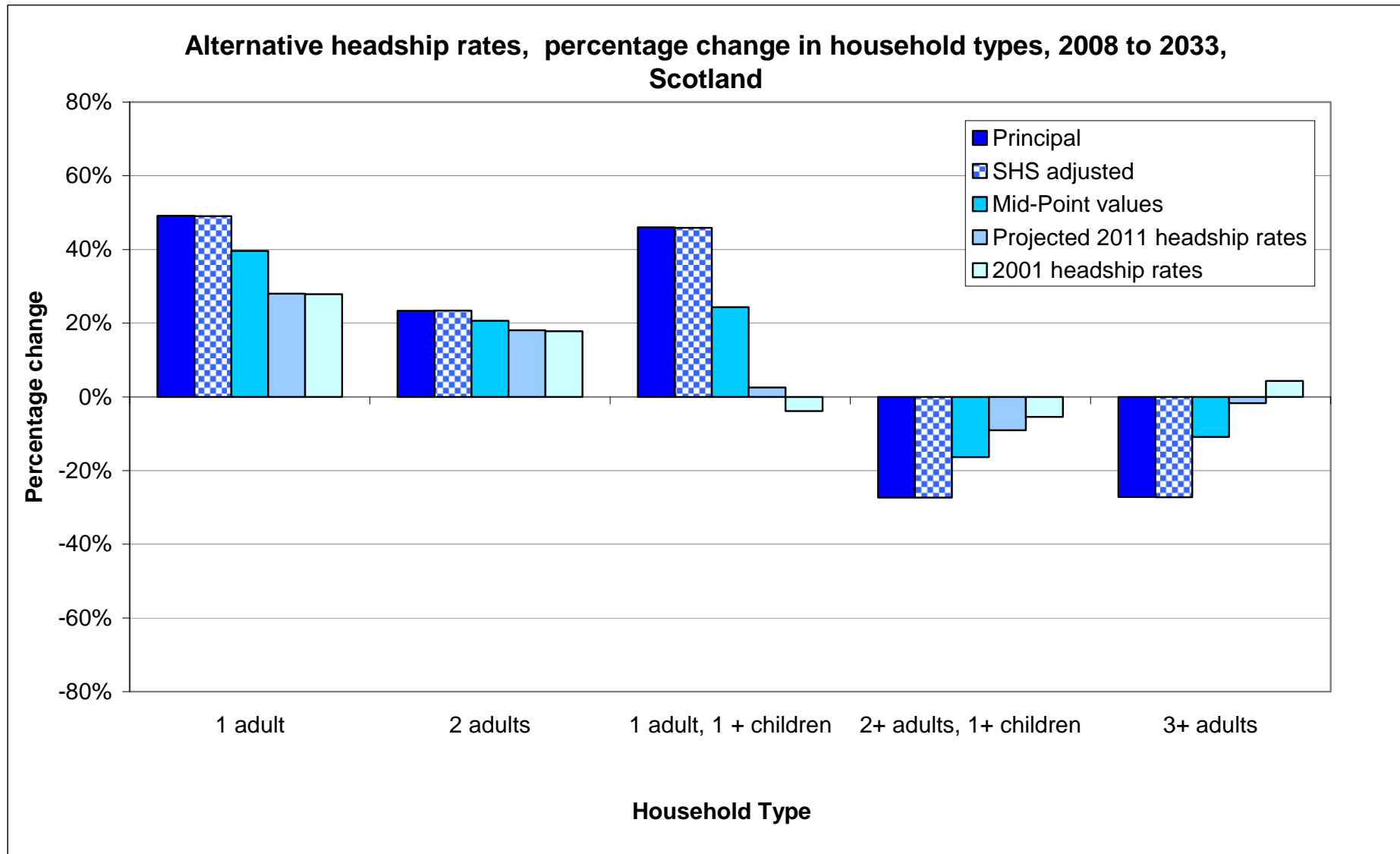


Chart 3

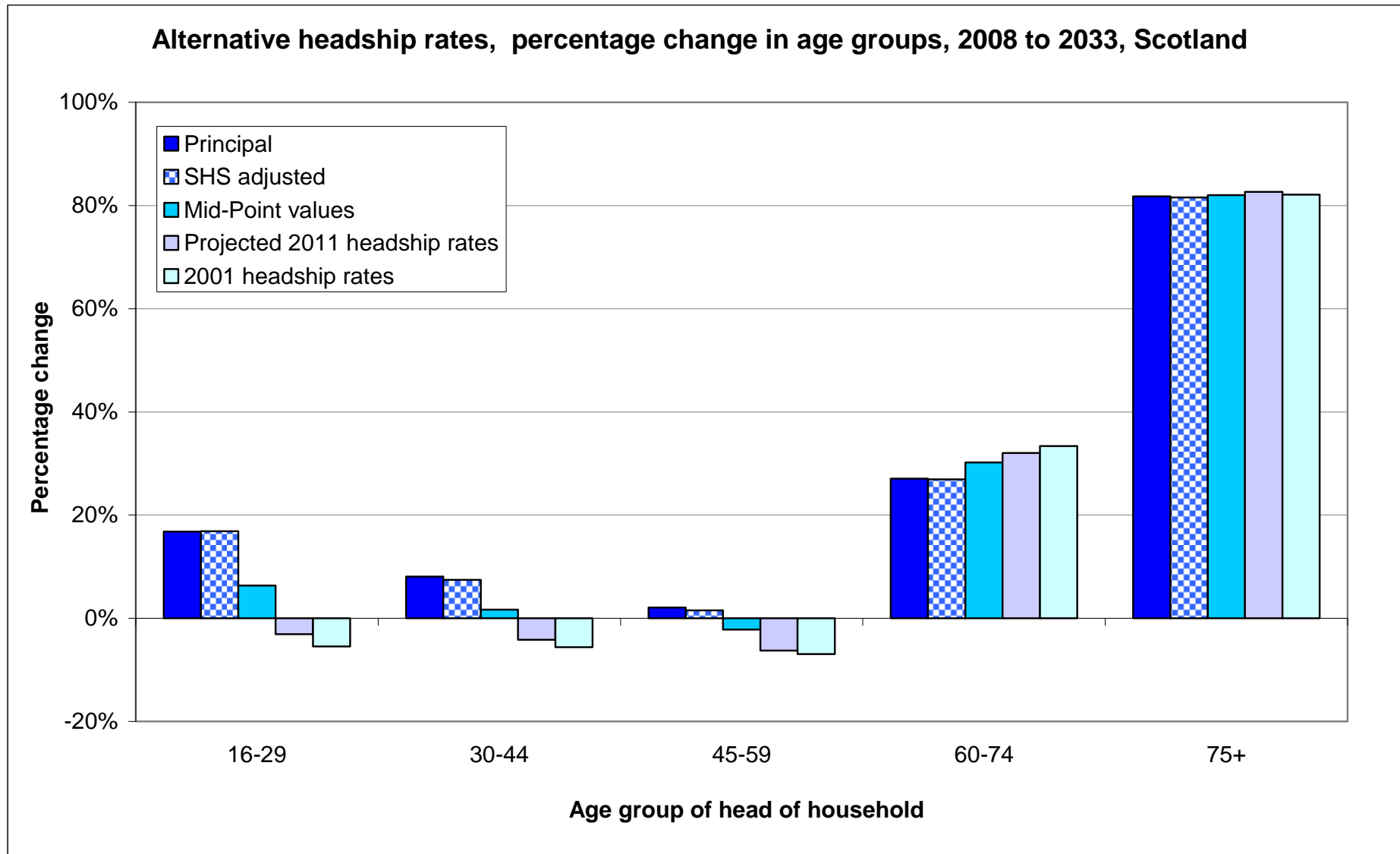


Chart 4

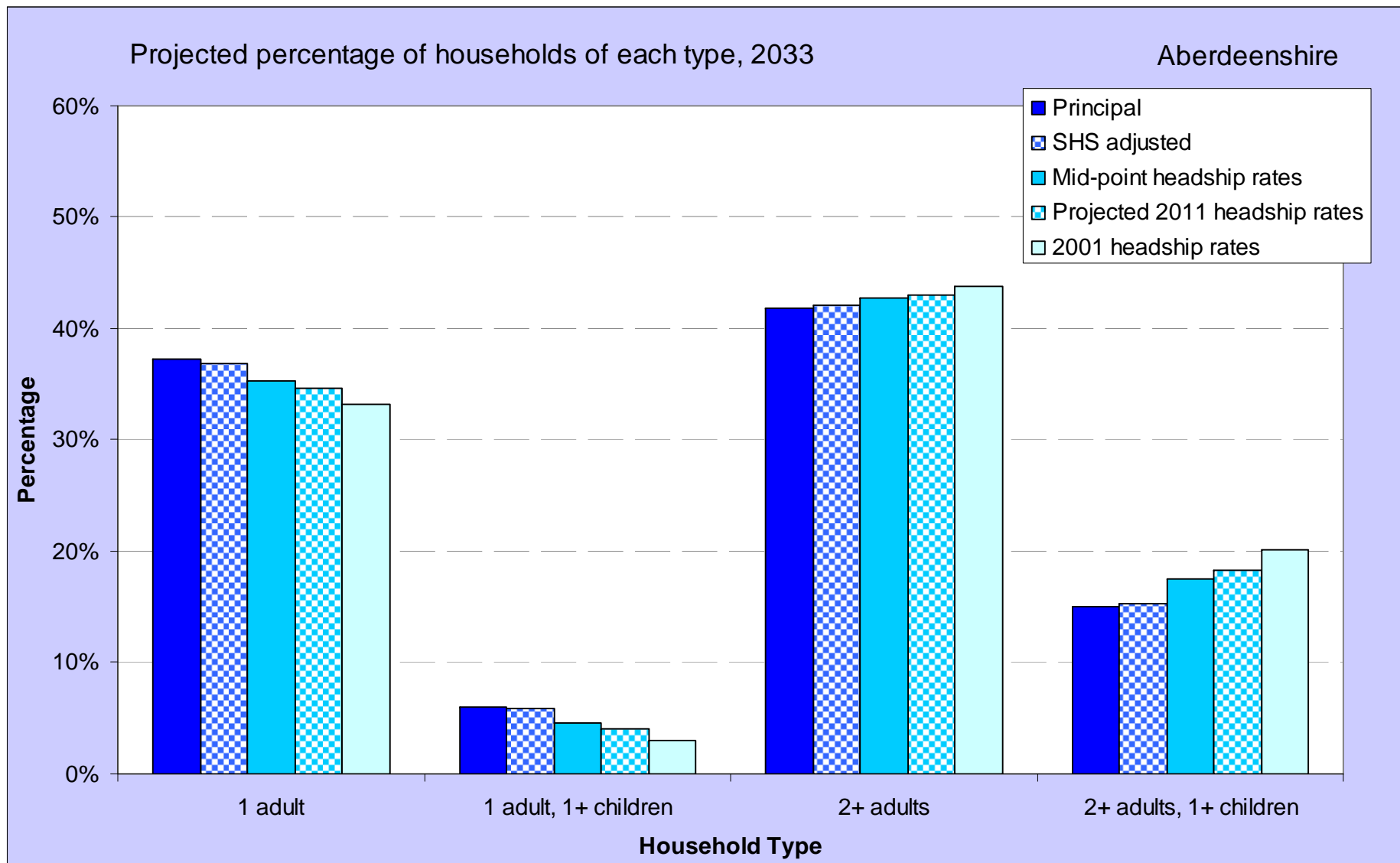


Chart 5

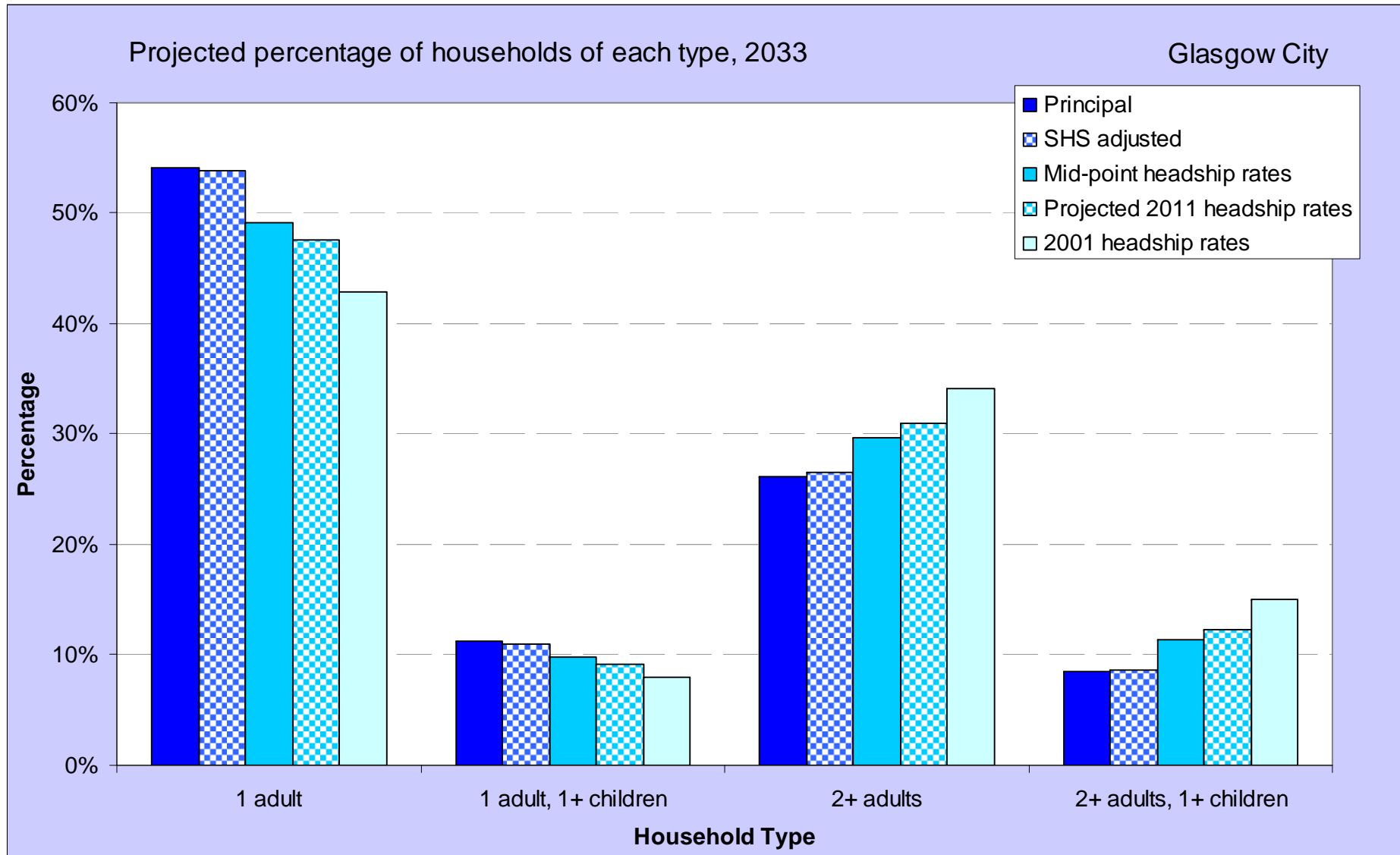


Chart 6

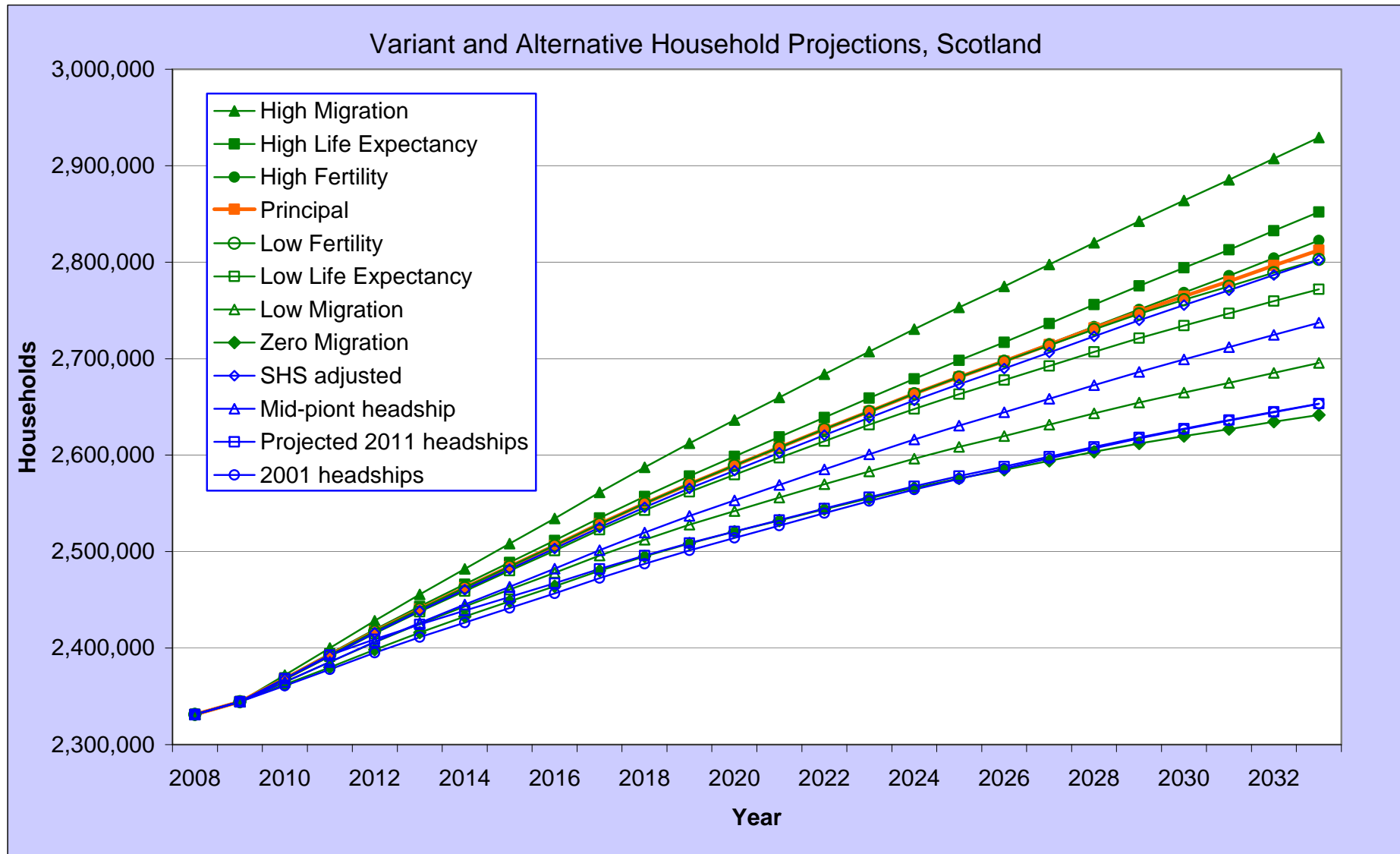


Chart 7

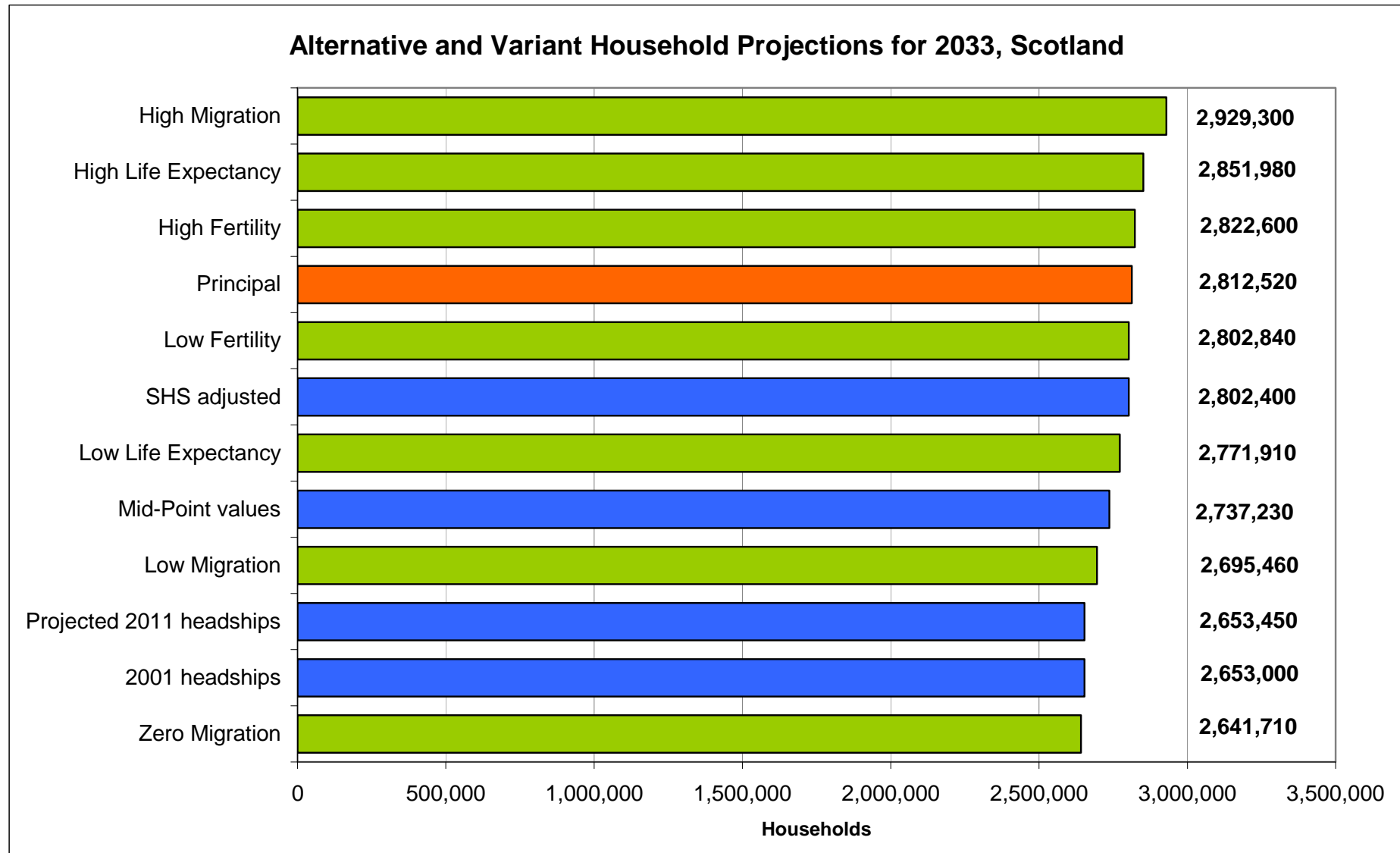


Table 1 - Alternative Headship Rates, Household Projections for 2033, by Local Authority

Local authority	Principal	SHS adjusted	Mid-point headship rates	2011 headship rates	2001 headship rates
Scotland	2,812,517	2,802,399	2,737,231	2,653,451	2,653,001
Aberdeen City	122,067	121,777	118,002	112,886	113,187
Aberdeenshire	137,167	136,532	135,430	133,574	133,609
Angus	59,070	58,838	58,096	56,873	56,960
Argyll & Bute	42,901	42,736	42,442	41,957	41,970
Clackmannanshire	31,920	31,782	30,865	29,680	29,613
Dumfries & Galloway	74,413	74,102	73,126	71,843	71,717
Dundee City	72,285	72,163	70,301	68,135	68,153
East Ayrshire	59,003	58,767	58,155	57,145	57,273
East Dunbartonshire	43,352	43,133	42,747	42,153	42,049
East Lothian	58,798	58,553	57,728	56,422	56,404
	37,668	37,487	37,513	37,243	37,292
East Renfrewshire					
Edinburgh, City of	293,151	292,768	282,391	271,046	270,366
Eilean Siar	13,403	13,346	12,935	12,458	12,417
Falkirk	86,414	86,042	84,075	81,421	81,450
Fife	197,861	197,090	192,674	186,743	186,992
Glasgow City	334,100	333,268	318,970	302,481	301,412
Highland	129,791	129,270	127,080	124,300	124,232
Inverclyde	34,614	34,473	33,946	32,970	33,222
Midlothian	39,563	39,364	38,745	37,839	37,823
Moray	43,482	43,326	43,220	42,776	42,929
	66,809	66,511	65,296	63,555	63,642
North Ayrshire					
North Lanarkshire	168,235	167,392	163,208	157,469	157,623
Orkney Islands	11,981	11,940	11,600	11,244	11,181
Perth & Kinross	89,035	88,710	86,632	84,282	83,992
Renfrewshire	82,792	82,457	80,783	78,397	78,583
Scottish Borders	64,878	64,664	63,750	62,366	62,483
Shetland Islands	11,143	11,095	10,777	10,384	10,372
South Ayrshire	55,392	55,164	54,350	53,167	53,208
South Lanarkshire	165,979	165,183	161,569	156,753	156,820
Stirling	45,095	44,951	43,878	42,629	42,610
West Dunbartonshire	43,058	42,888	41,897	40,527	40,616
West Lothian	97,095	96,627	95,049	92,733	92,801

Table 2 - Alternative Headship Rates, Projected percentage change in households from 2008 to 2033

Local authority	Principal	SHS adjusted	Mid-point headship rates	2011 headship rates	2001 headship rates
Scotland	21%	20%	17%	14%	14%
Aberdeen City	19%	18%	15%	10%	10%
Aberdeenshire	35%	34%	33%	32%	32%
Angus	18%	18%	16%	14%	14%
Argyll & Bute	4%	3%	2%	1%	1%
Clackmannanshire	41%	40%	36%	31%	31%
Dumfries & Galloway	10%	9%	8%	6%	6%
Dundee City	6%	6%	3%	0%	0%
East Ayrshire	11%	11%	10%	8%	8%
East Dunbartonshire	1%	1%	0%	-2%	-2%
East Lothian	40%	40%	38%	35%	35%
East Renfrewshire	6%	5%	5%	5%	5%
Edinburgh, City of	35%	35%	30%	25%	24%
Eilean Siar	13%	13%	9%	5%	5%
Falkirk	27%	27%	24%	20%	20%
Fife	24%	24%	21%	17%	17%
Glasgow City	19%	19%	13%	8%	7%
Highland	30%	30%	27%	25%	25%
Inverclyde	-5%	-6%	-7%	-10%	-9%
Midlothian	16%	15%	13%	11%	11%
Moray	12%	12%	11%	10%	11%
North Ayrshire	9%	8%	6%	3%	3%
North Lanarkshire	17%	17%	14%	10%	10%
Orkney Islands	32%	32%	28%	24%	23%
Perth & Kinross	38%	38%	35%	31%	31%
Renfrewshire	5%	5%	3%	0%	0%
Scottish Borders	27%	26%	24%	22%	22%
Shetland Islands	16%	16%	12%	8%	8%
South Ayrshire	8%	8%	6%	4%	4%
South Lanarkshire	22%	22%	19%	16%	16%
Stirling	20%	20%	17%	14%	13%
West Dunbartonshire	4%	3%	1%	-2%	-2%
West Lothian	34%	34%	32%	28%	28%