

# **Household Analysis Review Group**

## **12 April 2011**

### **Variant Household Projections and Alternative Headship Rates**

NRS: Household Estimates and Projections



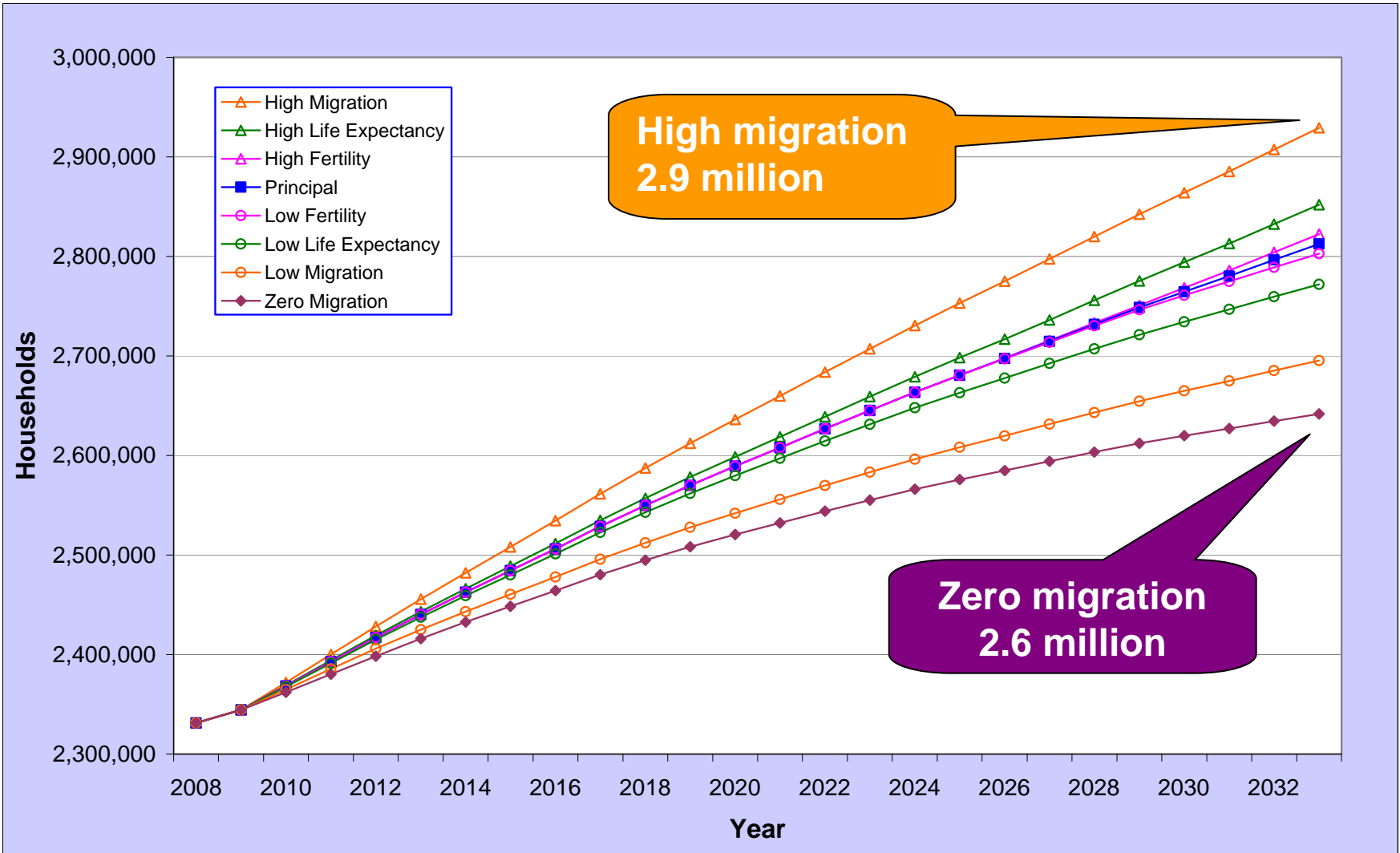
# Variant Household Projections

For the 2008-based household projections both High and Low Migration variants were published.

Further variants are now possible:

- ❖ High and Low Life Expectancy
- ❖ High and Low Fertility
- ❖ Zero Migration

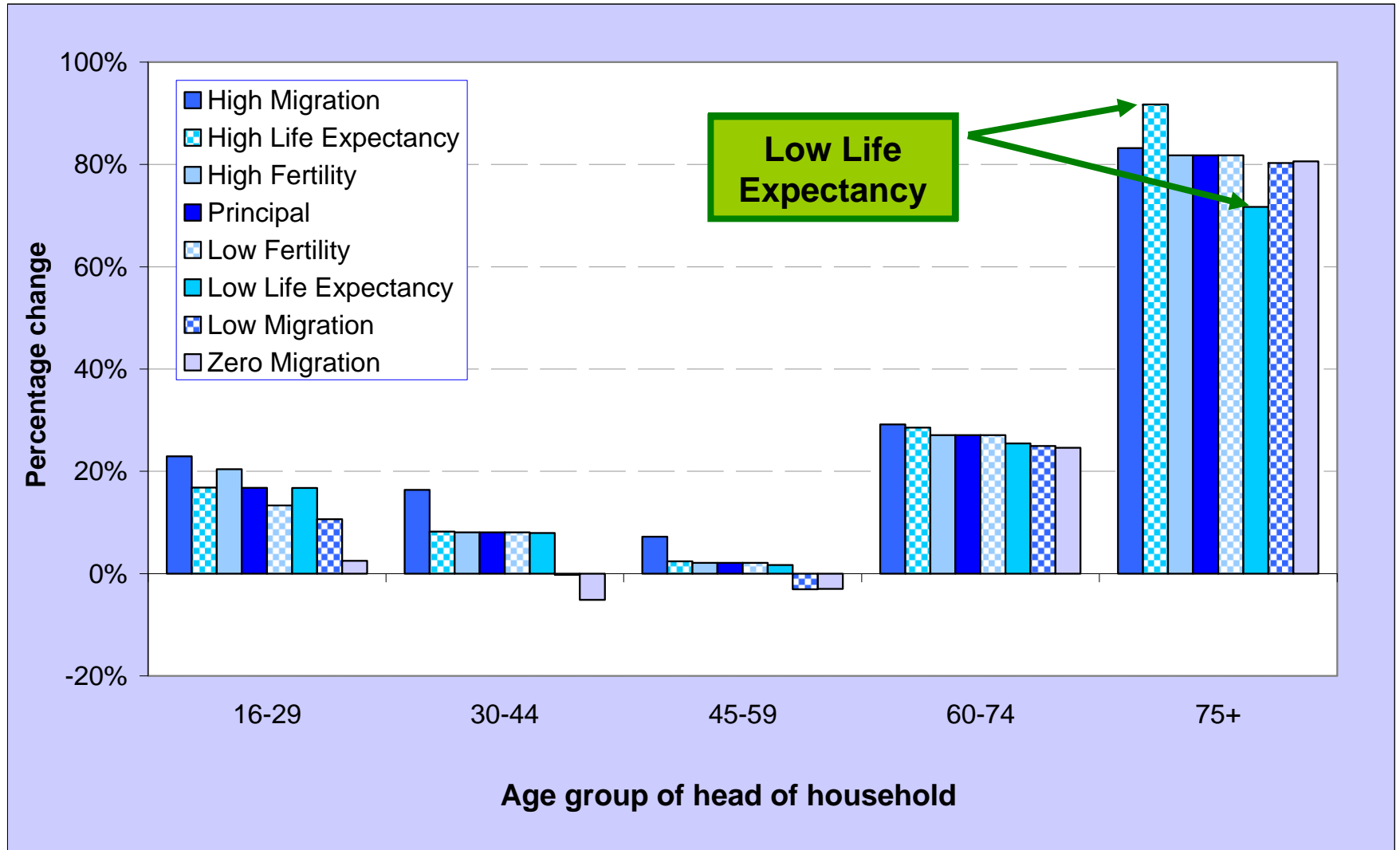
# Variant Household Projections, Scotland



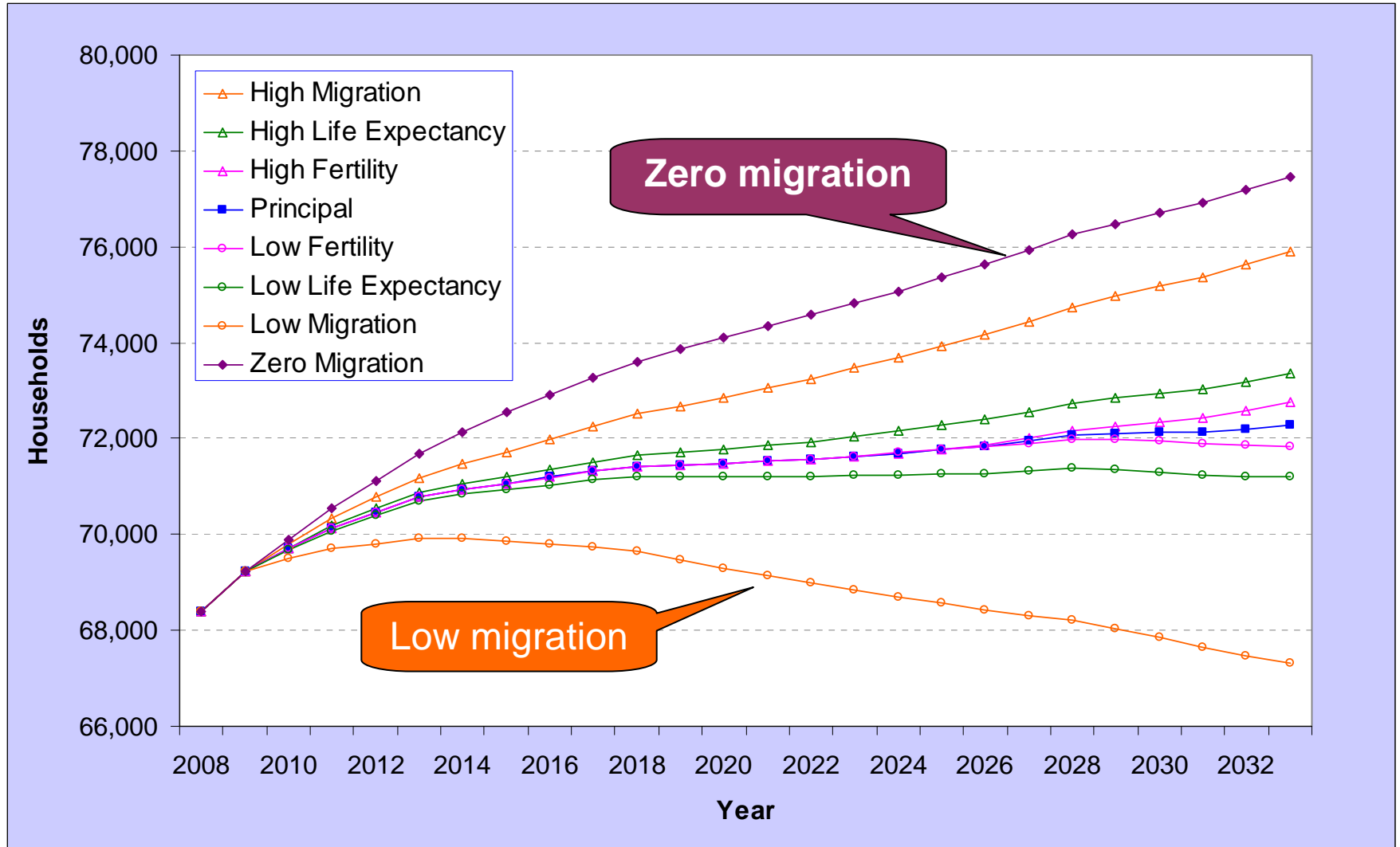




# Percentage change in age groups, 2008 to 2033, Scotland



# Variant Household Projections, Dundee City





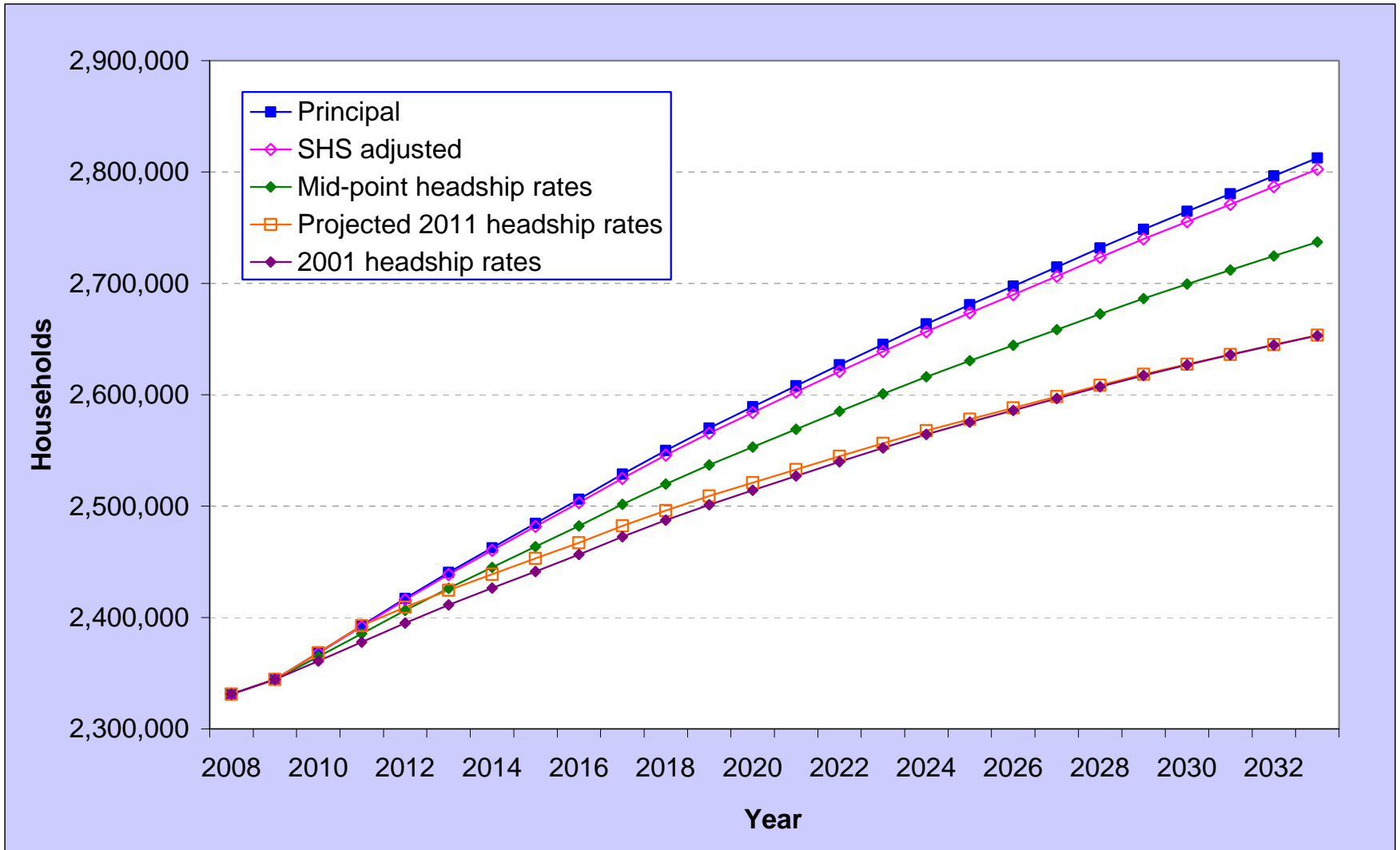
# Alternative headship Rates

The effect that headship rates have on household projections was investigated with various options being tested:

- ❖ Option 1 – Keep constant at 2001 headship rates
- ❖ Option 2 – Project trend to 2011 then keep constant
- ❖ Option 3 – mid-point between the projected trend from 1991 and 2001 Census points and the constant 2001 headship rate
- ❖ Option 4 – household proportions adjusted to Scottish Household Survey smoothed 2006-2008 proportions

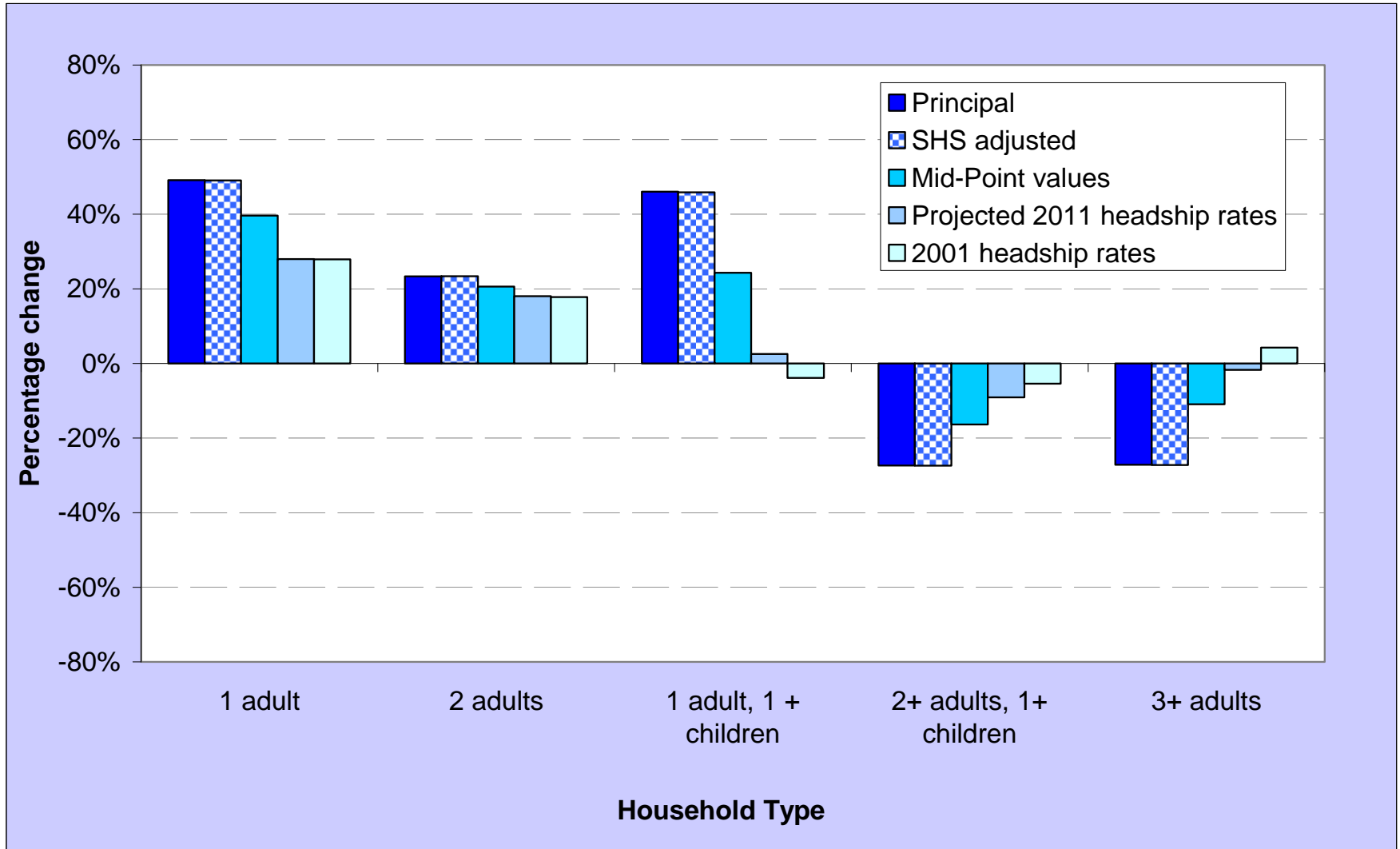


# Alternative Headship Rates, Scotland



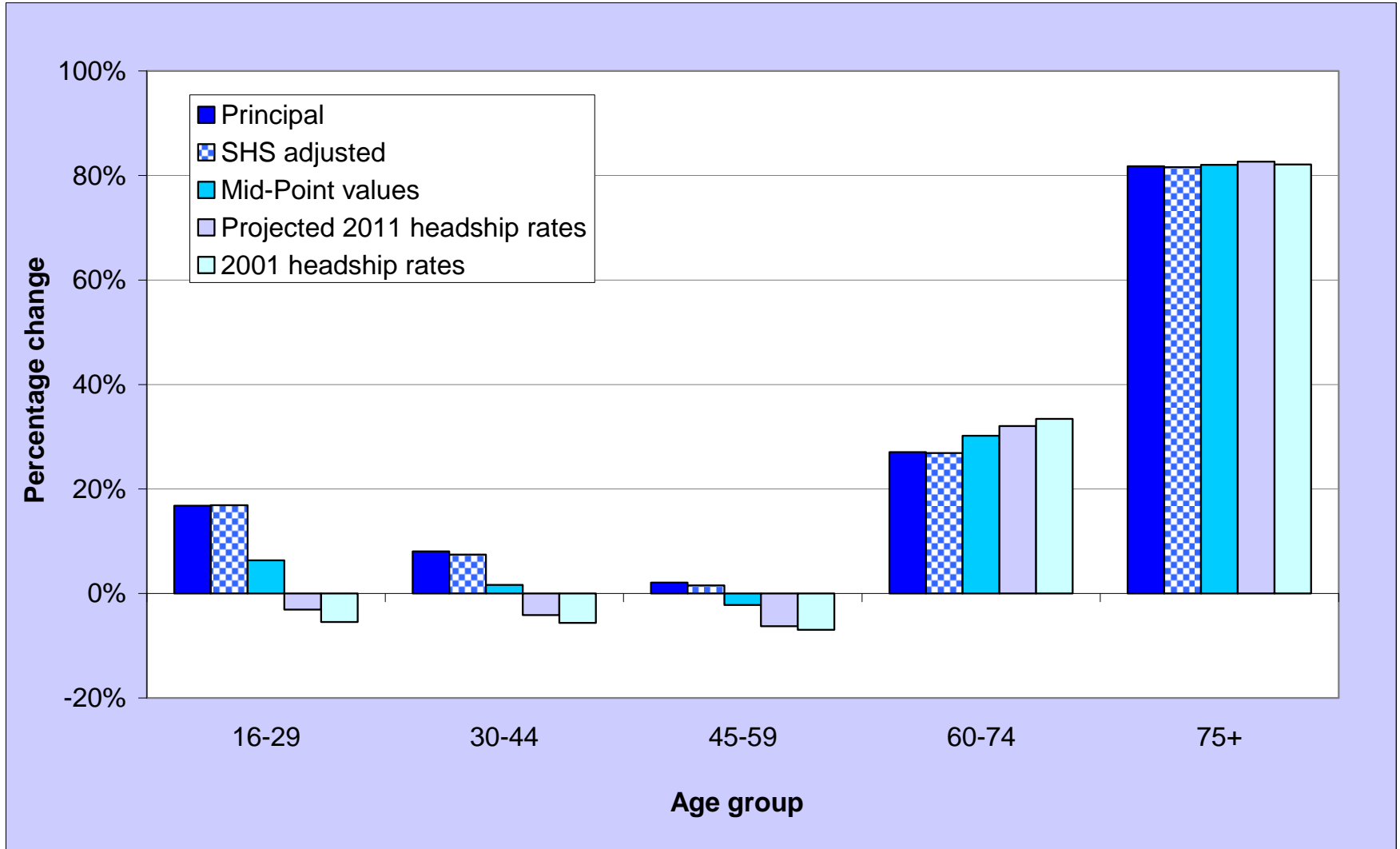


# Percentage change in household types, 2008 to 2033, Scotland



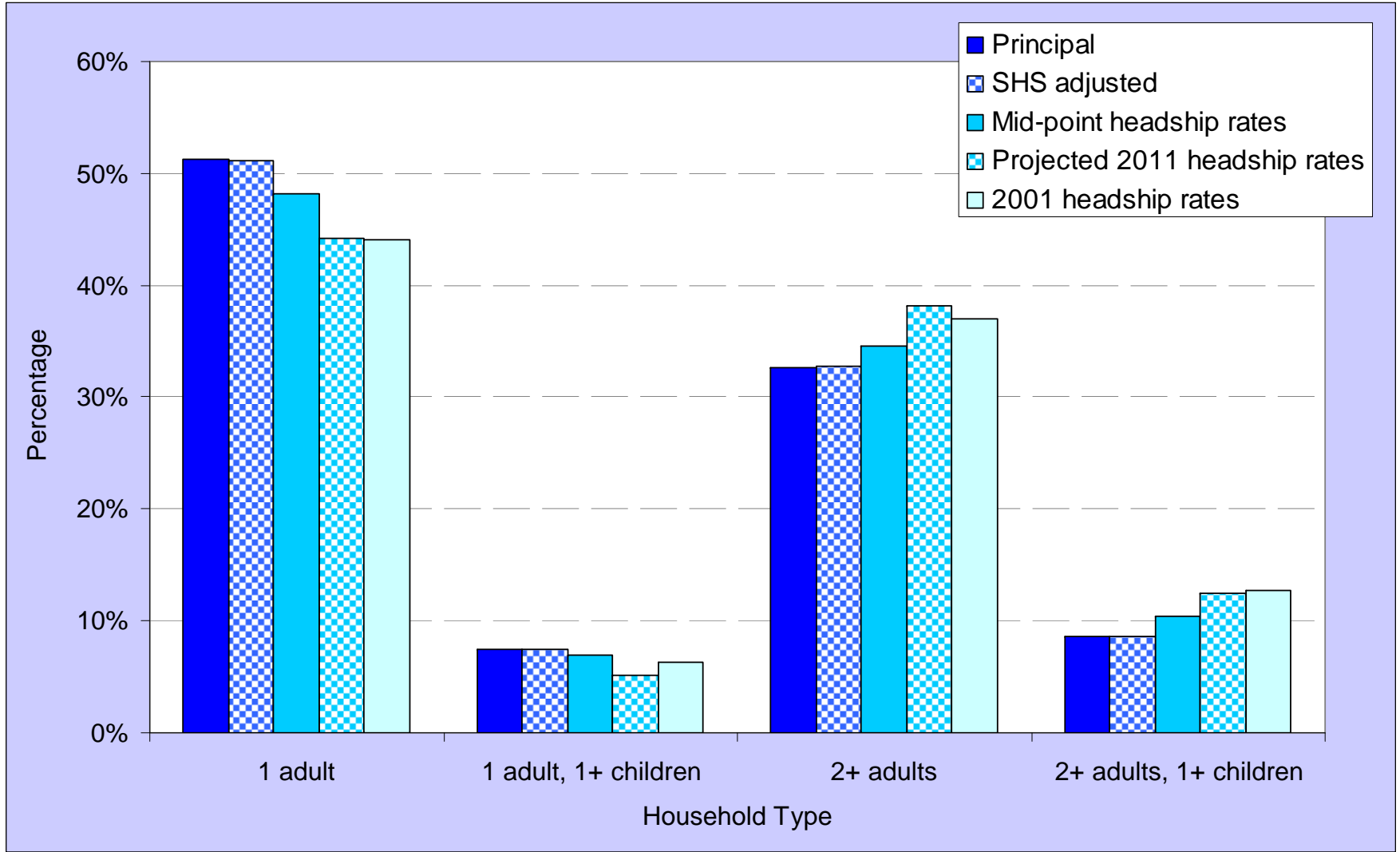


# Percentage change in age groups, 2008 to 2033, Scotland



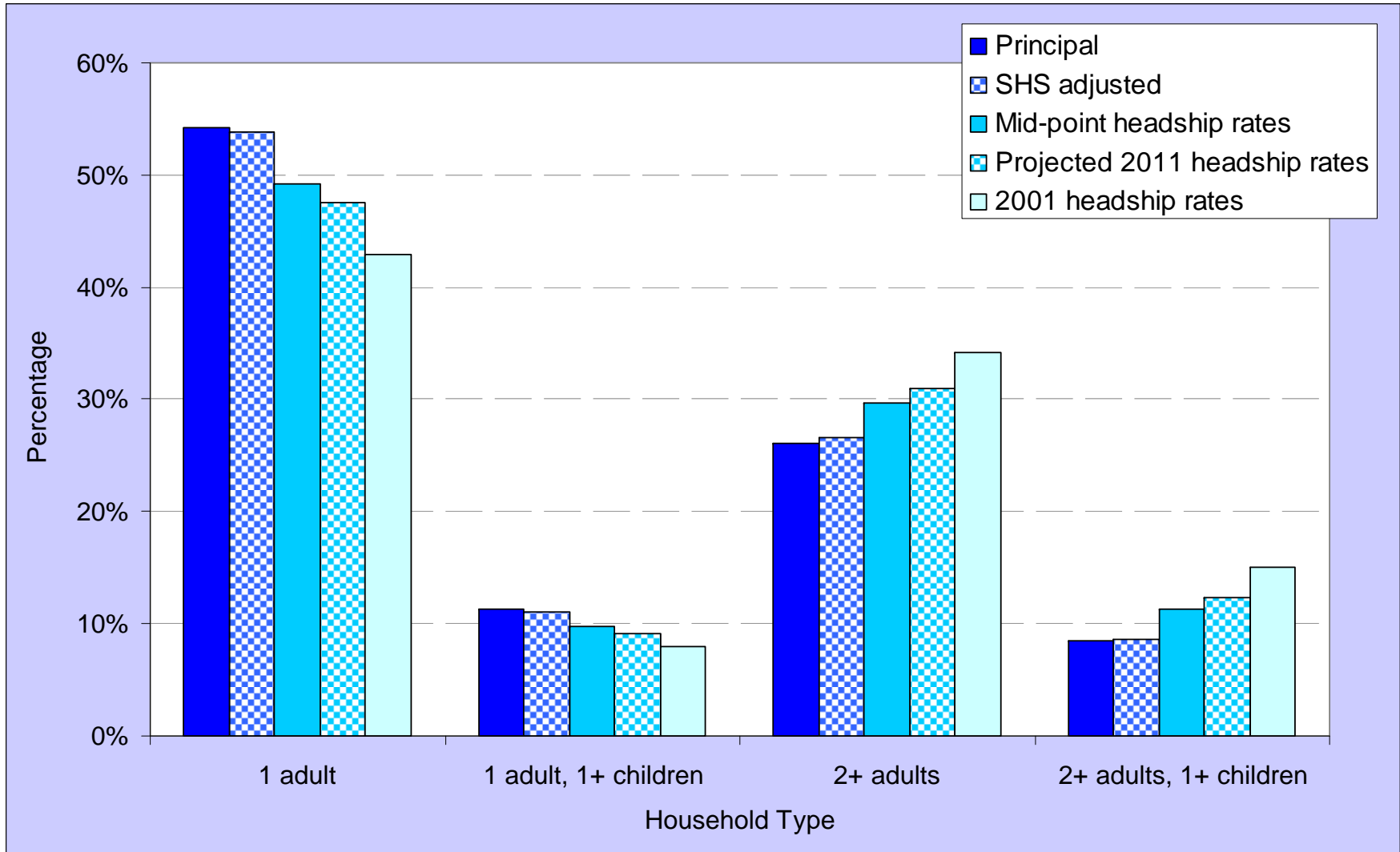


# Projected percentage of households of each type in 2033, Aberdeenshire

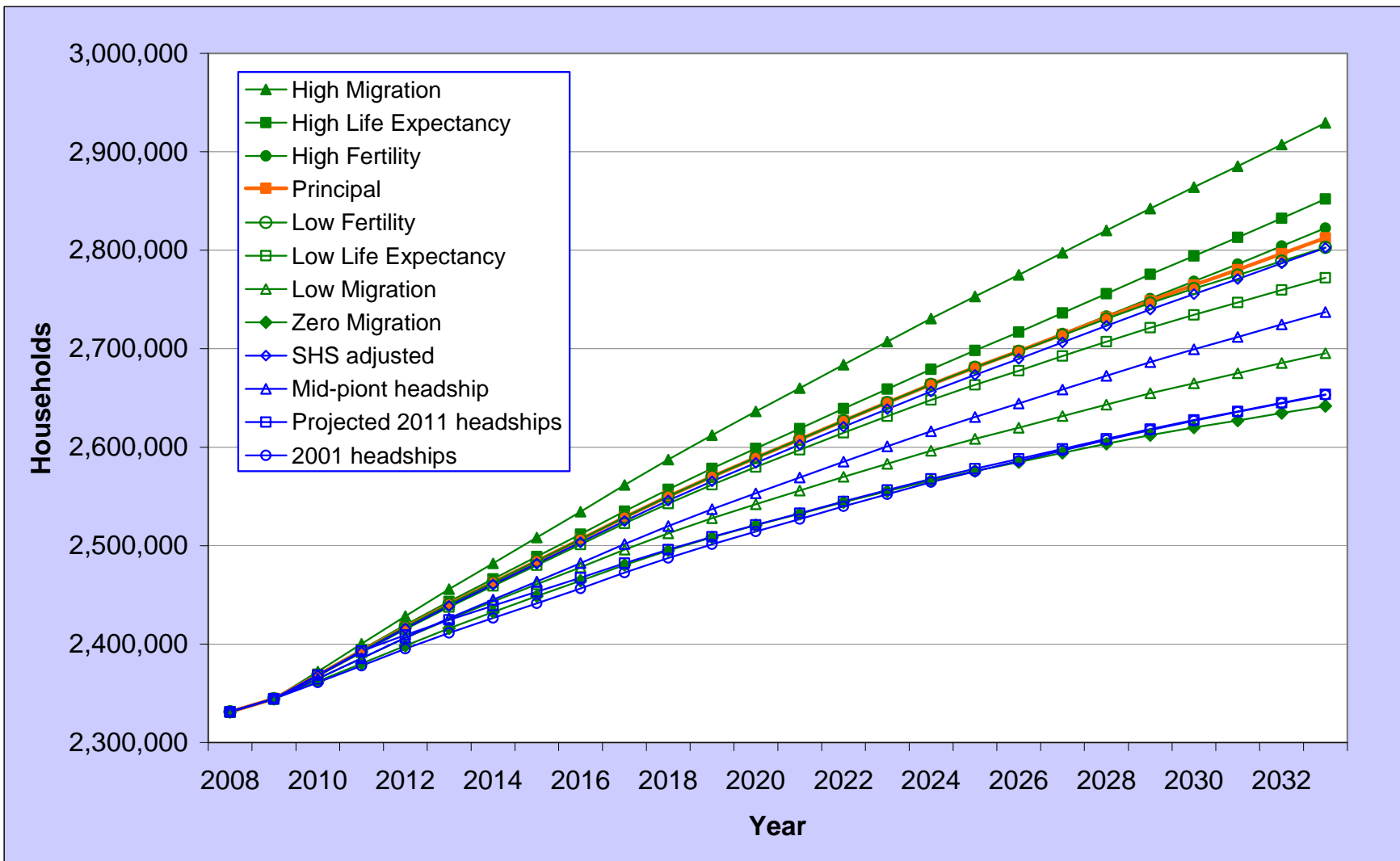




# Projected percentage of households of each type in 2033, Glasgow City

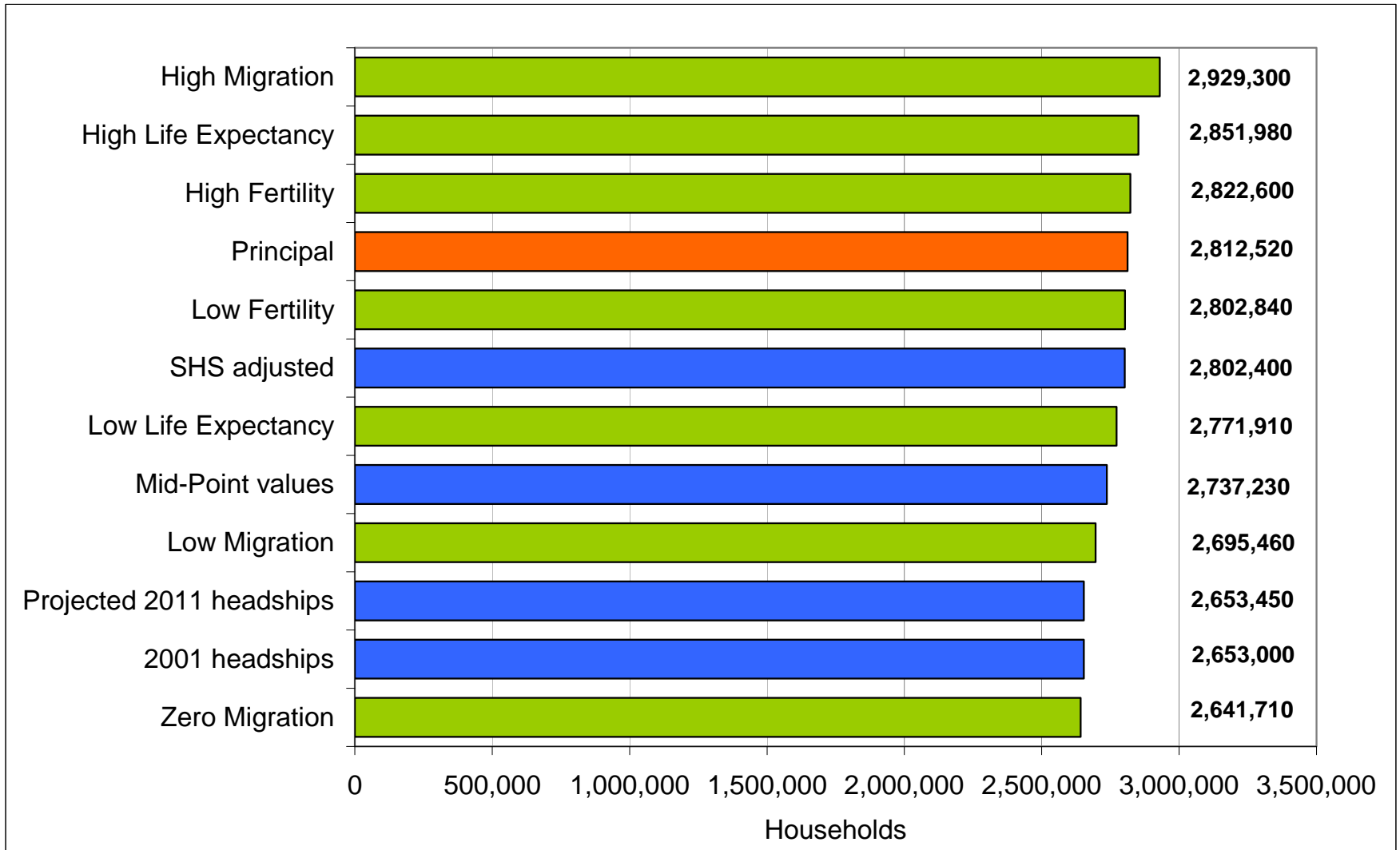


# Variant and Alternative Household Projections, Scotland





# Variant and Alternative Household Projections for 2033, Scotland



**HARG members are asked to consider the additional variant household projections along with other alternatives incorporating survey data and determine which should be prioritised.**