

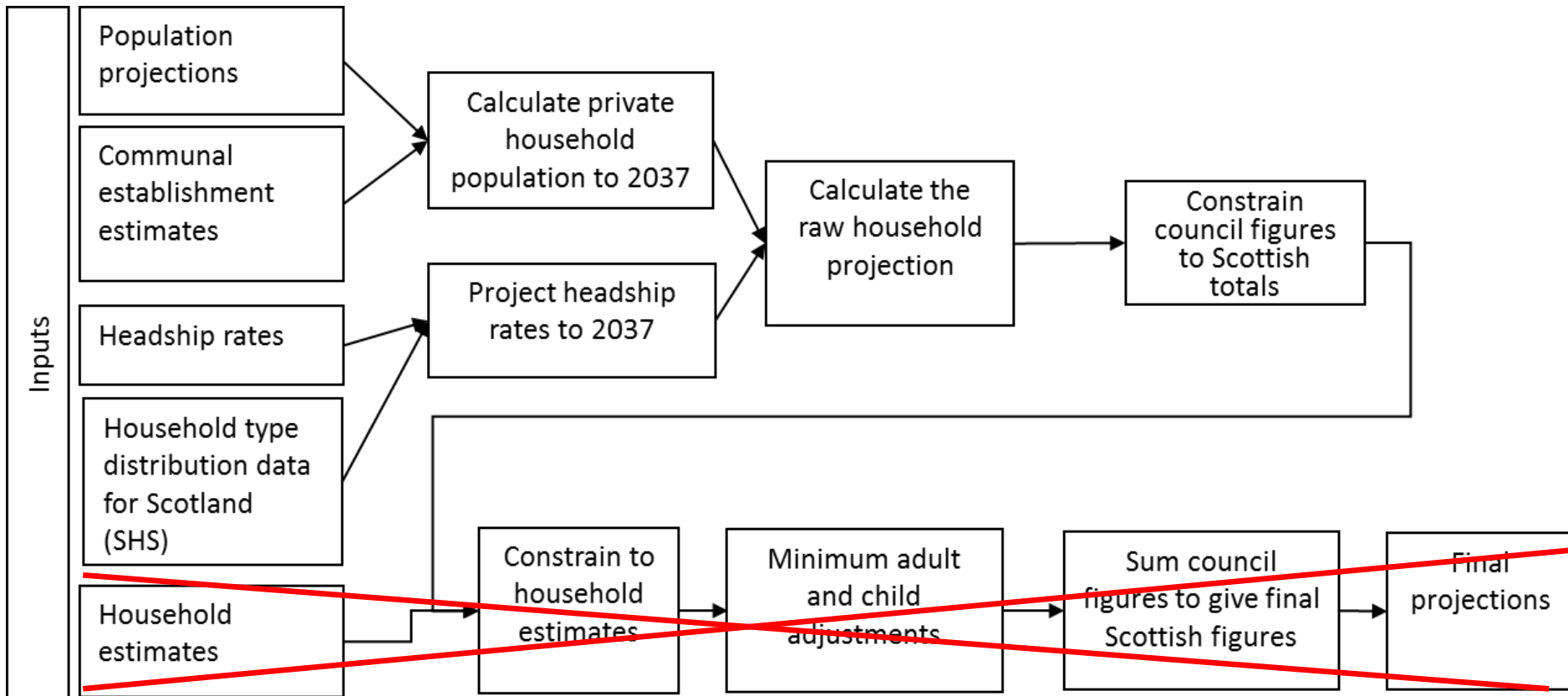
Sub-council area household projections

Esther Roughsedge

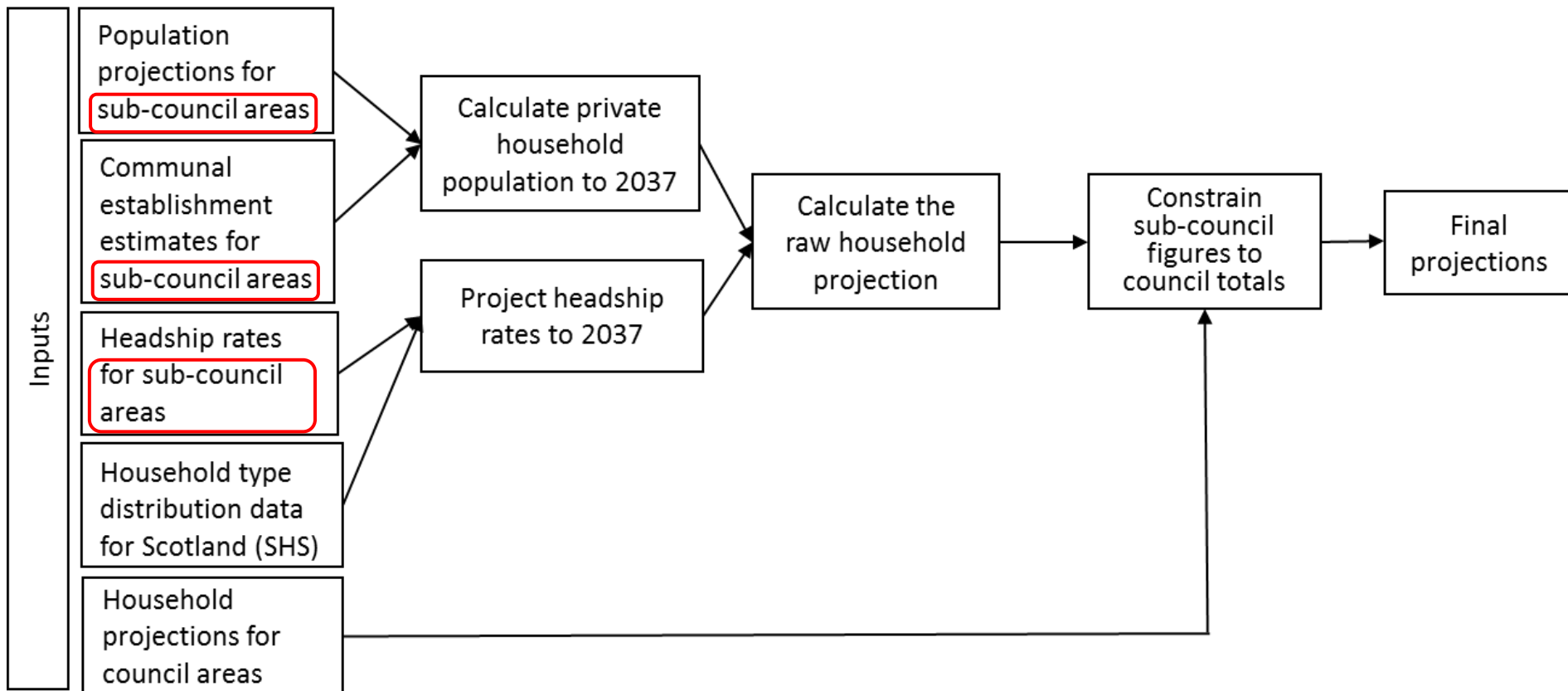
NRS Household estimates & projections
branch

23 March 2016

Main household projections method - for council areas



Household projections method for sub-council areas (this project)



Household types and age groups

Household types
1 person households:
1 adult: male
1 adult: female
2 person households:
2 adults
1 adult, 1 child
3+ person households:
1 adult, 2+ children
2+ adults, 1+ children
3+ adults

Age group
16-19
20-24
25-29
30-34
35-39
40-44
45-49
50-54
55-59
60-64
65-69
70-74
75-79
80-84
85-89
90+

2012-based principal household projections by household type and age of head of household, 2012 to 2037

Scotland

Area	Household type	Age group	2012	2013	2014	2015	2016	2017	2018	2019
Scotland	16-19	1 adult, 1 child	2,657	2,642	2,619	2,607	2,577	2,528	2,476	2,438
			12,259	12,359	12,441	12,398	12,216	12,052	11,952	11,847
			13,312	13,533	13,815	14,065	14,429	14,760	14,849	14,899
			12,891	13,271	13,459	13,659	13,830	14,013	14,336	14,704
			12,485	12,318	12,501	12,824	13,232	13,820	14,331	14,617
			14,544	14,392	14,153	13,969	13,711	13,404	13,317	13,585
			11,516	11,745	11,930	11,995	12,166	12,221	12,144	11,976
			5,638	5,924	6,199	6,489	6,693	6,879	7,023	7,131
			1,917	1,996	2,086	2,176	2,268	2,361	2,456	2,543
			810	794	790	792	802	821	838	859
			508	525	538	549	555	531	522	519
			336	337	341	344	352	380	396	406
			248	250	253	255	254	257	264	272
			186	188	191	196	201	206	214	222
			110	111	115	120	127	134	141	149
			85	88	93	99	105	111	118	126
	Total All Ages		89,501	90,474	91,525	92,535	93,518	94,480	95,377	96,291
Scotland	16-19	1 adult 2+ children	233	224	216	208	200	191	181	174
			3,814	3,813	3,807	3,763	3,678	3,600	3,543	3,485
			10,289	10,426	10,608	10,763	11,005	11,219	11,249	11,249
			14,486	14,758	14,809	14,872	14,902	14,946	15,136	15,369
			14,600	14,295	14,395	14,656	15,010	15,563	16,022	16,228
			13,092	12,964	12,752	12,588	12,358	12,084	12,008	12,252
			6,411	6,581	6,723	6,795	6,927	6,992	6,979	6,912
			1,751	1,853	1,951	2,055	2,131	2,202	2,259	2,305
			417	443	470	498	527	557	587	616
			163	164	167	171	177	185	193	202
			78	83	88	93	96	95	96	98
			39	40	41	42	44	48	50	52
			15	15	15	15	15	15	15	15
			9	9	9	9	9	9	10	10
			4	3	3	3	3	3	2	2
			38	39	42	45	48	51	54	59
	Total All Ages		65,437	65,710	66,095	66,576	67,131	67,759	68,385	69,026

Interpreting the results

- Projections for small groups are less reliable than those for larger groups.
- Some of the figures we have published are **very small**.
- Take care interpreting these figures!
- Small numbers are not reliable on their own, but can be aggregated to the household types / age groups you need.

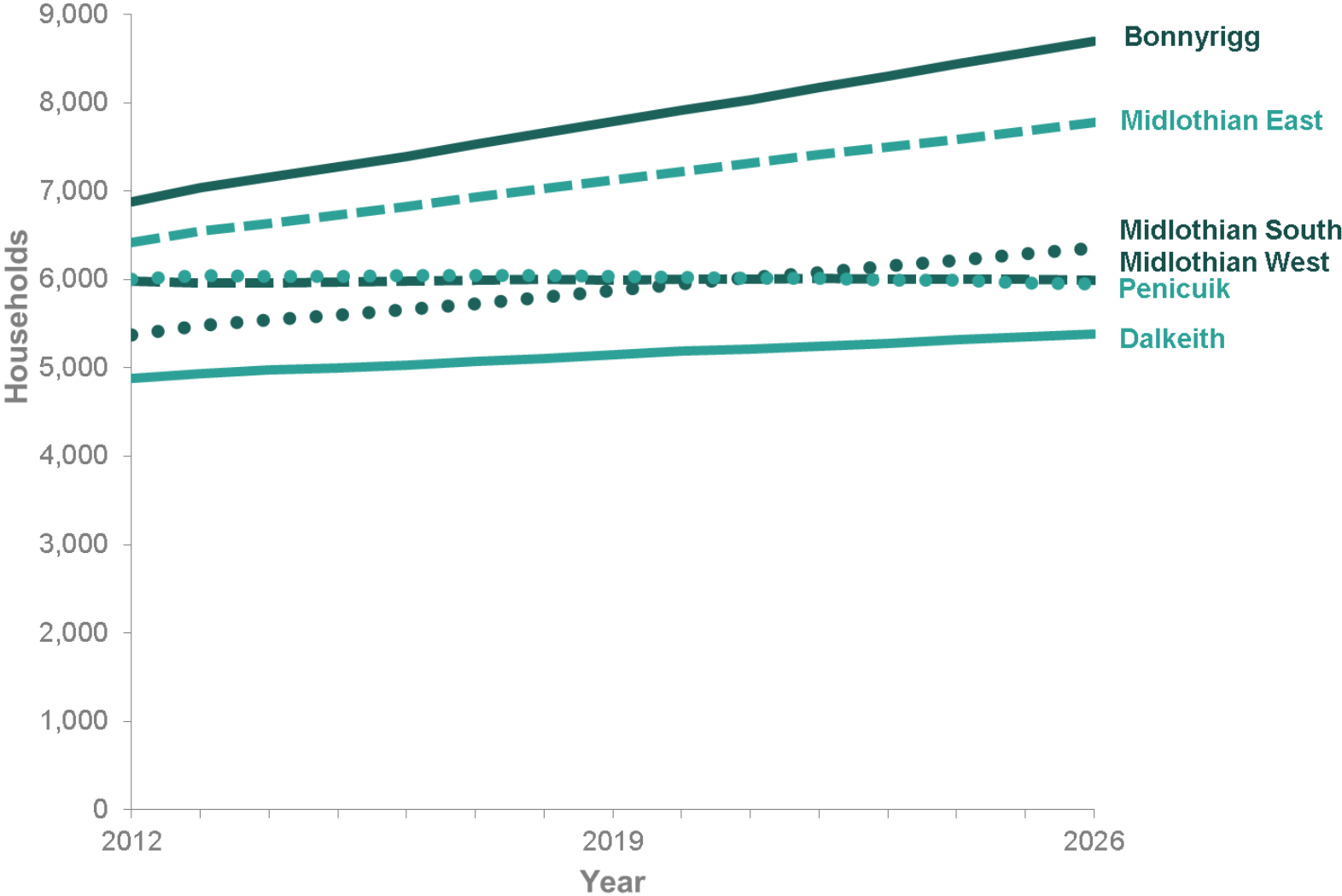
Results

Results summary

- Population projections:
 - Increases in 177 areas
 - Decreases in 124 areas
- Household projections:
 - Increases in 244 areas
 - Decreases in 57 areas
- **Overall household numbers are increasing faster than the population due to household sizes falling.**

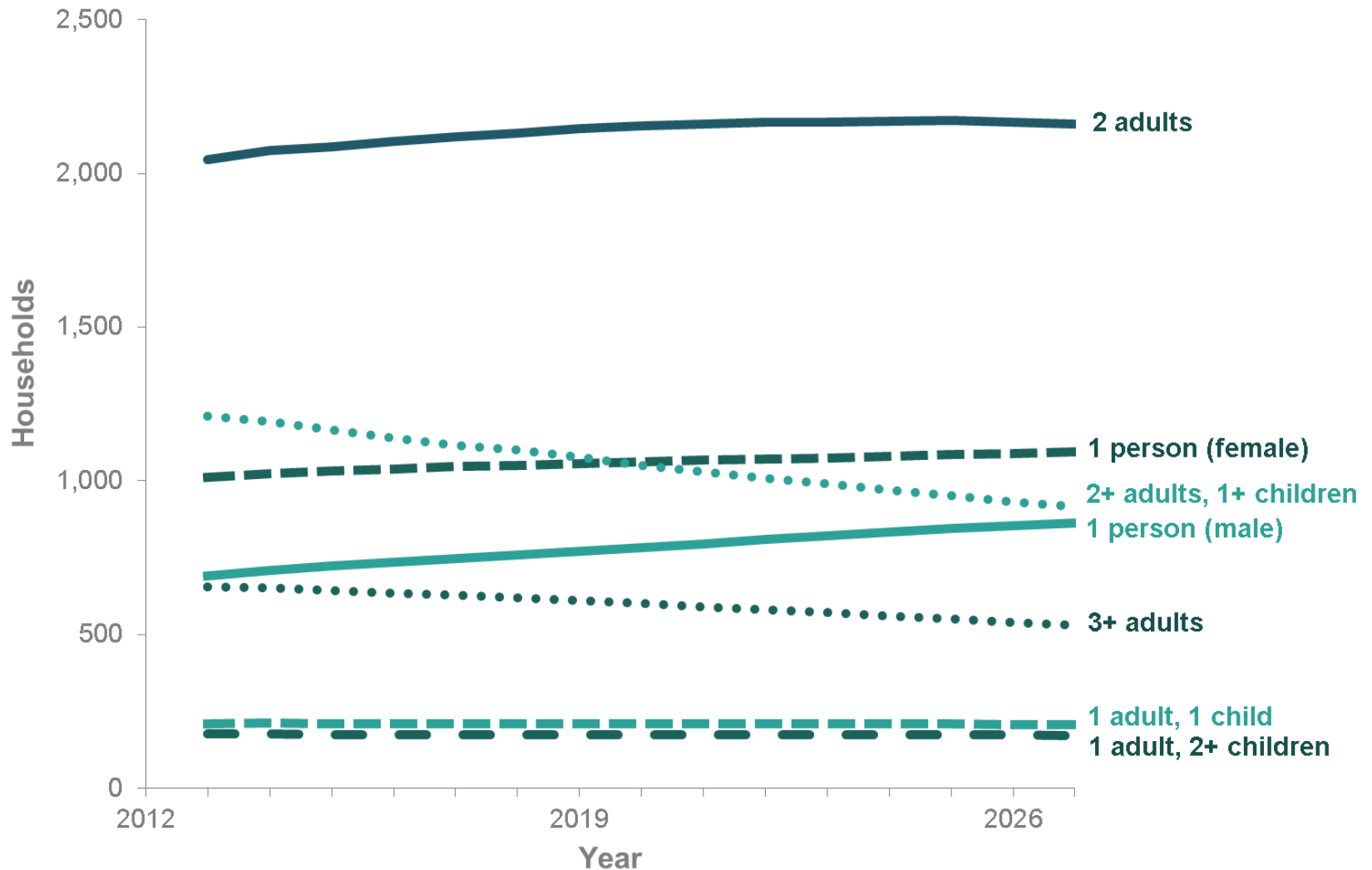
Example: Midlothian

Projected number of households in each sub-council area



Example: Penicuik, Midlothian

Projected number of households in each household type



Outputs

Available Outputs

– population and household projections

- Main report
- About this publication
- All figures and maps from the report
- Population summary tables
- Household summary tables
- Population detailed tables x 32
- Household detailed tables
- ‘Scroll charts’ – fertility, mortality and migration
- Sub-council area projections in Scotland using POPGROUP v4.0 software – user guidance
- Notes and caveats

Conclusion

- We hope you find this work useful!
- If you need help understanding or explaining the figures, **just ask**.
- **We welcome feedback** – now or once you have looked at the results, or used them.

Questions / discussion