

Figure 1: Projected number of households in Scotland's National Parks, 2010 to 2035

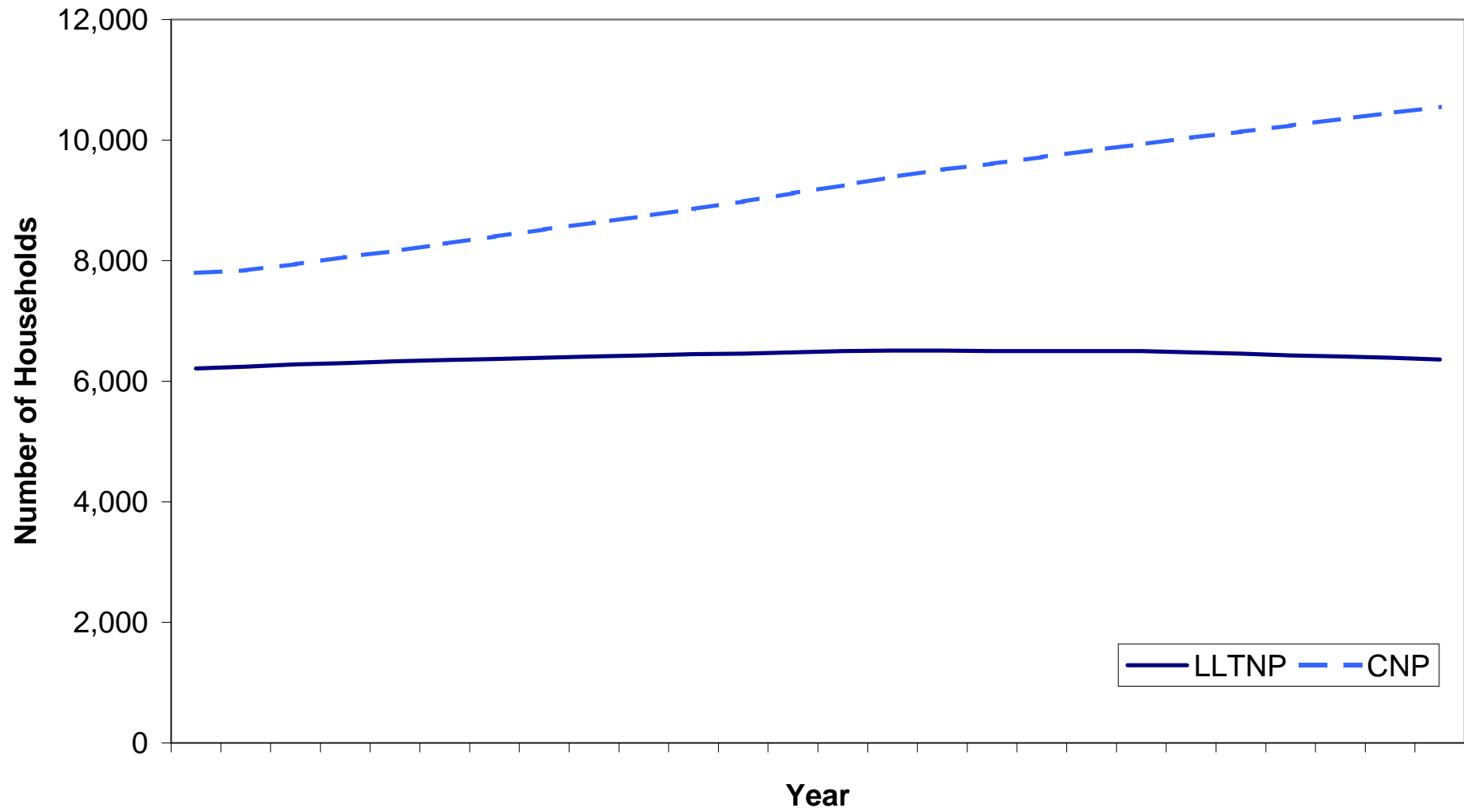


Figure 2: Projected number of households in Scotland's National Parks, by household type, 2010 and 2035

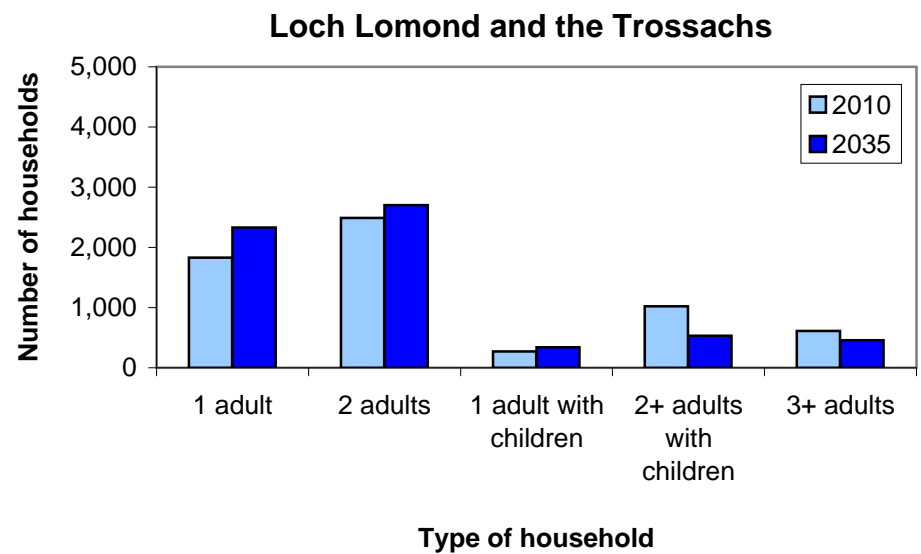
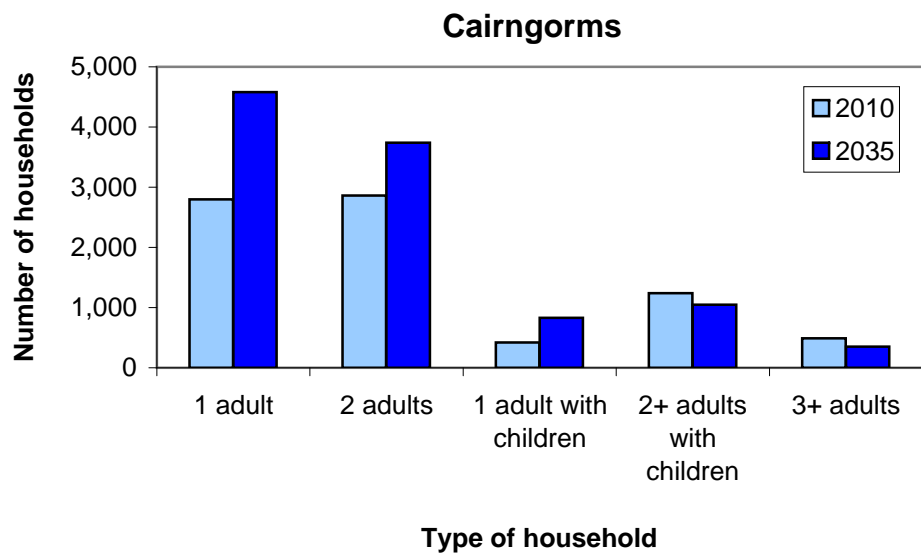


Figure 3: Projected number of households in Scotland's National Parks, by age of head of household, 2010 and 2035

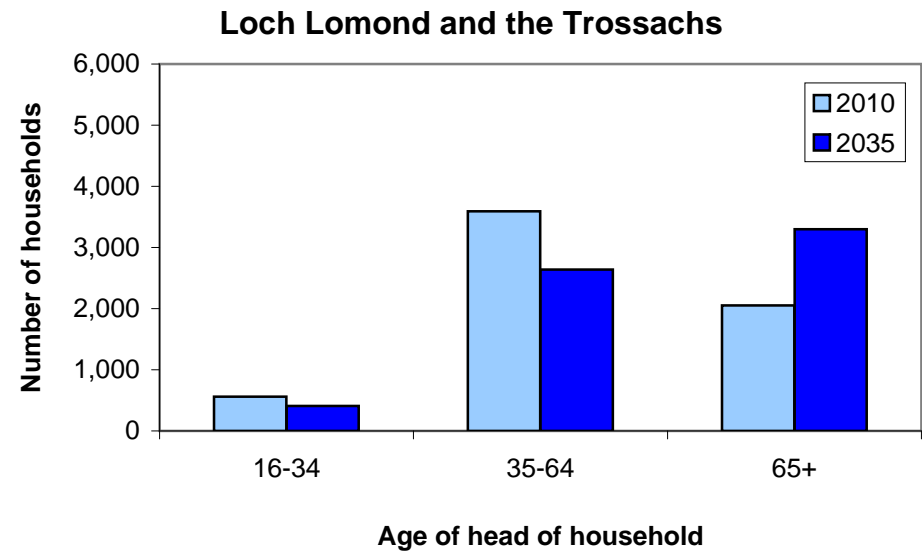
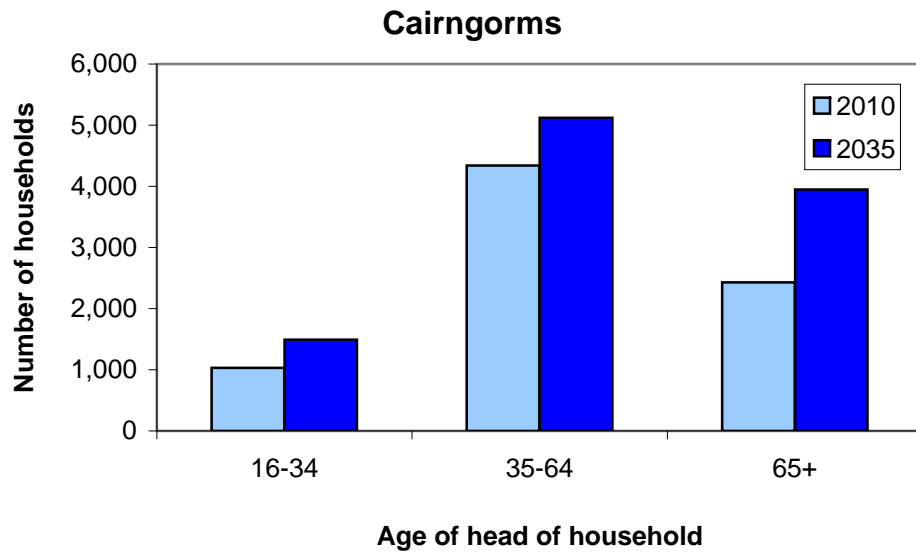


Figure 4: Projected number of households in SDP areas, 2010 to 2035

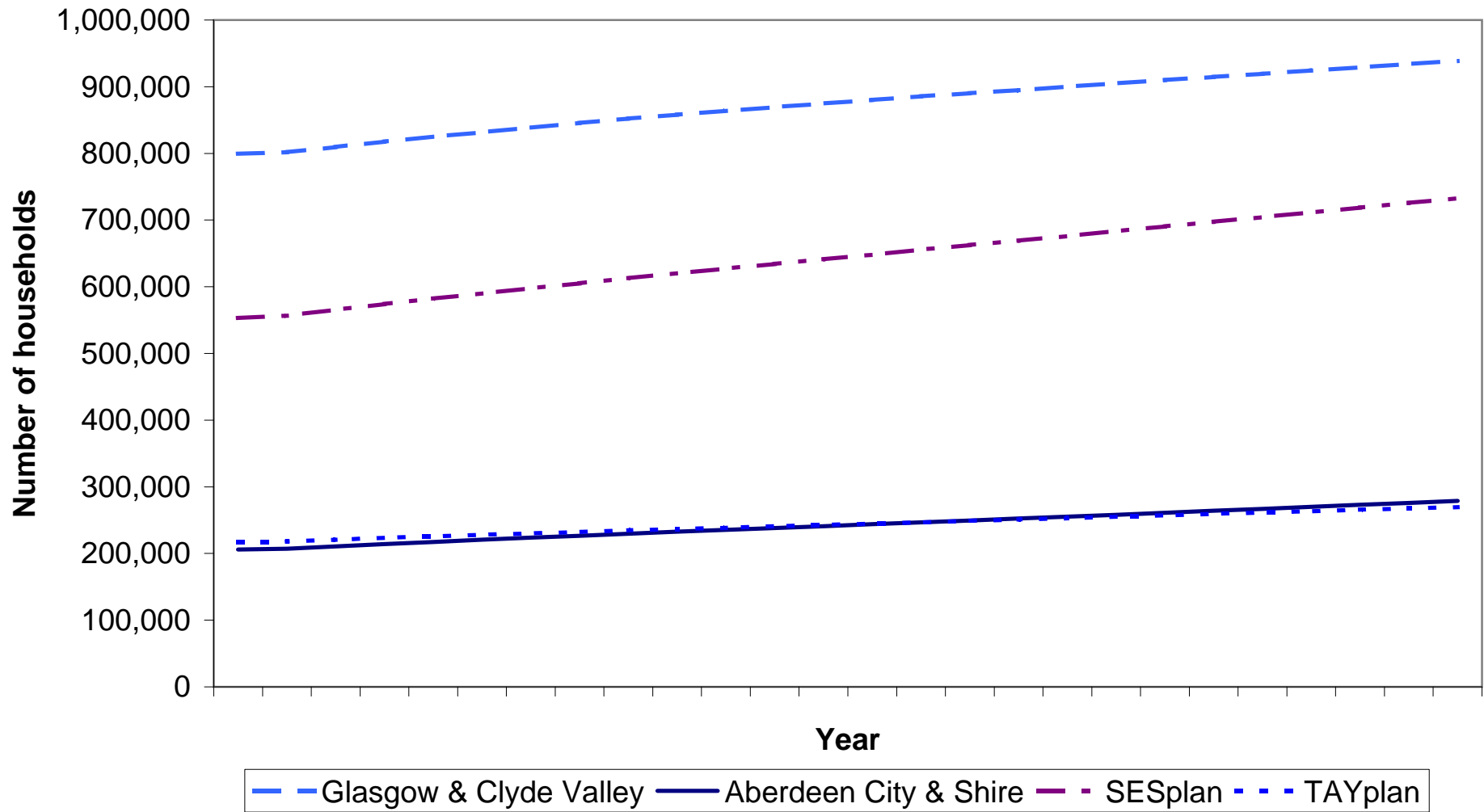


Figure 5: Projected number of households in Strategic Development Plan areas, by household type, 2010 and 2035

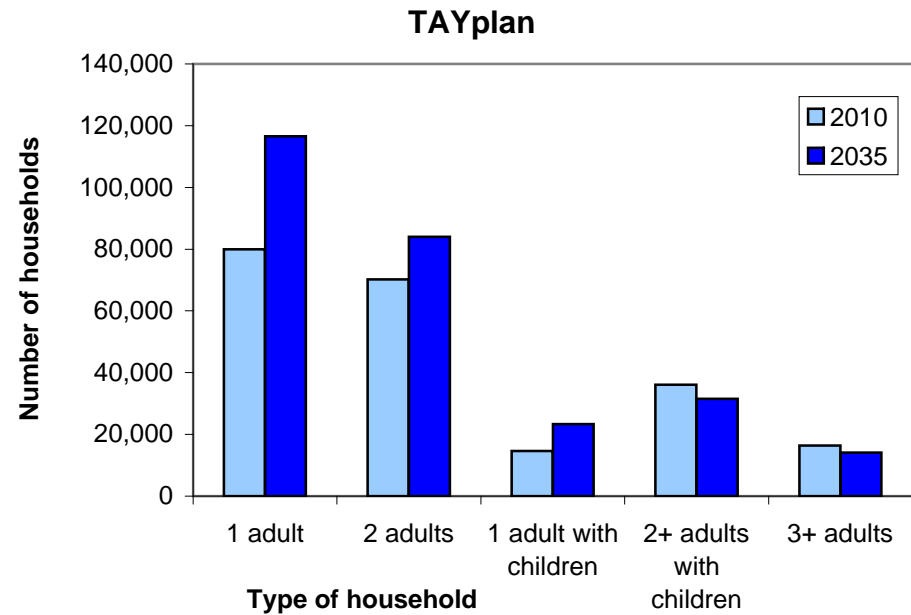
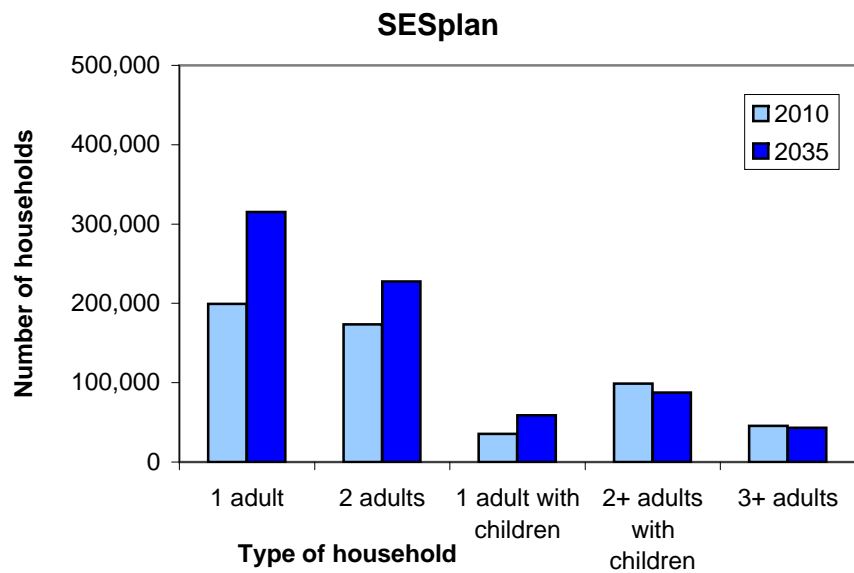
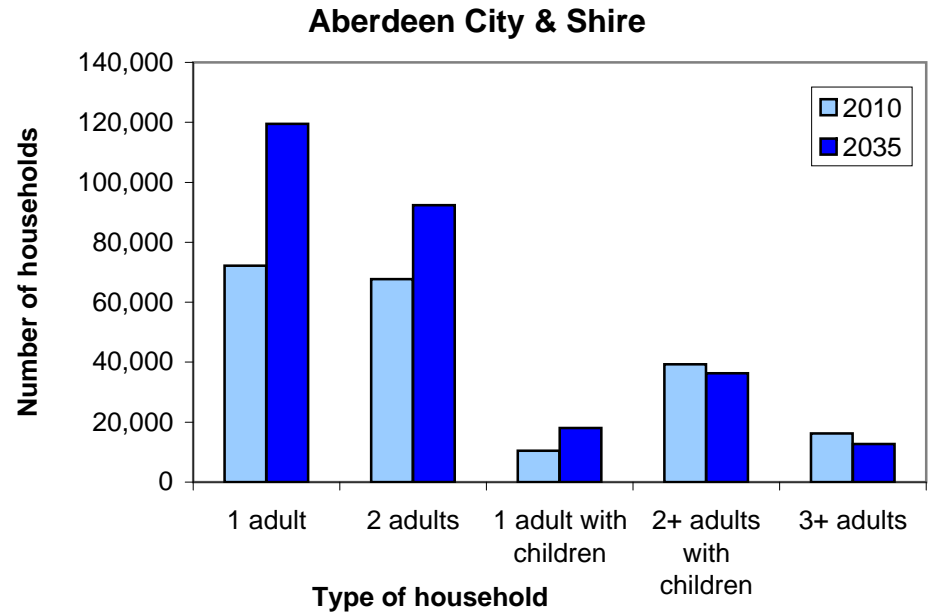
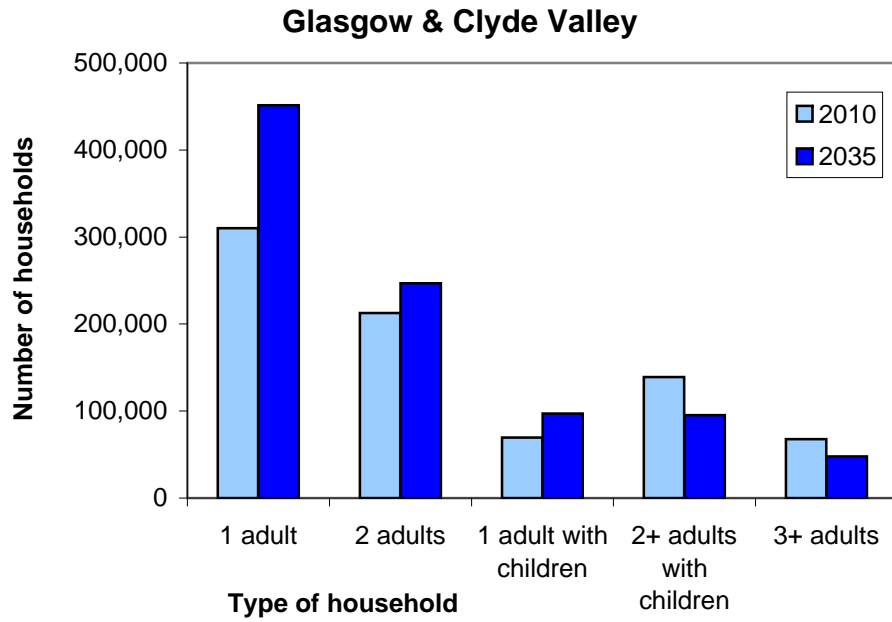


Figure 6: Projected number of households in Strategic Development Plan areas, by age of head of household, 2010 and 2035

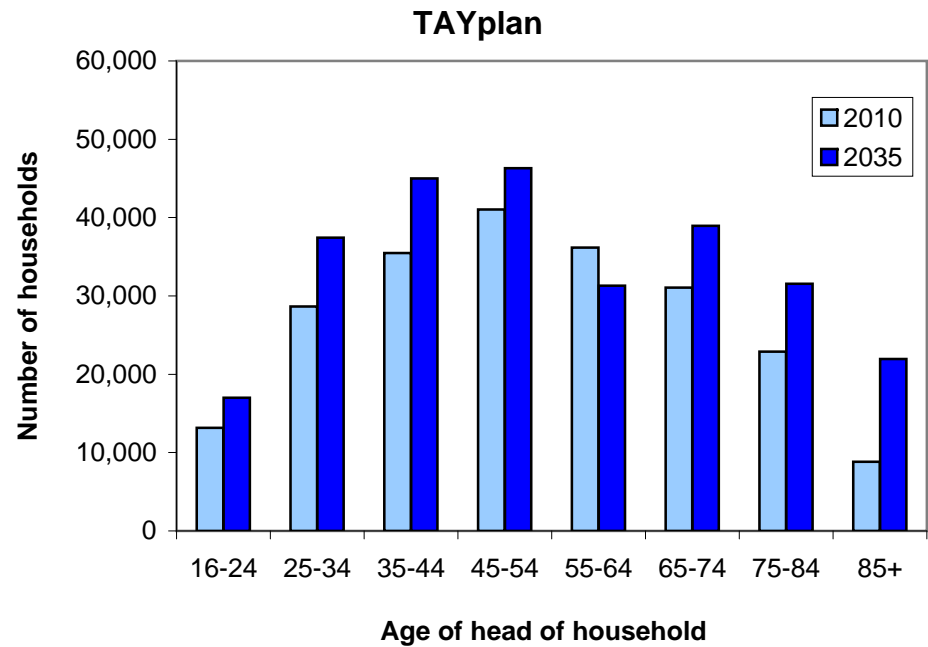
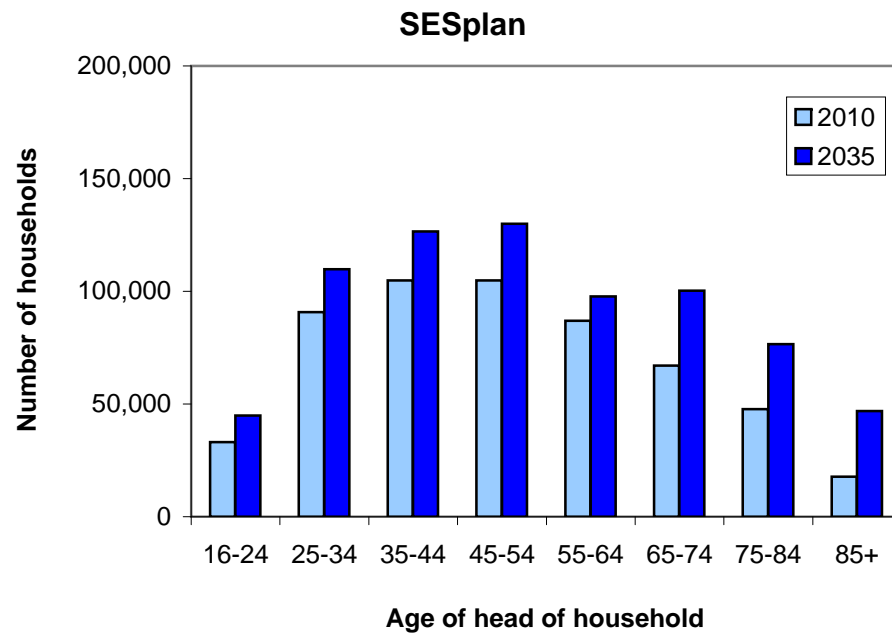
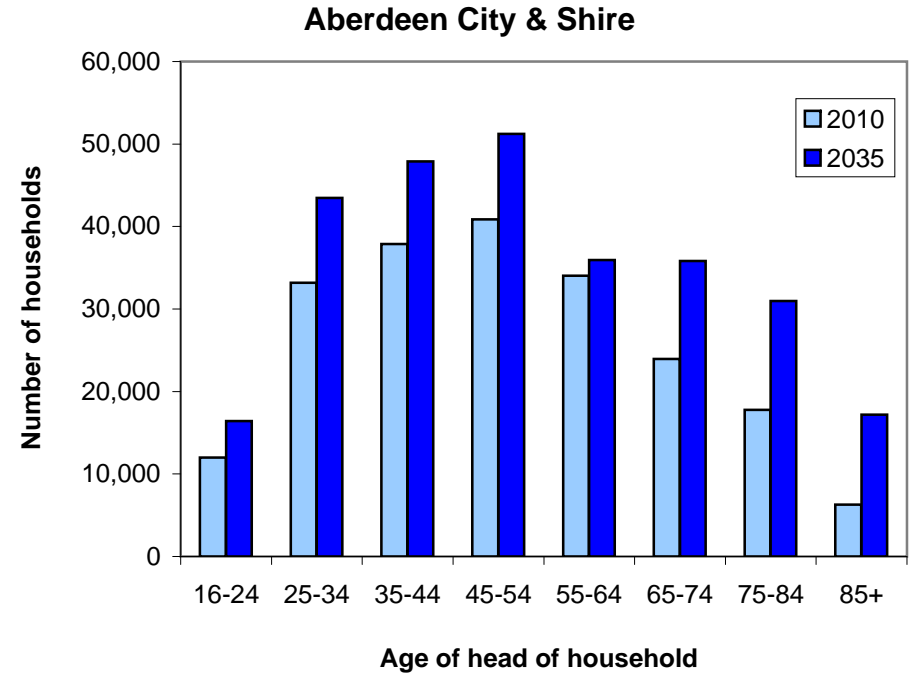
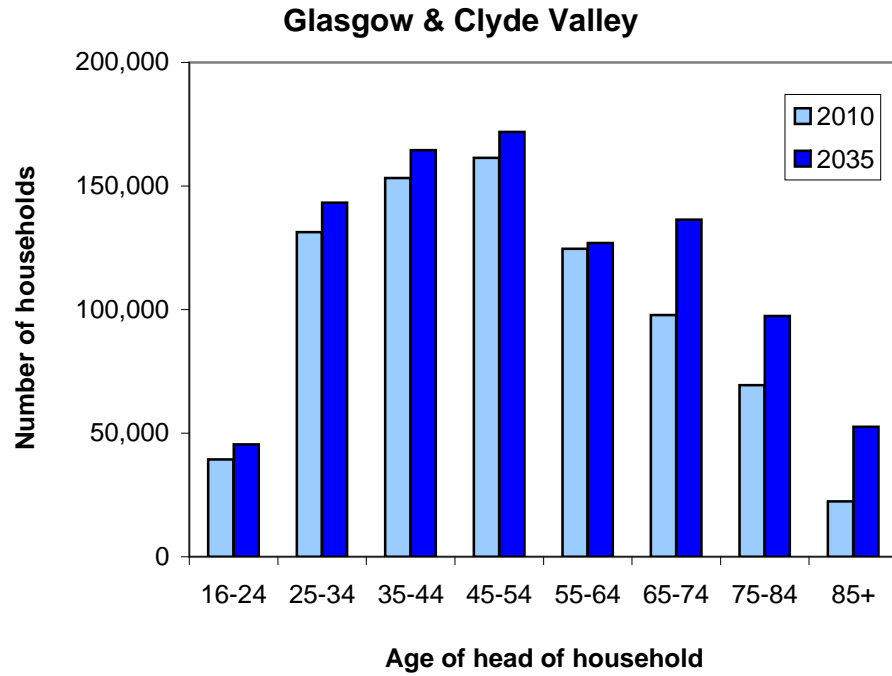


Figure 7a: Principal, low and high migration variants, 2010-based household projections for Scotland's National Parks

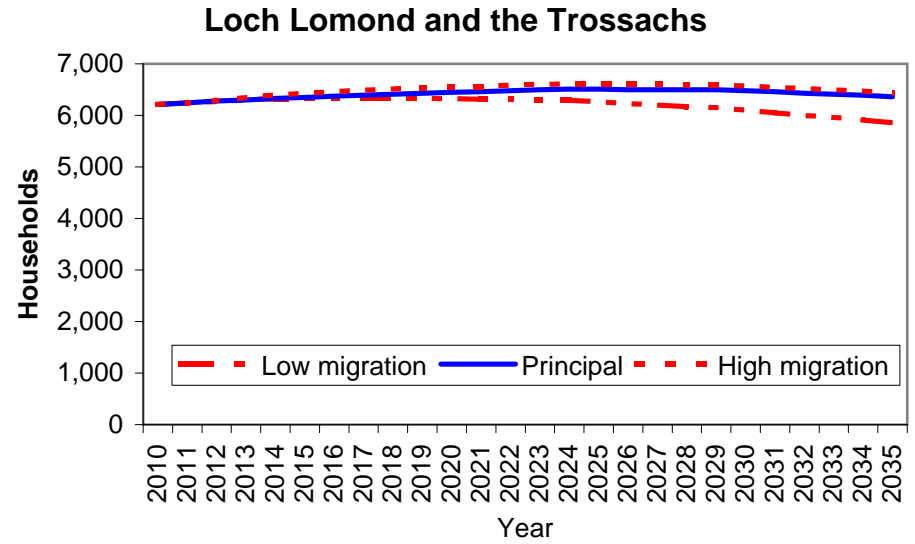
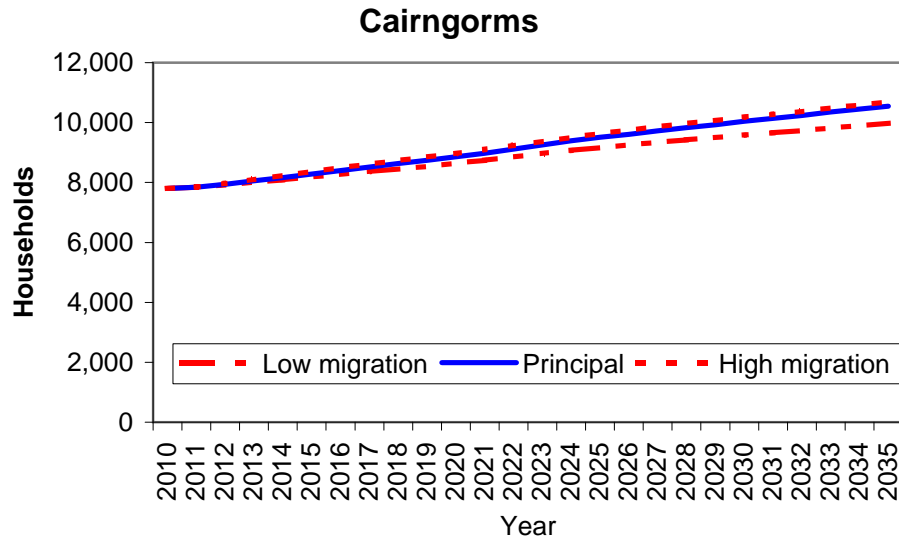
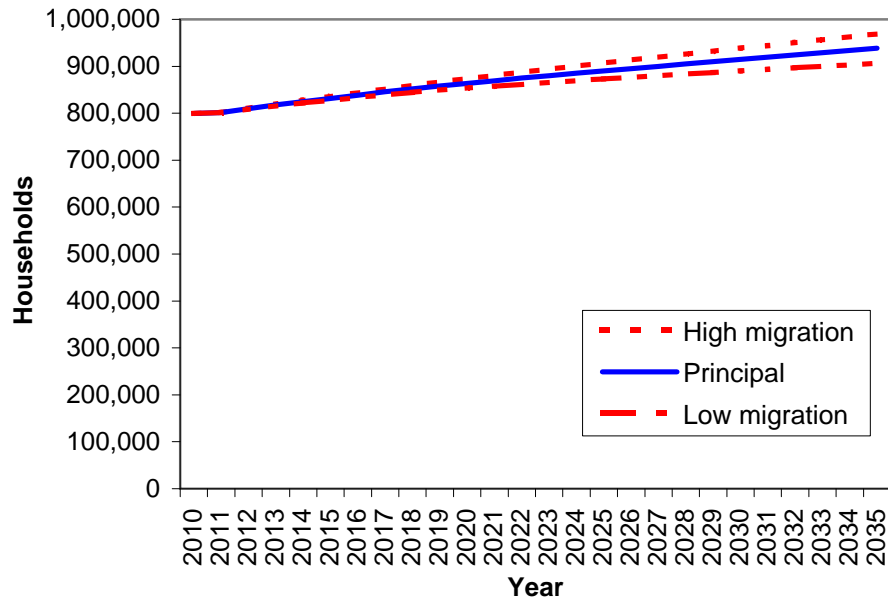
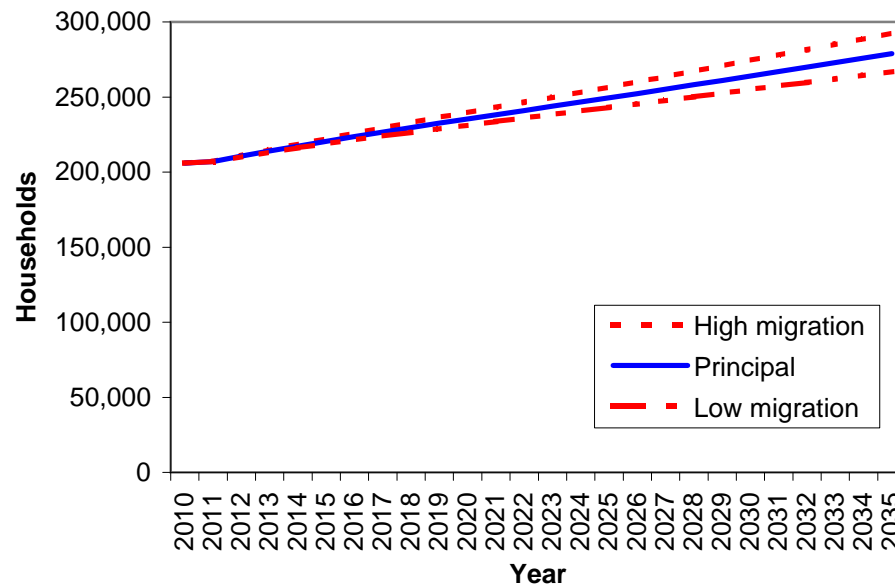


Figure 7b: Principal, low and high migration variants, 2010-based household projections for Strategic Development Plan areas

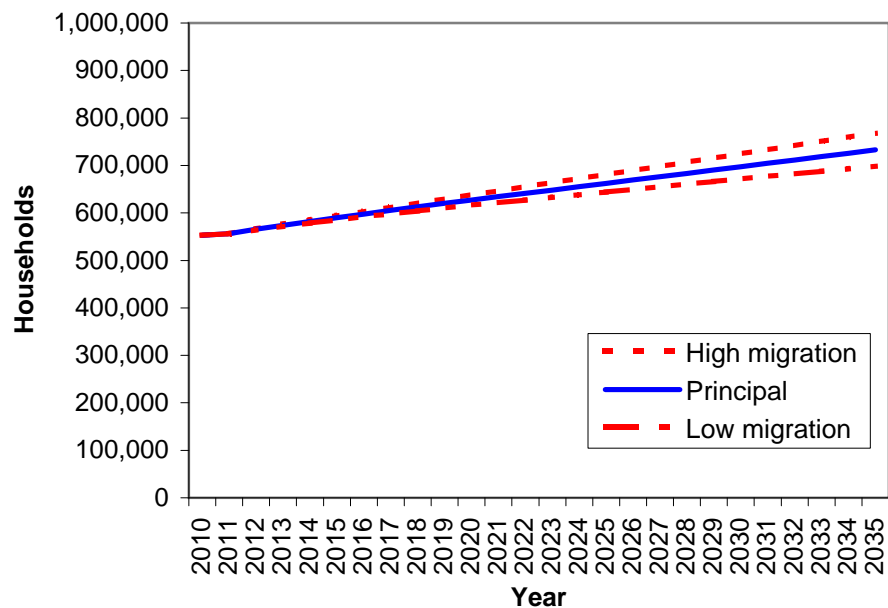
Glasgow & Clyde Valley



Aberdeen City & Shire



SESplan



TAYplan

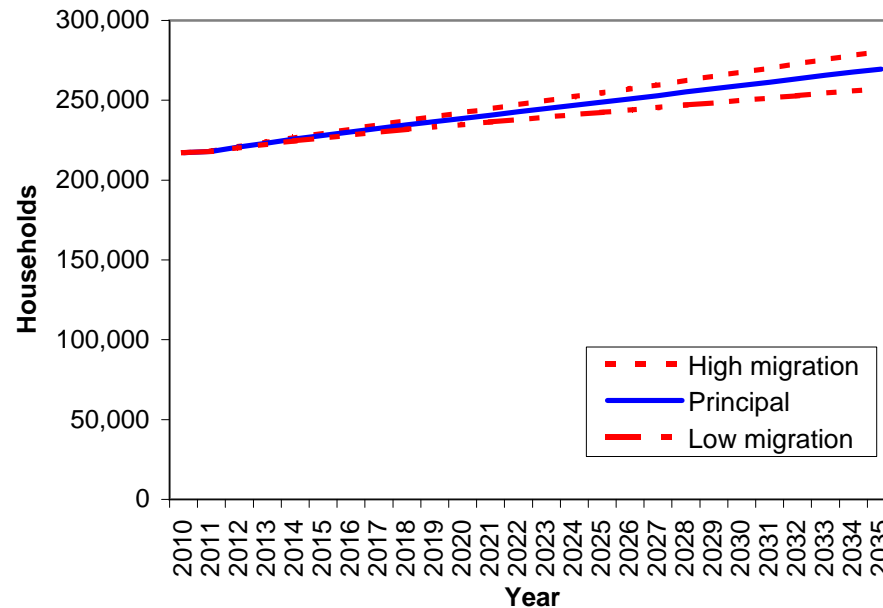


Figure 8a: Principal and alternative headship rate variants, 2010-based household projections for Scotland's National Parks

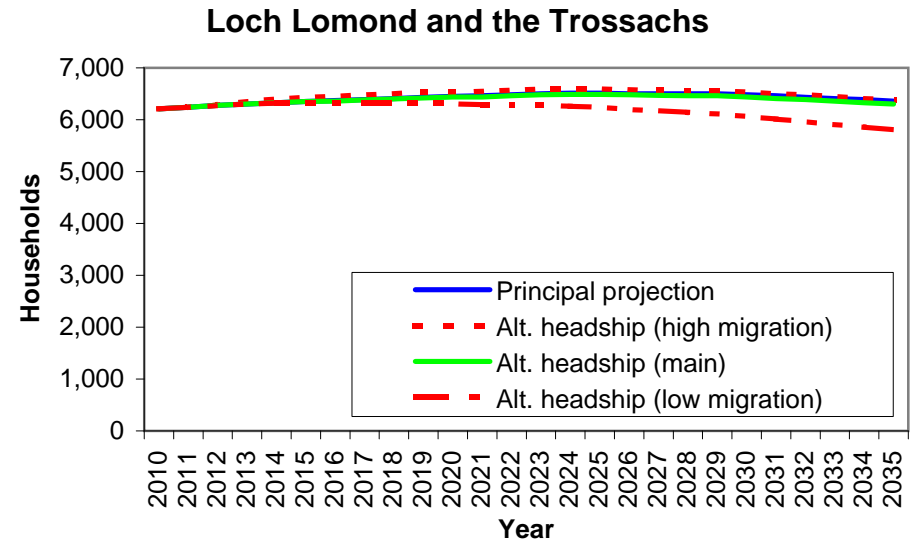
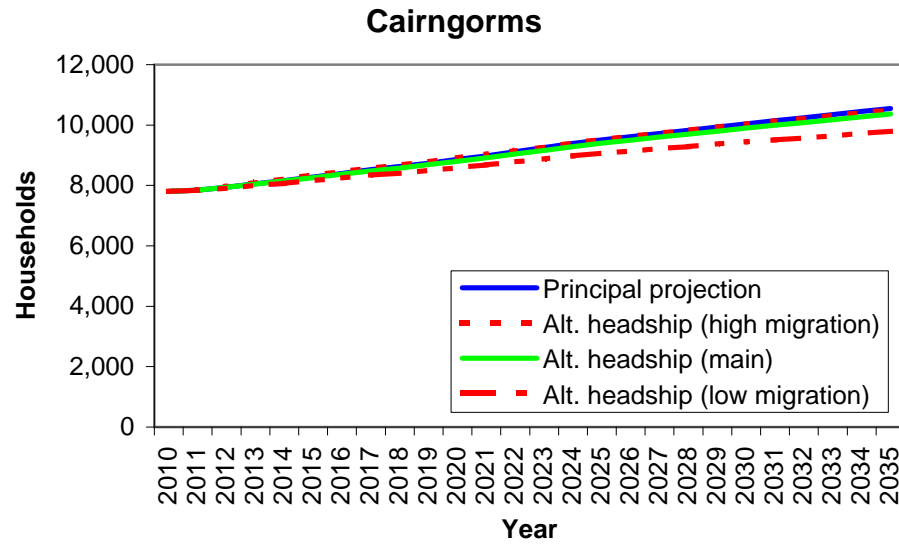


Figure 8b: Principal and alternative headship rate variants, 2010-based household projections for Strategic Development Plan areas

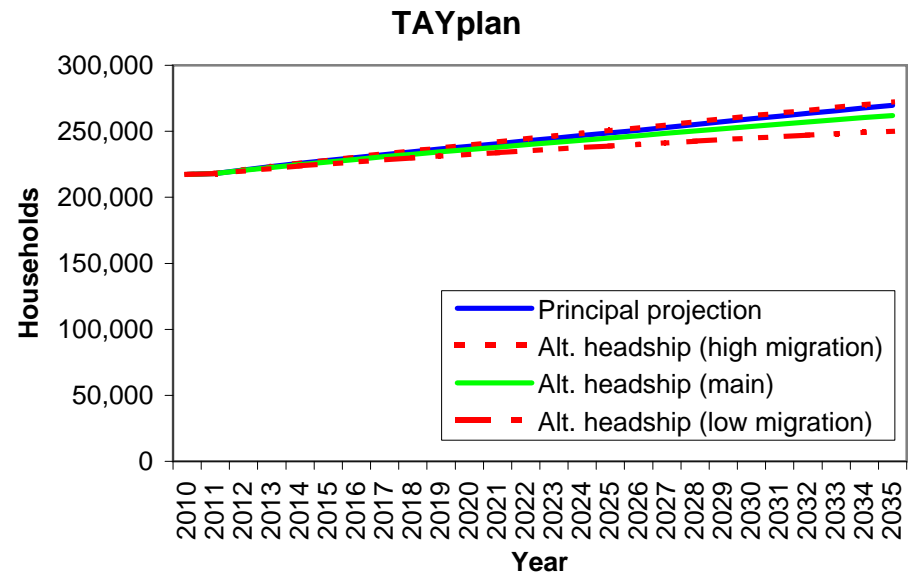
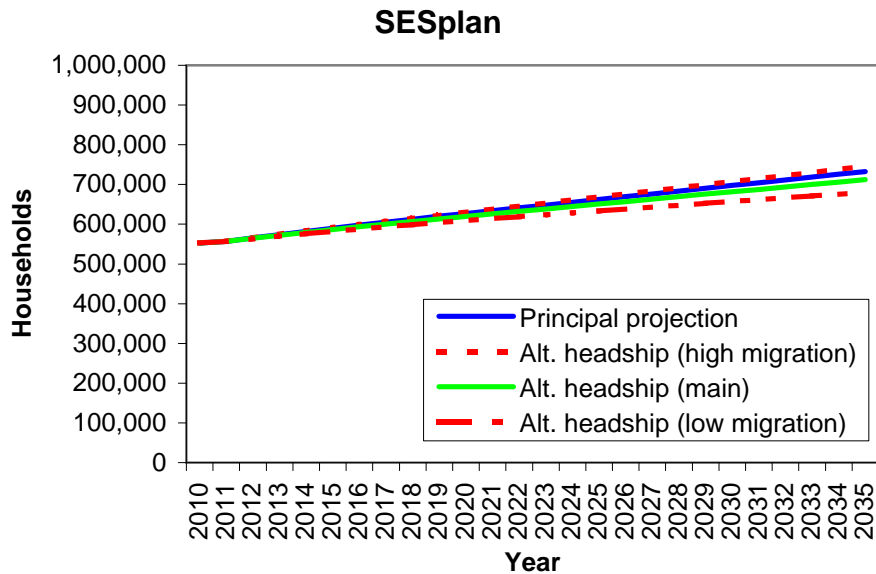
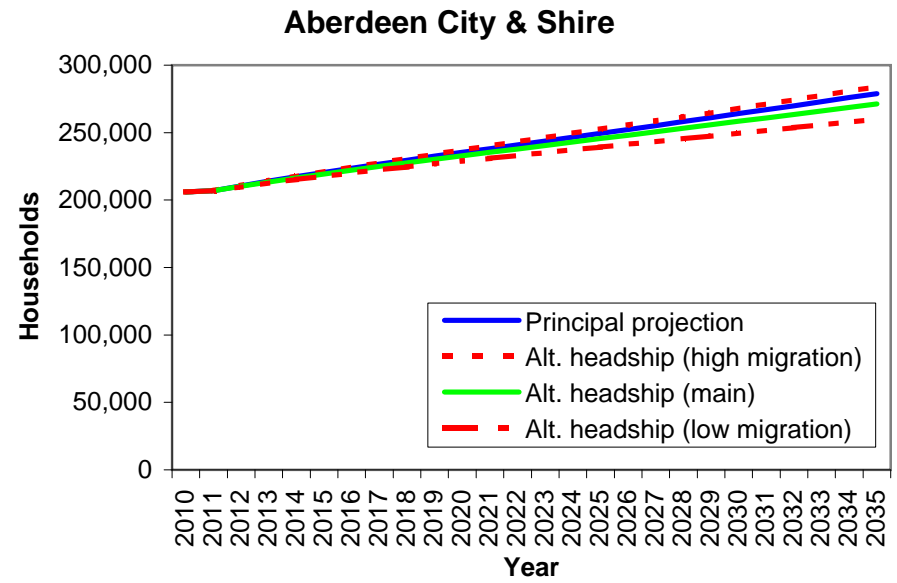
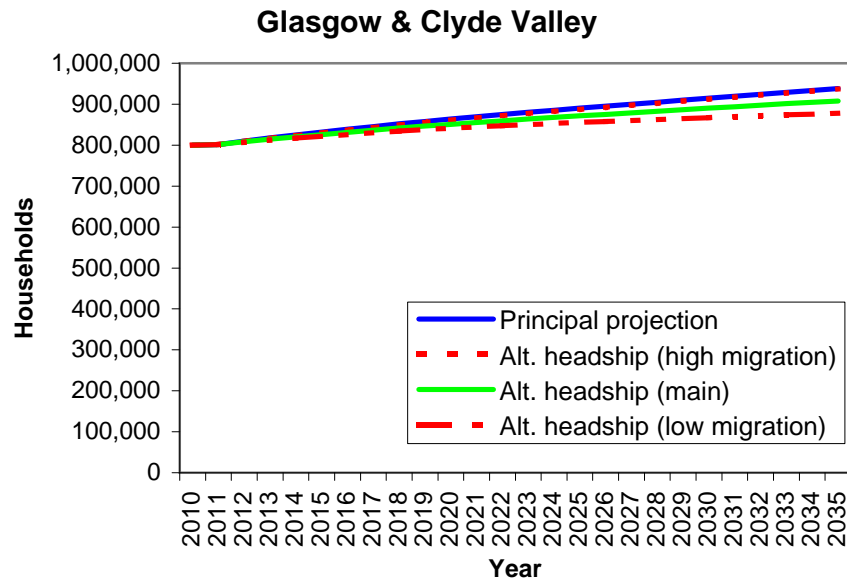


Figure 9: Annual increase in the number of households in Scotland, 2001 to 2011

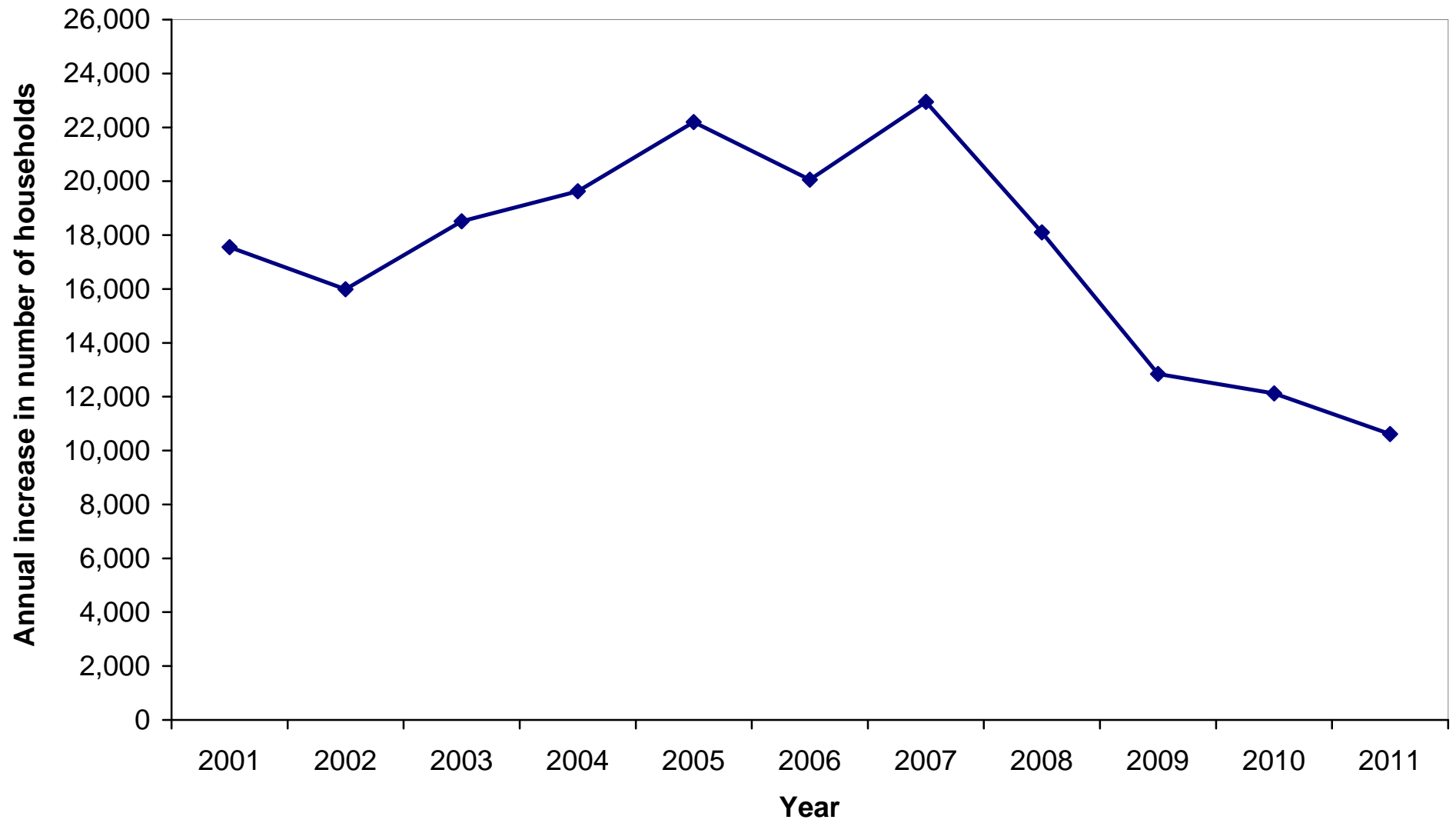


Figure 10a: Principal and constrained housing variants, 2010-based household projections for Scotland's National Parks

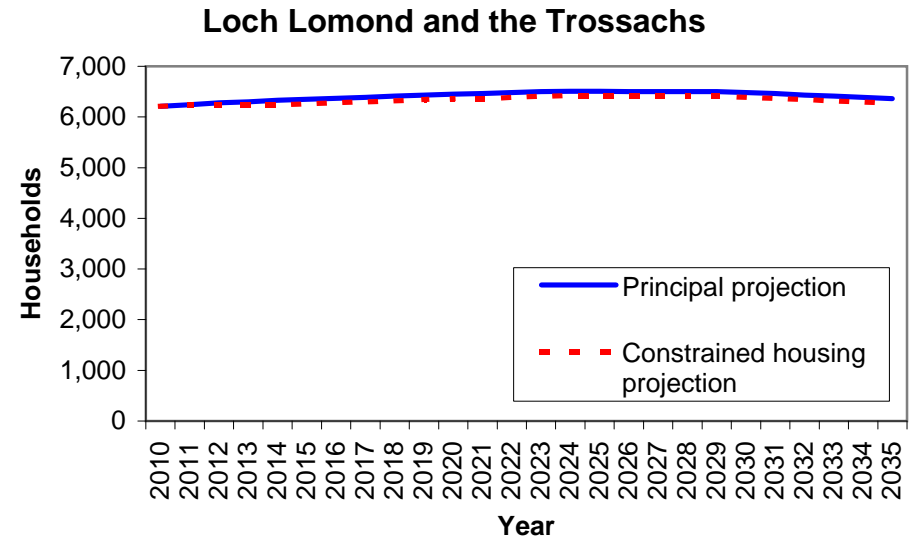
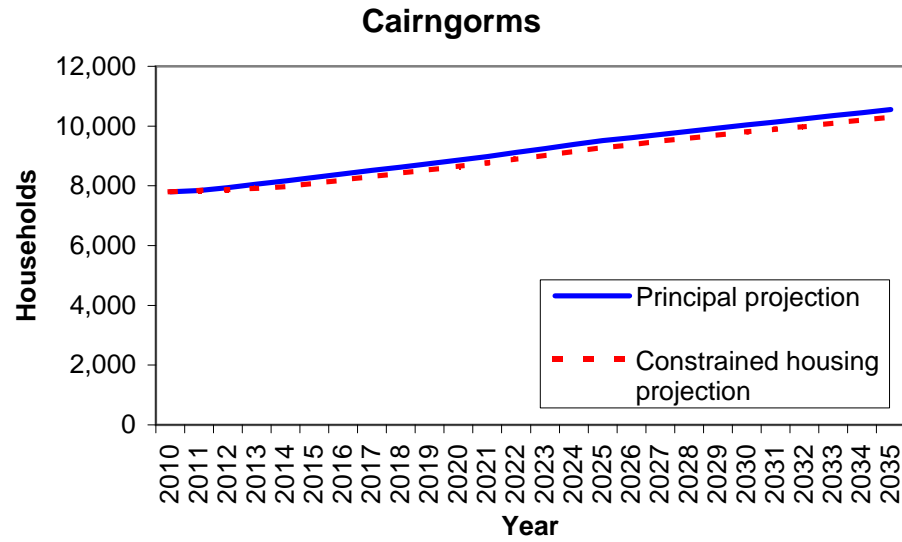


Figure 10b: Principal and constrained housing variants, 2010-based household projections for Strategic Development Plan areas

