



General Register Office
for
SCOTLAND
information about Scotland's people

***Life Expectancy for Administrative Areas
within Scotland, 2003-2005***

First published on 5 September 2006

Revised 4 September 2007

A National Statistics publication

National Statistics are produced to high professional standards set out in the National Statistics Code of Practice. They undergo regular quality assurance reviews to ensure that they meet customer needs. They are produced free from any political interference.

© Crown copyright 2007

Contents

1. Main Points	1
2. Introduction	2
3. Life Expectancy at Birth	2
4. Discussion of Results	3
4.1 The Scottish Picture	3
4.2 Life Expectancy at Birth 2003-2005	3
4.3 Accuracy of Results	4
4.4 Comparisons between 1993-1995 and 2003-2005	7
4.5 Life Expectancy Figures from 1981-1983 and Comparisons with 2003-2005	12
5. Notes and Definitions.....	17
6. Further information	21
6.1 National Life Expectancy at Birth	21
6.2 Life Expectancy for Scottish Administrative Areas	21
6.3 Other related data	22
6.4 Other data available from the National Records of Scotland	22
7. Notes on Statistical Publications.....	35

List of Tables

Table 1 Life expectancy at birth ¹ in Scotland 2003-05 by administrative area, and comparisons with 1993-95 (Males)	23
Table 2 Life expectancy at birth ¹ in Scotland 2003-05 by administrative area, and comparisons with 1993-95 (Females)	24
Table 3 Abridged life table, by sex, age and Council area, Scotland 2003-05	25
Table 4 Abridged life table, by sex, age and NHS Board area, Scotland 2003-05	28
Table 5 Life expectancy at birth ¹ in Scotland 2003-05 by administrative area, with 95% upper and lower confidence intervals (Males and Females)	30
Table 6 Life expectancy at birth ¹ in Scotland 1981-83 to 2003-05 by administrative area (Males).....	31
Table 7 Life expectancy at birth ¹ in Scotland 1981-83 to 2003-05 by administrative area (Females).....	32

Table 8 Life expectancy at birth ¹ in Scotland 2003-05 by administrative area, and comparisons with 1981-83 (Males)	33
Table 9 Life expectancy at birth ¹ in Scotland 2003-05 by administrative area, and comparisons with 1981-83 (Females)	34

List of Figures

Figure 1 Estimated population of Scotland, 1981-2005	3
Figure 2 Life expectancy at birth 95% confidence intervals for Council areas, 2003-2005 ..	5
Figure 3 Life expectancy at birth 95% confidence intervals for NHS Board areas, 2003-2005.....	6
Figure 4a Percentage change in life expectancy at birth between 1993-95 and 2003-05, Council area, Males [Map]	8
Figure 4b Percentage change in life expectancy at birth between 1993-95 and 2003-05, Council area, Females [Map]	9
Figure 4c Percentage change in life expectancy at birth between 1993-95 and 2003-05, Council area, Males and Females	10
Figure 5 Percentage change in life expectancy at birth between 1993-95 and 2003-05, NHS Board area, Males and Females	11
Figure 6a Percentage change in life expectancy at birth between 1981-83 and 2003-05, Council area, Males [Map]	13
Figure 6c Percentage change in life expectancy at birth between 1981-83 and 2003-05, Council area, Males and Females	15
Figure 7 Percentage change in life expectancy at birth between 1981-83 and 2003-05, NHS Board area, Males and Females	16

1. Main Points

The key points in this report for 2003-2005 are:

- Life expectancy at birth for Scotland was 74.2 years for males and 79.2 years for females. This varied considerably amongst areas in Scotland;
- The Council area with the highest male life expectancy was East Dunbartonshire (77.7 years), 7.8 years more than Glasgow City, the lowest at 69.9 years;
- Orkney Islands had the highest life expectancy for females (81.4 years), 4.7 years more than Glasgow City (lowest at 76.7 years);
- The NHS Board with the lowest figure for both males and females was the Greater Glasgow area (71.9 and 77.8 years respectively). The highest figures were for Orkney: males (76.3 years) and females (81.4 years).

Compared with 10 years ago in 1993-1995:

- Life expectancy at birth for Scotland has improved from 71.9 years to 74.2 years for males and 77.5 years to 79.2 years for females;
- The gap between males and females is closing, dropping from 5.6 years to 5.0 years over the period;
- Although some areas had only very small increases in life expectancy over the 10 year period, there were no areas (Council and NHS Board area) that experienced a decrease;
- The gap between highest and lowest Council areas for male and female life expectancy at birth is increasing. For males, this has increased from 7.0 years in 1993-1995 to 7.8 years in 2003-2005 and for females from 4.3 years to 4.7 years over the same period;
- The biggest rise in life expectancy for males was in the Shetland Isles (5.9%) and for females was in Argyll & Bute (3.5%);
- The smallest rise was in West Dunbartonshire (0.1%) for males and East Ayrshire (0.9%) for females.

2. Introduction

2.1 This paper summarises the Registrar General for Scotland's life expectancy figures for the period 2003-2005 for administrative areas within Scotland and compares these with results for 1993-1995. It also details a historic time-series back to the period 1981-1983 to take account of the population estimates for the 1980's which were revised following the 2001 Census and published on 30 September 2002.

2.2 Figures for 1991-93 to 2001-03 were provided by the Office for National Statistics (ONS) and the results published in this report use their methodology (see **Section 6.2** for more details). Life expectancy data is now produced by the General Register Office for Scotland to allow earlier publication of results.

2.3 The results for 2003-2005, given in **Table 1** and **Table 2**, have been ranked for ease of presentation. For Council areas, this means that "1" is the area with the highest life expectancy and "32" the lowest. Similarly, NHS Boards are ranked 1 to 19 and include information for the 15 old NHS Board areas as well as the new Board areas created following the dissolution of NHS Argyll & Clyde on 31st March 2006. NHS Argyll & Clyde was split between Greater Glasgow and Highland resulting in two new NHS Board areas named Greater Glasgow & Clyde and Highland. This paper reports results for the old and new areas as well as the two parts of NHS Argyll & Clyde. See **Section 5** for more information about the dissolution of Argyll & Clyde NHS Board and **Section 4.3** about the reliability of the results.

2.4 The figures quoted in this publication are all period life expectancies. Period life expectancies are calculated using age specific mortality rates for a given period with no allowance for any later actual or projected future changes in mortality after that period.

3. Life Expectancy at Birth

3.1 The figures for 2003-2005 are a three year average. They are produced by aggregating deaths and population data for the three year period. Three years are needed to provide large enough numbers to ensure that the figures published in this report are sufficiently robust.

3.2 Period life expectancy at birth for a given time period and area is an estimate of the average number of years a new born baby would survive if he/she experienced the particular area's age specific mortality rate for that time period throughout his/her life. The figure reflects mortality among those living in the area in each period, rather than mortality among those born in each area. It is not the number of years a baby born in the area in the period is expected to live, both because death rates are likely to change in the future and because many of the new borns may live elsewhere for at least some part of their lives.

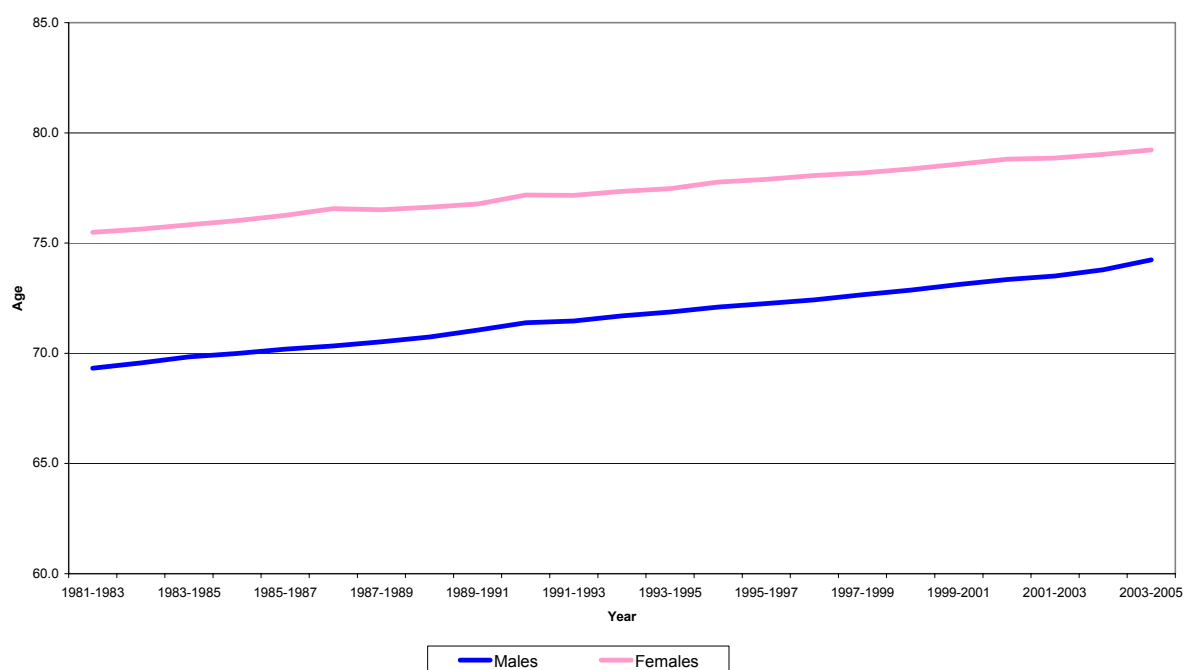
3.3 Life expectancy at birth is also not a guide to the remaining expectancy of life at any given age. It reflects the fact that survival from a particular age depends only on mortality rates beyond that age, whereas survival from birth is based on mortality rates at every age. See **Table 3** and **Table 4** for more details. Life expectancy at birth provides a useful summary measure of mortality rates actually experienced over a given period and, for past years, provides an objective means of comparison of the trends in mortality over time, between areas of a country and with other countries. More information on the methodology used is given in **Section 6.2**.

4. Discussion of Results

4.1 The Scottish Picture

4.1.1 **Figure 1** shows that the expectation of life at birth in Scotland has improved over the last 20 years or so. It has increased from 69.3 years for males and 75.5 years for females born in the period 1981-83 to 74.2 years and 79.2 years respectively for those born in 2003-05, an increase of 4.9 years and 3.7 years respectively.

Figure 1 Estimated population of Scotland, 1981-2005



4.1.2 **Figure 1** also shows that the gap between males and females is closing, dropping from 6.3 years in 1981-83 to 5.0 years in 2003-05.

4.1.3 Alternative, but very similar, results for Scotland are also produced by ONS. For more details see **Section 6.1**.

4.1.4 While this report concentrates on improvements in life expectancy, mortality rates in Scotland have generally fallen more slowly than in the rest of the UK and elsewhere in Europe. The improvements are still considerable and the impact is demonstrated in the steadily rising expectation of life. However, Scottish men and woman have almost the lowest expectation of life at birth in the EU (15 states).

4.2 Life Expectancy at Birth 2003-2005

4.2.1 **Table 1** and **Table 2** show the areas with the highest and lowest life expectancy at birth in Scotland for 2003-2005 for Council and NHS Board areas.

4.2.2 For males, amongst the Council areas, the lowest figure was for Glasgow City (69.9 years). This was the only area in Scotland where life expectancy at birth for males was

less than 70 years in 2003-2005. The Council area with the highest life expectancy for men was East Dunbartonshire (77.7 years), 7.8 years more than Glasgow City.

4.2.3 Orkney Islands has the highest life expectancy for females (81.4 years), 4.7 years more than Glasgow City, the area with the lowest figure (76.7 years).

4.2.4 Of the NHS Board areas, the lowest figure for both males and females was for the old Greater Glasgow area (71.9 and 77.8 years respectively). The highest was for Orkney for both males and females (76.3 and 81.4 years respectively).

4.2.5 **Table 3** and **Table 4** show expectation of life at an “exact age”. This is the average number of years that those at this age will live thereafter. These extracts from period life tables are constructed from the estimated population in 2003, 2004 and 2005 and the total number of deaths registered in these years. The column headed l_x shows the numbers who would survive to the exact age of x , out of 100,000 persons who, from birth, were subject to the mortality probabilities indicated by the death records for 2003-2005. The column headed e_x^o shows the expectation of life, that is, the average number of years of life left to persons aged exactly x who are subject to the 2003-2005 mortality probabilities from age x onwards. For example, on this basis a male aged 65 living in Glasgow City, could expect to live on average another 13.4 years, whereas a female aged 65 could expect to live on average another 17.1 years.

4.3 Accuracy of Results

4.3.1 Life expectancy at birth, like most statistics, is an estimate which is subject to a margin of error. The accuracy of the results can be indicated by calculating a confidence interval which provides a range of values within which the true underlying life expectancy would lie (with 95% probability).

4.3.2 The 95% confidence intervals for life expectancy at birth are given in **Table 5**, and are illustrated in **Figure 2** and **Figure 3** for Council and NHS Board areas within Scotland.

4.3.3 There is no simple “rule of thumb” for the size of confidence intervals, although it largely depends upon the size of the population, and so confidence intervals for areas with small populations tend to be wider. It is also worth noting that life expectancy results in these areas can be affected by the random variation in the number of annual deaths. This means that the results can be erratic and vary from year to year.

4.3.4 More information about the methods used to calculate the standard errors and confidence intervals used in this report can be found in the ONS methodology paper “Life expectancy at birth: methodological options for small populations”. See **Section 6.2.2** for how to access this report.

Figure 2 Life expectancy at birth 95% confidence intervals for Council areas, 2003-2005

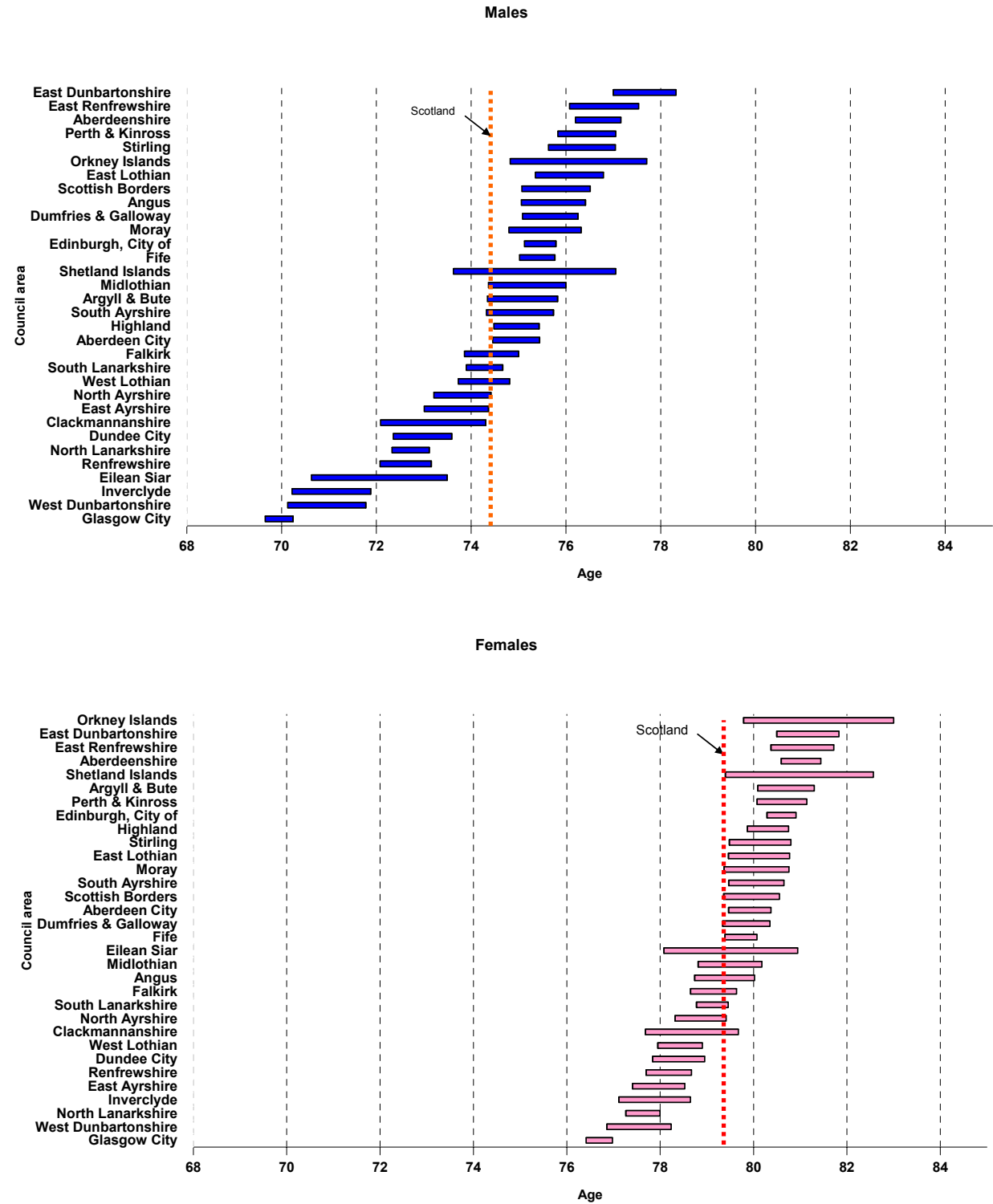
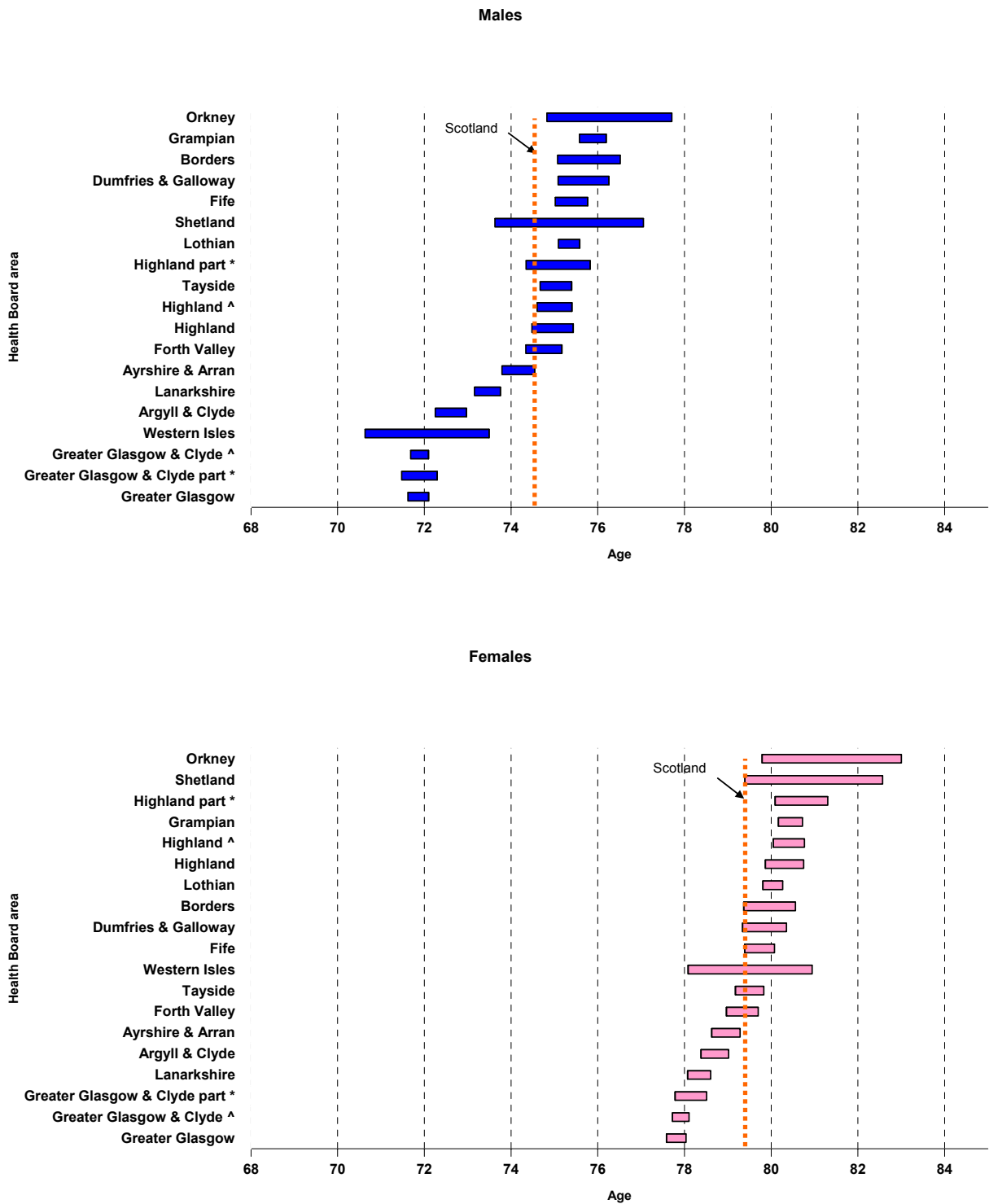


Figure 3 Life expectancy at birth 95% confidence intervals for NHS Board areas, 2003-2005



* Areas of former Argyll & Clyde inherited by new Boards on 1st April 2006.
^ New Board areas including parts of former Argyll & Clyde.

4.4 Comparisons between 1993-1995 and 2003-2005

4.4.1 Overall, life expectancy at birth in Scotland has increased since 1993-1995 from 71.9 years to 74.2 years for males and 77.5 years to 79.2 years for females in 2003-2005. **Table 1** and **Table 2** also show the highest and lowest ranking Council and NHS Board area for both periods. The tables show the gap between males and females is closing, from 5.6 years in 1993-1995 to 5.0 years in 2003-2005. For Council areas, the gap between highest and lowest areas for male life expectancy at birth is increasing (from 7.0 years in 1993-1995 to 7.8 years in 2003-2005). For females, the gap is also increasing (from 4.3 to 4.7 years).

4.4.2 The maps in **Figure 4a** and **Figure 4b** and the chart in **Figure 4c** show the Council areas with the highest and lowest percentage increase over the 10 year period. For males, the Shetland Islands had the largest increase with 5.9% and West Dunbartonshire the lowest with 0.1%. For females, Argyll & Bute had the largest increase with 3.5% and East Ayrshire the lowest with 0.9%.

4.4.3 **Figure 5** shows similar information for NHS Boards. For males, Shetland had the largest increase at 5.9% and the Western Isles the lowest with 1.0%. For females, the Highland part of the former Argyll & Clyde had the largest increase with 3.5% and Borders the lowest with 1.3%.

4.4.4 Over the 10 year period the ranking of many Council and NHS Boards has changed (**Table 1** and **Table 2**). For males, amongst the Council areas, the Shetland Islands has risen 13 places to 14th while Clackmannanshire has fallen 12 places to 25th. For females, Argyll & Bute has risen 12 places to 6th while Scottish Borders has fallen 10 places to 14th.

4.4.5 Of the NHS Boards, Shetland has risen 9 places to 6th and Forth Valley has fallen 6 places to 12th for males. For females, the Highland part of the former Argyll & Clyde area has risen 8 places to 3rd and Borders has fallen 6 places to 8th.

4.4.6 Of course, when confidence intervals for the results are taken into account, the rise and fall of the rankings over time are not exact, especially for areas with relatively small populations such as Orkney and Shetland. Confidence intervals for 1993-1995 are not presented here, but they are available from the Office for National Statistics (ONS) website through the following link:

<http://www.statistics.gov.uk/StatBase/Product.asp?vlnk=8841&Pos=&ColRank=1&Rank=2>

Figure 4a Percentage change in life expectancy at birth between 1993-95 and 2003-05, Council area, Males [Map]

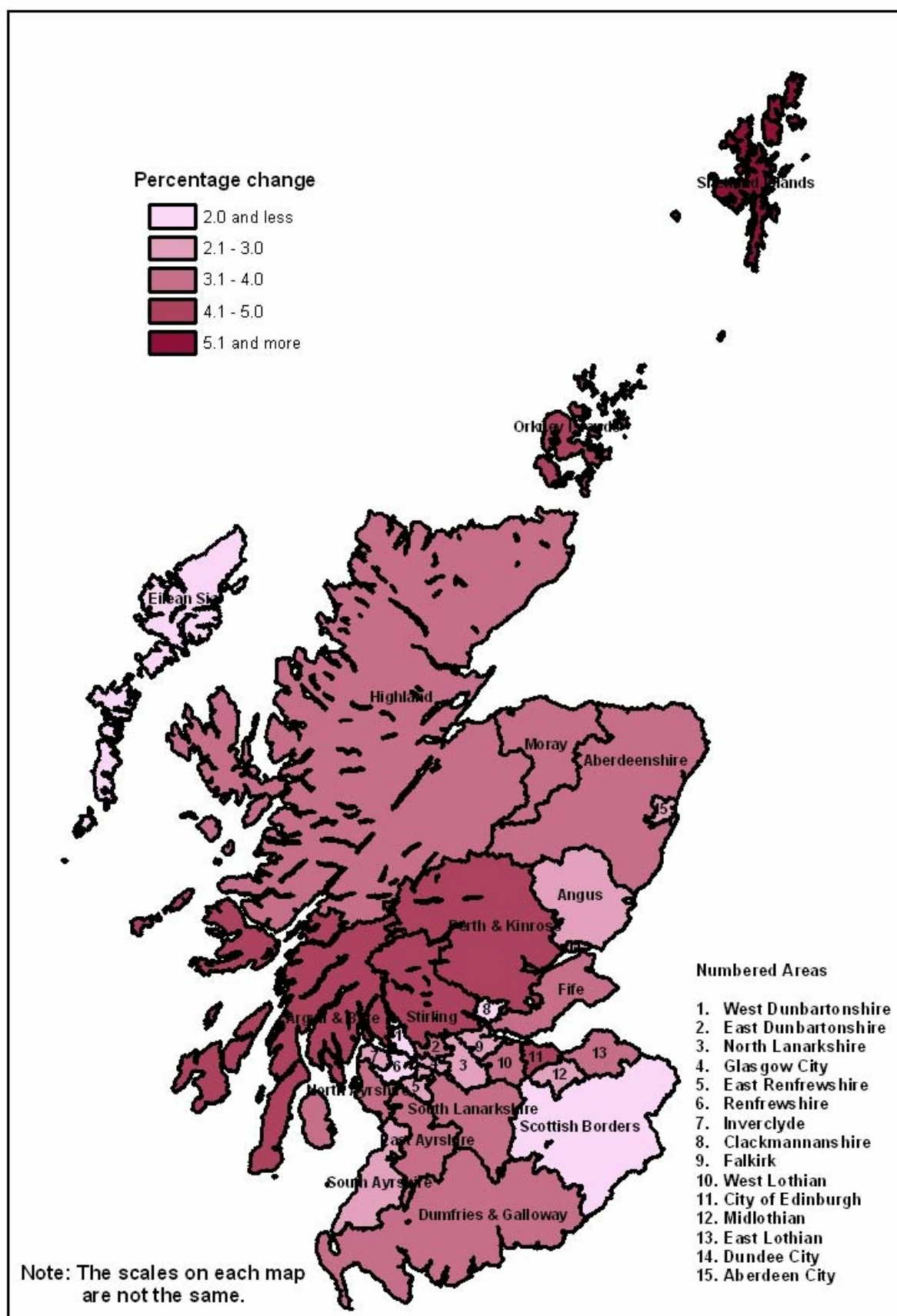


Figure 4b Percentage change in life expectancy at birth between 1993-95 and 2003-05, Council area, Females [Map]

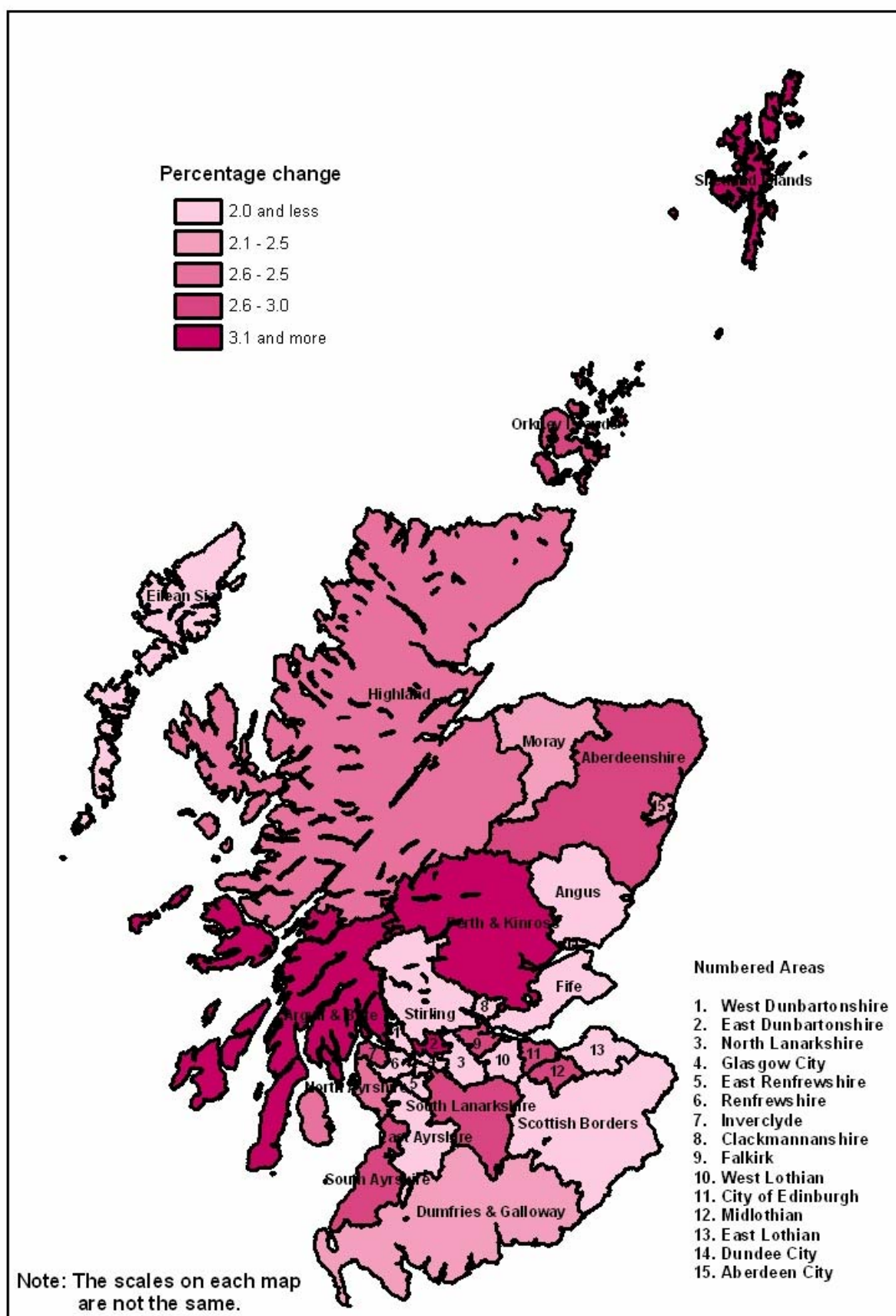


Figure 4c Percentage change in life expectancy at birth between 1993-95 and 2003-05, Council area, Males and Females

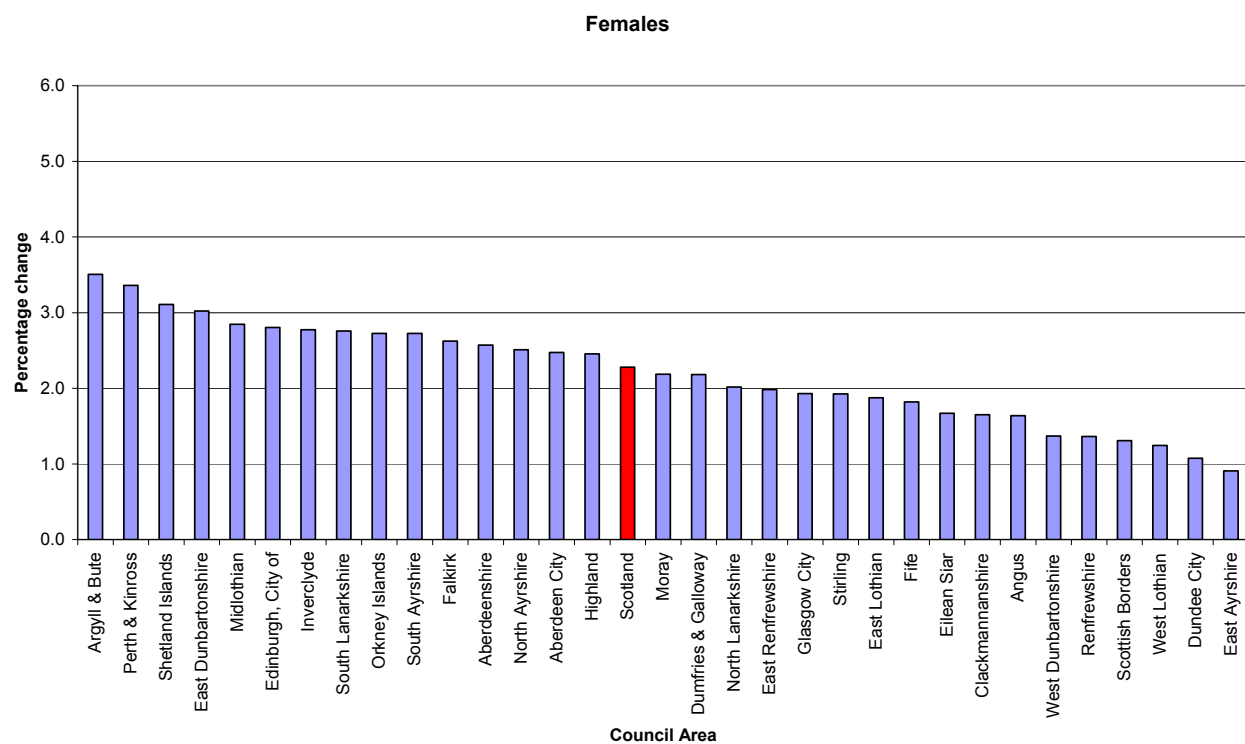
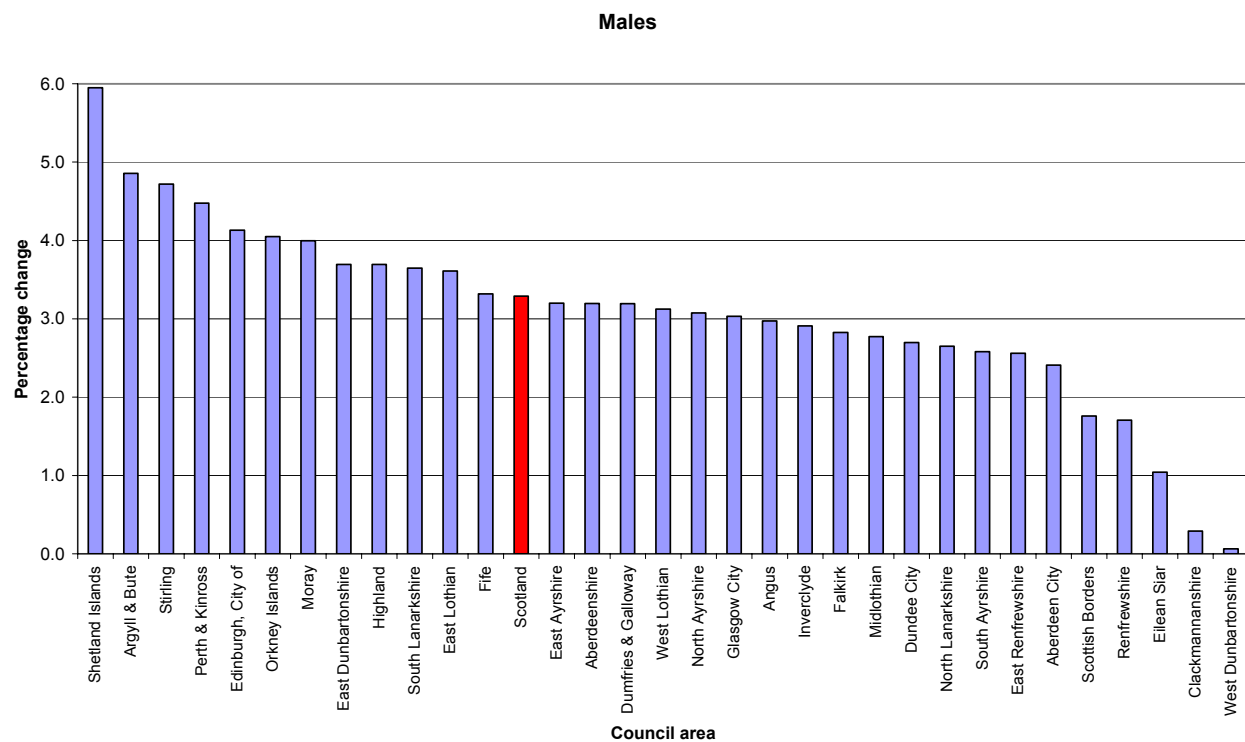
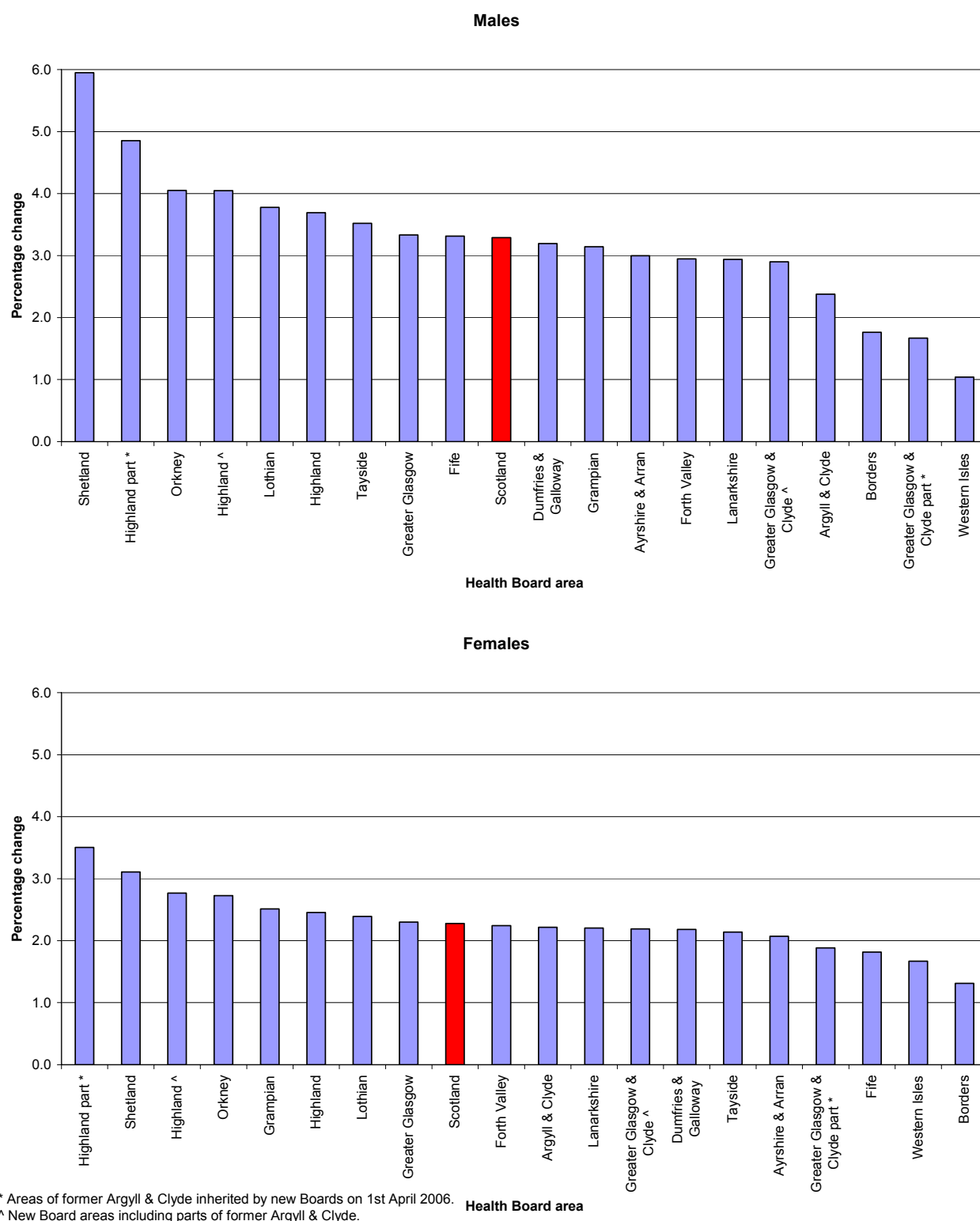


Figure 5 Percentage change in life expectancy at birth between 1993-95 and 2003-05, NHS Board area, Males and Females



* Areas of former Argyll & Clyde inherited by new Boards on 1st April 2006.

^ New Board areas including parts of former Argyll & Clyde.

4.5 Life Expectancy Figures from 1981-1983 and Comparisons with 2003-2005

4.5.1 Life expectancy data has been produced for the periods 1981-1983 to 1990-1992 to take account of the population estimates for the 1980's which were revised following the 2001 Census. This data will allow a more detailed comparison to be made of the long-term trends in life expectancy in different administrative areas. It is planned to carry out detailed statistical analyses of these trends, but in the meantime the following key points are presented for the 23 year period covered.

4.5.2 **Table 6** and **Table 7** show a historic time-series back to the period 1981-1983. Tables with more detail are available from the NRS website including life expectancy results for an "exact age":

- Council area [www.nrscotland.gov.uk/statistics-and-data/statistics/statistics-by-theme/life-expectancy/life-expectancy-in-scottish-areas/archive/admin-areas-2003-2005];
- NHS Board area [www.nrscotland.gov.uk/statistics-and-data/statistics/statistics-by-theme/life-expectancy/life-expectancy-in-scottish-areas/archive/admin-areas-2003-2005];
- Miscellaneous [www.nrscotland.gov.uk/statistics-and-data/statistics/statistics-by-theme/life-expectancy/life-expectancy-in-scottish-areas/archive/admin-areas-2003-2005].

4.5.3 Life expectancy at birth in Scotland has increased since 1981-1983 from 69.3 years to 74.2 years for males (4.9 years) and 75.5 years to 79.2 years for females (3.7 years). **Table 8** and **Table 9** show the highest and lowest ranking Council and NHS Board area for both periods. These tables also show that the gap between males and females is closing, from a gap of 6.2 years in 1981-83 to 5.0 years in 2003-2005. For Council areas, the gap between highest and lowest areas for male life expectancy at birth is increasing (from 5.0 years in 1981-83 to 7.8 years in 2003-2005). For females, the gap is similarly increasing (from 3.8 to 4.7 years).

4.5.4 The maps at **Figure 6a** and **Figure 6b** and the chart in **Figure 6c** show the Council areas with the highest and lowest percentage increase over the period. For males, Highland had the largest increase with 10.1% and West Dunbartonshire the lowest with 2.9%. For females, South Ayrshire had the largest increase with 6.8% and Angus the lowest with 2.3%.

4.5.5 **Figure 7** shows similar information for NHS Boards. For males, the old Highland area had the largest increase at 10.1% and Shetland the lowest with 5.0%. For females, Orkney had the largest increase with 6.6% and Western Isles the lowest with 3.3%.

4.5.6 It is important to note that the populations of Orkney, Shetland and Western Isles NHS Boards are small compared with the other areas, therefore their results should be looked at along with the confidence intervals supplied in the more detailed tables (see **Section 4.5.2** for details).

Figure 6a Percentage change in life expectancy at birth between 1981-83 and 2003-05, Council area, Males [Map]

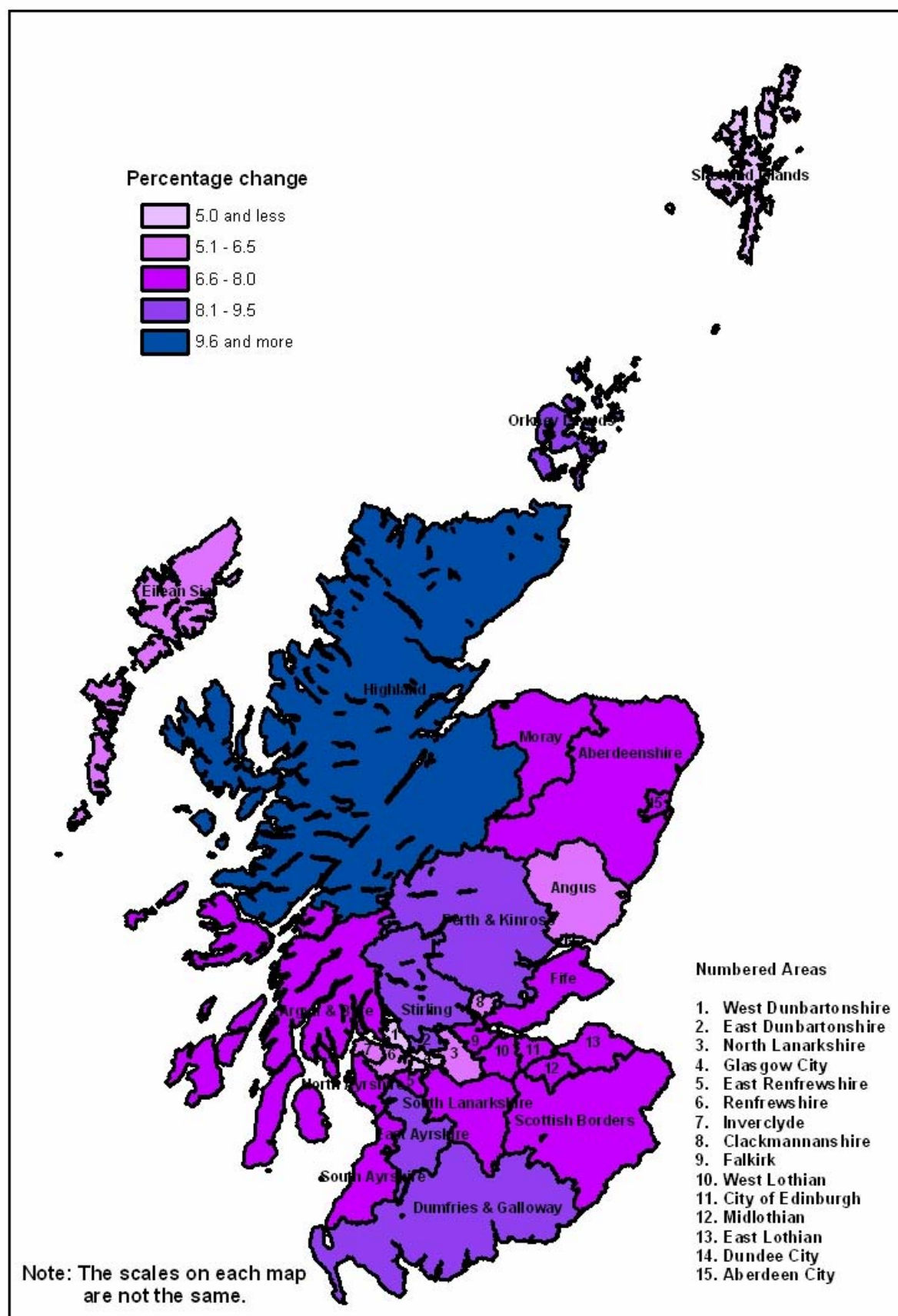


Figure 6b Percentage change in life expectancy at birth between 1981-83 and 2003-05, Council area, Females [Map]

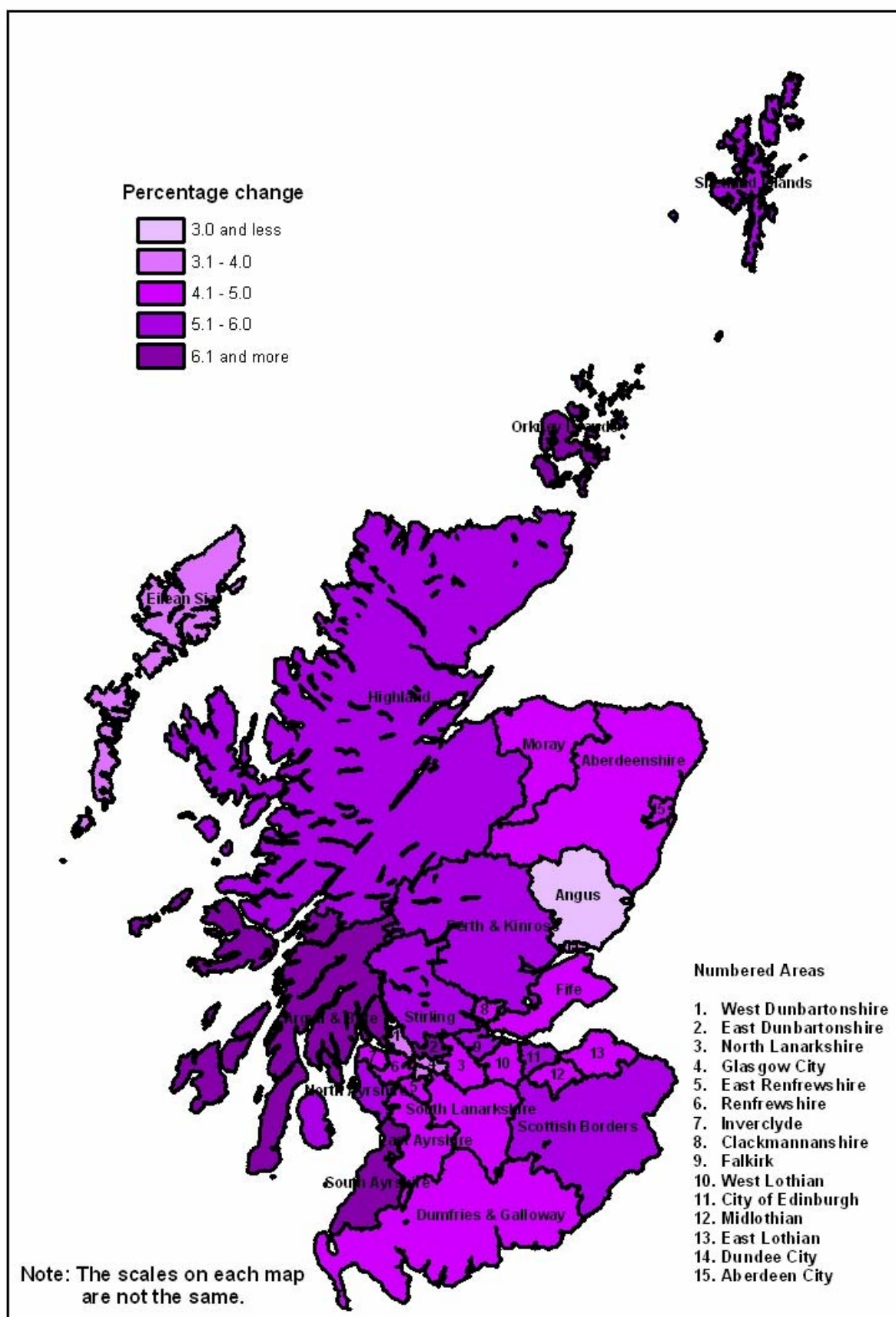


Figure 6c Percentage change in life expectancy at birth between 1981-83 and 2003-05, Council area, Males and Females

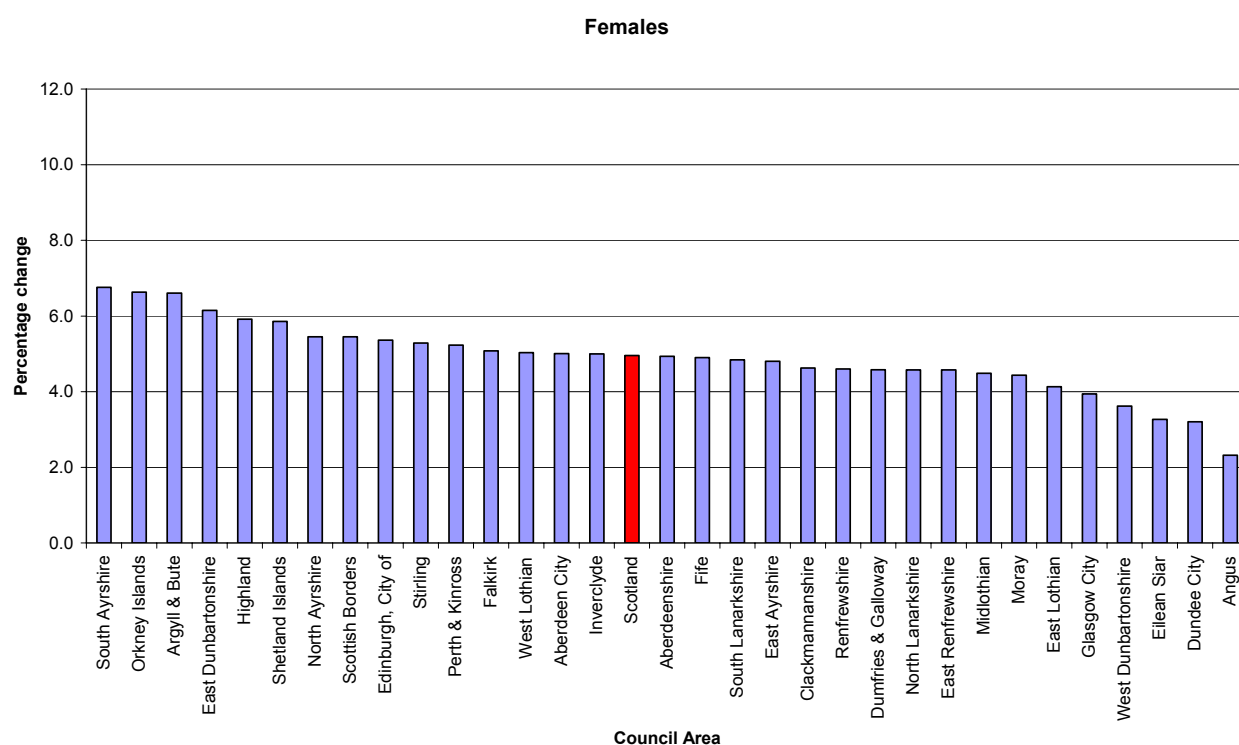
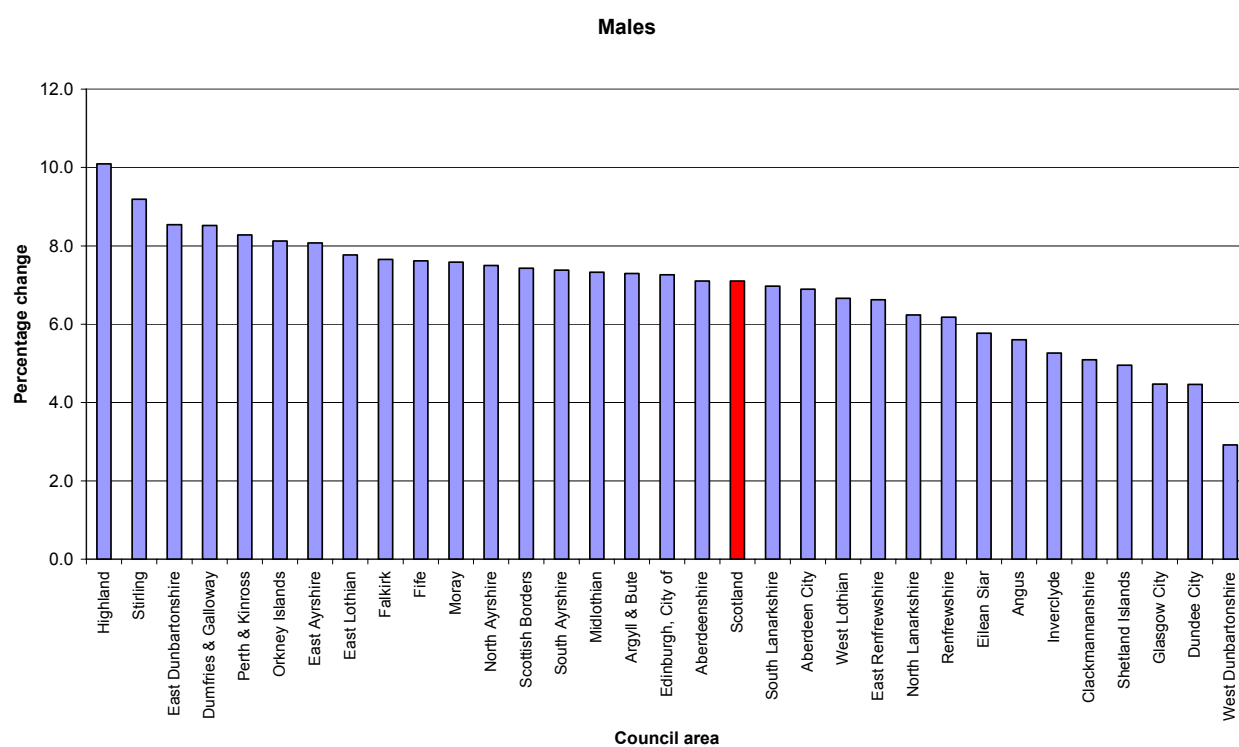
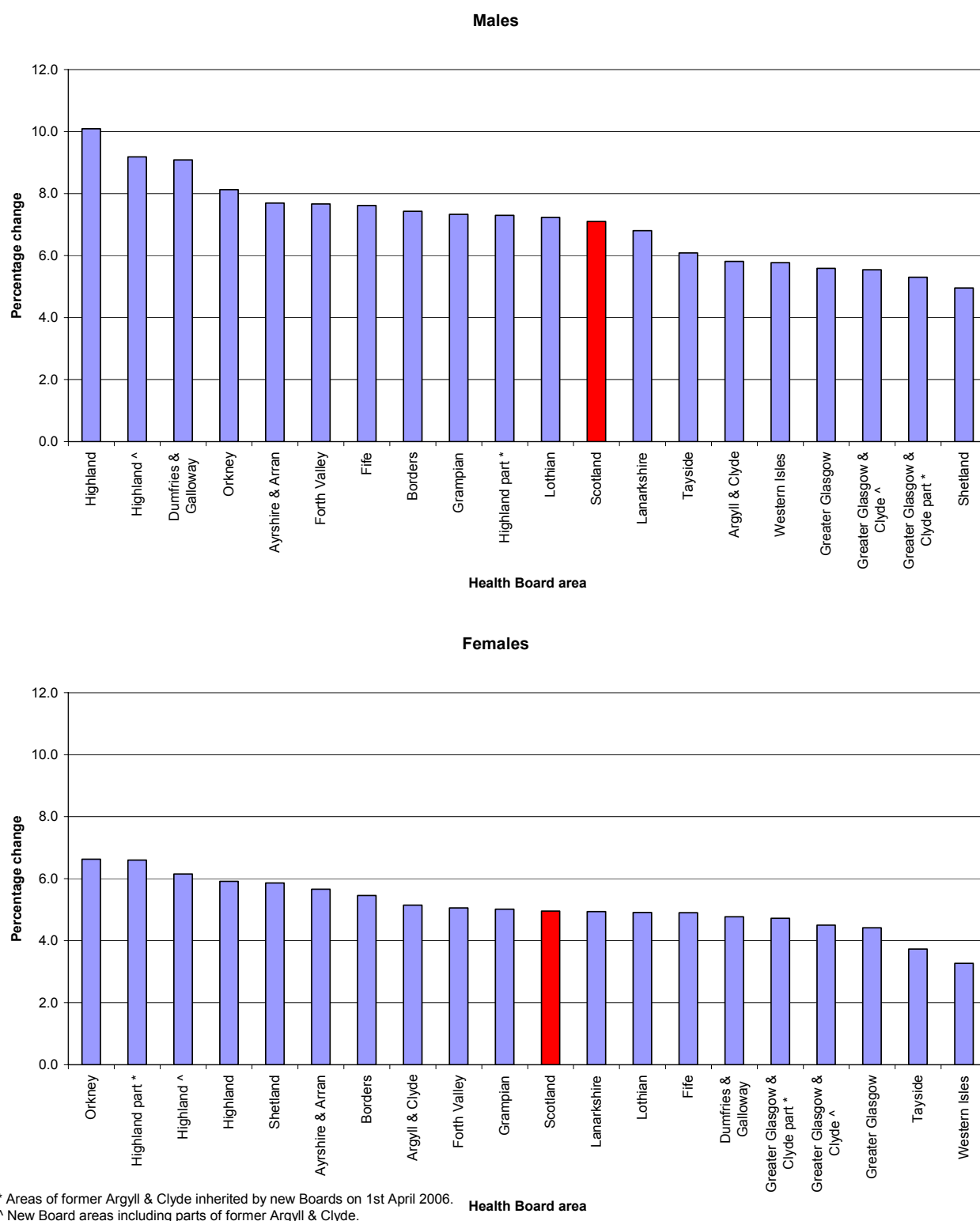


Figure 7 Percentage change in life expectancy at birth between 1981-83 and 2003-05, NHS Board area, Males and Females



* Areas of former Argyll & Clyde inherited by new Boards on 1st April 2006.

^ New Board areas including parts of former Argyll & Clyde.

5. Notes and Definitions

5.1 Following the dissolution of NHS Argyll & Clyde on 31st March 2006, it's area has been split between Greater Glasgow and Highland NHS Boards and the former has been renamed Greater Glasgow and Clyde. The calculation to produce figures for the new NHS Board areas in this report are as follows:

- NHS Highland = old NHS Highland plus Argyll & Bute Council area;
- NHS Greater Glasgow & Clyde = old NHS Greater Glasgow plus (old NHS Argyll & Clyde minus Argyll & Bute Council area).

5.2 The composition of the NHS Board areas in terms of Council areas is summarised in the table below. Maps of Council and NHS Board areas can be found on pages 18, 19 and 20.

NHS Board area	Council area
Argyll & Clyde	Argyll & Bute, East Renfrewshire (part), Inverclyde, Renfrewshire, West Dunbartonshire (part), Stirling (part)
Greater Glasgow & Clyde part¹	East Renfrewshire (part), Inverclyde, Renfrewshire, West Dunbartonshire (part), Stirling (part)
Highland part¹	Argyll & Bute
Greater Glasgow & Clyde²	East Dunbartonshire, East Renfrewshire, Glasgow City, Inverclyde, North Lanarkshire (part), Renfrewshire, South Lanarkshire (part), Stirling (part), West Dunbartonshire
Highland²	Argyll & Bute, Highland
Ayrshire & Arran	East Ayrshire, North Ayrshire, South Ayrshire
Borders	Scottish Borders
Dumfries & Galloway	Dumfries & Galloway
Fife	Fife (part)
Forth Valley	Clackmannanshire, Falkirk (part), Stirling (part), Perth & Kinross (part)
Grampian	Aberdeen City, Aberdeenshire, Moray
Greater Glasgow	East Dunbartonshire, East Renfrewshire (part), Glasgow City, North Lanarkshire (part), South Lanarkshire (part), West Dunbartonshire (part)
Highland	Highland
Lanarkshire	North Lanarkshire (part), South Lanarkshire (part), West Lothian (part), Falkirk (part)
Lothian	East Lothian, City of Edinburgh, Midlothian, West Lothian (part), Falkirk (part)
Orkney	Orkney Islands
Shetland	Shetland Islands
Tayside	Angus, Dundee City, Perth & Kinross (part), Fife (part)
Western Isles	Eilean Siar

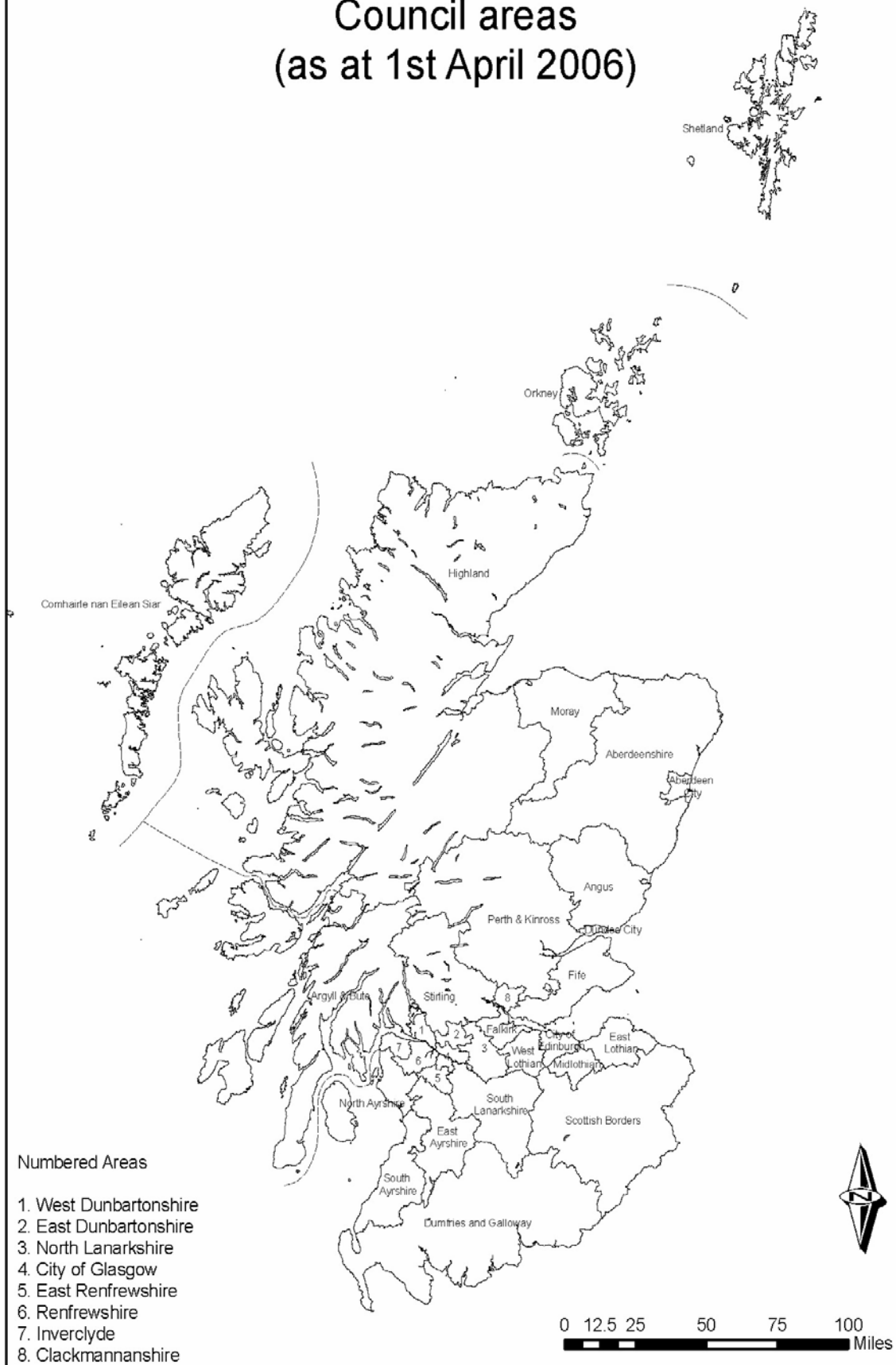
¹ Areas of former Argyll & Clyde inherited by new Boards on 1st April 2006.

² New Board areas including parts of former Argyll & Clyde.

Note: In practice there are some other very small "slivers" where NHS Board and Council area boundaries cross.

5.2.3 Data in future publications will be presented for the new NHS Board areas, but data on the components and old NHS Board areas will be also made available to allow historical comparisons.

Council areas (as at 1st April 2006)



NHS Board areas (as at 1st April 2006)



NHS Board areas (prior to 1st April 2006)



6. Further information

6.1 National Life Expectancy at Birth

6.1.1 The Government Actuary's Department (GAD) has produced national life tables for the UK and constituent countries, which give statistics on expectation of life. Every ten years GAD has produced a set of graduated (smoothed) life tables for Scotland. In addition, each year ungraduated interim life tables have been produced for Scotland, based on data for a period of three consecutive calendar years. These latter are available for 1980-1982 to 2002-2004 from their website:

http://www.gad.gov.uk/Life_Tables/Interim_life_tables.htm

Responsibility for the production of national life expectancy figures for the UK and its constituent countries transferred from GAD to the Office for National Statistics (ONS) on 31 January 2006.

6.1.2 Because of the differences between complete (single year of age) and abridged (grouped years) life tables, the Scotland level figures presented in this report may differ slightly from those published by GAD. A detailed description of the standard methods and notation associated with the calculation of life expectancy can be found on the GAD website:

http://www.gad.gov.uk/Life_Tables/methodology.htm

6.1.3 Period life expectancies are worked out using the age-specific mortality rates for a given period (either a single year, or a run of years), with no allowance for any later actual or projected changes in mortality. GAD also publishes 'cohort' life expectancies for selected ages. Cohort life expectancies are worked out using age-specific mortality rates which allow for known or projected changes in mortality in later years. More information can be found on the GAD website:

http://www.gad.gov.uk/Life_Tables/Period_and_cohort_eol.htm

6.1.4 ONS intends to publish Scotland level interim life tables for 2003-2005 in November 2006. Provisional figures for 2003-2005 are available in the vital events reference tables which go with "Scotland's Population 2005 - The Registrar General's Annual Review of Demographic Trends". These provisional results can be found on the NRS website:

[www.nrscotland.gov.uk/statistics-and-data/statistics/statistics-by-theme/vital-events/
general-publications/vital-events-reference-tables/archive/2005/section-5-deaths](http://www.nrscotland.gov.uk/statistics-and-data/statistics/statistics-by-theme/vital-events/general-publications/vital-events-reference-tables/archive/2005/section-5-deaths)

6.2 Life Expectancy for Scottish Administrative Areas

6.2.1 The first publication dedicated to life expectancy, titled "Life expectancy for administrative areas within Scotland, 2002-2004", produced by NRS on 6 October 2005, is available from our website:

[www.nrscotland.gov.uk/statistics-and-data/statistics/statistics-by-theme/life-expectancy/
life-expectancy-in-scottish-areas/archive/admin-area/2002-2004](http://www.nrscotland.gov.uk/statistics-and-data/statistics/statistics-by-theme/life-expectancy/life-expectancy-in-scottish-areas/archive/admin-area/2002-2004)

6.2.2 Life expectancy information for Council and NHS Board areas within Scotland from 1991-1993 to 2001-2003 is available on the National Statistics website, published on 15 October 2004, through the following link:

<http://www.statistics.gov.uk/StatBase/Product.asp?vlnk=8841>

This webpage also contains life expectancy results for local and health authorities in England, Wales and Northern Ireland.

6.2.3 A report which details the research undertaken by ONS to compare methodologies for calculating of life expectancy figures and confidence intervals can also be found on the National Statistics website:

http://www.statistics.gov.uk/downloads/theme_other/GSSMethodology_No_33.pdf

6.3 Other related data

6.3.1 Information on healthy life expectancy (HLE) was published in March 2004 by the Information and Statistics Division (ISD) of the NHS. HLE is defined as the number of years people can expect to live in good health. The difference between healthy and life expectancy indicates the length of time people can expect to spend in poor health. More information on this work is available on the Scottish Public Health Observatory (ScotPHO) website at:

http://www.scotpho.org.uk/web/site/home/Populationdynamics/Healthylifeexpectancy/hle_intro.asp

6.4 Other data available from the National Records of Scotland

6.4.1 Estimates on the resident population of Scotland are prepared by NRS each year. These are available by sex and single year of age for Council and NHS Board areas, together with historical data. Information is also available on a wide range of related topics such as small area population estimates, population projections, migration estimates and data from the 2001 and earlier Censuses. For further information please contact:

Statistics Customer Services
National Records of Scotland,
Ladywell House,
EDINBURGH,
EH12 7TF.
Telephone: 0131 314 4299
Fax: 0131 314 4696
Email: customer@gro-scotland.gsi.gov.uk

Table 1 Life expectancy at birth¹ in Scotland 2003-05 by administrative area, and comparisons with 1993-95 (Males)

	2003-05 Years	1993-95 Years	2003-05 Rank	1993-95 Rank	Difference in years	% difference
Scotland	74.2	71.9	-	-	2.4	3.3
Council						
Aberdeen City	75.0	73.2	19	9	1.8	2.4
Aberdeenshire	76.7	74.3	3	4	2.4	3.2
Angus	75.7	73.5	9	5	2.2	3.0
Argyll & Bute	75.1	71.6	16	23	3.5	4.9
Clackmannanshire	73.2	73.0	25	13	0.2	0.3
Dumfries & Galloway	75.7	73.3	10	7	2.3	3.2
Dundee City	73.0	71.1	26	28	1.9	2.7
East Ayrshire	73.7	71.4	24	24	2.3	3.2
East Dunbartonshire	77.7	74.9	1	1	2.8	3.7
East Lothian	76.1	73.4	7	6	2.7	3.6
East Renfrewshire	76.8	74.9	2	2	1.9	2.6
Edinburgh, City of	75.5	72.5	12	17	3.0	4.1
Eilean Siar	72.1	71.3	29	26	0.7	1.0
Falkirk	74.4	72.4	20	18	2.0	2.8
Fife	75.4	73.0	13	14	2.4	3.3
Glasgow City	69.9	67.9	32	32	2.1	3.0
Highland	75.0	72.3	18	19	2.7	3.7
Inverclyde	71.1	69.0	30	31	2.0	2.9
Midlothian	75.2	73.2	15	11	2.0	2.8
Moray	75.6	72.7	11	16	2.9	4.0
North Ayrshire	73.8	71.6	23	22	2.2	3.1
North Lanarkshire	72.7	70.8	27	30	1.9	2.7
Orkney Islands	76.3	73.3	6	8	3.0	4.1
Perth & Kinross	76.4	73.2	4	10	3.3	4.5
Renfrewshire	72.6	71.4	28	25	1.2	1.7
Scottish Borders	75.8	74.5	8	3	1.3	1.8
Shetland Islands	75.3	71.1	14	27	4.2	5.9
South Ayrshire	75.0	73.1	17	12	1.9	2.6
South Lanarkshire	74.3	71.7	21	21	2.6	3.6
Stirling	76.3	72.9	5	15	3.4	4.7
West Dunbartonshire	71.0	70.9	31	29	0.0	0.1
West Lothian	74.3	72.0	22	20	2.2	3.1
NHS Board						
Argyll & Clyde	72.6	70.9	15	16	1.7	2.4
Greater Glasgow & Clyde part ²	71.9	70.7	18	17	1.2	1.7
Highland part ²	75.1	71.6	8	12	3.5	4.9
Greater Glasgow & Clyde ³	71.9	69.9	17	18	2.0	2.9
Highland ³	75.0	72.1	10	10	2.9	4.0
Ayrshire & Arran	74.2	72.0	13	11	2.2	3.0
Borders	75.8	74.5	3	1	1.3	1.8
Dumfries & Galloway	75.7	73.3	4	3	2.3	3.2
Fife	75.4	73.0	5	5	2.4	3.3
Forth Valley	74.8	72.6	12	6	2.1	2.9
Grampian	75.9	73.6	2	2	2.3	3.1
Greater Glasgow	71.9	69.5	19	19	2.3	3.3
Highland	75.0	72.3	11	9	2.7	3.7
Lanarkshire	73.5	71.4	14	13	2.1	2.9
Lothian	75.3	72.6	7	7	2.7	3.8
Orkney	76.3	73.3	1	4	3.0	4.1
Shetland	75.3	71.1	6	15	4.2	5.9
Tayside	75.0	72.5	9	8	2.6	3.5
Western Isles	72.1	71.3	16	14	0.7	1.0

Source: 1993-95 figures provided by the Office for National Statistics.

¹ The results may vary from year to year, particularly those based on small populations.

² Areas of former Argyll & Clyde inherited by new Boards on 1st April 2006.

³ New Board areas including parts of former Argyll & Clyde.

Table 2 Life expectancy at birth¹ in Scotland 2003-05 by administrative area, and comparisons with 1993-95 (Females)

	2003-05 Years	1993-95 Years	2003-05 Rank	1993-95 Rank	Difference in years	% difference
Scotland	79.2	77.5	-	-	1.8	2.3
Council						
Aberdeen City	79.9	78.0	15	16	1.9	2.5
Aberdeenshire	81.0	79.0	4	3	2.0	2.6
Angus	79.4	78.1	20	15	1.3	1.6
Argyll & Bute	80.7	78.0	6	18	2.7	3.5
Clackmannanshire	78.7	77.4	24	22	1.3	1.6
Dumfries & Galloway	79.8	78.1	16	14	1.7	2.2
Dundee City	78.4	77.6	26	20	0.8	1.1
East Ayrshire	78.0	77.3	28	24	0.7	0.9
East Dunbartonshire	81.2	78.8	2	5	2.4	3.0
East Lothian	80.1	78.6	11	6	1.5	1.9
East Renfrewshire	81.0	79.5	3	1	1.6	2.0
Edinburgh, City of	80.6	78.4	8	9	2.2	2.8
Eilean Siar	79.5	78.2	18	13	1.3	1.7
Falkirk	79.1	77.1	21	26	2.0	2.6
Fife	79.7	78.3	17	12	1.4	1.8
Glasgow City	76.7	75.2	32	32	1.5	1.9
Highland	80.3	78.4	9	10	1.9	2.5
Inverclyde	77.9	75.8	29	31	2.1	2.8
Midlothian	79.5	77.3	19	23	2.2	2.8
Moray	80.1	78.3	12	11	1.7	2.2
North Ayrshire	78.9	76.9	23	28	1.9	2.5
North Lanarkshire	77.6	76.1	30	30	1.5	2.0
Orkney Islands	81.4	79.2	1	2	2.2	2.7
Perth & Kinross	80.6	78.0	7	17	2.6	3.4
Renfrewshire	78.2	77.1	27	25	1.1	1.4
Scottish Borders	80.0	78.9	14	4	1.0	1.3
Shetland Islands	81.0	78.5	5	8	2.4	3.1
South Ayrshire	80.1	77.9	13	19	2.1	2.7
South Lanarkshire	79.1	77.0	22	27	2.1	2.8
Stirling	80.1	78.6	10	7	1.5	1.9
West Dunbartonshire	77.5	76.5	31	29	1.0	1.4
West Lothian	78.4	77.5	25	21	1.0	1.2
NHS Board						
Argyll & Clyde	78.7	77.0	15	15	1.7	2.2
Greater Glasgow & Clyde part ²	78.1	76.7	17	16	1.4	1.9
Highland part ²	80.7	78.0	3	11	2.7	3.5
Greater Glasgow & Clyde ³	77.9	76.2	18	18	1.7	2.2
Highland ³	80.4	78.2	5	7	2.2	2.8
Ayrshire & Arran	79.0	77.4	14	14	1.6	2.1
Borders	80.0	78.9	8	2	1.0	1.3
Dumfries & Galloway	79.8	78.1	9	10	1.7	2.2
Fife	79.7	78.3	10	6	1.4	1.8
Forth Valley	79.3	77.6	13	13	1.7	2.2
Grampian	80.4	78.5	4	4	2.0	2.5
Greater Glasgow	77.8	76.1	19	19	1.7	2.3
Highland	80.3	78.4	6	5	1.9	2.5
Lanarkshire	78.3	76.6	16	17	1.7	2.2
Lothian	80.0	78.2	7	9	1.9	2.4
Orkney	81.4	79.2	1	1	2.2	2.7
Shetland	81.0	78.5	2	3	2.4	3.1
Tayside	79.5	77.8	12	12	1.7	2.1
Western Isles	79.5	78.2	11	8	1.3	1.7

Source: 1993-95 figures provided by the Office for National Statistics.

¹ The results may vary from year to year, particularly those based on small populations.

² Areas of former Argyll & Clyde inherited by new Boards on 1st April 2006.

³ New Board areas including parts of former Argyll & Clyde.

Table 3 Abridged life table, by sex, age and Council area, Scotland 2003-05

Age x	Scotland				Aberdeen City				Aberdeenshire				Angus				Argyll and Bute				Clackmannanshire			
	Males		Females		Males		Females		Males		Females		Males		Females		Males		Females		Males		Females	
	l_x	e_x^o	l_x	e_x^o	l_x	e_x^o	l_x	e_x^o	l_x	e_x^o	l_x	e_x^o	l_x	e_x^o	l_x	e_x^o	l_x	e_x^o	l_x	e_x^o	l_x	e_x^o	l_x	e_x^o
0	100,000	74.24	100,000	79.23	100,000	74.95	100,000	79.92	100,000	76.68	100,000	81.02	100,000	75.74	100,000	79.38	100,000	75.08	100,000	80.70	100,000	73.20	100,000	78.68
1	99,437	73.66	99,551	78.59	99,398	74.40	99,464	79.35	99,547	76.03	99,717	80.25	99,583	75.05	99,442	78.82	99,438	74.51	99,913	79.77	98,739	73.13	99,151	78.35
5	99,317	69.75	99,461	74.66	99,331	70.45	99,358	75.43	99,446	72.11	99,663	76.29	99,525	71.10	99,442	74.82	99,438	70.51	99,833	75.83	98,739	69.13	99,018	74.45
10	99,256	64.79	99,410	69.69	99,299	65.47	99,358	70.43	99,358	67.17	99,640	71.31	99,422	66.17	99,173	70.02	99,313	65.59	99,767	70.88	98,739	64.13	98,906	69.54
15	99,171	59.84	99,346	64.74	99,241	60.51	99,236	65.52	99,277	62.22	99,577	66.35	99,329	61.23	99,074	65.09	99,256	60.63	99,767	65.88	98,639	59.20	98,808	64.60
20	98,842	55.03	99,175	59.84	98,739	55.81	99,088	60.61	98,975	57.40	99,318	61.52	98,888	56.49	98,642	60.36	98,754	55.93	99,498	61.05	98,438	54.31	98,589	59.74
25	98,327	50.31	98,988	54.95	98,378	51.00	98,998	55.66	98,092	52.90	99,040	56.68	98,514	51.69	98,296	55.57	98,238	51.21	99,291	56.17	97,953	49.57	98,459	54.82
30	97,739	45.59	98,778	50.06	97,931	46.22	98,813	50.76	97,373	48.27	98,752	51.84	97,560	47.17	98,093	50.68	97,779	46.43	99,291	51.17	97,015	45.02	98,205	49.95
35	96,977	40.93	98,469	45.21	97,380	41.47	98,465	45.93	96,723	43.58	98,441	47.00	96,829	42.51	97,807	45.82	96,991	41.79	99,163	46.23	96,158	40.40	98,003	45.05
40	96,003	36.32	97,984	40.42	96,295	36.91	97,868	41.20	96,147	38.82	98,134	42.13	95,736	37.97	97,491	40.96	95,927	37.23	98,765	41.41	94,906	35.90	97,278	40.37
45	94,757	31.77	97,289	35.70	95,091	32.35	97,386	36.39	95,362	34.12	97,631	37.34	94,962	33.26	96,672	36.28	94,774	32.65	98,290	36.60	93,019	31.58	96,620	35.62
50	92,922	27.35	96,125	31.10	93,263	27.93	96,235	31.79	94,138	29.53	96,533	32.74	93,335	28.79	95,624	31.65	92,875	28.27	96,939	32.07	90,812	27.29	95,986	30.84
55	90,218	23.09	94,361	26.63	90,808	23.62	94,612	27.30	92,235	25.09	95,552	28.05	91,953	24.19	94,040	27.14	90,345	23.99	95,267	27.59	87,103	23.34	95,047	26.12
60	86,109	19.07	91,611	22.36	86,764	19.60	92,578	22.84	89,228	20.85	93,477	23.61	88,759	19.97	91,870	22.73	86,861	19.85	92,726	23.28	83,407	19.27	92,458	21.78
65	79,350	15.48	87,303	18.34	80,324	15.97	88,610	18.75	84,002	16.99	89,977	19.43	83,426	16.09	88,826	18.42	80,451	16.23	89,262	19.09	76,803	15.71	87,930	17.78
70	70,059	12.21	80,770	14.62	71,034	12.74	82,961	14.86	77,060	13.30	84,789	15.47	76,185	12.38	83,091	14.52	71,796	12.89	83,713	15.18	68,525	12.30	81,116	14.06
75	57,279	9.37	71,231	11.24	59,684	9.68	74,428	11.28	65,233	10.26	76,586	11.86	62,471	9.55	74,981	10.82	61,380	9.65	74,971	11.66	56,939	9.30	69,745	10.95
80	41,250	7.04	57,211	8.38	43,081	7.45	61,155	8.18	50,324	7.55	62,576	8.96	46,623	6.94	59,273	8.02	45,489	7.15	61,733	8.63	41,864	6.74	54,667	8.28
85	24,318	5.20	39,497	6.02	25,928	5.73	42,898	5.60	31,482	5.58	45,260	6.42	26,958	5.18	40,754	5.53	27,953	5.06	43,829	6.13	24,702	4.69	37,468	5.93
Age x	Dumfries and Galloway				Dundee City				East Ayrshire				East Dunbartonshire				East Lothian				East Renfrewshire			
	Males		Females		Males		Females		Males		Females		Males		Females		Males		Females		Males		Females	
	l_x	e_x^o	l_x	e_x^o	l_x	e_x^o	l_x	e_x^o	l_x	e_x^o	l_x	e_x^o	l_x	e_x^o	l_x	e_x^o	l_x	e_x^o	l_x	e_x^o	l_x	e_x^o	l_x	e_x^o
0	100,000	75.67	100,000	79.85	100,000	72.97	100,000	78.40	100,000	73.69	100,000	77.97	100,000	77.66	100,000	81.16	100,000	76.07	100,000	80.12	100,000	76.80	100,000	81.05
1	99,667	74.92	99,755	79.04	99,505	72.34	99,461	77.82	99,267	73.23	99,564	77.31	99,660	76.92	99,183	80.83	99,671	75.33	99,587	79.45	99,511	76.18	99,418	80.52
5	99,573	70.99	99,604	75.16	99,179	68.57	99,363	73.90	98,840	69.54	99,458	73.39	99,600	72.97	99,119	76.88	99,540	71.42	99,458	75.55	99,448	72.23	99,281	76.63
10	99,533	66.02	99,522	70.22	99,179	63.57	99,363	68.90	98,748	64.60	99,458	68.39	99,600	67.97	99,119	71.88	99,485	66.46	99,458	70.55	99,394	67.27	99,281	71.63
15	99,393	61.11	99,486	65.24	98,980	58.69	99,363	63.90	98,748	59.60	99,458	63.39	99,600	62.97	99,073	66.91	99,433	61.49	99,243	65.70	99,294	62.33	99,228	66.66
20	98,888	56.41	99,365	60.32	98,752	53.82	99,206	58.99	98,385	54.81	99,284	58.50	99,467	58.05	99,025	61.95	99,319	56.56	99,178	60.74	99,189	57.40	99,172	61.70
25	98,279	51.74	98,980	55.54	98,252	49.08	99,075	54.07	97,525	50.27	99,130	53.58	98,867	53.39	98,967	56.98	98,983	51.74	98,910	55.90	98,993	52.50	99,099	56.74
30	97,347	47.21	98,877	50.60	97,555	44.41	98,816	49.20	97,049	45.51	98,811	48.75	98,229	48.72	98,665	52.15	97,954	47.26	98,827	50.94	98,233	47.89	98,825	51.90
35	96,698	42.51	98,800	45.64	96,724	39.77	98,350	44.42	96,425	40.79	98,649	43.82	97,701	43.97	98,271	47.35	97,114	42.65	98,405	46.15	97,776	43.10	98,569	47.02
40	96,127	37.75	98,352	40.83	95,288	35.34	97,653	39.72	95,448	36.18	98,255	38.99	97,196	39.18	98,031	42.46	96,526	37.89	98,156	41.26	97,031	38.41	98,169	42.20
45	95,147	33.12	97,336	36.23	93,474	30.97	96,489	35.17	94,344	31.57	97,546	34.26	96,464	34.46	97,517	37.67	95,733	33.19	97,619	36.47	96,369	33.66	97,729	37.38
50	93,752	28.57	96,324	31.59	90,828	26.80	94,999	30.69	92,222	27.24	96,194	29.70	95,341	29.84	97,005	32.85	94,840	28.48	96,504	31.86	94,978	29.12	96,978	32.65
55	91,296	24.27	94,903	27.02	88,089	22.56	92,389	26.48	90,354	22.75	94,126	25.30	93,669	25.33	95,843	28.22	92,838	24.04	94,977	27.34	93,206	24.62	95,231	28.21
60	88,347	20.00	92,745	22.59	82,751	18.85	89,548	22.24	86,288	18.71	90,706	21.16	90,264	21.19	93,255	23.93	89,130	19.93	92,629	22.97	89,808	20.46	92,763	23.89
65	82,513	16.24	88,222	18.62	75,590	15.40	84,700	18.37	79,562	15.08	86,344	17.10	86,096	17.09	89,412	19.86	83,883	16.02	89,572	18.66	85,048	16.47	89,614	19.64
70	74,171	12.78	81,989	14.85	66,239	12.22	77,797	14.78	70,456	11.70	78,162	13.63	77,600	13.69	84,245	15.92	75,330	12.56	83,235	14.90	77,054	12.92	84,957	15.58
75	62,658	9.67	72,490	11.47	54,217	9.38	67,838	11.58	56,545	8.97	68,206	10.25	67,678	10.33	76,688	12.24	62,375	9.65	74,140	11.42	65,040	9.84	77,534	11.83
80	46,852	7.09	59,713	8.39	37,846	7.36	55,043	8.70	39,297	6.81	52,781	7.52	50,743	7.94	64,598	9.07	47,003	6.98	60,785	8.37	48,424	7.36	64,992	8.64
85	28,052	5.16	40,833	6.11	23,078	5.46	39,095	6.22	23,379	4.74	33,754	5.35	33,328	5.79	47,521	6.42	29,398	4.67	41,861	6.03	32,414	4.76	48,168	5.78

Table 3 (continued)

Age x	Edinburgh, City of				Eilean Siar				Falkirk				Fife				Glasgow City				Highland			
	Males		Females		Males		Females		Males		Females		Males		Females		Males		Females		Males		Females	
	l_x	e_x^o	l_x	e_x^o	l_x	e_x^o	l_x	e_x^o	l_x	e_x^o	l_x	e_x^o	l_x	e_x^o	l_x	e_x^o	l_x	e_x^o	l_x	e_x^o	l_x	e_x^o	l_x	e_x^o
0	100,000	75.46	100,000	80.60	100,000	72.06	100,000	79.51	100,000	74.43	100,000	79.14	100,000	75.39	100,000	79.73	100,000	69.95	100,000	76.69	100,000	74.96	100,000	80.31
1	99,446	74.88	99,489	80.01	100,000	71.06	99,473	78.93	99,232	74.01	99,674	78.40	99,410	74.84	99,602	79.05	99,390	69.38	99,489	76.09	99,725	74.16	99,747	79.51
5	99,400	70.91	99,373	76.10	100,000	67.06	99,473	74.93	99,074	70.12	99,674	74.40	99,324	70.90	99,529	75.11	99,259	65.47	99,386	72.17	99,636	70.23	99,652	75.58
10	99,370	65.93	99,342	71.13	99,773	62.21	99,254	70.09	99,037	65.15	99,557	69.49	99,228	65.97	99,463	70.15	99,152	60.54	99,375	67.17	99,532	65.30	99,401	70.77
15	99,329	60.96	99,283	66.17	99,582	57.32	99,254	65.09	99,003	60.17	99,485	64.53	99,085	61.06	99,389	65.20	99,082	55.58	99,281	62.23	99,437	60.36	99,327	65.82
20	99,136	56.07	99,188	61.23	98,986	52.65	99,254	60.09	98,684	55.35	99,370	59.61	98,698	56.29	99,128	60.37	98,819	50.72	99,055	57.37	98,898	55.67	99,270	60.86
25	98,861	51.22	99,073	56.30	96,890	48.74	97,907	55.89	98,337	50.54	99,133	54.74	98,243	51.54	98,771	55.58	98,305	45.97	98,918	52.45	98,349	50.97	99,082	55.97
30	98,404	46.45	98,946	51.36	95,838	44.25	97,634	51.03	97,818	45.80	99,058	49.78	97,718	46.80	98,545	50.70	97,679	41.25	98,665	47.57	97,844	46.22	98,784	51.13
35	97,951	41.65	98,770	46.45	94,997	39.62	97,634	46.03	97,311	41.02	98,761	44.92	97,177	42.05	98,310	45.82	96,521	36.71	98,141	42.81	96,987	41.61	98,364	46.34
40	97,216	36.94	98,369	41.63	94,661	34.75	97,128	41.26	96,429	36.37	98,473	40.05	96,364	37.38	97,848	41.02	94,785	32.34	97,337	38.15	96,025	37.00	97,868	41.56
45	95,928	32.41	97,792	36.86	92,909	30.36	96,788	36.40	95,452	31.72	97,707	35.34	95,248	32.79	97,209	36.27	92,676	28.02	96,363	33.51	94,797	32.44	97,129	36.86
50	94,144	27.97	96,713	32.25	90,366	26.14	95,379	31.90	94,098	27.14	96,740	30.67	93,761	28.27	96,145	31.65	89,660	23.88	94,782	29.03	93,062	28.00	95,943	32.28
55	91,313	23.76	95,067	27.76	87,376	21.95	93,650	27.44	91,385	22.87	94,811	26.24	91,673	23.86	94,358	27.20	85,066	20.03	92,238	24.76	90,372	23.76	94,448	27.75
60	87,451	19.70	92,572	23.44	83,968	17.74	89,847	23.50	87,339	18.82	92,318	21.89	88,266	19.68	91,896	22.86	78,829	16.42	88,429	20.72	86,440	19.73	92,091	23.40
65	80,651	16.15	88,780	19.34	76,526	14.22	85,964	19.45	80,407	15.22	88,118	17.81	82,446	15.90	88,248	18.70	68,823	13.44	82,223	17.09	80,677	15.96	88,205	19.32
70	72,466	12.69	82,971	15.51	66,831	10.92	80,544	15.59	70,468	12.02	81,894	13.97	74,220	12.38	82,317	14.87	56,539	10.82	73,576	13.81	71,737	12.64	82,927	15.39
75	59,884	9.84	74,584	11.98	53,164	8.09	72,646	12.01	56,264	9.42	71,079	10.72	61,420	9.44	72,449	11.55	42,714	8.51	62,571	10.79	58,895	9.85	74,446	11.86
80	43,898	7.51	61,561	8.98	35,747	5.81	61,022	8.82	41,545	6.87	56,032	7.93	45,160	6.94	59,076	8.60	28,170	6.62	48,267	8.25	44,611	7.20	61,986	8.74
85	26,926	5.67	44,992	6.37	18,770	3.80	45,023	6.07	23,869	5.11	37,352	5.64	26,111	5.18	40,903	6.32	15,317	5.07	32,116	6.14	27,546	5.11	44,043	6.28
Age x	Inverclyde				Midlothian				Moray				North Ayrshire				North Lanarkshire				Orkney Islands			
	Males		Females		Males		Females		Males		Females		Males		Females		Males		Females		Males		Females	
	l_x	e_x^o	l_x	e_x^o	l_x	e_x^o	l_x	e_x^o	l_x	e_x^o	l_x	e_x^o	l_x	e_x^o	l_x	e_x^o	l_x	e_x^o	l_x	e_x^o	l_x	e_x^o	l_x	e_x^o
0	100,000	71.05	100,000	77.88	100,000	75.18	100,000	79.50	100,000	75.56	100,000	80.06	100,000	73.81	100,000	78.87	100,000	72.72	100,000	77.63	100,000	76.26	100,000	81.39
1	99,106	70.69	98,976	77.69	99,278	74.73	99,919	78.56	99,226	75.15	99,614	79.37	99,452	73.22	99,505	78.26	99,414	72.15	99,322	77.16	100,000	75.26	98,879	81.31
5	98,951	66.80	98,895	73.75	99,133	70.83	99,695	74.73	99,079	71.25	99,373	75.56	99,314	69.32	99,364	74.37	99,154	68.34	99,233	73.22	100,000	71.26	98,879	77.31
10	98,951	61.80	98,895	68.75	99,000	65.93	99,695	69.73	98,958	66.34	99,242	70.66	99,314	64.32	99,322	69.40	99,138	63.35	99,199	68.25	100,000	66.26	98,879	72.31
15	98,829	56.87	98,830	63.79	98,940	60.96	99,632	64.78	98,958	61.34	99,242	65.66	99,279	59.34	99,285	64.42	99,031	58.41	99,151	63.28	100,000	61.26	98,639	67.48
20	98,771	51.90	98,770	58.83	98,692	56.11	99,568	59.82	98,739	56.47	99,046	60.78	98,990	54.51	99,135	59.51	98,698	53.60	98,917	58.42	99,473	56.58	98,639	62.48
25	97,742	47.42	98,637	53.90	98,137	51.41	99,404	54.91	98,092	51.83	98,762	55.95	98,290	49.88	98,875	54.66	98,172	48.87	98,756	53.52	99,091	51.78	98,639	57.48
30	96,583	42.96	98,482	48.98	97,465	46.75	98,903	50.18	97,680	47.03	98,678	50.99	97,874	45.08	98,737	49.74	97,641	44.13	98,572	48.61	98,294	47.18	98,266	52.69
35	95,519	38.41	97,985	44.22	96,780	42.06	98,536	45.35	97,107	42.30	98,563	46.05	97,004	40.46	98,371	44.91	96,734	39.52	98,222	43.78	97,687	42.46	98,266	47.69
40	94,096	33.96	97,309	39.51	95,740	37.49	98,195	40.50	96,223	37.66	98,172	41.23	95,951	35.88	97,925	40.11	95,707	34.91	97,689	39.00	96,855	37.81	97,391	43.10
45	92,489	29.50	96,386	34.86	94,992	32.77	97,444	35.79	95,223	33.03	97,726	36.40	94,872	31.26	97,246	35.37	94,138	30.45	96,993	34.26	96,244	33.03	96,742	38.37
50	90,044	25.24	95,253	30.25	93,863	28.13	96,497	31.12	93,781	28.50	96,539	31.82	92,888	26.87	95,941	30.82	92,134	26.06	95,753	29.67	94,454	28.61	96,297	33.54
55	85,915	21.33	93,044	25.91	91,393	23.83	94,923	26.60	91,849	24.05	95,216	27.23	90,020	22.65	93,832	26.45	89,269	21.82	93,564	25.31	91,664	24.40	95,610	28.76
60	80,346	17.64	89,951	21.71	88,045	19.64	92,300	22.28	88,508	19.86	92,489	22.96	85,553	18.70	91,056	22.18	84,153	17.99	90,387	21.11	88,131	20.28	93,833	24.26
65	72,246	14.33	84,754	17.89	82,717	15.74	88,720	18.08	82,957	16.02	89,097	18.73	78,287	15.20	86,475	18.22	76,145	14.62	84,950	17.30	82,081	16.59	91,062	19.92
70	61,940	11.30	77,423	14.35	73,519	12.40	81,338	14.49	74,968	12.46	82,741	14.98	68,399	12.04	80,042	14.49	64,891	11.72	77,595	13.71	76,703	12.58	85,540	16.04
75	49,050	8.61	66,842	11.22	60,808	9.47	71,954	11.06	62,295	9.49	74,324	11.39	56,054	9.14	71,001	11.02	52,226	8.96	66,387	10.60	63,536	9.67	79,598	12.06
80	32,976	6.59	53,766	8.35	44,257	7.07	55,923	8.51	44,903	7.20	61,950	8.17	39,668	6.89	57,068	8.09	36,792	6.67	50,915	8.06	49,153	6.77	64,778	9.24
85	18,430	4.82	35,770	6.29	25,658	5.39	37,311	6.51	27,044	5.30	41,979	5.87	22,441	5.25	38,979	5.69	20,379	5.03	33,010	6.07	30,496	4.38	48,528	6.50

Table 3 (continued)

Age x	Perth & Kinross				Renfrewshire				Scottish Borders				Shetland Islands				South Ayrshire				South Lanarkshire			
	Males		Females		Males		Females		Males		Females		Males		Females		Males		Females		Males		Females	
	l_x	e_x°	l_x	e_x°	l_x	e_x°	l_x	e_x°	l_x	e_x°	l_x	e_x°	l_x	e_x°	l_x	e_x°	l_x	e_x°	l_x	e_x°	l_x	e_x°	l_x	e_x°
0	100,000	76.44	100,000	80.61	100,000	72.62	100,000	78.18	100,000	75.79	100,000	79.96	100,000	75.34	100,000	80.98	100,000	75.03	100,000	80.06	100,000	74.28	100,000	79.12
1	99,611	75.74	99,688	79.86	99,388	72.07	99,558	77.53	99,291	75.33	99,549	79.32	98,696	75.33	99,384	80.48	99,206	74.63	99,731	79.28	99,634	73.56	99,625	78.42
5	99,565	71.77	99,640	75.90	99,351	68.09	99,448	73.61	99,234	71.38	99,430	75.41	98,696	71.33	98,831	76.92	98,961	70.81	99,597	75.38	99,614	69.57	99,605	74.43
10	99,565	66.77	99,553	70.96	99,286	63.14	99,448	68.61	99,182	66.41	99,430	70.41	98,696	66.33	98,831	71.92	98,797	65.92	99,597	70.38	99,596	64.58	99,567	69.46
15	99,345	61.92	99,474	66.02	99,165	58.21	99,353	63.68	99,135	61.44	99,382	65.45	98,299	61.59	98,831	66.92	98,701	60.98	99,548	65.41	99,563	59.60	99,516	64.49
20	98,915	57.18	99,221	61.18	98,638	53.51	99,167	58.79	98,818	56.63	99,326	60.48	97,861	56.86	98,831	61.92	98,183	56.29	99,348	60.54	99,158	54.84	99,357	59.59
25	98,202	52.57	98,991	56.32	98,132	48.77	98,843	53.98	97,715	52.24	98,883	55.74	97,012	52.33	98,473	57.14	97,796	51.50	98,870	55.82	98,615	50.12	99,210	54.68
30	97,517	47.92	98,654	51.50	97,583	44.03	98,559	49.12	96,984	47.62	98,738	50.82	96,507	47.59	98,204	52.29	97,393	46.71	98,613	50.96	98,163	45.34	99,092	49.74
35	96,708	43.30	98,422	46.61	96,678	39.42	98,203	44.29	96,254	42.96	98,400	45.98	95,449	43.09	97,985	47.40	96,580	42.08	98,368	46.08	97,214	40.76	98,845	44.86
40	95,860	38.66	98,114	41.75	95,515	34.87	97,670	39.52	95,672	38.20	98,170	41.09	94,487	38.51	97,786	42.49	95,940	37.34	97,892	41.29	96,462	36.06	98,468	40.02
45	94,953	34.01	97,457	37.02	94,104	30.35	97,079	34.75	94,606	33.61	97,660	36.29	93,786	33.78	97,400	37.65	94,896	32.73	97,238	36.55	95,427	31.42	97,910	35.23
50	93,612	29.46	96,345	32.42	92,009	25.99	96,048	30.09	93,297	29.04	96,797	31.59	91,794	29.45	96,555	32.96	93,579	28.15	96,443	31.83	93,525	27.01	96,876	30.58
55	91,619	25.05	95,281	27.75	88,855	21.82	94,249	25.62	91,060	24.70	95,161	27.09	89,954	25.01	94,876	28.49	91,445	23.75	95,089	27.25	90,742	22.76	95,057	26.12
60	88,393	20.87	93,021	23.36	83,811	17.98	90,820	21.49	88,123	20.44	92,781	22.72	87,261	20.70	91,202	24.54	88,021	19.58	92,388	22.98	86,509	18.76	92,036	21.89
65	83,444	16.96	89,675	19.14	76,050	14.56	86,287	17.49	83,026	16.54	88,792	18.63	81,720	16.93	87,368	20.51	81,906	15.85	88,718	18.82	79,670	15.15	87,394	17.92
70	76,287	13.32	84,496	15.16	65,528	11.50	79,319	13.81	76,747	12.68	83,461	14.66	74,479	13.34	81,720	16.75	73,318	12.42	83,063	14.93	70,122	11.87	80,749	14.19
75	65,075	10.18	76,114	11.56	52,103	8.82	68,780	10.54	64,629	9.59	75,115	11.01	61,855	10.55	77,119	13.01	59,832	9.65	74,188	11.42	57,197	8.99	71,090	10.78
80	49,740	7.55	62,091	8.60	35,784	6.70	53,386	7.86	48,781	6.90	60,811	8.01	47,238	8.04	65,161	9.61	43,172	7.41	59,875	8.55	39,833	6.82	56,365	7.95
85	31,385	5.50	44,687	5.98	19,793	5.10	35,451	5.57	28,952	4.91	42,509	5.39	30,492	6.08	49,742	6.82	27,035	5.34	41,467	6.24	22,634	5.10	37,673	5.65
Age x	Stirling				West Dunbartonshire				West Lothian															
	Males		Females		Males		Females		Males		Females													
	l_x	e_x°	l_x	e_x°	l_x	e_x°	l_x	e_x°	l_x	e_x°	l_x	e_x°	l_x	e_x°	l_x	e_x°	l_x	e_x°	l_x	e_x°	l_x	e_x°	l_x	e_x°
0	100,000	76.34	100,000	80.14	100,000	70.95	100,000	77.55	100,000	74.27	100,000	78.43												
1	99,716	75.55	99,689	79.39	98,509	71.03	99,425	76.99	99,589	73.58	99,834	77.56												
5	99,578	71.66	99,689	75.39	98,371	67.12	99,354	73.05	99,393	69.72	99,801	73.58												
10	99,516	66.70	99,689	70.39	98,371	62.12	99,289	68.09	99,272	64.80	99,677	68.67												
15	99,400	61.77	99,629	65.43	98,265	57.19	99,289	63.09	99,157	59.87	99,616	63.71												
20	99,294	56.84	99,576	60.47	97,815	52.44	99,079	58.22	98,915	55.01	99,455	58.81												
25	98,954	52.02	99,519	55.50	97,218	47.74	99,024	53.25	98,322	50.33	99,307	53.89												
30	98,592	47.20	98,987	50.78	96,017	43.31	98,709	48.41	97,740	45.61	99,169	48.97												
35	98,119	42.42	98,699	45.92	94,988	38.75	98,343	43.59	97,187	40.86	99,044	44.02												
40	97,430	37.70	98,328	41.09	93,830	34.20	97,788	38.82	96,413	36.17	98,397	39.30												
45	96,538	33.03	97,537	36.40	92,308	29.72	96,850	34.17	95,427	31.51	97,651	34.58												
50	94,703	28.62	96,245	31.86	90,384	25.30	95,068	29.76	93,966	26.97	96,156	30.08												
55	92,613	24.21	95,319	27.14	86,603	21.30	92,704	25.46	91,590	22.60	94,259	25.63												
60	90,004	19.84	92,961	22.77	81,771	17.41	89,568	21.26	87,288	18.59	91,002	21.46												
65	83,775	16.13	89,038	18.66	72,025	14.43	83,510	17.62	81,160	14.81	87,229	17.28												
70	75,688	12.58	82,230	15.00	62,674	11.21	75,994	14.12	70,640	11.64	79,501	13.72												
75	63,872	9.45	73,440	11.49	48,349	8.78	66,259	10.83	57,807	8.67	68,835	10.45												
80	45,360	7.29	58,655	8.76	33,889	6.47	51,186	8.28	39,948	6.42	53,897	7.66												
85	26,937	5.56	42,163	6.21	18,183	4.89	33,781	6.26	21,417	4.82	35,243	5.39												

Note : This abridged life table is constructed from the estimated population in 2003, 2004 and 2005 and the total number of deaths registered in these years. The column headed l_x shows the numbers who would survive to the exact age of x , out of 100,000 persons who, from birth, were subject to the mortality probabilities indicated by the death records for 2003-2005. Column e_x° shows the expectation of life, that is, the average number of years of life left to persons aged exactly x who are subject to the 2003-2005 mortality probabilities from age x onwards.

Table 4 Abridged life table, by sex, age and NHS Board area, Scotland 2003-05

Age x	Scotland				Argyll & Clyde				Greater Glasgow & Clyde part ¹				Highland part ¹				Greater Glasgow & Clyde ²				Highland ²			
	Males		Females		Males		Females		Males		Females		Males		Females		Males		Females		Males		Females	
	<i>l_x</i>	<i>e_x</i> ^o	<i>l_x</i>	<i>e_x</i> ^o	<i>l_x</i>	<i>e_x</i> ^o	<i>l_x</i>	<i>e_x</i> ^o	<i>l_x</i>	<i>e_x</i> ^o	<i>l_x</i>	<i>e_x</i> ^o	<i>l_x</i>	<i>e_x</i> ^o	<i>l_x</i>	<i>e_x</i> ^o	<i>l_x</i>	<i>e_x</i> ^o	<i>l_x</i>	<i>e_x</i> ^o	<i>l_x</i>	<i>e_x</i> ^o	<i>l_x</i>	<i>e_x</i> ^o
0	100,000	74.24	100,000	79.23	100,000	72.61	100,000	78.70	100,000	71.89	100,000	78.15	100,000	75.08	100,000	80.70	100,000	71.89	100,000	77.91	100,000	75.00	100,000	80.40
1	99,437	73.66	99,551	78.59	99,203	72.19	99,487	78.10	99,147	71.50	99,391	77.62	99,438	74.51	99,913	79.77	99,360	71.35	99,425	77.36	99,646	74.27	99,791	79.57
5	99,317	69.75	99,461	74.66	99,140	68.24	99,392	74.18	99,069	67.56	99,292	73.70	99,438	70.51	99,833	75.83	99,255	67.42	99,332	73.43	99,581	70.31	99,700	75.64
10	99,256	64.79	99,410	69.69	99,087	63.27	99,363	69.20	99,035	62.58	99,274	68.71	99,313	65.59	99,767	70.88	99,193	62.46	99,316	68.44	99,471	65.39	99,505	70.79
15	99,171	59.84	99,346	64.74	99,001	58.32	99,300	64.24	98,942	57.64	99,192	63.77	99,256	60.63	99,767	65.88	99,117	57.51	99,238	63.50	99,388	60.44	99,453	65.82
20	98,842	55.03	99,175	59.84	98,590	53.56	99,134	59.34	98,555	52.85	99,050	58.85	98,754	55.93	99,498	61.05	98,836	52.67	99,058	58.61	98,859	55.75	99,332	60.90
25	98,327	50.31	98,988	54.95	97,937	48.90	98,931	54.46	97,866	48.21	98,848	53.97	98,238	51.21	99,291	56.17	98,299	47.94	98,913	53.69	98,322	51.04	99,139	56.01
30	97,739	45.59	98,778	50.06	97,143	44.28	98,693	49.59	96,988	43.62	98,561	49.12	97,779	46.43	99,291	51.17	97,615	43.26	98,660	48.82	97,830	46.29	98,920	51.13
35	96,977	40.93	98,469	45.21	96,220	39.68	98,354	44.75	96,028	39.03	98,173	44.30	96,991	41.79	99,163	46.23	96,598	38.69	98,222	44.03	96,994	41.66	98,581	46.30
40	96,003	36.32	97,984	40.42	95,028	35.14	97,865	39.96	94,800	34.51	97,662	39.52	95,927	37.23	98,765	41.41	95,249	34.20	97,590	39.30	96,001	37.07	98,113	41.51
45	94,757	31.77	97,289	35.70	93,622	30.63	97,173	35.23	93,329	30.01	96,918	34.81	94,774	32.65	98,290	36.60	93,607	29.76	96,791	34.60	94,795	32.51	97,449	36.77
50	92,922	27.35	96,125	31.10	91,506	26.28	95,963	30.64	91,152	25.67	95,743	30.20	92,875	28.27	96,939	32.07	91,249	25.46	95,510	30.03	93,012	28.08	96,217	32.21
55	90,218	23.09	94,361	26.63	88,139	22.19	94,018	26.22	87,539	21.62	93,719	25.80	90,345	23.99	95,267	27.59	87,592	21.42	93,367	25.66	90,367	23.83	94,671	27.70
60	86,109	19.07	91,611	22.36	83,426	18.31	90,946	22.02	82,439	17.81	90,470	21.64	86,861	19.85	92,726	23.28	82,312	17.63	90,030	21.52	86,568	19.77	92,256	23.36
65	79,350	15.48	87,303	18.34	75,709	14.92	86,382	18.05	74,262	14.49	85,552	17.74	80,451	16.23	89,262	19.09	73,906	14.35	84,691	17.72	80,599	16.05	88,502	19.24
70	70,059	12.21	80,770	14.62	65,971	11.75	79,620	14.38	64,168	11.38	78,425	14.12	71,796	12.89	83,713	15.18	62,882	11.43	77,118	14.21	71,752	12.72	83,140	15.32
75	57,279	9.37	71,231	11.24	53,182	8.97	69,701	11.07	50,671	8.74	68,169	10.87	61,380	9.65	74,971	11.66	49,419	8.86	66,850	11.01	59,676	9.78	74,579	11.79
80	41,250	7.04	57,211	8.38	37,179	6.76	55,444	8.27	34,686	6.62	53,617	8.15	45,489	7.15	61,733	8.63	33,795	6.81	52,631	8.31	44,888	7.18	61,878	8.70
85	24,318	5.20	39,497	6.02	21,248	4.96	37,543	6.02	19,278	4.91	35,713	5.98	27,953	5.06	43,829	6.13	19,222	5.07	35,702	6.07	27,673	5.10	43,955	6.23
Age x	Ayrshire & Arran				Borders				Dumfries & Galloway				Fife				Forth Valley				Grampian			
	Males		Females		Males		Females		Males		Females		Males		Females		Males		Females		Males		Females	
	<i>l_x</i>	<i>e_x</i> ^o	<i>l_x</i>	<i>e_x</i> ^o	<i>l_x</i>	<i>e_x</i> ^o	<i>l_x</i>	<i>e_x</i> ^o	<i>l_x</i>	<i>e_x</i> ^o	<i>l_x</i>	<i>e_x</i> ^o	<i>l_x</i>	<i>e_x</i> ^o	<i>l_x</i>	<i>e_x</i> ^o	<i>l_x</i>	<i>e_x</i> ^o	<i>l_x</i>	<i>e_x</i> ^o	<i>l_x</i>	<i>e_x</i> ^o	<i>l_x</i>	<i>e_x</i> ^o
0	100,000	74.17	100,000	78.96	100,000	75.80	100,000	79.96	100,000	75.67	100,000	79.85	100,000	75.39	100,000	79.73	100,000	74.76	100,000	79.33	100,000	75.88	100,000	80.44
1	99,323	73.67	99,588	78.28	99,291	75.34	99,549	79.32	99,667	74.92	99,755	79.04	99,410	74.84	99,602	79.05	99,292	74.29	99,596	78.65	99,439	75.31	99,603	79.76
5	99,059	69.86	99,461	74.38	99,234	71.38	99,430	75.42	99,573	70.99	99,604	75.16	99,324	70.90	99,529	75.10	99,167	70.38	99,573	74.67	99,343	71.38	99,501	75.84
10	98,981	64.92	99,444	69.39	99,182	66.41	99,430	70.42	99,533	66.02	99,522	70.22	99,228	65.97	99,463	70.15	99,129	65.41	99,493	69.73	99,268	66.43	99,466	70.87
15	98,941	59.94	99,416	64.41	99,135	61.44	99,382	65.45	99,393	61.11	99,486	65.24	99,085	61.06	99,389	65.20	99,058	60.45	99,420	64.78	99,209	61.47	99,394	65.92
20	98,561	55.16	99,244	59.52	98,818	56.63	99,326	60.48	98,888	56.41	99,365	60.32	98,698	56.29	99,128	60.37	98,830	55.58	99,308	59.85	98,848	56.69	99,191	61.05
25	97,902	50.52	98,958	54.68	97,714	52.24	98,883	55.74	98,279	51.74	98,980	55.54	98,243	51.54	98,771	55.58	98,463	50.78	99,150	54.94	98,272	52.01	99,022	56.15
30	97,468	45.73	98,726	49.80	96,984	47.62	98,738	50.82	97,347	47.21	98,877	50.60	97,718	46.80	98,544	50.70	97,911	46.05	98,919	50.06	97,745	47.27	98,814	51.26
35	96,702	41.07	98,464	44.93	96,253	42.96	98,400	45.99	96,698	42.51	98,800	45.64	97,177	42.05	98,310	45.81	97,353	41.30	98,640	45.20	97,151	42.55	98,518	46.41
40	95,794	36.44	98,027	40.12	95,672	38.21	98,170	41.09	96,127	37.75	98,352	40.83	96,364	37.38	97,848	41.02	96,458	36.66	98,252	40.37	96,327	37.89	98,090	41.60
45	94,717	31.82	97,346	35.38	94,606	33.61	97,660	36.29	95,147	33.12	97,336	36.23	95,247	32.79	97,208	36.27	95,342	32.06	97,496	35.66	95,349	33.25	97,603	36.79
50	92,897	27.40	96,185	30.78	93,297	29.05	96,797	31.59	93,752	28.57	96,324	31.59	93,760	28.27	96,144	31.65	93,690	27.58	96,488	31.01	93,863	28.74	96,471	32.20
55	90,584	23.03	94,326	26.34	91,060	24.70	95,161	27.09	91,296	24.27	94,903	27.02	91,672	23.86	94,357	27.20	90,983	23.33	95,038	26.44	91,748	24.34	95,202	27.59
60	86,570	18.99	91,367	22.11	88,123	20.44	92,781	22.72	88,347	20.00	92,745	22.59	88,263	19.68	91,894	22.86	87,461	19.17	92,565	22.08	88,313	20.19	93,029	23.18
65	79,830	15.38	87,140	18.06	83,025	16.54	88,792	18.63	82,513	16.24	88,222	18.62	82,443	15.90	88,245	18.70	80,769	15.55	88,389	18.01	82,591	16.42	89,377	19.02
70	70,593	12.06	80,401	14.36	76,746	12.69	83,461	14.66	74,171	12.78	81,989	14.85	74,214	12.38	82,314	14.87	71,693	12.20	81,871	14.24	74,557	12.92	83,784	15.13
75	57,399	9.26	71,121	10.91	64,629	9.60	75,115	11.01	62,658	9.67	72,490	11.47	61,413	9.44	72,444	11.55	58,596	9.37	71,595	10.92	62,717	9.89	75,390	11.53
80	40,665	7.05	56,604	8.07	48,781	6.91	60,811	8.02	46,852	7.09	59,713	8.39	45,152	6.94	59,072	8.60	42,683	6.93	56,605	8.16	46,563	7.45	61,964	8.49
85	24,244	5.12	38,102	5.77	29,000	4.91	42,550	5.39	28,052	5.16	40,833	6.11	26,106	5.18	40,898	6.32	24,841	5.12	38,748	5.76	28,504	5.58	43,753	5.98

Table 4 (continued)

Age x	Greater Glasgow				Highland				Lanarkshire				Lothian				Orkney				Shetland			
	Males		Females		Males		Females		Males		Females		Males		Females		Males		Females		Males		Females	
	l_x	e_x°	l_x	e_x°	l_x	e_x°	l_x	e_x°	l_x	e_x°	l_x	e_x°	l_x	e_x°	l_x	e_x°	l_x	e_x°	l_x	e_x°	l_x	e_x°	l_x	e_x°
0	100,000	71.86	100,000	77.81	100,000	74.96	100,000	80.31	100,000	73.45	100,000	78.34	100,000	75.34	100,000	80.04	100,000	76.26	100,000	81.39	100,000	75.34	100,000	80.98
1	99,436	71.27	99,437	77.25	99,725	74.16	99,747	79.51	99,470	72.85	99,475	77.75	99,488	74.72	99,630	79.33	100,000	75.26	98,879	81.31	98,696	75.33	99,384	80.48
5	99,322	67.34	99,347	73.32	99,636	70.23	99,652	75.58	99,313	68.96	99,411	73.80	99,384	70.80	99,521	75.42	100,000	71.26	98,879	77.31	98,696	71.33	98,831	76.92
10	99,248	62.39	99,332	68.33	99,532	65.30	99,401	70.77	99,293	63.97	99,381	68.82	99,317	65.84	99,475	70.45	100,000	66.26	98,879	72.31	98,696	66.33	98,831	71.92
15	99,180	57.43	99,254	63.38	99,437	60.36	99,327	65.82	99,214	59.02	99,343	63.84	99,254	60.88	99,393	65.51	100,000	61.26	98,639	67.48	98,299	61.59	98,831	66.92
20	98,937	52.57	99,061	58.50	98,898	55.67	99,270	60.86	98,845	54.23	99,148	58.97	99,054	56.00	99,291	60.57	99,473	56.58	98,639	62.48	97,861	56.86	98,831	61.92
25	98,446	47.82	98,933	53.57	98,349	50.97	99,082	55.97	98,307	49.51	98,992	54.05	98,707	51.19	99,159	55.65	99,091	51.78	98,639	57.48	97,012	52.33	98,473	57.14
30	97,816	43.11	98,689	48.70	97,844	46.22	98,784	51.13	97,814	44.75	98,838	49.13	98,180	46.45	99,007	50.73	98,294	47.18	98,266	52.69	96,507	47.59	98,204	52.29
35	96,781	38.55	98,235	43.91	96,987	41.61	98,364	46.34	96,879	40.16	98,511	44.29	97,652	41.69	98,801	45.83	97,687	42.46	98,266	47.69	95,449	43.09	97,985	47.40
40	95,385	34.07	97,556	39.20	96,025	37.00	97,868	41.56	95,933	35.53	98,043	39.49	96,900	36.99	98,367	41.02	96,855	37.81	97,391	43.10	94,487	38.51	97,786	42.49
45	93,675	29.65	96,734	34.51	94,797	32.44	97,129	36.86	94,631	30.98	97,410	34.73	95,799	32.39	97,737	36.27	96,244	33.03	96,742	38.37	93,786	33.78	97,400	37.65
50	91,247	25.37	95,412	29.95	93,062	28.00	95,943	32.28	92,662	26.59	96,279	30.11	94,265	27.88	96,577	31.68	94,454	28.61	96,297	33.54	91,794	29.45	96,555	32.96
55	87,572	21.33	93,218	25.60	90,372	23.76	94,448	27.75	89,840	22.35	94,277	25.69	91,672	23.59	94,899	27.19	91,664	24.40	95,610	28.76	89,954	25.01	94,876	28.49
60	82,216	17.56	89,842	21.47	86,440	19.73	92,091	23.40	85,166	18.44	91,166	21.49	87,783	19.53	92,240	22.91	88,131	20.28	93,833	24.26	87,261	20.70	91,202	24.54
65	73,715	14.29	84,325	17.71	80,677	15.96	88,205	19.32	77,686	14.97	86,194	17.58	81,507	15.84	88,573	18.75	82,081	16.59	91,062	19.92	81,720	16.93	87,368	20.51
70	62,315	11.45	76,575	14.25	71,737	12.64	82,927	15.39	67,436	11.87	79,299	13.89	72,642	12.47	82,127	15.03	76,703	12.58	85,540	16.04	74,479	13.34	81,720	16.75
75	48,882	8.91	66,311	11.06	58,895	9.85	74,446	11.86	54,837	9.02	68,752	10.64	59,951	9.58	73,135	11.57	63,536	9.67	79,598	12.06	61,855	10.55	75,119	13.01
80	33,414	6.88	52,225	8.37	44,611	7.20	61,986	8.74	38,623	6.75	53,523	7.96	43,669	7.22	59,480	8.65	49,153	6.77	64,778	9.24	47,238	8.04	65,161	9.61
85	19,170	5.14	35,653	6.11	27,546	5.11	44,043	6.28	21,604	5.10	34,989	5.85	26,229	5.36	42,089	6.19	30,496	4.38	48,528	6.50	30,492	6.08	49,742	6.82

Age x	Tayside				Western Isles			
	Males		Females		Males		Females	
	l_x	e_x°	l_x	e_x°	l_x	e_x°	l_x	e_x°
0	100,000	75.03	100,000	79.50	100,000	72.06	100,000	79.51
1	99,562	74.36	99,531	78.87	100,000	71.06	99,473	78.93
5	99,412	70.47	99,479	74.92	100,000	67.06	99,473	74.93
10	99,382	65.49	99,369	70.00	99,773	62.21	99,254	70.09
15	99,206	60.61	99,311	65.03	99,582	57.32	99,254	65.09
20	98,854	55.81	99,055	60.20	98,986	52.65	99,254	60.09
25	98,321	51.10	98,855	55.31	96,890	48.74	97,907	55.89
30	97,566	46.48	98,587	50.46	95,838	44.25	97,634	51.03
35	96,771	41.84	98,252	45.62	94,997	39.62	97,634	46.03
40	95,652	37.30	97,804	40.82	94,661	34.75	97,128	41.26
45	94,475	32.73	96,917	36.17	92,909	30.36	96,788	36.40
50	92,594	28.35	95,692	31.60	90,366	26.14	95,379	31.90
55	90,536	23.93	93,961	27.14	87,376	21.95	93,650	27.44
60	86,613	19.90	91,537	22.79	83,968	17.74	89,847	23.50
65	80,782	16.16	87,775	18.66	76,526	14.22	85,964	19.45
70	72,764	12.67	81,789	14.84	66,831	10.92	80,544	15.59
75	60,522	9.72	72,818	11.36	53,164	8.09	72,646	12.01
80	44,523	7.32	58,774	8.48	35,747	5.81	61,022	8.82
85	27,110	5.41	41,616	5.94	18,770	3.80	45,023	6.07

Note : This abridged life table is constructed from the estimated population in 2003, 2004 and 2005 and the total number of deaths registered in these years. The column headed l_x shows the numbers who would survive to the exact age of x , out of 100,000 persons who, from birth, were subject to the mortality probabilities indicated by the death records for 2003-2005. Column e_x° shows the expectation of life, that is, the average number of years of life left to persons aged exactly x who are subject to the 2003-2005 mortality probabilities from age x onwards.

¹ Areas of former Argyll & Clyde inherited by new Boards on 1st April 2006.

² New Board areas including parts of former Argyll & Clyde.

Table 5 Life expectancy at birth¹ in Scotland 2003-05 by administrative area, with 95% upper and lower confidence intervals (Males and Females)

	Males			Females		
	Expectation of	Lower 95%	Upper 95%	Expectation	Lower 95%	Upper 95%
	life at birth	CI	CI	of life at birth	CI	CI
	Years	Years	Years	Years	Years	Years
Scotland	74.2	74.1	74.3	79.2	79.1	79.3
Council						
Aberdeen City	75.0	74.5	75.4	79.9	79.5	80.4
Aberdeenshire	76.7	76.2	77.2	81.0	80.6	81.4
Angus	75.7	75.1	76.4	79.4	78.7	80.0
Argyll & Bute	75.1	74.3	75.8	80.7	80.1	81.3
Clackmannanshire	73.2	72.1	74.3	78.7	77.7	79.7
Dumfries & Galloway	75.7	75.1	76.3	79.8	79.3	80.4
Dundee City	73.0	72.4	73.6	78.4	77.8	79.0
East Ayrshire	73.7	73.0	74.4	78.0	77.4	78.5
East Dunbartonshire	77.7	77.0	78.3	81.2	80.5	81.8
East Lothian	76.1	75.4	76.8	80.1	79.5	80.8
East Renfrewshire	76.8	76.1	77.5	81.0	80.4	81.7
Edinburgh, City of	75.5	75.1	75.8	80.6	80.3	80.9
Eilean Siar	72.1	70.6	73.5	79.5	78.1	80.9
Falkirk	74.4	73.9	75.0	79.1	78.7	79.6
Fife	75.4	75.0	75.8	79.7	79.4	80.1
Glasgow City	69.9	69.7	70.2	76.7	76.4	77.0
Highland	75.0	74.5	75.4	80.3	79.9	80.7
Inverclyde	71.1	70.2	71.9	77.9	77.1	78.6
Midlothian	75.2	74.4	76.0	79.5	78.8	80.2
Moray	75.6	74.8	76.3	80.1	79.4	80.8
North Ayrshire	73.8	73.2	74.4	78.9	78.3	79.4
North Lanarkshire	72.7	72.3	73.1	77.6	77.3	78.0
Orkney Islands	76.3	74.8	77.7	81.4	79.8	83.0
Perth & Kinross	76.4	75.8	77.1	80.6	80.1	81.1
Renfrewshire	72.6	72.1	73.2	78.2	77.7	78.7
Scottish Borders	75.8	75.1	76.5	80.0	79.4	80.6
Shetland Islands	75.3	73.6	77.1	81.0	79.4	82.6
South Ayrshire	75.0	74.3	75.7	80.1	79.5	80.7
South Lanarkshire	74.3	73.9	74.7	79.1	78.8	79.5
Stirling	76.3	75.6	77.0	80.1	79.5	80.8
West Dunbartonshire	71.0	70.1	71.8	77.5	76.9	78.2
West Lothian	74.3	73.7	74.8	78.4	77.9	78.9
NHS Board						
Argyll & Clyde	72.6	72.2	73.0	78.7	78.4	79.0
Greater Glasgow & Clyde part ²	71.9	71.5	72.3	78.1	77.8	78.5
Highland part ²	75.1	74.3	75.8	80.7	80.1	81.3
Greater Glasgow & Clyde ³	71.9	71.7	72.1	77.9	77.7	78.1
Highland ³	75.0	74.6	75.4	80.4	80.0	80.8
Ayrshire & Arran	74.2	73.8	74.5	79.0	78.6	79.3
Borders	75.8	75.1	76.5	80.0	79.4	80.6
Dumfries & Galloway	75.7	75.1	76.3	79.8	79.3	80.4
Fife	75.4	75.0	75.8	79.7	79.4	80.1
Forth Valley	74.8	74.3	75.2	79.3	79.0	79.7
Grampian	75.9	75.6	76.2	80.4	80.2	80.7
Greater Glasgow	71.9	71.6	72.1	77.8	77.6	78.0
Highland	75.0	74.5	75.4	80.3	79.9	80.7
Lanarkshire	73.5	73.2	73.8	78.3	78.1	78.6
Lothian	75.3	75.1	75.6	80.0	79.8	80.3
Orkney	76.3	74.8	77.7	81.4	79.8	83.0
Shetland	75.3	73.6	77.1	81.0	79.4	82.6
Tayside	75.0	74.7	75.4	79.5	79.2	79.8
Western Isles	72.1	70.6	73.5	79.5	78.1	80.9

¹ The results may vary from year to year, particularly those based on small populations.

² Areas of former Argyll & Clyde inherited by new Boards on 1st April 2006.

³ New Board areas including parts of former Argyll & Clyde.

Table 6 Life expectancy at birth¹ in Scotland 1981-83 to 2003-05 by administrative area (Males)

	1981-83	1982-84	1983-85	1984-86	1985-87	1986-88	1987-89	1988-90	1989-91	1990-92	1991-93	1992-94	1993-95	1994-96	1995-97	1996-98	1997-99	1998-2000	1999-2001	2000-02	2001-03	2002-04	2003-05
	Years	Years	Years	Years	Years	Years	Years	Years	Years	Years	Years	Years	Years	Years	Years	Years	Years	Years	Years	Years	Years	Years	Years
Scotland	69.3	69.6	69.8	70.0	70.2	70.3	70.5	70.7	71.0	71.4	71.5	71.7	71.9	72.1	72.3	72.4	72.7	72.9	73.1	73.3	73.5	73.8	74.2
Council																							
Aberdeen City	70.1	70.2	70.6	70.8	71.1	70.9	71.1	71.1	71.6	72.2	72.7	73.2	73.2	72.9	72.8	73.2	73.7	73.8	73.7	73.9	74.1	74.4	75.0
Aberdeenshire	71.6	71.7	71.6	71.4	71.8	72.2	72.6	72.8	73.4	73.8	73.9	73.9	74.3	74.9	75.1	75.1	75.2	75.2	75.5	76.0	76.1	76.3	76.7
Angus	71.7	71.7	71.7	72.1	72.0	71.8	71.7	72.1	72.9	73.1	73.4	73.3	73.5	73.5	74.1	74.6	75.0	74.7	74.7	74.7	75.3	75.7	75.7
Argyll & Bute	70.0	70.1	70.6	70.8	71.1	71.2	71.4	71.5	71.7	71.9	72.0	71.5	71.6	72.2	72.9	72.9	72.8	73.1	73.6	74.5	74.8	74.8	75.1
Clackmannanshire	69.7	70.4	70.1	70.0	69.8	70.1	69.7	70.1	70.9	71.3	71.5	72.1	73.0	73.0	72.7	72.7	72.7	73.2	73.2	73.4	73.5	73.2	73.2
Dumfries & Galloway	69.7	70.2	70.8	71.0	70.9	71.2	71.2	72.0	72.0	72.7	72.5	73.0	73.3	73.7	73.9	74.1	74.3	74.9	74.9	75.2	74.8	75.4	75.7
Dundee City	69.9	69.4	69.6	69.6	70.1	69.2	68.7	68.4	69.7	70.8	71.1	70.9	71.1	71.3	71.5	71.7	71.7	71.9	71.8	72.1	72.0	72.5	73.0
East Ayrshire	68.2	68.4	69.0	69.8	70.1	70.1	70.1	69.9	70.5	71.1	71.5	71.3	71.4	72.1	72.4	73.0	72.6	73.0	72.5	72.8	72.5	73.5	73.7
East Dunbartonshire	71.6	72.2	72.5	73.1	72.8	72.7	72.6	72.8	73.1	73.3	74.0	74.3	74.9	74.8	75.0	74.8	75.8	75.9	76.5	76.5	77.2	77.0	77.7
East Lothian	70.6	70.7	70.7	70.6	71.5	71.7	72.1	72.2	72.9	73.3	73.2	73.4	73.4	73.8	74.0	74.0	74.3	74.6	75.6	75.7	75.6	75.6	76.1
East Renfrewshire	72.0	72.1	72.1	72.1	72.4	72.9	73.3	74.0	74.2	74.9	74.7	75.0	74.9	75.5	75.7	75.9	76.3	75.9	76.1	75.7	76.0	76.4	76.8
Edinburgh, City of	70.3	70.3	70.5	70.6	70.9	71.1	71.5	71.6	71.7	71.6	71.7	72.1	72.5	72.6	72.8	73.2	73.6	73.9	73.9	74.4	74.8	75.3	75.5
Eilean Siar	68.1	67.9	68.8	69.0	70.0	69.5	69.5	69.6	70.2	70.6	70.6	71.3	71.3	71.0	70.4	70.4	70.9	71.7	72.3	72.3	71.6	72.2	72.1
Falkirk	69.1	69.4	69.9	70.3	70.1	70.0	70.1	70.3	70.9	71.5	71.8	72.0	72.4	72.5	72.8	72.7	73.1	73.3	73.6	73.6	73.7	73.9	74.4
Fife	70.1	70.5	70.7	70.9	71.1	71.2	71.4	71.8	72.3	72.6	72.5	72.7	73.0	73.1	73.3	73.4	73.8	74.0	74.5	74.3	74.6	74.7	75.4
Glasgow City	67.0	67.2	67.5	67.4	67.5	67.5	67.6	67.8	68.0	68.4	68.2	68.2	67.9	68.0	68.2	68.5	68.5	68.4	68.7	68.9	69.1	69.3	69.9
Highland	68.1	68.5	69.0	69.4	69.5	69.8	70.0	70.8	70.9	71.4	71.5	72.0	72.3	72.5	72.7	72.8	73.0	72.9	73.2	73.8	74.4	74.5	75.0
Inverclyde	67.5	68.0	68.1	68.0	68.4	69.0	69.0	68.6	68.9	69.4	69.6	69.2	69.0	68.8	69.2	69.3	69.7	70.0	70.3	70.6	70.2	70.3	71.1
Midlothian	70.0	70.6	70.5	70.8	71.1	71.6	71.9	72.1	72.4	72.4	72.6	73.1	73.2	73.4	73.1	73.1	73.5	73.7	74.2	74.1	74.6	74.9	75.2
Moray	70.2	70.4	70.2	70.4	71.4	71.8	72.3	71.6	72.1	72.3	72.9	72.6	72.7	73.0	73.9	74.4	74.6	74.5	74.3	74.0	74.1	74.9	75.6
North Ayrshire	68.7	68.8	69.8	69.6	69.7	69.7	70.2	71.1	71.2	71.5	71.1	71.6	71.6	71.9	71.8	72.0	72.5	72.6	72.5	72.3	72.7	73.3	73.8
North Lanarkshire	68.5	68.8	69.0	69.2	69.3	69.8	69.9	70.2	70.1	70.4	70.2	70.6	70.8	71.2	71.1	71.2	71.4	71.8	71.8	72.0	71.9	72.4	72.7
Orkney Islands	70.5	71.5	70.5	70.2	70.0	70.3	70.2	69.9	70.8	72.2	73.1	73.0	73.3	73.3	73.4	73.4	73.4	74.0	74.4	75.4	75.9	76.5	76.3
Perth & Kinross	70.6	71.1	71.6	71.7	71.2	71.6	71.6	71.7	71.6	72.4	72.7	73.2	73.2	73.6	73.9	74.5	74.8	75.3	75.4	76.0	76.0	76.3	76.4
Renfrewshire	68.4	68.4	68.5	68.8	69.4	69.7	70.3	70.6	70.6	70.4	70.5	70.7	71.4	71.5	71.6	71.3	71.0	71.1	71.7	71.9	71.9	71.8	72.6
Scottish Borders	70.6	71.0	71.7	71.9	72.1	72.4	72.6	72.7	72.6	72.8	73.5	74.1	74.5	74.8	74.7	74.9	74.9	75.1	75.7	75.4	75.4	75.2	75.8
Shetland Islands	71.8	71.4	71.4	71.2	70.1	70.6	71.7	72.4	72.5	72.3	72.1	71.3	71.1	71.6	72.1	72.1	72.9	74.2	74.9	75.0	73.6	74.2	75.3
South Ayrshire	69.9	70.0	69.9	70.3	70.6	70.9	71.5	72.0	71.9	72.3	72.0	72.9	73.1	73.7	73.4	73.3	73.8	74.1	74.2	73.9	74.0	74.5	75.0
South Lanarkshire	69.4	69.8	70.4	70.5	70.8	70.9	71.0	71.0	71.4	71.7	71.6	71.7	71.7	72.1	72.3	72.6	72.5	72.8	73.4	73.8	74.0	73.9	74.3
Stirling	69.9	70.2	70.0	70.3	70.7	71.1	71.4	71.8	71.9	72.0	71.7	72.2	72.9	73.2	73.7	73.7	74.4	74.6	75.0	75.2	75.5	75.7	76.3
West Dunbartonshire	68.9	69.1	68.8	68.8	68.8	69.0	69.3	69.1	69.3	68.9	69.5	70.2	70.9	70.4	69.3	69.5	69.9	70.7	70.8	70.8	70.8	70.7	71.0
West Lothian	69.6	70.0	70.1	70.2	70.3	70.3	70.4	70.6	71.1	71.4	71.3	71.6	72.0	72.4	72.3	71.9	72.1	72.4	72.9	73.4	73.5	74.3	74.3
NHS Board																							
Argyll & Clyde	68.6	68.8	69.0	69.1	69.4	69.9	70.2	70.3	70.4	70.5	70.6	70.6	70.9	71.0	71.2	71.1	71.2	71.4	71.8	72.0	72.0	72.0	72.6
Greater Glasgow & Clyde p	68.3	68.4	68.5	68.6	69.0	69.5	69.9	70.0	70.1	70.1	70.2	70.3	70.7	70.6	70.7	70.6	70.7	70.9	71.3	71.4	71.2	71.2	71.9
Highland part ²	70.0	70.1	70.6	70.8	71.1	71.2	71.4	71.5	71.7	71.9	72.0	71.5	71.6	72.2	72.9	72.9	72.8	73.1	73.6	74.5	74.8	74.8	75.1
Greater Glasgow & Clyde ³	68.1	68.4	68.6	68.6	68.8	68.9	69.1	69.3	69.4	69.7	69.8	69.9	69.9	69.9	70.1	70.2	70.4	70.4	70.8	71.0	71.1	71.2	71.9
Highland ³	68.7	69.0	69.5	69.9	70.0	70.2	70.5	71.0	71.2	71.6	71.7	71.9	72.1	72.4	72.7	72.9	72.9	73.0	73.3	74.0	74.5	74.6	75.0
Ayrshire & Arran	68.9	69.0	69.6	69.9	70.1	70.2	70.5	71.0	71.2	71.6	71.5	71.9	72.0	72.5	72.5	72.7	72.9	73.2	73.0	72.9	73.0	73.7	74.2
Borders	70.6	71.0	71.7	71.9	72.1	72.4	72.6	72.7	72.6	72.8	73.5	74.1	74.5	74.8	74.7	74.9	74.9	75.1	75.7	75.4	75.4	75.2	75.8
Dumfries & Galloway	69.4	69.8	70.5	70.7	70.7	69.9	69.0	69.7	70.8	72.6	72.5	73.0	73.3	73.7	73.9	74.1	74.3	74.9	74.9	75.2	74.8	75.4	75.7
Fife	70.1	70.5	70.7	70.9	71.1	71.2	71.4	71.8	72.3	72.6	72.5	72.7	73.0	73.1	73.3	73.4	73.8	74.0	74.5	74.3	74.6	74.7	75.4
Forth Valley	69.4	69.8	70.0	70.3	70.2	70.3	70.4	70.7	71.2	71.6	71.7	72.0	72.6	72.8	73.0	73.0	73.4	73.6	73.9	74.0	74.2	74.3	74.8
Grampian	70.7	70.8	70.9	70.9	71.4	71.6	71.9	71.9	72.5	72.9	73.2	73.4	73.6	73.7	74.0	74.2	74.5	74.5	74.6	74.8	75.0	75.4	75.9
Greater Glasgow	68.1	68.3	68.6	68.6	68.7	68.7	68.8	69.0	69.2	69.6	69.6	69.7	69.5	69.6	69.8	70.0	70.2	70.3	70.6	70.8	71.0	71.2	71.9
Highland	68.1	68.5	69.0	69.4	69.5	69.8	70.0	70.8	70.9	71.4	71.5	72.0	72.3	72.5	72.7	72.8	73.0	72.9	73.2	73.8	74.4	74.5	75.0
Lanarkshire	68.8	69.2	69.6	69.8	70.0	70.3	70.5	70.7	70.8	71.0	71.0	71.2	71.4	71.7	71.8	72.0	72.1	72.3	72.6	72.9	73.0	73.2	73.5
Lothian	70.3	70.4	70.5	70.6	70.9	71.1	71.5	71.6	71.8	71.9	71.9	72.3	72.6	72.8	72.9	73.1	73.4	73.7	74.0	74.4	74.7	75.2	75.3
Orkney	70.5	71.5	70.5	70.2	70.0	70.3	70.2	69.9	70.8	72.2	73.1	73.0	73.3	73.3	73.4	73.4	73.4	74.0	74.4	75.4	75.9	76.5	76.3
Shetland	71.8	71.4	71.4	71.2	70.1	70.6	71.7	72.4	72.5	72.3	72.1	71.3	71.1	71.6	72.1	72.1	72.9	74.2	74.9	75.0	73.6	74.2	75.3
Tayside	70.7	70.7	70.9	71.0	71.1	71.1	71.2	71.3	71.7	72.0	72.3	72.4	72.5	72.7	73.1	73.5	73.7	73.8	73.9	74.2	74.4	74.8	75.0
Western Isles	68.1	67.9	68.8	69.0	70.0	69.5	69.5	69.6	70.2	70.6	70.6	71.3	71.3	71.0	70.4	70.4	70.9	71.7	72.3	72.3	71.6	72.2	72.1

Source: 1991-93 to 2001-03 figures provided by the Office for National Statistics.

Table 7 Life expectancy at birth¹ in Scotland 1981-83 to 2003-05 by administrative area (Females)

	1981-83 Years	1982-84 Years	1983-85 Years	1984-86 Years	1985-87 Years	1986-88 Years	1987-89 Years	1988-90 Years	1989-91 Years	1990-92 Years	1991-93 Years	1992-94 Years	1993-95 Years	1994-96 Years	1995-97 Years	1996-98 Years	1997-99 Years	1998-2000 Years	1999-2001 Years	2000-02 Years	2001-03 Years	2002-04 Years	2003-05 Years
Scotland	75.5	75.6	75.8	76.0	76.3	76.6	76.5	76.6	76.8	77.2	77.2	77.3	77.5	77.8	77.9	78.1	78.2	78.4	78.6	78.8	78.9	79.0	79.2
Council																							
Aberdeen City	76.1	75.9	76.1	76.4	76.8	77.3	77.2	77.3	77.6	78.4	78.1	78.0	78.0	78.7	78.9	79.3	79.3	79.1	79.3	79.6	80.0	79.9	79.9
Aberdeenshire	77.2	77.2	77.1	77.2	77.4	78.0	78.2	78.6	78.6	78.7	78.5	78.6	79.0	79.8	80.2	80.3	80.0	80.2	80.4	80.7	80.8	80.8	81.0
Angus	77.6	77.7	77.5	77.6	76.9	77.2	77.3	77.5	77.7	77.6	77.7	77.8	78.1	78.5	78.8	79.1	78.7	78.7	78.9	79.8	79.9	79.4	79.4
Argyll & Bute	75.7	75.8	76.4	76.4	76.7	76.6	76.6	76.5	76.8	77.7	77.7	78.0	78.0	78.4	78.5	78.2	78.8	78.6	79.2	79.0	79.6	80.0	80.7
Clackmannanshire	75.2	75.3	75.3	75.1	75.1	75.9	75.9	76.5	77.0	77.8	77.7	77.5	77.4	77.4	77.7	78.1	79.0	78.5	78.3	78.1	78.6	79.2	78.7
Dumfries & Galloway	76.4	76.5	76.1	76.3	76.4	76.8	76.8	77.2	77.2	77.4	77.2	77.5	78.1	78.7	79.1	79.1	79.1	79.2	79.6	79.9	79.7	79.6	79.8
Dundee City	76.0	75.6	75.9	75.8	75.7	75.9	75.0	75.4	75.9	77.1	76.8	77.2	77.6	77.8	77.4	77.2	77.7	77.9	78.0	77.9	77.8	78.4	78.4
East Ayrshire	74.4	75.0	75.2	75.4	75.3	76.1	76.0	76.2	75.9	76.6	76.7	77.0	77.3	77.5	77.4	77.3	76.8	76.9	76.7	77.5	78.0	78.4	78.0
East Dunbartonshire	76.5	76.5	76.8	77.3	78.3	78.4	78.3	78.3	78.5	78.9	78.8	78.7	78.8	79.0	79.1	79.5	79.5	80.1	80.3	80.5	80.5	80.4	81.2
East Lothian	76.9	77.7	77.8	77.2	77.2	77.5	78.1	78.5	78.6	78.8	78.9	78.8	78.6	78.6	78.7	79.0	79.4	79.4	79.8	79.9	80.1	80.1	80.1
East Renfrewshire	77.5	77.1	77.2	77.5	78.2	78.5	78.1	78.1	78.4	79.1	79.3	79.6	79.5	79.6	79.7	80.2	80.7	80.7	81.1	81.3	81.1	80.6	81.0
Edinburgh, City of	76.5	76.8	76.8	76.9	77.1	77.4	77.4	77.3	77.3	77.7	77.9	78.1	78.4	78.5	78.7	78.7	78.9	79.0	79.3	79.7	80.1	80.4	80.6
Eilean Siar	77.0	77.3	77.5	77.9	77.8	77.5	78.4	78.1	78.5	79.1	78.8	78.5	78.2	78.7	78.7	78.9	79.5	80.3	80.1	79.9	79.6	79.9	79.5
Falkirk	75.3	75.4	75.7	75.9	76.3	76.5	76.4	76.3	76.6	77.1	77.1	76.8	77.1	77.6	78.3	78.5	78.3	78.4	78.3	78.6	78.6	78.8	79.1
Fife	76.0	76.2	76.5	76.7	76.9	76.9	76.7	76.7	76.8	77.3	77.5	78.0	78.3	78.6	78.9	78.9	79.1	79.3	79.6	79.5	79.4	79.6	79.7
Glasgow City	73.8	74.0	74.4	74.5	74.6	74.7	74.7	74.9	75.0	75.1	75.0	75.0	75.2	75.4	75.4	75.5	75.5	75.8	76.2	76.4	76.4	76.4	76.7
Highland	75.8	76.0	75.9	76.3	76.5	77.0	77.0	77.1	77.5	78.0	78.4	78.8	78.4	78.7	78.6	79.1	79.1	79.3	79.4	79.2	79.4	79.8	80.3
Inverclyde	74.2	74.9	75.7	75.7	76.1	75.8	76.3	75.7	75.7	75.8	75.5	76.0	75.8	76.4	76.7	77.2	77.7	77.3	77.2	77.2	77.8	78.1	77.9
Midlothian	76.1	75.9	75.7	75.7	75.9	76.1	76.5	76.7	77.0	77.4	77.4	78.0	77.3	77.4	77.5	78.1	78.6	78.9	78.9	78.6	78.6	79.1	79.5
Moray	76.7	77.0	76.6	76.9	76.9	77.0	76.8	76.8	77.8	78.4	78.7	78.4	78.3	78.8	79.4	79.9	79.4	79.3	79.3	79.9	80.1	80.1	80.1
North Ayrshire	74.8	74.9	75.0	75.1	75.2	75.7	75.5	75.9	76.0	76.6	76.5	76.9	76.9	77.8	77.8	78.2	77.8	78.1	77.7	78.3	78.5	79.1	78.9
North Lanarkshire	74.2	74.3	74.6	75.0	75.3	76.0	75.9	75.9	75.6	75.9	75.9	76.3	76.1	76.3	76.2	76.6	77.0	77.4	77.5	77.6	77.4	77.4	77.6
Orkney Islands	76.3	77.3	78.5	78.4	78.4	77.4	77.7	77.3	78.4	78.3	78.1	78.2	79.2	79.8	79.3	78.9	79.5	81.5	81.8	81.7	81.0	80.5	81.4
Perth & Kinross	76.6	76.5	77.1	77.4	77.5	77.7	77.7	78.0	78.2	78.2	78.0	77.7	78.0	78.6	79.0	79.2	79.5	80.2	80.7	80.7	80.0	80.2	80.6
Renfrewshire	74.7	74.7	74.9	74.9	75.3	75.6	75.8	76.0	76.4	76.8	76.9	76.9	77.1	77.2	77.4	77.3	77.5	77.6	77.7	78.2	78.1	78.2	78.2
Scottish Borders	75.8	76.3	76.2	77.0	77.3	77.9	77.9	77.6	77.8	78.1	78.6	79.0	78.9	79.2	79.3	79.5	79.6	79.9	80.1	80.3	79.8	79.8	80.0
Shetland Islands	76.5	76.6	76.8	77.1	78.2	78.1	78.6	78.4	79.0	79.0	78.5	77.7	78.5	79.2	80.1	79.5	79.8	80.8	81.2	81.4	80.6	80.3	81.0
South Ayrshire	75.0	75.1	75.5	76.0	76.6	77.0	77.5	77.5	77.5	77.5	77.5	77.9	77.9	78.3	78.3	78.8	78.7	78.6	78.7	78.9	79.3	79.7	80.1
South Lanarkshire	75.5	75.6	75.7	76.1	76.4	76.9	76.4	76.4	76.4	77.0	76.8	76.9	77.0	77.4	77.4	77.7	77.7	77.9	78.0	78.4	78.5	78.7	79.1
Stirling	76.1	76.5	76.4	76.1	76.3	76.9	77.2	77.4	77.6	77.7	77.8	78.1	78.6	78.2	78.4	78.5	79.2	79.6	79.4	79.6	79.3	79.9	80.1
West Dunbartonshire	74.8	75.2	75.4	75.7	76.1	76.5	76.2	76.6	76.6	77.4	77.1	77.2	76.5	76.4	76.4	76.7	76.7	76.9	77.2	77.5	77.4	77.6	77.5
West Lothian	74.7	74.9	75.6	75.6	76.2	76.0	76.1	76.3	76.5	77.2	77.0	77.7	77.5	77.6	77.1	77.0	76.8	77.3	77.9	78.0	77.7	78.0	78.4
NHS Board																							
Argyll & Clyde	74.8	75.0	75.4	75.5	75.9	76.1	76.1	76.1	76.4	76.9	76.8	77.0	77.0	77.3	77.5	77.5	77.8	77.6	77.9	78.1	78.4	78.5	78.7
Greater Glasgow & Clyde p	74.6	74.8	75.2	75.3	75.7	75.9	76.0	75.9	76.2	76.7	76.6	76.7	76.7	76.9	77.2	77.3	77.6	77.4	77.5	77.8	78.0	78.1	78.1
Highland part ²	75.7	75.8	76.4	76.4	76.7	76.6	76.6	76.5	76.8	77.7	77.7	78.0	78.0	78.4	78.5	78.2	78.8	78.6	79.2	79.0	79.6	80.0	80.7
Greater Glasgow & Clyde ³	74.6	74.7	75.0	75.2	75.5	75.7	75.7	75.8	75.9	76.3	76.2	76.2	76.2	76.4	76.5	76.7	76.8	77.0	77.3	77.6	77.6	77.7	77.9
Highland ³	75.7	75.9	76.0	76.3	76.6	76.9	76.9	76.9	77.3	77.9	78.2	78.5	78.2	78.6	78.6	78.8	79.0	79.1	79.3	79.2	79.5	79.8	80.4
Ayrshire & Arran	74.7	75.0	75.2	75.5	75.6	76.3	76.3	76.5	76.5	76.9	76.9	77.3	77.4	77.9	77.8	78.1	77.8	77.9	77.7	78.2	78.6	79.1	79.0
Borders	75.8	76.3	76.2	77.0	77.3	77.9	77.9	77.6	77.8	78.1	78.6	79.0	78.9	79.2	79.3	79.5	79.6	79.9	80.1	80.3	79.8	79.8	80.0
Dumfries & Galloway	76.2	76.4	76.0	76.1	76.2	76.3	74.7	75.3	75.5	77.4	77.2	77.5	78.1	78.7	79.1	79.1	79.1	79.2	79.6	79.9	79.7	79.6	79.8
Fife	76.0	76.2	76.5	76.7	76.9	76.9	76.7	76.7	76.8	77.3	77.5	78.0	78.3	78.6	78.9	78.9	79.1	79.3	79.6	79.5	79.4	79.6	79.7
Forth Valley	75.5	75.7	75.8	75.9	76.1	76.5	76.6	76.7	77.0	77.4	77.4	77.3	77.6	77.8	78.3	78.4	78.7	78.7	78.6	78.8	78.8	79.2	79.3
Grampian	76.6	76.6	76.6	76.8	77.0	77.5	77.5	77.7	78.0	78.5	78.4	78.4	78.5	79.2	79.5	79.8	79.6	79.6	79.8	80.1	80.4	80.4	80.4
Greater Glasgow	74.5	74.7	75.0	75.2	75.4	75.6	75.5	75.7	75.8	76.1	76.0	76.0	76.1	76.2	76.2	76.4	76.6	76.9	77.2	77.5	77.5	77.5	77.8
Highland	75.8	76.0	75.9	76.3	76.5	77.0	77.0	77.1	77.5	78.0	78.4	78.8	78.4	78.7	78.6	79.1	79.1	79.3	79.4	79.2	79.4	79.8	80.3
Lanarkshire	74.7	74.8	75.0	75.4	75.7	76.3	76.1	76.1	75.9	76.3	76.2	76.6	76.6	76.9	76.9	77.2	77.4	77.7	77.9	78.1	78.0	78.0	78.3
Lothian	76.3	76.5	76.6	76.6	76.9	77.1	77.2	77.3	77.3	77.7	77.8	78.1	78.2	78.3	78.3	78.4	78.6	78.7	79.1	79.3	79.5	79.8	80.0
Orkney	76.3	77.3	78.5	78.4	78.4	77.4	77.7	77.3	78.4	78.3	78.1	78.2	79.2	79.8	79.3	78.9	79.5	81.5	81.8	81.7	81.0	80.5	81.4
Shetland	76.5	76.6	76.8	77.1	78.2	78.1	78.6	78.4	79.0	79.0	78.5	77.7	78.5	79.2	80.1	79.5	79.8	80.8	81.2	81.4	80.6	80.3	81.0
Tayside	76.6	76.5	76.8	76.8	76.7	77.0	77.2	77.5	77.7	77.6	77.4	77.5	77.8	78.2	78.3	78.4	78.6	78.9	79.2	79.4	79.2	79.4	79.5
Western Isles	77.0	77.3	77.5	77.3	77.8	77.5	78.4	78.1	78.5	79.1	78.8	78.5	78.2	78.7	78.7	78.9	79.5	80.3	80.1	79.9	79.6	79.9	79.5

Source: 1991-93 to 2001-03 figures provided by the Office for National Statistics.

¹ The results may vary from year to year, particularly those based on small populations.

Table 8 Life expectancy at birth¹ in Scotland 2003-05 by administrative area, and comparisons with 1981-83 (Males)

	2003-05 Years	1981-83 Years	2003-05 Rank	1981-83 Rank	Difference in years	% difference
Scotland	74.2	69.3	-	-	4.9	7.1
Council						
Aberdeen City	75.0	70.1	19	12	4.8	6.9
Aberdeenshire	76.7	71.6	3	4	5.1	7.1
Angus	75.7	71.7	9	3	4.0	5.6
Argyll & Bute	75.1	70.0	16	15	5.1	7.3
Clackmannanshire	73.2	69.7	25	20	3.5	5.1
Dumfries & Galloway	75.7	69.7	10	19	5.9	8.5
Dundee City	73.0	69.9	26	18	3.1	4.5
East Ayrshire	73.7	68.2	24	28	5.5	8.1
East Dunbartonshire	77.7	71.6	1	5	6.1	8.5
East Lothian	76.1	70.6	7	7	5.5	7.8
East Renfrewshire	76.8	72.0	2	1	4.8	6.6
Edinburgh, City of	75.5	70.3	12	10	5.1	7.3
Eilean Siar	72.1	68.1	29	29	3.9	5.8
Falkirk	74.4	69.1	20	23	5.3	7.7
Fife	75.4	70.1	13	13	5.3	7.6
Glasgow City	69.9	67.0	32	32	3.0	4.5
Highland	75.0	68.1	18	30	6.9	10.1
Inverclyde	71.1	67.5	30	31	3.6	5.3
Midlothian	75.2	70.0	15	14	5.1	7.3
Moray	75.6	70.2	11	11	5.3	7.6
North Ayrshire	73.8	68.7	23	25	5.1	7.5
North Lanarkshire	72.7	68.5	27	26	4.3	6.2
Orkney Islands	76.3	70.5	6	9	5.7	8.1
Perth & Kinross	76.4	70.6	4	6	5.8	8.3
Renfrewshire	72.6	68.4	28	27	4.2	6.2
Scottish Borders	75.8	70.6	8	8	5.2	7.4
Shetland Islands	75.3	71.8	14	2	3.6	5.0
South Ayrshire	75.0	69.9	17	17	5.2	7.4
South Lanarkshire	74.3	69.4	21	22	4.8	7.0
Stirling	76.3	69.9	5	16	6.4	9.2
West Dunbartonshire	71.0	68.9	31	24	2.0	2.9
West Lothian	74.3	69.6	22	21	4.6	6.7
NHS Board						
Argyll & Clyde	72.6	68.6	15	14	4.0	5.8
Greater Glasgow & Clyde part ²	71.9	68.3	18	15	3.6	5.3
Highland part ²	75.1	70.0	8	8	5.1	7.3
Greater Glasgow & Clyde ³	71.9	68.1	17	17	3.8	5.5
Highland ³	75.0	68.7	10	13	6.3	9.2
Ayrshire & Arran	74.2	68.9	13	11	5.3	7.7
Borders	75.8	70.6	3	4	5.2	7.4
Dumfries & Galloway	75.7	69.4	4	10	6.3	9.1
Fife	75.4	70.1	5	7	5.3	7.6
Forth Valley	74.8	69.4	12	9	5.3	7.7
Grampian	75.9	70.7	2	3	5.2	7.3
Greater Glasgow	71.9	68.1	19	19	3.8	5.6
Highland	75.0	68.1	11	18	6.9	10.1
Lanarkshire	73.5	68.8	14	12	4.7	6.8
Lothian	75.3	70.3	7	6	5.1	7.2
Orkney	76.3	70.5	1	5	5.7	8.1
Shetland	75.3	71.8	6	1	3.6	5.0
Tayside	75.0	70.7	9	2	4.3	6.1
Western Isles	72.1	68.1	16	16	3.9	5.8

¹ The results may vary from year to year, particularly those based on small populations.

² Areas of former Argyll & Clyde inherited by new Boards on 1st April 2006.

³ New Board areas including parts of former Argyll & Clyde.

Table 9 Life expectancy at birth¹ in Scotland 2003-05 by administrative area, and comparisons with 1981-83 (Females)

	2003-05 Years	1981-83 Years	2003-05 Rank	1981-83 Rank	Difference in years	% difference
Scotland	79.2	75.5	-	-	3.7	5.0
Council						
Aberdeen City	79.9	76.1	15	14	3.8	5.0
Aberdeenshire	81.0	77.2	4	3	3.8	4.9
Angus	79.4	77.6	20	1	1.8	2.3
Argyll & Bute	80.7	75.7	6	20	5.0	6.6
Clackmannanshire	78.7	75.2	24	23	3.5	4.6
Dumfries & Galloway	79.8	76.4	16	11	3.5	4.6
Dundee City	78.4	76.0	26	17	2.4	3.2
East Ayrshire	78.0	74.4	28	29	3.6	4.8
East Dunbartonshire	81.2	76.5	2	10	4.7	6.1
East Lothian	80.1	76.9	11	5	3.2	4.1
East Renfrewshire	81.0	77.5	3	2	3.5	4.6
Edinburgh, City of	80.6	76.5	8	9	4.1	5.4
Eilean Siar	79.5	77.0	18	4	2.5	3.3
Falkirk	79.1	75.3	21	22	3.8	5.1
Fife	79.7	76.0	17	16	3.7	4.9
Glasgow City	76.7	73.8	32	32	2.9	3.9
Highland	80.3	75.8	9	19	4.5	5.9
Inverclyde	77.9	74.2	29	31	3.7	5.0
Midlothian	79.5	76.1	19	15	3.4	4.5
Moray	80.1	76.7	12	6	3.4	4.4
North Ayrshire	78.9	74.8	23	26	4.1	5.5
North Lanarkshire	77.6	74.2	30	30	3.4	4.6
Orkney Islands	81.4	76.3	1	12	5.1	6.6
Perth & Kinross	80.6	76.6	7	7	4.0	5.2
Renfrewshire	78.2	74.7	27	27	3.4	4.6
Scottish Borders	80.0	75.8	14	18	4.1	5.5
Shetland Islands	81.0	76.5	5	8	4.5	5.9
South Ayrshire	80.1	75.0	13	24	5.1	6.8
South Lanarkshire	79.1	75.5	22	21	3.7	4.8
Stirling	80.1	76.1	10	13	4.0	5.3
West Dunbartonshire	77.5	74.8	31	25	2.7	3.6
West Lothian	78.4	74.7	25	28	3.8	5.0
NHS Board						
Argyll & Clyde	78.7	74.8	15	14	3.9	5.1
Greater Glasgow & Clyde part ²	78.1	74.6	17	17	3.5	4.7
Highland part ²	80.7	75.7	3	12	5.0	6.6
Greater Glasgow & Clyde ³	77.9	74.6	18	18	3.4	4.5
Highland ³	80.4	75.7	5	11	4.7	6.1
Ayrshire & Arran	79.0	74.7	14	15	4.2	5.7
Borders	80.0	75.8	8	9	4.1	5.5
Dumfries & Galloway	79.8	76.2	9	7	3.6	4.8
Fife	79.7	76.0	10	8	3.7	4.9
Forth Valley	79.3	75.5	13	13	3.8	5.1
Grampian	80.4	76.6	4	3	3.8	5.0
Greater Glasgow	77.8	74.5	19	19	3.3	4.4
Highland	80.3	75.8	6	10	4.5	5.9
Lanarkshire	78.3	74.7	16	16	3.7	4.9
Lothian	80.0	76.3	7	6	3.7	4.9
Orkney	81.4	76.3	1	5	5.1	6.6
Shetland	81.0	76.5	2	4	4.5	5.9
Tayside	79.5	76.6	12	2	2.9	3.7
Western Isles	79.5	77.0	11	1	2.5	3.3

¹ The results may vary from year to year, particularly those based on small populations.

² Areas of former Argyll & Clyde inherited by new Boards on 1st April 2006.

³ New Board areas including parts of former Argyll & Clyde.

7. Notes on Statistical Publications

ENQUIRIES ABOUT THIS PUBLICATION

Enquiries should be addressed to:

Statistics Customer Services, National Records of Scotland, Ladywell House, Edinburgh, EH12 7 TF

Telephone: (0131) 314 4243, Fax: (0131) 314 4696, E-mail: customer@gro-scotland.gsi.gov.uk

NATIONAL STATISTICS This is a National Statistics publication. It has been produced to high professional standards set out in the National Statistics Code of Practice and Release Practice Protocol (http://www.statistics.gov.uk/about_ns/cop/default.asp). These statistics undergo regular quality assurance reviews to ensure that they meet customer needs. They are produced free from any political interference.

THE NATIONAL RECORDS OF SCOTLAND (NRS) NRS is the department of the devolved Scottish Administration responsible for the registration of births, marriages, civil partnerships, deaths, divorces and adoptions in Scotland. We are responsible for the Census of Population in Scotland which we use, with other sources of information, to produce population and household statistics. We make available important information for family history. Our website is www.nrscotland.gov.uk.

OTHER NRS STATISTICS Further detailed statistics produced by NRS are available from the statistics pages of the NRS website (www.nrscotland.gov.uk/statistics-and-data/statistics). Statistics from the 2001 Census are on the Scotland's Census Results On-Line web site (www.scrol.gov.uk) and on the Census section of the main website (www.nrscotland.gov.uk/statistics-and-data/census).

Information about future publications is provided on the NRS website (www.nrscotland.gov.uk/statistics-and-data/future-publications). If you would like to receive notification of forthcoming statistical publications, you can register your interest on the Scottish Executive ScotStat web site at www.scotland.gov.uk/Topics/Statistics/scotstat/Intro.

COMPLAINTS AND SUGGESTIONS If you are not satisfied with our service, please write to Kirsty MacLachlan, Head of Demography Division, Room 1/2/7, Ladywell House, Ladywell Road, Edinburgh, EH12 7TF, Telephone: (0131) 314 4242, E-mail: kirsty.maclachlan@gro-scotland.gsi.gov.uk.

We also welcome any comments or suggestions that would help us to improve our standards of service.

RELATED ORGANISATIONS

ORGANISATION	CONTACT
SCOTTISH EXECUTIVE (SE): The SE forms the bulk of the devolved Scottish Administration. The aim of the statistical service in the SE is to provide relevant and reliable statistical information, analysis and advice that meets the needs of government, business and the people of Scotland	<i>Ryan Stewart, Office of the Chief Statistician, Scottish Executive, 3rd Floor West Rear, St Andrews House, Edinburgh, EH1 3DG</i> Telephone: (0131) 244 0442 Fax: (0131) 244 0335 E-mail: statistics.enquiries@scotland.gsi.gov.uk Website: http://www.scotland.gov.uk/Topics/Statistics
The OFFICE FOR NATIONAL STATISTICS (ONS) is responsible for producing a wide range of economic and social statistics. It also, for England and Wales, registers life events and holds the Census of Population.	<i>Customer Contact Centre, Room 1.015, Office for National Statistics, Cardiff Road, Newport, NP10 8XG</i> Telephone: 0845 601 3034 Minicom: 01633 812399 Fax: 01633 652747 E-mail: info@statistics.gsi.gov.uk Website: www.statistics.gov.uk
The NORTHERN IRELAND STATISTICS AND RESEARCH AGENCY (NISRA) is Northern Ireland's official statistics organisation. The Agency also has responsibility, in Northern Ireland, for the registration of births, marriages, adoptions and deaths and the Census of Population.	<i>Northern Ireland Statistics and Research Agency, McAuley House, 2-14 Castle Street, Belfast, BT1 1SA</i> Telephone 028 9034 8100 Fax 028 9034 8106 Website: www.nisra.gov.uk

© Crown Copyright. Brief extracts from the Crown Copyright material in National Records of Scotland publications may be reproduced provided the source is fully acknowledged.