

Figure 4 Life expectancy at birth, with 95% lower and upper confidence limits, 1996-1998 to 2006-2008 for males and females in:

Scotland

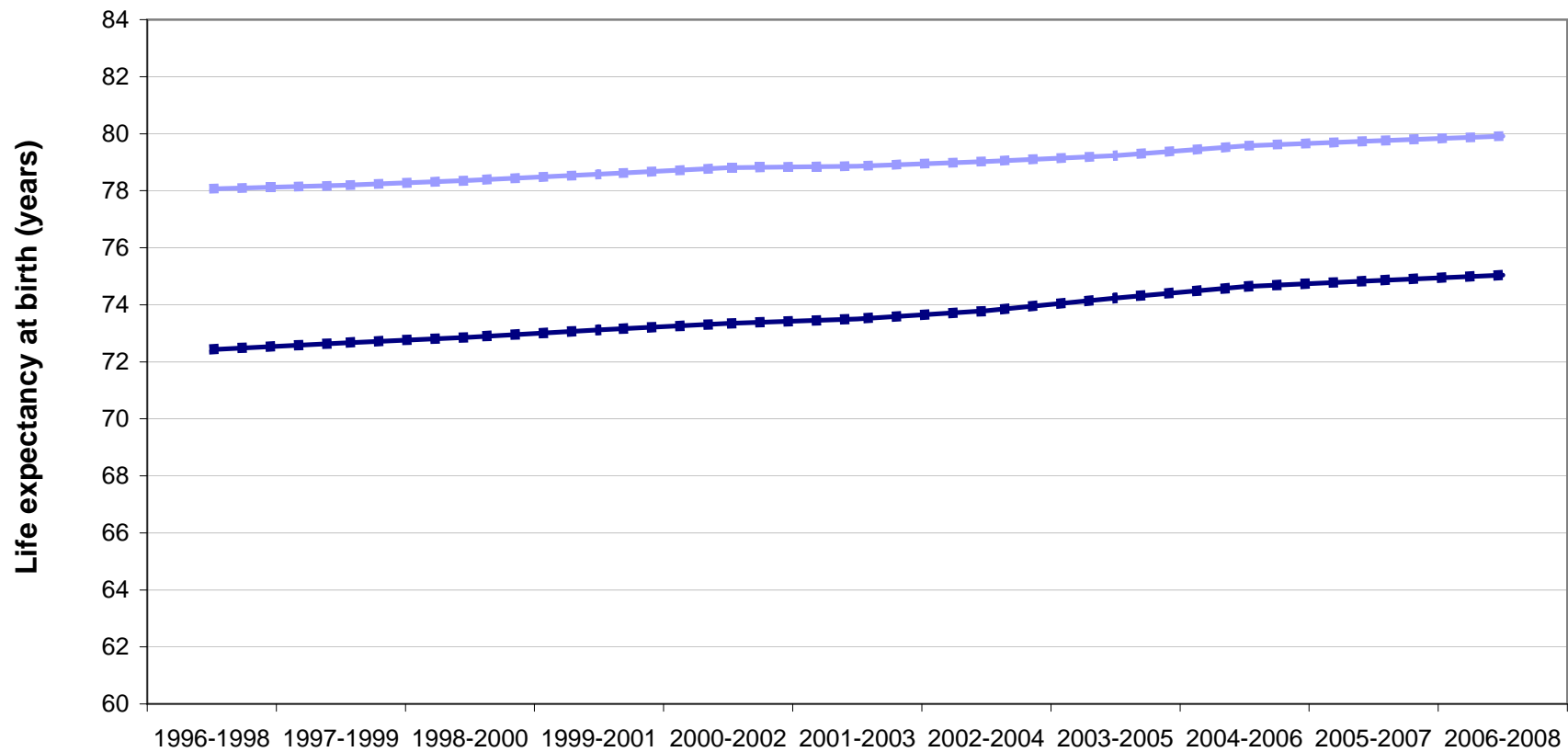
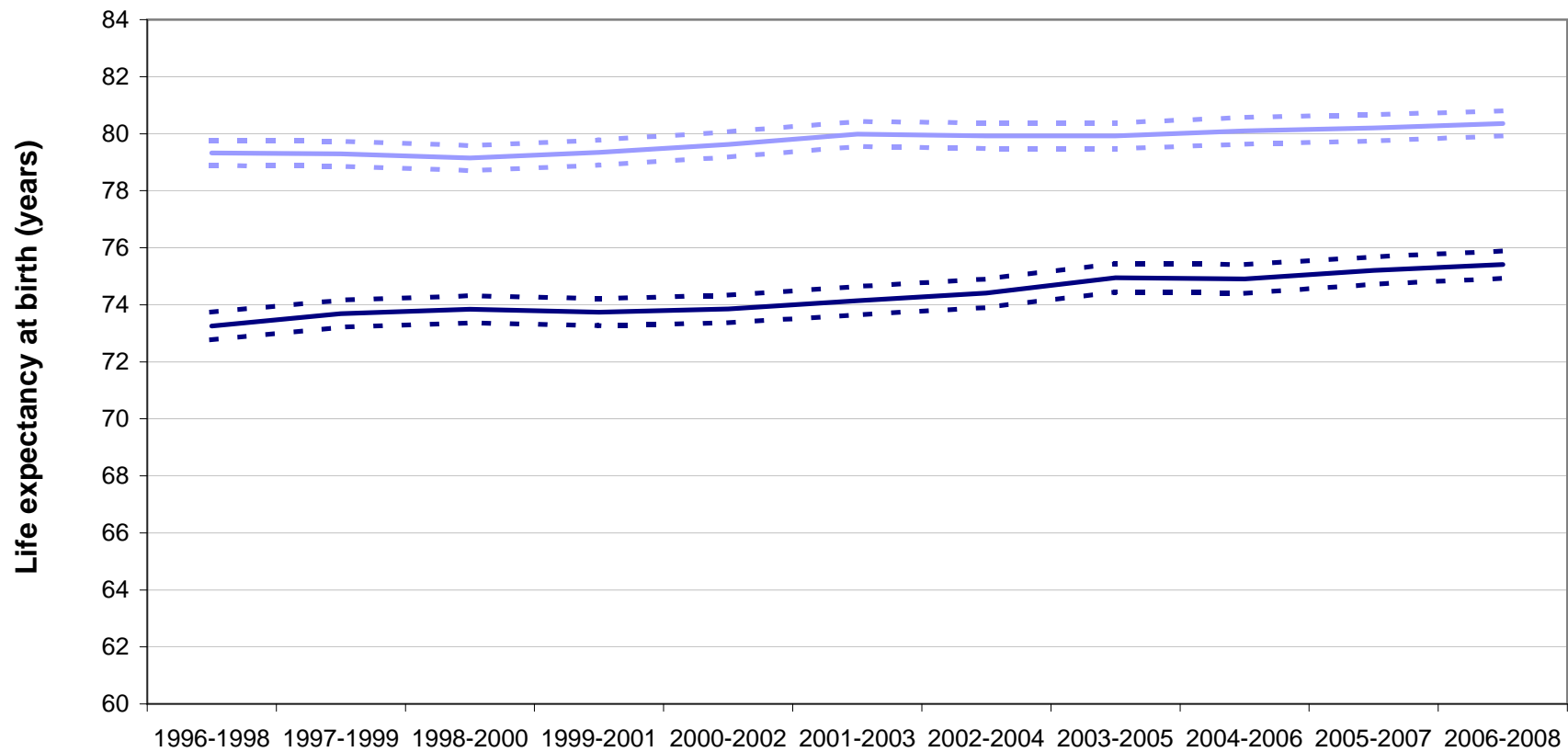


Figure 4 Life expectancy at birth, with 95% lower and upper confidence limits, 1996-1998 to 2006-2008 for males and females in:

Aberdeen City Community Health



time period

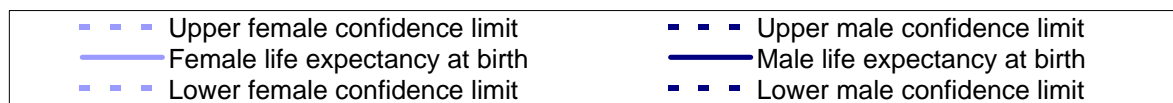


Figure 4 Life expectancy at birth, with 95% lower and upper confidence limits, 1996-1998 to 2006-2008 for males and females in:

Aberdeenshire Community Health

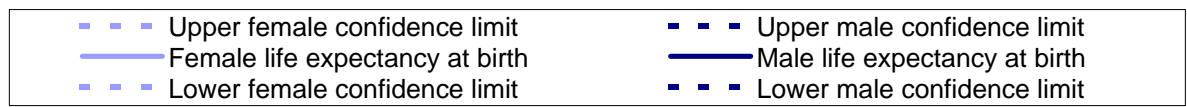
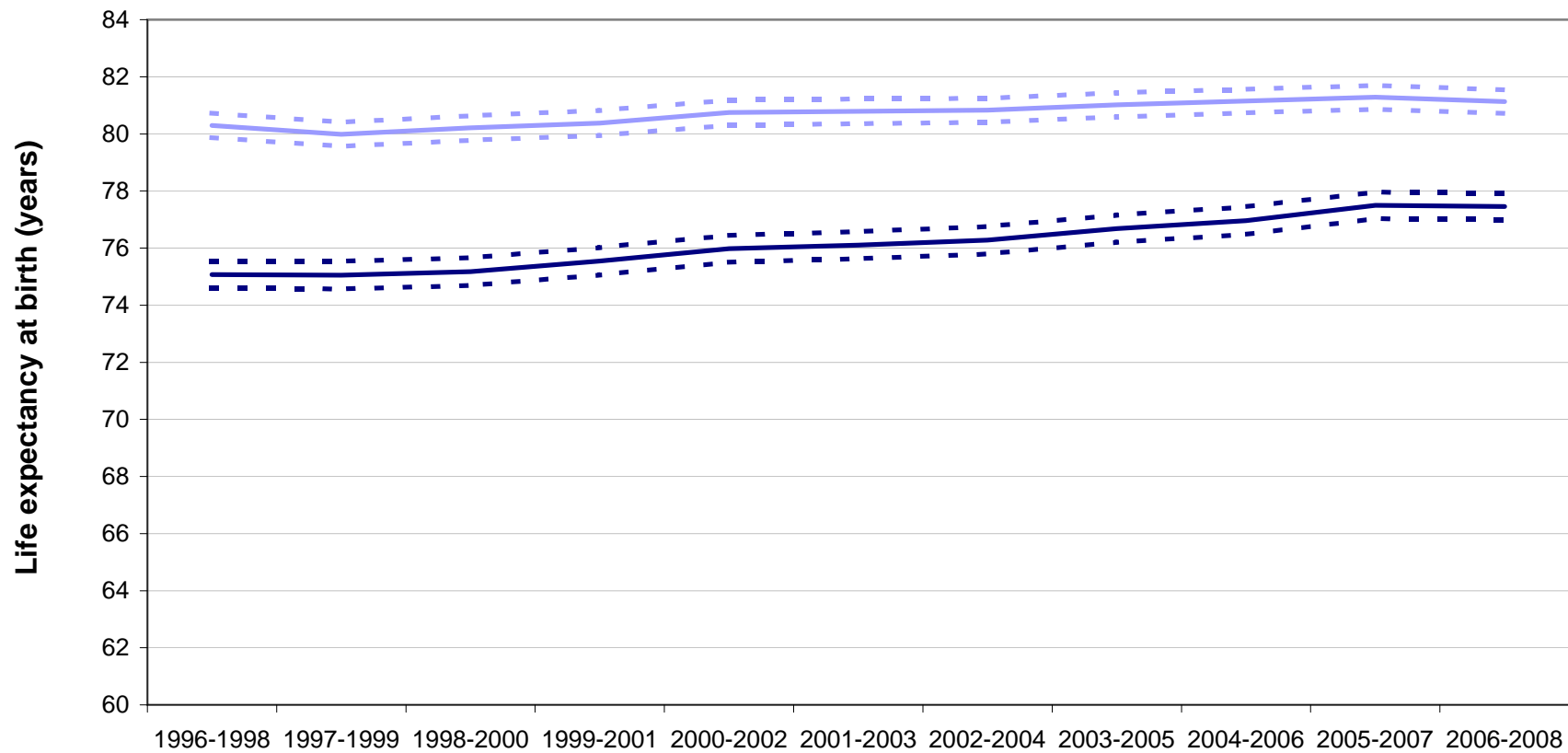


Figure 4 Life expectancy at birth, with 95% lower and upper confidence limits, 1996-1998 to 2006-2008 for males and females in:

Angus Community Health Partnership

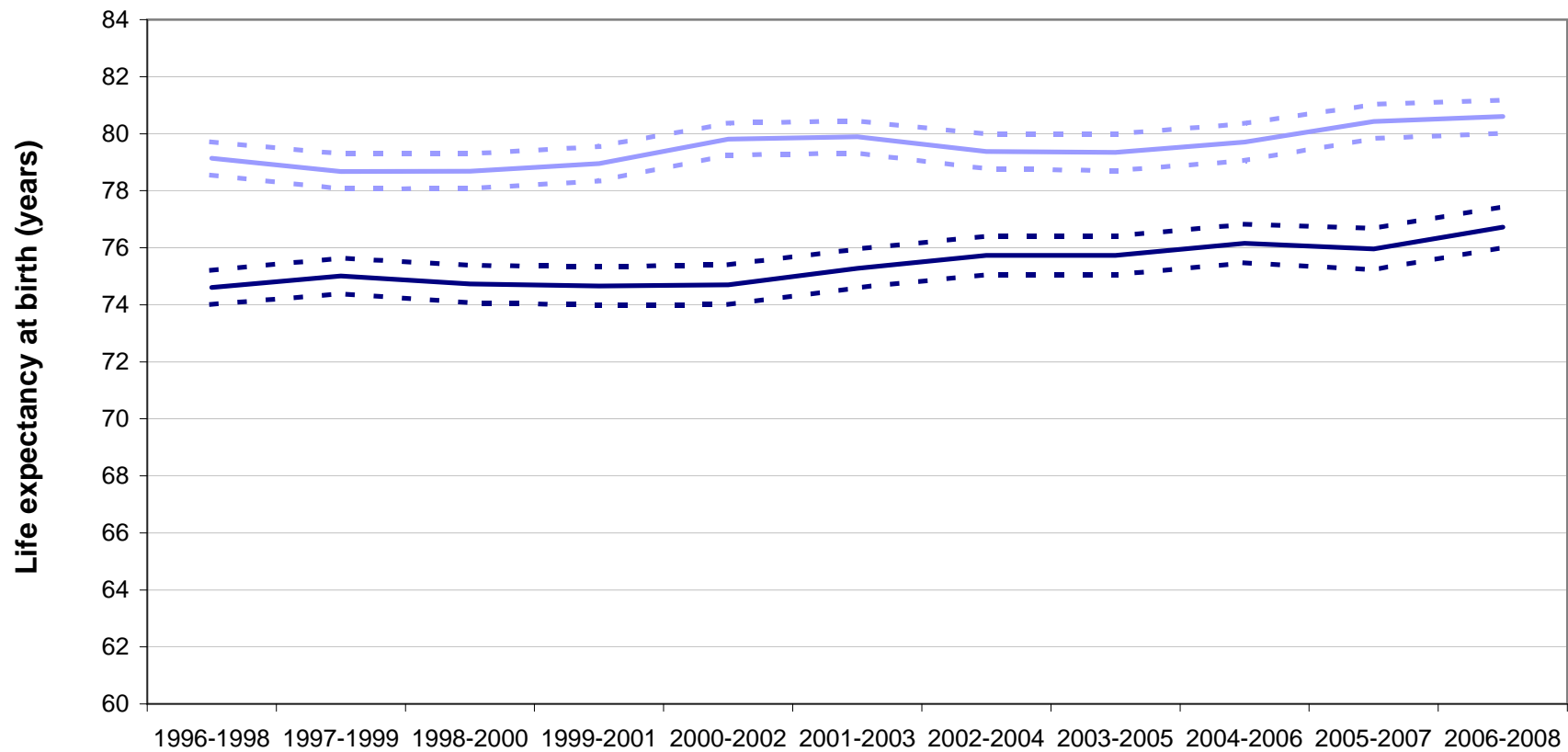
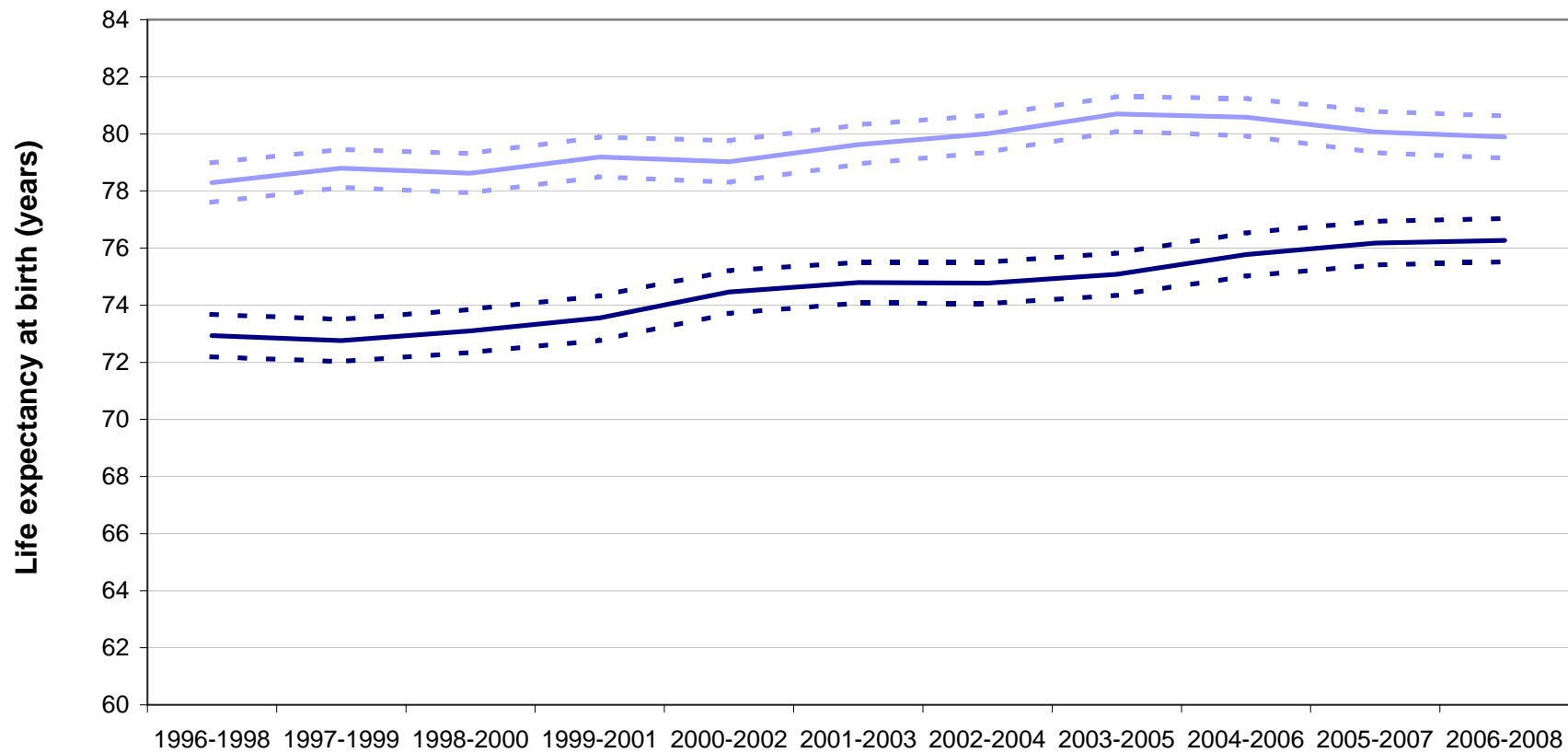


Figure 4 Life expectancy at birth, with 95% lower and upper confidence limits, 1996-1998 to 2006-2008 for males and females in:

Argyll & Bute Community Health



time period



Figure 4 Life expectancy at birth, with 95% lower and upper confidence limits, 1996-1998 to 2006-2008 for males and females in:

Clackmannanshire Community Health

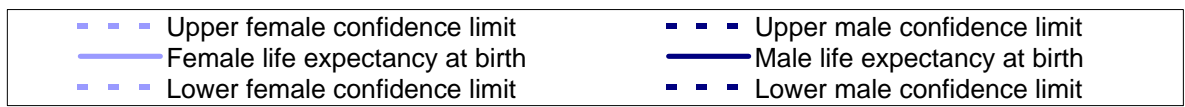
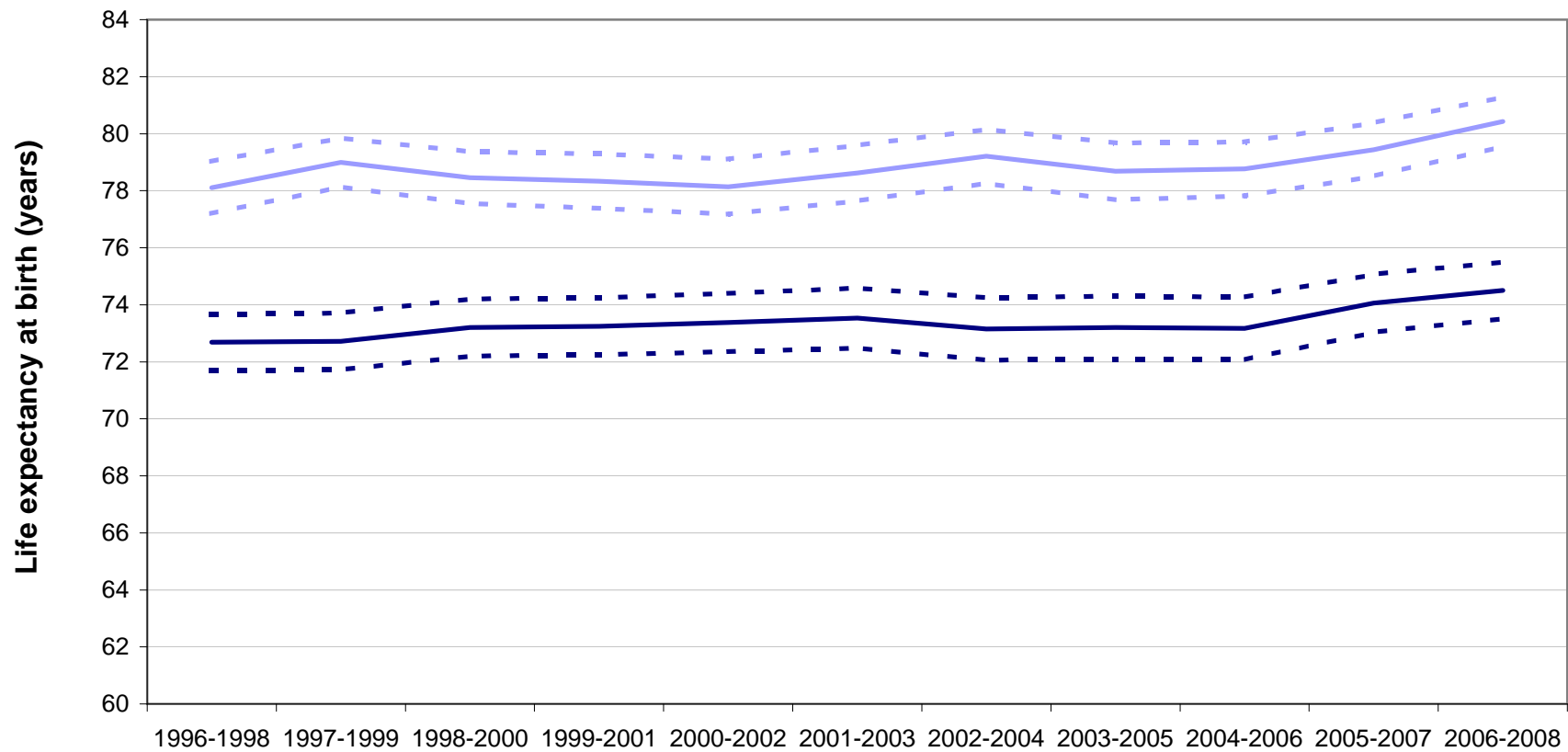
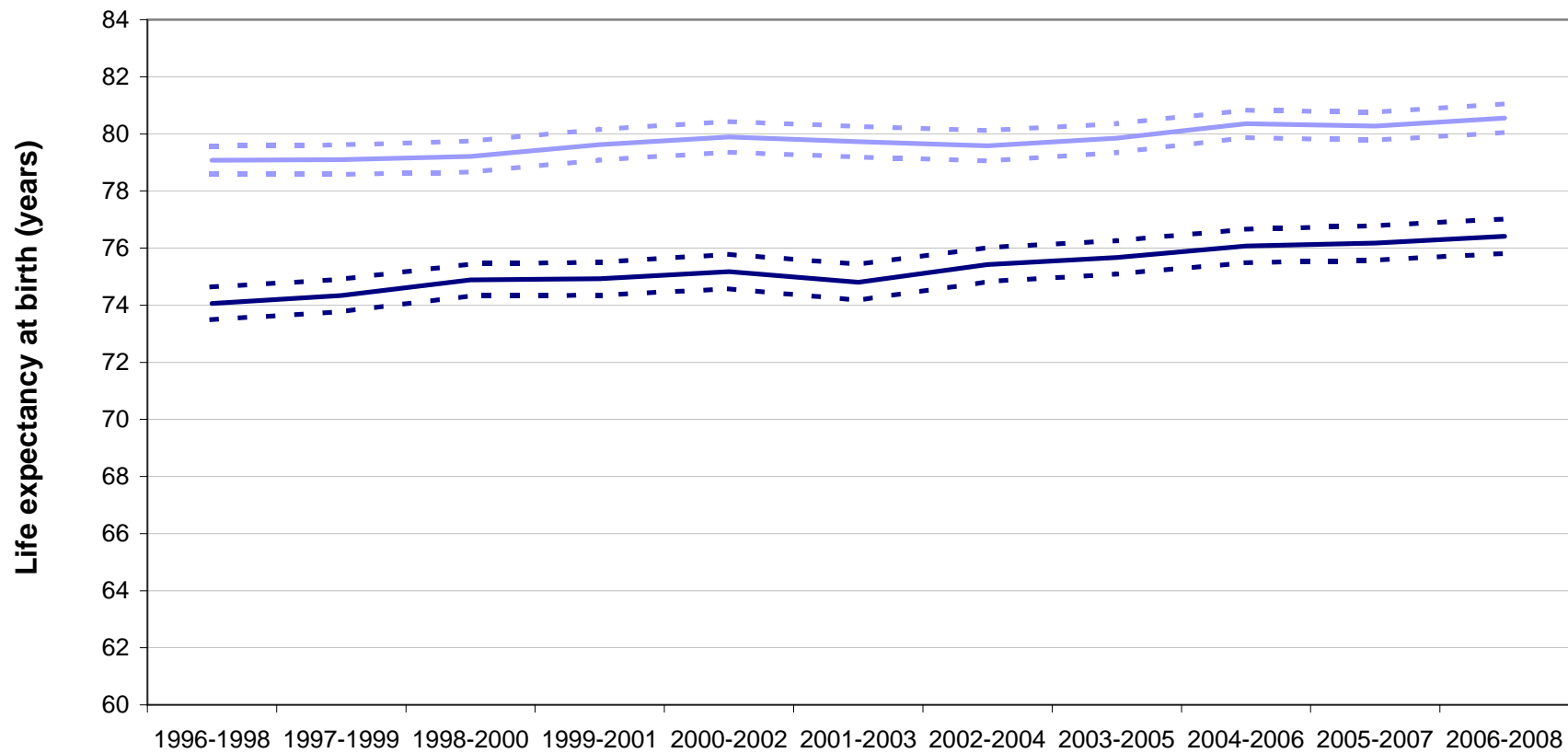


Figure 4 Life expectancy at birth, with 95% lower and upper confidence limits, 1996-1998 to 2006-2008 for males and females in:

Dumfries & Galloway Community Health



time period



Figure 4 Life expectancy at birth, with 95% lower and upper confidence limits, 1996-1998 to 2006-2008 for males and females in:

Dundee City Community Health

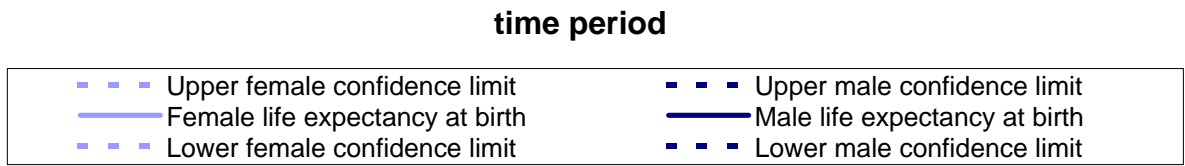
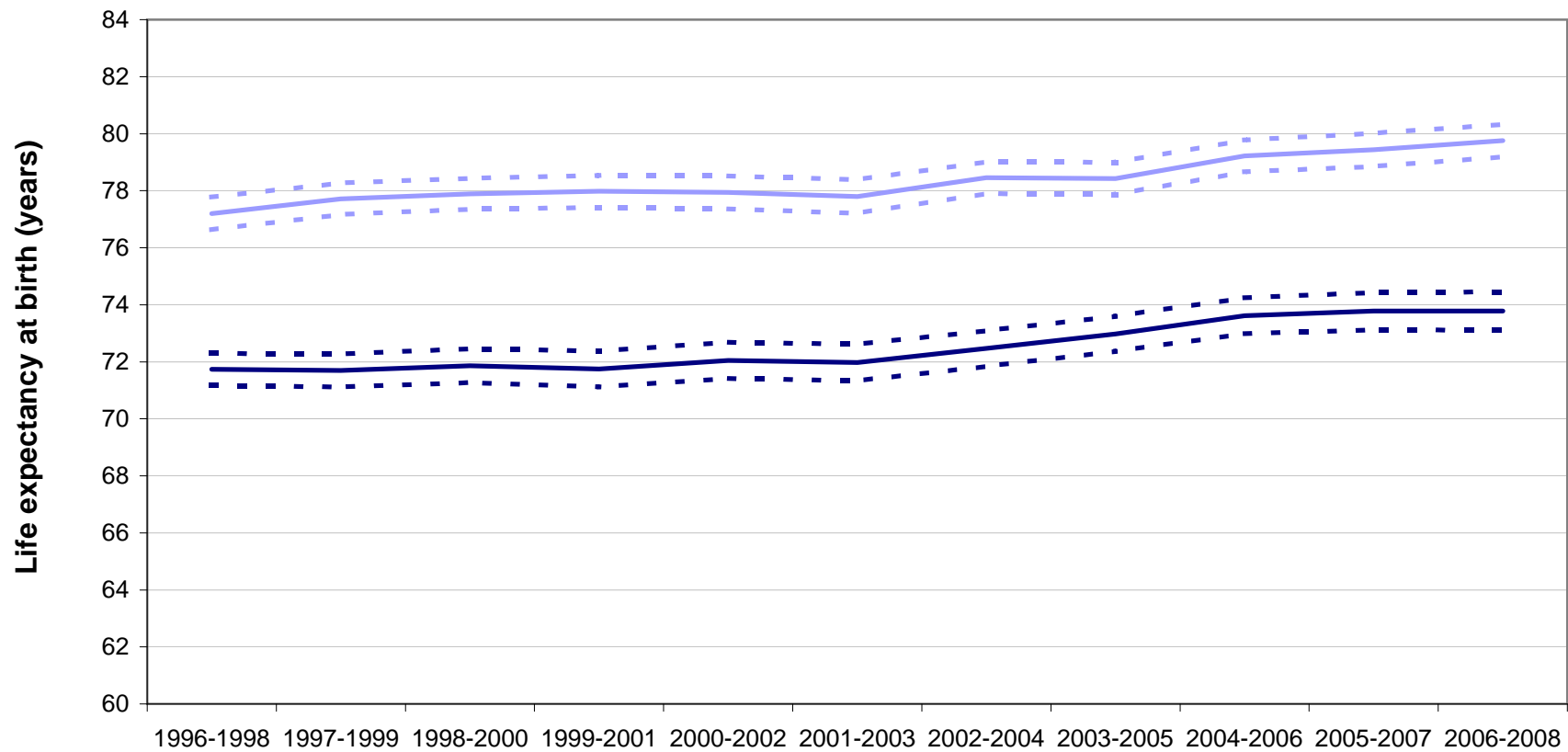
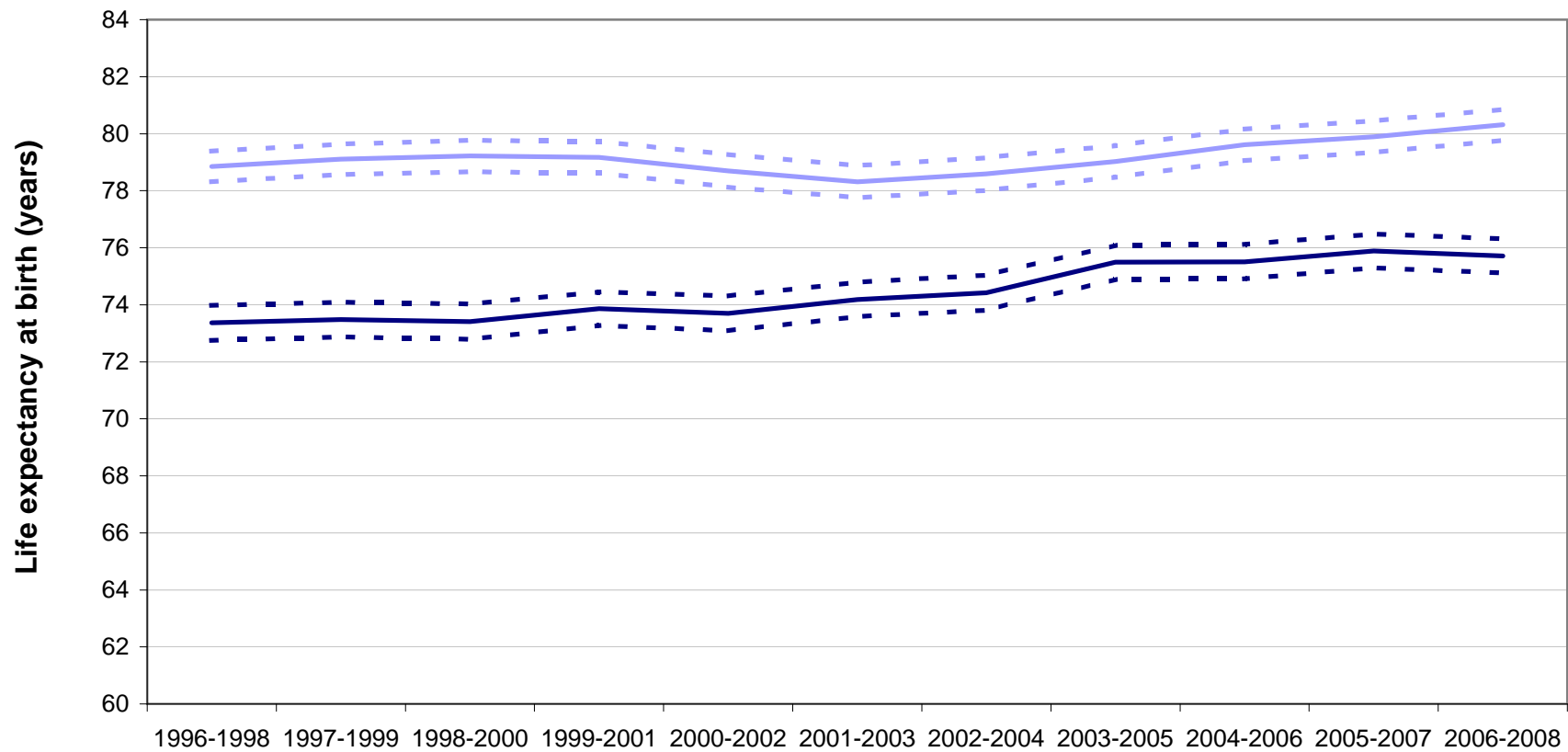


Figure 4 Life expectancy at birth, with 95% lower and upper confidence limits, 1996-1998 to 2006-2008 for males and females in:

Dunfermline & West Fife Community

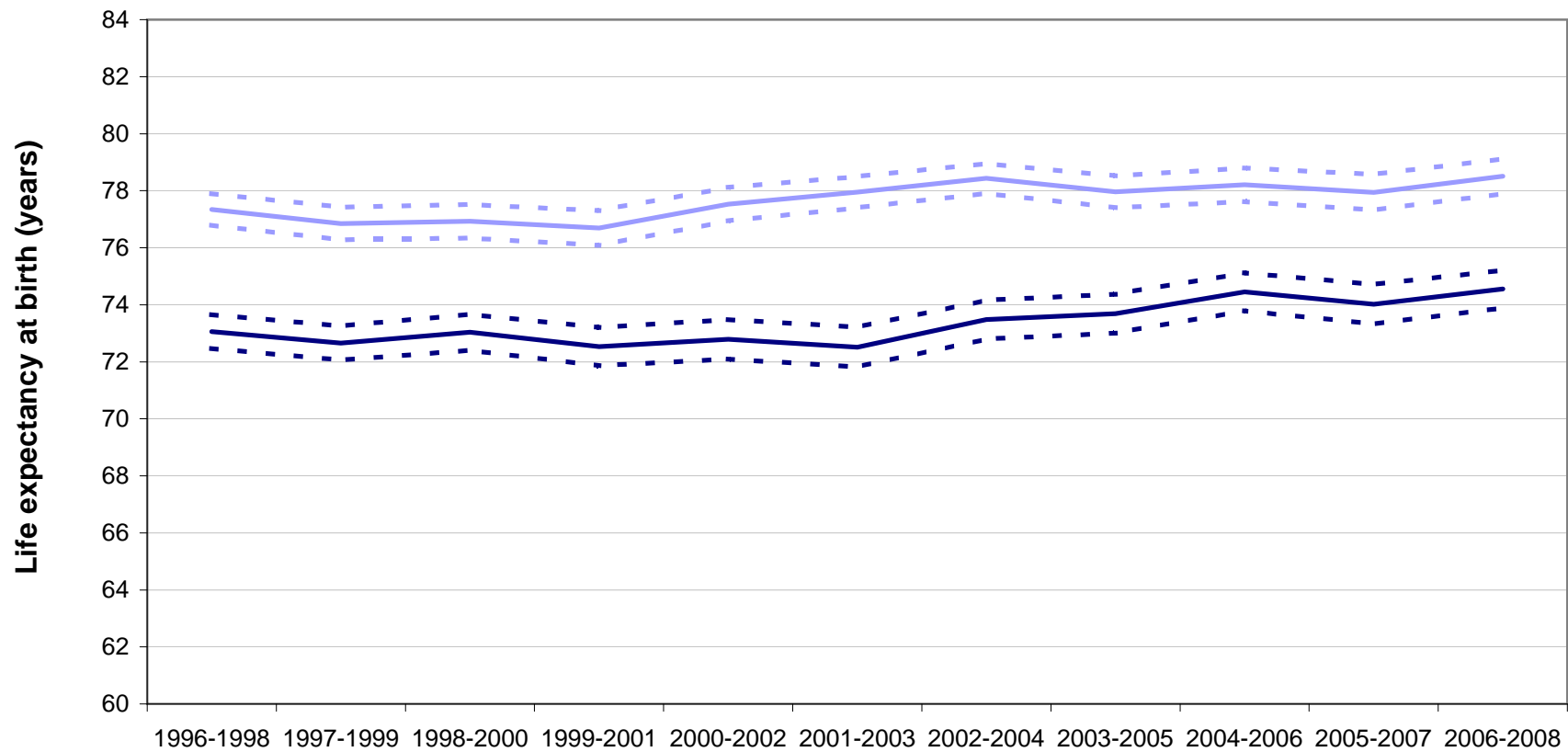


time period



Figure 4 Life expectancy at birth, with 95% lower and upper confidence limits, 1996-1998 to 2006-2008 for males and females in:

East Ayrshire Community Health



time period



Figure 4 Life expectancy at birth, with 95% lower and upper confidence limits, 1996-1998 to 2006-2008 for males and females in:

East Dunbartonshire Community Health

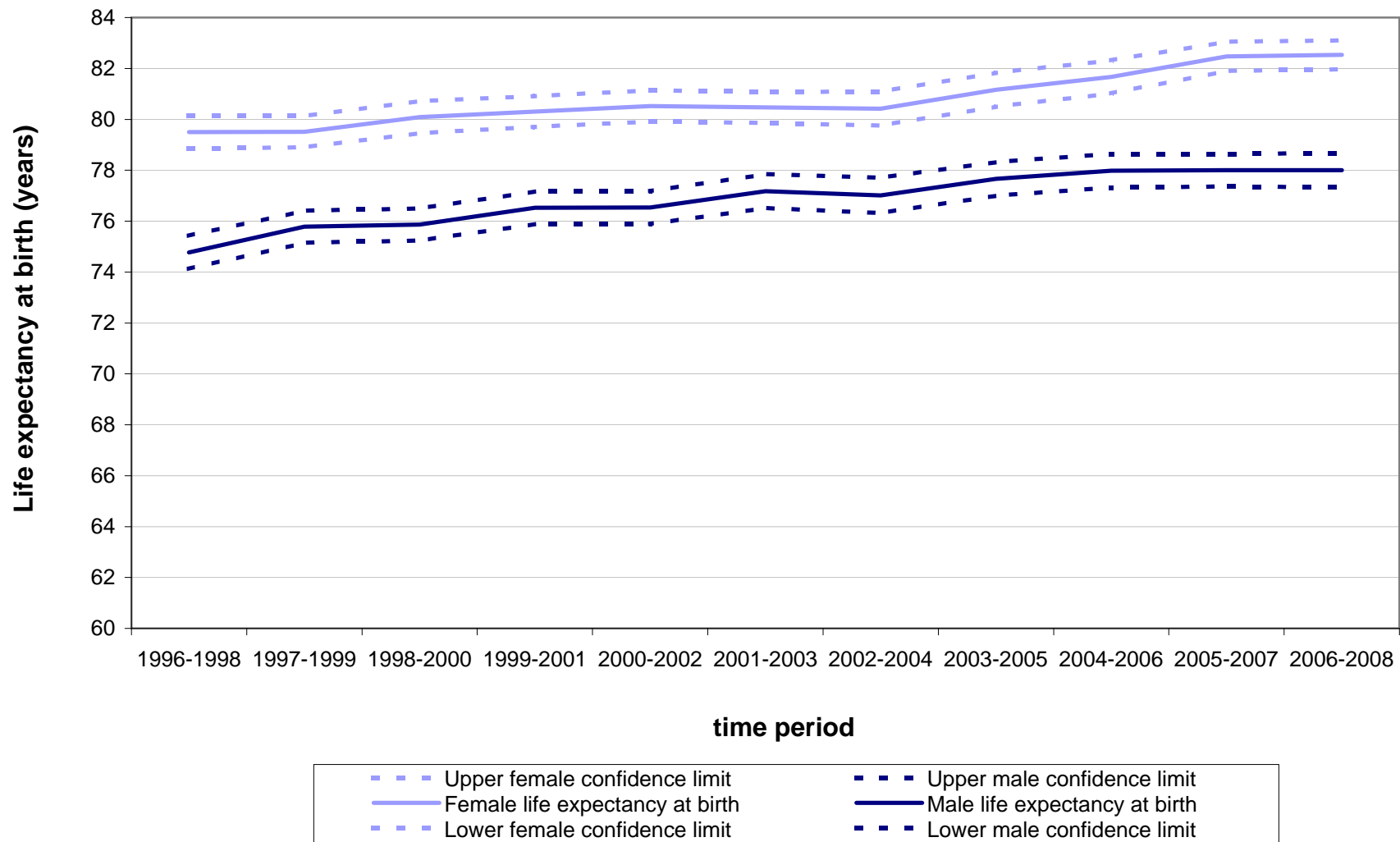


Figure 4 Life expectancy at birth, with 95% lower and upper confidence limits, 1996-1998 to 2006-2008 for males and females in:

East Glasgow Community Health & Care

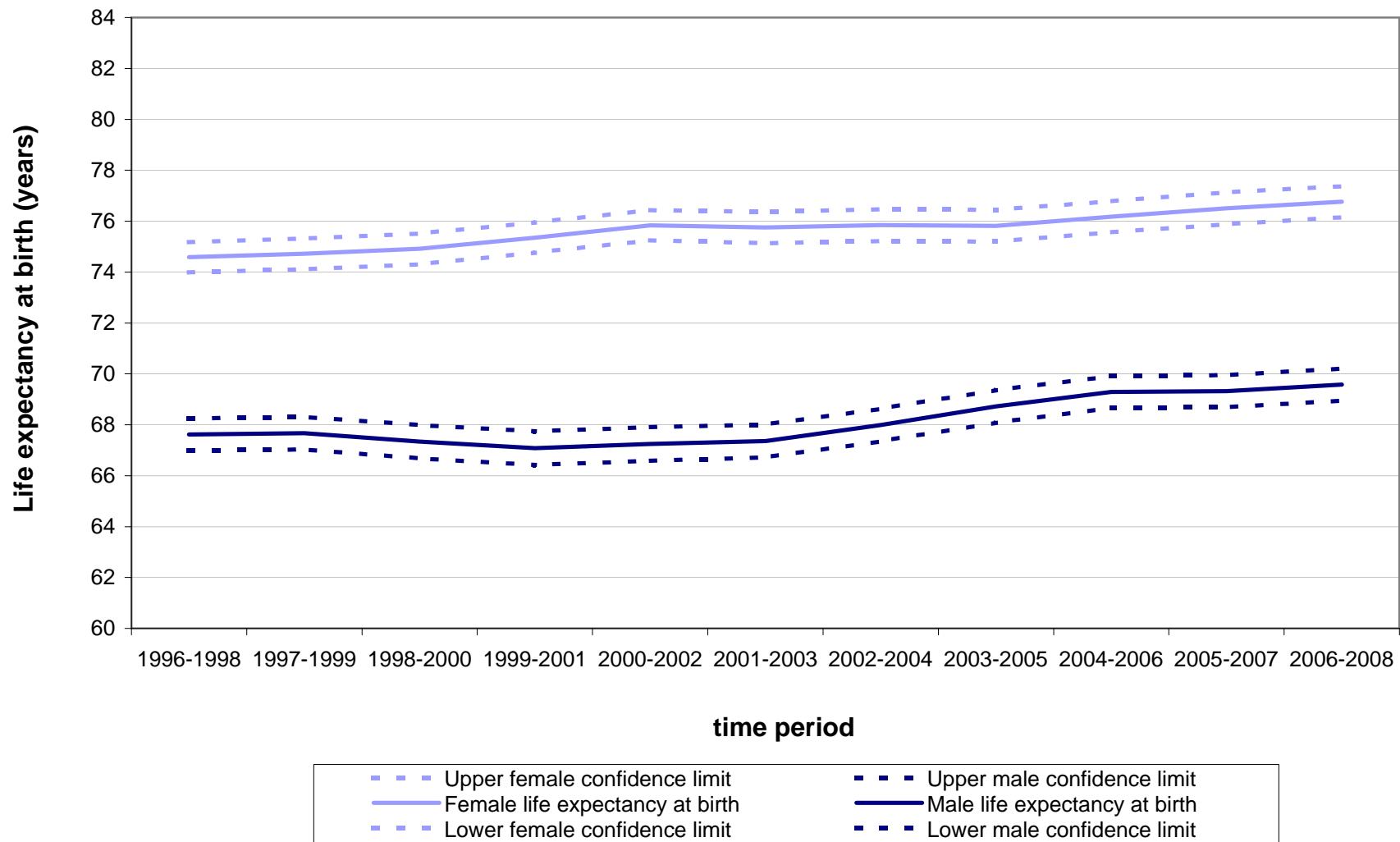


Figure 4 Life expectancy at birth, with 95% lower and upper confidence limits, 1996-1998 to 2006-2008 for males and females in:

East Lothian Community Health

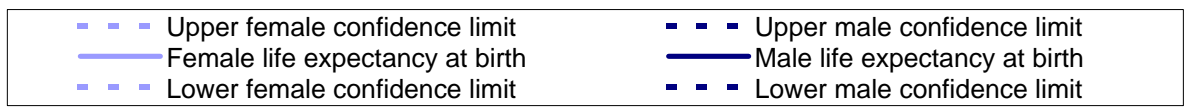
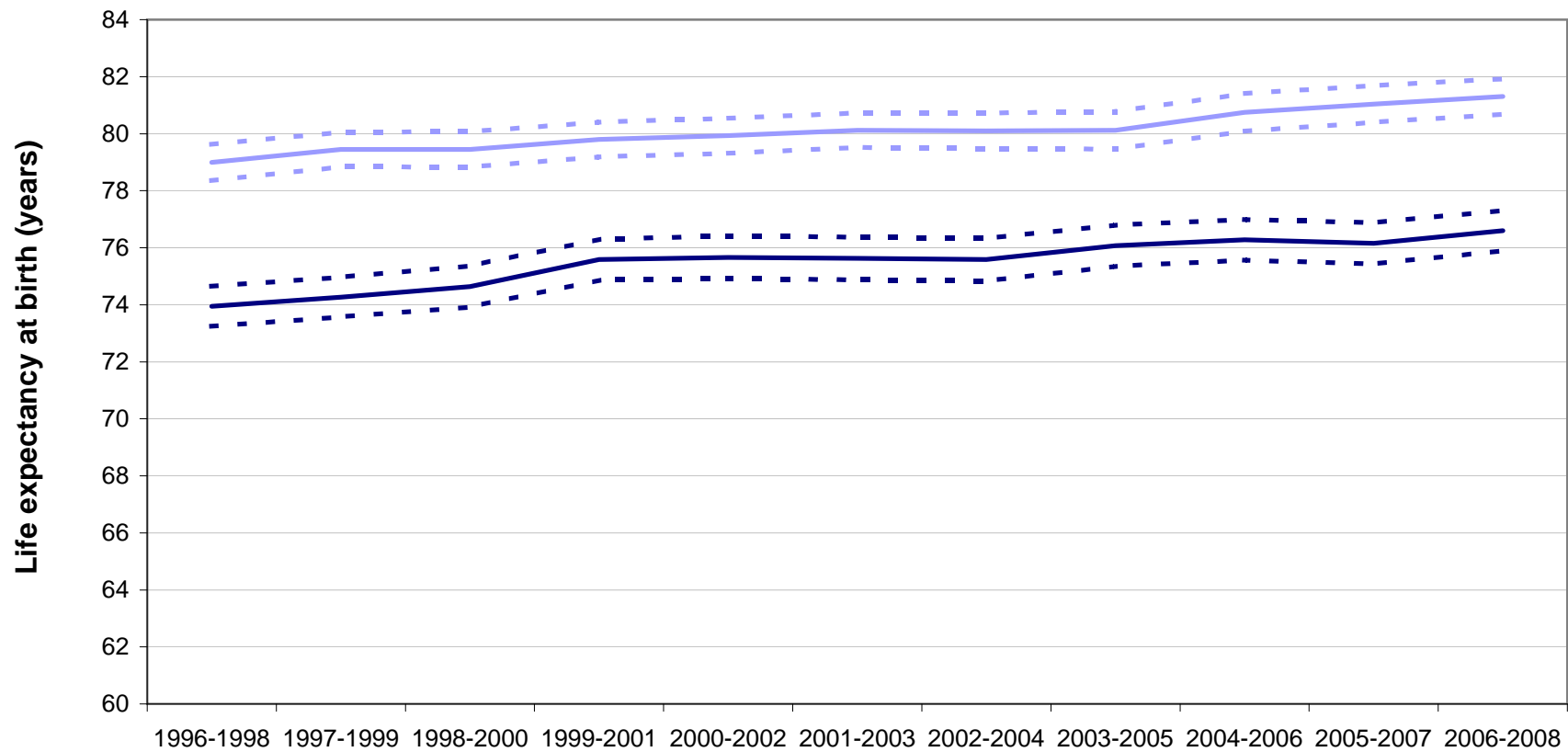
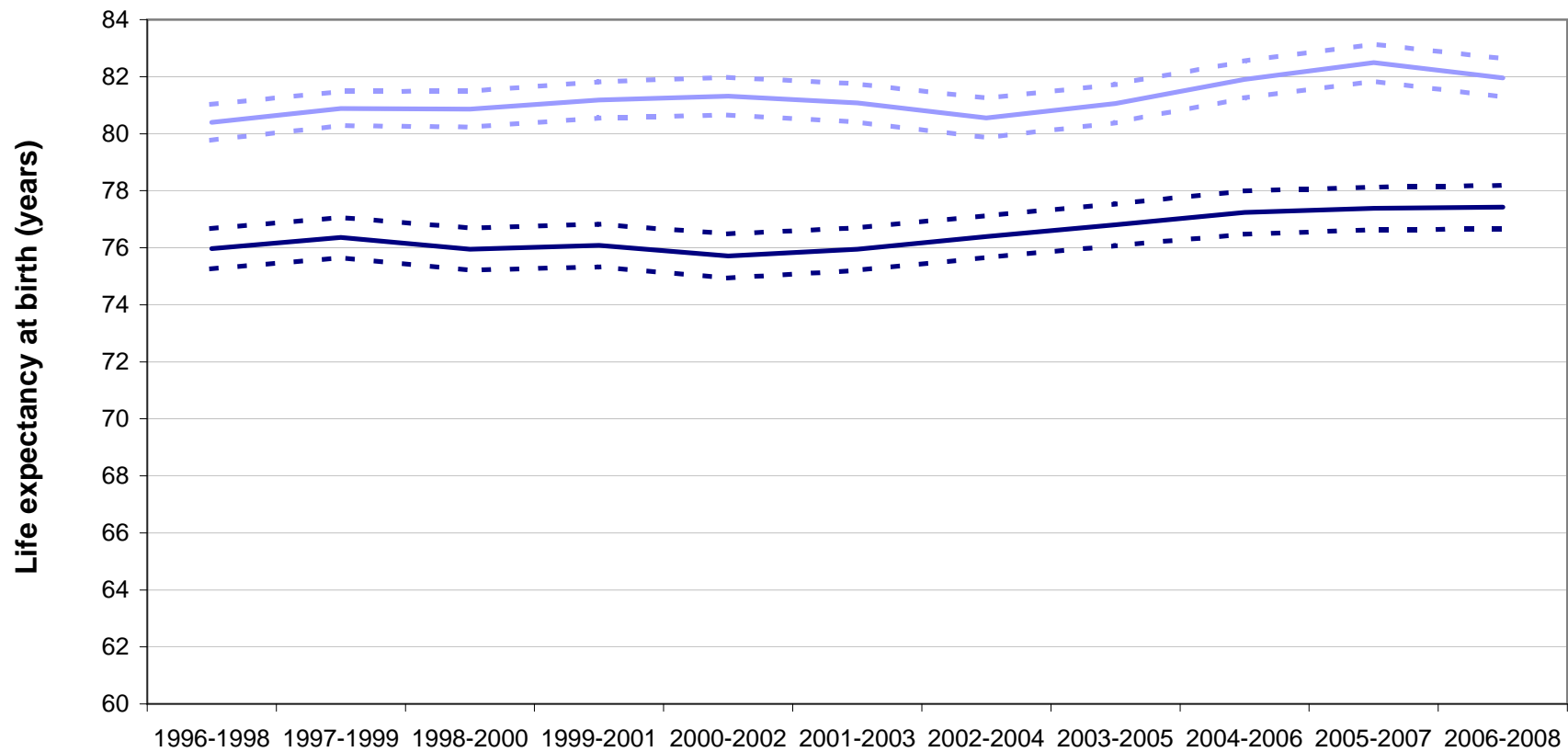


Figure 4 Life expectancy at birth, with 95% lower and upper confidence limits, 1996-1998 to 2006-2008 for males and females in:

East Renfrewshire Community Health &



time period



Figure 4 Life expectancy at birth, with 95% lower and upper confidence limits, 1996-1998 to 2006-2008 for males and females in:

Edinburgh Community Health Partnership

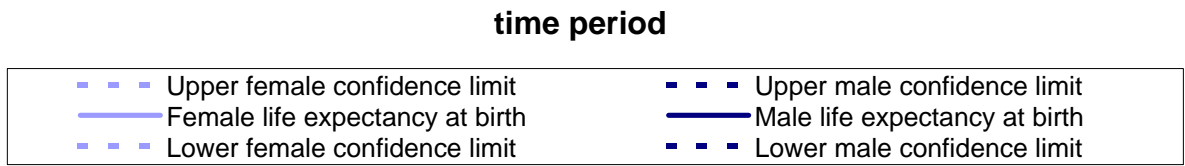
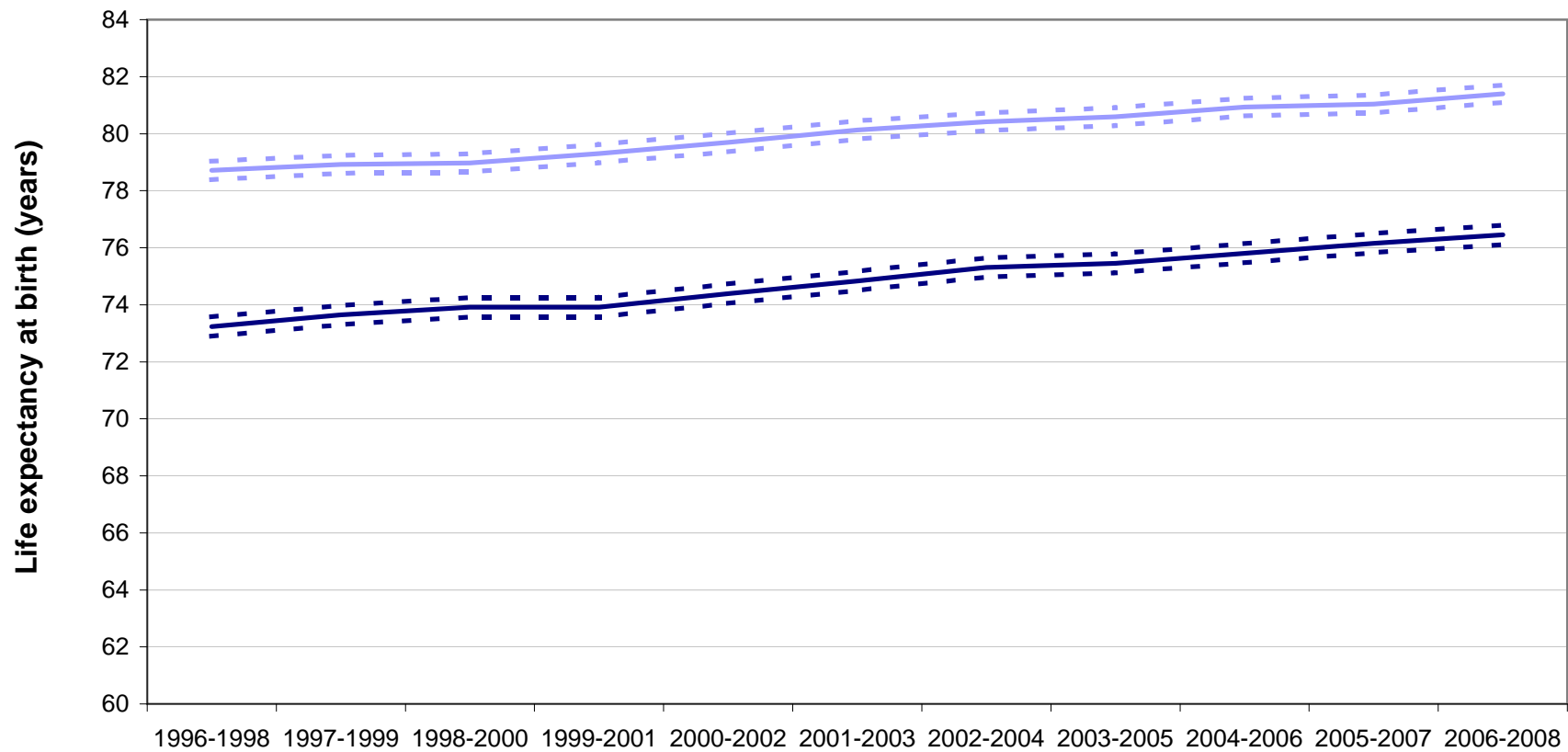
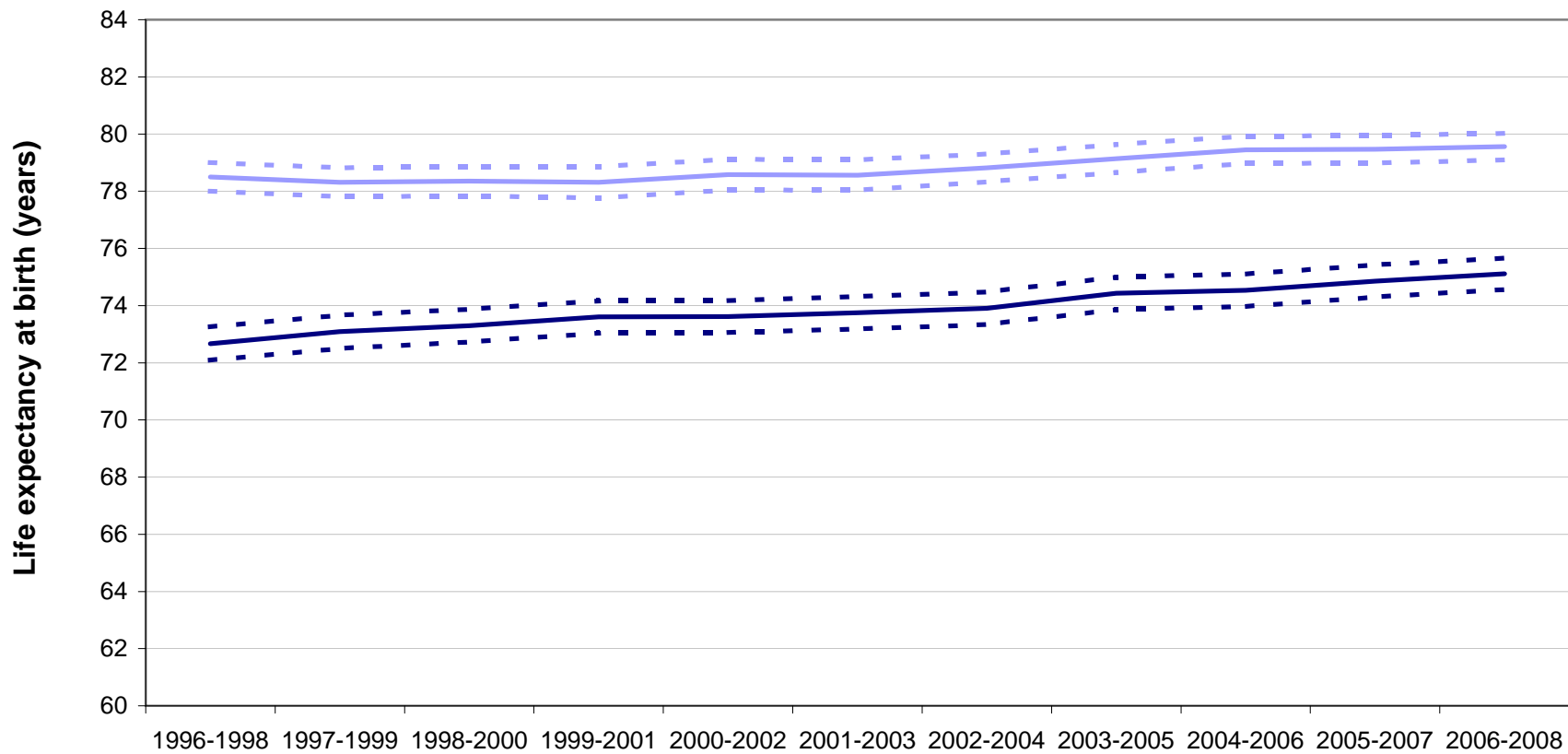


Figure 4 Life expectancy at birth, with 95% lower and upper confidence limits, 1996-1998 to 2006-2008 for males and females in:

Falkirk Community Health Partnership



time period



Figure 4 Life expectancy at birth, with 95% lower and upper confidence limits, 1996-1998 to 2006-2008 for males and females in:

Glenrothes & North East Fife Community

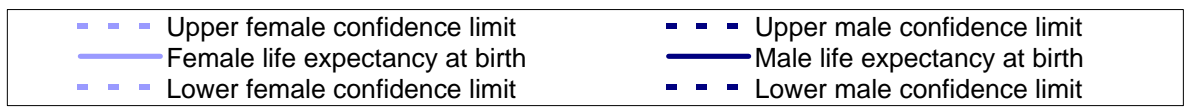
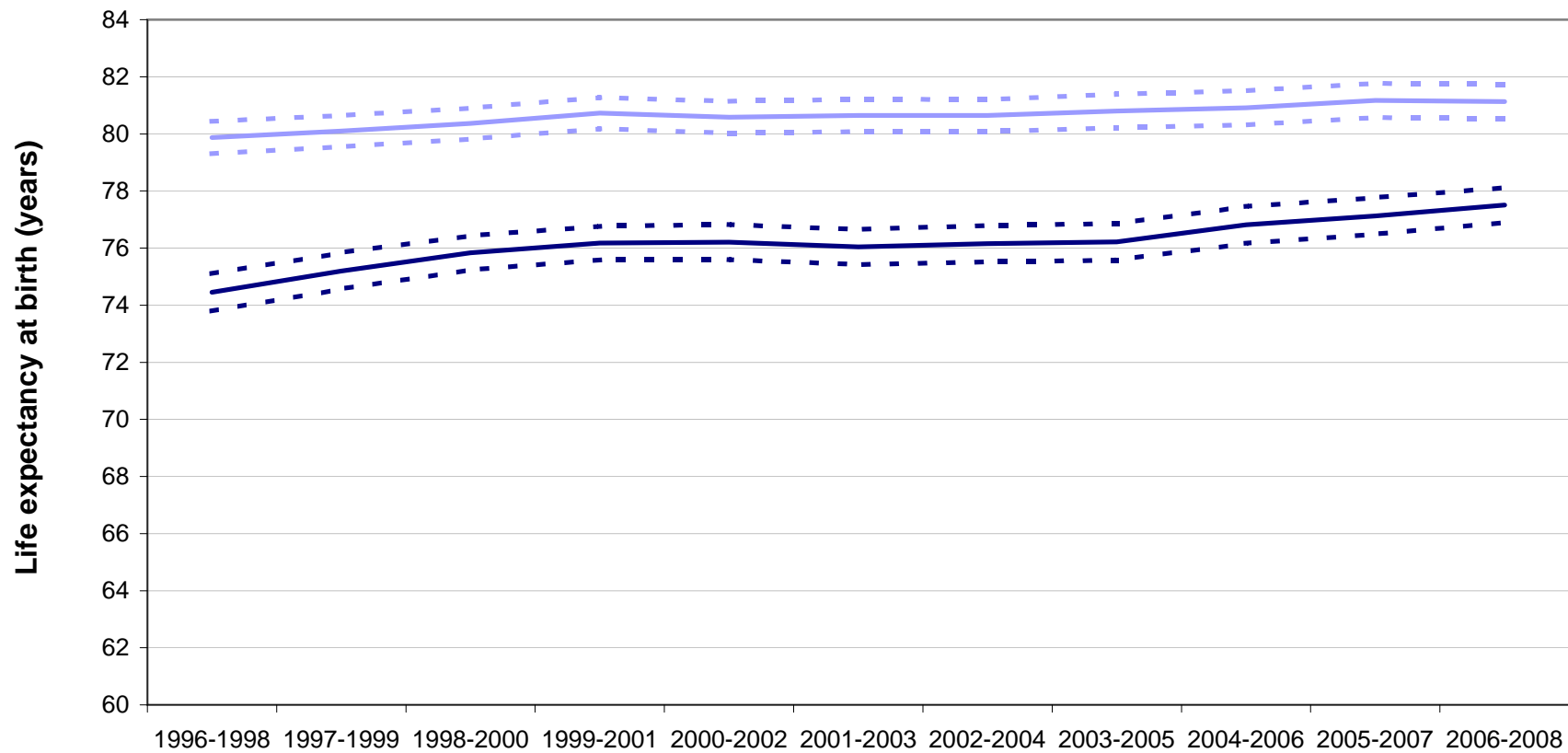
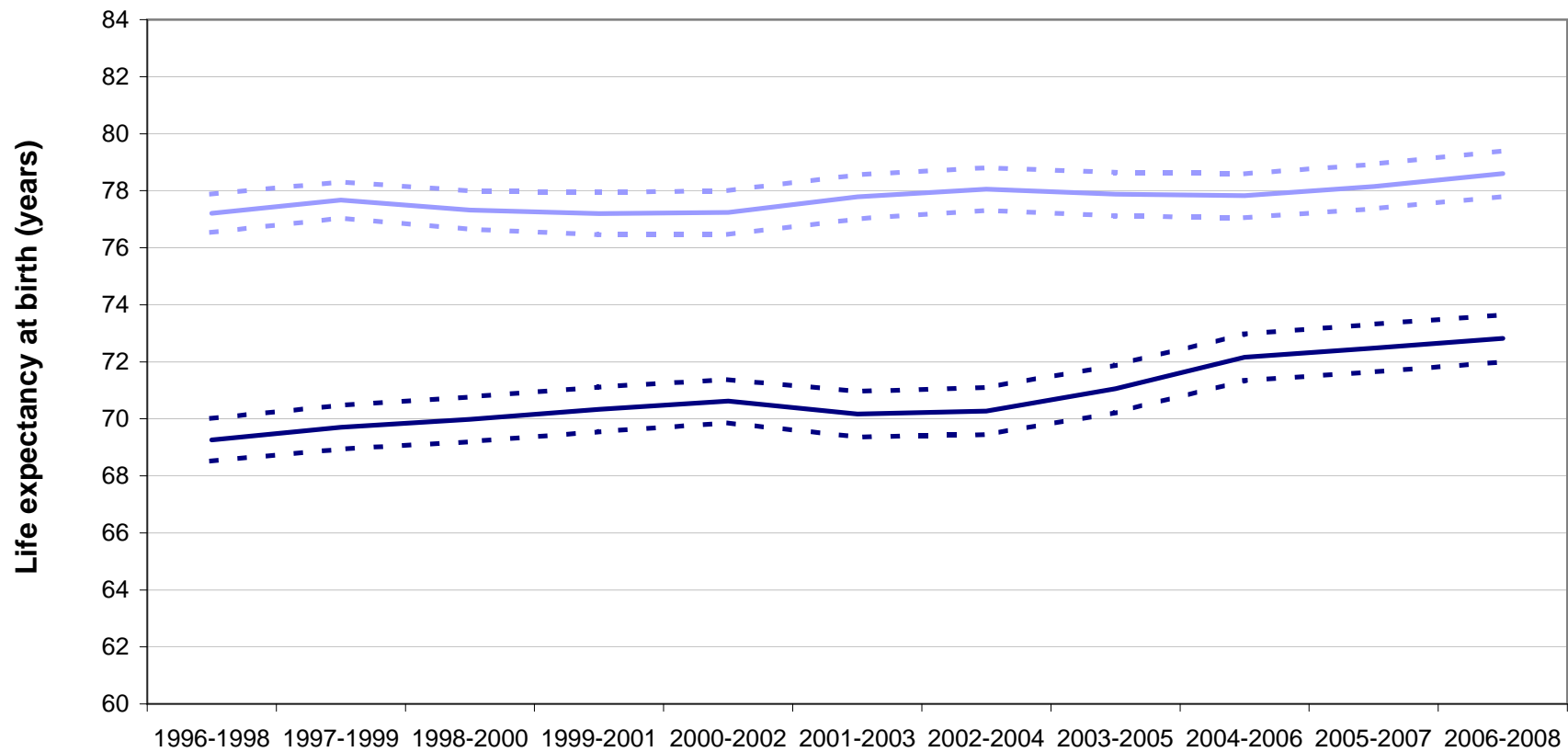


Figure 4 Life expectancy at birth, with 95% lower and upper confidence limits, 1996-1998 to 2006-2008 for males and females in:

Inverclyde Community Health & Care



time period

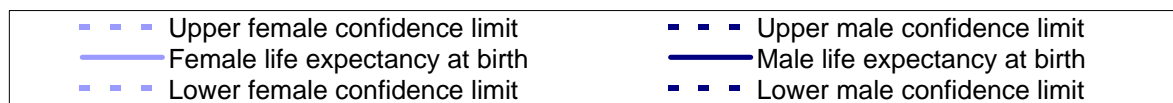


Figure 4 Life expectancy at birth, with 95% lower and upper confidence limits, 1996-1998 to 2006-2008 for males and females in:

Kirkcaldy & Levenmouth Community

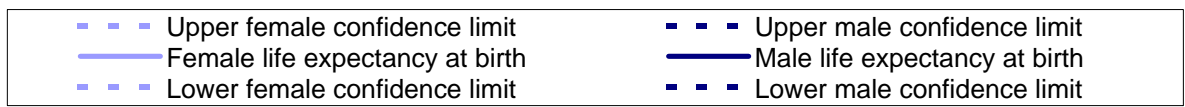
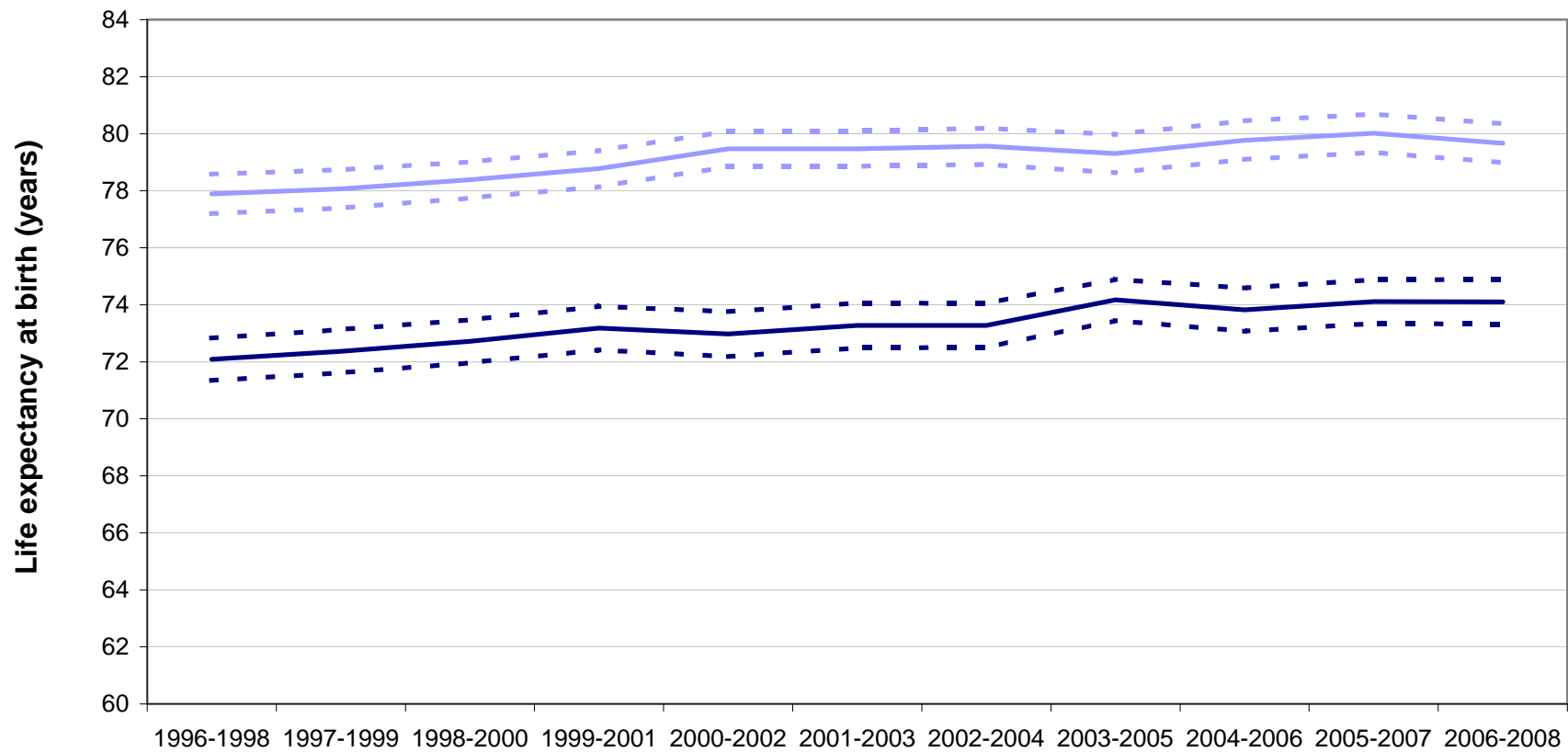
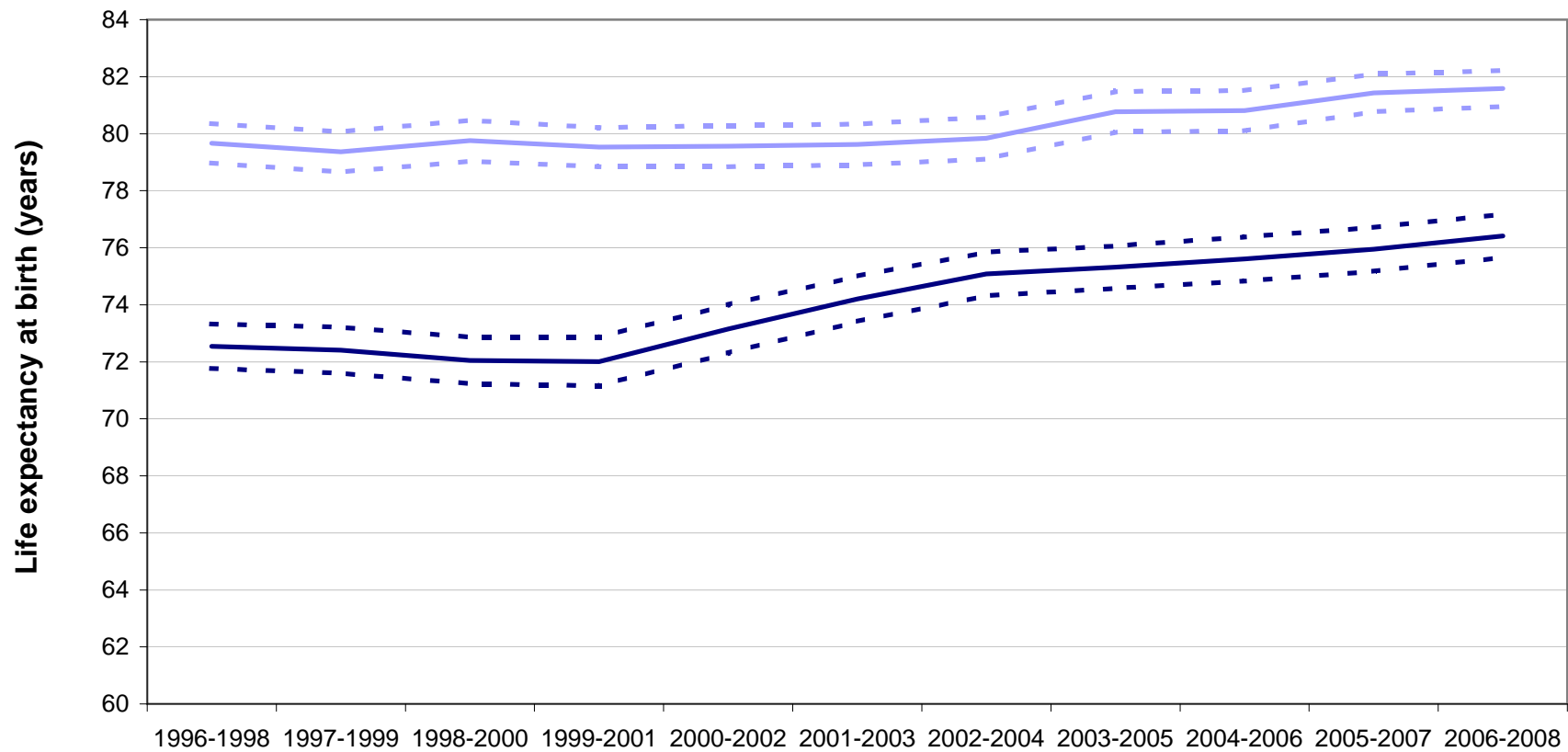


Figure 4 Life expectancy at birth, with 95% lower and upper confidence limits, 1996-1998 to 2006-2008 for males and females in:

Mid Highland Community Health

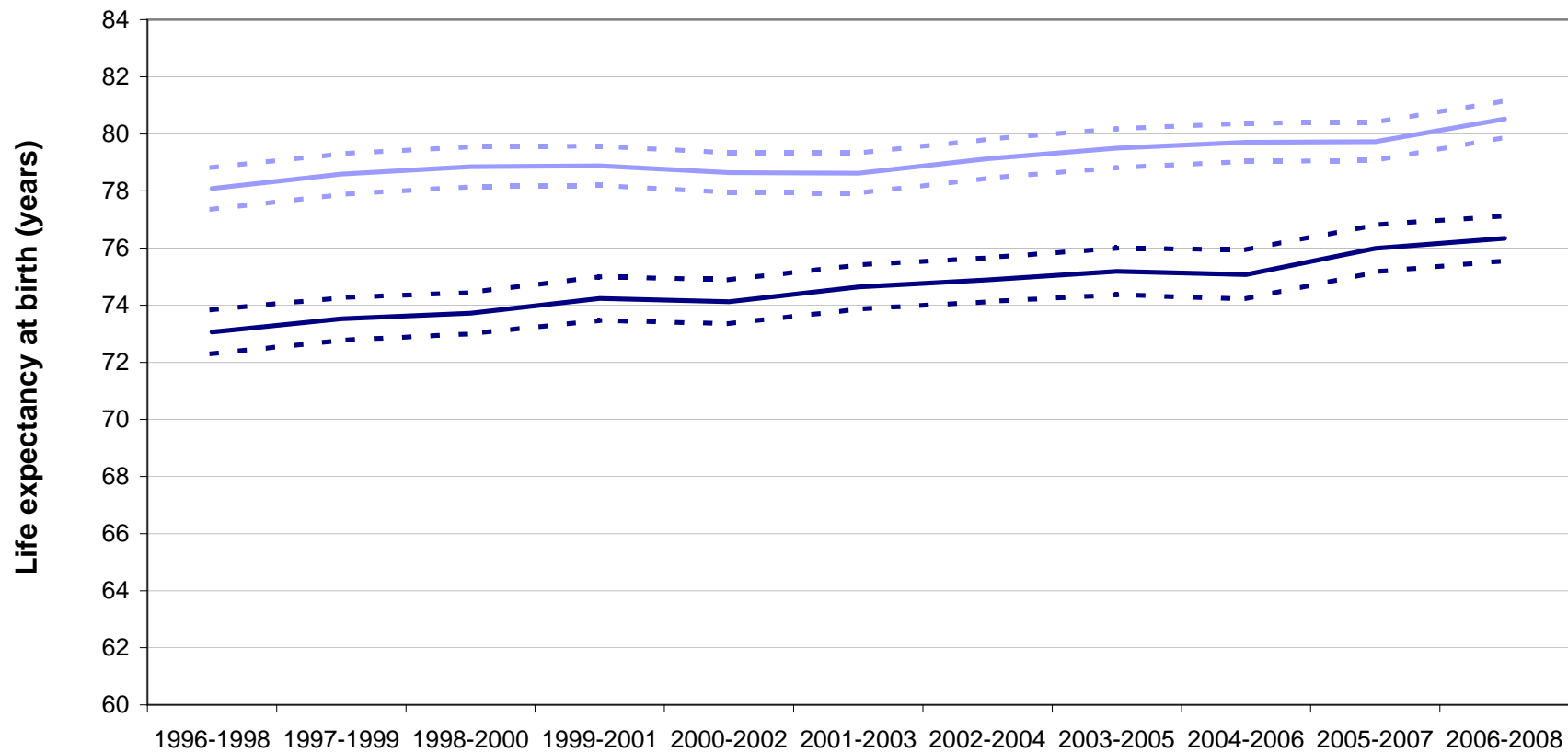


time period



Figure 4 Life expectancy at birth, with 95% lower and upper confidence limits, 1996-1998 to 2006-2008 for males and females in:

Midlothian Community Health Partnership



time period



Figure 4 Life expectancy at birth, with 95% lower and upper confidence limits, 1996-1998 to 2006-2008 for males and females in:

Moray Community Health & Social Care

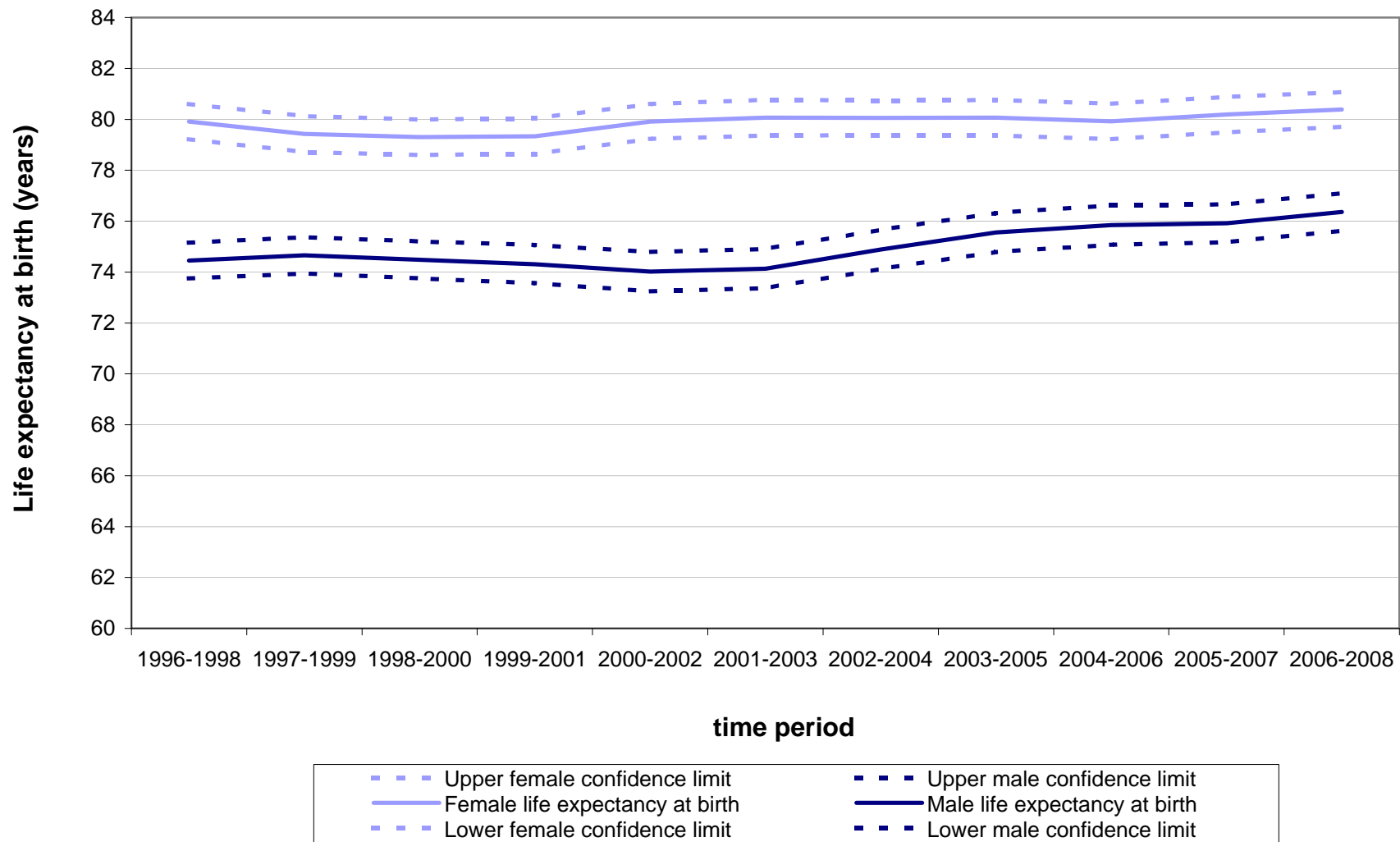
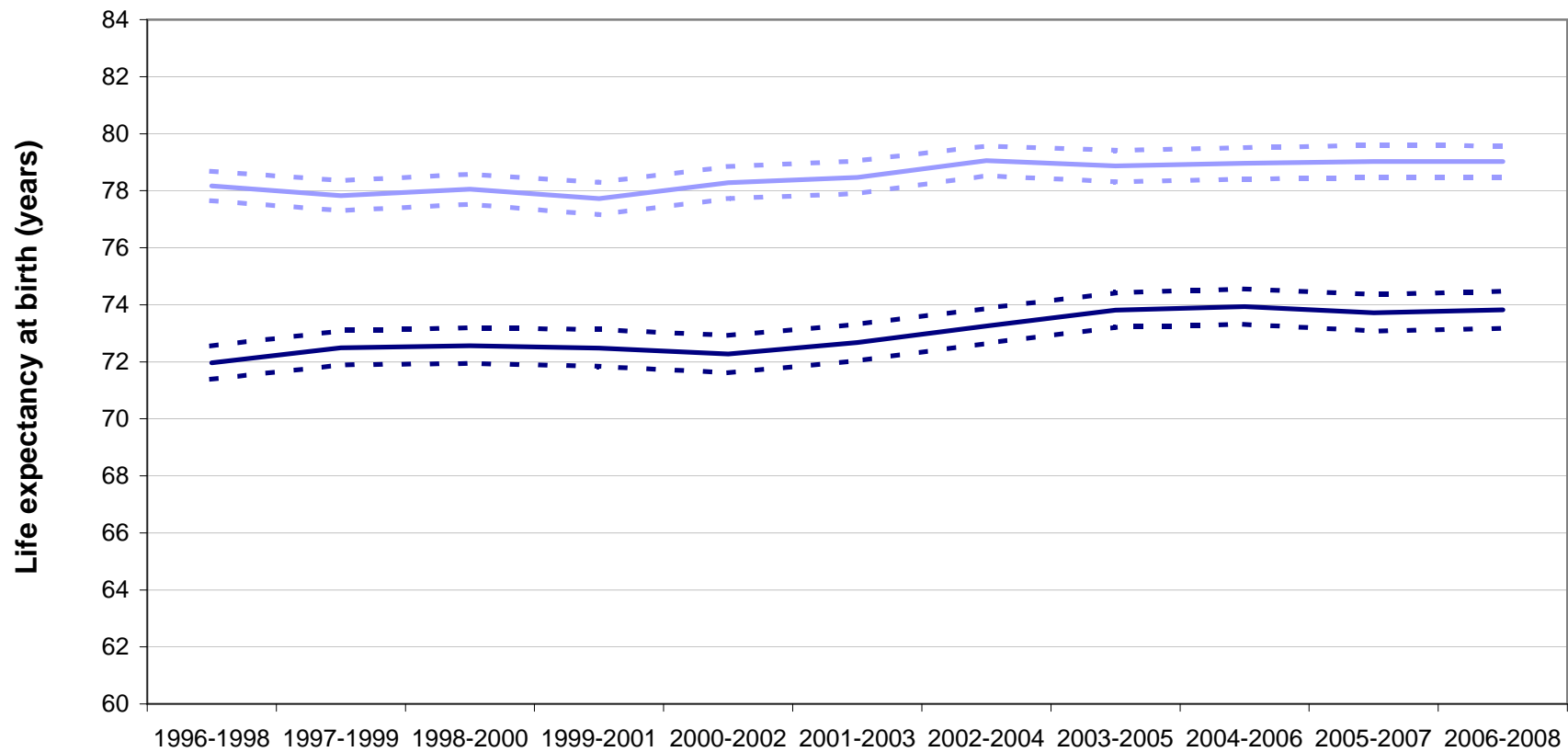


Figure 4 Life expectancy at birth, with 95% lower and upper confidence limits, 1996-1998 to 2006-2008 for males and females in:

North Ayrshire Community Health



time period



Figure 4 Life expectancy at birth, with 95% lower and upper confidence limits, 1996-1998 to 2006-2008 for males and females in:

North Glasgow Community Health & Care

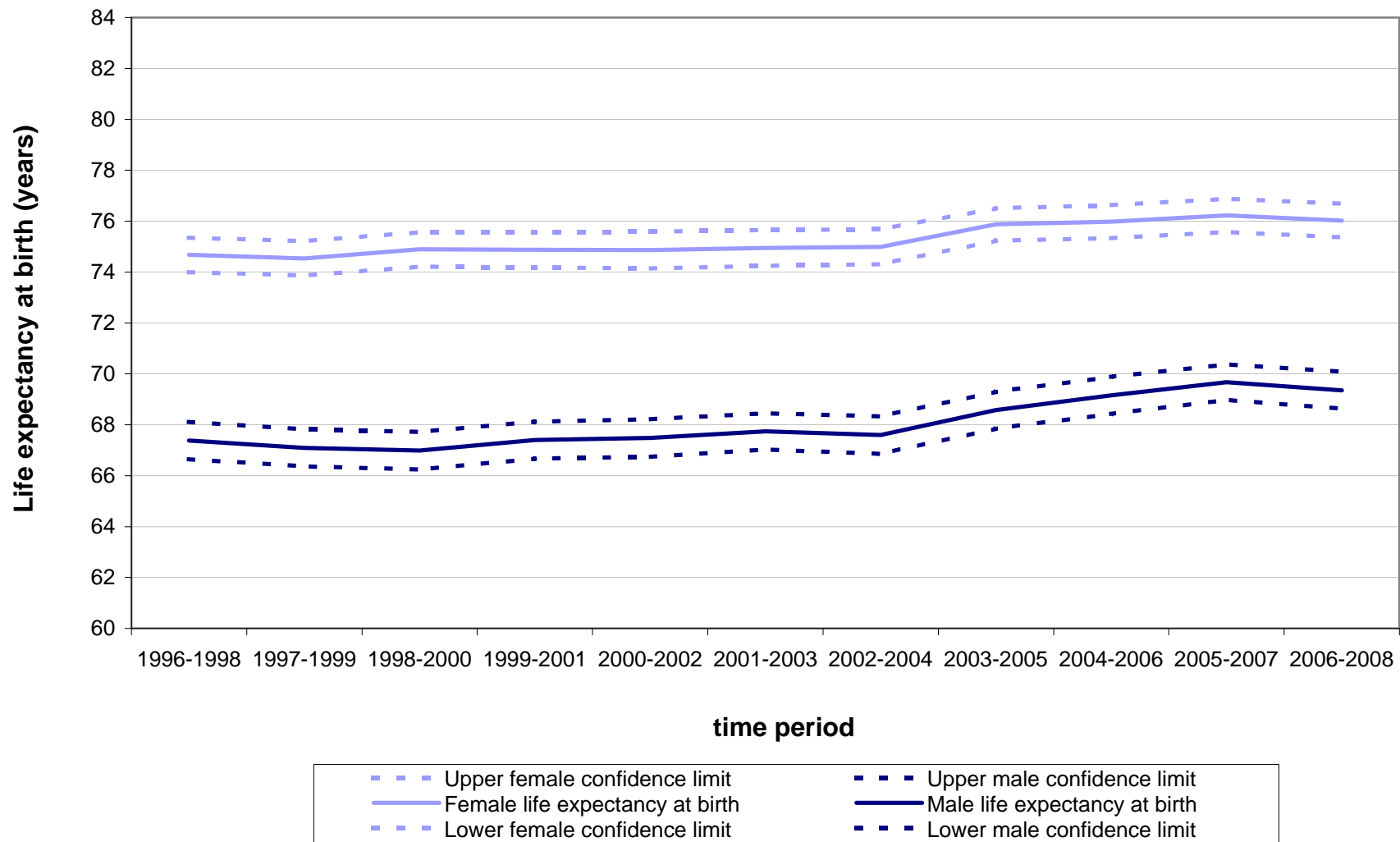
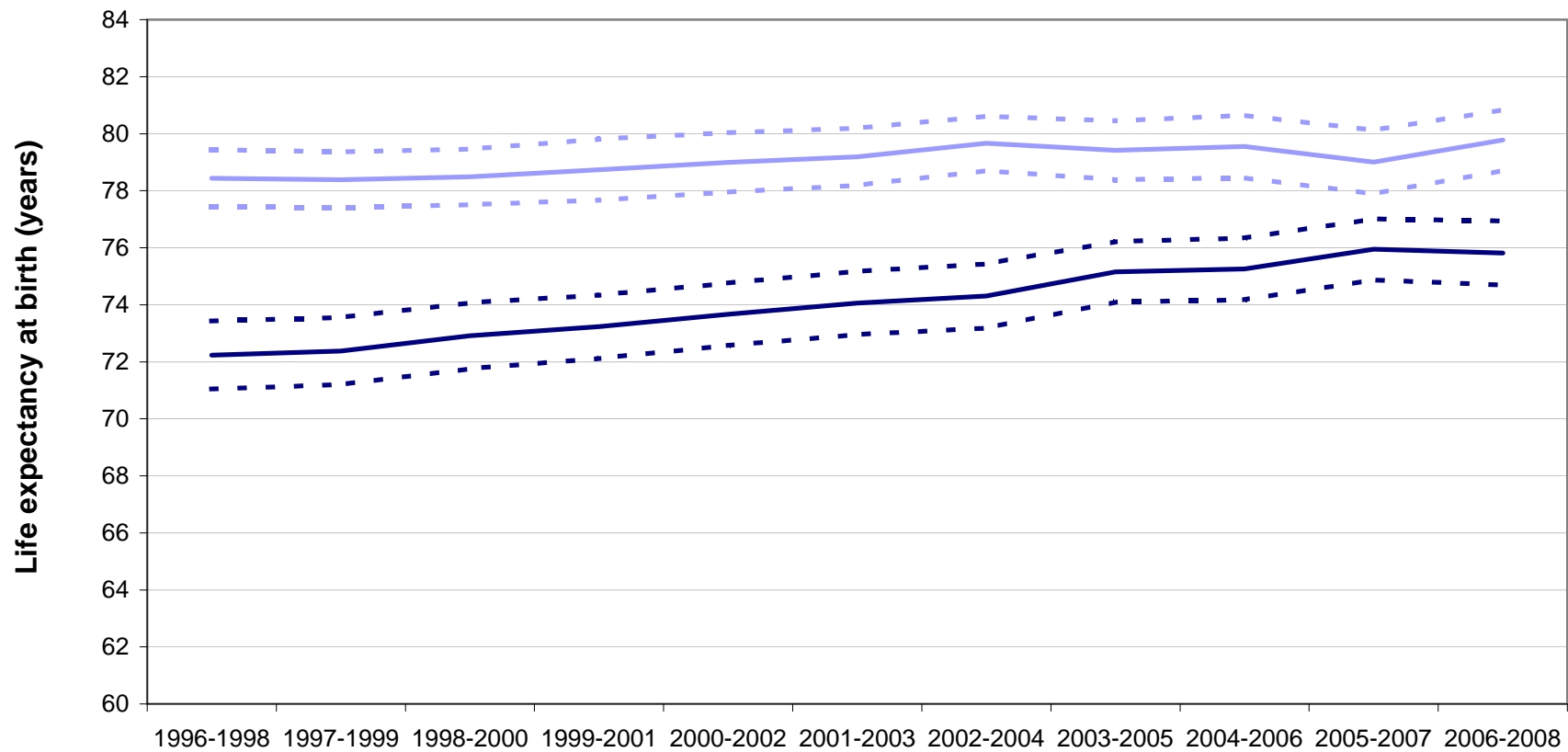


Figure 4 Life expectancy at birth, with 95% lower and upper confidence limits, 1996-1998 to 2006-2008 for males and females in:

North Highland Community Health



time period



Figure 4 Life expectancy at birth, with 95% lower and upper confidence limits, 1996-1998 to 2006-2008 for males and females in:

North Lanarkshire Community Health

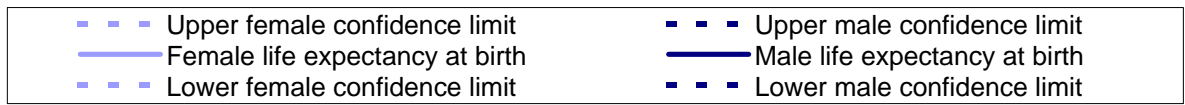
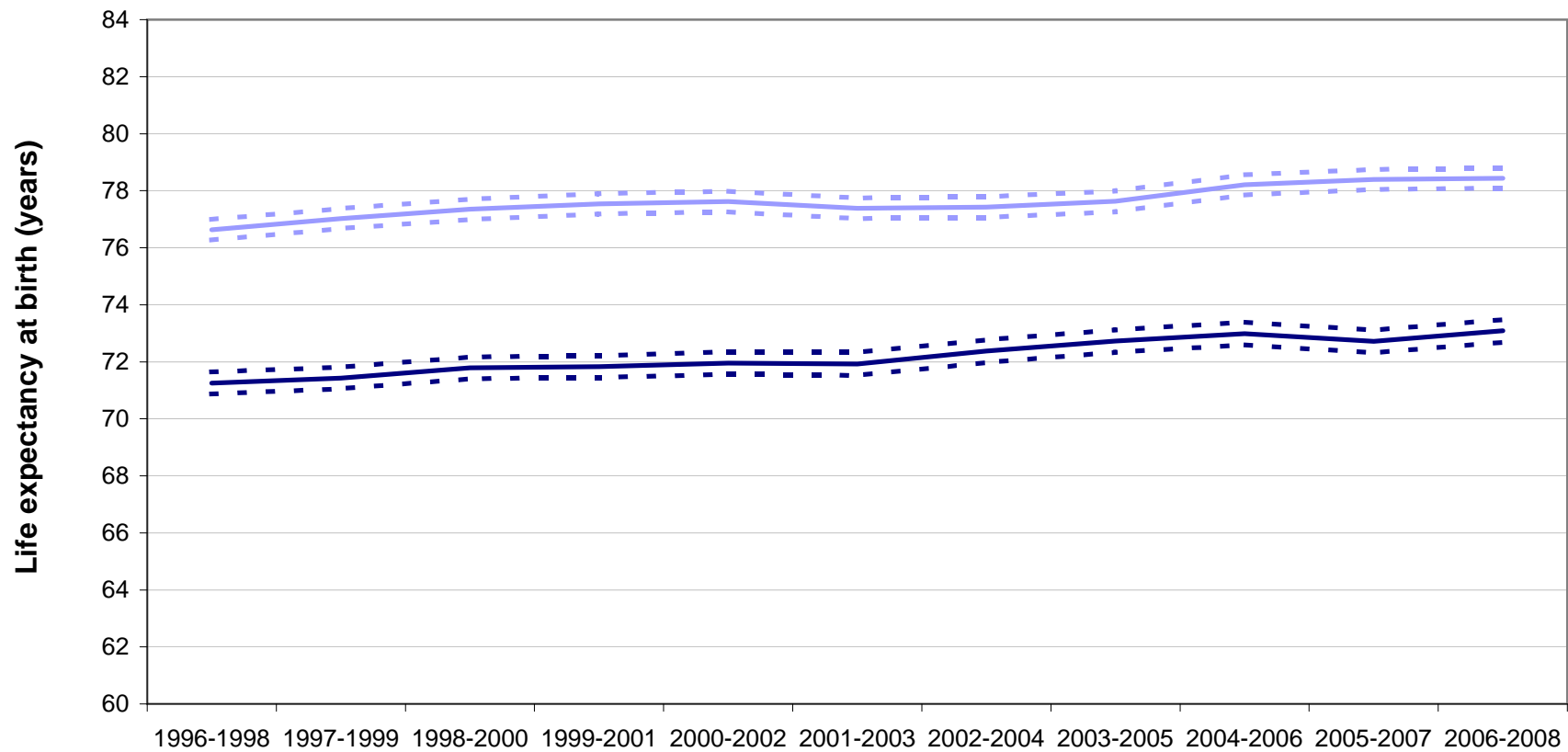
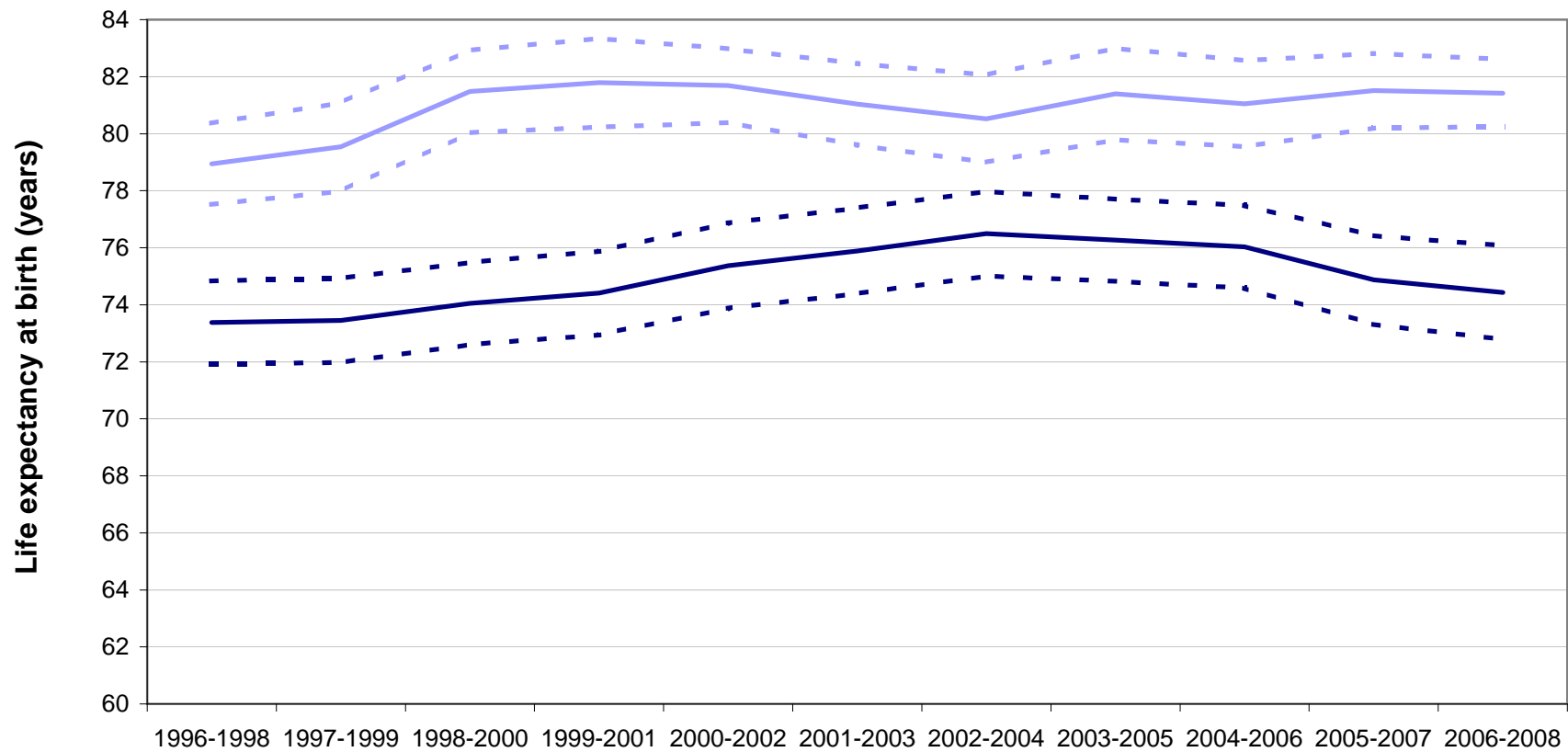


Figure 4 Life expectancy at birth, with 95% lower and upper confidence limits, 1996-1998 to 2006-2008 for males and females in:

Orkney Community Health Partnership



time period



Figure 4 Life expectancy at birth, with 95% lower and upper confidence limits, 1996-1998 to 2006-2008 for males and females in:

Perth & Kinross Community Health

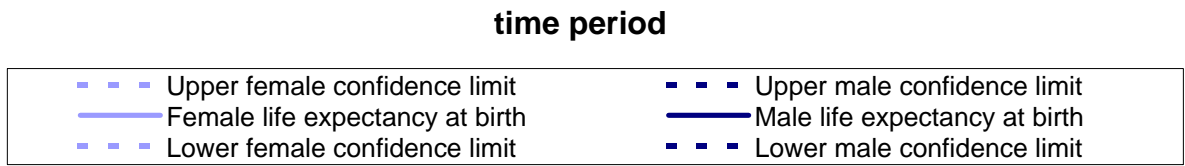
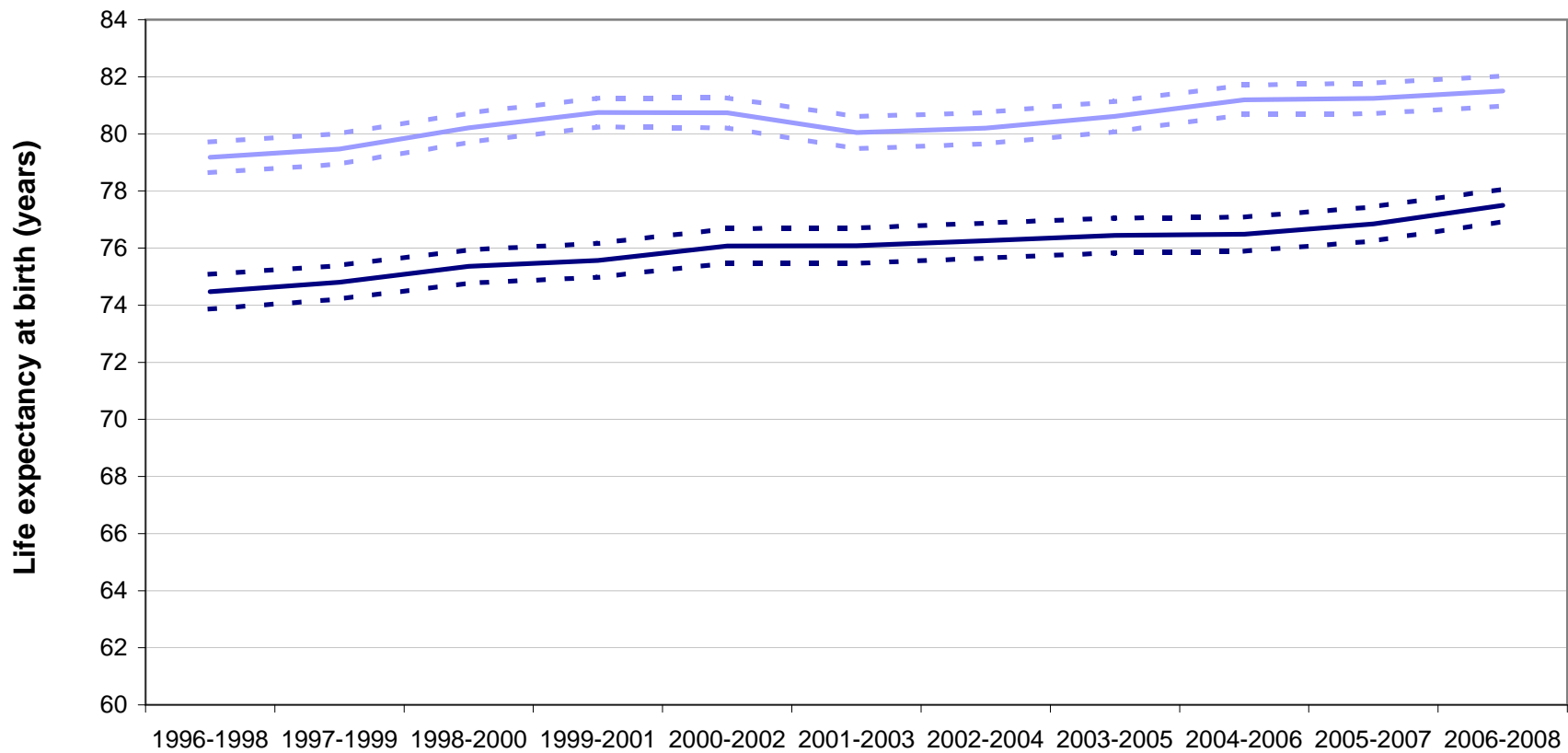
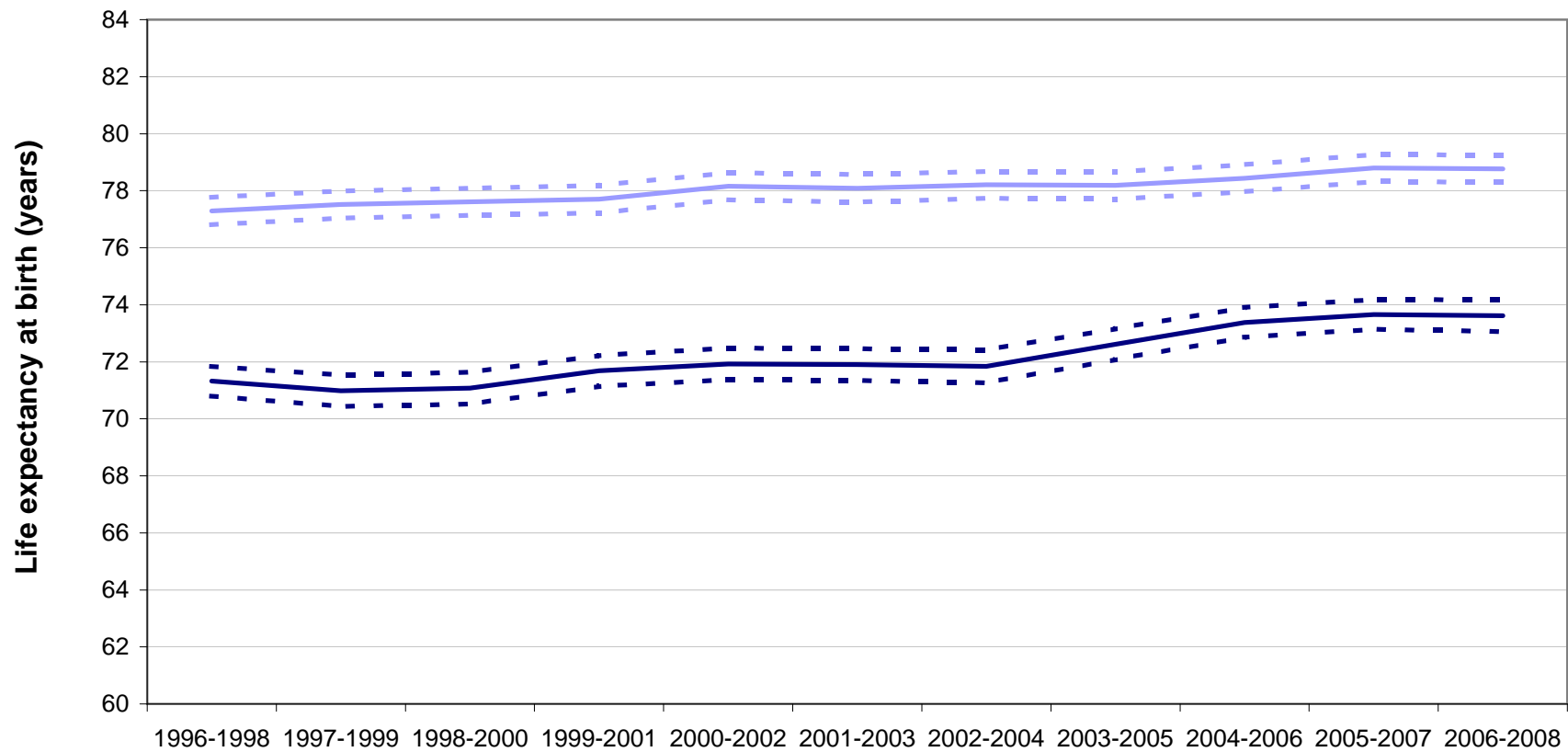


Figure 4 Life expectancy at birth, with 95% lower and upper confidence limits, 1996-1998 to 2006-2008 for males and females in:

Renfrewshire Community Health

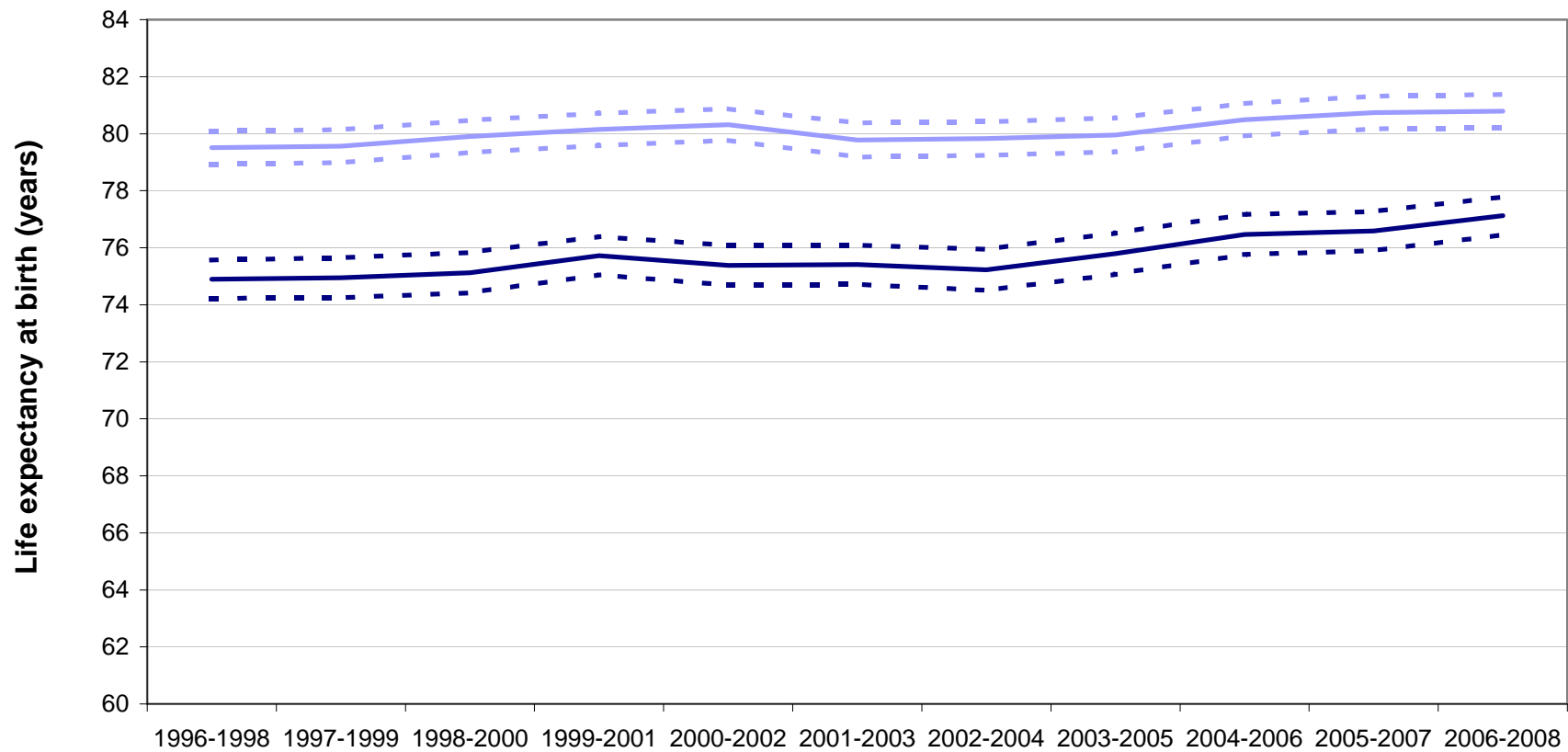


time period



Figure 4 Life expectancy at birth, with 95% lower and upper confidence limits, 1996-1998 to 2006-2008 for males and females in:

Scottish Borders Community Health &

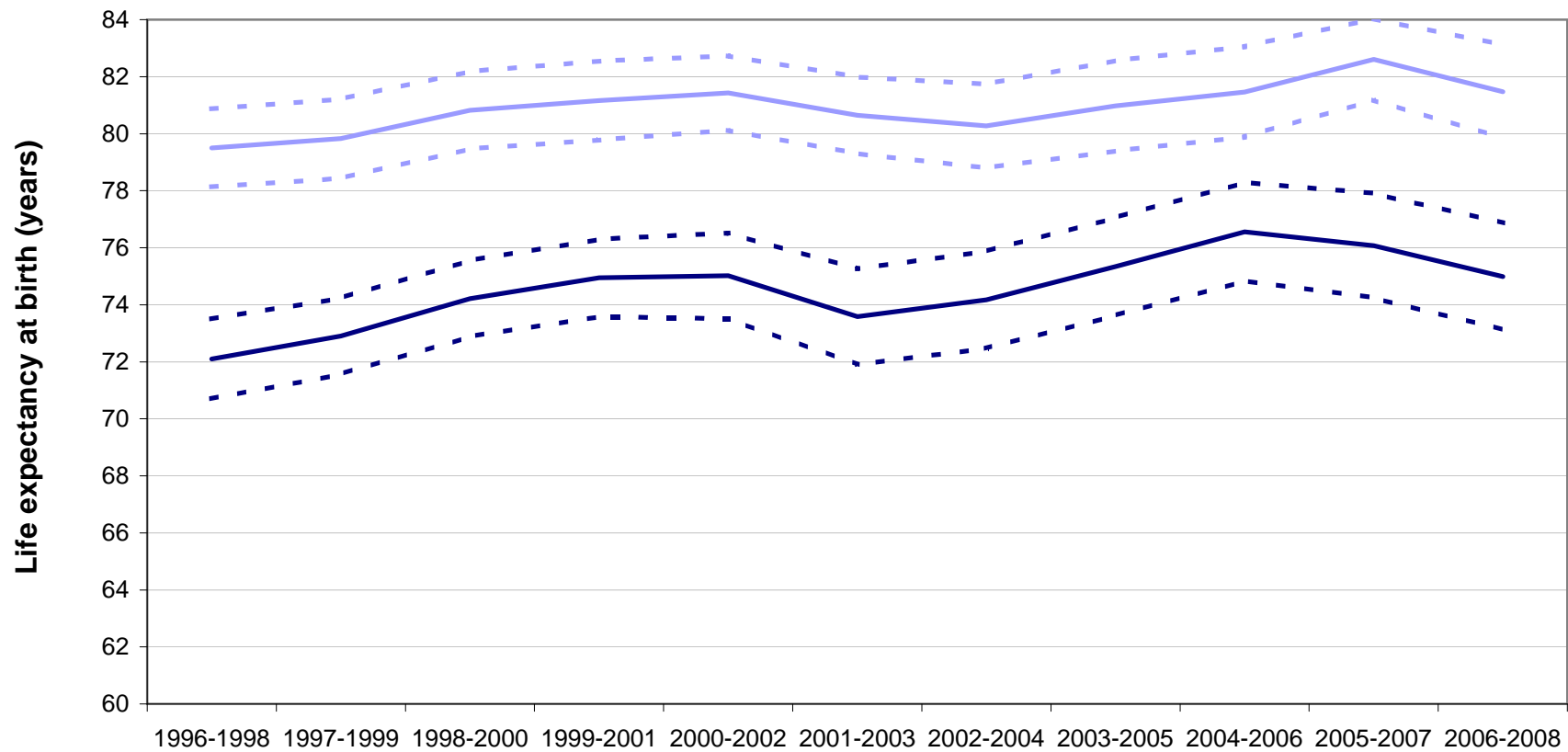


time period



Figure 4 Life expectancy at birth, with 95% lower and upper confidence limits, 1996-1998 to 2006-2008 for males and females in:

Shetland Community Health Partnership



time period



Figure 4 Life expectancy at birth, with 95% lower and upper confidence limits, 1996-1998 to 2006-2008 for males and females in:

South Ayrshire Community Health

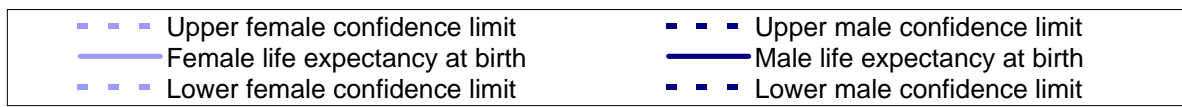
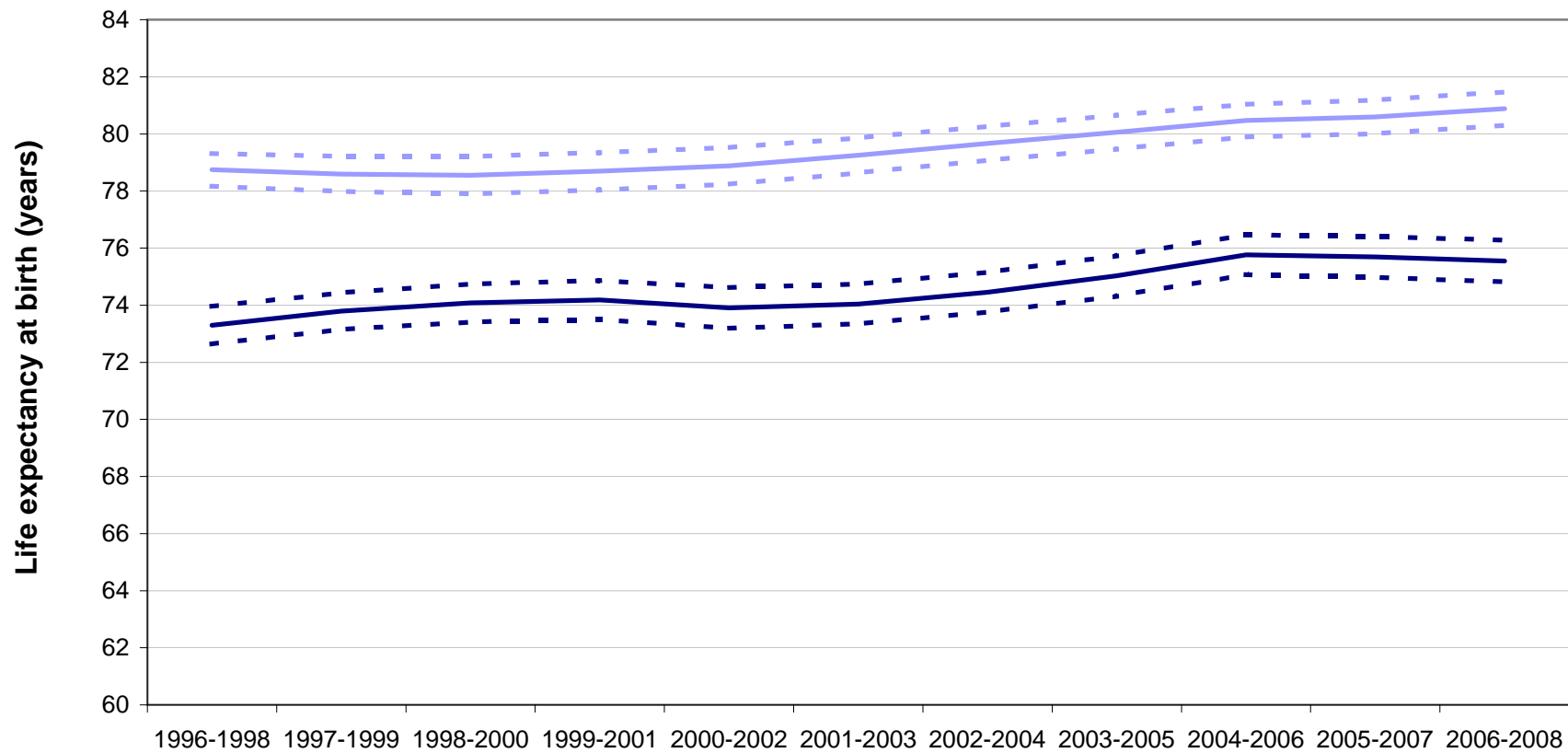
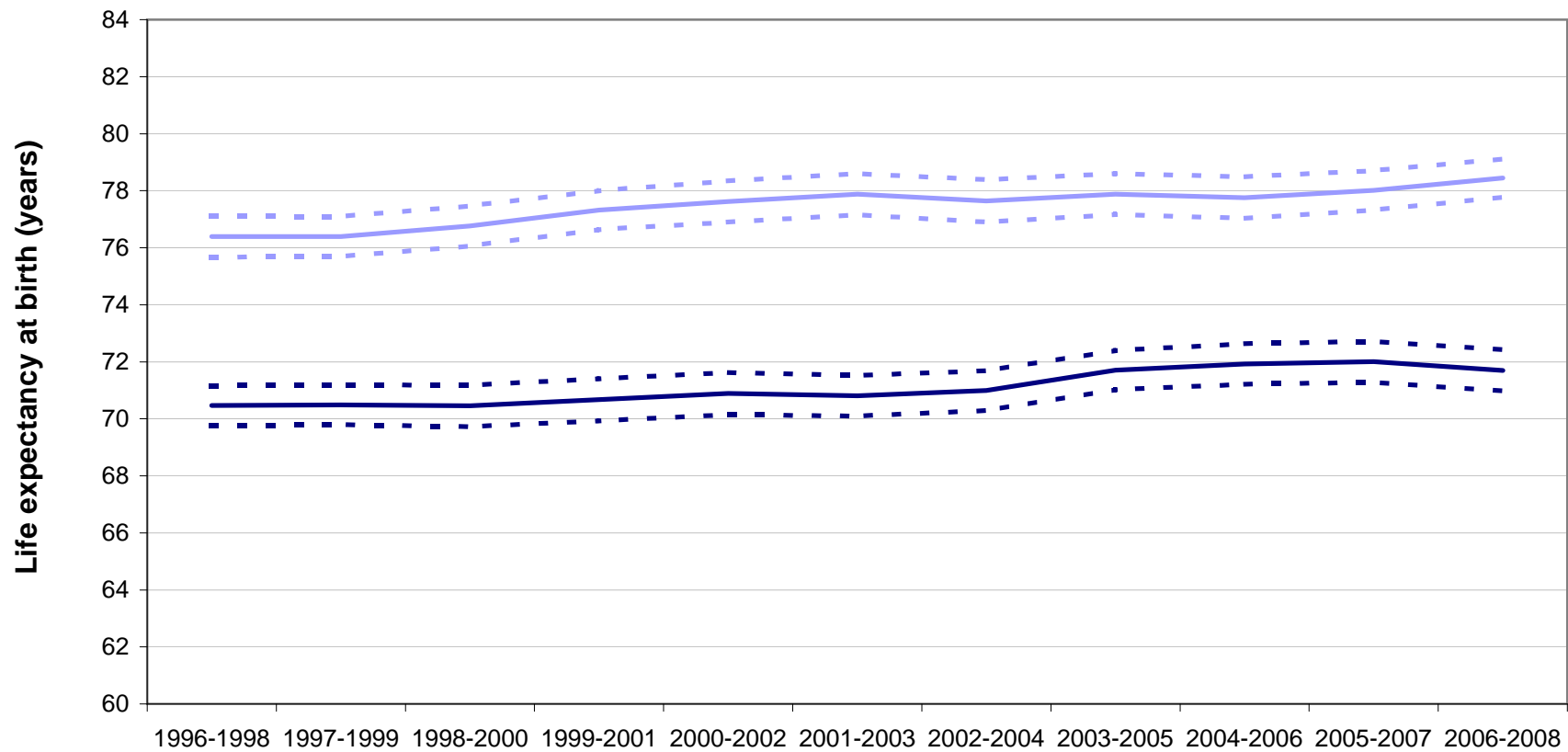


Figure 4 Life expectancy at birth, with 95% lower and upper confidence limits, 1996-1998 to 2006-2008 for males and females in:

South East Glasgow Community Health &



time period

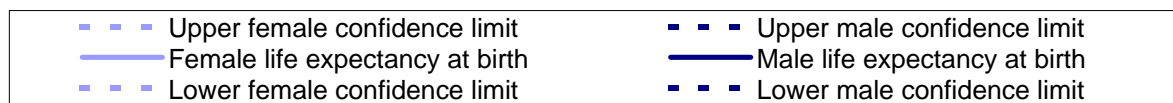


Figure 4 Life expectancy at birth, with 95% lower and upper confidence limits, 1996-1998 to 2006-2008 for males and females in:

South East Highland Community Health

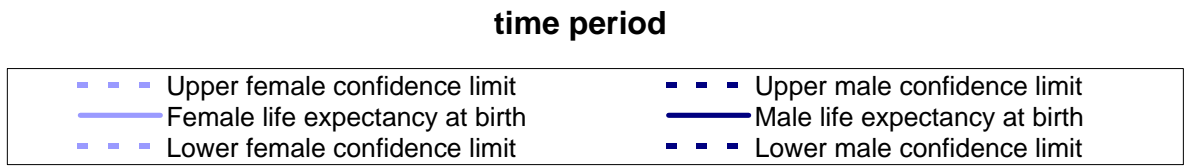
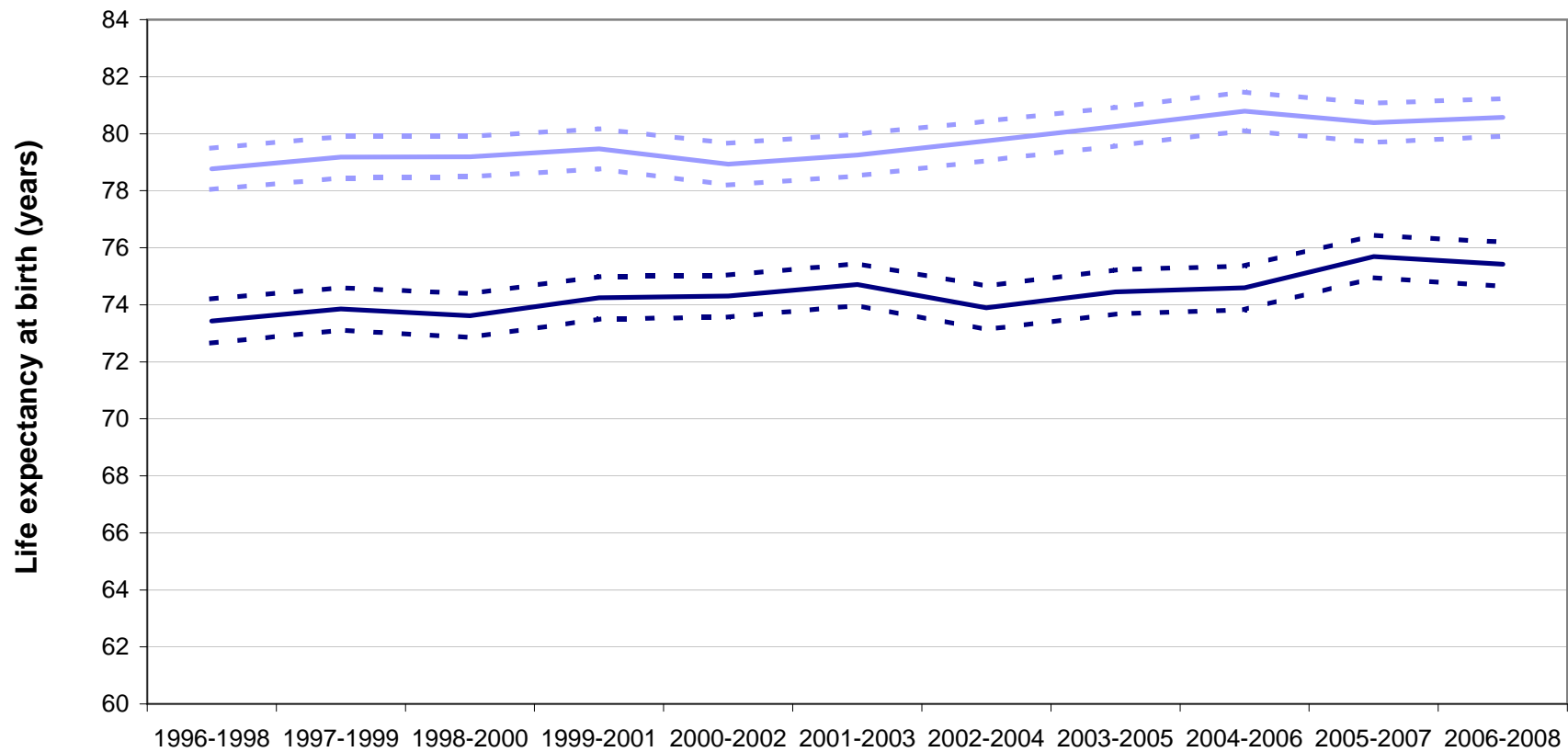


Figure 4 Life expectancy at birth, with 95% lower and upper confidence limits, 1996-1998 to 2006-2008 for males and females in:

South Lanarkshire Community Health

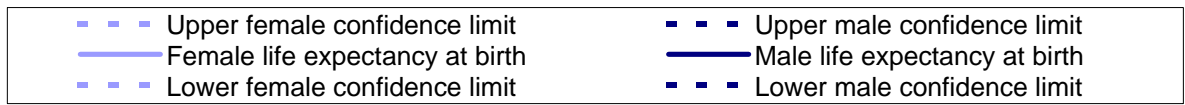
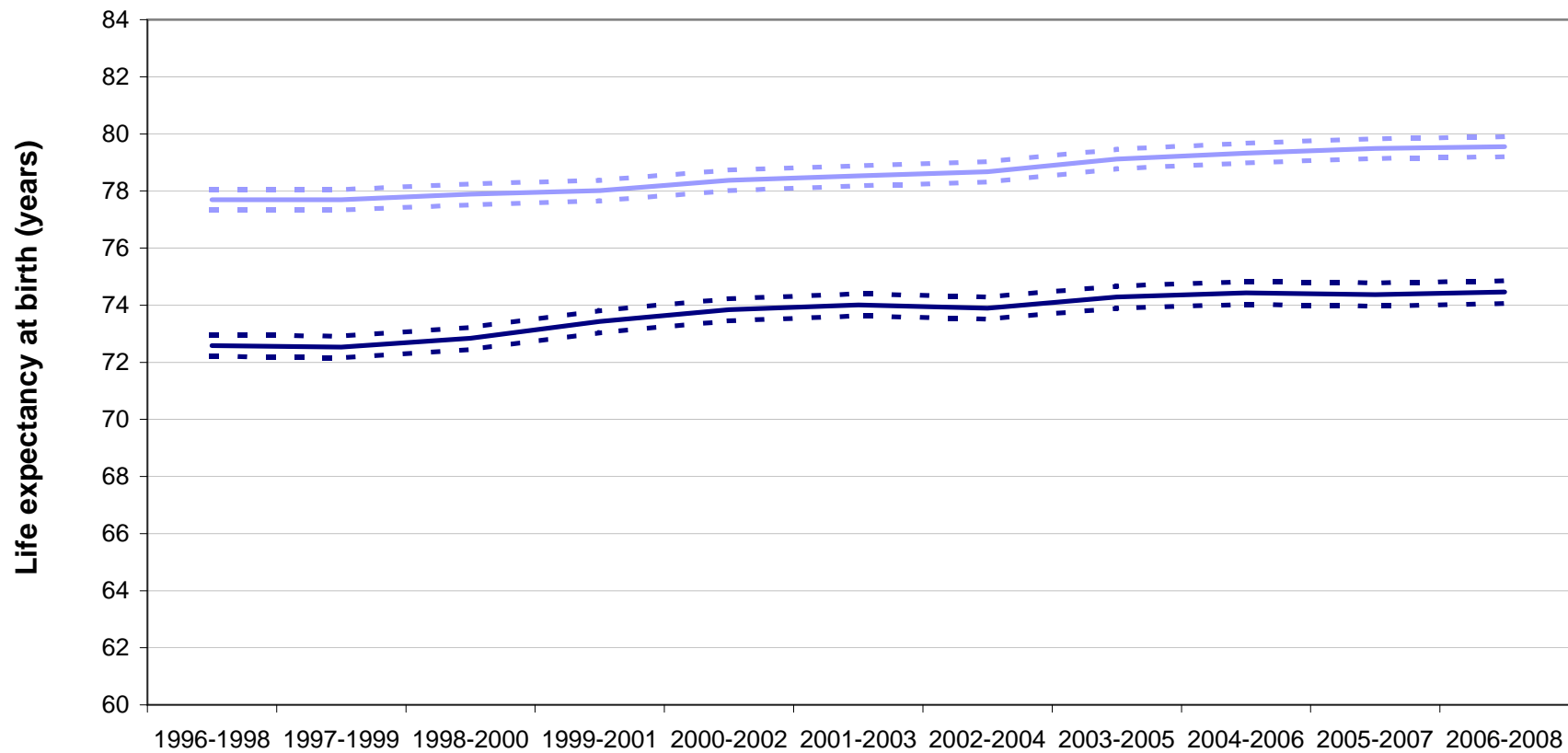


Figure 4 Life expectancy at birth, with 95% lower and upper confidence limits, 1996-1998 to 2006-2008 for males and females in:

South West Glasgow Community Health &

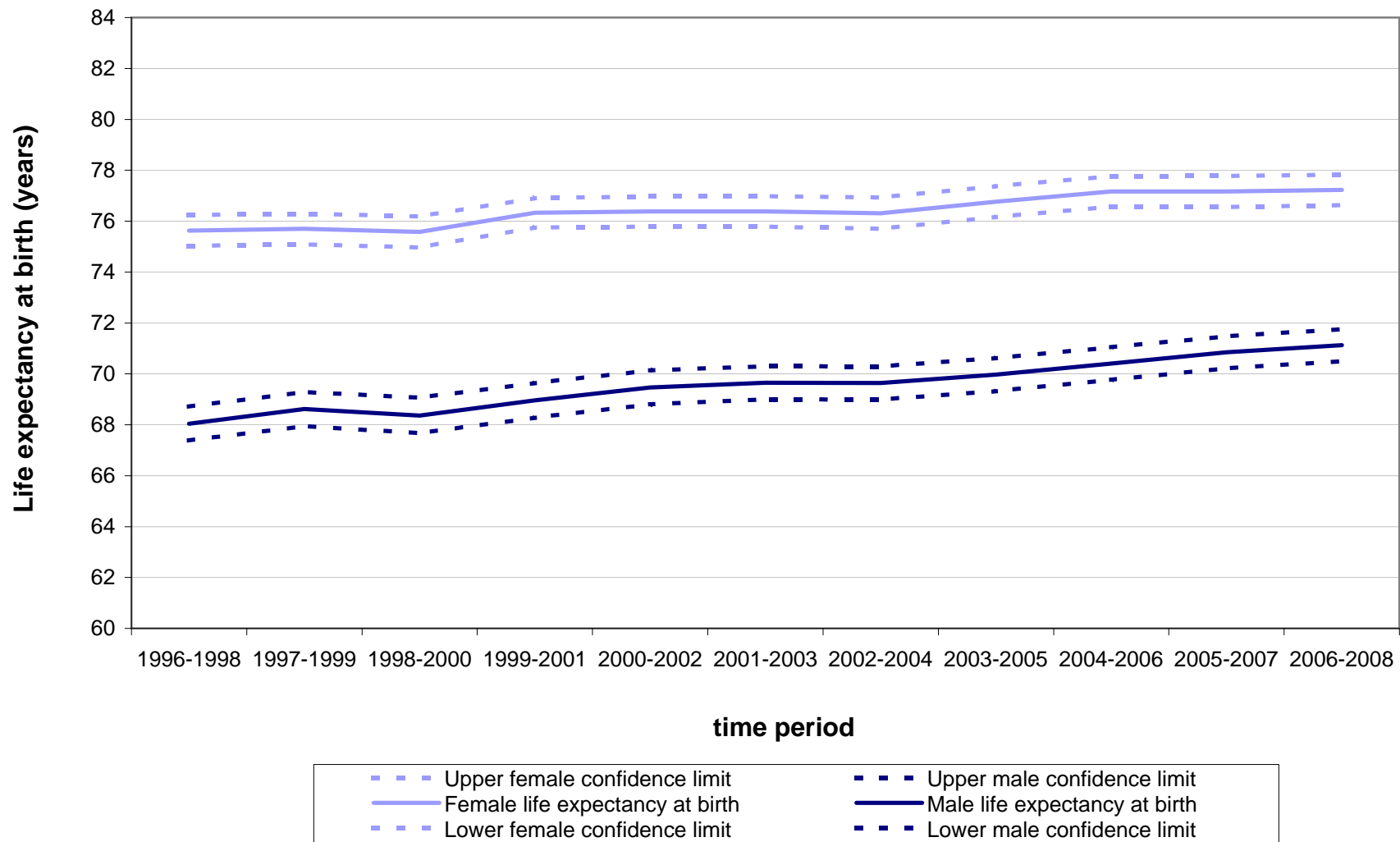


Figure 4 Life expectancy at birth, with 95% lower and upper confidence limits, 1996-1998 to 2006-2008 for males and females in:

Stirling Community Health Partnership

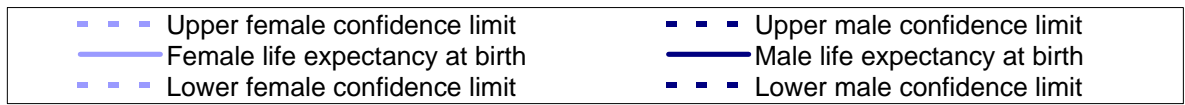
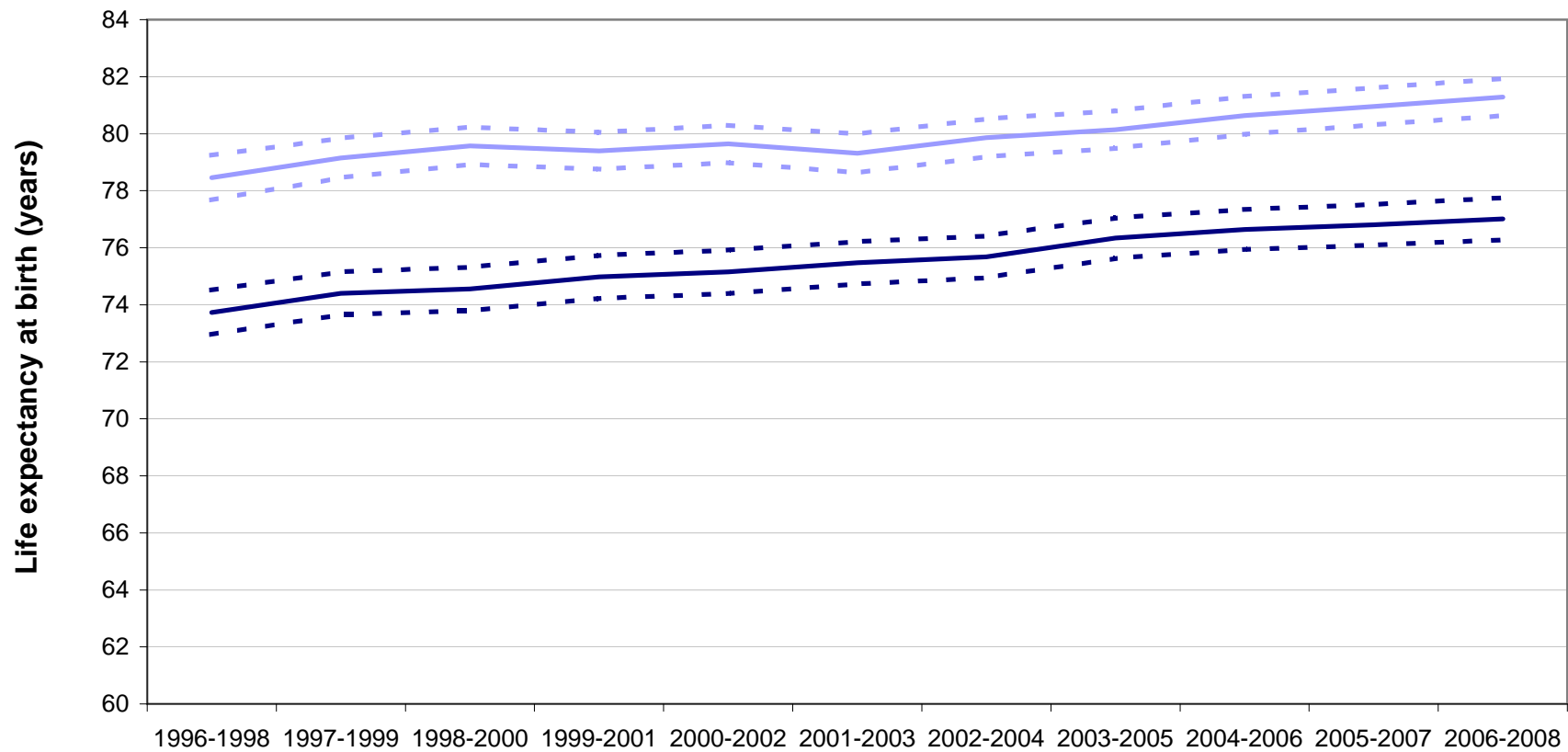


Figure 4 Life expectancy at birth, with 95% lower and upper confidence limits, 1996-1998 to 2006-2008 for males and females in:

West Dunbartonshire Community Health

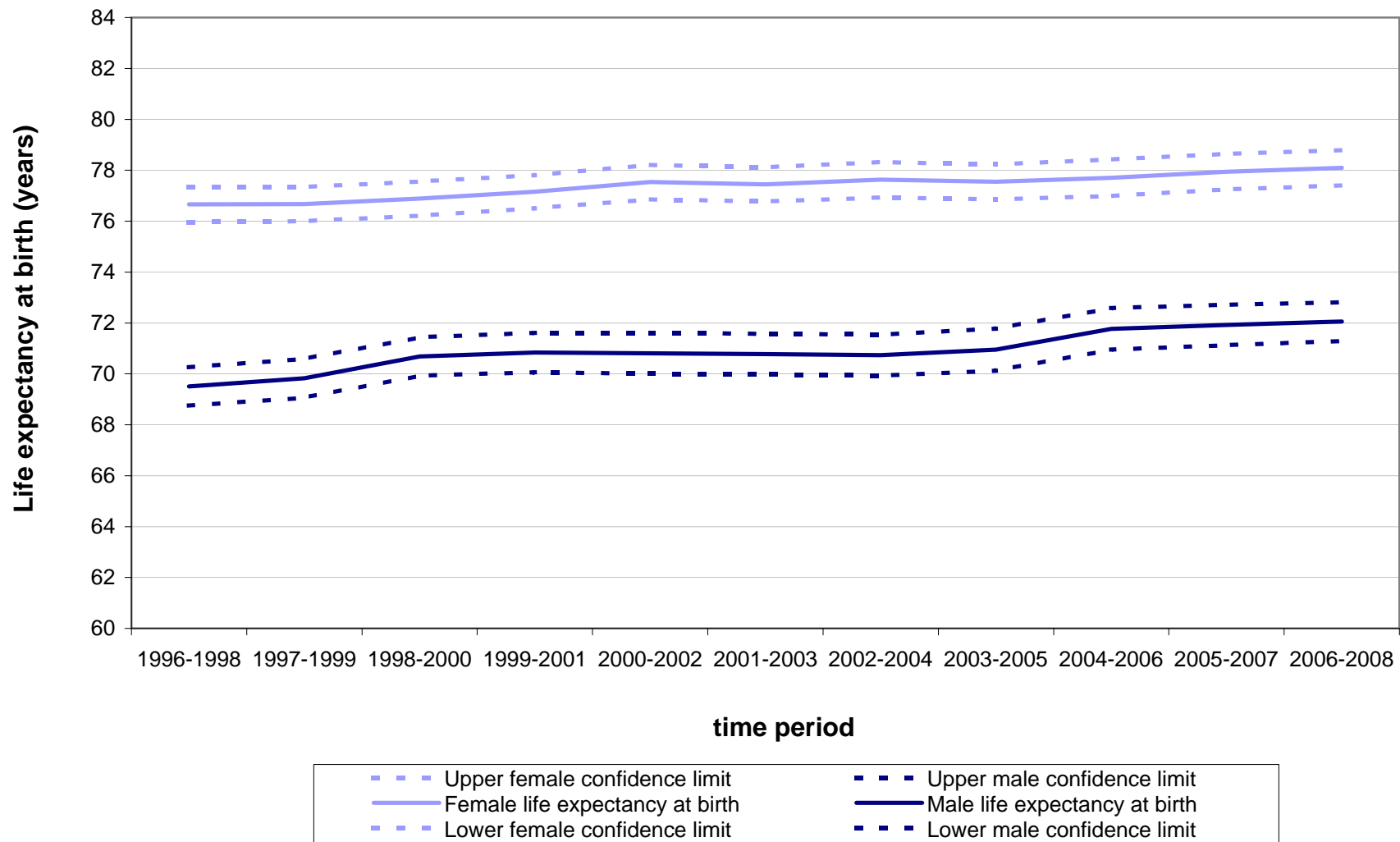


Figure 4 Life expectancy at birth, with 95% lower and upper confidence limits, 1996-1998 to 2006-2008 for males and females in:

West Glasgow Community Health & Care

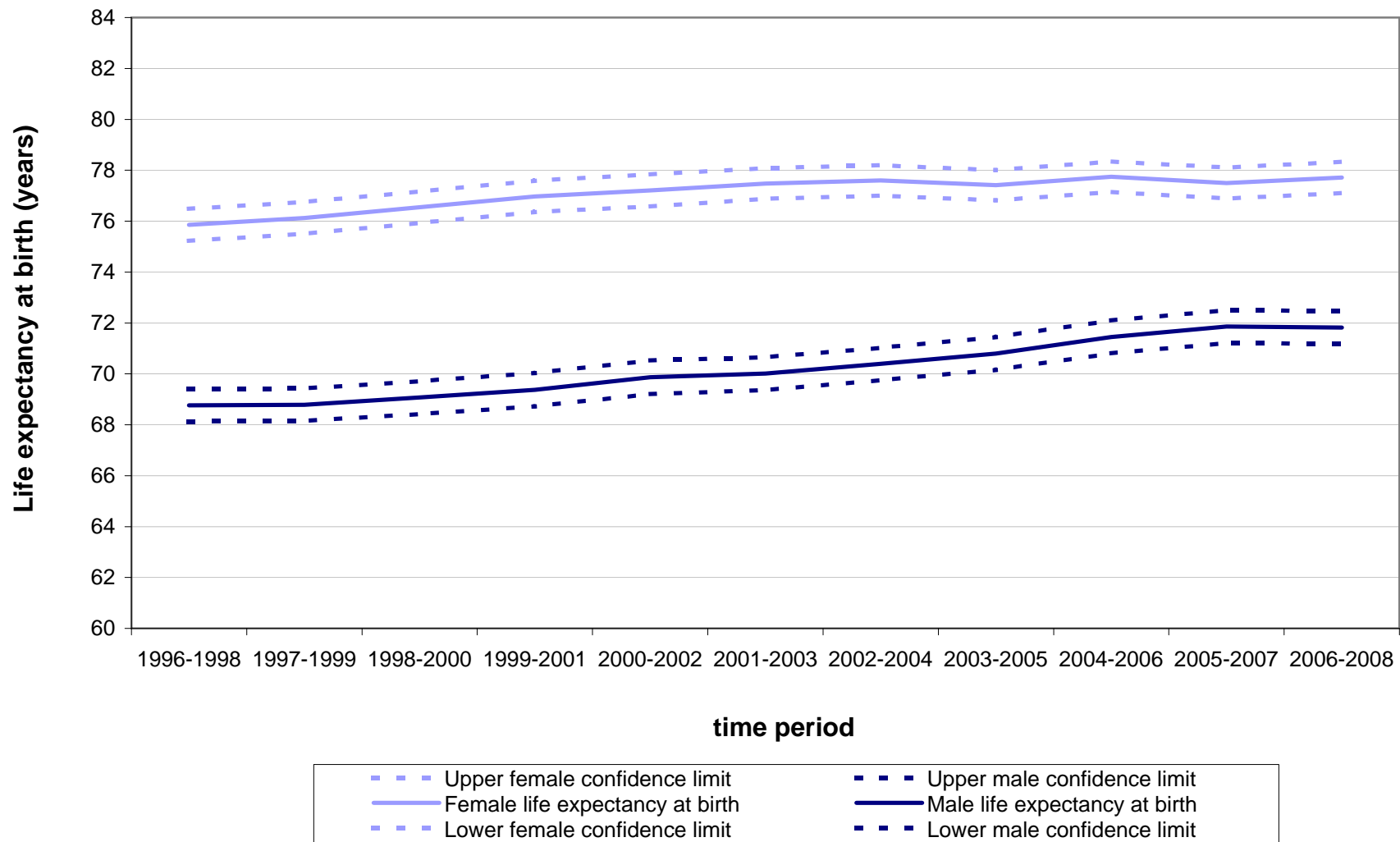
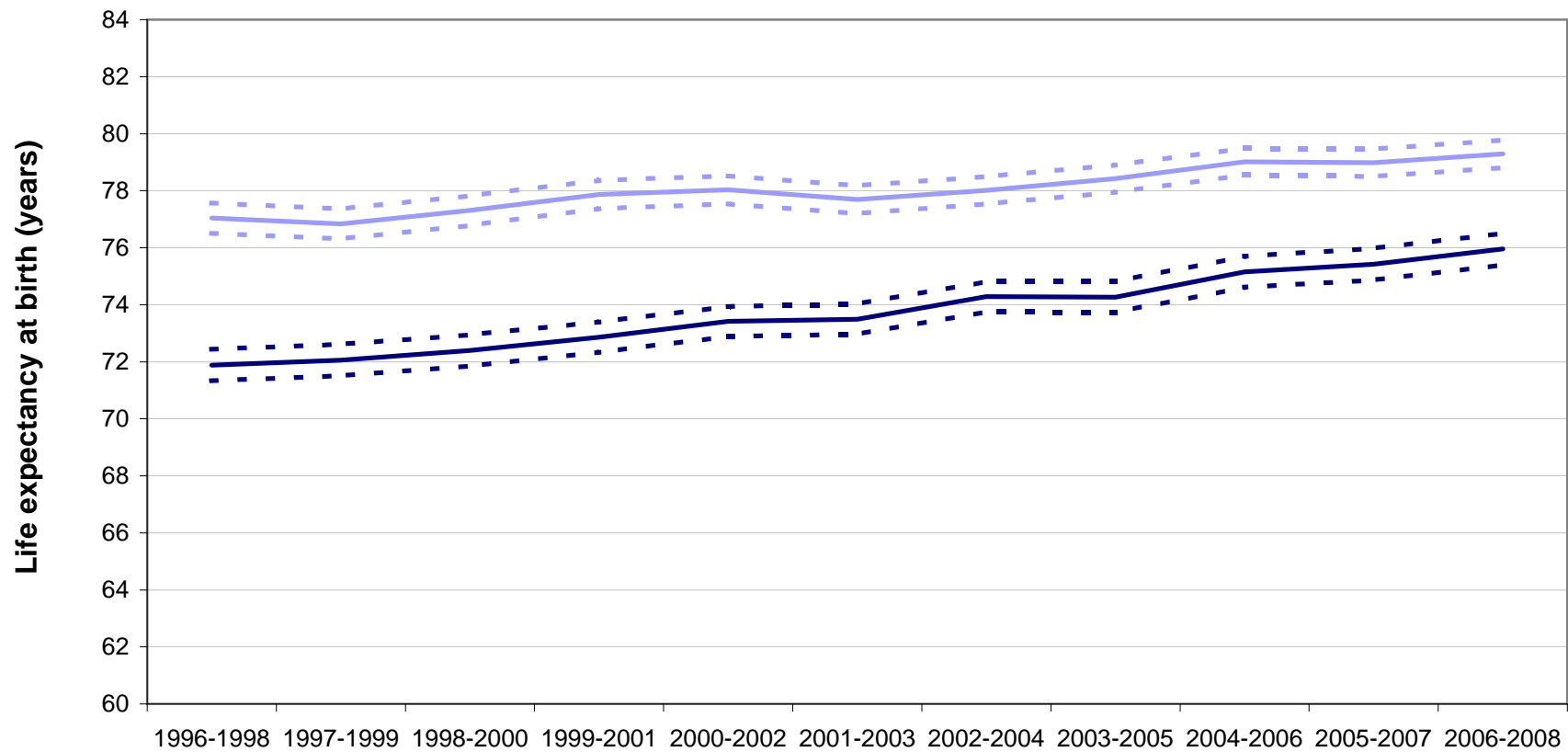


Figure 4 Life expectancy at birth, with 95% lower and upper confidence limits, 1996-1998 to 2006-2008 for males and females in:

West Lothian Community Health

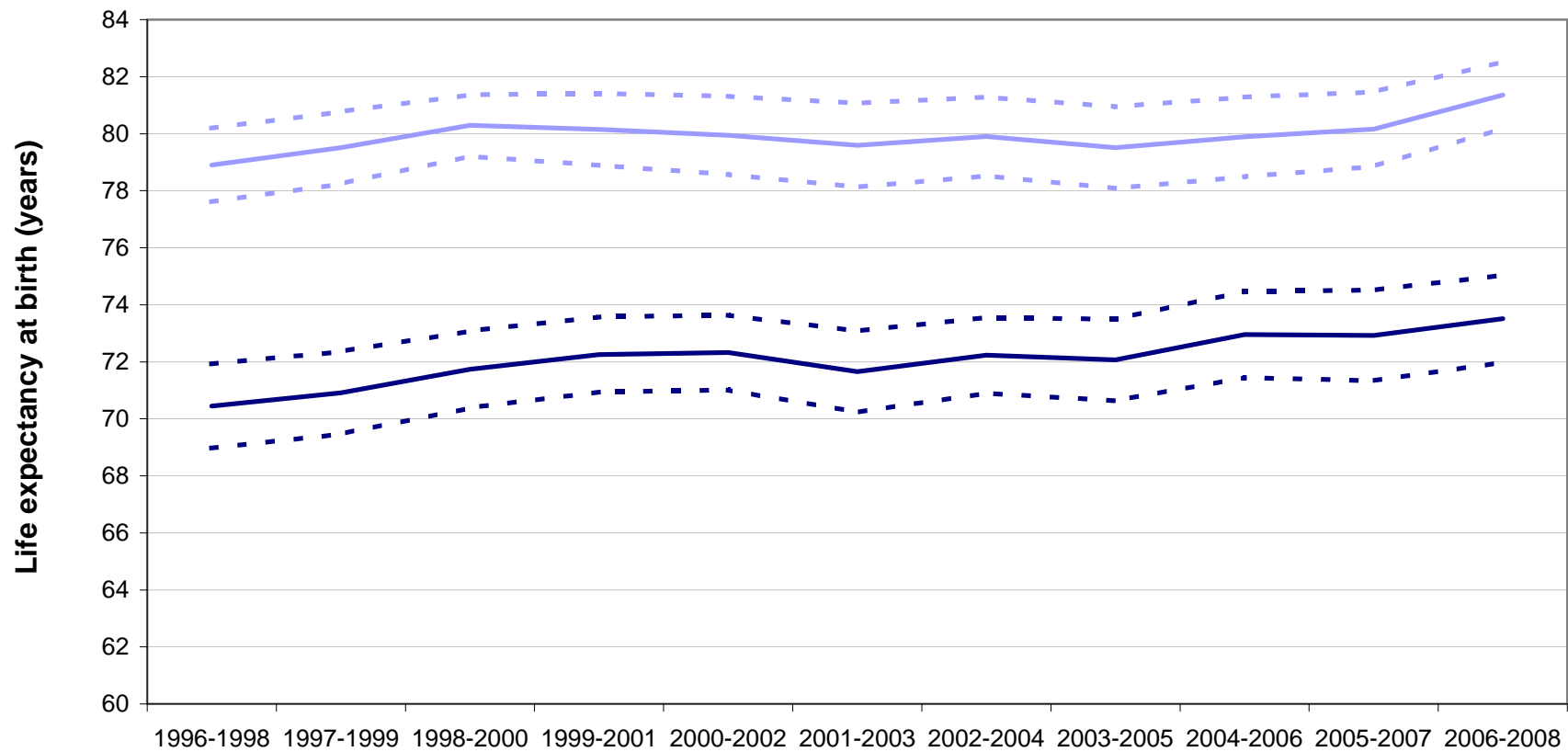


time period



Figure 4 Life expectancy at birth, with 95% lower and upper confidence limits, 1996-1998 to 2006-2008 for males and females in:

Western Isles Community Health



time period

