

NATIONAL RECORDS OF SCOTLAND

preserving the past; recording the present; informing the future

Life Expectancy for areas in Scotland, 2008-2010

Published on 19 October 2011

A National Statistics publication for Scotland

National Statistics are produced to high professional standards set out in the National Statistics Code of Practice. They undergo regular quality assurance reviews to ensure that they meet customer needs.



These statistics were recently assessed by the UK Statistics Authority and are designated as National Statistics subject to meeting the requirements set out in the [Assessment of Compliance with the Code of Practice for Official Statistics](#) report, available on the UK Statistics Authority's website.

NATIONAL RECORDS OF SCOTLAND joins together



General Register Office
for
SCOTLAND
information about Scotland's people



THE NATIONAL
ARCHIVES OF SCOTLAND

Contents

Main points	5
1. Background	7
2. Background methodology	8
2.1 Life expectancy at birth.....	8
2.2 Accuracy of results	8
3. Life expectancy in Scotland, the UK and Europe.....	10
4. Life expectancy at birth, 2008-2010, geographical and other variations.....	13
4.1 Council areas.....	13
4.2 NHS Board areas	14
4.3 Community Health Partnership areas.....	14
4.4 Urban Rural 6-fold classification	15
4.5 Scottish Index of Multiple Deprivation 2009 decile	16
5. Life expectancy at birth, comparisons over time.....	18
5.1 Council areas.....	18
5.2 NHS Board areas	20
5.3 Community Health Partnership areas.....	22
6. Life expectancy at age 65, 2008-2010, geographical variations	23
6.1 Council areas.....	23
6.2 Health Board areas.....	23
6.3 Community Health Partnership areas.....	23
7. Further information	24
7.1 Life expectancy at birth.....	24
7.2 Life expectancy for areas in Scotland.....	24
7.3 Healthy Life Expectancy	25
7.4 Other data available from the National Records of Scotland	25
8. Notes and definitions	26
8.1 NHS Board areas	26
8.2 Community Health Partnerships	26
8.3 Urban and Rural areas	27
8.4 Deprivation areas	27
Notes on statistical publications	47

List of tables

Table 1	Abridged life table, by sex, age and Council area, Scotland, 2008-2010	28
Table 2	Abridged life table, by sex, age and NHS Board area, Scotland, 2008-2010	32
Table 3	Abridged life table, by sex, age and Community Health Partnership, Scotland, 2008-2010.....	34
Table 4	Abridged life table, by sex, age and 2010 Urban Rural 6-fold classification, Scotland, 2008-2010.....	37
Table 5	Abridged life table, by sex, age and SIMD2009 deprivation decile, Scotland, 2008-2010.....	39
Table 6	Life expectancy at birth in Scotland, 2008-2010, by Council and NHS Board area and comparisons with 1998-2000 and 2003-2005 (Males)	41
Table 7	Life expectancy at birth in Scotland, 2008-2010, by Council and NHS Board area and comparisons with 1998-2000 and 2003-2005 (Females)	42
Table 8	Life expectancy at birth in Scotland, 2008-2010, by Community Health Partnership area and comparisons with 1998-2000 and 2003-2005 (Males)	43
Table 9	Life expectancy at birth in Scotland, 2008-2010, by Community Health Partnership area and comparisons with 1998-2000 and 2003-2005 (Females).....	44
Table 10	Life expectancy at age 65 in Scotland, 2008-2010, by Council and NHS Board area, (Males and Females)	45
Table 11	Life expectancy at age 65 in Scotland, 2008-2010, by Community Health Partnership area, (Males and Females).....	46

List of figures

Figure 1	Life expectancy at birth, Scotland, 1981-1983 to 2008-2010	10
Figure 2a	Life expectancy at birth in selected countries, 1997-1999 to 2008-2010, Males	11
Figure 2b	Life expectancy at birth in selected countries, 1997-1999 to 2008-2010, Females	11
Figure 3	Life expectancy at birth, 95% confidence intervals for Council areas, 2008-2010 (Males and Females)	13
Figure 4	Life expectancy at birth, 95% confidence intervals for NHS Board areas, 2008-2010 (Males and Females)	14
Figure 5	Life Expectancy at birth, 95% confidence intervals for Scottish Community Health Partnership Areas, 2008-2010 (Males and Females)	15
Figure 6	Life expectancy at birth, 95% confidence intervals for Urban/Rural classification, 2008-2010 (Males and Females)	16
Figure 7	Life expectancy at birth, 95% confidence intervals for Scottish Index of Multiple Deprivation 2009 Deciles, 2008-2010 (Males and Females).....	17
Figure 8	Life expectancy at birth in Scotland, 1991-1993 to 2008-2010, by Council area, Males	19
Figure 9	Life expectancy at birth in Scotland, 1991-1993 to 2008-2010, by Council area, Females	20
Figure 10	Life expectancy at birth in Scotland, 1981-1983 to 2008-2010, by NHS Board area, Males	21
Figure 11	Life expectancy at birth in Scotland, 1981-1983 to 2008-2010, by NHS Board area, Females	21

Main points

The key points in this report for 2008-2010 are:

At birth

- Life expectancy in Scotland was 75.8 years for males and 80.4 years for females but with considerable variation between areas.
- Male and female life expectancy was highest in East Dunbartonshire Council area and lowest in Glasgow City Council area. Males in East Dunbartonshire can expect to live for 79.4 years, nearly 8 years longer than in Glasgow City (71.6 years). Females in East Dunbartonshire can expect to live for 82.7 years, nearly 5 years longer than in Glasgow City (78.0 years).
- The NHS Board area with the highest male life expectancy was Borders (77.5 years), with female life expectancy being highest in Western Isles (82.0 years); the NHS Board area with the lowest male and female life expectancy was Greater Glasgow and Clyde (73.6 years for males and 79.2 years for females).
- The Community Health Partnership area where male and female life expectancy was highest was East Dunbartonshire at 79.4 years and 82.7 years respectively. Glasgow City had the lowest life expectancy for males (71.7 years) and females (78.0 years).
- Life expectancy at birth was highest for males in accessible rural areas (78.3 years), where they can expect to live nearly 4 years longer than males in large urban areas, who have a life expectancy at birth of 74.5 years. Female life expectancy at birth was highest in remote rural areas (82.2 years), 2.4 years more than in large urban areas, where it was lowest (79.8 years).
- Life expectancy increases as deprivation decreases, with life expectancy at birth for males in the 10 per cent least deprived areas of Scotland (81.4 years) being expected to live for 13.2 years more than males in the 10 per cent most deprived areas (68.2 years). Females in the 10 per cent least deprived areas of Scotland can expect to live for 84.6 years, nearly 9 years longer than those in the 10 per cent most deprived areas (75.7 years).

Compared with the UK and Europe

- Scottish males and females have the lowest life expectancy at birth in the United Kingdom (UK). Male life expectancy is 2.4 years lower than the UK average and female life expectancy is 1.9 years lower.
- In Scotland, males and females can expect to live shorter lives (by 2.7 years and 2.1 years respectively) than in England, where male and female life expectancy is the highest in the UK.
- Amongst European Union (EU) countries, male life expectancy was highest in Sweden (79.4 years), 3.6 years higher than in Scotland. Female life expectancy was highest in France (85.0 years), 4.6 years higher than in Scotland.
- Although male and female life expectancy continues to improve in Scotland, the gap between Scottish and English life expectancy has widened since 1997-1999, by 0.3 years for males and by 0.4 years for females.

Changes over time

- Male and female life expectancy has continued to rise across Scotland.
- The biggest improvements in male life expectancy since 1998-2000 have been in Argyll and Bute Council area (3.9 years), Highland NHS Board area (3.7 years) and Mid Highland Community Health Partnership area (5.0 years).
- The biggest improvements in female life expectancy since 1998-2000 have been in City of Edinburgh Council area, increasing by 2.9 years, Lothian Health Board area, increasing by 2.6 years, and Edinburgh Community Health Partnership area, increasing by 2.9 years.

At age 65

- Males in Scotland could expect to live for a further 16.8 years and females a further 19.3 years.
- East Dunbartonshire Council area had the highest male life expectancy at age 65 (18.9 years), 4.6 years higher than in Glasgow City, where it was lowest at 14.3 years. Female life expectancy at age 65 was also highest in East Dunbartonshire (21.1 years) and lowest in Glasgow City (17.8 years), a difference of 3.3 years.
- The NHS Board areas with the highest male and female life expectancy at age 65 were Tayside (17.8 years), and Western Isles (20.9 years). It was lowest for males in Greater Glasgow & Clyde (15.5 years) and for females in Lanarkshire (18.5 years).
- Male and female life expectancy at age 65 is highest in East Dunbartonshire Community Health Partnership area at 18.9 years and 21.1 years respectively. Males and females in Glasgow City Community Health Partnership have the lowest life expectancy at age 65, 14.3 years and 17.9 years respectively.

1. Background

- 1.1 This paper summarises the Registrar General for Scotland's life expectancy figures for the years 2008-2010. It combines the previously separate 'Life Expectancy for Administrative Areas within Scotland' and Life Expectancy in Special Areas within Scotland' publications. This was proposed during the consultation on the National Records of Scotland (NRS) formerly General Register Office for Scotland (GROS) Demography Statistical Work Programme carried out earlier in 2011. [Table 6](#), [Table 7](#), [Table 8](#) and [Table 9](#) are new and compare results with those from five years and ten years ago. [Figure 8](#), [Figure 9](#), [Figure 10](#) and [Figure 11](#) are also new.
- 1.2 This paper reports on the 32 Council areas in Scotland, the 14 NHS Board areas in existence since 1 April 2006 (figures for NHS Board areas prior to this date are available on request) and the 36 Community Health Partnership (CHP) organisations. Analysis of urban and rural areas, as defined by the Scottish Government's 6-fold Urban Rural Classification version 2009-2010, and deprivation areas as defined by the Scottish Index of Multiple Deprivation (SIMD) 2009 is also included., along with comparisons between the estimates for 2008-2010 and those of previous three-year periods. Further information on the geographical areas used in this publication can be found in [Section 8](#).
- 1.3 The estimates for 2008-2010, given in [Table 6](#), [Table 7](#), [Table 8](#), [Table 9](#), [Table 10](#) and [Table 11](#) have been ranked for ease of presentation. For Council areas, this means that '1' is the area with the highest life expectancy and '32' the lowest. Similarly, NHS Board areas are ranked 1 to 14 and Community Health Partnerships are ranked 1 to 36.
- 1.4 Life expectancy at birth provides a useful summary measure of mortality rates actually experienced over a given period. It also provides an objective means of comparing trends in mortality, over time, between areas of a country and with other countries. This is of use in monitoring and investigating health inequality issues across Scotland and in setting public health targets, particularly when used in conjunction with the SIMD. The Scottish Government currently has a high level target to match European population growth over a 10 year period, supported by increased healthy life expectancy. It also aims to increase healthy life expectancy at birth in the most deprived areas and to reduce mortality from Coronary Heart Disease (CHD) among the under-75s in deprived areas. Healthy life expectancy is derived by combining estimates of life expectancy with survey data on self-assessed health ([Section 7.3](#)).
- 1.5 The figures in this publication may be revised if there is a large impact on the figures caused by revising population estimates following the 2011 Census.

2. Background methodology

2.1 Life expectancy at birth

- 2.1.1 The figures quoted in this publication are a three year average. They are produced by aggregating deaths and population data for the three year period. Three years of data are needed to provide large enough numbers to ensure that the figures published in this report are sufficiently robust.
- 2.1.2 The figures are all period life expectancies. Period life expectancies are calculated using age specific mortality rates for a given period. They do not make allowance for any actual or projected future changes in mortality after that period. This means that life expectancy at birth for a given time period and area is an estimate of the average number of years a new born baby would survive if he/she experienced the particular area's age specific mortality rates for that time period throughout his/her life. The figure reflects mortality among those living in the area in each period, rather than mortality among those born in each area. Life expectancy at birth is not simply the number of years a baby born in the area during the three year period is expected to live (although the term 'can expect to live' is used throughout this publication for ease of reading), both because death rates are likely to change in the future and because many of the newborns may live elsewhere for at least some part of their lives.
- 2.1.3 The abridged life tables in [Table 1](#), [Table 2](#), [Table 3](#), [Table 4](#) and [Table 5](#) are constructed from the estimated populations in 2008, 2009 and 2010 and the total number of deaths registered in these years. The column headed l_x shows the numbers who would survive to the exact age of x out of 100,000 persons who, from birth, were subject to the mortality probabilities indicated by the death records for 2008-2010. The column headed e_x^0 shows the expectation of life – the average number of years of life left to persons aged exactly x who are subject to the 2008-2010 mortality probabilities from age x onwards. For example, in [Table 1](#), for Glasgow City, 73.1 per cent of the male population and 84.5 per cent of the female population could be expected to survive to age 65. In [Table 2](#), a male aged 65 in Fife NHS Board could be expected to live on average another 17.1 years, and a female aged 65 could be expected to live on average another 19.7 years.

2.2 Accuracy of results

- 2.2.1 Life expectancy is an estimate which is subject to a margin of error. The accuracy of the results can be indicated by calculating a confidence interval within which the true underlying life expectancy would be expected to lie. In this publication, confidence intervals are set at the 95 per cent level, with the true underlying life expectancy being found within its upper and lower limits with 95 per cent probability. Life expectancy for an area can usually be said to be significantly different from another area if the 95 per cent confidence intervals do not overlap. Also, errors in the population estimates used for calculation purposes must be considered.

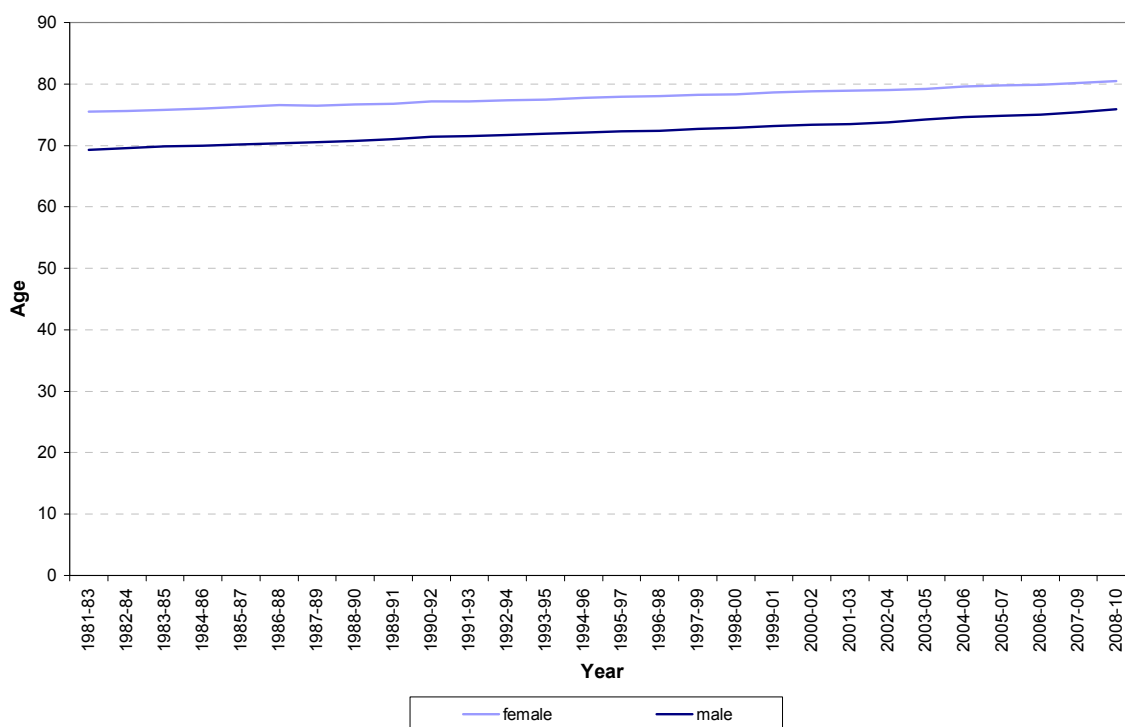
- 2.2.2 The 95 per cent confidence intervals for life expectancy at birth are illustrated in [Figure 3](#), [Figure 4](#), [Figure 5](#), [Figure 6](#) and [Figure 7](#) for Council, NHS Board and Community Health Partnership areas within Scotland as well as for the Urban/Rural classification and Deprivation deciles.
- 2.2.3 There is no simple ‘rule of thumb’ for the size of confidence intervals, although it largely depends upon the size of the population: areas with small populations tend to have wider confidence intervals. It is also worth noting that life expectancy results in these areas can be affected by the random variation in the annual number of deaths. This means that estimated life expectancy can vary from year to year. For example, in [Table 6](#), [Table 7](#), [Table 8](#) and [Table 9](#), changes in rank may simply be due to random variation from year to year in the population and number of deaths (particularly in the smaller areas such as Orkney and Shetland) as opposed to a change in the long term trend life expectancy. Rankings are usually only significantly different if the confidence intervals do not overlap e.g. in [Figure 4](#), life expectancy at birth for females in Orkney is only significantly different from that of females in Greater Glasgow and Clyde and Lanarkshire; all other Health Boards have overlapping confidence intervals and therefore do not have significantly different female life expectancies.
- 2.2.4 A description of the methods used to calculate life expectancy for different geographical areas and other classifications within Scotland can be found in the [Life Expectancy for Scotland: Methodology](#) Guide on the NRS/GROS website.

More information about the methods used to calculate the standard errors and confidence intervals used in this report can be found in the Office for National Statistics publication, number 33 in the GSS Methodology Series. The report details the research undertaken by the Office for National Statistics (ONS) to compare methodologies for calculating life expectancy figures and confidence intervals. It can be found on the [ONS](#) website.

3. Life expectancy in Scotland, the UK and Europe

- 3.1 Figure 1 shows that the expectation of life at birth in Scotland¹ has shown constant improvement over the last 27 years. It has increased from 69.3 years for males born in the period 1981-1983 to 75.8 years for those born in 2008-2010, an increase of 6.5 years. For females, life expectancy has increased from 75.5 years for those born in the period 1981-1983 to 80.4 years for those born in 2008-2010, an increase of 4.9 years.

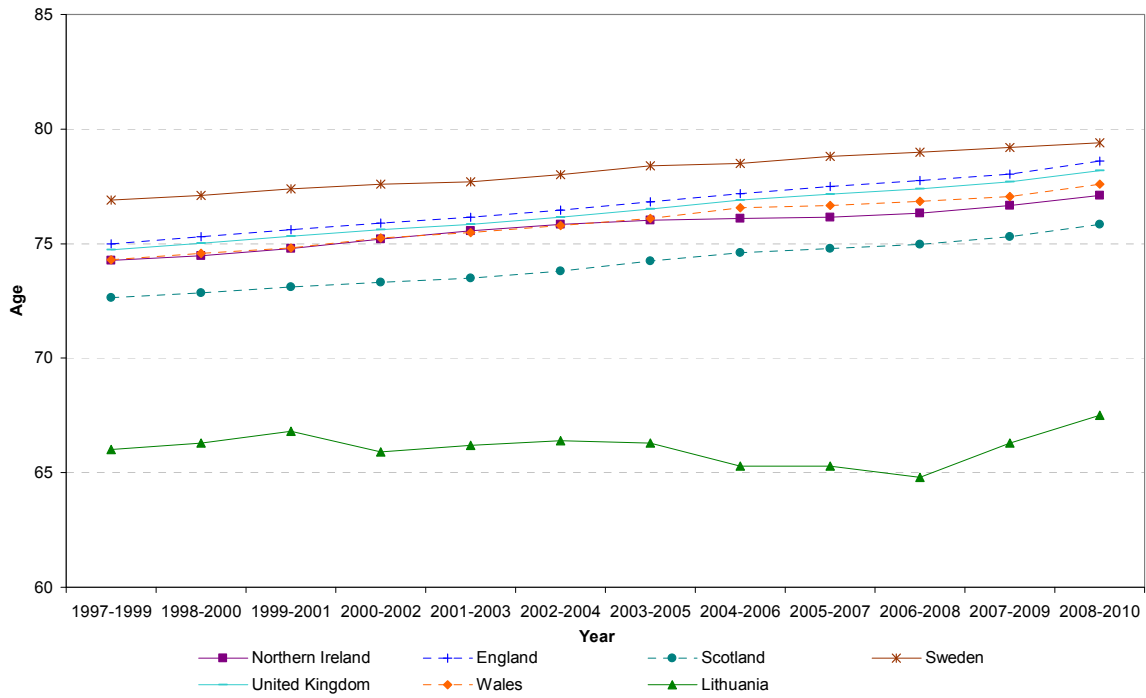
Figure 1 Life expectancy at birth, Scotland¹, 1981-1983 to 2008-2010



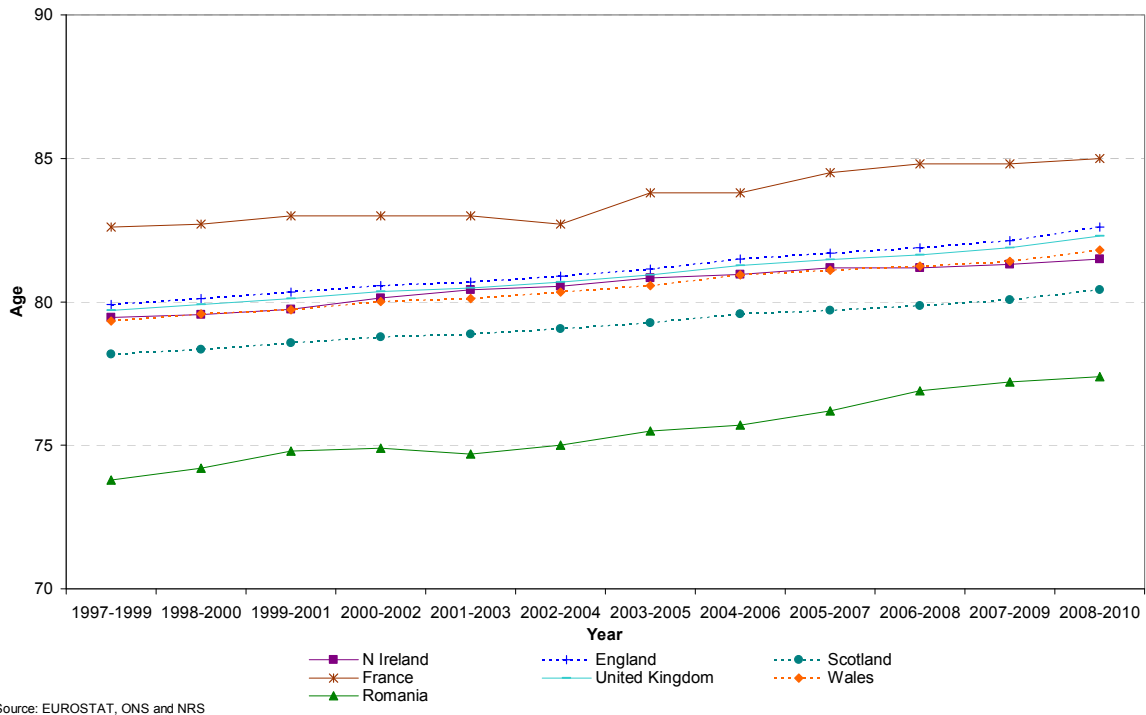
- 3.2 Figure 1 also shows that the gap between male and female life expectancy at birth has decreased from 6.2 years in 1981-1983 to 4.6 years in 2008-2010 and has been closing in each period since 2000-2002.
- 3.3 The improvement in life expectancy at birth for males and females in Scotland since 1997-1999 can be seen in [Figure 2a](#) (males) and [Figure 2b](#) (females). Comparisons are also given with life expectancy in the United Kingdom, countries within the UK and the countries that typically have the highest and lowest life expectancy in the European Union (EU) (Sweden and Lithuania for males and France and Romania for females).
- 3.4 Although male and female life expectancy continues to increase in Scotland, it is still below the UK average, which is 78.2 years for males and 82.3 years for females. The gap between UK and Scottish life expectancy is now wider than in 1997-1999, by 0.3 years for males and by 0.4 years for females.

¹ Life expectancy figures for Scotland and the other UK constituent countries are also produced by the Office for National Statistics (ONS) using complete life tables based on single years of age. Figures in this part of the publication are from abridged life tables based on grouped years. For more details go to [Section 7.1](#).

**Figure 2a Life expectancy at birth in selected countries, 1997-1999 to 2008-2010
Males**



**Figure 2b Life expectancy at birth in selected countries, 1997-1999 to 2008-2010
Females**



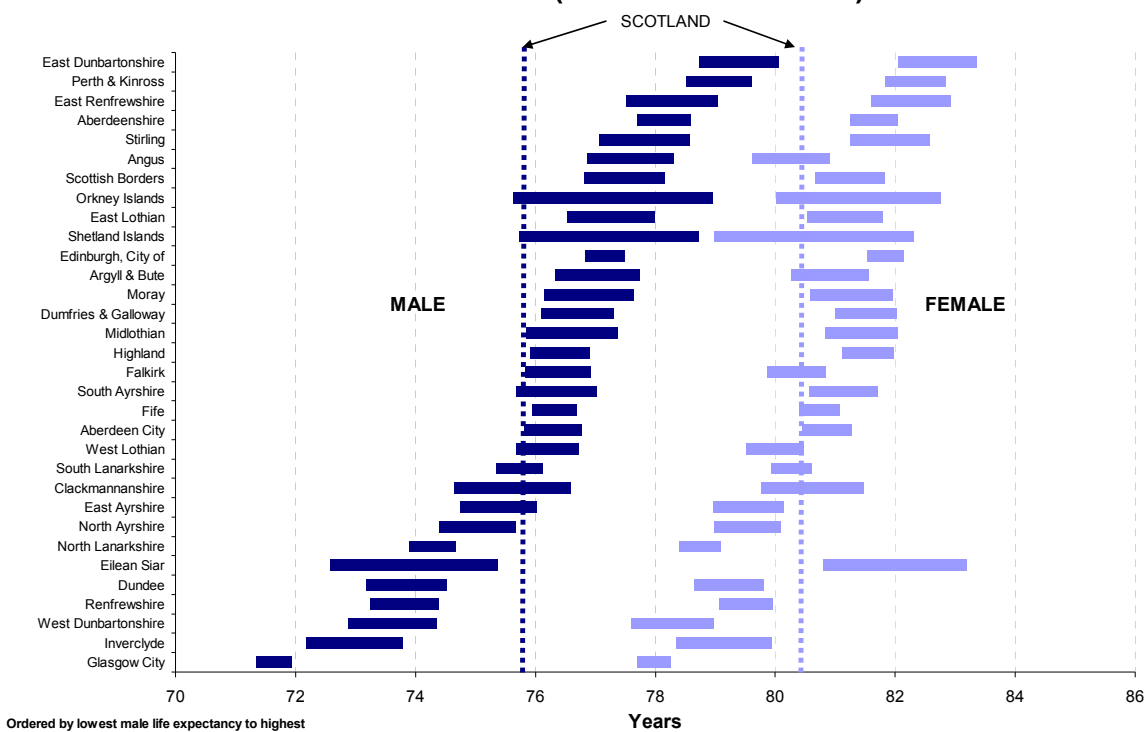
- 3.5 Scottish male life expectancy has been consistently lower than that of males in England, Northern Ireland and Wales, although the gap has varied over time. Males in England, Wales and Northern Ireland can expect to live longer than those in Scotland by 2.8 years, 1.8 years and 1.3 years respectively. In comparison to 1997-1999, the gap with England has widened by 0.4 years and the gap with Wales has widened by 0.1 years. Only the gap with Northern Ireland has narrowed, by 0.4 years.
- 3.6 The pattern is similar for female life expectancy in Scotland. Scottish women can expect to live 2.2 years fewer than women in England, 1.4 years fewer than women in Wales and 1.1 years fewer than women in Northern Ireland. Over time, only the comparison with Northern Ireland has shown improvement, narrowing by 0.2 years since 1997-1999. Over the same period, the gap has widened by 0.5 years compared with England and by 0.3 years compared with Wales.
- 3.7 Male life expectancy in Sweden at 79.4 years is the highest among the EU's 27 member states, 3.6 years higher than in Scotland. In Lithuania, male life expectancy is 67.5 years, the lowest in the EU and 8.3 years lower than in Scotland. Since 1997-1999 male life expectancy has improved, reducing the gap with Sweden and increasing the gap with Lithuania.
- 3.8 France has the highest female life expectancy in the EU at 85.0 years, 4.6 years higher than in Scotland. In Romania female life expectancy is 77.4 years, the lowest in the EU. Female life expectancy in Scotland has not improved as much as in France or Romania. The gap in life expectancy between French and Scottish women is 0.2 years wider than in 1997-1999 and the gap between Scottish and Romanian women is 1.4 years narrower than in 1997-1999.

4. Life expectancy at birth, 2008-2010, geographical and other variations

4.1 Council areas

4.1.1 Table 1 shows life expectancy at birth and at five-year intervals in Scotland and Council areas for 2008-2010. Table 6 and Table 7 show the life expectancy at birth and rank for Council areas, along with comparisons with five and ten years ago. In Figure 3 life expectancy at birth in 2008-2010 is shown with the associated 95 per cent confidence intervals for each of the Council areas. Life expectancy for an area can be said to be significantly different from another area if the 95 per cent confidence intervals do not overlap.

Figure 3 Life expectancy at birth, 95% confidence intervals for Council areas, 2008- 2010 (Males and Females)



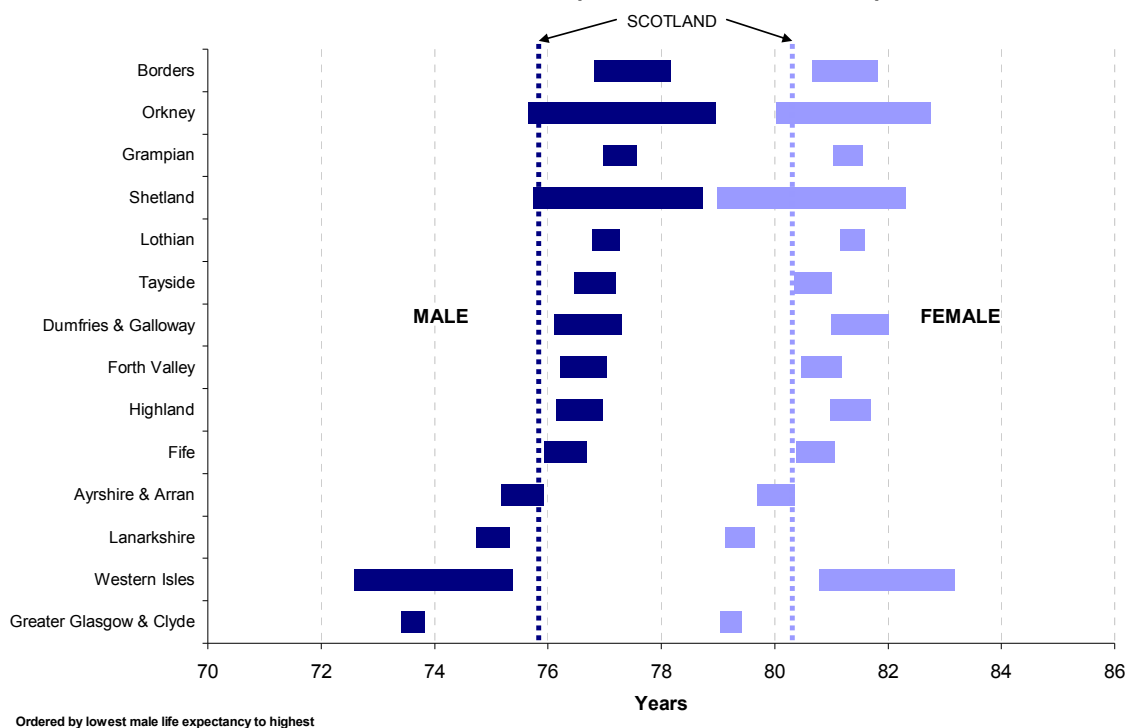
4.1.2 For males, the Council area with the lowest life expectancy was Glasgow City (71.6 years) and the Council area with the highest life expectancy was East Dunbartonshire (79.4 years), a difference of 7.8 years between highest and lowest.

4.1.3 For females, Glasgow City had the lowest life expectancy (78.0 years) and the highest life expectancy was in East Dunbartonshire (82.7 years), a difference of 4.7 years.

4.2 NHS Board areas

4.2.1 [Table 2](#) shows life expectancy at birth and five-year intervals in Scotland and NHS Board areas for 2008-2010. [Table 6](#) and [Table 7](#) show the life expectancy at birth and rank for NHS Board areas, along with comparisons with five and ten years ago. Figure 4 shows life expectancy at birth in 2008-2010, along with 95 per cent confidence intervals for each of the NHS Board areas.

Figure 4 Life expectancy at birth, 95% confidence intervals for NHS Board areas, 2008-2010 (Males and Females)



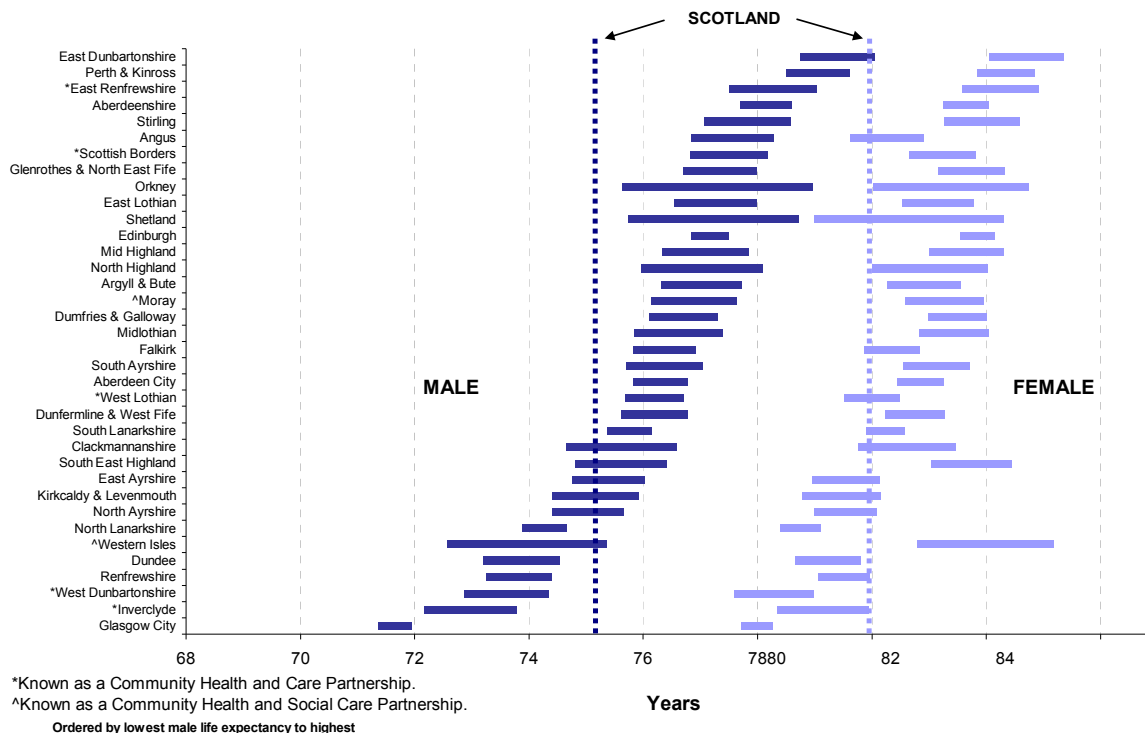
4.2.2 The NHS Board area with the highest life expectancy was Borders for males (77.5 years) and Western Isles for females (82.0 years).

4.2.3 The Greater Glasgow & Clyde NHS Board area was the area with the lowest life expectancy, both for males (73.6 years) and females (79.2 years).

4.3 Community Health Partnership areas

4.3.1 [Table 3](#) shows life expectancy at birth and five-year intervals in Scotland and Community Health Partnership (CHP) areas for 2008-2010. [Table 8](#) and [Table 9](#) show the life expectancy at birth and rank for CHP areas, along with comparisons with five and ten years ago. [Figure 5](#) shows life expectancy at birth along with the 95 per cent confidence intervals for each CHP.

Figure 5 Life Expectancy at birth, 95% confidence intervals for Scottish Community Health Partnership Areas, 2008-2010 (Males and Females)



4.3.2 The CHP with the highest male life expectancy at birth was East Dunbartonshire where males could expect to live for 79.4 years. This is 7.7 years longer than in Glasgow City, where male life expectancy was lowest at 71.7 years.

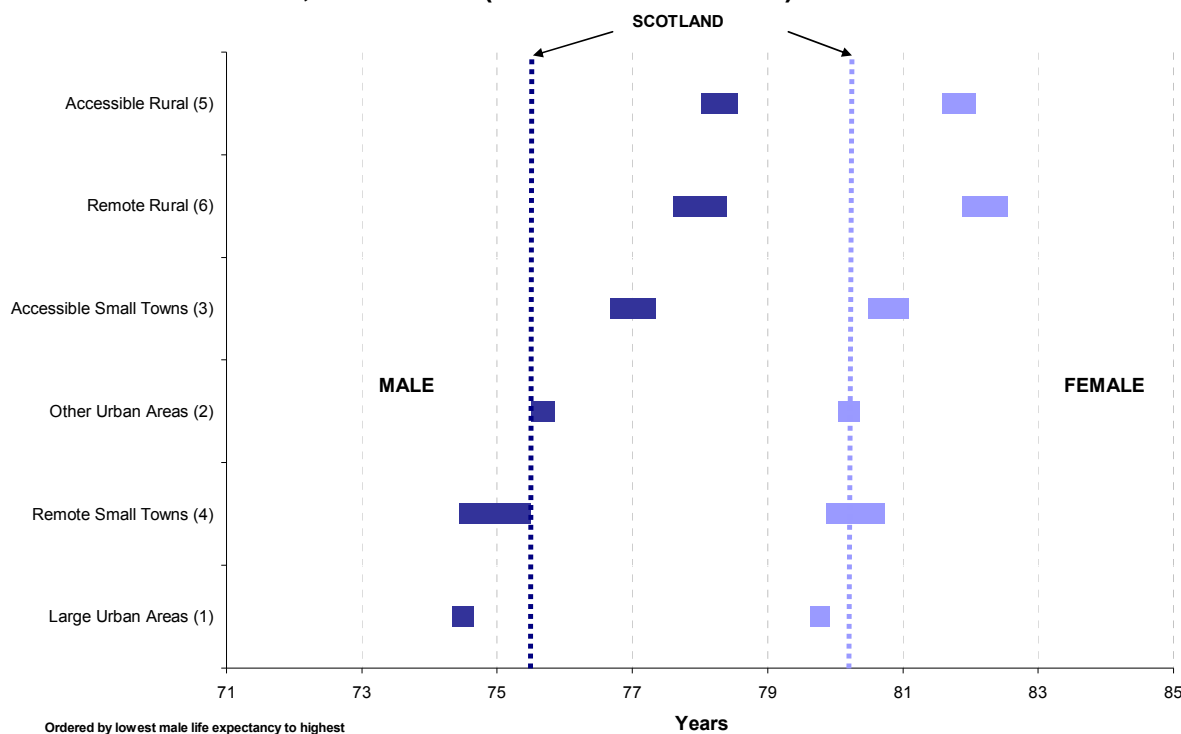
4.3.3 The CHP with the highest life expectancy at birth for females was also East Dunbartonshire, where females could expect to live 82.7 years, 4.7 years longer than in Glasgow City, the CHP with the lowest life expectancy (78.0 years).

4.3.4 The largest gap between male and female life expectancy at birth was in Western Isles Community Health and Social Care Partnership, where females (82.0 years) could expect to live 8.0 years longer than males (74.0 years).

4.4 Urban Rural 6-fold classification

4.4.1 [Table 4](#) shows life expectancy at birth and five-year intervals in Scotland for each area in the 2009 Urban/Rural 6-fold classification. [Figure 6](#) shows life expectancy at birth along with 95 per cent confidence intervals for these areas.

Figure 6 Life expectancy at birth, 95% confidence intervals for Urban/Rural classification, 2008-2010 (Males and Females)



4.4.2 Male life expectancy at birth is highest in Accessible Rural areas at 78.3 years, 3.8 years longer than in Large Urban areas, where male life expectancy is the lowest (74.5 years).

4.4.3 The gap between highest and lowest female life expectancy at birth was not as wide. It was highest in Remote Rural areas (82.2 years) and lowest in Large Urban areas (79.8 years), a gap of 2.4 years.

4.4.4 The biggest gap between male and female life expectancy is in Large Urban areas and in Remote Small Towns. In both these areas, females can expect to live 5.3 years longer than males.

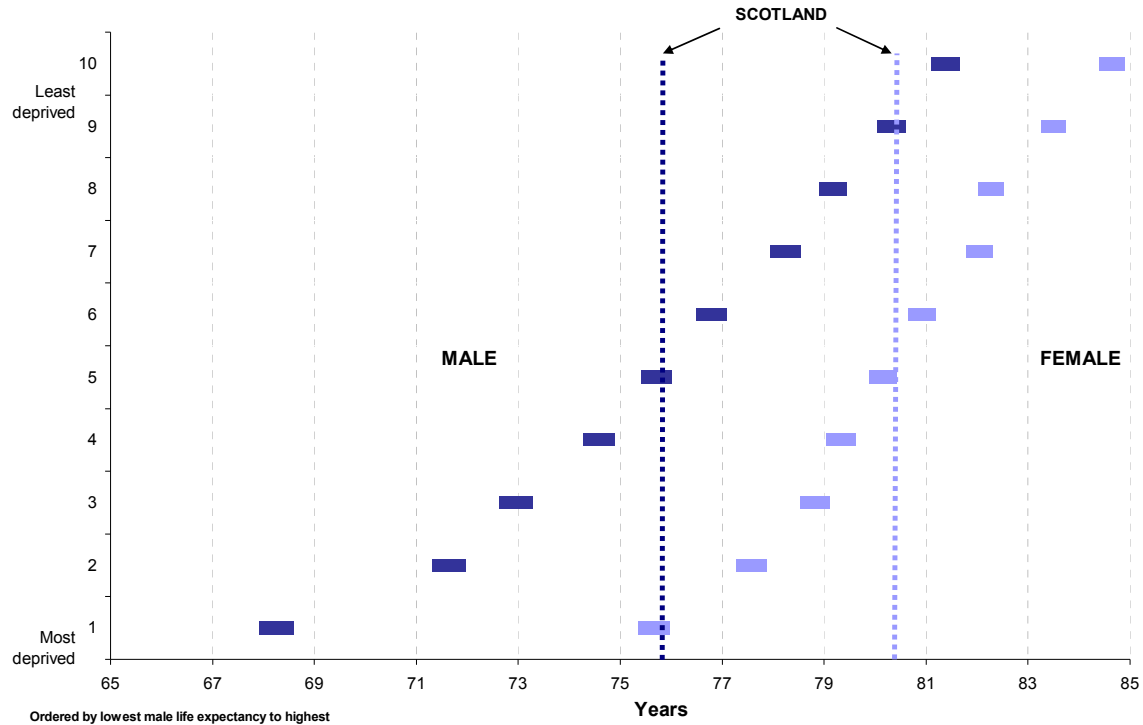
4.4.5 Males and females in Remote Rural areas, Accessible Rural areas and Accessible Small Towns all have a higher life expectancy than the average figure for Scotland.

4.5 Scottish Index of Multiple Deprivation 2009 decile

4.5.1 Life expectancy at birth and at five-year intervals for each deprivation decile² is shown in Table 5. Figure 7 shows 95 per cent confidence intervals for male and female life expectancy at birth in each decile. As explained in Section 8.4, the Scottish Index of Multiple Deprivation (SIMD) measures deprivation and not affluence, therefore the life expectancy figures presented in this publication should not be translated as 'life expectancy of the rich versus that of the poor'.

² Deciles split the data into 10 groups. Here, decile 1 has the 651 most deprived data zones, decile 2 the next 650 data zones according to deprivation ranking, and so on, up to decile 10 which has the 650 least deprived data zones.

Figure 7 Life expectancy at birth, 95% confidence intervals for Scottish Index of Multiple Deprivation 2009 Deciles, 2008-2010 (Males and Females)



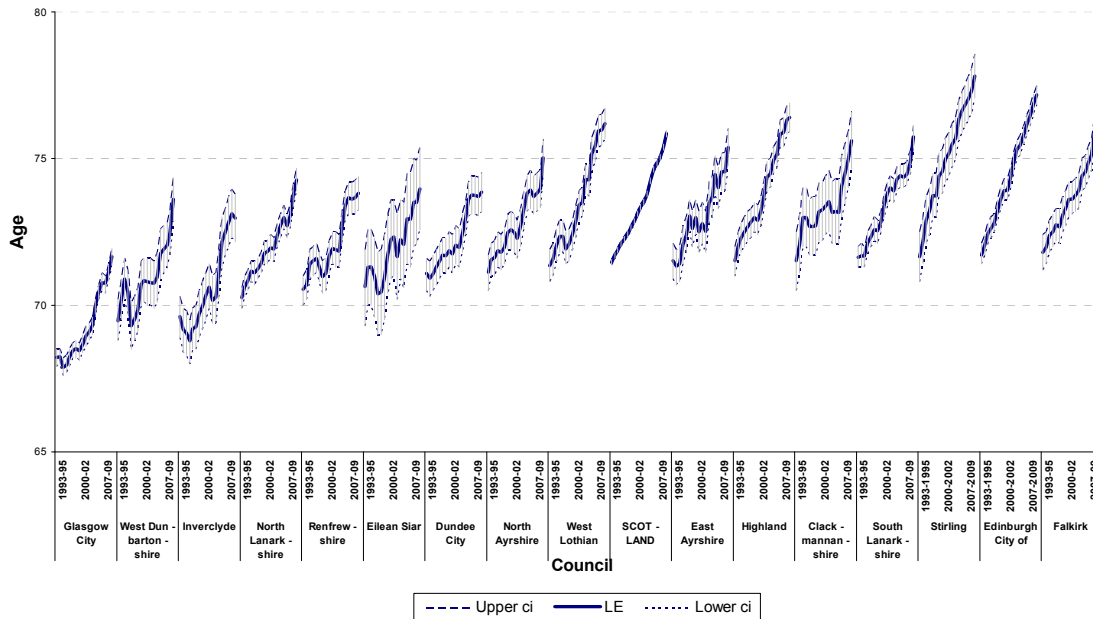
- 4.5.2 Male and female life expectancy increases as the level of deprivation decreases. Males in the 10 per cent least deprived areas of Scotland (decile 10) have a life expectancy at birth of 81.4 years, 13.2 years longer than in the 10 per cent most deprived areas, where male life expectancy is 68.2 years. Females in the 10 per cent least deprived areas can expect to live 84.6 years, 8.9 years longer than those in the 10 per cent most deprived areas, who can expect to live 75.7 years.
- 4.5.3 The gap between male and female life expectancy tends to decrease as the level of deprivation decreases. Female life expectancy is higher by 7.5 years in the 10 per cent most deprived areas and by 3.2 years in the 10 per cent least deprived areas. The gap is at its narrowest in decile 8 (3.1 years).

5. Life expectancy at birth, comparisons over time

5.1 Council areas

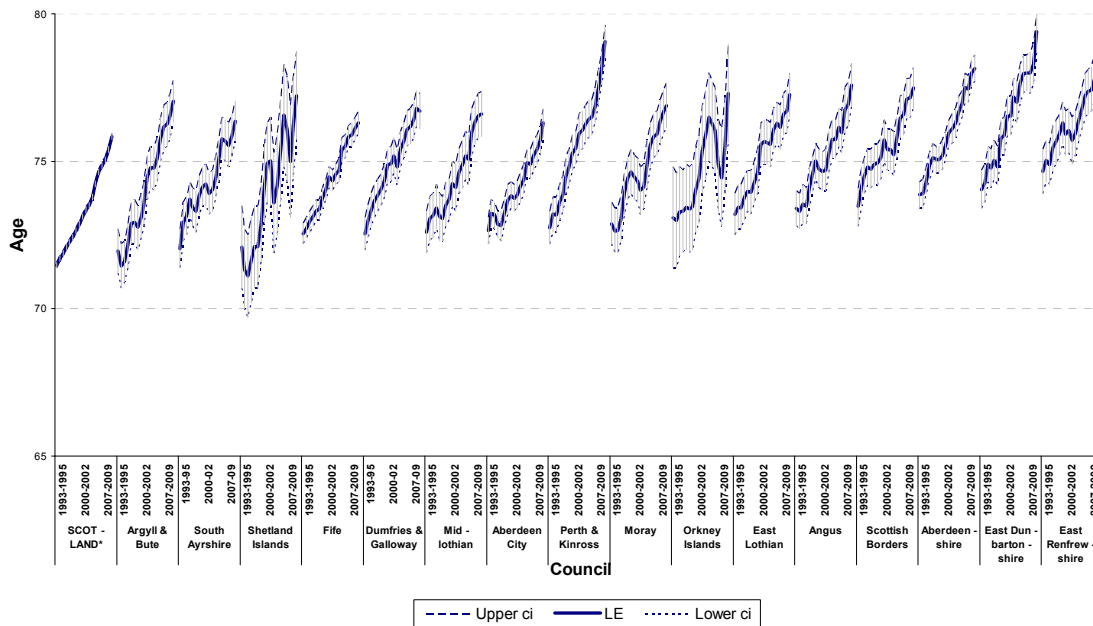
- 5.1.1 [Figure 8](#) shows how male life expectancy within Council areas has changed since 1991-1993, with Council areas ordered from left to right by the lowest to highest life expectancy in 1991-1993.
- 5.1.2 [Figure 9](#) shows how female life expectancy has also changed within Council areas since 1991-1993, with Council areas ordered from left to right by the lowest to highest life expectancy in 1991-1993.
- 5.1.3 [Table 6](#) and [Table 7](#) compare male and female life expectancies in 2008-2010 with those for 1998-2000 and 2003-2005 and give rankings for each area in the respective years. Comparisons made between these rankings may be subject to the margin of error within the life expectancy estimates.
- 5.1.4 Male life expectancy has risen in all Council areas since 1998-2000, with the biggest increase of 5.4 per cent (3.9 years) being in Argyll and Bute. Female life expectancy appears to have increased in most Council areas since 1998-2000. In Orkney Islands and Shetland Islands there were small decreases but these were not significant ([Section 2.2](#)). City of Edinburgh Council saw the biggest rise in female life expectancy, increasing by 3.6 per cent (2.9 years).

Figure 8 Life expectancy at birth in Scotland, 1991-1993 to 2008-2010, by Council area Males



Ordered from lowest to highest life expectancy in 1991-1993

Figure 8 Life expectancy at birth in Scotland, 1991-1993 to 2008-2010, by Council area Males (continued)

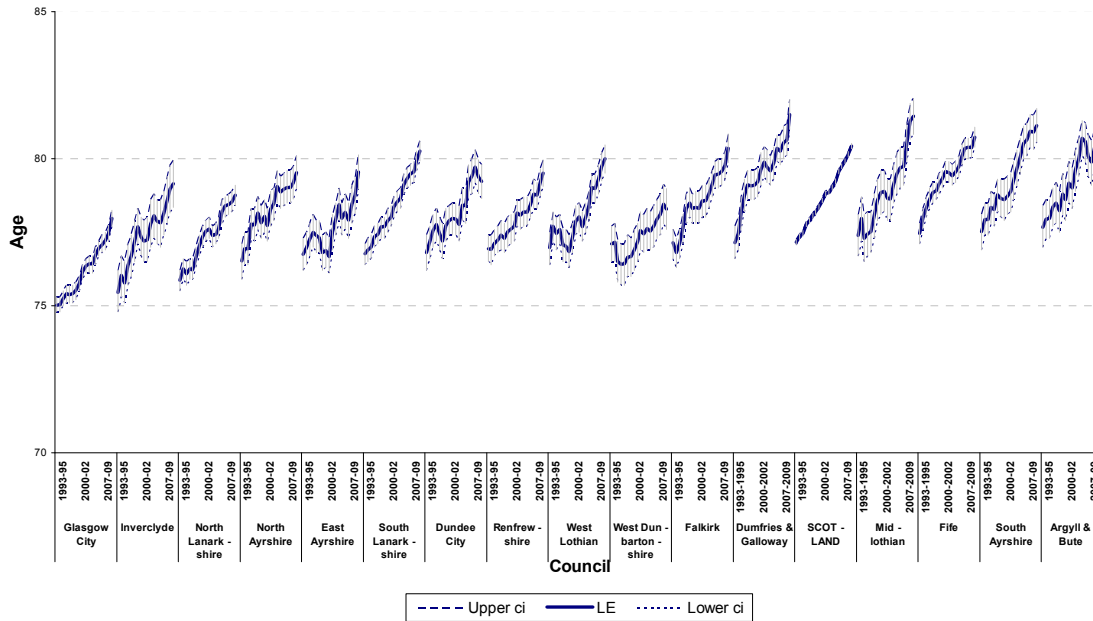


Ordered from lowest to highest life expectancy in 1991-1993

*Scotland figure included twice for comparison purposes

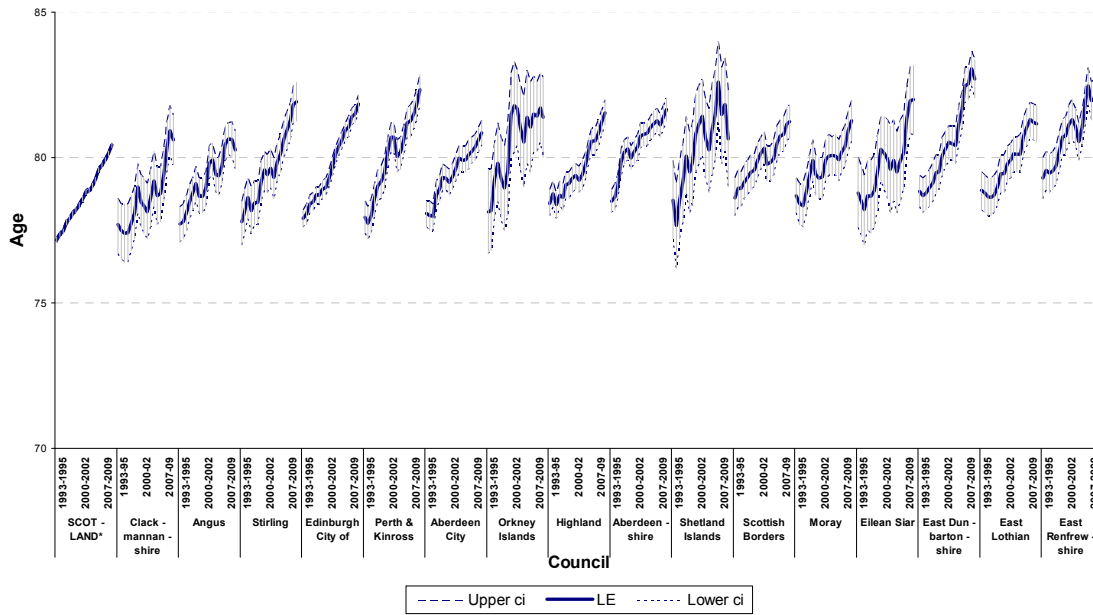
ci = confidence interval

Figure 9 Life expectancy at birth in Scotland, 1991-1993 to 2008-2010, by Council area Females



Ordered from lowest to highest life expectancy in 1991-1993

Figure 9 Life expectancy at birth in Scotland, 1991-1993 to 2008-2010, by Council area Females (continued)



Ordered from lowest to highest life expectancy in 1991-1993

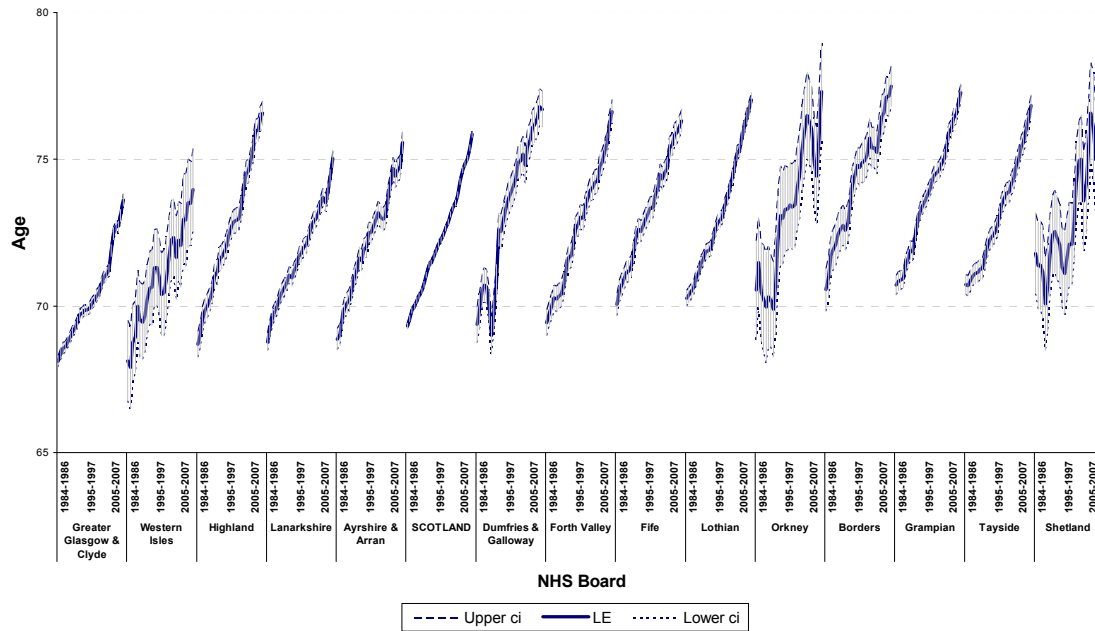
*Scotland figure included twice for comparison purposes

ci = confidence interval

5.2 NHS Board areas

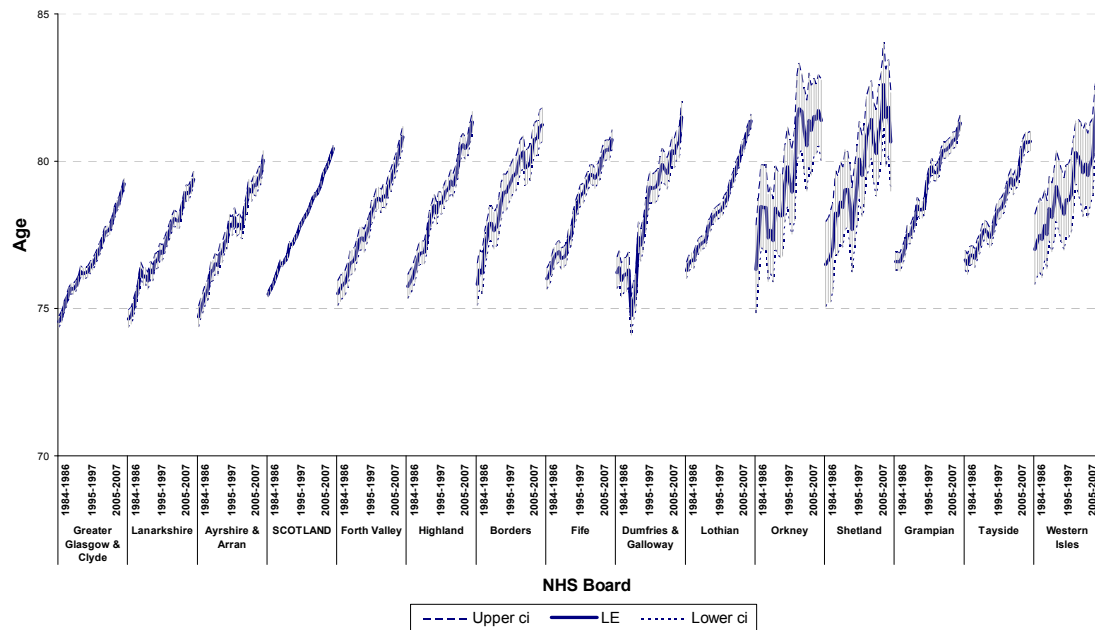
5.2.1 Figure 10 shows how male life expectancy has changed in NHS Board areas since 1981-1983 and is ordered from left to right by the lowest to highest life expectancy in 1981-1983. Figure 11 shows the same information for female life expectancy in NHS Board areas.

Figure 10 Life expectancy at birth in Scotland, 1981-1983 to 2008-2010, by NHS Board area, Males



Ordered from lowest to highest life expectancy in 1981-1983

Figure 11 Life expectancy at birth in Scotland, 1981-1983 to 2008-2010, by NHS Board area, Females



Ordered from lowest to highest life expectancy in 1981-1983

- 5.2.2 [Table 6](#) and [Table 7](#) compare male and female life expectancies in 2008-2010 with those for 1998-2000 and 2003-2005 and give rankings for each area in the respective years. Comparisons made between these rankings are subject to the margin of error within the life expectancy estimates.
- 5.2.3 Male life expectancy has risen in all NHS Board areas since 1998-2000, with Highland showing the biggest improvement, increasing by 5.0 per cent (3.7 years). Although male life expectancy in Greater Glasgow and Clyde remained at the same ranking of 14, it was second in terms of improvement, having increased by 4.8 per cent (3.3 years) since 1998-2000.
- 5.2.4 Female life expectancy increased in all areas except in Orkney and Shetland where there were no significant changes ([Section 2.2](#)). Lothian Health Board saw the biggest improvement, rising by 3.3 per cent (2.6 years).

5.3 Community Health Partnership areas

- 5.3.1 [Table 8](#) and [Table 9](#) compare male and female life expectancies in 2008-2010 with those for 1998-2000 and 2003-2005 and give rankings for each area in the respective years. Again, note that comparisons made between these rankings are subject to the margin of error within the life expectancy estimates.
- 5.3.2 All Community Health Partnerships (CHPs) have seen an increase in male life expectancy since 1998-2000, with Mid Highland CHP showing the biggest improvement, rising by 7.0 per cent (5.0 years). In terms of rankings, Mid Highland also saw the biggest improvement, rising from a rank of 29 in 1998-2000 to a rank of 13 in 2008-2010, with the biggest drop being in Dumfries and Galloway CHP, which was ranked 7 in 1998-2000 but ranked 17 in 2008-2010
- 5.3.3 All CHPs saw a rise in female life expectancy except for Orkney and Shetland where there were no significant changes. ([Section 2.2](#)). The biggest increase has been in Edinburgh CHP, which has risen by 3.6 per cent (2.9 years). Edinburgh CHP also saw the biggest improvement in its ranking, rising from a rank of 18 in 1998-2000 to a rank of 6 in 2008-2010.

6. Life expectancy at age 65, 2008-2010, geographical variations

6.1 Council areas

- 6.1.1 [Table 10](#) shows life expectancy at age 65 in Scotland for 2008-2010 for Council areas along with their respective rankings.
- 6.1.2 Males aged 65 in East Dunbartonshire, the Council area with the highest life expectancy at age 65 (18.9 years) could expect to live 4.6 years longer than those in Glasgow City, which had the lowest (14.3 years).
- 6.1.3 The gap between the Council area with the highest and lowest female life expectancy at age 65 is narrower than that for males of the same age. Females aged 65 in East Dunbartonshire could expect to live for a further 21.1 years, 3.3 years longer than those in Glasgow City, whose life expectancy at age 65 is estimated to be 17.8 years.

6.2 Health Board areas

- 6.2.1 [Table 10](#) shows life expectancy at age 65 in Scotland for 2008-2010 for NHS Board areas along with a ranking for each area.
- 6.2.2 Males in Tayside NHS Board area have the highest life expectancy at age 65 (17.8 years). The lowest figure is in Greater Glasgow and Clyde, where males aged 65 can expect to live for a further 15.5 years.
- 6.2.3 Female life expectancy at age 65 is highest in Western Isles NHS Board area (20.9 years) and lowest in Lanarkshire (18.5 years).

6.3 Community Health Partnership areas

- 6.3.1 [Table 11](#) shows life expectancy at age 65 in Scotland for 2008-2010 for Community Health Partnership areas along with a ranking for each area.
- 6.3.2 As with life expectancy at birth, male life expectancy at age 65 was highest in East Dunbartonshire (18.9 years) and lowest in Glasgow City (14.3 years), a gap of 4.6 years.
- 6.3.3 Female life expectancy at age 65 also showed a similar pattern, though the gap between highest and lowest life expectancies was narrower at 3.2 years. Females in East Dunbartonshire could expect to live a further 21.1 years, while those in Glasgow City could expect to live a further 17.9 years.

7. Further information

7.1 Life expectancy at birth

- 7.1.1 The Office for National Statistics (ONS) produces national life tables for the UK and constituent countries, which provide estimates of period life expectancy. Responsibility for the production of national life expectancy figures transferred to ONS from the Government Actuary's Department (GAD) on 31 January 2006.
- 7.1.2 Every ten years a set of graduated (smoothed) life tables for Scotland is published. They are available for the years 1930-1932 to 2000-2002 (excluding 1940-1942) and are available from the [Office for National Statistics](#) and [National Records of Scotland](#) (NRS) formerly General Register Office for Scotland (GROS) websites.
- 7.1.3 Also available on the [ONS](#) website are ungraduated interim life tables. These are produced annually for Scotland, based on data for a period of three consecutive calendar years.
- 7.1.4 Because of the differences between complete (single year of age) and abridged (grouped years) life tables, the abridged figures presented in this report for Scotland, England, Northern Ireland and Wales may differ slightly from the national interim figures published by ONS, which are complete and are the definitive life expectancies for these countries. A detailed description of the standard methods and notation associated with the calculation of life expectancy by ONS (and previous to this - GAD) can be found on the [GAD](#) website.
- 7.1.5 Period life expectancies are worked out using the age-specific mortality rates for a given period (either a single year, or aggregated years) which make no allowance for any later actual or projected changes in future mortality. Cohort life expectancies are worked out using age-specific mortality rates which allow for known or projected changes in mortality in later years. Period and cohort life expectancies based on projected mortality rates from the 2008-based national population projections can be accessed from the [ONS](#) website.
- 7.1.6 ONS published Scotland-level ungraduated interim life tables for 2008-2010 on 29 September 2011. These figures are also available in the Life Expectancy pages of the NRS/GROS website, within the '[Life Expectancy at Scotland Level](#)' section.
- 7.1.7 Life expectancy figures used for international comparisons are taken from Table tps00025 of the [Eurostat](#) website. Further information on [mortality and life expectancy](#) can also be found on this website.

7.2 Life expectancy for areas in Scotland

- 7.2.1 Previous NRS/GROS publications dedicated to life expectancy in administrative areas (Council and NHS Board) and special areas (Community Health Partnership, Urban/Rural and Deprivation) within Scotland can be found in the [Life Expectancy in Scottish Areas](#) (archives) of the NRS/GROS website.
- 7.2.2 A further breakdown of Council area life expectancy, which splits each Council by deprivation (and may be of particular use in monitoring inequalities within a Council

area) can also be found in this section, along with tables for life expectancy within the 73 Scottish Parliamentary Constituency areas.

7.2.3 Life expectancy tables with 95% confidence intervals for [Scottish Council](#) and [NHS Board](#) areas from 1991-1993 to 2007-2009 are available on the ONS website. These webpages also contains life expectancy tables for local and health authorities in England, Wales and Northern Ireland.

7.2.4 Figures for 2008-2010 will also be published by ONS on 19 October 2011. Earlier life expectancy tables for Scottish Council and NHS Board areas, back to 1981-1983 (in the form of abridged life tables) are available in the [Life Expectancy in Scottish Areas](#) archive section of the NRS/GROS website.

7.3 Healthy Life Expectancy

Healthy Life Expectancy (HLE) is defined as the number of years people can expect to live in good health. The difference between life expectancy and HLE indicates the length of time people can expect to spend in poor health. Information on HLE in Scotland was first published in 2004 by the Information Services Division (ISD) of the NHS in Scotland. Up to date information on the topic can be found on the Scottish Public Health Observatory ([ScotPHO](#)) website.

7.4 Other data available from the National Records of Scotland

Estimates of the resident population of Scotland are prepared by NRS each year. These are available by sex and single year of age for Council and NHS Board areas, together with historical data. Information is also available on a wide range of related topics such as small area population estimates, population projections, migration estimates and data from the 2001 and earlier Censuses. For further information please go to the [NRS /GROS](#) website.

or contact

Statistics
National
Ladywell
Edinburgh
EH12
Telephone:
Fax:

Customer Services
Records of Scotland
House
7TF.
0131 314 4299
0131 314 4696
Email: customer@gro-scotland.gsi.gov.uk

8. Notes and definitions

8.1 NHS Board areas

Following the dissolution of Argyll & Clyde NHS Board on 31 March 2006, its area has been split between Greater Glasgow and Highland NHS Boards and the former has been renamed Greater Glasgow & Clyde. The composition of the NHS Board areas in terms of Council areas is summarised in the table below:

NHS Board area	Council area
Ayrshire & Arran Borders	East Ayrshire, North Ayrshire, South Ayrshire
Dumfries & Galloway	Scottish Borders Dumfries & Galloway
Fife	Fife (part)
Forth Valley	Clackmannanshire, Falkirk (part), Stirling (part), Perth & Kinross (part)
Grampian	Aberdeen City, Aberdeenshire, Moray
Greater Glasgow & Clyde ¹	East Dunbartonshire, East Renfrewshire, Glasgow City, Inverclyde, North Lanarkshire (part), Renfrewshire, South Lanarkshire (part), Stirling (part), West Dunbartonshire
Highland ¹	Argyll & Bute, Highland
Lanarkshire	North Lanarkshire (part), South Lanarkshire (part), West Lothian (part), Falkirk (part)
Lothian	East Lothian, City of Edinburgh, Midlothian, West Lothian (part), Falkirk (part)
Orkney	Orkney Islands
Shetland	Shetland Islands
Tayside	Angus, Dundee City, Perth & Kinross (part), Fife (part)
Western Isles	Eilean Siar

¹ New Board areas including parts of former Argyll & Clyde NHS Board.

8.2 Community Health Partnerships

As of April 2011, there are 36 Community Health Partnership (CHP) organisations in Scotland following the merger of five Community Health and Social Care Partnerships to form Glasgow City CHP. In this publication, the new CHP is also split into three management sectors, North East, North West and South. CHPs are responsible for managing community health services and have developed existing links between community and hospital-based health services and local authority services such as social work, housing, leisure and education. Their principal aim is to improve the long-term health and wellbeing of communities and enhance the quality of health and social care services. In some areas the Partnerships are responsible for many local social care services and are therefore called Community Health and Care Partnerships (CHCPs) or Community Health and Social Care Partnerships (CHSCP) and are run jointly by the NHS with local Council partners. For ease of reading they are referred to as CHPs throughout the publication.

8.3 Urban and Rural areas

The urban-rural split used in this publication is the Scottish Government's 6-fold Urban Rural Classification version 2009-2010. The differences between the 2007-2008 and the 2009-2010 classifications stem from changes to either settlement populations or settlement boundaries. The definitions of urban and rural areas underlying the classification are unchanged. More information can be found in the 2009-2010 Urban Rural Classification publication held on the [Scottish Government](#) website. The 6-fold classification distinguishes between urban, rural and remote areas within Scotland. It is consistent with the Government's definition of rurality and includes the following categories:

1) Large Urban	Settlements of over 125,000 people.
2) Other Urban	Settlements of 10,000 to 125,000 people.
3) Accessible Small Towns	Settlements of between 3,000 and 10,000 people and within 30 minutes drive of a settlement of 10,000 or more.
4) Remote Small Towns	Settlements of between 3,000 and 10,000 people and with a drive time of over 30 minutes to a settlement of 10,000 or more.
5) Accessible Rural	Settlements of less than 3,000 people and within 30 minutes drive of a settlement of 10,000 or more.
6) Remote Rural	Settlements of less than 3,000 people and with a drive time of over 30 minutes to a settlement of 10,000 or more.

8.4 Deprivation areas

Deprivation areas are based on the Scottish Index of Multiple Deprivation (SIMD) 2009 developed by the Scottish Government. Further information can be found on the [Scottish Government](#) website. The SIMD ranks the 6,505 Scottish data zones (areas of compact shape and similar social characteristics with populations of around 795 people) from 1 (most deprived) to 6,505 (least deprived). Life expectancy figures for deprivation areas have been presented for deciles only in this publication, although the SIMD rank can also be split into vigintiles and quintiles. Deciles are groups which contain one tenth (approximately 651) of Scotland's 6505 data zones, where decile 1 contains the 10 per cent most deprived data zones and decile 10 contains the 10 per cent least deprived. The SIMD measures deprivation and not affluence and life expectancy figures presented by deprivation area in this publication should not be translated as 'life expectancy of the rich versus that of the poor' but instead should be viewed in terms of 'differences in life expectancy in relation to the amount of concentrated deprivation'. It should also be noted that not all people living in deprived areas are deprived and not all deprived people live in deprived areas.

Table 1 Abridged life table, by sex, age and Council area, Scotland, 2008-2010

Age x	Scotland ¹				Aberdeen City				Aberdeenshire				Angus				Argyll & Bute			
	Males		Females		Males		Females		Males		Females		Males		Females		Males		Females	
	l_x	e_x^o	l_x	e_x^o	l_x	e_x^o	l_x	e_x^o	l_x	e_x^o	l_x	e_x^o	l_x	e_x^o	l_x	e_x^o	l_x	e_x^o	l_x	e_x^o
0	100,000	75.85	100,000	80.43	100,000	76.30	100,000	80.86	100,000	78.15	100,000	81.65	100,000	77.59	100,000	80.27	100,000	77.03	100,000	80.91
1	99,561	75.18	99,653	79.71	99,521	75.67	99,786	80.03	99,657	77.42	99,833	80.79	99,311	77.12	99,559	79.62	99,917	76.10	99,748	80.11
5	99,486	71.23	99,586	75.76	99,491	71.69	99,756	76.05	99,590	73.47	99,833	76.79	99,311	73.12	99,501	75.67	99,754	72.22	99,748	76.11
10	99,425	66.28	99,551	70.79	99,491	66.69	99,756	71.05	99,474	68.55	99,709	71.88	99,257	68.16	99,387	70.75	99,678	67.27	99,669	71.17
15	99,381	61.31	99,493	65.83	99,491	61.69	99,756	66.05	99,453	63.57	99,595	66.96	99,207	63.20	99,334	65.79	99,616	62.31	99,604	66.22
20	99,077	56.49	99,332	60.93	99,249	56.83	99,654	61.12	99,093	58.79	99,369	62.11	98,786	58.46	98,966	61.03	99,215	57.55	99,477	61.30
25	98,649	51.72	99,153	56.04	98,916	52.02	99,557	56.18	98,515	54.12	99,174	57.22	98,185	53.80	98,597	56.24	98,689	52.85	99,312	56.40
30	98,044	47.02	98,942	51.15	98,429	47.26	99,300	51.31	97,987	49.40	99,025	52.31	97,425	49.20	98,056	51.54	98,199	48.10	99,212	51.45
35	97,248	42.39	98,585	46.33	97,625	42.63	99,037	46.44	97,388	44.69	98,720	47.46	96,580	44.61	97,812	46.66	97,444	43.45	98,939	46.58
40	96,257	37.80	98,097	41.55	96,541	38.08	98,487	41.69	96,635	40.01	98,302	42.65	95,705	39.99	97,416	41.84	96,725	38.76	98,576	41.75
45	94,983	33.27	97,373	36.84	95,083	33.62	97,918	36.92	95,841	35.33	97,696	37.90	94,961	35.29	96,513	37.21	95,624	34.17	97,614	37.13
50	93,277	28.83	96,336	32.21	93,399	29.19	97,008	32.24	94,763	30.70	96,814	33.22	93,698	30.73	95,445	32.60	94,438	29.57	96,698	32.46
55	90,720	24.58	94,663	27.73	90,773	24.96	95,263	27.78	93,222	26.16	95,577	28.62	91,218	26.49	93,888	28.10	91,988	25.29	94,775	28.07
60	86,943	20.54	92,182	23.41	87,156	20.89	92,904	23.43	90,321	21.92	93,802	24.12	88,542	22.22	91,571	23.75	88,357	21.23	91,859	23.88
65	81,416	16.76	88,335	19.32	82,383	16.96	89,142	19.31	86,140	17.87	90,397	19.93	84,604	18.14	88,163	19.57	83,151	17.40	88,084	19.80
70	73,137	13.37	82,499	15.51	74,010	13.59	83,559	15.43	78,880	14.28	85,802	15.86	78,238	14.41	82,433	15.75	75,822	13.84	82,539	15.96
75	61,843	10.36	73,802	12.04	62,722	10.59	74,771	11.95	68,972	10.97	77,642	12.27	68,529	11.10	74,556	12.15	65,386	10.65	75,341	12.25
80	47,074	7.83	60,939	9.06	47,804	8.11	62,461	8.82	54,336	8.26	65,227	9.13	54,570	8.30	63,089	8.91	51,068	7.94	63,068	9.14
85	29,598	5.97	43,520	6.68	29,933	6.46	45,261	6.22	35,786	6.24	47,283	6.64	34,593	6.64	46,094	6.27	33,119	5.88	46,423	6.52

Age x	Clackmannanshire				Dumfries and Galloway				Dundee City				East Ayrshire				East Dunbartonshire			
	Males		Females		Males		Females		Males		Females		Males		Females		Males		Females	
	l_x	e_x^o	l_x	e_x^o	l_x	e_x^o	l_x	e_x^o	l_x	e_x^o	l_x	e_x^o	l_x	e_x^o	l_x	e_x^o	l_x	e_x^o	l_x	e_x^o
0	100,000	75.62	100,000	80.61	100,000	76.70	100,000	81.50	100,000	73.85	100,000	79.22	100,000	75.39	100,000	79.55	100,000	79.39	100,000	82.70
1	99,581	74.93	99,789	79.78	99,465	76.11	99,644	80.80	99,300	73.37	99,613	78.53	99,531	74.74	99,643	78.83	99,934	78.44	99,343	82.25
5	99,581	70.93	99,675	75.87	99,422	72.15	99,508	76.90	99,218	69.43	99,570	74.56	99,531	70.74	99,590	74.87	99,934	74.44	99,276	78.30
10	99,581	65.93	99,675	70.87	99,422	67.15	99,508	71.90	98,986	64.59	99,472	69.63	99,531	65.74	99,590	69.87	99,934	69.44	99,156	73.40
15	99,475	61.00	99,565	65.95	99,422	62.15	99,508	66.90	98,765	59.72	99,284	64.76	99,484	60.77	99,437	64.97	99,934	64.44	99,156	68.40
20	98,976	56.30	99,462	61.01	99,238	57.26	99,352	62.00	98,236	55.03	99,154	59.84	99,035	56.04	99,226	60.11	99,712	59.58	98,956	63.53
25	98,388	51.62	99,000	56.29	98,735	52.54	99,069	57.17	97,762	50.29	98,826	55.03	98,529	51.31	99,136	55.16	99,466	54.72	98,841	58.60
30	97,943	46.84	98,876	51.35	97,581	48.13	98,815	52.32	97,127	45.60	98,438	50.24	97,962	46.60	98,885	50.29	98,937	50.00	98,703	53.68
35	97,337	42.12	98,648	46.47	96,449	43.66	98,566	47.44	95,627	41.28	97,915	45.49	97,106	41.98	98,531	45.47	97,882	45.51	98,628	48.72
40	96,460	37.48	98,466	41.55	95,978	38.86	98,095	42.66	94,468	36.75	97,095	40.86	95,909	37.48	97,788	40.79	97,516	40.68	98,474	43.79
45	94,711	33.12	97,701	36.85	95,001	34.24	97,435	37.93	92,246	32.58	96,234	36.20	94,534	32.99	97,210	36.02	96,701	36.00	98,011	38.98
50	93,052	28.67	96,972	32.11	93,736	29.67	96,635	33.22	90,374	28.20	94,796	31.71	93,294	28.39	96,044	31.43	95,504	31.42	97,222	34.28
55	90,305	24.46	95,047	27.71	91,609	25.30	94,948	28.77	87,357	24.09	92,893	27.31	90,654	24.15	94,013	27.05	93,391	27.07	95,698	29.79
60	87,063	20.28	93,131	23.23	88,473	21.11	92,994	24.32	82,475	20.37	89,863	23.15	86,280	20.24	90,935	22.88	90,830	22.76	93,868	25.32
65	81,183	16.57	89,450	19.08	83,785	17.15	89,793	20.10	76,414	16.78	85,260	19.26	81,400	16.31	86,609	18.90	85,839	18.94	90,795	21.09
70	73,737	12.99	84,390	15.08	76,023	13.64	85,053	16.08	67,956	13.56	78,453	15.71	72,603	12.98	79,408	15.39	79,476	15.26	85,946	17.14
75	62,177	9.94	76,609	11.36	65,760	10.38	77,548	12.39	56,337	10.84	69,766	12.36	61,313	9.91	70,929	11.93	70,569	11.87	78,537	13.52
80	46,679	7.41	60,381	8.74	51,643	7.54	66,055	9.11	43,462	8.31	57,203	9.52	45,352	7.52	57,469	9.14	58,152	8.87	68,590	10.12
85	29,578	5.25	43,704	6.11	32,595	5.48	47,136	6.77	26,036	7.20	41,931	7.08	28,768	5.41	39,700	7.11	39,539	6.87	51,939	7.56

Table 1 Abridged life table, by sex, age and Council area, Scotland 2008-2010 (continued)

Age x	East Lothian				East Renfrewshire				Edinburgh, City of				Eilean Siar				Falkirk			
	Males		Females		Males		Females		Males		Females		Males		Females		Males		Females	
	l_x	e_x^o	l_x	e_x^o	l_x	e_x^o	l_x	e_x^o	l_x	e_x^o	l_x	e_x^o	l_x	e_x^o	l_x	e_x^o	l_x	e_x^o	l_x	e_x^o
0	100,000	77.26	100,000	81.16	100,000	78.27	100,000	82.26	100,000	77.17	100,000	81.85	100,000	73.97	100,000	81.99	100,000	76.37	100,000	80.35
1	99,717	76.48	99,579	80.50	99,491	77.67	99,615	81.58	99,550	76.51	99,644	81.14	100,000	72.97	100,000	80.99	99,576	75.69	99,661	79.62
5	99,662	72.52	99,405	76.64	99,491	73.67	99,615	77.58	99,496	72.55	99,515	77.24	100,000	68.97	100,000	76.99	99,504	71.75	99,624	75.65
10	99,542	67.61	99,344	71.68	99,432	68.71	99,490	72.67	99,480	67.57	99,498	72.25	99,747	64.14	100,000	71.99	99,465	66.77	99,584	70.68
15	99,489	62.64	99,344	66.68	99,380	63.75	99,434	67.71	99,436	62.59	99,498	67.25	99,747	59.14	99,788	67.14	99,465	61.77	99,507	65.73
20	99,231	57.80	99,240	61.75	99,225	58.84	99,264	62.82	99,234	57.72	99,328	62.36	99,339	54.38	99,550	62.29	99,242	56.91	99,362	60.83
25	98,699	53.10	99,240	56.75	98,993	53.98	99,264	57.82	98,940	52.88	99,165	57.46	98,061	50.05	99,206	57.50	98,772	52.17	99,247	55.89
30	97,888	48.52	99,083	51.84	98,309	49.33	99,090	52.92	98,564	48.07	99,043	52.53	96,856	45.64	98,899	52.67	98,284	47.41	99,139	50.95
35	97,010	43.93	98,679	47.04	97,338	44.80	98,583	48.18	98,106	43.29	98,817	47.65	96,094	40.99	98,656	47.79	97,632	42.71	98,864	46.09
40	96,446	39.17	98,401	42.16	96,565	40.14	98,236	43.34	97,212	38.66	98,449	42.81	94,928	36.46	98,456	42.89	96,719	38.09	98,437	41.28
45	95,641	34.48	98,010	37.32	95,751	35.46	97,638	38.59	96,032	34.11	97,807	38.08	93,807	31.86	98,131	38.02	95,707	33.47	97,696	36.57
50	94,088	30.01	97,086	32.65	94,875	30.76	97,073	33.80	94,431	29.64	96,793	33.45	93,040	27.11	97,474	33.26	94,293	28.93	96,867	31.86
55	91,817	25.69	95,641	28.11	93,267	26.25	95,791	29.22	92,200	25.30	95,181	28.98	90,386	22.83	95,592	28.86	91,740	24.67	95,087	27.41
60	88,261	21.63	93,326	23.74	91,012	21.84	93,961	24.74	88,342	21.29	93,134	24.56	84,859	19.15	92,377	24.78	88,421	20.50	92,781	23.03
65	84,190	17.55	89,715	19.60	86,832	17.77	90,657	20.55	82,623	17.59	89,760	20.39	75,982	16.10	87,953	20.90	83,260	16.62	89,227	18.85
70	78,033	13.74	84,239	15.71	79,735	14.13	85,761	16.58	75,104	14.11	84,461	16.51	67,918	12.71	83,185	16.96	75,688	13.03	82,834	15.11
75	66,648	10.66	76,090	12.13	69,876	10.77	78,989	12.79	64,303	11.06	76,961	12.87	57,419	9.58	77,291	13.06	64,028	9.95	73,901	11.63
80	53,342	7.69	63,146	9.10	56,978	7.64	67,585	9.52	50,032	8.50	64,765	9.83	39,639	7.76	67,596	9.58	47,469	7.55	60,881	8.59
85	34,176	5.60	45,967	6.56	35,408	5.78	51,211	6.77	32,286	6.79	48,215	7.34	26,628	5.32	50,859	6.90	28,890	5.79	42,066	6.31

Age x	Fife				Glasgow City				Highland				Inverclyde				Midlothian			
	Males		Females		Males		Females		Males		Females		Males		Females		Males		Females	
	l_x	e_x^o	l_x	e_x^o	l_x	e_x^o	l_x	e_x^o	l_x	e_x^o	l_x	e_x^o	l_x	e_x^o	l_x	e_x^o	l_x	e_x^o	l_x	e_x^o
0	100,000	76.31	100,000	80.73	100,000	71.64	100,000	77.97	100,000	76.40	100,000	81.55	100,000	72.98	100,000	79.15	100,000	76.61	100,000	81.44
1	99,413	75.76	99,530	80.11	99,454	71.04	99,598	77.28	99,583	75.72	99,658	80.83	99,407	72.41	99,397	78.63	99,867	75.71	99,930	80.50
5	99,365	71.80	99,497	76.14	99,365	67.10	99,484	73.37	99,447	71.82	99,600	76.87	99,407	68.41	98,987	74.94	99,662	71.86	99,930	76.50
10	99,298	66.85	99,461	71.16	99,261	62.17	99,460	68.39	99,308	66.92	99,570	71.89	99,407	63.41	98,905	70.00	99,591	66.91	99,930	71.50
15	99,282	61.86	99,363	66.23	99,194	57.21	99,413	63.42	99,283	61.93	99,490	66.95	99,269	58.50	98,905	65.00	99,591	61.91	99,930	66.50
20	99,046	57.00	99,249	61.31	98,915	52.36	99,283	58.50	98,819	57.21	99,302	62.07	98,768	53.78	98,436	60.30	99,470	56.98	99,930	61.50
25	98,703	52.19	99,055	56.42	98,522	47.56	99,141	53.58	98,136	52.59	99,038	57.23	98,234	49.06	98,371	55.34	99,012	52.24	99,861	56.54
30	97,919	47.58	98,861	51.53	97,944	42.83	98,915	48.69	97,503	47.92	98,798	52.36	97,414	44.45	97,946	50.57	97,794	47.86	99,476	51.75
35	97,039	42.99	98,417	46.75	97,112	38.17	98,396	43.94	96,619	43.33	98,423	47.55	96,434	39.88	97,545	45.77	97,267	43.10	99,251	46.86
40	96,252	38.32	97,912	41.98	95,630	33.72	97,626	39.27	95,667	38.74	97,997	42.75	94,968	35.45	96,985	41.02	96,424	38.46	98,849	42.04
45	95,073	33.77	97,222	37.26	93,351	29.49	96,499	34.70	94,764	34.09	97,439	37.98	93,665	30.91	96,451	36.23	95,602	33.77	98,320	37.25
50	93,310	29.36	96,043	32.68	90,513	25.33	95,177	30.14	93,140	29.64	96,466	33.34	91,612	26.55	95,432	31.59	94,296	29.20	97,465	32.55
55	90,937	25.06	94,769	28.09	86,603	21.36	93,012	25.79	90,778	25.34	95,237	28.74	87,546	22.67	93,392	27.23	92,186	24.81	95,993	28.02
60	87,422	20.97	92,396	23.75	81,166	17.63	89,461	21.71	86,911	21.36	92,870	24.41	82,591	18.88	90,203	23.10	88,348	20.78	94,565	23.40
65	82,555	17.06	88,604	19.65	73,125	14.29	84,472	17.84	81,766	17.55	89,832	20.15	74,997	15.53	86,735	18.92	83,860	16.76	90,558	19.33
70	75,295	13.46	83,328	15.74	61,128	11.60	76,330	14.48	74,181	14.08	84,497	16.26	65,834	12.35	80,171	15.27	76,653	13.10	85,641	15.29
75	64,357	10.32	74,522	12.31	48,197	9.05	65,593	11.44	63,589	11.01	76,481	12.70	54,548	9.39	72,125	11.69	65,011	10.00	77,014	11.73
80	49,768	7.62	61,083	9.46	32,579	7.19	52,442	8.69	50,100	8.31	65,041	9.50	40,330	6.81	58,599	8.82	48,859	7.47	62,851	8.80
85	31,674	5.54	43,420	7.30	18,870	5.59	36,443	6.40	32,480	6.46	47,106	7.16	22,873	5.11	41,113	6.50	28,287	6.09	44,977	6.31

Table 1 Abridged life table, by sex, age and Council area, Scotland 2008-2010 (continued)

Age x	Moray				North Ayrshire				North Lanarkshire				Orkney Islands				Perth & Kinross			
	Males		Females		Males		Females		Males		Females		Males		Females		Males		Females	
	l_x	e_x^o	l_x	e_x^o	l_x	e_x^o	l_x	e_x^o	l_x	e_x^o	l_x	e_x^o	l_x	e_x^o	l_x	e_x^o	l_x	e_x^o	l_x	e_x^o
0	100,000	76.89	100,000	81.27	100,000	75.03	100,000	79.53	100,000	74.28	100,000	78.75	100,000	77.30	100,000	81.39	100,000	79.06	100,000	82.34
1	99,672	76.14	99,720	80.50	99,514	74.40	99,410	79.01	99,524	73.63	99,669	78.01	99,380	76.78	99,669	80.66	99,736	78.27	99,577	81.69
5	99,537	72.24	99,646	76.55	99,385	70.49	99,318	75.08	99,460	69.68	99,617	74.05	99,380	72.78	99,339	76.92	99,601	74.37	99,529	77.73
10	99,463	67.29	99,646	71.55	99,385	65.49	99,318	70.08	99,460	64.68	99,599	69.06	99,380	67.78	99,339	71.92	99,601	69.37	99,529	72.73
15	99,404	62.33	99,517	66.64	99,344	60.52	99,318	65.08	99,428	59.70	99,532	64.11	99,380	62.78	99,339	66.92	99,523	64.42	99,529	67.73
20	99,079	57.53	99,080	61.93	98,949	55.75	99,279	60.10	99,076	54.90	99,417	59.18	98,840	58.11	99,339	61.92	99,130	59.67	99,408	62.81
25	98,559	52.82	98,771	57.11	98,364	51.07	99,032	55.24	98,722	50.09	99,212	54.30	97,214	54.04	98,963	57.15	98,966	54.76	99,255	57.90
30	97,657	48.28	98,683	52.16	97,751	46.37	98,851	50.34	98,131	45.37	98,942	49.44	97,214	49.04	98,963	52.15	98,570	49.97	99,168	52.95
35	97,089	43.55	98,050	47.48	96,704	41.85	98,298	45.61	97,211	40.78	98,549	44.63	96,516	44.38	98,963	47.15	98,200	45.15	99,020	48.03
40	96,358	38.86	97,661	42.66	95,592	37.30	97,693	40.88	96,011	36.26	98,043	39.84	95,405	39.87	98,711	42.26	97,437	40.48	98,422	43.30
45	95,511	34.18	97,089	37.90	94,083	32.86	96,959	36.17	94,722	31.72	97,084	35.21	94,043	35.41	97,674	37.68	96,471	35.87	97,962	38.49
50	94,113	29.65	96,562	33.09	92,247	28.47	95,786	31.58	92,675	27.36	95,915	30.61	93,280	30.68	97,053	32.91	95,148	31.33	96,899	33.89
55	91,450	25.45	95,477	28.44	89,665	24.21	93,840	27.18	89,607	23.21	94,007	26.18	92,441	25.93	95,790	28.31	93,416	26.86	95,422	29.37
60	87,417	21.50	92,770	24.20	85,475	20.28	91,642	22.78	85,361	19.25	90,647	22.06	89,750	21.64	93,567	23.92	91,068	22.49	93,744	24.86
65	82,376	17.67	89,967	19.87	79,169	16.69	87,454	18.75	78,939	15.61	85,712	18.19	85,764	17.53	90,123	19.74	86,640	18.51	91,029	20.52
70	75,362	14.08	85,061	15.87	70,780	13.38	81,337	14.97	69,336	12.42	79,223	14.47	79,559	13.70	84,517	15.88	80,805	14.67	86,704	16.42
75	65,259	10.87	76,899	12.29	60,108	10.31	72,103	11.56	56,715	9.63	69,417	11.16	67,393	10.72	78,336	11.94	70,298	11.49	78,992	12.78
80	50,938	8.22	64,855	9.11	45,616	7.79	58,551	8.66	40,911	7.39	55,042	8.42	53,386	7.88	68,357	8.32	57,899	8.41	67,772	9.48
85	33,680	6.16	47,617	6.50	28,854	5.86	41,052	6.29	24,237	5.75	36,523	6.43	36,348	5.40	46,327	6.08	39,706	6.12	50,599	6.85

Age x	Renfrewshire				Scottish Borders				Shetland Islands				South Ayrshire				South Lanarkshire			
	Males		Females		Males		Females		Males		Females		Males		Females		Males		Females	
	l_x	e_x^o	l_x	e_x^o	l_x	e_x^o	l_x	e_x^o	l_x	e_x^o	l_x	e_x^o	l_x	e_x^o	l_x	e_x^o	l_x	e_x^o	l_x	e_x^o
0	100,000	73.82	100,000	79.51	100,000	77.49	100,000	81.24	100,000	77.23	100,000	80.65	100,000	76.36	100,000	81.13	100,000	75.74	100,000	80.26
1	99,171	73.43	99,789	78.68	99,826	76.63	99,615	80.55	99,526	76.60	98,397	80.97	99,575	75.69	99,744	80.34	99,833	74.86	99,812	79.41
5	99,069	69.51	99,789	74.68	99,661	72.75	99,558	76.60	99,526	72.60	98,397	76.97	99,514	71.73	99,682	76.39	99,740	70.93	99,774	75.44
10	99,069	64.51	99,789	69.68	99,554	67.82	99,558	71.60	99,024	67.95	98,397	71.97	99,337	66.85	99,682	71.39	99,681	65.97	99,734	70.47
15	99,069	59.51	99,789	64.68	99,405	62.92	99,507	66.63	99,024	62.95	98,397	66.97	99,337	61.85	99,573	66.46	99,593	61.03	99,661	65.52
20	98,737	54.70	99,694	59.74	99,112	58.10	99,308	61.76	98,808	58.09	97,669	62.45	99,048	57.03	99,420	61.56	99,315	56.19	99,556	60.59
25	98,120	50.03	99,478	54.86	98,574	53.40	99,121	56.87	98,283	53.38	97,335	57.65	98,461	52.35	99,314	56.62	98,950	51.39	99,395	55.68
30	97,124	45.51	99,163	50.03	97,656	48.88	98,840	52.03	98,283	48.38	97,024	52.83	97,994	47.59	99,189	51.69	98,303	46.71	99,162	50.81
35	95,963	41.03	98,708	45.25	96,847	44.27	98,520	47.19	98,032	43.50	97,024	47.83	97,247	42.94	98,681	46.94	97,427	42.11	98,976	45.90
40	94,724	36.54	98,354	40.40	96,092	39.60	98,000	42.42	96,950	38.96	96,814	42.93	96,533	38.24	98,352	42.09	96,372	37.54	98,623	41.05
45	93,446	32.00	97,615	35.69	95,231	34.93	97,360	37.69	95,244	34.61	96,616	38.01	95,241	33.72	97,844	37.30	95,051	33.03	97,832	36.36
50	91,519	27.62	96,466	31.08	94,189	30.29	96,700	32.93	93,496	30.21	96,054	33.22	93,629	29.26	96,804	32.67	93,306	28.60	96,670	31.77
55	88,592	23.45	94,592	26.65	92,373	25.84	95,164	28.42	91,301	25.88	93,410	29.09	91,236	24.96	95,125	28.20	90,998	24.26	95,272	27.20
60	85,040	19.33	91,823	22.38	88,988	21.73	93,459	23.89	88,105	21.73	92,175	24.44	87,799	20.84	92,826	23.84	87,396	20.16	92,537	22.93
65	78,435	15.75	87,688	18.31	84,748	17.69	90,393	19.62	83,816	17.71	88,822	20.27	82,902	16.82	89,100	19.73	81,755	16.38	88,207	18.93
70	68,634	12.64	80,868	14.65	78,541	13.89	85,650	15.56	77,082	14.04	84,217	16.24	73,941	13.67	83,889	15.80	72,769	13.09	82,217	15.13
75	57,004	9.71	71,791	11.18	68,618	10.54	77,906	11.86	65,726	11.03	76,469	12.64	63,143	10.58	75,546	12.27	60,150	10.31	72,756	11.77
80	41,129	7.49	57,147	8.41	54,129	7.69	64,650	8.78	52,273	8.23	66,122	9.22	48,764	7.96	62,062	9.40	45,610	7.80	59,589	8.82
85	25,071	5.68	39,106	6.13	34,916	5.54	46,850	6.17	33,645	6.40	50,542	6.29	31,689	5.91	45,709	6.86	28,469	6.00	41,548	6.57

Table 1 Abridged life table, by sex, age and Council area, Scotland 2008-2010 (continued)

Age x	Stirling				West Dunbartonshire				West Lothian			
	Males		Females		Males		Females		Males		Females	
	l_x	e_x^o	l_x	e_x^o	l_x	e_x^o	l_x	e_x^o	l_x	e_x^o	l_x	e_x^o
0	100,000	77.81	100,000	81.92	100,000	73.61	100,000	78.29	100,000	76.20	100,000	79.99
1	99,557	77.16	99,537	81.30	99,578	72.92	99,756	77.48	99,771	75.37	99,730	79.21
5	99,488	73.21	99,537	77.30	99,516	68.96	99,691	73.53	99,655	71.46	99,700	75.23
10	99,422	68.26	99,537	72.30	99,446	64.01	99,620	68.58	99,623	66.48	99,668	70.26
15	99,422	63.26	99,476	67.34	99,384	59.05	99,355	63.76	99,623	61.48	99,668	65.26
20	99,128	58.44	99,241	62.50	99,060	54.23	99,063	58.94	99,449	56.58	99,482	60.37
25	98,566	53.76	99,194	57.53	98,553	49.50	98,742	54.12	99,088	51.78	99,163	55.56
30	98,277	48.91	99,194	52.53	97,940	44.79	98,411	49.30	98,233	47.21	99,033	50.63
35	97,505	44.28	98,895	47.68	97,105	40.16	97,717	44.63	97,434	42.57	98,748	45.77
40	96,928	39.52	98,474	42.87	95,840	35.65	96,815	40.02	96,654	37.90	98,366	40.94
45	95,864	34.94	98,073	38.03	94,209	31.23	95,831	35.41	95,825	33.20	97,748	36.18
50	94,319	30.47	97,422	33.27	91,583	27.05	94,441	30.89	94,400	28.67	96,770	31.52
55	92,228	26.10	95,732	28.82	88,417	22.93	92,064	26.63	92,227	24.28	95,128	27.02
60	89,379	21.85	93,449	24.46	83,503	19.13	89,771	22.24	89,129	20.04	92,706	22.66
65	84,645	17.94	90,379	20.20	76,674	15.61	85,951	18.12	83,396	16.25	87,947	18.75
70	77,959	14.26	84,648	16.40	67,641	12.36	79,640	14.36	74,268	12.94	82,295	14.87
75	68,234	10.94	77,532	12.68	55,248	9.58	70,001	10.99	62,325	9.94	72,510	11.54
80	53,503	8.26	66,936	9.29	40,294	7.20	56,422	8.03	46,852	7.39	58,379	8.72
85	37,661	5.68	49,619	6.66	22,984	5.75	37,208	5.89	29,081	5.38	39,113	6.79

¹ Please note that the Scotland-level life expectancy estimate shown here is for use only as a comparator for the corresponding sub-Scotland-level figures. The definitive Scotland-level life expectancy estimate (based on interim life tables) is published by the Office for National Statistics: [National Statistics Online - Interim Life tables](#).

Note: This abridged life table is constructed from the estimated population in 2008, 2009 and 2010 and the total number of deaths registered in these years. The column headed l_x shows the numbers who would survive to the exact age of x out of 100,000 persons who, from birth, were subject to the mortality probabilities indicated by the death records for 2008-2010. Column e_x^o shows the expectation of life, that is, the average number of years of life left to persons aged exactly x who are subject to the 2008-2010 mortality probabilities from age x onwards.

Table 2 Abridged life table, by sex, age and NHS Board area, Scotland, 2008-2010

Age x	Scotland ¹				Ayrshire & Arran				Borders				Dumfries & Galloway				Fife			
	Males		Females		Males		Females		Males		Females		Males		Females		Males		Females	
	l_x	e_x^o	l_x	e_x^o	l_x	e_x^o	l_x	e_x^o	l_x	e_x^o	l_x	e_x^o	l_x	e_x^o	l_x	e_x^o	l_x	e_x^o	l_x	e_x^o
0	100,000	75.85	100,000	80.43	100,000	75.56	100,000	80.03	100,000	77.49	100,000	81.24	100,000	76.70	100,000	81.50	100,000	76.31	100,000	80.73
1	99,561	75.18	99,653	79.71	99,536	74.91	99,581	79.37	99,826	76.63	99,615	80.55	99,465	76.11	99,644	80.80	99,413	75.76	99,530	80.11
5	99,486	71.23	99,586	75.76	99,470	70.96	99,511	75.42	99,661	72.75	99,558	76.60	99,422	72.15	99,508	76.90	99,365	71.80	99,497	76.14
10	99,425	66.28	99,551	70.79	99,419	66.00	99,511	70.42	99,554	67.82	99,558	71.60	99,422	67.15	99,508	71.90	99,298	66.84	99,461	71.16
15	99,381	61.31	99,493	65.83	99,388	61.02	99,430	65.48	99,405	62.92	99,507	66.63	99,422	62.15	99,508	66.90	99,282	61.85	99,363	66.23
20	99,077	56.49	99,332	60.93	99,005	56.24	99,299	60.56	99,112	58.10	99,308	61.76	99,238	57.26	99,352	62.00	99,046	56.99	99,249	61.30
25	98,649	51.72	99,153	56.04	98,446	51.55	99,146	55.65	98,574	53.40	99,121	56.87	98,735	52.54	99,069	57.17	98,703	52.18	99,055	56.42
30	98,044	47.02	98,942	51.15	97,892	46.83	98,957	50.75	97,656	48.88	98,840	52.03	97,581	48.13	98,815	52.32	97,918	47.58	98,861	51.52
35	97,248	42.39	98,585	46.33	96,997	42.24	98,485	45.98	96,847	44.27	98,520	47.19	96,449	43.66	98,566	47.44	97,039	42.99	98,416	46.75
40	96,257	37.80	98,097	41.55	95,969	37.66	97,911	41.24	96,092	39.60	98,000	42.42	95,978	38.86	98,095	42.66	96,251	38.32	97,912	41.97
45	94,983	33.27	97,373	36.84	94,570	33.18	97,295	36.48	95,231	34.93	97,360	37.69	95,001	34.24	97,435	37.93	95,073	33.77	97,221	37.25
50	93,277	28.83	96,336	32.21	93,000	28.70	96,164	31.88	94,189	30.29	96,700	32.93	93,736	29.67	96,635	33.22	93,309	29.36	96,043	32.68
55	90,720	24.58	94,663	27.73	90,459	24.44	94,275	27.47	92,373	25.84	95,164	28.42	91,609	25.30	94,948	28.77	90,936	25.06	94,768	28.09
60	86,943	20.54	92,182	23.41	86,447	20.45	91,770	23.15	88,988	21.73	93,459	23.89	88,473	21.11	92,994	24.32	87,419	20.96	92,394	23.74
65	81,416	16.76	88,335	19.32	81,033	16.65	87,683	19.11	84,748	17.69	90,393	19.62	83,785	17.15	89,793	20.10	82,552	17.05	88,601	19.65
70	73,137	13.37	82,499	15.51	72,338	13.35	81,516	15.37	78,541	13.89	85,650	15.56	76,023	13.64	85,053	16.08	75,290	13.46	83,324	15.74
75	61,843	10.36	73,802	12.04	61,440	10.28	72,809	11.91	68,618	10.54	77,906	11.86	65,760	10.38	77,548	12.39	64,349	10.32	74,518	12.30
80	47,074	7.83	60,939	9.06	46,545	7.77	59,314	9.05	54,129	7.69	64,650	8.78	51,643	7.54	66,055	9.11	49,758	7.61	61,076	9.46
85	29,598	5.97	43,520	6.68	29,756	5.74	42,152	6.72	34,916	5.54	46,850	6.17	32,595	5.48	47,136	6.77	31,664	5.54	43,412	7.29

Age x	Forth Valley				Grampian				Greater Glasgow & Clyde				Highland				Lanarkshire			
	Males		Females		Males		Females		Males		Females		Males		Females		Males		Females	
	l_x	e_x^o	l_x	e_x^o	l_x	e_x^o	l_x	e_x^o	l_x	e_x^o	l_x	e_x^o	l_x	e_x^o	l_x	e_x^o	l_x	e_x^o	l_x	e_x^o
0	100,000	76.63	100,000	80.83	100,000	77.27	100,000	81.30	100,000	73.62	100,000	79.23	100,000	76.56	100,000	81.33	100,000	75.02	100,000	79.39
1	99,572	75.96	99,653	80.11	99,605	76.57	99,797	80.46	99,476	73.00	99,620	78.53	99,663	75.82	99,681	80.59	99,658	74.28	99,736	78.60
5	99,514	72.01	99,613	76.14	99,540	72.62	99,774	76.48	99,408	69.05	99,528	74.60	99,520	71.93	99,637	76.63	99,580	70.34	99,685	74.64
10	99,473	67.03	99,592	71.15	99,471	67.67	99,713	71.53	99,344	64.10	99,484	69.64	99,398	67.01	99,594	71.66	99,559	65.35	99,653	69.66
15	99,455	62.05	99,514	66.21	99,451	62.69	99,633	66.58	99,295	59.13	99,437	64.67	99,362	62.04	99,519	66.71	99,493	60.39	99,573	64.72
20	99,163	57.22	99,343	61.32	99,140	57.87	99,423	61.72	99,009	54.29	99,271	59.77	98,917	57.31	99,349	61.82	99,165	55.58	99,459	59.79
25	98,639	52.51	99,200	56.40	98,688	53.13	99,269	56.81	98,585	49.51	99,121	54.86	98,284	52.66	99,113	56.96	98,832	50.76	99,269	54.90
30	98,214	47.73	99,119	51.45	98,136	48.41	99,067	51.92	97,927	44.83	98,880	49.98	97,693	47.96	98,905	52.08	98,252	46.05	99,000	50.04
35	97,542	43.04	98,845	46.58	97,436	43.74	98,737	47.08	97,029	40.22	98,411	45.21	96,842	43.36	98,555	47.25	97,350	41.45	98,688	45.19
40	96,723	38.38	98,477	41.75	96,553	39.12	98,274	42.29	95,737	35.73	97,782	40.49	95,957	38.74	98,145	42.44	96,212	36.91	98,297	40.36
45	95,562	33.82	97,833	37.01	95,511	34.52	97,687	37.53	94,014	31.34	96,888	35.84	94,997	34.10	97,475	37.71	94,918	32.38	97,408	35.70
50	94,063	29.32	97,075	32.28	94,161	29.98	96,852	32.84	91,776	27.04	95,729	31.24	93,498	29.61	96,518	33.06	92,979	28.00	96,250	31.10
55	91,630	25.03	95,291	27.83	92,041	25.61	95,453	28.28	88,504	22.95	93,802	26.83	91,111	25.32	95,093	28.52	90,288	23.76	94,529	26.62
60	88,462	20.84	93,058	23.44	88,698	21.48	93,318	23.87	84,050	19.03	90,873	22.61	87,310	21.31	92,567	24.23	86,375	19.73	91,447	22.44
65	83,288	16.98	89,623	19.24	84,166	17.50	89,897	19.68	77,134	15.51	86,622	18.60	82,149	17.50	89,292	20.03	80,309	16.03	86,800	18.51
70	76,044	13.36	83,663	15.44	76,576	13.99	84,893	15.70	67,027	12.48	79,692	15.00	74,650	14.00	83,891	16.16	70,944	12.82	80,542	14.75
75	64,957	10.21	75,461	11.84	66,116	10.81	76,483	12.15	54,929	9.67	70,096	11.71	64,117	10.89	76,137	12.55	58,500	10.01	70,994	11.40
80	49,100	7.70	62,687	8.75	51,359	8.20	64,154	9.00	39,750	7.41	57,007	8.83	50,378	8.18	64,423	9.37	43,302	7.64	57,094	8.56
85	31,449	5.62	44,565	6.28	33,229	6.30	46,604	6.45	23,705	5.74	40,109	6.50	32,663	6.26	46,897	6.94	26,584	5.88	38,656	6.45

Table 2 Abridged life table, by sex, age and NHS Board area, Scotland 2008-2010 (continued)

Age x	Lothian				Orkney				Shetland				Tayside				Western Isles			
	Males		Females		Males		Females		Males		Females		Males		Females		Males		Females	
	l_x	e_x^u	l_x	e_x^u	l_x	e_x^u	l_x	e_x^u	l_x	e_x^u	l_x	e_x^u	l_x	e_x^u	l_x	e_x^u	l_x	e_x^u	l_x	e_x^u
0	100,000	77.02	100,000	81.37	100,000	77.30	100,000	81.39	100,000	77.23	100,000	80.65	100,000	76.83	100,000	80.68	100,000	73.97	100,000	81.99
1	99,653	76.29	99,684	80.62	99,380	76.78	99,669	80.66	99,526	76.60	98,397	80.97	99,450	76.25	99,586	80.01	100,000	72.97	100,000	80.99
5	99,568	72.35	99,587	76.70	99,380	72.78	99,339	76.92	99,526	72.60	98,397	76.97	99,373	72.31	99,538	76.05	100,000	68.97	100,000	76.99
10	99,528	67.38	99,562	71.72	99,380	67.78	99,339	71.92	99,024	67.95	98,397	71.97	99,277	67.38	99,471	71.10	99,747	64.14	100,000	71.99
15	99,499	62.40	99,562	66.72	99,380	62.78	99,339	66.92	99,024	62.95	98,397	66.97	99,161	62.45	99,394	66.15	99,747	59.14	99,788	67.14
20	99,304	57.51	99,415	61.81	98,840	58.11	99,339	61.92	98,808	58.09	97,669	62.45	98,710	57.73	99,206	61.27	99,339	54.38	99,550	62.29
25	98,965	52.70	99,247	56.91	97,214	54.04	98,963	57.15	98,283	53.38	97,335	57.65	98,317	52.95	98,924	56.44	98,061	50.05	99,206	57.50
30	98,443	47.97	99,106	51.99	97,214	49.04	98,963	52.15	98,283	48.38	97,024	52.83	97,740	48.24	98,601	51.62	96,856	45.64	98,899	52.67
35	97,892	43.23	98,854	47.12	96,516	44.38	98,963	47.15	98,032	43.50	97,024	47.83	96,794	43.69	98,276	46.78	96,094	40.99	98,656	47.79
40	97,061	38.57	98,485	42.28	95,405	39.87	98,711	42.26	96,950	38.96	96,814	42.93	95,861	39.09	97,661	42.06	94,928	36.46	98,456	42.89
45	96,042	33.96	97,892	37.53	94,043	35.41	97,674	37.68	95,244	34.61	96,616	38.01	94,553	34.60	96,939	37.35	93,807	31.86	98,131	38.02
50	94,514	29.47	96,914	32.88	93,280	30.68	97,053	32.91	93,496	30.21	96,054	33.22	93,069	30.11	95,742	32.79	93,040	27.11	97,474	33.26
55	92,299	25.11	95,332	28.38	92,441	25.93	95,790	28.31	91,301	25.88	93,410	29.09	90,677	25.84	94,098	28.32	90,386	22.83	95,592	28.86
60	88,639	21.05	93,244	23.96	89,750	21.64	93,567	23.92	88,105	21.73	92,175	24.44	87,410	21.71	91,797	23.97	84,859	19.15	92,377	24.78
65	83,276	17.24	89,457	19.87	85,764	17.53	90,123	19.74	83,816	17.71	88,822	20.27	82,601	17.83	88,267	19.82	75,982	16.10	87,953	20.90
70	75,611	13.74	84,092	15.98	79,559	13.70	84,517	15.88	77,082	14.04	84,217	16.24	75,695	14.23	82,715	15.99	67,918	12.71	83,185	16.96
75	64,371	10.70	75,916	12.43	67,393	10.72	78,336	11.94	65,726	11.03	76,469	12.64	64,961	11.17	74,574	12.46	57,419	9.58	77,291	13.06
80	49,802	8.10	63,076	9.45	53,386	7.88	68,357	8.32	52,273	8.23	66,122	9.22	51,860	8.35	62,691	9.35	39,639	7.76	67,596	9.58
85	31,550	6.33	45,915	7.05	36,348	5.40	46,327	6.08	33,645	6.40	50,542	6.29	33,256	6.63	46,252	6.78	26,628	5.32	50,859	6.90

© Crown copyright 2011

1 Please note that the Scotland-level life expectancy estimate shown here is for use only as a comparator for the corresponding sub-Scotland-level figures. The definitive Scotland-level life expectancy estimate (based on interim life tables) is published by the Office for National Statistics: [National Statistics Online - Interim Life tables](#).

Note: This abridged life table is constructed from the estimated population in 2008, 2009 and 2010 and the total number of deaths registered in these years. The column headed l_x shows the numbers who would survive to the exact age of x out of 100,000 persons who, from birth, were subject to the mortality probabilities indicated by the death records for 2008-2010. Column e_x^u shows the expectation of life, that is, the average number of years of life left to persons aged exactly x who are subject to the 2008-2010 mortality probabilities from age x onwards.

Table 3 Abridged life table, by sex, age and Community Health Partnership, Scotland, 2008-2010

Age x	Scotland ¹				Aberdeen City				Aberdeenshire				Angus				Argyll & Bute			
	Males		Females		Males		Females		Males		Females		Males		Females		Males		Females	
	l_x	e_x^o	l_x	e_x^o	l_x	e_x^o	l_x	e_x^o	l_x	e_x^o	l_x	e_x^o	l_x	e_x^o	l_x	e_x^o	l_x	e_x^o	l_x	e_x^o
0	100,000	75.85	100,000	80.43	100,000	76.30	100,000	80.86	100,000	78.15	100,000	81.65	100,000	77.57	100,000	80.26	100,000	77.02	100,000	80.91
1	99,561	75.18	99,653	79.71	99,521	75.67	99,786	80.03	99,657	77.42	99,833	80.79	99,311	77.11	99,559	79.62	99,917	76.09	99,748	80.11
5	99,486	71.23	99,586	75.76	99,491	71.69	99,756	76.05	99,590	73.47	99,833	76.79	99,311	73.11	99,501	75.66	99,754	72.21	99,748	76.11
10	99,425	66.28	99,551	70.79	99,491	66.69	99,756	71.05	99,474	68.55	99,709	71.88	99,257	68.14	99,387	70.75	99,678	67.26	99,669	71.17
15	99,381	61.31	99,493	65.83	99,491	61.69	99,756	66.05	99,453	63.57	99,595	66.96	99,207	63.18	99,334	65.78	99,616	62.30	99,604	66.22
20	99,077	56.49	99,332	60.93	99,249	56.83	99,654	61.12	99,093	58.79	99,369	62.11	98,786	58.44	98,966	61.02	99,215	57.54	99,477	61.30
25	98,649	51.72	99,153	56.04	98,916	52.02	99,557	56.18	98,515	54.12	99,174	57.22	98,185	53.78	98,597	56.24	98,689	52.84	99,312	56.40
30	98,044	47.02	98,942	51.15	98,429	47.26	99,300	51.31	97,987	49.40	99,025	52.31	97,425	49.18	98,056	51.53	98,199	48.09	99,212	51.45
35	97,248	42.39	98,585	46.33	97,625	42.63	99,037	46.44	97,388	44.69	98,720	47.46	96,580	44.59	97,812	46.66	97,444	43.44	98,939	46.58
40	96,257	37.80	98,097	41.55	96,541	38.08	98,487	41.69	96,635	40.01	98,302	42.65	95,705	39.97	97,416	41.84	96,725	38.74	98,576	41.75
45	94,983	33.27	97,373	36.84	95,083	33.62	97,918	36.92	95,841	35.33	97,696	37.90	94,961	35.27	96,513	37.20	95,624	34.16	97,614	37.13
50	93,277	28.83	96,336	32.21	93,399	29.19	97,008	32.24	94,763	30.70	96,814	33.22	93,698	30.71	95,445	32.59	94,438	29.56	96,698	32.46
55	90,720	24.58	94,663	27.73	90,773	24.96	95,263	27.78	93,222	26.16	95,577	28.62	91,218	26.47	93,888	28.09	91,988	25.28	94,775	28.07
60	86,943	20.54	92,182	23.41	87,156	20.89	92,904	23.43	90,321	21.92	93,802	24.12	88,542	22.20	91,571	23.74	88,311	21.23	91,859	23.88
65	81,416	16.76	88,335	19.32	82,383	16.96	89,142	19.31	86,140	17.87	90,397	19.93	84,568	18.12	88,163	19.56	83,107	17.40	88,084	19.80
70	73,137	13.37	82,499	15.51	74,010	13.59	83,559	15.43	78,880	14.28	85,802	15.86	78,206	14.40	82,433	15.75	75,782	13.84	82,539	15.96
75	61,843	10.36	73,802	12.04	62,722	10.59	74,771	11.95	68,972	10.97	77,642	12.27	68,500	11.08	74,556	12.15	65,351	10.65	75,341	12.25
80	47,074	7.83	60,939	9.06	47,804	8.11	62,461	8.82	54,336	8.26	65,227	9.13	54,547	8.28	63,089	8.90	51,041	7.94	63,068	9.14
85	29,598	5.97	43,520	6.68	29,933	6.46	45,261	6.22	35,786	6.24	47,283	6.64	34,578	6.61	46,094	6.26	33,101	5.88	46,423	6.52

Age x	Clackmannanshire				Dumfries & Galloway				Dundee				Dunfermline & West Fife				East Ayrshire			
	Males		Females		Males		Females		Males		Females		Males		Females		Males		Females	
	l_x	e_x^o	l_x	e_x^o	l_x	e_x^o	l_x	e_x^o	l_x	e_x^o	l_x	e_x^o	l_x	e_x^o	l_x	e_x^o	l_x	e_x^o	l_x	e_x^o
0	100,000	75.62	100,000	80.61	100,000	76.70	100,000	81.50	100,000	73.86	100,000	79.23	100,000	76.20	100,000	80.75	100,000	75.39	100,000	79.55
1	99,581	74.93	99,789	79.78	99,465	76.11	99,644	80.80	99,300	73.38	99,613	78.53	99,543	75.55	99,544	80.12	99,531	74.74	99,643	78.83
5	99,581	70.93	99,675	75.87	99,422	72.15	99,508	76.90	99,218	69.44	99,570	74.57	99,506	71.57	99,544	76.12	99,531	70.74	99,590	74.87
10	99,581	65.93	99,675	70.87	99,422	67.15	99,508	71.90	98,986	64.60	99,472	69.64	99,466	66.60	99,544	71.12	99,531	65.74	99,590	69.87
15	99,475	61.00	99,565	65.95	99,422	62.15	99,508	66.90	98,765	59.74	99,284	64.76	99,466	61.60	99,383	66.23	99,484	60.77	99,437	64.97
20	98,976	56.30	99,462	61.01	99,238	57.26	99,352	62.00	98,236	55.05	99,154	59.85	99,282	56.71	99,345	61.26	99,035	56.04	99,226	60.11
25	98,388	51.62	99,000	56.29	98,735	52.54	99,069	57.17	97,762	50.30	98,826	55.04	98,775	51.99	99,148	56.37	98,529	51.31	99,136	55.16
30	97,943	46.84	98,876	51.35	97,581	48.13	98,815	52.32	97,127	45.61	98,438	50.24	98,092	47.33	99,026	51.44	97,962	46.60	98,885	50.29
35	97,337	42.12	98,648	46.47	96,449	43.66	98,566	47.44	95,627	41.29	97,915	45.50	97,177	42.76	98,719	46.59	97,106	41.98	98,531	45.47
40	96,460	37.48	98,466	41.55	95,978	38.86	98,095	42.66	94,468	36.77	97,095	40.86	96,621	37.99	98,283	41.79	95,909	37.48	97,788	40.79
45	94,711	33.12	97,701	36.85	95,001	34.24	97,435	37.93	92,246	32.59	96,234	36.21	95,437	33.43	97,698	37.02	94,534	32.99	97,210	36.02
50	93,052	28.67	96,972	32.11	93,736	29.67	96,635	33.22	90,374	28.22	94,796	31.72	93,699	29.00	96,747	32.36	93,294	28.39	96,044	31.43
55	90,305	24.46	95,047	27.71	91,609	25.30	94,948	28.77	87,357	24.10	92,893	27.32	91,320	24.69	95,589	27.72	90,654	24.15	94,013	27.05
60	87,063	20.28	93,131	23.23	88,473	21.11	92,994	24.32	82,475	20.38	89,863	23.15	87,348	20.70	93,155	23.38	86,280	20.24	90,935	22.88
65	81,183	16.57	89,450	19.08	83,785	17.15	89,793	20.10	76,447	16.79	85,260	19.27	82,199	16.84	89,256	19.29	81,400	16.31	86,609	18.90
70	73,737	12.99	84,390	15.08	76,023	13.64	85,053	16.08	67,985	13.57	78,453	15.72	74,994	13.22	83,898	15.37	72,603	12.98	79,408	15.39
75	62,177	9.94	76,609	11.36	65,760	10.38	77,548	12.39	56,361	10.86	69,766	12.37	64,117	10.04	73,886	12.11	61,313	9.91	70,929	11.93
80	46,679	7.41	60,381	8.74	51,643	7.54	66,055	9.11	43,481	8.33	57,203	9.54	49,617	7.24	60,662	9.20	45,352	7.52	57,469	9.14
85	29,578	5.25	43,704	6.11	32,595	5.48	47,136	6.77	26,047	7.23	41,931	7.10	30,277	5.27	42,365	7.10	28,768	5.41	39,700	7.11

Table 3 Abridged life table, by sex, age and Community Health Partnership, Scotland, 2008-2010 (continued)

Age x	East Dunbartonshire				East Lothian				East Renfrewshire				Edinburgh				Falkirk			
	Males		Females		Males		Females		Males		Females		Males		Females		Males		Females	
	l_x	e_x^o	l_x	e_x^o	l_x	e_x^o	l_x	e_x^o	l_x	e_x^o	l_x	e_x^o	l_x	e_x^o	l_x	e_x^o	l_x	e_x^o	l_x	e_x^o
0	100,000	79.39	100,000	82.70	100,000	77.26	100,000	81.16	100,000	78.27	100,000	82.26	100,000	77.17	100,000	81.85	100,000	76.37	100,000	80.35
1	99,934	78.44	99,343	82.25	99,717	76.48	99,579	80.50	99,491	77.67	99,615	81.58	99,550	76.51	99,644	81.14	99,576	75.69	99,661	79.62
5	99,934	74.44	99,276	78.30	99,662	72.52	99,405	76.64	99,491	73.67	99,615	77.58	99,496	72.55	99,515	77.24	99,504	71.75	99,624	75.65
10	99,934	69.44	99,156	73.40	99,542	67.61	99,344	71.68	99,432	68.71	99,490	72.67	99,480	67.57	99,498	72.25	99,465	66.77	99,584	70.68
15	99,934	64.44	99,156	68.40	99,489	62.64	99,344	66.68	99,380	63.75	99,434	67.71	99,436	62.59	99,498	67.25	99,465	61.77	99,507	65.73
20	99,712	59.58	98,956	63.53	99,231	57.80	99,240	61.75	99,225	58.84	99,264	62.82	99,234	57.72	99,328	62.36	99,242	56.91	99,362	60.83
25	99,466	54.72	98,841	58.60	98,699	53.10	99,240	56.75	98,993	53.98	99,264	57.82	98,940	52.88	99,165	57.46	98,772	52.17	99,247	55.89
30	98,937	50.00	98,703	53.68	97,888	48.52	99,083	51.84	98,309	49.33	99,090	52.92	98,564	48.07	99,043	52.53	98,284	47.41	99,139	50.95
35	97,882	45.51	98,628	48.72	97,010	43.93	98,679	47.04	97,338	44.80	98,583	48.18	98,106	43.29	98,817	47.65	97,632	42.71	98,864	46.09
40	97,516	40.68	98,474	43.79	96,446	39.17	98,401	42.16	96,565	40.14	98,236	43.34	97,212	38.66	98,449	42.81	96,719	38.09	98,437	41.28
45	96,701	36.00	98,011	38.98	95,641	34.48	98,010	37.32	95,751	35.46	97,638	38.59	96,032	34.11	97,807	38.08	95,707	33.47	97,696	36.57
50	95,504	31.42	97,222	34.28	94,088	30.01	97,086	32.65	94,875	30.76	97,073	33.80	94,431	29.64	96,793	33.45	94,293	28.93	96,867	31.86
55	93,391	27.07	95,698	29.79	91,817	25.69	95,641	28.11	93,267	26.25	95,791	29.22	92,200	25.30	95,181	28.98	91,740	24.67	95,087	27.41
60	90,830	22.76	93,868	25.32	88,261	21.63	93,326	23.74	91,012	21.84	93,961	24.74	88,342	21.29	93,134	24.56	88,421	20.50	92,781	23.03
65	85,839	18.94	90,795	21.09	84,190	17.55	89,715	19.60	86,832	17.77	90,657	20.55	82,623	17.59	89,760	20.39	83,260	16.62	89,227	18.85
70	79,476	15.26	85,946	17.14	78,033	13.74	84,239	15.71	79,735	14.13	85,761	16.58	75,104	14.11	84,461	16.51	75,688	13.03	82,834	15.11
75	70,569	11.87	78,537	13.52	66,648	10.66	76,090	12.13	68,876	10.77	78,989	12.79	64,303	11.06	76,961	12.87	64,028	9.95	73,901	11.63
80	58,152	8.87	68,590	10.12	53,342	7.69	63,146	9.10	56,978	7.64	67,585	9.52	50,032	8.50	64,765	9.83	47,469	7.55	60,881	8.59
85	39,539	6.87	51,939	7.56	34,176	5.60	45,967	6.56	35,408	5.78	51,211	6.77	32,286	6.79	48,215	7.34	28,890	5.79	42,066	6.31

Age x	Glasgow City				Glasgow City: North East sector				Glasgow City: North West sector				Glasgow City: South sector				Glenrothes & North East Fife			
	Males		Females		Males		Females		Males		Females		Males		Females		Males		Females	
	l_x	e_x^o	l_x	e_x^o	l_x	e_x^o	l_x	e_x^o	l_x	e_x^o	l_x	e_x^o	l_x	e_x^o	l_x	e_x^o	l_x	e_x^o	l_x	e_x^o
0	100,000	71.65	100,000	77.99	100,000	70.67	100,000	77.58	100,000	72.02	100,000	77.63	100,000	72.16	100,000	78.57	100,000	77.34	100,000	81.75
1	99,455	71.04	99,599	77.30	99,550	69.99	99,649	76.86	99,376	71.47	99,431	77.07	99,445	71.56	99,689	77.81	99,476	76.74	99,722	80.98
5	99,367	67.11	99,486	73.39	99,484	66.03	99,578	72.91	99,308	67.52	99,294	73.18	99,325	67.64	99,562	73.91	99,476	72.74	99,666	77.02
10	99,263	62.17	99,462	68.40	99,288	61.16	99,538	67.94	99,230	62.57	99,254	68.20	99,268	62.68	99,562	68.91	99,367	67.82	99,555	72.11
15	99,196	57.21	99,415	63.43	99,183	56.22	99,538	62.94	99,152	57.61	99,131	63.29	99,240	57.70	99,533	63.93	99,320	62.85	99,456	67.17
20	98,918	52.37	99,285	58.51	98,753	51.46	99,483	57.97	99,002	52.70	99,073	58.32	98,996	52.83	99,262	59.10	98,979	58.06	99,230	62.32
25	98,520	47.57	99,143	53.59	98,246	46.71	99,355	53.04	98,726	47.84	98,981	53.37	98,567	48.05	99,043	54.22	98,831	53.14	99,051	57.43
30	97,938	42.84	98,918	48.71	97,568	42.02	98,995	48.23	98,242	43.06	98,809	48.46	97,960	43.33	98,867	49.31	97,954	48.60	98,754	52.60
35	97,094	38.19	98,401	43.95	96,469	37.47	98,369	43.52	97,427	38.40	98,195	43.75	97,277	38.62	98,511	44.48	97,158	43.97	98,479	47.74
40	95,618	33.74	97,634	39.28	94,953	33.02	97,228	39.00	95,956	33.95	97,650	38.98	95,824	34.17	97,843	39.77	96,610	39.21	98,183	42.87
45	93,337	29.50	96,510	34.71	92,493	28.84	96,083	34.43	93,665	29.72	96,362	34.47	93,688	29.89	96,866	35.14	95,830	34.51	97,425	38.19
50	90,501	25.35	95,185	30.16	89,498	24.72	94,518	29.96	90,744	25.60	95,178	29.86	91,059	25.68	95,623	30.57	94,458	29.97	96,165	33.65
55	86,599	21.38	93,019	25.80	85,340	20.80	92,080	25.69	86,759	21.66	93,064	25.49	87,425	21.64	93,630	26.17	92,069	25.69	94,900	29.07
60	81,170	17.64	89,463	21.73	79,527	17.14	88,041	21.75	81,328	17.94	89,463	21.41	82,301	17.84	90,502	21.98	89,298	21.41	92,895	24.64
65	73,152	14.30	84,494	17.86	70,494	14.01	83,240	17.87	73,596	14.56	84,016	17.64	74,890	14.35	85,792	18.05	84,423	17.50	89,661	20.44
70	61,180	11.61	76,379	14.49	58,130	11.46	75,142	14.52	62,618	11.67	75,605	14.32	62,488	11.71	77,935	14.62	77,042	13.93	84,439	16.55
75	48,268	9.04	65,625	11.45	45,135	9.04	64,294	11.55	49,615	9.08	64,761	11.30	49,817	9.05	67,370	11.52	66,418	10.76	77,434	12.82
80	32,619	7.18	52,497	8.69	29,527	7.50	51,599	8.78	33,628	7.20	51,787	8.51	34,541	6.94	53,757	8.81	52,439	7.97	64,169	9.95
85	18,895	5.59	36,482	6.41	16,742	6.32	35,615	6.59	19,584	5.58	36,326	6.06	20,247	5.08	37,252	6.60	33,830	5.97	47,271	7.62

Table 3 Abridged life table, by sex, age and Community Health Partnership, Scotland, 2008-2010 (continued)

Age x	Inverclyde				Kirkcaldy & Levenmouth				Mid Highland				Midlothian				Moray			
	Males		Females		Males		Females		Males		Females		Males		Females		Males		Females	
	l_x	e_x^o	l_x	e_x^o	l_x	e_x^o	l_x	e_x^o	l_x	e_x^o	l_x	e_x^o	l_x	e_x^o	l_x	e_x^o	l_x	e_x^o	l_x	e_x^o
0	100,000	72.98	100,000	79.15	100,000	75.17	100,000	79.47	100,000	77.08	100,000	81.65	100,000	76.61	100,000	81.44	100,000	76.89	100,000	81.27
1	99,407	72.41	99,397	78.63	99,153	74.81	99,307	79.03	99,601	76.39	99,851	80.77	99,867	75.71	99,930	80.50	99,672	76.14	99,720	80.50
5	99,407	68.41	98,987	74.94	99,036	70.89	99,247	75.07	99,466	72.49	99,851	76.77	99,662	71.86	99,930	76.50	99,537	72.24	99,646	76.55
10	99,407	63.41	98,905	70.00	98,973	65.94	99,247	70.07	99,399	67.54	99,780	71.82	99,591	66.91	99,930	71.50	99,463	67.29	99,646	71.55
15	99,269	58.50	98,905	65.00	98,973	60.94	99,247	65.07	99,340	62.58	99,657	66.91	99,591	61.91	99,930	66.50	99,404	62.33	99,517	66.64
20	98,768	53.78	98,436	60.30	98,811	56.03	99,190	60.11	98,813	57.90	99,397	62.08	99,470	56.98	99,930	61.50	99,079	57.53	99,080	61.93
25	98,234	49.06	98,371	55.34	98,343	51.29	98,971	55.24	98,189	53.25	99,138	57.23	99,012	52.24	99,861	56.54	98,559	52.82	98,771	57.11
30	97,414	44.45	97,946	50.57	97,530	46.70	98,794	50.33	97,795	48.45	98,796	52.42	97,794	47.86	99,476	51.75	97,657	48.28	98,683	52.16
35	96,434	39.88	97,545	45.77	96,611	42.12	97,945	45.75	97,270	43.70	98,494	47.58	97,267	43.10	99,251	46.86	97,089	43.55	98,050	47.48
40	94,968	35.45	96,985	41.02	95,162	37.72	97,073	41.13	96,193	39.16	98,046	42.78	96,424	38.46	98,849	42.04	96,358	38.86	97,661	42.66
45	93,665	30.91	96,451	36.23	93,519	33.34	96,307	36.44	95,335	34.49	97,642	37.95	95,602	33.77	98,320	37.25	95,511	34.18	97,089	37.90
50	91,612	26.55	95,432	31.59	91,232	29.11	94,891	31.95	93,613	30.08	96,579	33.34	94,296	29.20	97,465	32.55	94,113	29.65	96,562	33.09
55	87,546	22.67	93,392	27.23	88,890	24.81	93,444	27.40	91,139	25.83	95,568	28.67	92,186	24.81	95,993	28.02	91,450	25.45	95,477	28.44
60	82,591	18.88	90,203	23.10	85,110	20.80	90,684	23.16	87,447	21.82	93,232	24.32	88,348	20.78	94,565	23.40	87,417	21.50	92,770	24.20
65	74,997	15.53	86,735	18.92	80,667	16.81	86,329	19.20	82,060	18.08	90,649	19.94	83,860	16.76	90,558	19.33	82,376	17.67	89,967	19.87
70	65,834	12.35	80,171	15.27	73,490	13.21	81,102	15.28	75,476	14.44	85,578	15.98	76,653	13.10	85,641	15.29	75,362	14.08	85,061	15.87
75	54,548	9.39	72,125	11.69	62,100	10.17	71,677	11.96	65,236	11.32	77,748	12.33	65,011	10.00	77,014	11.73	65,259	10.87	76,899	12.29
80	40,330	6.81	58,599	8.82	46,850	7.67	57,915	9.21	51,718	8.62	65,545	9.16	48,859	7.47	62,851	8.80	50,938	8.22	64,855	9.11
85	22,873	5.11	41,113	6.50	30,824	5.36	40,293	7.14	33,741	6.88	46,311	6.93	28,287	6.09	44,977	6.31	33,680	6.16	47,617	6.50

Age x	North Ayrshire				North Highland				North Lanarkshire				Orkney				Perth & Kinross			
	Males		Females		Males		Females		Males		Females		Males		Females		Males		Females	
	l_x	e_x^o	l_x	e_x^o	l_x	e_x^o	l_x	e_x^o	l_x	e_x^o	l_x	e_x^o	l_x	e_x^o	l_x	e_x^o	l_x	e_x^o	l_x	e_x^o
0	100,000	75.03	100,000	79.53	100,000	77.03	100,000	81.02	100,000	74.28	100,000	78.75	100,000	77.30	100,000	81.39	100,000	79.06	100,000	82.34
1	99,514	74.40	99,410	79.01	99,654	76.30	99,466	80.46	99,524	73.63	99,669	78.01	99,380	76.78	99,669	80.66	99,736	78.27	99,577	81.69
5	99,385	70.49	99,318	75.08	99,654	72.30	99,466	76.46	99,460	69.68	99,617	74.05	99,380	72.78	99,339	76.92	99,601	74.37	99,529	77.73
10	99,385	65.49	99,318	70.08	99,654	67.30	99,466	71.46	99,460	64.68	99,599	69.06	99,380	67.78	99,339	71.92	99,601	69.37	99,529	72.73
15	99,344	60.52	99,318	65.08	99,654	62.30	99,310	66.56	99,428	59.70	99,532	64.11	99,380	62.78	99,339	66.92	99,523	64.42	99,529	67.73
20	98,949	55.75	99,279	60.10	99,255	57.54	99,310	61.56	99,076	54.90	99,417	59.18	98,840	58.11	99,339	61.92	99,130	59.67	99,408	62.81
25	98,364	51.07	99,032	55.24	98,750	52.82	99,093	56.69	98,722	50.09	99,212	54.30	97,214	54.04	98,963	57.15	98,966	54.76	99,255	57.90
30	97,751	46.37	98,851	50.34	98,169	48.12	99,093	51.69	98,131	45.37	98,942	49.44	97,214	49.04	98,963	52.15	98,570	49.97	99,168	52.95
35	96,704	41.85	98,298	45.61	97,603	43.38	98,687	46.90	97,211	40.78	98,549	44.63	96,516	44.38	98,963	47.15	98,200	45.15	99,020	48.03
40	95,592	37.30	97,693	40.88	97,450	38.45	98,105	42.16	96,011	36.26	98,043	39.84	95,405	39.87	98,711	42.26	97,437	40.48	98,422	43.30
45	94,083	32.86	96,959	36.17	96,848	33.67	97,647	37.34	94,722	31.72	97,084	35.21	94,043	35.41	97,674	37.68	96,471	35.87	97,962	38.49
50	92,247	28.47	95,786	31.58	94,856	29.32	96,807	32.65	92,675	27.36	95,915	30.61	93,280	30.68	97,053	32.91	95,148	31.33	96,899	33.89
55	89,665	24.21	93,840	27.18	92,433	25.03	95,362	28.10	89,607	23.21	94,007	26.18	92,441	25.93	95,790	28.31	93,416	26.86	95,422	29.37
60	85,475	20.28	91,642	22.78	88,583	21.01	93,253	23.68	85,361	19.25	90,647	22.06	89,750	21.64	93,567	23.92	91,068	22.49	93,744	24.86
65	79,169	16.69	87,454	18.75	83,911	17.04	89,949	19.46	78,939	15.61	85,712	18.19	85,764	17.53	90,123	19.74	86,640	18.51	91,029	20.52
70	70,780	13.38	81,337	14.97	75,919	13.57	85,211	15.40	69,336	12.42	79,223	14.47	79,559	13.70	84,517	15.88	80,805	14.67	86,704	16.42
75	60,108	10.31	72,103	11.56	64,088	10.61	75,741	12.02	56,715	9.63	69,417	11.16	67,393	10.72	78,336	11.94	70,298	11.49	78,992	12.78
80	45,616	7.79	58,551	8.66	49,293	8.04	63,126	8.92	40,911	7.39	55,042	8.42	53,386	7.88	68,357	8.32	57,899	8.41	67,772	9.48
85	28,854	5.86	41,052	6.29	31,779	6.10	45,656	6.38	24,237	5.75	36,523	6.43	36,348	5.40	46,327	6.08	39,706	6.12	50,599	6.85

Table 3 Abridged life table, by sex, age and Community Health Partnership, Scotland, 2008-2010 (continued)

Age x	Renfrewshire				Scottish Borders				Shetland				South Ayrshire				South East Highland			
	Males		Females		Males		Females		Males		Females		Males		Females		Males		Females	
	l_x	e_x^u	l_x	e_x^u	l_x	e_x^u	l_x	e_x^u	l_x	e_x^u	l_x	e_x^u	l_x	e_x^u	l_x	e_x^u	l_x	e_x^u	l_x	e_x^u
0	100,000	73.82	100,000	79.51	100,000	77.49	100,000	81.24	100,000	77.23	100,000	80.65	100,000	76.36	100,000	81.13	100,000	75.60	100,000	81.75
1	99,171	73.43	99,789	78.68	99,826	76.63	99,615	80.55	99,526	76.60	98,397	80.97	99,575	75.69	99,744	80.34	99,543	74.95	99,562	81.11
5	99,069	69.51	99,789	74.68	99,661	72.75	99,558	76.60	99,526	72.60	98,397	76.97	99,514	71.73	99,682	76.39	99,362	71.08	99,431	77.21
10	99,069	64.51	99,789	69.68	99,554	67.82	99,558	71.60	99,024	67.95	98,397	71.97	99,337	66.85	99,682	71.39	99,103	66.26	99,431	72.21
15	99,069	59.51	99,789	64.68	99,405	62.92	99,507	66.63	99,024	62.95	98,397	66.97	99,337	61.85	99,573	66.46	99,103	61.26	99,431	67.21
20	98,737	54.70	99,694	59.74	99,112	58.10	99,308	61.76	98,808	58.09	97,669	62.45	99,048	57.03	99,420	61.56	98,676	56.51	99,234	62.34
25	98,120	50.03	99,478	54.86	98,574	53.40	99,121	56.87	98,283	53.38	97,335	57.65	98,461	52.35	99,314	56.62	97,873	51.96	98,951	57.51
30	97,124	45.51	99,163	50.03	97,656	48.88	98,840	52.03	98,283	48.38	97,024	52.83	97,994	47.59	99,189	51.69	97,045	47.38	98,713	52.64
35	95,963	41.03	98,708	45.25	96,847	44.27	98,520	47.19	98,032	43.50	97,024	47.83	97,247	42.94	98,681	46.94	95,769	42.98	98,289	47.86
40	94,724	36.54	98,354	40.40	96,092	39.60	98,000	42.42	96,950	38.96	96,814	42.93	96,533	38.24	98,352	42.09	94,641	38.46	97,936	43.02
45	93,446	32.00	97,615	35.69	95,231	34.93	97,360	37.69	95,244	34.61	96,616	38.01	95,241	33.72	97,844	37.30	93,577	33.87	97,188	38.34
50	91,519	27.62	96,466	31.08	94,189	30.29	96,700	32.93	93,496	30.21	96,054	33.22	93,629	29.26	96,804	32.67	92,211	29.33	96,253	33.68
55	88,592	23.45	94,592	26.65	92,373	25.84	95,164	28.42	91,301	25.88	93,410	29.09	91,236	24.96	95,125	28.20	89,995	24.99	94,879	29.14
60	85,040	19.33	91,823	22.38	88,988	21.73	93,459	23.89	88,105	21.73	92,175	24.44	87,799	20.84	92,826	23.84	85,895	21.07	92,362	24.86
65	78,435	15.75	87,688	18.31	84,748	17.69	90,393	19.62	83,816	17.71	88,822	20.27	82,902	16.92	89,100	19.73	80,783	17.24	88,914	20.73
70	68,634	12.64	80,868	14.65	78,541	13.89	85,650	15.56	77,082	14.04	84,217	16.24	73,941	13.67	83,889	15.80	72,208	13.99	82,981	17.03
75	57,004	9.71	71,791	11.18	68,618	10.54	77,906	11.86	65,726	11.03	76,469	12.64	63,143	10.58	75,546	12.27	61,820	10.93	75,540	13.46
80	41,129	7.49	57,147	8.41	54,129	7.69	64,650	8.78	52,273	8.23	66,122	9.22	48,764	7.96	62,062	9.40	49,009	8.13	65,499	10.14
85	25,071	5.68	39,106	6.13	34,916	5.54	46,850	6.17	33,645	6.40	50,542	6.29	31,689	5.91	45,709	6.86	31,660	6.21	48,650	7.79

Table 3 Abridged life table, by sex, age and Community Health Partnership, Scotland 2008-2010 (continued)

Age x	South Lanarkshire				Stirling				West Dunbartonshire				West Lothian				Western Isles			
	Males		Females		Males		Females		Males		Females		Males		Females		Males		Females	
	l_x	e_x^u	l_x	e_x^u	l_x	e_x^u	l_x	e_x^u	l_x	e_x^u	l_x	e_x^u	l_x	e_x^u	l_x	e_x^u	l_x	e_x^u	l_x	e_x^u
0	100,000	75.76	100,000	80.24	100,000	77.82	100,000	81.92	100,000	73.61	100,000	78.29	100,000	76.20	100,000	79.99	100,000	73.97	100,000	81.99
1	99,832	74.88	99,811	79.39	99,557	77.17	99,537	81.30	99,578	72.92	99,756	77.48	99,771	75.37	99,730	79.21	100,000	72.97	100,000	80.99
5	99,739	70.95	99,772	75.42	99,488	73.22	99,537	77.30	99,516	68.97	99,691	73.53	99,655	71.46	99,700	75.23	100,000	68.97	100,000	76.99
10	99,680	65.99	99,733	70.45	99,422	68.27	99,537	72.30	99,446	64.01	99,620	68.58	99,623	66.48	99,668	70.26	99,747	64.14	100,000	71.99
15	99,591	61.05	99,659	65.50	99,422	63.27	99,476	67.34	99,384	59.05	99,355	63.76	99,623	61.48	99,668	65.26	99,747	59.14	99,788	67.14
20	99,312	56.21	99,554	60.57	99,128	58.45	99,241	62.50	99,060	54.24	99,063	58.94	99,449	56.58	99,482	60.37	99,339	54.38	99,550	62.29
25	98,962	51.40	99,391	55.66	98,566	53.77	99,194	57.53	98,553	49.50	98,742	54.12	99,088	51.78	99,163	55.56	98,061	50.05	99,206	57.50
30	98,327	46.72	99,156	50.79	98,277	48.92	99,194	52.53	97,940	44.80	98,411	49.30	98,233	47.21	99,033	50.63	96,856	45.64	98,899	52.67
35	97,485	42.10	98,969	45.88	97,505	44.28	98,895	47.68	97,105	40.16	97,717	44.63	97,434	42.57	98,748	45.77	96,094	40.99	98,656	47.79
40	96,421	37.54	98,613	41.04	96,928	39.53	98,474	42.87	95,840	35.66	96,815	40.02	96,654	37.90	98,366	40.94	94,928	36.46	98,456	42.89
45	95,107	33.02	97,818	36.35	95,864	34.94	98,073	38.03	94,209	31.23	95,831	35.41	95,825	33.20	97,748	36.18	93,807	31.86	98,131	38.02
50	93,364	28.59	96,663	31.76	94,319	30.48	97,422	33.27	91,583	27.05	94,441	30.89	94,400	28.67	96,770	31.52	93,040	27.11	97,474	33.26
55	91,054	24.25	95,270	27.18	92,228	26.11	95,732	28.82	88,417	22.93	92,064	26.63	92,227	24.28	95,128	27.02	90,386	22.83	95,592	28.86
60	87,448	20.15	92,548	22.91	89,379	21.86	93,449	24.46	83,553	19.12	89,771	22.24	89,129	20.04	92,706	22.66	84,859	19.15	92,377	24.78
65	81,784	16.37	88,194	18.92	84,645	17.95	90,379	20.20	76,721	15.60	85,951	18.12	83,396	16.25	87,947	18.75	75,982	16.10	87,953	20.90
70	72,769	13.09	82,179	15.12	77,959	14.27	84,648	16.40	67,681	12.35	79,640	14.36	74,268	12.94	82,295	14.87	67,918	12.71	83,185	16.96
75	60,111	10.32	72,753	11.75	68,298	10.94	77,532	12.68	55,223	9.58	70,001	10.99	62,325	9.94	72,510	11.54	57,419	9.58	77,291	13.06
80	45,615	7.81	59,534	8.81	53,554	8.26	66,936	9.29	40,277	7.20	56,422	8.03	46,852	7.39	58,379	8.72	39,639	7.76	67,596	9.58
85	28,473	6.01	41,510	6.55	37,697	5.68	49,619	6.66	22,973	5.75	37,208	5.89	29,081	5.38	39,113	6.79	26,628	5.32	50,859	6.90

© Crown copyright 2011

1 Please note that the Scotland-level life expectancy estimate shown here is for use only as a comparator for the corresponding sub-Scotland-level figures. The definitive Scotland-level life expectancy estimate (based on interim life tables) is published by the Office for National Statistics: [National Statistics Online - Interim Life tables](http://www.statistics.gov.uk/life-tables).

Note: This abridged life table is constructed from the estimated population in 2008, 2009 and 2010 and the total number of deaths registered in these years. The column headed l_x shows the numbers who would survive to the exact age of x out of 100,000 persons who, from birth, were subject to the mortality probabilities indicated by the death records for 2008-2010. Column e_x^u shows the expectation of life, that is, the average number of years of life left to persons aged exactly x who are subject to the 2008-2010 mortality probabilities from age x onwards.

Table 4 Abridged life table, by sex, age and 2010 Urban Rural 6-fold classification, Scotland, 2008-2010

Age x	Scotland ¹				Large Urban Areas				Other Urban Areas				Accessible Small Towns				Remote Small Towns			
	Males		Females		Males		Females		Males		Females		Males		Females		Males		Females	
	l_x	e_x^u	l_x	e_x^u	l_x	e_x^u	l_x	e_x^u	l_x	e_x^u	l_x	e_x^u	l_x	e_x^u	l_x	e_x^u	l_x	e_x^u	l_x	e_x^u
0	100,000	75.85	100,000	80.43	100,000	74.50	100,000	79.77	100,000	75.68	100,000	80.20	100,000	77.02	100,000	80.79	100,000	74.97	100,000	80.30
1	99,561	75.18	99,653	79.71	99,477	73.89	99,649	79.05	99,606	74.97	99,634	79.49	99,586	76.34	99,559	80.14	99,488	74.36	99,706	79.53
5	99,486	71.23	99,586	75.76	99,409	69.94	99,572	75.11	99,521	71.04	99,567	75.54	99,545	72.37	99,530	76.17	99,328	70.47	99,672	75.56
10	99,425	66.28	99,551	70.79	99,357	64.97	99,537	70.13	99,456	66.08	99,527	70.57	99,518	67.39	99,516	71.18	99,260	65.52	99,672	70.56
15	99,381	61.31	99,493	65.83	99,307	60.00	99,491	65.17	99,414	61.11	99,483	65.60	99,458	62.43	99,414	66.25	99,177	60.57	99,583	65.62
20	99,077	56.49	99,332	60.93	99,034	55.16	99,346	60.26	99,133	56.27	99,308	60.71	99,159	57.61	99,292	61.33	98,811	55.79	99,386	60.75
25	98,649	51.72	99,153	56.04	98,654	50.37	99,182	55.35	98,698	51.51	99,126	55.82	98,682	52.87	99,056	56.46	98,167	51.14	99,126	55.90
30	98,044	47.02	98,942	51.15	98,117	45.63	98,965	50.47	97,975	46.87	98,920	50.93	98,141	48.15	98,799	51.61	97,377	46.53	98,981	50.98
35	97,248	42.39	98,585	46.33	97,315	40.98	98,586	45.65	97,083	42.28	98,519	46.13	97,385	43.50	98,457	46.78	96,326	42.01	98,702	46.11
40	96,257	37.80	98,097	41.55	96,111	36.47	98,012	40.91	96,143	37.67	98,087	41.32	96,522	38.87	98,033	41.97	95,082	37.53	98,079	41.39
45	94,983	33.27	97,373	36.84	94,457	32.06	97,164	36.24	94,915	33.12	97,363	36.61	95,476	34.27	97,344	37.25	93,977	32.94	97,415	36.66
50	93,277	28.83	96,336	32.21	92,340	27.74	96,023	31.64	93,251	28.67	96,295	31.99	94,064	29.75	96,420	32.58	92,187	28.53	96,314	32.05
55	90,720	24.58	94,663	27.73	89,326	23.59	94,140	27.23	90,614	24.43	94,602	27.52	91,948	25.37	94,913	28.06	89,504	24.31	94,554	27.60
60	86,943	20.54	92,182	23.41	84,943	19.68	91,286	23.00	86,868	20.38	92,087	23.20	88,775	21.19	92,708	23.67	85,155	20.42	91,907	23.32
65	81,416	16.76	88,335	19.32	78,494	16.09	87,108	18.98	81,224	16.62	88,096	19.14	83,971	17.26	89,060	19.53	80,097	16.56	87,788	19.30
70	73,137	13.37	82,499	15.51	68,952	12.97	80,459	15.34	73,099	13.19	82,193	15.33	76,066	13.79	83,698	15.62	72,044	13.13	82,262	15.42
75	61,843	10.36	73,802	12.04	57,135	10.13	71,360	11.98	61,509	10.21	73,312	11.89	65,242	10.67	75,322	12.08	60,778	10.10	73,624	11.94
80	47,074	7.83	60,939	9.06	42,360	7.80	58,497	9.07	46,584	7.67	59,932	8.98	50,547	8.04	62,319	9.08	46,029	7.53	60,972	8.90
85	29,598	5.97	43,520	6.68	25,818	6.19	41,703	6.71	29,137	5.77	42,138	6.72	32,552	6.11	45,258	6.56	29,513	5.35	43,983	6.37

Age x	Accessible Rural				Remote Rural			
	Males		Females		Males		Females	
	l_x	e_x^o	l_x	e_x^o	l_x	e_x^o	l_x	e_x^o
0	100,000	78.29	100,000	81.83	100,000	78.00	100,000	82.21
1	99,686	77.53	99,725	81.05	99,681	77.25	99,757	81.41
5	99,648	73.56	99,657	77.11	99,540	73.36	99,692	77.46
10	99,584	68.61	99,607	72.14	99,406	68.45	99,653	72.49
15	99,567	63.62	99,528	67.20	99,374	63.47	99,585	67.54
20	99,209	58.84	99,346	62.32	98,908	58.76	99,407	62.66
25	98,787	54.08	99,220	57.39	98,240	54.14	99,100	57.84
30	98,156	49.41	99,019	52.51	97,662	49.45	98,945	52.93
35	97,628	44.67	98,784	47.63	97,074	44.73	98,743	48.03
40	97,086	39.90	98,363	42.82	96,400	40.03	98,373	43.20
45	96,309	35.20	97,872	38.02	95,674	35.31	97,827	38.43
50	95,171	30.60	97,064	33.32	94,548	30.70	96,972	33.75
55	93,399	26.13	95,763	28.73	92,765	26.25	95,652	29.18
60	90,417	21.91	93,966	24.24	89,870	22.01	93,590	24.77
65	86,197	17.86	90,580	20.05	85,256	18.07	90,829	20.44
70	79,404	14.17	85,810	16.02	78,547	14.40	86,388	16.37
75	69,488	10.84	77,954	12.39	68,558	11.13	79,146	12.63
80	55,248	7.99	66,256	9.13	54,833	8.29	67,669	9.35
85	36,307	5.85	47,761	6.70	36,245	6.26	50,080	6.76

¹ Please note that the Scotland-level life expectancy estimate shown here is for use only as a comparator for the corresponding sub-Scotland-level figures. The definitive Scotland-level life expectancy estimate (based on interim life tables) is published by the Office for National Statistics:

[National Statistics Online - Interim Life tables](#)

Note: This abridged life table is constructed from the estimated population in 2008, 2009 and 2010 and the total number of deaths registered in these years. The column headed l_x shows the numbers who would survive to the exact age of x out of 100,000 persons who, from birth, were subject to the mortality probabilities indicated by the death records for 2008-2010. Column e_x^o shows the expectation of life, that is, the average number of years of life left to persons aged exactly x who are subject to the 2008-2010 mortality probabilities from age x onwards.

Table 5 Abridged life table, by sex, age and SIMD2009 deprivation decile, Scotland, 2008-2010

Age x	Scotland ¹				1 (Most Deprived)				2				3				4			
	Males		Females		Males		Females		Males		Females		Males		Females		Males		Females	
	l_x	e_x^o	l_x	e_x^o	l_x	e_x^o	l_x	e_x^o	l_x	e_x^o	l_x	e_x^o	l_x	e_x^o	l_x	e_x^o	l_x	e_x^o	l_x	e_x^o
0	100,000	75.85	100,000	80.43	100,000	68.25	100,000	75.67	100,000	71.63	100,000	77.57	100,000	72.96	100,000	78.82	100,000	74.58	100,000	79.32
1	99,561	75.18	99,653	79.71	99,458	67.62	99,559	75.01	99,626	70.90	99,638	76.85	99,427	72.38	99,652	78.09	99,421	74.01	99,513	78.71
5	99,486	71.23	99,586	75.76	99,394	63.66	99,423	71.11	99,564	66.94	99,561	72.91	99,313	68.46	99,580	74.15	99,339	70.07	99,476	74.74
10	99,425	66.28	99,551	70.79	99,317	58.71	99,388	66.13	99,504	61.98	99,524	67.93	99,235	63.51	99,527	69.19	99,287	65.11	99,435	69.77
15	99,381	61.31	99,493	65.83	99,229	53.76	99,318	61.18	99,457	57.01	99,513	62.94	99,187	58.54	99,463	64.23	99,252	60.13	99,335	64.84
20	99,077	56.49	99,332	60.93	98,800	48.98	99,097	56.31	98,985	52.27	99,314	58.06	98,797	53.76	99,321	59.32	98,916	55.32	99,114	59.98
25	98,649	51.72	99,153	56.04	98,022	44.35	98,806	51.47	98,480	47.53	99,026	53.22	98,176	49.09	99,103	54.44	98,487	50.55	98,934	55.08
30	98,044	47.02	98,942	51.15	96,737	39.91	98,322	46.71	97,636	42.91	98,666	48.41	97,442	44.44	98,945	49.52	97,937	45.82	98,698	50.21
35	97,248	42.39	98,585	46.33	94,845	35.65	97,526	42.07	96,404	38.43	98,118	43.66	96,345	39.91	98,547	44.71	97,083	41.20	98,305	45.40
40	96,257	37.80	98,097	41.55	92,388	31.54	96,485	37.49	94,748	34.06	97,321	39.00	95,031	35.43	97,908	39.99	96,078	36.61	97,839	40.60
45	94,983	33.27	97,373	36.84	89,008	27.64	95,127	32.99	92,491	29.83	96,096	34.47	93,179	31.09	96,992	35.34	94,557	32.16	97,063	35.91
50	93,277	28.83	96,336	32.21	85,045	23.81	93,262	28.60	89,503	25.74	94,396	30.04	91,082	26.74	95,690	30.79	92,525	27.81	95,871	31.32
55	90,720	24.58	94,663	27.73	79,713	20.24	90,365	24.44	85,369	21.87	91,877	25.80	87,569	22.72	93,541	26.44	89,714	23.60	93,775	26.97
60	86,943	20.54	92,182	23.41	72,568	16.98	85,444	20.70	79,763	18.23	88,003	21.82	82,665	18.92	90,679	22.20	85,211	19.72	90,940	22.73
65	81,416	16.76	88,335	19.32	63,656	14.01	79,439	17.08	72,131	14.89	82,529	18.10	75,587	15.45	85,409	18.41	78,985	16.08	86,668	18.73
70	73,137	13.37	82,499	15.51	52,037	11.58	70,172	14.01	61,656	12.00	75,309	14.60	65,789	12.38	78,337	14.85	70,136	12.79	80,377	15.00
75	61,843	10.36	73,802	12.04	39,634	9.42	59,279	11.12	49,213	9.40	64,999	11.52	53,816	9.58	68,258	11.67	58,144	9.91	71,117	11.62
80	47,074	7.83	60,939	9.06	26,973	7.67	45,925	8.63	34,790	7.26	51,318	8.93	39,039	7.26	55,094	8.86	42,404	7.66	57,485	8.79
85	29,598	5.97	43,520	6.68	15,287	6.62	30,415	6.75	20,156	5.71	35,249	6.85	23,263	5.49	38,581	6.59	26,251	5.84	39,729	6.60

Age x	5				6				7				8				9			
	Males		Females		Males		Females		Males		Females		Males		Females		Males		Females	
	l_x	e_x^o	l_x	e_x^o	l_x	e_x^o	l_x	e_x^o	l_x	e_x^o	l_x	e_x^o	l_x	e_x^o	l_x	e_x^o	l_x	e_x^o	l_x	e_x^o
0	100,000	75.71	100,000	80.15	100,000	76.79	100,000	80.92	100,000	78.24	100,000	82.06	100,000	79.18	100,000	82.27	100,000	80.33	100,000	83.50
1	99,511	75.08	99,629	79.45	99,585	76.11	99,697	80.17	99,519	77.62	99,633	81.36	99,707	78.41	99,695	81.52	99,702	79.57	99,811	82.66
5	99,475	71.11	99,579	75.49	99,488	72.19	99,646	76.21	99,414	73.70	99,584	77.40	99,674	74.43	99,660	77.55	99,630	75.62	99,738	78.72
10	99,399	66.16	99,540	70.52	99,373	67.27	99,619	71.23	99,390	68.71	99,558	72.42	99,583	69.50	99,624	72.58	99,596	70.65	99,738	73.72
15	99,319	61.21	99,467	65.57	99,328	62.30	99,491	66.32	99,369	63.73	99,502	67.46	99,531	64.53	99,613	67.59	99,586	65.65	99,694	68.75
20	98,967	56.42	99,293	60.68	98,969	57.51	99,326	61.42	99,124	58.88	99,329	62.57	99,321	59.67	99,468	62.68	99,448	60.74	99,603	63.81
25	98,551	51.65	99,121	55.78	98,564	52.74	99,179	56.51	98,697	54.12	99,134	57.69	99,027	54.84	99,317	57.77	99,250	55.86	99,562	58.83
30	98,057	46.89	98,968	50.86	97,903	48.08	98,964	51.63	98,221	49.37	99,042	52.74	98,710	50.00	99,191	52.84	99,015	50.98	99,468	53.89
35	97,453	42.17	98,635	46.03	97,362	43.33	98,720	46.75	97,759	44.59	98,873	47.83	98,195	45.25	98,972	47.95	98,723	46.13	99,259	48.99
40	96,595	37.52	98,225	41.21	96,619	38.64	98,344	41.92	97,139	39.86	98,437	43.03	97,630	40.50	98,662	43.10	98,248	41.34	99,050	44.09
45	95,430	32.95	97,510	36.49	95,620	34.02	97,681	37.19	96,326	35.18	97,948	38.23	97,118	35.70	98,289	38.25	97,752	36.54	98,591	39.29
50	93,980	28.42	96,482	31.85	94,309	29.46	96,728	32.53	95,094	30.60	97,225	33.49	96,089	31.06	97,589	33.51	96,828	31.86	97,964	34.52
55	91,311	24.18	94,647	27.42	91,992	25.14	95,145	28.03	93,394	26.11	96,078	28.86	94,515	26.53	96,437	28.88	95,422	27.29	97,006	29.84
60	87,371	20.15	92,086	23.12	88,751	20.97	92,954	23.63	90,677	21.82	94,403	24.33	91,927	22.21	94,424	24.44	93,317	22.85	95,563	25.25
65	81,731	16.37	88,155	19.03	83,445	17.14	89,525	19.44	86,195	17.83	91,200	20.10	88,220	18.04	91,433	20.16	89,746	18.66	93,084	20.86
70	73,562	12.91	82,462	15.18	76,099	13.55	84,279	15.49	79,171	14.18	86,004	16.15	81,955	14.22	87,108	16.03	83,617	14.85	88,920	16.72
75	61,611	9.93	73,376	11.75	65,719	10.30	75,651	11.97	68,796	10.95	78,716	12.42	72,174	10.81	80,217	12.20	73,700	11.51	82,062	12.90
80	46,308	7.39	59,725	8.86	50,520	7.65	63,374	8.81	54,335	8.20	66,457	9.25	57,811	7.88	68,457	8.86	60,078	8.55	70,309	9.64
85	27,603	5.70	42,642	6.41	30,789	5.94	45,262	6.33	35,844	6.13	48,344	6.79	38,240	5.63	49,642	6.27	40,679	6.43	52,627	7.04

Table 5 Abridged life table, by sex, age and SIMD2009 deprivation decile, Scotland, 2008-2010 (continued)

Age x	10 (Least Deprived)			
	Males		Females	
	l_x	e_x^u	l_x	e_x^u
0	100,000	81.38	100,000	84.64
1	99,730	80.60	99,775	83.83
5	99,642	76.67	99,709	79.89
10	99,631	71.67	99,647	74.94
15	99,610	66.69	99,614	69.96
20	99,468	61.78	99,528	65.02
25	99,293	56.89	99,451	60.07
30	99,038	52.03	99,394	55.10
35	98,773	47.16	99,210	50.20
40	98,316	42.37	98,962	45.32
45	97,899	37.54	98,548	40.50
50	97,094	32.83	97,984	35.72
55	96,062	28.15	97,113	31.01
60	94,104	23.69	95,822	26.40
65	90,856	19.44	93,664	21.95
70	85,288	15.55	90,018	17.74
75	76,996	11.95	84,522	13.73
80	63,996	8.88	74,564	10.23
85	45,157	6.53	57,792	7.47

© Crown copyright 2011

¹ Please note that the Scotland-level life expectancy estimate shown here is for use only as a comparator for the corresponding sub-Scotland-level figures. The definitive Scotland-level life expectancy estimate (based on interim life tables) is published by the Office for National Statistics: [National Statistics Online - Interim Life tables](#).

Note: This abridged life table is constructed from the estimated population in 2008, 2009 and 2010 and the total number of deaths registered in these years. The column headed l_x shows the numbers who would survive to the exact age of x out of 100,000 persons who, from birth, were subject to the mortality probabilities indicated by the death records for 2008-2010. Column e_x^u shows the expectation of life, that is, the average number of years of life left to persons aged exactly x who are subject to the 2008-2010 mortality probabilities from age x onwards.

Table 6 Life expectancy at birth in Scotland, 2008-2010, by Council and NHS Board area and comparisons with 1998-2000 and 2003-2005

(Males)

	2008- 2010	2003- 2005	1998- 2000	2008- 2010	2003- 2005	1998- 2000	Change over 5 years	Change over 10 years	Change over 5 years (%)	Change over 10 years (%)
	Years ¹	Years ¹	Years ¹	Rank	Rank	Rank	(Years)	(Years)	years (%)	years (%)
Scotland	75.8	74.2	72.9	-	-	-	1.6	3.0	2.2	4.1
Council areas										
Aberdeen City	76.3	74.9	73.8	20	19	16	1.4	2.5	1.9	3.3
Aberdeenshire	78.2	76.7	75.2	4	3	4	1.4	3.0	1.9	4.0
Angus	77.6	75.8	74.7	6	9	7	1.8	2.9	2.4	3.8
Argyll & Bute	77.0	75.1	73.1	12	16	20	1.9	3.9	2.6	5.4
Clackmannanshire	75.6	73.2	73.2	23	25	19	2.4	2.4	3.3	3.3
Dumfries & Galloway	76.7	75.7	74.9	14	10	6	1.0	1.8	1.4	2.4
Dundee City	73.9	73.0	71.9	28	26	26	0.9	2.0	1.2	2.8
East Ayrshire	75.4	73.7	73.0	24	24	21	1.7	2.4	2.3	3.3
East Dunbartonshire	79.4	77.7	75.9	1	1	2	1.7	3.5	2.2	4.6
East Lothian	77.3	76.1	74.6	9	7	8	1.2	2.6	1.6	3.5
East Renfrewshire	78.3	76.8	75.9	3	2	1	1.5	2.4	1.9	3.1
Edinburgh, City of	77.2	75.5	73.9	11	12	15	1.7	3.3	2.3	4.4
Eilean Siar	74.0	72.1	71.7	27	29	28	1.9	2.2	2.7	3.1
Falkirk	76.4	74.4	73.3	17	20	18	1.9	3.1	2.6	4.2
Fife	76.3	75.4	74.0	19	13	14	0.9	2.3	1.2	3.1
Glasgow City	71.6	69.9	68.4	32	32	32	1.7	3.2	2.4	4.7
Highland	76.4	75.0	72.9	16	18	22	1.4	3.5	1.9	4.8
Inverclyde	73.0	71.1	70.0	31	30	31	1.9	3.0	2.7	4.3
Midlothian	76.6	75.2	73.7	15	15	17	1.4	2.9	1.9	3.9
Moray	76.9	75.6	74.5	13	11	10	1.3	2.4	1.7	3.2
North Ayrshire	75.0	73.8	72.6	25	23	24	1.2	2.5	1.6	3.4
North Lanarkshire	74.3	72.7	71.8	26	27	27	1.6	2.5	2.1	3.5
Orkney Islands	77.3	76.3	74.0	8	6	13	1.0	3.3	1.4	4.4
Perth & Kinross	79.1	76.4	75.3	2	4	3	2.6	3.8	3.4	5.0
Renfrewshire	73.8	72.6	71.1	29	28	29	1.2	2.7	1.6	3.9
Scottish Borders	77.5	75.8	75.1	7	8	5	1.7	2.4	2.2	3.1
Shetland Islands	77.2	75.3	74.2	10	14	11	1.9	3.0	2.5	4.1
South Ayrshire	76.4	75.0	74.1	18	17	12	1.3	2.2	1.8	3.0
South Lanarkshire	75.7	74.3	72.8	22	21	23	1.5	2.9	2.0	4.0
Stirling	77.8	76.3	74.6	5	5	9	1.5	3.3	1.9	4.4
West Dunbartonshire	73.6	71.0	70.7	30	31	30	2.7	2.9	3.7	4.1
West Lothian	76.2	74.3	72.4	21	22	25	1.9	3.8	2.6	5.2
NHS Board areas										
Ayrshire & Arran	75.6	74.2	73.2	11	11	10	1.4	2.4	1.9	3.3
Borders	77.5	75.8	75.1	1	3	1	1.7	2.4	2.2	3.1
Dumfries & Galloway	76.7	75.7	74.9	7	4	2	1.0	1.8	1.4	2.4
Fife	76.3	75.4	74.0	10	5	6	0.9	2.3	1.2	3.1
Forth Valley	76.6	74.8	73.6	8	10	9	1.9	3.0	2.5	4.1
Grampian	77.3	75.9	74.5	3	2	3	1.4	2.7	1.8	3.6
Greater Glasgow & Clyde	73.6	71.9	70.3	14	14	14	1.8	3.3	2.4	4.8
Highland	76.6	75.0	72.9	9	9	11	1.6	3.7	2.1	5.0
Lanarkshire	75.0	73.5	72.3	12	12	12	1.6	2.7	2.1	3.7
Lothian	77.0	75.3	73.7	5	7	8	1.7	3.3	2.2	4.5
Orkney	77.3	76.3	74.0	2	1	5	1.0	3.3	1.4	4.4
Shetland	77.2	75.3	74.2	4	6	4	1.9	3.0	2.5	4.1
Tayside	76.8	75.0	73.8	6	8	7	1.8	3.0	2.4	4.0
Western Isles	74.0	72.1	71.7	13	13	13	1.9	2.2	2.7	3.1

© Crown copyright 2011

¹The results may vary from year to year, particularly those based on small populations.

Table 7 Life expectancy at birth in Scotland, 2008-2010, by Council and NHS Board area and comparisons with 1998-2000 and 2003-2005

(Females)

	2008- 2010	2003- 2005	1998- 2000	2008- 2010	2003- 2005	1998- 2000	Change over 5 years	Change over 10 years	Change over 5 years (%)	Change over 10 years (%)
	Years ¹	Years ¹	Years ¹	Rank	Rank	Rank	(Years)	(Years)	(%)	(%)
Scotland	80.4	79.2	78.4	-	-	-	1.2	2.1	1.5	2.6
Council areas										
Aberdeen City	80.9	79.9	79.1	17	15	15	1.0	1.7	1.2	2.2
Aberdeenshire	81.7	81.0	80.2	7	4	5	0.6	1.4	0.8	1.8
Angus	80.3	79.4	78.7	22	20	18	0.9	1.6	1.1	2.0
Argyll & Bute	80.9	80.7	78.6	16	6	19	0.2	2.3	0.3	2.9
Clackmannanshire	80.6	78.7	78.5	20	24	21	1.9	2.2	2.5	2.7
Dumfries & Galloway	81.5	79.8	79.2	9	16	14	1.7	2.3	2.1	2.9
Dundee City	79.2	78.4	77.9	28	26	24	0.8	1.3	1.1	1.7
East Ayrshire	79.5	78.0	76.9	25	28	31	1.6	2.7	2.0	3.5
East Dunbartonshire	82.7	81.2	80.1	1	2	7	1.5	2.6	1.9	3.3
East Lothian	81.2	80.1	79.4	14	11	10	1.0	1.7	1.3	2.2
East Renfrewshire	82.3	81.0	80.7	3	3	3	1.2	1.5	1.5	1.9
Edinburgh, City of	81.8	80.6	79.0	6	8	16	1.2	2.9	1.5	3.6
Eilean Siar	82.0	79.5	80.3	4	18	4	2.5	1.7	3.1	2.1
Falkirk	80.3	79.1	78.4	21	21	22	1.2	2.0	1.5	2.5
Fife	80.7	79.7	79.3	18	17	11	1.0	1.4	1.3	1.8
Glasgow City	78.0	76.7	75.8	32	32	32	1.3	2.2	1.7	2.9
Highland	81.5	80.3	79.3	8	9	13	1.2	2.3	1.5	2.8
Inverclyde	79.1	77.9	77.3	29	29	28	1.3	1.8	1.6	2.3
Midlothian	81.4	79.5	78.9	10	19	17	1.9	2.6	2.4	3.3
Moray	81.3	80.1	79.3	12	12	12	1.2	2.0	1.5	2.5
North Ayrshire	79.5	78.9	78.1	26	23	23	0.7	1.5	0.8	1.9
North Lanarkshire	78.8	77.6	77.4	30	30	27	1.1	1.4	1.4	1.8
Orkney Islands	81.4	81.4	81.5	11	1	1	0.0	-0.1	0.0	-0.1
Perth & Kinross	82.3	80.6	80.2	2	7	6	1.7	2.2	2.1	2.7
Renfrewshire	79.5	78.2	77.6	27	27	26	1.3	1.9	1.7	2.4
Scottish Borders	81.2	80.0	79.9	13	14	8	1.3	1.3	1.6	1.7
Shetland Islands	80.7	81.0	80.8	19	5	2	-0.3	-0.2	-0.4	-0.2
South Ayrshire	81.1	80.1	78.6	15	13	20	1.1	2.5	1.3	3.2
South Lanarkshire	80.3	79.1	77.9	23	22	25	1.1	2.4	1.4	3.0
Stirling	81.9	80.1	79.6	5	10	9	1.8	2.3	2.2	2.9
West Dunbartonshire	78.3	77.5	76.9	31	31	30	0.7	1.4	1.0	1.8
West Lothian	80.0	78.4	77.3	24	25	29	1.6	2.7	2.0	3.5
NHS Board areas										
Ayrshire & Arran	80.0	79.0	77.9	12	12	12	1.1	2.2	1.4	2.8
Borders	81.2	80.0	79.9	7	6	4	1.3	1.3	1.6	1.7
Dumfries & Galloway	81.5	79.8	79.2	2	7	8	1.7	2.3	2.1	2.9
Fife	80.7	79.7	79.3	9	8	6	1.0	1.4	1.3	1.8
Forth Valley	80.8	79.3	78.7	8	11	10	1.5	2.1	1.9	2.6
Grampian	81.3	80.4	79.6	6	3	5	0.9	1.7	1.1	2.1
Greater Glasgow & Clyde	79.2	77.8	76.9	14	14	14	1.4	2.3	1.8	3.0
Highland	81.3	80.3	79.3	5	4	7	1.0	2.0	1.3	2.6
Lanarkshire	79.4	78.3	77.7	13	13	13	1.1	1.7	1.3	2.2
Lothian	81.4	80.0	78.7	4	5	11	1.3	2.6	1.7	3.3
Orkney	81.4	81.4	81.5	3	1	1	0.0	-0.1	0.0	-0.1
Shetland	80.7	81.0	80.8	11	2	2	-0.3	-0.2	-0.4	-0.2
Tayside	80.7	79.5	78.9	10	10	9	1.2	1.8	1.5	2.3
Western Isles	82.0	79.5	80.3	1	9	3	2.5	1.7	3.1	2.1

© Crown copyright 2011

¹The results may vary from year to year, particularly those based on small populations.

Table 8 Life expectancy at birth in Scotland, 2008-2010, by Community Health Partnership area and comparisons with 1998-2000 and 2003-2005 (Males)

	2008- 2010	2003- 2005	1998- 2000	2008- 2010	2003- 2005	1998- 2000	Change over 5 years (Years)	Change over 10 years (Years)	Change over 5 years (%)	Change over 10 years (%)
	Years ¹	Years ¹	Years ¹	Rank	Rank	Rank				
Scotland	75.8	74.2	72.9	-	-	-	1.6	3.0	2.2	4.1
Community Health Partnership										
Aberdeen City	76.3	75.0	73.8	21	21	16	1.3	2.5	1.8	3.3
Aberdeenshire	78.2	76.7	75.2	4	3	5	1.5	3.0	1.9	4.0
Angus	77.6	75.7	74.7	6	10	8	1.8	2.8	2.4	3.8
Argyll & Bute	77.0	75.1	73.1	15	19	22	1.9	3.9	2.6	5.4
Clackmannanshire	75.6	73.2	73.2	25	29	21	2.4	2.4	3.3	3.3
Dumfries & Galloway	76.7	75.7	74.9	17	11	7	1.0	1.8	1.4	2.4
Dundee	73.9	73.0	71.9	32	30	30	0.9	2.0	1.2	2.8
Dunfermline & West Fife	76.2	75.5	73.4	23	13	19	0.7	2.8	0.9	3.8
East Ayrshire	75.4	73.7	73.0	27	28	23	1.7	2.4	2.3	3.2
East Dunbartonshire	79.4	77.7	75.9	1	1	2	1.7	3.5	2.2	4.6
East Lothian	77.3	76.1	74.6	10	8	9	1.2	2.6	1.6	3.5
East Renfrewshire ²	78.3	76.8	76.0	3	2	1	1.5	2.3	1.9	3.1
Edinburgh	77.2	75.5	73.9	12	14	15	1.7	3.3	2.3	4.4
Falkirk	76.4	74.4	73.3	19	23	20	1.9	3.1	2.6	4.2
Glasgow City ⁴	71.7	70.0	68.4	36	36	36	1.7	3.2	2.4	4.7
Glenrothes & North East Fife	77.3	76.2	75.8	8	7	3	1.1	1.5	1.5	2.0
Inverclyde ²	73.0	71.1	70.0	35	34	35	1.9	3.0	2.7	4.3
Kirkcaldy & Levenmouth	75.2	74.2	72.7	28	26	26	1.0	2.5	1.3	3.4
Mid Highland	77.1	75.3	72.0	13	16	29	1.8	5.0	2.3	7.0
Midlothian	76.6	75.2	73.7	18	17	17	1.4	2.9	1.9	3.9
Moray ³	76.9	75.6	74.5	16	12	11	1.3	2.4	1.8	3.2
North Ayrshire	75.0	73.8	72.6	29	27	27	1.2	2.5	1.6	3.4
North Highland	77.0	75.2	72.9	14	18	24	1.9	4.1	2.5	5.6
North Lanarkshire	74.3	72.7	71.8	30	31	31	1.6	2.5	2.1	3.5
Orkney	77.3	76.3	74.0	9	6	14	1.0	3.3	1.4	4.4
Perth & Kinross	79.1	76.4	75.4	2	4	4	2.6	3.7	3.4	4.9
Renfrewshire	73.8	72.6	71.1	33	32	33	1.2	2.7	1.6	3.9
Scottish Borders ²	77.5	75.8	75.1	7	9	6	1.7	2.4	2.2	3.1
Shetland	77.2	75.3	74.2	11	15	12	1.9	3.0	2.5	4.1
South Ayrshire	76.4	75.0	74.1	20	20	13	1.3	2.3	1.8	3.1
South East Highland	75.6	74.5	73.6	26	22	18	1.1	2.0	1.5	2.7
South Lanarkshire	75.8	74.3	72.9	24	24	25	1.5	2.9	2.0	4.0
Stirling	77.8	76.3	74.6	5	5	10	1.5	3.3	1.9	4.4
West Dunbartonshire ²	73.6	71.0	70.7	34	35	34	2.7	2.9	3.7	4.1
West Lothian ²	76.2	74.3	72.4	22	25	28	1.9	3.8	2.6	5.2
Western Isles ³	74.0	72.1	71.7	31	33	32	1.9	2.2	2.7	3.1
Glasgow City ⁴ CHP sector areas:										
North East sector	70.7	68.3	66.9	-	-	-	2.3	3.7	3.4	5.6
North West sector	72.0	70.6	68.8	-	-	-	1.4	3.2	2.0	4.6
South sector	72.2	70.8	69.3	-	-	-	1.4	2.8	1.9	4.1

© Crown copyright 2011

¹The results may vary from year to year, particularly those based on small populations.

² Known as a Community Health and Care Partnership.

³ Known as a Community Health and Social Care Partnership.

⁴ 'New' CHP configured in March 2011 from previous CHCPs in East Glasgow, North Glasgow, South East Glasgow, South West Glasgow and West Glasgow.

Table 9 Life expectancy at birth in Scotland, 2008-2010, by Community Health Partnership area and comparisons with 1998-2000 and 2003-2005 (Females)

	2008- 2010	2003- 2005	1998- 2000	2008- 2010	2003- 2005	1998- 2000	Change over 5 years (Years)	Change over 10 years (Years)	Change over 5 years (%)	Change over 10 years (%)
	Years ¹	Years ¹	Years ¹	Rank	Rank	Rank				
Scotland	80.4	79.2	78.4	-	-	-	1.2	2.1	1.5	2.6
Community Health Partnership										
Aberdeen City	80.9	79.9	79.1	20	17	17	0.9	1.7	1.2	2.2
Aberdeenshire	81.7	81.0	80.2	9	4	7	0.6	1.4	0.8	1.8
Angus	80.3	79.3	78.7	25	22	20	0.9	1.6	1.2	2.0
Argyll & Bute	80.9	80.7	78.6	19	8	21	0.2	2.3	0.3	2.9
Clackmannanshire	80.6	78.7	78.5	23	28	24	1.9	2.2	2.5	2.7
Dumfries & Galloway	81.5	79.8	79.2	11	18	15	1.7	2.3	2.1	2.9
Dundee	79.2	78.4	77.9	32	29	28	0.8	1.3	1.0	1.7
Dunfermline & West Fife	80.7	79.0	79.2	21	26	14	1.7	1.5	2.2	1.9
East Ayrshire	79.5	78.0	76.9	28	32	34	1.6	2.6	2.0	3.4
East Dunbartonshire	82.7	81.2	80.1	1	2	8	1.5	2.6	1.9	3.3
East Lothian	81.2	80.1	79.4	16	13	12	1.0	1.7	1.3	2.2
East Renfrewshire ²	82.3	81.1	80.9	3	3	2	1.2	1.4	1.5	1.7
Edinburgh	81.8	80.6	79.0	6	10	18	1.2	2.9	1.5	3.6
Falkirk	80.3	79.1	78.4	24	24	26	1.2	2.0	1.5	2.5
Glasgow City ⁴	78.0	76.7	75.8	36	36	36	1.3	2.2	1.7	2.9
Glenrothes & North East Fife	81.8	80.8	80.4	7	6	4	1.0	1.4	1.2	1.7
Inverclyde ²	79.1	77.9	77.3	33	33	32	1.3	1.8	1.6	2.4
Kirkcaldy & Levenmouth	79.5	79.3	78.4	31	23	25	0.2	1.1	0.2	1.4
Mid Highland	81.6	80.8	79.8	10	7	10	0.9	1.9	1.1	2.4
Midlothian	81.4	79.5	78.9	12	20	19	1.9	2.6	2.4	3.3
Moray ³	81.3	80.1	79.3	14	14	13	1.2	2.0	1.5	2.5
North Ayrshire	79.5	78.9	78.1	29	27	27	0.7	1.5	0.8	1.9
North Highland	81.0	79.4	78.5	18	21	23	1.6	2.5	2.0	3.2
North Lanarkshire	78.8	77.6	77.3	34	34	31	1.1	1.4	1.4	1.8
Orkney	81.4	81.4	81.5	13	1	1	0.0	-0.1	0.0	-0.1
Perth & Kinross	82.3	80.6	80.2	2	9	6	1.7	2.1	2.1	2.7
Renfrewshire	79.5	78.2	77.6	30	31	30	1.3	1.9	1.7	2.4
Scottish Borders ²	81.2	80.0	79.9	15	16	9	1.3	1.3	1.6	1.7
Shetland	80.7	81.0	80.8	22	5	3	-0.3	-0.2	-0.4	-0.2
South Ayrshire	81.1	80.1	78.6	17	15	22	1.1	2.6	1.3	3.3
South East Highland	81.7	80.2	79.2	8	11	16	1.5	2.6	1.9	3.2
South Lanarkshire	80.2	79.1	77.9	26	25	29	1.1	2.4	1.4	3.0
Stirling	81.9	80.1	79.6	5	12	11	1.8	2.3	2.2	2.9
West Dunbartonshire ²	78.3	77.5	76.9	35	35	35	0.7	1.4	1.0	1.8
West Lothian ²	80.0	78.4	77.3	27	30	33	1.6	2.7	2.0	3.5
Western Isles ³	82.0	79.5	80.3	4	19	5	2.5	1.7	3.1	2.1
Glasgow City ⁴ CHP sector areas:										
North East sector	77.6	75.7	74.7	-	-	-	1.9	2.9	2.5	3.8
North West sector	77.6	77.1	76.3	-	-	-	0.5	1.4	0.6	1.8
South sector	78.6	77.2	76.1	-	-	-	1.4	2.5	1.8	3.2

© Crown copyright 2011

¹The results may vary from year to year, particularly those based on small populations.

² Known as a Community Health and Care Partnership.

³ Known as a Community Health and Social Care Partnership.

⁴ 'New' CHP configured in March 2011 from previous CHCPs in East Glasgow, North Glasgow, South East Glasgow, South West Glasgow and West Glasgow.

Table 10 Life expectancy at age 65 in Scotland, 2008-2010, by Council and NHS Board area, (Males and Females)

	Males		Females	
	Years ¹	Rank	Years ¹	Rank
Scotland	16.8	-	19.3	-
Council areas				
Aberdeen City	17.0	17	19.3	20
Aberdeenshire	17.9	5	19.9	10
Angus	18.1	3	19.6	18
Argyll & Bute	17.4	14	19.8	12
Clackmannanshire	16.6	23	19.1	22
Dumfries & Galloway	17.1	15	20.1	9
Dundee City	16.8	19	19.3	21
East Ayrshire	16.3	25	18.9	25
East Dunbartonshire	18.9	1	21.1	1
East Lothian	17.6	11	19.6	17
East Renfrewshire	17.8	6	20.5	3
Edinburgh, City of	17.6	10	20.4	5
Eilean Siar	16.1	27	20.9	2
Falkirk	16.6	22	18.8	26
Fife	17.1	16	19.7	15
Glasgow City	14.3	32	17.8	32
Highland	17.5	12	20.1	8
Inverclyde	15.5	31	18.9	24
Midlothian	16.8	20	19.3	19
Moray	17.7	9	19.9	11
North Ayrshire	16.7	21	18.7	28
North Lanarkshire	15.6	30	18.2	30
Orkney Islands	17.5	13	19.7	13
Perth & Kinross	18.5	2	20.5	4
Renfrewshire	15.7	28	18.3	29
Scottish Borders	17.7	8	19.6	16
Shetland Islands	17.7	7	20.3	6
South Ayrshire	16.9	18	19.7	14
South Lanarkshire	16.4	24	18.9	23
Stirling	17.9	4	20.2	7
West Dunbartonshire	15.6	29	18.1	31
West Lothian	16.2	26	18.8	27
NHS Board areas				
Ayrshire & Arran	16.7	11	19.1	12
Borders	17.7	3	19.6	10
Dumfries & Galloway	17.1	8	20.1	3
Fife	17.1	9	19.7	9
Forth Valley	17.0	10	19.2	11
Grampian	17.5	5	19.7	8
Greater Glasgow & Clyde	15.5	14	18.6	13
Highland	17.5	6	20.0	4
Lanarkshire	16.0	13	18.5	14
Lothian	17.2	7	19.9	5
Orkney	17.5	4	19.7	7
Shetland	17.7	2	20.3	2
Tayside	17.8	1	19.8	6
Western Isles	16.1	12	20.9	1

© Crown copyright 2011

¹The results may vary from year to year, particularly those based on small populations.

Table 11 Life expectancy at age 65 in Scotland, 2008-2010, by Community Health Partnership area, (Males and Females)

	Males Years¹	Rank	Females Years¹	Rank
Scotland	16.8	-	19.3	-
Community Health Partnership				
Aberdeen City	17.0	19	19.3	22
Aberdeenshire	17.9	6	19.9	12
Angus	18.1	3	19.6	19
Argyll & Bute	17.4	15	19.8	14
Clackmannanshire	16.6	27	19.1	26
Dumfries & Galloway	17.1	17	20.1	10
Dundee	16.8	23	19.3	24
Dunfermline & West Fife	16.8	21	19.3	23
East Ayrshire	16.3	29	18.9	29
East Dunbartonshire	18.9	1	21.1	1
East Lothian	17.6	12	19.6	18
East Renfrewshire ²	17.8	7	20.5	4
Edinburgh	17.6	11	20.4	7
Falkirk	16.6	26	18.8	30
Glasgow City ⁴	14.3	36	17.9	36
Glenrothes & North East Fife	17.5	14	20.4	6
Inverclyde ²	15.5	35	18.9	27
Kirkcaldy & Levenmouth	16.8	22	19.2	25
Mid Highland	18.1	4	19.9	11
Midlothian	16.8	24	19.3	21
Moray ³	17.7	10	19.9	13
North Ayrshire	16.7	25	18.7	32
North Highland	17.0	18	19.5	20
North Lanarkshire	15.6	33	18.2	34
Orkney	17.5	13	19.7	15
Perth & Kinross	18.5	2	20.5	5
Renfrewshire	15.7	32	18.3	33
Scottish Borders ²	17.7	9	19.6	17
Shetland	17.7	8	20.3	8
South Ayrshire	16.9	20	19.7	16
South East Highland	17.2	16	20.7	3
South Lanarkshire	16.4	28	18.9	28
Stirling	17.9	5	20.2	9
West Dunbartonshire ²	15.6	34	18.1	35
West Lothian ²	16.2	30	18.8	31
Western Isles ³	16.1	31	20.9	2
Glasgow City ⁴ CHP sector areas:				
North East sector	14.0	-	17.9	-
North West sector	14.6	-	17.6	-
South sector	14.4	-	18.1	-

© Crown copyright 2011

¹The results may vary from year to year, particularly those based on small populations.

²Known as a Community Health and Care Partnership.

³Known as a Community Health and Social Care Partnership.

⁴'New' CHP configured in March 2011 from previous CHCPs in East Glasgow, North Glasgow, South East Glasgow, South West Glasgow and West Glasgow.

Notes on statistical publications

National Statistics

The United Kingdom Statistics Authority (UKSA) has designated these statistics as National Statistics, in accordance with the Statistics and Registration Service Act 2007 and signifying compliance with the Code of Practice for Official Statistics (available on the [UKSA](#) website).

Designation can be broadly interpreted to mean that the statistics:

- meet identified user needs;
- are well explained and readily accessible;
- are produced according to sound methods, and
- are managed impartially and objectively in the public interest.

Once statistics have been designated as National Statistics it is a statutory requirement that the Code of Practice shall continue to be observed.

National Records of Scotland

From 1 April 2011, the General Register Office for Scotland (GROS) merged with the National Archives of Scotland to become the National Records of Scotland (NRS). The GROS website will remain active until it is replaced by a new website for NRS.

We, the National Records of Scotland, are a non-ministerial department of the devolved Scottish Administration. Our aim is to provide relevant and reliable information, analysis and advice that meets the needs of government, business and the people of Scotland. We do this as follows.

- Preserving the past – We look after Scotland’s national archives so that they are available for current and future generations, and we make available important information for family history.
- Recording the present – At our network of local offices, we register births, marriages, civil partnerships, deaths, divorces and adoptions in Scotland.
- Informing the future – We are responsible for the Census of Population in Scotland which we use, with other sources of information, to produce statistics on the population and households.

You can get other detailed statistics that we have produced from the [Statistics section](#) on the NRS/GROS website. Statistics from the 2001 Census are available from Scotland’s Census Results On-Line ([SCROL](#)) website and the [Census section](#) of the NRS/GROS website.

We also provide information about [future publications](#) on our website. If you would like us to tell you about future statistical publications, you can register your interest on the Scottish Government [ScotStat](#) website.

Enquiries and suggestions

Please contact our Customer Services if you need any further information.

Email: customer@gro-scotland.gsi.gov.uk

If you have comments or suggestions that would help us improve our outputs or our standards of service, contact:

Kirsty MacLachlan

Senior Statistician

National Records of Scotland

Room 1/2/3

Ladywell House

Ladywell Road

Edinburgh

EH12 7TF.

Phone: 0131 314 4242

Email: kirsty.maclachlan@gro-scotland.gsi.gov.uk

Related organisations

Organisation	Contact
<p>The Scottish Government (SG) forms the bulk of the devolved Scottish Administration. The aim of the statistical service in the SG is to provide relevant and reliable statistical information, analysis and advice that meets the needs of government, business and the people of Scotland.</p>	<p>Office of the Chief Statistician Scottish Government 4.N06, St Andrew's House Edinburgh, EH1 3DG</p> <p>Phone: 0131 244 0442</p> <p>Email: statistics.enquiries@scotland.gsi.gov.uk</p> <p>Website: www.scotland.gov.uk/Topics/Statistics</p>
<p>The Office for National Statistics (ONS) is responsible for producing a wide range of economic and social statistics. It also carries out the Census of Population for England and Wales.</p>	<p>Customer Contact Centre Room 1.015 Office for National Statistics Cardiff Road Newport, NP10 8XG</p> <p>Phone: 0845 601 3034</p> <p>Minicom: 01633 812399</p> <p>Email: info@statistics.gsi.gov.uk</p> <p>Website: www.ons.gov.uk/</p>
<p>The Northern Ireland Statistics and Research Agency (NISRA) is Northern Ireland's official statistics organisation. The agency is also responsible, for registering births, marriages, adoptions and deaths in Northern Ireland, and the Census of Population.</p>	<p>Northern Ireland Statistics and Research Agency McAuley House 2-14 Castle Street Belfast, BT1 1SA</p> <p>Phone: 028 9034 8100</p> <p>Email: info.nisra@dfpni.gov.uk</p> <p>Website: www.nisra.gov.uk</p>

© Crown Copyright. You may reproduce brief extracts from the material in this publication as long as you fully acknowledge the source.