
Life Expectancy for Administrative Areas within Scotland

2010-2012

Including revised estimates for 2000-2002 to 2008-2010

Published on 16 April 2014

A National Statistics publication for Scotland

National Statistics are produced to high professional standards set out in the National Statistics Code of Practice. They undergo regular quality assurance reviews to ensure that they meet customer needs.



Contents

Main Points	5
1. Background	7
2. Background methodology.....	7
2.1 Life expectancy at birth	7
2.2 Accuracy of results	8
3. Life expectancy in Scotland, the UK and Europe	10
4. Life expectancy at birth, 2010-2012, geographical and other variations	13
4.1 Council areas	13
4.2 NHS Board areas	14
5. Life expectancy at birth, comparisons over time	15
5.1 Council areas	15
5.2 NHS Board areas	17
6. Life expectancy at age 65, 2010-2012, geographical variations.....	19
6.1 Council areas	19
6.2 NHS Board areas	19
7. Differences between the revised life expectancy estimates and previously published estimates.....	20
7.1 Life expectancy at Scotland level	20
7.2 Council areas	20
8. Further information	21
8.1 Life expectancy at birth	21
8.2 Life expectancy for areas in Scotland.....	21
8.3 Healthy Life Expectancy	22
8.4 Other data available from the National Records of Scotland.....	22
9. Notes and definitions.....	23
10. Notes on statistical publications	33
11. Related organisations.....	35

List of Tables

Table 1:	Abridged life table, by sex, age and Council area, Scotland, 2010-2012.....	24
Table 2:	Abridged life table, by sex, age and NHS Board area, Scotland 2010-2012.....	28
Table 3:	Life expectancy at birth in Scotland, 2010-2012, by Council and NHS Board area and comparisons with 2000-2002 and 2005-2007 (Males).....	30
Table 4:	Life expectancy at birth in Scotland, 2010-2012, by Council and NHS Board area and comparisons with 2000-2002 and 2005-2007 (Females).....	31
Table 5:	Life expectancy at age 65 in Scotland, 2010-2012, by Council and NHS Board area (Males and Females)	32

List of Figures

Figure 1:	Life expectancy at birth, Scotland , 1981-1983 to 2010-2012	10
Figure 2a:	Life expectancy at birth in selected countries, 1999-2001 to 2010-2012 Males	11
Figure 2b:	Life expectancy at birth in selected countries, 1999-2001 to 2010-2012 Females	11
Figure 3:	Life expectancy at birth, 95% confidence intervals for Council areas, 2010-2012 (Males and Females	13
Figure 4:	Life expectancy at birth, 95% confidence intervals for NHS Board areas, 2010-2012 (Males and Females)	14
Figure 5:	Life expectancy at birth in Scotland, 1991-1993 to 2010-2012, by Council area, Males	15
Figure 6:	Life expectancy at birth in Scotland, 1991-1993 to 2010-2012, by Council area, Females	16
Figure 7:	Life expectancy at birth in Scotland, 2000-2002 to 2010-2012, by NHS Board area, Males	17
Figure 8:	Life expectancy at birth in Scotland, 2000-2002 to 2010-2012, by NHS Board area, Females	18

Main Points

The main points in this report for 2010-2012 are:

At birth

- Life expectancy in Scotland was 76.6 years for males and 80.8 years for females but with considerable variation between areas.
- Male and female life expectancy was highest in East Dunbartonshire Council area and lowest in Glasgow City Council area. Males in East Dunbartonshire can expect to live for 80.1 years, 7.5 years longer than in Glasgow City (72.6 years). Females in East Dunbartonshire can expect to live for 83.4 years, 4.9 years longer than in Glasgow City (78.5 years).
- The NHS Board area with the highest male life expectancy was Orkney (79.7 years), with female life expectancy being highest in Borders (82.0 years); the NHS Board area with the lowest male life expectancy was Greater Glasgow & Clyde (74.5 years), with female life expectancy being lowest in Lanarkshire 79.8 years.

Compared with UK and Europe

- Scottish males and females have the lowest life expectancy at birth in the United Kingdom (UK). Male life expectancy is 2.3 years lower than the UK average and female life expectancy is 1.9 years lower.
- In Scotland, males and females can expect to live shorter lives (by 2.6 years and 2.2 years respectively) than in England, where male and female life expectancy is the highest in the UK.
- Within the UK in 2010-2012, male life expectancy was highest in East Dorset and Hart, both (82.9 years) and lowest in Glasgow City (72.6 years), a difference of 10.3 years. For females, life expectancy at birth was highest in Purbeck at 86.6 years and lowest in Glasgow City where females can expect to live for 78.5 years, a difference of 8.1 years. The Council areas higher for males and females are in England.
- Amongst European Union (EU) countries, male life expectancy was highest in Sweden (79.9 years), 3.3 years higher than in Scotland. Female life expectancy was highest in France (85.7 years), 4.9 years higher than in Scotland.
- Although male and female life expectancy continues to improve in Scotland, the gap between Scottish and English life expectancy for females has widened since 1999-2001 by 0.4 years but for males it has remained constant.

Changes over time

- Male and female life expectancy has continued to rise across Scotland.
- The biggest improvements in male life expectancy since 2000-2002 have been in Orkney Islands Council and NHS Board area (4.3 years).
- The biggest improvements in female life expectancy since 2000-2002 have been in East Dunbartonshire Council area, increasing by 2.9 years and Highland NHS Board area, increasing by 2.5 years.
- The gap between male and female life expectancy at birth in Scotland has decreased from 6.2 years in 1981-1983 to 4.2 years in 2010-2012. Male life expectancy has been increasing at a faster rate than for females since 2001-2003 closing the gap over this period.

At age 65

- Males in Scotland could expect to live for a further 17.2 years and females a further 19.5 years.
- Orkney Islands Council area had the highest male life expectancy at age 65 (19.4 years), 4.5 years higher than in Glasgow City, where it was lowest at 14.9 years. Female life expectancy at age 65 was highest in East Dunbartonshire (21.5 years) and lowest in Glasgow City (18.3 years), a difference of 3.2 years.
- The NHS Board areas with the highest male and female life expectancy at age 65 were Orkney (19.4 years), and Highland (20.3 years). It was lowest for males in Greater Glasgow & Clyde (16.1 years) and for females in Lanarkshire (18.7 years).

Revised life expectancy estimates

- The differences in life expectancy by age between the revised and previously published life expectancy estimates for the years 2000-2002 to 2008-2010 is very small. The differences increase with age and therefore the largest differences in life expectancies are observed at age 85 and over.
- There are wide variations in Council area life expectancy differences for both males and females between the revised and unrevised estimates, with the largest difference (11 months) being for males in Dundee City in 2008-2010 at age 85 and over. For females, the largest difference (8 months) was in Fife in 2008-2010 also at age 85 and over.

1. Background

- 1.1 This paper summarises the National Records of Scotland's life expectancy figures for the years 2010-2012 for administrative areas within Scotland. It also compares the results of the previously published life expectancy estimates calculated using population estimates based on the 2001 Census with those calculated using revised population estimates based on the 2011 Census for the years 2000-2002 to 2008-2010. As the revised small area population estimates for 2002 to 2010 are not yet available it has not been possible to update the life expectancy estimates for other areas such as by Scottish Index of Multiple Deprivation (SIMD) and Rural Urban classification. Results for these areas will be published in October/November 2014 alongside administrative area estimates for 2011-2013.
- 1.2 This paper reports on the 32 Council areas in Scotland and the new 2014 NHS Board areas in existence from 1 April 2014. Life expectancy estimates for all years in this report use the new NHS Board boundaries. Figures for 2006 NHS Board areas are available on the NRS website. Comparisons between the estimates for 2010-2012 and those of previous three-year periods are also presented. Further information on the geographical areas used in this publication can be found in [Section 9](#).
- 1.3 The estimates for 2010-2012, given in [Table 3](#), [Table 4](#) and [Table 5](#) have been ranked for ease of presentation. For Council areas, this means that '1' is the area with the highest life expectancy and '32' the lowest. Similarly, NHS Board areas are ranked 1 to 14.
- 1.4 Life expectancy at birth provides a useful summary measure of mortality rates actually experienced over a given period. It also provides an objective means of comparing trends in mortality, over time, between areas of a country and with other countries. This is of use in monitoring and investigating health inequality issues across Scotland and in setting public health targets, particularly when used in conjunction with the Scottish Index of Multiple Deprivation (SIMD). The Scottish Government currently has a high level purpose target to match European population growth over a 10 year period, supported by increased healthy life expectancy at birth. Healthy life expectancy is derived by combining estimates of life expectancy with survey data on self-assessed health ([Section 8.3](#)).

2. Background methodology

2.1 Life expectancy at birth

- 2.1.1 The figures quoted in this publication are a three year average. They are produced by aggregating deaths and population data for the three year period. Three years of data are needed to provide large enough numbers to ensure that the figures published in this report are sufficiently robust.
- 2.1.2 The figures are all period life expectancies. Period life expectancies are calculated using age specific mortality rates for a given period. They do not make allowance for any actual or projected future changes in mortality after that period. This means that life expectancy at birth for a given time period and area is an estimate of the average number of years a new born baby would survive if he/she experienced the particular area's age specific mortality rates for that time period throughout his/her life. The figure reflects mortality among those living in

the area in each period, rather than mortality among those born in each area. Life expectancy at birth is not simply the number of years a baby born in the area during the three year period is expected to live (although the term 'can expect to live' is used throughout this publication for ease of reading), both because death rates are likely to change in the future and because many of the newborns may live elsewhere for at least some part of their lives.

2.1.3 The abridged life tables in [Table 1](#) and [Table 2](#) are constructed from the estimated populations in 2010, 2011 and 2012 and the total number of deaths registered in these years. The column headed I_x shows the numbers who would survive to the exact age of x out of 100,000 persons who, from birth, were subject to the mortality probabilities indicated by the death records for 2010-2012. The column headed e_x^0 shows the expectation of life – the average number of years of life left to persons aged exactly x who are subject to the 2010-2012 mortality probabilities from age x onwards. For example, in [Table 1](#), for Glasgow City, 74.5 per cent of the male population and 85.0 per cent of the female population could be expected to survive to age 65. In [Table 2](#), a male aged 65 in Fife NHS Board could be expected to live on average another 17.4 years, and a female aged 65 could be expected to live on average another 19.8 years.

2.2 Accuracy of results

2.2.1 Life expectancy is an estimate which is subject to a margin of error. The accuracy of the results can be indicated by calculating a confidence interval within which the true underlying life expectancy would be expected to lie. In this publication, confidence intervals are set at the 95 per cent level, with the true underlying life expectancy being found within its upper and lower limits with 95 per cent probability. Life expectancy for an area can usually be said to be significantly different from another area if the 95 per cent confidence intervals do not overlap. Also, errors in the population estimates used for calculation purposes must be considered.

2.2.2 The 95 per cent confidence intervals for life expectancy at birth are illustrated in [Figure 3](#) and [Figure 4](#) for Council and NHS Board areas respectively.

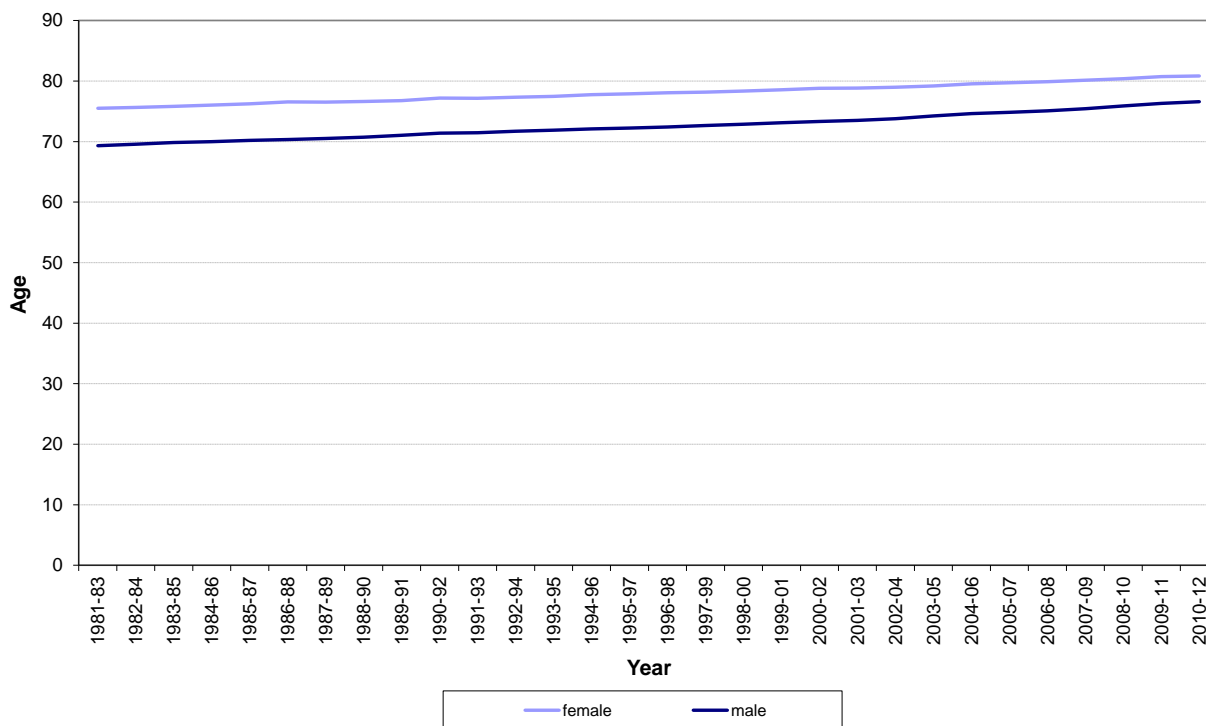
2.2.3 There is no simple 'rule of thumb' for the size of confidence intervals, although it largely depends upon the size of the population: areas with small populations tend to have wider confidence intervals. It is also worth noting that life expectancy results in these areas can be affected by the random variation in the annual number of deaths. This means that estimated life expectancy can vary from year to year. For example, in [Table 3](#), [Table 4](#) and [Table 5](#), changes in rank may simply be due to random variation from year to year in the population and number of deaths (particularly in the smaller areas such as Orkney and Shetland) as opposed to a change in the long term trend life expectancy. Rankings are usually only significantly different if the confidence intervals do not overlap e.g. in [Figure 4](#), life expectancy at birth for females in Orkney is only significantly different from that of females in Greater Glasgow & Clyde and Lanarkshire; all other NHS Boards have overlapping confidence intervals and therefore do not have significantly different female life expectancies. For 2010-12, there was some evidence that females in Orkney enjoyed slightly higher life expectancy than males. However the difference only just achieved significance at the lowest conventional level (5 per cent) and the evidence cannot be regarded as conclusive.

- 2.2.4 A description of the methods used to calculate life expectancy for different geographical areas and other classifications within Scotland can be found in the [Life Expectancy for Scotland: Methodology Guide](#) on the NRS website.
- 2.2.5 More information about the methods used to calculate the standard errors and confidence intervals used in this report can be found in the Office for National Statistics publication, number 33 in the Government Statistical Service (GSS) Methodology Series. The report details the research undertaken by the Office for National Statistics (ONS) to compare methodologies for calculating life expectancy figures and confidence intervals. It can be found on the [ONS website](#).

3. Life expectancy in Scotland, the UK and Europe

3.1 Figure 1 shows that the expectation of life at birth in Scotland has shown constant improvement over the last 29 years. It has increased from 69.3 years for males born in the period 1981-1983 to 76.6 years for those born in 2010-2012, an increase of 7.3 years. For females, life expectancy has increased from 75.5 years for those born in the period 1981-1983 to 80.8 years for those born in 2010-2012, an increase of 5.3 years.

Figure 1: Life expectancy at birth, Scotland¹, 1981-1983 to 2010-2012



3.2 Figure 1 also shows that the gap between male and female life expectancy at birth has decreased from 6.2 years in 1981-1983 to 4.2 years in 2010-2012. Male life expectancy has been increasing at a faster rate than for females since 2001-2003.

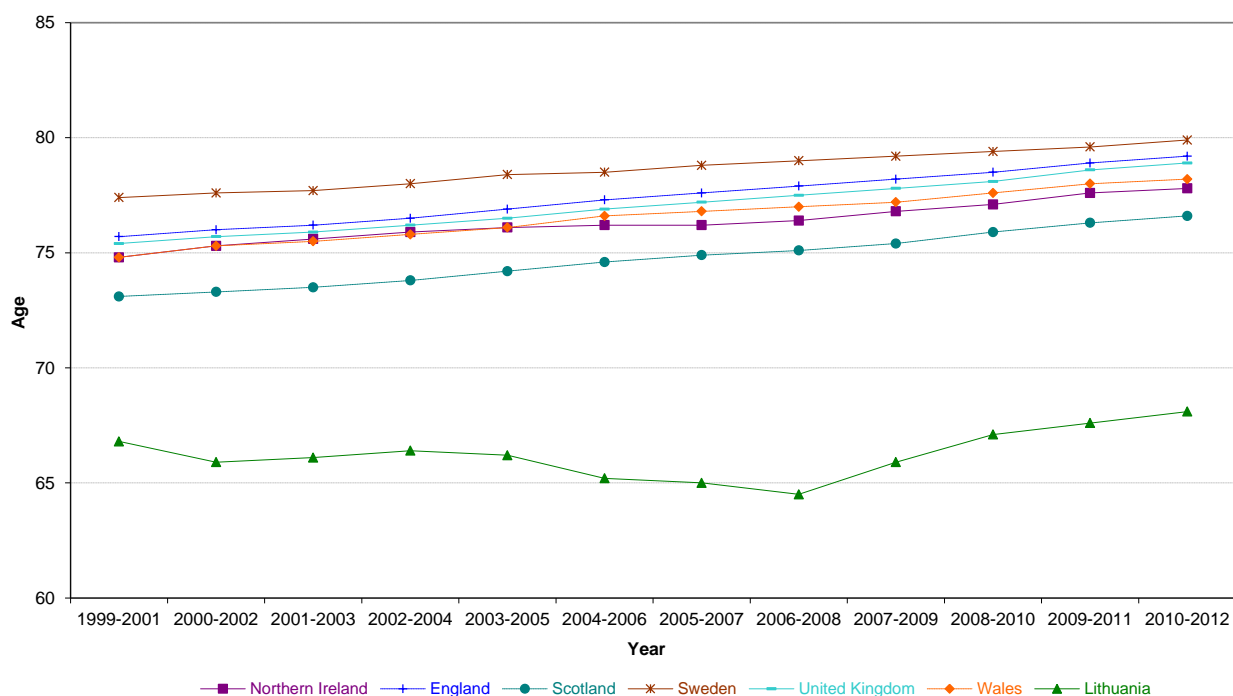
3.3 The improvement in life expectancy at birth for males and females in Scotland since 1999-2001 can be seen in [Figure 2a](#) (males) and [Figure 2b](#) (females). Comparisons are also given with life expectancy in the United Kingdom, countries within the UK and the countries that typically have the highest and lowest life expectancy in the European Union (EU) (Sweden and Lithuania for males and France and Romania for females).

3.4 Although male and female life expectancy continues to increase in Scotland, it is still below the UK average, which is 78.9 years for males and 82.7 years for females. The gap between UK and Scottish life expectancy is now wider than in 1999-2001, by 0.3 years for females. For males the gap has remained constant.

Footnote

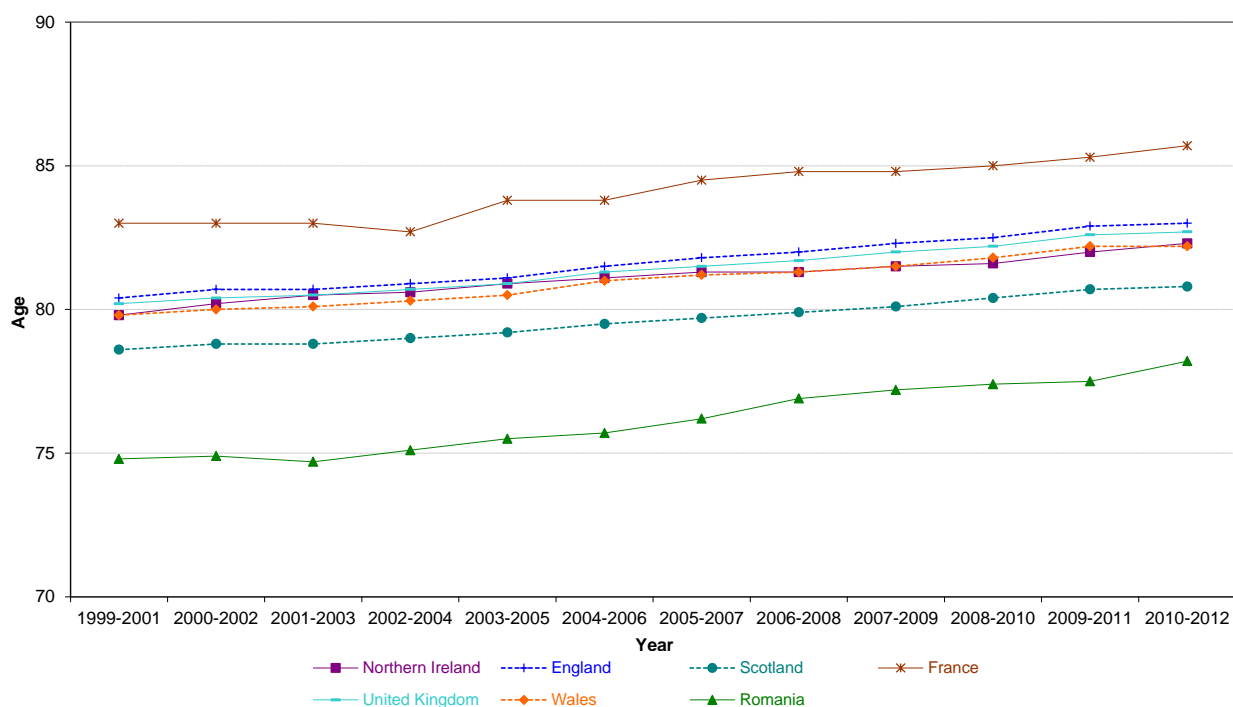
1) Life expectancy figures for Scotland and the other UK constituent countries are also produced by the Office for National Statistics (ONS) using complete life tables based on single years of age. Figures in this publication are from abridged life tables based on grouped years. For more details go to [Section 8.1](#).

Figure 2a: Life expectancy at birth in selected countries, 1999-2001 to 2010-2012 Males



Source: EUROSTAT, Office for National Statistics and National Records of Scotland

Figure 2b: Life expectancy at birth in selected countries, 1999-2001 to 2010-2012 Females



Source: EUROSTAT, Office for National Statistics and National Records of Scotland

3.5 Scottish male life expectancy has been consistently lower than that of males in England, Northern Ireland and Wales, although the gap has varied over time. Males in England, Wales and Northern Ireland can expect to live longer than those in Scotland by 2.6 years, 1.6 years and 1.2 years respectively. In

comparison to 1999-2001, the gap with England has remained constant and the gap with Wales has narrowed by 0.1 years. The gap with Northern Ireland has also narrowed, by 0.5 years.

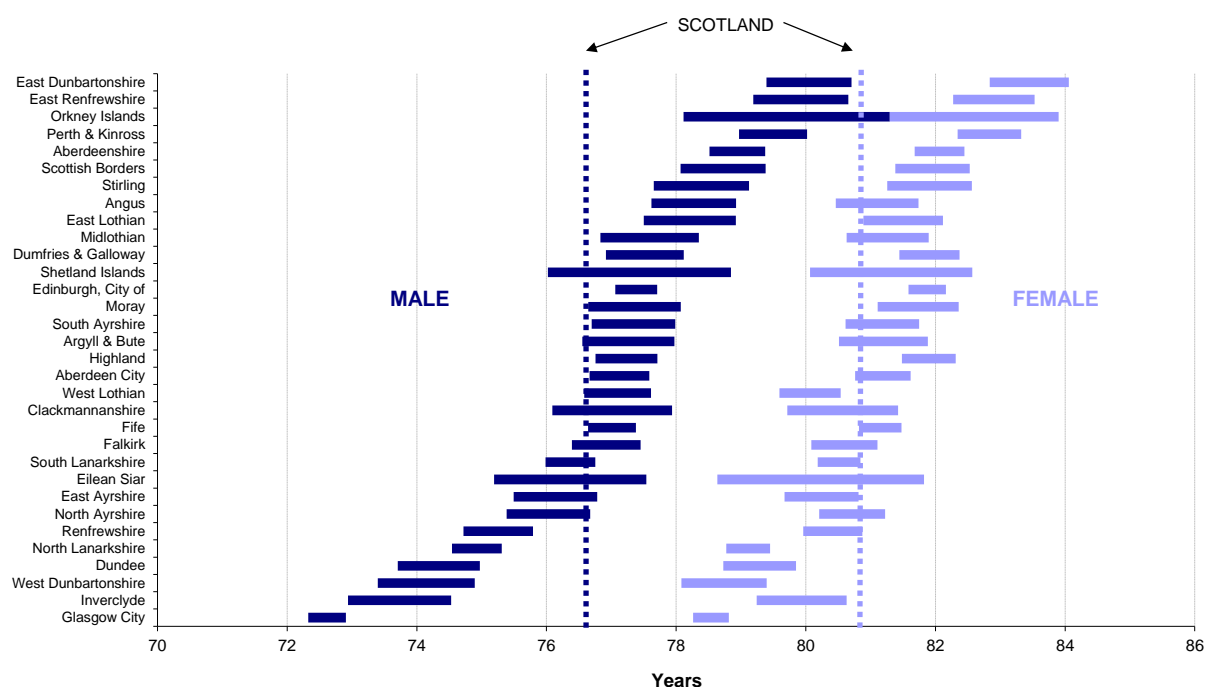
- 3.6 The pattern is similar for female life expectancy in Scotland. Females in Scotland can expect to live 2.2 years fewer than females in England, 1.4 years fewer than females in Wales and 1.5 years fewer than females in Northern Ireland. Over time, the gap has widened by 0.4 years compared with England, by 0.3 years compared with Northern Ireland and by 0.2 years compared with Wales.
- 3.7 Male life expectancy in Sweden at 79.9 years is the highest among the EU's 28 member states, 3.3 years higher than in Scotland. In Lithuania, male life expectancy is 68.1 years, the lowest in the EU and 8.5 years lower than in Scotland. Since 1999-2001 male life expectancy has improved, reducing the gap with Sweden and increasing the gap with Lithuania.
- 3.8 France has the highest female life expectancy in the EU at 85.7 years, 4.9 years higher than in Scotland. In Romania female life expectancy is 78.2 years, one of the lowest in the EU. Female life expectancy in Scotland has not improved as much as in France or Romania. The gap in life expectancy between French and Scottish women is 0.5 years wider than in 1999-2001 and the gap between Scottish and Romanian women is 1.2 years narrower than in 1999-2001.

4. Life expectancy at birth, 2010-2012, geographical and other variations

4.1 Council areas

4.1.1 **Table 1** shows life expectancy at birth and at five-year intervals in Scotland and Council areas for 2010-2012. **Table 3** and **Table 4** show the life expectancy at birth and rank for Council areas, along with comparisons with five and ten years ago. In **Figure 3** life expectancy at birth in 2010-2012 is shown with the associated 95 per cent confidence intervals for each of the Council areas. Life expectancy for an area can usually be said to be significantly different from another area if the 95 per cent confidence intervals do not overlap.

Figure 3: Life expectancy at birth, 95% confidence intervals for Council areas, 2010-2012 (Males and Females)



4.1.2 For males, the Council area with the lowest life expectancy was Glasgow City (72.6 years) and the Council area with the highest life expectancy was East Dunbartonshire (80.1 years), a difference of 7.5 years between highest and lowest.

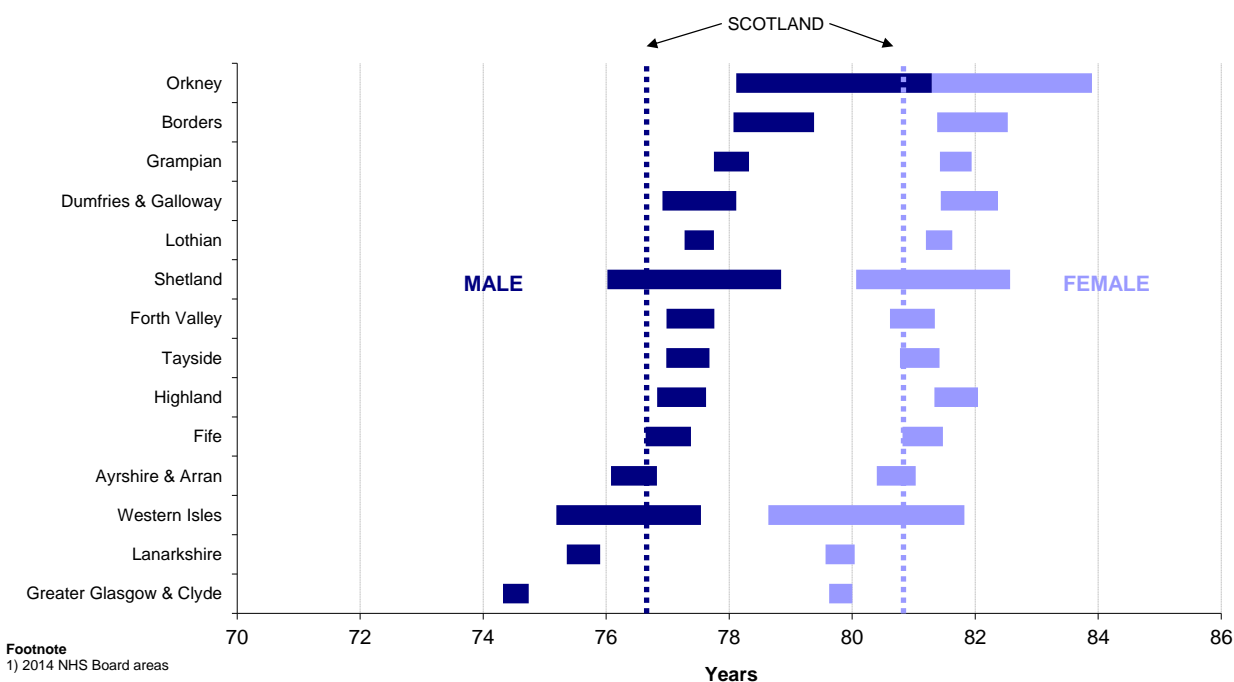
4.1.3 For females, Glasgow City had the lowest life expectancy (78.5 years) and the highest life expectancy was in East Dunbartonshire (83.4 years), a difference of 4.9 years.

4.1.4 Across the UK, Glasgow City had the lowest life expectancy for both males and females, 10.3 years fewer than East Dorset for males and 8.1 years fewer than Purbeck for females, both of these Council areas are in England. Life expectancy estimates for areas in England and the rest of the UK are published on the ONS website.

4.2 NHS Board areas

4.2.1 [Table 2](#) shows life expectancy at birth and five-year intervals in Scotland and for the new NHS 2014 Board areas for 2010-2012. [Table 3](#) and [Table 4](#) show the life expectancy at birth and rank for NHS Board areas, along with comparisons with five and ten years ago. [Figure 4](#) shows life expectancy at birth in 2010-2012, along with 95 per cent confidence intervals for each of the NHS Board areas.

Figure 4: Life expectancy at birth, 95% confidence intervals for NHS Board areas¹, 2010-2012 (Males and Females)



Footnote
1) 2014 NHS Board areas

Ordered by lowest male life expectancy to highest

For 2010-2012, there was some evidence that females in Orkney enjoyed slightly higher life expectancy than males. However, the difference only just achieved significance at the lowest conventional level (5%) and the evidence cannot be regarded as conclusive.

4.2.2 The NHS Board area with the highest life expectancy was Orkney for males (79.7 years) and Borders for females (82.0 years).

4.2.3 The Greater Glasgow & Clyde NHS Board area was the area with the lowest life expectancy for males (74.5 years) and Lanarkshire had the lowest for females (79.8 years) although it is not significantly different from Greater Glasgow & Clyde and Western Isles NHS Board areas.

5. Life expectancy at birth, comparisons over time

5.1 Council areas

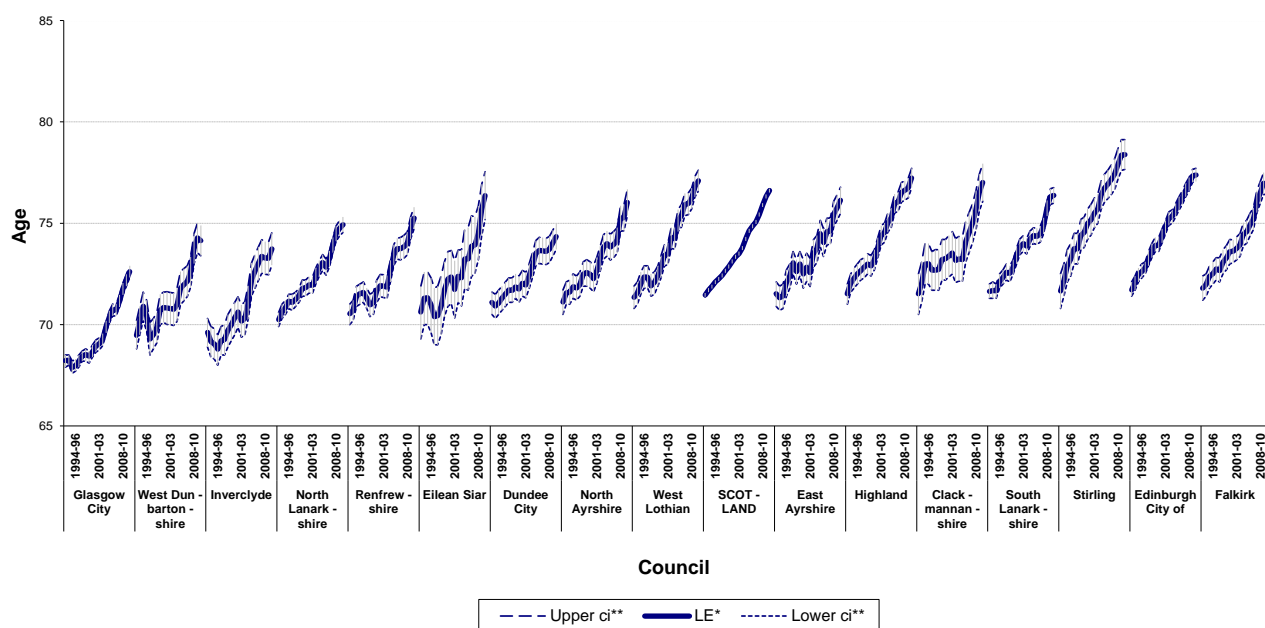
5.1.1 Figure 5 shows how male life expectancy within Council areas has changed since 1991-1993, with Council areas ordered from left to right by the lowest to highest life expectancy in 1991-1993.

5.1.2 Figure 6 shows how female life expectancy has also changed within Council areas since 1991-1993, with Council areas ordered from left to right by the lowest to highest life expectancy in 1991-1993.

5.1.3 Table 3 and Table 4 compare male and female life expectancies in 2010-2012 with those for 2000-2002 and 2005-2007 and give rankings for each area in the respective years. Comparisons made between these rankings should be treated with caution and do not imply differences in life expectancy.

5.1.4 Male life expectancy has risen in all Council areas since 2000-2002, with the biggest increase of 5.7 per cent (4.3 years) being in Orkney Islands. Female life expectancy has increased in most Council areas since 2000-2002. In Shetland Islands there was a small decrease but this was not significant (Section 2.2). East Dunbartonshire Council saw the biggest rise in female life expectancy, increasing by 3.6 per cent (2.9 years).

Figure 5: Life expectancy at birth in Scotland, 1991-1993 to 2010-2012, by Council area, Males



Ordered from lowest to highest life expectancy in 1991-1993

* Life Expectancy (LE)
** Confidence Interval (ci)

Figure 5: Life expectancy at birth in Scotland, 1991-1993 to 2010-2012, by Council area, Males (continued)

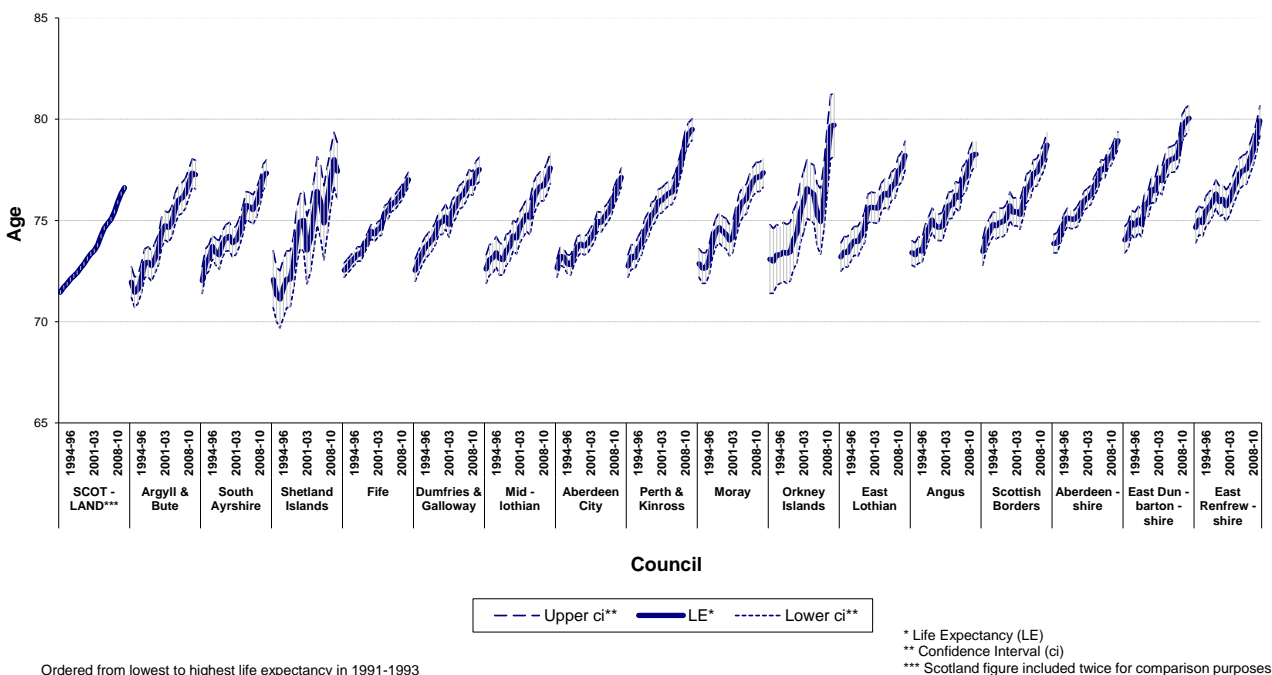


Figure 6: Life expectancy at birth in Scotland, 1991-1993 to 2010-2012, by Council area, Females

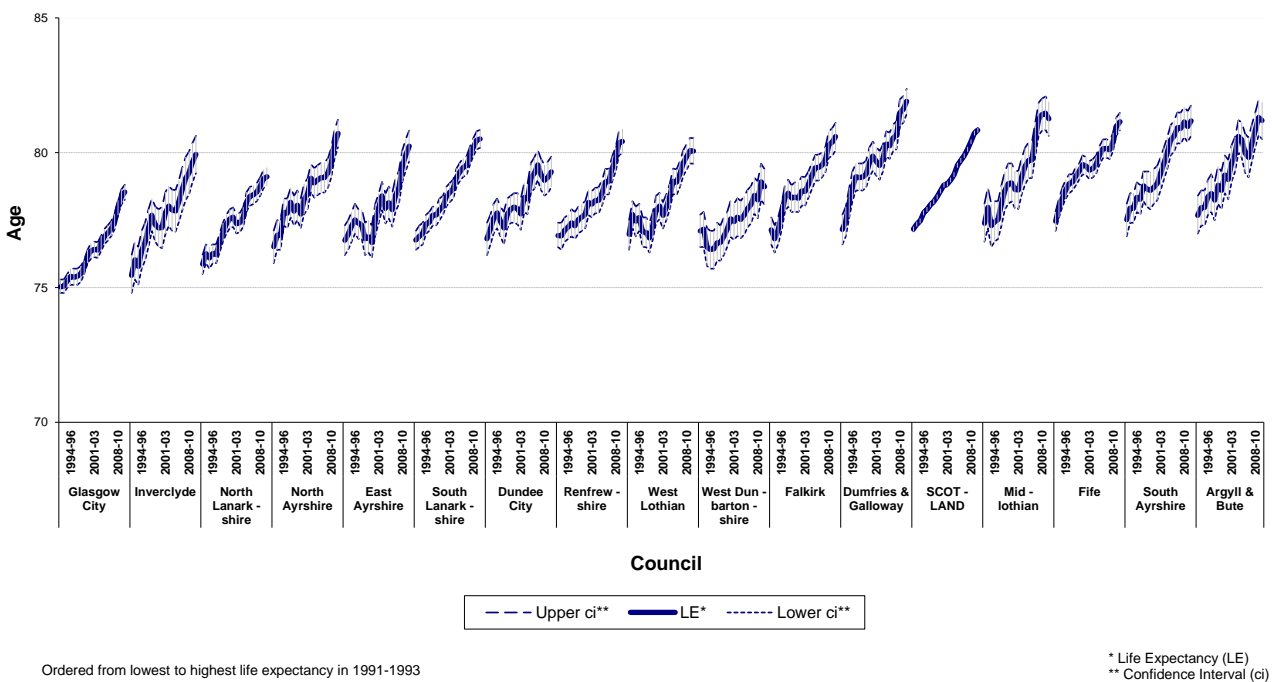
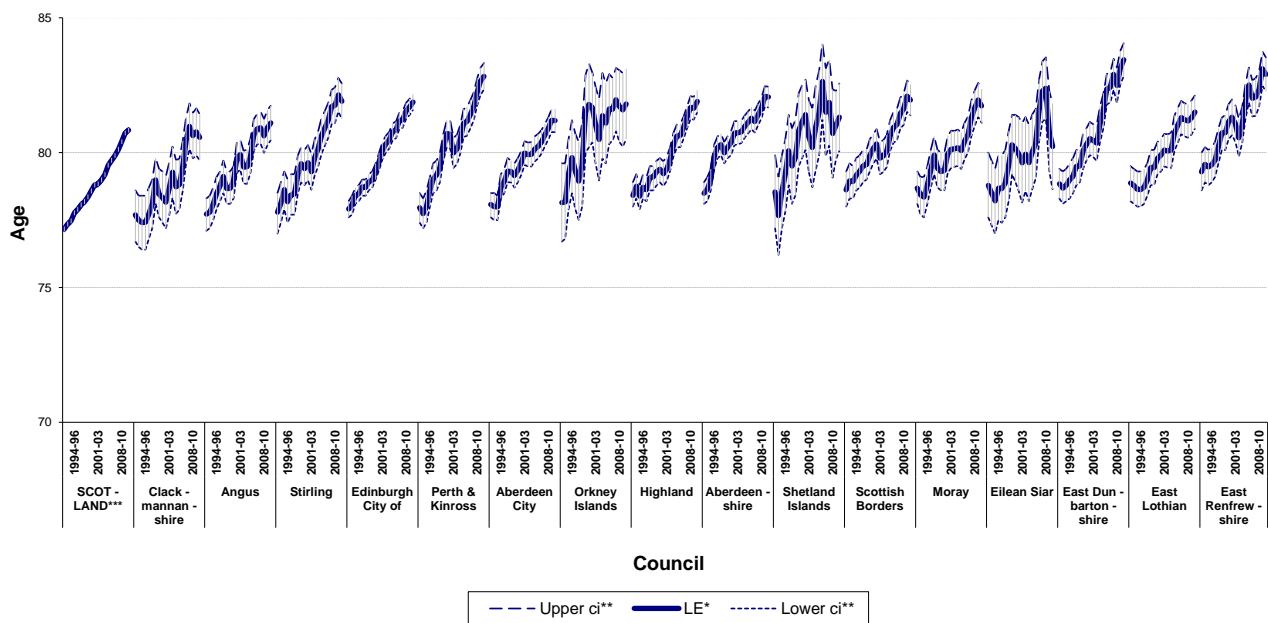


Figure 6: Life expectancy at birth in Scotland, 1991-1993 to 2010-2012, by Council area, Females (continued)

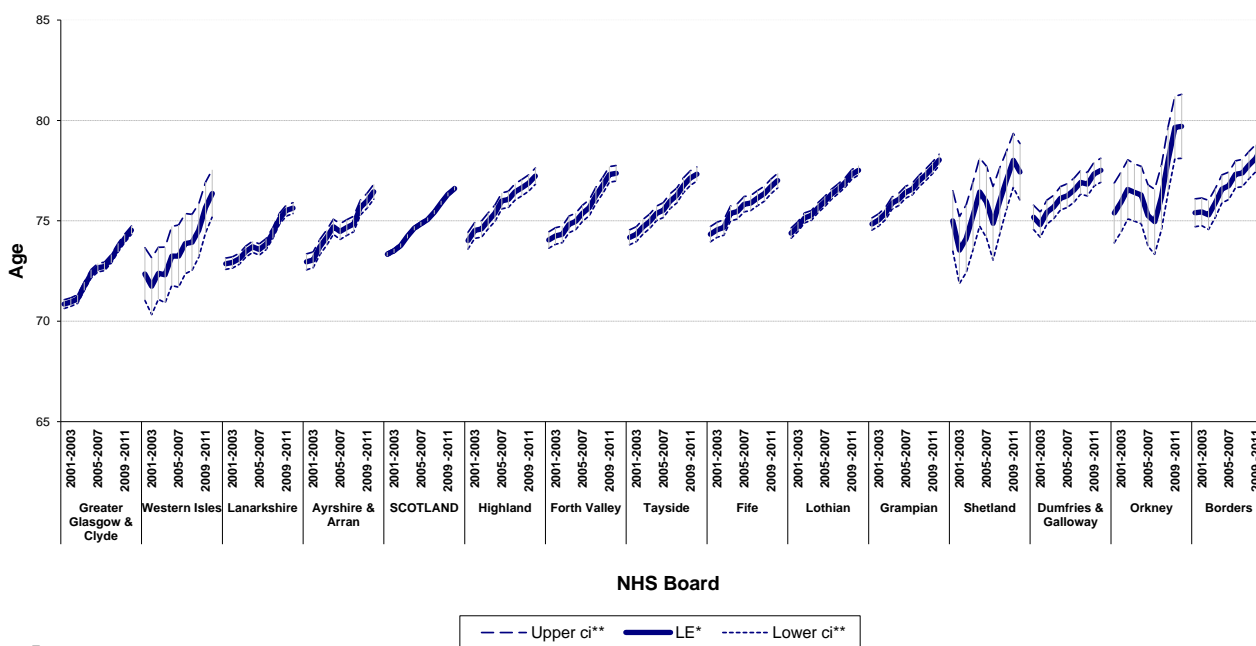


* Life Expectancy (LE)
 ** Confidence Interval (ci)
 *** Scotland figure included twice for comparison purposes

5.2 NHS Board areas

5.2.1 Figure 7 shows how male life expectancy has changed in NHS Board areas since 2000-2002 and is ordered from left to right by the lowest to highest life expectancy in 2000-2002. Figure 8 shows the same information for female life expectancy in NHS Board areas. Time series presented starts at 2000-2002 because life expectancy estimates for earlier years at new 2014 NHS Board area level are not currently available.

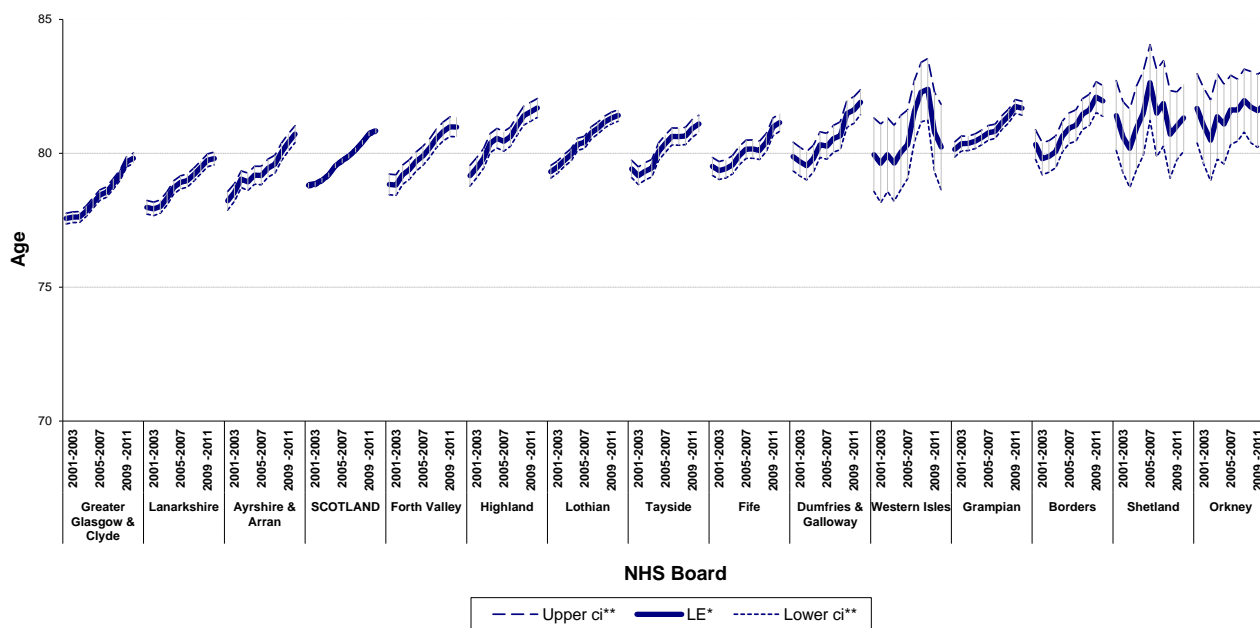
Figure 7: Life expectancy at birth in Scotland, 2000-2002 to 2010-2012, by NHS Board area¹, Males



Footnote
 1) 2014 NHS Board areas.

* Life Expectancy (LE)
 ** Confidence Interval (ci)

Figure 8: Life expectancy at birth in Scotland, 2000-2002 to 2010-2012, by NHS Board area¹, Females



Footnote

1) 2014 NHS Board areas.

Ordered from lowest to highest life expectancy in 2000-2002

* Life Expectancy (LE)

** Confidence Interval (ci)

5.2.2 [Table 3](#) and [Table 4](#) compare male and female life expectancies in 2010-2012 with those for 2000-2002 and 2005-2007 and give rankings for each area in the respective years. Comparisons made between these rankings are subject to the margin of error within the life expectancy estimates.

5.2.3 Male life expectancy has risen in all NHS Board areas since 2000-2002, with Orkney showing the biggest improvement, increasing by 5.7 per cent (4.3 years). Although male life expectancy in Greater Glasgow & Clyde remained at the same ranking of 14, it was third in terms of improvement, having increased by 5.2 per cent (3.7 years) since 2000-2002.

5.2.4 Female life expectancy increased in all areas except in Shetland where there were no significant changes ([Section 2.2](#)). Highland NHS Board saw the biggest improvement, rising by 3.2 per cent (2.5 years).

6. Life expectancy at age 65, 2010-2012, geographical variations

6.1 Council areas

6.1.1 [Table 5](#) shows life expectancy at age 65 in Scotland for 2010-2012 for Council areas along with their respective rankings.

6.1.2 Males aged 65 in Orkney Islands, the Council area with the highest life expectancy at age 65 (19.4 years) could expect to live 4.5 years longer than those in Glasgow City, which had the lowest (14.9 years).

6.1.3 The gap between the Council area with the highest and lowest female life expectancy at age 65 is narrower than that for males of the same age. Females aged 65 in East Dunbartonshire could expect to live for a further 21.5 years, 3.2 years longer than those in Glasgow City, whose life expectancy at age 65 is estimated to be 18.3 years.

6.2 NHS Board areas

6.2.1 [Table 5](#) shows life expectancy at age 65 in Scotland for 2010-2012 for NHS Board areas along with a ranking for each area.

6.2.2 Males in Orkney NHS Board area have the highest life expectancy at age 65 (19.4 years). The lowest figure is in Greater Glasgow & Clyde, where males aged 65 can expect to live for a further 16.1 years.

6.2.3 Female life expectancy at age 65 is highest in Highland NHS Board area (20.3 years) and lowest in Lanarkshire (18.7 years).

7. Differences between the revised life expectancy estimates and previously published estimates

7.1 Life expectancy at Scotland level

7.1.1 Life expectancy estimates for 2000-2002 to 2008-2010 have been revised to use the revised population estimates for 2002 to 2010, published in December 2013. The revised life expectancy estimates based on the 2011 Census are slightly lower than the previously published estimates. For males the differences get larger over time and increase with age, the largest difference observed between the estimates was 0.17 of a year or two months in 2008-2010 at ages 85 and over. The size of the differences between the estimates are smaller for females across the decade with the largest difference of 0.16 of a year or two months in 2002-2004 at age 85 and over.

7.1.2 The majority of the differences are negative, that is life expectancy is lower as a result of the revisions to mid-year population estimates for the years 2002 to 2010. The 2011 Census results showed that the total population of Scotland over the decade from 2001 was underestimated by about 49,500. However, at older ages (from around 65) the 2011 Census identified an overestimate. This means that a reduction in the estimate of the population (the denominator for calculating mortality rates) following the 2011 Census has resulted in an increase in mortality rates at older ages and hence lower life expectancy. Changes in the mortality rates at older ages have had a greater impact on life expectancy than changes occurring at younger ages.

7.2 Council areas

7.2.1 There are wide variations in Council area life expectancy differences for both males and females between the revised and unrevised estimates.

7.2.2 Comparing the 2008-2010 life expectancy estimates where males have the largest difference, Dundee City (11 months) and Shetland Islands with 9 months have the largest decrease in life expectancy at age 85 and over. Orkney Islands and East Renfrewshire Council areas have the largest increases in male life expectancy at 9 months and 5 months respectively. Fife and Dumfries & Galloway had the smallest differences between the revised life expectancy estimates and the previously published estimates for older ages.

7.2.3 For females, 2008-2010 life expectancy estimates also had the biggest differences at Council area level. Fife (8 months) and Dundee City (6 months) Council areas had the largest decrease in life expectancy between the revised and previously published estimates. Scottish Borders and Angus Council areas had the largest life expectancy increases at 7 months and 3 months respectively. Clackmannanshire and West Dunbartonshire Council areas had the smallest differences between the revised and previously published life expectancy estimates.

7.2.4 More information on how the population estimates for 2002 to 2011 were revised is available within the [Mid-Year Population Estimates](#) section of the NRS website along with a report reconciling the differences between the new population estimates which took into account the 2011 Census results and those previously published based on the 2001 Census.

8. Further information

8.1 Life expectancy at birth

- 8.1.1 The Office for National Statistics (ONS) produces national life tables for the UK and constituent countries, which provide estimates of period life expectancy. Responsibility for the production of national life expectancy figures transferred to ONS from the Government Actuary's Department (GAD) on 31 January 2006.
- 8.1.2 Every ten years a set of graduated (smoothed) life tables for Scotland is published for some years. They are available for the years 1930-1932 to 2000-2002 (excluding 1940-1942) and are available from the [Office for National Statistics](#) and [National Records of Scotland](#) (NRS) websites.
- 8.1.3 Also available on the [ONS website](#) are ungraduated national life tables (formerly called interim life tables). These are produced annually for Scotland, based on data for a period of three consecutive calendar years.
- 8.1.4 Because of the differences between complete (single year of age) and abridged (grouped years) life tables, the abridged figures presented in this report for Scotland, England, Northern Ireland and Wales may differ slightly from the national figures published by ONS, which are complete and are the definitive life expectancies for these countries. A detailed description of the standard methods and notation associated with the calculation of life expectancy by ONS is available in the [Guide to Calculating National Life Tables](#) section of their website.
- 8.1.15 Period life expectancies are worked out using the age-specific mortality rates for a given period (either a single year, or aggregated years) which make no allowance for any later actual or projected changes in future mortality. Cohort life expectancies are worked out using age-specific mortality rates which allow for known or projected changes in mortality in later years. Period and cohort life expectancies based on projected mortality rates from the 2012-based national population projections can be accessed from the [ONS website](#).
- 8.1.6 ONS published Scotland-level ungraduated national life tables for 2010-2012 and the revised 2000-02 to 2009-11 to take account of the revised population estimates based on the 2011 Census on 21 March 2014. These figures are also available in the Life Expectancy pages of the NRS website, within the ['Life Expectancy at Scotland Level'](#) section.
- 8.1.7 Life expectancy figures used for international comparisons are taken from Table tps00025 of the [Eurostat](#) website. Further information on [mortality and life expectancy](#) can also be found on the Eurostat website.

8.2 Life expectancy for areas in Scotland

- 8.2.1 Previous NRS publications dedicated to life expectancy in administrative areas (Council and NHS Board) and special areas (Community Health Partnership, Urban/Rural and Deprivation) within Scotland can be found in the [Life Expectancy in Scottish Areas](#) (archives section) of the NRS website.
- 8.2.2 Figures for 2010-2012 will also be published by ONS on 16 April 2014. Earlier life expectancy tables for Scottish Council and NHS Board areas, back to 1981-1983 (in the form of abridged life tables) are available in the [Life Expectancy in Scottish Areas](#) (archive section) of the NRS website.

8.2.3 All the tables for the revised life expectancy in administrative areas at Council and NHS Board areas from 2000-02 to 2009-11 can be found in the [Life Expectancy in Scottish Areas](#) section of the NRS website.

8.3 **Healthy Life Expectancy**

Healthy Life Expectancy (HLE) is defined as the number of years people can expect to live in good health. The difference between life expectancy and HLE indicates the length of time people can expect to spend in poor health. Information on HLE in Scotland was first published in 2004 by the Information Services Division (ISD) of the NHS in Scotland. Up to date information on the topic can be found on the Scottish Public Health Observatory ([ScotPHO](#)) website.

8.4 **Other data available from the National Records of Scotland**

Estimates of the resident population of Scotland are prepared by NRS each year. These are available by sex and single year of age for Council and NHS Board areas, together with historical data. Information is also available on a wide range of related topics such as small area population estimates, population projections, migration estimates and data from the 2001 and earlier censuses. For further information please go to the [National Records of Scotland](#) website.

or contact

Statistics Customer Services
National Records of Scotland
Ladywell House
Edinburgh
EH12 7TF
Telephone: 0131 314 4299
Fax: 0131 314 4696
Email: customer@gro-scotland.gsi.gov.uk

9. Notes and definitions

NHS Board areas

The composition of the NHS Board areas in terms of Council areas is summarised in the table below. From 1 April 2014 the boundaries of NHS Board areas were aligned with Council areas. The tables presented in this publication show information for the new NHS Board areas.

NHS Board area	Council area
Ayrshire & Arran	East Ayrshire, North Ayrshire, South Ayrshire
Borders	Scottish Borders
Dumfries & Galloway	Dumfries & Galloway
Fife	Fife
Forth Valley	Clackmannanshire, Falkirk, Stirling
Grampian	Aberdeen City, Aberdeenshire, Moray
Greater Glasgow & Clyde	East Dunbartonshire, East Renfrewshire, Glasgow City, Inverclyde, Renfrewshire, West Dunbartonshire
Highland	Argyll & Bute, Highland
Lanarkshire	North Lanarkshire, South Lanarkshire
Lothian	East Lothian, City of Edinburgh, Midlothian, West Lothian
Orkney	Orkney Islands
Shetland	Shetland Islands
Tayside	Angus, Dundee City, Perth & Kinross
Western Isles	Eilean Siar

Life expectancy estimates for the old NHS Board areas are also available on the NRS website. Going forward only estimates for the new boundaries will be published.

Table 1: Abridged life table, by sex, age and Council area, Scotland, 2010-2012

Age x	Scotland ¹				Aberdeen City				Aberdeenshire				Angus				Argyll & Bute			
	Males		Females		Males		Females		Males		Females		Males		Females		Males		Females	
	l_x	e_x°	l_x	e_x°	l_x	e_x°	l_x	e_x°	l_x	e_x°	l_x	e_x°	l_x	e_x°	l_x	e_x°	l_x	e_x°	l_x	e_x°
0	100,000	76.61	100,000	80.83	100,000	77.13	100,000	81.19	100,000	78.94	100,000	82.06	100,000	78.27	100,000	81.10	100,000	77.26	100,000	81.20
1	99,573	75.94	99,678	80.09	99,655	76.39	99,639	80.48	99,659	78.21	99,764	81.26	99,592	77.59	99,260	80.71	99,915	76.33	99,753	80.40
5	99,504	71.99	99,615	76.14	99,569	72.46	99,609	76.50	99,574	74.28	99,719	77.29	99,592	73.59	99,205	76.75	99,915	72.33	99,589	76.53
10	99,439	67.04	99,579	71.17	99,569	67.46	99,573	71.53	99,370	69.42	99,647	72.35	99,592	68.59	99,149	71.79	99,840	67.38	99,429	71.65
15	99,392	62.07	99,541	66.19	99,501	62.50	99,536	66.56	99,349	64.44	99,601	67.38	99,496	63.65	99,149	66.79	99,840	62.38	99,429	66.65
20	99,159	57.21	99,412	61.28	99,284	57.63	99,440	61.62	99,077	59.61	99,446	62.48	99,173	58.85	98,810	62.01	99,718	57.45	99,223	61.78
25	98,784	52.41	99,261	56.37	99,180	52.69	99,356	56.67	98,602	54.88	99,285	57.58	98,752	54.09	98,695	57.08	99,195	52.74	98,967	56.93
30	98,226	47.70	99,030	51.49	98,626	47.97	99,119	51.80	98,179	50.11	99,063	52.70	98,312	49.33	98,368	52.26	98,673	48.01	98,716	52.07
35	97,467	43.05	98,705	46.65	97,964	43.28	98,834	46.94	97,657	45.36	98,842	47.81	97,246	44.84	98,053	47.42	97,511	43.55	98,545	47.16
40	96,515	38.45	98,232	41.87	97,187	38.61	98,387	42.14	96,954	40.68	98,426	43.00	96,550	40.14	97,641	42.61	96,489	38.99	98,081	42.37
45	95,311	33.90	97,547	37.14	96,048	34.03	97,760	37.40	96,390	35.90	97,870	38.23	95,341	35.62	96,731	37.99	95,453	34.38	97,619	37.56
50	93,765	29.42	96,535	32.51	94,522	29.54	96,813	32.74	95,602	31.17	97,131	33.51	94,247	31.01	95,811	33.33	94,090	29.84	96,565	32.94
55	91,491	25.09	94,885	28.03	92,101	25.25	95,280	28.23	94,280	26.58	95,964	28.88	92,487	26.55	94,418	28.78	91,865	25.51	94,684	28.54
60	87,947	21.00	92,532	23.68	88,580	21.16	93,140	23.82	91,515	22.30	94,085	24.41	89,913	22.24	92,085	24.45	88,280	21.44	92,227	24.24
65	82,766	17.16	88,870	19.55	83,424	17.31	89,100	19.78	87,597	18.19	91,123	20.12	85,749	18.20	89,133	20.18	83,052	17.63	88,612	20.13
70	75,198	13.63	83,328	15.68	76,024	13.75	83,817	15.87	81,420	14.38	86,355	16.10	79,721	14.38	84,177	16.22	75,645	14.12	83,134	16.29
75	64,071	10.57	74,823	12.18	64,626	10.74	76,365	12.18	71,644	11.00	78,461	12.46	69,457	11.14	76,377	12.62	65,685	10.88	75,742	12.63
80	49,626	7.92	62,387	9.11	49,750	8.20	63,387	9.16	56,738	8.23	66,227	9.30	55,303	8.35	64,631	9.46	53,241	7.83	63,919	9.51
85	32,041	5.89	45,120	6.64	32,017	6.36	46,107	6.65	36,702	6.36	48,629	6.77	36,390	6.39	47,891	6.89	35,453	5.51	48,170	6.80

Table 1 (continued)

Age x	Clackmannanshire				Dumfries and Galloway				Dundee City				East Ayrshire				East Dunbartonshire			
	Males		Females		Males		Females		Males		Females		Males		Females		Males		Females	
	l_x	e_x°	l_x	e_x°	l_x	e_x°	l_x	e_x°	l_x	e_x°	l_x	e_x°	l_x	e_x°	l_x	e_x°	l_x	e_x°	l_x	e_x°
0	100,000	77.01	100,000	80.57	100,000	77.52	100,000	81.91	100,000	74.34	100,000	79.29	100,000	76.14	100,000	80.24	100,000	80.05	100,000	83.45
1	99,783	76.18	99,891	79.66	99,472	76.93	99,768	81.10	99,257	73.89	99,723	78.51	99,494	75.52	99,654	79.52	99,864	79.16	99,635	82.75
5	99,783	72.18	99,891	75.66	99,300	73.06	99,680	77.17	99,134	69.98	99,679	74.54	99,494	71.52	99,603	75.56	99,802	75.21	99,570	78.81
10	99,783	67.18	99,891	70.66	99,257	68.09	99,680	72.17	98,995	65.08	99,531	69.65	99,393	66.60	99,551	70.60	99,802	70.21	99,509	73.85
15	99,783	62.18	99,778	65.73	99,257	63.09	99,638	67.20	98,819	60.19	99,438	64.71	99,205	61.72	99,501	65.63	99,703	65.27	99,455	68.89
20	99,477	57.36	99,672	60.80	98,962	58.27	99,522	62.27	98,462	55.40	99,375	59.75	98,869	56.92	99,324	60.75	99,657	60.30	99,354	63.96
25	99,030	52.61	99,434	55.94	98,320	53.63	99,478	57.30	97,953	50.67	99,145	54.88	98,341	52.21	99,146	55.85	99,502	55.39	99,236	59.03
30	98,691	47.78	98,872	51.24	97,458	49.08	99,254	52.42	97,399	45.95	98,698	50.12	97,575	47.60	98,732	51.07	98,938	50.69	99,080	54.12
35	97,923	43.14	98,764	46.30	96,510	44.54	98,979	47.56	96,448	41.38	98,167	45.38	96,921	42.90	98,404	46.24	98,010	46.15	98,876	49.23
40	96,648	38.67	98,375	41.47	95,880	39.82	98,741	42.67	94,792	37.06	97,330	40.75	95,930	38.32	97,989	41.42	97,517	41.37	98,557	44.38
45	95,259	34.20	97,517	36.81	95,114	35.12	98,205	37.89	93,068	32.70	96,254	36.18	94,775	33.76	97,437	36.64	96,886	36.62	98,202	39.53
50	93,970	29.64	96,686	32.11	94,194	30.44	97,201	33.25	91,133	28.34	94,893	31.66	93,358	29.23	96,357	32.03	95,850	31.99	97,534	34.78
55	91,779	25.28	94,197	27.89	92,069	26.08	95,970	28.65	88,823	24.01	92,806	27.31	91,202	24.86	94,523	27.60	94,119	27.54	95,933	30.32
60	89,017	20.99	92,180	23.45	89,215	21.84	94,223	24.13	84,695	20.06	90,216	23.03	87,602	20.78	92,278	23.21	91,792	23.17	94,313	25.80
65	84,991	16.87	88,012	19.44	84,716	17.86	90,769	19.96	79,312	16.25	85,640	19.12	82,195	16.99	88,478	19.10	87,568	19.17	91,570	21.50
70	74,654	13.86	82,374	15.60	78,184	14.15	85,775	15.97	70,786	12.90	79,067	15.51	74,469	13.49	82,407	15.32	81,160	15.48	87,022	17.49
75	65,260	10.49	73,696	12.14	68,250	10.84	77,789	12.36	58,025	10.19	69,530	12.29	63,630	10.36	73,514	11.87	72,487	12.04	79,948	13.82
80	51,145	7.70	60,345	9.27	54,691	7.91	66,049	9.11	43,033	7.87	57,451	9.35	49,187	7.67	59,258	9.13	60,088	9.01	70,545	10.32
85	32,945	5.57	43,693	6.85	36,592	5.59	47,900	6.61	27,367	5.95	41,601	6.96	31,428	5.59	42,455	6.75	41,355	6.95	53,342	7.85

Table 1: Abridged life table, by sex, age and Council area, Scotland, 2010-2012 (continued)

Age x	East Lothian				East Renfrewshire				Edinburgh, City of				Eilean Siar				Falkirk			
	Males		Females		Males		Females		Males		Females		Males		Females		Males		Females	
	l_x	e_x°	l_x	e_x°	l_x	e_x°	l_x	e_x°	l_x	e_x°	l_x	e_x°	l_x	e_x°	l_x	e_x°	l_x	e_x°	l_x	e_x°
0	100,000	78.21	100,000	81.50	100,000	79.92	100,000	82.90	100,000	77.38	100,000	81.87	100,000	76.37	100,000	80.23	100,000	76.92	100,000	80.60
1	99,711	77.44	99,647	80.79	99,857	79.04	99,619	82.22	99,496	76.78	99,739	81.09	100,000	75.37	98,405	80.53	99,614	76.22	99,566	79.95
5	99,602	73.52	99,590	76.83	99,857	75.04	99,619	78.22	99,483	72.79	99,673	77.14	100,000	71.37	98,405	76.53	99,579	72.25	99,459	76.03
10	99,544	68.56	99,590	71.83	99,738	70.12	99,619	73.22	99,437	67.82	99,673	72.14	100,000	66.37	98,405	71.53	99,503	67.30	99,300	71.15
15	99,488	63.60	99,590	66.83	99,686	65.16	99,563	68.26	99,422	62.83	99,657	67.15	100,000	61.37	98,190	66.68	99,466	62.32	99,221	66.20
20	99,436	58.63	99,332	62.00	99,581	60.22	99,563	63.26	99,256	57.93	99,510	62.25	99,787	56.49	98,190	61.68	99,263	57.45	99,073	61.30
25	99,057	53.84	99,213	57.07	99,395	55.33	99,496	58.30	99,044	53.05	99,361	57.34	98,829	52.01	97,895	56.86	98,894	52.65	98,921	56.39
30	98,273	49.25	99,016	52.18	98,302	50.92	99,313	53.40	98,761	48.19	99,205	52.42	98,312	47.27	97,352	52.16	98,375	47.91	98,852	51.43
35	97,505	44.62	98,645	47.37	97,871	46.13	99,014	48.56	98,094	43.50	98,942	47.55	97,576	42.61	96,668	47.51	97,766	43.20	98,721	46.49
40	96,523	40.05	98,447	42.46	97,471	41.31	98,660	43.72	97,215	38.87	98,624	42.70	97,375	37.69	96,270	42.70	96,913	38.56	98,142	41.75
45	95,746	35.36	97,901	37.68	96,854	36.56	98,090	38.96	95,999	34.33	97,931	37.98	96,900	32.87	96,270	37.70	96,084	33.87	97,631	36.96
50	94,183	30.90	96,704	33.12	95,698	31.97	97,485	34.19	94,785	29.74	97,012	33.32	95,221	28.40	95,960	32.81	94,953	29.24	96,676	32.30
55	92,022	26.57	95,008	28.66	94,340	27.40	96,298	29.58	92,456	25.43	95,461	28.82	91,930	24.33	93,555	28.59	92,967	24.81	94,760	27.90
60	89,175	22.34	93,048	24.22	92,176	22.98	94,418	25.12	88,552	21.44	93,173	24.47	89,047	20.04	91,657	24.13	89,673	20.63	92,260	23.59
65	84,755	18.37	89,761	20.01	87,977	18.96	91,496	20.84	83,174	17.66	89,845	20.28	83,144	16.28	87,626	20.13	84,537	16.73	89,218	19.31
70	78,639	14.61	84,805	16.03	81,527	15.26	87,902	16.59	75,841	14.13	84,708	16.36	74,038	12.98	83,114	16.08	76,802	13.17	83,366	15.49
75	69,102	11.28	76,803	12.44	72,977	11.75	79,596	13.06	65,427	10.98	77,071	12.73	63,026	9.81	76,019	12.35	64,592	10.18	74,917	11.95
80	56,501	8.23	64,357	9.37	59,121	8.92	68,706	9.73	51,804	8.21	65,486	9.54	47,016	7.30	65,831	8.88	49,176	7.59	62,664	8.80
85	36,843	6.29	48,492	6.61	39,360	7.15	52,148	7.03	33,878	6.23	49,276	6.86	29,181	5.23	48,191	6.21	29,859	5.88	45,612	6.15

Table 1 (continued)

Age x	Fife				Glasgow City				Highland				Inverclyde				Midlothian			
	Males		Females		Males		Females		Males		Females		Males		Females		Males		Females	
	l_x	e_x°	l_x	e_x°	l_x	e_x°	l_x	e_x°	l_x	e_x°	l_x	e_x°	l_x	e_x°	l_x	e_x°	l_x	e_x°	l_x	e_x°
0	100,000	77.01	100,000	81.15	100,000	72.61	100,000	78.54	100,000	77.23	100,000	81.90	100,000	73.73	100,000	79.94	100,000	77.59	100,000	81.26
1	99,410	76.47	99,570	80.50	99,481	71.99	99,621	77.84	99,549	76.58	99,578	81.24	99,767	72.91	99,735	79.15	99,487	76.99	99,729	80.48
5	99,363	72.50	99,504	76.55	99,410	68.04	99,528	73.91	99,422	72.68	99,497	77.31	99,615	69.01	99,735	75.15	99,289	73.14	99,661	76.54
10	99,313	67.54	99,504	71.55	99,316	63.11	99,478	68.94	99,318	67.75	99,415	72.37	99,615	64.01	99,735	70.15	99,220	68.19	99,661	71.54
15	99,281	62.56	99,470	66.57	99,260	58.14	99,443	63.97	99,318	62.75	99,389	67.39	99,470	59.10	99,735	65.15	99,220	63.19	99,661	66.54
20	99,045	57.70	99,382	61.63	99,128	53.21	99,355	59.02	98,911	58.00	99,262	62.47	99,144	54.29	99,468	60.32	99,095	58.27	99,528	61.62
25	98,705	52.89	99,248	56.71	98,801	48.38	99,225	54.09	98,314	53.34	99,113	57.56	98,699	49.52	99,401	55.35	98,753	53.46	99,459	56.66
30	98,139	48.18	98,967	51.86	98,215	43.66	99,018	49.20	97,533	48.74	98,986	52.63	98,000	44.86	98,834	50.66	98,222	48.74	99,169	51.82
35	97,166	43.64	98,598	47.05	97,368	39.01	98,669	44.37	96,832	44.08	98,574	47.84	96,894	40.34	98,177	45.98	97,784	43.94	98,970	46.92
40	96,378	38.98	98,202	42.23	95,991	34.54	97,820	39.73	96,041	39.42	98,276	42.98	94,951	36.12	97,527	41.27	97,013	39.27	98,605	42.09
45	95,222	34.42	97,501	37.51	94,158	30.16	96,791	35.13	94,971	34.84	97,829	38.17	93,589	31.61	96,825	36.55	95,941	34.68	98,119	37.28
50	93,715	29.93	96,534	32.86	91,341	26.01	95,437	30.59	93,588	30.31	96,854	33.52	91,057	27.41	95,950	31.86	94,675	30.11	97,069	32.66
55	91,717	25.53	95,066	28.33	87,623	22.01	93,224	26.26	91,361	25.99	95,355	29.01	88,143	23.24	94,587	27.28	93,086	25.58	95,691	28.09
60	88,482	21.37	92,757	23.98	81,888	18.38	89,871	22.14	88,141	21.85	93,275	24.60	83,650	19.35	91,217	23.20	89,716	21.45	94,171	23.50
65	83,935	17.39	89,308	19.81	74,539	14.94	85,037	18.26	83,791	17.86	89,928	20.43	77,042	15.80	87,668	19.04	85,090	17.48	90,184	19.43
70	77,074	13.72	84,056	15.89	64,287	11.93	77,595	14.77	77,465	14.11	84,983	16.47	67,624	12.65	82,027	15.18	77,947	13.85	85,165	15.43
75	66,332	10.54	76,410	12.23	50,679	9.46	67,341	11.64	67,138	10.90	76,946	12.93	54,545	10.08	72,818	11.78	66,773	10.75	77,464	11.72
80	51,489	7.85	63,406	9.22	36,513	7.16	54,025	8.89	53,587	8.02	66,852	9.50	40,609	7.69	59,975	8.77	51,803	8.14	63,898	8.67
85	33,434	5.75	46,268	6.71	21,227	5.51	37,830	6.63	35,514	5.83	50,218	6.82	24,982	5.93	43,547	6.13	32,322	6.54	44,852	6.30

Table 1: Abridged life table, by sex, age and Council area, Scotland, 2010-2012 (continued)

Age x	Moray				North Ayrshire				North Lanarkshire				Orkney Islands				Perth & Kinross			
	Males		Females		Males		Females		Males		Females		Males		Females		Males		Females	
	l_x	e_x°	l_x	e_x°	l_x	e_x°	l_x	e_x°	l_x	e_x°	l_x	e_x°	l_x	e_x°	l_x	e_x°	l_x	e_x°	l_x	e_x°
0	100,000	77.36	100,000	81.73	100,000	76.03	100,000	80.72	100,000	74.93	100,000	79.11	100,000	79.71	100,000	81.81	100,000	79.50	100,000	82.83
1	99,592	76.67	99,715	80.97	99,229	75.62	99,770	79.90	99,446	74.34	99,607	78.42	99,404	79.18	99,677	81.07	99,910	78.57	99,815	81.99
5	99,531	72.72	99,649	77.02	99,186	71.65	99,679	75.97	99,367	70.40	99,574	74.45	99,404	75.18	99,677	77.07	99,821	74.64	99,629	78.13
10	99,531	67.72	99,649	72.02	99,186	66.65	99,679	70.97	99,317	65.43	99,556	69.46	99,087	70.42	99,677	72.07	99,821	69.64	99,629	73.13
15	99,416	62.80	99,463	67.15	99,104	61.70	99,636	66.00	99,270	60.47	99,540	64.47	99,087	65.42	99,677	67.07	99,821	64.64	99,629	68.13
20	99,096	57.99	99,289	62.26	98,812	56.88	99,520	61.08	99,029	55.61	99,378	59.57	98,836	60.57	99,677	62.07	99,639	59.75	99,471	63.24
25	98,799	53.16	99,146	57.35	98,224	52.20	99,396	56.15	98,654	50.81	99,190	54.68	98,280	55.90	99,048	57.45	99,133	55.04	99,333	58.32
30	97,960	48.59	99,083	52.38	97,845	47.40	99,220	51.24	98,027	46.12	99,057	49.75	97,676	51.23	99,048	52.45	98,682	50.28	99,210	53.39
35	97,456	43.83	98,622	47.62	96,921	42.82	98,779	46.46	97,189	41.49	98,670	44.94	97,357	46.39	98,447	47.76	98,299	45.47	99,122	48.44
40	96,497	39.24	98,233	42.80	95,513	38.42	98,249	41.70	96,213	36.89	98,162	40.16	96,786	41.65	98,447	42.76	97,635	40.76	98,704	43.63
45	95,634	34.57	97,815	37.97	93,999	34.00	97,852	36.86	94,681	32.44	97,334	35.48	95,741	37.08	98,242	37.84	96,741	36.11	98,027	38.92
50	94,447	29.97	97,236	33.18	92,317	29.57	96,741	32.25	92,869	28.03	96,217	30.86	95,020	32.34	97,665	33.05	95,880	31.41	97,119	34.26
55	92,231	25.63	96,306	28.47	90,337	25.17	94,787	27.87	90,308	23.75	94,330	26.43	94,053	27.65	96,005	28.58	93,721	27.08	95,743	29.71
60	88,818	21.52	94,139	24.07	86,657	21.13	92,547	23.48	86,296	19.74	91,442	22.18	91,479	23.36	93,116	24.39	91,617	22.65	93,858	25.26
65	83,958	17.63	91,264	19.75	80,937	17.44	88,902	19.34	80,331	16.02	86,630	18.28	86,939	19.45	90,537	20.01	87,239	18.66	91,000	20.97
70	77,544	13.88	85,650	15.88	73,464	13.96	83,044	15.53	71,429	12.71	80,399	14.50	80,699	15.76	85,931	15.95	81,258	14.85	86,697	16.89
75	67,367	10.59	78,012	12.19	62,145	11.05	74,658	11.99	58,869	9.88	70,651	11.15	72,543	12.25	78,194	12.28	71,743	11.48	80,193	13.06
80	51,863	8.01	65,430	9.06	48,759	8.40	61,907	8.95	43,113	7.58	56,934	8.24	57,764	9.74	67,976	8.75	59,598	8.31	69,182	9.74
85	34,041	5.90	47,927	6.45	34,084	5.94	43,405	6.70	27,242	5.54	37,929	6.12	42,953	7.24	48,625	6.23	41,450	5.86	52,727	7.00

Table 1 (continued)

Age x	Renfrewshire				Scottish Borders				Shetland Islands				South Ayrshire				South Lanarkshire			
	Males		Females		Males		Females		Males		Females		Males		Females		Males		Females	
	l_x	e_x°	l_x	e_x°	l_x	e_x°	l_x	e_x°	l_x	e_x°	l_x	e_x°	l_x	e_x°	l_x	e_x°	l_x	e_x°	l_x	e_x°
0	100,000	75.26	100,000	80.42	100,000	78.72	100,000	81.95	100,000	77.43	100,000	81.32	100,000	77.34	100,000	81.18	100,000	76.37	100,000	80.51
1	99,525	74.61	99,724	79.64	99,773	77.90	99,580	81.30	100,000	76.43	99,720	80.55	99,507	76.72	99,622	80.49	99,777	75.54	99,882	79.61
5	99,422	70.69	99,653	75.69	99,658	73.99	99,580	77.30	100,000	72.43	99,720	76.55	99,507	72.72	99,622	76.49	99,702	71.60	99,824	75.65
10	99,386	65.71	99,580	70.75	99,603	69.03	99,522	72.34	100,000	67.43	99,720	71.55	99,448	67.77	99,622	71.49	99,682	66.61	99,784	70.68
15	99,287	60.78	99,580	65.75	99,552	64.06	99,470	67.38	99,768	62.58	99,720	66.55	99,448	62.77	99,622	66.49	99,664	61.62	99,765	65.70
20	99,136	55.87	99,516	60.79	99,092	59.35	99,365	62.45	99,341	57.84	99,720	61.55	99,093	57.98	99,468	61.59	99,374	56.79	99,694	60.74
25	98,721	51.09	99,392	55.86	98,652	54.60	99,240	57.52	98,349	53.40	99,447	56.71	98,611	53.25	99,305	56.69	98,862	52.07	99,543	55.83
30	98,110	46.39	98,989	51.08	98,244	49.82	99,050	52.63	97,615	48.78	99,175	51.86	98,426	48.35	99,076	51.81	98,176	47.42	99,261	50.98
35	97,032	41.88	98,581	46.28	97,457	45.20	98,668	47.82	97,145	44.01	99,175	46.86	97,862	43.61	98,786	46.96	97,416	42.77	98,933	46.14
40	95,797	37.39	98,320	41.40	96,517	40.62	98,190	43.04	96,529	39.27	98,956	41.95	96,987	38.98	98,340	42.16	96,538	38.14	98,539	41.32
45	94,311	32.94	97,643	36.67	95,518	36.02	97,639	38.27	95,366	34.72	97,969	37.35	95,472	34.56	97,595	37.46	95,302	33.60	97,760	36.63
50	92,659	28.48	96,636	32.02	94,580	31.35	96,809	33.58	94,196	30.12	97,233	32.62	94,062	30.04	96,394	32.90	93,871	29.07	96,641	32.02
55	90,166	24.20	94,988	27.53	92,828	26.89	95,574	28.98	92,708	25.56	94,642	28.44	92,432	25.53	95,127	28.30	91,768	24.68	95,181	27.47
60	86,707	20.07	93,009	23.07	90,296	22.58	93,370	24.61	88,379	21.69	92,030	24.18	89,282	21.34	92,993	23.89	88,217	20.58	92,573	23.18
65	80,332	16.46	89,367	18.90	86,461	18.47	90,587	20.29	83,085	17.92	88,428	20.06	85,150	17.26	89,531	19.72	83,058	16.70	88,808	19.05
70	71,964	13.08	83,231	15.11	80,282	14.70	86,584	16.11	76,081	14.34	84,092	15.96	77,660	13.68	84,622	15.72	75,211	13.18	82,648	15.29
75	61,222	9.94	73,617	11.76	71,454	11.20	79,299	12.36	67,486	10.84	76,775	12.25	67,445	10.37	76,073	12.20	62,968	10.26	73,517	11.88
80	46,034	7.39	60,543	8.76	58,061	8.21	67,170	9.14	54,229	7.88	69,358	8.29	51,859	7.74	63,842	9.06	47,989	7.68	60,987	8.80
85	28,921	5.29	42,985	6.32	39,676	5.86	49,541	6.50	35,453	5.73	49,996	5.53	32,952	5.74	45,260	6.76	30,730	5.58	42,997	6.44

Table 1: Abridged life table, by sex, age and Council area, Scotland, 2010-2012 (continued)

Age x	Stirling				West Dunbartonshire				West Lothian			
	Males		Females		Males		Females		Males		Females	
	l_x	e_x^o	l_x	e_x^o	l_x	e_x^o	l_x	e_x^o	l_x	e_x^o	l_x	e_x^o
0	100,000	78.39	100,000	81.91	100,000	74.15	100,000	78.74	100,000	77.10	100,000	80.07
1	99,620	77.69	99,764	81.10	99,580	73.46	99,804	77.89	99,766	76.28	99,838	79.19
5	99,548	73.74	99,764	77.10	99,458	69.55	99,804	73.89	99,710	72.32	99,749	75.26
10	99,350	68.88	99,764	72.10	99,389	64.59	99,804	68.89	99,649	67.36	99,749	70.26
15	99,350	63.88	99,642	67.19	99,389	59.59	99,668	63.98	99,619	62.38	99,718	65.28
20	99,140	59.01	99,437	62.32	99,051	54.79	99,429	59.13	99,414	57.51	99,565	60.38
25	98,952	54.12	99,264	57.43	98,601	50.03	99,203	54.26	98,908	52.79	99,207	55.59
30	98,120	49.56	99,067	52.54	97,951	45.34	98,759	49.49	98,215	48.14	98,910	50.75
35	97,812	44.71	98,725	47.71	97,224	40.66	98,221	44.75	97,522	43.47	98,703	45.85
40	97,013	40.05	98,093	43.00	95,766	36.24	97,305	40.15	96,968	38.70	98,249	41.05
45	96,255	35.35	97,491	38.25	93,872	31.92	96,642	35.41	96,130	34.02	97,578	36.32
50	95,000	30.78	96,656	33.56	91,356	27.73	95,233	30.89	94,486	29.56	96,697	31.62
55	92,990	26.40	95,155	29.05	88,713	23.49	92,950	26.59	92,486	25.15	94,888	27.18
60	90,826	21.96	93,197	24.61	84,514	19.53	90,187	22.33	89,521	20.90	92,837	22.72
65	86,269	17.99	89,780	20.45	78,060	15.94	86,089	18.27	84,342	17.03	88,726	18.66
70	79,649	14.28	85,650	16.31	69,440	12.60	79,619	14.55	77,063	13.40	82,365	14.91
75	69,076	11.08	78,094	12.65	56,987	9.81	70,235	11.16	65,238	10.38	72,325	11.63
80	54,652	8.35	67,085	9.32	41,695	7.49	55,904	8.39	49,593	7.86	59,298	8.64
85	39,675	5.56	48,262	6.97	25,135	5.78	38,729	6.00	31,331	5.99	40,516	6.49

Footnote

1) Please note that the Scotland-level life expectancy estimate shown here is for use only as a comparator for the corresponding sub-Scotland-level figures. The definitive Scotland-level life expectancy estimate (based on national life tables) is published by the Office for National Statistics:

[National Statistics Online - National Life tables](#)

Note: This abridged life table is constructed from the estimated population in 2010, 2011 and 2012 and the total number of deaths registered in these years. The column headed l_x shows the numbers who would survive to the exact age of x out of 100,000 persons who, from birth, were subject to the mortality probabilities indicated by the death records for 2010-2012. Column e_x^o shows the expectation of life, that is, the average number of years of life left to persons aged exactly x who are subject to the 2010-2012 mortality probabilities from age x onwards.

Table 2: Abridged life table, by sex, age and NHS Board area¹, Scotland 2010-2012

Age x	Scotland ²				Ayrshire & Arran				Borders				Dumfries & Galloway				Fife			
	Males		Females		Males		Females		Males		Females		Males		Females		Males		Females	
	l_x	e_x°	l_x	e_x°	l_x	e_x°	l_x	e_x°	l_x	e_x°	l_x	e_x°	l_x	e_x°	l_x	e_x°	l_x	e_x°	l_x	e_x°
0	100,000	76.61	100,000	80.83	100,000	76.45	100,000	80.72	100,000	78.72	100,000	81.95	100,000	77.52	100,000	81.91	100,000	77.01	100,000	81.15
1	99,573	75.94	99,678	80.09	99,401	75.91	99,689	79.97	99,773	77.90	99,580	81.30	99,472	76.93	99,768	81.10	99,410	76.47	99,570	80.50
5	99,504	71.99	99,615	76.14	99,384	71.93	99,637	76.01	99,658	73.99	99,580	77.30	99,300	73.06	99,680	77.17	99,363	72.50	99,504	76.55
10	99,439	67.04	99,579	71.17	99,333	66.96	99,619	71.02	99,603	69.03	99,522	72.34	99,257	68.09	99,680	72.17	99,313	67.54	99,504	71.55
15	99,392	62.07	99,541	66.19	99,240	62.02	99,587	66.04	99,552	64.06	99,470	67.38	99,257	63.09	99,638	67.20	99,281	62.56	99,470	66.57
20	99,159	57.21	99,412	61.28	98,916	57.22	99,439	61.14	99,092	59.35	99,365	62.45	98,962	58.27	99,522	62.27	99,045	57.70	99,382	61.63
25	98,784	52.41	99,261	56.37	98,380	52.52	99,286	56.23	98,652	54.60	99,240	57.52	98,320	53.63	99,478	57.30	98,705	52.89	99,248	56.71
30	98,226	47.70	99,030	51.49	97,915	47.75	99,012	51.38	98,244	49.82	99,050	52.63	97,458	49.08	99,254	52.42	98,139	48.18	98,967	51.86
35	97,467	43.05	98,705	46.65	97,188	43.09	98,652	46.56	97,457	45.20	98,668	47.82	96,510	44.54	98,979	47.56	97,166	43.64	98,598	47.05
40	96,515	38.45	98,232	41.87	96,080	38.56	98,186	41.76	96,517	40.62	98,190	43.04	95,880	39.82	98,741	42.67	96,378	38.98	98,202	42.23
45	95,311	33.90	97,547	37.14	94,691	34.09	97,635	36.99	95,518	36.02	97,639	38.27	95,114	35.12	98,205	37.89	95,222	34.42	97,501	37.51
50	93,765	29.42	96,535	32.51	93,180	29.60	96,507	32.39	94,580	31.35	96,809	33.58	94,194	30.44	97,201	33.25	93,715	29.93	96,534	32.86
55	91,491	25.09	94,885	28.03	91,249	25.17	94,806	27.93	92,828	26.89	95,574	28.98	92,069	26.08	95,970	28.65	91,717	25.53	95,066	28.33
60	87,947	21.00	92,532	23.68	87,759	21.08	92,597	23.53	90,296	22.58	93,370	24.61	89,215	21.84	94,223	24.13	88,482	21.37	92,757	23.98
65	82,766	17.16	88,870	19.55	82,630	17.23	88,962	19.39	86,461	18.47	90,587	20.29	84,716	17.86	90,769	19.96	83,935	17.39	89,308	19.81
70	75,198	13.63	83,328	15.68	75,077	13.71	83,349	15.53	80,282	14.70	86,584	16.11	78,184	14.15	85,775	15.97	77,074	13.72	84,056	15.89
75	64,071	10.57	74,823	12.18	64,258	10.60	74,759	12.03	71,454	11.20	79,299	12.36	68,250	10.84	77,789	12.36	66,332	10.54	76,410	12.23
80	49,626	7.92	62,387	9.11	49,845	7.94	61,712	9.04	58,061	8.21	67,170	9.14	54,691	7.91	66,049	9.11	51,489	7.85	63,406	9.22
85	32,041	5.89	45,120	6.64	32,808	5.76	43,712	6.73	39,676	5.86	49,541	6.50	36,592	5.59	47,900	6.61	33,434	5.75	46,268	6.71

Table 2 (continued)

Age x	Forth Valley				Grampian				Greater Glasgow & Clyde				Highland				Lanarkshire			
	Males		Females		Males		Females		Males		Females		Males		Females		Males		Females	
	l_x	e_x°	l_x	e_x°	l_x	e_x°	l_x	e_x°	l_x	e_x°	l_x	e_x°	l_x	e_x°	l_x	e_x°	l_x	e_x°	l_x	e_x°
0	100,000	77.37	100,000	80.98	100,000	78.04	100,000	81.69	100,000	74.53	100,000	79.81	100,000	77.23	100,000	81.69	100,000	75.63	100,000	79.80
1	99,646	76.64	99,677	80.24	99,647	77.31	99,706	80.93	99,567	73.86	99,658	79.09	99,636	76.51	99,623	81.00	99,601	74.93	99,735	79.02
5	99,607	72.67	99,617	76.29	99,566	73.37	99,663	76.96	99,488	69.91	99,592	75.14	99,540	72.58	99,521	77.08	99,523	70.99	99,690	75.05
10	99,507	67.74	99,531	71.35	99,464	68.45	99,615	72.00	99,419	64.96	99,550	70.17	99,444	67.65	99,419	72.16	99,487	66.02	99,662	70.07
15	99,488	62.76	99,433	66.42	99,411	63.48	99,546	67.04	99,350	60.00	99,511	65.20	99,444	62.65	99,400	67.17	99,453	61.04	99,645	65.08
20	99,265	57.89	99,272	61.52	99,151	58.64	99,412	62.13	99,196	55.09	99,408	60.26	99,117	57.85	99,251	62.27	99,190	56.19	99,526	60.16
25	98,952	53.07	99,099	56.63	98,898	53.79	99,297	57.20	98,864	50.27	99,280	55.34	98,542	53.17	99,075	57.37	98,751	51.43	99,355	55.26
30	98,374	48.36	98,911	51.73	98,349	49.07	99,089	52.31	98,243	45.57	99,015	50.48	97,828	48.54	98,919	52.46	98,098	46.76	99,154	50.36
35	97,813	43.63	98,727	46.82	97,762	44.35	98,806	47.46	97,375	40.95	98,639	45.66	97,017	43.92	98,563	47.64	97,295	42.12	98,795	45.54
40	96,899	39.01	98,165	42.07	96,992	39.68	98,383	42.65	96,111	36.46	97,971	40.95	96,167	39.29	98,222	42.80	96,366	37.50	98,341	40.74
45	95,989	34.36	97,567	37.32	96,169	35.00	97,825	37.88	94,562	32.02	97,158	36.28	95,106	34.70	97,771	37.98	94,976	33.02	97,535	36.05
50	94,793	29.76	96,670	32.64	95,050	30.38	97,039	33.17	92,294	27.74	96,024	31.67	93,729	30.17	96,774	33.35	93,348	28.55	96,418	31.44
55	92,764	25.36	94,775	28.24	93,178	25.94	95,778	28.57	89,339	23.58	94,116	27.27	91,502	25.85	95,170	28.87	91,016	24.22	94,743	26.95
60	89,905	21.09	92,523	23.87	90,029	21.76	93,760	24.13	84,852	19.69	91,359	23.01	88,183	21.73	92,984	24.49	87,236	20.16	91,996	22.68
65	85,143	17.13	89,159	19.68	85,515	17.78	90,442	19.92	78,388	16.11	87,314	18.96	83,579	17.79	89,555	20.33	81,666	16.36	87,702	18.67
70	77,252	13.62	83,876	15.76	78,886	14.07	85,336	15.97	69,356	12.88	81,000	15.25	76,916	14.11	84,442	16.41	73,290	12.94	81,506	14.90
75	66,029	10.51	75,661	12.20	68,450	10.83	77,649	12.30	57,216	10.08	71,475	11.95	66,702	10.89	76,606	12.83	60,881	10.07	72,060	11.53
80	51,127	7.84	63,620	9.03	53,376	8.18	65,040	9.20	42,904	7.61	58,631	9.02	53,488	7.96	65,953	9.50	45,510	7.63	58,938	8.54
85	33,218	5.72	46,097	6.51	34,557	6.27	47,553	6.66	26,369	5.82	41,886	6.62	35,500	5.73	49,592	6.81	28,957	5.57	40,470	6.29

Table 2: Abridged life table, by sex, age and NHS Board area¹, Scotland 2010-2012 (continued)

Age x	Lothian				Orkney				Shetland				Tayside				Western Isles			
	Males		Females		Males		Females		Males		Females		Males		Females		Males		Females	
	l_x	e_x^o	l_x	e_x^o	l_x	e_x^o	l_x	e_x^o	l_x	e_x^o	l_x	e_x^o	l_x	e_x^o	l_x	e_x^o	l_x	e_x^o	l_x	e_x^o
0	100,000	77.51	100,000	81.41	100,000	79.71	100,000	81.81	100,000	77.43	100,000	81.32	100,000	77.33	100,000	81.10	100,000	76.37	100,000	80.23
1	99,580	76.84	99,748	80.62	99,404	79.18	99,677	81.07	100,000	76.43	99,720	80.55	99,562	76.67	99,627	80.40	100,000	75.37	98,405	80.53
5	99,526	72.88	99,678	76.67	99,404	75.18	99,677	77.07	100,000	72.43	99,720	76.55	99,485	72.73	99,532	76.48	100,000	71.37	98,405	76.53
10	99,472	67.92	99,678	71.67	99,087	70.42	99,677	72.07	100,000	67.43	99,720	71.55	99,437	67.76	99,465	71.53	100,000	66.37	98,405	71.53
15	99,449	62.93	99,662	66.68	99,087	65.42	99,677	67.07	99,768	62.58	99,720	66.55	99,351	62.82	99,435	66.55	100,000	61.37	98,190	66.68
20	99,293	58.03	99,500	61.79	98,836	60.57	99,677	62.07	99,341	57.84	99,720	61.55	99,064	57.99	99,268	61.65	99,787	56.49	98,190	61.68
25	99,012	53.19	99,329	56.89	98,280	55.90	99,048	57.45	98,349	53.40	99,447	56.71	98,574	53.27	99,084	56.76	98,829	52.01	97,895	56.86
30	98,608	48.39	99,138	52.00	97,676	51.23	99,048	52.45	97,615	48.78	99,175	51.86	98,078	48.53	98,766	51.94	98,312	47.27	97,352	52.16
35	97,945	43.70	98,880	47.12	97,357	46.39	98,447	47.76	97,145	44.01	99,175	46.86	97,291	43.90	98,437	47.10	97,576	42.61	96,668	47.51
40	97,133	39.05	98,541	42.28	96,786	41.65	98,447	42.76	96,529	39.27	98,956	41.95	96,268	39.34	97,877	42.36	97,375	37.69	96,270	42.70
45	96,072	34.45	97,895	37.54	95,741	37.08	98,242	37.84	95,366	34.72	97,969	37.35	95,000	34.83	97,003	37.72	96,900	32.87	96,270	37.70
50	94,705	29.91	96,933	32.89	95,020	32.34	97,665	33.05	94,196	30.12	97,233	32.62	93,719	30.27	95,939	33.11	95,221	28.40	95,960	32.81
55	92,549	25.55	95,324	28.40	94,053	27.65	96,005	28.58	92,708	25.56	94,642	28.44	91,623	25.91	94,312	28.64	91,930	24.33	93,555	28.59
60	89,040	21.46	93,221	23.99	91,479	23.36	93,116	24.39	88,379	21.69	92,030	24.18	88,723	21.67	92,071	24.27	89,047	20.04	91,657	24.13
65	83,918	17.62	89,647	19.84	86,939	19.45	90,537	20.01	83,085	17.92	88,428	20.06	84,102	17.72	88,637	20.12	83,144	16.28	87,626	20.13
70	76,793	14.02	84,273	15.95	80,699	15.76	85,931	15.95	76,081	14.34	84,092	15.96	77,314	14.06	83,431	16.22	74,038	12.98	83,114	16.08
75	66,097	10.89	76,063	12.40	72,543	12.25	78,194	12.28	67,486	10.84	76,775	12.25	66,447	10.95	75,477	12.66	63,026	9.81	76,019	12.35
80	52,055	8.15	63,878	9.29	57,764	9.74	67,976	8.75	54,229	7.88	69,358	8.29	52,610	8.17	63,790	9.52	47,016	7.30	65,831	8.88
85	33,660	6.23	47,051	6.72	42,953	7.24	48,625	6.23	35,453	5.73	49,996	5.53	34,993	6.03	47,392	6.95	29,181	5.23	48,191	6.21

Footnotes

1) 2014 NHS Board areas.

2) Please note that the Scotland-level life expectancy estimate shown here is for use only as a comparator for the corresponding sub-Scotland-level figures. The definitive expectancy estimate (based on national life tables) is published by the Office for National Statistics: Scotland-level life [National Statistics Online - National Life tables](#)

Note: This abridged life table is constructed from the estimated population in 2010, 2011 and 2012 and the total number of deaths registered in these years. The column headed l_x shows the numbers who would survive to the exact age of x out of 100,000 persons who, from birth, were subject to the mortality probabilities indicated by the death records for 2010-2012. Column e_x^o shows the expectation of life, that is, the average number of years of life left to persons aged exactly x who are subject to the 2010-2012 mortality probabilities from age x onwards.

Table 3: Life expectancy at birth in Scotland, 2010-2012, by Council and NHS Board area¹ and comparisons with 2000-2002 and 2005-2007 (Males)

	2010- 2012	2005- 2007	2000- 2002	2010- 2012	2005- 2007	2000- 2002	Change over 5 years (Years)	Change over 10 years (Years)	Change over 5 years (%)	Change over 10 years (%)
	Years ²	Years ²	Years ²	Rank	Rank	Rank				
Scotland	76.6	74.9	73.3	-	-	-	1.8	3.3	2.3	4.5
Council areas										
Aberdeen City	77.1	75.2	73.9	18	20	18	1.9	3.3	2.6	4.4
Aberdeenshire	78.9	77.5	76.0	5	2	2	1.4	3.0	1.8	3.9
Angus	78.3	76.1	74.7	8	9	11	2.1	3.6	2.8	4.8
Argyll & Bute	77.3	76.0	74.4	16	12	12	1.2	2.8	1.6	3.8
Clackmannanshire	77.0	74.1	73.4	20	23	23	2.9	3.6	3.9	5.0
Dumfries & Galloway	77.5	76.3	75.2	11	7	8	1.3	2.3	1.7	3.1
Dundee City	74.3	73.7	72.0	29	27	27	0.7	2.3	0.9	3.2
East Ayrshire	76.1	74.1	72.8	25	24	24	2.1	3.3	2.8	4.5
East Dunbartonshire	80.1	78.0	76.5	1	1	1	2.0	3.6	2.6	4.7
East Lothian	78.2	76.2	75.7	9	8	5	2.0	2.6	2.6	3.4
East Renfrewshire	79.9	77.5	75.7	2	3	4	2.5	4.2	3.2	5.5
Edinburgh, City of	77.4	76.0	74.4	13	13	13	1.4	3.0	1.8	4.0
Eilean Siar	76.4	73.2	72.4	24	28	25	3.1	4.0	4.3	5.5
Falkirk	76.9	74.9	73.6	22	21	21	2.0	3.3	2.7	4.5
Fife	77.0	75.8	74.3	21	16	14	1.2	2.7	1.6	3.6
Glasgow City	72.6	70.7	68.9	32	32	32	1.9	3.7	2.7	5.3
Highland	77.2	76.0	73.8	17	14	20	1.3	3.4	1.7	4.7
Inverclyde	73.7	72.6	70.6	31	30	31	1.1	3.1	1.5	4.4
Midlothian	77.6	76.0	74.1	10	11	15	1.6	3.5	2.0	4.7
Moray	77.4	76.1	74.0	14	10	16	1.3	3.3	1.7	4.5
North Ayrshire	76.0	73.8	72.3	26	25	26	2.2	3.8	3.0	5.2
North Lanarkshire	74.9	72.8	72.0	28	29	28	2.1	3.0	2.9	4.1
Orkney Islands	79.7	75.3	75.4	3	19	7	4.4	4.3	5.9	5.7
Perth & Kinross	79.5	76.8	75.9	4	5	3	2.7	3.6	3.6	4.7
Renfrewshire	75.3	73.7	71.9	27	26	29	1.5	3.3	2.0	4.6
Scottish Borders	78.7	76.7	75.4	6	6	6	2.0	3.3	2.6	4.4
Shetland Islands	77.4	75.9	75.0	12	15	10	1.5	2.4	2.0	3.2
South Ayrshire	77.3	75.7	73.9	15	17	17	1.7	3.4	2.2	4.7
South Lanarkshire	76.4	74.4	73.8	23	22	19	2.0	2.5	2.7	3.4
Stirling	78.4	76.9	75.2	7	4	9	1.5	3.2	1.9	4.3
West Dunbartonshire	74.1	72.0	70.8	30	31	30	2.2	3.3	3.0	4.7
West Lothian	77.1	75.4	73.4	19	18	22	1.7	3.7	2.3	5.0
NHS Board areas										
Ayrshire & Arran	76.5	74.5	73.0	11	11	11	2.0	3.5	2.7	4.8
Borders	78.7	76.7	75.4	2	1	1	2.0	3.3	2.6	4.4
Dumfries & Galloway	77.5	76.3	75.2	4	3	3	1.3	2.3	1.7	3.1
Fife	77.0	75.8	74.3	10	7	7	1.2	2.7	1.6	3.6
Forth Valley	77.4	75.4	74.0	7	9	9	2.0	3.3	2.6	4.5
Grampian	78.0	76.4	74.8	3	2	5	1.6	3.2	2.1	4.3
Greater Glasgow & Clyde	74.5	72.7	70.9	14	14	14	1.9	3.7	2.6	5.2
Highland	77.2	76.0	74.0	9	4	10	1.2	3.2	1.6	4.3
Lanarkshire	75.6	73.6	72.9	13	12	12	2.1	2.8	2.8	3.8
Lothian	77.5	76.0	74.4	5	5	6	1.5	3.1	2.0	4.2
Orkney	79.7	75.3	75.4	1	10	2	4.4	4.3	5.9	5.7
Shetland	77.4	75.9	75.0	6	6	4	1.5	2.4	2.0	3.2
Tayside	77.3	75.5	74.2	8	8	8	1.8	3.2	2.4	4.2
Western Isles	76.4	73.2	72.4	12	13	13	3.1	4.0	4.3	5.5

Footnotes

1) 2014 NHS Board areas.

2) The results may vary from year to year, particularly those based on small populations.

Table 4: Life expectancy at birth in Scotland, 2010-2012, by Council and NHS Board area¹ and comparisons with 2000-2002 and 2005-2007 (Females)

	2010-2012	2005-2007	2000-2002	2010-2012	2005-2007	2000-2002	Change over 5 years (Years)	Change over 10 years (Years)	Change over 5 years (%)	Change over 10 years (%)
	Years ²	Years ²	Years ²	Rank	Rank	Rank				
Scotland	80.8	79.7	78.8	-	-	-	1.1	2.0	1.4	2.6
Council areas										
Aberdeen City	81.2	80.2	79.6	16	17	15	0.9	1.6	1.2	2.0
Aberdeenshire	82.1	81.3	80.7	4	5	4	0.8	1.3	1.0	1.7
Angus	81.1	80.6	79.8	19	11	12	0.5	1.3	0.6	1.6
Argyll & Bute	81.2	80.0	79.0	15	19	18	1.2	2.2	1.5	2.8
Clackmannanshire	80.6	79.5	78.2	22	21	24	1.1	2.4	1.3	3.1
Dumfries & Galloway	81.9	80.3	79.9	7	16	11	1.6	2.0	2.1	2.5
Dundee City	79.3	79.2	77.9	29	24	27	0.0	1.4	0.1	1.8
East Ayrshire	80.2	77.9	77.5	25	31	30	2.4	2.7	3.0	3.5
East Dunbartonshire	83.4	82.4	80.5	1	3	6	1.1	2.9	1.3	3.6
East Lothian	81.5	81.0	79.9	12	7	10	0.5	1.6	0.6	2.0
East Renfrewshire	82.9	82.5	81.3	2	2	3	0.4	1.6	0.5	2.0
Edinburgh, City of	81.9	80.9	79.7	9	10	13	1.0	2.2	1.3	2.8
Eilean Siar	80.2	80.3	79.9	26	15	8	-0.1	0.3	-0.1	0.4
Falkirk	80.6	79.5	78.6	21	23	21	1.1	2.0	1.4	2.6
Fife	81.1	80.1	79.5	18	18	16	1.0	1.6	1.2	2.1
Glasgow City	78.5	77.0	76.4	32	32	32	1.5	2.2	2.0	2.9
Highland	81.9	80.6	79.2	8	12	17	1.3	2.7	1.6	3.4
Inverclyde	79.9	78.2	77.2	28	29	31	1.7	2.7	2.2	3.5
Midlothian	81.3	79.7	78.6	14	20	20	1.5	2.6	1.9	3.3
Moray	81.7	80.4	79.9	11	14	9	1.3	1.8	1.6	2.2
North Ayrshire	80.7	79.1	78.3	20	25	23	1.6	2.4	2.1	3.1
North Lanarkshire	79.1	78.4	77.6	30	28	28	0.7	1.5	0.9	1.9
Orkney Islands	81.8	81.6	81.7	10	4	1	0.2	0.1	0.2	0.2
Perth & Kinross	82.8	81.2	80.7	3	6	5	1.7	2.1	2.1	2.7
Renfrewshire	80.4	78.9	78.2	24	26	25	1.5	2.3	1.9	2.9
Scottish Borders	82.0	80.9	80.3	5	8	7	1.0	1.6	1.3	2.0
Shetland Islands	81.3	82.6	81.4	13	1	2	-1.3	-0.1	-1.6	-0.1
South Ayrshire	81.2	80.6	78.9	17	13	19	0.6	2.3	0.7	2.9
South Lanarkshire	80.5	79.5	78.4	23	22	22	1.1	2.1	1.3	2.7
Stirling	81.9	80.9	79.6	6	9	14	1.0	2.3	1.2	2.9
West Dunbartonshire	78.7	77.9	77.5	31	30	29	0.8	1.2	1.0	1.5
West Lothian	80.1	78.9	78.0	27	27	26	1.2	2.0	1.5	2.6
NHS Board areas										
Ayrshire & Arran	80.7	79.2	78.2	11	12	12	1.5	2.5	2.0	3.2
Borders	82.0	80.9	80.3	1	3	3	1.0	1.6	1.3	2.0
Dumfries & Galloway	81.9	80.3	79.9	2	9	6	1.6	2.0	2.1	2.5
Fife	81.1	80.1	79.5	8	10	7	1.0	1.6	1.2	2.1
Forth Valley	81.0	79.9	78.8	10	11	11	1.1	2.1	1.3	2.7
Grampian	81.7	80.8	80.1	5	4	4	0.9	1.5	1.1	1.9
Greater Glasgow & Clyde	79.8	78.4	77.6	13	14	14	1.4	2.3	1.8	2.9
Highland	81.7	80.4	79.2	4	5	10	1.2	2.5	1.6	3.2
Lanarkshire	79.8	78.9	78.0	14	13	13	0.9	1.8	1.1	2.3
Lothian	81.4	80.4	79.3	6	6	9	1.0	2.1	1.3	2.6
Orkney	81.8	81.6	81.7	3	2	1	0.2	0.1	0.2	0.2
Shetland	81.3	82.6	81.4	7	1	2	-1.3	-0.1	-1.6	-0.1
Tayside	81.1	80.4	79.4	9	7	8	0.7	1.7	0.9	2.1
Western Isles	80.2	80.3	79.9	12	8	5	-0.1	0.3	-0.1	0.4

Footnotes

1) 2014 NHS Board areas.

2) The results may vary from year to year, particularly those based on small populations.

Table 5: Life expectancy at age 65 in Scotland, 2010-2012, by Council and NHS Board area¹ (Males and Females)

	Males		Females	
	Years ²	Rank	Years ²	Rank
Scotland	17.2	-	19.5	-
Council areas				
Aberdeen City	17.3	19	19.8	17
Aberdeenshire	18.2	8	20.1	11
Angus	18.2	7	20.2	8
Argyll & Bute	17.6	14	20.1	10
Clackmannanshire	16.9	23	19.4	20
Dumfries & Galloway	17.9	11	20.0	15
Dundee City	16.2	28	19.1	24
East Ayrshire	17.0	22	19.1	25
East Dunbartonshire	19.2	2	21.5	1
East Lothian	18.4	6	20.0	13
East Renfrewshire	19.0	3	20.8	3
Edinburgh, City of	17.7	13	20.3	7
Eilean Siar	16.3	27	20.1	9
Falkirk	16.7	24	19.3	23
Fife	17.4	18	19.8	16
Glasgow City	14.9	32	18.3	32
Highland	17.9	12	20.4	5
Inverclyde	15.8	31	19.0	27
Midlothian	17.5	16	19.4	21
Moray	17.6	15	19.8	18
North Ayrshire	17.4	17	19.3	22
North Lanarkshire	16.0	29	18.3	30
Orkney Islands	19.4	1	20.0	14
Perth & Kinross	18.7	4	21.0	2
Renfrewshire	16.5	26	18.9	28
Scottish Borders	18.5	5	20.3	6
Shetland Islands	17.9	10	20.1	12
South Ayrshire	17.3	20	19.7	19
South Lanarkshire	16.7	25	19.1	26
Stirling	18.0	9	20.4	4
West Dunbartonshire	15.9	30	18.3	31
West Lothian	17.0	21	18.7	29
NHS Board areas				
Ayrshire & Arran	17.2	10	19.4	12
Borders	18.5	2	20.3	2
Dumfries & Galloway	17.9	4	20.0	7
Fife	17.4	9	19.8	10
Forth Valley	17.1	11	19.7	11
Grampian	17.8	6	19.9	8
Greater Glasgow & Clyde	16.1	14	19.0	13
Highland	17.8	5	20.3	1
Lanarkshire	16.4	12	18.7	14
Lothian	17.6	8	19.8	9
Orkney	19.4	1	20.0	6
Shetland	17.9	3	20.1	5
Tayside	17.7	7	20.1	4
Western Isles	16.3	13	20.1	3

Footnotes

1) 2014 NHS Board areas.

2) The results may vary from year to year, particularly those based on small populations.

10. Notes on statistical publications

National Statistics

The United Kingdom Statistics Authority (UKSA) has designated these statistics as National Statistics, in line with the Statistics and Registration Service Act 2007 and signifying compliance with the Code of Practice for Official Statistics (available on the [UKSA](#) website).

Designation can be broadly interpreted to mean that the statistics:

- meet identified user needs;
- are well explained and readily accessible;
- are produced according to sound methods; and
- are managed impartially and objectively in the public interest.

Once statistics have been designated as National Statistics it is a statutory requirement that the Code of Practice shall continue to be observed.

National Records of Scotland

We, the National Records of Scotland, are a non-ministerial department of the devolved Scottish Administration. Our aim is to provide relevant and reliable information, analysis and advice that meets the needs of government, business and the people of Scotland. We do this as follows:

- Preserving the past – We look after Scotland’s national archives so that they are available for current and future generations, and we make available important information for family history.
- Recording the present – At our network of local offices, we register births, marriages, civil partnerships, deaths, divorces and adoptions in Scotland.
- Informing the future – We are responsible for the Census of Population in Scotland which we use, with other sources of information, to produce statistics on the population and households.

You can get other detailed statistics that we have produced from the [Statistics](#) section of our website. Statistics from the 2001 Census are on [Scotland’s Census Results On-Line \(SCROL\)](#) website and the 2011 Census results are held on the [Scotland’s Census](#) website.

We also provide information about future publications on our website. If you would like us to tell you about future statistical publications, you can register your interest on the Scottish Government [ScotStat website](#).

Enquiries and suggestions

Please contact our Customer Services if you need any further information.

Email: customer@gro-scotland.gsi.gov.uk

If you have comments or suggestions that would help us improve our standards of service, please contact:

Kirsty MacLachlan
Senior Statistician
National Records of Scotland
Room 1/2/3
Ladywell House
Ladywell Road
Edinburgh
EH12 7TF

Phone: 0131 314 4242

Email: kirsty.maclachlan@gro-scotland.gsi.gov.uk

11. Related organisations

Organisation	Contact
<p>The Scottish Government (SG) forms the bulk of the devolved Scottish Administration. The aim of the statistical service in the SG is to provide relevant and reliable statistical information, analysis and advice that meets the needs of government, business and the people of Scotland.</p>	<p>Office of the Chief Statistician Scottish Government 3WR, St Andrews House Edinburgh EH1 3DG</p> <p>Phone: 0131 244 0442</p> <p>Email: statistics.enquiries@scotland.gsi.gov.uk</p> <p>Website: www.scotland.gov.uk/Topics/Statistics</p>
<p>The Office for National Statistics (ONS) is responsible for producing a wide range of economic and social statistics. It also carries out the Census of Population for England and Wales</p>	<p>Customer Contact Centre Office for National Statistics Room 1.101 Government Buildings Cardiff Road Newport NP10 8XG</p> <p>Phone: 0845 601 3034 Minicom: 01633 815044</p> <p>Email: info@statistics.gsi.gov.uk</p> <p>Website: www.ons.gov.uk/</p>
<p>The Northern Ireland Statistics and Research Agency (NISRA) is Northern Ireland's official statistics organisation. The agency is also responsible for registering births, marriages, adoptions and deaths in Northern Ireland, and the Census of Population.</p>	<p>Northern Ireland Statistics and Research Agency McAuley House 2-14 Castle Street Belfast BT1 1SA</p> <p>Phone: 028 9034 8100</p> <p>Email: info.nisra@dfpni.gov.uk</p> <p>Website: www.nisra.gov.uk</p>

© Crown Copyright. You may reproduce brief extracts from the material in this publication as long as you fully acknowledge the source.