



---

# **Life Expectancy for Areas within Scotland**

## **2011-2013**

**Including revised estimates for 2001-2003 to 2008-2010 for  
Community Health Partnerships, by Urban Rural and Scottish  
Index of Multiple Deprivation**

**Published on 16 October 2014**

---

A National Statistics publication for Scotland

National Statistics are produced to high professional standards set out in the National Statistics Code of Practice. They undergo regular quality assurance reviews to ensure that they meet customer needs.



## Contents

Main Points .....	5
1. Background .....	7
2. Background methodology.....	8
2.1 Life expectancy at birth .....	8
2.2 Accuracy of results .....	8
3. Life expectancy in Scotland, the UK and Europe .....	10
4. Life expectancy at birth, 2011-2013, geographical and other variations .....	13
4.1 Council areas .....	13
4.2 NHS Board areas .....	14
4.3 Community Health Partnership areas.....	14
4.4 Urban Rural 6-fold classification.....	15
4.5 Scottish Index of Multiple Deprivation 2012 decile .....	16
5. Life expectancy at birth, comparisons over time .....	18
5.1 Council areas .....	18
5.2 NHS Board areas .....	20
6. Life expectancy at age 65, 2011-2013, geographical variations.....	22
6.1 Council areas .....	22
6.2 NHS Board areas .....	22
7. Differences between the revised life expectancy estimates and previously published estimates.....	23
8. Further information .....	24
8.1 Life expectancy at birth .....	24
8.2 Life expectancy for areas in Scotland.....	24
8.3 Healthy Life Expectancy .....	25
8.4 Other data available from the National Records of Scotland.....	25
9. Notes and definitions.....	26
9.1 NHS Board areas .....	26
9.2 Community Health Partnerships.....	26
9.3 Urban and Rural areas .....	26
9.4 Deprivation areas .....	27
9.5 Methodology and comparisons across the UK .....	27
10. Notes on statistical publications .....	47
11. Related organisations.....	49

## List of Tables

Table 1:	Abridged life table, by sex, age and Council area, Scotland, 2011-2013.....	28
Table 2:	Abridged life table, by sex, age and NHS Board area, Scotland 2011-2013.....	32
Table 3:	Abridged life table, by sex, age and Community Health Partnership, Scotland 2011-2013.....	34
Table 4:	Abridged life table, by sex, age and 2012 Urban Rural 6-fold classification, Scotland 2011-2013.....	38
Table 5:	Abridged life table, by sex, age and SIMD2012 deprivation decile, Scotland 2011-2013.....	39
Table 6:	Life expectancy at birth in Scotland, 2011-2013, by Council and NHS Board area and comparisons with 2001-2003 and 2006-2008 (Males) .....	41
Table 7:	Life expectancy at birth in Scotland, 2011-2013, by Council and NHS Board area and comparisons with 2001-2003 and 2006-2008 (Females) .....	42
Table 8:	Life expectancy at birth in Scotland, 2011-2013, by Community Health Partnership area and comparisons with 2001-2003 and 2006-2008 (Males).....	43
Table 9:	Life expectancy at birth in Scotland, 2011-2013, by Community Health Partnership area and comparisons with 2001-2003 and 2006-2008 (Females).....	44
Table 10:	Life expectancy at age 65 in Scotland, 2011-2013, by Council and NHS Board area (Males and Females) .....	45
Table 11:	Life expectancy at age 65 in Scotland, 2011-2013, by Community Health Partnership area (Males and Females) .....	46

## List of Figures

Figure 1:	Life expectancy at birth, Scotland, 1980-1982 to 2011-2013 .....	10
Figure 2a:	Life expectancy at birth in selected countries, 1980-1982 to 2011-2013 Males .....	11
Figure 2b:	Life expectancy at birth in selected countries, 1980-1982 to 2011-2013 Females .....	11
Figure 3:	Life expectancy at birth, 95% confidence intervals for Council areas, 2011-2013 (Males and Females) .....	13
Figure 4:	Life expectancy at birth, 95% confidence intervals for NHS Board areas, 2011-2013 (Males and Females) .....	14
Figure 5:	Life expectancy at birth, 95% confidence intervals for Scottish Community Health Partnership areas, 2011-2013 (Males and Females).....	15
Figure 6:	Life expectancy at birth, 95% confidence intervals for Urban/Rural classification, 2011-2013 (Males and Females).....	16
Figure 7:	Life expectancy at birth, 95% confidence intervals for Scottish Index of Multiple Deprivation 2012 Deciles, 2011-2013 (Males and Females) .....	17
Figure 8:	Life expectancy at birth in Scotland, 1991-1993 to 2011-2013, by Council area, Males .....	18
Figure 9:	Life expectancy at birth in Scotland, 1991-1993 to 2011-2013, by Council area, Females .....	19
Figure 10:	Life expectancy at birth in Scotland, 2000-2002 to 2011-2013, by NHS Board area, Males .....	20
Figure 11:	Life expectancy at birth in Scotland, 2000-2002 to 2011-2013, by NHS Board area, Females.....	21

## Main Points

The main points in this report for 2011-2013 are:

### At birth

- Life expectancy in Scotland was 76.8 years for males and 80.9 years for females but with considerable variation between areas.
- Male and female life expectancy was highest in East Dunbartonshire Council area and lowest in Glasgow City Council area. Males in East Dunbartonshire can expect to live for 80.5 years, 7.5 years longer than in Glasgow City (73.0 years). Females in East Dunbartonshire can expect to live for 83.9 years, 5.4 years longer than in Glasgow City (78.5 years).
- The NHS Board area with the highest male life expectancy was Borders (79.3 years), with female life expectancy being highest in Orkney (82.5 years); the NHS Board area with the lowest male life expectancy was Greater Glasgow & Clyde (74.9 years), with female life expectancy also lowest in Greater Glasgow & Clyde at 80.0 years.
- The Community Health Partnership area where male and female life expectancy was highest was East Dunbartonshire at 80.5 years and 83.9 years respectively. Glasgow City had the lowest life expectancy for males (73.0 years) and females (78.5 years).
- Life expectancy at birth was highest for males in Remote Rural areas (79.2 years), where they can expect to live nearly 3.6 years longer than males in large urban areas, who have a life expectancy at birth of 75.6 years. Female life expectancy at birth was also highest in Remote Rural areas (82.6 years), 2.3 years more than in large urban areas, where it was lowest (80.3 years).
- Life expectancy increases as deprivation decreases, with life expectancy at birth for males in the 10 per cent least deprived areas of Scotland (82.4 years) being expected to live for 12.5 years more than males in the 10 per cent most deprived areas (69.9 years). Females in the 10 per cent least deprived areas of Scotland can expect to live for 84.8 years, 8.5 years longer than those in the 10 per cent most deprived areas (76.3 years).

### Compared with UK and Europe

- Scottish males and females have the lowest life expectancy at birth in the United Kingdom (UK). Male life expectancy is 2.1 years lower than the UK average and female life expectancy is 1.8 years lower.
- In Scotland, males and females can expect to live shorter lives (by 2.4 years and 2.1 years respectively) than in England, where male and female life expectancy is the highest in the UK.
- Amongst European Union (EU) countries, male life expectancy was highest in England (79.2 years), 2.4 years higher than in Scotland. Female life expectancy was highest in Spain (84.7 years), 3.8 years higher than in Scotland.
- Although male and female life expectancy continues to improve in Scotland, the gap between Scottish and English life expectancy for both males and females has widened since 1980-1982 by 0.4 years for both males and females.

## **Changes over time**

- Male and female life expectancy has continued to rise across Scotland.
- The biggest improvements in male life expectancy since 2001-2003 have been in Eilean Siar Council and Western Isles NHS Board area (5.4 years).
- The biggest improvements in female life expectancy since 2001-2003 have been in East Dunbartonshire Council area, increasing by 3.4 years and Borders NHS Board area, increasing by 2.6 years.
- The gap between male and female life expectancy at birth in Scotland has decreased from 6.2 years in 1980-1982 to 4.1 years in 2011-2013. Male life expectancy has been increasing at a faster rate than for females since 2001-2003 closing the gap over this period.

## **At age 65**

- Males in Scotland could expect to live for a further 17.3 years and females a further 19.6 years.
- East Dunbartonshire Council area had the highest male life expectancy at age 65 (19.4 years), 4.4 years higher than in Glasgow City, where it was lowest at 15.0 years. Female life expectancy at age 65 was also highest in East Dunbartonshire (21.5 years) and lowest in Glasgow City (18.2 years), a difference of 3.3 years.
- The NHS Board areas with the highest male and female life expectancy at age 65 were Orkney (18.7 years) and Shetland (20.8 years). It was lowest for males in Greater Glasgow & Clyde (16.2 years) and for females in Lanarkshire (18.7 years).
- Male and female life expectancy at age 65 is highest in East Dunbartonshire Community Health Partnership area at 19.4 years and 21.5 years respectively. Males and females in Glasgow City Community Health Partnership have the lowest life expectancy at age 65, 15.0 years and 18.2 years respectively.

## 1. Background

- 1.1 This paper summarises the National Records of Scotland's life expectancy figures for the years 2011-2013 for administrative areas within Scotland. Alongside the new 2011-2013 figures, we have also published revised life expectancy estimates for Community Health Partnerships (CHP), by Urban Rural classification and Scottish Index of Multiple Deprivation (SIMD) for the years 2001-2003 to 2008-2010. All the revisions are available in Excel workbooks on the National Records of Scotland website.
- 1.2 This paper reports on the 32 Council areas in Scotland, the new 2014 NHS Board areas in existence from 1 April 2014 and the 34 Community Health Partnership areas. Analysis of urban and rural areas, as defined by the Scottish Government's 6-fold Urban Rural classification version 2011-2012, and deprivation areas as defined by the Scottish Index of Multiple Deprivation (SIMD) 2012 is also included, along with comparisons between the estimates for 2011-2013 and those of previous three-year periods are also presented. Further information on the geographical areas and classifications used in this publication can be found in [Section 6](#).
- 1.3 The estimates for 2011-2013, given in [Table 6](#), [Table 7](#), [Table 8](#), [Table 9](#), [Table 10](#) and [Table 11](#) have been ranked for ease of presentation. For Council areas, this means that '1' is the area with the highest life expectancy and '32' the lowest. Similarly, NHS Board areas are ranked 1 to 14 and Community Health Partnerships are ranked 1 to 34.
- 1.4 Life expectancy at birth provides a useful summary measure of mortality rates actually experienced over a given period. It also provides an objective means of comparing trends in mortality, over time, between areas of a country and with other countries. This is of use in monitoring and investigating health inequality issues across Scotland and in setting public health targets, particularly when used in conjunction with the Scottish Index of Multiple Deprivation (SIMD). The Scottish Government currently has a high level purpose target to match European population growth over a 10 year period, supported by increased healthy life expectancy at birth. Healthy life expectancy is derived by combining estimates of life expectancy with survey data on self-assessed health ([Section 7.3](#)). Life expectancy is also used to inform pensions policy.

## 2. Background methodology

### 2.1 Life expectancy at birth

- 2.1.1 The figures quoted in this publication are a three year average. They are produced by aggregating deaths and population data for the three year period. Three years of data are needed to provide large enough numbers to ensure that the figures published in this report are sufficiently robust.
- 2.1.2 In a change to previous editions of this publication the life expectancy figures for Scotland and other UK national used in the commentary are derived from [National Life Tables](#) produced by the Office for National Statistics (ONS). The National Life Tables have been used because the Office for National Statistics have not published at the time of this publication equivalent estimates for the UK and the other constituent countries. Therefore the data in the text and Figure 1, Figure 2a and Figure 2b use National Life Tables estimates. However the tables and detailed Excel files which are provided with this publication use the Scotland estimates calculated on the same basis as the estimates for areas and classifications in Scotland.
- 2.1.3 The figures are all period life expectancies. Period life expectancies are calculated using age specific mortality rates for a given period. They do not make allowance for any actual or projected future changes in mortality after that period. This means that life expectancy at birth for a given time period and area is an estimate of the average number of years a new born baby would survive if he/she experienced the particular area's age specific mortality rates for that time period throughout his/her life. The figure reflects mortality among those living in the area in each period, rather than mortality among those born in each area. Life expectancy at birth is not simply the number of years a baby born in the area during the three year period is expected to live (although the term 'can expect to live' is used throughout this publication for ease of reading), both because death rates are likely to change in the future and because many of the newborns may live elsewhere for at least some part of their lives.
- 2.1.4 The abridged life tables in [Table 1](#), [Table 2](#), [Table 3](#), [Table 4](#) and [Table 5](#) are constructed from the estimated populations in 2011, 2012 and 2013 and the total number of deaths registered in these years. The column headed  $l_x$  shows the numbers who would survive to the exact age of  $x$  out of 100,000 persons who, from birth, were subject to the mortality probabilities indicated by the death records for 2010-2012. The column headed  $e_x^0$  shows the expectation of life – the average number of years of life left to persons aged exactly  $x$  who are subject to the 2011-2013 mortality probabilities from age  $x$  onwards. For example, in [Table 1](#), for Glasgow City, 75.4 per cent of the male population and 85.2 per cent of the female population could be expected to survive to age 65. In [Table 2](#), a male aged 65 in Fife NHS Board could be expected to live on average another 17.4 years, and a female aged 65 could be expected to live on average another 19.7 years.
- ### 2.2 Accuracy of results
- 2.2.1 Life expectancy is an estimate which is subject to a margin of error. The accuracy of the results can be indicated by calculating a confidence interval within which the true underlying life expectancy would be expected to lie. In this publication, confidence intervals are set at the 95 per cent level, with the true underlying life expectancy being found within its upper and lower limits with 95 per cent probability. Life expectancy for an area can usually be said to be significantly different from another area if the 95 per cent confidence intervals do



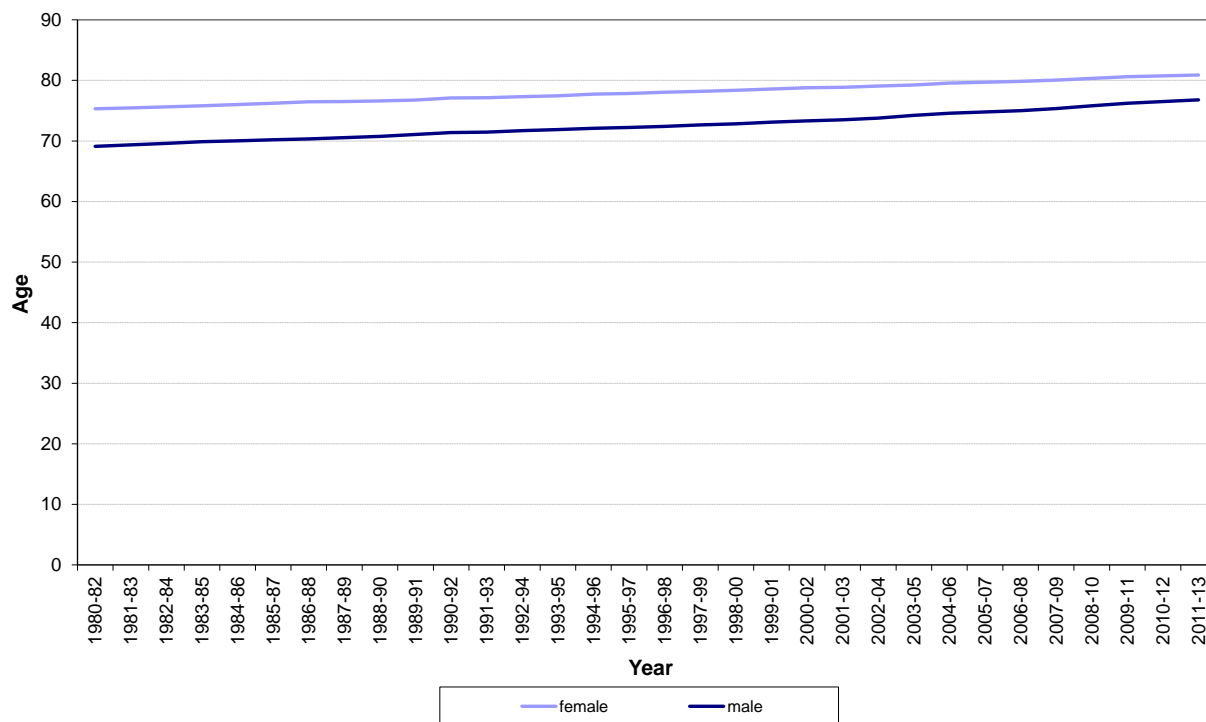
not overlap. Also, errors in the population estimates used for calculation purposes must be considered.

- 2.2.2 The 95 per cent confidence intervals for life expectancy at birth are illustrated in [Figure 3](#), [Figure 4](#), [Figure 5](#), [Figure 6](#) and [Figure 7](#) for Council, NHS Board and Community Health Partnership areas within Scotland as well as for Urban/Rural classification and Deprivation deciles.
- 2.2.3 There is no simple 'rule of thumb' for the size of confidence intervals, although it largely depends upon the size of the population: areas with small populations tend to have wider confidence intervals. It is also worth noting that life expectancy results in these areas can be affected by the random variation in the annual number of deaths. This means that estimated life expectancy can vary from year to year. For example, in [Table 6](#), [Table 7](#), [Table 8](#) and [Table 9](#), changes in rank may simply be due to random variation from year to year in the population and number of deaths (particularly in the smaller areas such as Orkney and Shetland) as opposed to a change in the long term trend life expectancy. Rankings are only significantly different if the confidence intervals do not overlap e.g. in [Figure 4](#), life expectancy at birth for females in Dumfries & Galloway is only significantly different from that of females in Ayrshire & Arran, Lanarkshire and Greater Glasgow & Clyde; all other NHS Boards have overlapping confidence intervals and therefore do not have significantly different female life expectancies.
- 2.2.4 A description of the methods used to calculate life expectancy for different geographical areas and other classifications within Scotland can be found in the [Life Expectancy for Scotland: Methodology Guide](#) on the NRS website.
- 2.2.5 More information about the methods used to calculate the standard errors and confidence intervals used in this report can be found in the Office for National Statistics publication, number 33 in the Government Statistical Service (GSS) Methodology Series. The report details the research undertaken by the Office for National Statistics (ONS) to compare methodologies for calculating life expectancy figures and confidence intervals. It can be found on the [ONS website](#).

### 3. Life expectancy in Scotland, the UK and Europe

3.1 Figure 1 shows that the expectation of life at birth in Scotland has shown constant improvement over the last 30 years. It has increased from 69.1 years for males born in the period 1980-1982 to 76.8 years for those born in 2011-2013, an increase of 7.7 years. For females, life expectancy has increased from 75.3 years for those born in the period 1980-1982 to 80.9 years for those born in 2011-2013, an increase of 5.6 years.

**Figure 1: Life expectancy at birth, Scotland<sup>1</sup>, 1980-1982 to 2011-2013**



3.2 Figure 1 also shows that the gap between male and female life expectancy at birth has decreased from 6.2 years in 1980-1982 to 4.1 years in 2011-2013. Male life expectancy has been increasing at a faster rate than for females since 2001-2003.

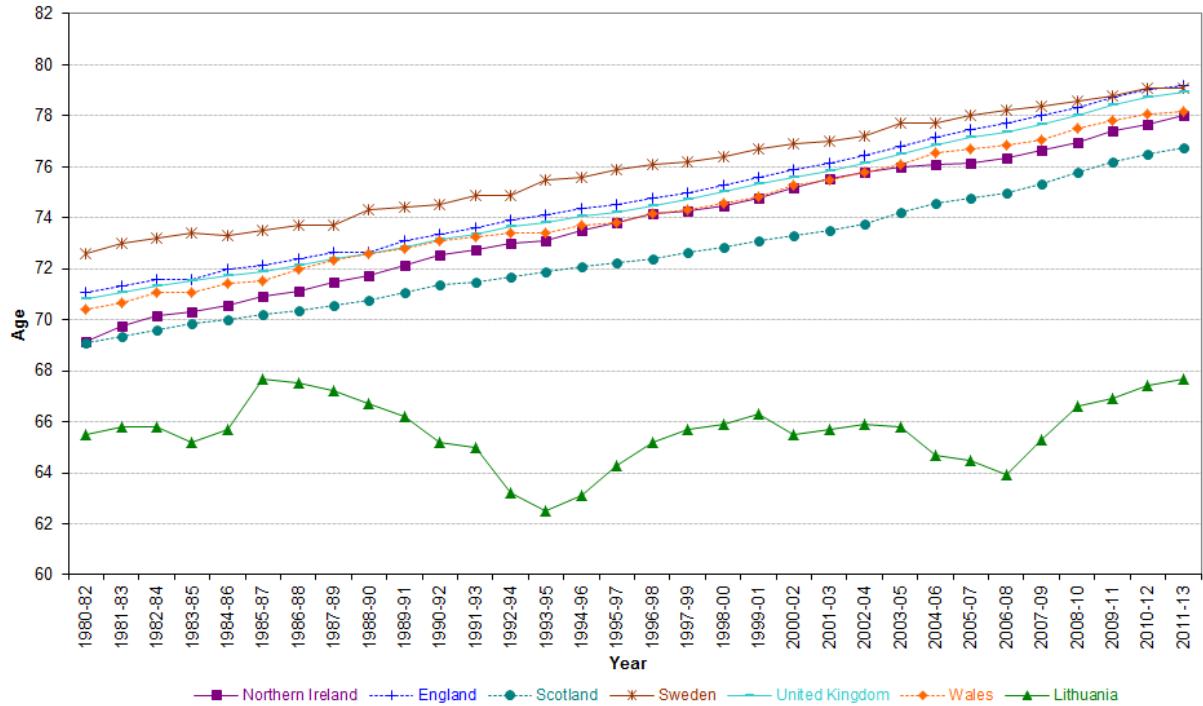
3.3 The improvement in life expectancy at birth for males and females in Scotland since 1980-1982 can be seen in [Figure 2a](#) (males) and [Figure 2b](#) (females). Comparisons are also given with life expectancy in the United Kingdom, countries within the UK and the countries that typically have the highest and lowest life expectancy in the European Union (EU) (Sweden and Lithuania for males and Spain and Romania for females).

3.4 Although male and female life expectancy continues to increase in Scotland, it is still below the UK average, which is 78.9 years for males and 82.7 years for females. The gap between UK and Scottish life expectancy is now wider than in 1980-1982, by 0.4 years for males and 0.3 for females.

#### Footnote

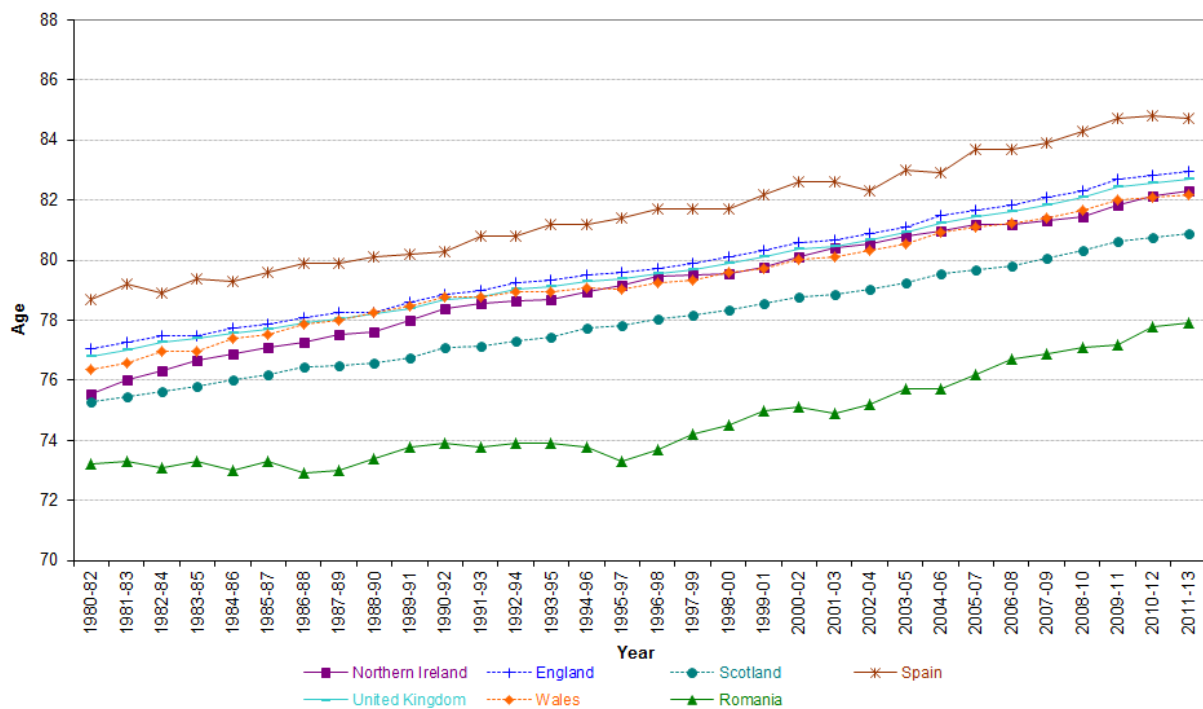
1) Life expectancy figures for Scotland and other UK constituent countries are taken from National Life Tables produced by Office for National Statistics (ONS) using complete life tables based on single years of age. All other figures in this publication are from abridged life tables based on grouped years. For more details go to [Section 7.1](#).

**Figure 2a: Life expectancy at birth in selected countries, 1980-1982 to 2011-2013 Males**



Source: EUROSTAT and Office for National Statistics

**Figure 2b: Life expectancy at birth in selected countries, 1980-1982 to 2011-2013 Females**



Source: EUROSTAT and Office for National Statistics

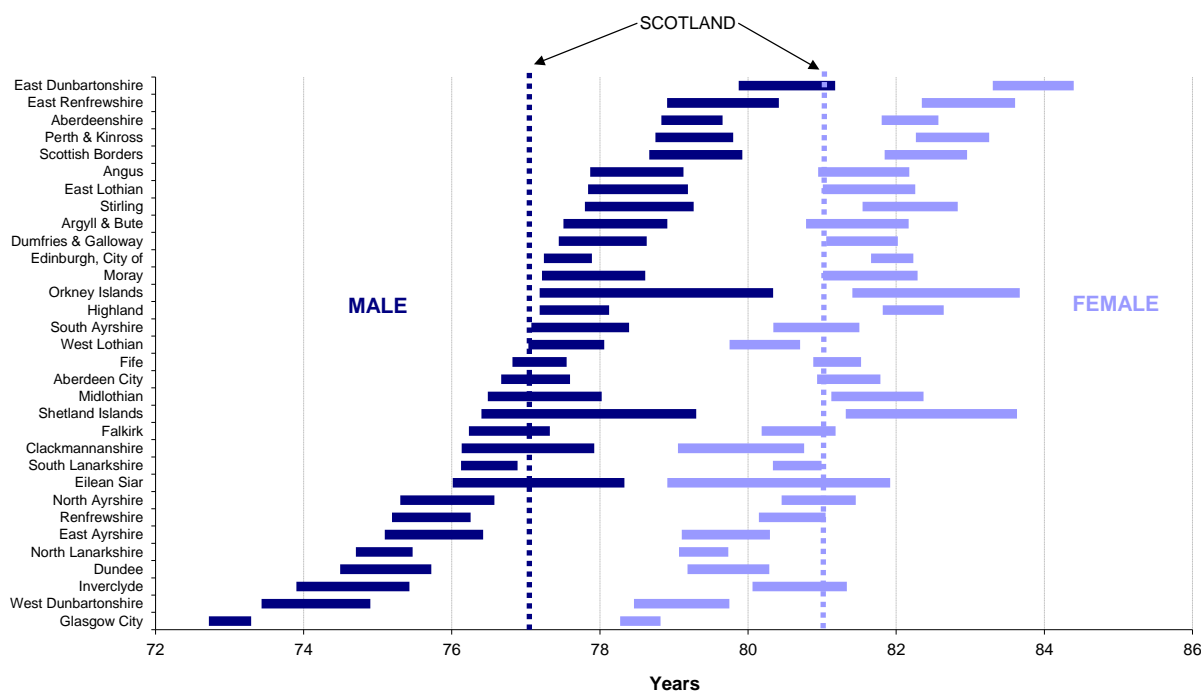
- 3.5 Life expectancy for males in Scotland has been consistently lower than that of males in England, Northern Ireland and Wales, although the gap has varied over time. Males in England, Wales and Northern Ireland can expect to live longer than those in Scotland by 2.4 years, 1.4 years and 1.2 years respectively. In comparison to 1980-1982, the gap with England has widened by 0.4 years, the gap with Wales has widened by 0.1 years and that with Northern Ireland has widened by 1.1 years.
- 3.6 The pattern is similar for female life expectancy in Scotland. Females in Scotland can expect to live 2.1 years fewer than females in England, 1.3 years fewer than females in Wales and 1.4 years fewer than females in Northern Ireland. Over time, the gap has widened by 0.4 years compared with England, by 1.2 years compared with Northern Ireland and by 0.2 years compared with Wales.
- 3.7 Male life expectancy in England at 79.2 years is the highest among the European Union's (EU's) 28 member states, 2.4 years higher than in Scotland. In Lithuania, male life expectancy is 67.7 years, the lowest in the European Union (EU) and 9.1 years lower than in Scotland. Since 1980-1982 Scotland's male life expectancy has improved, leading to widening the gap with Lithuania which has the lowest life expectancy. The gap with England has not improved and has widened since 1980-1982.
- 3.8 Spain has the highest female life expectancy in the EU at 84.7 years, 3.8 years higher than in Scotland. In Romania female life expectancy is 77.9 years, one of the lowest in the EU. Female life expectancy in Scotland has not improved as much as in Spain but has managed to surpass the improvement estimated for Romania. The gap in life expectancy between Spanish and Scottish women is 0.4 years wider in 2011-2013 than in 1980-1982 and the gap between Scottish and Romanian women is 0.9 years wider than in 1980-1982.

## 4. Life expectancy at birth, 2011-2013, geographical and other variations

### 4.1 Council areas

4.1.1 [Table 1](#) shows life expectancy at birth and at five-year intervals in Scotland and Council areas for 2011-2013. [Table 6](#) and [Table 7](#) show the life expectancy at birth and rank for Council areas, along with comparisons with five and ten years ago. In Figure 3 life expectancy at birth in 2011-2013 is shown with the associated 95 per cent confidence intervals for each of the Council areas. Life expectancy for an area can be said to be significantly different from another area if the 95 per cent confidence intervals do not overlap.

**Figure 3: Life expectancy at birth, 95% confidence intervals for Council areas, 2011-2013 (Males and Females)**



Ordered by lowest male life expectancy to highest

4.1.2 For males, the Council area with the lowest life expectancy was Glasgow City (73.0 years) and the Council area with the highest life expectancy was East Dunbartonshire (80.5 years), a difference of 7.5 years between highest and lowest.

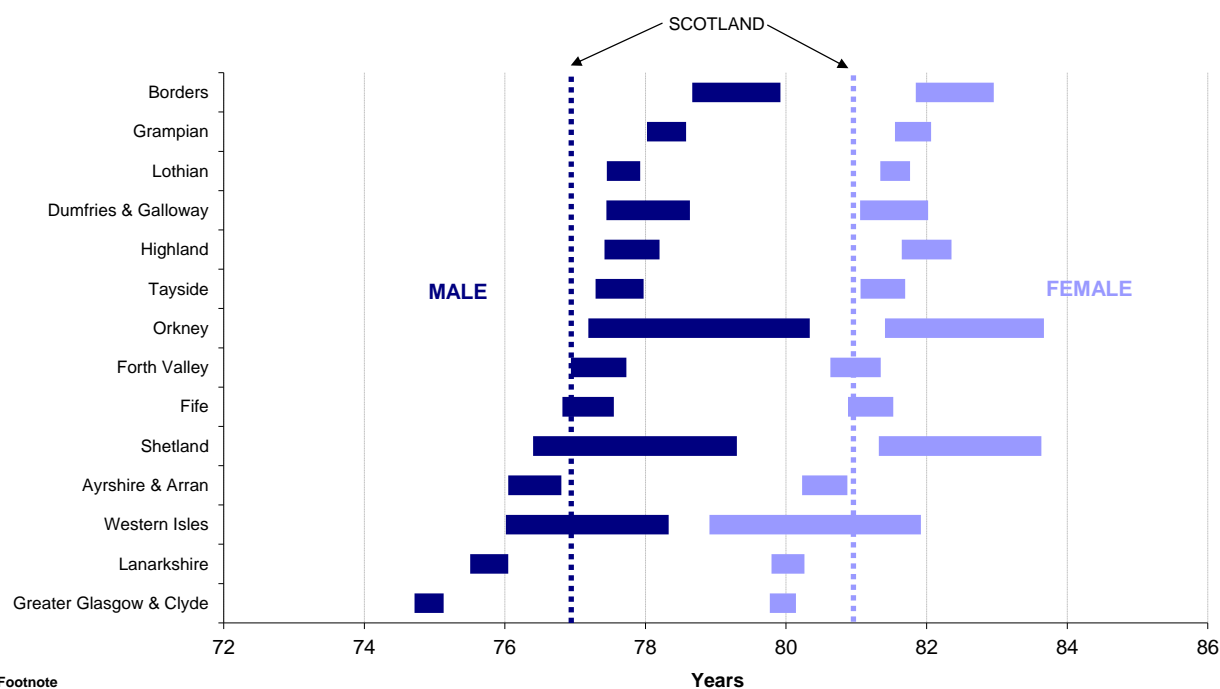
4.1.3 For females, Glasgow City had the lowest life expectancy (78.5 years) and the highest life expectancy was in East Dunbartonshire (83.9 years), a difference of 5.4 years.

4.1.4 A new interactive visualisation is available on the [Scotland's Census](#) website comparing life expectancy at birth for Council areas in Scotland.

## 4.2 NHS Board areas

4.2.1 [Table 2](#) shows life expectancy at birth and five-year intervals in Scotland and for the new NHS 2014 Board areas for 2011-2013. [Table 6](#) and [Table 7](#) show the life expectancy at birth and rank for NHS Board areas, along with comparisons with five and ten years ago. Figure 4 shows life expectancy at birth in 2011-2013, along with 95 per cent confidence intervals for each of the NHS Board areas.

**Figure 4: Life expectancy at birth, 95% confidence intervals for NHS Board areas<sup>1</sup>, 2011-2013 (Males and Females)**



**Footnote**

1. 2014 NHS Board areas

Ordered by lowest male life expectancy to highest

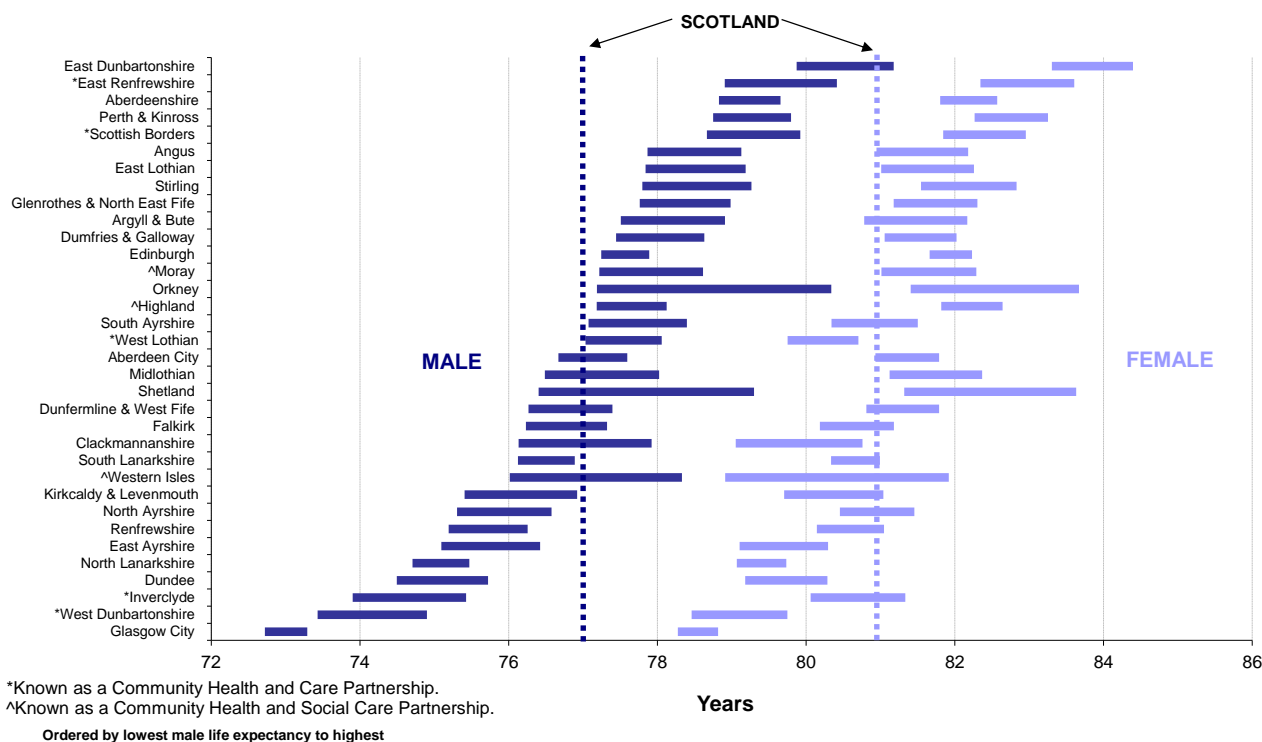
4.2.2 The NHS Board area with the highest life expectancy was Borders for males (79.3 years) and Orkney for females (82.5 years).

4.2.3 The Greater Glasgow & Clyde NHS Board area was the area with the lowest life expectancy for both males (74.9 years) and females (80.0 years), although the female figure for Greater Glasgow & Clyde is not significantly different from Lanarkshire and Western Isles NHS Board areas.

## 4.3 Community Health Partnership areas

4.3.1 [Table 3](#) shows life expectancy at birth and five-year intervals in Scotland and Community Health Partnership (CHP) areas for 2011-2013. [Table 8](#) and [Table 9](#) show the life expectancy at birth and rank for CHP areas, along with comparisons with five and ten years ago. [Figure 5](#) shows life expectancy at birth along with the 95 per cent confidence intervals for each CHP.

**Figure 5: Life expectancy at birth, 95% confidence intervals for Scottish Community Health Partnership areas, 2011-2013 (Males and Females)**



4.3.2 The CHP with the highest male life expectancy at birth was East Dunbartonshire where males could expect to live for 80.5 years. This is 7.5 years longer than in Glasgow City, where male life expectancy was lowest at 73.0 years.

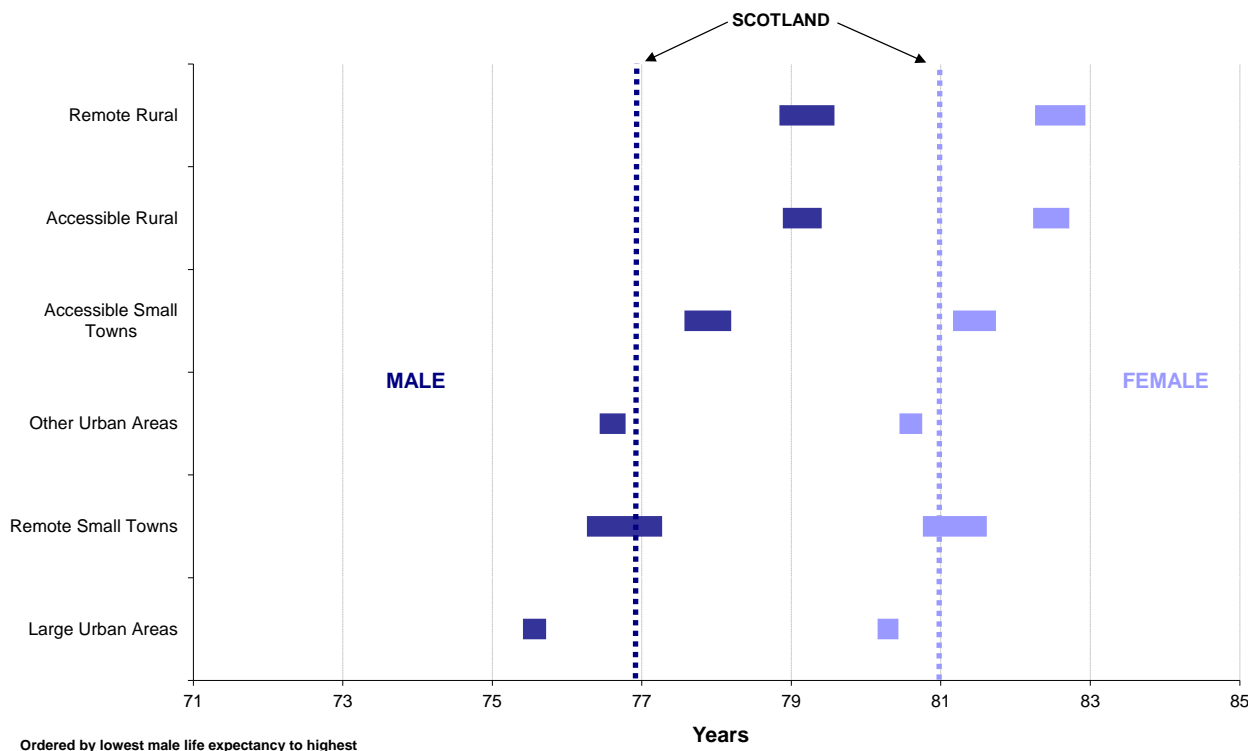
4.3.3 The CHP with the highest life expectancy at birth for females was also East Dunbartonshire, where females could expect to live for 83.9 years, 5.4 years longer than in Glasgow City, the CHP with the lowest life expectancy (78.5 years).

4.3.4 The largest gap between male and female life expectancy at birth was in Inverclyde Community Health and Care Partnership, where females (80.7 years) could expect to live 6.0 years longer than males (74.7 years).

#### 4.4 Urban Rural 6-fold classification

4.4.1 [Table 4](#) shows life expectancy at birth and five-year intervals in Scotland for each area in the 2012 Urban/Rural 6-fold classification. [Figure 6](#) shows life expectancy at birth along with 95 per cent confidence intervals for these areas.

**Figure 6: Life expectancy at birth, 95% confidence intervals for Urban/Rural classification, 2011-2013 (Males and Females)**



4.4.2 Male life expectancy at birth is highest in Remote Rural areas at 79.2 years, 3.6 years longer than in Large Urban areas, where male life expectancy is the lowest (75.6 years).

4.4.3 The gap between highest and lowest female life expectancy at birth was not as wide. It was highest in Remote Rural areas (82.6 years) and lowest in Large Urban areas (80.3 years), a gap of 2.3 years.

4.4.4 The biggest gap between male and female life expectancy is in Large Urban areas and in Remote Small Towns. In both these areas, females can expect to live at least 4.4 years longer than males.

4.4.5 Males and females in Remote Rural areas, Accessible Rural areas and Accessible Small Towns all have a higher life expectancy than the average figure for Scotland.

#### 4.5 Scottish Index of Multiple Deprivation 2012 decile

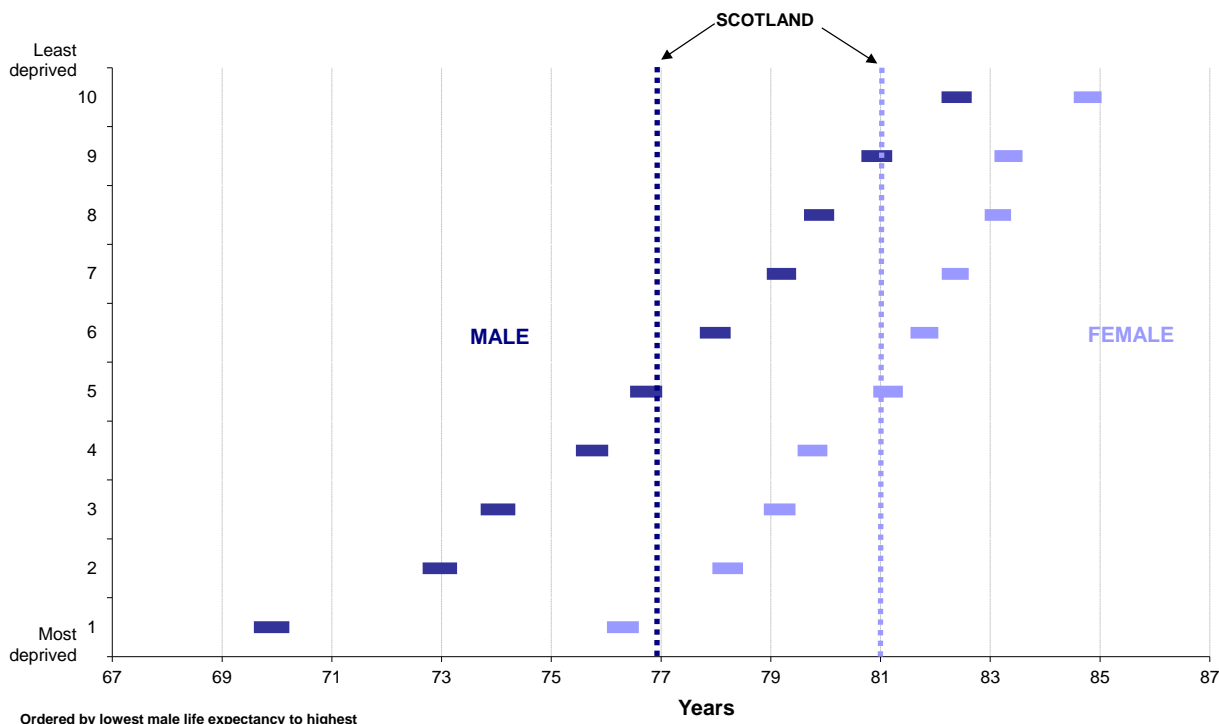
4.5.1 Life expectancy at birth and at five-year intervals for each deprivation decile<sup>2</sup> is shown in Table 5. Figure 7 shows 95 per cent confidence intervals for male and female life expectancy at birth in each decile. As explained in Section 8.4, the Scottish Index of Multiple Deprivation (SIMD) measures deprivation and not affluence, therefore the life expectancy figures presented in this publication should not be translated as 'life expectancy of the rich versus that of the poor'.

#### Footnote

2) Deciles split the data into 10 groups. Here, decile 1 has 651 most deprived data zones, decile 2 the next 650 data zones according to deprivation ranking, and so on, up to decile 10 which has the 650 least deprived data zones.



**Figure 7: Life expectancy at birth, 95% confidence intervals for Scottish Index of Multiple Deprivation 2012 Deciles, 2011-2013 (Males and Females)**



- 4.5.2 Male and female life expectancy increases as the level of deprivation decreases. Males in the 10 per cent least deprived areas of Scotland (decile 10) have a life expectancy at birth of 82.4 years, 12.5 years longer than in the 10 per cent most deprived areas, where male life expectancy is 69.9 years. Females in the 10 per cent least deprived areas can expect to live 84.8 years, 8.5 years longer than those in the 10 per cent most deprived areas, who can expect to live 76.3 years.
- 4.5.3 The gap between male and female life expectancy tends to decrease as the level of deprivation decreases. Female life expectancy is higher by 6.4 years in the 10 per cent most deprived areas and by 2.4 years in the 10 per cent least deprived areas.

## 5. Life expectancy at birth, comparisons over time

### 5.1 Council areas

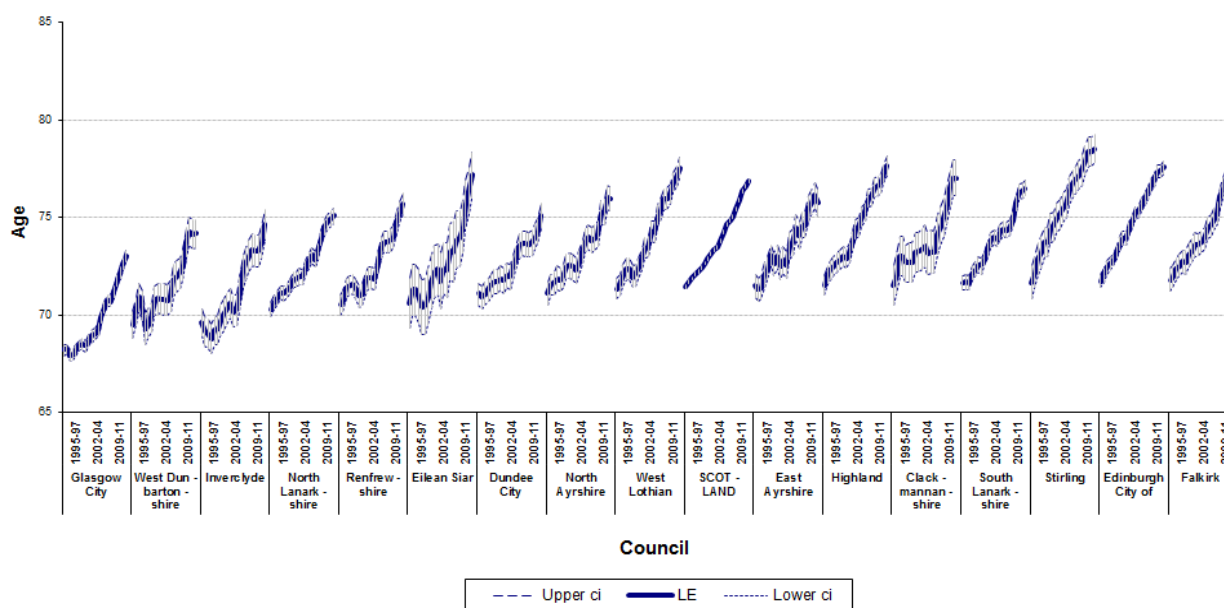
5.1.1 Figure 8 shows how male life expectancy within Council areas has changed since 1991-1993, with Council areas ordered from left to right by the lowest to highest life expectancy in 1991-1993.

5.1.2 Figure 9 shows how female life expectancy has also changed within Council areas since 1991-1993, with Council areas ordered from left to right by the lowest to highest life expectancy in 1991-1993.

5.1.3 Table 6 and Table 7 compare male and female life expectancies in 2011-2013 with those for 2001-2003 and 2006-2008 and give rankings for each area in the respective years. Comparisons made between these rankings should be treated with caution and do not imply differences in life expectancy.

5.1.4 Male life expectancy has risen in all Council areas since 2001-2003, with the biggest increase of 7.6 per cent (5.4 years) being in Eilean Siar. Female life expectancy has increased in most Council areas since 2001-2003. In Eilean Siar there was a small decrease but this was not significant (Section 2.2). East Dunbartonshire Council saw the biggest rise in female life expectancy, increasing by 4.2 per cent (3.4 years).

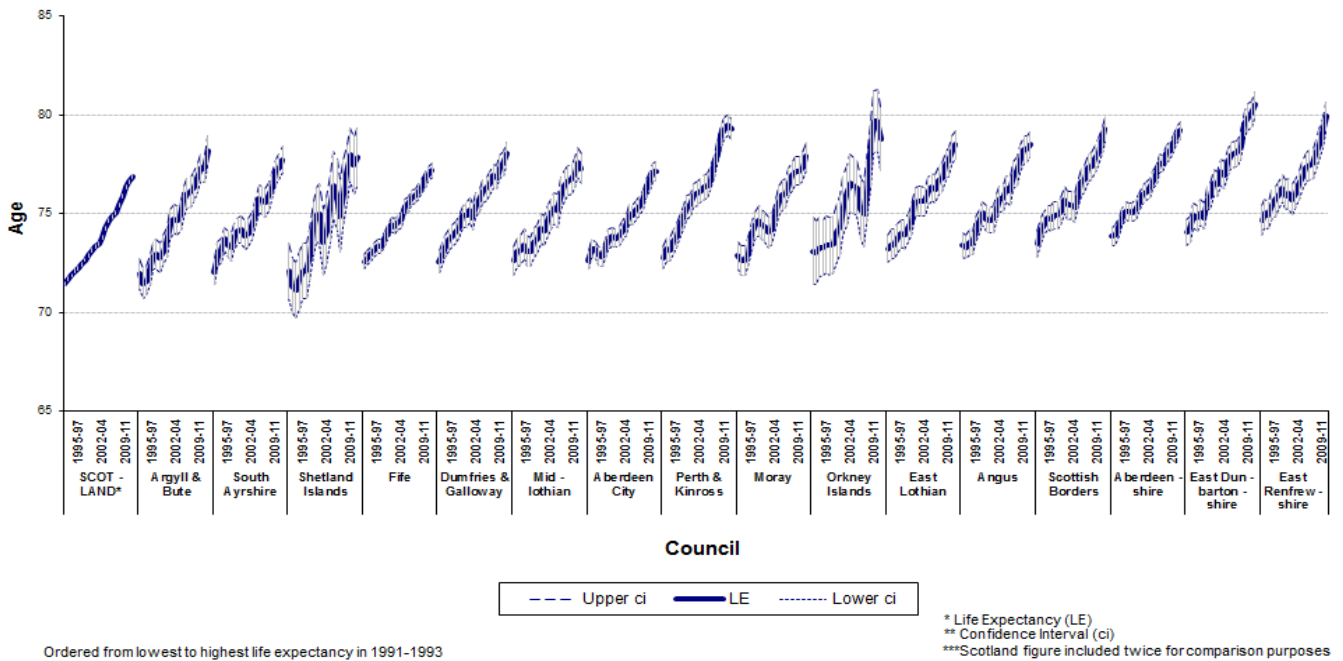
**Figure 8: Life expectancy at birth in Scotland, 1991-1993 to 2011-2013, by Council area, Males**



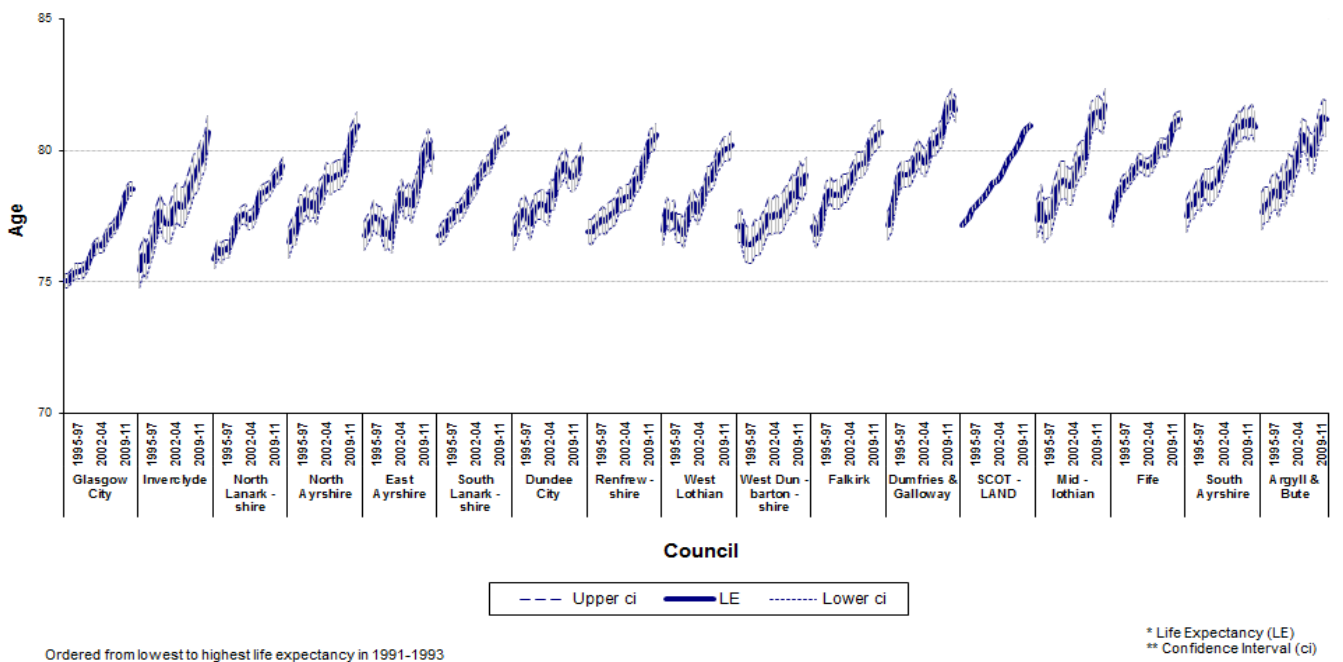
Ordered from lowest to highest life expectancy in 1991-1993

\* Life Expectancy (LE)  
\*\* Confidence Interval (ci)

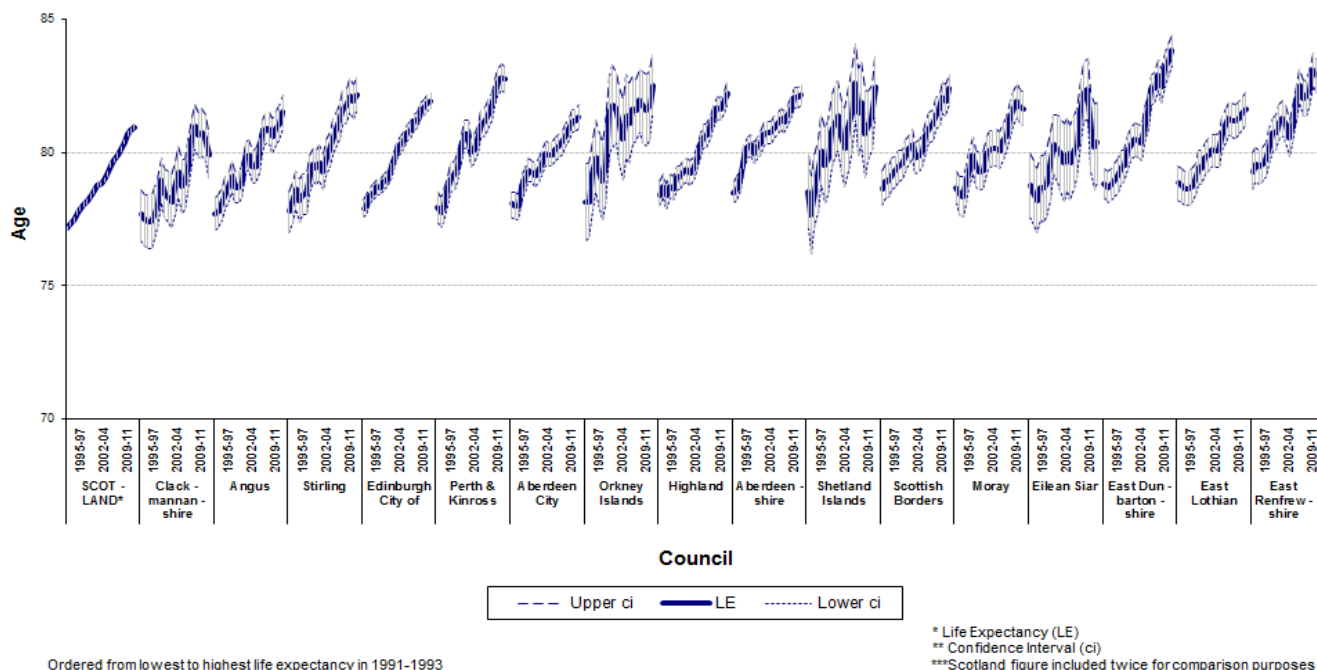
**Figure 8: Life expectancy at birth in Scotland, 1991-1993 to 2011-2013, by Council area, Males (continued)**



**Figure 9: Life expectancy at birth in Scotland, 1991-1993 to 2011-2013, by Council area, Females**



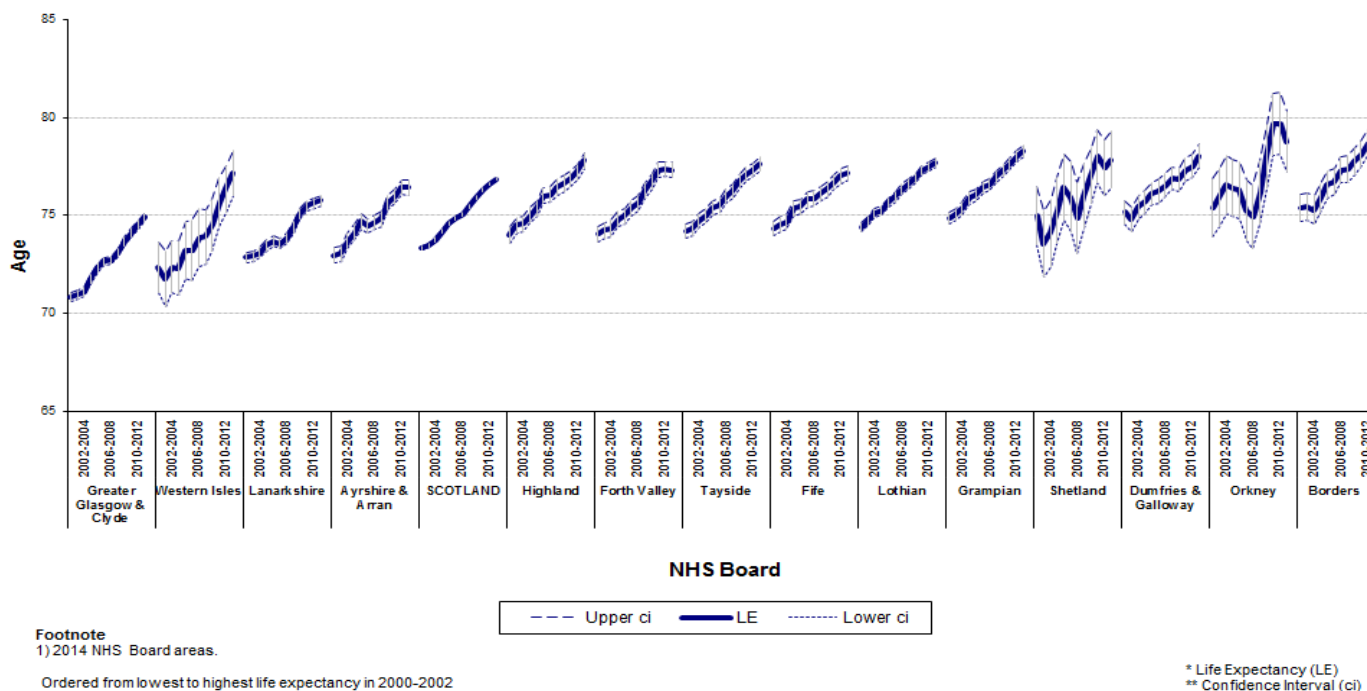
**Figure 9: Life expectancy at birth in Scotland, 1991-1993 to 2011-2013, by Council area, Females (continued)**



## 5.2 NHS Board areas

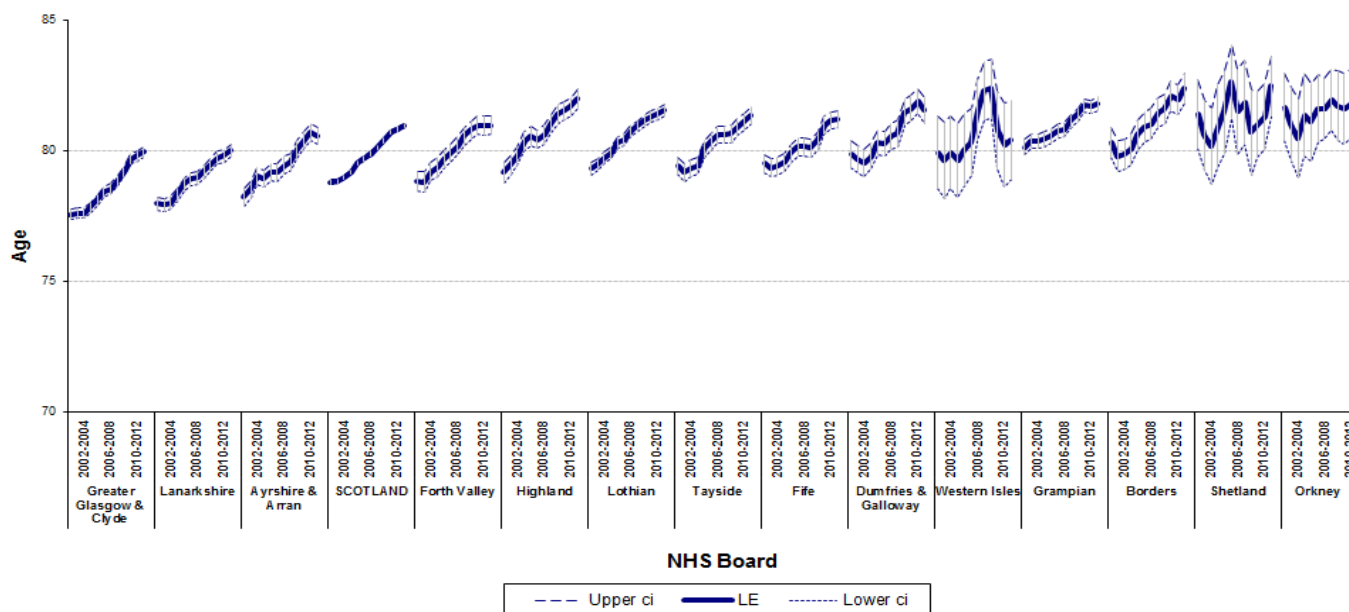
5.2.1 Figure 10 shows how male life expectancy has changed in NHS Board areas since 2000-2002 and is ordered from left to right by the lowest to highest life expectancy in 2000-2002. Figure 11 shows the same information for female life expectancy in NHS Board areas. Estimates are available from 2000-2002 because life expectancy estimates for earlier years for the new 2014 NHS Board areas are not available.

**Figure 10: Life expectancy at birth in Scotland, 2000-2002 to 2011-2013, by NHS Board area<sup>1</sup>, Males**



Footnote  
1) 2014 NHS Board areas.

**Figure 11: Life expectancy at birth in Scotland, 2000-2002 to 2011-2013, by NHS Board area<sup>1</sup>, Females**



**Footnote**  
 1) 2014 NHS Board areas.  
 Ordered from lowest to highest life expectancy in 2000-2002

\* Life Expectancy (LE)  
 \*\* Confidence Interval (ci)

- 5.2.2 [Table 6](#) and [Table 7](#) compare male and female life expectancies in 2011-2013 with those for 2001-2003 and 2006-2008 and give rankings for each area in the respective years. Comparisons made between these rankings are subject to the margin of error within the life expectancy estimates.
- 5.2.3 Male life expectancy has risen in all NHS Board areas since 2001-2003, with Western Isles showing the biggest improvement, increasing by 7.6 per cent (5.4 years). Although male life expectancy in Greater Glasgow & Clyde remained at the same ranking of 14, it was third in terms of improvement, having increased by 5.6 per cent (4.0 years) since 2001-2003.
- 5.2.4 Female life expectancy increased in all areas except in Western Isles where there was no significant change ([Section 2.2](#)). Borders NHS Board saw the biggest improvement, rising by 3.3 per cent (2.6 years).

## 6. Life expectancy at age 65, 2011-2013, geographical variations

### 6.1 Council areas

6.1.1 [Table 10](#) shows life expectancy at age 65 in Scotland for 2011-2013 for Council areas along with their respective rankings.

6.1.2 Males aged 65 in East Dunbartonshire, the Council area with the highest life expectancy at age 65 (19.4 years) could expect to live 4.4 years longer than those in Glasgow City, which had the lowest (15.0 years).

6.1.3 The gap between the Council area with the highest and lowest female life expectancy at age 65 is narrower than that for males of the same age. Females aged 65 in East Dunbartonshire could expect to live for a further 21.5 years, 3.3 years longer than those in Glasgow City, where life expectancy at age 65 is estimated to be 18.2 years.

### 6.2 NHS Board areas

6.2.1 [Table 10](#) shows life expectancy at age 65 in Scotland for 2011-2013 for 2014 NHS Board areas along with a ranking for each area.

6.2.2 Males in Orkney NHS Board area have the highest life expectancy at age 65 (18.7 years). The lowest estimate is in Greater Glasgow & Clyde, where males aged 65 can expect to live for a further 16.2 years.

6.2.3 Female life expectancy at age 65 is highest in Shetland NHS Board area (20.8 years) and lowest in Lanarkshire (18.7 years).

## **7. Differences between the revised life expectancy estimates and previously published estimates**

- 7.1 The Scottish Government Urban Rural Classification is updated every two years and the most recent update was in August 2012. More information can be found in the Urban Rural section of the Scottish Government website.
- 7.2 Community Health Partnership boundaries have been revised several times since their creation; the most recent revision occurred in October 2012. At this time the 34 CHP boundaries were re-aligned to Local Authorities boundaries. The most up-to-date CHP boundaries can be found in the [Human Health and Safety section](#) of the Scottish Government website.
- 7.3 The Scottish Index of Multiple Deprivation (SIMD) 2012 is an update with improvements on previous SIMD. Improvements to indicators and the methodology have resulted in the SIMD 2012 not being directly comparable in absolute terms with those in previous years. The most recent publication was in December 2012 and more information can be found on the [SIMD section](#) of the Scottish Government website.
- 7.4 Life expectancy estimates for 2000-2002 to 2008-2010 have been updated to use the revised population estimates for 2002 to 2010, published in December 2013, and are based on the definitions of current boundaries and areas in October 2014. As a consequence of these changes in boundaries and classifications comparisons between the revised and unrevised life expectancy estimates for 2000-2002 to 2008-2010 for these areas is difficult. However, the underlying trends and messages in the revised data are broadly consistent with those for the unrevised data for these areas and

## 8. Further information

### 8.1 Life expectancy at birth

8.1.1 The Office for National Statistics (ONS) produces national life tables for the UK and constituent countries, which provide estimates of period life expectancy. Responsibility for the production of national life expectancy figures transferred to ONS from the Government Actuary's Department (GAD) on 31 January 2006.

8.1.2 Every ten years a set of graduated (smoothed) life tables for Scotland is published for some years. They are available for the years 1930-1932 to 2000-2002 (excluding 1940-1942) and are available from the [Office for National Statistics](#) and [National Records of Scotland](#) (NRS) websites.

8.1.3 Also available on the [ONS website](#) are ungraduated national life tables (formerly called interim life tables). These are produced annually for Scotland, based on data for a period of three consecutive calendar years.

8.1.4 The life expectancy at birth figures used in the text and Figures 1, 2a and 2b in the publication for Scotland and the UK constituent countries are from the national life tables produced by ONS. The estimates for Scotland in the tables that accompany this publication are those calculated on the same basis as those for areas within Scotland and are provided for comparison purposes. A detailed description of the standard methods and notation associated with the calculation of life expectancy by ONS is available in the [Guide to Calculating National Life Tables](#) section of their website.

8.1.5 Period life expectancies are worked out using the age-specific mortality rates for a given period (either a single year, or aggregated years) which make no allowance for any later actual or projected changes in future mortality. Cohort life expectancies are worked out using age-specific mortality rates which allow for known or projected changes in mortality in later years. Period and cohort life expectancies based on projected mortality rates from the 2012-based national population projections can be accessed from the [ONS website](#).

8.1.6 ONS published Scotland-level ungraduated national life tables for 2011-2013 on 25 September 2014. These figures are also available in the Life Expectancy pages of the NRS website, within the '[Life Expectancy at Scotland Level](#)' section.

8.1.7 Life expectancy figures used for international comparisons are taken from Table tps00025 of the [Eurostat](#) website. Further information on [mortality and life expectancy](#) can also be found on the Eurostat website.

### 8.2 Life expectancy for areas in Scotland

8.2.1 Previous NRS publications dedicated to life expectancy in administrative areas (Council and NHS Board) and special areas (Community Health Partnership, Urban/Rural and Deprivation) within Scotland can be found in the [Life Expectancy in Scottish Areas](#) (archives section) of the NRS website.

8.2.2 Earlier life expectancy tables for Scottish Council and NHS Board areas, back to 1981-1983 (in the form of abridged life tables) are available in the [Life Expectancy in Scottish Areas](#) (archive section) of the NRS website.

8.2.3 All the tables for the revised life expectancy in administrative areas at Community Health Partnership, Scottish Index or Multiple Deprivation and Rural Urban classification from 2001-2003 to 2008-2010 can be found in the [Life Expectancy in Scottish Areas](#) section of the NRS website.



### 8.3 Healthy Life Expectancy

Healthy Life Expectancy (HLE) is defined as the number of years people can expect to live in good health. The difference between life expectancy and HLE indicates the length of time people can expect to spend in poor health. Information on HLE in Scotland was first published in 2004 by the Information Services Division (ISD) of the NHS in Scotland. Up to date information on the topic can be found on the Scottish Public Health Observatory ([ScotPHO](#)) website.

### 8.4 Other data available from the National Records of Scotland

Estimates of the resident population of Scotland are prepared by NRS each year. These are available by sex and single year of age for Council and NHS Board areas, together with historical data. Information is also available on a wide range of related topics such as small area population estimates, population projections, migration estimates and data from the 2001 and earlier censuses. For further information please go to the [National Records of Scotland](#) website.

or contact

Statistics Customer Services  
National Records of Scotland  
Ladywell House  
Edinburgh  
EH12 7TF  
Telephone: 0131 314 4299  
Fax: 0131 314 4696  
Email: [customer@gro-scotland.gsi.gov.uk](mailto:customer@gro-scotland.gsi.gov.uk)

## 9. Notes and definitions

### 9.1 NHS Board areas

The composition of the NHS Board areas in terms of council areas is summarised in the table below. From 1 April 2014 the boundaries of NHS Board areas were aligned with Council areas. The tables presented in this publication show information for the new NHS Board areas.

<b>NHS Board area</b>	<b>Council area</b>
<b>Ayrshire &amp; Arran</b>	East Ayrshire, North Ayrshire, South Ayrshire
<b>Borders</b>	Scottish Borders
<b>Dumfries &amp; Galloway</b>	Dumfries & Galloway
<b>Fife</b>	Fife
<b>Forth Valley</b>	Clackmannanshire, Falkirk, Stirling
<b>Grampian</b>	Aberdeen City, Aberdeenshire, Moray
<b>Greater Glasgow &amp; Clyde</b>	East Dunbartonshire, East Renfrewshire, Glasgow City, Inverclyde, Renfrewshire, West Dunbartonshire
<b>Highland</b>	Argyll & Bute, Highland
<b>Lanarkshire</b>	North Lanarkshire, South Lanarkshire
<b>Lothian</b>	East Lothian, City of Edinburgh, Midlothian, West Lothian
<b>Orkney</b>	Orkney Islands
<b>Shetland</b>	Shetland Islands
<b>Tayside</b>	Angus, Dundee City, Perth & Kinross
<b>Western Isles</b>	Eilean Siar

Life expectancy estimates for the old NHS Board areas are also available on the National Records of Scotland (NRS) website. From 2011-2013 only estimates for the new boundaries are published.

### 9.2 Community Health Partnerships

There are 34 Community Health Partnership (CHP) organisations in Scotland. CHPs are responsible for managing community health services and have developed existing links between community and hospital-based health services and local authority services such as social work, housing, leisure and education. Their principal aim is to improve the long-term health and wellbeing of communities and enhance the quality of health and social care services. In some areas the Partnerships are responsible for many local social care services and are therefore called Community Health and Care Partnerships (CHCPs) or Community Health and Social Care Partnerships (CHSCPs) and are run jointly by the NHS with local Council partners. For ease of reading they are referred to as CHPs throughout the publication.

### 9.3 Urban and Rural areas

The urban-rural split used in this publication is the Scottish Government's 6-fold Urban Rural Classification version 2011-2012. The differences with the previous classifications stem from changes to either settlement populations or settlement boundaries. The definitions of urban and rural areas underlying the classification are unchanged. For more information can be found in 2011-2012 Urban Rural Classification publication held on the [Scottish Government](#) website.

The 6-fold classification distinguishes between urban, rural and remote areas within Scotland. It is consistent with the Government's definition of rurality and includes the following categories:

1) Large Urban	Settlements of over 125,000 people.
2) Other Urban	Settlements of 10,000 to 125,000 people.
3) Accessible Small Towns	Settlements of between 3,000 and 10,000 people and within 30 minute drive of a settlement of 10,000 or more.
4) Remote Small Towns	Settlements of between 3,000 and 10,000 people and with a drive time of over 30 minutes to a settlement of 10,000 or more.
5) Accessible Rural	Settlements of less than 3,000 people and within 30 minute drive of a settlement of 10,000 or more.
6) Remote Rural	Settlements of less than 3,000 people and with a drive time of over 30 minutes to a settlement of 10,000 or more.

#### 9.4 Deprivation areas

Deprivation areas are based on the Scottish Index of Multiple Deprivation (SIMD) 2012 developed by the Scottish Government. Further information can be found on the [Scottish Government](#) website. The SIMD ranks the 6,505 Scottish data zones (areas of compact shape and similar social characteristics with populations of around 795 people) from 1 (most deprived) to 6,505 (least deprived). Life expectancy figures for deprivation areas have been presented for deciles only in this publication, although the SIMD rank can also be split into vigintiles and quintiles. Deciles are groups which contain one tenth (approximately 651) of Scotland's 6505 data zones, where decile 1 contains the 10 per cent most deprived data zones and decile 10 contains the 10 per cent least deprived. The SIMD measures deprivation and not affluence and life expectancy figures presented by deprivation area in this publication should not be translated as 'life expectancy of the rich versus that of the poor' but instead should be viewed in terms of 'differences in life expectancy in relation to the amount of concentrated deprivation'. It should also be noted that not all people living in deprived areas are deprived and not all deprived people live in deprived areas.

#### 9.5 Methodology and comparisons across the UK

The National Records of Scotland (NRS) website has a guide that describes the [methodology](#) used to produce the life expectancy statistics for Scotland. This methodology is similar to that used to produce life expectancy estimates in other UK constituent countries.

**Table 1: Abridged life table, by sex, age and Council area, Scotland, 2011-2013**

Age x	Scotland <sup>1</sup>				Aberdeen City				Aberdeenshire				Angus				Argyll & Bute			
	Males		Females		Males		Females		Males		Females		Males		Females		Males		Females	
	$l_x$	$e_x^o$	$l_x$	$e_x^o$	$l_x$	$e_x^o$	$l_x$	$e_x^o$	$l_x$	$e_x^o$	$l_x$	$e_x^o$	$l_x$	$e_x^o$	$l_x$	$e_x^o$	$l_x$	$e_x^o$	$l_x$	$e_x^o$
0	100,000	76.88	100,000	80.97	100,000	77.13	100,000	81.36	100,000	79.24	100,000	82.19	100,000	78.50	100,000	81.56	100,000	78.21	100,000	81.48
1	99,591	76.19	99,685	80.22	99,575	76.46	99,631	80.66	99,750	78.44	99,711	81.42	99,711	77.72	99,423	81.03	99,831	77.34	99,741	80.69
5	99,525	72.24	99,623	76.27	99,493	72.52	99,602	76.68	99,729	74.46	99,645	77.48	99,655	73.77	99,368	77.08	99,831	73.34	99,581	76.81
10	99,472	67.28	99,589	71.30	99,459	67.55	99,567	71.71	99,597	69.55	99,622	72.49	99,655	68.77	99,368	72.08	99,831	68.34	99,421	71.93
15	99,416	62.31	99,553	66.32	99,355	62.61	99,530	66.73	99,532	64.60	99,575	67.53	99,606	63.80	99,316	67.11	99,831	63.34	99,346	66.98
20	99,204	57.44	99,429	61.40	99,071	57.79	99,405	61.82	99,323	59.73	99,440	62.62	99,375	58.94	98,975	62.34	99,771	58.38	99,001	62.21
25	98,869	52.63	99,299	56.48	99,028	52.81	99,350	56.85	98,970	54.93	99,306	57.70	99,015	54.15	98,803	57.44	99,513	53.52	98,747	57.36
30	98,355	47.89	99,078	51.60	98,627	48.01	99,197	51.93	98,553	50.15	99,112	52.81	98,411	49.47	98,553	52.59	99,076	48.75	98,579	52.46
35	97,620	43.23	98,770	46.75	98,094	43.26	98,888	47.09	97,861	45.49	98,896	47.92	97,420	44.94	98,217	47.75	97,833	44.33	98,411	47.54
40	96,677	38.63	98,292	41.97	97,376	38.56	98,579	42.23	97,104	40.83	98,409	43.14	96,900	40.17	97,738	42.97	96,842	39.76	98,056	42.70
45	95,437	34.10	97,628	37.23	96,303	33.96	97,879	37.51	96,452	36.08	97,944	38.33	95,625	35.67	96,810	38.36	95,749	35.19	97,688	37.86
50	93,888	29.62	96,619	32.60	94,828	29.45	96,709	32.93	95,554	31.40	97,223	33.60	94,377	31.11	95,986	33.67	94,459	30.63	96,668	33.23
55	91,695	25.27	94,987	28.11	92,466	25.14	95,352	28.37	94,214	26.81	95,941	29.01	92,997	26.54	94,767	29.07	92,506	26.23	94,802	28.83
60	88,241	21.16	92,643	23.76	88,854	21.06	93,257	23.95	91,531	22.52	94,102	24.53	90,324	22.25	92,824	24.63	89,200	22.11	92,528	24.48
65	83,211	17.29	89,093	19.61	83,283	17.30	89,318	19.89	88,022	18.32	91,416	20.18	86,305	18.17	90,039	20.31	85,274	18.01	89,306	20.27
70	75,815	13.73	83,720	15.71	75,870	13.75	84,129	15.97	82,118	14.46	86,648	16.15	80,039	14.39	85,316	16.30	78,074	14.44	84,329	16.32
75	64,755	10.65	75,241	12.20	64,308	10.77	76,436	12.32	72,459	11.05	78,863	12.50	70,273	11.05	78,215	12.55	68,447	11.12	76,879	12.66
80	50,469	7.95	62,832	9.11	49,992	8.14	64,017	9.23	58,280	8.13	66,560	9.35	55,780	8.27	65,765	9.45	56,117	8.01	65,127	9.50
85	32,900	5.87	45,689	6.59	32,468	6.19	46,411	6.78	37,681	6.21	49,475	6.71	38,074	5.95	48,791	6.87	37,749	5.70	49,527	6.70

**Table 1 (continued)**

Age x	Clackmannanshire				Dumfries and Galloway				Dundee City				East Ayrshire				East Dunbartonshire			
	Males		Females		Males		Females		Males		Females		Males		Females		Males		Females	
	$l_x$	$e_x^o$	$l_x$	$e_x^o$	$l_x$	$e_x^o$	$l_x$	$e_x^o$	$l_x$	$e_x^o$	$l_x$	$e_x^o$	$l_x$	$e_x^o$	$l_x$	$e_x^o$	$l_x$	$e_x^o$	$l_x$	$e_x^o$
0	100,000	77.03	100,000	79.91	100,000	78.04	100,000	81.54	100,000	75.11	100,000	79.73	100,000	75.76	100,000	79.70	100,000	80.52	100,000	83.85
1	99,788	76.19	99,773	79.09	99,635	77.32	99,760	80.74	99,395	74.57	99,603	79.05	99,443	75.18	99,306	79.26	99,796	79.69	100,000	82.85
5	99,788	72.19	99,773	75.09	99,506	73.42	99,715	76.77	99,315	70.62	99,560	75.09	99,395	71.22	99,257	75.29	99,735	75.74	99,934	78.90
10	99,788	67.19	99,773	70.09	99,463	68.45	99,715	71.77	99,268	65.66	99,463	70.16	99,295	66.29	99,205	70.33	99,735	70.74	99,934	73.90
15	99,788	62.19	99,656	65.17	99,422	63.48	99,671	66.80	99,131	60.74	99,463	65.16	99,003	61.47	99,105	65.40	99,632	65.81	99,823	68.98
20	99,685	57.25	99,656	60.17	99,053	58.71	99,438	61.95	98,962	55.84	99,366	60.22	98,580	56.73	99,014	60.46	99,586	60.84	99,771	64.02
25	99,459	52.38	99,537	55.24	98,324	54.12	99,306	57.03	98,685	50.99	99,225	55.30	98,230	51.92	98,881	55.54	99,385	55.95	99,656	59.09
30	99,231	47.49	98,850	50.60	97,700	49.45	99,085	52.15	98,090	46.29	98,812	50.52	97,424	47.33	98,516	50.73	98,915	51.21	99,499	54.18
35	98,346	42.90	98,742	45.65	96,810	44.88	98,815	47.29	97,028	41.77	98,303	45.77	96,638	42.69	98,147	45.91	98,150	46.59	99,294	49.29
40	96,895	38.50	98,231	40.88	95,826	40.32	98,354	42.50	95,329	37.47	97,652	41.06	95,769	38.06	97,581	41.17	97,574	41.85	98,959	44.44
45	95,470	34.04	97,429	36.19	95,000	35.65	97,800	37.72	93,562	33.13	96,758	36.41	94,135	33.68	97,047	36.38	97,066	37.05	98,633	39.58
50	93,958	29.55	96,082	31.67	94,258	30.91	96,766	33.10	91,530	28.81	95,327	31.92	92,429	29.25	95,955	31.77	96,014	32.43	98,023	34.81
55	91,861	25.16	94,225	27.24	92,201	26.54	95,373	28.55	89,137	24.51	93,193	27.60	90,099	24.94	94,171	27.32	94,578	27.89	96,649	30.27
60	89,106	20.87	91,703	22.92	89,469	22.28	93,480	24.07	85,602	20.42	90,766	23.27	86,606	20.85	92,220	22.84	92,367	23.49	94,982	25.76
65	84,672	16.83	87,051	19.01	85,537	18.19	89,877	19.94	80,294	16.61	86,637	19.26	81,229	17.06	88,164	18.78	88,751	19.35	92,148	21.48
70	75,073	13.66	82,495	14.93	79,495	14.38	85,013	15.94	72,480	13.13	80,528	15.53	73,807	13.53	82,612	14.87	82,477	15.63	87,633	17.45
75	65,041	10.38	72,602	11.62	69,719	11.04	76,596	12.41	59,492	10.45	70,501	12.38	63,203	10.38	73,020	11.50	73,749	12.19	79,841	13.91
80	51,005	7.55	59,006	8.72	55,762	8.18	65,620	9.07	45,007	8.00	58,400	9.43	48,320	7.80	58,504	8.73	61,588	9.10	69,368	10.63
85	30,678	5.89	40,975	6.46	37,540	5.94	47,678	6.55	29,602	5.87	42,495	7.02	31,061	5.75	41,276	6.34	41,743	7.24	52,573	8.23

**Table 1: Abridged life table, by sex, age and Council area, Scotland, 2011-2013 (continued)**

Age x	East Lothian				East Renfrewshire				Edinburgh, City of				Eilean Siar				Falkirk			
	Males		Females		Males		Females		Males		Females		Males		Females		Males		Females	
	$l_x$	$e_x^o$	$l_x$	$e_x^o$	$l_x$	$e_x^o$	$l_x$	$e_x^o$	$l_x$	$e_x^o$	$l_x$	$e_x^o$	$l_x$	$e_x^o$	$l_x$	$e_x^o$	$l_x$	$e_x^o$	$l_x$	$e_x^o$
0	100,000	78.51	100,000	81.63	100,000	79.66	100,000	82.98	100,000	77.57	100,000	81.95	100,000	77.17	100,000	80.42	100,000	76.78	100,000	80.68
1	99,768	77.70	99,585	80.97	99,713	78.89	99,618	82.29	99,483	76.97	99,712	81.18	100,000	76.17	98,540	80.61	99,526	76.14	99,689	79.93
5	99,660	73.78	99,530	77.02	99,650	74.94	99,618	78.29	99,446	73.00	99,699	77.19	100,000	72.17	98,540	76.61	99,421	72.22	99,618	75.99
10	99,660	68.78	99,530	72.02	99,533	70.02	99,618	73.29	99,402	68.03	99,683	72.20	100,000	67.17	98,540	71.61	99,384	67.25	99,424	71.13
15	99,602	63.82	99,471	67.06	99,533	65.02	99,505	68.37	99,355	63.06	99,667	67.22	100,000	62.17	98,540	66.61	99,308	62.30	99,384	66.16
20	99,497	58.88	99,206	62.23	99,376	60.12	99,505	63.37	99,183	58.17	99,592	62.26	99,787	57.30	98,540	61.61	99,071	57.44	99,271	61.23
25	99,124	54.09	99,037	57.33	99,195	55.23	99,440	58.41	98,954	53.29	99,486	57.33	99,294	52.57	98,239	56.79	98,741	52.62	99,120	56.32
30	98,567	49.38	98,778	52.48	98,022	50.86	99,263	53.51	98,682	48.43	99,353	52.40	99,294	47.57	97,706	52.08	98,255	47.87	98,910	51.44
35	98,020	44.65	98,416	47.66	97,672	46.03	99,112	48.59	98,091	43.71	99,125	47.52	98,041	43.15	97,015	47.44	97,579	43.19	98,684	46.55
40	97,032	40.08	98,209	42.76	97,058	41.31	98,627	43.82	97,235	39.07	98,757	42.68	97,828	38.24	96,607	42.63	96,667	38.57	98,292	41.72
45	96,242	35.38	97,577	38.02	96,373	36.58	97,996	39.08	96,119	34.50	98,092	37.96	97,027	33.53	96,276	37.76	95,499	34.01	97,775	36.93
50	94,813	30.88	96,471	33.42	95,389	31.93	97,391	34.31	94,755	29.96	97,041	33.34	94,869	29.24	95,507	33.05	94,337	29.40	96,682	32.32
55	93,010	26.43	94,945	28.92	93,907	27.40	96,264	29.68	92,301	25.69	95,443	28.86	91,804	25.13	93,468	28.71	92,639	24.89	94,983	27.85
60	90,339	22.14	93,309	24.38	91,830	22.96	94,342	25.24	88,585	21.66	93,197	24.49	88,766	20.90	91,570	24.26	89,235	20.75	92,442	23.55
65	85,540	18.24	90,207	20.14	87,592	18.95	91,442	20.96	83,399	17.85	89,946	20.29	83,495	17.07	88,790	19.94	84,340	16.80	89,121	19.34
70	79,442	14.45	85,360	16.14	82,212	15.03	88,050	16.67	76,332	14.27	85,136	16.29	74,991	13.72	84,018	15.93	76,437	13.28	83,673	15.43
75	69,742	11.11	77,984	12.43	72,621	11.68	79,498	13.19	65,806	11.16	77,407	12.67	65,040	10.43	77,086	12.14	64,226	10.33	75,213	11.89
80	56,651	8.10	65,640	9.29	58,210	8.96	68,888	9.84	53,168	8.22	65,787	9.47	49,880	7.85	66,073	8.74	49,106	7.75	62,671	8.76
85	36,901	6.09	49,906	6.44	39,824	6.94	52,886	7.06	35,105	6.16	49,871	6.69	31,940	5.85	49,410	5.85	30,356	5.99	44,281	6.37

**Table 1 (continued)**

Age x	Fife				Glasgow City				Highland				Inverclyde				Midlothian			
	Males		Females		Males		Females		Males		Females		Males		Females		Males		Females	
	$l_x$	$e_x^o$	$l_x$	$e_x^o$	$l_x$	$e_x^o$	$l_x$	$e_x^o$	$l_x$	$e_x^o$	$l_x$	$e_x^o$	$l_x$	$e_x^o$	$l_x$	$e_x^o$	$l_x$	$e_x^o$	$l_x$	$e_x^o$
0	100,000	77.19	100,000	81.20	100,000	73.01	100,000	78.55	100,000	77.65	100,000	82.23	100,000	74.66	100,000	80.70	100,000	77.25	100,000	81.75
1	99,436	76.62	99,596	80.53	99,499	72.37	99,649	77.82	99,671	76.91	99,577	81.58	99,920	73.72	100,000	79.70	99,475	76.66	99,807	80.90
5	99,390	72.66	99,514	76.60	99,400	68.44	99,558	73.89	99,569	72.99	99,522	77.62	99,767	69.83	100,000	75.70	99,475	72.66	99,740	76.96
10	99,341	67.69	99,514	71.60	99,365	63.47	99,510	68.93	99,440	68.08	99,441	72.68	99,689	64.89	100,000	70.70	99,274	67.80	99,670	72.01
15	99,308	62.71	99,514	66.60	99,296	58.51	99,486	63.94	99,440	63.08	99,415	67.70	99,689	59.89	100,000	65.70	99,207	62.85	99,670	67.01
20	99,073	57.86	99,411	61.66	99,149	53.59	99,392	59.00	99,178	58.24	99,312	62.77	99,355	55.08	100,000	60.70	98,890	58.04	99,535	62.10
25	98,737	53.04	99,290	56.73	98,845	48.75	99,249	54.08	98,578	53.58	99,163	57.86	98,843	50.35	99,932	55.74	98,622	53.19	99,399	57.18
30	98,153	48.35	98,994	51.90	98,353	43.98	99,015	49.20	97,825	48.97	99,034	52.93	98,214	45.66	99,431	51.00	98,101	48.46	99,256	52.26
35	97,258	43.77	98,647	47.07	97,642	39.28	98,634	44.38	97,039	44.35	98,659	48.12	97,668	40.90	98,855	46.29	97,455	43.77	99,127	47.32
40	96,381	39.14	98,263	42.25	96,401	34.76	97,812	39.74	96,352	39.65	98,252	43.31	96,054	36.55	98,162	41.60	96,728	39.08	98,814	42.46
45	95,249	34.58	97,573	37.53	94,590	30.37	96,883	35.09	95,096	35.14	97,814	38.50	94,431	32.13	97,270	36.95	95,694	34.47	98,270	37.68
50	93,876	30.05	96,687	32.85	91,895	26.19	95,556	30.55	93,730	30.61	96,961	33.81	91,763	27.99	96,202	32.34	94,342	29.93	97,221	33.06
55	92,127	25.57	95,212	28.32	88,408	22.12	93,279	26.23	91,405	26.33	95,245	29.38	89,197	23.73	95,060	27.70	92,425	25.50	96,017	28.45
60	89,134	21.34	92,947	23.95	82,860	18.44	89,962	22.10	88,276	22.17	93,257	24.95	85,314	19.69	92,100	23.51	88,810	21.44	94,131	23.97
65	84,393	17.40	89,672	19.73	75,351	15.03	85,153	18.21	83,957	18.18	89,953	20.77	79,487	15.95	88,652	19.32	83,957	17.53	90,857	19.74
70	77,329	13.76	84,258	15.84	65,596	11.89	77,958	14.66	77,859	14.41	85,614	16.70	70,643	12.64	83,076	15.45	76,728	13.95	86,114	15.69
75	66,607	10.58	76,971	12.10	51,445	9.47	67,614	11.52	67,749	11.19	78,221	13.04	57,582	9.93	73,387	12.16	65,887	10.83	77,962	12.07
80	52,275	7.79	63,733	9.09	37,226	7.14	53,892	8.82	54,504	8.30	68,384	9.56	42,452	7.58	61,525	9.02	51,059	8.25	66,043	8.80
85	34,086	5.62	46,957	6.45	21,608	5.49	37,652	6.55	37,518	5.93	52,036	6.78	25,530	5.95	44,112	6.60	33,539	6.25	46,748	6.40

**Table 1: Abridged life table, by sex, age and Council area, Scotland, 2011-2013 (continued)**

Age x	Moray				North Ayrshire				North Lanarkshire				Orkney Islands				Perth & Kinross			
	Males		Females		Males		Females		Males		Females		Males		Females		Males		Females	
	$l_x$	$e_x^o$	$l_x$	$e_x^o$	$l_x$	$e_x^o$	$l_x$	$e_x^o$	$l_x$	$e_x^o$	$l_x$	$e_x^o$	$l_x$	$e_x^o$	$l_x$	$e_x^o$	$l_x$	$e_x^o$	$l_x$	$e_x^o$
0	100,000	77.92	100,000	81.65	100,000	75.94	100,000	80.95	100,000	75.09	100,000	79.40	100,000	78.76	100,000	82.54	100,000	79.27	100,000	82.76
1	99,598	77.23	99,714	80.88	99,397	75.40	99,714	80.19	99,519	74.45	99,648	78.68	99,713	77.99	100,000	81.54	99,906	78.35	99,857	81.88
5	99,598	73.23	99,516	77.04	99,265	71.50	99,623	76.26	99,455	70.50	99,615	74.71	99,423	74.21	100,000	77.54	99,863	74.38	99,579	78.10
10	99,598	68.23	99,516	72.04	99,221	66.53	99,623	71.26	99,390	65.54	99,598	69.72	99,118	69.43	100,000	72.54	99,863	69.38	99,579	73.10
15	99,480	63.31	99,388	67.13	99,136	61.58	99,579	66.29	99,358	60.56	99,581	64.73	99,118	64.43	100,000	67.54	99,863	64.38	99,579	68.10
20	99,321	58.40	99,215	62.24	98,878	56.74	99,462	61.36	99,131	55.70	99,402	59.84	99,118	59.43	100,000	62.54	99,753	59.45	99,383	63.23
25	99,022	53.57	99,073	57.33	98,380	52.01	99,420	56.39	98,726	50.91	99,276	54.91	98,846	54.59	99,691	57.72	99,180	54.78	99,153	58.37
30	98,363	48.92	98,888	52.43	97,952	47.23	99,200	51.51	98,168	46.19	99,157	49.98	97,668	50.22	99,691	52.72	98,685	50.04	99,072	53.42
35	97,793	44.19	98,692	47.53	96,985	42.67	98,892	46.66	97,279	41.59	98,834	45.13	96,740	45.67	98,815	48.17	98,150	45.30	98,944	48.48
40	96,970	39.54	98,339	42.69	95,402	38.34	98,613	41.78	96,225	37.02	98,319	40.36	96,150	40.94	98,815	43.17	97,552	40.56	98,585	43.65
45	96,126	34.87	97,679	37.96	94,043	33.86	98,172	36.96	94,629	32.60	97,462	35.69	95,049	36.38	98,815	38.17	96,432	36.00	98,044	38.88
50	94,802	30.32	97,015	33.21	92,323	29.44	97,005	32.38	92,561	28.27	96,375	31.06	94,515	31.58	98,626	33.24	95,467	31.34	97,359	34.13
55	92,828	25.91	95,726	28.62	90,434	25.01	95,277	27.92	90,046	23.99	94,626	26.59	93,225	26.98	97,364	28.64	93,395	26.98	96,211	29.51
60	89,484	21.78	93,658	24.20	87,270	20.82	92,898	23.57	86,096	19.98	91,808	22.33	90,879	22.61	94,256	24.50	90,946	22.64	94,246	25.07
65	84,714	17.87	90,284	20.01	81,937	17.01	89,260	19.43	80,401	16.21	87,387	18.33	86,335	18.67	91,449	20.17	87,096	18.53	91,191	20.83
70	78,190	14.15	85,448	16.00	74,074	13.55	83,627	15.57	71,415	12.94	81,036	14.57	79,425	15.08	87,273	16.02	80,860	14.77	86,622	16.80
75	68,427	10.81	77,852	12.32	62,397	10.62	75,310	12.01	59,702	9.99	71,096	11.26	71,666	11.44	80,438	12.17	71,787	11.32	79,865	13.01
80	52,681	8.30	65,429	9.18	47,551	8.16	62,975	8.87	44,448	7.56	57,898	8.26	56,493	8.84	69,192	8.74	58,502	8.32	68,845	9.69
85	34,566	6.34	48,884	6.44	33,073	5.64	44,756	6.47	28,344	5.43	39,035	6.04	38,584	6.78	49,583	6.21	40,457	5.92	52,466	6.93

**Table 1 (continued)**

Age x	Renfrewshire				Scottish Borders				Shetland Islands				South Ayrshire				South Lanarkshire			
	Males		Females		Males		Females		Males		Females		Males		Females		Males		Females	
	$l_x$	$e_x^o$	$l_x$	$e_x^o$	$l_x$	$e_x^o$	$l_x$	$e_x^o$	$l_x$	$e_x^o$	$l_x$	$e_x^o$	$l_x$	$e_x^o$	$l_x$	$e_x^o$	$l_x$	$e_x^o$	$l_x$	$e_x^o$
0	100,000	75.72	100,000	80.60	100,000	79.29	100,000	82.40	100,000	77.85	100,000	82.48	100,000	77.73	100,000	80.92	100,000	76.51	100,000	80.66
1	99,557	75.06	99,825	79.74	99,830	78.43	99,754	81.60	100,000	76.85	100,000	81.48	99,388	77.21	99,614	80.24	99,699	75.74	99,840	79.79
5	99,522	71.08	99,754	75.79	99,716	74.52	99,754	77.60	100,000	72.85	100,000	77.48	99,330	73.26	99,614	76.24	99,662	71.76	99,801	75.82
10	99,487	66.11	99,681	70.85	99,716	69.52	99,697	72.65	100,000	67.85	100,000	72.48	99,330	68.26	99,614	71.24	99,642	66.78	99,761	70.85
15	99,350	61.20	99,646	65.87	99,663	64.55	99,642	67.68	99,762	63.01	100,000	67.48	99,330	63.26	99,614	66.24	99,605	61.80	99,742	65.87
20	99,227	56.27	99,482	60.97	99,358	59.74	99,484	62.79	99,328	58.27	100,000	62.48	99,075	58.41	99,459	61.34	99,347	56.96	99,669	60.91
25	98,903	51.45	99,298	56.08	98,795	55.07	99,360	57.86	98,325	53.84	100,000	57.48	98,753	53.60	99,296	56.43	98,894	52.21	99,576	55.97
30	98,319	46.74	99,017	51.23	98,524	50.21	99,102	53.01	97,354	49.35	99,465	52.77	98,569	48.69	99,127	51.52	98,183	47.57	99,344	51.09
35	97,346	42.18	98,681	46.40	97,868	45.53	98,790	48.17	96,659	44.69	99,465	47.77	97,767	44.07	98,783	46.69	97,431	42.91	99,005	46.26
40	95,894	37.78	98,343	41.55	96,917	40.96	98,328	43.38	95,816	40.06	99,237	42.87	96,898	39.44	97,999	42.05	96,633	38.25	98,512	41.48
45	94,318	33.37	97,667	36.82	96,156	36.26	97,875	38.57	94,840	35.45	98,041	38.37	95,391	35.03	97,202	37.37	95,486	33.68	97,822	36.75
50	92,697	28.91	96,749	32.15	95,245	31.58	97,120	33.85	94,167	30.68	97,671	33.50	93,851	30.56	95,815	32.88	94,058	29.15	96,789	32.12
55	90,394	24.58	95,028	27.68	93,664	27.07	95,824	29.28	92,189	26.29	95,690	29.15	92,359	26.01	94,545	28.29	92,056	24.73	95,201	27.61
60	87,274	20.37	93,012	23.23	91,255	22.72	93,575	24.92	88,791	22.20	92,901	24.95	89,584	21.74	92,271	23.92	88,240	20.69	92,555	23.33
65	80,872	16.79	89,490	19.05	87,465	18.60	90,722	20.62	83,205	18.52	89,515	20.79	85,635	17.63	88,859	19.74	83,254	16.78	89,214	19.11
70	73,305	13.26	83,605	15.21	81,541	14.77	87,175	16.36	77,969	14.60	85,112	16.74	78,404	14.02	84,195	15.70	75,225	13.30	82,892	15.38
75	62,337	10.15	74,025	11.86	72,458	11.31	80,288	12.55	69,805	11.01	79,660	12.72	68,331	10.72	75,757	12.17	63,478	10.30	74,166	11.89
80	47,648	7.51	61,629	8.74	59,419	8.24	68,653	9.25	56,032	8.10	72,857	8.67	52,724	8.16	64,094	8.93	49,123	7.58	61,399	8.84
85	30,710	5.28	44,515	6.14	41,276	5.76	51,585	6.49	38,393	5.68	54,176	5.80	34,329	6.19	44,787	6.70	31,913	5.33	43,495	6.46

**Table 1: Abridged life table, by sex, age and Council area, Scotland, 2011-2013 (continued)**

Age x	Stirling				West Dunbartonshire				West Lothian			
	Males		Females		Males		Females		Males		Females	
	$l_x$	$e_x^o$	$l_x$	$e_x^o$	$l_x$	$e_x^o$	$l_x$	$e_x^o$	$l_x$	$e_x^o$	$l_x$	$e_x^o$
0	100,000	78.53	100,000	82.19	100,000	74.17	100,000	79.10	100,000	77.55	100,000	80.23
1	99,451	77.97	99,838	81.32	99,633	73.44	99,804	78.26	99,790	76.71	99,680	79.48
5	99,451	73.97	99,838	77.32	99,511	69.53	99,673	74.36	99,706	72.77	99,590	75.55
10	99,253	69.11	99,766	72.38	99,444	64.57	99,673	69.36	99,676	67.79	99,590	70.55
15	99,253	64.11	99,642	67.46	99,444	59.57	99,603	64.41	99,645	62.81	99,558	65.58
20	99,047	59.24	99,489	62.56	99,271	54.67	99,479	59.48	99,383	57.97	99,466	60.63
25	98,912	54.31	99,363	57.64	98,760	49.94	99,310	54.58	98,971	53.20	99,237	55.77
30	98,036	49.78	99,108	52.78	98,169	45.23	98,970	49.76	98,406	48.49	98,937	50.93
35	97,808	44.89	98,834	47.92	97,384	40.57	98,563	44.96	97,743	43.81	98,705	46.04
40	97,123	40.19	98,349	43.14	95,981	36.13	97,846	40.27	97,272	39.01	98,305	41.22
45	96,496	35.43	97,693	38.42	93,900	31.87	97,286	35.48	96,210	34.41	97,690	36.47
50	95,474	30.78	96,730	33.77	91,883	27.52	96,162	30.87	94,790	29.89	96,838	31.76
55	93,585	26.35	95,374	29.22	88,993	23.33	93,888	26.56	92,656	25.52	94,990	27.33
60	90,892	22.06	93,608	24.72	84,746	19.37	91,043	22.31	89,376	21.36	92,451	23.02
65	86,927	17.95	90,467	20.50	78,492	15.72	86,508	18.35	84,733	17.40	88,795	18.86
70	80,758	14.13	86,085	16.41	69,707	12.38	79,691	14.70	77,367	13.82	82,542	15.10
75	69,675	10.98	78,770	12.70	55,986	9.81	70,243	11.34	66,704	10.62	72,702	11.80
80	55,139	8.22	66,920	9.51	40,995	7.48	55,405	8.71	51,297	8.06	59,240	8.92
85	39,111	5.56	48,132	7.25	25,512	5.50	39,870	6.13	32,650	6.24	42,197	6.51

**Footnote**

1) Please note that the Scotland-level life expectancy estimate shown here is for use only as a comparator for the corresponding sub-Scotland-level figures. The definitive Scotland-level life expectancy estimate (based on national life tables) is published by the Office for National Statistics: [National Statistics Online - National Life tables](#)

**Note:** This abridged life table is constructed from the estimated population in 2011, 2012 and 2013 and the total number of deaths registered in these years. The column headed  $l_x$  shows the numbers who would survive to the exact age of  $x$  out of 100,000 persons who, from birth, were subject to the mortality probabilities indicated by the death records for 2011-2013. Column  $e_x^o$  shows the expectation of life, that is, the average number of years of life left to persons aged exactly  $x$  who are subject to the 2011-2013 mortality probabilities from age  $x$  onwards.

**Table 2: Abridged life table, by sex, age and NHS Board area<sup>1</sup>, Scotland 2011-2013**

Age x	Scotland <sup>2</sup>				Ayrshire & Arran				Borders				Dumfries & Galloway				Fife			
	Males		Females		Males		Females		Males		Females		Males		Females		Males		Females	
	$l_x$	$e_x^o$	$l_x$	$e_x^o$	$l_x$	$e_x^o$	$l_x$	$e_x^o$	$l_x$	$e_x^o$	$l_x$	$e_x^o$	$l_x$	$e_x^o$	$l_x$	$e_x^o$	$l_x$	$e_x^o$	$l_x$	$e_x^o$
0	100,000	76.88	100,000	80.97	100,000	76.43	100,000	80.55	100,000	79.29	100,000	82.40	100,000	78.04	100,000	81.54	100,000	77.19	100,000	81.20
1	99,591	76.19	99,685	80.22	99,411	75.88	99,541	79.92	99,830	78.43	99,754	81.60	99,635	77.32	99,760	80.74	99,436	76.62	99,596	80.53
5	99,525	72.24	99,623	76.27	99,329	71.94	99,490	75.96	99,716	74.52	99,754	77.60	99,506	73.42	99,715	76.77	99,390	72.66	99,514	76.60
10	99,472	67.28	99,589	71.30	99,278	66.98	99,473	70.97	99,716	69.52	99,697	72.65	99,463	68.45	99,715	71.77	99,341	67.69	99,514	71.60
15	99,416	62.31	99,553	66.32	99,151	62.06	99,423	66.01	99,663	64.55	99,642	67.68	99,422	63.48	99,671	66.80	99,308	62.71	99,514	66.60
20	99,204	57.44	99,429	61.40	98,838	57.25	99,303	61.08	99,358	59.74	99,484	62.79	99,053	58.71	99,438	61.95	99,073	57.86	99,411	61.66
25	98,869	52.63	99,299	56.48	98,442	52.47	99,195	56.15	98,795	55.07	99,360	57.86	98,324	54.12	99,306	57.03	98,737	53.04	99,290	56.73
30	98,355	47.89	99,078	51.60	97,945	47.72	98,939	51.29	98,524	50.21	99,102	53.01	97,700	49.45	99,085	52.15	98,153	48.35	98,994	51.90
35	97,620	43.23	98,770	46.75	97,090	43.12	98,599	46.45	97,868	45.53	98,790	48.17	96,810	44.88	98,815	47.29	97,258	43.77	98,647	47.07
40	96,677	38.63	98,292	41.97	95,963	38.60	98,078	41.69	96,917	40.96	98,328	43.38	95,826	40.32	98,354	42.50	96,381	39.14	98,263	42.25
45	95,437	34.10	97,628	37.23	94,464	34.17	97,502	36.92	96,156	36.26	97,875	38.57	95,000	35.65	97,800	37.72	95,249	34.58	97,573	37.53
50	93,888	29.62	96,619	32.60	92,802	29.74	96,296	32.35	95,245	31.58	97,120	33.85	94,258	30.91	96,766	33.10	93,876	30.05	96,687	32.85
55	91,695	25.27	94,987	28.11	90,888	25.31	94,693	27.86	93,664	27.07	95,824	29.28	92,201	26.54	95,373	28.55	92,127	25.57	95,212	28.32
60	88,241	21.16	92,643	23.76	87,738	21.13	92,482	23.46	91,255	22.72	93,575	24.92	89,469	22.28	93,480	24.07	89,134	21.34	92,947	23.95
65	83,211	17.29	89,093	19.61	82,823	17.23	88,786	19.34	87,465	18.60	90,722	20.62	85,537	18.19	89,877	19.94	84,393	17.40	89,672	19.73
70	75,815	13.73	83,720	15.71	75,304	13.70	83,495	15.40	81,541	14.77	87,175	16.36	79,495	14.38	85,013	15.94	77,329	13.76	84,258	15.84
75	64,755	10.65	75,241	12.20	64,467	10.59	74,756	11.91	72,458	11.31	80,288	12.55	69,719	11.04	76,596	12.41	66,607	10.58	76,971	12.10
80	50,469	7.95	62,832	9.11	49,386	8.06	61,959	8.85	59,419	8.24	68,653	9.25	55,762	8.18	65,620	9.07	52,275	7.79	63,733	9.09
85	32,900	5.87	45,689	6.59	32,798	5.87	43,682	6.51	41,276	5.76	51,585	6.49	37,540	5.94	47,678	6.55	34,086	5.62	46,957	6.45

**Table 2 (continued)**

Age x	Forth Valley				Grampian				Greater Glasgow & Clyde				Highland				Lanarkshire			
	Males		Females		Males		Females		Males		Females		Males		Females		Males		Females	
	$l_x$	$e_x^o$	$l_x$	$e_x^o$	$l_x$	$e_x^o$	$l_x$	$e_x^o$	$l_x$	$e_x^o$	$l_x$	$e_x^o$	$l_x$	$e_x^o$	$l_x$	$e_x^o$	$l_x$	$e_x^o$	$l_x$	$e_x^o$
0	100,000	77.33	100,000	80.99	100,000	78.30	100,000	81.81	100,000	74.92	100,000	79.96	100,000	77.81	100,000	82.00	100,000	75.78	100,000	80.03
1	99,557	76.68	99,744	80.20	99,656	77.57	99,679	81.07	99,580	74.24	99,731	79.17	99,711	77.03	99,617	81.31	99,603	75.08	99,738	79.24
5	99,498	72.72	99,704	76.23	99,617	73.60	99,606	77.13	99,492	70.30	99,655	75.23	99,633	73.09	99,535	77.38	99,552	71.12	99,702	75.27
10	99,419	67.78	99,578	71.32	99,539	68.66	99,582	72.15	99,447	65.33	99,620	70.26	99,537	68.16	99,435	72.46	99,507	66.15	99,675	70.29
15	99,380	62.80	99,498	66.38	99,452	63.71	99,524	67.19	99,381	60.37	99,574	65.29	99,537	63.16	99,396	67.48	99,472	61.17	99,657	65.30
20	99,176	57.93	99,390	61.45	99,224	58.85	99,386	62.28	99,231	55.46	99,486	60.34	99,332	58.29	99,227	62.59	99,231	56.31	99,528	60.38
25	98,936	53.06	99,253	56.53	99,046	53.95	99,298	57.33	98,915	50.63	99,346	55.42	98,834	53.57	99,051	57.70	98,804	51.55	99,417	55.44
30	98,380	48.35	98,951	51.69	98,605	49.18	99,127	52.42	98,369	45.90	99,091	50.56	98,164	48.92	98,913	52.78	98,177	46.86	99,246	50.53
35	97,782	43.63	98,733	46.80	98,007	44.47	98,871	47.55	97,642	41.22	98,727	45.74	97,270	44.34	98,585	47.94	97,351	42.24	98,916	45.70
40	96,836	39.03	98,295	42.00	97,256	39.79	98,472	42.74	96,429	36.71	98,060	41.03	96,507	39.67	98,191	43.13	96,417	37.62	98,412	40.92
45	95,769	34.44	97,688	37.24	96,418	35.12	97,894	37.97	94,850	32.28	97,288	36.34	95,294	35.15	97,772	38.30	95,037	33.13	97,634	36.22
50	94,585	29.84	96,589	32.64	95,242	30.52	97,026	33.29	92,690	27.97	96,198	31.72	93,948	30.61	96,874	33.63	93,275	28.71	96,573	31.59
55	92,760	25.37	94,965	28.15	93,424	26.07	95,715	28.71	89,902	23.76	94,293	27.31	91,723	26.30	95,117	29.21	91,015	24.36	94,904	27.10
60	89,686	21.16	92,657	23.79	90,291	21.88	93,748	24.26	85,627	19.82	91,559	23.05	88,545	22.15	93,050	24.80	87,135	20.33	92,173	22.83
65	85,149	17.15	89,137	19.63	85,836	17.89	90,505	20.04	79,222	16.22	85,506	19.00	84,337	18.13	89,770	20.62	81,789	16.50	88,286	18.73
70	77,439	13.61	84,186	15.64	79,310	14.16	85,582	16.05	70,710	12.87	81,354	15.25	77,908	14.42	85,232	16.58	73,280	13.12	81,950	14.98
75	65,957	10.55	75,823	12.09	68,950	10.91	77,860	12.39	58,082	10.13	71,674	11.97	67,951	11.17	77,819	12.92	61,548	10.15	72,609	11.59
80	51,187	7.87	63,321	8.98	54,342	8.17	65,468	9.27	43,757	7.63	58,718	9.06	54,983	8.21	67,368	9.54	46,751	7.57	59,626	8.57
85	32,993	5.83	44,870	6.65	35,290	6.23	48,222	6.69	27,036	5.80	42,160	6.64	37,585	5.85	51,253	6.75	30,101	5.37	41,279	6.27



**Table 2: Abridged life table, by sex, age and NHS Board area<sup>1</sup>, Scotland 2011-2013 (continued)**

Age x	Lothian				Orkney				Shetland				Tayside				Western Isles			
	Males		Females		Males		Females		Males		Females		Males		Females		Males		Females	
	$l_x$	$e_x^o$	$l_x$	$e_x^o$	$l_x$	$e_x^o$	$l_x$	$e_x^o$	$l_x$	$e_x^o$	$l_x$	$e_x^o$	$l_x$	$e_x^o$	$l_x$	$e_x^o$	$l_x$	$e_x^o$	$l_x$	$e_x^o$
0	100,000	77.69	100,000	81.55	100,000	78.76	100,000	82.54	100,000	77.85	100,000	82.48	100,000	77.63	100,000	81.38	100,000	77.17	100,000	80.42
1	99,581	77.01	99,701	80.80	99,713	77.99	100,000	81.54	100,000	76.85	100,000	81.48	99,647	76.91	99,637	80.67	100,000	76.17	98,540	80.61
5	99,528	73.05	99,659	76.83	99,423	74.21	100,000	77.54	100,000	72.85	100,000	77.48	99,586	72.95	99,510	76.77	100,000	72.17	98,540	76.61
10	99,476	68.09	99,644	71.84	99,118	69.43	100,000	72.54	100,000	67.85	100,000	72.48	99,570	67.96	99,477	71.80	100,000	67.17	98,540	71.61
15	99,429	63.12	99,619	66.86	99,118	64.43	100,000	67.54	99,762	63.01	100,000	67.48	99,511	63.00	99,462	66.81	100,000	62.17	98,540	66.61
20	99,230	58.24	99,510	61.93	99,118	59.43	100,000	62.54	99,328	58.27	100,000	62.48	99,346	58.10	99,267	61.93	99,787	57.30	98,540	61.61
25	98,958	53.40	99,379	57.01	98,846	54.59	99,691	57.72	98,325	53.84	100,000	57.48	98,971	53.31	99,098	57.04	99,294	52.57	98,239	56.79
30	98,600	48.58	99,209	52.10	97,668	50.22	99,691	52.72	97,354	49.35	99,465	52.77	98,404	48.61	98,821	52.19	99,294	47.57	97,706	52.08
35	97,996	43.87	98,977	47.22	96,740	45.67	98,815	48.17	96,659	44.69	99,465	47.77	97,541	44.01	98,488	47.36	98,041	43.15	97,015	47.44
40	97,215	39.20	98,625	42.38	96,150	40.94	98,815	43.17	95,816	40.06	99,237	42.87	96,574	39.43	97,991	42.58	97,828	38.24	96,607	42.63
45	96,159	34.60	97,989	37.64	95,049	36.38	98,815	38.17	94,840	35.45	98,041	38.37	95,188	34.97	97,223	37.90	97,027	33.53	96,276	37.76
50	94,774	30.07	96,977	33.00	94,515	31.58	98,626	33.24	94,167	30.68	97,671	33.50	93,794	30.45	96,249	33.26	94,869	29.24	95,507	33.05
55	92,535	25.74	95,376	28.52	93,225	26.98	97,364	28.64	92,189	26.29	95,690	29.15	91,813	26.05	94,739	28.75	91,804	25.13	93,468	28.71
60	89,059	21.65	93,188	24.13	90,879	22.61	94,256	24.50	88,791	22.20	92,901	24.95	88,941	21.81	92,633	24.35	88,766	20.90	91,570	24.26
65	84,078	17.78	89,865	19.93	86,335	18.67	91,449	20.17	83,205	18.52	89,515	20.79	84,589	17.81	89,325	20.16	83,495	17.07	88,790	19.94
70	77,061	14.17	84,733	15.98	79,425	15.08	87,273	16.02	77,969	14.60	85,112	16.74	77,865	14.13	84,237	16.22	74,991	13.72	84,018	15.93
75	66,582	11.01	76,539	12.42	71,666	11.44	80,438	12.17	69,805	11.01	79,660	12.72	67,293	10.96	76,268	12.66	65,040	10.43	77,086	12.14
80	53,069	8.17	64,438	9.29	56,493	8.84	69,192	8.74	56,032	8.10	72,857	8.67	53,166	8.20	64,390	9.53	49,880	7.85	66,073	8.74
85	34,732	6.17	48,064	6.60	38,584	6.78	49,583	6.21	38,393	5.68	54,176	5.80	36,055	5.91	47,931	6.94	31,940	5.85	49,410	5.85

**Footnotes**

1) 2014 NHS Board areas.

2) Please note that the Scotland-level life expectancy estimate shown here is for use only as a comparator for the corresponding sub-Scotland-level figures. The definitive expectancy estimate (based on national life tables) is published by the Office for National Statistics: Scotland-level life [National Statistics Online - National Life tables](#)

**Note:** This abridged life table is constructed from the estimated population in 2011, 2012 and 2013 and the total number of deaths registered in these years. The column headed  $l_x$  shows the numbers who would survive to the exact age of  $x$  out of 100,000 persons who, from birth, were subject to the mortality probabilities indicated by the death records for 2011-2013. Column  $e_x^o$  shows the expectation of life, that is, the average number of years of life left to persons aged exactly  $x$  who are subject to the 2011-2013 mortality probabilities from age  $x$  onwards.

**Table 3: Abridged life table, by sex, age and Community Health Partnership, Scotland 2011-2013**

Age x	Scotland <sup>1</sup>				Aberdeen City				Aberdeenshire				Angus				Argyll & Bute			
	Males		Females		Males		Females		Males		Females		Males		Females		Males		Females	
	$l_x$	$e_x^o$	$l_x$	$e_x^o$	$l_x$	$e_x^o$	$l_x$	$e_x^o$	$l_x$	$e_x^o$	$l_x$	$e_x^o$	$l_x$	$e_x^o$	$l_x$	$e_x^o$	$l_x$	$e_x^o$	$l_x$	$e_x^o$
0	100,000	76.88	100,000	80.97	100,000	77.13	100,000	81.36	100,000	79.24	100,000	82.19	100,000	78.50	100,000	81.56	100,000	78.21	100,000	81.48
1	99,591	76.19	99,685	80.22	99,575	76.46	99,631	80.66	99,750	78.44	99,711	81.42	99,711	77.72	99,423	81.03	99,831	77.34	99,741	80.69
5	99,525	72.24	99,623	76.27	99,493	72.52	99,602	76.68	99,729	74.46	99,645	77.48	99,655	73.77	99,368	77.08	99,831	73.34	99,581	76.81
10	99,472	67.28	99,589	71.30	99,459	67.55	99,567	71.71	99,597	69.55	99,622	72.49	99,655	68.77	99,368	72.08	99,831	68.34	99,421	71.93
15	99,416	62.31	99,553	66.32	99,355	62.61	99,530	66.73	99,532	64.60	99,575	67.53	99,606	63.80	99,316	67.11	99,831	63.34	99,346	66.98
20	99,204	57.44	99,429	61.40	99,071	57.79	99,405	61.82	99,323	59.73	99,440	62.62	99,375	58.94	98,975	62.34	99,771	58.38	99,001	62.21
25	98,869	52.63	99,299	56.48	99,028	52.81	99,350	56.85	98,970	54.93	99,306	57.70	99,015	54.15	98,803	57.44	99,513	53.52	98,747	57.36
30	98,355	47.89	99,078	51.60	98,627	48.01	99,197	51.93	98,553	50.15	99,112	52.81	98,411	49.47	98,530	52.59	99,076	48.75	98,579	52.46
35	97,620	43.23	98,770	46.75	98,094	43.26	98,888	47.09	97,861	45.49	98,896	47.92	97,420	44.94	98,217	47.75	97,833	44.33	98,411	47.54
40	96,677	38.63	98,292	41.97	97,376	38.56	98,579	42.23	97,104	40.83	98,409	43.14	96,900	40.17	97,738	42.97	96,842	39.76	98,056	42.70
45	95,437	34.10	97,628	37.23	96,303	33.96	97,879	37.51	96,452	36.08	97,944	38.33	95,625	35.67	96,810	38.36	95,749	35.19	97,688	37.86
50	93,888	29.62	96,619	32.60	94,828	29.45	96,709	32.93	95,554	31.40	97,223	33.60	94,377	31.11	95,986	33.67	94,459	30.63	96,668	33.23
55	91,695	25.27	94,987	28.11	92,466	25.14	95,352	28.37	94,214	26.81	95,941	29.01	92,997	26.54	94,767	29.07	92,506	26.23	94,802	28.83
60	88,241	21.16	92,643	23.76	88,854	21.06	93,257	23.95	91,531	22.52	94,102	24.53	90,324	22.25	92,824	24.63	89,200	22.11	92,528	24.48
65	83,211	17.29	89,093	19.61	83,283	17.30	89,318	19.89	88,022	18.32	91,416	20.18	86,305	18.17	90,039	20.31	85,274	18.01	89,306	20.27
70	75,815	13.73	83,720	15.71	75,870	13.75	84,129	15.97	82,118	14.46	86,648	16.15	80,039	14.39	85,316	16.30	78,074	14.44	84,329	16.32
75	64,755	10.65	75,241	12.20	64,308	10.77	76,436	12.32	72,459	11.05	78,863	12.50	70,273	11.05	78,215	12.55	68,447	11.12	76,879	12.66
80	50,469	7.95	62,832	9.11	49,992	8.14	64,017	9.23	58,280	8.13	66,560	9.35	55,780	8.27	65,765	9.45	56,117	8.01	65,127	9.50
85	32,900	5.87	45,689	6.59	32,468	6.19	46,411	6.78	37,681	6.21	49,475	6.71	38,074	5.95	48,791	6.87	37,749	5.70	49,527	6.70

**Table 3 (continued)**

Age x	Clackmannanshire				Dumfries & Galloway				Dundee				Dunfermline & West Fife				East Ayrshire			
	Males		Females		Males		Females		Males		Females		Males		Females		Males		Females	
	$l_x$	$e_x^o$	$l_x$	$e_x^o$	$l_x$	$e_x^o$	$l_x$	$e_x^o$	$l_x$	$e_x^o$	$l_x$	$e_x^o$	$l_x$	$e_x^o$	$l_x$	$e_x^o$	$l_x$	$e_x^o$	$l_x$	$e_x^o$
0	100,000	77.03	100,000	79.91	100,000	78.04	100,000	81.54	100,000	75.11	100,000	79.73	100,000	76.83	100,000	81.30	100,000	75.76	100,000	79.70
1	99,788	76.19	99,773	79.09	99,635	77.32	99,760	80.74	99,395	74.57	99,603	79.05	99,452	76.25	99,727	80.52	99,443	75.18	99,306	79.26
5	99,788	72.19	99,773	75.09	99,506	73.42	99,715	76.77	99,315	70.62	99,560	75.09	99,382	72.31	99,689	76.55	99,395	71.22	99,257	75.29
10	99,788	67.19	99,773	70.09	99,463	68.45	99,715	71.77	99,268	65.66	99,463	70.16	99,305	67.36	99,689	71.55	99,295	66.29	99,205	70.33
15	99,788	62.19	99,656	65.17	99,422	63.48	99,671	66.80	99,131	60.74	99,463	65.16	99,266	62.39	99,689	66.55	99,003	61.47	99,105	65.40
20	99,685	57.25	99,656	60.17	99,053	58.71	99,438	61.95	98,962	55.84	99,366	60.22	99,075	57.50	99,607	61.60	98,580	56.73	99,014	60.46
25	99,459	52.38	99,537	55.24	98,324	54.12	99,306	57.03	98,685	50.99	99,225	55.30	98,785	52.66	99,523	56.65	98,230	51.92	98,881	55.54
30	99,231	47.49	98,850	50.60	97,700	49.45	99,085	52.15	98,090	46.29	98,812	50.52	98,263	47.93	99,334	51.76	97,424	47.33	98,516	50.73
35	98,346	42.90	98,742	45.65	96,810	44.88	98,815	47.29	97,028	41.77	98,303	45.77	97,308	43.38	99,022	46.91	96,638	42.69	98,147	45.91
40	96,895	38.50	98,231	40.88	95,826	40.32	98,354	42.50	95,329	37.47	97,652	41.06	96,496	38.72	98,658	42.08	95,769	38.06	97,581	41.17
45	95,470	34.04	97,429	36.19	95,000	35.65	97,800	37.72	93,562	33.13	96,758	36.41	95,472	34.11	98,094	37.30	94,135	33.68	97,047	36.38
50	93,958	29.55	96,082	31.67	94,258	30.91	96,766	33.10	91,530	28.81	95,327	31.92	94,320	29.49	97,323	32.58	92,429	29.25	95,955	31.77
55	91,861	25.16	94,225	27.24	92,201	26.54	95,373	28.55	89,137	24.51	93,193	27.60	92,419	25.05	95,708	28.09	90,099	24.94	94,171	27.32
60	89,106	20.87	91,703	22.92	89,469	22.28	93,480	24.07	85,602	20.42	90,766	23.27	89,319	20.83	93,476	23.70	86,606	20.85	92,220	22.84
65	84,672	16.83	87,051	19.01	85,537	18.19	89,877	19.94	80,294	16.61	86,637	19.26	84,124	16.96	89,507	19.64	81,229	17.06	88,164	18.78
70	75,073	13.66	82,495	14.93	79,495	14.38	85,013	15.94	72,480	13.13	80,528	15.53	76,567	13.39	83,750	15.82	73,807	13.53	82,612	14.87
75	65,041	10.38	72,602	11.62	69,719	11.04	76,596	12.41	59,492	10.45	70,501	12.38	65,575	10.22	76,257	12.12	63,203	10.38	73,020	11.50
80	51,005	7.55	59,006	8.72	55,762	8.18	65,620	9.07	45,007	8.00	58,400	9.43	51,039	7.41	62,480	9.25	48,320	7.80	58,504	8.73
85	30,678	5.89	40,975	6.46	37,540	5.94	47,678	6.55	29,602	5.87	42,495	7.02	31,513	5.46	46,455	6.57	31,061	5.75	41,276	6.34

**Table 3: Abridged life table, by sex, age and Community Health Partnership, Scotland 2011-2013 (continued)**

Age x	East Dunbartonshire				East Lothian				East Renfrewshire				Edinburgh				Falkirk			
	Males		Females		Males		Females		Males		Females		Males		Females		Males		Females	
	$l_x$	$e_x^o$	$l_x$	$e_x^o$	$l_x$	$e_x^o$	$l_x$	$e_x^o$	$l_x$	$e_x^o$	$l_x$	$e_x^o$	$l_x$	$e_x^o$	$l_x$	$e_x^o$	$l_x$	$e_x^o$	$l_x$	$e_x^o$
0	100,000	80.52	100,000	83.85	100,000	78.51	100,000	81.63	100,000	79.66	100,000	82.98	100,000	77.57	100,000	81.95	100,000	76.78	100,000	80.68
1	99,796	79.69	100,000	82.85	99,768	77.70	99,585	80.97	99,713	78.89	99,618	82.29	99,483	76.97	99,712	81.18	99,526	76.14	99,689	79.93
5	99,735	75.74	99,934	78.90	99,660	73.78	99,530	77.02	99,650	74.94	99,618	78.29	99,446	73.00	99,699	77.19	99,421	72.22	99,618	75.99
10	99,735	70.74	99,934	73.90	99,660	68.78	99,530	72.02	99,533	70.02	99,618	73.29	99,402	68.03	99,683	72.20	99,384	67.25	99,424	71.13
15	99,632	65.81	99,823	68.98	99,602	63.82	99,471	67.06	99,533	65.02	99,505	68.37	99,355	63.06	99,667	67.22	99,308	62.30	99,384	66.16
20	99,586	60.84	99,771	64.02	99,497	58.88	99,206	62.23	99,376	60.12	99,505	63.37	99,183	58.17	99,592	62.26	99,071	57.44	99,271	61.23
25	99,385	55.95	99,656	59.09	99,124	54.09	99,037	57.33	99,195	55.23	99,440	58.41	98,954	53.29	99,486	57.33	98,741	52.62	99,120	56.32
30	98,915	51.21	99,499	54.18	98,567	49.38	98,778	52.48	98,022	50.86	99,263	53.51	98,682	48.43	99,353	52.40	98,255	47.87	98,910	51.44
35	98,150	46.59	99,294	49.29	98,020	44.65	98,416	47.66	97,672	46.03	99,112	48.59	98,091	43.71	99,125	47.52	97,579	43.19	98,684	46.55
40	97,574	41.85	98,959	44.44	97,032	40.08	98,209	42.76	97,058	41.31	98,627	43.82	97,235	39.07	98,757	42.68	96,667	38.57	98,292	41.72
45	97,066	37.05	98,633	39.58	96,242	35.38	97,577	38.02	96,373	36.58	97,996	39.08	96,119	34.50	98,092	37.96	95,499	34.01	97,775	36.93
50	96,014	32.43	98,023	34.81	94,813	30.88	96,471	33.42	95,389	31.93	97,391	34.31	94,755	29.96	97,041	33.34	94,337	29.40	96,682	32.32
55	94,578	27.89	96,649	30.27	93,010	26.43	94,945	28.92	93,907	27.40	96,264	29.68	92,301	25.69	95,443	28.86	92,639	24.89	94,983	27.85
60	92,367	23.49	94,982	25.76	90,339	22.14	93,309	24.38	91,830	22.96	94,342	25.24	88,585	21.66	93,197	24.49	89,235	20.75	92,442	23.55
65	88,751	19.35	92,148	21.48	85,540	18.24	90,207	20.14	87,592	18.95	91,442	20.96	83,399	17.85	89,946	20.29	84,340	16.80	89,121	19.34
70	82,477	15.63	87,633	17.45	79,442	14.45	85,360	16.14	82,212	15.03	88,050	16.67	76,332	14.27	85,136	16.29	76,437	13.28	83,673	15.43
75	73,749	12.19	79,841	13.91	69,742	11.11	77,984	12.43	72,621	11.68	79,498	13.19	65,806	11.16	77,407	12.67	64,226	10.33	75,213	11.89
80	61,588	9.10	69,368	10.63	56,651	8.10	65,640	9.29	58,210	8.96	68,888	9.84	53,168	8.22	65,787	9.47	49,106	7.75	62,671	8.76
85	41,743	7.24	52,573	8.23	36,901	6.09	49,906	6.44	39,824	6.94	52,886	7.06	35,105	6.16	49,871	6.69	30,356	5.99	44,281	6.37

**Table 3 (continued)**

Age x	Glasgow City				Glenrothes & North East Fife				Highland				Inverclyde				Kirkcaldy & Levenmouth			
	Males		Females		Males		Females		Males		Females		Males		Females		Males		Females	
	$l_x$	$e_x^o$	$l_x$	$e_x^o$	$l_x$	$e_x^o$	$l_x$	$e_x^o$	$l_x$	$e_x^o$	$l_x$	$e_x^o$	$l_x$	$e_x^o$	$l_x$	$e_x^o$	$l_x$	$e_x^o$	$l_x$	$e_x^o$
0	100,000	73.01	100,000	78.55	100,000	78.37	100,000	81.74	100,000	77.65	100,000	82.23	100,000	74.66	100,000	80.70	100,000	76.16	100,000	80.37
1	99,499	72.37	99,649	77.82	99,558	77.72	99,528	81.13	99,671	76.91	99,577	81.58	99,920	73.72	100,000	79.70	99,293	75.70	99,465	79.80
5	99,400	68.44	99,558	73.89	99,558	73.72	99,472	77.17	99,569	72.99	99,522	77.62	99,767	69.83	100,000	75.70	99,238	71.75	99,290	75.94
10	99,365	63.47	99,510	68.93	99,504	68.76	99,472	72.17	99,440	68.08	99,441	72.68	99,689	64.89	100,000	70.70	99,238	66.75	99,290	70.94
15	99,296	58.51	99,486	63.94	99,504	63.76	99,472	67.17	99,440	63.08	99,415	67.70	99,689	59.89	100,000	65.70	99,175	61.79	99,290	65.94
20	99,149	53.59	99,392	59.00	99,342	58.86	99,359	62.25	99,178	58.24	99,312	62.77	99,355	55.08	100,000	60.70	98,763	57.03	99,171	61.02
25	98,845	48.75	99,249	54.08	99,150	53.97	99,269	57.30	98,578	53.58	99,163	57.86	98,843	50.35	99,932	55.74	98,091	52.41	98,941	56.15
30	98,353	43.98	99,015	49.20	98,693	49.21	98,908	52.50	97,825	48.97	99,034	52.93	98,214	45.66	99,431	51.00	97,265	47.83	98,557	51.36
35	97,642	39.28	98,634	44.38	97,990	44.54	98,704	47.60	97,039	44.35	98,659	48.12	97,668	40.90	98,855	46.29	96,259	43.30	97,993	46.64
40	96,401	34.76	97,812	39.74	97,044	39.95	98,351	42.77	96,352	39.65	98,252	43.31	96,054	36.55	98,162	41.60	95,348	38.69	97,540	41.85
45	94,590	30.37	96,883	35.09	96,038	35.34	97,561	38.09	95,096	35.14	97,814	38.50	94,431	32.13	97,270	36.95	93,892	34.26	96,770	37.16
50	91,895	26.19	95,556	30.55	94,588	30.85	96,804	33.37	93,730	30.61	96,961	33.81	91,763	27.99	96,202	32.34	92,265	29.82	95,553	32.60
55	88,408	22.12	93,279	26.23	93,336	26.23	95,507	28.79	91,405	26.33	95,245	29.38	89,197	23.73	95,060	27.70	90,152	25.46	94,070	28.08
60	82,860	18.44	89,962	22.10	90,607	21.94	93,558	24.34	88,276	22.17	93,257	24.95	85,314	19.69	92,100	23.51	87,010	21.29	91,377	23.83
65	75,351	15.03	85,153	18.21	86,179	17.94	90,763	20.01	83,957	18.18	89,953	20.77	79,487	15.95	88,652	19.32	82,552	17.30	88,492	19.53
70	65,596	11.89	77,958	14.66	80,052	14.12	85,673	16.05	77,859	14.41	85,614	16.70	70,643	12.64	83,076	15.45	75,020	13.79	83,160	15.62
75	51,445	9.47	67,614	11.52	69,619	10.87	78,924	12.21	67,749	11.19	78,221	13.04	57,582	9.93	73,387	12.16	64,300	10.67	75,496	11.95
80	37,226	7.14	53,892	8.82	55,869	7.92	66,863	8.96	54,504	8.30	68,384	9.56	42,452	7.58	61,525	9.02	49,540	8.10	61,586	9.08
85	21,608	5.49	37,652	6.55	37,794	5.52	50,171	6.11	37,518	5.93	52,036	6.78	25,530	5.95	44,112	6.60	32,878	5.94	43,952	6.73

**Table 3: Abridged life table, by sex, age and Community Health Partnership, Scotland 2011-2013 (continued)**

Age x	Midlothian				Moray				North Ayrshire				North Lanarkshire				Orkney			
	Males		Females		Males		Females		Males		Females		Males		Females		Males		Females	
	$l_x$	$e_x^\circ$	$l_x$	$e_x^\circ$	$l_x$	$e_x^\circ$	$l_x$	$e_x^\circ$	$l_x$	$e_x^\circ$	$l_x$	$e_x^\circ$	$l_x$	$e_x^\circ$	$l_x$	$e_x^\circ$	$l_x$	$e_x^\circ$	$l_x$	$e_x^\circ$
0	100,000	77.25	100,000	81.75	100,000	77.92	100,000	81.65	100,000	75.94	100,000	80.95	100,000	75.09	100,000	79.40	100,000	78.76	100,000	82.54
1	99,475	76.66	99,807	80.90	99,598	77.23	99,714	80.88	99,397	75.40	99,714	80.19	99,519	74.45	99,648	78.68	99,713	77.99	100,000	81.54
5	99,475	72.66	99,740	76.96	99,598	73.23	99,516	77.04	99,265	71.50	99,623	76.26	99,455	70.50	99,615	74.71	99,423	74.21	100,000	77.54
10	99,274	67.80	99,670	72.01	99,598	68.23	99,516	72.04	99,221	66.53	99,623	71.26	99,390	65.54	99,598	69.72	99,118	69.43	100,000	72.54
15	99,207	62.85	99,670	67.01	99,480	63.31	99,388	67.13	99,136	61.58	99,579	66.29	99,358	60.56	99,581	64.73	99,118	64.43	100,000	67.54
20	98,890	58.04	99,535	62.10	99,321	58.40	99,215	62.24	98,878	56.74	99,462	61.36	99,131	55.70	99,402	59.84	99,118	59.43	100,000	62.54
25	98,622	53.19	99,399	57.18	99,022	53.57	99,073	57.33	98,380	52.01	99,420	56.39	98,726	50.91	99,276	54.91	98,846	54.59	99,691	57.72
30	98,101	48.46	99,256	52.26	98,363	48.92	98,888	52.43	97,952	47.23	99,200	51.51	98,168	46.19	99,157	49.98	97,668	50.22	99,691	52.72
35	97,455	43.77	99,127	47.32	97,793	44.19	98,692	47.53	96,985	42.67	98,892	46.66	97,279	41.59	98,834	45.13	96,740	45.67	98,815	48.17
40	96,728	39.08	98,814	42.46	96,970	39.54	98,339	42.69	95,402	38.34	98,613	41.78	96,225	37.02	98,319	40.36	96,150	40.94	98,815	43.17
45	95,694	34.47	98,270	37.68	96,126	34.87	97,679	37.96	94,043	33.86	98,172	36.96	94,629	32.60	97,462	35.69	95,049	36.38	98,815	38.17
50	94,342	29.93	97,221	33.06	94,802	30.32	97,015	33.21	92,323	29.44	97,005	32.38	92,561	28.27	96,375	31.06	94,515	31.58	98,626	33.24
55	92,425	25.50	96,017	28.45	92,828	25.91	95,726	28.62	90,434	25.01	95,277	27.92	90,046	23.99	94,626	26.59	93,225	26.98	97,364	28.64
60	88,810	21.44	94,131	23.97	89,484	21.78	93,658	24.20	87,270	20.82	92,898	23.57	86,096	19.98	91,808	22.33	90,879	22.61	94,256	24.50
65	83,957	17.53	90,857	19.74	84,714	17.87	90,284	20.01	81,937	17.01	89,260	19.43	80,401	16.21	87,387	18.33	86,335	18.67	91,449	20.17
70	76,728	13.95	86,114	15.69	78,190	14.15	85,448	16.00	74,074	13.55	83,627	15.57	71,415	12.94	81,036	14.57	79,425	15.08	87,273	16.02
75	65,887	10.83	77,962	12.07	68,427	10.81	77,852	12.32	62,397	10.62	75,310	12.01	59,702	9.99	71,096	11.26	71,666	11.44	80,438	12.17
80	51,059	8.25	66,043	8.80	52,681	8.30	65,429	9.18	47,551	8.16	62,975	8.87	44,448	7.56	57,898	8.26	56,493	8.84	69,192	8.74
85	33,539	6.25	46,748	6.40	34,566	6.34	48,884	6.44	33,073	5.64	44,756	6.47	28,344	5.43	39,035	6.04	38,584	6.78	49,583	6.21

**Table 3 (continued)**

Age x	Perth & Kinross				Renfrewshire				Scottish Borders				Shetland				South Ayrshire			
	Males		Females		Males		Females		Males		Females		Males		Females		Males		Females	
	$l_x$	$e_x^\circ$	$l_x$	$e_x^\circ$	$l_x$	$e_x^\circ$	$l_x$	$e_x^\circ$	$l_x$	$e_x^\circ$	$l_x$	$e_x^\circ$	$l_x$	$e_x^\circ$	$l_x$	$e_x^\circ$	$l_x$	$e_x^\circ$	$l_x$	$e_x^\circ$
0	100,000	79.27	100,000	82.76	100,000	75.72	100,000	80.60	100,000	79.29	100,000	82.40	100,000	77.85	100,000	82.48	100,000	77.73	100,000	80.92
1	99,906	78.35	99,857	81.88	99,557	75.06	99,825	79.74	99,830	78.43	99,754	81.60	100,000	76.85	100,000	81.48	99,388	77.21	99,614	80.24
5	99,863	74.38	99,579	78.10	99,522	71.08	99,754	75.79	99,716	74.52	99,754	77.60	100,000	72.85	100,000	77.48	99,330	73.26	99,614	76.24
10	99,863	69.38	99,579	73.10	99,487	66.11	99,681	70.85	99,716	69.52	99,697	72.65	100,000	67.85	100,000	72.48	99,330	68.26	99,614	71.24
15	99,863	64.38	99,579	68.10	99,350	61.20	99,646	65.87	99,663	64.55	99,642	67.68	99,762	63.01	100,000	67.48	99,330	63.26	99,614	66.24
20	99,753	59.45	99,383	63.23	99,227	56.27	99,482	60.97	99,358	59.74	99,484	62.79	99,328	58.27	100,000	62.48	99,075	58.41	99,459	61.34
25	99,180	54.78	99,153	58.37	98,903	51.45	99,298	56.08	98,795	55.07	99,360	57.86	98,325	53.84	100,000	57.48	98,753	53.60	99,296	56.43
30	98,685	50.04	99,072	53.42	98,319	46.74	99,017	51.23	98,524	50.21	99,102	53.01	97,354	49.35	99,465	52.77	98,569	48.69	99,127	51.52
35	98,150	45.30	98,944	48.48	97,346	42.18	98,681	46.40	97,868	45.53	98,790	48.17	96,659	44.69	99,465	47.77	97,767	44.07	98,783	46.69
40	97,552	40.56	98,585	43.65	95,894	37.78	98,343	41.55	96,917	40.96	98,328	43.38	95,816	40.06	99,237	42.87	96,898	39.44	97,999	42.05
45	96,432	36.00	98,044	38.88	94,318	33.37	97,667	36.82	96,156	36.26	97,875	38.57	94,840	35.45	98,041	38.37	95,391	35.03	97,202	37.37
50	95,467	31.34	97,359	34.13	92,697	28.91	96,749	32.15	95,245	31.58	97,120	33.85	94,167	30.68	97,671	33.50	93,851	30.56	95,815	32.88
55	93,395	26.98	96,211	29.51	90,394	24.58	95,028	27.68	93,664	27.07	95,824	29.28	92,189	26.29	95,690	29.15	92,359	26.01	94,545	28.29
60	90,946	22.64	94,246	25.07	87,274	20.37	93,012	23.23	91,255	22.72	93,575	24.92	88,791	22.20	92,901	24.95	89,584	21.74	92,271	23.92
65	87,096	18.53	91,191	20.83	80,872	16.79	89,490	19.05	87,465	18.60	90,722	20.62	83,205	18.52	89,515	20.79	85,635	17.63	88,859	19.74
70	80,860	14.77	86,622	16.80	73,305	13.26	83,605	15.21	81,541	14.77	87,175	16.36	77,969	14.60	85,112	16.74	78,404	14.02	84,195	15.70
75	71,787	11.32	79,865	13.01	62,337	10.15	74,025	11.86	72,458	11.31	80,288	12.55	69,805	11.01	79,660	12.72	68,331	10.72	75,757	12.17
80	58,502	8.32	68,845	9.69	47,648	7.51	61,629	8.74	59,419	8.24	68,653	9.25	56,032	8.10	72,857	8.67	52,724	8.16	64,094	8.93
85	40,457	5.92	52,466	6.93	30,710	5.28	44,515	6.14	41,276	5.76	51,585	6.49	38,393	5.68	54,176	5.80	34,329	6.19	44,787	6.70

**Table 3: Abridged life table, by sex, age and Community Health Partnership, Scotland 2011-2013 (continued)**

Age x	South Lanarkshire				Stirling				West Dunbartonshire				West Lothian				Western Isles			
	Males		Females		Males		Females		Males		Females		Males		Females		Males		Females	
	$l_x$	$e_x^o$	$l_x$	$e_x^o$	$l_x$	$e_x^o$	$l_x$	$e_x^o$	$l_x$	$e_x^o$	$l_x$	$e_x^o$	$l_x$	$e_x^o$	$l_x$	$e_x^o$	$l_x$	$e_x^o$	$l_x$	$e_x^o$
0	100,000	76.51	100,000	80.66	100,000	78.53	100,000	82.19	100,000	74.17	100,000	79.10	100,000	77.55	100,000	80.23	100,000	77.17	100,000	80.42
1	99,699	75.74	99,840	79.79	99,451	77.97	99,838	81.32	99,633	73.44	99,804	78.26	99,790	76.71	99,680	79.48	100,000	76.17	98,540	80.61
5	99,662	71.76	99,801	75.82	99,451	73.97	99,838	77.32	99,511	69.53	99,673	74.36	99,706	72.77	99,590	75.55	100,000	72.17	98,540	76.61
10	99,642	66.78	99,761	70.85	99,253	69.11	99,766	72.38	99,444	64.57	99,673	69.36	99,676	67.79	99,590	70.55	100,000	67.17	98,540	71.61
15	99,605	61.80	99,742	65.87	99,253	64.11	99,642	67.46	99,444	59.57	99,603	64.41	99,645	62.81	99,558	65.58	100,000	62.17	98,540	66.61
20	99,347	56.96	99,669	60.91	99,047	59.24	99,489	62.56	99,271	54.67	99,479	59.48	99,383	57.97	99,466	60.63	99,787	57.30	98,540	61.61
25	98,894	52.21	99,576	55.97	98,912	54.31	99,363	57.64	98,760	49.94	99,310	54.58	98,971	53.20	99,237	55.77	99,294	52.57	98,239	56.79
30	98,183	47.57	99,344	51.09	98,036	49.78	99,108	52.78	98,169	45.23	98,970	49.76	98,406	48.49	98,937	50.93	99,294	47.57	97,706	52.08
35	97,431	42.91	99,005	46.26	97,808	44.89	98,834	47.92	97,384	40.57	98,563	44.96	97,743	43.81	98,705	46.04	98,041	43.15	97,015	47.44
40	96,633	38.25	98,512	41.48	97,123	40.19	98,349	43.14	95,981	36.13	97,846	40.27	97,272	39.01	98,305	41.22	97,828	38.24	96,607	42.63
45	95,486	33.68	97,822	36.75	96,496	35.43	97,693	38.42	93,900	31.87	97,286	35.48	96,210	34.41	97,690	36.47	97,027	33.53	96,276	37.76
50	94,058	29.15	96,789	32.12	95,474	30.78	96,730	33.77	91,883	27.52	96,162	30.87	94,790	29.89	96,838	31.76	94,869	29.24	95,507	33.05
55	92,056	24.73	95,201	27.61	93,585	26.35	95,374	29.22	88,993	23.33	93,888	26.56	92,656	25.52	94,990	27.33	91,804	25.13	93,468	28.71
60	88,240	20.69	92,555	23.33	90,892	22.06	93,608	24.72	84,746	19.37	91,043	22.31	89,376	21.36	92,451	23.02	88,766	20.90	91,570	24.26
65	83,254	16.78	89,214	19.11	86,927	17.95	90,467	20.50	78,492	15.72	86,508	18.35	84,733	17.40	88,795	18.86	83,495	17.07	88,790	19.94
70	75,225	13.30	82,892	15.38	80,758	14.13	86,085	16.41	69,707	12.38	79,691	14.70	77,367	13.82	82,542	15.10	74,991	13.72	84,018	15.93
75	63,478	10.30	74,166	11.89	69,675	10.98	78,770	12.70	55,986	9.81	70,243	11.34	66,704	10.62	72,702	11.80	65,040	10.43	77,086	12.14
80	49,123	7.58	61,399	8.84	55,139	8.22	66,920	9.51	40,995	7.48	55,405	8.71	51,297	8.06	59,240	8.92	49,880	7.85	66,073	8.74
85	31,913	5.33	43,495	6.46	39,111	5.56	48,132	7.25	25,512	5.50	39,870	6.13	32,650	6.24	42,197	6.51	31,940	5.85	49,410	5.85

**Footnote**

1) Please note that the Scotland-level life expectancy estimate shown here is for use only as a comparator for the corresponding sub-Scotland-level figures. The definitive Scotland-level life expectancy estimate (based on national life tables) is published by the Office for National Statistics: [National Statistics Online - National Life tables](#)

**Note:** This abridged life table is constructed from the estimated population in 2011, 2012 and 2013 and the total number of deaths registered in these years. The column headed  $l_x$  shows the numbers who would survive to the exact age of  $x$  out of 100,000 persons who, from birth, were subject to the mortality probabilities indicated by the death records for 2011-2013. Column  $e_x^o$  shows the expectation of life, that is, the average number of years of life left to persons aged exactly  $x$  who are subject to the 2011-2013 mortality probabilities from age  $x$  onwards.

**Table 4: Abridged life table, by sex, age and 2012 Urban Rural 6-fold classification, Scotland 2011-2013**

Age x	Scotland <sup>1</sup>				Large Urban Areas				Other Urban Areas				Accessible Small Towns				Remote Small Towns			
	Males		Females		Males		Females		Males		Females		Males		Females		Males		Females	
	$l_x$	$e_x^o$	$l_x$	$e_x^o$	$l_x$	$e_x^o$	$l_x$	$e_x^o$	$l_x$	$e_x^o$	$l_x$	$e_x^o$	$l_x$	$e_x^o$	$l_x$	$e_x^o$	$l_x$	$e_x^o$	$l_x$	$e_x^o$
0	100,000	76.88	100,000	80.97	100,000	75.57	100,000	80.29	100,000	76.61	100,000	80.60	100,000	77.88	100,000	81.45	100,000	76.77	100,000	81.19
1	99,591	76.19	99,685	80.22	99,518	74.93	99,664	79.56	99,608	75.91	99,731	79.82	99,689	77.13	99,659	80.73	99,673	76.02	99,828	80.33
5	99,525	72.24	99,623	76.27	99,444	70.99	99,617	75.60	99,535	71.96	99,647	75.88	99,676	73.14	99,605	76.77	99,673	72.02	99,759	76.38
10	99,472	67.28	99,589	71.30	99,395	66.02	99,580	70.63	99,487	67.00	99,615	70.90	99,650	68.15	99,578	71.79	99,640	67.04	99,723	71.41
15	99,416	62.31	99,553	66.32	99,340	61.05	99,549	65.65	99,435	62.03	99,573	65.93	99,563	63.21	99,565	66.80	99,578	62.08	99,691	66.43
20	99,204	57.44	99,429	61.40	99,170	56.15	99,451	60.71	99,178	57.19	99,420	61.03	99,345	58.35	99,466	61.86	99,356	57.22	99,661	61.45
25	98,869	52.63	99,299	56.48	98,914	51.29	99,341	55.78	98,763	52.42	99,275	56.12	99,015	53.53	99,302	56.96	98,700	52.58	99,407	56.60
30	98,355	47.89	99,078	51.60	98,435	46.53	99,144	50.88	98,145	47.73	99,031	51.25	98,538	48.78	98,920	52.17	97,924	47.98	99,128	51.75
35	97,620	43.23	98,770	46.75	97,708	41.86	98,809	46.05	97,326	43.11	98,696	46.41	97,859	44.10	98,724	47.27	96,968	43.43	98,735	46.95
40	96,677	38.63	98,292	41.97	96,643	37.29	98,264	41.29	96,337	38.53	98,214	41.63	96,901	39.51	98,327	42.45	96,255	38.73	98,239	42.17
45	95,437	34.10	97,628	37.23	95,156	32.84	97,468	36.60	95,064	34.01	97,538	36.90	95,917	34.89	97,693	37.71	95,076	34.18	97,607	37.43
50	93,888	29.62	96,619	32.60	93,218	28.47	96,326	32.01	93,564	29.52	96,502	32.27	94,626	30.33	96,711	33.07	93,765	29.62	96,598	32.80
55	91,695	25.27	94,987	28.11	90,507	24.24	94,492	27.58	91,424	25.15	94,815	27.80	92,799	25.88	95,154	28.57	91,297	25.35	94,863	28.35
60	88,241	21.16	92,643	23.76	86,323	20.30	91,864	23.30	88,116	21.00	92,394	23.46	89,775	21.67	93,159	24.13	88,206	21.16	92,797	23.92
65	83,211	17.29	89,093	19.61	80,360	16.62	87,806	19.26	83,168	17.10	88,812	19.31	85,290	17.68	89,891	19.91	83,198	17.28	89,132	19.81
70	75,815	13.73	83,720	15.71	72,104	13.24	81,854	15.48	75,459	13.59	83,391	15.40	78,214	14.05	84,401	16.05	75,952	13.69	84,000	15.86
75	64,755	10.65	75,241	12.20	59,993	10.40	72,674	12.12	64,238	10.53	74,501	11.94	68,289	10.73	76,798	12.39	64,696	10.63	75,967	12.28
80	50,469	7.95	62,832	9.11	45,838	7.84	60,036	9.14	49,370	7.94	61,817	8.88	54,625	7.79	64,454	9.28	50,636	7.89	64,114	9.08
85	32,900	5.87	45,689	6.59	29,183	5.89	43,541	6.66	32,042	5.89	44,194	6.42	35,223	5.70	47,124	6.78	33,091	5.75	47,622	6.36

Age x	Accessible Rural				Remote Rural			
	Males		Females		Males		Females	
	$l_x$	$e_x^o$	$l_x$	$e_x^o$	$l_x$	$e_x^o$	$l_x$	$e_x^o$
0	100,000	79.15	100,000	82.48	100,000	79.21	100,000	82.60
1	99,625	78.44	99,649	81.77	99,801	78.37	99,602	81.93
5	99,553	74.50	99,593	77.81	99,723	74.43	99,540	77.98
10	99,465	69.56	99,547	72.85	99,650	69.48	99,522	72.99
15	99,414	64.60	99,512	67.87	99,600	64.51	99,451	68.04
20	99,192	59.74	99,397	62.95	99,388	59.65	99,199	63.21
25	98,837	54.94	99,247	58.04	98,943	54.90	99,124	58.25
30	98,553	50.09	99,100	53.12	98,367	50.21	98,938	53.36
35	98,005	45.36	98,868	48.24	97,744	45.51	98,769	48.45
40	97,491	40.59	98,505	43.41	96,962	40.86	98,422	43.61
45	96,738	35.88	98,051	38.60	95,993	36.25	98,082	38.75
50	95,654	31.26	97,291	33.88	94,949	31.62	97,398	34.01
55	94,298	26.67	96,258	29.22	93,338	27.12	95,939	29.48
60	91,619	22.38	94,368	24.75	90,721	22.83	93,906	25.07
65	87,765	18.25	91,558	20.43	86,675	18.78	91,123	20.76
70	81,720	14.42	86,975	16.38	80,997	14.92	86,998	16.62
75	71,735	11.08	80,052	12.58	72,178	11.44	79,923	12.87
80	57,804	8.15	68,302	9.31	59,081	8.42	69,221	9.48
85	39,239	5.82	50,780	6.66	41,098	6.01	52,018	6.79

[Footnote 1] Please note that the Scotland-level life expectancy estimate shown here is for use only as a comparator for the corresponding sub-Scotland-level figures. The definitive Scotland-level life expectancy estimate (based on national life tables) is published by the Office for National Statistics: [National Statistics Online - National Life tables](#)

**Note:** This abridged life table is constructed from the estimated population in 2011, 2012 and 2013 and the total number of deaths registered in these years. The column headed  $l_x$  shows the numbers who would survive to the exact age of  $x$  out of 100,000 persons who, from birth, were subject to the mortality probabilities indicated by the death records for 2011-2013. Column  $e_x^o$  shows the expectation of life, that is, the average number of years of life left to persons aged exactly  $x$  who are subject to the 2011-2013 mortality probabilities from age  $x$  onwards.

**Table 5: Abridged life table, by sex, age and SIMD2012 deprivation decile, Scotland 2011-2013**

Age x	Scotland <sup>1</sup>				1 (Most Deprived)				2				3				4			
	Males		Females		Males		Females		Males		Females		Males		Females		Males		Females	
	<i>l<sub>x</sub></i>	<i>e<sub>x</sub><sup>o</sup></i>	<i>l<sub>x</sub></i>	<i>e<sub>x</sub><sup>o</sup></i>	<i>l<sub>x</sub></i>	<i>e<sub>x</sub><sup>o</sup></i>	<i>l<sub>x</sub></i>	<i>e<sub>x</sub><sup>o</sup></i>	<i>l<sub>x</sub></i>	<i>e<sub>x</sub><sup>o</sup></i>	<i>l<sub>x</sub></i>	<i>e<sub>x</sub><sup>o</sup></i>	<i>l<sub>x</sub></i>	<i>e<sub>x</sub><sup>o</sup></i>	<i>l<sub>x</sub></i>	<i>e<sub>x</sub><sup>o</sup></i>	<i>l<sub>x</sub></i>	<i>e<sub>x</sub><sup>o</sup></i>	<i>l<sub>x</sub></i>	<i>e<sub>x</sub><sup>o</sup></i>
0	100,000	76.88	100,000	80.97	100,000	69.90	100,000	76.31	100,000	72.97	100,000	78.22	100,000	74.03	100,000	79.16	100,000	75.74	100,000	79.76
1	99,591	76.19	99,685	80.22	99,334	69.37	99,670	75.56	99,483	72.35	99,655	77.49	99,565	73.35	99,462	78.59	99,638	75.02	99,733	78.97
5	99,525	72.24	99,623	76.27	99,252	65.43	99,613	71.60	99,433	68.38	99,571	73.55	99,453	69.43	99,416	74.62	99,571	71.07	99,637	75.05
10	99,472	67.28	99,589	71.30	99,209	60.45	99,569	66.63	99,375	63.42	99,536	68.57	99,403	64.47	99,376	69.65	99,546	66.08	99,583	70.09
15	99,416	62.31	99,553	66.32	99,155	55.48	99,501	61.67	99,327	58.45	99,523	63.58	99,302	59.53	99,336	64.68	99,484	61.12	99,570	65.09
20	99,204	57.44	99,429	61.40	98,849	50.65	99,358	56.76	99,071	53.60	99,405	58.66	99,051	54.67	99,210	59.76	99,285	56.24	99,486	60.15
25	98,869	52.63	99,299	56.48	98,145	45.99	99,143	51.88	98,563	48.86	99,300	53.71	98,623	49.90	99,035	54.86	98,864	51.47	99,317	55.25
30	98,355	47.89	99,078	51.60	97,136	41.45	98,860	47.02	97,840	44.20	98,998	48.87	98,047	45.18	98,831	49.97	98,316	46.74	99,024	50.40
35	97,620	43.23	98,770	46.75	95,678	37.04	98,101	42.36	96,888	39.61	98,658	44.03	96,934	40.67	98,506	45.12	97,596	42.07	98,643	45.59
40	96,677	38.63	98,292	41.97	93,510	32.84	97,072	37.79	95,442	35.17	97,888	39.36	95,614	36.20	97,884	40.40	96,486	37.52	98,145	40.81
45	95,437	34.10	97,628	37.23	90,616	28.81	95,854	33.23	93,340	30.91	96,822	34.76	93,781	31.85	96,879	35.79	95,175	33.01	97,379	36.11
50	93,888	29.62	96,619	32.60	87,231	24.83	93,949	28.86	90,844	26.69	95,394	30.25	91,652	27.54	95,611	31.23	93,340	28.61	96,076	31.56
55	91,695	25.27	94,987	28.11	82,695	21.05	91,045	24.70	87,530	22.61	93,134	25.92	88,675	23.38	93,459	26.89	91,054	24.26	94,313	27.11
60	88,241	21.16	92,643	23.76	76,491	17.56	86,983	20.73	82,850	18.74	89,938	21.75	83,649	19.63	90,550	22.68	87,183	20.23	91,511	22.86
65	83,211	17.29	89,093	19.61	68,328	14.36	81,086	17.06	75,833	15.25	84,834	17.91	77,535	15.98	86,231	18.69	81,418	16.48	87,342	18.83
70	75,815	13.73	83,720	15.71	58,399	11.38	73,133	13.64	65,744	12.20	77,272	14.42	68,225	12.82	79,543	15.05	73,296	13.03	81,075	15.09
75	64,755	10.65	75,241	12.20	45,250	8.95	61,804	10.69	52,693	9.61	66,826	11.28	55,805	10.12	69,637	11.83	61,579	10.04	71,296	11.82
80	50,469	7.95	62,832	9.11	31,126	6.88	47,026	8.26	37,800	7.40	53,116	8.55	41,660	7.71	56,427	9.02	46,633	7.45	58,589	8.84
85	32,900	5.87	45,689	6.59	17,679	5.22	31,316	6.15	23,004	5.56	36,862	6.21	25,900	5.87	40,196	6.65	28,940	5.48	41,192	6.52

**Table 5 (continued)**

Age x	5				6				7				8				9			
	Males		Females		Males		Females		Males		Females		Males		Females		Males		Females	
	<i>l<sub>x</sub></i>	<i>e<sub>x</sub><sup>o</sup></i>	<i>l<sub>x</sub></i>	<i>e<sub>x</sub><sup>o</sup></i>	<i>l<sub>x</sub></i>	<i>e<sub>x</sub><sup>o</sup></i>	<i>l<sub>x</sub></i>	<i>e<sub>x</sub><sup>o</sup></i>	<i>l<sub>x</sub></i>	<i>e<sub>x</sub><sup>o</sup></i>	<i>l<sub>x</sub></i>	<i>e<sub>x</sub><sup>o</sup></i>	<i>l<sub>x</sub></i>	<i>e<sub>x</sub><sup>o</sup></i>	<i>l<sub>x</sub></i>	<i>e<sub>x</sub><sup>o</sup></i>	<i>l<sub>x</sub></i>	<i>e<sub>x</sub><sup>o</sup></i>	<i>l<sub>x</sub></i>	<i>e<sub>x</sub><sup>o</sup></i>
0	100,000	76.73	100,000	81.14	100,000	77.99	100,000	81.80	100,000	79.20	100,000	82.36	100,000	79.88	100,000	83.14	100,000	80.93	100,000	83.33
1	99,582	76.05	99,602	80.46	99,692	77.23	99,804	80.96	99,771	78.38	99,845	81.49	99,645	79.16	99,760	82.34	99,591	80.26	99,658	82.62
5	99,503	72.11	99,531	76.52	99,646	73.26	99,768	76.99	99,738	74.40	99,788	77.53	99,599	75.20	99,724	78.37	99,521	76.32	99,551	78.70
10	99,454	67.14	99,519	71.53	99,610	68.29	99,718	72.03	99,704	69.43	99,741	72.57	99,462	70.30	99,712	73.38	99,477	71.35	99,527	73.72
15	99,382	62.19	99,480	66.55	99,540	63.34	99,656	67.07	99,682	64.44	99,684	67.61	99,441	65.31	99,678	68.40	99,413	66.40	99,493	68.75
20	99,107	57.36	99,350	61.64	99,329	58.46	99,493	62.18	99,510	59.55	99,543	62.70	99,261	60.43	99,604	63.45	99,222	61.52	99,376	63.83
25	98,765	52.55	99,252	56.70	99,093	53.60	99,338	57.27	99,233	54.71	99,391	57.79	99,082	55.53	99,516	58.50	99,092	56.60	99,293	58.88
30	98,346	47.76	99,039	51.81	98,628	48.84	99,141	52.38	98,870	49.90	99,189	52.91	98,770	50.70	99,357	53.59	98,755	51.78	99,123	53.97
35	97,645	43.08	98,745	46.96	97,977	44.15	98,973	47.46	98,388	45.13	98,997	48.00	98,479	45.84	99,178	48.68	98,285	47.02	98,900	49.09
40	96,859	38.41	98,289	42.17	97,261	39.45	98,634	42.62	97,691	40.44	98,705	43.14	97,915	41.09	98,903	43.81	97,953	42.17	98,614	44.22
45	95,596	33.89	97,706	37.40	96,282	34.83	98,065	37.85	96,976	35.72	98,217	38.34	97,274	36.35	98,482	38.99	97,508	37.35	98,242	39.38
50	94,248	29.34	96,789	32.73	95,231	30.19	97,192	33.17	95,907	31.09	97,409	33.64	96,346	31.67	97,751	34.26	96,700	32.64	97,736	34.57
55	92,188	24.94	95,075	28.28	93,167	25.80	95,808	28.61	94,327	26.56	96,081	29.07	94,852	27.13	96,590	29.64	95,731	27.94	96,793	29.89
60	88,935	20.76	92,907	23.88	90,028	21.61	93,645	24.21	91,731	22.25	94,151	24.61	92,291	22.82	94,967	25.11	93,761	23.48	95,019	25.40
65	83,748	16.89	89,564	19.68	85,453	17.63	90,524	19.96	87,644	18.17	91,233	20.32	88,559	18.67	92,400	20.74	90,475	19.24	92,351	21.06
70	75,910	13.37	84,100	15.79	78,438	13.99	85,659	15.95	81,256	14.40	86,844	16.22	82,989	14.76	88,298	16.58	85,399	15.24	88,527	16.86
75	64,613	10.28	75,187	12.37	67,853	10.78	78,164	12.24	71,044	11.11	79,921	12.41	74,077	11.23	81,468	12.76	76,523	11.71	82,401	12.93
80	49,889	7.57	63,227	9.24	53,561	7.99	66,025	9.03	57,258	8.18	68,050	9.14	60,655	8.16	70,837	9.30	63,198	8.66	71,589	9.50
85	31,598	5.50	45,590	6.84	35,359	5.82	47,961	6.49	38,666	5.91	50,006	6.53	41,091	5.86	53,430	6.52	44,028	6.34	54,750	6.66

**Table 5: Abridged life table, by sex, age and SIMD2012 deprivation decile, Scotland 2011-2013 (continued)**

Age x	10 (Least Deprived)			
	Males		Females	
	$l_x$	$e_x^o$	$l_x$	$e_x^o$
0	100,000	82.39	100,000	84.77
1	99,761	81.58	99,708	84.02
5	99,683	77.65	99,681	80.05
10	99,634	72.68	99,655	75.07
15	99,577	67.72	99,655	70.07
20	99,482	62.79	99,515	65.16
25	99,357	57.86	99,465	60.19
30	99,155	52.97	99,353	55.26
35	98,901	48.10	99,256	50.31
40	98,637	43.23	99,016	45.42
45	98,212	38.40	98,751	40.54
50	97,486	33.67	98,197	35.75
55	96,462	29.00	97,169	31.11
60	94,626	24.52	95,850	26.50
65	91,662	20.23	93,633	22.07
70	86,945	16.19	90,314	17.79
75	78,825	12.60	84,449	13.85
80	66,691	9.44	74,942	10.29
85	48,490	7.04	59,517	7.31

[Footnote 1] Please note that the Scotland-level life expectancy estimate shown here is for use only as a comparator for the corresponding sub-Scotland-level figures. The definitive Scotland-level life expectancy estimate (based on national life tables) is published by the Office for National Statistics:

[National Statistics Online - National Life tables](#)

**Note:** This abridged life table is constructed from the estimated population in 2011, 2012 and 2013 and the total number of deaths registered in these years. The column headed  $l_x$  shows the numbers who would survive to the exact age of  $x$  out of 100,000 persons who, from birth, were subject to the mortality probabilities indicated by the death records for 2011-2013. Column  $e_x^o$  shows the expectation of life, that is, the average number of years of life left to persons aged exactly  $x$  who are subject to the 2011-2013 mortality probabilities from age  $x$  onwards.



**Table 6: Life expectancy at birth in Scotland, 2011-2013, by Council and NHS Board area<sup>1</sup> and comparisons with 2001-2003 and 2006-2008 (Males)**

	2011-2013	2006-2008	2001-2003	2011-2013	2006-2008	2001-2003	Change over 5 years (Years)	Change over 10 years (Years)	Change over 5 years (%)	Change over 10 years (%)
	Years <sup>2</sup>	Years <sup>2</sup>	Years <sup>2</sup>	Rank	Rank	Rank				
<b>Scotland<sup>3</sup></b>	<b>76.9</b>	<b>75.1</b>	<b>73.5</b>	<b>-</b>	<b>-</b>	<b>-</b>	<b>1.8</b>	<b>3.4</b>	<b>2.4</b>	<b>4.6</b>
<b>Council areas</b>										
Aberdeen City	77.1	75.4	74.1	21	18	17	1.7	3.0	2.3	4.0
Aberdeenshire	79.2	77.5	76.1	5	3	2	1.7	3.1	2.2	4.1
Angus	78.5	77.0	75.3	9	7	9	1.5	3.2	2.0	4.3
Argyll & Bute	78.2	76.1	74.7	10	13	12	2.1	3.5	2.8	4.6
Clackmannanshire	77.0	74.6	73.5	22	23	22	2.5	3.5	3.3	4.7
Dumfries & Galloway	78.0	76.5	74.8	11	10	10	1.5	3.2	2.0	4.3
Dundee City	75.1	73.6	71.9	28	28	26	1.5	3.2	2.0	4.4
East Ayrshire	75.8	74.6	72.6	26	22	25	1.2	3.2	1.6	4.4
East Dunbartonshire	80.5	78.1	77.1	1	1	1	2.4	3.4	3.1	4.4
East Lothian	78.5	76.7	75.6	8	8	6	1.8	2.9	2.4	3.8
East Renfrewshire	79.7	77.5	76.0	2	2	4	2.1	3.7	2.7	4.8
Edinburgh, City of	77.6	76.3	74.8	16	12	11	1.3	2.8	1.7	3.7
Eilean Siar	77.2	73.9	71.7	20	26	29	3.3	5.4	4.5	7.6
Falkirk	76.8	75.2	73.8	23	19	20	1.6	3.0	2.1	4.1
Fife	77.2	75.9	74.6	19	16	14	1.3	2.6	1.7	3.5
Glasgow City	73.0	70.7	69.1	32	32	32	2.3	4.0	3.2	5.7
Highland	77.7	76.1	74.4	15	14	15	1.6	3.2	2.1	4.4
Inverclyde	74.7	73.0	70.2	30	30	31	1.7	4.5	2.3	6.4
Midlothian	77.3	76.4	74.7	18	11	13	0.8	2.6	1.1	3.4
Moray	77.9	76.6	74.2	12	9	16	1.3	3.7	1.8	5.0
North Ayrshire	75.9	74.0	72.7	25	25	24	2.0	3.3	2.7	4.5
North Lanarkshire	75.1	73.2	71.9	29	29	27	1.8	3.1	2.5	4.4
Orkney Islands	78.8	75.0	75.9	6	20	5	3.8	2.8	5.1	3.7
Perth & Kinross	79.3	77.4	76.0	4	4	3	1.9	3.3	2.4	4.3
Renfrewshire	75.7	73.7	71.9	27	27	28	2.0	3.8	2.7	5.3
Scottish Borders	79.3	77.3	75.4	3	5	8	2.0	3.8	2.6	5.1
Shetland Islands	77.9	74.9	73.5	13	21	21	3.0	4.3	4.0	5.9
South Ayrshire	77.7	75.5	74.0	14	17	18	2.2	3.7	2.9	5.0
South Lanarkshire	76.5	74.5	74.0	24	24	19	2.0	2.5	2.7	3.4
Stirling	78.5	77.2	75.5	7	6	7	1.4	3.0	1.8	4.0
West Dunbartonshire	74.2	72.1	70.8	31	31	30	2.0	3.4	2.8	4.8
West Lothian	77.5	75.9	73.5	17	15	23	1.6	4.1	2.1	5.5
<b>NHS Board areas</b>										
Ayrshire & Arran	76.4	74.7	73.1	12	11	11	1.8	3.4	2.4	4.6
Borders	79.3	77.3	75.4	1	1	2	2.0	3.8	2.6	5.1
Dumfries & Galloway	78.0	76.5	74.8	4	3	4	1.5	3.2	2.0	4.3
Fife	77.2	75.9	74.6	10	7	6	1.3	2.6	1.7	3.5
Forth Valley	77.3	75.7	74.2	9	8	9	1.7	3.1	2.2	4.2
Grampian	78.3	76.6	75.0	3	2	3	1.7	3.3	2.2	4.3
Greater Glasgow & Clyde	74.9	72.7	71.0	14	14	14	2.2	4.0	3.0	5.6
Highland	77.8	76.1	74.5	6	5	7	1.7	3.3	2.3	4.4
Lanarkshire	75.8	73.8	72.9	13	13	12	1.9	2.9	2.6	3.9
Lothian	77.7	76.3	74.7	7	4	5	1.4	3.0	1.8	4.0
Orkney	78.8	75.0	75.9	2	9	1	3.8	2.8	5.1	3.7
Shetland	77.9	74.9	73.5	5	10	10	3.0	4.3	4.0	5.9
Tayside	77.6	76.0	74.3	8	6	8	1.7	3.3	2.2	4.4
Western Isles	77.2	73.9	71.7	11	12	13	3.3	5.4	4.5	7.6

**Footnotes**

1) 2014 NHS Board areas.

2) The results may vary from year to year, particularly those based on small populations.

3) Please note that the Scotland-level life expectancy estimate shown here is for use only as a comparator for the corresponding sub-Scotland-level figures. The definitive Scotland-level life expectancy estimate (based on national life tables) is published by the Office for National Statistics:

[National Statistics Online - National Life tables](#)

**Table 7: Life expectancy at birth in Scotland, 2011-2013, by Council and NHS Board area<sup>1</sup> and comparisons with 2001-2003 and 2006-2008 (Females)**

	2011-2013	2006-2008	2001-2003	2011-2013	2006-2008	2001-2003	Change over 5 years (Years)	Change over 10 years (Years)	Change over 5 years (%)	Change over 10 years (%)
	Years <sup>2</sup>	Years <sup>2</sup>	Years <sup>2</sup>	Rank	Rank	Rank				
<b>Scotland<sup>3</sup></b>	<b>81.0</b>	<b>79.9</b>	<b>78.8</b>	<b>-</b>	<b>-</b>	<b>-</b>	<b>1.1</b>	<b>2.1</b>	<b>1.3</b>	<b>2.7</b>
<b>Council areas</b>										
Aberdeen City	81.4	80.4	80.0	17	19	10	1.0	1.4	1.2	1.7
Aberdeenshire	82.2	81.1	80.7	9	10	3	1.0	1.4	1.3	1.8
Angus	81.6	80.9	79.9	14	14	11	0.7	1.6	0.8	2.0
Argyll & Bute	81.5	79.8	79.6	16	21	15	1.6	1.9	2.1	2.3
Clackmannanshire	79.9	80.5	78.7	27	18	20	-0.6	1.2	-0.7	1.6
Dumfries & Galloway	81.5	80.5	79.7	15	16	13	1.0	1.9	1.2	2.3
Dundee City	79.7	79.5	77.7	28	22	28	0.2	2.0	0.2	2.6
East Ayrshire	79.7	78.4	77.9	29	30	26	1.3	1.8	1.6	2.3
East Dunbartonshire	83.9	82.4	80.4	1	1	5	1.4	3.4	1.7	4.2
East Lothian	81.6	81.3	80.1	13	7	7	0.3	1.5	0.4	1.9
East Renfrewshire	83.0	82.0	81.1	2	2	1	1.0	1.9	1.2	2.3
Edinburgh, City of	81.9	81.2	80.1	10	9	8	0.8	1.9	1.0	2.3
Eilean Siar	80.4	81.6	79.6	25	4	14	-1.2	0.8	-1.4	1.0
Falkirk	80.7	79.5	78.6	22	23	22	1.1	2.1	1.4	2.7
Fife	81.2	80.2	79.4	18	20	17	1.0	1.8	1.3	2.3
Glasgow City	78.5	77.2	76.4	32	32	32	1.4	2.1	1.8	2.8
Highland	82.2	80.9	79.4	7	12	16	1.3	2.8	1.6	3.6
Inverclyde	80.7	78.7	77.8	21	28	27	2.0	2.9	2.6	3.8
Midlothian	81.7	80.5	78.6	11	17	21	1.2	3.1	1.5	4.0
Moray	81.7	80.7	80.1	12	15	6	1.0	1.5	1.2	1.9
North Ayrshire	81.0	79.1	78.5	19	26	24	1.9	2.5	2.4	3.2
North Lanarkshire	79.4	78.4	77.4	30	29	31	1.0	2.0	1.2	2.6
Orkney Islands	82.5	81.6	81.0	4	3	2	0.9	1.5	1.1	1.9
Perth & Kinross	82.8	81.4	80.0	3	6	9	1.3	2.8	1.6	3.5
Renfrewshire	80.6	78.9	78.1	24	27	25	1.7	2.5	2.1	3.2
Scottish Borders	82.4	81.0	79.8	6	11	12	1.4	2.6	1.7	3.3
Shetland Islands	82.5	81.5	80.6	5	5	4	1.0	1.9	1.2	2.3
South Ayrshire	80.9	80.9	79.2	20	13	19	0.0	1.7	0.0	2.2
South Lanarkshire	80.7	79.5	78.5	23	24	23	1.1	2.1	1.4	2.7
Stirling	82.2	81.2	79.3	8	8	18	1.0	2.9	1.2	3.7
West Dunbartonshire	79.1	78.1	77.4	31	31	30	1.0	1.7	1.3	2.1
West Lothian	80.2	79.2	77.7	26	25	29	1.0	2.6	1.3	3.3
<b>NHS Board areas</b>										
Ayrshire & Arran	80.5	79.4	78.5	11	12	12	1.1	2.0	1.4	2.6
Borders	82.4	81.0	79.8	3	4	4	1.4	2.6	1.7	3.3
Dumfries & Galloway	81.5	80.5	79.7	7	9	5	1.0	1.9	1.2	2.3
Fife	81.2	80.2	79.4	9	11	9	1.0	1.8	1.3	2.3
Forth Valley	81.0	80.2	78.8	10	10	11	0.8	2.2	1.0	2.8
Grampian	81.8	80.8	80.4	5	5	3	1.0	1.4	1.2	1.8
Greater Glasgow & Clyde	80.0	78.5	77.6	14	14	14	1.4	2.3	1.8	3.0
Highland	82.0	80.6	79.5	4	8	8	1.4	2.5	1.7	3.2
Lanarkshire	80.0	79.0	77.9	13	13	13	1.0	2.1	1.3	2.7
Lothian	81.6	80.8	79.5	6	6	7	0.8	2.1	1.0	2.6
Orkney	82.5	81.6	81.0	1	1	1	0.9	1.5	1.1	1.9
Shetland	82.5	81.5	80.6	2	3	2	1.0	1.9	1.2	2.3
Tayside	81.4	80.6	79.2	8	7	10	0.7	2.2	0.9	2.8
Western Isles	80.4	81.6	79.6	12	2	6	-1.2	0.8	-1.4	1.0

**Footnotes**

1) 2014 NHS Board areas.

2) The results may vary from year to year, particularly those based on small populations.

3) Please note that the Scotland-level life expectancy estimate shown here is for use only as a comparator for the corresponding sub-Scotland-level figures. The definitive Scotland-level life expectancy estimate (based on national life tables) is published by the Office for National Statistics:

[National Statistics Online - National Life tables](#)

**Table 8: Life expectancy at birth in Scotland, 2011-2013, by Community Health Partnership area and comparisons with 2001-2003 and 2006-2008 (Males)**

	2011-2013	2006-2008	2001-2003	2011-2013	2006-2008	2001-2003	Change over 5 years (Years)	Change over 10 years (Years)	Change over 5 years (%)	Change over 10 years (%)
	Years <sup>1</sup>	Years <sup>1</sup>	Years <sup>1</sup>	Rank	Rank	Rank				
<b>Scotland<sup>4</sup></b>	<b>76.9</b>	<b>75.1</b>	<b>73.5</b>	<b>-</b>	<b>-</b>	<b>-</b>	<b>1.8</b>	<b>3.4</b>	<b>2.4</b>	<b>4.6</b>
<b>Community Health Partnership</b>										
Aberdeen City	77.1	75.4	74.1	21	19	18	1.7	3.0	2.3	4.0
Aberdeenshire	79.2	77.5	76.1	5	3	2	1.7	3.1	2.2	4.1
Angus	78.5	77.0	75.3	9	8	10	1.5	3.2	2.0	4.3
Argyll & Bute	78.2	76.1	74.7	11	14	13	2.1	3.5	2.8	4.6
Clackmannanshire	77.0	74.6	73.5	22	24	23	2.5	3.5	3.3	4.7
Dumfries & Galloway	78.0	76.5	74.8	12	11	11	1.5	3.2	2.0	4.3
Dundee	75.1	73.6	71.9	30	30	29	1.5	3.2	2.0	4.4
Dunfermline & West Fife	76.8	75.8	74.2	23	17	16	1.0	2.6	1.3	3.6
East Ayrshire	75.8	74.6	72.5	28	23	27	1.2	3.2	1.6	4.4
East Dunbartonshire	80.5	78.1	77.1	1	1	1	2.4	3.4	3.1	4.4
East Lothian	78.5	76.7	75.6	8	9	7	1.8	2.9	2.4	3.8
East Renfrewshire <sup>2</sup>	79.7	77.5	76.0	2	2	5	2.1	3.7	2.7	4.8
Edinburgh	77.6	76.3	74.8	17	13	12	1.3	2.8	1.7	3.7
Falkirk	76.8	75.2	73.8	24	20	21	1.6	3.0	2.1	4.1
Glasgow City	73.0	70.7	69.1	34	34	34	2.3	4.0	3.2	5.7
Glenrothes & North East Fife	78.4	77.4	76.0	10	5	3	1.0	2.3	1.3	3.1
Highland <sup>3</sup>	77.7	76.1	74.4	16	15	15	1.6	3.3	2.1	4.4
Inverclyde <sup>2</sup>	74.7	73.0	70.2	32	32	33	1.7	4.5	2.3	6.4
Kirkcaldy & Levenmouth	76.2	74.1	73.3	26	26	25	2.0	2.9	2.8	3.9
Midlothian	77.3	76.4	74.7	19	12	14	0.8	2.6	1.1	3.4
Moray <sup>3</sup>	77.9	76.6	74.2	13	10	17	1.3	3.7	1.8	5.0
North Ayrshire	75.9	74.0	72.7	27	27	26	2.0	3.3	2.7	4.5
North Lanarkshire	75.1	73.2	71.9	31	31	28	1.8	3.1	2.5	4.4
Orkney	78.8	75.0	75.9	6	21	6	3.8	2.8	5.1	3.7
Perth & Kinross	79.3	77.4	76.0	4	4	4	1.9	3.2	2.4	4.3
Renfrewshire	75.7	73.7	71.9	29	29	30	2.0	3.8	2.7	5.3
Scottish Borders <sup>2</sup>	79.3	77.3	75.4	3	6	9	2.0	3.8	2.6	5.1
Shetland	77.9	74.9	73.5	14	22	22	3.0	4.3	4.0	5.9
South Ayrshire	77.7	75.5	74.0	15	18	19	2.2	3.7	2.9	5.0
South Lanarkshire	76.5	74.5	74.0	25	25	20	2.0	2.5	2.7	3.4
Stirling	78.5	77.2	75.5	7	7	8	1.4	3.0	1.8	4.0
West Dunbartonshire <sup>2</sup>	74.2	72.1	70.8	33	33	32	2.0	3.4	2.8	4.8
West Lothian <sup>2</sup>	77.5	75.9	73.5	18	16	24	1.6	4.1	2.1	5.5
Western Isles <sup>3</sup>	77.2	73.9	71.7	20	28	31	3.3	5.4	4.5	7.6

**Footnotes**

- 1) The results may vary from year to year, particularly those based on small populations.
- 2) Known as Community Health and Care Partnership.
- 3) Known as Community Health and Social Care Partnership.
- 4) Please note that the Scotland-level life expectancy estimate shown here is for use only as a comparator for the corresponding sub-Scotland-level figures. The definitive Scotland-level life expectancy estimate (based on national life tables) is published by the Office for National Statistics: [National Statistics Online - National Life tables](http://www.nationalstatistics.gov.uk)

**Table 9: Life expectancy at birth in Scotland, 2011-2013, by Community Health Partnership area and comparisons with 2001-2003 and 2006-2008 (Females)**

	2011-2013	2006-2008	2001-2003	2011-2013	2006-2008	2001-2003	Change over 5 years (Years)	Change over 10 years (Years)	Change over 5 years (%)	Change over 10 years (%)
	Years <sup>1</sup>	Years <sup>1</sup>	Years <sup>1</sup>	Rank	Rank	Rank				
<b>Scotland<sup>4</sup></b>	<b>81.0</b>	<b>79.9</b>	<b>78.8</b>	<b>-</b>	<b>-</b>	<b>-</b>	<b>1.1</b>	<b>2.1</b>	<b>1.3</b>	<b>2.7</b>
<b>Community Health Partnership</b>										
Aberdeen City	81.4	80.4	80.0	18	20	11	1.0	1.4	1.2	1.7
Aberdeenshire	82.2	81.1	80.7	9	10	3	1.0	1.4	1.3	1.8
Angus	81.6	80.9	79.9	15	14	12	0.7	1.6	0.8	2.0
Argyll & Bute	81.5	79.8	79.6	17	22	16	1.6	1.9	2.1	2.3
Clackmannanshire	79.9	80.5	78.7	29	19	21	-0.6	1.2	-0.7	1.6
Dumfries & Galloway	81.5	80.5	79.7	16	17	14	1.0	1.9	1.2	2.3
Dundee	79.7	79.5	77.7	30	23	30	0.2	2.0	0.2	2.6
Dunfermline & West Fife	81.3	80.1	78.3	19	21	26	1.2	3.0	1.5	3.9
East Ayrshire	79.7	78.4	77.9	31	32	28	1.3	1.8	1.6	2.3
East Dunbartonshire	83.9	82.4	80.4	1	1	6	1.4	3.4	1.7	4.2
East Lothian	81.6	81.3	80.1	14	7	8	0.3	1.5	0.4	1.9
East Renfrewshire <sup>2</sup>	83.0	82.0	81.1	2	2	1	1.0	1.9	1.2	2.3
Edinburgh	81.9	81.2	80.1	10	9	9	0.8	1.9	1.0	2.3
Falkirk	80.7	79.5	78.6	23	24	23	1.1	2.1	1.4	2.7
Glasgow City	78.5	77.2	76.4	34	34	34	1.4	2.1	1.8	2.8
Glenrothes & North East Fife	81.7	80.8	80.5	12	15	5	0.9	1.2	1.1	1.5
Highland <sup>3</sup>	82.2	80.9	79.4	7	12	18	1.3	2.8	1.6	3.6
Inverclyde <sup>2</sup>	80.7	78.7	77.8	22	30	29	2.0	2.9	2.6	3.8
Kirkcaldy & Levenmouth	80.4	79.4	79.4	27	26	17	0.9	1.0	1.2	1.2
Midlothian	81.7	80.5	78.6	11	18	22	1.2	3.1	1.5	4.0
Moray <sup>3</sup>	81.7	80.7	80.1	13	16	7	1.0	1.5	1.2	1.9
North Ayrshire	81.0	79.1	78.5	20	28	25	1.9	2.5	2.4	3.2
North Lanarkshire	79.4	78.4	77.4	32	31	33	1.0	2.0	1.2	2.6
Orkney	82.5	81.6	81.0	4	3	2	0.9	1.5	1.1	1.9
Perth & Kinross	82.8	81.4	80.0	3	6	10	1.3	2.8	1.6	3.5
Renfrewshire	80.6	78.9	78.1	25	29	27	1.7	2.5	2.1	3.2
Scottish Borders <sup>2</sup>	82.4	81.0	79.8	6	11	13	1.4	2.6	1.7	3.3
Shetland	82.5	81.5	80.6	5	5	4	1.0	1.9	1.2	2.3
South Ayrshire	80.9	80.9	79.2	21	13	20	0.0	1.7	0.0	2.2
South Lanarkshire	80.7	79.5	78.5	24	25	24	1.1	2.1	1.4	2.7
Stirling	82.2	81.2	79.3	8	8	19	1.0	2.9	1.2	3.7
West Dunbartonshire <sup>2</sup>	79.1	78.1	77.4	33	33	32	1.0	1.7	1.3	2.1
West Lothian <sup>2</sup>	80.2	79.2	77.7	28	27	31	1.0	2.6	1.3	3.3
Western Isles <sup>3</sup>	80.4	81.6	79.6	26	4	15	-1.2	0.8	-1.4	1.0

**Footnotes**

- 1) The results may vary from year to year, particularly those based on small populations.
- 2) Known as Community Health and Care Partnership.
- 3) Known as Community Health and Social Care Partnership.
- 4) Please note that the Scotland-level life expectancy estimate shown here is for use only as a comparator for the corresponding sub-Scotland-level figures. The definitive Scotland-level life expectancy estimate (based on national life tables) is published by the Office for National Statistics: [National Statistics Online - National Life tables](http://www.nationalstatistics.gov.uk)

**Table 10: Life expectancy at age 65 in Scotland, 2011-2013, by Council and NHS Board area<sup>1</sup> (Males and Females)**

	Males Years <sup>2</sup>	Rank	Females Years <sup>2</sup>	Rank
<b>Scotland<sup>3</sup></b>	<b>17.3</b>	<b>-</b>	<b>19.6</b>	<b>-</b>
<b>Council areas</b>				
Aberdeen City	17.3	20	19.9	17
Aberdeenshire	18.3	7	20.2	11
Angus	18.2	11	20.3	8
Argyll & Bute	18.0	12	20.3	10
Clackmannanshire	16.8	24	19.0	27
Dumfries & Galloway	18.2	9	19.9	15
Dundee City	16.6	28	19.3	24
East Ayrshire	17.1	22	18.8	29
East Dunbartonshire	19.4	1	21.5	1
East Lothian	18.2	8	20.1	13
East Renfrewshire	19.0	2	21.0	2
Edinburgh, City of	17.9	15	20.3	9
Eilean Siar	17.1	21	19.9	16
Falkirk	16.8	25	19.3	22
Fife	17.4	18	19.7	20
Glasgow City	15.0	32	18.2	32
Highland	18.2	10	20.8	5
Inverclyde	16.0	30	19.3	23
Midlothian	17.5	17	19.7	19
Moray	17.9	14	20.0	14
North Ayrshire	17.0	23	19.4	21
North Lanarkshire	16.2	29	18.3	31
Orkney Islands	18.7	3	20.2	12
Perth & Kinross	18.5	5	20.8	3
Renfrewshire	16.8	26	19.0	26
Scottish Borders	18.6	4	20.6	6
Shetland Islands	18.5	6	20.8	4
South Ayrshire	17.6	16	19.7	18
South Lanarkshire	16.8	27	19.1	25
Stirling	18.0	13	20.5	7
West Dunbartonshire	15.7	31	18.3	30
West Lothian	17.4	19	18.9	28
<b>NHS Board areas</b>				
Ayrshire & Arran	17.2	10	19.3	12
Borders	18.6	2	20.6	2
Dumfries & Galloway	18.2	4	19.9	7
Fife	17.4	9	19.7	10
Forth Valley	17.2	11	19.6	11
Grampian	17.9	6	20.0	6
Greater Glasgow & Clyde	16.2	14	19.0	13
Highland	18.1	5	20.6	3
Lanarkshire	16.5	13	18.7	14
Lothian	17.8	8	19.9	9
Orkney	18.7	1	20.2	4
Shetland	18.5	3	20.8	1
Tayside	17.8	7	20.2	5
Western Isles	17.1	12	19.9	8

**Footnotes**

1) 2014 NHS Board areas

2) The results may vary from year to year, particularly those based on small populations.

3) Please note that the Scotland-level life expectancy estimate shown here is for use only as a comparator for the corresponding sub-Scotland-level figures. The definitive Scotland-level life expectancy estimate (based on national life tables) is published by the Office for National Statistics:

[National Statistics Online - National Life tables](#)

**Table 11: Life expectancy at age 65 in Scotland, 2011-2013, by Community Health Partnership area (Males and Females)**

	Males Years <sup>1</sup>	Rank	Females Years <sup>1</sup>	Rank
<b>Scotland<sup>4</sup></b>	<b>17.3</b>	<b>-</b>	<b>19.6</b>	<b>-</b>
<b>Community Health Partnership</b>				
Aberdeen City	17.3	20	19.9	18
Aberdeenshire	18.3	7	20.2	11
Angus	18.2	11	20.3	8
Argyll & Bute	18.0	12	20.3	10
Clackmannanshire	16.8	26	19.0	29
Dumfries & Galloway	18.2	9	19.9	16
Dundee	16.6	30	19.3	26
Dunfermline & West Fife	17.0	25	19.6	21
East Ayrshire	17.1	23	18.8	31
East Dunbartonshire	19.4	1	21.5	1
East Lothian	18.2	8	20.1	13
East Renfrewshire <sup>2</sup>	19.0	2	21.0	2
Edinburgh	17.9	16	20.3	9
Falkirk	16.8	27	19.3	24
Glasgow City	15.0	34	18.2	34
Glenrothes & North East Fife	17.9	14	20.0	14
Highland <sup>3</sup>	18.2	10	20.8	5
Inverclyde <sup>2</sup>	16.0	32	19.3	25
Kirkcaldy & Levenmouth	17.3	21	19.5	22
Midlothian	17.5	18	19.7	20
Moray <sup>3</sup>	17.9	15	20.0	15
North Ayrshire	17.0	24	19.4	23
North Lanarkshire	16.2	31	18.3	33
Orkney	18.7	3	20.2	12
Perth & Kinross	18.5	5	20.8	3
Renfrewshire	16.8	28	19.0	28
Scottish Borders <sup>2</sup>	18.6	4	20.6	6
Shetland	18.5	6	20.8	4
South Ayrshire	17.6	17	19.7	19
South Lanarkshire	16.8	29	19.1	27
Stirling	18.0	13	20.5	7
West Dunbartonshire <sup>2</sup>	15.7	33	18.3	32
West Lothian <sup>2</sup>	17.4	19	18.9	30
Western Isles <sup>3</sup>	17.1	22	19.9	17

**Footnotes**

1) The results may vary from year to year, particularly those based on small populations.

2) Known as Community Health and Care Partnership.

3) Known as Community Health and Social Care Partnership.

4) Please note that the Scotland-level life expectancy estimate shown here is for use only as a comparator for the corresponding sub-Scotland-level figures. The definitive Scotland-level life expectancy estimate (based on national life tables) is published by the Office for National Statistics:

[National Statistics Online - National Life tables](#)

## 10. Notes on statistical publications

### National Statistics

The United Kingdom Statistics Authority (UKSA) has designated these statistics as National Statistics, in line with the Statistics and Registration Service Act 2007 and signifying compliance with the Code of Practice for Official Statistics (available on the [UKSA](#) website).

Designation can be broadly interpreted to mean that the statistics:

- meet identified user needs;
- are well explained and readily accessible;
- are produced according to sound methods; and
- are managed impartially and objectively in the public interest.

Once statistics have been designated as National Statistics it is a statutory requirement that the Code of Practice shall continue to be observed.

### National Records of Scotland

We, the National Records of Scotland, are a non-ministerial department of the devolved Scottish Administration. Our aim is to provide relevant and reliable information, analysis and advice that meets the needs of government, business and the people of Scotland. We do this as follows:

- Preserving the past – We look after Scotland’s national archives so that they are available for current and future generations, and we make available important information for family history.
- Recording the present – At our network of local offices, we register births, marriages, civil partnerships, deaths, divorces and adoptions in Scotland.
- Informing the future – We are responsible for the Census of Population in Scotland which we use, with other sources of information, to produce statistics on the population and households.

You can get other detailed statistics that we have produced from the [Statistics](#) section of our website. Statistics from the 2001 Census are on [Scotland’s Census Results On-Line \(SCROL\)](#) website and the 2011 Census results are held on the [Scotland’s Census](#) website.

We also provide information about [future publications](#) on our website. If you would like us to tell you about future statistical publications, you can register your interest on the Scottish Government [ScotStat website](#).

#### **Please note:**

National Records of Scotland is now on twitter [@NatRecordsScot](#)

## **Enquiries and suggestions**

Please contact our Customer Services if you need any further information.

Email: [customer@gro-scotland.gsi.gov.uk](mailto:customer@gro-scotland.gsi.gov.uk)

If you have comments or suggestions that would help us improve our standards of service, please contact:

Kirsty MacLachlan  
Senior Statistician  
National Records of Scotland  
Room 1/2/3  
Ladywell House  
Ladywell Road  
Edinburgh  
EH12 7TF

Phone: 0131 314 4242

Email: [kirsty.maclachlan@gro-scotland.gsi.gov.uk](mailto:kirsty.maclachlan@gro-scotland.gsi.gov.uk)



## 11. Related organisations

Organisation	Contact
<p>The Scottish Government (SG) forms the bulk of the devolved Scottish Administration. The aim of the statistical service in the SG is to provide relevant and reliable statistical information, analysis and advice that meets the needs of government, business and the people of Scotland.</p>	<p>Office of the Chief Statistician            Scottish Government            3WR, St Andrews House            Edinburgh            EH1 3DG</p> <p>Phone: 0131 244 0442</p> <p>Email: <a href="mailto:statistics.enquiries@scotland.gsi.gov.uk">statistics.enquiries@scotland.gsi.gov.uk</a></p> <p>Website: <a href="http://www.scotland.gov.uk/Topics/Statistics">www.scotland.gov.uk/Topics/Statistics</a></p>
<p>The Office for National Statistics (ONS) is responsible for producing a wide range of economic and social statistics. It also carries out the Census of Population for England and Wales</p>	<p>Customer Contact Centre            Office for National Statistics            Room 1.101            Government Buildings            Cardiff Road            Newport            NP10 8XG</p> <p>Phone: 0845 601 3034            Minicom: 01633 815044</p> <p>Email: <a href="mailto:info@statistics.gsi.gov.uk">info@statistics.gsi.gov.uk</a></p> <p>Website: <a href="http://www.ons.gov.uk/">www.ons.gov.uk/</a></p>
<p>The Northern Ireland Statistics and Research Agency (NISRA) is Northern Ireland's official statistics organisation. The agency is also responsible for registering births, marriages, adoptions and deaths in Northern Ireland, and the Census of Population.</p>	<p>Northern Ireland Statistics and Research Agency            McAuley House            2-14 Castle Street            Belfast            BT1 1SA</p> <p>Phone: 028 9034 8100</p> <p>Email: <a href="mailto:info.nisra@dfpni.gov.uk">info.nisra@dfpni.gov.uk</a></p> <p>Website: <a href="http://www.nisra.gov.uk">www.nisra.gov.uk</a></p>

### © Crown Copyright

You may use or re-use this information (not including logos) free of charge in any format or medium, under the terms of the Open Government Licence. Further information is available within the [Copyright & Disclaimer](#) section of the National Records of Scotland website.