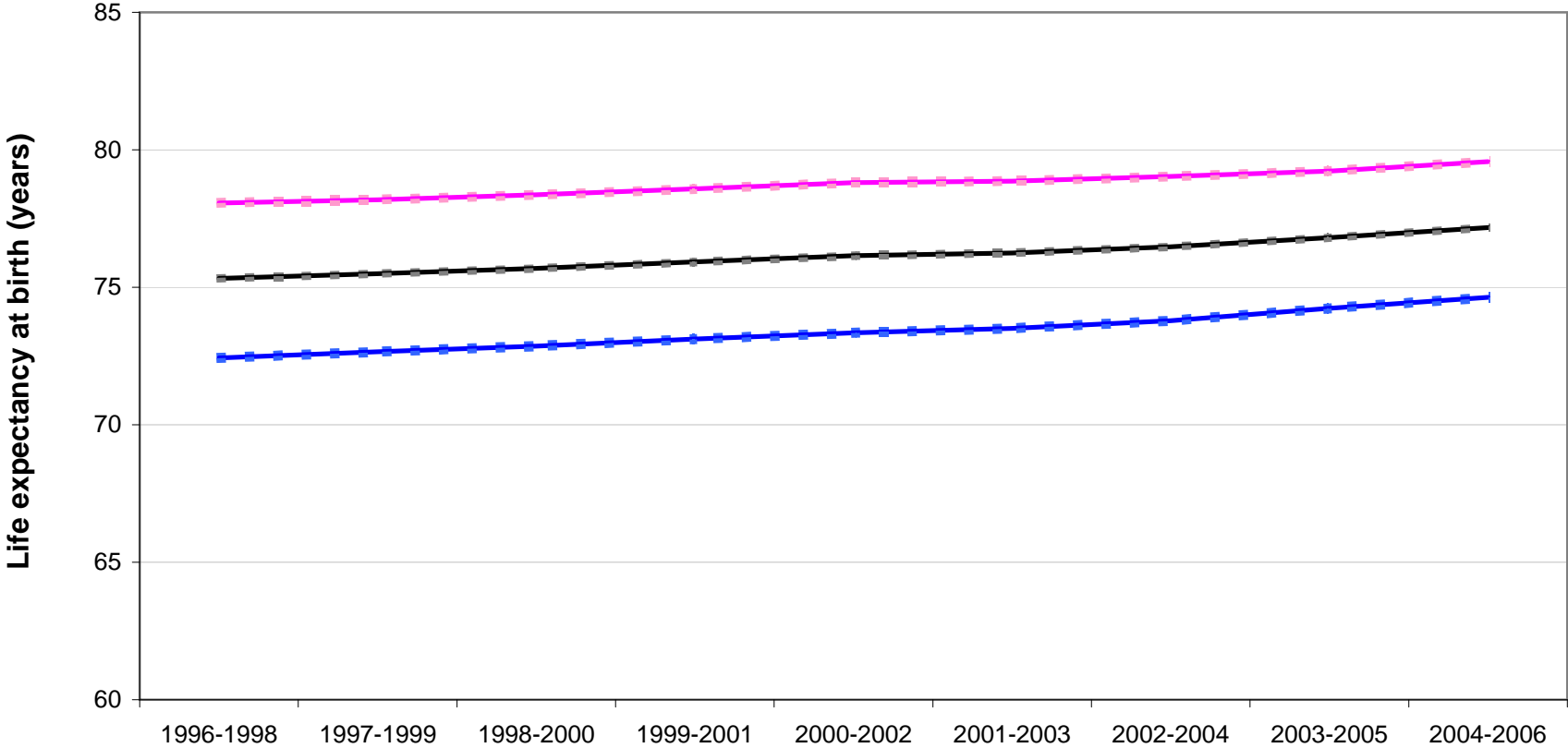


**Life expectancy at birth, with 95% lower and upper confidence intervals, 1996-1998 to 2004-2006
for males, females and all persons in**

Scotland

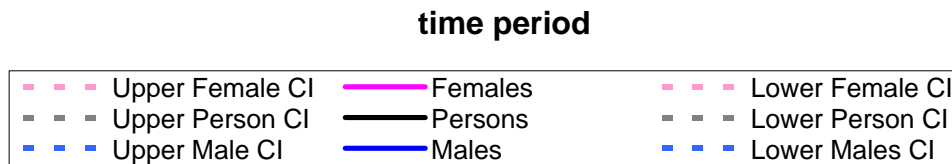
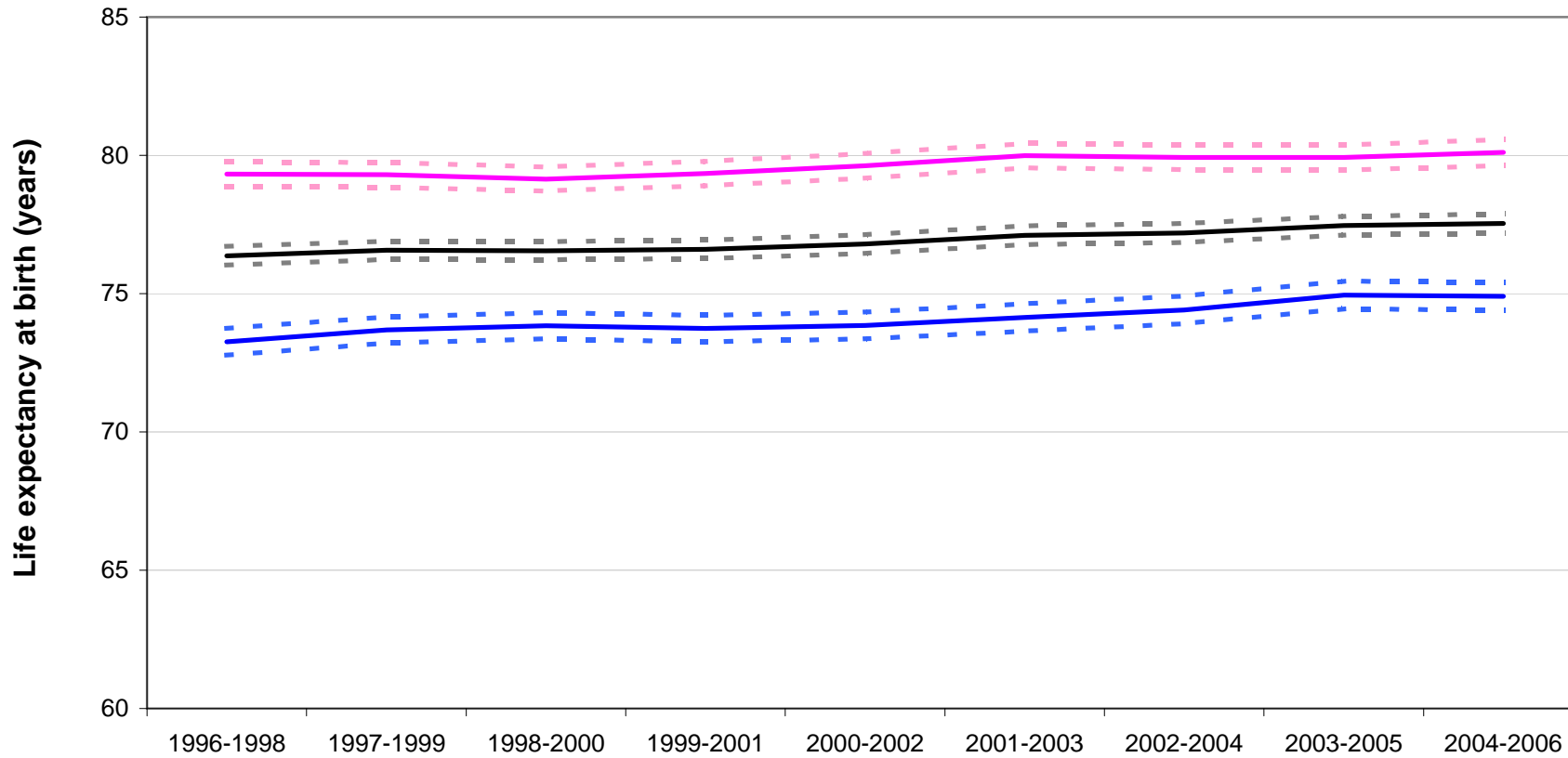


time period



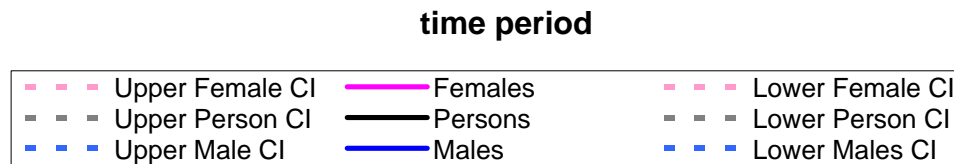
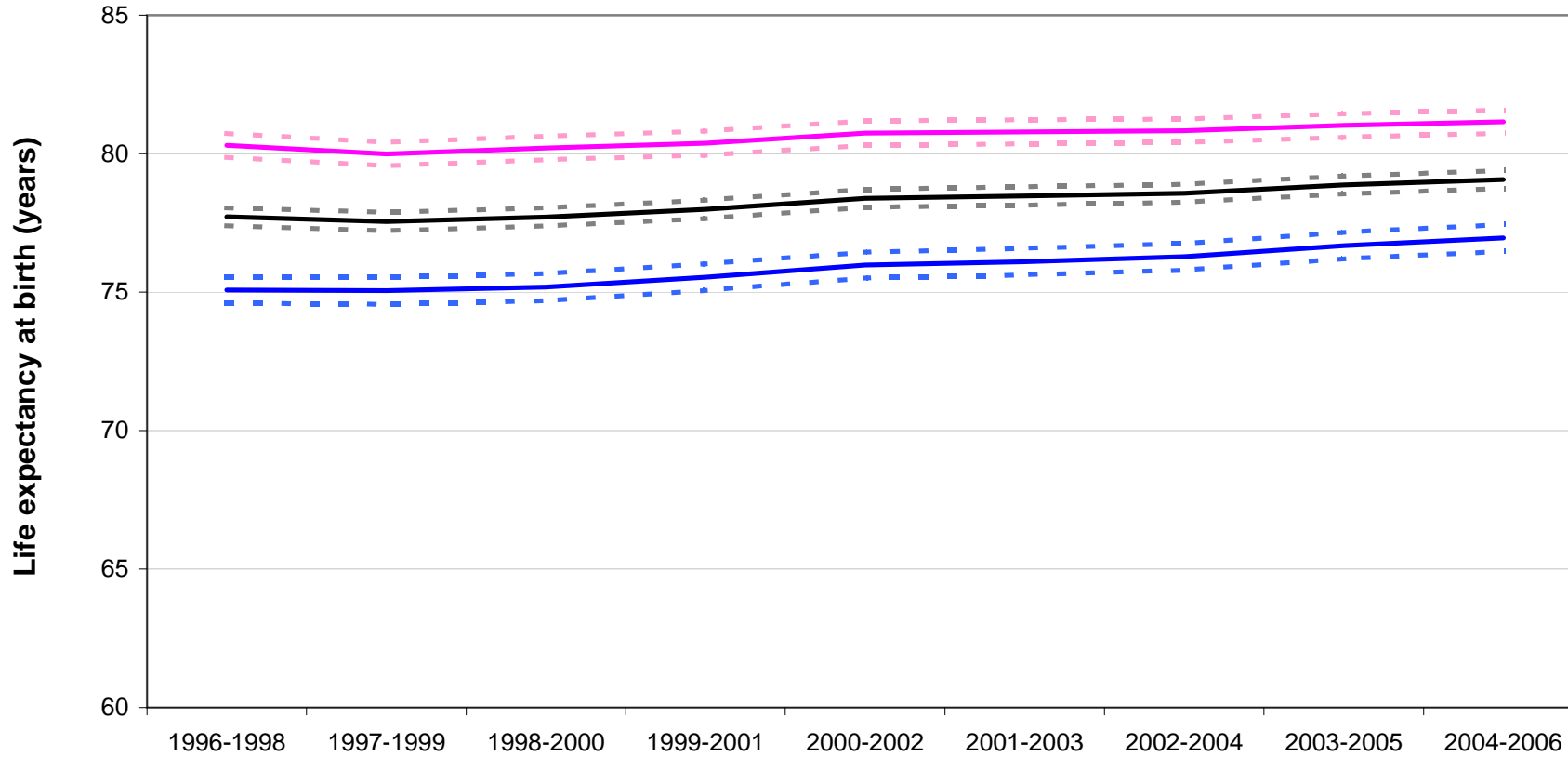
**Life expectancy at birth, with 95% lower and upper confidence intervals, 1996-1998 to 2004-2006
for males, females and all persons in**

Aberdeen City Community Health Partnership



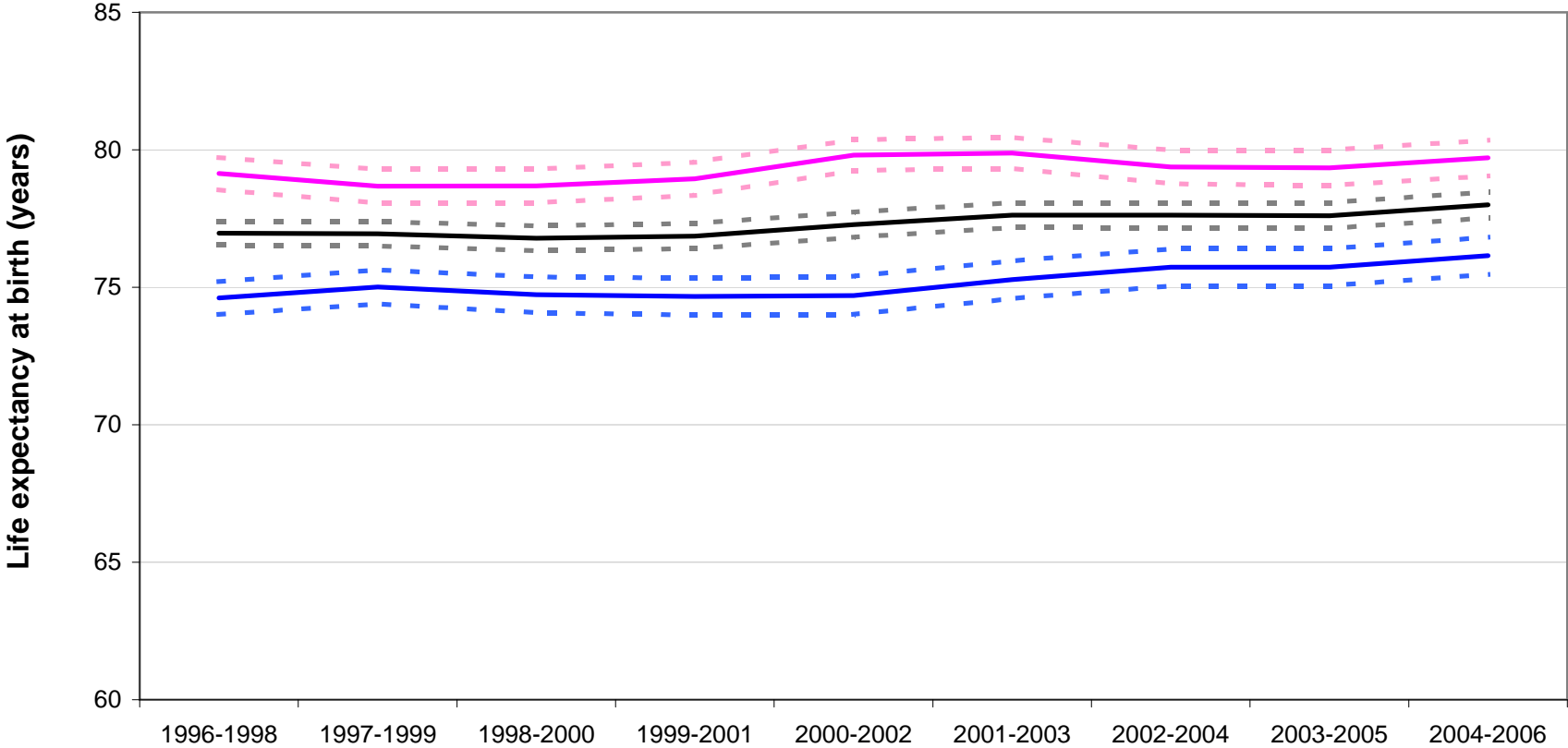
**Life expectancy at birth, with 95% lower and upper confidence intervals, 1996-1998 to 2004-2006
for males, females and all persons in**

Aberdeenshire Community Health Partnership



**Life expectancy at birth, with 95% lower and upper confidence intervals, 1996-1998 to 2004-2006
for males, females and all persons in**

Angus Community Health Partnership

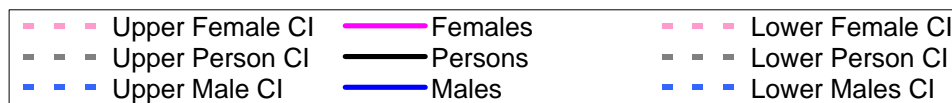
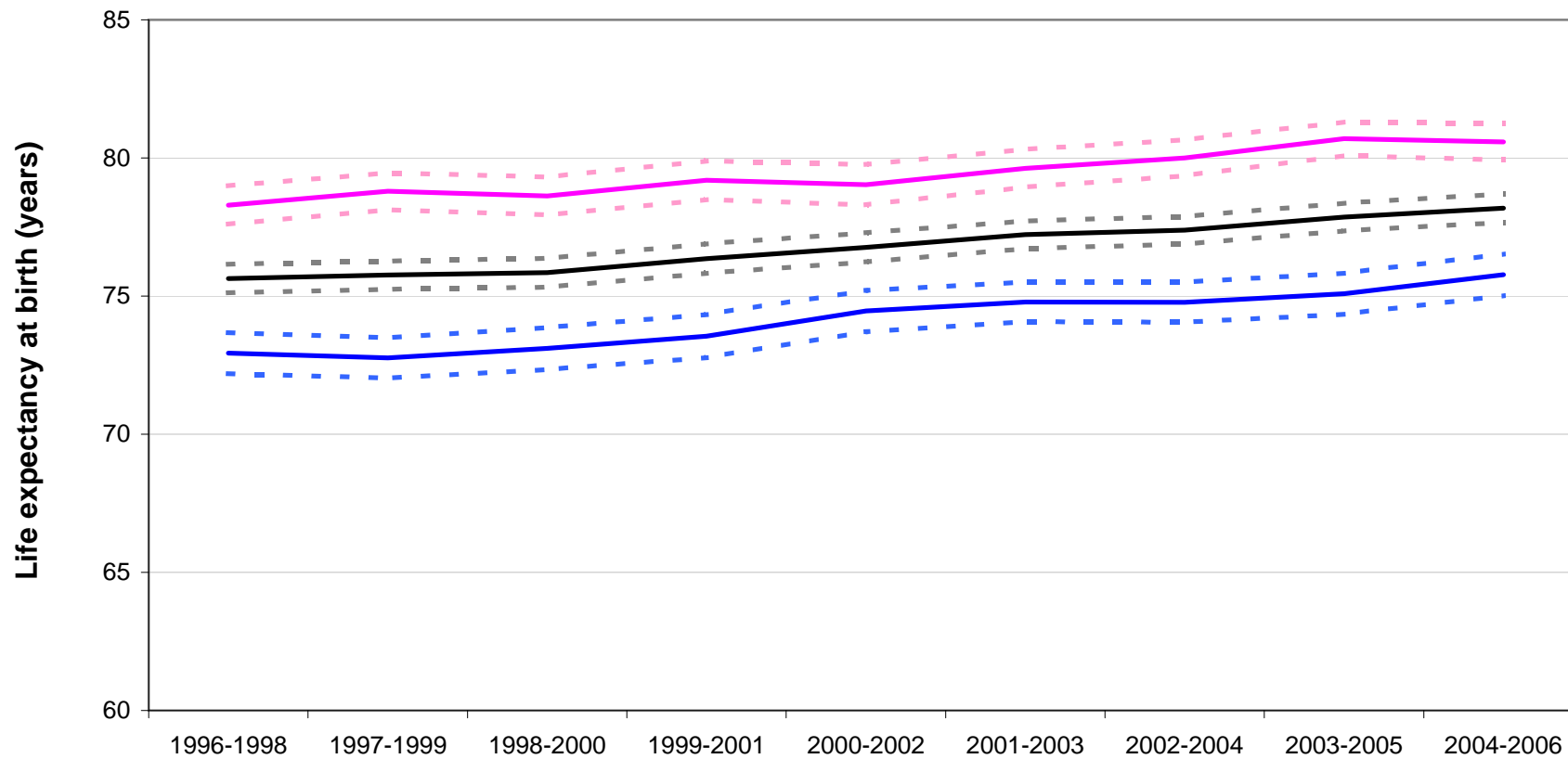


time period



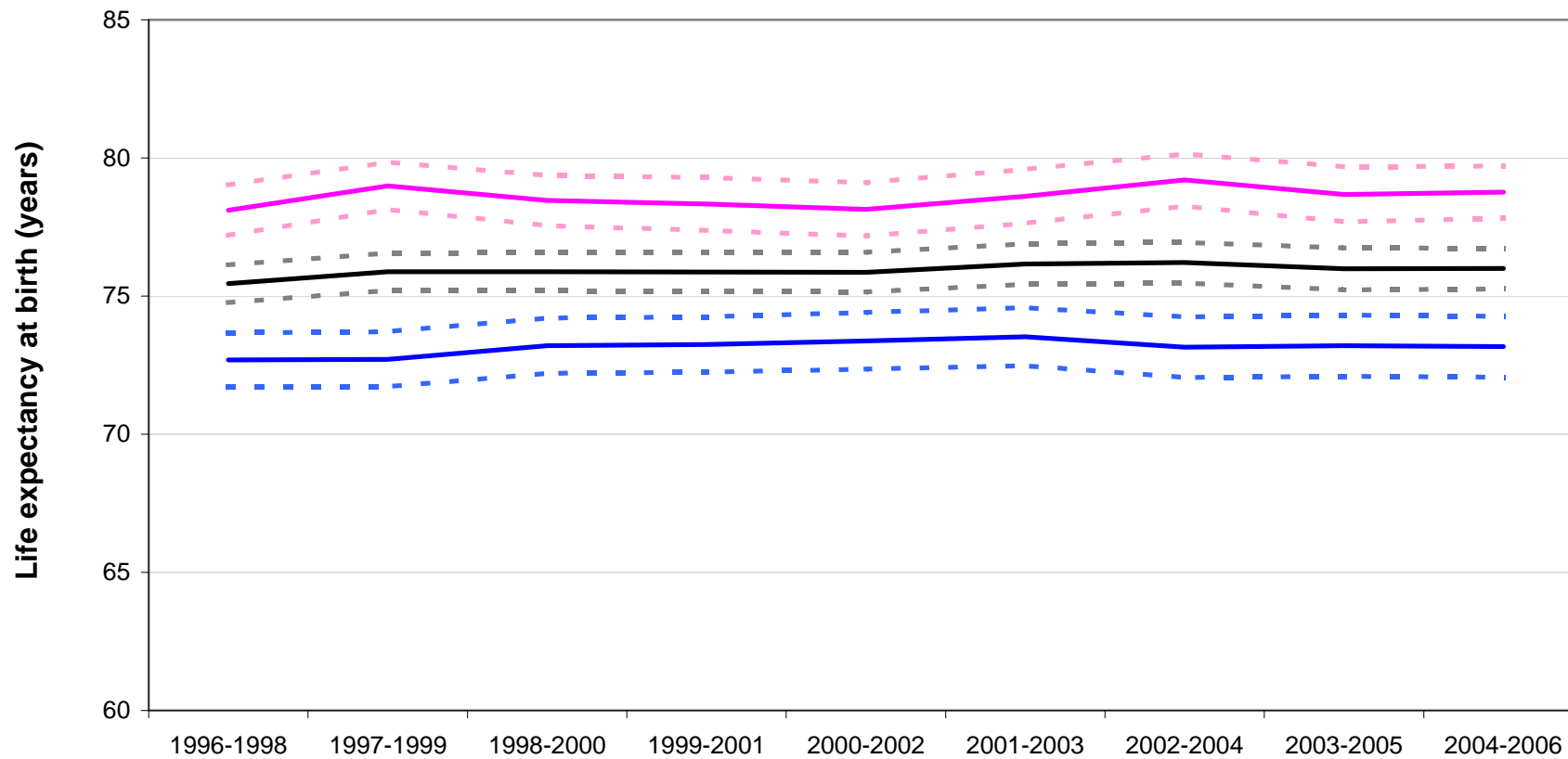
**Life expectancy at birth, with 95% lower and upper confidence intervals, 1996-1998 to 2004-2006
for males, females and all persons in**

Argyll & Bute Community Health Partnership

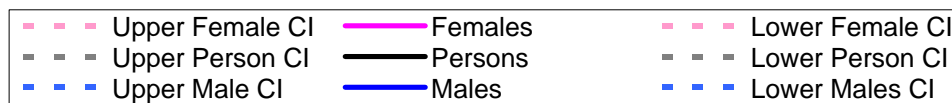


**Life expectancy at birth, with 95% lower and upper confidence intervals, 1996-1998 to 2004-2006
for males, females and all persons in**

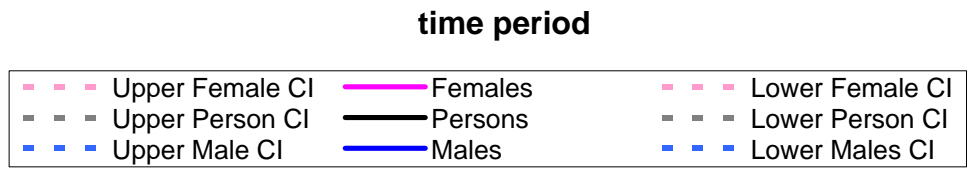
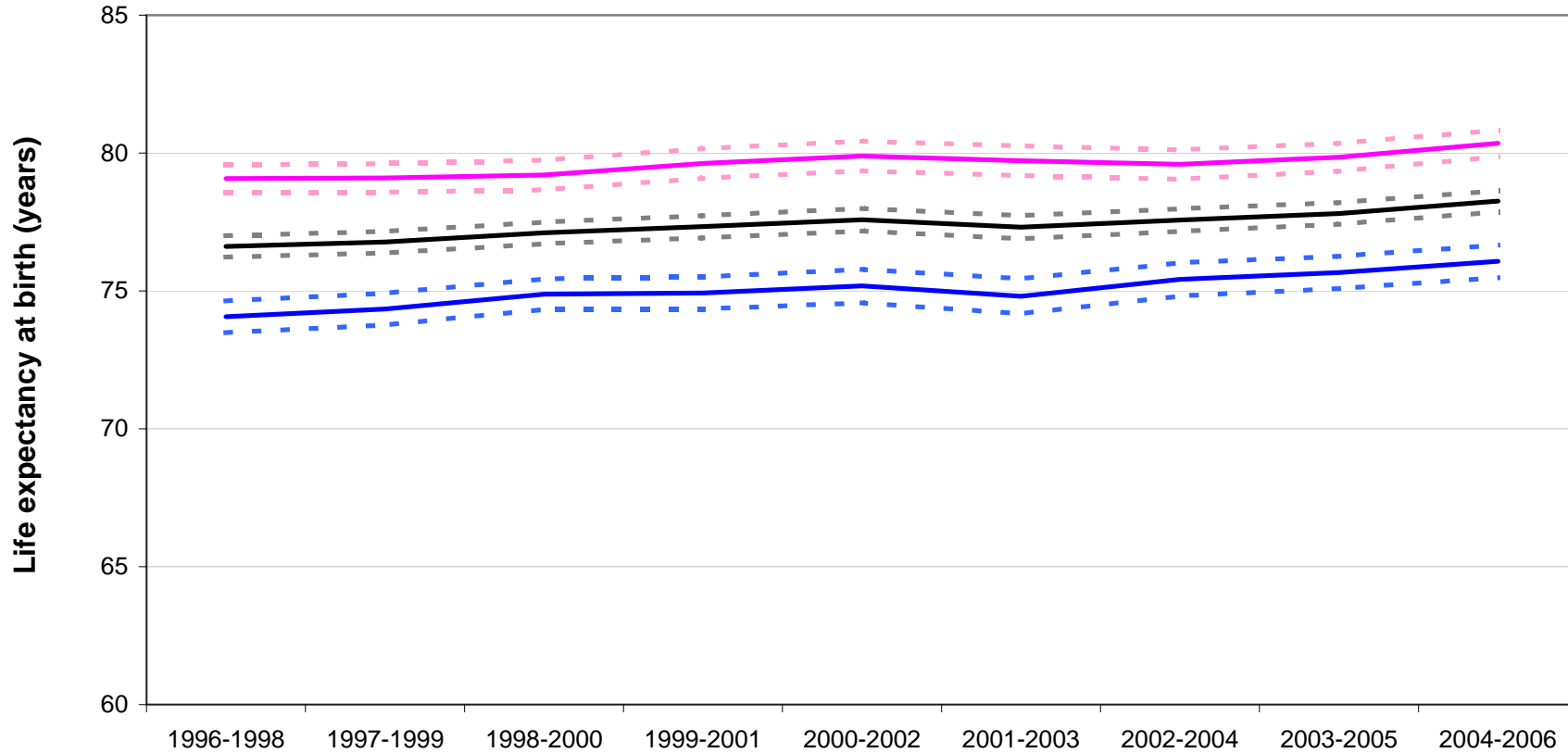
Clackmannanshire Community Health Partnership



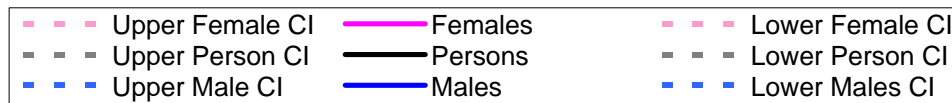
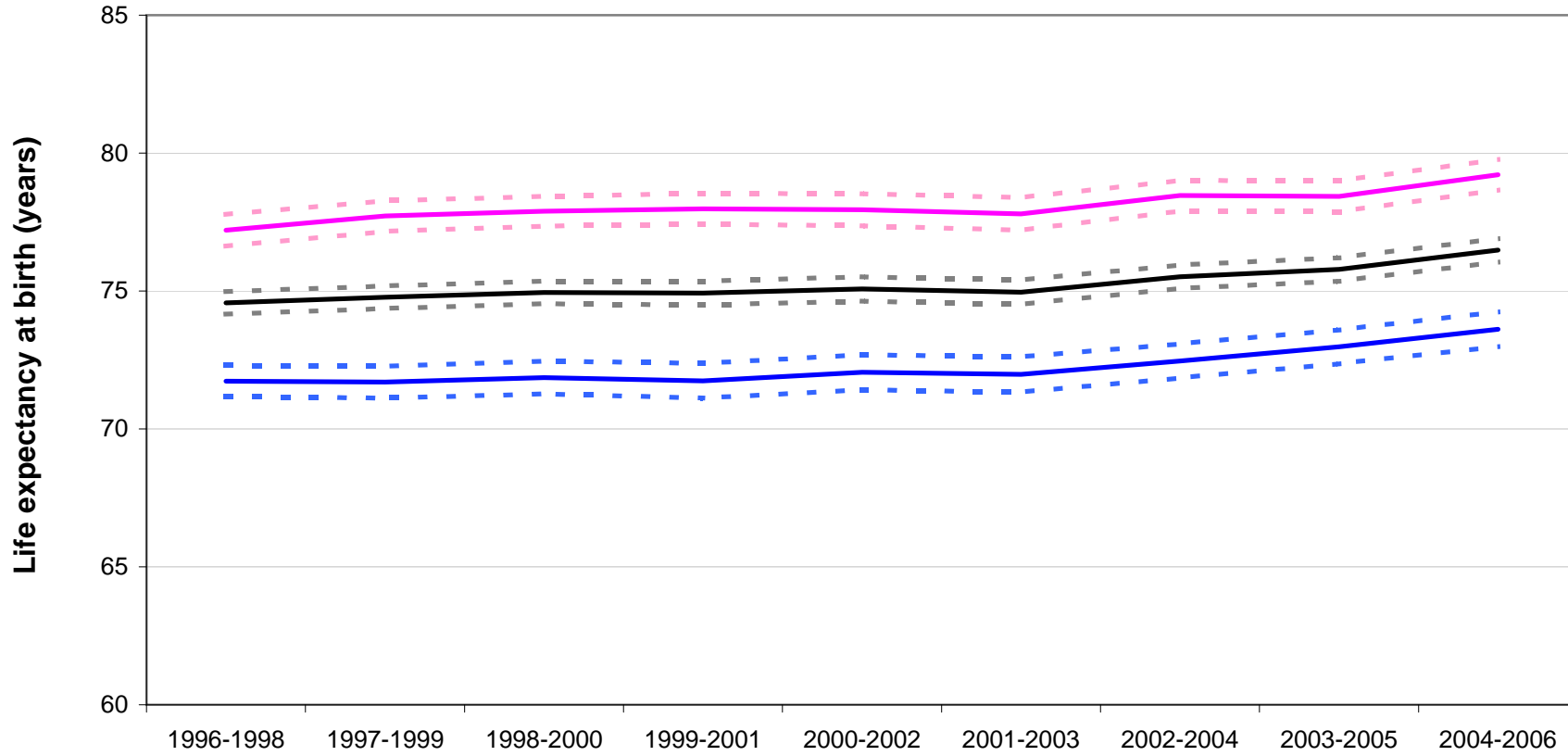
time period



**Life expectancy at birth, with 95% lower and upper confidence intervals, 1996-1998 to 2004-2006
for males, females and all persons in
Dumfries & Galloway Community Health Partnership**

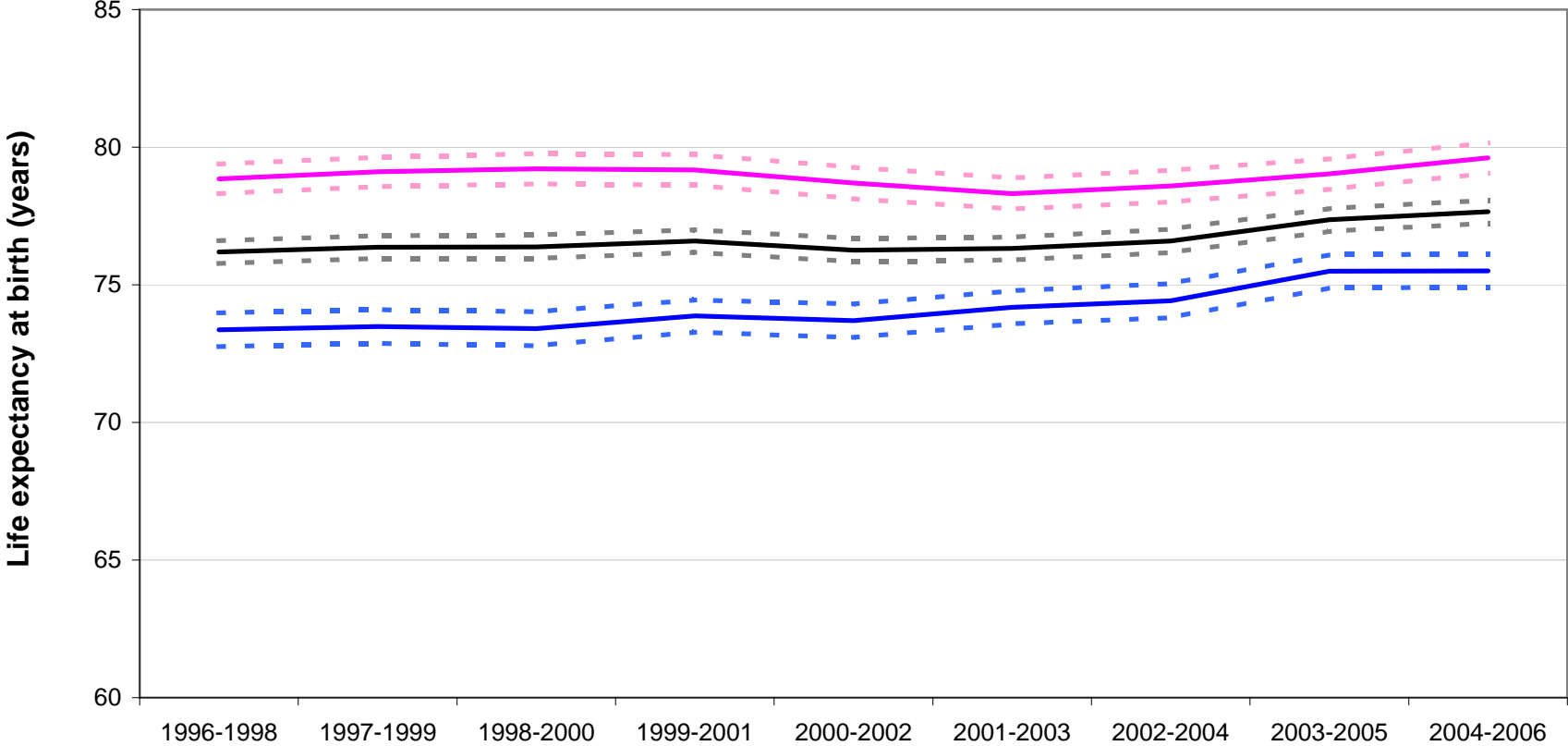


**Life expectancy at birth, with 95% lower and upper confidence intervals, 1996-1998 to 2004-2006
for males, females and all persons in
Dundee City Community Health Partnership**



**Life expectancy at birth, with 95% lower and upper confidence intervals, 1996-1998 to 2004-2006
for males, females and all persons in**

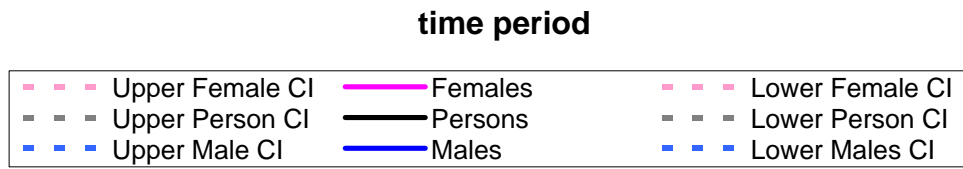
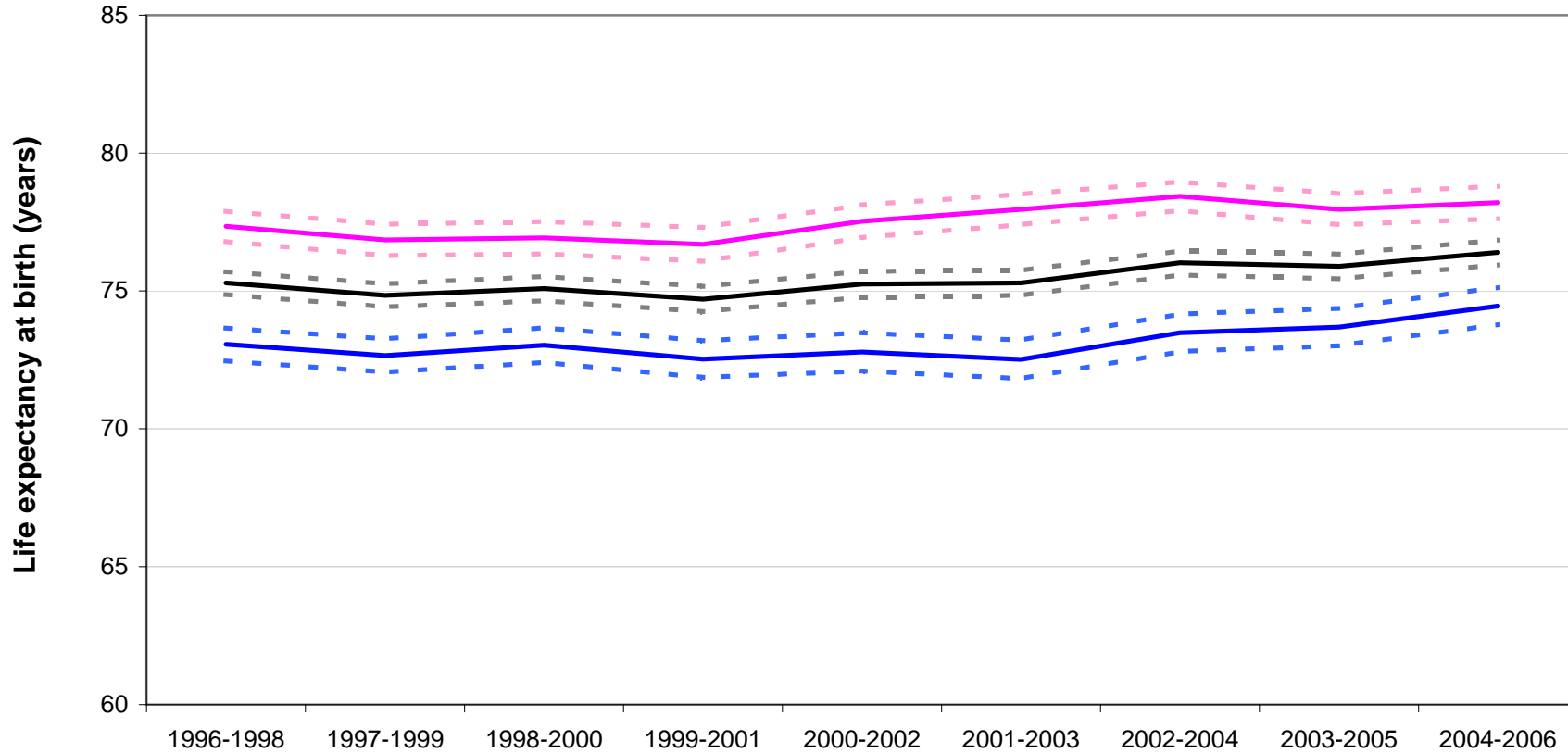
Dunfermline & West Fife Community Health Partnership



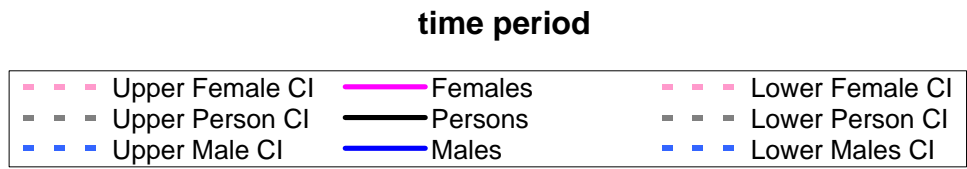
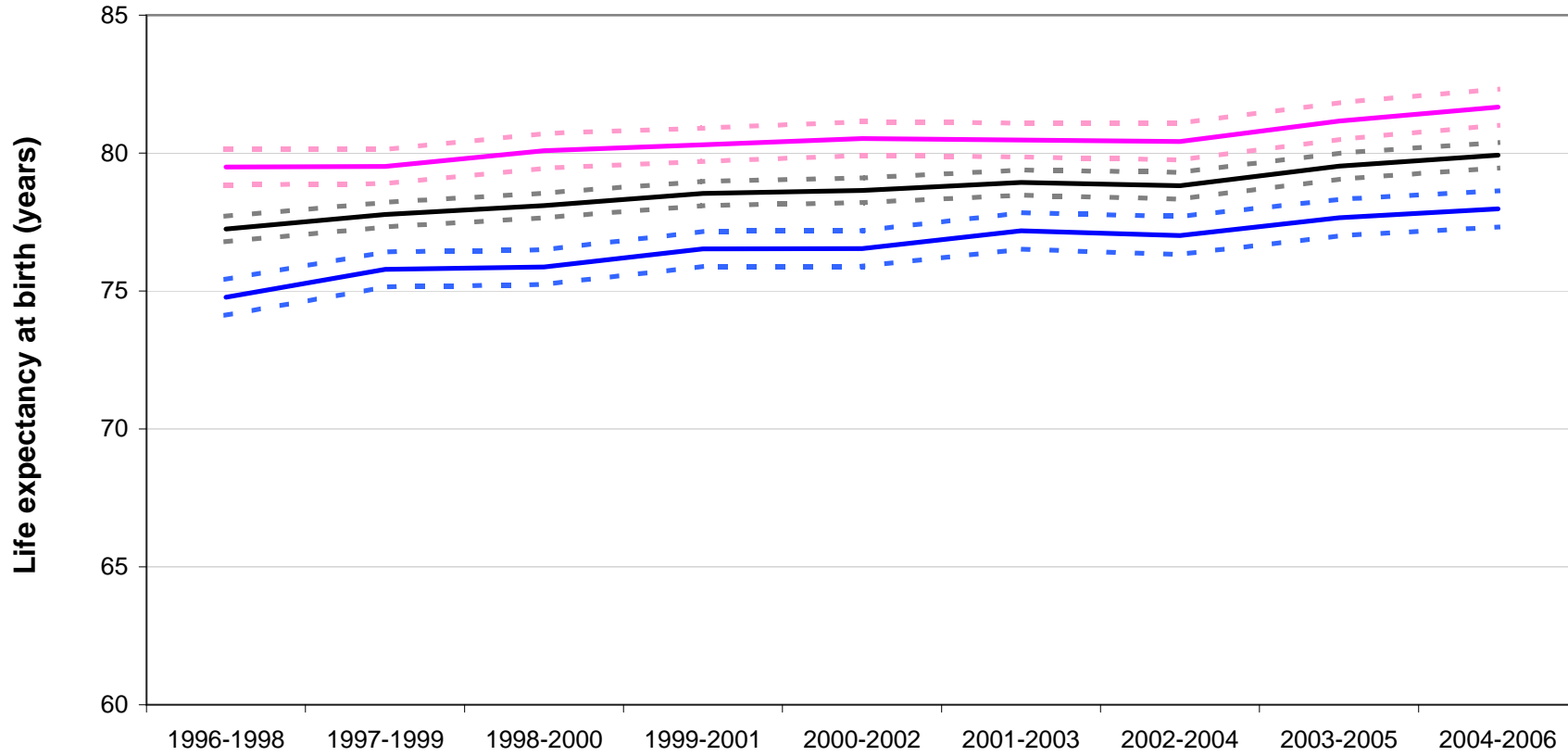
time period



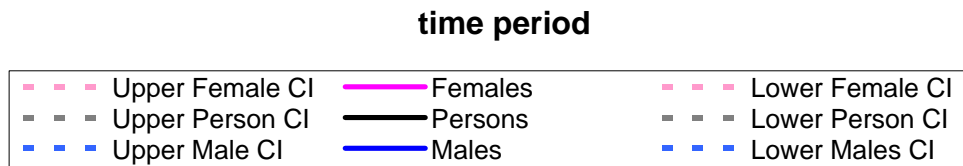
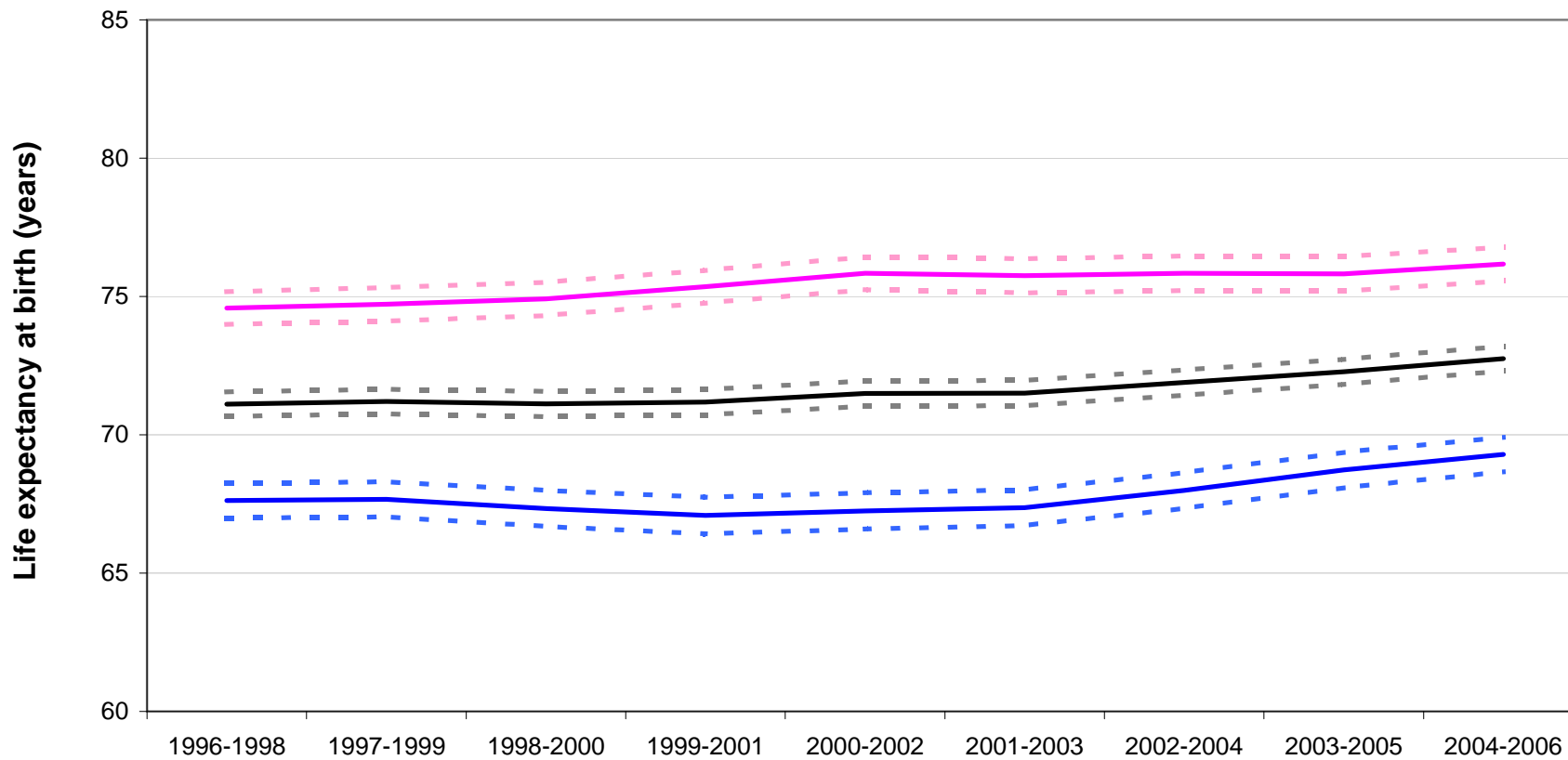
**Life expectancy at birth, with 95% lower and upper confidence intervals, 1996-1998 to 2004-2006
for males, females and all persons in
East Ayrshire Community Health Partnership**



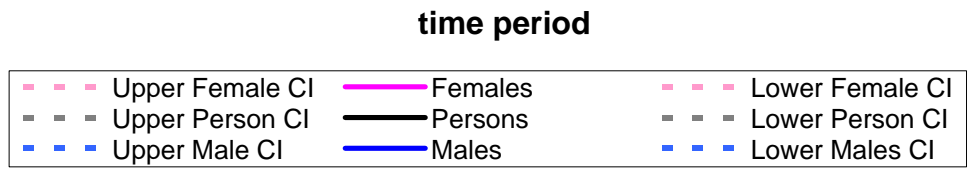
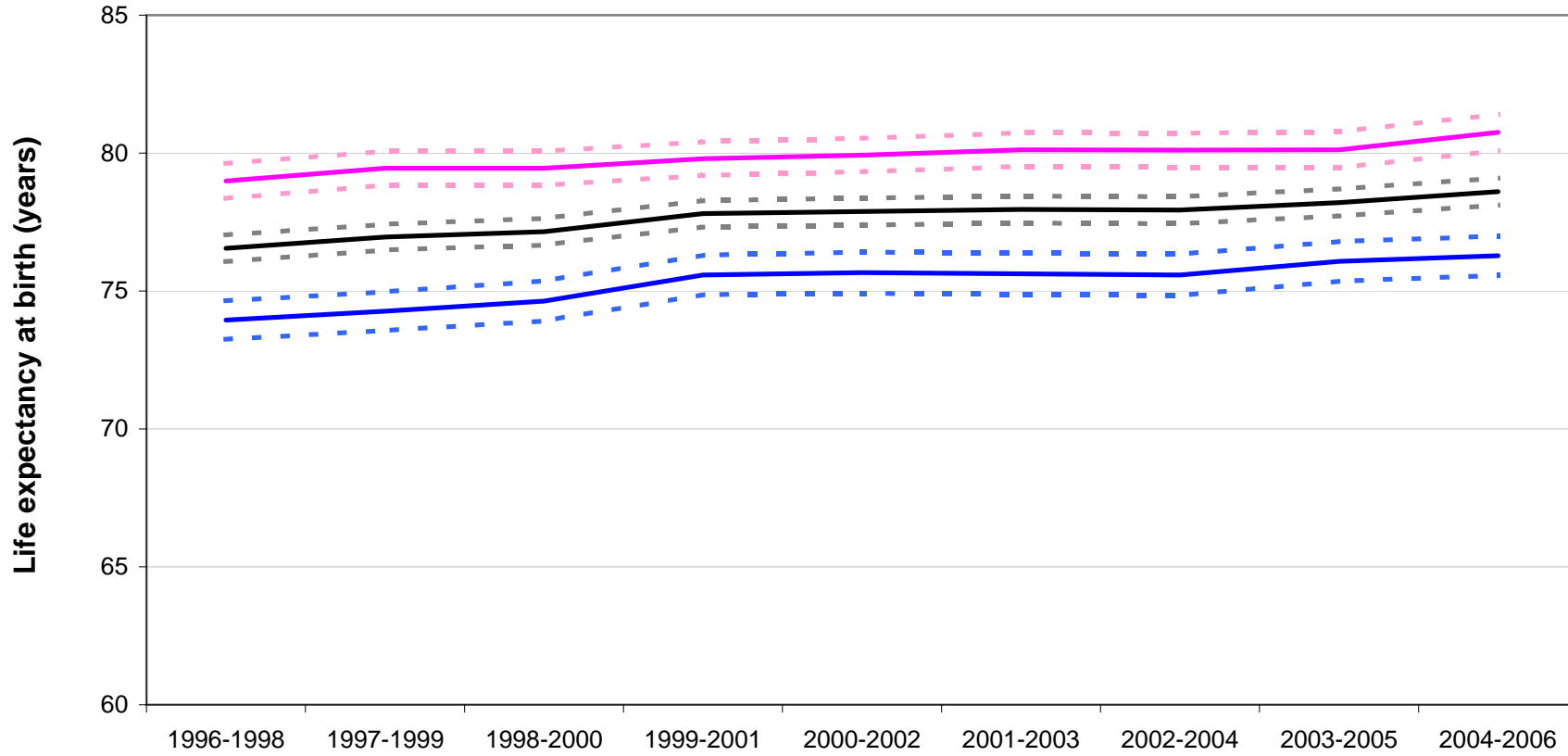
**Life expectancy at birth, with 95% lower and upper confidence intervals, 1996-1998 to 2004-2006
for males, females and all persons in
East Dunbartonshire Community Health Partnership**



**Life expectancy at birth, with 95% lower and upper confidence intervals, 1996-1998 to 2004-2006
for males, females and all persons in
East Glasgow Community Health & Care Partnership**

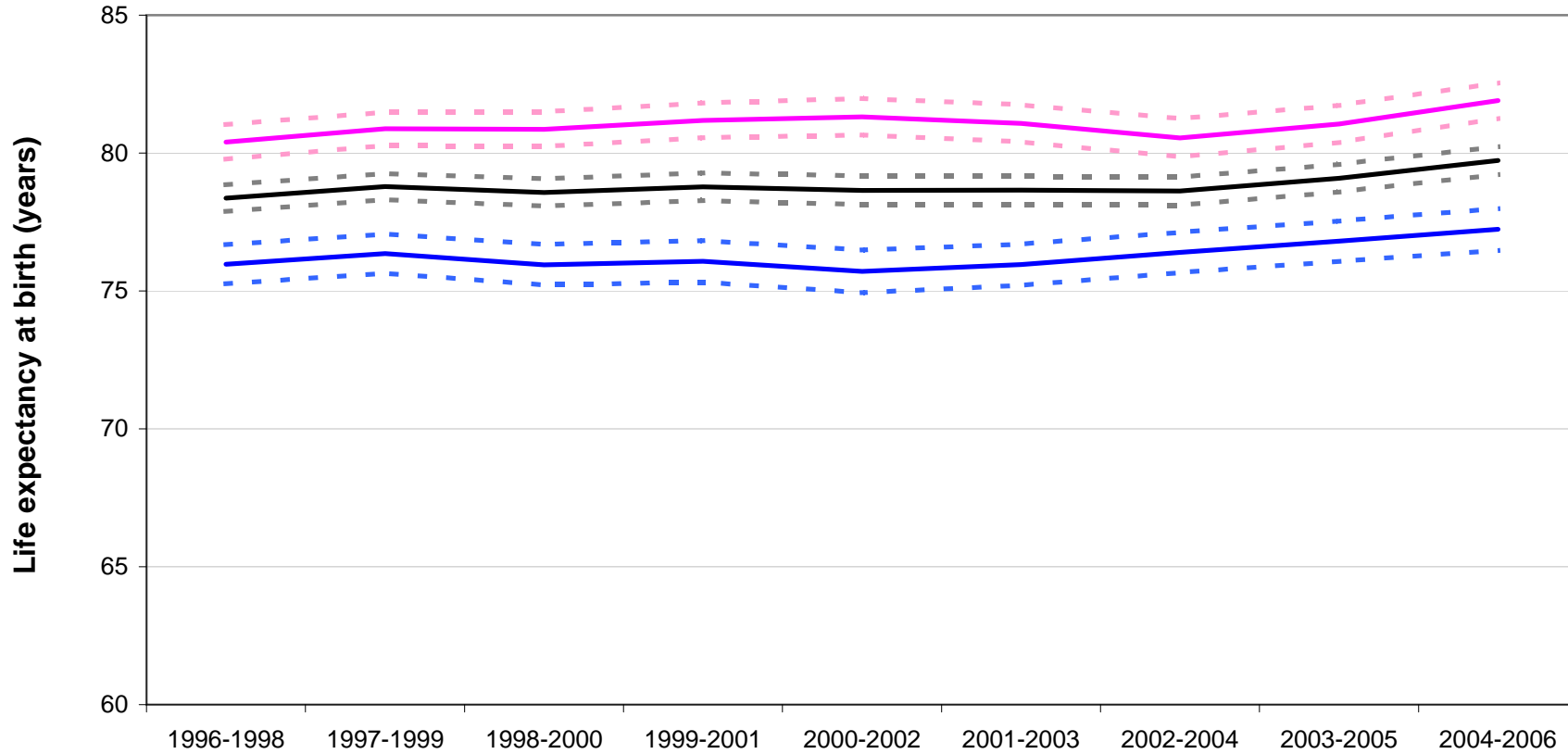


**Life expectancy at birth, with 95% lower and upper confidence intervals, 1996-1998 to 2004-2006
for males, females and all persons in
East Lothian Community Health Partnership**

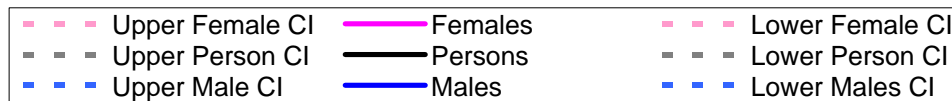


**Life expectancy at birth, with 95% lower and upper confidence intervals, 1996-1998 to 2004-2006
for males, females and all persons in**

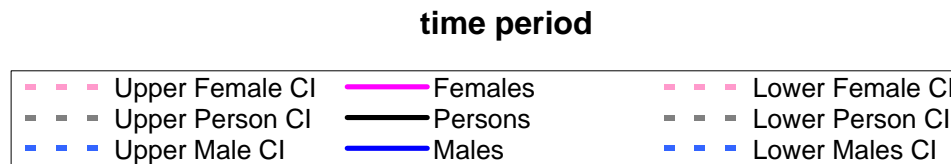
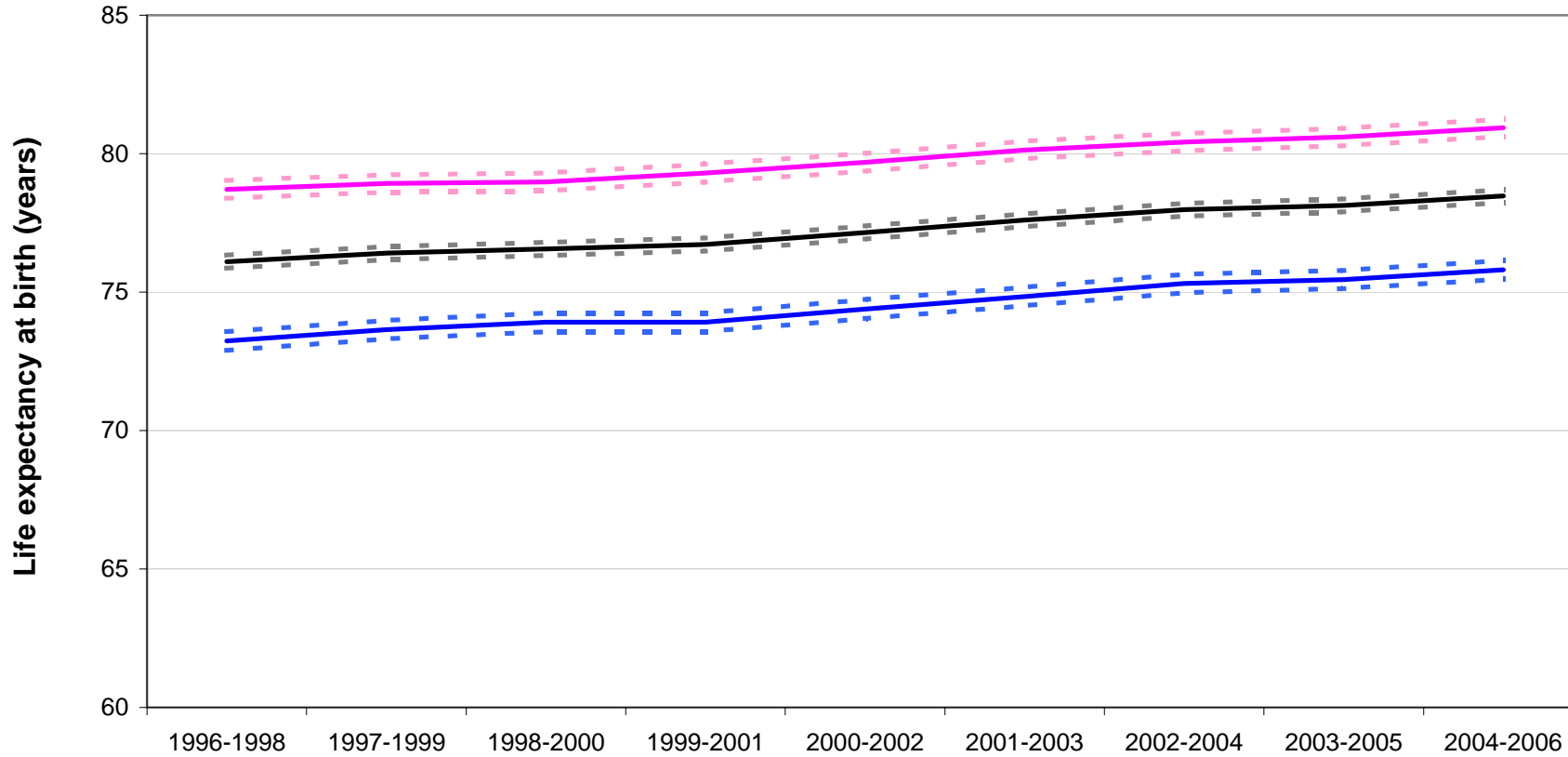
East Renfrewshire Community Health & Care Partnership



time period

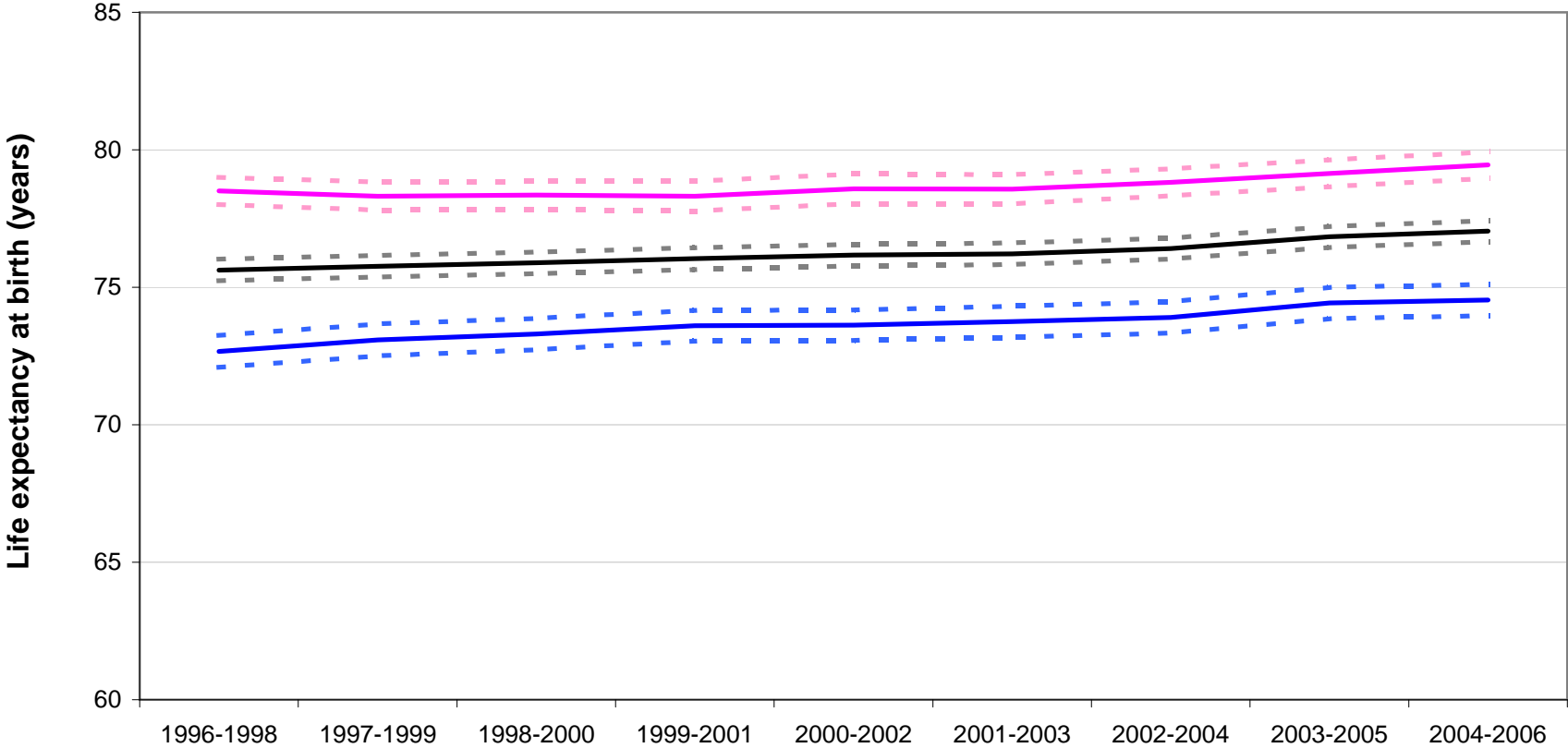


**Life expectancy at birth, with 95% lower and upper confidence intervals, 1996-1998 to 2004-2006
for males, females and all persons in
Edinburgh Community Health Partnership**



**Life expectancy at birth, with 95% lower and upper confidence intervals, 1996-1998 to 2004-2006
for males, females and all persons in**

Falkirk Community Health Partnership

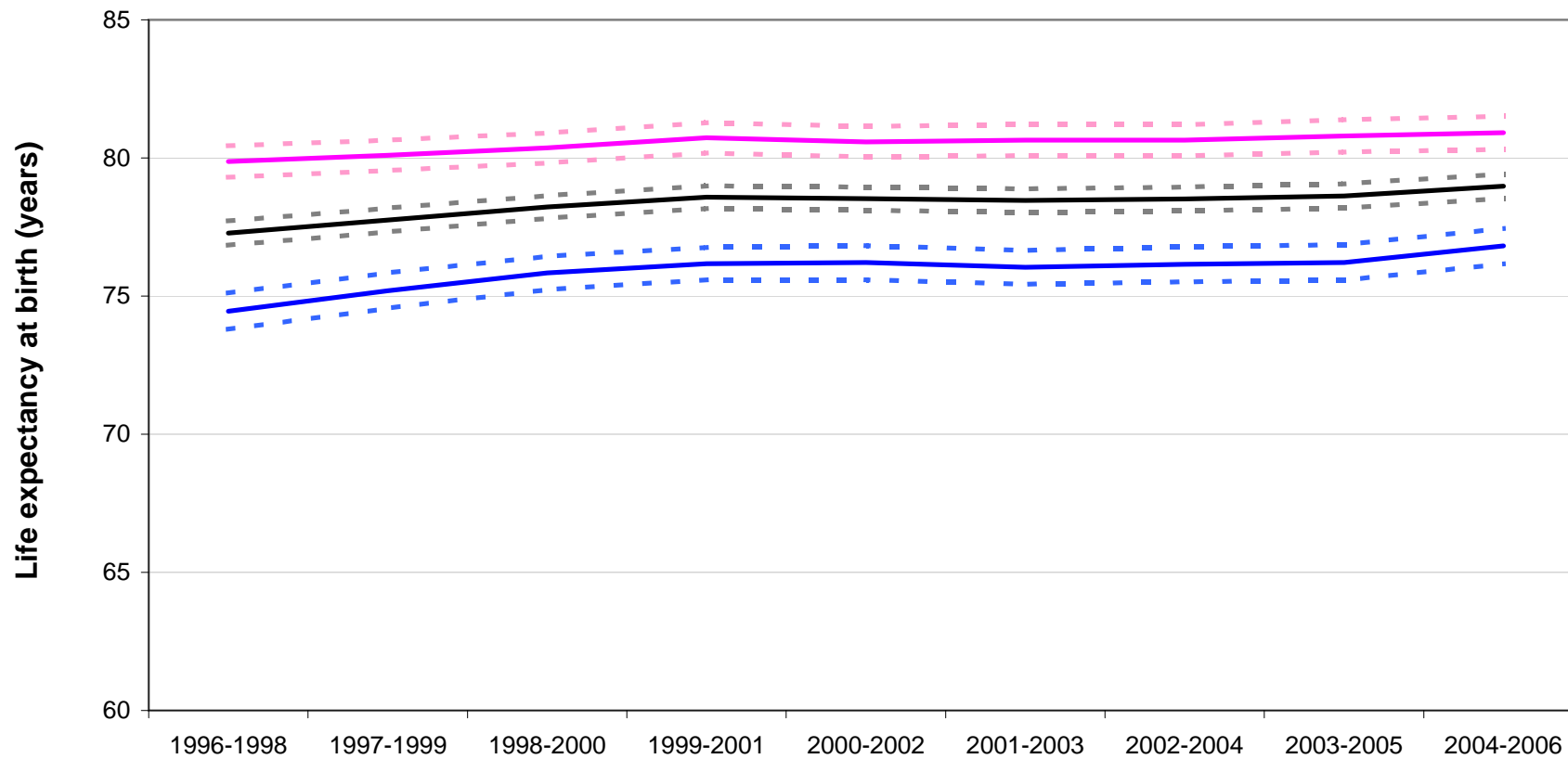


time period

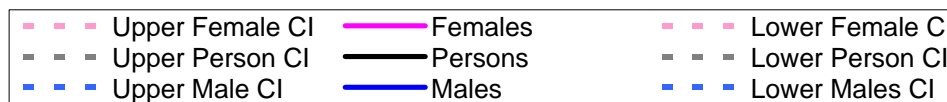


**Life expectancy at birth, with 95% lower and upper confidence intervals, 1996-1998 to 2004-2006
for males, females and all persons in**

Glenrothes & North East Fife Community Health Partnership

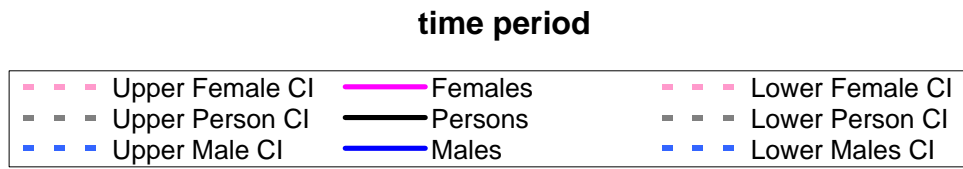
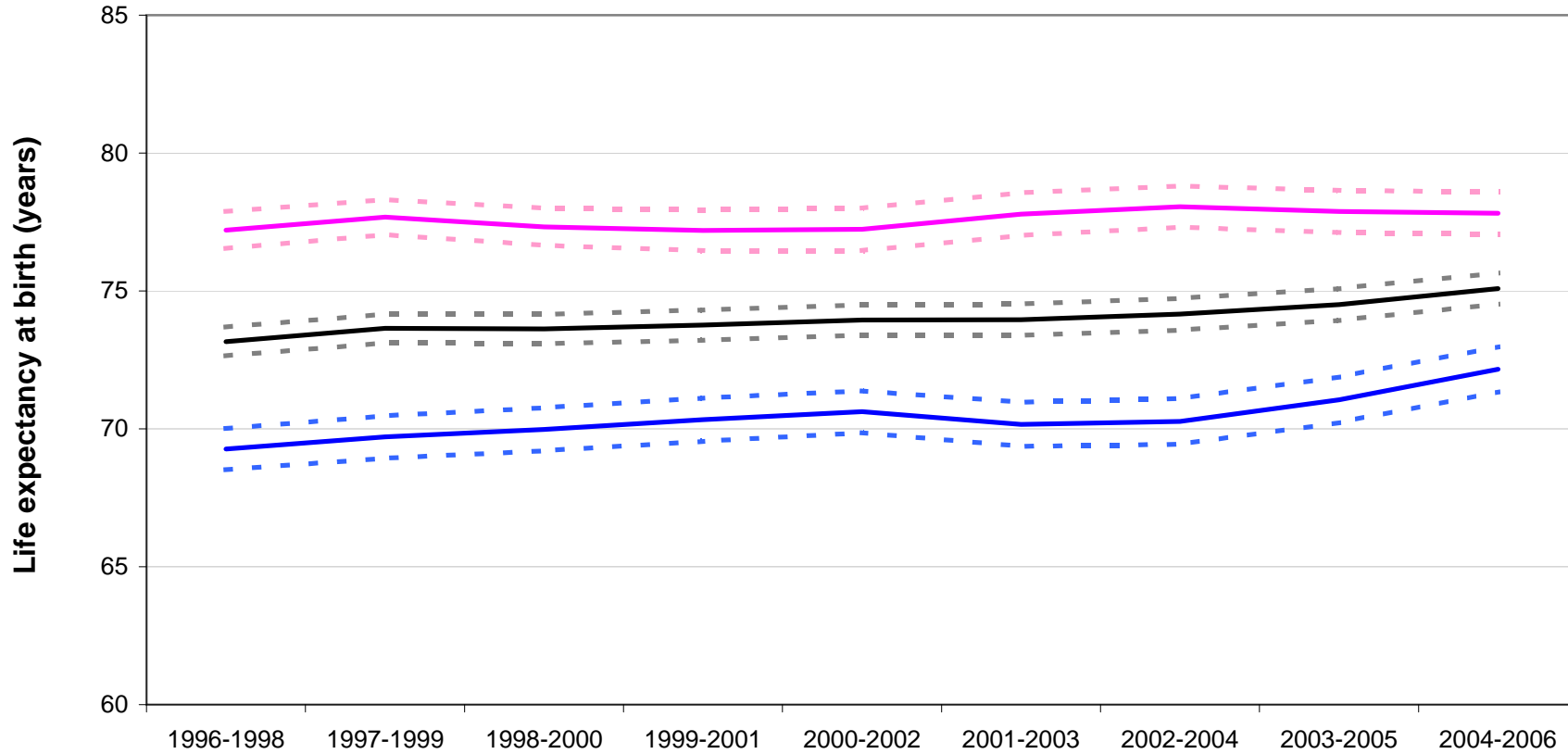


time period

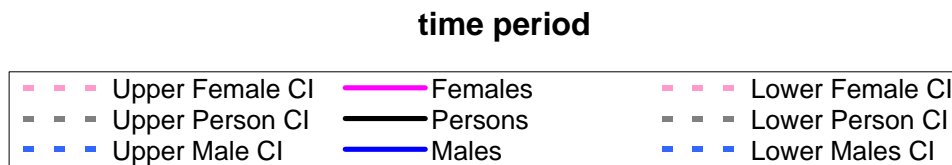
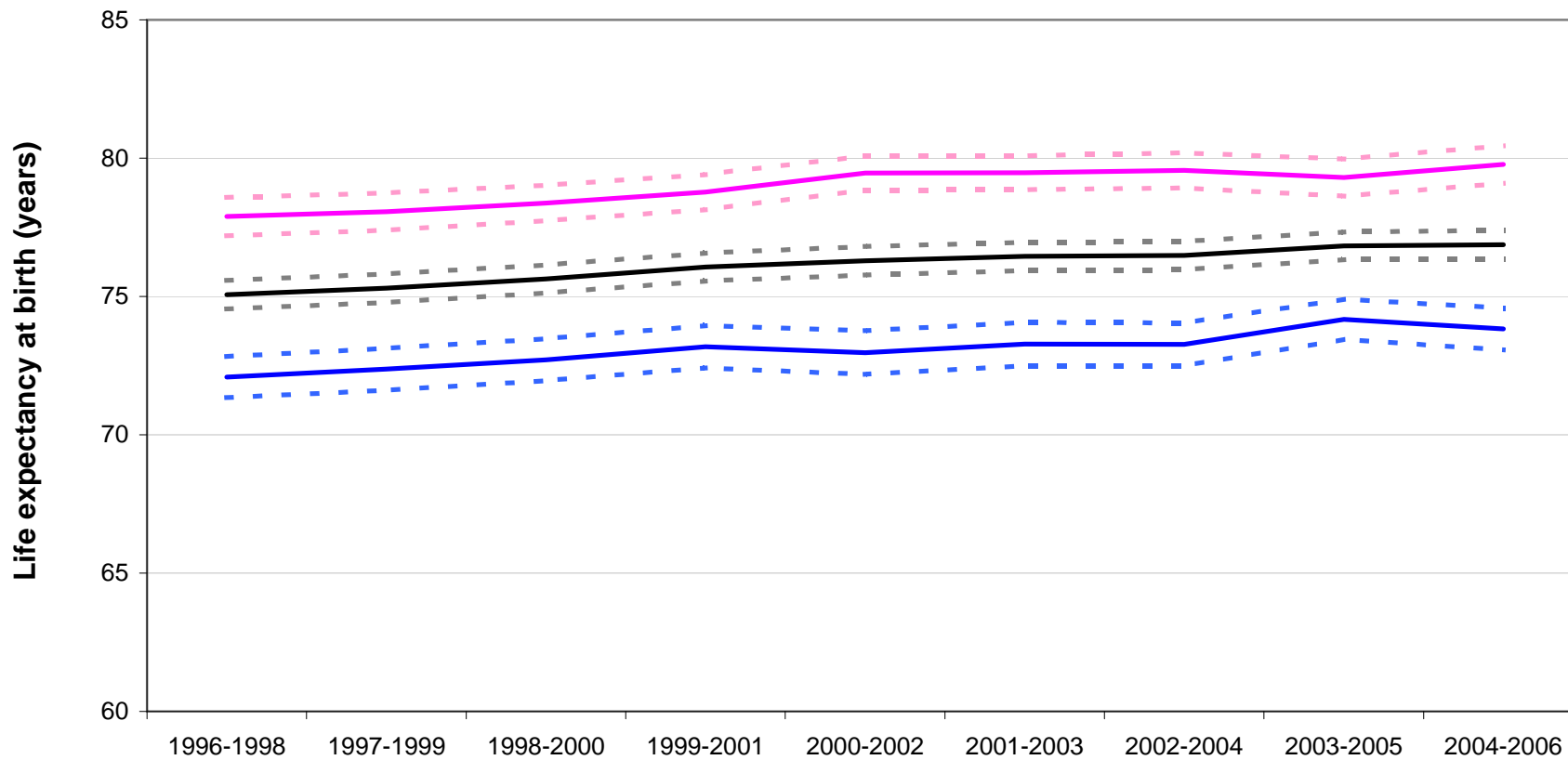


**Life expectancy at birth, with 95% lower and upper confidence intervals, 1996-1998 to 2004-2006
for males, females and all persons in**

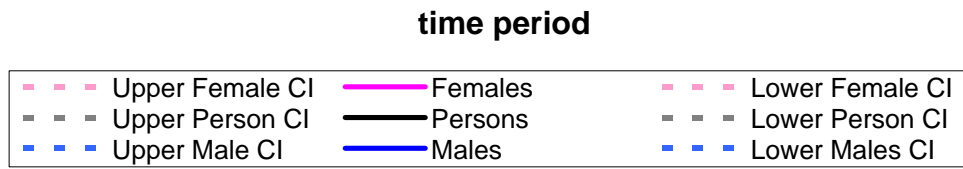
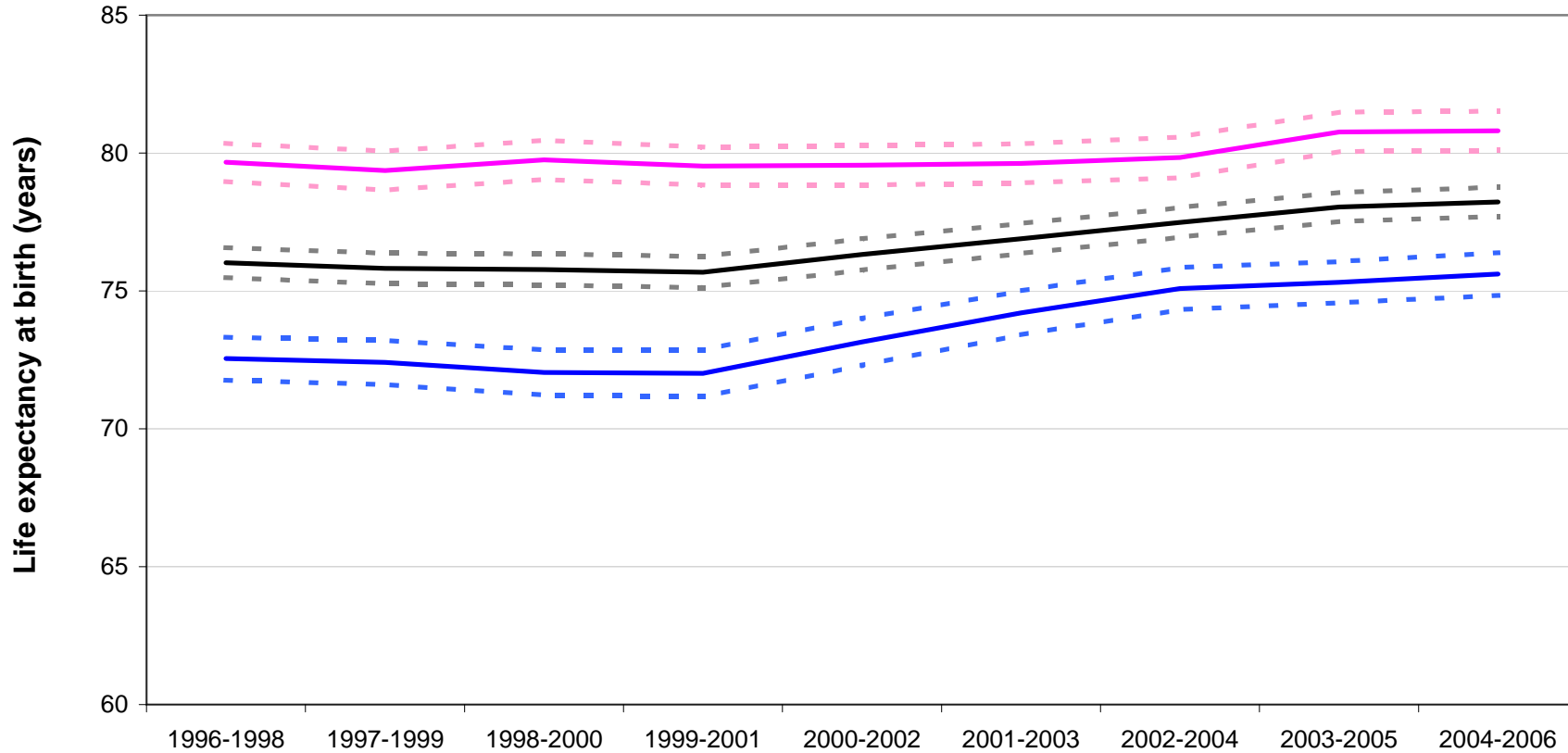
Inverclyde Community Health & Care Partnership



**Life expectancy at birth, with 95% lower and upper confidence intervals, 1996-1998 to 2004-2006
for males, females and all persons in
Kirkcaldy & Levenmouth Community Health Partnership**

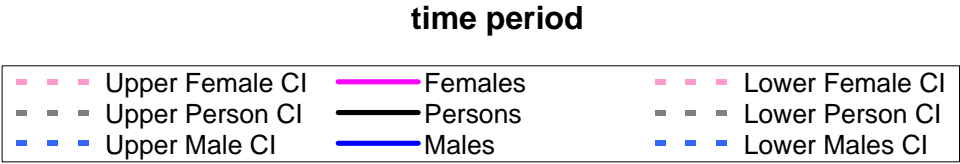
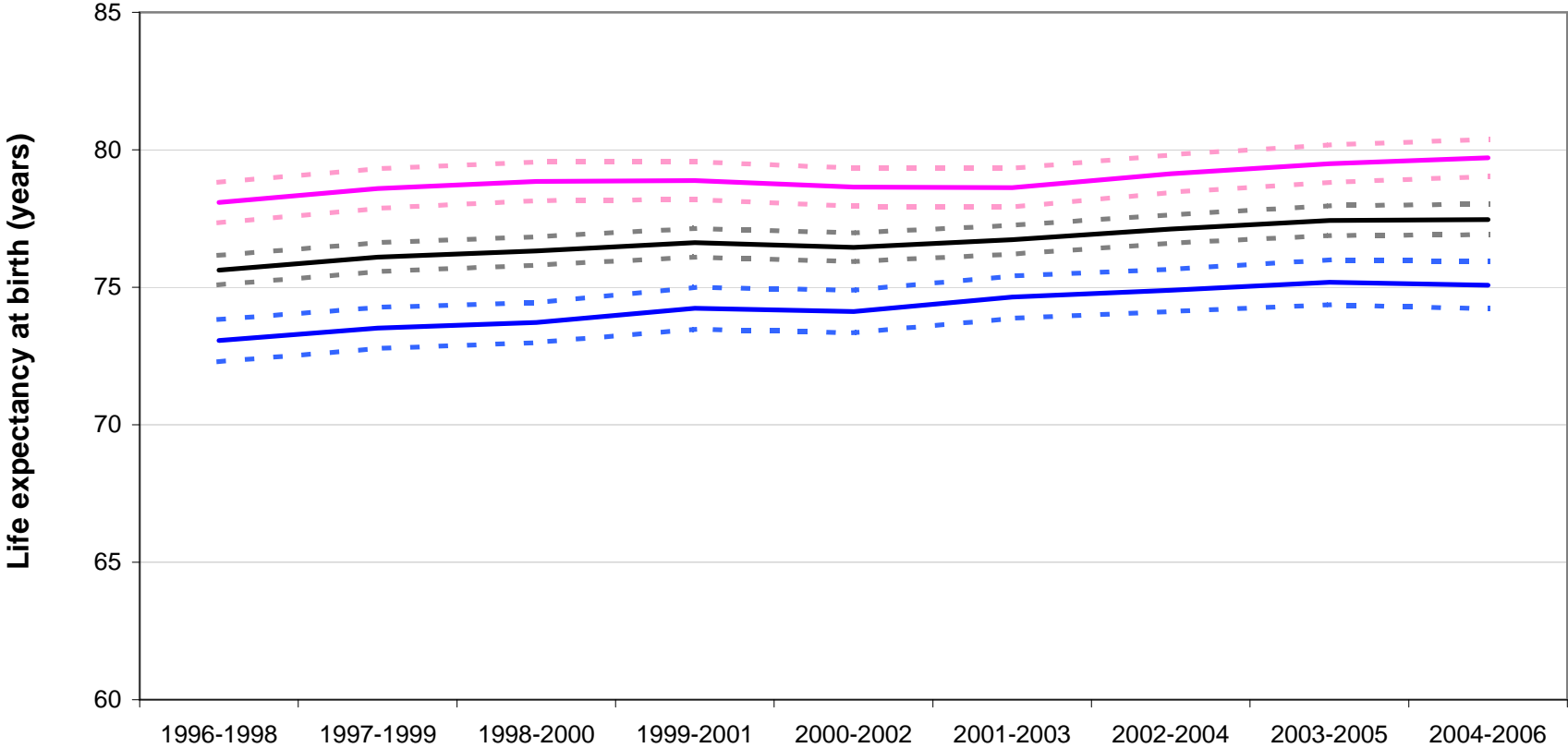


**Life expectancy at birth, with 95% lower and upper confidence intervals, 1996-1998 to 2004-2006
for males, females and all persons in
Mid Highland Community Health Partnership**

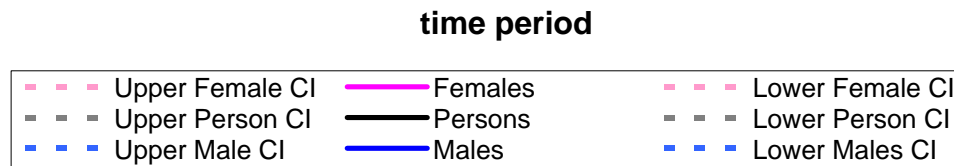
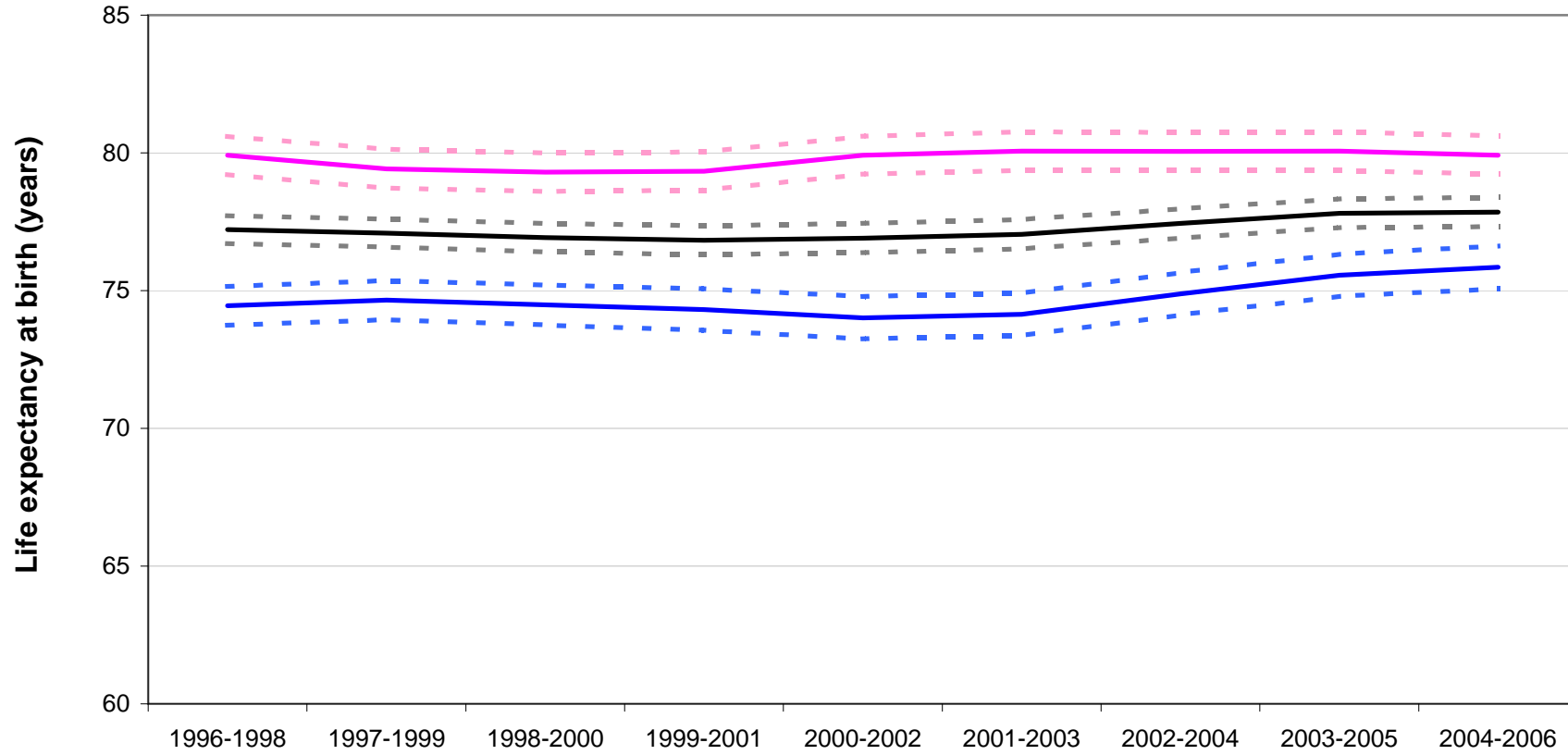


**Life expectancy at birth, with 95% lower and upper confidence intervals, 1996-1998 to 2004-2006
for males, females and all persons in**

Midlothian Community Health Partnership

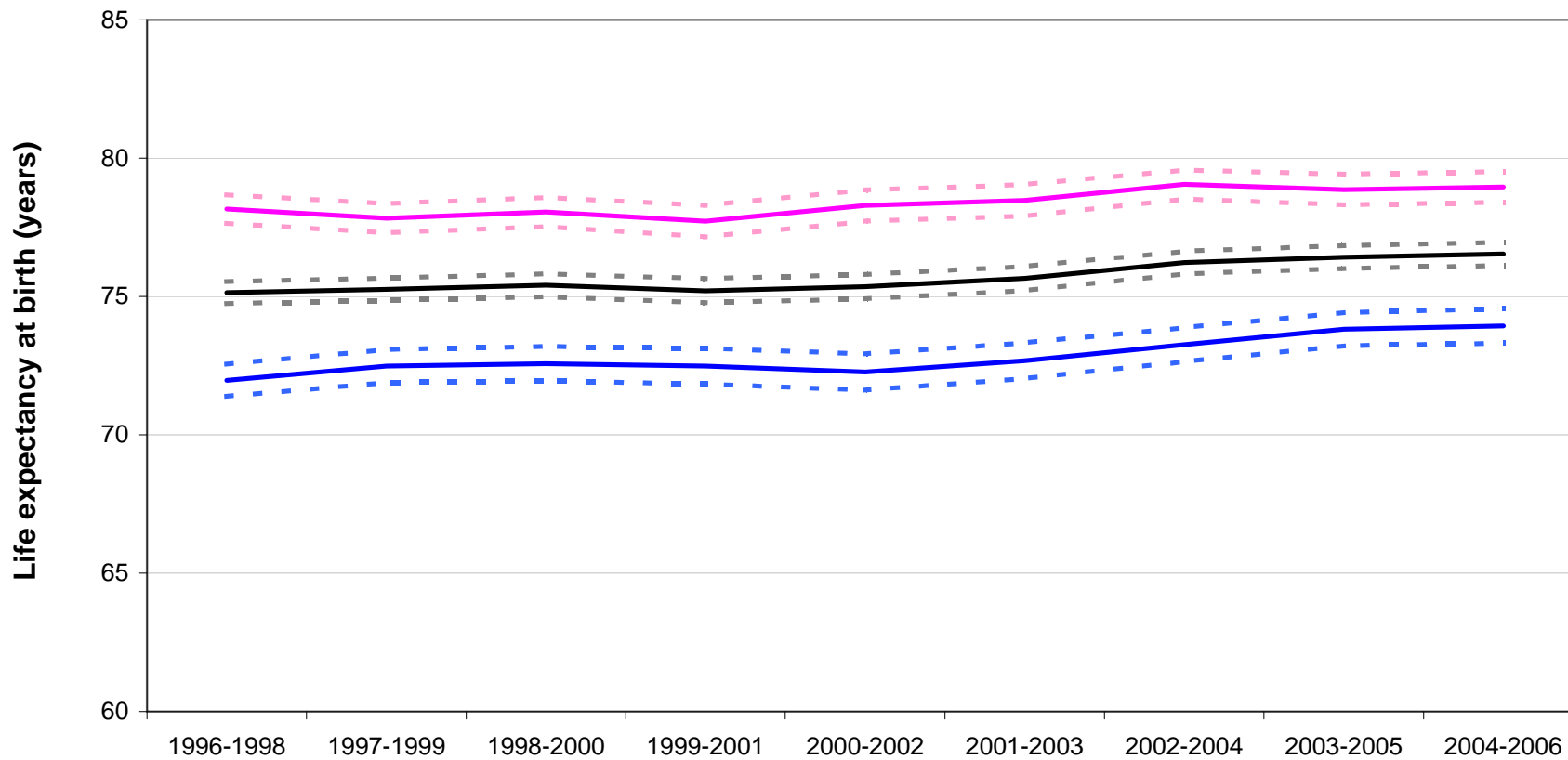


**Life expectancy at birth, with 95% lower and upper confidence intervals, 1996-1998 to 2004-2006
for males, females and all persons in
Moray Community Health & Social Care Partnership**

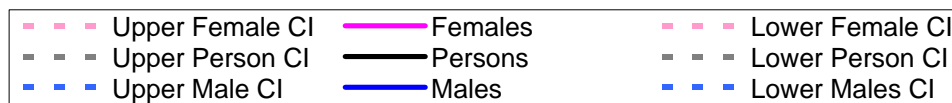


**Life expectancy at birth, with 95% lower and upper confidence intervals, 1996-1998 to 2004-2006
for males, females and all persons in**

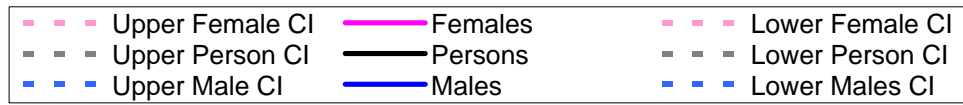
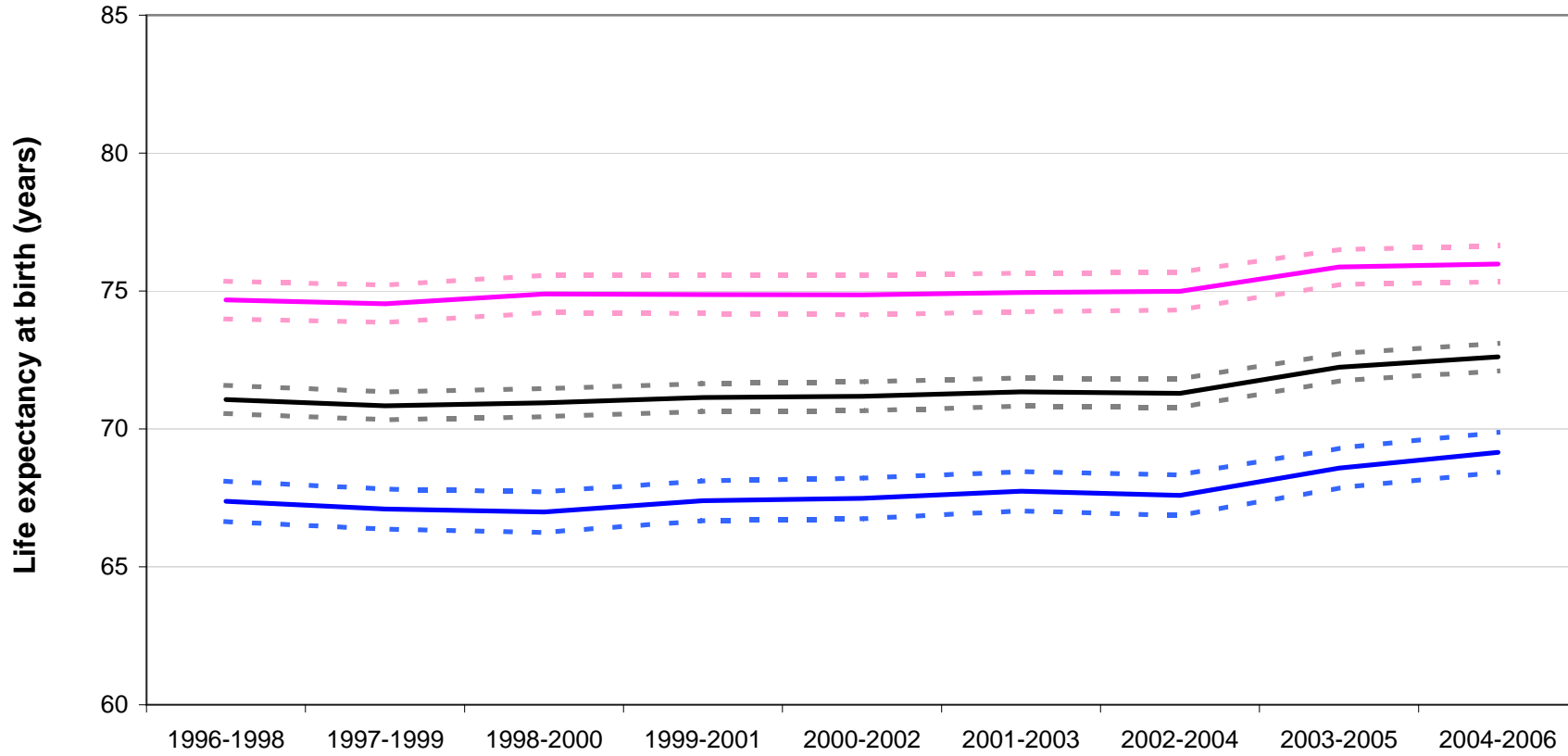
North Ayrshire Community Health Partnership



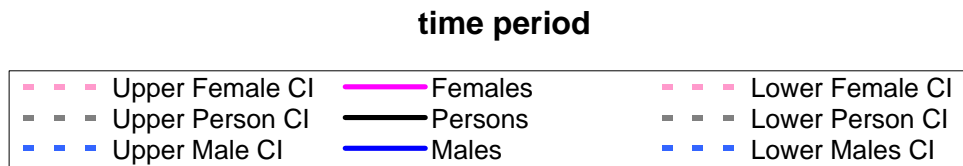
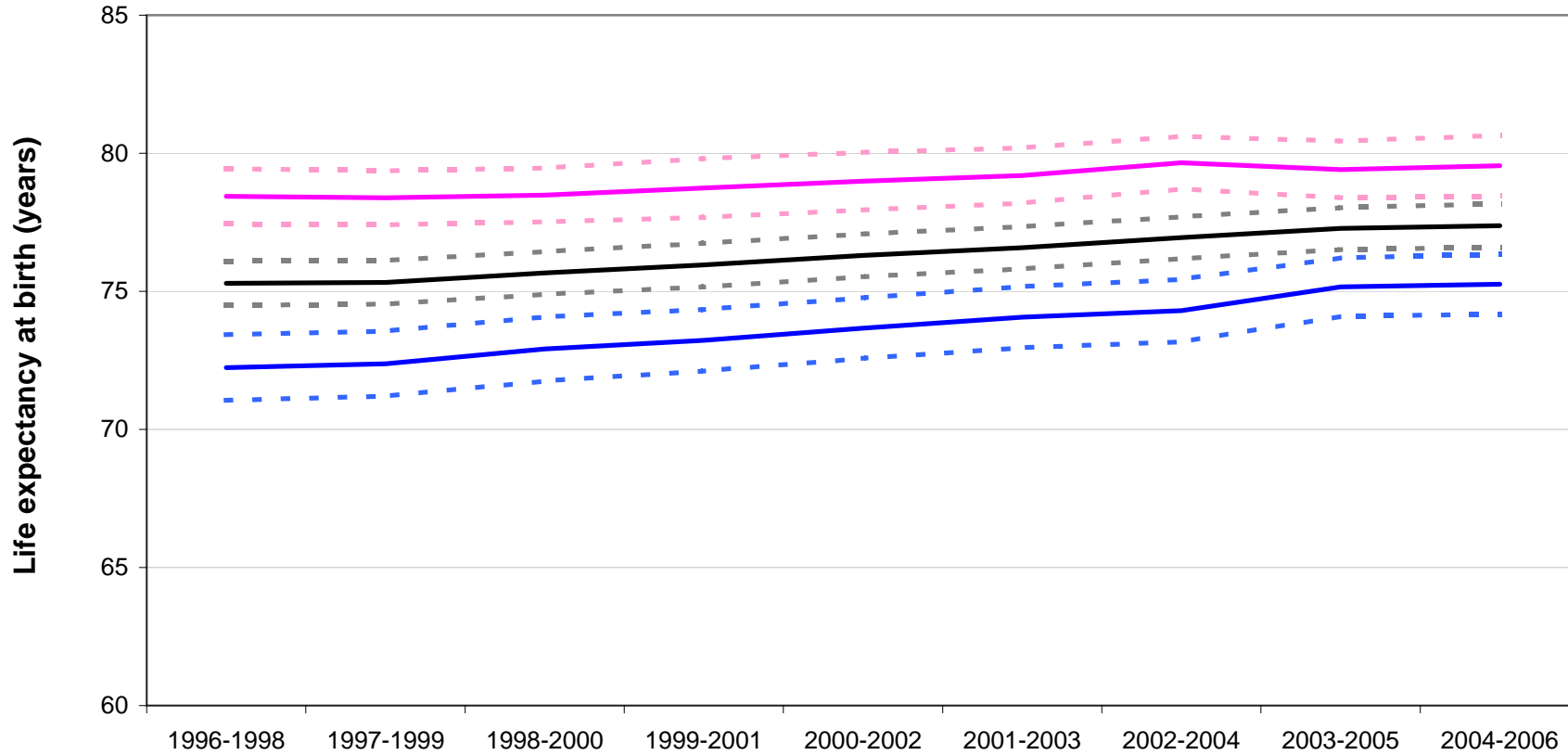
time period



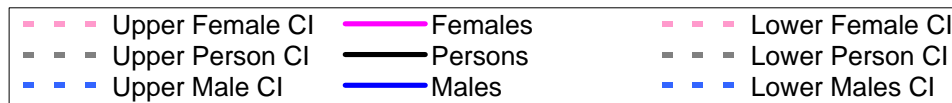
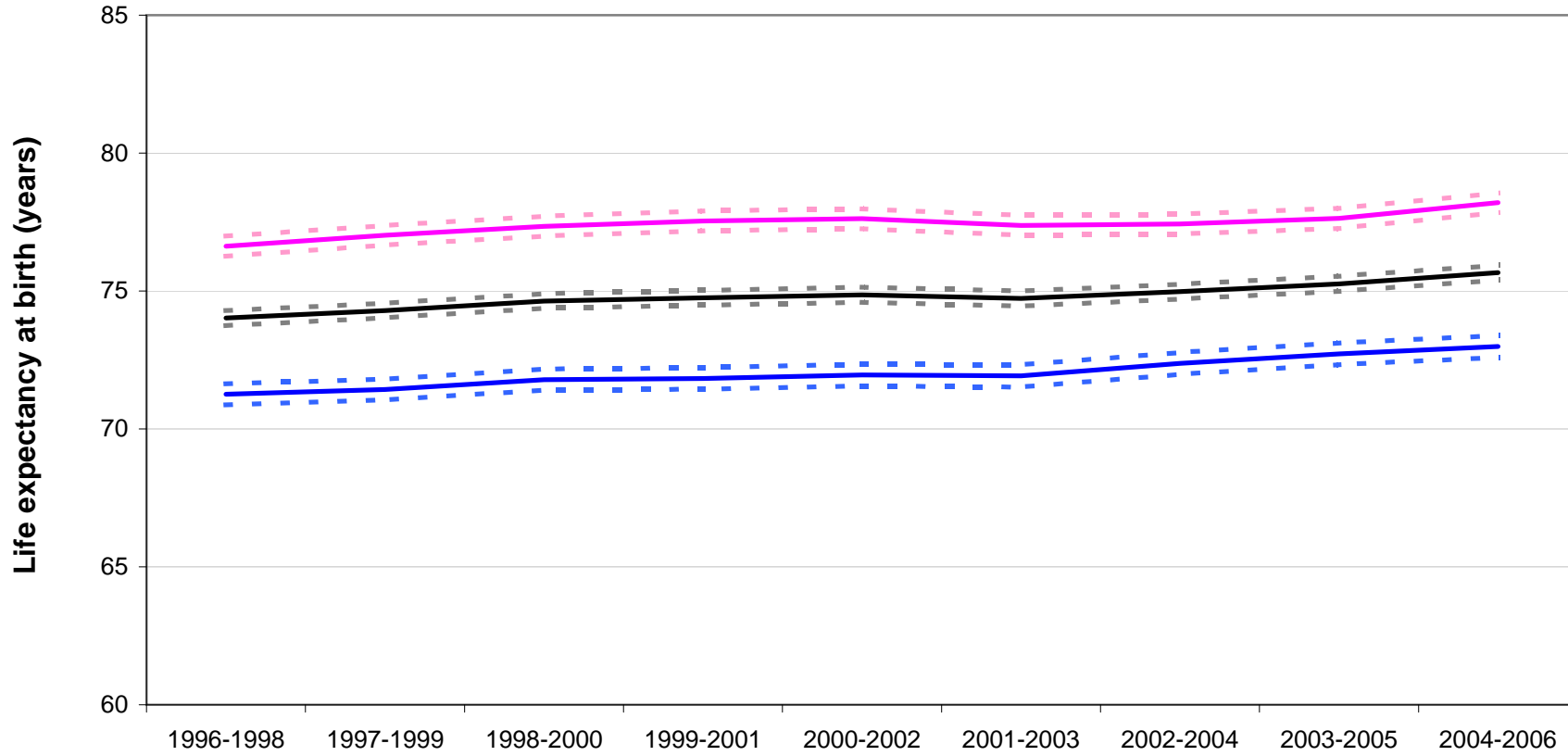
**Life expectancy at birth, with 95% lower and upper confidence intervals, 1996-1998 to 2004-2006
for males, females and all persons in
North Glasgow Community Health & Care Partnership**



**Life expectancy at birth, with 95% lower and upper confidence intervals, 1996-1998 to 2004-2006
for males, females and all persons in
North Highland Community Health Partnership**

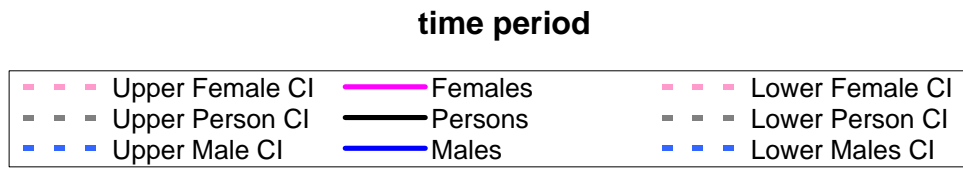
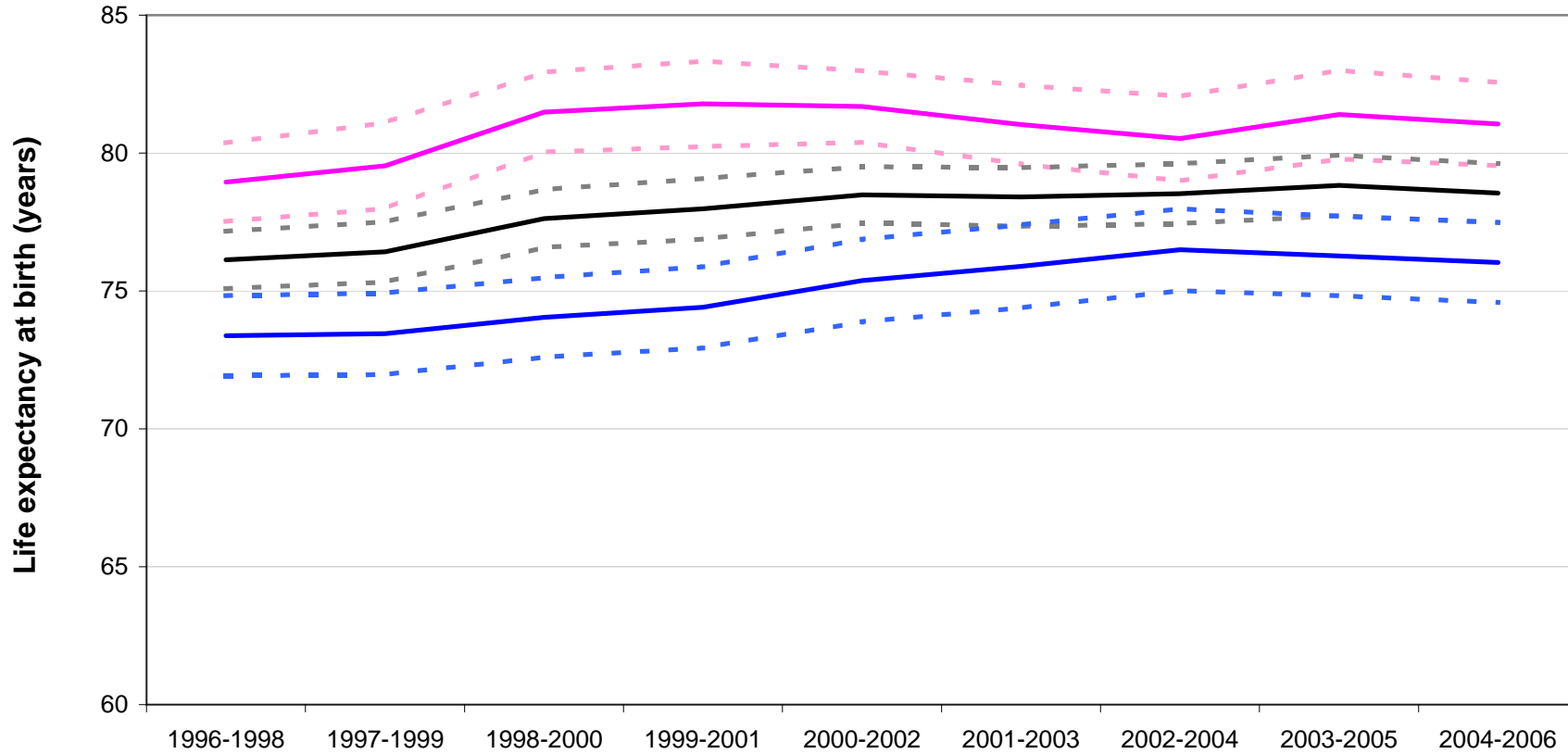


**Life expectancy at birth, with 95% lower and upper confidence intervals, 1996-1998 to 2004-2006
for males, females and all persons in
North Lanarkshire Community Health Partnership**

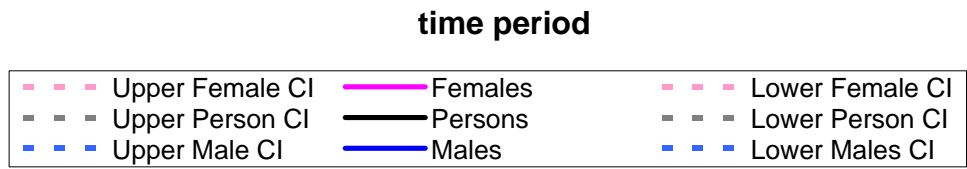
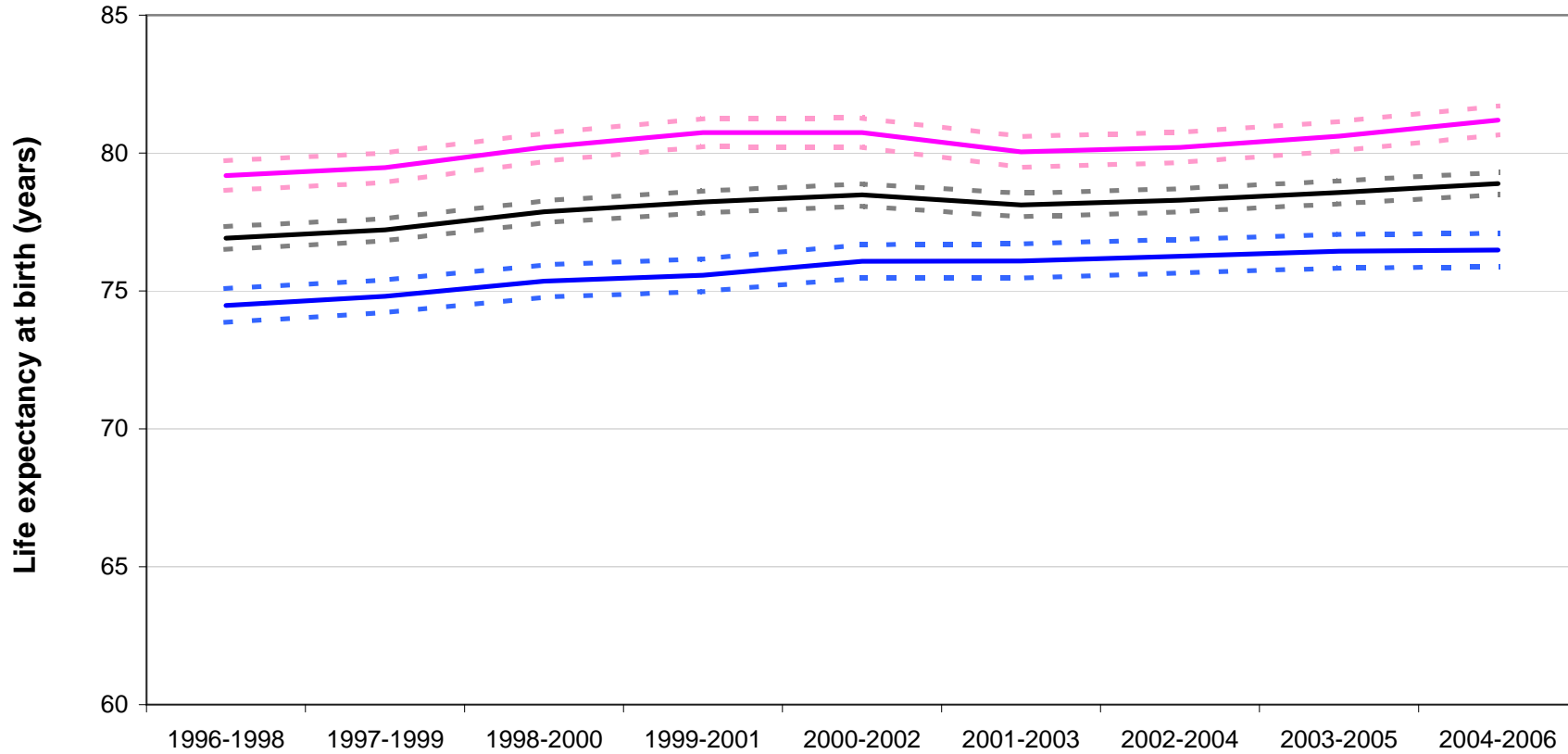


**Life expectancy at birth, with 95% lower and upper confidence intervals, 1996-1998 to 2004-2006
for males, females and all persons in**

Orkney Community Health Partnership

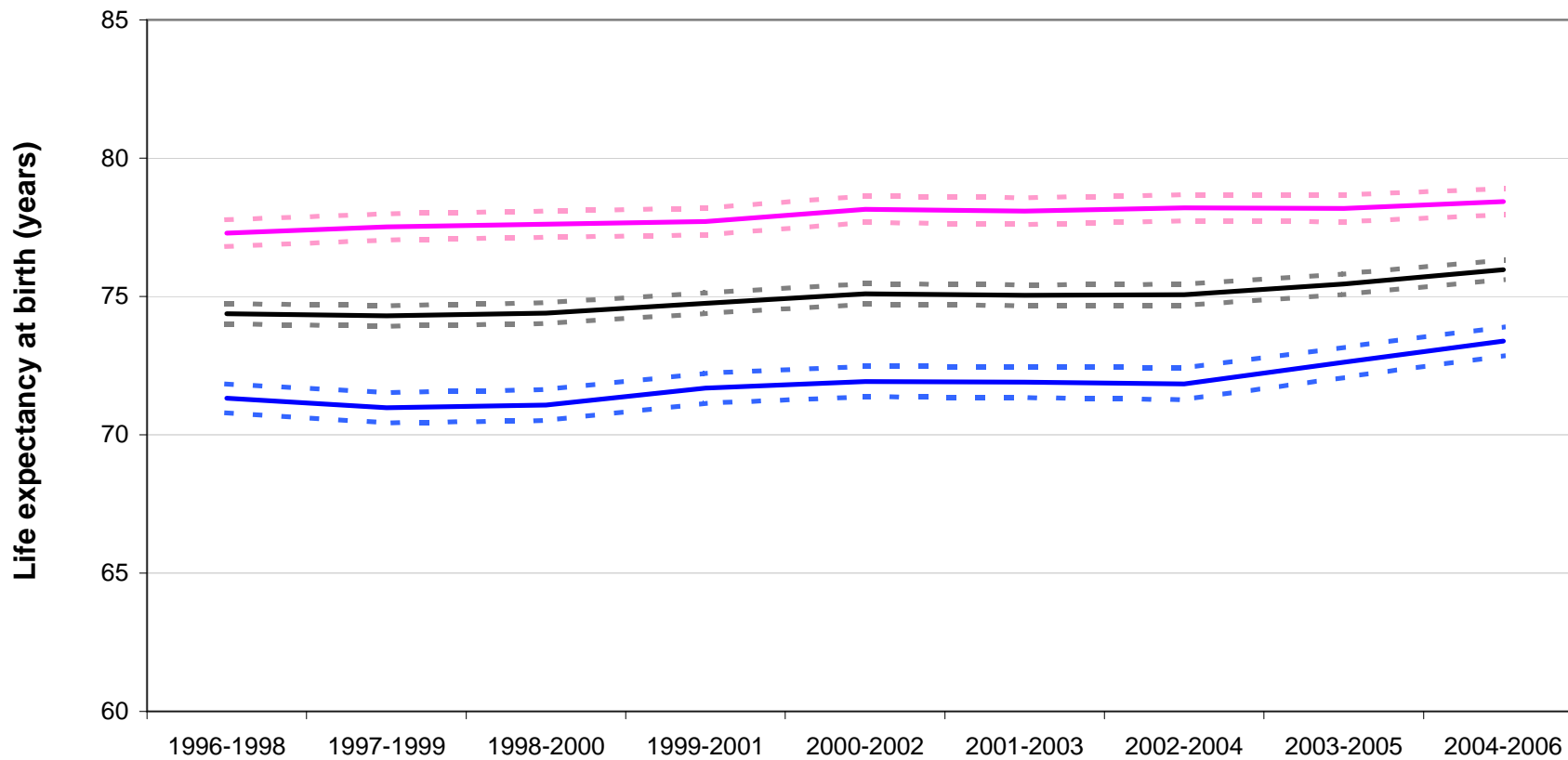


**Life expectancy at birth, with 95% lower and upper confidence intervals, 1996-1998 to 2004-2006
for males, females and all persons in
Perth & Kinross Community Health Partnership**

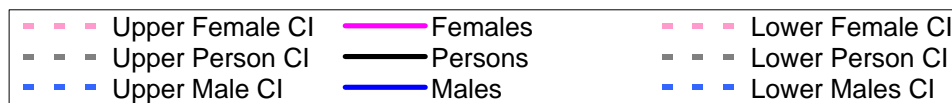


**Life expectancy at birth, with 95% lower and upper confidence intervals, 1996-1998 to 2004-2006
for males, females and all persons in**

Renfrewshire Community Health Partnership

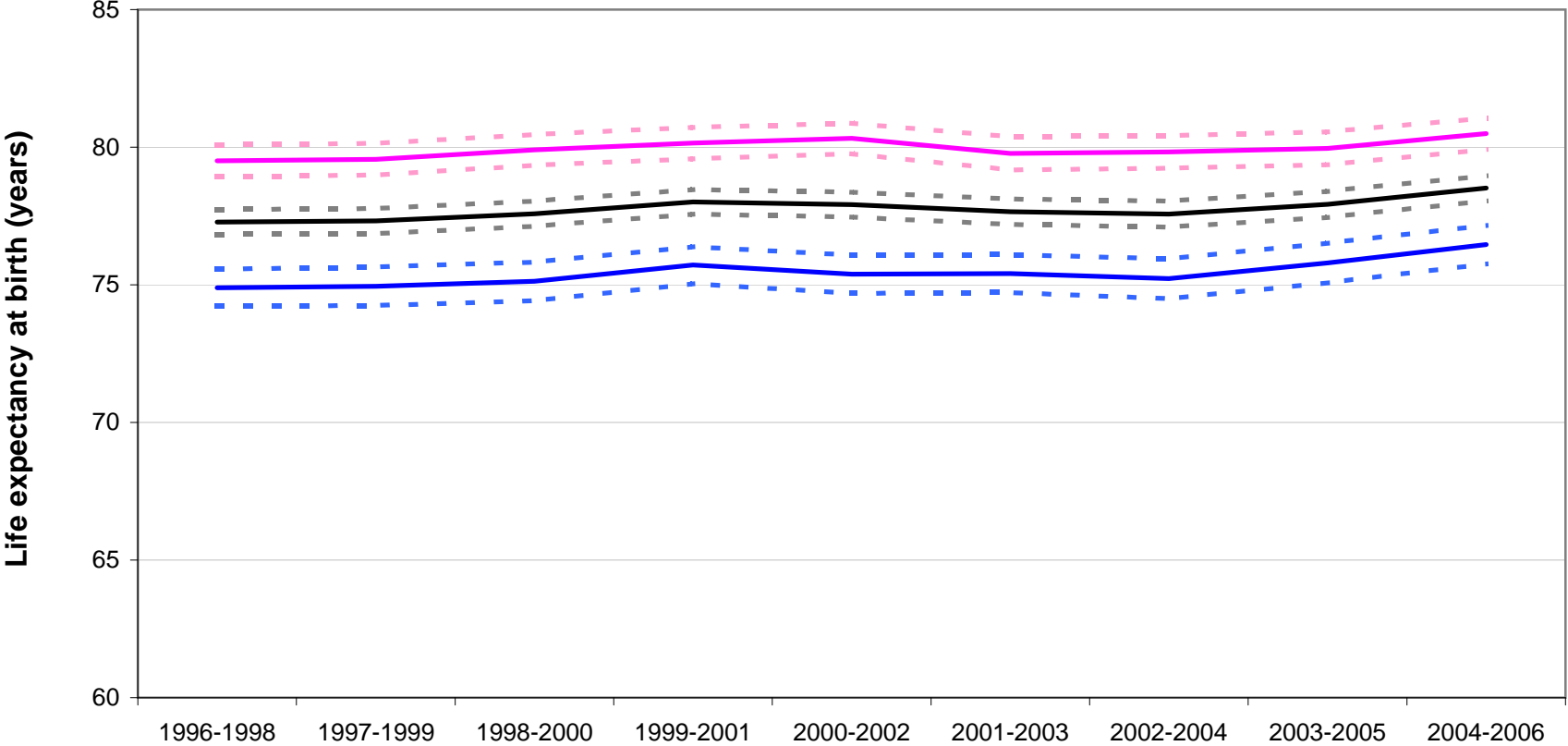


time period



**Life expectancy at birth, with 95% lower and upper confidence intervals, 1996-1998 to 2004-2006
for males, females and all persons in**

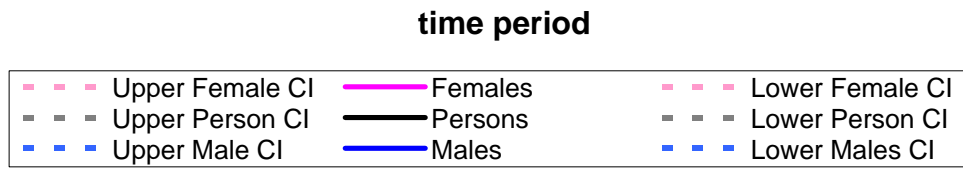
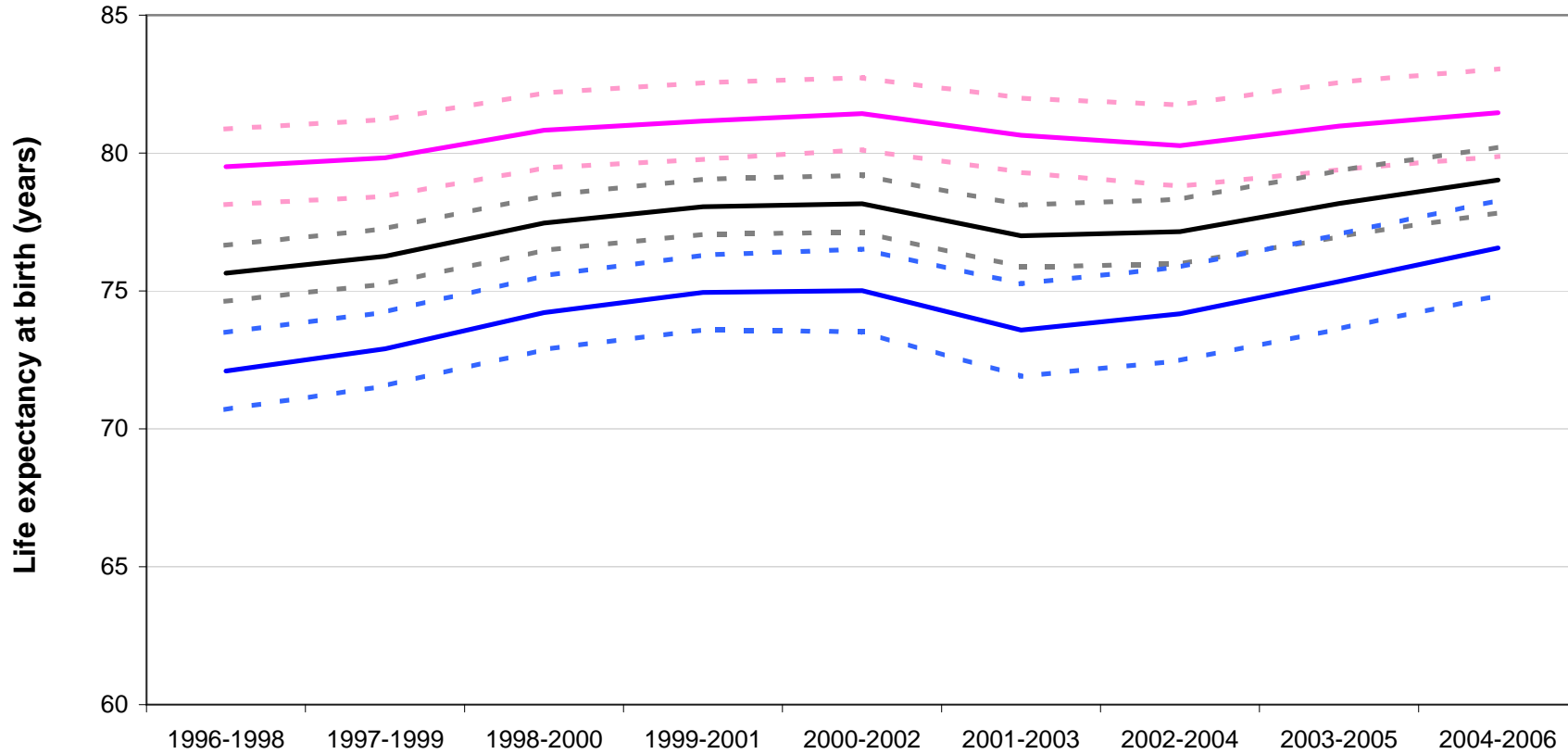
Scottish Borders Community Health & Care Partnership



time period

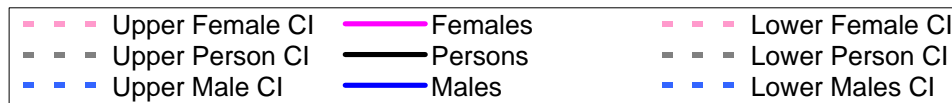
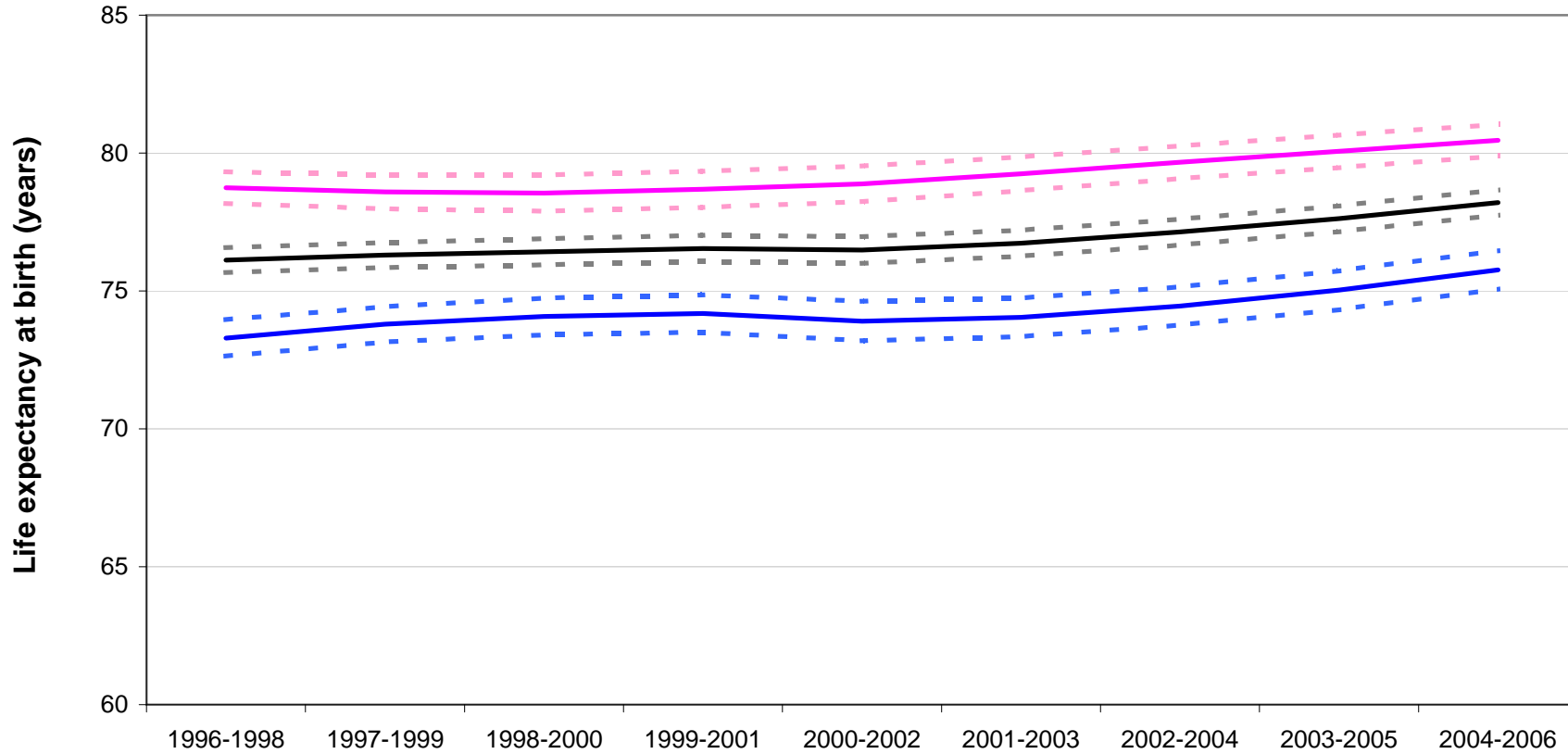


**Life expectancy at birth, with 95% lower and upper confidence intervals, 1996-1998 to 2004-2006
for males, females and all persons in
Shetland Community Health Partnership**



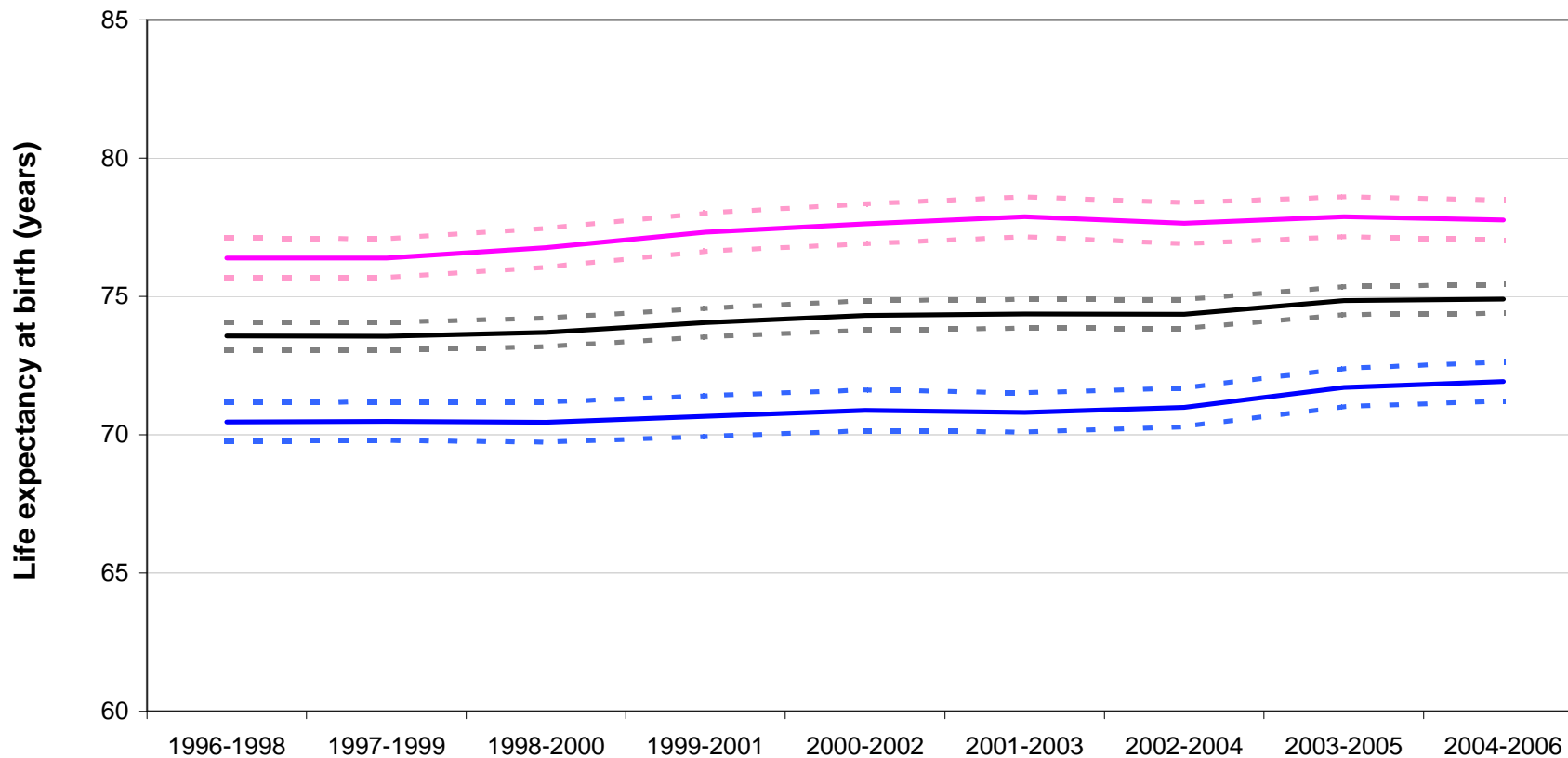
**Life expectancy at birth, with 95% lower and upper confidence intervals, 1996-1998 to 2004-2006
for males, females and all persons in**

South Ayrshire Community Health Partnership

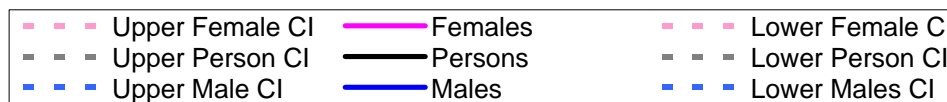


**Life expectancy at birth, with 95% lower and upper confidence intervals, 1996-1998 to 2004-2006
for males, females and all persons in**

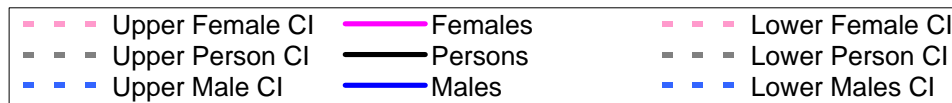
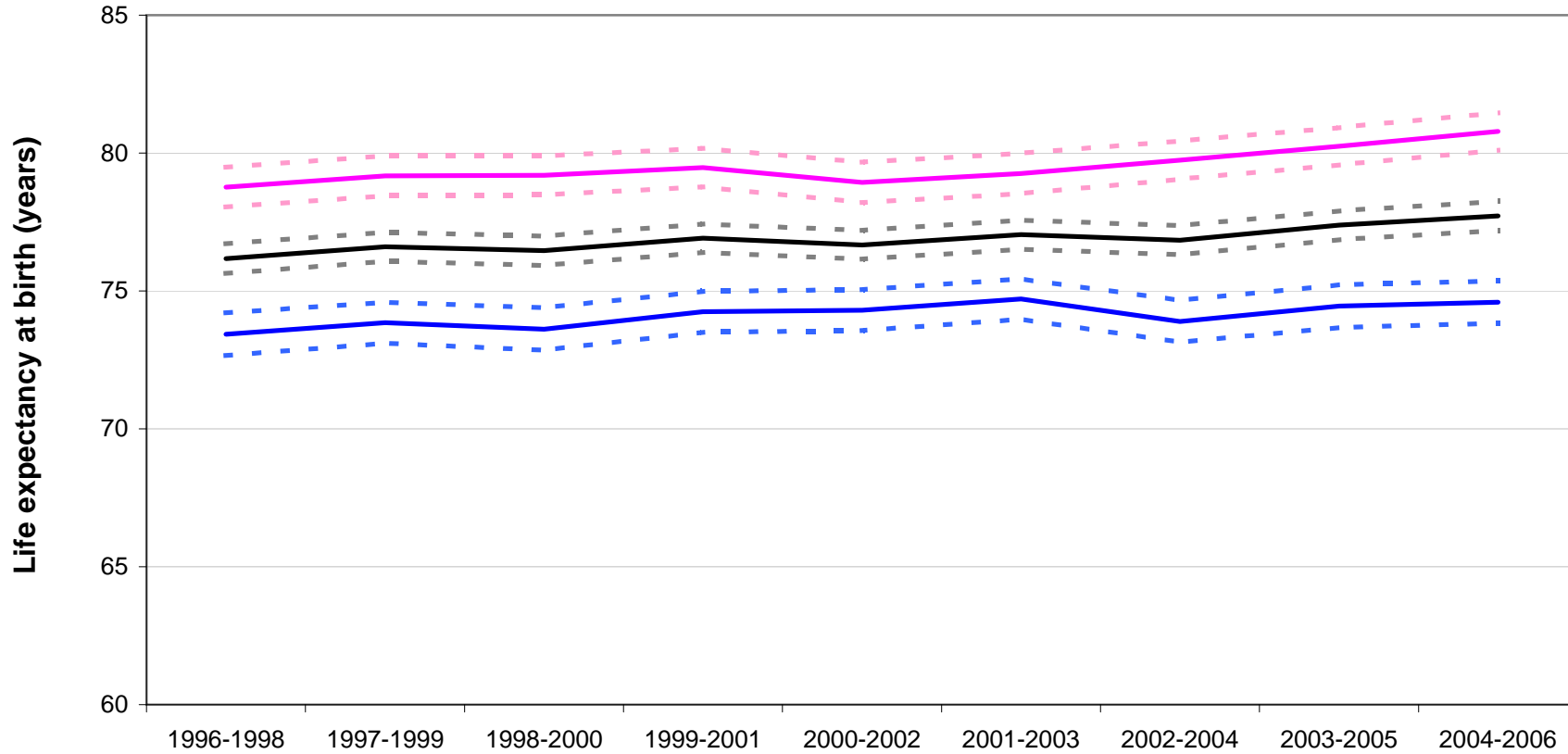
South East Glasgow Community Health & Care Partnership



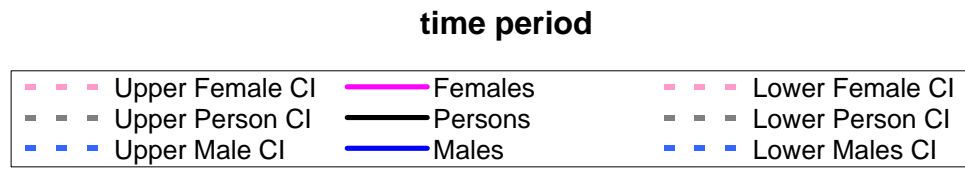
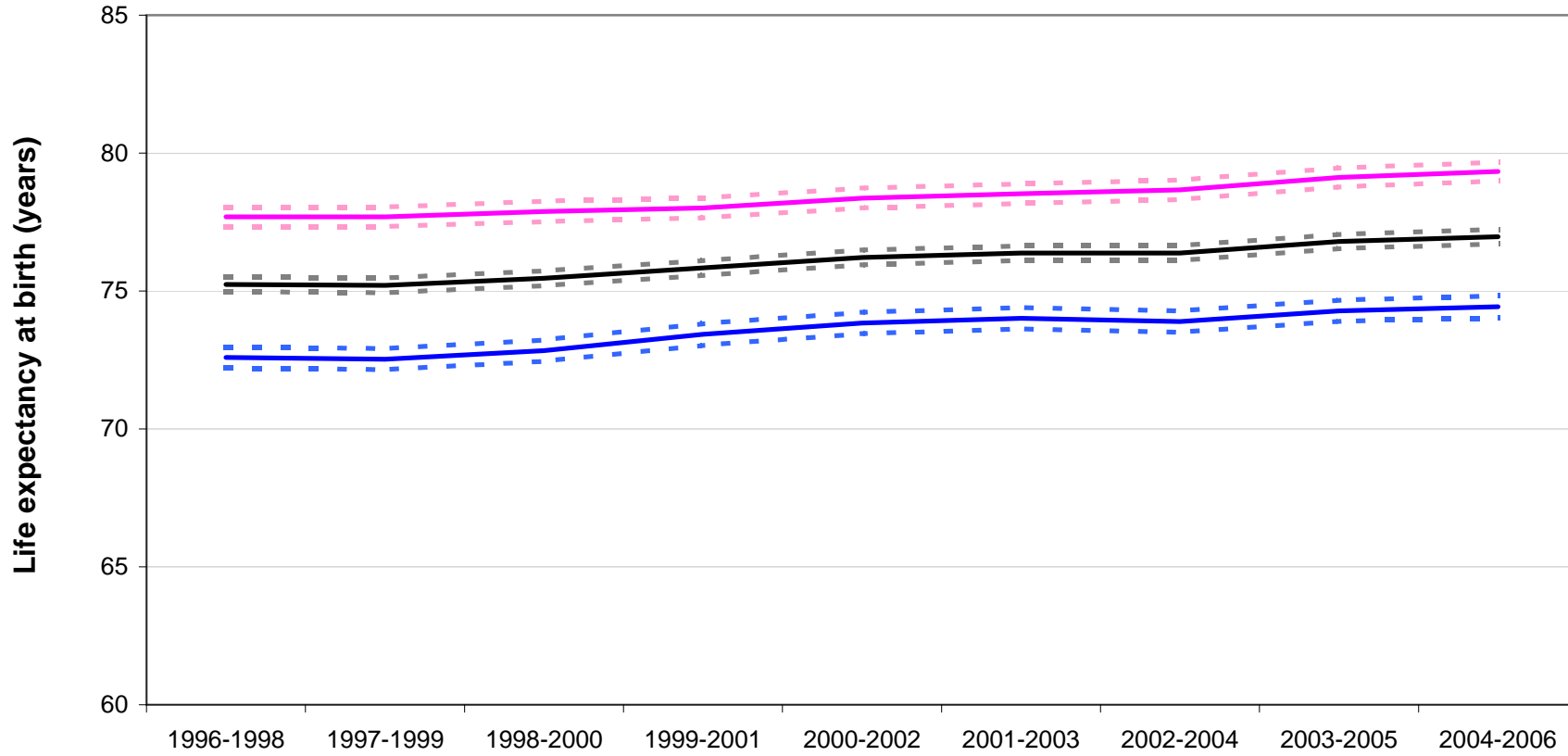
time period



**Life expectancy at birth, with 95% lower and upper confidence intervals, 1996-1998 to 2004-2006
for males, females and all persons in
South East Highland Community Health Partnership**

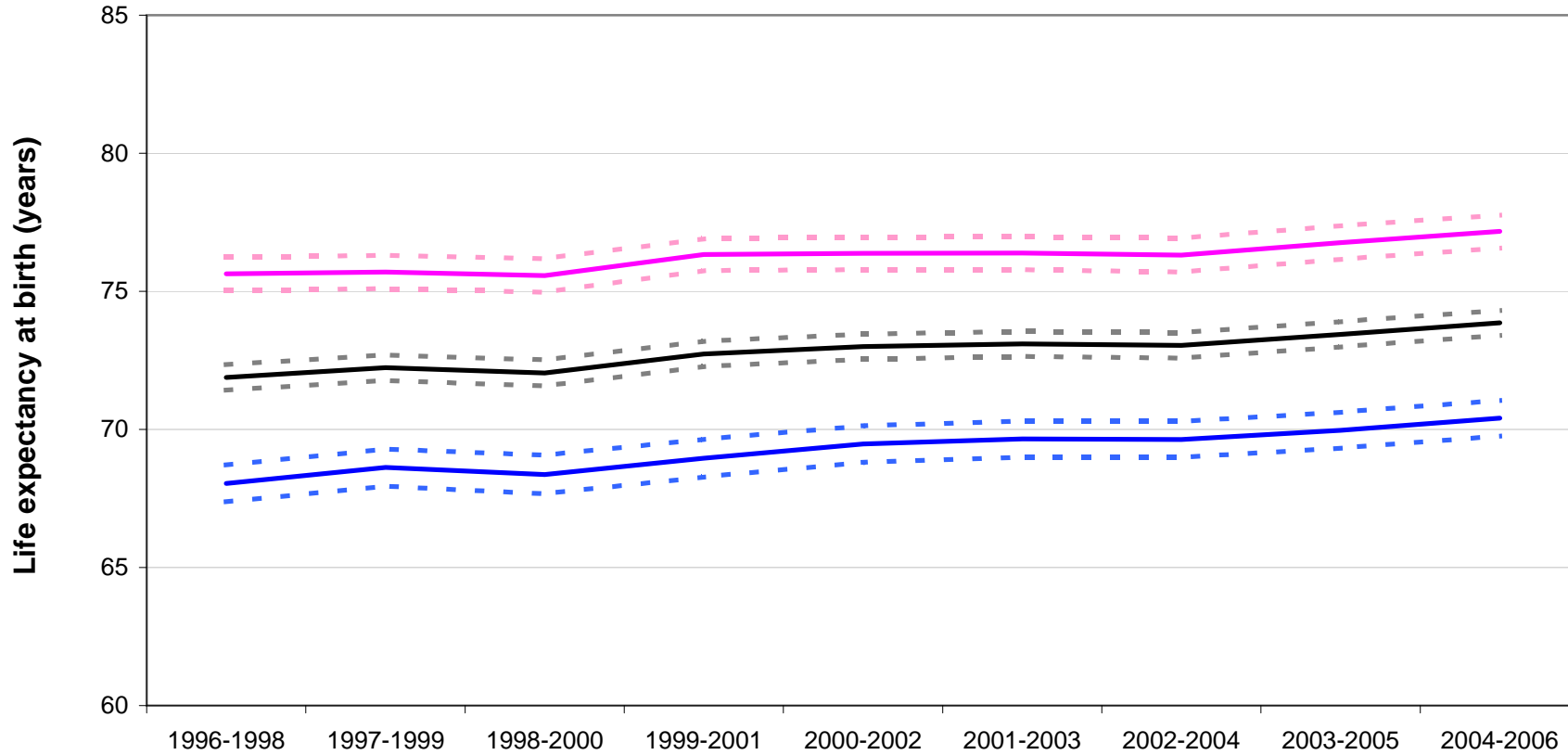


**Life expectancy at birth, with 95% lower and upper confidence intervals, 1996-1998 to 2004-2006
for males, females and all persons in
South Lanarkshire Community Health Partnership**

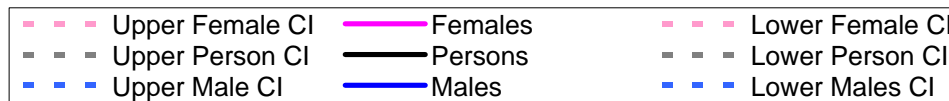


**Life expectancy at birth, with 95% lower and upper confidence intervals, 1996-1998 to 2004-2006
for males, females and all persons in**

South West Glasgow Community Health & Care Partnership

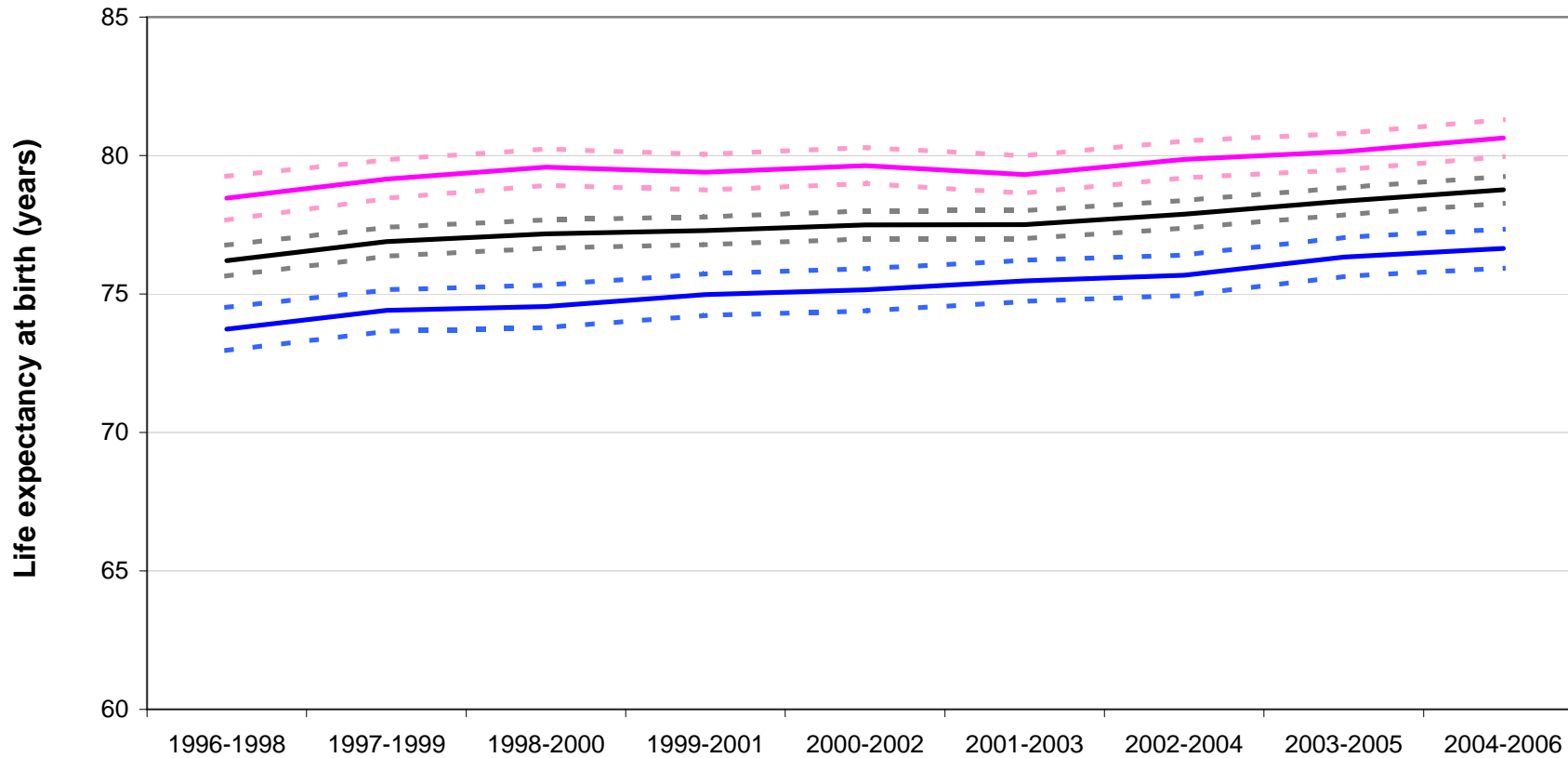


time period

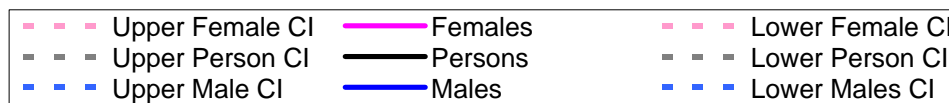


**Life expectancy at birth, with 95% lower and upper confidence intervals, 1996-1998 to 2004-2006
for males, females and all persons in**

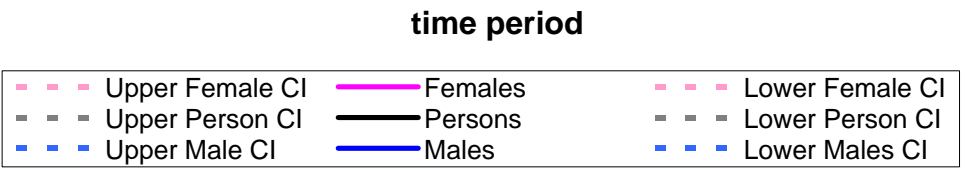
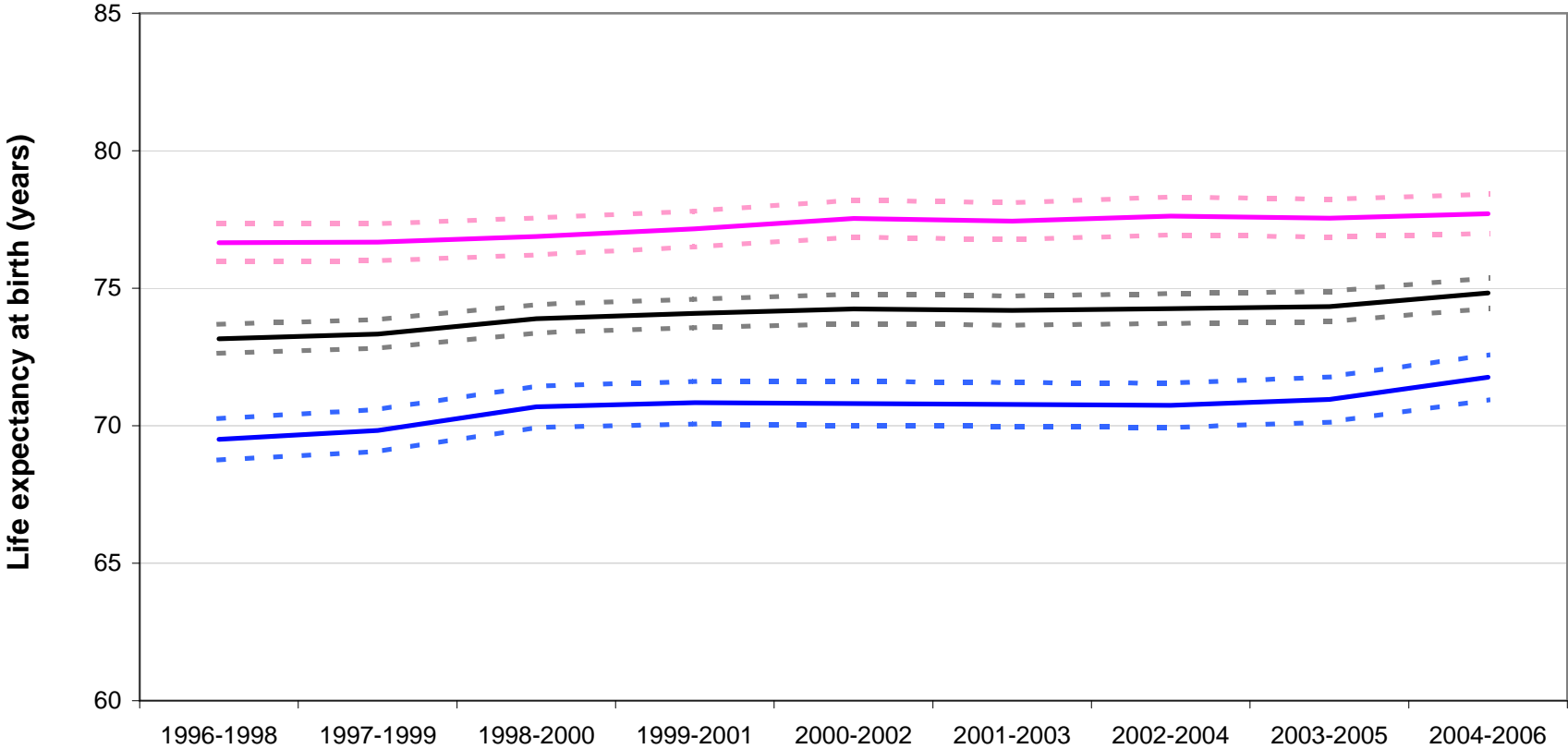
Stirling Community Health Partnership



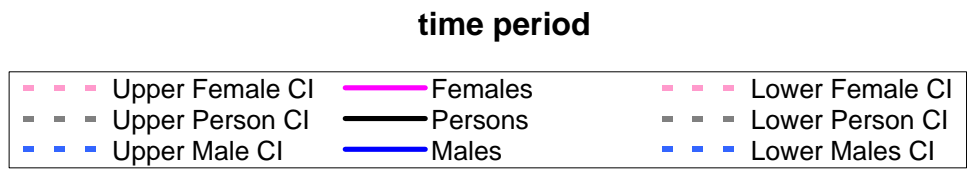
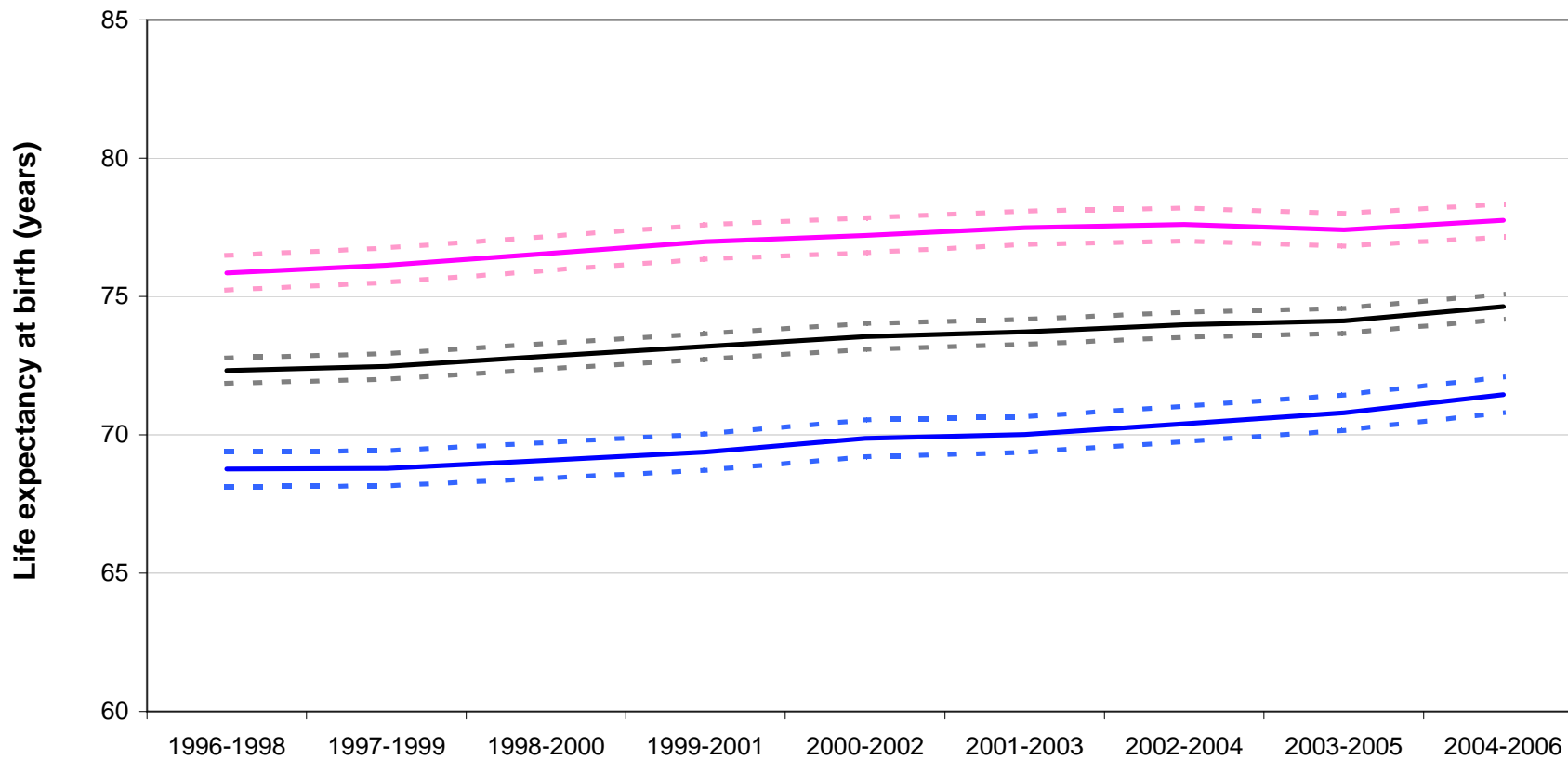
time period



Life expectancy at birth, with 95% lower and upper confidence intervals, 1996-1998 to 2004-2006
for males, females and all persons in
 West Dunbartonshire Community Health Partnership

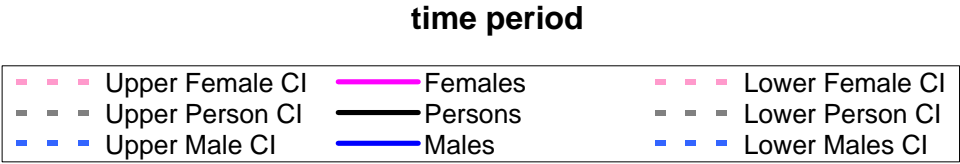
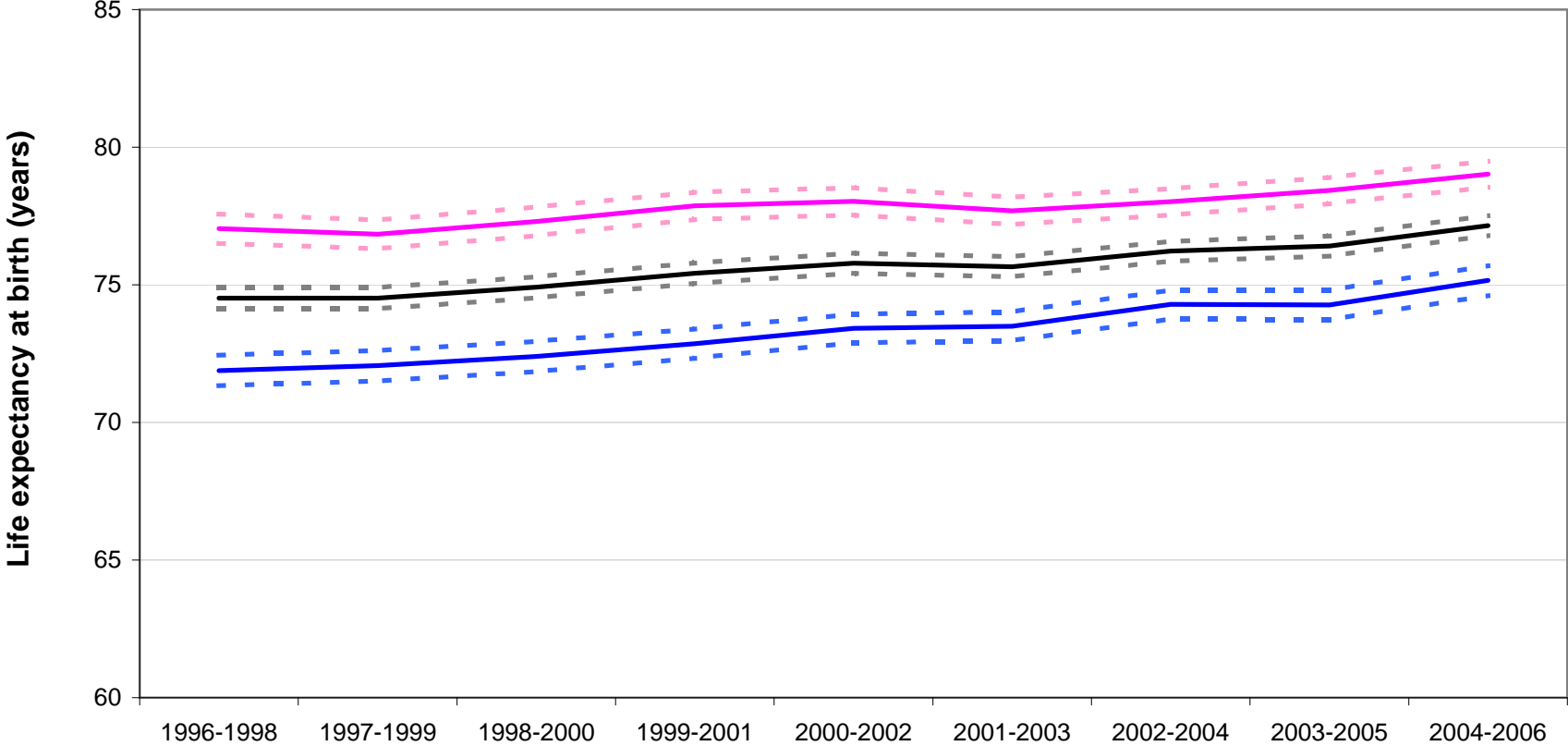


**Life expectancy at birth, with 95% lower and upper confidence intervals, 1996-1998 to 2004-2006
for males, females and all persons in
West Glasgow Community Health & Care Partnership**



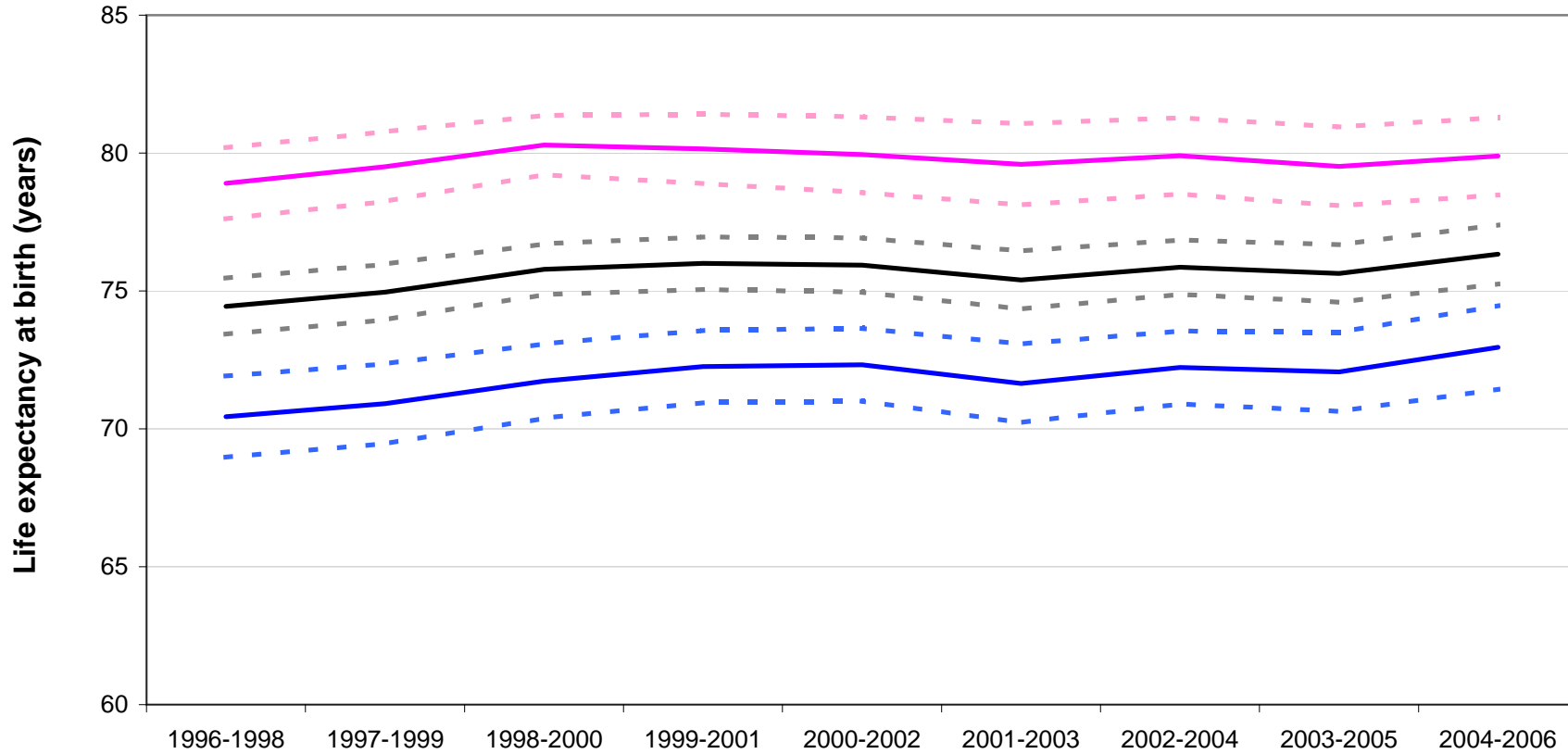
**Life expectancy at birth, with 95% lower and upper confidence intervals, 1996-1998 to 2004-2006
for males, females and all persons in**

West Lothian Community Health Partnership



**Life expectancy at birth, with 95% lower and upper confidence intervals, 1996-1998 to 2004-2006
for males, females and all persons in**

Western Isles Community Health Partnership



time period

