

**Figure 4 Life expectancy at birth, with 95% lower and upper confidence intervals, 1996-1998 to 2005-2007 for males and females in:
Scotland**

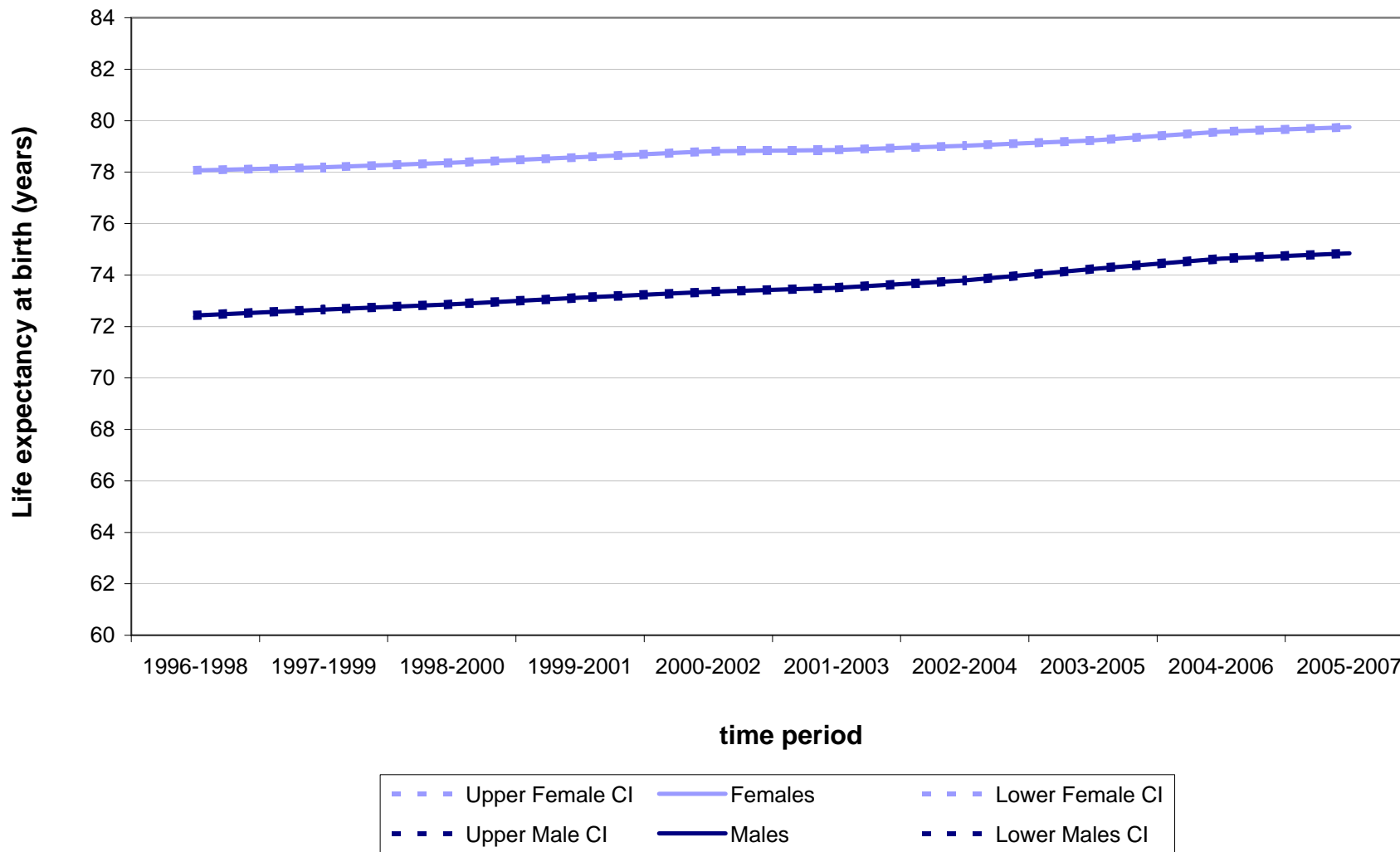


Figure 4 Life expectancy at birth, with 95% lower and upper confidence intervals, 1996-1998 to 2005-2007 for males and females in Aberdeen City Community Health Partnership

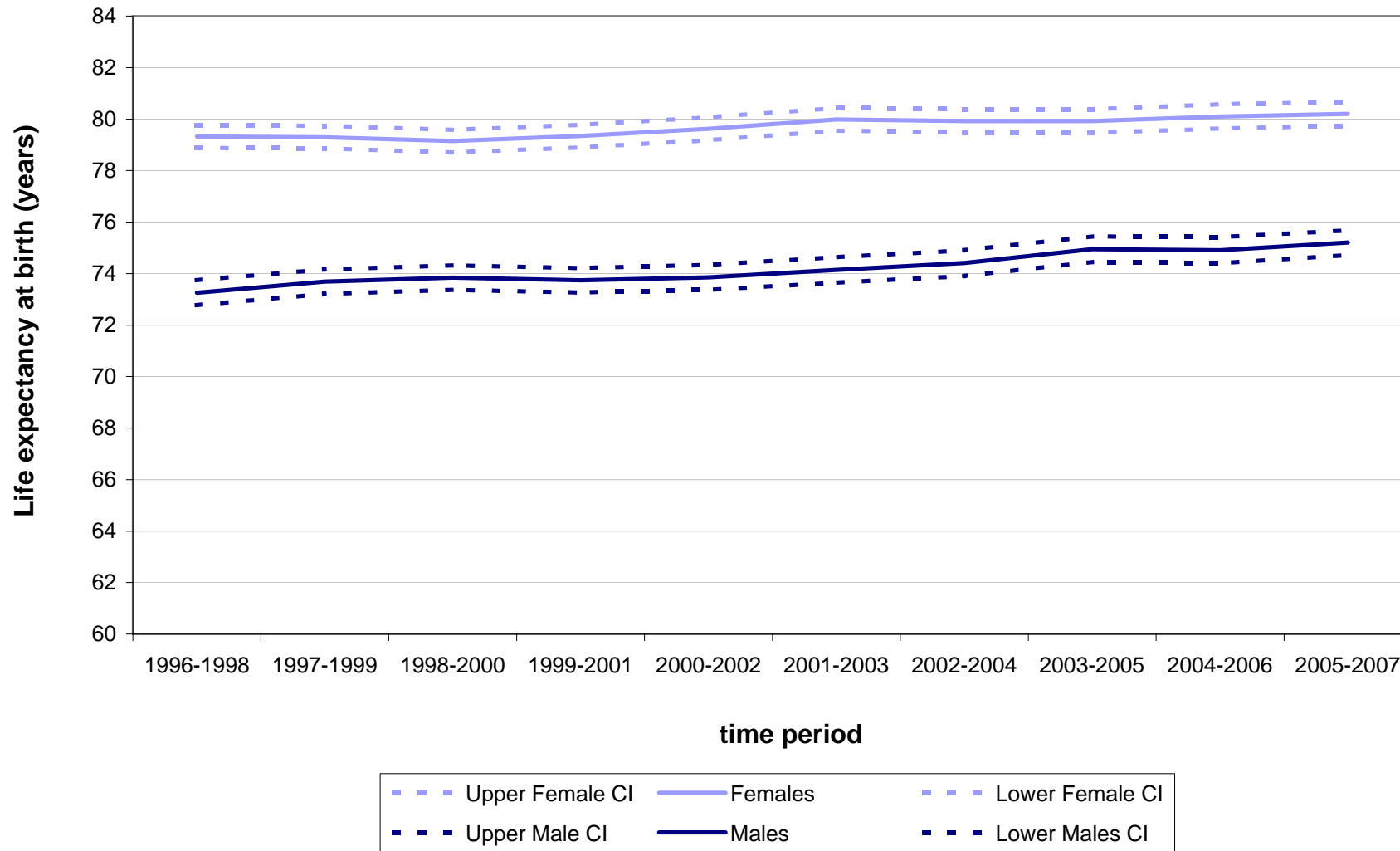


Figure 4 Life expectancy at birth, with 95% lower and upper confidence intervals, 1996-1998 to 2005-2007 for males and females in Aberdeenshire Community Health Partnership

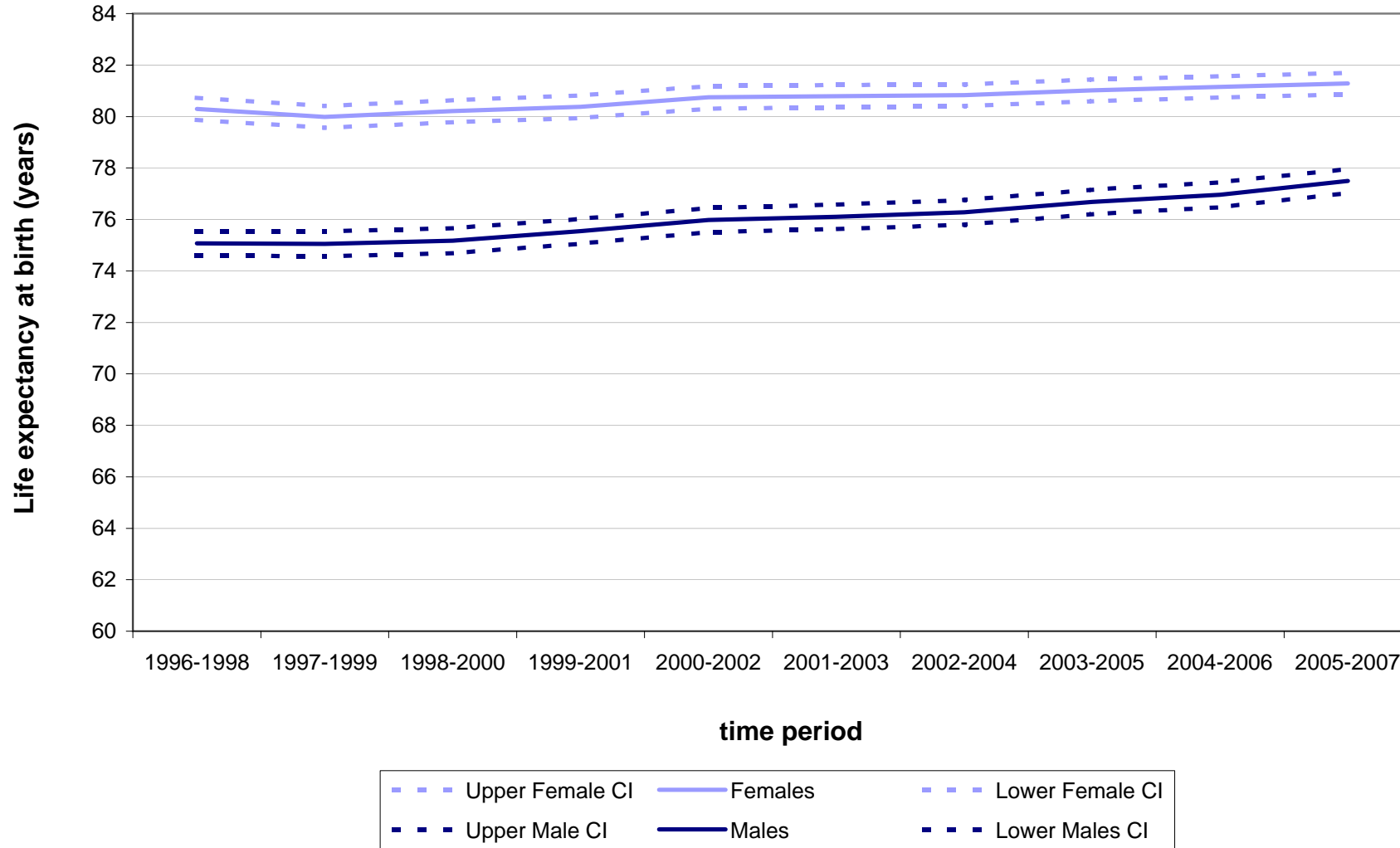


Figure 4 Life expectancy at birth, with 95% lower and upper confidence intervals, 1996-1998 to 2005-2007 for males and females in Angus Community Health Partnership

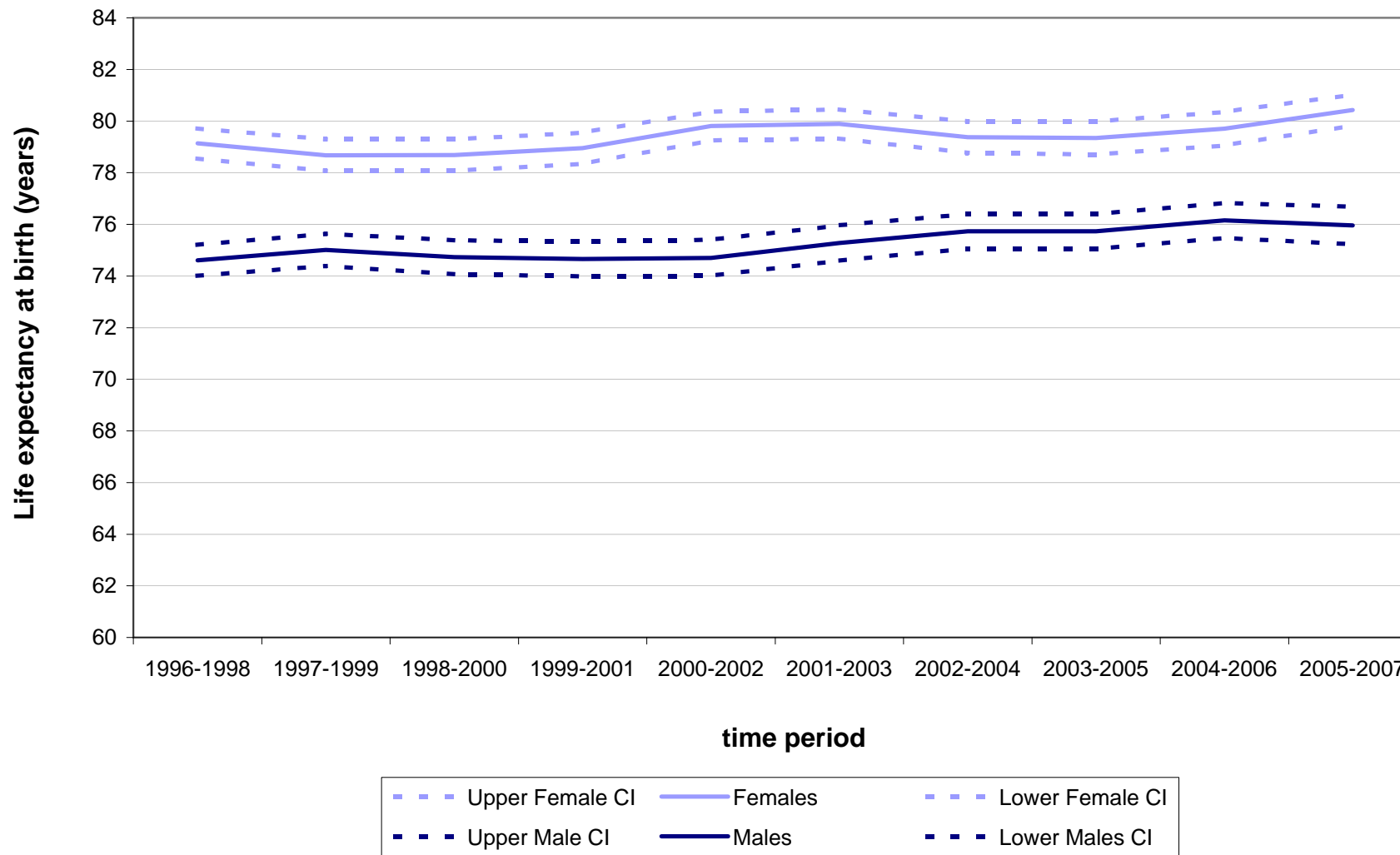


Figure 4 Life expectancy at birth, with 95% lower and upper confidence intervals, 1996-1998 to 2005-2007 for males and females in Argyll & Bute Community Health Partnership

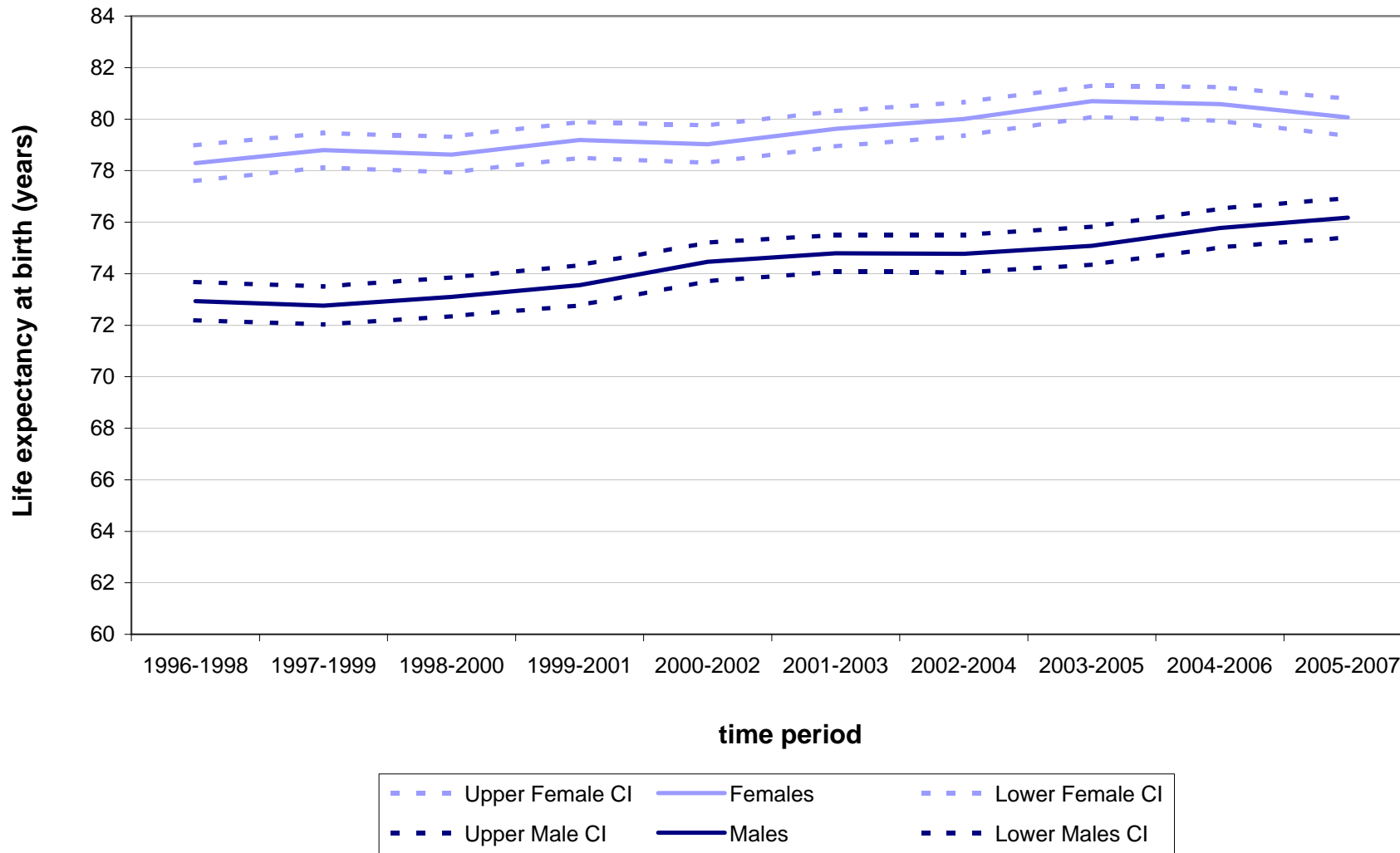


Figure 4 Life expectancy at birth, with 95% lower and upper confidence intervals, 1996-1998 to 2005-2007 for males and females in Clackmannanshire Community Health Partnership

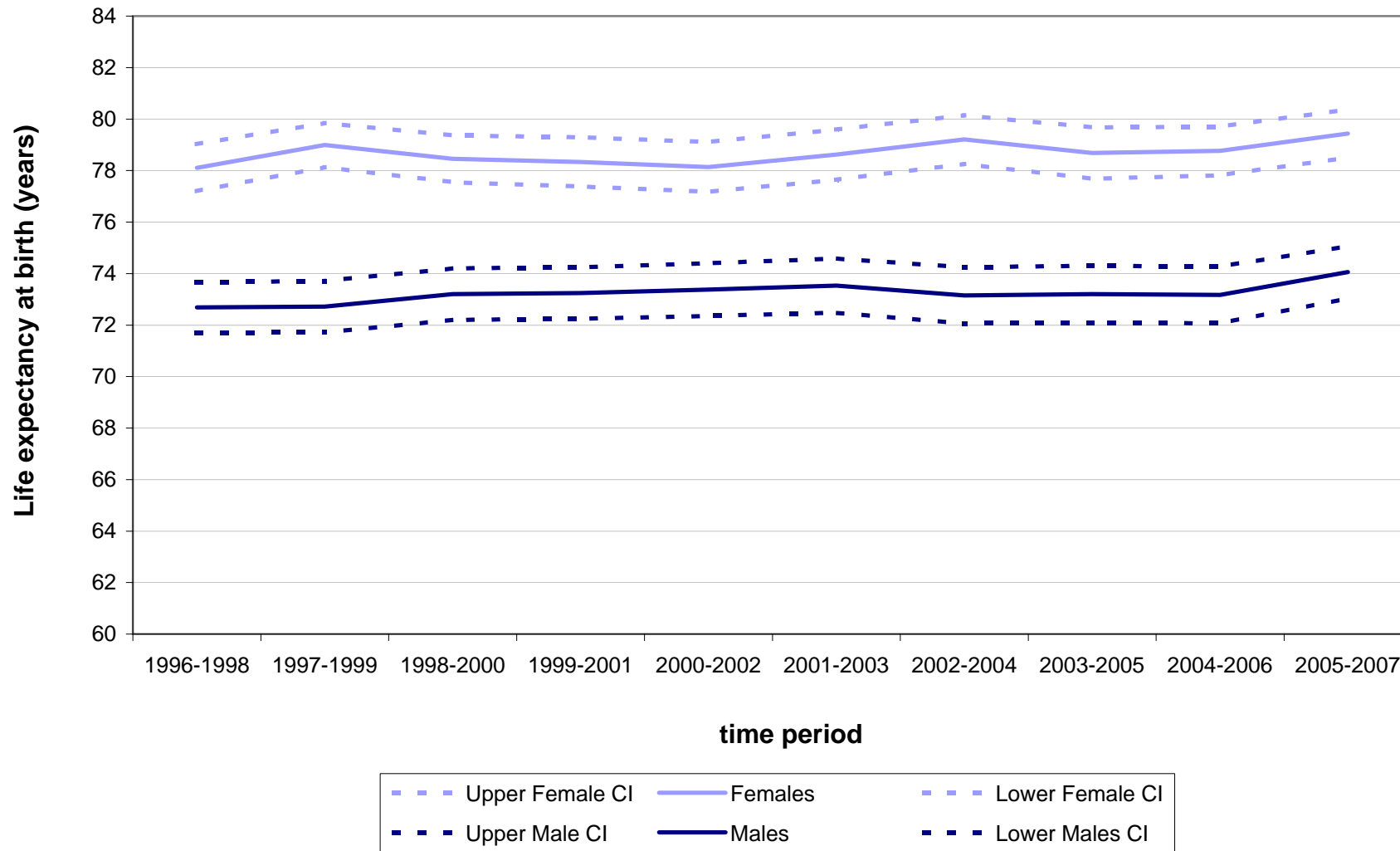


Figure 4 Life expectancy at birth, with 95% lower and upper confidence intervals, 1996-1998 to 2005-2007 for males and females in Dumfries & Galloway Community Health Partnership

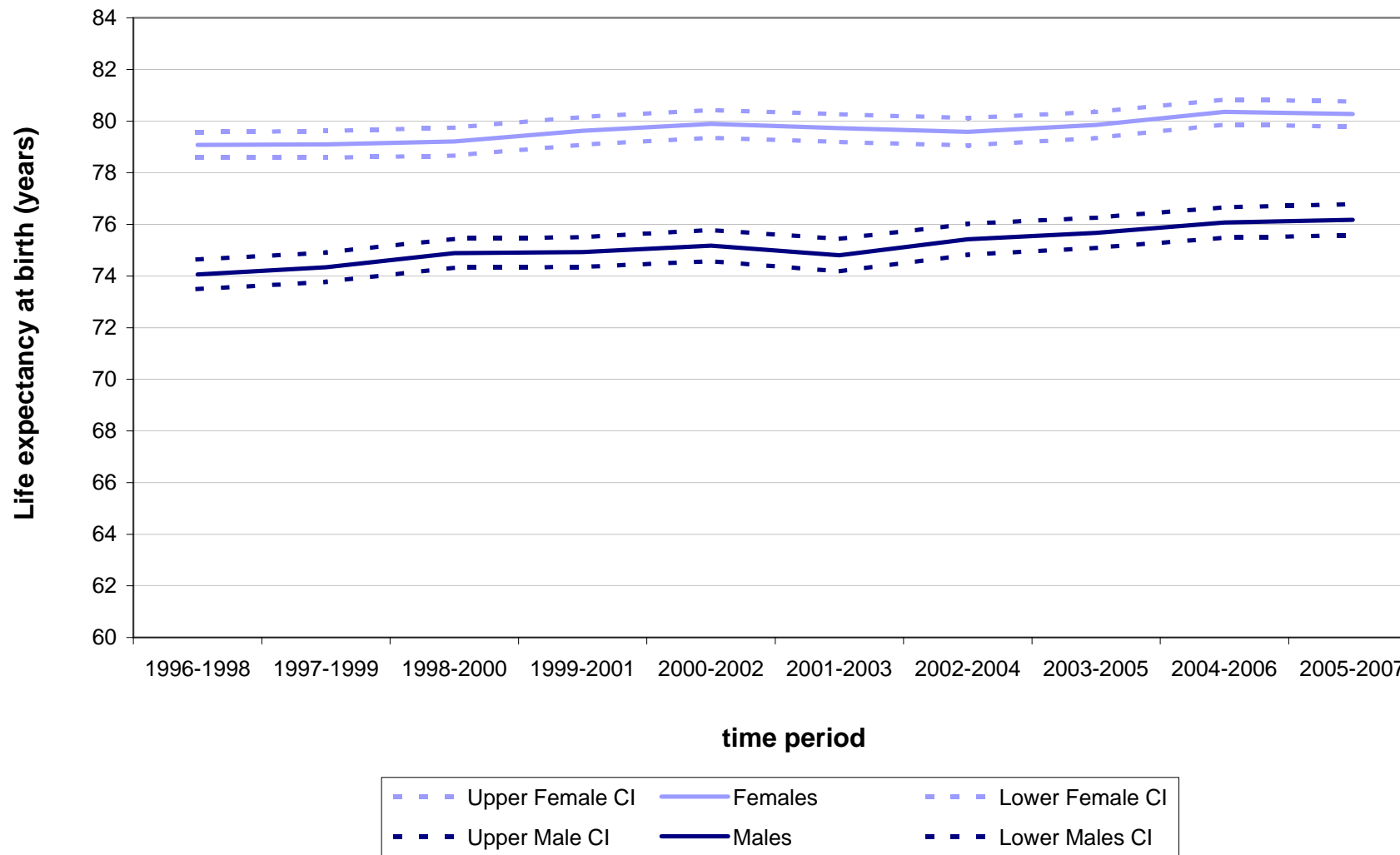


Figure 4 Life expectancy at birth, with 95% lower and upper confidence intervals, 1996-1998 to 2005-2007 for males and females in Dundee City Community Health Partnership

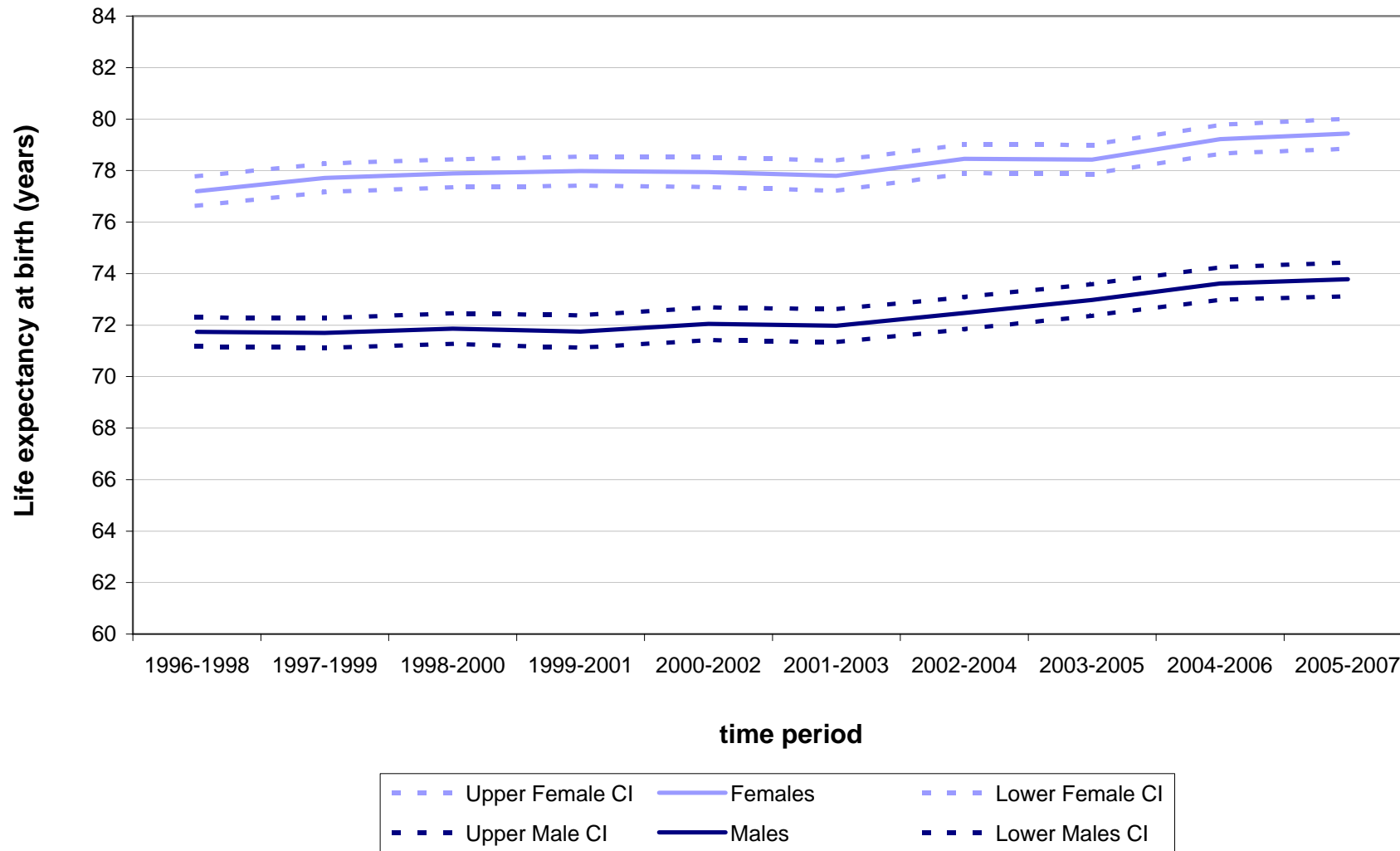


Figure 4 Life expectancy at birth, with 95% lower and upper confidence intervals, 1996-1998 to 2005-2007 for males and females in Dunfermline & West Fife Community Health Partnership

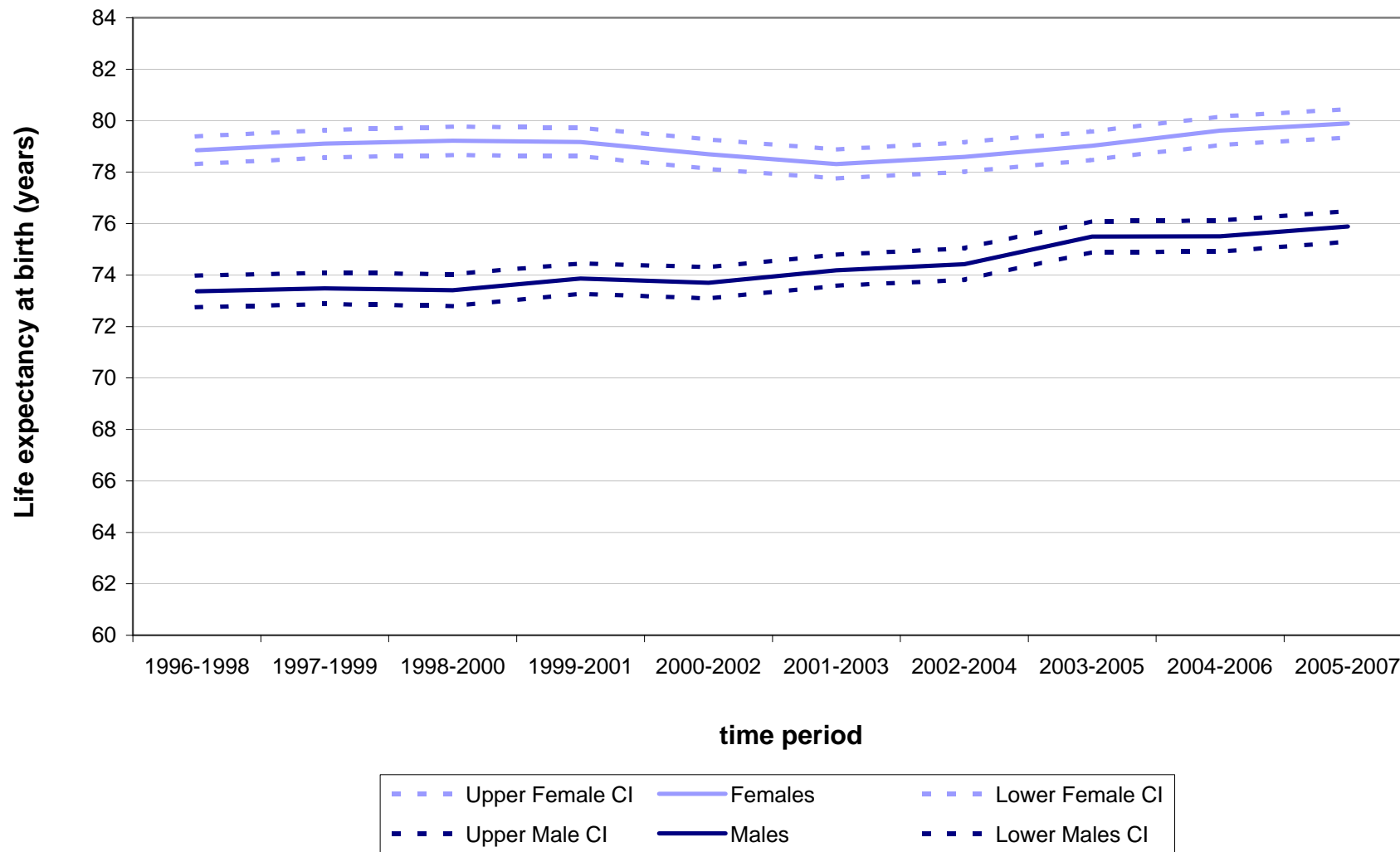


Figure 4 Life expectancy at birth, with 95% lower and upper confidence intervals, 1996-1998 to 2005-2007 for males and females in East Ayrshire Community Health Partnership

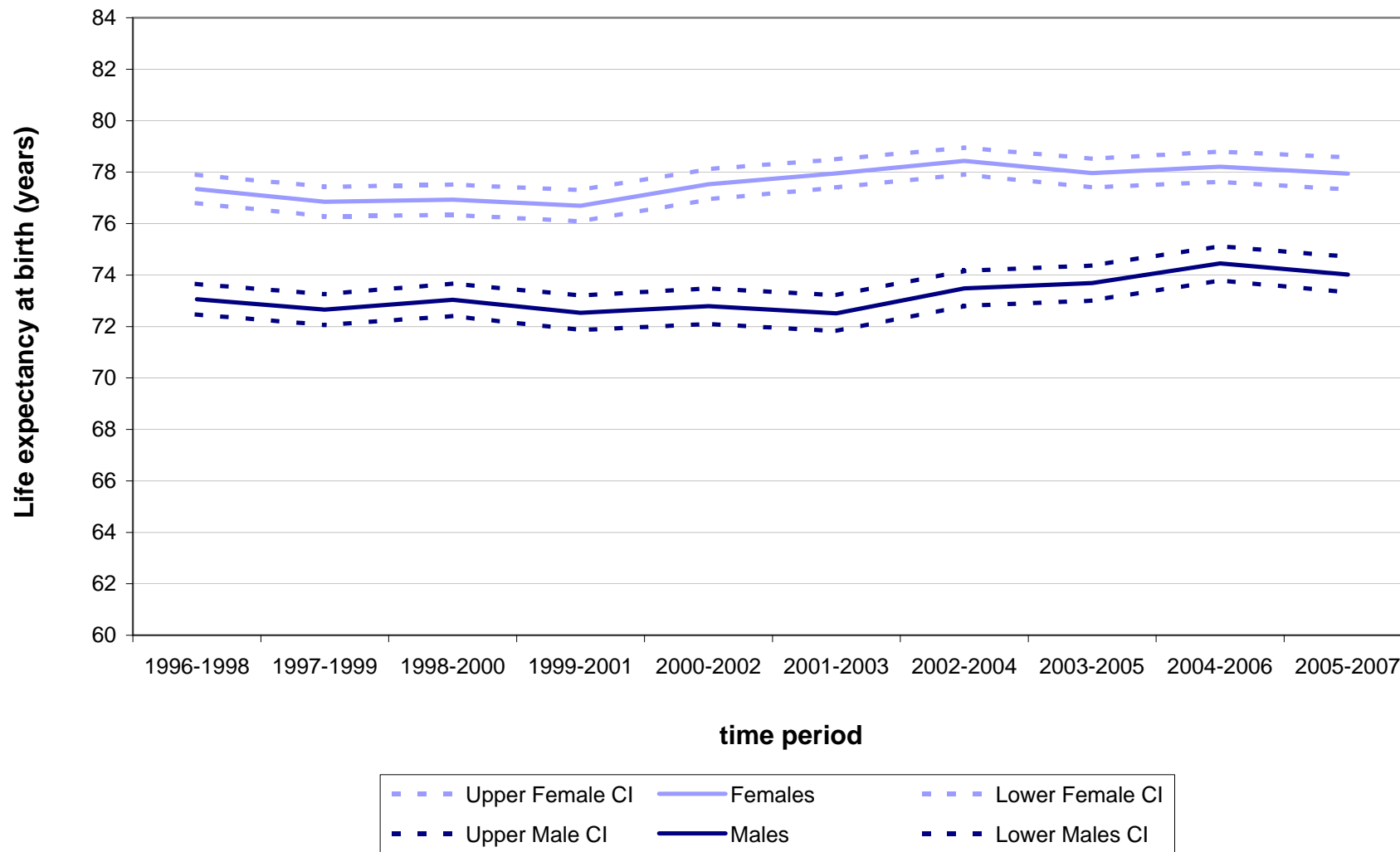


Figure 4 Life expectancy at birth, with 95% lower and upper confidence intervals, 1996-1998 to 2005-2007 for males and females in East Dunbartonshire Community Health Partnership

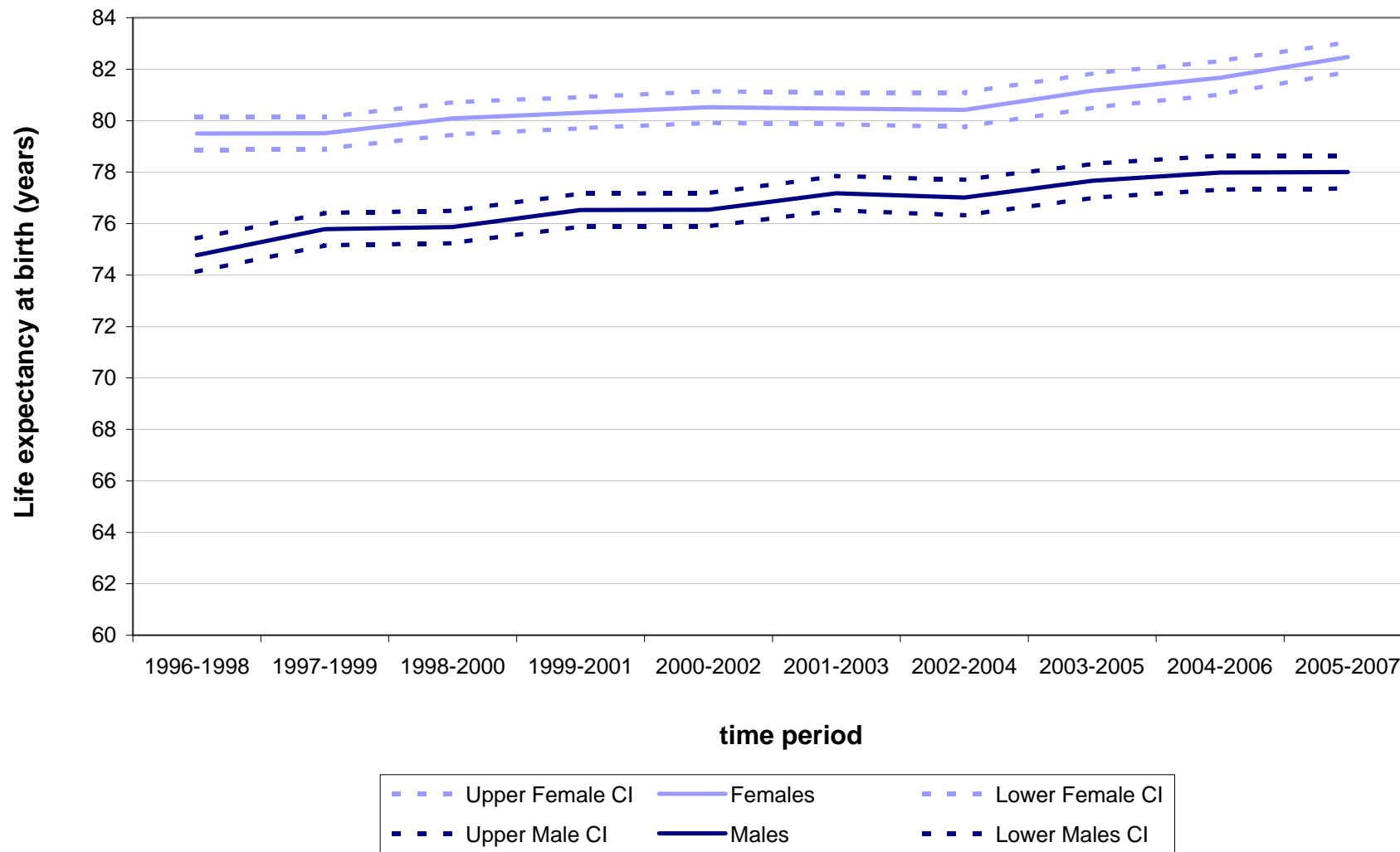


Figure 4 Life expectancy at birth, with 95% lower and upper confidence intervals, 1996-1998 to 2005-2007 for males and females in East Glasgow Community Health & Care Partnership

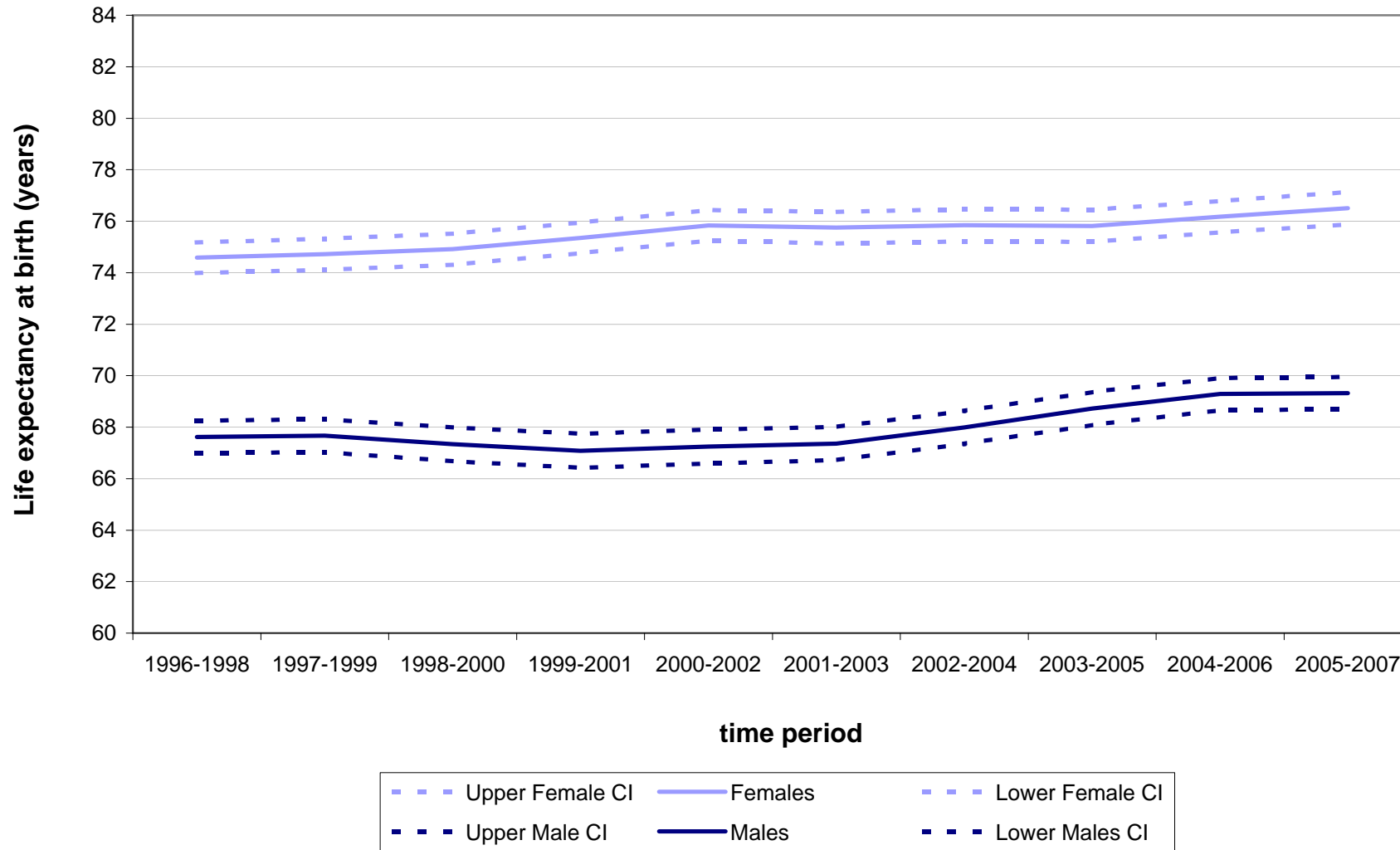


Figure 4 Life expectancy at birth, with 95% lower and upper confidence intervals, 1996-1998 to 2005-2007 for males and females in East Lothian Community Health Partnership

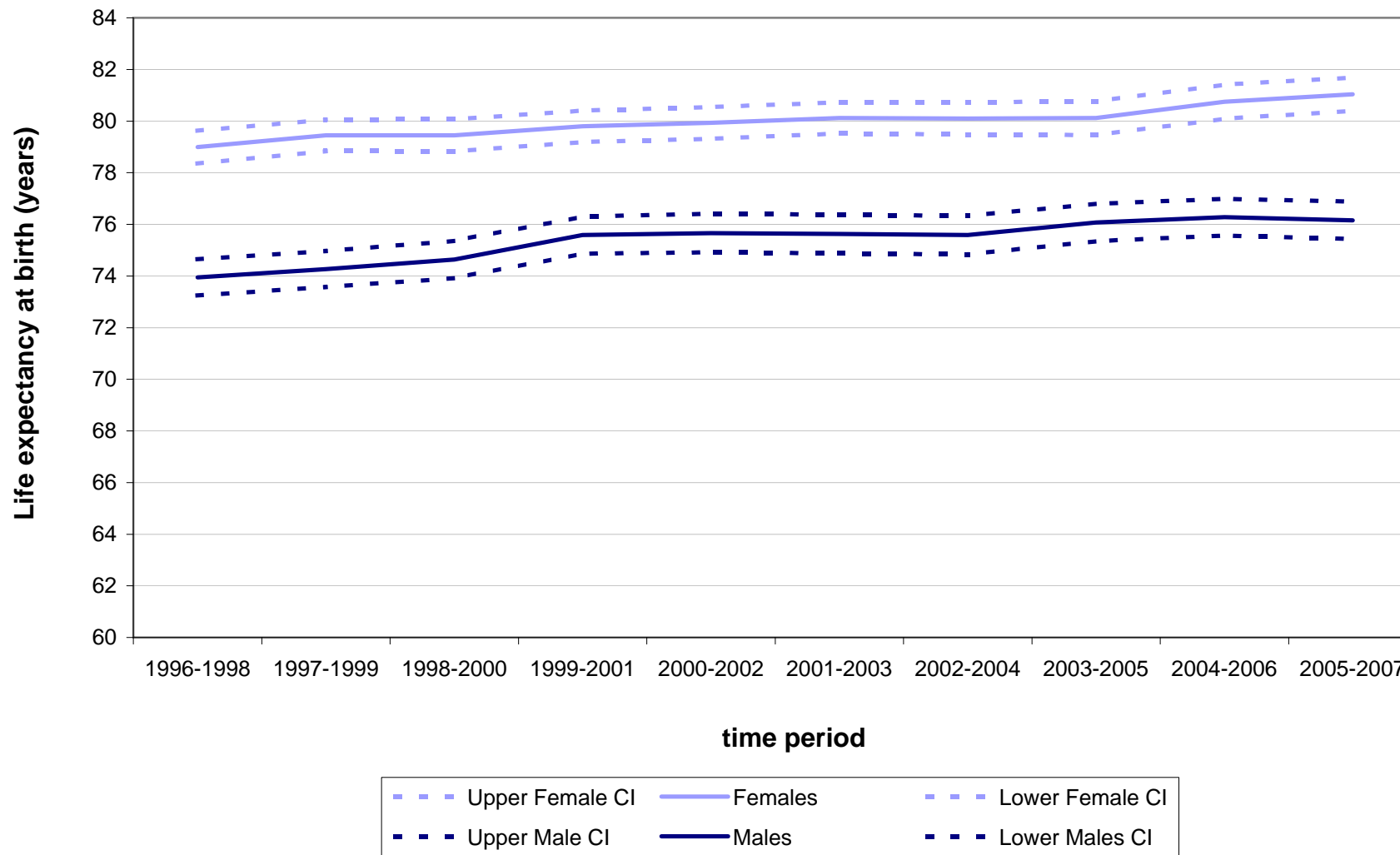


Figure 4 Life expectancy at birth, with 95% lower and upper confidence intervals, 1996-1998 to 2005-2007 for males and females in East Renfrewshire Community Health & Care Partnership

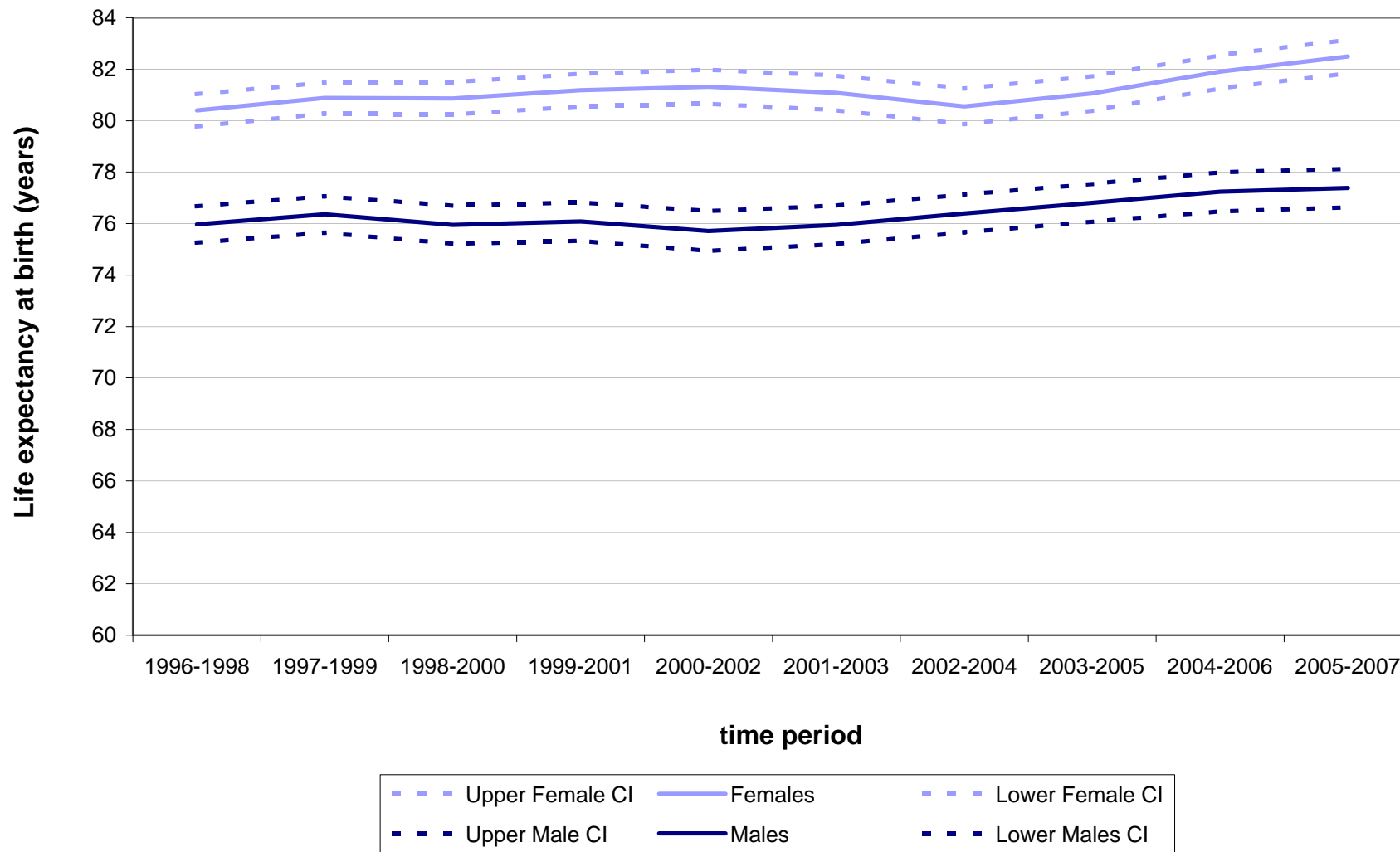


Figure 4 Life expectancy at birth, with 95% lower and upper confidence intervals, 1996-1998 to 2005-2007 for males and females in Edinburgh Community Health Partnership

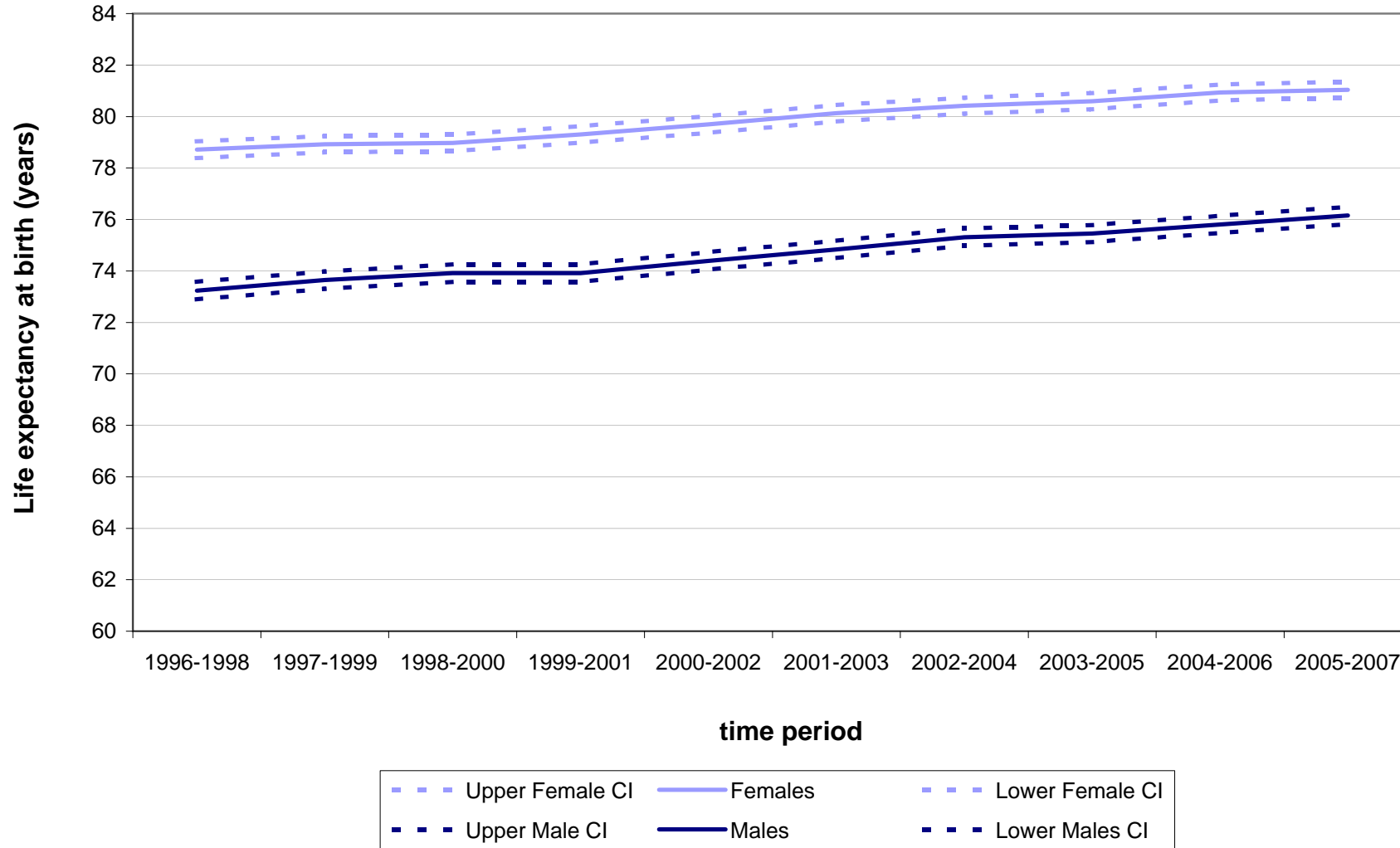


Figure 4 Life expectancy at birth, with 95% lower and upper confidence intervals, 1996-1998 to 2005-2007 for males and females in Falkirk Community Health Partnership

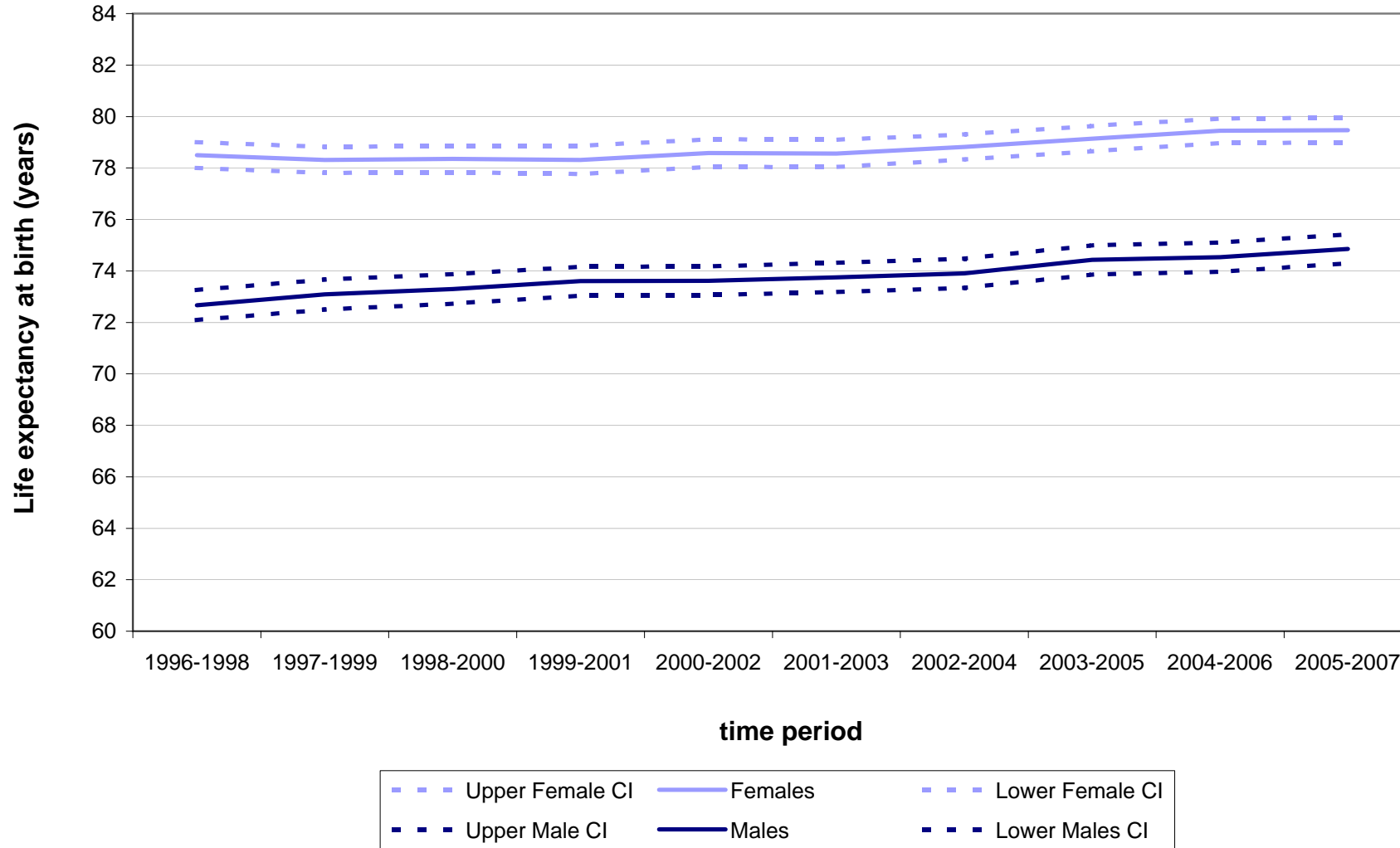


Figure 4 Life expectancy at birth, with 95% lower and upper confidence intervals, 1996-1998 to 2005-2007 for males and females in Glenrothes & North East Fife Community Health Partnership

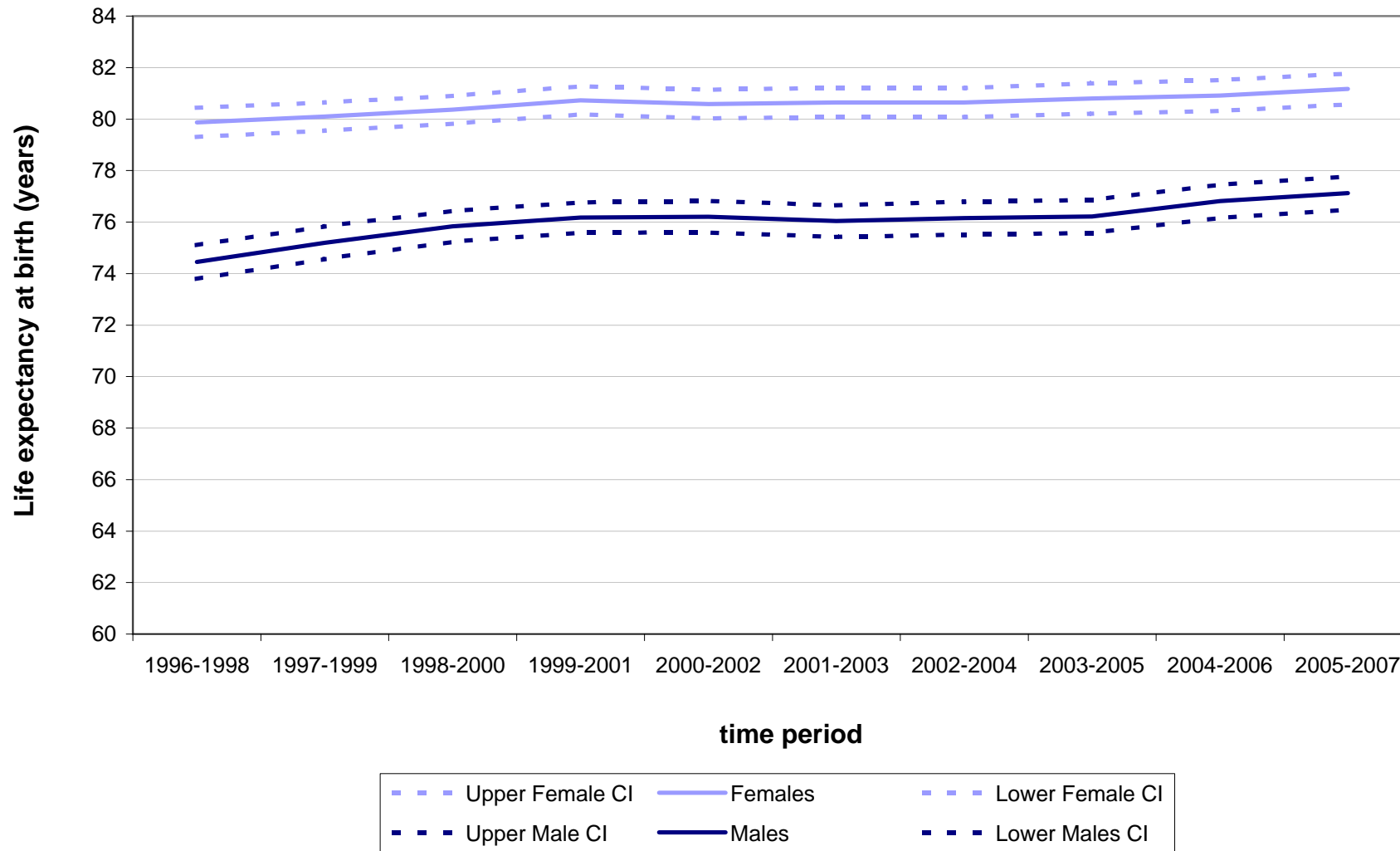


Figure 4 Life expectancy at birth, with 95% lower and upper confidence intervals, 1996-1998 to 2005-2007 for males and females in Inverclyde Community Health & Care Partnership

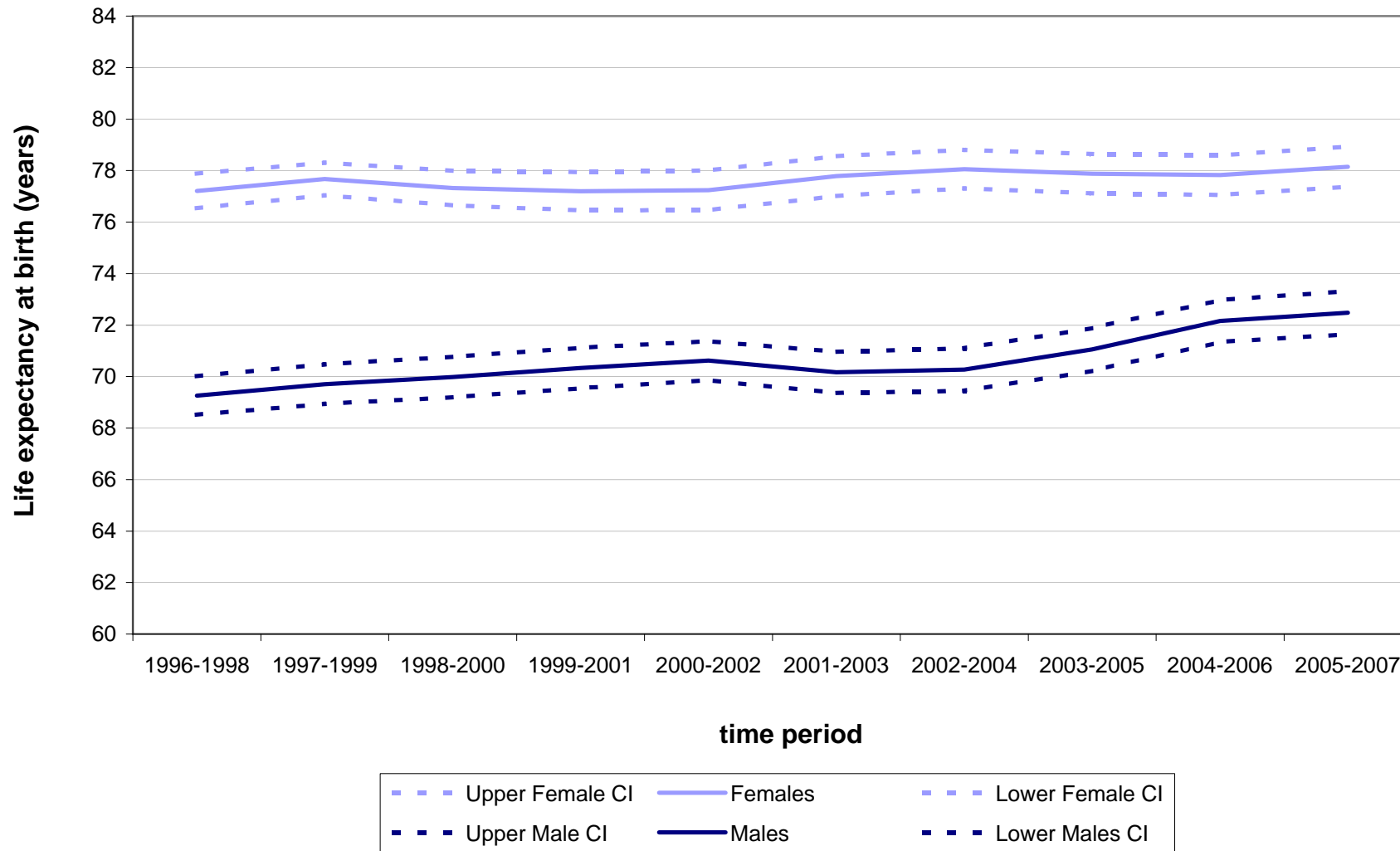


Figure 4 Life expectancy at birth, with 95% lower and upper confidence intervals, 1996-1998 to 2005-2007 for males and females in Kirkcaldy & Levenmouth Community Health Partnership

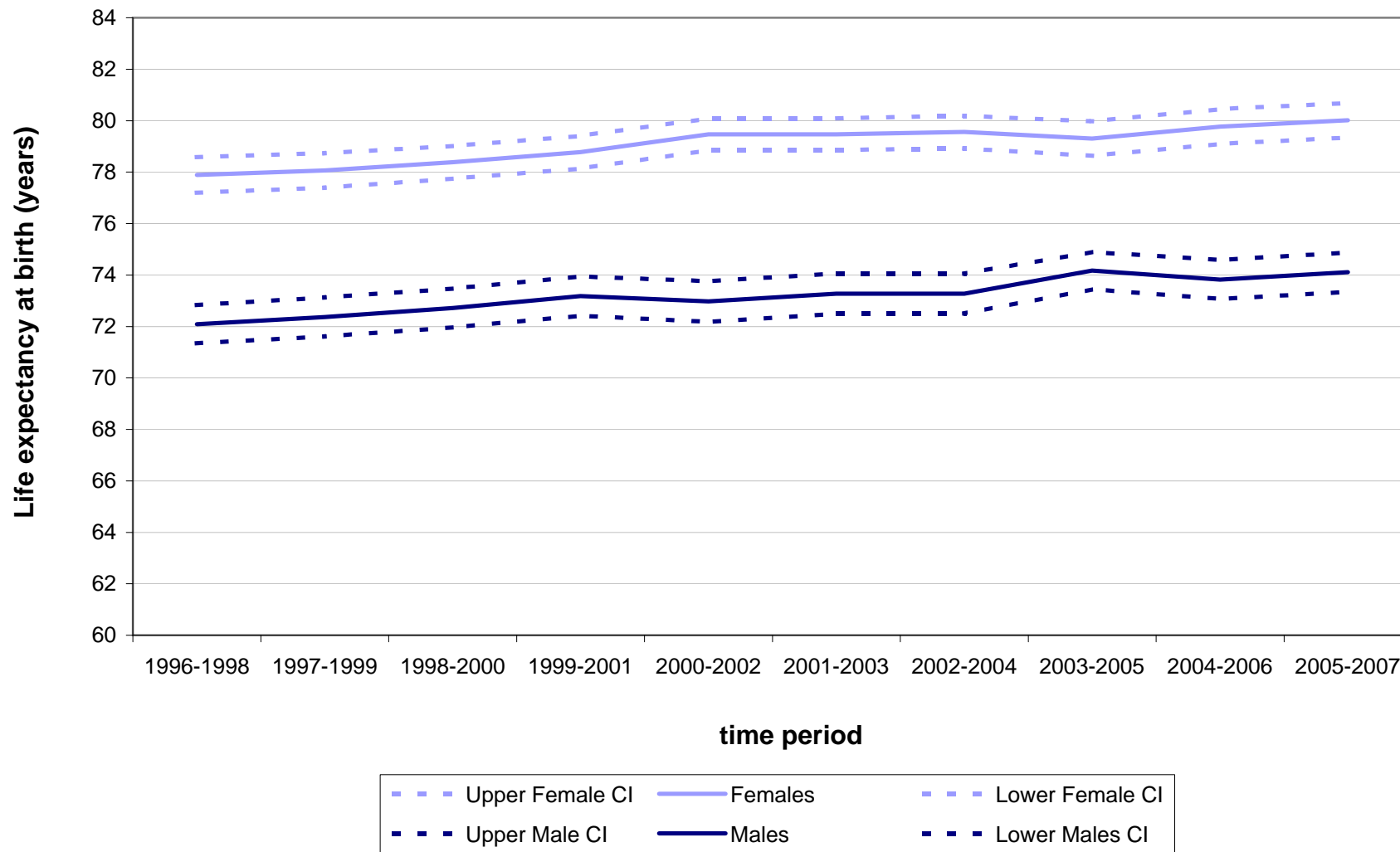


Figure 4 Life expectancy at birth, with 95% lower and upper confidence intervals, 1996-1998 to 2005-2007 for males and females in Mid Highland Community Health Partnership

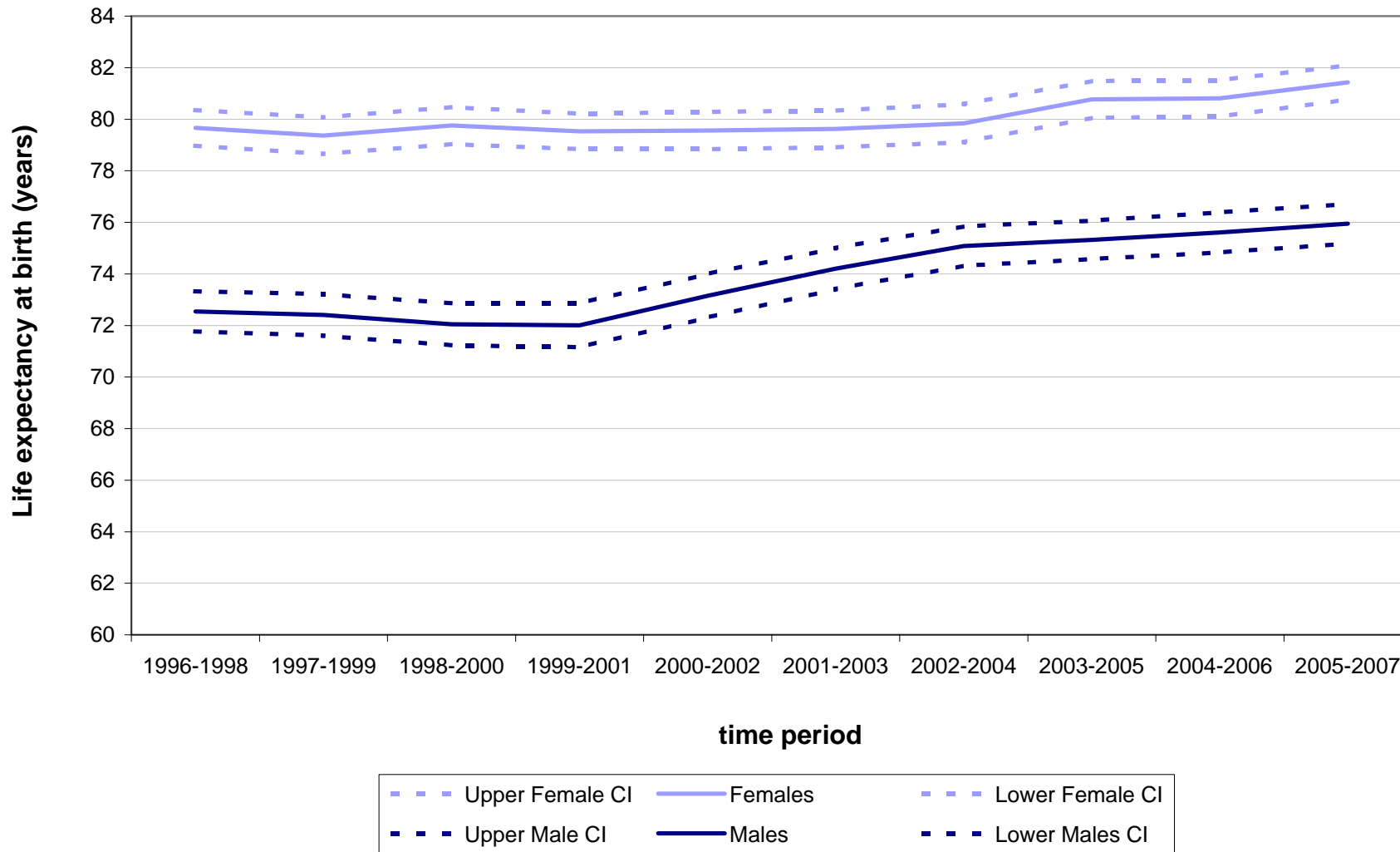


Figure 4 Life expectancy at birth, with 95% lower and upper confidence intervals, 1996-1998 to 2005-2007 for males and females in Midlothian Community Health Partnership

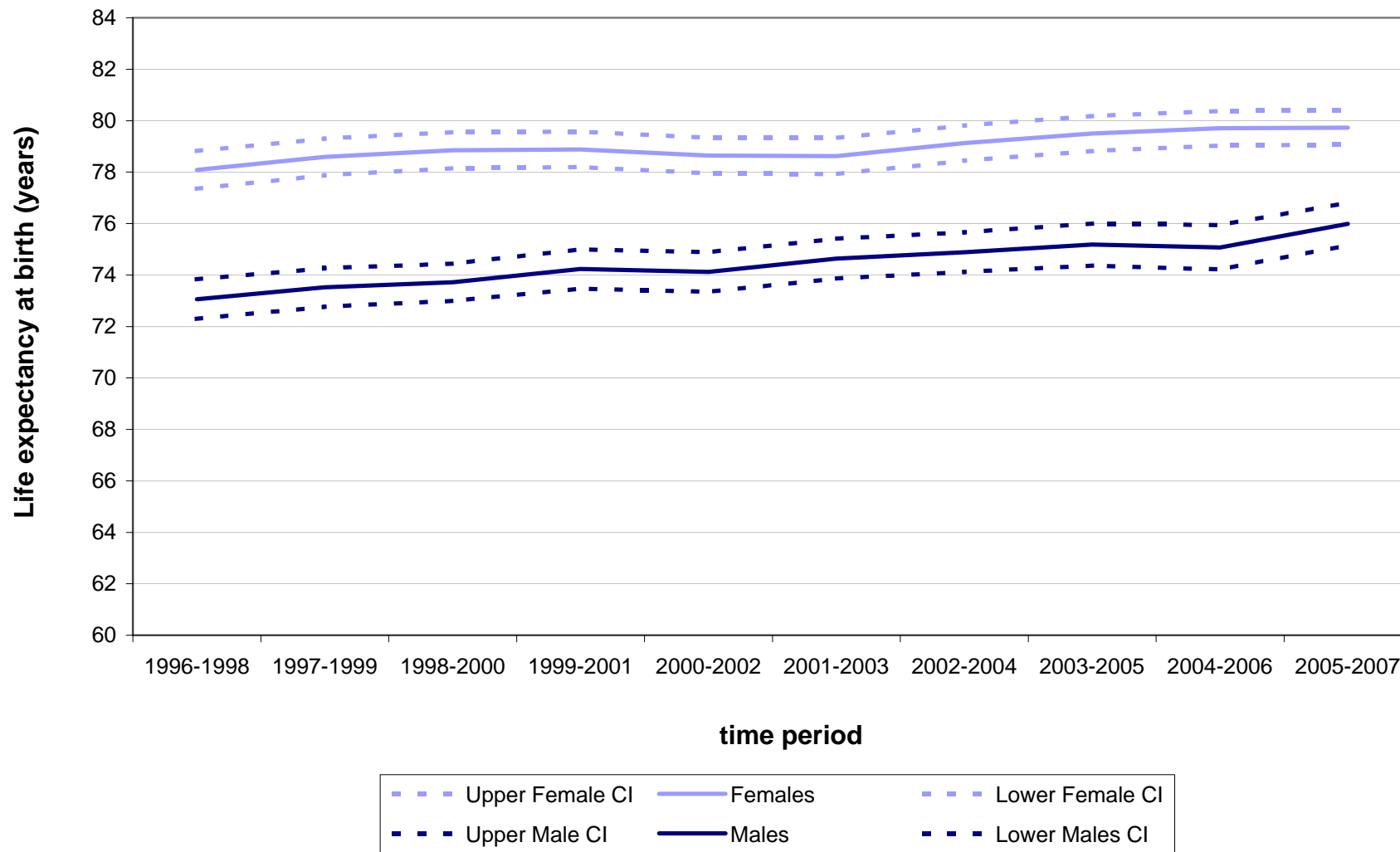


Figure 4 Life expectancy at birth, with 95% lower and upper confidence intervals, 1996-1998 to 2005-2007 for males and females in Moray Community Health & Social Care Partnership

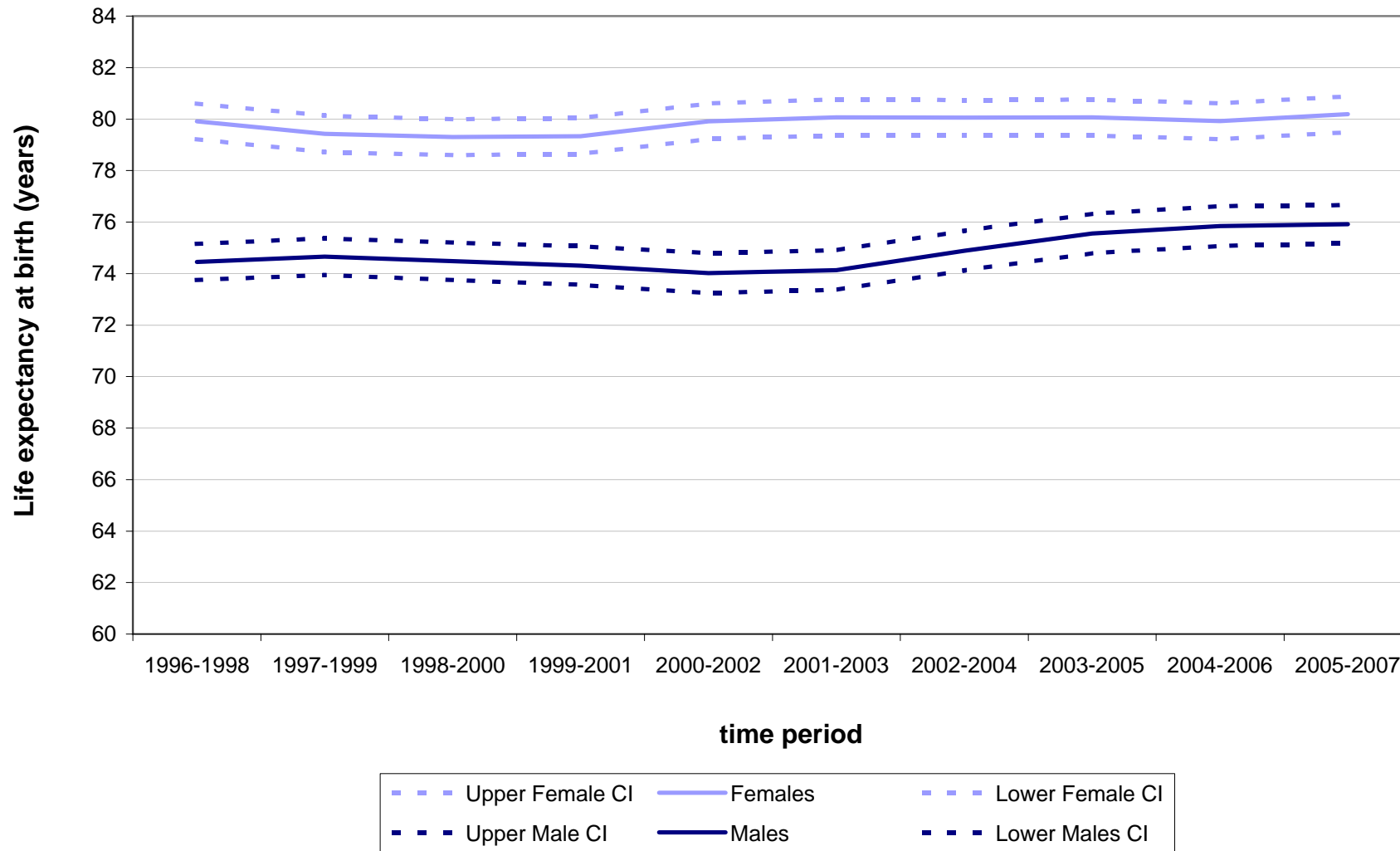


Figure 4 Life expectancy at birth, with 95% lower and upper confidence intervals, 1996-1998 to 2005-2007 for males and females in North Ayrshire Community Health Partnership

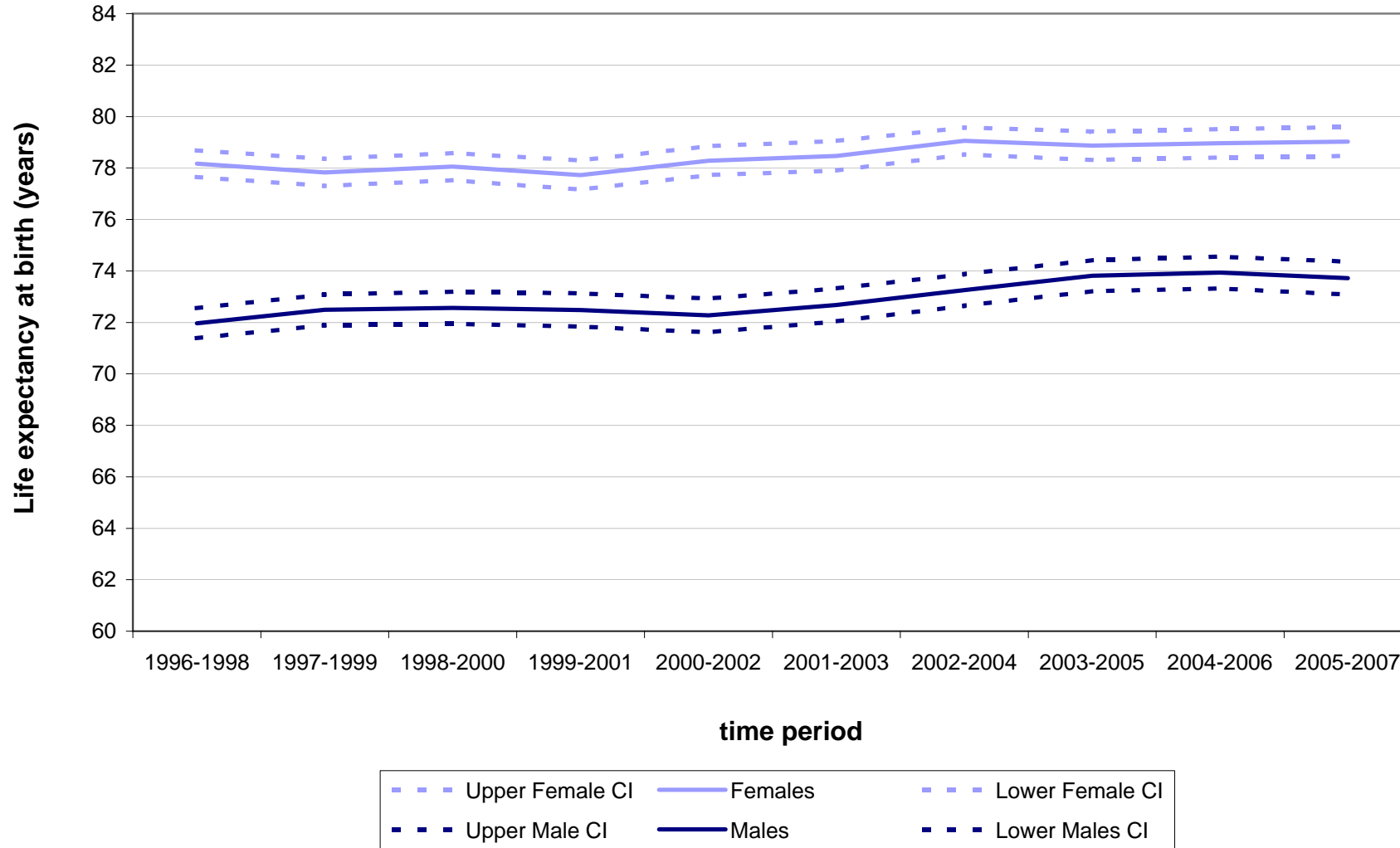


Figure 4 Life expectancy at birth, with 95% lower and upper confidence intervals, 1996-1998 to 2005-2007 for males and females in North Glasgow Community Health & Care Partnership

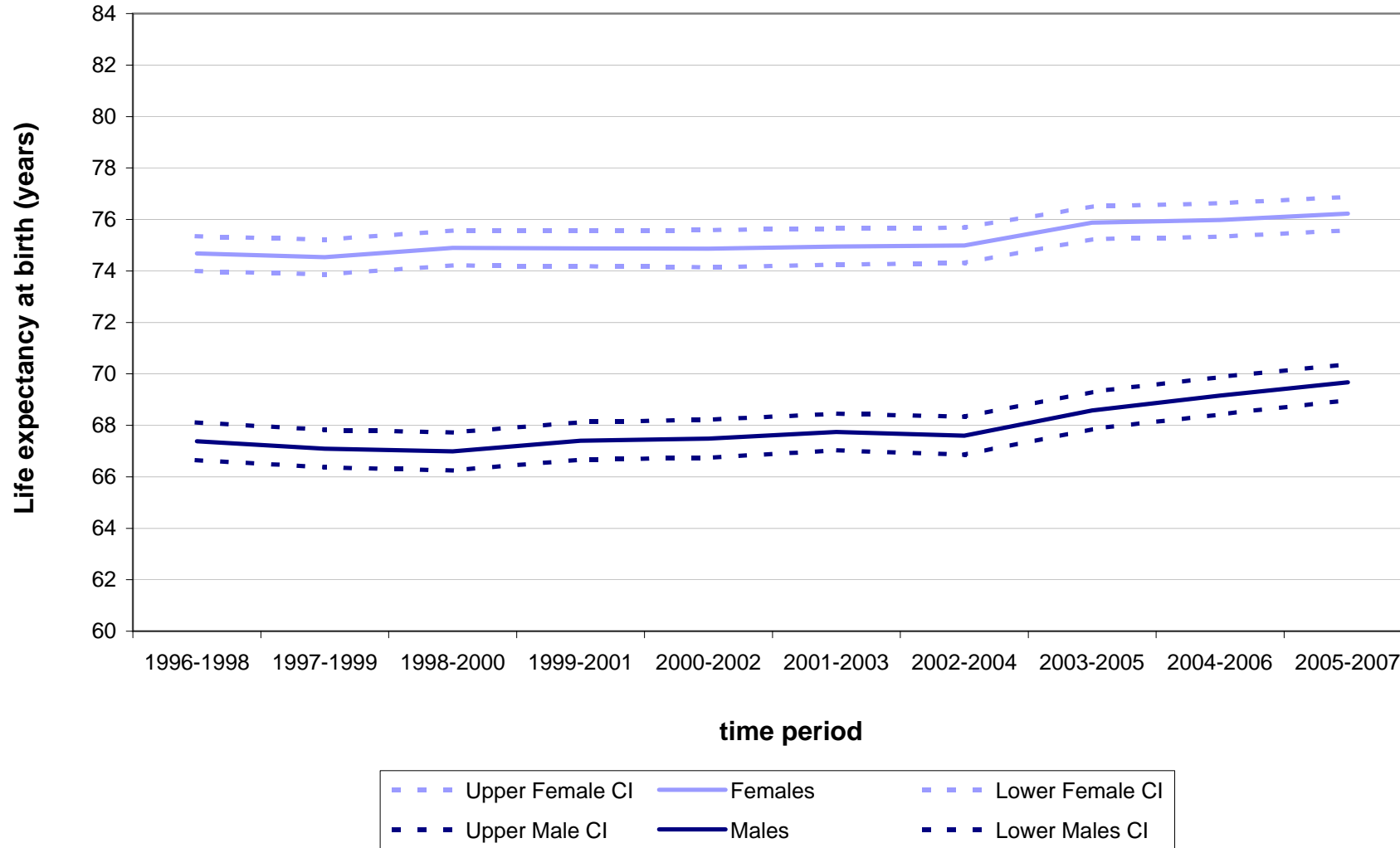


Figure 4 Life expectancy at birth, with 95% lower and upper confidence intervals, 1996-1998 to 2005-2007 for males and females in North Highland Community Health Partnership

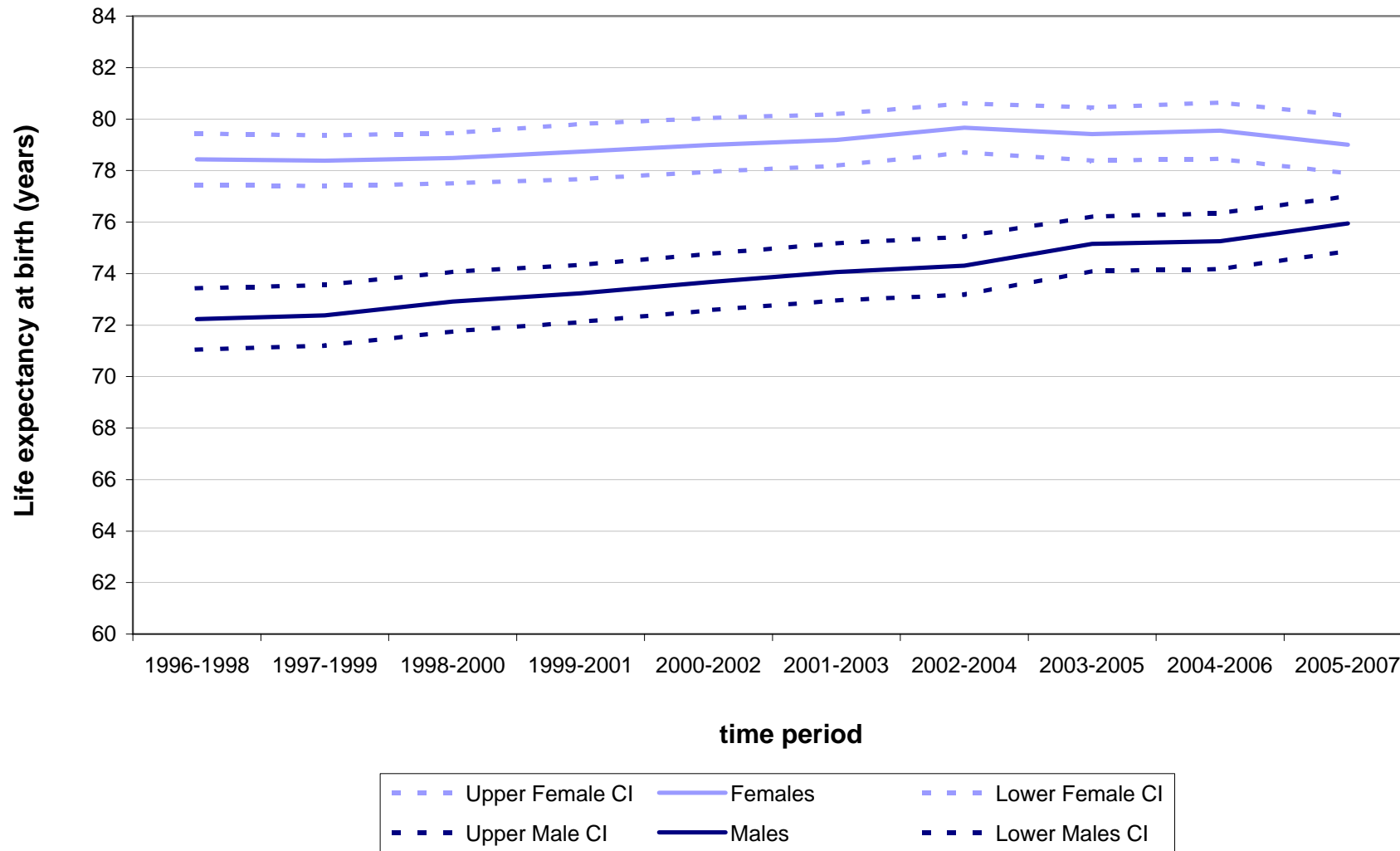


Figure 4 Life expectancy at birth, with 95% lower and upper confidence intervals, 1996-1998 to 2005-2007 for males and females in North Lanarkshire Community Health Partnership

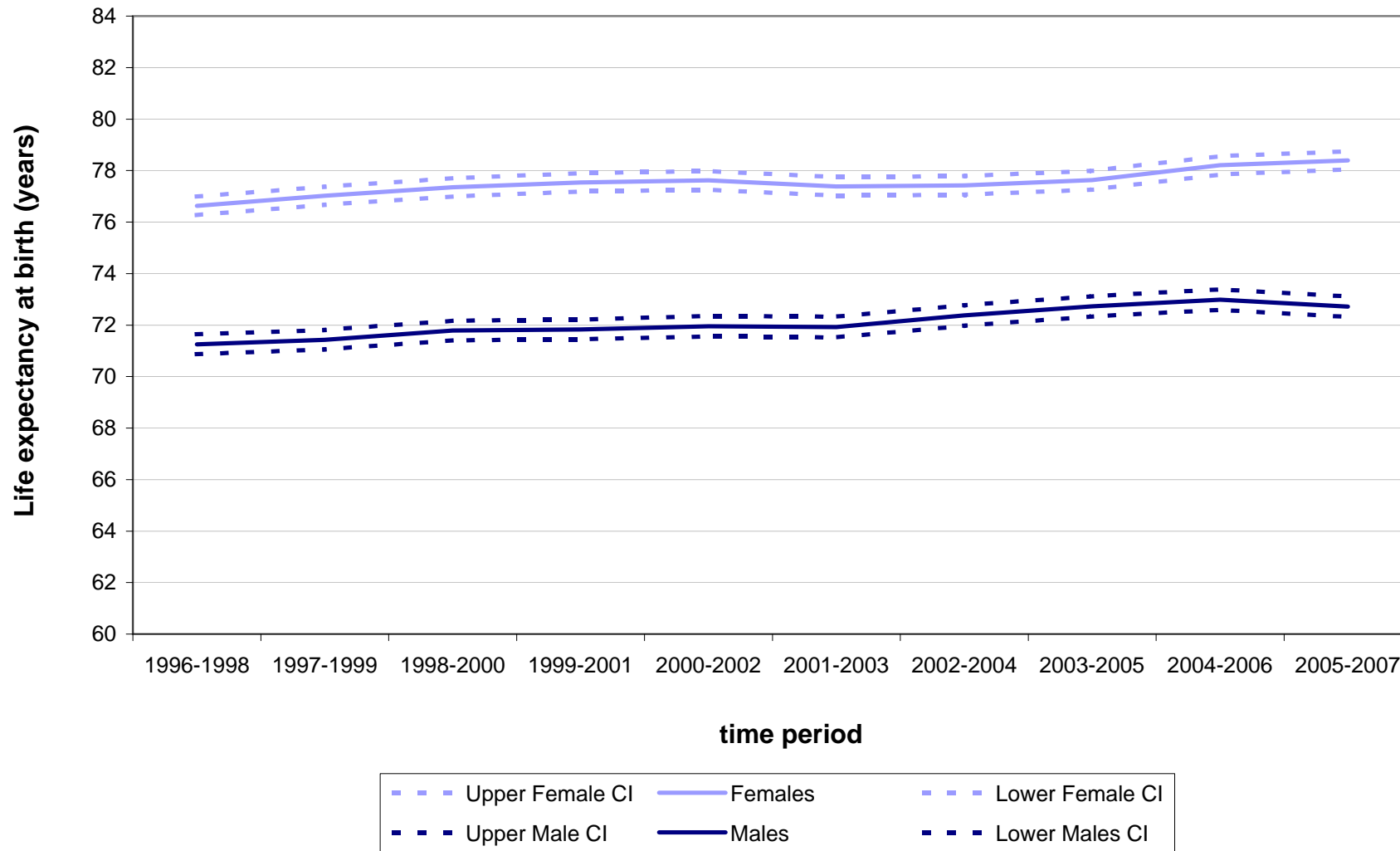


Figure 4 Life expectancy at birth, with 95% lower and upper confidence intervals, 1996-1998 to 2005-2007 for males and females in Orkney Community Health Partnership

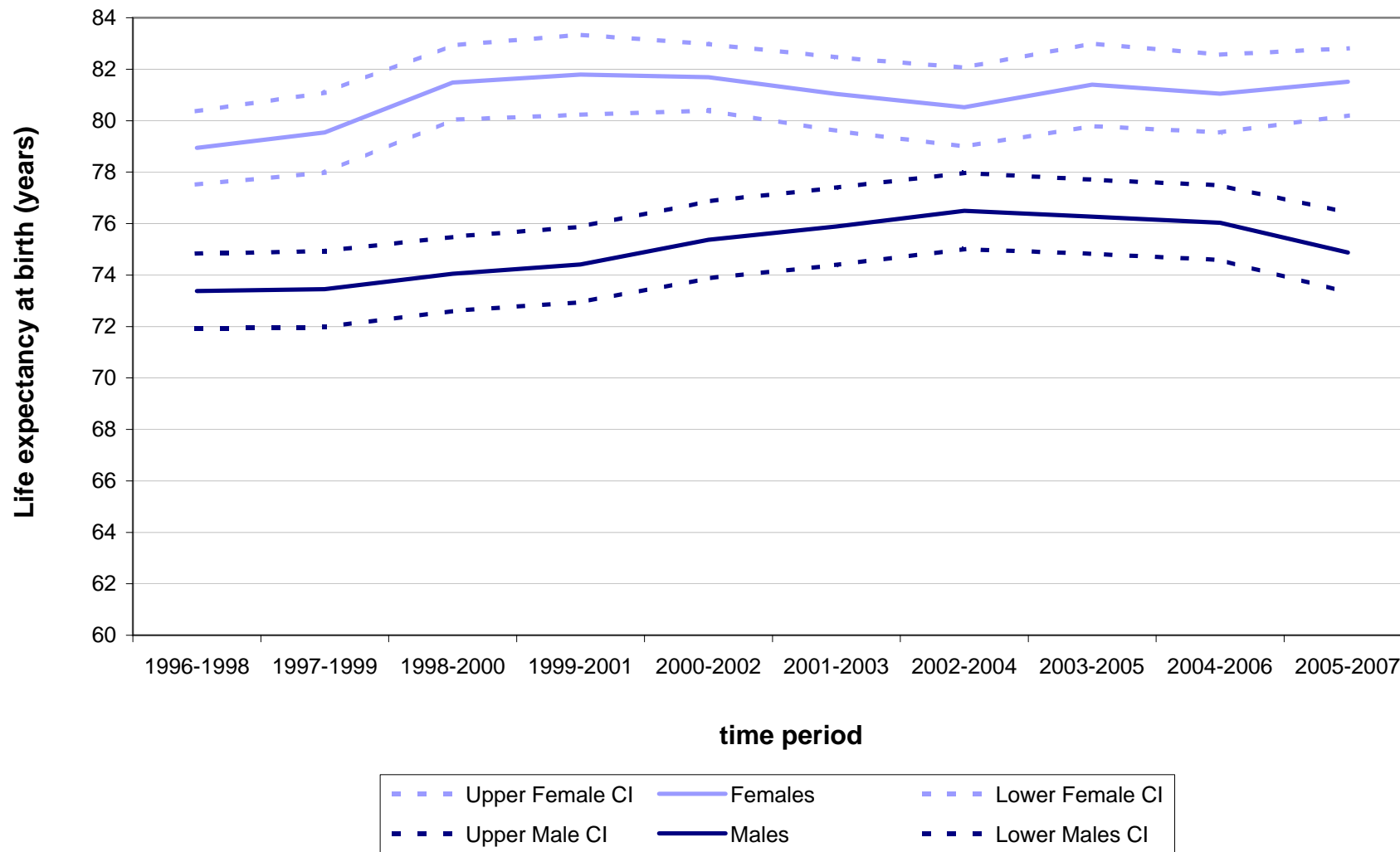


Figure 4 Life expectancy at birth, with 95% lower and upper confidence intervals, 1996-1998 to 2005-2007 for males and females in Perth & Kinross Community Health Partnership

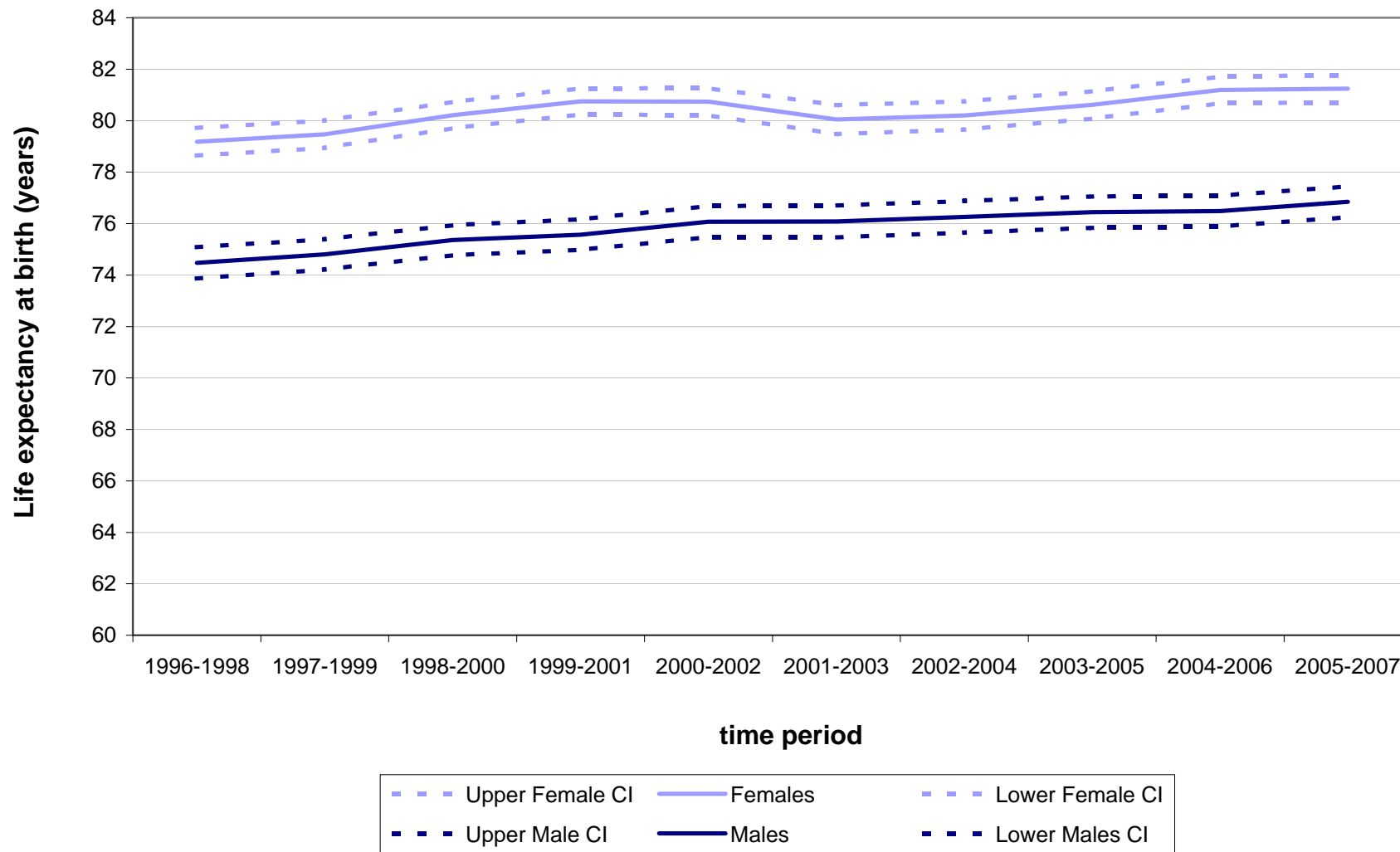


Figure 4 Life expectancy at birth, with 95% lower and upper confidence intervals, 1996-1998 to 2005-2007 for males and females in Renfrewshire Community Health Partnership

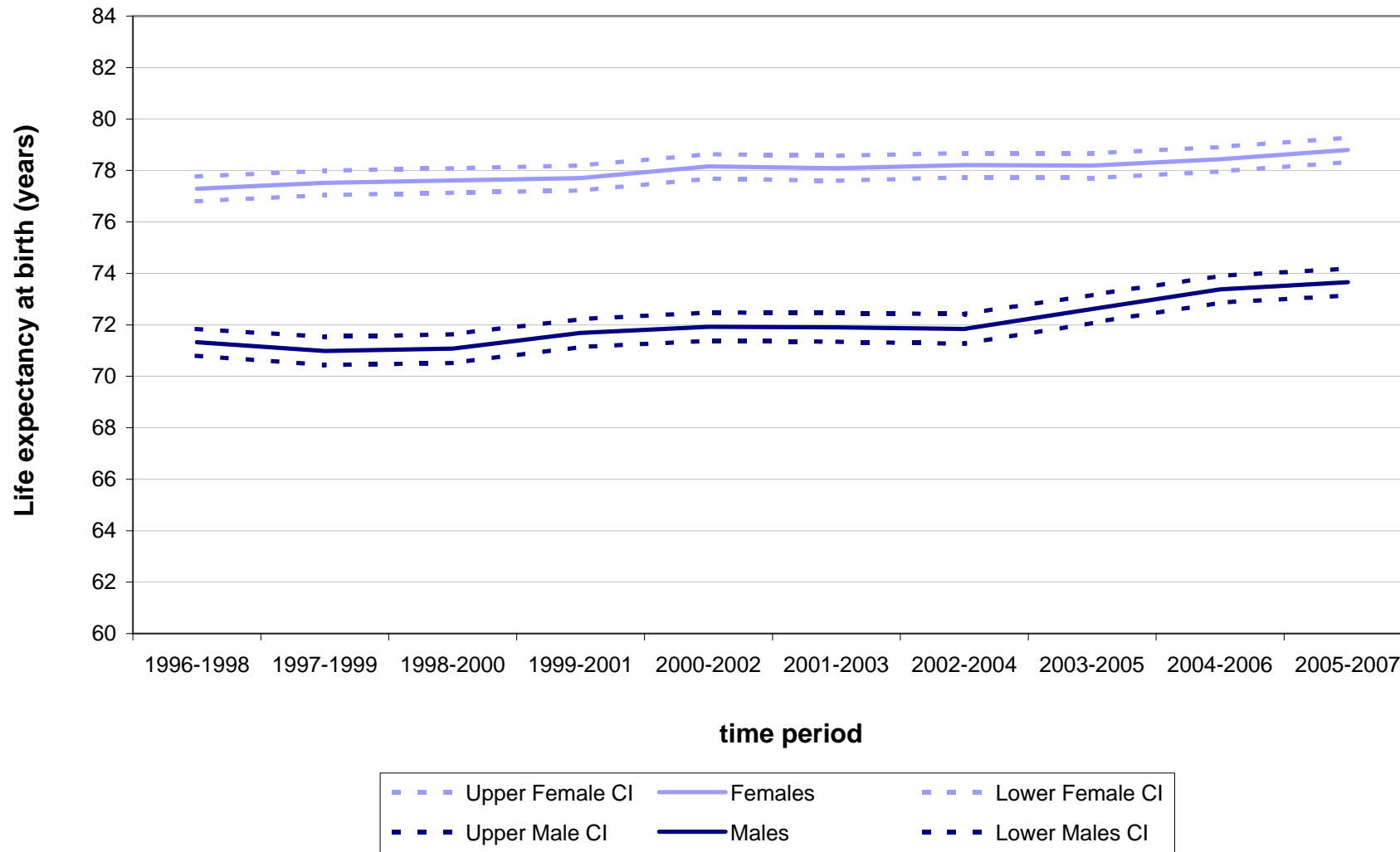


Figure 4 Life expectancy at birth, with 95% lower and upper confidence intervals, 1996-1998 to 2005-2007 for males and females in Scottish Borders Community Health & Care Partnership

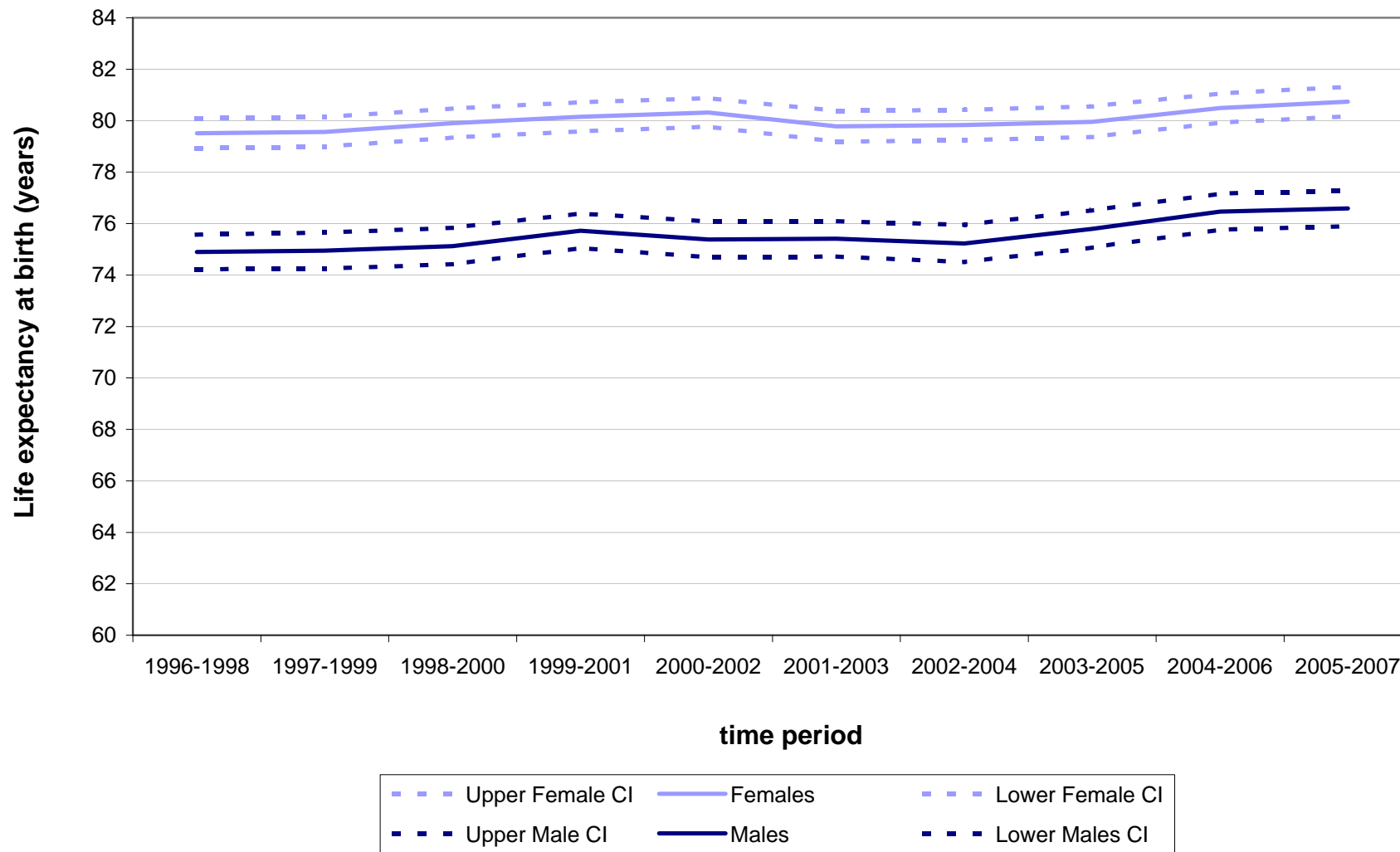


Figure 4 Life expectancy at birth, with 95% lower and upper confidence intervals, 1996-1998 to 2005-2007 for males and females in Shetland Community Health Partnership

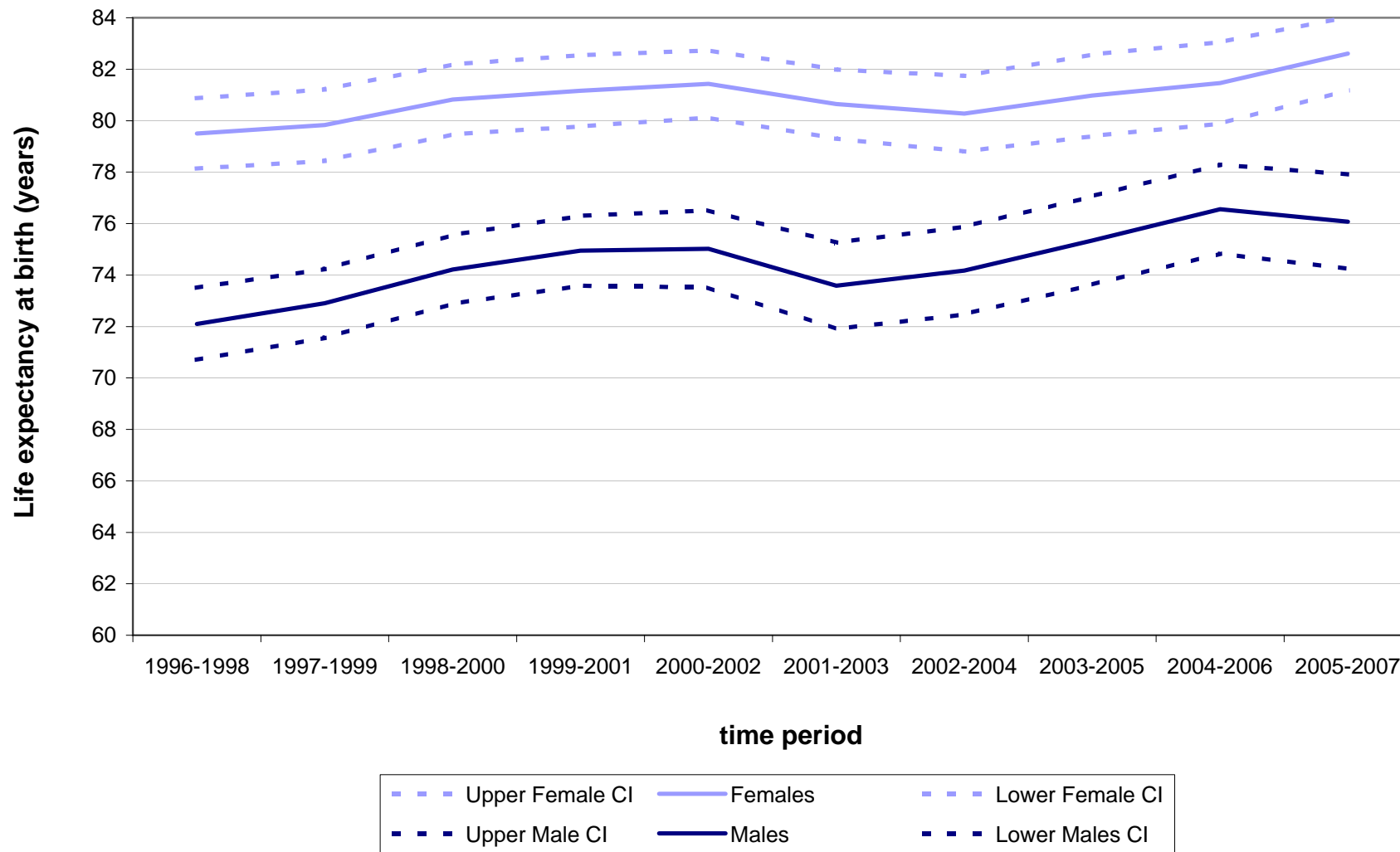


Figure 4 Life expectancy at birth, with 95% lower and upper confidence intervals, 1996-1998 to 2005-2007 for males and females in South Ayrshire Community Health Partnership

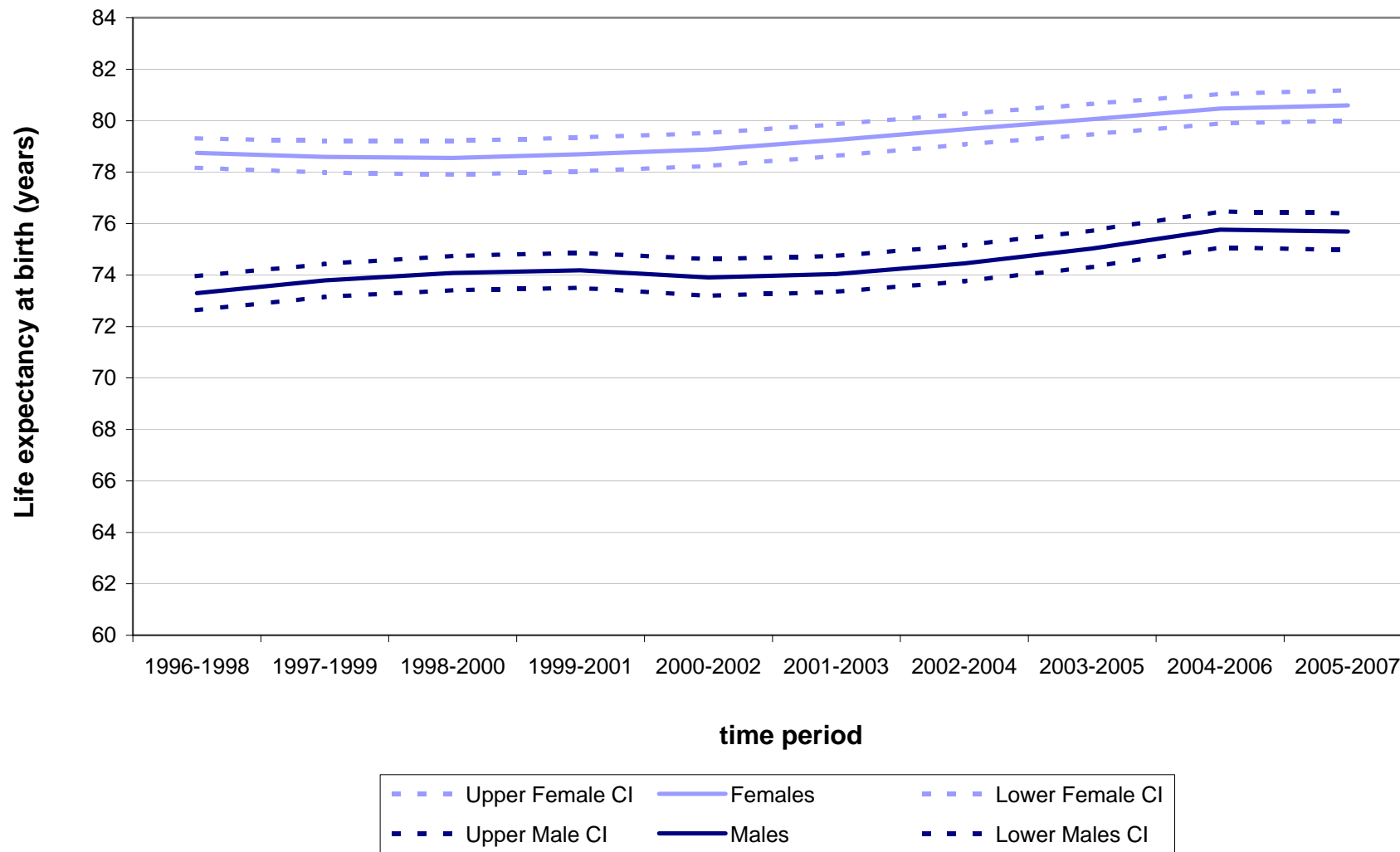


Figure 4 Life expectancy at birth, with 95% lower and upper confidence intervals, 1996-1998 to 2005-2007 for males and females in South East Glasgow Community Health & Care Partnership

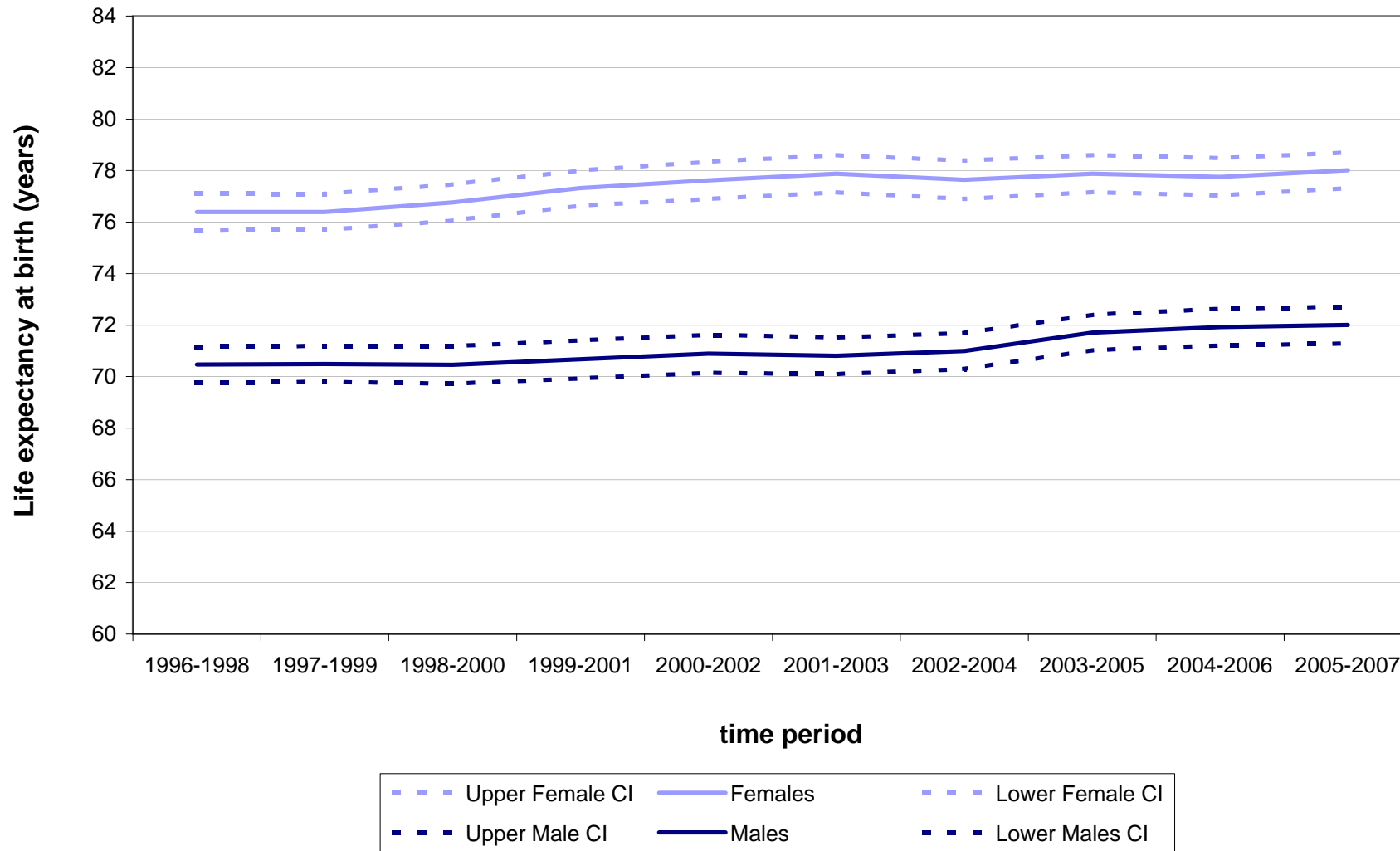


Figure 4 Life expectancy at birth, with 95% lower and upper confidence intervals, 1996-1998 to 2005-2007 for males and females in South East Highland Community Health Partnership

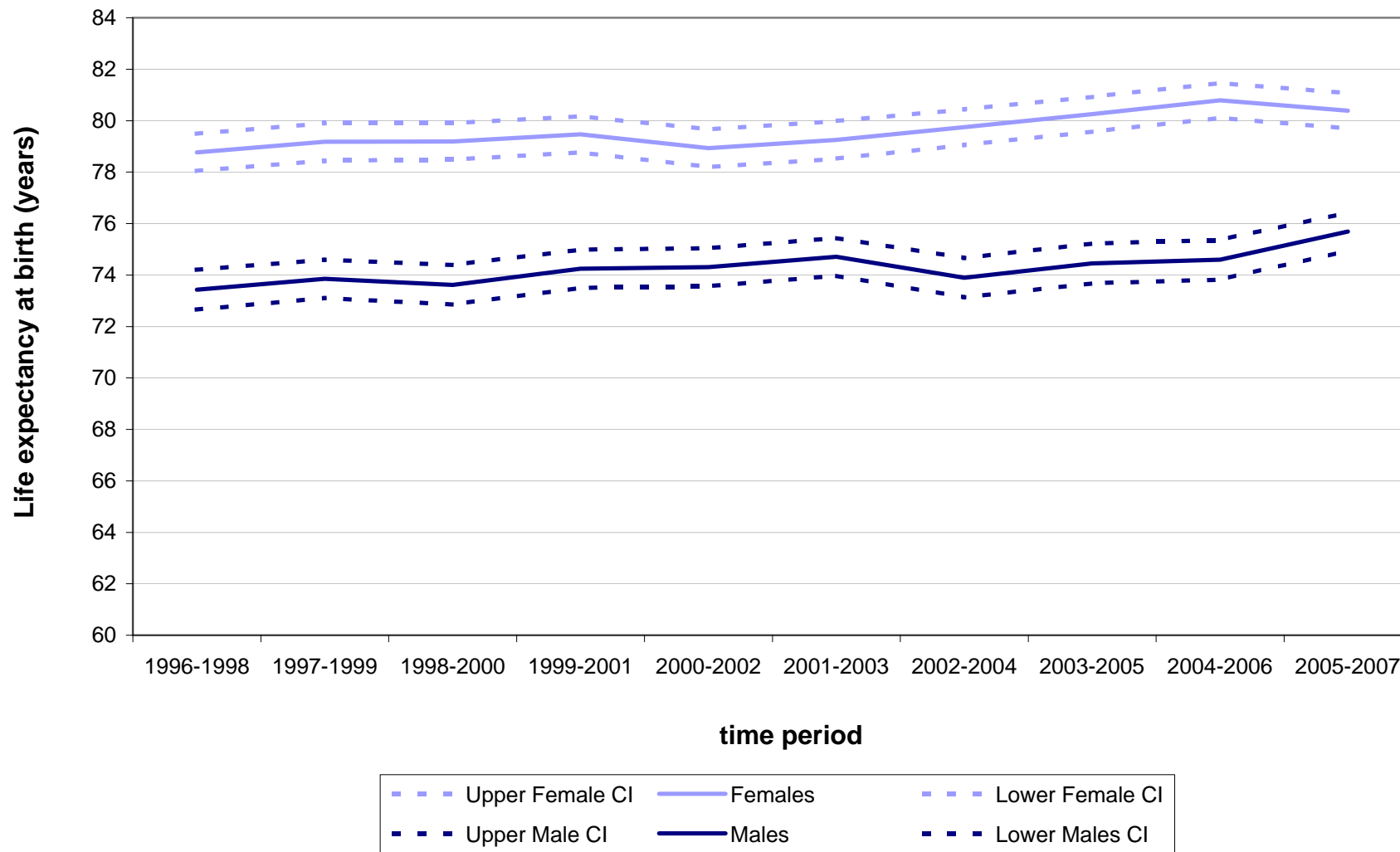


Figure 4 Life expectancy at birth, with 95% lower and upper confidence intervals, 1996-1998 to 2005-2007 for males and females in South Lanarkshire Community Health Partnership

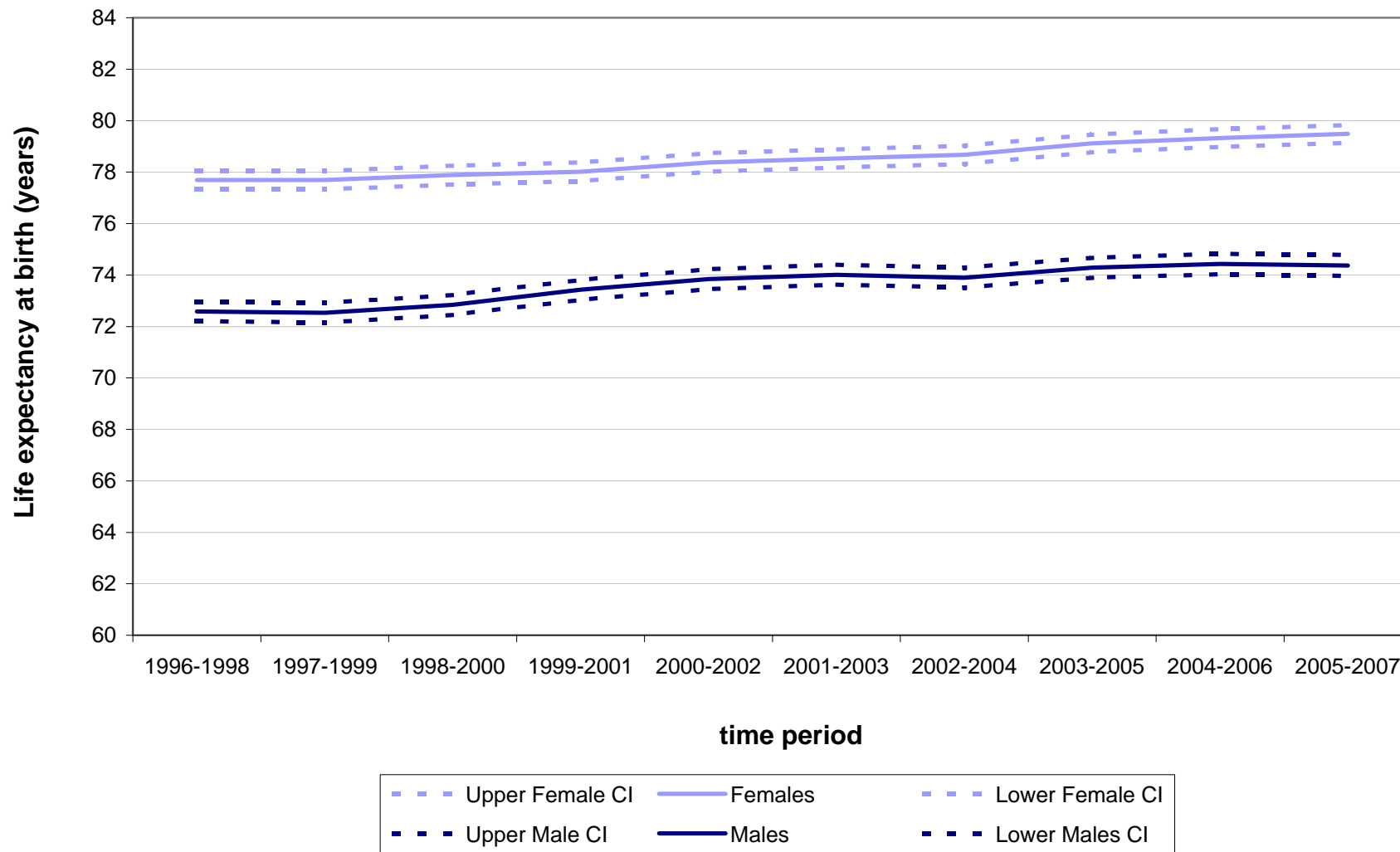


Figure 4 Life expectancy at birth, with 95% lower and upper confidence intervals, 1996-1998 to 2005-2007 for males and females in South West Glasgow Community Health & Care Partnership

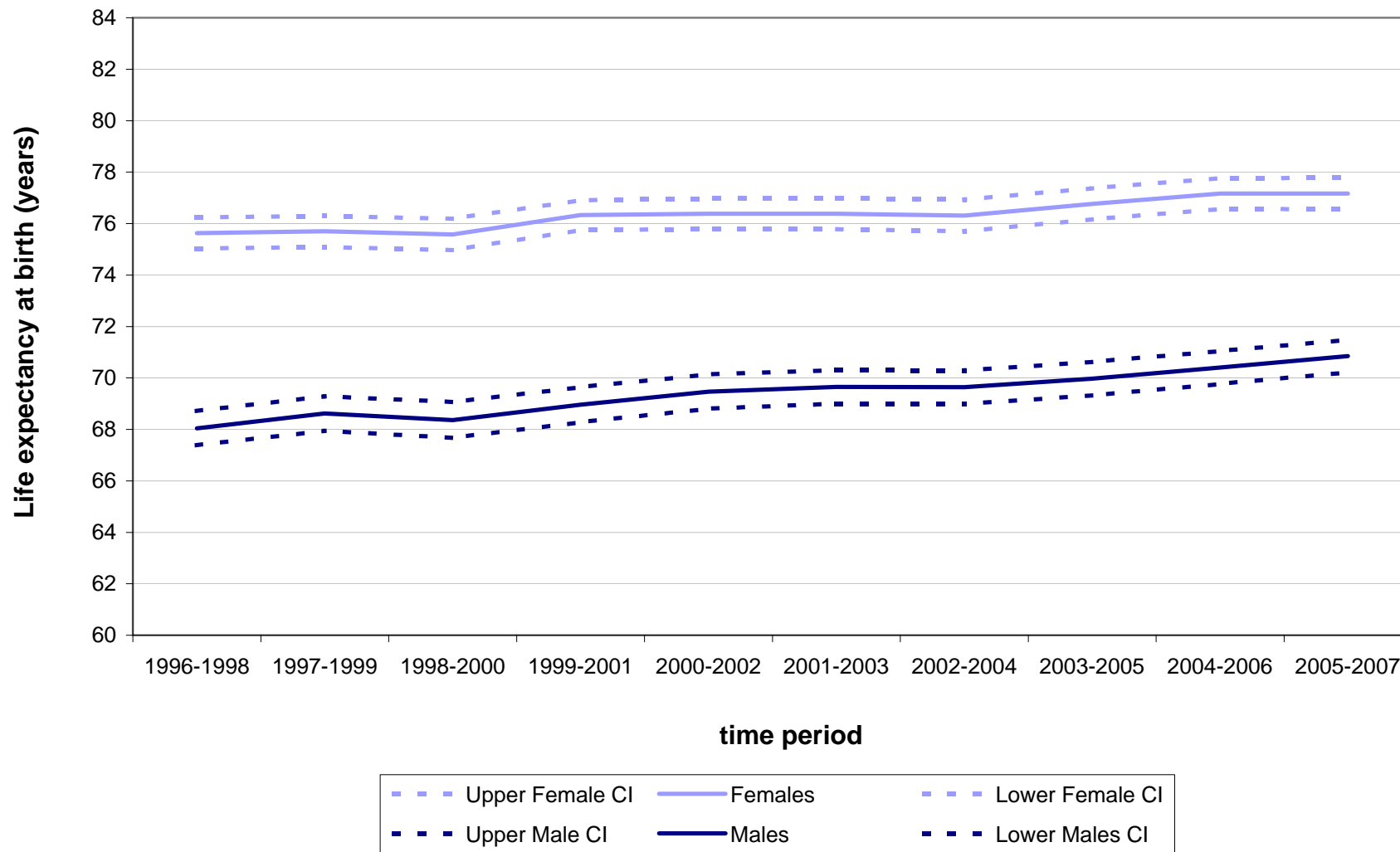


Figure 4 Life expectancy at birth, with 95% lower and upper confidence intervals, 1996-1998 to 2005-2007 for males and females in Stirling Community Health Partnership

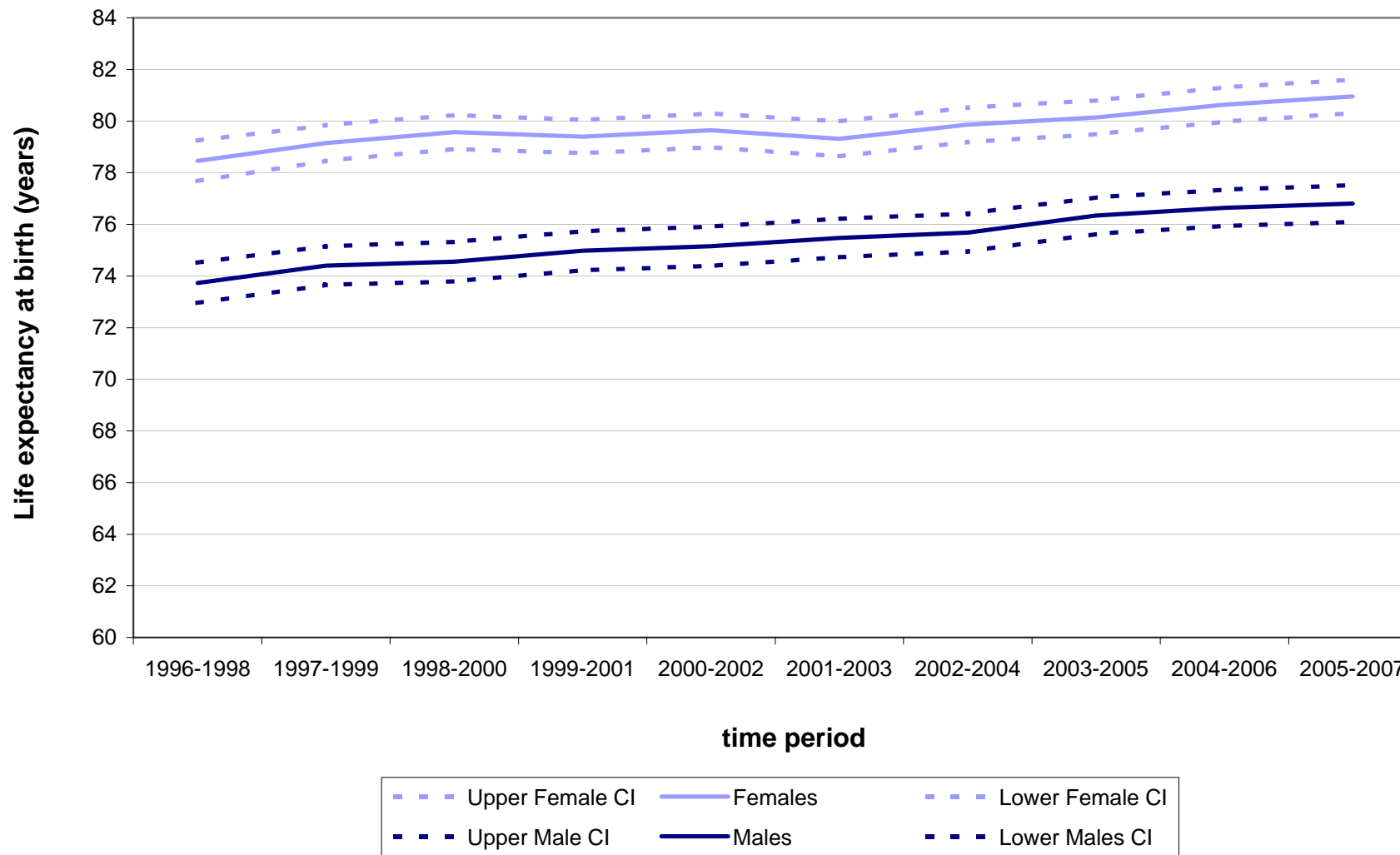


Figure 4 Life expectancy at birth, with 95% lower and upper confidence intervals, 1996-1998 to 2005-2007 for males and females in West Dunbartonshire Community Health Partnership

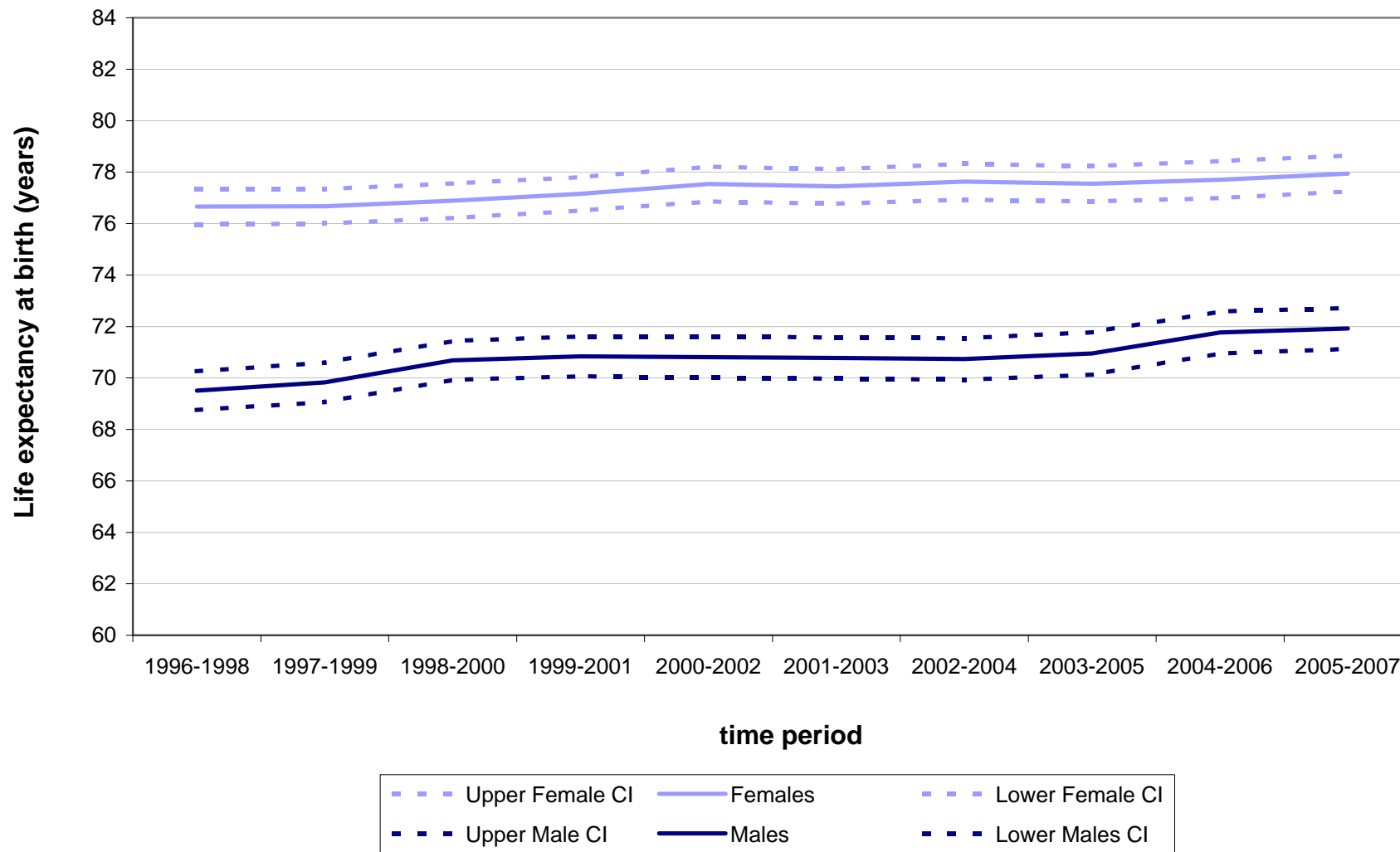


Figure 4 Life expectancy at birth, with 95% lower and upper confidence intervals, 1996-1998 to 2005-2007 for males and females in West Glasgow Community Health & Care Partnership

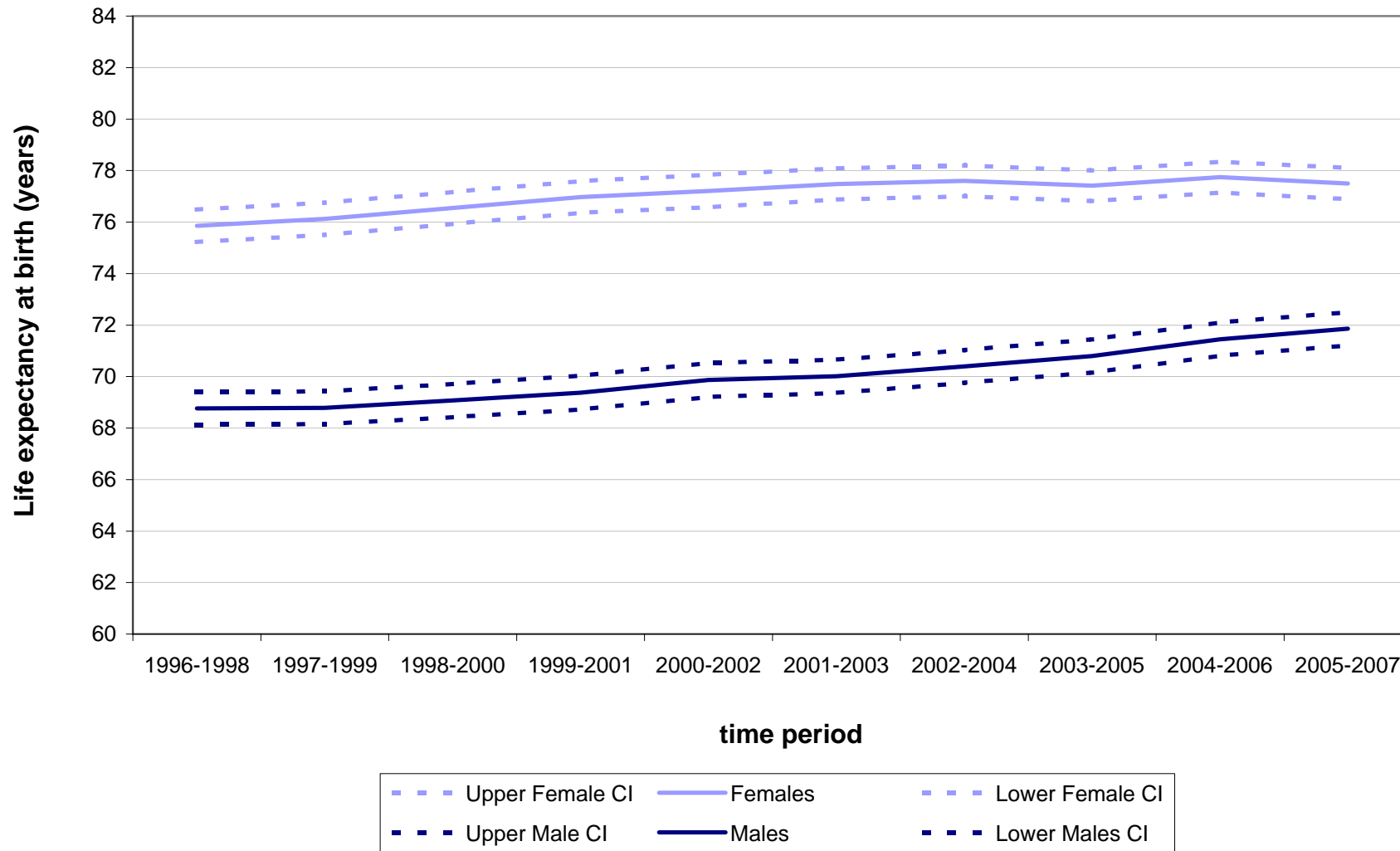


Figure 4 Life expectancy at birth, with 95% lower and upper confidence intervals, 1996-1998 to 2005-2007 for males and females in West Lothian Community Health Partnership

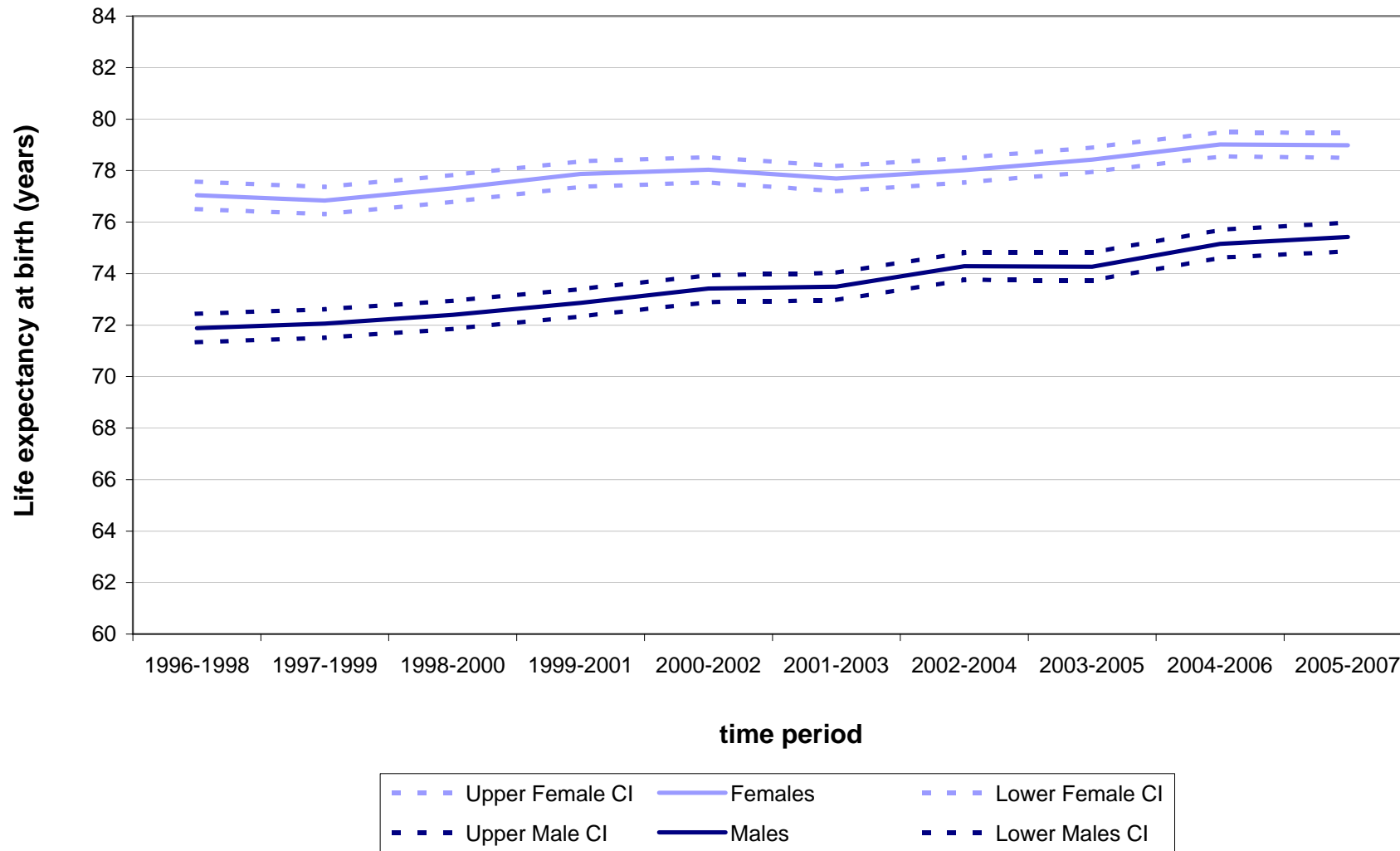


Figure 4 Life expectancy at birth, with 95% lower and upper confidence intervals, 1996-1998 to 2005-2007 for males and females in Western Isles Community Health Partnership

