

General Register Office
for
SCOTLAND
information about Scotland's people

**Life Expectancy in Special Areas (Urban/Rural,
Deprivation and Community Health Partnership) within
Scotland, 2007-2009**

Published on 30 November 2010

Contents

Main points	4
1. Introduction	5
2. Results	6
2.1 Life expectancy by Urban Rural Classification	6
2.2 Life expectancy by Deprivation Area.....	7
2.3 Life expectancy by Community Health Partnership (CHP) Area	9
2.3.1 Life expectancy at birth and age 65, 2007-2009	9
2.3.2 Comparison between 1997-1999 and 2007-2009	10
3. Accuracy of results.....	13
4. Life expectancy notes and definitions	13
Notes on Statistical Publications.....	32

List of tables

Table 1:	Abridged life table, by sex, age and Urban Rural Classification, Scotland 2007-2009	15
Table 2:	Abridged life table, by sex, age and deprivation decile, Scotland 2007-2009	16
Table 3:	Abridged life table, by sex, age and deprivation quintile, Scotland 2007-2009	18
Table 4:	Abridged life table, by sex, age and deprivation vigintile, Scotland 2007-2009	19
Table 5:	Abridged life table, by sex, age and Community Health Partnership, Scotland 2007-2009	22
Table 6:	Life expectancy at birth by Urban Rural classification, 2007-2009, with 95 per cent upper and lower confidence intervals (males and females)	27
Table 7:	Life expectancy at birth by SIMD 2009 Quintile, Decile and Vigintile, 2007-2009, with 95 per cent upper and lower confidence intervals (males and females).....	28
Table 8:	Life expectancy at birth by Community Health Partnership, 2007-2009, with 95 per cent upper and lower confidence intervals (males and females)	29
Table 9:	Life expectancy at birth by Community Health Partnership, 2007-2009 and comparisons with 1997-1999 (males).....	30
Table 10:	Life expectancy at birth by Community Health Partnership, 2007-2009 and comparisons with 1997-1999 (females).....	31

List of figures

Figure 1:	Life expectancy at birth, 95 per cent confidence intervals for Scottish Urban Rural Classification areas, 2007-2009 (males and females).....	7
Figure 2:	Life expectancy at birth, 95 per cent confidence intervals for SIMD 2009 Decile areas, 2007-2009 (males and females).....	8
Figure 3:	Life expectancy at birth, 95 per cent confidence intervals for Scottish Community Health Partnership Areas, 2007-2009 (males and females)	10
Figure 4:	Life expectancy at birth, with 95 per cent lower and upper confidence limits, 1997-1999 to 2007-2009, for males and females in each Community Health Partnership area	10
Figure 5a:	Percentage change in life expectancy, 1997-1999 to 2007-2009, in Scotland and for each individual Community Health Partnership (CHP) Area, Males	12
Figure 5b:	Percentage change in life expectancy, 1997-1999 to 2007-2009, in Scotland and for each individual Community Health Partnership (CHP) Area, Females	12

Main points

- Men in rural areas – remote and accessible – can expect to live around 3.6 years longer (77.6 and 77.9 years respectively) than men in large urban areas (74.0 years);
- Women in rural areas - remote and accessible – can expect to live around 2 years longer (81.8 and 81.5 years respectively) than women in large urban areas (79.5 years);
- Life expectancy increases as deprivation decreases;
- Men in the 10 per cent least deprived areas of Scotland can expect to live for 13.4 years more than men in the 10 per cent most deprived areas (81.1 years compared with 67.7 years);
- Women in the 10 per cent least deprived areas of Scotland can expect to live 9 years longer than those in the 10 per cent most deprived areas (84.4 years compared with 75.4 years);
- At the two extremes, men in East Dunbartonshire Community Health Partnership area can expect to live around 8 years longer than men in North and East Glasgow Community Health and Care Partnership areas (78.3 years compared to 69.8 and 70.1 years respectively);
- Similarly, women in East Dunbartonshire Community Health Partnership area can expect to live around 6 years longer than women in North and East Glasgow Community Health and Care Partnership areas (83.1 years compared to 76.2 and 77.3 years respectively);
- In the 10 years since 1997-1999, life expectancy at birth has increased in every Community Health Partnership area, although in 12 cases by a margin so small or non-significant that it may be a consequence of the volatile nature of life expectancy estimates in small areas;
- For men, the largest increase in life expectancy at birth, over the 10 year period, was in Mid Highland (an improvement of 6.2 per cent or 4.5 years) and for women in East Dunbartonshire (an improvement of 4.5 per cent or 3.6 years);
- The gap between the area with the highest male life expectancy at birth and the area with the lowest decreased by 0.8 years (from 9.3 years in 1997-1999 to 8.5 years in 2007-2009); for females it has increased by 0.5 years (from 6.4 years in 1997-1999 to 6.9 years in 2007-2009);
- The gap between male and female life expectancy narrowed in all but 7 of the Community Health Partnership areas. The largest decrease (2.6 years) was in North Highland (3.4 years in 2007-2009 compared to 6.0 years in 1997-1999).

1. Introduction

This publication summarises the Registrar General for Scotland's life expectancy figures for the following 'special areas' within Scotland:

- **Urban and Rural Areas**

The urban-rural split used in this publication is based on the Scottish Government's 6-fold Urban Rural Classification version 2009-2010. The differences between the 2007-2008 and the 2009-2010 classifications stem from changes to either settlement populations or settlement boundaries. The definitions of urban and rural areas underlying the classification are unchanged. For more information visit [Scottish Government Urban Rural Classification 2009-2010](#).

The 6-fold classification distinguishes between urban, rural and remote areas within Scotland. It is consistent with the Government's definition of rurality and includes the following categories:

1) Large Urban	Settlements of over 125,000 people.
2) Other Urban	Settlements of 10,000 to 125,000 people.
3) Accessible Small Towns	Settlements of between 3,000 and 10,000 people and within 30 minutes drive of a settlement of 10,000 or more.
4) Remote Small Towns	Settlements of between 3,000 and 10,000 people and with a drive time of over 30 minutes to a settlement of 10,000 or more.
5) Accessible Rural	Settlements of less than 3,000 people and within 30 minutes drive of a settlement of 10,000 or more.
6) Remote Rural	Settlements of less than 3,000 people and with a drive time of over 30 minutes to a settlement of 10,000 or more.

- **Deprivation areas**

Deprivation areas are based on the Scottish Index of Multiple Deprivation (SIMD) 2009 developed by the Scottish Government (<http://www.scotland.gov.uk/SIMD>). The SIMD ranks the 6,505 Scottish data zones (areas of compact shape and similar social characteristics, with populations of around 795 people) from 1 (most deprived) to 6,505 (least deprived). The SIMD rank can be split into vigintiles, deciles and quintiles. Life expectancy figures for deprivation areas have been presented in this way.

- **Community Health Partnerships**

There are currently 40 Community Health Partnerships (CHP areas) organisations in Scotland. They are responsible for managing community health services and have developed existing links between community and hospital-based health services and local authority services such as social work, housing, leisure and education. Their principal aim is to improve the long-term health and wellbeing of communities and enhance the quality of health and social care services. In some areas, such as Glasgow, the Partnerships are responsible for many local social care services and are therefore called Community Health and Care Partnerships (CHCPs) or Community Health and Social Care Partnerships (CHSCPs or CHaSCPs) and are run jointly by the NHS with local Council partners. For ease of reading they will be referred to as CHPs throughout the publication.

The Scotland-level life expectancy estimate shown in this publication is for use only as a comparator for the corresponding sub-Scotland-level figures. The definitive Scotland-level life expectancy estimate (based on interim life tables) is published by the Office for National Statistics (ONS): [National Statistics Online - Interim Life tables](#).

Life expectancy statistics for each Council and NHS Board area were given in [Life Expectancy for Administrative Areas within Scotland, 2007-2009](#) published by the General Register Office for Scotland (GROS) on 16 September 2010. Section 4 of that publication provides further information on national and sub-national life expectancy and healthy life expectancy.

The life expectancy figures in this publication are of use in monitoring and investigating health inequality issues across Scotland and in setting public health targets, particularly when used in conjunction with the SIMD 2009. Results for 2007-2009 are new in this edition of the publication as are Figures 5a and 5b and the additional commentary.

2. Results

Men have a shorter life expectancy than women both in Scotland generally and within each Urban Rural, Deprivation and CHP area. There is, however, much variation from place to place.

Please note that differences in life expectancy estimates are calculated using rounded estimates.

2.1 Life expectancy by Urban Rural Classification

In the previous report in this series of publications ([Life Expectancy in Special Areas - 2006-2008](#)) life expectancy in urban and rural areas was calculated using the Scottish Governments 2007-2008 Urban Rural Classification. This set of life expectancy figures are based on the 2009-2010 Urban Rural Classification.

[Table 1](#), [Table 6](#) and [Figure 1](#) show that the shortest male life expectancy at birth (74.0 years) was for men living in Large Urban areas. Accessible Rural areas and Remote Rural areas had the longest male life expectancy (77.9 years and 77.6 years respectively).

The pattern for women was very similar, although their life expectancy at birth was invariably higher. Women living in Large Urban areas had the shortest life expectancy (79.5 years) and those living in Rural areas – Remote and Accessible – had the longest (81.8 years and 81.5 years respectively).

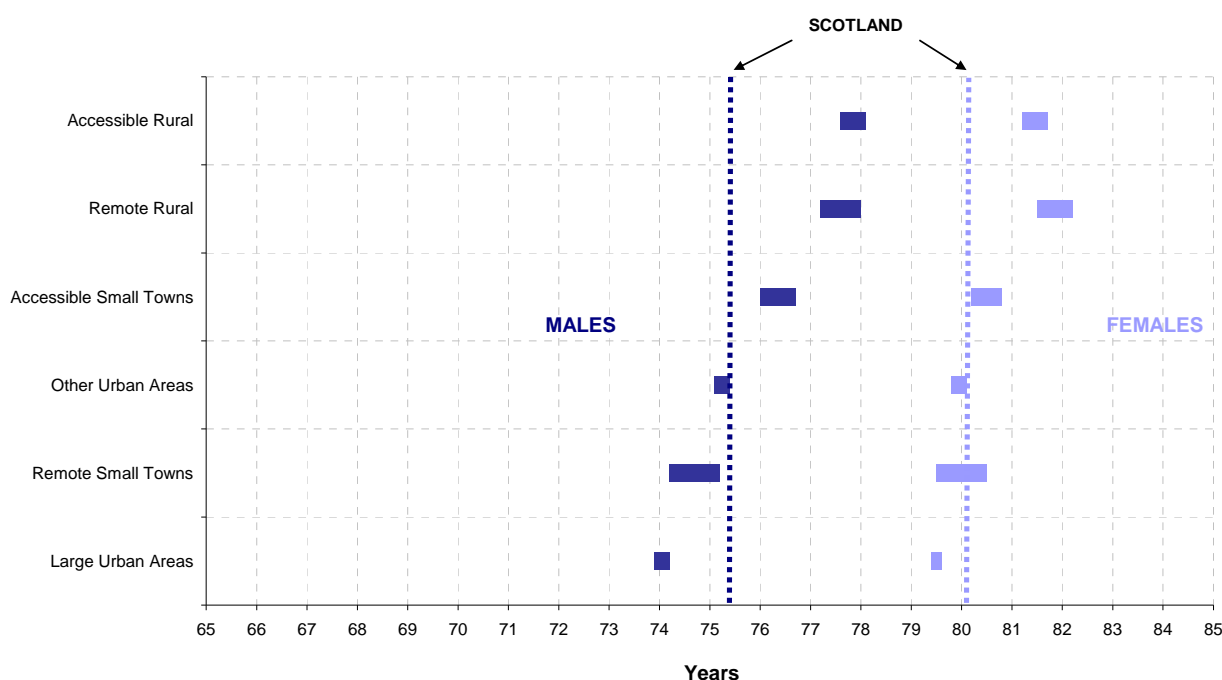
In all Urban and Rural areas, female life expectancy (at birth) was longer than male life expectancy. However, [Figure 1](#) shows that the gap between male and female life expectancy was widest in Large Urban areas, where men could expect to live 74.0 years from birth but women could expect to live 79.5 years, 5.5 years longer.

[Figure 1](#) also shows that people in Large Urban areas had a shorter life expectancy at birth than the Scottish average (for males, the difference was 1.4 years and for females 0.6 years). People living in Other Urban areas and in Remote Small Towns also had shorter life expectancies at birth than the Scottish average, although the differences were smaller.

At the other end of the scale, people in Rural areas – remote and accessible – lived longer than the Scottish average (over 2 years extra for men and over 1 year extra for women).

The differences in life expectancy estimates at age 65 were narrower, but 65 year old people living in Remote Rural areas could still look forward to a lifespan around 1 year longer than the Scottish average and up to 2.1 years beyond that of their counterparts in Large Urban areas.

Figure 1: Life expectancy at birth, 95 per cent confidence intervals for Scottish Urban Rural Classification areas, 2007-2009 (males and females)



2.2 Life expectancy by Deprivation Area

The SIMD measures deprivation. At the lower end of the rankings (i.e. decile 10, vigintile 20 and quintile 5) all that can be said is that there is less deprivation. The SIMD does not measure affluence so it is not possible to say that one area is more affluent than another. Therefore, the life expectancy figures presented by deprivation area in this report should not be translated as ‘life expectancy of the rich versus that of the poor’. Instead it should be viewed in terms of ‘differences in life expectancy in relation to the amount of concentrated deprivation’.

It should also be noted that not all people living in deprived areas are deprived and not all deprived people live in deprived areas.

Male and female life expectancy in each deprivation decile, quintile and vigintile is shown in [Table 2](#), [Table 3](#), [Table 4](#) and [Table 7](#). [Figure 2](#) illustrates male and female life expectancy (at birth) in each deprivation decile with 95 per cent confidence intervals. Men in the 10 per cent least deprived areas of Scotland (decile 10) could expect to live (from birth) for 81.1 years, 13.4 years longer than in the 10 per cent most deprived areas (67.7 years).

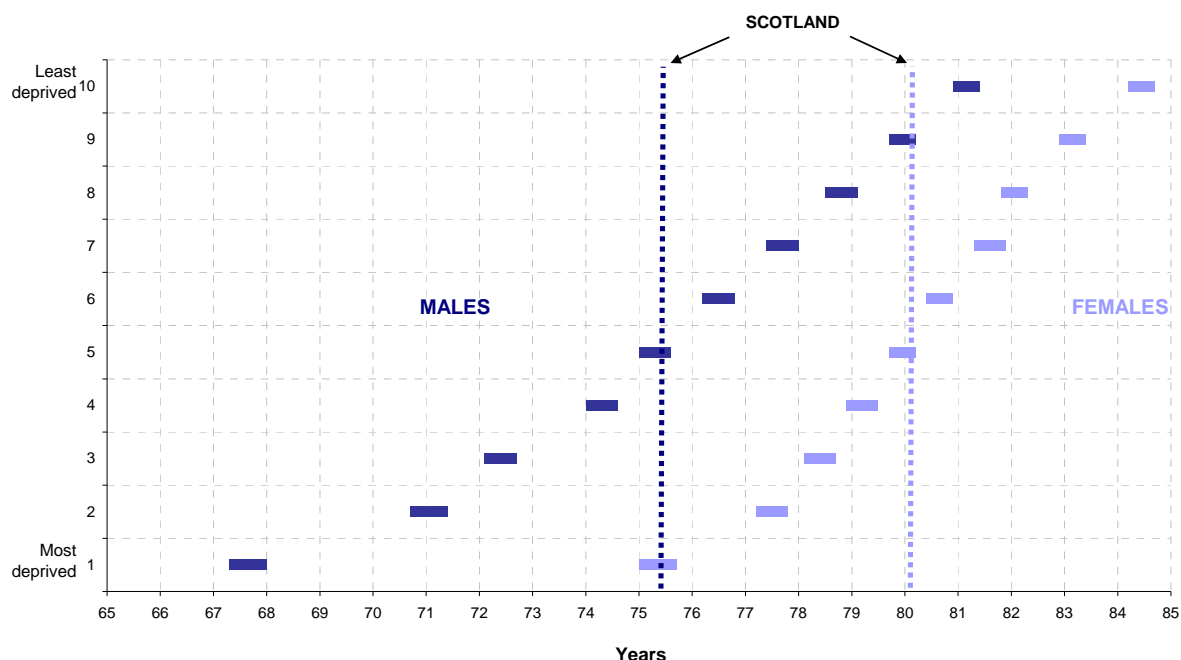
Female life expectancy (at birth) shows the same pattern, although the gap between the most and least deprived areas is smaller than that for men. In the 10 per cent least deprived areas women could expect to live for 84.4 years, 9 years longer than in the 10 per cent most deprived areas (75.4 years).

Figure 2 shows a smooth trend of increasing life expectancy with decreasing deprivation. Figure 2 also illustrates that, as deprivation decreased the gap between male and female life expectancy decreased. For example, in the 10 per cent most deprived areas, women could expect to live 7.7 years more than men, but in the 10 per cent least deprived areas, this gap was shortened to 3.3 years.

People in the 10 per cent most deprived areas had a shorter life expectancy at birth than the Scottish average (7.7 years less for men and 4.7 years less for women). On the other hand, people in the 10 per cent least deprived areas lived longer than the Scottish average (5.7 years more for men and 4.3 years more for women).

The differences in life expectancy at age 65 were narrower, but 65 year old people in the 10 per cent least deprived areas could still look forward to a lifespan longer than the Scottish average (by 2.8 years for men and 2.7 years for women) and could expect to live longer than their counterparts in the 10 per cent most deprived areas by 5.6 years for men and 4.8 years for women.

Figure 2: Life expectancy at birth, 95 per cent confidence intervals for SIMD 2009 Decile areas, 2007-2009 (males and females)



2.3 Life expectancy by Community Health Partnership (CHP) Area

2.3.1 Life expectancy at birth and age 65, 2007-2009

Male and female life expectancy at birth, for each CHP area, is shown in [Table 5](#), [Table 8](#) and [Figure 3](#).

Male life expectancy was shortest for those living in North Glasgow, East Glasgow and South West Glasgow (69.8, 70.1 and 71.2 years respectively). Men living in these areas could expect a life span 5.6, 5.3 and 4.2 years (respectively) shorter than the Scottish average. Men in 11 other CHP areas also had significantly lower life expectancy than the Scottish average, i.e. the confidence intervals did not overlap with that of the Scottish average (this is shown in [Figure 3](#)).

In contrast, male life expectancy was highest in East Dunbartonshire (78.3 years), Perth & Kinross (78.2 years), and Aberdeenshire (78.0 years) – 2.9, 2.8 and 2.6 years (respectively) longer than the Scottish average.

This is consistent with the figures published in [Life Expectancy for Administrative Areas within Scotland, 2007-2009](#), in September 2010, which showed that the Council area with the shortest life expectancy was Glasgow City and that East Dunbartonshire was the Council area with the longest life expectancy.

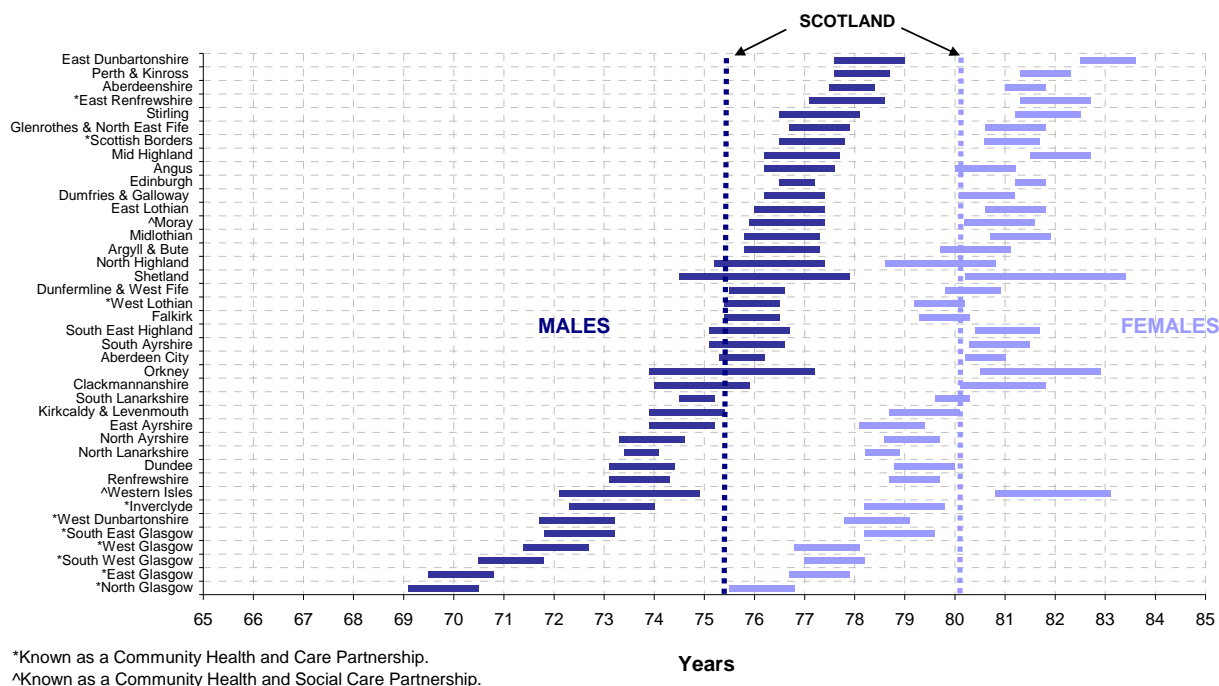
Women in each CHP area had longer life expectancy at birth than men. North Glasgow, East Glasgow and West Glasgow had the shortest female life expectancy at 76.2, 77.3 and 77.5 years. Women living in these areas could expect a shorter lifespan than the Scottish female average by 3.9, 2.8 and 2.6 years respectively. Women in a further 9 CHP areas also had a significantly lower life expectancy than the Scottish average i.e., the confidence intervals did not overlap with that of the Scottish average (this is shown in [Figure 3](#)).

At the opposite end, East Dunbartonshire had the longest female life expectancy at 83.1 years, followed by Mid Highland (82.1 years) and East Renfrewshire (82.0 years), up to 3 years longer than the Scottish average. Again this reflected the picture at Council area level.

The gap between the CHP with the shortest male life expectancy at birth and the CHP with the longest was 8.5 years. This gap was narrower for females at 6.9 years.

The differences in life expectancy at age 65 were narrower, but 65 year old men living in East Dunbartonshire could still look forward to a lifespan 1.8 years longer than the Scottish average and 5.0 years longer than the men living in South West Glasgow. 65 year old women also living in East Dunbartonshire could look forward to a lifespan 1.8 years longer than the Scottish average and 4.3 years longer than women in North Glasgow.

Figure 3: Life expectancy at birth, 95 per cent confidence intervals for Scottish Community Health Partnership Areas, 2007-2009 (males and females)



2.3.2 Comparison between 1997-1999 and 2007-2009

Table 9 and Table 10 show the highest to lowest ranking CHP areas, in terms of male and female life expectancy at birth, and change over time. Figure 4 (link below) illustrates the change in male and female life expectancy, in each CHP area, over a 10 year period (from 1997-1999 to 2007-2009). The last column in Table 9 and Table 10 presents percentage change in estimated life expectancy over the 10 year period and this is illustrated in Figures 5a and 5b.

[Figure 4: Life expectancy at birth, with 95 per cent lower and upper confidence limits, 1997-1999 to 2007-2009, for males and females in each Community Health Partnership area](#) is available on the GROS website.

The improvement in life expectancy at birth for the Scottish level over the 10 year period from 1997-1999 to 2007-2009 was 3.8 per cent for men (2.7 years) and 2.5 per cent for females (2.0 years). Figure 4 shows that life expectancy at birth has significantly improved for the majority of CHP areas (for both males and females) over the 10 year period. However in 12 cases the increase is not significant, and could be a consequence of the volatile nature of life expectancy estimates in small areas. This occurs, for example, in East Renfrewshire, Orkney and Western Isles CHP areas.

Figure 4 also shows that, for some CHP areas, improvements in life expectancy over the 10 year period have not been consistent from year to year. Instead, life expectancy has risen and fallen throughout the 10 year period. These fluctuations are most evident in smaller CHP areas with a small population (for example, Shetland and Orkney) and are likely to be due to random variation in the number of deaths (and the age at death) from one year to the next rather than changes in the main factors driving life expectancy.

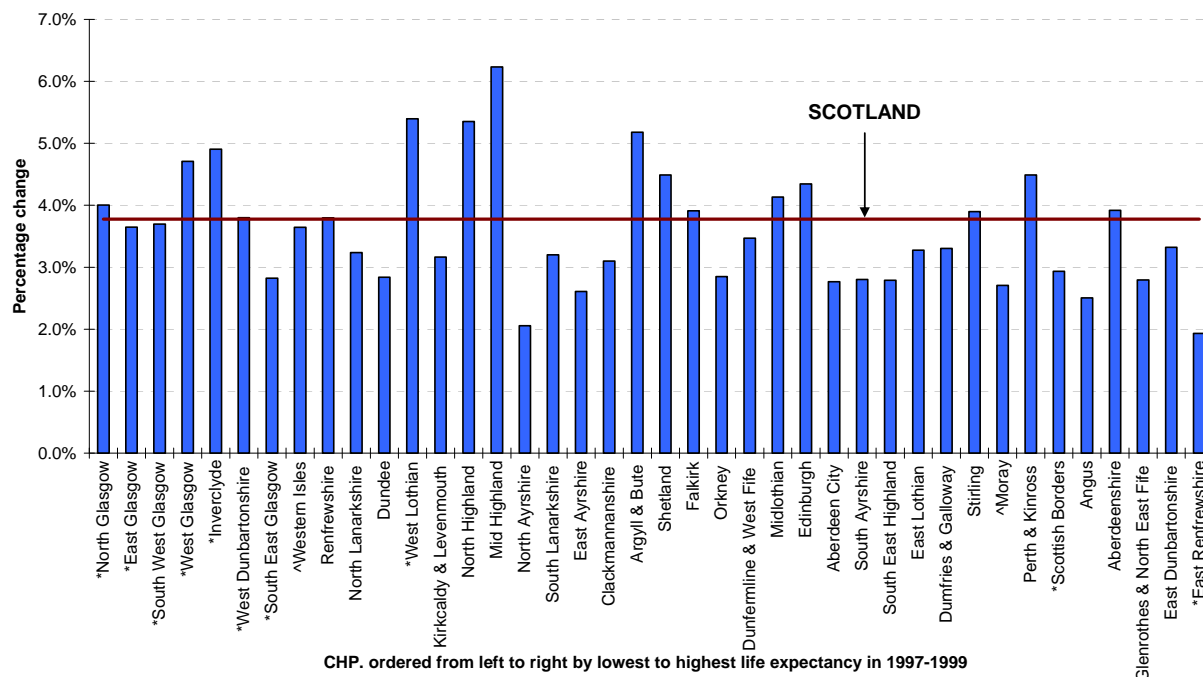
The gap between the area with the highest male life expectancy at birth and the area with the lowest has decreased by 0.8 years (from 9.3 years in 1997-1999 to 8.5 years in 2007-2009); whereas for females this gap has increased by 0.5 years (6.4 years in 1997-1999 to 6.9 years in 2007-2009). The gap between male and female life expectancy narrowed in all but 7 of the CHP areas, with the biggest decrease occurring in North Highland (3.4 years in 2007-2009 compared with 6.0 years in 1997-1999).

As demonstrated in [Figure 5a](#) and [Table 9](#), the largest improvement in male life expectancy between 1997-1999 to 2007-2009 was in Mid Highland (6.2 per cent or 4.5 years), West Lothian (5.4 per cent or 3.9 years) and North Highland (5.4 per cent or 3.9 years) CHP areas. As a result of these improvements, life expectancy for men in these three CHP areas has gone from below to above the national average. The smallest increase in male life expectancy was in East Renfrewshire (1.9 per cent or 1.5 years) and North Ayrshire (2.1 per cent or 1.5 years), although the increase in East Renfrewshire was not significant. West Glasgow and Inverclyde CHP areas had among the lowest male life expectancy at birth in 1997-1999, but over the last 10 years life expectancy there has increased at a faster rate than the average for Scotland. In contrast, life expectancy in East Glasgow and South West Glasgow (CHP areas ranked 2nd and 3rd lowest in 1997-1999) improved but to a lesser extent than the average rate of improvement for Scotland. North Glasgow, despite having an increase in life expectancy just over the Scottish average between 1997-1999 and 2007-2009, remains the CHP area with the lowest male life expectancy at birth.

[Figure 5b](#) and [Table 10](#) shows that the largest increase in female life expectancy between 1997-1999 and 2007-2009 was in East Dunbartonshire CHP area, which had an improvement of 4.5 per cent (3.6 years), and remains one of the best performing CHP areas in terms of life expectancy. Similarly, female life expectancy in Mid Highland, Stirling, Midlothian and Edinburgh CHP areas was higher than the national average in 1997-1999 and has improved at a much greater rate than the Scottish average over the 10 year period. In West Lothian, East Glasgow and South East Glasgow CHP areas female life expectancy was low in 1997-1999 but it has improved at a better rate than the average for Scotland. The lowest increase in female life expectancy was in Glenrothes & North East Fife and East Renfrewshire CHP areas with 1.4 per cent (1.1 years), however for both CHP areas this was not a significant increase. North Glasgow remains the CHP area with the lowest female life expectancy having had an increase, lower than the Scottish average, of 2.2 per cent (1.6 years).

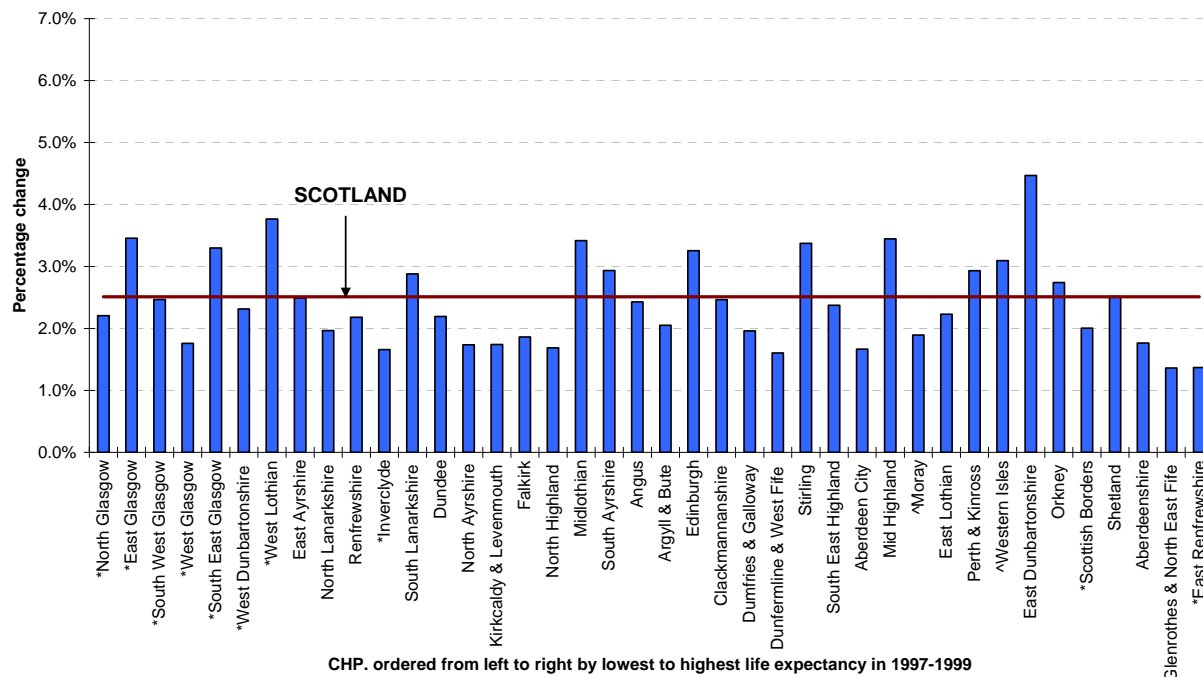
Over the 10 year period, for both male and female life expectancy, there does not seem to be a pattern whereby all of the best performing areas (in terms of life expectancy) in 1997-1999 pull further ahead. The percentage increase in male life expectancy, in all but 3 CHP areas, is larger than that for females. Many CHP areas over the 10 year period have an increase in life expectancy above the Scottish average for one sex but not the other. Only 6 CHP areas had an above average percentage change in life expectancy for both males and females, for example Mid Highland and West Lothian.

Figure 5a: Percentage change in life expectancy, 1997-1999 to 2007-2009, in Scotland and for each individual Community Health Partnership (CHP) Area, Males



*Known as a Community Health and Care Partnership.
 ^Known as a Community Health and Social Care Partnership.

Figure 5b: Percentage change in life expectancy, 1997-1999 to 2007-2009, in Scotland and for each individual Community Health Partnership (CHP) Area, Females



*Known as a Community Health and Care Partnership.
 ^Known as a Community Health and Social Care Partnership.

3. Accuracy of results

Life expectancy, like most statistics, is an estimate which is subject to a margin of error. The accuracy of the results can be indicated by calculating a confidence interval which provides a range of values within which the true underlying life expectancy would lie (with 95 per cent probability). Life expectancy for an area can be said to be significantly different from, for example the Scottish level, if the 95 per cent confidence intervals do not overlap.

The 95 per cent confidence intervals for life expectancy at birth are given in [Table 6](#), [Table 7](#) and [Table 8](#), and are illustrated in [Figure 1](#), [Figure 2](#), [Figure 3](#) and [Figure 4](#) for the Urban/Rural classification, Deprivation Decile and Community Health Partnership areas within Scotland.

There is no simple 'rule of thumb' for the size of confidence intervals. But they largely depend on the size of the population, so confidence intervals for areas with small populations tend to be wider. It is also worth noting that life expectancy results in these areas can be affected by the random variation in the number of annual deaths. This means that the results can vary from year to year.

More information about the methods used to calculate the standard errors and confidence intervals used in this report can be found in the Office for National Statistics methodology paper [Life expectancy at birth: methodological options for small populations](#).

4. Life expectancy notes and definitions

The figures quoted in this publication are all period life expectancies. Period life expectancies are calculated using age specific mortality rates for a given period, with no allowance for any actual or projected future changes in mortality. This means that period life expectancy at birth for a given time period and area is an estimate of the average number of years a new born baby would survive if he/she experienced the particular area's age specific mortality rates for that time period throughout his/her life. The figure reflects mortality among those living in the area in each period, rather than mortality among those born in each area. Life expectancy at birth is not the number of years a baby born in the area during the three year period is expected to live (although the term "can expect to live" is used throughout this publication for ease of reading), both because death rates are likely to change in the future and because many of the new borns may live elsewhere for at least some part of their lives.

This publication gives expectation of life at an 'exact age'. This is the average number of years that those at this age would survive thereafter, if they experienced the particular area's age specific mortality rates for that time period throughout the remainder of their life. These extracts from period life tables (found in [Table 1](#), [Table 2](#), [Table 3](#), [Table 4](#) and [Table 5](#)) are constructed from the estimated population in 2007, 2008 and 2009 and the total number of deaths registered in these years. There were two deaths in both 2007 and 2009 in the zero age group for which the sex was unclassified, for the purposes of calculating these estimates these deaths were treated as male.

In the extracts from period life tables the column headed l_x shows the numbers who would survive to the exact age of x , out of 100,000 persons who, from birth, were subject to the mortality probabilities indicated by the death records for 2007-2009. The column headed e_x^0 shows the expectation of life – that is, the average number of years of life left to

persons aged exactly x who are subject to the 2007-2009 mortality probabilities from age x onwards. For example, 77.7 per cent of the male population and 86.8 per cent of the female population of Large Urban areas could be expected to survive to age 65. A male aged 65 living in a Large Urban area could be expected to live on average another 15.8 years, and a female aged 65 could be expected to live on average another 18.8 years.

Links to further information on the methodology are given in Section 4 of the [Life Expectancy for Administrative Areas within Scotland, 2007-2009](#) publication.

Table 1: Abridged life table, by sex, age and Urban Rural Classification, Scotland 2007-2009

Age x	Scotland ¹				Large Urban Areas				Other Urban Areas				Accessible Small Towns				Remote Small Towns			
	Males		Females		Males		Females		Males		Females		Males		Females		Males		Females	
	l_x	e_x^o	l_x	e_x^o	l_x	e_x^o	l_x	e_x^o	l_x	e_x^o	l_x	e_x^o	l_x	e_x^o	l_x	e_x^o	l_x	e_x^o	l_x	e_x^o
0	100,000	75.4	100,000	80.1	100,000	74.0	100,000	79.5	100,000	75.2	100,000	79.9	100,000	76.4	100,000	80.5	100,000	74.7	100,000	80.0
1	99,521	74.8	99,625	79.5	99,450	73.4	99,623	78.8	99,568	74.6	99,631	79.2	99,450	75.8	99,463	79.9	99,492	74.1	99,633	79.3
5	99,442	70.8	99,548	75.5	99,359	69.5	99,537	74.9	99,478	70.6	99,559	75.3	99,450	71.8	99,420	76.0	99,426	70.1	99,494	75.4
10	99,387	65.9	99,507	70.5	99,316	64.5	99,502	69.9	99,413	65.7	99,500	70.3	99,423	66.8	99,406	71.0	99,393	65.1	99,494	70.4
15	99,322	60.9	99,449	65.6	99,249	59.6	99,454	64.9	99,351	60.7	99,449	65.4	99,341	61.9	99,319	66.0	99,230	60.2	99,409	65.5
20	98,989	56.1	99,291	60.7	98,979	54.7	99,329	60.0	99,029	55.9	99,292	60.5	98,997	57.1	99,185	61.1	98,640	55.6	98,990	60.7
25	98,503	51.4	99,116	55.8	98,568	50.0	99,178	55.1	98,502	51.2	99,106	55.6	98,374	52.4	98,947	56.3	98,005	50.9	98,694	55.9
30	97,890	46.7	98,908	50.9	98,039	45.2	98,970	50.2	97,764	46.6	98,894	50.7	97,760	47.7	98,700	51.4	97,368	46.2	98,583	51.0
35	97,041	42.0	98,570	46.1	97,150	40.6	98,616	45.4	96,867	42.0	98,526	45.9	97,015	43.1	98,427	46.5	96,160	41.8	98,315	46.1
40	96,038	37.5	98,073	41.3	95,927	36.1	98,024	40.6	95,934	37.4	98,100	41.1	96,184	38.4	98,034	41.7	95,187	37.2	97,554	41.4
45	94,739	32.9	97,354	36.6	94,263	31.7	97,149	36.0	94,672	32.8	97,441	36.3	95,072	33.8	97,365	37.0	94,052	32.6	96,912	36.7
50	93,015	28.5	96,254	32.0	92,124	27.4	95,902	31.4	92,969	28.4	96,334	31.7	93,724	29.3	96,390	32.3	92,284	28.2	95,753	32.1
55	90,385	24.3	94,540	27.5	89,030	23.2	93,982	27.0	90,214	24.2	94,513	27.3	91,423	25.0	94,849	27.8	89,495	24.0	94,090	27.6
60	86,541	20.2	92,009	23.2	84,589	19.3	91,074	22.8	86,250	20.2	91,912	23.0	88,217	20.8	92,452	23.5	85,431	20.0	91,749	23.3
65	80,830	16.5	88,099	19.1	77,698	15.8	86,795	18.8	80,680	16.4	87,841	18.9	83,281	16.9	88,808	19.3	79,599	16.3	87,827	19.2
70	72,353	13.1	82,052	15.3	67,941	12.7	79,863	15.2	72,301	13.0	81,886	15.1	75,480	13.3	83,284	15.4	71,304	12.9	82,145	15.4
75	60,700	10.2	73,225	11.9	55,700	10.0	70,499	11.9	60,709	10.0	73,080	11.6	63,801	10.3	74,664	11.9	59,462	10.0	73,636	11.8
80	45,751	7.7	60,224	8.9	40,958	7.6	57,817	8.9	45,465	7.5	59,410	8.7	48,456	7.8	61,349	9.0	45,193	7.3	60,859	8.8
85	28,408	5.8	42,638	6.5	24,822	6.0	40,940	6.6	28,259	5.5	41,354	6.4	30,452	6.0	43,862	6.6	28,050	5.3	43,466	6.3
Age x	Accessible Rural				Remote Rural															
	Males		Females		Males		Females													
	l_x	e_x^o	l_x	e_x^o	l_x	e_x^o	l_x	e_x^o												
0	100,000	77.9	100,000	81.5	100,000	77.6	100,000	81.8												
1	99,585	77.2	99,682	80.7	99,724	76.8	99,729	81.1												
5	99,537	73.2	99,611	76.8	99,601	72.9	99,664	77.1												
10	99,472	68.3	99,562	71.8	99,488	68.0	99,625	72.1												
15	99,447	63.3	99,465	66.9	99,425	63.0	99,608	67.2												
20	99,039	58.5	99,289	62.0	98,976	58.3	99,394	62.3												
25	98,607	53.8	99,183	57.1	98,178	53.8	99,046	57.5												
30	97,964	49.1	98,961	52.2	97,425	49.1	98,888	52.6												
35	97,395	44.4	98,678	47.3	96,779	44.5	98,627	47.7												
40	96,718	39.7	98,295	42.5	96,009	39.8	98,138	43.0												
45	95,905	35.0	97,741	37.7	95,279	35.1	97,603	38.2												
50	94,797	30.4	96,931	33.0	94,076	30.5	96,699	33.5												
55	93,124	25.9	95,629	28.4	92,291	26.0	95,532	28.9												
60	90,303	21.6	93,795	23.9	89,229	21.8	93,533	24.5												
65	85,965	17.6	90,460	19.7	84,671	17.9	90,546	20.2												
70	79,036	13.9	85,230	15.8	77,922	14.2	86,058	16.1												
75	68,626	10.6	77,397	12.1	67,628	11.0	78,373	12.4												
80	54,040	7.8	65,060	9.0	53,743	8.2	66,522	9.2												
85	34,759	5.8	46,704	6.5	34,645	6.3	48,740	6.6												

Note: This abridged life table is constructed from the estimated population in 2007, 2008 and 2009 and the total number of deaths registered in these years. The column headed l_x shows the numbers who would survive to the exact age of x , out of 100,000 persons who, from birth, were subject to the mortality probabilities indicated by the death records for 2007-2009. Column e_x^o shows the expectation of life, that is, the average number of years of life left to persons aged exactly x who are subject to the 2007-2009 mortality probabilities from age x onwards.

¹ Please note that the Scotland-level life expectancy estimate shown here is for use only as a comparator for the corresponding sub-Scotland-level figures. The definitive Scotland-level life expectancy estimate (based on interim life tables) is published by the Office for National Statistics: [National Statistics Online - Interim Life tables](http://www.statistics.gov.uk/life-tables)

Table 2: Abridged life table, by sex, age and deprivation decile, Scotland 2007-2009

Age x	Scotland ¹				1				2				3				4			
	Males		Females		Males		Females		Males		Females		Males		Females		Males		Females	
	l_x	e_x°	l_x	e_x°	l_x	e_x°	l_x	e_x°	l_x	e_x°	l_x	e_x°	l_x	e_x°	l_x	e_x°	l_x	e_x°	l_x	e_x°
0	100,000	75.4	100,000	80.1	100,000	67.7	100,000	75.4	100,000	71.0	100,000	77.5	100,000	72.4	100,000	78.4	100,000	74.3	100,000	79.2
1	99,521	74.8	99,625	79.5	99,388	67.1	99,451	74.8	99,549	70.4	99,654	76.8	99,407	71.8	99,610	77.7	99,451	73.7	99,544	78.5
5	99,442	70.8	99,548	75.5	99,285	63.2	99,342	70.9	99,506	66.4	99,564	72.9	99,277	67.9	99,523	73.8	99,390	69.8	99,492	74.6
10	99,387	65.9	99,507	70.5	99,197	58.2	99,307	65.9	99,458	61.4	99,527	67.9	99,199	63.0	99,429	68.9	99,365	64.8	99,424	69.6
15	99,322	60.9	99,449	65.6	99,079	53.3	99,228	60.9	99,367	56.5	99,504	62.9	99,140	58.0	99,380	63.9	99,318	59.8	99,351	64.7
20	98,989	56.1	99,291	60.7	98,562	48.6	99,024	56.1	98,876	51.7	99,300	58.0	98,686	53.3	99,218	59.0	98,912	55.0	99,164	59.8
25	98,503	51.4	99,116	55.8	97,657	44.0	98,766	51.2	98,312	47.0	99,028	53.2	97,975	48.6	99,007	54.1	98,385	50.3	98,963	54.9
30	97,890	46.7	98,908	50.9	96,388	39.5	98,289	46.4	97,468	42.4	98,676	48.4	97,268	44.0	98,836	49.2	97,685	45.7	98,778	50.0
35	97,041	42.0	98,570	46.1	94,360	35.3	97,468	41.8	95,950	38.0	98,201	43.6	96,213	39.4	98,498	44.4	96,803	41.1	98,381	45.2
40	96,038	37.5	98,073	41.3	91,893	31.2	96,383	37.2	94,298	33.7	97,435	38.9	94,801	35.0	97,868	39.6	95,792	36.5	97,878	40.4
45	94,739	32.9	97,354	36.6	88,457	27.3	95,046	32.7	92,051	29.4	96,268	34.4	92,875	30.6	96,968	35.0	94,402	32.0	97,127	35.7
50	93,015	28.5	96,254	32.0	84,538	23.5	92,937	28.4	89,066	25.3	94,524	30.0	90,784	26.3	95,483	30.5	92,468	27.6	95,875	31.1
55	90,385	24.3	94,540	27.5	79,154	19.9	89,809	24.3	84,774	21.5	92,059	25.7	86,907	22.4	93,320	26.1	89,502	23.4	93,736	26.8
60	86,541	20.2	92,009	23.2	72,018	16.6	85,095	20.5	79,117	17.8	88,228	21.7	81,865	18.6	90,353	21.9	85,056	19.5	90,852	22.6
65	80,830	16.5	88,099	19.1	62,709	13.7	78,861	17.0	71,121	14.6	82,772	18.0	74,450	15.2	84,967	18.1	79,012	15.8	86,642	18.5
70	72,353	13.1	82,052	15.3	50,871	11.3	69,396	13.9	60,343	11.7	75,115	14.5	64,770	12.1	77,545	14.6	69,996	12.5	80,125	14.8
75	60,700	10.2	73,225	11.9	38,360	9.2	58,224	11.1	47,711	9.2	64,700	11.5	52,433	9.3	67,730	11.4	57,315	9.7	71,097	11.4
80	45,751	7.7	60,224	8.9	25,899	7.4	45,470	8.5	33,272	7.0	51,312	8.8	37,551	7.0	54,399	8.6	41,479	7.5	56,678	8.7
85	28,408	5.8	42,638	6.5	14,524	6.3	30,181	6.6	19,058	5.4	34,739	6.8	21,692	5.3	37,018	6.4	25,128	5.8	39,453	6.4
Age x	5				6				7				8				9			
	Males		Females		Males		Females		Males		Females		Males		Females		Males		Females	
	l_x	e_x°	l_x	e_x°	l_x	e_x°	l_x	e_x°	l_x	e_x°	l_x	e_x°	l_x	e_x°	l_x	e_x°	l_x	e_x°	l_x	e_x°
0	100,000	75.3	100,000	79.9	100,000	76.5	100,000	80.6	100,000	77.7	100,000	81.6	100,000	78.8	100,000	82.0	100,000	80.0	100,000	83.1
1	99,471	74.7	99,640	79.2	99,563	75.9	99,700	79.9	99,455	77.1	99,577	81.0	99,668	78.1	99,728	81.2	99,655	79.2	99,750	82.3
5	99,422	70.7	99,589	75.3	99,450	71.9	99,634	75.9	99,395	73.2	99,489	77.0	99,612	74.1	99,668	77.3	99,583	75.3	99,663	78.4
10	99,346	65.8	99,536	70.3	99,337	67.0	99,621	70.9	99,359	68.2	99,451	72.1	99,543	69.1	99,644	72.3	99,561	70.3	99,663	73.4
15	99,257	60.8	99,477	65.4	99,259	62.1	99,505	66.0	99,317	63.2	99,384	67.1	99,491	64.2	99,622	67.3	99,551	65.3	99,621	68.4
20	98,908	56.0	99,358	60.4	98,900	57.3	99,307	61.1	99,010	58.4	99,244	62.2	99,251	59.3	99,476	62.4	99,459	60.4	99,508	63.5
25	98,480	51.3	99,202	55.5	98,508	52.5	99,146	56.2	98,511	53.7	99,087	57.3	98,866	54.6	99,322	57.5	99,251	55.5	99,467	58.5
30	98,000	46.5	99,076	50.6	97,924	47.8	98,948	51.3	98,031	49.0	98,958	52.4	98,451	49.8	99,119	52.6	99,053	50.6	99,383	53.6
35	97,304	41.8	98,710	45.8	97,313	43.1	98,705	46.5	97,546	44.2	98,758	47.5	97,999	45.0	98,923	47.7	98,751	45.8	99,178	48.7
40	96,444	37.2	98,271	41.0	96,527	38.4	98,288	41.6	96,900	39.5	98,330	42.7	97,382	40.3	98,624	42.8	98,332	40.9	98,944	43.8
45	95,230	32.6	97,530	36.2	95,555	33.8	97,671	36.9	95,983	34.8	97,745	37.9	96,821	35.5	98,238	38.0	97,748	36.2	98,474	39.0
50	93,550	28.2	96,445	31.6	94,223	29.2	96,634	32.3	94,756	30.3	97,082	33.1	95,673	30.9	97,573	33.2	96,846	31.5	97,825	34.2
55	90,747	24.0	94,511	27.2	91,869	24.9	95,035	27.8	93,115	25.7	95,838	28.5	94,156	26.3	96,372	28.6	95,472	26.9	96,889	29.5
60	86,793	19.9	91,835	22.9	88,648	20.7	92,611	23.4	90,153	21.5	94,025	24.0	91,579	22.0	94,431	24.2	93,140	22.5	95,403	25.0
65	80,970	16.2	87,910	18.9	83,294	16.9	89,326	19.2	85,775	17.5	90,816	19.8	87,651	17.9	91,282	19.9	89,298	18.4	92,789	20.6
70	72,609	12.8	82,086	15.0	75,834	13.3	84,072	15.2	78,499	13.9	85,459	15.9	81,346	14.1	86,819	15.8	83,169	14.5	88,501	16.5
75	60,410	9.8	73,102	11.6	65,056	10.1	75,337	11.7	67,505	10.7	77,777	12.2	71,469	10.7	79,324	12.1	73,094	11.2	81,510	12.7
80	44,946	7.4	59,247	8.7	49,479	7.5	62,625	8.6	52,837	8.0	65,392	9.1	57,131	7.7	67,233	8.8	58,912	8.3	69,557	9.4
85	27,004	5.6	41,464	6.3	30,148	5.7	44,219	6.1	34,366	5.9	47,628	6.5	37,295	5.5	48,293	6.3	39,235	6.2	51,891	6.8

Table 2 (continued)

Age x	10			
	Males		Females	
	l_x	e_x^o	l_x	e_x^o
0	100,000	81.1	100,000	84.4
1	99,655	80.4	99,661	83.7
5	99,555	76.5	99,595	79.8
10	99,555	71.5	99,534	74.8
15	99,484	66.5	99,479	69.9
20	99,341	61.6	99,375	64.9
25	99,141	56.8	99,271	60.0
30	98,861	51.9	99,236	55.0
35	98,579	47.1	99,175	50.1
40	98,153	42.2	98,956	45.2
45	97,748	37.4	98,574	40.3
50	97,014	32.7	97,952	35.6
55	95,968	28.0	97,118	30.8
60	94,031	23.5	95,764	26.2
65	90,723	19.3	93,468	21.8
70	85,032	15.4	89,975	17.6
75	76,574	11.8	84,369	13.6
80	63,063	8.8	74,289	10.1
85	44,185	6.6	57,329	7.3

Note: This abridged life table is constructed from the estimated population in 2007, 2008 and 2009 and the total number of deaths registered in these years. The column headed l_x shows the numbers who would survive to the exact age of x, out of 100,000 persons who, from birth, were subject to the mortality probabilities indicated by the death records for 2007-2009.

Column e_x^o shows the expectation of life, that is, the average number of years of life left to persons aged exactly x who are subject to the 2007-2009 mortality probabilities from age x onwards.

¹ Please note that the Scotland-level life expectancy estimate shown here is for use only as a comparator for the corresponding sub-Scotland-level figures. The definitive Scotland-level life expectancy estimate (based on interim life tables) is published by the Office for National Statistics: [National Statistics Online - Interim Life tables](#)

Table 3: Abridged life table, by sex, age and deprivation quintile, Scotland 2007-2009

Age x	Scotland ¹				1				2				3				4			
	Males		Females		Males		Females		Males		Females		Males		Females		Males		Females	
	l_x	e_x^o	l_x	e_x^o	l_x	e_x^o	l_x	e_x^o	l_x	e_x^o	l_x	e_x^o	l_x	e_x^o	l_x	e_x^o	l_x	e_x^o	l_x	e_x^o
0	100,000	75.4	100,000	80.1	100,000	69.3	100,000	76.5	100,000	73.3	100,000	78.8	100,000	75.9	100,000	80.3	100,000	78.3	100,000	81.8
1	99,521	74.8	99,625	79.5	99,463	68.7	99,546	75.8	99,428	72.8	99,577	78.1	99,517	75.3	99,670	79.5	99,562	77.6	99,655	81.1
5	99,442	70.8	99,548	75.5	99,389	64.8	99,446	71.9	99,332	68.8	99,508	74.2	99,436	71.3	99,611	75.6	99,504	73.6	99,581	77.2
10	99,387	65.9	99,507	70.5	99,320	59.8	99,410	66.9	99,281	63.9	99,427	69.2	99,342	66.4	99,578	70.6	99,451	68.7	99,550	72.2
15	99,322	60.9	99,449	65.6	99,215	54.9	99,359	61.9	99,228	58.9	99,366	64.3	99,258	61.5	99,490	65.7	99,404	63.7	99,506	67.2
20	98,989	56.1	99,291	60.7	98,711	50.1	99,155	57.1	98,798	54.2	99,192	59.4	98,904	56.7	99,332	60.8	99,131	58.9	99,362	62.3
25	98,503	51.4	99,116	55.8	97,970	45.5	98,891	52.2	98,174	49.5	98,985	54.5	98,494	51.9	99,174	55.9	98,692	54.1	99,207	57.4
30	97,890	46.7	98,908	50.9	96,913	41.0	98,475	47.4	97,471	44.8	98,808	49.6	97,965	47.2	99,013	51.0	98,245	49.4	99,039	52.5
35	97,041	42.0	98,570	46.1	95,142	36.7	97,825	42.7	96,503	40.2	98,440	44.8	97,310	42.5	98,708	46.1	97,777	44.6	98,841	47.6
40	96,038	37.5	98,073	41.3	93,089	32.4	96,898	38.1	95,293	35.7	97,874	40.0	96,487	37.8	98,280	41.3	97,147	39.9	98,481	42.7
45	94,739	32.9	97,354	36.6	90,257	28.4	95,646	33.6	93,637	31.3	97,048	35.3	95,395	33.2	97,602	36.6	96,410	35.1	97,997	37.9
50	93,015	28.5	96,254	32.0	86,807	24.4	93,719	29.2	91,626	26.9	95,680	30.8	93,892	28.7	96,541	31.9	95,223	30.6	97,333	33.2
55	90,385	24.3	94,540	27.5	81,970	20.7	90,929	25.0	88,207	22.9	93,529	26.5	91,314	24.4	94,774	27.5	93,644	26.0	96,110	28.6
60	86,541	20.2	92,009	23.2	75,580	17.2	86,671	21.1	83,465	19.0	90,605	22.2	87,727	20.3	92,225	23.2	90,873	21.7	94,234	24.1
65	80,830	16.5	88,099	19.1	66,923	14.1	80,845	17.5	76,744	15.5	85,826	18.3	82,137	16.5	88,620	19.0	86,715	17.7	91,054	19.9
70	72,353	13.1	82,052	15.3	55,593	11.5	72,320	14.2	67,399	12.3	78,860	14.7	74,220	13.0	83,076	15.1	79,902	14.0	86,130	15.8
75	60,700	10.2	73,225	11.9	42,992	9.2	61,526	11.3	54,884	9.5	69,436	11.4	62,709	10.0	74,209	11.6	69,438	10.7	78,538	12.1
80	45,751	7.7	60,224	8.9	29,522	7.2	48,440	8.7	39,522	7.3	55,559	8.6	47,176	7.4	60,904	8.6	54,914	7.8	66,296	8.9
85	28,408	5.8	42,638	6.5	16,746	5.8	32,494	6.7	23,405	5.6	38,244	6.4	28,544	5.7	42,812	6.2	35,783	5.7	47,949	6.4

Age x	5			
	Males		Females	
	l_x	e_x^o	l_x	e_x^o
0	100,000	80.5	100,000	83.8
1	99,655	79.8	99,708	83.0
5	99,570	75.9	99,631	79.1
10	99,558	70.9	99,601	74.1
15	99,518	65.9	99,553	69.1
20	99,400	61.0	99,444	64.2
25	99,196	56.1	99,369	59.2
30	98,957	51.2	99,310	54.3
35	98,665	46.4	99,174	49.3
40	98,242	41.6	98,947	44.5
45	97,745	36.8	98,520	39.6
50	96,925	32.1	97,884	34.9
55	95,712	27.4	96,998	30.2
60	93,569	23.0	95,576	25.6
65	89,985	18.8	93,116	21.2
70	84,066	15.0	89,219	17.0
75	74,782	11.5	82,916	13.1
80	60,928	8.6	71,889	9.7
85	41,651	6.4	54,559	7.0

Note: This abridged life table is constructed from the estimated population in 2007, 2008 and 2009 and the total number of deaths registered in these years. The column headed l_x shows the numbers who would survive to the exact age of x, out of 100,000 persons who, from birth, were subject to the mortality probabilities indicated by the death records for 2007-2009. Column e_x^o shows the expectation of life, that is, the average number of years of life left to persons aged exactly x who are subject to the 2007-2009 mortality probabilities from age x onwards.

¹ Please note that the Scotland-level life expectancy estimate shown here is for use only as a comparator for the corresponding sub-Scotland-level figures. The definitive Scotland-level life expectancy estimate (based on interim life tables) is published by the Office for National Statistics: [National Statistics Online - Interim Life tables](#)

Table 4: Abridged life table, by sex, age and deprivation vigintile, Scotland 2007-2009

Age x	Scotland ¹				1				2				3				4			
	Males		Females		Males		Females		Males		Females		Males		Females		Males		Females	
	l_x	e_x°	l_x	e_x°	l_x	e_x°	l_x	e_x°	l_x	e_x°	l_x	e_x°	l_x	e_x°	l_x	e_x°	l_x	e_x°	l_x	e_x°
0	100,000	75.4	100,000	80.1	100,000	66.1	100,000	74.6	100,000	69.3	100,000	76.1	100,000	70.3	100,000	77.5	100,000	71.7	100,000	77.6
1	99,521	74.8	99,625	79.5	99,327	65.6	99,424	74.0	99,453	68.6	99,482	75.5	99,555	69.7	99,805	76.7	99,541	71.1	99,490	77.0
5	99,442	70.8	99,548	75.5	99,237	61.7	99,331	70.1	99,337	64.7	99,356	71.6	99,514	65.7	99,696	72.7	99,497	67.1	99,419	73.0
10	99,387	65.9	99,507	70.5	99,172	56.7	99,308	65.1	99,225	59.8	99,308	66.7	99,468	60.7	99,626	67.8	99,447	62.1	99,419	68.0
15	99,322	60.9	99,449	65.6	99,107	51.7	99,241	60.1	99,053	54.9	99,215	61.7	99,380	55.8	99,626	62.8	99,354	57.2	99,372	63.0
20	98,989	56.1	99,291	60.7	98,637	47.0	98,975	55.3	98,490	50.2	99,076	56.8	98,915	51.0	99,382	57.9	98,836	52.5	99,207	58.1
25	98,503	51.4	99,116	55.8	97,619	42.4	98,744	50.4	97,709	45.6	98,790	52.0	98,218	46.4	99,109	53.1	98,401	47.7	98,936	53.3
30	97,890	46.7	98,908	50.9	96,395	37.9	98,282	45.6	96,390	41.2	98,297	47.2	97,212	41.8	98,817	48.2	97,721	43.0	98,522	48.5
35	97,041	42.0	98,570	46.1	94,042	33.8	97,449	41.0	94,692	36.9	97,489	42.6	95,607	37.5	98,358	43.4	96,290	38.6	98,028	43.7
40	96,038	37.5	98,073	41.3	91,123	29.8	96,256	36.5	92,672	32.6	96,509	38.0	93,826	33.1	97,557	38.8	94,768	34.2	97,300	39.1
45	94,739	32.9	97,354	36.6	86,768	26.2	94,934	31.9	90,132	28.5	95,158	33.5	91,577	28.9	96,335	34.2	92,524	29.9	96,187	34.5
50	93,015	28.5	96,254	32.0	82,274	22.5	92,678	27.7	86,818	24.4	93,195	29.1	88,364	24.8	94,598	29.8	89,765	25.8	94,436	30.1
55	90,385	24.3	94,540	27.5	76,650	19.0	89,293	23.6	81,688	20.8	90,319	25.0	84,132	21.0	91,969	25.6	85,413	22.0	92,135	25.8
60	86,541	20.2	92,009	23.2	68,777	15.8	84,049	19.9	75,304	17.4	86,087	21.1	77,598	17.5	88,100	21.6	80,600	18.1	88,341	21.8
65	80,830	16.5	88,099	19.1	58,475	13.2	77,066	16.5	67,045	14.2	80,564	17.4	69,353	14.3	82,185	18.0	72,849	14.8	83,309	17.9
70	72,353	13.1	82,052	15.3	46,567	10.9	67,052	13.6	55,312	11.7	71,624	14.2	58,164	11.6	74,577	14.6	62,500	11.8	75,609	14.5
75	60,700	10.2	73,225	11.9	34,230	8.9	55,590	10.9	42,660	9.4	60,756	11.3	45,609	9.1	64,310	11.5	49,795	9.2	65,054	11.4
80	45,751	7.7	60,224	8.9	21,831	7.6	42,564	8.5	30,272	7.3	48,294	8.6	31,492	7.0	51,244	8.8	35,037	7.0	51,369	8.8
85	28,408	5.8	42,638	6.5	12,175	6.7	27,365	6.8	17,057	5.9	32,953	6.4	18,241	5.3	34,619	6.8	19,862	5.5	34,846	6.8
Age x	5				6				7				8				9			
	Males		Females		Males		Females		Males		Females		Males		Females		Males		Females	
	l_x	e_x°	l_x	e_x°	l_x	e_x°	l_x	e_x°	l_x	e_x°	l_x	e_x°	l_x	e_x°	l_x	e_x°	l_x	e_x°	l_x	e_x°
0	100,000	72.4	100,000	78.1	100,000	72.4	100,000	78.7	100,000	73.9	100,000	78.9	100,000	74.7	100,000	79.4	100,000	74.9	100,000	79.4
1	99,413	71.9	99,554	77.4	99,400	71.8	99,671	78.0	99,427	73.3	99,511	78.3	99,475	74.1	99,577	78.8	99,463	74.3	99,509	78.8
5	99,276	68.0	99,459	73.5	99,278	67.9	99,593	74.0	99,379	69.4	99,460	74.3	99,402	70.2	99,525	74.8	99,387	70.4	99,456	74.8
10	99,201	63.0	99,381	68.6	99,197	62.9	99,484	69.1	99,354	64.4	99,353	69.4	99,376	65.2	99,497	69.8	99,309	65.4	99,376	69.9
15	99,132	58.0	99,381	63.6	99,149	58.0	99,384	64.2	99,308	59.4	99,280	64.5	99,330	60.2	99,424	64.9	99,217	60.5	99,278	65.0
20	98,664	53.3	99,278	58.6	98,710	53.2	99,162	59.3	98,920	54.6	99,066	59.6	98,905	55.4	99,266	60.0	98,883	55.7	99,127	60.1
25	97,945	48.7	99,085	53.8	98,005	48.6	98,933	54.5	98,444	49.9	98,912	54.7	98,323	50.8	99,016	55.1	98,535	50.9	98,928	55.2
30	97,329	44.0	98,963	48.8	97,203	44.0	98,710	49.6	97,644	45.3	98,780	49.8	97,717	46.1	98,782	50.3	98,117	46.1	98,809	50.2
35	96,253	39.4	98,674	43.9	96,167	39.4	98,321	44.8	96,654	40.7	98,382	45.0	96,940	41.4	98,384	45.5	97,456	41.4	98,467	45.4
40	94,992	34.9	97,981	39.2	94,602	35.0	97,756	40.0	95,570	36.1	97,951	40.1	96,001	36.8	97,810	40.7	96,506	36.8	98,052	40.6
45	93,158	30.6	96,943	34.6	92,580	30.7	96,997	35.3	94,218	31.6	97,288	35.4	94,573	32.3	96,971	36.0	95,018	32.3	97,250	35.9
50	90,816	26.3	95,330	30.2	90,741	26.3	95,642	30.8	92,121	27.3	96,052	30.8	92,799	27.9	95,705	31.5	93,071	27.9	96,113	31.3
55	86,840	22.4	93,059	25.9	86,962	22.3	93,586	26.4	88,708	23.2	93,812	26.5	90,276	23.6	93,668	27.1	90,341	23.7	94,174	26.9
60	81,995	18.6	89,602	21.8	81,726	18.6	91,106	22.0	84,382	19.3	91,242	22.2	85,709	19.7	90,478	23.0	86,204	19.7	91,523	22.6
65	74,671	15.1	84,385	17.9	74,221	15.2	85,553	18.3	78,003	15.7	86,805	18.2	80,007	15.9	86,493	18.9	80,238	16.0	87,388	18.5
70	65,164	12.0	76,365	14.6	64,370	12.2	78,735	14.7	69,075	12.4	80,396	14.4	70,905	12.7	79,868	15.3	71,569	12.6	81,847	14.6
75	53,269	9.1	66,258	11.4	51,595	9.6	69,215	11.3	56,017	9.7	70,995	11.0	58,626	9.8	71,205	11.8	59,471	9.7	72,885	11.1
80	37,393	6.9	53,701	8.5	37,680	7.2	55,102	8.6	40,391	7.5	56,038	8.3	42,579	7.5	57,305	9.1	43,706	7.3	57,985	8.3
85	21,080	5.3	36,398	6.3	22,260	5.4	37,635	6.5	24,413	5.7	37,842	6.1	25,855	5.8	41,077	6.7	26,601	5.3	40,433	5.9

Table 4 (continued)

Age x	10				11				12				13				14			
	Males		Females		Males		Females		Males		Females		Males		Females		Males		Females	
	l_x	e_x^o	l_x	e_x^o	l_x	e_x^o	l_x	e_x^o	l_x	e_x^o	l_x	e_x^o	l_x	e_x^o	l_x	e_x^o	l_x	e_x^o	l_x	e_x^o
0	100,000	75.7	100,000	80.5	100,000	75.9	100,000	80.7	100,000	77.1	100,000	80.6	100,000	77.8	100,000	81.5	100,000	77.6	100,000	81.8
1	99,479	75.1	99,766	79.7	99,674	75.2	99,779	79.8	99,448	76.6	99,619	79.9	99,613	77.1	99,709	80.7	99,291	77.2	99,439	81.2
5	99,455	71.1	99,716	75.7	99,574	71.3	99,726	75.9	99,324	72.7	99,540	76.0	99,589	73.1	99,633	76.7	99,198	73.3	99,338	77.3
10	99,382	66.1	99,690	70.8	99,368	66.4	99,726	70.9	99,299	67.7	99,515	71.0	99,564	68.1	99,581	71.8	99,150	68.3	99,313	72.3
15	99,295	61.2	99,667	65.8	99,255	61.5	99,607	66.0	99,255	62.7	99,401	66.0	99,500	63.2	99,514	66.8	99,129	63.3	99,247	67.4
20	98,932	56.4	99,579	60.8	98,809	56.7	99,415	61.1	98,986	57.9	99,196	61.2	99,238	58.3	99,343	61.9	98,777	58.5	99,138	62.5
25	98,427	51.7	99,465	55.9	98,364	52.0	99,315	56.1	98,650	53.1	98,966	56.3	98,846	53.6	99,254	57.0	98,170	53.9	98,912	57.6
30	97,888	47.0	99,332	51.0	97,544	47.4	99,096	51.3	98,338	48.2	98,791	51.4	98,379	48.8	99,069	52.1	97,676	49.1	98,841	52.6
35	97,159	42.3	98,943	46.2	96,983	42.7	98,889	46.4	97,670	43.5	98,511	46.6	97,865	44.1	98,896	47.2	97,222	44.3	98,612	47.7
40	96,380	37.6	98,482	41.4	95,929	38.1	98,416	41.6	97,171	38.7	98,149	41.7	97,157	39.4	98,309	42.5	96,639	39.6	98,341	42.9
45	95,419	33.0	97,799	36.6	94,800	33.5	97,809	36.8	96,356	34.1	97,522	37.0	96,218	34.7	97,712	37.7	95,744	34.9	97,769	38.1
50	93,991	28.4	96,762	32.0	93,421	29.0	96,781	32.2	95,069	29.5	96,478	32.3	94,944	30.1	97,040	32.9	94,563	30.3	97,114	33.3
55	91,118	24.2	94,832	27.6	90,962	24.7	94,987	27.7	92,817	25.1	95,064	27.8	93,323	25.6	95,734	28.4	92,902	25.8	95,931	28.7
60	87,341	20.2	92,132	23.3	87,966	20.5	92,286	23.5	89,376	21.0	92,915	23.4	90,195	21.4	93,946	23.8	90,103	21.6	94,094	24.2
65	81,656	16.4	88,409	19.2	82,175	16.7	89,032	19.3	84,440	17.1	89,601	19.1	85,696	17.4	90,444	19.7	85,839	17.5	91,171	19.9
70	73,612	12.9	82,302	15.5	74,010	13.3	83,785	15.3	77,688	13.4	84,342	15.2	78,045	13.9	84,933	15.8	78,923	13.8	85,964	16.0
75	61,320	10.0	73,300	12.1	63,339	10.1	75,031	11.8	66,804	10.1	75,629	11.6	67,814	10.6	76,759	12.2	67,186	10.8	78,761	12.2
80	46,181	7.5	60,514	9.1	47,846	7.6	62,786	8.6	51,159	7.5	62,431	8.6	52,444	8.0	64,273	9.1	53,207	8.0	66,492	9.0
85	27,376	5.9	42,512	6.9	29,316	5.8	44,755	6.1	31,007	5.7	43,658	6.2	34,013	5.9	46,368	6.6	34,709	5.9	48,919	6.4
Age x	15				16				17				18				19			
	Males		Females		Males		Females		Males		Females		Males		Females		Males		Females	
	l_x	e_x^o	l_x	e_x^o	l_x	e_x^o	l_x	e_x^o	l_x	e_x^o	l_x	e_x^o	l_x	e_x^o	l_x	e_x^o	l_x	e_x^o	l_x	e_x^o
0	100,000	78.4	100,000	81.8	100,000	79.3	100,000	82.3	100,000	80.0	100,000	83.0	100,000	80.0	100,000	83.3	100,000	80.5	100,000	84.0
1	99,684	77.6	99,726	81.0	99,652	78.5	99,731	81.5	99,692	79.2	99,735	82.2	99,614	79.3	99,765	82.5	99,633	79.8	99,693	83.2
5	99,616	73.7	99,726	77.0	99,606	74.6	99,609	77.6	99,647	75.2	99,664	78.3	99,515	75.4	99,664	78.5	99,534	75.9	99,614	79.3
10	99,505	68.7	99,726	72.0	99,583	69.6	99,562	72.6	99,625	70.3	99,664	73.3	99,492	70.4	99,664	73.5	99,534	70.9	99,590	74.3
15	99,463	63.8	99,704	67.0	99,521	64.6	99,539	67.6	99,606	65.3	99,580	68.3	99,492	65.4	99,664	68.5	99,412	65.9	99,568	69.3
20	99,150	59.0	99,562	62.1	99,357	59.7	99,388	62.7	99,571	60.3	99,480	63.4	99,336	60.5	99,538	63.6	99,221	61.1	99,466	64.4
25	98,758	54.2	99,351	57.2	98,981	54.9	99,300	57.8	99,386	55.4	99,437	58.4	99,106	55.6	99,498	58.6	98,994	56.2	99,387	59.4
30	98,366	49.4	99,150	52.3	98,541	50.2	99,094	52.9	99,255	50.5	99,365	53.5	98,846	50.8	99,402	53.7	98,651	51.4	99,363	54.4
35	97,872	44.6	98,928	47.4	98,134	45.4	98,925	48.0	98,977	45.6	99,189	48.5	98,521	45.9	99,166	48.8	98,291	46.6	99,363	49.4
40	97,255	39.9	98,586	42.6	97,518	40.6	98,670	43.1	98,410	40.9	99,026	43.6	98,254	41.0	98,856	44.0	97,826	41.8	99,099	44.6
45	96,689	35.1	98,185	37.8	96,960	35.9	98,300	38.3	97,800	36.1	98,519	38.8	97,698	36.3	98,423	39.1	97,393	37.0	98,636	39.8
50	95,334	30.6	97,452	33.0	96,022	31.2	97,705	33.5	96,916	31.4	97,840	34.1	96,777	31.6	97,806	34.4	96,615	32.2	97,957	35.0
55	93,861	26.0	96,234	28.4	94,460	26.7	96,518	28.9	95,547	26.8	96,937	29.4	95,398	27.0	96,837	29.7	95,615	27.5	97,071	30.3
60	91,082	21.7	94,119	24.0	92,088	22.3	94,751	24.3	93,190	22.4	95,347	24.8	93,090	22.6	95,455	25.1	93,419	23.1	95,616	25.7
65	86,883	17.7	90,873	19.8	88,436	18.1	91,696	20.1	89,247	18.3	92,871	20.4	89,354	18.4	92,696	20.8	90,094	18.9	93,307	21.3
70	80,537	13.9	86,121	15.7	82,177	14.3	87,527	15.9	82,847	14.5	88,296	16.3	83,498	14.6	88,696	16.6	83,943	15.1	89,585	17.1
75	70,194	10.5	78,743	12.0	72,780	10.8	79,912	12.2	72,982	11.2	81,718	12.5	73,205	11.3	81,272	12.9	74,944	11.6	83,597	13.1
80	55,158	7.7	66,376	8.7	59,198	7.7	68,116	8.9	58,688	8.3	69,240	9.3	59,144	8.3	69,871	9.6	61,695	8.6	73,251	9.6
85	36,341	5.4	47,552	6.2	38,261	5.6	49,070	6.3	39,032	6.2	51,320	6.6	39,452	6.2	52,498	6.9	42,869	6.2	56,354	6.8

Table 4 (continued)

Age x	20			
	Males		Females	
	l_x	e_x^o	l_x	e_x^o
0	100,000	81.8	100,000	84.9
1	99,677	81.0	99,629	84.2
5	99,577	77.1	99,575	80.3
10	99,577	72.1	99,477	75.3
15	99,556	67.1	99,389	70.4
20	99,456	62.2	99,282	65.5
25	99,277	57.3	99,160	60.6
30	99,056	52.4	99,114	55.6
35	98,864	47.5	98,988	50.6
40	98,483	42.7	98,817	45.7
45	98,107	37.9	98,521	40.9
50	97,419	33.1	97,956	36.1
55	96,327	28.5	97,172	31.4
60	94,633	23.9	95,911	26.7
65	91,341	19.7	93,627	22.3
70	86,103	15.7	90,357	18.0
75	78,184	12.1	85,123	14.0
80	64,415	9.1	75,305	10.5
85	45,482	6.9	58,273	7.8

Note: This abridged life table is constructed from the estimated population in 2007, 2008 and 2009 and the total number of deaths registered in these years. The column headed l_x shows the numbers who would survive to the exact age of x, out of 100,000 persons who, from birth, were subject to the mortality probabilities indicated by the death records for 2007-2009.

Column e_x^o shows the expectation of life, that is, the average number of years of life left to persons aged exactly x who are subject to the 2007-2009 mortality probabilities from age x onwards.

¹ Please note that the Scotland-level life expectancy estimate shown here is for use only as a comparator for the corresponding sub-Scotland-level figures. The definitive Scotland-level life expectancy estimate (based on interim life tables) is published by the Office for National Statistics: [National Statistics Online - Interim Life tables](#)

Table 5: Abridged life table, by sex, age and Community Health Partnership, Scotland 2007-2009

Age x	Scotland ¹				Aberdeen City				Aberdeenshire				Angus				Argyll & Bute			
	Males		Females		Males		Females		Males		Females		Males		Females		Males		Females	
	<i>l_x</i>	<i>e_x^o</i>	<i>l_x</i>	<i>e_x^o</i>	<i>l_x</i>	<i>e_x^o</i>	<i>l_x</i>	<i>e_x^o</i>	<i>l_x</i>	<i>e_x^o</i>	<i>l_x</i>	<i>e_x^o</i>	<i>l_x</i>	<i>e_x^o</i>	<i>l_x</i>	<i>e_x^o</i>	<i>l_x</i>	<i>e_x^o</i>	<i>l_x</i>	<i>e_x^o</i>
0	100,000	75.4	100,000	80.1	100,000	75.7	100,000	80.6	100,000	78.0	100,000	81.4	100,000	76.9	100,000	80.6	100,000	76.5	100,000	80.4
1	99,521	74.8	99,625	79.5	99,555	75.1	99,808	79.8	99,722	77.2	99,704	80.6	99,208	76.5	99,770	79.8	99,757	75.7	99,829	79.5
5	99,442	70.8	99,548	75.5	99,524	71.1	99,745	75.8	99,653	73.3	99,679	76.7	99,208	72.5	99,712	75.8	99,434	72.0	99,743	75.6
10	99,387	65.9	99,507	70.5	99,524	66.1	99,710	70.8	99,630	68.3	99,604	71.7	99,045	67.6	99,598	70.9	99,434	67.0	99,667	70.7
15	99,322	60.9	99,449	65.6	99,493	61.1	99,710	65.8	99,609	63.3	99,470	66.8	99,045	62.6	99,495	66.0	99,196	62.1	99,604	65.7
20	98,989	56.1	99,291	60.7	99,278	56.2	99,584	60.9	99,165	58.6	99,223	62.0	98,764	57.8	99,178	61.2	98,857	57.3	99,169	61.0
25	98,503	51.4	99,116	55.8	98,880	51.4	99,499	56.0	98,693	53.8	98,963	57.1	97,826	53.3	98,797	56.4	98,221	52.7	98,824	56.2
30	97,890	46.7	98,908	50.9	98,445	46.7	99,345	51.1	98,114	49.1	98,779	52.2	96,787	48.9	98,253	51.7	97,590	48.0	98,615	51.3
35	97,041	42.0	98,570	46.1	97,593	42.1	99,101	46.2	97,296	44.5	98,456	47.4	96,029	44.2	98,017	46.8	96,814	43.4	98,198	46.5
40	96,038	37.5	98,073	41.3	96,681	37.4	98,650	41.4	96,573	39.8	98,035	42.6	95,239	39.6	97,592	42.0	96,207	38.6	97,691	41.7
45	94,739	32.9	97,354	36.6	95,318	32.9	98,045	36.6	95,639	35.2	97,608	37.8	94,407	34.9	96,817	37.3	95,418	33.9	96,809	37.1
50	93,015	28.5	96,254	32.0	93,698	28.4	96,778	32.1	94,435	30.6	96,822	33.0	93,287	30.3	95,983	32.6	94,143	29.3	95,980	32.4
55	90,385	24.3	94,540	27.5	91,014	24.2	95,079	27.6	92,876	26.1	95,624	28.4	90,743	26.1	94,628	28.1	91,829	25.0	94,227	28.0
60	86,541	20.2	92,009	23.2	86,995	20.2	92,850	23.2	90,298	21.8	93,800	23.9	88,319	21.7	92,451	23.7	87,853	21.0	91,312	23.8
65	80,830	16.5	88,099	19.1	81,416	16.4	89,117	19.1	85,892	17.8	90,322	19.8	84,290	17.6	89,127	19.5	83,011	17.1	87,829	19.6
70	72,353	13.1	82,052	15.3	72,510	13.1	83,170	15.2	78,661	14.2	85,927	15.6	77,328	14.0	83,796	15.5	75,880	13.5	82,363	15.7
75	60,700	10.2	73,225	11.9	60,539	10.2	73,492	11.9	68,429	10.9	77,660	12.0	66,702	10.8	76,199	11.8	65,136	10.3	74,624	12.1
80	45,751	7.7	60,224	8.9	45,531	7.8	61,704	8.7	54,069	8.1	64,962	8.9	52,236	8.2	64,113	8.6	50,501	7.6	62,484	9.0
85	28,408	5.8	42,638	6.5	28,123	6.1	43,845	6.3	36,290	5.9	46,420	6.5	33,472	6.3	46,443	5.9	30,935	5.8	45,965	6.3
Age x	Clackmannanshire				Dumfries & Galloway				Dundee				Dunfermline & West Fife				East Ayrshire			
	Males		Females		Males		Females		Males		Females		Males		Females		Males		Females	
	<i>l_x</i>	<i>e_x^o</i>	<i>l_x</i>	<i>e_x^o</i>	<i>l_x</i>	<i>e_x^o</i>	<i>l_x</i>	<i>e_x^o</i>	<i>l_x</i>	<i>e_x^o</i>	<i>l_x</i>	<i>e_x^o</i>	<i>l_x</i>	<i>e_x^o</i>	<i>l_x</i>	<i>e_x^o</i>	<i>l_x</i>	<i>e_x^o</i>	<i>l_x</i>	<i>e_x^o</i>
0	100,000	75.0	100,000	80.9	100,000	76.8	100,000	80.6	100,000	73.7	100,000	79.4	100,000	76.0	100,000	80.4	100,000	74.6	100,000	78.8
1	99,580	74.3	99,777	80.1	99,469	76.2	99,641	79.9	99,353	73.2	99,407	78.9	99,528	75.4	99,431	79.8	99,390	74.0	99,283	78.3
5	99,580	70.3	99,658	76.2	99,469	72.2	99,503	76.0	99,311	69.2	99,407	74.9	99,489	71.4	99,431	75.8	99,340	70.0	99,177	74.4
10	99,580	65.3	99,658	71.2	99,469	67.2	99,503	71.0	99,121	64.4	99,358	69.9	99,450	66.5	99,431	70.8	99,340	65.0	99,177	69.4
15	99,475	60.4	99,552	66.3	99,469	62.2	99,503	66.0	98,906	59.5	99,173	65.1	99,450	61.5	99,313	65.9	99,296	60.1	99,079	64.5
20	99,176	55.5	99,552	61.3	99,215	57.4	99,306	61.2	98,588	54.7	99,011	60.2	99,267	56.6	99,275	60.9	98,772	55.4	98,870	59.6
25	98,376	51.0	99,191	56.5	98,650	52.7	98,872	56.4	98,234	49.9	98,796	55.3	98,555	51.9	98,991	56.1	98,119	50.7	98,778	54.7
30	97,566	46.4	98,949	51.6	97,788	48.1	98,567	51.6	97,635	45.2	98,431	50.5	97,981	47.2	98,825	51.2	97,384	46.1	98,626	49.7
35	96,853	41.7	98,838	46.7	96,677	43.6	98,325	46.7	95,752	41.0	98,014	45.7	97,240	42.6	98,446	46.4	96,505	41.5	98,278	44.9
40	96,029	37.0	98,574	41.8	96,012	38.9	97,813	41.9	94,227	36.6	97,264	41.0	96,641	37.8	97,996	41.6	95,525	36.9	97,617	40.2
45	94,850	32.4	97,887	37.1	94,809	34.4	97,171	37.2	91,948	32.5	96,362	36.4	95,579	33.2	97,415	36.8	93,873	32.5	96,947	35.5
50	93,059	28.0	96,809	32.5	93,607	29.8	96,147	32.6	90,218	28.0	94,617	32.0	93,871	28.8	96,360	32.2	92,252	28.0	95,693	30.9
55	90,375	23.8	95,026	28.0	91,438	25.4	94,295	28.2	87,011	24.0	92,792	27.6	91,626	24.4	94,967	27.6	89,538	23.8	93,392	26.6
60	87,277	19.5	92,680	23.7	87,917	21.4	92,131	23.8	82,404	20.2	89,401	23.5	87,644	20.4	92,570	23.3	85,352	19.8	90,692	22.3
65	80,767	15.9	89,084	19.5	83,322	17.4	88,701	19.6	76,015	16.7	85,579	19.5	82,486	16.5	88,578	19.2	80,285	15.9	85,694	18.5
70	73,484	12.2	85,366	15.3	76,086	13.8	83,333	15.7	67,602	13.4	79,113	15.9	74,842	13.0	83,196	15.3	71,169	12.7	78,141	15.0
75	59,780	9.5	77,577	11.6	66,052	10.5	75,167	12.1	55,831	10.7	70,745	12.4	63,686	9.8	73,262	12.0	59,887	9.6	69,153	11.6
80	43,029	7.2	62,256	8.8	51,412	7.8	63,351	8.9	42,638	8.3	58,738	9.5	48,352	7.1	59,491	9.2	43,791	7.2	55,311	8.9
85	26,700	5.1	44,299	6.3	32,210	6.0	44,783	6.6	25,972	7.0	43,125	7.0	29,789	5.0	41,784	7.1	26,774	5.1	38,090	6.8

Table 5 (continued)

Age x	East Dunbartonshire				East Glasgow ²				East Lothian				East Renfrewshire ²				Edinburgh			
	Males		Females		Males		Females		Males		Females		Males		Females		Males		Females	
	l_x	e_x^o	l_x	e_x^o	l_x	e_x^o	l_x	e_x^o	l_x	e_x^o	l_x	e_x^o	l_x	e_x^o	l_x	e_x^o	l_x	e_x^o	l_x	e_x^o
0	100,000	78.3	100,000	83.1	100,000	70.1	100,000	77.3	100,000	76.7	100,000	81.2	100,000	77.8	100,000	82.0	100,000	76.8	100,000	81.5
1	99,727	77.5	99,706	82.3	99,550	69.5	99,469	76.7	99,606	76.0	99,638	80.5	99,350	77.3	99,456	81.4	99,478	76.2	99,642	80.8
5	99,727	73.5	99,639	78.4	99,404	65.6	99,417	72.8	99,606	72.0	99,397	76.7	99,284	73.4	99,389	77.5	99,407	72.3	99,505	76.9
10	99,727	68.5	99,580	73.4	99,349	60.6	99,417	67.8	99,546	67.0	99,276	71.8	99,284	68.4	99,263	72.6	99,392	67.3	99,489	71.9
15	99,680	63.5	99,529	68.4	99,256	55.6	99,417	62.8	99,494	62.1	99,276	66.8	99,233	63.4	99,155	67.7	99,333	62.4	99,473	66.9
20	99,418	58.7	99,429	63.5	98,724	50.9	99,246	57.9	99,181	57.3	99,222	61.8	99,078	58.5	98,984	62.8	99,072	57.5	99,376	62.0
25	98,972	54.0	99,429	58.5	98,128	46.2	99,055	53.0	98,366	52.7	99,222	56.8	98,843	53.7	98,916	57.8	98,747	52.7	99,242	57.1
30	98,370	49.3	99,285	53.6	97,712	41.4	98,677	48.2	97,596	48.1	99,057	51.9	98,208	49.0	98,738	52.9	98,405	47.9	99,116	52.1
35	97,538	44.7	99,211	48.6	96,388	36.9	97,905	43.5	96,916	43.4	98,801	47.0	97,307	44.4	98,243	48.2	98,000	43.1	98,923	47.2
40	96,917	39.9	98,968	43.7	94,643	32.6	96,608	39.1	96,473	38.6	98,493	42.2	96,391	39.8	97,918	43.3	97,088	38.4	98,472	42.4
45	96,050	35.3	98,444	39.0	91,965	28.5	95,631	34.4	95,468	34.0	97,947	37.4	95,756	35.1	97,464	38.5	95,917	33.9	97,705	37.7
50	94,750	30.7	97,749	34.2	89,449	24.2	94,196	29.9	94,176	29.4	97,201	32.7	95,191	30.3	96,892	33.7	94,077	29.5	96,577	33.2
55	92,736	26.3	96,558	29.6	84,969	20.3	91,646	25.7	92,126	25.0	95,934	28.1	93,184	25.8	95,531	29.2	91,810	25.2	94,835	28.7
60	89,850	22.1	94,845	25.1	78,906	16.7	87,675	21.7	88,338	21.0	93,961	23.6	90,561	21.5	93,977	24.6	88,066	21.1	92,675	24.3
65	84,766	18.3	91,546	20.9	68,943	13.7	82,531	17.9	83,753	17.0	90,556	19.4	85,976	17.5	90,776	20.4	82,068	17.5	89,053	20.2
70	78,504	14.5	87,328	16.8	57,176	11.1	74,669	14.6	77,116	13.3	84,975	15.5	80,081	13.6	85,288	16.5	74,229	14.1	83,740	16.3
75	68,624	11.3	79,446	13.2	43,235	8.8	63,777	11.6	65,151	10.2	76,578	11.9	69,226	10.4	78,303	12.8	63,452	11.0	76,116	12.7
80	55,192	8.4	68,177	10.0	27,610	7.4	51,098	8.9	50,385	7.5	62,805	9.0	55,214	7.4	66,591	9.6	49,324	8.5	64,363	9.6
85	36,987	6.3	50,483	7.6	15,620	6.2	35,547	6.7	31,885	5.4	45,562	6.5	34,667	5.3	49,633	7.0	31,698	6.8	47,416	7.1
Age x	Falkirk				Glenrothes & North East Fife				Inverclyde ²				Kirkcaldy & Levenmouth				Mid Highland			
	Males		Females		Males		Females		Males		Females		Males		Females		Males		Females	
	l_x	e_x^o	l_x	e_x^o	l_x	e_x^o	l_x	e_x^o	l_x	e_x^o	l_x	e_x^o	l_x	e_x^o	l_x	e_x^o	l_x	e_x^o	l_x	e_x^o
0	100,000	75.9	100,000	79.8	100,000	77.3	100,000	81.2	100,000	73.1	100,000	79.0	100,000	74.7	100,000	79.4	100,000	76.9	100,000	82.1
1	99,507	75.3	99,789	78.9	99,386	76.8	99,606	80.5	99,209	72.7	99,317	78.5	99,202	74.3	99,127	79.1	99,727	76.1	99,923	81.2
5	99,360	71.4	99,789	74.9	99,386	72.8	99,492	76.6	99,209	68.7	98,913	74.8	99,083	70.3	99,065	75.2	99,589	72.2	99,923	77.2
10	99,360	66.4	99,748	70.0	99,279	67.9	99,382	71.7	99,131	63.8	98,749	69.9	99,020	65.4	99,065	70.2	99,523	67.3	99,853	72.2
15	99,324	61.5	99,710	65.0	99,233	62.9	99,334	66.7	98,994	58.8	98,679	65.0	99,020	60.4	99,065	65.2	99,464	62.3	99,793	67.3
20	99,163	56.5	99,565	60.1	99,005	58.0	99,142	61.8	98,270	54.3	98,484	60.1	98,596	55.6	99,009	60.2	98,946	57.6	99,535	62.4
25	98,674	51.8	99,371	55.2	98,794	53.1	98,990	56.9	97,679	49.6	98,420	55.1	97,850	51.0	98,726	55.4	98,444	52.9	99,353	57.5
30	98,267	47.0	99,227	50.3	98,011	48.5	98,744	52.1	96,783	45.0	98,059	50.3	97,120	46.4	98,547	50.5	97,965	48.2	99,097	52.7
35	97,657	42.3	98,887	45.4	97,500	43.8	98,362	47.3	96,212	40.3	97,667	45.5	96,276	41.8	98,121	45.7	97,365	43.4	98,802	47.8
40	96,743	37.7	98,613	40.6	96,951	39.0	97,928	42.5	94,744	35.8	97,080	40.8	94,896	37.4	97,292	41.0	96,265	38.9	98,426	43.0
45	95,501	33.1	97,872	35.9	96,139	34.3	97,384	37.7	93,561	31.3	96,366	36.1	93,348	32.9	96,658	36.3	95,574	34.2	97,942	38.2
50	93,733	28.7	97,098	31.1	94,832	29.8	96,132	33.1	91,838	26.8	95,477	31.4	91,418	28.6	95,218	31.8	93,822	29.8	96,896	33.6
55	91,300	24.4	95,463	26.6	92,406	25.5	94,707	28.6	87,848	22.9	93,372	27.0	88,552	24.4	93,690	27.3	91,046	25.6	95,826	28.9
60	87,917	20.2	92,632	22.3	89,582	21.2	92,587	24.2	83,445	19.0	90,546	22.8	84,541	20.5	91,112	23.0	87,840	21.4	93,845	24.5
65	82,511	16.4	88,078	18.4	84,704	17.3	89,329	20.0	76,527	15.5	86,508	18.8	79,493	16.6	87,527	18.8	82,093	17.8	91,194	20.1
70	74,862	12.8	81,176	14.7	77,277	13.7	83,752	16.2	67,033	12.3	79,143	15.3	71,352	13.2	82,188	14.9	74,981	14.2	86,228	16.1
75	63,357	9.7	71,735	11.3	66,422	10.5	76,859	12.4	55,850	9.3	71,001	11.7	60,586	10.1	72,325	11.6	63,956	11.2	78,664	12.5
80	46,382	7.3	58,544	8.3	51,604	7.8	62,735	9.6	40,978	6.7	58,324	8.7	46,178	7.5	58,203	8.8	50,464	8.6	66,349	9.3
85	28,405	5.4	39,330	6.2	32,373	6.0	45,382	7.3	22,331	5.3	39,582	6.7	29,913	5.2	40,176	6.6	33,262	6.7	47,884	6.9

Table 5 (continued)

Age x	Midlothian				Moray ³				North Ayrshire				North Glasgow ²				North Highland			
	Males		Females		Males		Females		Males		Females		Males		Females		Males		Females	
	l_x	e_x^o	l_x	e_x^o	l_x	e_x^o	l_x	e_x^o	l_x	e_x^o	l_x	e_x^o	l_x	e_x^o	l_x	e_x^o	l_x	e_x^o	l_x	e_x^o
0	100,000	76.6	100,000	81.3	100,000	76.7	100,000	80.9	100,000	74.0	100,000	79.2	100,000	69.8	100,000	76.2	100,000	76.3	100,000	79.7
1	99,792	75.7	99,928	80.3	99,672	75.9	99,646	80.2	99,442	73.4	99,362	78.7	99,421	69.2	99,733	75.4	99,828	75.4	99,275	79.3
5	99,792	71.7	99,928	76.3	99,601	72.0	99,570	76.3	99,312	69.5	99,270	74.8	99,307	65.3	99,614	71.5	99,828	71.4	99,275	75.3
10	99,720	66.8	99,928	71.3	99,530	67.0	99,570	71.3	99,267	64.5	99,270	69.8	99,175	60.3	99,614	66.5	99,828	66.4	99,275	70.3
15	99,720	61.8	99,928	66.3	99,530	62.0	99,570	66.3	99,189	59.6	99,270	64.8	99,049	55.4	99,614	61.5	99,690	61.5	99,126	65.4
20	99,600	56.8	99,864	61.4	99,205	57.2	99,132	61.6	98,729	54.8	99,231	59.8	98,686	50.6	99,568	56.5	98,895	56.9	98,819	60.6
25	99,263	52.0	99,651	56.5	98,611	52.6	98,811	56.7	98,050	50.2	99,066	54.9	98,388	45.8	99,296	51.7	98,382	52.2	98,600	55.7
30	98,143	47.6	99,335	51.7	97,767	48.0	98,537	51.9	97,097	45.7	98,793	50.0	97,768	41.0	98,950	46.8	97,604	47.6	98,600	50.7
35	97,529	42.9	99,113	46.8	96,865	43.4	98,234	47.1	95,977	41.2	98,300	45.3	96,241	36.6	98,224	42.1	97,046	42.9	98,008	46.0
40	96,853	38.2	98,840	41.9	96,181	38.7	97,916	42.2	94,821	36.6	97,827	40.5	94,646	32.2	97,543	37.4	96,321	38.2	97,595	41.2
45	95,915	33.5	98,128	37.2	95,383	34.0	97,349	37.4	93,386	32.2	97,020	35.8	92,035	28.1	96,086	33.0	95,509	33.5	97,044	36.4
50	94,554	28.9	97,406	32.4	93,871	29.5	96,412	32.8	91,320	27.8	95,711	31.2	88,578	24.1	94,247	28.6	93,656	29.1	95,783	31.9
55	91,930	24.7	95,617	28.0	91,500	25.2	95,009	28.2	88,802	23.6	93,798	26.8	83,550	20.4	91,196	24.4	91,415	24.8	94,302	27.3
60	88,291	20.6	94,377	23.3	87,997	21.1	92,181	24.0	84,565	19.6	91,280	22.5	77,504	16.8	86,967	20.5	88,117	20.6	91,624	23.0
65	83,790	16.6	90,849	19.2	83,515	17.1	89,432	19.7	78,473	15.9	86,898	18.5	69,176	13.5	82,099	16.6	83,420	16.6	88,247	18.8
70	76,334	13.0	86,013	15.1	75,836	13.6	84,844	15.6	69,712	12.6	80,356	14.8	56,287	11.0	72,511	13.4	75,582	13.1	83,518	14.8
75	64,954	9.8	77,236	11.5	65,317	10.4	76,305	12.1	58,242	9.6	71,133	11.4	42,616	8.7	60,844	10.5	61,889	10.4	73,893	11.3
80	48,451	7.3	63,328	8.5	50,535	7.7	63,768	8.9	43,191	7.1	57,293	8.6	28,993	6.6	47,105	7.8	46,177	8.1	60,467	8.3
85	28,490	5.6	45,259	5.9	31,173	5.9	46,901	6.3	25,954	5.1	40,500	6.1	14,966	5.5	30,562	5.7	30,134	6.1	41,864	5.9
Age x	North Lanarkshire				Orkney				Perth & Kinross				Renfrewshire				Scottish Borders ⁵			
	Males		Females		Males		Females		Males		Females		Males		Females		Males		Females	
	l_x	e_x^o	l_x	e_x^o	l_x	e_x^o	l_x	e_x^o	l_x	e_x^o	l_x	e_x^o	l_x	e_x^o	l_x	e_x^o	l_x	e_x^o	l_x	e_x^o
0	100,000	73.7	100,000	78.5	100,000	75.5	100,000	81.7	100,000	78.2	100,000	81.8	100,000	73.7	100,000	79.2	100,000	77.1	100,000	81.2
1	99,545	73.1	99,733	77.7	99,392	75.0	100,000	80.7	99,641	77.4	99,569	81.2	99,292	73.2	99,751	78.4	99,824	76.3	99,722	80.4
5	99,480	69.1	99,646	73.8	99,392	71.0	99,660	77.0	99,549	73.5	99,521	77.2	99,223	69.3	99,751	74.4	99,714	72.4	99,606	76.5
10	99,462	64.1	99,611	68.8	99,392	66.0	99,660	72.0	99,549	68.5	99,521	72.2	99,223	64.3	99,715	69.4	99,660	67.4	99,606	71.5
15	99,430	59.2	99,543	63.9	99,140	61.2	99,660	67.0	99,395	63.6	99,521	67.2	99,158	59.3	99,680	64.5	99,514	62.5	99,505	66.5
20	99,082	54.4	99,414	59.0	98,884	56.3	99,660	62.0	99,107	58.8	99,234	62.4	98,829	54.5	99,554	59.5	99,029	57.8	99,304	61.7
25	98,621	49.6	99,257	54.1	97,534	52.1	99,660	57.0	98,901	53.9	99,115	57.5	98,055	49.9	99,275	54.7	98,278	53.2	99,045	56.8
30	98,020	44.9	98,952	49.2	97,534	47.1	99,660	52.0	98,302	49.2	98,973	52.5	96,992	45.4	99,051	49.8	97,285	48.7	98,901	51.9
35	96,972	40.3	98,613	44.4	96,466	42.6	99,660	47.0	97,779	44.5	98,732	47.7	95,891	40.9	98,633	45.0	96,694	44.0	98,598	47.1
40	95,729	35.8	98,091	39.6	95,431	38.0	99,169	42.2	97,006	39.8	97,993	43.0	94,524	36.5	98,273	40.2	95,993	39.3	97,976	42.3
45	94,263	31.4	97,227	34.9	94,282	33.4	98,345	37.5	95,771	35.3	97,624	38.1	93,251	31.9	97,344	35.5	95,244	34.6	97,346	37.6
50	91,995	27.1	95,927	30.4	93,304	28.7	98,132	32.6	94,456	30.7	96,767	33.5	91,303	27.5	96,317	30.9	94,150	30.0	96,642	32.9
55	88,825	22.9	93,729	26.0	91,208	24.3	97,266	27.9	92,873	26.2	95,371	28.9	88,383	23.4	94,469	26.4	92,457	25.5	95,084	28.4
60	84,458	19.0	90,481	21.9	86,971	20.4	95,483	23.4	89,895	22.0	93,527	24.4	84,531	19.3	91,360	22.2	89,178	21.3	93,248	23.9
65	78,047	15.4	85,688	17.9	82,251	16.4	91,080	19.4	85,439	18.0	90,655	20.1	78,234	15.7	86,994	18.2	84,784	17.3	90,460	19.5
70	68,583	12.1	78,561	14.3	73,789	13.0	84,676	15.6	79,508	14.2	86,000	16.1	68,385	12.6	79,853	14.6	78,332	13.5	85,822	15.4
75	55,085	9.5	68,561	11.1	61,862	10.1	77,579	11.8	69,036	11.0	77,675	12.5	56,123	9.8	70,965	11.2	66,992	10.4	78,148	11.7
80	39,683	7.2	54,513	8.3	48,115	7.2	65,429	8.6	56,123	7.9	65,911	9.3	40,206	7.7	56,576	8.4	52,183	7.6	64,929	8.6
85	23,277	5.5	36,480	6.1	29,024	5.3	45,126	6.3	36,493	5.8	49,064	6.7	25,154	5.8	38,746	6.1	33,074	5.6	46,107	6.1

Table 5 (continued)

Age x	Shetland				South Ayrshire				South East Glasgow ²				South East Highland				South Lanarkshire			
	Males		Females		Males		Females		Males		Females		Males		Females		Males		Females	
	l_x	e_x^o	l_x	e_x^o	l_x	e_x^o	l_x	e_x^o	l_x	e_x^o	l_x	e_x^o	l_x	e_x^o	l_x	e_x^o	l_x	e_x^o	l_x	e_x^o
0	100,000	76.2	100,000	81.8	100,000	75.9	100,000	80.9	100,000	72.5	100,000	78.9	100,000	75.9	100,000	81.1	100,000	74.9	100,000	79.9
1	99,240	75.8	98,435	82.1	99,339	75.4	99,745	80.1	99,542	71.8	99,755	78.1	99,649	75.2	99,618	80.4	99,723	74.1	99,715	79.2
5	99,240	71.8	98,435	78.1	99,277	71.4	99,619	76.2	99,381	67.9	99,582	74.2	99,459	71.3	99,550	76.4	99,609	70.1	99,677	75.2
10	98,736	67.1	98,435	73.1	99,162	66.5	99,619	71.2	99,317	63.0	99,582	69.2	99,200	66.5	99,550	71.4	99,493	65.2	99,618	70.2
15	98,736	62.1	98,435	68.1	99,109	61.5	99,407	66.4	99,317	58.0	99,582	64.2	99,139	61.5	99,550	66.4	99,371	60.3	99,509	65.3
20	97,874	57.6	97,480	63.8	98,638	56.8	99,257	61.5	99,204	53.0	99,335	59.4	98,532	56.9	99,550	61.4	99,145	55.4	99,439	60.3
25	97,075	53.1	97,480	58.8	98,040	52.1	99,096	56.5	98,766	48.3	99,209	54.5	97,778	52.3	99,258	56.6	98,748	50.6	99,351	55.4
30	96,807	48.2	97,176	54.0	97,499	47.4	99,033	51.6	98,130	43.6	98,983	49.6	97,174	47.6	98,956	51.8	98,122	45.9	99,078	50.5
35	96,078	43.6	97,176	49.0	96,300	43.0	98,599	46.8	97,414	38.9	98,690	44.7	96,057	43.2	98,527	47.0	97,031	41.4	98,787	45.7
40	94,200	39.4	96,763	44.2	95,384	38.4	98,196	42.0	96,162	34.3	98,334	39.9	95,057	38.6	98,085	42.2	96,030	36.8	98,420	40.8
45	92,766	35.0	96,567	39.2	94,176	33.8	97,702	37.2	94,441	29.9	97,049	35.4	93,734	34.1	97,340	37.5	94,748	32.3	97,693	36.1
50	91,177	30.5	96,186	34.4	92,549	29.4	96,475	32.6	91,825	25.7	95,554	30.9	92,251	29.6	96,382	32.8	92,924	27.9	96,462	31.6
55	88,448	26.4	94,338	30.0	89,963	25.1	94,849	28.1	88,167	21.6	93,819	26.4	89,997	25.3	94,747	28.3	90,456	23.6	95,007	27.0
60	86,831	21.8	93,910	25.1	86,468	21.1	92,577	23.8	82,804	17.9	89,937	22.4	85,992	21.3	92,020	24.1	86,224	19.6	92,165	22.8
65	81,882	18.0	91,587	20.7	81,402	17.2	89,099	19.6	74,070	14.7	85,785	18.4	81,186	17.5	88,499	20.0	80,327	15.9	87,841	18.8
70	76,127	14.2	88,408	16.4	73,409	13.8	83,527	15.7	62,192	12.0	77,830	15.0	72,791	14.2	82,541	16.2	70,697	12.7	81,693	15.0
75	64,730	11.2	81,054	12.6	61,835	10.9	75,077	12.2	50,215	9.3	66,539	12.2	62,744	11.0	74,918	12.6	58,291	9.9	72,485	11.6
80	51,338	8.5	69,738	9.3	48,243	8.3	62,097	9.3	34,475	7.4	54,155	9.4	49,578	8.3	63,052	9.5	43,522	7.4	59,624	8.5
85	34,677	6.4	52,922	6.4	31,575	6.4	45,172	6.8	21,102	5.5	38,977	7.0	32,765	6.3	45,542	7.2	26,390	5.5	41,152	6.2
Age x	South West Glasgow ²				Stirling				West Dunbartonshire ²				West Glasgow ²				West Lothian ²			
	Males		Females		Males		Females		Males		Females		Males		Females		Males		Females	
	l_x	e_x^o	l_x	e_x^o	l_x	e_x^o	l_x	e_x^o	l_x	e_x^o	l_x	e_x^o	l_x	e_x^o	l_x	e_x^o	l_x	e_x^o	l_x	e_x^o
0	100,000	71.2	100,000	77.6	100,000	77.3	100,000	81.8	100,000	72.5	100,000	78.4	100,000	72.0	100,000	77.5	100,000	75.9	100,000	79.7
1	99,517	70.5	99,425	77.0	99,411	76.8	99,694	81.1	99,700	71.7	99,757	77.6	99,061	71.7	99,210	77.1	99,578	75.3	99,676	79.0
5	99,333	66.6	99,328	73.1	99,411	72.8	99,694	77.1	99,637	67.7	99,689	73.7	98,962	67.8	99,110	73.2	99,460	71.4	99,645	75.0
10	99,333	61.6	99,328	68.1	99,346	67.8	99,625	72.1	99,567	62.8	99,548	68.8	98,850	62.9	99,052	68.2	99,397	66.4	99,549	70.1
15	99,236	56.7	99,277	63.1	99,346	62.8	99,564	67.2	99,507	57.8	99,354	63.9	98,795	57.9	98,993	63.2	99,337	61.4	99,549	65.1
20	98,819	51.9	99,047	58.3	98,958	58.0	99,422	62.3	99,241	53.0	99,071	59.1	98,678	53.0	98,919	58.3	98,988	56.6	99,363	60.2
25	98,203	47.2	98,828	53.4	98,371	53.4	99,422	57.3	98,588	48.3	98,702	54.3	98,406	48.1	98,828	53.3	98,583	51.9	99,135	55.3
30	97,468	42.6	98,759	48.4	97,985	48.6	99,422	52.3	97,586	43.8	98,417	49.5	97,902	43.3	98,688	48.4	97,777	47.3	99,070	50.4
35	96,490	38.0	98,236	43.7	97,241	43.9	99,055	47.4	96,355	39.3	98,106	44.6	97,206	38.6	98,198	43.6	97,109	42.6	98,887	45.5
40	94,762	33.6	97,361	39.0	96,641	39.2	98,707	42.6	94,951	34.9	97,254	40.0	96,004	34.1	97,493	38.9	96,243	37.9	98,542	40.6
45	92,705	29.3	96,387	34.4	95,605	34.6	98,127	37.8	92,968	30.5	96,367	35.3	93,775	29.8	96,487	34.3	95,463	33.2	98,007	35.8
50	90,341	25.0	95,263	29.8	94,438	30.0	97,360	33.1	90,507	26.3	95,333	30.7	90,904	25.7	94,951	29.8	94,418	28.6	96,961	31.2
55	87,463	20.7	93,377	25.3	92,492	25.6	95,707	28.6	86,505	22.4	93,389	26.3	86,835	21.8	92,902	25.4	92,083	24.2	94,925	26.8
60	82,419	16.9	90,189	21.1	88,891	21.5	93,713	24.2	81,559	18.6	91,053	21.9	81,996	17.9	89,265	21.4	88,705	20.1	92,263	22.5
65	74,871	13.3	84,846	17.3	83,759	17.7	91,053	19.8	73,714	15.3	86,514	17.9	73,712	14.6	82,892	17.8	83,020	16.3	87,386	18.6
70	60,413	10.9	75,514	14.1	77,452	13.9	85,134	16.0	64,372	12.2	78,967	14.4	62,706	11.8	74,951	14.4	73,790	13.0	81,604	14.7
75	46,419	8.4	64,878	11.0	67,461	10.6	78,528	12.2	51,902	9.5	69,325	11.0	50,354	9.0	65,317	11.2	62,573	9.9	72,802	11.2
80	30,671	6.5	51,030	8.4	52,772	7.8	66,652	8.9	39,089	6.8	55,222	8.2	34,127	7.2	51,876	8.5	46,446	7.4	57,417	8.6
85	17,327	4.5	34,466	6.2	34,622	5.6	47,055	6.6	22,067	5.1	36,987	6.0	19,894	5.5	36,282	6.0	28,555	5.5	38,351	6.6

Table 5 (continued)

Age x	Western Isles ³			
	Males		Females	
	l_x	e_x^o	l_x	e_x^o
0	100,000	73.5	100,000	82.0
1	99,525	72.8	100,000	81.0
5	99,525	68.8	100,000	77.0
10	99,277	64.0	100,000	72.0
15	99,062	59.1	100,000	67.0
20	98,275	54.6	99,766	62.1
25	97,500	50.0	99,414	57.3
30	96,901	45.3	99,120	52.5
35	95,914	40.7	98,877	47.6
40	94,988	36.1	98,498	42.8
45	93,715	31.6	98,169	37.9
50	92,344	27.0	96,498	33.5
55	89,685	22.7	95,463	28.9
60	84,461	19.0	92,949	24.6
65	76,462	15.7	89,225	20.5
70	67,515	12.5	84,504	16.5
75	55,772	9.6	78,105	12.7
80	38,892	7.6	67,859	9.2
85	24,620	5.6	50,419	6.5

Note: This abridged life table is constructed from the estimated population in 2007, 2008 and 2009 and the total number of deaths registered in these years. The column headed l_x shows the numbers who would survive to the exact age of x , out of 100,000 persons who, from birth, were subject to the mortality probabilities indicated by the death records for 2007-2009. Column e_x^o shows the expectation of life, that is, the average number of years of life left to persons aged exactly x who are subject to the 2007-2009 mortality probabilities from age x onwards.

¹ Please note that the Scotland-level life expectancy estimate shown here is for use only as a comparator for the corresponding sub-Scotland-level figures. The definitive Scotland-level life expectancy estimate (based on interim life tables) is published by the Office for National Statistics: [National Statistics Online - Interim Life tables](#)

² Known as a Community Health and Care Partnership.

³ Known as a Community Health and Social Care Partnership.

Table 6: Life expectancy at birth by Urban Rural classification, 2007-2009, with 95 per cent upper and lower confidence intervals (males and females)

	Males			Females		
	Expectation of	Lower 95% CI	Upper 95% CI	Expectation of	Lower 95% CI	Upper 95% CI
	life at birth			life at birth		
	Years	Years	Years	Years	Years	Years
Scotland¹	75.4	75.3	75.5	80.1	80.1	80.2
2010 Urban/Rural classification						
Large Urban Areas	74.0	73.9	74.2	79.5	79.4	79.6
Other Urban Areas	75.2	75.1	75.4	79.9	79.8	80.1
Accessible Small Towns	76.4	76.0	76.7	80.5	80.2	80.8
Remote Small Towns	74.7	74.2	75.2	80.0	79.5	80.5
Accessible Rural	77.9	77.6	78.1	81.5	81.2	81.7
Remote Rural	77.6	77.2	78.0	81.8	81.5	82.2

¹ Please note that the Scotland-level life expectancy estimate shown here is for use only as a comparator for the corresponding sub-Scotland-level figures. The definitive Scotland-level life expectancy estimate (based on interim life tables) is published by the Office for National Statistics:

[National Statistics Online - Interim Life tables](#)

Table 7: Life expectancy at birth by SIMD 2009 Quintile, Decile and Vigintile, 2007-2009, with 95 per cent upper and lower confidence intervals (males and females)

	Males			Females		
	Expectation of	Lower 95% CI	Upper 95% CI	Expectation of	Lower 95% CI	Upper 95% CI
	life at birth			life at birth		
	Years	Years	Years	Years	Years	Years
Scotland¹	75.4	75.3	75.5	80.1	80.1	80.2
Quintile						
1	69.3	69.1	69.6	76.5	76.2	76.7
2	73.3	73.1	73.6	78.8	78.6	79.0
3	75.9	75.7	76.1	80.3	80.1	80.5
4	78.3	78.0	78.5	81.8	81.6	82.0
5	80.5	80.3	80.7	83.8	83.6	83.9
Decile						
1	67.7	67.3	68.0	75.4	75.0	75.7
2	71.0	70.7	71.4	77.5	77.2	77.8
3	72.4	72.1	72.7	78.4	78.1	78.7
4	74.3	74.0	74.6	79.2	78.9	79.5
5	75.3	75.0	75.6	79.9	79.7	80.2
6	76.5	76.2	76.8	80.6	80.4	80.9
7	77.7	77.4	78.0	81.6	81.3	81.9
8	78.8	78.5	79.1	82.0	81.8	82.3
9	80.0	79.7	80.2	83.1	82.9	83.4
10	81.1	80.9	81.4	84.4	84.2	84.7
Vigintile						
1	66.1	65.7	66.6	74.6	74.1	75.0
2	69.3	68.8	69.8	76.1	75.7	76.6
3	70.3	69.9	70.8	77.5	77.1	77.9
4	71.7	71.3	72.2	77.6	77.1	78.0
5	72.4	72.0	72.9	78.1	77.7	78.5
6	72.4	71.9	72.8	78.7	78.3	79.1
7	73.9	73.5	74.4	78.9	78.5	79.3
8	74.7	74.3	75.1	79.4	79.0	79.9
9	74.9	74.5	75.4	79.4	79.0	79.8
10	75.7	75.2	76.1	80.5	80.1	80.9
11	75.9	75.5	76.4	80.7	80.3	81.0
12	77.1	76.7	77.6	80.6	80.2	81.0
13	77.8	77.4	78.2	81.5	81.1	81.8
14	77.6	77.2	78.1	81.8	81.4	82.2
15	78.4	78.0	78.8	81.8	81.4	82.1
16	79.3	78.9	79.7	82.3	81.9	82.6
17	80.0	79.6	80.3	83.0	82.6	83.3
18	80.0	79.6	80.4	83.3	82.9	83.6
19	80.5	80.1	80.9	84.0	83.6	84.3
20	81.8	81.4	82.2	84.9	84.5	85.3

¹ Please note that the Scotland-level life expectancy estimate shown here is for use only as a comparator for the corresponding sub-Scotland-level figures. The definitive Scotland-level life expectancy estimate (based on interim life tables) is published by the Office for National Statistics:

[National Statistics Online - Interim Life tables](#)

Table 8: Life expectancy at birth by Community Health Partnership, 2007-2009, with 95 per cent upper and lower confidence intervals (males and females)

	Males			Females		
	Expectation of life at birth	Lower 95% CI	Upper 95% CI	Expectation of life at birth	Lower 95% CI	Upper 95% CI
	Years	Years	Years	Years	Years	Years
Scotland¹	75.4	75.3	75.5	80.1	80.1	80.2
Community Health Partnership						
Aberdeen City	75.7	75.3	76.2	80.6	80.2	81.0
Aberdeenshire	78.0	77.5	78.4	81.4	81.0	81.8
Angus	76.9	76.2	77.6	80.6	80.0	81.2
Argyll & Bute	76.5	75.8	77.3	80.4	79.7	81.1
Clackmannanshire	75.0	74.0	75.9	80.9	80.1	81.8
Dumfries & Galloway	76.8	76.2	77.4	80.6	80.1	81.2
Dundee	73.7	73.1	74.4	79.4	78.8	80.0
Dunfermline & West Fife	76.0	75.5	76.6	80.4	79.8	80.9
East Ayrshire	74.6	73.9	75.2	78.8	78.1	79.4
East Dunbartonshire	78.3	77.6	79.0	83.1	82.5	83.6
East Glasgow ²	70.1	69.5	70.8	77.3	76.7	77.9
East Lothian	76.7	76.0	77.4	81.2	80.6	81.8
East Renfrewshire ²	77.8	77.1	78.6	82.0	81.3	82.7
Edinburgh	76.8	76.5	77.2	81.5	81.2	81.8
Falkirk	75.9	75.4	76.5	79.8	79.3	80.3
Glenrothes & North East Fife	77.3	76.7	77.9	81.2	80.6	81.8
Inverclyde ²	73.1	72.3	74.0	79.0	78.2	79.8
Kirkcaldy & Levenmouth	74.7	73.9	75.4	79.4	78.7	80.1
Mid Highland	76.9	76.2	77.7	82.1	81.5	82.7
Midlothian	76.6	75.8	77.3	81.3	80.7	81.9
Moray ³	76.7	75.9	77.4	80.9	80.2	81.6
North Ayrshire	74.0	73.3	74.6	79.2	78.6	79.7
North Glasgow ²	69.8	69.1	70.5	76.2	75.5	76.8
North Highland	76.3	75.2	77.4	79.7	78.6	80.8
North Lanarkshire	73.7	73.4	74.1	78.5	78.2	78.9
Orkney	75.5	73.9	77.2	81.7	80.5	82.9
Perth & Kinross	78.2	77.6	78.7	81.8	81.3	82.3
Renfrewshire	73.7	73.1	74.3	79.2	78.7	79.7
Scottish Borders ²	77.1	76.5	77.8	81.2	80.6	81.7
Shetland	76.2	74.5	77.9	81.8	80.2	83.4
South Ayrshire	75.9	75.1	76.6	80.9	80.3	81.5
South East Glasgow ²	72.5	71.8	73.2	78.9	78.2	79.6
South East Highland	75.9	75.1	76.7	81.1	80.4	81.7
South Lanarkshire	74.9	74.5	75.2	79.9	79.6	80.3
South West Glasgow ²	71.2	70.5	71.8	77.6	77.0	78.2
Stirling	77.3	76.5	78.1	81.8	81.2	82.5
West Dunbartonshire ²	72.5	71.7	73.2	78.4	77.8	79.1
West Glasgow ²	72.0	71.4	72.7	77.5	76.8	78.1
West Lothian ²	75.9	75.4	76.5	79.7	79.2	80.2
Western Isles ³	73.5	72.1	74.9	82.0	80.8	83.1

¹ Please note that the Scotland-level life expectancy estimate shown here is for use only as a comparator for the corresponding sub-Scotland-level figures. The definitive Scotland-level life expectancy estimate (based on interim life tables) is published by the Office for National Statistics: [National Statistics Online - Interim Life tables](#)

² Known as a Community Health and Care Partnership.

³ Known as a Community Health and Social Care Partnership.

Table 9: Life expectancy at birth by Community Health Partnership, 2007-2009 and comparisons with 1997-1999 (males)

	1997-1999 Years	2007-2009 Years	1997-1999 Rank	2007-2009 Rank	Difference in years	% change
Scotland¹	72.7	75.4	.	.	2.7	3.8%
Community Health Partnership						
Aberdeen City	73.7	75.7	14	23	2.0	2.8%
Aberdeenshire	75.0	78.0	4	3	2.9	3.9%
Angus	75.0	76.9	5	9	1.9	2.5%
Argyll & Bute	72.8	76.5	21	15	3.8	5.2%
Clackmannanshire	72.7	75.0	22	25	2.3	3.1%
Dumfries & Galloway	74.3	76.8	10	11	2.5	3.3%
Dundee	71.7	73.7	30	31	2.0	2.8%
Dunfermline & West Fife	73.5	76.0	17	18	2.5	3.5%
East Ayrshire	72.7	74.6	23	28	1.9	2.6%
East Dunbartonshire	75.8	78.3	2	1	2.5	3.3%
East Glasgow ²	67.7	70.1	39	39	2.5	3.6%
East Lothian	74.3	76.7	11	12	2.4	3.3%
East Renfrewshire ²	76.4	77.8	1	4	1.5	1.9%
Edinburgh	73.6	76.8	15	10	3.2	4.3%
Falkirk	73.1	75.9	19	20	2.9	3.9%
Glenrothes & North East Fife	75.2	77.3	3	6	2.1	2.8%
Inverclyde ²	69.7	73.1	36	34	3.4	4.9%
Kirkcaldy & Levenmouth	72.4	74.7	28	27	2.3	3.2%
Mid Highland	72.4	76.9	26	8	4.5	6.2%
Midlothian	73.5	76.6	16	14	3.0	4.1%
Moray ³	74.7	76.7	8	13	2.0	2.7%
North Ayrshire	72.5	74.0	25	29	1.5	2.1%
North Glasgow ²	67.1	69.8	40	40	2.7	4.0%
North Highland	72.4	76.3	27	16	3.9	5.4%
North Lanarkshire	71.4	73.7	31	30	2.3	3.2%
Orkney	73.4	75.5	18	24	2.1	2.8%
Perth & Kinross	74.8	78.2	7	2	3.4	4.5%
Renfrewshire	71.0	73.7	32	32	2.7	3.8%
Scottish Borders ²	74.9	77.1	6	7	2.2	2.9%
Shetland	72.9	76.2	20	17	3.3	4.5%
South Ayrshire	73.8	75.9	13	22	2.1	2.8%
South East Glasgow ²	70.5	72.5	34	36	2.0	2.8%
South East Highland	73.9	75.9	12	21	2.1	2.8%
South Lanarkshire	72.5	74.9	24	26	2.3	3.2%
South West Glasgow ²	68.6	71.2	38	38	2.5	3.7%
Stirling	74.4	77.3	9	5	2.9	3.9%
West Dunbartonshire ²	69.8	72.5	35	35	2.7	3.8%
West Glasgow ²	68.8	72.0	37	37	3.2	4.7%
West Lothian ²	72.1	75.9	29	19	3.9	5.4%
Western Isles ³	70.9	73.5	33	33	2.6	3.6%

¹ Please note that the Scotland-level life expectancy estimate shown here is for use only as a comparator for the corresponding sub-Scotland-level figures. The definitive Scotland-level life expectancy estimate (based on interim life tables) is published by the Office for National Statistics:

[National Statistics Online - Interim Life tables](#)

² Known as a Community Health and Care Partnership.

³ Known as a Community Health and Social Care Partnership.

Table 10: Life expectancy at birth by Community Health Partnership, 2007-2009 and comparisons with 1997-1999 (females)

	1997-1999	2007-2009	1997-1999	2007-2009	Difference	%
	Years	Years	Rank	Rank	in years	change
Scotland¹	78.2	80.1	.	.	2.0	2.5%
Community Health Partnership						
Aberdeen City	79.3	80.6	13	20	1.3	1.7%
Aberdeenshire	80.0	81.4	3	10	1.4	1.8%
Angus	78.7	80.6	21	21	1.9	2.4%
Argyll & Bute	78.8	80.4	20	22	1.6	2.1%
Clackmannanshire	79.0	80.9	18	16	1.9	2.5%
Dumfries & Galloway	79.1	80.6	17	19	1.5	2.0%
Dundee	77.7	79.4	28	29	1.7	2.2%
Dunfermline & West Fife	79.1	80.4	16	23	1.3	1.6%
East Ayrshire	76.9	78.8	33	34	1.9	2.5%
East Dunbartonshire	79.5	83.1	7	1	3.6	4.5%
East Glasgow ²	74.7	77.3	39	39	2.6	3.5%
East Lothian	79.4	81.2	10	12	1.8	2.2%
East Renfrewshire ²	80.9	82.0	1	3	1.1	1.4%
Edinburgh	78.9	81.5	19	9	2.6	3.3%
Falkirk	78.3	79.8	25	25	1.5	1.9%
Glenrothes & North East Fife	80.1	81.2	2	13	1.1	1.4%
Inverclyde ²	77.7	79.0	30	32	1.3	1.7%
Kirkcaldy & Levenmouth	78.1	79.4	26	28	1.4	1.7%
Mid Highland	79.4	82.1	12	2	2.7	3.4%
Midlothian	78.6	81.3	23	11	2.7	3.4%
Moray ³	79.4	80.9	11	17	1.5	1.9%
North Ayrshire	77.8	79.2	27	31	1.4	1.7%
North Glasgow ²	74.5	76.2	40	40	1.6	2.2%
North Highland	78.4	79.7	24	27	1.3	1.7%
North Lanarkshire	77.0	78.5	32	35	1.5	2.0%
Orkney	79.5	81.7	6	8	2.2	2.7%
Perth & Kinross	79.5	81.8	9	7	2.3	2.9%
Renfrewshire	77.5	79.2	31	30	1.7	2.2%
Scottish Borders ²	79.6	81.2	5	14	1.6	2.0%
Shetland	79.8	81.8	4	5	2.0	2.5%
South Ayrshire	78.6	80.9	22	18	2.3	2.9%
South East Glasgow ²	76.4	78.9	36	33	2.5	3.3%
South East Highland	79.2	81.1	14	15	1.9	2.4%
South Lanarkshire	77.7	79.9	29	24	2.2	2.9%
South West Glasgow ²	75.7	77.6	38	37	1.9	2.5%
Stirling	79.2	81.8	15	6	2.7	3.4%
West Dunbartonshire ²	76.7	78.4	35	36	1.8	2.3%
West Glasgow ²	76.1	77.5	37	38	1.3	1.8%
West Lothian ²	76.8	79.7	34	26	2.9	3.8%
Western Isles ³	79.5	82.0	8	4	2.5	3.1%

¹ Please note that the Scotland-level life expectancy estimate shown here is for use only as a comparator for the corresponding sub-Scotland-level figures. The definitive Scotland-level life expectancy estimate (based on interim life tables) is published by the Office for National Statistics: [National Statistics Online - Interim Life tables](#)

² Known as a Community Health and Care Partnership.

³ Known as a Community Health and Social Care Partnership.

Notes on Statistical Publications

Enquiries

Enquiries about this publication should be addressed to:

Statistics Customer Services,
General Register Office for Scotland,
Ladywell House,
Edinburgh,
EH12 7TF.

Telephone: (0131) 314 4299

E-mail: customer@gro-scotland.gsi.gov.uk

General Register Office for Scotland

The General Register Office for Scotland (GROS) is the department of the devolved Scottish Administration responsible for the registration of births, marriages, civil partnerships, deaths, divorces and adoptions in Scotland. We are responsible for the Census of Population in Scotland which we use, with other sources of information, to produce population and household statistics. We make available important information for family history. The GROS website is <http://www.gro-scotland.gov.uk>. Our aim is to provide relevant and reliable information, analysis and advice that meet the needs of government, business and the people of Scotland.

Further detailed statistics produced by GROS are available from the Statistics Section on the GROS website (<http://www.gro-scotland.gov.uk/statistics/index.html>). Statistics from the 2001 Census are on Scotland's Census Results On-Line website (<http://www.scrol.gov.uk>) and on the Census section of the GROS website (<http://www.gro-scotland.gov.uk/census/index.html>).

Information about future publications is provided on the GROS website (<http://www.gro-scotland.gov.uk/futurepb.html>). If you would like to receive notification of forthcoming statistical publications, you can register your interest on the Scottish Government ScotStat website at <http://www.scotland.gov.uk/scotstat>.

Comments and complaints

If you are not satisfied with our service, please write to Kirsty MacLachlan, Head of Demography Division, General Register Office for Scotland, Room 1/2/7, Ladywell House, Ladywell Road, Edinburgh EH12 7TF. Telephone: (0131) 314 4242, E-mail: kirsty.maclachlan@gro-scotland.gsi.gov.uk.

We also welcome any comments or suggestions that would help us to improve our standards of service.

Related organisations

Organisation	Contact
<p>The Scottish Government (SG) forms the bulk of the devolved Scottish Administration. The aim of the statistical service in the SG is to provide relevant and reliable statistical information, analysis and advice that meets the needs of government, business and the people of Scotland.</p>	<p>Office of the Chief Statistician, Scottish Government, 1.N04, St Andrew's House, Edinburgh, EH1 3DG.</p> <p>Telephone: (0131) 244 0442</p> <p>E-mail: statistics.enquiries@scotland.gsi.gov.uk</p> <p>Website: http://www.scotland.gov.uk/Topics/Statistics</p>
<p>The Office for National Statistics (ONS) is responsible for producing a wide range of economic and social statistics. It also carries out the Census of Population for England and Wales.</p>	<p>Customer Contact Centre, Room 1.015, Office for National Statistics, Cardiff Road, Newport, NP10 8XG.</p> <p>Telephone: 0845 601 3034</p> <p>Minicom: 01633 812399</p> <p>E-mail: info@statistics.gsi.gov.uk</p> <p>Website: http://www.ons.gov.uk</p>
<p>The Northern Ireland Statistics and Research Agency (NISRA) is Northern Ireland's official statistics organisation. The Agency also has responsibility, in Northern Ireland, for the registration of births, marriages, adoptions and deaths and the Census of Population.</p>	<p>Northern Ireland Statistics and Research Agency, McAuley House, 2-14 Castle Street, Belfast, BT1 1SA.</p> <p>Telephone: 028 9034 8100</p> <p>Website: http://www.nisra.gov.uk</p>

© Crown Copyright. Brief extracts from the Crown Copyright material in this publication may be reproduced provided the source is fully acknowledged.