

REGISTRAR GENERAL FOR SCOTLAND



Population Projections Scotland (2002-based)

Population projections by sex, age and administrative area

CONTENTS

		<i>page</i>
1	Introduction	1
2	Methodology and assumptions	1
3	Results of the projections	3
4	Population comparisons with 2000-based projections	5
5	Notes, definitions and maps	6
6	Further information	9
Table 1	Projected population by council and health board area; 2002-2018	10
Table 2	Projected population, by sex and broad age group; council and health board areas; 2002-2018	12
Table 3	Projected percentage changes in population from base year, by broad age group; council and health board areas; 2008, 2013 and 2018	18
Table 4	Projected births by council and health board area; 2002-2018	20
Appendix A	Assumed fertility rates by age; mid-year to mid-year periods; Scotland; 2002-2018	22
Appendix B	Assumed mortality rates by sex, for selected ages and years; Scotland; 2002-2018	23
Appendix C	Fertility and mortality local scaling factors by council and health board area	24
Appendix D	Migration assumptions by council and health board area; 2002-2018	25
Appendix E	Uses and limitations of projections	26

Further information

Customer Services
Demography Branch
General Register Office for Scotland
Ladywell House
Ladywell Road
Edinburgh EH12 7TF

Tel: 0131 314 4254

Fax: 0131 314 4696

E-mail: customer@gro-scotland.gsi.gov.uk

Website: www.gro-scotland.gov.uk

A National Statistics Publication

National Statistics are produced to high professional standards set out in the National Statistics Code of Practice. They undergo regular quality assurance reviews to ensure that they meet customers needs. They are produced free from any political interference.

© Crown copyright 2004

1. INTRODUCTION

This paper summarises the Registrar General for Scotland's mid-2002 based population projections for the council and health board areas of Scotland. The projections are consistent with the mid-2002 based national population projections for Scotland prepared by the Government Actuary's Department (GAD) in consultation with, and at the request of, the Registrar General. A reference volume about the projections for the four countries of the United Kingdom will be published later in 2004 (ONS Series PP2 no 25). This volume will contain details of the methodology and underlying assumptions used in producing the national projections.

Section 2 below summarises the methodology used in the sub-national projections and describes the underlying fertility, mortality, and migration assumptions. A brief commentary on the results is given in **Section 3**. The projections are made in more detail than is given in this report. Further information can be obtained from the General Register Office for Scotland (GROS) - see page 9 for contact points and address.

2. METHODOLOGY AND ASSUMPTIONS

Methodology

The results are produced by the demographic component method using a single year projection model (see next paragraph). That is, a projection is made by sex and single year of age (up to age 90 & over) for each future year. This is done for arithmetical convenience and should not be taken to imply that reliable projections can be made in such detail. However, it provides "building blocks" which users can aggregate into age-groups of their choice for the years in which they are interested. For example, the production of results in standard five-year age groups (0-4, 5-9, 10-14, etc.) does not help the education planner wishing to know the size of the future population of secondary school age. Also, as some planning is done on a "rolling" basis (for example 10 years from a moving base date) it is useful to be able to provide a projection for any future year rather than just selected years.

The projection starts with the population estimates for the base year, disaggregated by single year of age, sex, and area. This base population is then projected one year ahead. First, an estimate of the numbers surviving to be one year older is made by applying a series of mortality rates to give the numbers of deaths, and hence survivors, at each age. The numbers of live births in the year are produced, using fertility rates in combination with the female populations of child bearing age; and an allowance is made for infant mortality. Lastly, the expected number and age/sex structure of people entering and leaving the area is taken into account in order to cover changes in the population due to migration. These three components of population change, together with the starting population, combine to form a projection of the population one year from the base date. The process can be repeated as often as required. For each year of the projection period, it is necessary to make assumptions about the future fertility rates (to give the number of births), mortality rates (for deaths) and migration. The following paragraphs describe the base population and the assumptions made.

Base population

The Registrar General's mid-2002 population estimates, published in June 2003 on the GROS website, were used as the base population. These cover all persons usually resident in each area, whatever their nationality. Usual residents temporarily away from home are included, but visitors are excluded. Students are taken to be resident at their term-time address. Members of HM and non-UK Armed Forces stationed in Scotland are included; HM forces stationed outside Scotland are excluded.

Fertility

The projected number of births was obtained by applying fertility rates to the numbers of women at each childbearing age, for each year of the projection period. In determining the fertility rates used in the national projections for Scotland, assumptions were made about the average completed family size for successive generations of women. This measure tends to be more stable over time than fertility rates for specific years, because of generational differences in the timing of having families. It was assumed that the average completed family size would continue to decline from just under 2 children per woman for those born in the mid to late 1950s and now reaching the end of their child bearing lives, to 1.59 for those born in the 1980s, before rising again slightly to 1.60 for those born in 1985 and later. The underlying assumptions on average completed family size for the current projections are shown in the table below. The resultant age specific fertility rates assumed for Scotland as a whole are given in **Appendix A**.

Women born at beginning of calendar year	Assumed average completed family size	Average family size completed by mid-2002	Average age at motherhood (years)
1950	2.08	2.08	26.1
1955	1.95	1.95	26.7
1960	1.87	1.84	27.4
1965	1.80	1.57	28.1
1970	1.68	1.00	28.5
1975	1.59	0.46	28.9
1980	1.59	0.15	29.2
1985	1.60	-	29.2
1990	1.60	-	29.3
1995	1.60	-	29.3
2000 & later	1.60	-	29.3

The projected number of births and the differences from the 2000-based projections are shown in the table below. The annual number of births is expected to fall from around 52,000 in 2002-03 to around 49,000 by the end of the projection period.

For local areas, the assumed national fertility rates have been adjusted to take account of local variations observed in the three year period preceding the projection. The local scaling factors used to adjust the national rates are given in **Appendix C**. Projected births by area are shown in **Table 4**.

Mortality

The projected number of deaths each year was calculated by applying mortality rates by age and sex to the appropriate sub-populations. GAD based the national rates for the first year of the projections, 2002-03, on estimates of the numbers of deaths in that period that were available in the Autumn of 2003. The mortality rates for later years were based on long-term trends up to 2002-03. Generally, mortality rates are projected to fall, initially at varying rates but tending to a reduction of 1.0 per cent a year at all ages by 2027. In line with the long-term trends, it has been assumed that the mortality rates for Scotland will continue to be higher at most ages than those for England and Wales.

	2002	2003	2004	2005	2006	2007	2008	2009	2010	2011	2012	2013	2014	2015	2016	2017
	-2003	-2004	-2005	-2006	-2007	-2008	-2009	-2010	-2011	-2012	-2013	-2014	-2015	-2016	-2017	-2018
Live births	52	51	50	49	49	48	48	48	48	48	48	48	49	49	49	49
Difference from 2000-based	-0.3	-1.1	-1.5	-1.8	-2.0	-2.1	-2.2	-2.2	-2.1	-2.1	-2.0	-2.0	-1.8	-1.5	-1.3	-1.1

Overall, the mortality rates assumed for these projections are lower at older ages than those that were used in preparing the 2000-based projections. The assumed expectation of life in 2018 has increased slightly for males and females, compared with the 2000-based projections, to 77.2 for men and 82.0 for women. The national mortality rates are shown, for selected ages and for selected years of the projection, in **Appendix B**.

For local areas, the assumed national mortality rates have been adjusted to take account of local variations observed in the three year period preceding the projections. The local scaling factors used to adjust the national rates are shown in **Appendix C**.

Migration

Assumptions about future levels of migration at Scotland level were based on analysis of trends in civilian migration to and from the UK and between the four constituent countries of the UK. Reflecting the most recent information, the latest, 2002-based, projections assume net out migration of 1,500 from 2003-04 onwards; the previous, 2000-based sub-national projections, assumed nil migration per year.

The net migration assumptions for local areas were made after consultation with other central government departments and local authorities. They are based on an analysis of recent trends in migration, but where appropriate also take account of known events that will affect the population distribution. The assumptions for each area are shown in **Appendix D**. It is important to remember that the local assumptions have to be constrained to the totals used in the national projections and that for the longer term, migration forecasts are highly speculative.

Council area specific age/sex distributions have been assumed for the in- and out- migrant flows at that level. The distributions are based on 2001 Census migration data flows and are controlled to the age/sex distribution used for Scotland in the national projection.

3. RESULTS OF THE PROJECTIONS

Scotland

Following a steady decline over most of the 1980s, small increases in the population of Scotland were recorded in each of the seven years up to 1995 followed by a general decrease up to 2002. The 2002-based projection shows the total population of Scotland continuing to fall slowly from 5.05 million in 2002 to 4.94 million by 2018 (falling below 5 million in 2009). The slow but steady population decline is a result of the increasing excess of deaths over births, and a modest but continuing decline.

Components of population change

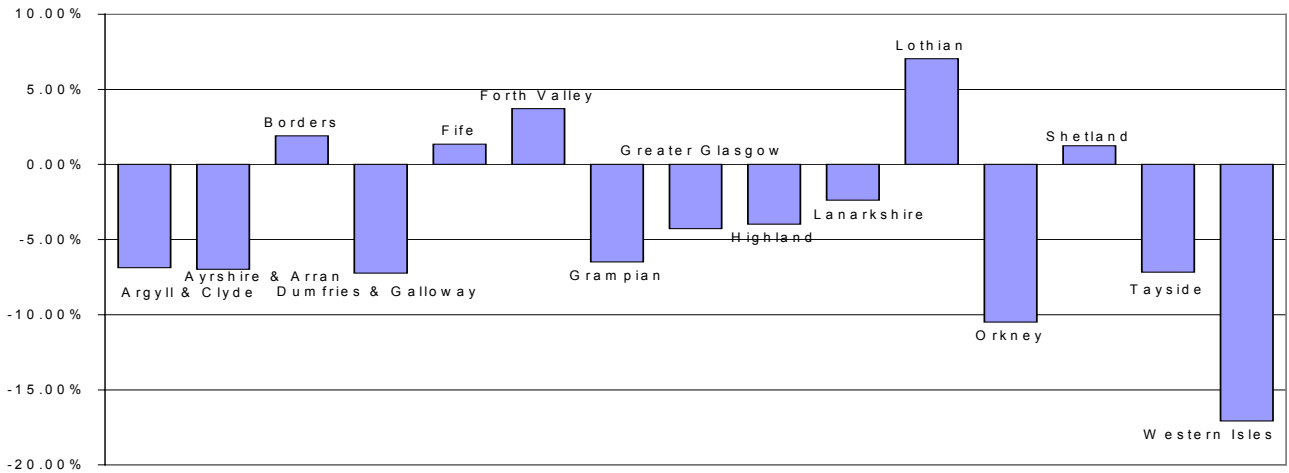
(thousands)

	Start population (at mid year)	Births	Deaths	Migration	Change	Start population (at mid year)	Births	Deaths	Migration	Change	
2002-03	5,054.8	51.8	58.3	-3.0	-9.5	2010-11	4,991.5	48.2	54.0	-1.5	-7.3
2003-04	5,045.3	50.8	56.7	-1.5	-7.4	2011-12	4,984.2	48.3	53.9	-1.5	-7.2
2004-05	5,037.8	50.0	56.1	-1.5	-7.7	2012-13	4,977.1	48.3	53.9	-1.5	-7.1
2005-06	5,030.2	49.3	55.6	-1.5	-7.8	2013-14	4,970.0	48.4	53.9	-1.5	-7.0
2006-07	5,022.4	48.8	55.1	-1.5	-7.9	2014-15	4,963.0	48.5	54.0	-1.5	-6.9
2007-08	5,014.5	48.4	54.7	-1.5	-7.8	2015-16	4,956.1	48.8	54.1	-1.5	-6.8
2008-09	5,006.7	48.3	54.4	-1.5	-7.7	2016-17	4,949.3	48.9	54.3	-1.5	-6.9
2009-10	4,999.0	48.2	54.2	-1.5	-7.5	2017-18	4,942.4	48.9	54.5	-1.5	-7.1
						2018	4,935.3				

Council and health board areas

Of the 15 health board areas the populations of five are projected to increase between 2002 and 2018, the remaining ten show projected falls in population (**Table 1** and **Figure 1**). Lothian (+7 per cent) and Forth Valley (+4 per cent) are the two health board areas with the greatest projected increases in population while Western Isles (-17 per cent) and Orkney (-10 per cent) show the greatest decreases as shown in the chart below.

Figure 1 Percentage change in population between 2002 and 2018, by health board area

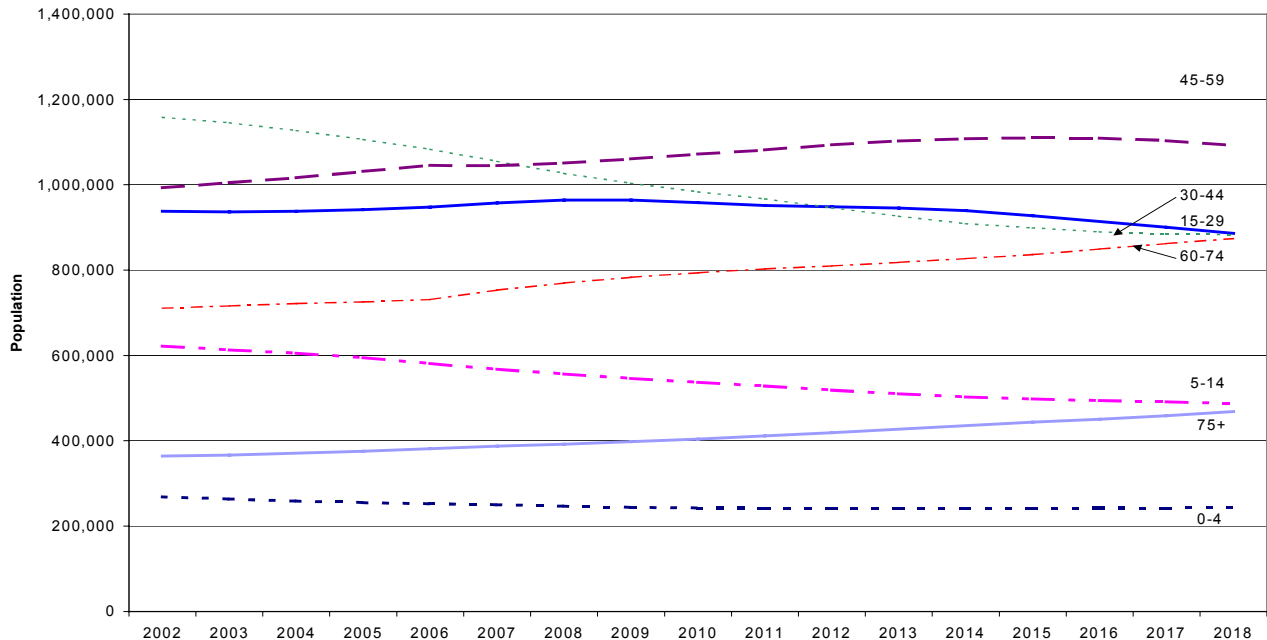


Amongst council areas, the largest percentage gains in the period 2002 to 2018 are 15 per cent for West Lothian and 12 per cent for East Lothian (**Table 1**). Over the same period, Eilean Siar shows the sharpest decline (17 per cent), followed by Dundee City (14 per cent) and Aberdeen City (12 per cent).

Age analysis

Although there are differences from area to area, the general pattern is of an ageing population (**Tables 2 & 3** and **Figure 2**).

Figure 2 Projected Population by broad age groups, Scotland, 2002-2018



The number of children under 5 is projected to fall by 10 per cent by 2018, with most of the decline occurring by 2008. The largest decline is projected for Eilean Siar (-15 per cent by 2008 and -39 per cent by 2018), followed by Orkney (-18 per cent by 2008 and -36 per cent by 2018). In this age group Glasgow City (+10 per cent) shows the largest projected increase by 2018.

For 5-14 year-olds the population is projected to fall by 22 per cent by 2018. The largest fall is in Eilean Siar (-38 per cent by 2018) closely followed by Dumfries & Galloway and Orkney (both -37 per cent by 2018).

In the age range 15-29, the peak ages for migration, the population remains relatively stable across Scotland. The steepest fall by 2018 is Eilean Siar (-40 per cent). By the end of the projection period East Lothian shows the highest rate of growth at 32 per cent. The areas with the next greatest rate of growth are Stirling and West Lothian (16 and 15 per cent respectively).

In the 30-44 age group, the picture is of rapid decline for the majority of areas, declining by almost a quarter by 2018. However, in contrast, Edinburgh city is projected to have no change in the population by 2018 (-0.1 per cent), with a small decline of -3.2 per cent in 2008. The decline in Glasgow City is less than average, -15 per cent by 2018.

For the majority of areas in Scotland the population aged 45-59 is projected to increase, the greatest changes by 2018 being increases of 35 per cent in West Lothian, 24 per cent in East Lothian and 20 per cent in Falkirk.

For those aged 60-74 an increase of 8 per cent is projected to 2008, with a strong rise thereafter. Aberdeenshire, West Lothian and Shetland Islands, show particularly strong rises (+55 per cent, +45 per cent and +38 per cent respectively by 2018). Glasgow City is the only area with a small projected fall, at 2 per cent. The projections assume that mortality rates in Glasgow City continue to be considerably higher relative to Scotland as a whole (**Appendix C**).

There continues to be strong projected growth in the very elderly (i.e. 75 and over). The largest increase appears in West Lothian (+64 per cent by 2018), followed by Aberdeenshire (+56 per cent) and Clackmannanshire (+47 per cent). The only decrease is found in Glasgow City (-7 per cent).

4. POPULATION COMPARISONS WITH 2000-BASED PROJECTIONS

Some comments on the differences between the assumptions used in preparing these latest projections and the previous, 2000-based, sub-national projections were given in **Section 2**.

For Scotland, the latest 2002-based projections are lower compared with the 2000-based projections, they are lower in all the following years up to 2018. This is due mainly to the change in the population base after the results of the 2001 Census and changes to the underlying assumptions mentioned earlier. Any more detailed comparisons at the subnational level are distorted due to these changes in the population base, and so no further comment is provided.

5. NOTES, DEFINITIONS AND MAPS

Population covered

The population of an area includes all those usually resident there whatever their nationality. Students are treated as being resident at their term-time address. Members of HM and non-UK armed forces stationed in Scotland are included; HM forces stationed outside Scotland are excluded.

Age

Population figures relate to 30 June of the year shown and ages relate to age last birthday.

Presentation and use of results

Although the data are tabulated in units, this does not imply accuracy to that level. They are supplied in this way for the convenience of users wishing to aggregate the data to area/age/sex groupings of their choice without encountering rounding problems. Users are advised to exercise caution when using the data at a highly disaggregated level. **Appendix E** gives some further guidance on the uses and limitations of projections.

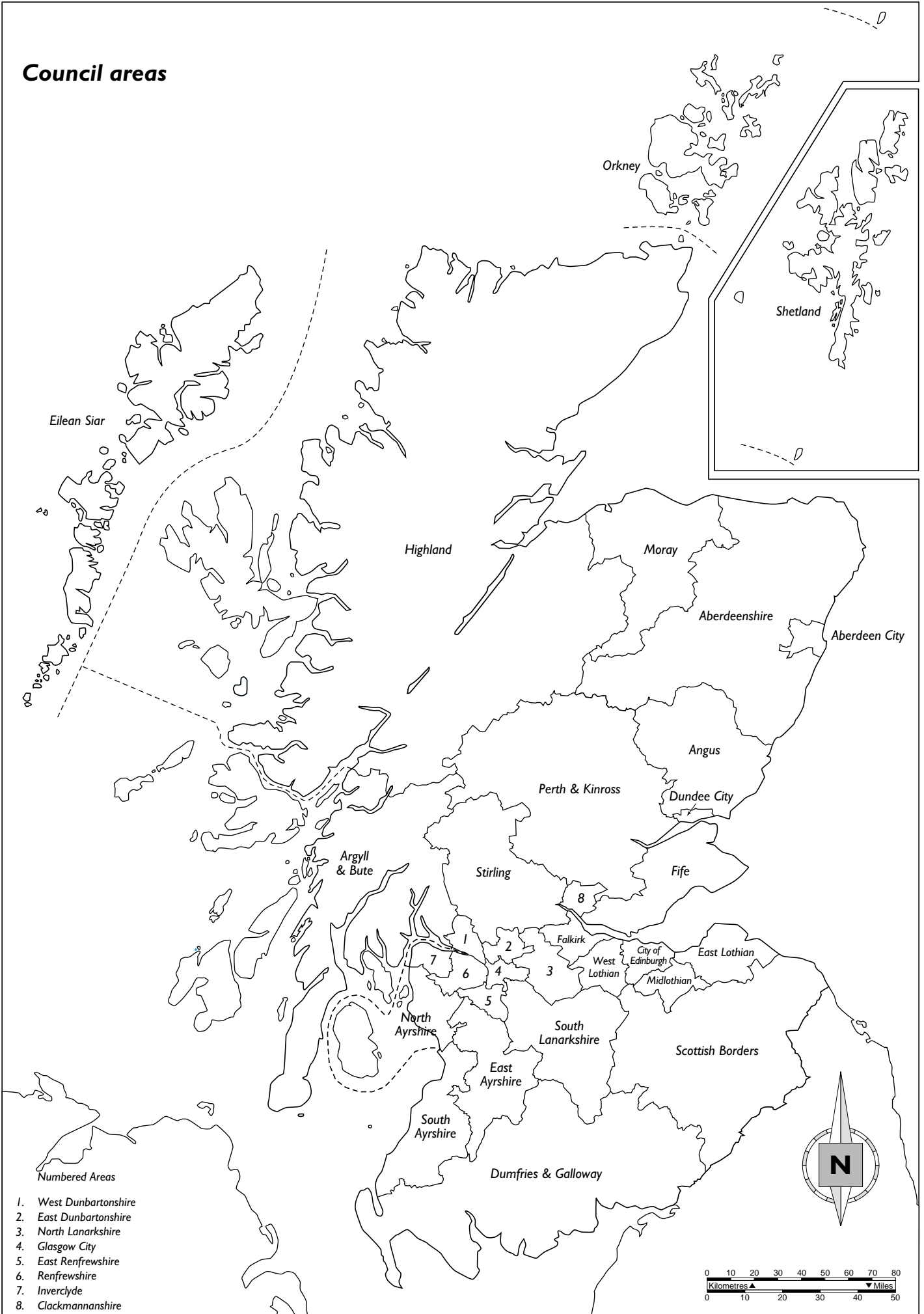
Administrative areas

The composition of the health board areas in terms of the council areas is summarised in the **table below**. Maps of the council area and existing health board areas can be found on pages 7 & 8.

Composition of health board areas

Health board area	Council area
Argyll & Clyde	Argyll & Bute, East Renfrewshire (part), Inverclyde, Renfrewshire, West Dunbartonshire (part)
Ayrshire & Arran	East Ayrshire, North Ayrshire, South Ayrshire
Borders	Scottish Borders
Dumfries & Galloway	Dumfries & Galloway
Fife	Fife
Forth Valley	Clackmannanshire, Falkirk, Stirling
Grampian	Aberdeen City, Aberdeenshire, Moray
Greater Glasgow	East Dunbartonshire, East Renfrewshire (part), Glasgow City, North Lanarkshire (part), South Lanarkshire (part), West Dunbartonshire (part)
Highland	Highland
Lanarkshire	East Renfrewshire (part), North Lanarkshire (part), South Lanarkshire (part)
Lothian	East Lothian, City of Edinburgh, Midlothian, West Lothian
Orkney	Orkney Islands
Shetland	Shetland Islands
Tayside	Angus, Dundee City, Perth & Kinross
Western Isles	Eilean Siar

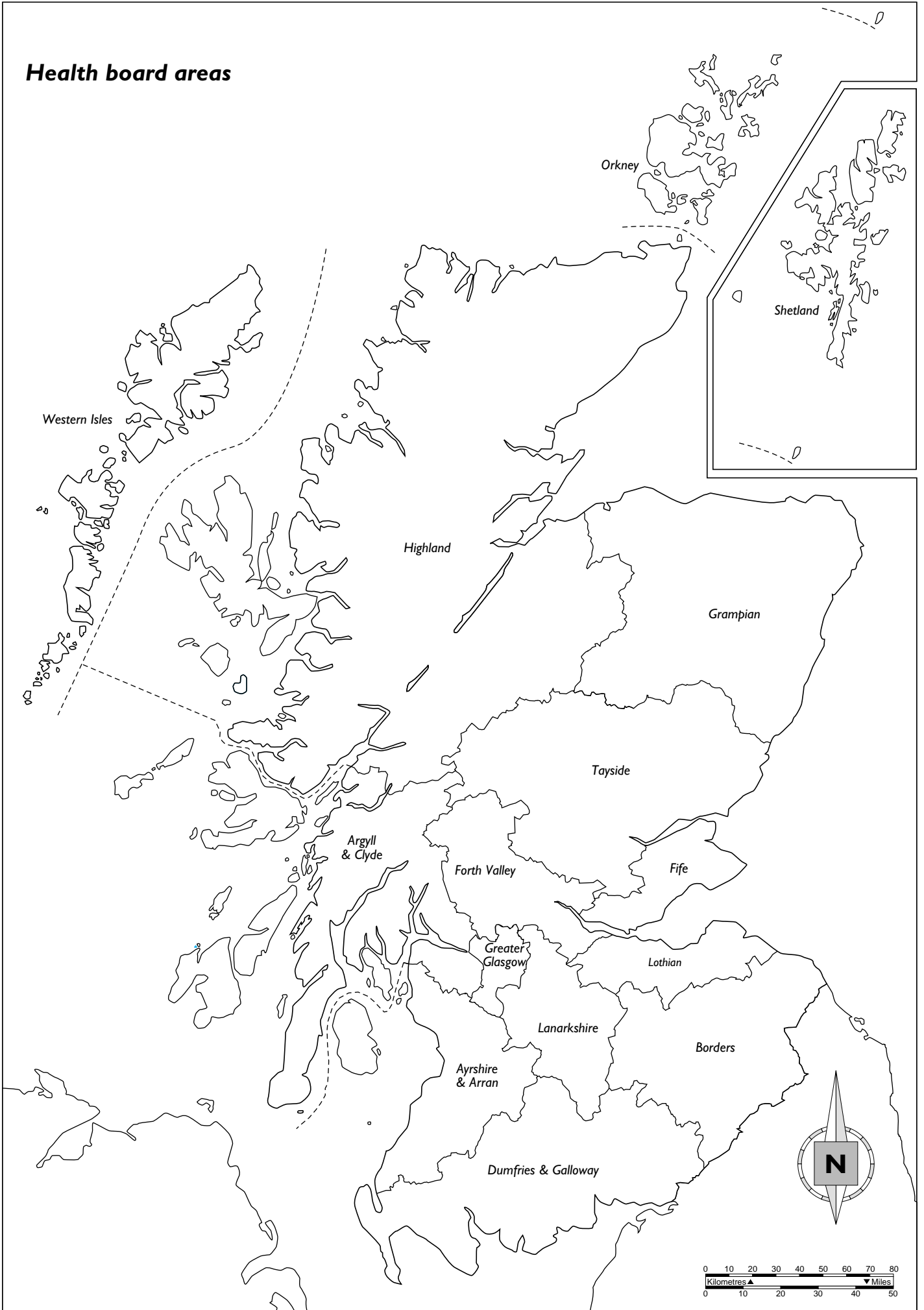
Council areas



Numbered Areas

- 1. West Dunbartonshire
- 2. East Dunbartonshire
- 3. North Lanarkshire
- 4. Glasgow City
- 5. East Renfrewshire
- 6. Renfrewshire
- 7. Inverclyde
- 8. Clackmannanshire

Health board areas



6. FURTHER INFORMATION

Sub-national projections

The projections for the administrative areas of Scotland summarised in this booklet are also available by single year of age and sex for each year of the projection period, 2002 to 2018. For further information on data availability and formats please contact:

**Customer Services
Demography Branch
General Register Office for Scotland
Ladywell House
Ladywell Road
EDINBURGH
EH12 7TF
Telephone: 0131 314 4254 Fax: 0131 314 4696
Email: customer@gro-scotland.gsi.gov.uk**

National projections

National population projections for Scotland are prepared on a regular basis by the Government Actuary, in consultation with, and at the request of, the Registrar General. The latest projections, to which the sub-national projections in this booklet have been controlled, are based on the mid-2002 population estimates. The projections cover the period to 2042 and are available by single year of age and sex for each year of the projection period. More detailed data is available from the GAD website (www.gad.gov.uk) or by contacting GAD at:

**Government Actuary's Department
Finlaison House
15-17 Furnival Street
London
EC4A 1AB
Telephone: 020 7211 2622 Fax: 020 7211 2640
Email: projections@gad.gov.uk**

Other related data available from the Demography Branch, GROS

Estimates of the resident population of Scotland are prepared by GROS on an annual basis. They are available by sex and single year of age for each of the administrative areas of Scotland. The estimates relate to 30 June of the year covered and, generally, they are released during April of the following year. A substantial amount of historical data is available. Information is also available on a wide range of related topics such as migration estimates and data from the 2001 and earlier Censuses of Population.

Information via the Internet

A range of statistical information from the General Register Office for Scotland is also available via the Internet on the General Register Office for Scotland's World Wide Web site. The GROS web site may be found at:

www.gro-scotland.gov.uk

This site also contains more general information about the work of the Department including details of opening hours and arrangements for accessing birth, marriage and death registers.

Table 1 Projected population by council and health board area

Area	2002	2003	2004	2005	2006	2007	2008	2009	2010
SCOTLAND	5,054,800	5,045,266	5,037,824	5,030,170	5,022,364	5,014,480	5,006,674	4,999,015	4,991,536
Council areas									
Aberdeen City	209,270	207,400	205,945	204,475	202,978	201,480	199,967	198,454	196,938
Aberdeenshire	227,280	227,259	227,418	227,510	227,547	227,528	227,456	227,341	227,182
Angus	108,130	107,527	107,052	106,556	106,044	105,498	104,925	104,331	103,730
Argyll & Bute	91,030	90,720	90,584	90,447	90,316	90,193	90,074	89,970	89,875
Clackmannanshire	47,930	47,700	47,615	47,513	47,396	47,271	47,123	46,965	46,792
Dumfries & Galloway	147,310	146,695	146,199	145,676	145,113	144,523	143,894	143,237	142,569
Dundee City	144,180	142,512	141,169	139,831	138,503	137,176	135,872	134,593	133,325
East Ayrshire	119,740	119,142	118,607	118,057	117,495	116,927	116,351	115,777	115,190
East Dunbartonshire	107,310	106,831	106,449	106,056	105,652	105,238	104,835	104,442	104,055
East Lothian	90,750	91,263	91,915	92,556	93,192	93,825	94,464	95,101	95,742
East Renfrewshire	89,630	89,910	90,228	90,537	90,846	91,143	91,446	91,748	92,054
Edinburgh, City of	448,080	448,541	449,149	449,828	450,548	451,330	452,194	453,126	454,101
Eilean Siar	26,200	25,890	25,631	25,368	25,113	24,858	24,598	24,333	24,065
Falkirk	145,560	145,789	146,137	146,474	146,801	147,126	147,448	147,765	148,082
Fife	350,700	350,992	351,390	351,742	352,066	352,369	352,665	352,963	353,238
Glasgow City	577,350	575,851	572,380	569,161	566,192	563,479	561,033	558,789	556,793
Highland	208,140	207,820	207,541	207,211	206,828	206,409	205,952	205,463	204,954
Inverclyde	83,600	82,930	82,320	81,718	81,122	80,527	79,929	79,349	78,759
Midlothian	80,500	80,592	80,931	81,272	81,605	81,937	82,267	82,601	82,935
Moray	86,740	86,294	85,948	85,579	85,191	84,793	84,374	83,938	83,503
North Ayrshire	135,650	135,060	134,575	134,067	133,554	133,007	132,446	131,881	131,311
North Lanarkshire	321,350	320,917	320,603	320,264	319,884	319,486	319,059	318,631	318,200
Orkney Islands	19,210	19,066	18,972	18,872	18,772	18,655	18,536	18,417	18,299
Perth & Kinross	135,160	135,324	135,579	135,810	136,021	136,213	136,389	136,551	136,721
Renfrewshire	171,940	171,033	170,242	169,410	168,559	167,684	166,820	165,953	165,079
Scottish Borders	107,400	107,548	107,794	108,006	108,201	108,363	108,515	108,649	108,775
Shetland Islands	21,940	21,829	21,864	21,899	21,920	21,948	21,979	21,998	22,026
South Ayrshire	111,670	111,170	110,779	110,371	109,955	109,533	109,095	108,664	108,235
South Lanarkshire	302,110	301,713	301,366	300,967	300,537	300,086	299,612	299,121	298,634
Stirling	86,150	86,458	86,923	87,387	87,855	88,318	88,783	89,266	89,748
West Dunbartonshire	92,830	92,189	91,674	91,183	90,687	90,197	89,731	89,284	88,837
West Lothian	159,960	161,301	162,845	164,367	165,871	167,360	168,842	170,314	171,789
Health board areas									
Argyll & Clyde	418,750	416,233	414,498	412,733	410,950	409,144	407,367	405,616	403,844
Ayrshire & Arran	367,060	365,372	363,961	362,495	361,004	359,467	357,892	356,322	354,736
Borders	107,400	107,548	107,794	108,006	108,201	108,363	108,515	108,649	108,775
Dumfries & Galloway	147,310	146,695	146,199	145,676	145,113	144,523	143,894	143,237	142,569
Fife	350,620	350,992	351,390	351,742	352,066	352,369	352,665	352,963	353,238
Forth Valley	279,370	279,947	280,675	281,374	282,052	282,715	283,354	283,996	284,622
Grampian	523,290	520,953	519,311	517,564	515,716	513,801	511,797	509,733	507,623
Greater Glasgow	866,080	863,919	859,926	856,197	852,718	849,489	846,550	843,844	841,436
Highland	208,140	207,820	207,541	207,211	206,828	206,409	205,952	205,463	204,954
Lanarkshire	552,910	551,942	551,422	550,813	550,127	549,400	548,622	547,827	547,006
Lothian	779,100	781,697	784,840	788,023	791,216	794,452	797,767	801,142	804,567
Orkney	19,210	19,066	18,972	18,872	18,772	18,655	18,536	18,417	18,299
Shetland	21,940	21,829	21,864	21,899	21,920	21,948	21,979	21,998	22,026
Tayside	387,420	385,363	383,800	382,197	380,568	378,887	377,186	375,475	373,776
Western Isles	26,200	25,890	25,631	25,368	25,113	24,858	24,598	24,333	24,065

(persons)

2011	2012	2013	2014	2015	2016	2017	2018	Area
4,984,248	4,977,097	4,970,025	4,963,004	4,956,083	4,949,258	4,942,373	4,935,272	SCOTLAND
								Council areas
195,412	193,870	192,329	190,772	189,201	187,626	186,035	184,427	Aberdeen City
226,985	226,766	226,516	226,228	225,921	225,594	225,242	224,878	Aberdeenshire
103,112	102,472	101,808	101,131	100,430	99,716	98,977	98,228	Angus
89,786	89,708	89,635	89,587	89,532	89,505	89,484	89,465	Argyll & Bute
46,605	46,415	46,218	46,014	45,806	45,585	45,353	45,125	Clackmannanshire
141,884	141,190	140,477	139,751	139,005	138,236	137,458	136,656	Dumfries & Galloway
132,074	130,837	129,596	128,370	127,146	125,928	124,717	123,506	Dundee City
114,604	114,015	113,416	112,820	112,221	111,616	111,000	110,363	East Ayrshire
103,670	103,292	102,919	102,549	102,185	101,822	101,457	101,082	East Dunbartonshire
96,386	97,049	97,725	98,410	99,114	99,829	100,560	101,304	East Lothian
92,382	92,705	93,043	93,381	93,740	94,098	94,476	94,851	East Renfrewshire
455,157	456,246	457,351	458,502	459,656	460,855	462,050	463,238	Edinburgh, City of
23,795	23,506	23,224	22,930	22,638	22,335	22,035	21,725	Eilean Siar
148,405	148,726	149,043	149,351	149,661	149,963	150,279	150,588	Falkirk
353,520	353,812	354,088	354,347	354,619	354,882	355,124	355,349	Fife
555,015	553,414	551,988	550,716	549,576	548,575	547,700	546,857	Glasgow City
204,405	203,837	203,241	202,615	201,967	201,298	200,607	199,887	Highland
78,180	77,607	77,030	76,458	75,886	75,323	74,755	74,177	Inverclyde
83,269	83,614	83,960	84,313	84,675	85,041	85,411	85,782	Midlothian
83,056	82,597	82,143	81,702	81,265	80,827	80,395	79,969	Moray
130,729	130,130	129,518	128,889	128,249	127,608	126,941	126,252	North Ayrshire
317,760	317,320	316,858	316,387	315,905	315,420	314,899	314,364	North Lanarkshire
18,165	18,040	17,911	17,780	17,645	17,501	17,355	17,196	Orkney Islands
136,876	137,019	137,166	137,312	137,466	137,612	137,748	137,888	Perth & Kinross
164,194	163,300	162,406	161,500	160,599	159,693	158,786	157,865	Renfrewshire
108,895	108,995	109,095	109,172	109,244	109,321	109,383	109,442	Scottish Borders
22,064	22,085	22,105	22,127	22,145	22,167	22,190	22,214	Shetland Islands
107,806	107,382	106,954	106,536	106,119	105,703	105,274	104,852	South Ayrshire
298,133	297,631	297,147	296,643	296,114	295,590	295,061	294,509	South Lanarkshire
90,241	90,754	91,267	91,793	92,344	92,892	93,446	94,010	Stirling
88,407	88,000	87,593	87,191	86,797	86,406	85,998	85,577	West Dunbartonshire
173,276	174,763	176,255	177,727	179,212	180,691	182,177	183,646	West Lothian
								Health board areas
402,092	400,349	398,612	396,883	395,163	393,462	391,758	390,007	Argyll & Clyde
353,139	351,527	349,888	348,245	346,589	344,927	343,215	341,467	Ayrshire & Arran
108,895	108,995	109,095	109,172	109,244	109,321	109,383	109,442	Borders
141,884	141,190	140,477	139,751	139,005	138,236	137,458	136,656	Dumfries & Galloway
353,520	353,812	354,088	354,347	354,619	354,882	355,124	355,349	Fife
285,251	285,895	286,528	287,158	287,811	288,440	289,078	289,723	Forth Valley
505,453	503,233	500,988	498,702	496,387	494,047	491,672	489,274	Grampian
839,275	837,313	835,547	833,956	832,527	831,242	830,097	828,976	Greater Glasgow
204,405	203,837	203,241	202,615	201,967	201,298	200,607	199,887	Highland
546,160	545,315	544,460	543,573	542,644	541,728	540,761	539,764	Lanarkshire
808,088	811,672	815,291	818,952	822,657	826,416	830,198	833,970	Lothian
18,165	18,040	17,911	17,780	17,645	17,501	17,355	17,196	Orkney
22,064	22,085	22,105	22,127	22,145	22,167	22,190	22,214	Shetland
372,062	370,328	368,570	366,813	365,042	363,256	361,442	359,622	Tayside
23,795	23,506	23,224	22,930	22,638	22,335	22,035	21,725	Western Isles

Table 2 Projected population, by sex and broad age group; council and health board areas

Age group	2002			2008			2013			2018		
	Persons	Males	Females	Persons	Males	Females	Persons	Males	Females	Persons	Males	Females
SCOTLAND												
All Ages	5054.8	2431.8	2623.0	5006.7	2409.5	2597.2	4970.0	2390.0	2580.1	4935.3	2368.9	2566.3
0-4	268.5	137.4	131.1	246.6	126.1	120.5	240.7	123.1	117.7	243.1	124.3	118.8
5-14	621.8	318.7	303.1	556.5	283.9	272.6	510.2	259.4	250.8	487.6	247.8	239.8
15-29	938.2	470.4	467.8	964.1	487.2	476.9	945.2	477.1	468.1	886.4	445.6	440.8
30-44	1158.2	559.9	598.3	1026.8	492.4	534.4	926.3	446.2	480.1	883.4	430.0	453.4
45-59	993.4	489.5	503.9	1051.0	511.1	539.9	1102.2	528.6	573.6	1092.1	517.4	574.7
60-74	710.4	326.9	383.5	769.7	361.7	408.0	817.9	387.3	430.6	873.9	413.6	460.3
75 & over	364.3	128.9	235.3	391.9	147.1	244.8	427.4	168.2	259.2	468.8	190.2	278.6
Council areas												
Aberdeen City												
All Ages	209.3	102.7	106.6	200.0	97.5	102.5	192.3	93.3	99.0	184.4	88.9	95.5
0-4	10.0	5.2	4.8	9.3	4.7	4.6	8.6	4.4	4.3	8.2	4.1	4.0
5-14	21.8	11.2	10.6	18.6	9.6	9.0	16.9	8.6	8.4	15.7	7.9	7.9
15-29	48.5	24.6	23.9	44.8	21.9	22.9	40.3	19.3	21.0	37.5	18.0	19.5
30-44	48.3	24.4	23.9	42.6	21.7	20.9	38.6	19.7	18.9	32.7	16.3	16.4
45-59	38.8	19.7	19.1	40.9	20.6	20.4	41.6	20.6	20.9	40.8	20.0	20.8
60-74	27.1	12.4	14.7	27.8	13.1	14.6	29.5	14.2	15.3	32.0	15.6	16.4
75 & over	14.9	5.2	9.7	16.0	5.9	10.1	16.8	6.5	10.3	17.6	7.0	10.6
Aberdeenshire												
All Ages	227.3	112.5	114.8	227.5	111.6	115.8	226.5	110.5	116.0	224.9	109.0	115.9
0-4	12.7	6.6	6.1	11.3	5.8	5.5	10.5	5.4	5.1	10.4	5.4	5.0
5-14	31.1	15.9	15.2	28.4	14.6	13.8	26.0	13.3	12.7	24.0	12.3	11.8
15-29	35.6	18.3	17.2	35.5	18.4	17.1	35.7	18.4	17.3	33.6	17.2	16.5
30-44	53.3	26.2	27.1	46.0	21.6	24.3	38.5	17.9	20.6	34.7	16.3	18.3
45-59	50.0	25.5	24.6	53.1	26.5	26.5	54.9	26.9	27.9	52.9	25.2	27.7
60-74	29.7	14.4	15.3	36.1	17.9	18.2	41.2	20.4	20.8	46.1	22.6	23.5
75 & over	14.9	5.6	9.3	17.3	6.9	10.4	19.9	8.3	11.5	23.1	10.0	13.2
Angus												
All Ages	108.1	52.3	55.8	104.9	50.9	54.1	101.8	49.4	52.4	98.2	47.7	50.6
0-4	5.6	2.9	2.7	4.7	2.4	2.3	4.1	2.1	2.0	3.7	1.9	1.8
5-14	13.2	6.8	6.5	12.2	6.2	6.0	10.8	5.5	5.3	9.5	4.9	4.6
15-29	17.0	8.8	8.2	15.7	8.5	7.2	15.3	8.5	6.8	14.2	8.0	6.2
30-44	23.4	11.3	12.0	19.9	9.4	10.6	16.4	7.6	8.8	13.9	6.7	7.3
45-59	23.1	11.3	11.7	23.4	11.3	12.1	23.4	11.1	12.3	22.8	10.6	12.2
60-74	16.9	8.0	8.9	19.0	9.1	9.9	20.7	9.9	10.7	21.7	10.3	11.4
75 & over	9.0	3.3	5.8	10.0	3.9	6.1	11.1	4.6	6.5	12.4	5.3	7.1
Argyll & Bute												
All Ages	91.0	45.2	45.8	90.1	44.7	45.4	89.6	44.4	45.3	89.5	44.1	45.3
0-4	4.4	2.2	2.2	3.8	1.9	1.9	3.9	2.0	1.9	4.2	2.1	2.1
5-14	11.2	5.7	5.5	9.3	4.7	4.6	7.9	3.9	4.0	7.6	3.7	3.8
15-29	13.8	7.9	5.9	15.5	8.8	6.7	16.2	9.1	7.2	14.8	8.2	6.6
30-44	19.4	9.9	9.5	17.2	8.6	8.5	15.5	8.1	7.5	16.1	8.6	7.5
45-59	19.4	9.6	9.8	19.4	9.5	9.9	19.5	9.3	10.1	18.7	8.7	10.0
60-74	15.1	7.2	7.9	16.6	7.9	8.6	17.4	8.3	9.1	17.8	8.5	9.3
75 & over	7.7	2.8	5.0	8.4	3.2	5.2	9.2	3.7	5.5	10.4	4.3	6.1
Clackmannanshire												
All Ages	47.9	23.2	24.7	47.1	23.1	24.0	46.2	23.0	23.2	45.1	22.7	22.4
0-4	2.6	1.4	1.3	2.3	1.2	1.2	2.0	1.0	1.0	1.9	1.0	1.0
5-14	6.5	3.2	3.3	5.8	2.9	2.9	5.3	2.6	2.6	4.7	2.3	2.4
15-29	8.3	4.2	4.1	8.2	4.4	3.8	8.3	4.5	3.7	7.8	4.3	3.6
30-44	11.0	5.4	5.6	9.6	4.8	4.9	7.9	4.0	3.9	7.0	3.9	3.1
45-59	10.0	4.9	5.0	10.1	5.0	5.1	10.5	5.3	5.3	10.5	5.3	5.2
60-74	6.4	3.0	3.4	7.6	3.6	4.0	8.3	4.0	4.3	8.6	4.1	4.5
75 & over	3.1	1.1	2.0	3.5	1.3	2.2	4.0	1.6	2.4	4.5	1.8	2.7
Dumfries & Galloway												
All Ages	147.3	71.2	76.1	143.9	69.8	74.1	140.5	68.3	72.1	136.7	66.6	70.1
0-4	7.1	3.6	3.4	5.9	3.0	2.9	5.4	2.8	2.6	5.3	2.7	2.6
5-14	18.2	9.3	8.9	15.3	7.8	7.5	12.8	6.6	6.2	11.5	5.9	5.6
15-29	21.2	10.7	10.5	21.7	11.3	10.4	21.7	11.5	10.2	19.0	10.2	8.9
30-44	31.2	15.1	16.1	25.3	12.0	13.2	20.1	9.5	10.6	18.0	8.7	9.3
45-59	31.4	15.5	15.9	32.5	15.9	16.7	33.2	15.9	17.3	31.9	15.2	16.7
60-74	25.3	12.0	13.3	28.4	13.7	14.7	30.6	14.9	15.7	32.0	15.6	16.3
75 & over	13.0	5.0	8.0	14.8	6.0	8.8	16.6	7.1	9.5	19.0	8.3	10.7

(thousands)

Age group	2002			2008			2013			2018		
	Persons	Males	Females	Persons	Males	Females	Persons	Males	Females	Persons	Males	Females
Dundee City												
All Ages	144.2	68.4	75.8	135.9	64.2	71.7	129.6	61.1	68.5	123.5	58.1	65.4
0-4	7.1	3.6	3.5	6.6	3.4	3.2	6.3	3.2	3.1	6.2	3.2	3.0
5-14	16.3	8.4	7.9	13.5	6.8	6.7	12.1	6.0	6.1	11.5	5.8	5.8
15-29	31.5	15.5	16.0	31.6	15.5	16.0	28.6	13.9	14.8	25.5	12.2	13.3
30-44	30.0	14.1	15.9	23.9	11.2	12.7	21.7	10.5	11.2	20.5	10.0	10.5
45-59	26.0	12.8	13.2	26.9	13.0	14.0	27.2	12.9	14.3	25.5	11.9	13.6
60-74	21.4	9.7	11.7	21.1	9.8	11.3	21.0	9.8	11.1	21.5	10.1	11.4
75 & over	11.9	4.3	7.7	12.3	4.5	7.8	12.6	4.8	7.9	12.9	5.0	7.8
East Ayrshire												
All Ages	119.7	57.6	62.1	116.4	56.1	60.3	113.4	54.7	58.7	110.4	53.2	57.2
0-4	6.3	3.2	3.1	5.6	2.9	2.7	5.3	2.7	2.5	5.1	2.6	2.5
5-14	15.5	8.0	7.5	13.3	6.9	6.4	12.1	6.3	5.9	11.3	5.9	5.4
15-29	20.4	10.2	10.2	20.4	10.3	10.1	19.8	10.2	9.6	17.9	9.3	8.6
30-44	27.3	13.2	14.2	24.0	11.5	12.5	20.1	9.6	10.6	18.1	8.6	9.5
45-59	24.2	12.0	12.3	24.7	12.0	12.7	25.8	12.3	13.5	26.0	12.2	13.7
60-74	17.5	8.1	9.5	19.1	9.0	10.1	20.2	9.7	10.5	20.9	10.0	10.9
75 & over	8.5	3.0	5.5	9.1	3.5	5.7	10.0	4.0	6.1	11.1	4.5	6.6
East Dunbartonshire												
All Ages	107.3	51.5	55.8	104.8	49.2	55.6	102.9	47.3	55.7	101.1	45.3	55.8
0-4	5.5	2.9	2.6	4.9	2.4	2.5	5.1	2.5	2.6	5.4	2.7	2.7
5-14	14.4	7.4	6.9	12.0	6.0	6.1	10.5	4.9	5.5	10.3	4.8	5.5
15-29	17.9	9.1	8.7	18.9	9.6	9.3	18.0	8.9	9.1	16.0	7.6	8.4
30-44	23.4	11.0	12.4	19.3	8.7	10.6	17.7	7.7	10.0	17.7	7.5	10.2
45-59	22.9	11.0	11.9	23.7	11.1	12.6	23.8	11.0	12.8	21.7	9.7	12.0
60-74	15.9	7.4	8.5	17.2	8.0	9.3	17.8	8.1	9.7	18.9	8.6	10.3
75 & over	7.3	2.7	4.7	8.7	3.4	5.3	10.1	4.1	6.0	11.1	4.5	6.6
East Lothian												
All Ages	90.8	43.4	47.4	94.5	46.0	48.4	97.7	48.2	49.5	101.3	50.5	50.8
0-4	5.3	2.7	2.6	4.7	2.4	2.3	4.8	2.5	2.3	5.2	2.7	2.5
5-14	12.2	6.3	6.0	11.7	6.1	5.6	10.7	5.6	5.1	10.4	5.5	5.0
15-29	13.1	6.6	6.6	15.4	8.0	7.4	17.2	9.0	8.2	17.3	9.0	8.3
30-44	21.2	10.1	11.1	19.8	9.6	10.2	18.3	9.2	9.1	18.4	9.7	8.8
45-59	18.4	9.1	9.3	20.1	9.8	10.4	22.0	10.7	11.3	22.8	11.1	11.7
60-74	13.2	6.1	7.1	14.7	7.0	7.7	15.8	7.6	8.3	17.4	8.4	9.1
75 & over	7.3	2.7	4.7	8.1	3.2	4.9	8.9	3.7	5.2	9.7	4.2	5.5
East Renfrewshire												
All Ages	89.6	42.7	46.9	91.4	42.8	48.6	93.0	42.9	50.1	94.9	43.1	51.8
0-4	5.2	2.7	2.5	4.8	2.4	2.4	5.0	2.5	2.5	5.3	2.7	2.6
5-14	12.6	6.4	6.1	11.6	5.8	5.8	10.7	5.2	5.5	10.7	5.1	5.6
15-29	14.1	7.2	6.9	15.8	8.2	7.6	16.4	8.5	7.9	15.8	8.0	7.8
30-44	20.4	9.5	10.9	17.6	7.7	9.9	16.2	7.0	9.2	16.5	7.2	9.3
45-59	18.5	9.0	9.5	20.3	9.7	10.6	21.5	9.9	11.6	20.9	9.1	11.7
60-74	12.4	5.6	6.8	13.7	6.2	7.5	14.6	6.6	8.0	16.2	7.3	8.9
75 & over	6.5	2.3	4.2	7.6	2.8	4.8	8.6	3.2	5.3	9.4	3.6	5.9
Edinburgh, City of												
All Ages	448.1	214.8	233.2	452.2	220.7	231.5	457.4	226.0	231.4	463.2	231.3	231.9
0-4	21.6	11.1	10.6	20.9	10.8	10.2	21.3	11.0	10.3	21.6	11.1	10.5
5-14	45.9	23.7	22.2	41.1	21.2	19.8	38.7	20.1	18.6	38.7	20.1	18.6
15-29	106.8	52.4	54.4	111.5	56.2	55.3	107.5	54.8	52.8	103.6	53.1	50.5
30-44	106.2	52.3	53.9	102.8	51.8	51.1	104.6	53.9	50.8	106.0	55.9	50.1
45-59	79.0	38.9	40.1	84.8	41.7	43.1	89.7	44.2	45.4	92.0	45.4	46.6
60-74	55.2	25.0	30.2	56.9	26.5	30.5	60.3	28.5	31.9	65.2	31.2	34.0
75 & over	33.3	11.5	21.8	34.2	12.6	21.6	35.1	13.6	21.6	36.2	14.4	21.7
Eilean Siar												
All Ages	26.2	12.9	13.3	24.6	11.9	12.7	23.2	11.1	12.1	21.7	10.3	11.5
0-4	1.2	0.6	0.6	1.1	0.5	0.5	0.9	0.5	0.5	0.8	0.4	0.4
5-14	3.3	1.6	1.6	2.7	1.3	1.4	2.3	1.2	1.1	2.0	1.0	1.0
15-29	3.8	2.0	1.8	3.2	1.7	1.5	2.8	1.5	1.3	2.3	1.3	1.0
30-44	5.4	2.7	2.7	4.6	2.2	2.4	3.6	1.6	2.0	2.8	1.1	1.7
45-59	5.6	2.9	2.7	5.7	2.9	2.8	5.8	2.9	2.9	5.7	2.8	2.9
60-74	4.4	2.1	2.3	4.7	2.3	2.4	5.1	2.5	2.6	5.2	2.6	2.6
75 & over	2.5	0.9	1.7	2.6	0.9	1.7	2.7	1.0	1.7	3.0	1.1	1.9

Table 2 continued

Age group	2002			2008			2013			2018		
	Persons	Males	Females	Persons	Males	Females	Persons	Males	Females	Persons	Males	Females
Falkirk												
All Ages	145.6	70.1	75.4	147.4	72.0	75.4	149.0	73.5	75.5	150.6	74.9	75.6
0-4	8.0	4.1	3.9	7.2	3.8	3.4	7.0	3.6	3.3	7.0	3.7	3.3
5-14	18.3	9.3	9.0	17.1	8.9	8.2	15.8	8.3	7.5	14.9	7.9	7.0
15-29	25.9	13.0	12.9	27.0	14.0	13.0	27.8	14.7	13.0	27.5	14.6	12.8
30-44	34.1	16.6	17.5	32.2	15.6	16.7	29.5	14.5	15.0	28.0	14.2	13.8
45-59	28.8	14.1	14.7	30.7	15.0	15.7	33.1	16.2	16.9	34.6	16.9	17.6
60-74	20.5	9.5	11.0	22.6	10.7	11.8	24.1	11.4	12.7	25.4	12.0	13.3
75 & over	10.0	3.6	6.4	10.7	4.1	6.7	11.9	4.7	7.1	13.3	5.5	7.8
Fife												
All Ages	350.7	168.1	182.6	352.7	171.2	181.5	354.1	173.3	180.8	355.3	175.1	180.3
0-4	18.8	9.6	9.2	17.0	8.8	8.2	16.6	8.6	8.0	16.8	8.7	8.1
5-14	44.1	22.5	21.7	40.1	20.6	19.6	37.1	19.3	17.8	35.2	18.3	16.9
15-29	62.9	31.3	31.6	66.3	34.0	32.3	65.7	34.2	31.5	62.1	32.5	29.6
30-44	78.4	37.9	40.4	70.4	34.3	36.1	64.4	31.7	32.6	62.5	31.8	30.7
45-59	70.6	34.5	36.1	73.5	35.8	37.7	77.7	37.9	39.8	78.1	38.1	40.0
60-74	49.3	22.9	26.4	56.7	26.8	29.9	61.2	29.0	32.2	65.4	31.0	34.5
75 & over	26.6	9.5	17.1	28.6	10.9	17.7	31.5	12.7	18.8	35.2	14.7	20.5
Glasgow City												
All Ages	577.4	273.6	303.7	561.0	259.9	301.1	552.0	249.6	302.4	546.9	241.1	305.8
0-4	30.6	15.8	14.9	30.4	15.4	15.0	31.9	16.2	15.8	33.7	17.1	16.6
5-14	65.7	33.8	32.0	56.1	28.3	27.8	52.5	25.8	26.6	54.0	26.4	27.6
15-29	132.7	64.7	68.1	137.7	63.9	73.8	130.8	58.2	72.6	119.5	51.3	68.2
30-44	137.0	65.8	71.3	123.1	57.4	65.7	116.9	52.6	64.3	116.3	49.4	66.9
45-59	95.5	47.5	47.9	105.5	50.7	54.8	113.1	52.2	60.9	111.8	49.8	62.0
60-74	75.6	33.1	42.5	70.5	31.8	38.7	69.0	31.8	37.2	74.2	34.0	40.2
75 & over	40.1	13.1	27.0	37.7	12.4	25.3	37.7	12.8	24.9	37.3	13.1	24.2
Highland												
All Ages	208.1	101.9	106.2	206.0	101.2	104.7	203.2	100.1	103.1	199.9	98.6	101.3
0-4	11.0	5.8	5.2	9.6	4.9	4.7	8.8	4.5	4.3	8.5	4.4	4.2
5-14	26.3	13.5	12.8	23.7	12.3	11.4	21.2	11.1	10.2	19.4	10.0	9.4
15-29	32.3	16.9	15.3	31.9	17.0	14.9	31.5	16.9	14.6	29.1	15.6	13.5
30-44	45.6	22.0	23.6	39.4	19.0	20.4	33.1	16.3	16.9	30.2	15.5	14.7
45-59	45.6	22.8	22.8	47.7	23.6	24.1	48.8	23.8	24.9	47.2	22.8	24.4
60-74	31.7	15.0	16.7	36.1	17.5	18.6	40.1	19.6	20.5	43.0	21.1	21.9
75 & over	15.6	5.8	9.9	17.7	6.9	10.8	19.7	8.0	11.8	22.5	9.3	13.2
Inverclyde												
All Ages	83.6	39.8	43.8	79.9	37.8	42.1	77.0	36.3	40.7	74.2	34.7	39.5
0-4	4.3	2.2	2.1	3.8	2.0	1.8	3.6	1.9	1.7	3.5	1.8	1.7
5-14	10.5	5.3	5.2	9.1	4.7	4.4	8.1	4.3	3.8	7.5	4.0	3.5
15-29	14.9	7.5	7.4	14.7	7.3	7.4	14.1	7.0	7.1	12.7	6.4	6.2
30-44	18.9	9.0	9.9	15.2	7.0	8.2	12.4	5.6	6.8	11.1	5.0	6.1
45-59	16.7	8.2	8.5	17.8	8.5	9.2	18.6	8.7	9.9	17.8	8.1	9.7
60-74	12.2	5.5	6.7	12.9	6.0	7.0	13.6	6.3	7.3	14.4	6.6	7.8
75 & over	6.2	2.1	4.1	6.3	2.2	4.1	6.7	2.4	4.2	7.2	2.7	4.5
Midlothian												
All Ages	80.5	38.4	42.1	82.3	39.9	42.4	84.0	41.2	42.8	85.8	42.5	43.3
0-4	4.7	2.4	2.4	4.5	2.3	2.2	4.5	2.3	2.2	4.7	2.4	2.3
5-14	10.8	5.5	5.3	10.2	5.2	5.0	9.8	5.0	4.8	9.6	5.0	4.6
15-29	13.1	6.4	6.6	14.3	7.6	6.8	15.0	8.1	7.0	14.8	7.9	6.9
30-44	18.7	8.8	9.9	17.4	8.2	9.2	16.4	8.0	8.5	16.6	8.3	8.2
45-59	16.8	8.2	8.7	17.5	8.5	9.0	18.2	8.8	9.4	18.5	9.0	9.5
60-74	11.2	5.2	6.0	12.5	5.9	6.7	13.6	6.4	7.2	14.5	6.9	7.6
75 & over	5.3	2.0	3.3	5.8	2.3	3.5	6.4	2.6	3.8	7.1	2.9	4.2
Moray												
All Ages	86.7	43.7	43.1	84.4	42.2	42.2	82.1	40.9	41.3	80.0	39.6	40.4
0-4	4.7	2.4	2.2	4.0	2.0	2.0	3.7	1.9	1.8	3.7	1.9	1.8
5-14	11.3	5.8	5.5	9.8	5.0	4.7	8.4	4.3	4.1	7.6	3.9	3.7
15-29	14.5	8.0	6.4	15.0	8.3	6.7	15.8	8.6	7.1	14.7	8.1	6.6
30-44	20.3	10.6	9.7	17.2	8.9	8.4	13.9	7.3	6.6	12.3	6.6	5.7
45-59	17.0	8.4	8.6	17.5	8.6	8.9	17.9	8.7	9.2	17.5	8.3	9.2
60-74	12.6	6.0	6.7	13.8	6.5	7.3	14.6	6.8	7.7	15.3	7.1	8.2
75 & over	6.4	2.4	4.0	7.1	2.8	4.3	8.0	3.3	4.7	8.8	3.7	5.1

(thousands)

Age group	2002			2008			2013			2018		
	Persons	Males	Females	Persons	Males	Females	Persons	Males	Females	Persons	Males	Females
North Ayrshire												
All Ages	135.7	64.1	71.6	132.4	62.5	69.9	129.5	61.1	68.5	126.3	59.4	66.9
0-4	7.1	3.5	3.5	6.5	3.3	3.2	6.0	3.0	3.0	5.8	2.9	2.9
5-14	17.8	9.1	8.7	14.9	7.4	7.5	13.1	6.4	6.7	12.2	6.0	6.2
15-29	23.1	11.3	11.8	23.4	11.8	11.6	22.9	11.7	11.2	20.5	10.5	10.0
30-44	29.8	13.9	15.9	25.4	11.8	13.6	21.3	10.0	11.3	19.5	9.4	10.1
45-59	27.8	13.5	14.4	28.6	13.4	15.1	29.5	13.5	15.9	28.5	12.9	15.6
60-74	20.3	9.3	11.0	23.0	10.8	12.2	24.7	11.6	13.1	26.0	12.1	13.9
75 & over	9.8	3.4	6.3	10.7	4.0	6.7	12.0	4.7	7.3	13.7	5.6	8.2
North Lanarkshire												
All Ages	321.4	154.0	167.3	319.1	152.6	166.5	316.9	151.2	165.6	314.4	149.6	164.7
0-4	19.0	9.6	9.3	17.4	8.9	8.5	16.7	8.6	8.1	16.6	8.5	8.1
5-14	41.7	21.5	20.2	39.1	19.9	19.2	36.6	18.6	18.0	34.6	17.6	17.0
15-29	61.3	30.6	30.7	61.8	31.4	30.4	60.4	30.7	29.7	57.6	29.3	28.3
30-44	76.4	36.5	39.9	68.6	32.5	36.1	61.6	29.3	32.2	57.3	27.8	29.6
45-59	61.5	29.8	31.7	65.4	31.1	34.3	70.0	32.9	37.1	70.6	32.8	37.8
60-74	43.0	19.6	23.4	46.5	21.4	25.1	48.8	22.5	26.3	52.0	23.7	28.2
75 & over	18.5	6.4	12.0	20.2	7.4	12.8	22.8	8.6	14.2	25.6	10.0	15.7
Orkney Islands												
All Ages	19.2	9.5	9.7	18.5	9.1	9.5	17.9	8.7	9.2	17.2	8.3	8.9
0-4	0.9	0.5	0.4	0.7	0.4	0.4	0.6	0.3	0.3	0.6	0.3	0.3
5-14	2.6	1.3	1.3	2.2	1.2	1.1	1.9	1.0	0.9	1.6	0.9	0.8
15-29	2.8	1.4	1.4	2.6	1.4	1.2	2.4	1.3	1.1	2.2	1.2	1.0
30-44	4.2	2.1	2.1	3.7	1.8	1.9	2.9	1.3	1.6	2.3	1.0	1.3
45-59	4.2	2.1	2.1	4.4	2.2	2.2	4.6	2.3	2.3	4.7	2.3	2.4
60-74	3.0	1.5	1.6	3.4	1.6	1.8	3.6	1.7	1.9	3.7	1.8	1.9
75 & over	1.5	0.6	0.9	1.6	0.6	1.0	1.7	0.7	1.1	2.1	0.8	1.3
Perth & Kinross												
All Ages	135.2	65.3	69.8	136.4	65.9	70.5	137.2	66.2	71.0	137.9	66.4	71.5
0-4	7.0	3.6	3.4	6.5	3.2	3.2	6.2	3.1	3.1	6.3	3.2	3.1
5-14	16.5	8.5	8.0	15.6	8.0	7.7	14.8	7.5	7.3	14.1	7.1	7.0
15-29	20.4	10.6	9.8	20.8	10.8	10.0	21.1	10.8	10.2	20.4	10.6	9.8
30-44	29.4	14.3	15.1	26.2	12.6	13.6	22.8	11.0	11.8	21.5	10.4	11.1
45-59	28.7	14.1	14.6	30.1	14.6	15.5	31.6	15.3	16.3	31.4	15.0	16.4
60-74	21.3	10.0	11.3	24.1	11.4	12.6	26.3	12.5	13.8	28.1	13.3	14.7
75 & over	11.9	4.4	7.5	13.2	5.2	8.0	14.5	6.0	8.5	16.2	6.9	9.3
Renfrewshire												
All Ages	171.9	82.1	89.8	166.8	79.4	87.4	162.4	77.1	85.3	157.9	74.6	83.2
0-4	9.3	4.7	4.6	8.6	4.4	4.2	8.0	4.1	3.9	7.9	4.0	3.8
5-14	21.3	10.9	10.3	19.1	9.6	9.5	17.6	8.7	8.9	16.4	8.2	8.2
15-29	30.1	15.1	15.1	30.4	15.4	15.1	29.5	15.0	14.6	27.4	13.6	13.7
30-44	41.0	19.5	21.5	33.8	15.7	18.0	28.0	13.0	15.0	25.2	11.9	13.3
45-59	34.2	16.6	17.6	36.5	17.6	18.9	38.5	18.3	20.2	37.6	17.6	20.0
60-74	24.5	11.2	13.3	26.1	12.1	14.1	27.2	12.7	14.5	28.6	13.3	15.3
75 & over	11.4	4.0	7.4	12.3	4.6	7.7	13.6	5.3	8.3	14.9	5.9	8.9
Scottish Borders												
All Ages	107.4	51.8	55.6	108.5	53.5	55.0	109.1	54.5	54.6	109.4	55.4	54.1
0-4	5.5	2.8	2.8	5.1	2.6	2.4	4.7	2.4	2.2	4.6	2.4	2.2
5-14	13.3	6.8	6.5	12.4	6.4	6.0	11.7	6.2	5.5	10.8	5.8	5.1
15-29	15.1	7.6	7.5	15.7	8.4	7.4	16.3	8.9	7.4	16.0	8.8	7.2
30-44	23.9	11.7	12.2	20.8	10.4	10.5	17.7	9.0	8.7	16.1	8.6	7.6
45-59	22.8	11.3	11.5	24.4	12.0	12.4	25.9	12.8	13.1	26.0	12.9	13.1
60-74	17.1	8.1	9.1	19.6	9.4	10.2	21.4	10.4	11.0	23.1	11.3	11.8
75 & over	9.5	3.6	6.0	10.4	4.2	6.2	11.4	4.8	6.6	12.8	5.6	7.2
Shetland Islands												
All Ages	21.9	11.0	10.9	22.0	11.0	11.0	22.1	11.1	11.0	22.2	11.2	11.0
0-4	1.3	0.6	0.6	1.2	0.6	0.6	1.2	0.6	0.6	1.2	0.6	0.6
5-14	3.1	1.6	1.5	2.7	1.3	1.3	2.5	1.2	1.2	2.5	1.2	1.2
15-29	3.8	2.0	1.8	3.9	2.1	1.8	3.9	2.0	1.9	3.7	1.8	1.8
30-44	4.9	2.5	2.4	4.6	2.3	2.3	4.2	2.2	2.0	4.1	2.2	1.9
45-59	4.6	2.4	2.2	4.7	2.4	2.3	4.8	2.4	2.4	4.8	2.4	2.4
60-74	2.8	1.4	1.4	3.3	1.7	1.6	3.7	1.9	1.8	3.8	2.0	1.9
75 & over	1.5	0.5	1.0	1.6	0.6	1.0	1.8	0.7	1.1	2.1	0.9	1.2

Table 2 continued

Age group	2002			2008			2013			2018		
	Persons	Males	Females	Persons	Males	Females	Persons	Males	Females	Persons	Males	Females
South Ayrshire												
All Ages	111.7	53.2	58.5	109.1	52.0	57.0	107.0	51.1	55.9	104.9	50.0	54.8
0-4	5.3	2.8	2.6	4.8	2.4	2.3	4.6	2.4	2.2	4.6	2.4	2.3
5-14	13.1	6.6	6.5	11.7	5.9	5.8	10.7	5.5	5.2	10.1	5.1	5.0
15-29	17.5	8.8	8.6	18.0	9.2	8.8	17.8	9.0	8.8	16.4	8.4	8.0
30-44	23.8	11.4	12.4	19.8	9.4	10.3	16.9	8.1	8.8	15.8	7.6	8.3
45-59	23.7	11.5	12.2	24.0	11.5	12.5	24.2	11.5	12.8	23.0	10.9	12.1
60-74	18.2	8.4	9.8	19.8	9.3	10.5	20.7	9.7	10.9	21.7	10.1	11.5
75 & over	10.1	3.6	6.5	11.0	4.2	6.7	12.1	4.9	7.2	13.2	5.5	7.6
South Lanarkshire												
All Ages	302.1	144.3	157.9	299.6	142.8	156.8	297.1	141.3	155.9	294.5	139.5	155.0
0-4	16.4	8.3	8.1	15.0	7.6	7.4	14.6	7.4	7.2	14.7	7.5	7.2
5-14	38.4	19.8	18.6	34.7	17.4	17.2	31.7	15.9	15.9	30.1	15.1	15.0
15-29	53.8	27.1	26.8	54.8	27.9	26.9	53.5	27.0	26.5	49.8	24.7	25.1
30-44	70.1	33.4	36.7	61.4	28.8	32.5	54.8	25.9	28.9	52.0	24.9	27.1
45-59	60.8	29.4	31.4	65.2	31.4	33.7	68.6	32.5	36.1	67.4	31.6	35.8
60-74	42.7	19.3	23.4	45.9	21.1	24.8	48.6	22.7	25.9	52.4	24.6	27.8
75 & over	19.9	7.0	12.9	22.7	8.5	14.2	25.3	9.9	15.4	28.2	11.2	16.9
Stirling												
All Ages	86.2	41.1	45.0	88.8	43.1	45.7	91.3	44.8	46.4	94.0	46.7	47.4
0-4	4.7	2.4	2.3	4.3	2.3	2.1	4.5	2.4	2.1	4.9	2.5	2.3
5-14	10.8	5.5	5.3	10.2	5.4	4.8	9.7	5.3	4.4	9.6	5.3	4.4
15-29	16.1	7.8	8.3	18.7	9.3	9.4	19.3	9.5	9.8	18.8	9.4	9.4
30-44	18.9	9.0	9.9	16.9	8.1	8.9	16.1	8.0	8.1	17.0	8.7	8.3
45-59	17.3	8.5	8.8	18.1	8.9	9.2	19.2	9.3	9.8	19.4	9.4	10.0
60-74	12.2	5.6	6.5	13.8	6.6	7.2	14.8	7.2	7.7	15.7	7.6	8.1
75 & over	6.2	2.2	3.9	6.8	2.6	4.2	7.7	3.2	4.5	8.7	3.7	5.0
West Dunbartonshire												
All Ages	92.8	43.9	48.9	89.7	42.0	47.7	87.6	40.6	47.0	85.6	39.2	46.4
0-4	5.0	2.5	2.5	4.6	2.3	2.3	4.5	2.3	2.3	4.5	2.3	2.3
5-14	11.9	6.2	5.7	10.3	5.2	5.1	9.4	4.6	4.8	9.0	4.4	4.6
15-29	17.2	8.5	8.7	17.5	8.7	8.8	16.5	8.3	8.2	14.7	7.2	7.5
30-44	21.4	10.2	11.2	18.1	8.3	9.8	16.0	7.1	8.9	15.4	6.8	8.5
45-59	18.1	8.8	9.3	19.2	9.2	10.0	20.0	9.3	10.7	19.0	8.6	10.4
60-74	12.8	5.7	7.2	13.6	6.2	7.4	14.5	6.8	7.8	15.9	7.3	8.6
75 & over	6.5	2.1	4.4	6.5	2.2	4.3	6.7	2.4	4.3	7.1	2.6	4.5
West Lothian												
All Ages	160.0	77.3	82.7	168.8	82.7	86.1	176.3	87.1	89.1	183.6	91.4	92.2
0-4	10.3	5.2	5.1	9.6	5.0	4.7	9.7	5.0	4.7	10.2	5.2	4.9
5-14	22.1	11.3	10.8	21.8	11.1	10.7	20.9	10.8	10.1	20.4	10.6	9.8
15-29	28.9	14.2	14.7	31.5	16.1	15.4	33.0	17.1	15.9	33.3	17.3	16.0
30-44	40.9	19.7	21.3	39.9	19.5	20.4	38.1	19.0	19.1	37.9	19.5	18.4
45-59	31.4	15.3	16.0	34.7	16.9	17.8	39.2	19.1	20.1	42.2	20.7	21.5
60-74	18.9	8.9	10.0	22.7	10.8	11.8	25.0	11.9	13.2	27.3	12.9	14.4
75 & over	7.6	2.7	4.8	8.7	3.3	5.3	10.3	4.3	6.0	12.4	5.3	7.2
Health board areas												
Argyll & Clyde												
All Ages	418.8	201.7	217.0	407.4	195.6	211.8	398.6	190.9	207.7	390.0	186.1	203.9
0-4	21.8	11.1	10.7	19.7	10.1	9.6	18.9	9.6	9.2	18.9	9.7	9.2
5-14	52.5	26.9	25.6	45.8	23.2	22.6	41.1	20.6	20.5	38.6	19.5	19.1
15-29	71.7	36.9	34.8	74.1	38.4	35.7	72.8	37.8	35.0	66.4	34.2	32.2
30-44	96.2	46.5	49.7	80.4	38.1	42.4	68.5	32.6	36.0	64.5	31.3	33.2
45-59	84.9	41.7	43.2	89.3	43.3	46.0	92.9	44.2	48.7	89.9	41.9	48.0
60-74	61.7	28.2	33.5	66.4	30.9	35.4	69.7	32.7	37.1	73.5	34.4	39.1
75 & over	29.8	10.4	19.4	31.6	11.6	20.0	34.7	13.3	21.3	38.2	15.1	23.0
Ayrshire & Arran												
All Ages	367.1	174.9	192.2	357.9	170.6	187.3	349.9	166.8	183.1	341.5	162.6	178.9
0-4	18.7	9.5	9.2	16.9	8.6	8.3	15.9	8.1	7.8	15.6	7.9	7.6
5-14	46.5	23.8	22.7	40.0	20.3	19.7	35.9	18.2	17.8	33.5	17.0	16.5
15-29	60.9	30.4	30.6	61.9	31.3	30.5	60.5	30.9	29.6	54.9	28.2	26.7
30-44	80.9	38.5	42.5	69.2	32.7	36.5	58.3	27.7	30.7	53.4	25.5	27.8
45-59	75.8	37.0	38.8	77.3	36.9	40.3	79.5	37.3	42.2	77.5	36.1	41.4
60-74	56.0	25.8	30.2	61.9	29.1	32.8	65.6	31.0	34.6	68.5	32.2	36.3
75 & over	28.3	10.1	18.3	30.8	11.7	19.1	34.1	13.6	20.5	38.0	15.7	22.4

(thousands)

Age group	2002			2008			2013			2018		
	Persons	Males	Females	Persons	Males	Females	Persons	Males	Females	Persons	Males	Females
Borders - see Scottish Borders Council Area												
Dumfries & Galloway - see Dumfries & Galloway Council Area												
Fife - see Fife Council Area												
Forth Valley												
All Ages	279.4	134.3	145.1	283.4	138.3	145.1	286.5	141.4	145.1	289.7	144.3	145.4
0-4	15.3	7.9	7.5	13.8	7.2	6.6	13.5	7.0	6.5	13.8	7.2	6.6
5-14	35.5	18.0	17.5	33.1	17.2	15.9	30.7	16.2	14.5	29.2	15.5	13.8
15-29	50.3	25.0	25.3	53.8	27.7	26.2	55.3	28.8	26.6	54.0	28.3	25.7
30-44	64.0	30.9	33.1	58.8	28.4	30.4	53.5	26.6	27.0	52.0	26.8	25.2
45-59	56.0	27.5	28.5	58.9	28.9	30.0	62.8	30.8	32.0	64.5	31.7	32.8
60-74	39.1	18.1	20.9	43.9	20.9	23.0	47.2	22.6	24.6	49.7	23.8	25.9
75 & over	19.2	6.8	12.4	20.9	8.0	13.0	23.5	9.5	14.0	26.5	11.1	15.4
Grampian												
All Ages	523.3	258.9	264.4	511.8	251.3	260.5	501.0	244.7	256.3	489.3	237.5	251.8
0-4	27.3	14.3	13.1	24.5	12.5	12.0	22.8	11.7	11.2	22.3	11.4	10.9
5-14	64.1	32.9	31.2	56.8	29.3	27.5	51.3	26.2	25.1	47.4	24.0	23.4
15-29	98.5	50.9	47.6	95.3	48.6	46.7	91.7	46.3	45.4	85.8	43.3	42.5
30-44	121.9	61.2	60.7	105.8	52.2	53.6	90.9	44.8	46.1	79.6	39.2	40.4
45-59	105.9	53.6	52.3	111.5	55.7	55.7	114.4	56.3	58.1	111.2	53.5	57.7
60-74	69.4	32.8	36.6	77.6	37.4	40.2	85.2	41.3	43.9	93.3	45.3	48.1
75 & over	36.1	13.1	23.0	40.3	15.6	24.8	44.6	18.1	26.5	49.6	20.8	28.8
Greater Glasgow												
All Ages	866.1	410.5	455.6	846.6	392.4	454.2	835.5	378.3	457.2	829.0	366.2	462.7
0-4	46.5	23.9	22.5	44.9	22.6	22.3	46.9	23.6	23.2	49.3	24.9	24.4
5-14	103.8	53.3	50.5	89.9	45.1	44.7	83.2	40.6	42.6	84.4	40.7	43.6
15-29	181.9	89.4	92.5	189.1	89.6	99.5	180.7	82.7	98.1	165.6	73.2	92.4
30-44	201.5	95.8	105.7	178.6	82.0	96.7	168.0	74.4	93.6	166.6	70.4	96.2
45-59	154.6	75.9	78.7	168.2	80.1	88.1	177.7	81.5	96.2	173.1	76.4	96.7
60-74	116.8	51.8	65.0	114.7	52.0	62.8	115.6	52.9	62.6	124.6	56.7	67.9
75 & over	61.0	20.3	40.7	61.1	21.0	40.1	63.5	22.7	40.8	65.4	24.0	41.5
Highland - see Highland Council Area												
Lanarkshire												
All Ages	552.9	265.3	287.6	548.6	263.3	285.3	544.5	261.4	283.1	539.8	259.0	280.8
0-4	31.5	16.0	15.5	28.7	14.7	14.0	27.5	14.1	13.5	27.5	14.1	13.4
5-14	71.4	36.8	34.6	65.7	33.3	32.4	60.7	30.7	30.0	57.2	29.0	28.2
15-29	102.3	51.3	51.0	104.0	53.2	50.8	102.0	52.2	49.8	96.2	48.9	47.3
30-44	130.4	62.5	67.9	115.2	54.9	60.3	102.5	49.4	53.2	96.4	47.4	49.0
45-59	108.1	52.4	55.6	115.4	55.4	59.9	122.9	58.5	64.5	122.5	57.8	64.7
60-74	75.9	34.5	41.4	82.0	37.8	44.2	86.3	40.1	46.2	92.3	42.8	49.5
75 & over	33.5	11.9	21.6	37.6	14.0	23.6	42.4	16.4	26.0	47.7	18.9	28.8
Lothian												
All Ages	779.1	373.8	405.3	797.8	389.3	408.4	815.3	402.5	412.8	834.0	415.7	418.3
0-4	42.0	21.3	20.7	39.8	20.5	19.3	40.4	20.8	19.6	41.7	21.5	20.2
5-14	91.0	46.7	44.3	84.8	43.6	41.2	80.1	41.5	38.6	79.1	41.2	38.0
15-29	161.8	79.6	82.2	172.7	87.8	84.9	172.8	88.9	83.9	169.0	87.4	81.7
30-44	186.9	90.7	96.2	179.9	89.1	90.8	177.4	90.1	87.4	179.0	93.4	85.5
45-59	145.6	71.4	74.1	157.1	76.8	80.2	169.1	82.8	86.3	175.5	86.2	89.3
60-74	98.4	45.2	53.2	106.8	50.1	56.7	114.8	54.3	60.5	124.4	59.3	65.0
75 & over	53.4	18.9	34.6	56.7	21.4	35.3	60.8	24.2	36.6	65.3	26.8	38.6
Orkney - see Orkney Islands Council Area												
Shetland - see Shetland Islands Council Area												
Tayside												
All Ages	387.4	186.0	201.4	377.2	180.9	196.3	368.6	176.7	191.8	359.6	172.2	187.4
0-4	19.6	10.1	9.5	17.7	9.0	8.7	16.6	8.5	8.2	16.2	8.3	8.0
5-14	46.0	23.6	22.4	41.3	21.0	20.3	37.7	19.1	18.6	35.2	17.8	17.4
15-29	68.9	34.9	33.9	68.0	34.8	33.2	65.0	33.2	31.8	60.0	30.7	29.3
30-44	82.8	39.7	43.1	70.1	33.1	36.9	61.0	29.1	31.9	55.9	27.0	28.8
45-59	77.8	38.2	39.5	80.4	38.9	41.5	82.2	39.3	42.9	79.7	37.5	42.2
60-74	59.5	27.6	31.9	64.2	30.4	33.8	67.9	32.3	35.6	71.2	33.8	37.5
75 & over	32.8	11.9	20.9	35.5	13.7	21.8	38.2	15.4	22.9	41.5	17.2	24.3
Western Isles - see Eilean Siar												

Table 3 Projected percentage changes in population from base year, by broad age group; council and health board areas

Area	All ages			0-4			5-14			15-29		
	2008	2013	2018	2008	2013	2018	2008	2013	2018	2008	2013	2018
SCOTLAND	-1.0	-1.7	-2.4	-8.2	-10.3	-9.5	-10.5	-17.9	-21.6	2.8	0.7	-5.5
Council areas												
Aberdeen City	-4.4	-8.1	-11.9	-7.1	-13.1	-17.8	-14.5	-22.1	-27.7	-7.6	-16.9	-22.6
Aberdeenshire	0.1	-0.3	-1.1	-11.5	-17.4	-18.2	-8.7	-16.5	-22.7	-0.2	0.3	-5.5
Angus	-3.0	-5.8	-9.2	-16.0	-26.2	-33.0	-7.9	-18.3	-28.1	-8.1	-10.2	-16.7
Argyll & Bute	-1.1	-1.5	-1.7	-13.8	-12.1	-5.8	-16.9	-29.3	-32.4	12.3	18.1	7.6
Clackmannanshire	-1.7	-3.6	-5.9	-12.0	-22.9	-27.5	-10.1	-19.0	-27.5	-1.4	0.0	-5.5
Dumfries & Galloway	-2.3	-4.6	-7.2	-16.0	-23.3	-25.1	-15.8	-29.6	-36.7	2.3	2.3	-10.3
Dundee City	-5.8	-10.1	-14.3	-7.4	-10.8	-12.9	-16.8	-25.7	-29.2	0.3	-9.0	-19.1
East Ayrshire	-2.8	-5.3	-7.8	-10.1	-16.1	-18.2	-14.1	-21.8	-27.3	0.3	-2.7	-12.0
East Dunbartonshire	-2.3	-4.1	-5.8	-10.8	-7.3	-3.0	-16.3	-27.4	-28.4	6.0	1.0	-10.4
East Lothian	4.1	7.7	11.6	-9.8	-8.1	-0.4	-4.4	-12.3	-14.7	17.3	31.1	31.9
East Renfrewshire	2.0	3.8	5.8	-7.9	-4.2	2.5	-7.4	-14.6	-15.0	12.3	16.3	12.1
Edinburgh, City of	0.9	2.1	3.4	-3.3	-1.4	-0.2	-10.6	-15.8	-15.8	4.4	0.7	-3.0
Eilean Siar	-6.1	-11.4	-17.1	-14.5	-26.1	-38.5	-17.3	-28.6	-37.8	-16.1	-26.5	-40.3
Falkirk	1.3	2.4	3.5	-10.5	-13.1	-12.4	-6.3	-13.7	-18.5	4.1	7.2	6.0
Fife	0.6	1.0	1.3	-9.6	-11.5	-10.7	-9.0	-16.0	-20.2	5.4	4.3	-1.3
Glasgow City	-2.8	-4.4	-5.3	-0.9	4.2	10.0	-14.7	-20.2	-17.8	3.8	-1.4	-10.0
Highland	-1.1	-2.4	-4.0	-12.6	-19.7	-22.1	-10.1	-19.3	-26.5	-1.3	-2.4	-9.8
Inverclyde	-4.4	-7.9	-11.3	-10.7	-16.9	-18.3	-13.1	-22.9	-29.0	-1.0	-5.2	-14.8
Midlothian	2.2	4.3	6.6	-4.7	-4.9	-1.3	-5.5	-9.3	-10.8	9.9	15.1	13.6
Moray	-2.7	-5.3	-7.8	-14.1	-21.1	-19.7	-13.2	-25.5	-32.6	3.7	9.0	1.5
North Ayrshire	-2.4	-4.5	-6.9	-8.8	-15.2	-17.7	-16.2	-26.5	-31.8	1.4	-0.7	-11.0
North Lanarkshire	-0.7	-1.4	-2.2	-8.1	-12.1	-12.6	-6.2	-12.1	-17.0	0.7	-1.5	-6.0
Orkney Islands	-3.5	-6.8	-10.5	-18.0	-29.0	-35.9	-14.2	-27.4	-36.5	-7.8	-12.9	-23.3
Perth & Kinross	0.9	1.5	2.0	-7.2	-10.9	-9.3	-5.5	-10.5	-14.6	2.1	3.5	0.0
Renfrewshire	-3.0	-5.5	-8.2	-8.0	-14.1	-15.4	-10.1	-17.2	-23.0	0.9	-2.1	-9.2
Scottish Borders	1.0	1.6	1.9	-8.7	-15.6	-17.3	-6.4	-12.1	-18.7	4.1	7.7	5.9
Shetland Islands	0.2	0.8	1.2	-6.0	-5.7	-3.8	-13.5	-19.9	-20.8	2.9	3.7	-3.3
South Ayrshire	-2.3	-4.2	-6.1	-10.5	-13.6	-13.0	-10.7	-18.5	-23.1	3.2	1.7	-6.0
South Lanarkshire	-0.8	-1.6	-2.5	-8.9	-11.4	-10.8	-9.7	-17.4	-21.7	1.9	-0.5	-7.5
Stirling	3.1	5.9	9.1	-7.7	-3.7	3.8	-5.5	-10.4	-10.7	15.9	19.7	16.3
West Dunbartonshire	-3.3	-5.6	-7.8	-6.9	-8.6	-8.5	-13.9	-21.4	-24.3	1.6	-4.0	-14.6
West Lothian	5.6	10.2	14.8	-7.0	-6.3	-1.8	-1.0	-5.2	-7.6	9.0	14.3	15.3
Health board areas												
Argyll & Clyde	-2.7	-4.8	-6.9	-9.7	-13.7	-13.3	-12.8	-21.7	-26.5	3.3	1.5	-7.4
Ayrshire & Arran	-2.5	-4.7	-7.0	-9.7	-15.1	-16.5	-14.0	-22.7	-27.8	1.5	-0.7	-9.9
Borders	1.0	1.6	1.9	-8.7	-15.6	-17.3	-6.4	-12.1	-18.7	4.1	7.7	5.9
Dumfries & Galloway	-2.3	-4.6	-7.2	-16.0	-23.3	-25.1	-15.8	-29.6	-36.7	2.3	2.3	-10.3
Fife	0.6	1.0	1.3	-9.6	-11.4	-10.7	-9.0	-16.0	-20.1	5.4	4.3	-1.3
Forth Valley	1.4	2.6	3.7	-9.9	-11.9	-10.0	-6.7	-13.6	-17.7	7.0	10.1	7.5
Grampian	-2.2	-4.3	-6.5	-10.3	-16.5	-18.3	-11.5	-20.0	-26.1	-3.3	-6.9	-12.9
Greater Glasgow	-2.3	-3.5	-4.3	-3.4	0.9	6.1	-13.5	-19.9	-18.8	3.9	-0.6	-9.0
Highland	-1.1	-2.4	-4.0	-12.6	-19.7	-22.1	-10.1	-19.3	-26.5	-1.3	-2.4	-9.8
Lanarkshire	-0.8	-1.5	-2.4	-8.8	-12.6	-12.7	-8.0	-14.9	-19.9	1.7	-0.3	-5.9
Lothian	2.4	4.6	7.0	-5.1	-3.8	-0.7	-6.8	-12.0	-13.0	6.7	6.8	4.5
Orkney	-3.5	-6.8	-10.5	-18.0	-29.0	-35.9	-14.2	-27.4	-36.5	-7.8	-12.9	-23.3
Shetland	0.2	0.8	1.2	-6.0	-5.7	-3.8	-13.5	-19.9	-20.8	2.9	3.7	-3.3
Tayside	-2.6	-4.9	-7.2	-9.8	-15.2	-17.3	-10.2	-18.1	-23.6	-1.2	-5.6	-12.8
Western Isles	-6.1	-11.4	-17.1	-14.5	-26.1	-38.5	-17.3	-28.6	-37.8	-16.1	-26.5	-40.3

(percentages)

30-44			45-59			60-74			75 & over			Area
2008	2013	2018	2008	2013	2018	2008	2013	2018	2008	2013	2018	
-11.3	-20.0	-23.7	5.8	11.0	9.9	8.3	15.1	23.0	7.6	17.3	28.7	SCOTLAND
												Council areas
-11.7	-20.1	-32.3	5.4	7.1	5.0	2.3	8.7	17.9	7.4	13.1	18.4	Aberdeen City
-13.8	-27.9	-35.0	6.0	9.7	5.7	21.6	38.8	55.4	16.0	33.5	55.6	Aberdeenshire
-14.6	-29.6	-40.3	1.5	1.3	-1.3	12.8	22.6	28.5	11.2	23.5	37.7	Angus
-11.5	-20.1	-17.2	-0.1	0.4	-3.5	9.6	14.8	17.5	8.6	19.6	34.4	Argyll & Bute
-12.8	-28.3	-36.5	1.3	5.5	5.5	18.3	28.3	33.8	12.3	28.4	47.2	Clackmannanshire
-19.1	-35.5	-42.3	3.6	5.7	1.4	12.1	21.0	26.3	14.3	28.4	46.8	Dumfries & Galloway
-20.3	-27.6	-31.8	3.6	4.7	-2.0	-1.3	-2.0	0.7	2.6	5.7	7.7	Dundee City
-12.1	-26.3	-33.8	1.9	6.6	7.1	9.3	15.3	19.2	7.2	17.8	30.5	East Ayrshire
-17.4	-24.4	-24.3	3.4	3.7	-5.4	8.3	12.0	19.0	18.9	37.0	51.2	East Dunbartonshire
-6.7	-13.8	-12.9	9.5	19.8	23.9	10.7	19.5	31.7	10.3	20.9	32.2	East Lothian
-13.8	-20.6	-19.1	9.7	16.5	12.8	10.7	18.2	31.1	17.2	32.0	45.3	East Renfrewshire
-3.2	-1.5	-0.1	7.3	13.5	16.4	3.2	9.4	18.2	2.7	5.6	8.6	Edinburgh, City of
-14.1	-32.9	-48.9	2.0	2.7	0.8	8.1	16.0	20.3	1.9	8.7	19.0	Eilean Siar
-5.5	-13.5	-17.9	6.6	15.0	20.0	10.0	17.5	23.6	7.4	18.9	33.3	Falkirk
-10.2	-17.9	-20.3	4.1	10.0	10.6	15.1	24.2	32.8	7.6	18.4	32.3	Fife
-10.1	-14.7	-15.1	10.6	18.5	17.1	-6.8	-8.7	-1.8	-6.1	-6.0	-7.0	Glasgow City
-13.7	-27.4	-33.9	4.7	7.0	3.5	13.7	26.2	35.6	13.1	26.3	44.0	Highland
-19.2	-34.2	-41.2	6.6	11.4	7.1	6.1	11.6	17.9	1.0	7.2	16.0	Inverclyde
-6.8	-11.9	-11.2	4.0	8.0	10.0	12.3	21.9	29.7	9.7	22.2	34.7	Midlothian
-15.2	-31.6	-39.4	2.8	5.1	3.0	8.9	15.1	20.6	11.6	25.2	39.1	Moray
-14.7	-28.5	-34.7	2.6	5.8	2.5	13.3	22.1	28.3	9.8	23.2	40.9	North Ayrshire
-10.2	-19.5	-25.0	6.4	13.8	14.8	8.3	13.7	20.9	9.4	23.4	38.9	North Lanarkshire
-13.2	-30.8	-44.4	3.9	10.7	11.8	11.3	20.5	23.8	8.5	18.0	38.5	Orkney Islands
-10.8	-22.4	-27.0	4.7	10.0	9.4	12.9	23.2	31.6	10.8	21.5	35.8	Perth & Kinross
-17.6	-31.8	-38.6	6.7	12.6	9.9	6.3	10.6	16.4	7.7	18.9	30.1	Renfrewshire
-13.0	-25.9	-32.7	6.9	13.3	14.0	14.4	25.1	34.7	9.3	19.6	34.3	Scottish Borders
-6.0	-13.9	-16.4	1.7	4.2	4.0	18.7	31.5	38.2	8.2	21.6	43.4	Shetland Islands
-17.0	-29.1	-33.4	1.4	2.4	-2.8	9.1	13.7	19.1	9.0	20.2	31.0	South Ayrshire
-12.4	-21.7	-25.7	7.2	12.9	10.9	7.5	13.8	22.6	14.0	27.3	41.7	South Lanarkshire
-10.6	-14.8	-10.1	4.7	10.8	12.2	13.0	21.9	28.7	10.3	24.5	40.8	Stirling
-15.3	-25.2	-28.2	5.9	10.4	4.9	6.2	13.5	24.1	0.4	3.1	9.7	West Dunbartonshire
-2.5	-6.9	-7.4	10.6	25.1	34.7	20.2	32.7	44.6	14.5	36.6	64.0	West Lothian
												Health board areas
-16.4	-28.8	-33.0	5.1	9.4	5.8	7.6	13.0	19.2	6.3	16.5	28.2	Argyll & Clyde
-14.5	-27.9	-34.0	2.0	5.0	2.3	10.7	17.2	22.4	8.7	20.5	34.3	Ayrshire & Arran
-13.0	-25.9	-32.7	6.9	13.3	14.0	14.4	25.1	34.7	9.3	19.6	34.3	Borders
-19.1	-35.5	-42.3	3.6	5.7	1.4	12.1	21.0	26.3	14.3	28.4	46.8	Dumfries & Galloway
-10.2	-17.9	-20.2	4.2	10.1	10.7	15.1	24.3	32.8	7.6	18.4	32.3	Fife
-8.2	-16.4	-18.7	5.2	12.1	15.2	12.5	20.8	27.1	9.3	22.4	38.2	Forth Valley
-13.2	-25.4	-34.7	5.3	8.0	5.0	11.7	22.7	34.4	11.7	23.7	37.4	Grampian
-11.3	-16.6	-17.3	8.8	14.9	11.9	-1.7	-1.1	6.7	0.2	4.1	7.3	Greater Glasgow
-13.7	-27.4	-33.9	4.7	7.0	3.5	13.7	26.2	35.6	13.1	26.3	44.0	Highland
-11.6	-21.4	-26.1	6.8	13.8	13.4	8.1	13.8	21.6	12.4	26.8	42.4	Lanarkshire
-3.7	-5.1	-4.2	7.9	16.1	20.5	8.5	16.6	26.3	6.1	13.7	22.3	Lothian
-13.2	-30.8	-44.4	3.9	10.7	11.8	11.3	20.5	23.8	8.5	18.0	38.5	Orkney
-6.0	-13.9	-16.4	1.7	4.2	4.0	18.7	31.5	38.2	8.2	21.6	43.4	Shetland
-15.3	-26.4	-32.5	3.4	5.7	2.4	7.8	14.0	19.7	8.1	16.5	26.3	Tayside
-14.1	-32.9	-48.9	2.0	2.7	0.8	8.1	16.0	20.3	1.9	8.7	19.0	Western Isles

Table 4 Projected births by council and health board area

Area	2002 -2003	2003 -2004	2004 -2005	2005 -2006	2006 -2007	2007 -2008	2008 -2009	2009 -2010
SCOTLAND	51,792	50,764	49,961	49,271	48,750	48,438	48,275	48,207
Council areas								
Aberdeen City	2,081	2,037	1,995	1,955	1,928	1,902	1,881	1,862
Aberdeenshire	2,275	2,224	2,165	2,118	2,076	2,038	2,013	1,989
Angus	995	965	937	903	872	848	827	806
Argyll & Bute	766	761	750	746	741	741	748	757
Clackmannanshire	496	476	464	448	435	424	409	401
Dumfries & Galloway	1,287	1,240	1,204	1,167	1,140	1,115	1,092	1,081
Dundee City	1,490	1,447	1,421	1,401	1,380	1,369	1,363	1,358
East Ayrshire	1,192	1,163	1,133	1,103	1,082	1,067	1,052	1,041
East Dunbartonshire	965	945	942	935	938	949	957	968
East Lothian	945	923	910	901	892	894	901	906
East Renfrewshire	923	909	901	895	901	906	912	928
Edinburgh, City of	4,494	4,452	4,442	4,439	4,453	4,469	4,492	4,515
Eilean Siar	227	217	208	204	199	192	185	181
Falkirk	1,486	1,457	1,432	1,413	1,393	1,385	1,378	1,371
Fife	3,492	3,414	3,364	3,323	3,288	3,271	3,264	3,257
Glasgow City	6,547	6,514	6,511	6,525	6,561	6,616	6,687	6,773
Highland	2,050	1,989	1,936	1,883	1,834	1,802	1,772	1,748
Inverclyde	836	811	791	771	754	743	732	724
Midlothian	901	886	876	866	862	862	863	864
Moray	873	849	825	800	779	760	748	743
North Ayrshire	1,376	1,338	1,302	1,273	1,248	1,225	1,208	1,195
North Lanarkshire	3,677	3,600	3,537	3,472	3,423	3,385	3,362	3,340
Orkney Islands	163	158	149	144	138	135	133	128
Perth & Kinross	1,294	1,264	1,239	1,219	1,198	1,185	1,175	1,169
Renfrewshire	1,858	1,802	1,751	1,713	1,675	1,647	1,629	1,610
Scottish Borders	1,029	993	964	932	908	889	877	866
Shetland Islands	237	232	233	230	228	230	227	231
South Ayrshire	1,005	983	964	943	935	920	916	915
South Lanarkshire	3,117	3,052	2,993	2,949	2,914	2,887	2,875	2,872
Stirling	835	827	820	819	813	823	836	842
West Dunbartonshire	963	946	931	922	910	907	905	903
West Lothian	1,917	1,890	1,871	1,859	1,852	1,852	1,856	1,863
Health board areas								
Argyll & Clyde	4,184	4,085	3,988	3,913	3,843	3,801	3,773	3,753
Ayrshire & Arran	3,573	3,484	3,399	3,319	3,265	3,212	3,176	3,151
Borders	1,029	993	964	932	908	889	877	866
Dumfries & Galloway	1,287	1,240	1,204	1,167	1,140	1,115	1,092	1,081
Fife	3,492	3,414	3,364	3,323	3,288	3,271	3,264	3,257
Forth Valley	2,817	2,760	2,716	2,680	2,641	2,632	2,623	2,614
Grampian	5,229	5,110	4,985	4,873	4,783	4,700	4,642	4,594
Greater Glasgow	9,421	9,339	9,318	9,320	9,359	9,432	9,523	9,639
Highland	2,050	1,989	1,936	1,883	1,834	1,802	1,772	1,748
Lanarkshire	6,047	5,916	5,801	5,695	5,615	5,548	5,511	5,483
Lothian	8,257	8,151	8,099	8,065	8,059	8,077	8,112	8,148
Orkney	163	158	149	144	138	135	133	128
Shetland	237	232	233	230	228	230	227	231
Tayside	3,779	3,676	3,597	3,523	3,450	3,402	3,365	3,333
Western Isles	227	217	208	204	199	192	185	181

(persons)

2010	2011	2012	2013	2014	2015	2016	2,017	Area
-2011	-2012	-2013	-2014	-2015	-2016	-2017	-2,018	
48,209	48,250	48,302	48,374	48,548	48,769	48,895	48,923	SCOTLAND
								Council areas
1,845	1,820	1,801	1,780	1,764	1,751	1,733	1,715	Aberdeen City
1,971	1,956	1,947	1,942	1,946	1,955	1,962	1,969	Aberdeenshire
789	771	752	742	723	713	701	692	Angus
763	771	782	794	805	822	832	841	Argyll & Bute
390	382	378	375	369	367	365	362	Clackmannanshire
1,068	1,061	1,055	1,049	1,046	1,043	1,044	1,037	Dumfries & Galloway
1,357	1,350	1,344	1,335	1,330	1,329	1,314	1,305	Dundee City
1,036	1,028	1,020	1,015	1,011	1,009	1,006	999	East Ayrshire
979	991	1,003	1,012	1,022	1,028	1,034	1,035	East Dunbartonshire
918	930	944	961	983	1,003	1,024	1,042	East Lothian
941	952	968	980	998	1,008	1,029	1,033	East Renfrewshire
4,537	4,550	4,562	4,568	4,578	4,596	4,594	4,582	Edinburgh, City of
175	167	164	155	151	142	140	132	Eilean Siar
1,368	1,370	1,369	1,368	1,373	1,384	1,390	1,399	Falkirk
3,257	3,263	3,268	3,270	3,282	3,293	3,300	3,300	Fife
6,862	6,942	7,017	7,089	7,152	7,229	7,283	7,297	Glasgow City
1,729	1,713	1,701	1,688	1,682	1,681	1,675	1,674	Highland
719	716	710	712	713	705	706	699	Inverclyde
867	873	879	884	892	902	910	921	Midlothian
732	731	729	734	742	750	759	766	Moray
1,180	1,173	1,162	1,158	1,153	1,149	1,146	1,136	North Ayrshire
3,327	3,319	3,304	3,299	3,304	3,312	3,317	3,316	North Lanarkshire
122	122	117	118	114	113	108	106	Orkney Islands
1,167	1,168	1,171	1,174	1,185	1,194	1,201	1,208	Perth & Kinross
1,599	1,592	1,583	1,577	1,578	1,576	1,578	1,576	Renfrewshire
857	847	841	837	838	841	840	844	Scottish Borders
233	232	234	233	233	236	236	239	Shetland Islands
911	914	918	914	918	922	925	927	South Ayrshire
2,868	2,876	2,879	2,878	2,887	2,898	2,904	2,906	South Lanarkshire
854	870	883	897	916	931	941	951	Stirling
908	907	910	910	908	914	903	899	West Dunbartonshire
1,880	1,893	1,907	1,926	1,952	1,973	1,995	2,015	West Lothian
								Health board areas
3,745	3,740	3,738	3,747	3,759	3,767	3,779	3,769	Argyll & Clyde
3,127	3,115	3,100	3,087	3,082	3,080	3,077	3,062	Ayrshire & Arran
857	847	841	837	838	841	840	844	Borders
1,068	1,061	1,055	1,049	1,046	1,043	1,044	1,037	Dumfries & Galloway
3,257	3,263	3,268	3,270	3,282	3,293	3,300	3,300	Fife
2,612	2,622	2,630	2,640	2,658	2,682	2,696	2,712	Forth Valley
4,548	4,507	4,477	4,456	4,452	4,456	4,454	4,450	Grampian
9,755	9,868	9,969	10,060	10,155	10,255	10,331	10,355	Greater Glasgow
1,729	1,713	1,701	1,688	1,682	1,681	1,675	1,674	Highland
5,466	5,458	5,449	5,444	5,453	5,470	5,476	5,478	Lanarkshire
8,202	8,246	8,292	8,339	8,405	8,474	8,523	8,560	Lothian
122	122	117	118	114	113	108	106	Orkney
233	232	234	233	233	236	236	239	Shetland
3,313	3,289	3,267	3,251	3,238	3,236	3,216	3,205	Tayside
175	167	164	155	151	142	140	132	Western Isles

APPENDIX A

Assumed fertility rates by age; mid-year to mid-year periods; Scotland (rates per 1,000 females)

Age	2002-03	2003-04	2004-05	2005-06	2006-07	2007-08	2008-09	2009-10	2010-11	2011-12	2012-13	2013-14	2014-15	2015-16	2016-17	2017-18
15	4	3	3	3	3	3	3	3	3	3	3	3	3	3	3	3
16	11	11	11	11	11	11	11	10	10	10	10	10	10	10	10	10
17	29	29	28	28	28	27	27	27	27	26	26	26	26	26	25	25
18	42	41	40	40	39	39	38	38	38	37	37	37	36	36	36	36
19	51	50	49	49	48	48	48	47	47	46	46	46	45	45	45	44
20	54	55	55	54	54	54	53	53	53	52	52	52	52	51	51	51
21	58	56	56	56	56	56	56	56	56	56	55	55	55	55	55	55
22	56	57	57	57	57	57	57	57	57	57	57	57	57	58	58	58
23	60	57	58	58	58	58	59	59	59	59	60	60	60	60	61	61
24	65	61	61	61	62	62	62	63	63	63	63	64	64	65	65	65
25	69	67	67	68	68	68	68	69	69	69	70	70	70	71	71	71
26	78	76	76	76	76	76	76	77	77	77	77	78	78	78	79	79
27	85	85	84	84	84	84	85	85	85	85	85	86	86	86	87	87
28	92	92	92	92	92	92	92	92	92	92	92	93	93	93	94	94
29	96	96	96	96	96	96	96	96	97	97	97	97	97	98	98	98
30	98	97	97	97	97	97	97	98	98	98	98	98	99	99	99	100
31	95	94	94	94	96	97	97	97	98	98	98	98	98	99	99	99
32	89	88	88	88	88	90	91	92	92	92	92	92	93	94	94	94
33	79	79	80	80	80	80	82	83	84	84	85	85	85	85	86	87
34	68	69	69	70	70	71	71	72	74	74	75	75	76	76	77	77
35	58	58	59	59	60	60	61	61	62	64	64	65	65	66	66	67
36	48	48	48	49	49	50	50	51	51	53	54	54	55	56	56	56
37	37	38	39	39	40	40	41	41	42	42	43	44	45	46	46	47
38	29	30	30	31	31	32	32	33	33	34	34	35	36	37	37	38
39	22	23	23	24	24	25	25	25	26	26	27	27	28	29	29	30
40	16	17	18	18	18	19	19	19	20	20	20	21	21	22	23	23
41	9	10	10	11	11	11	11	12	12	12	12	13	13	13	14	14
42	6	7	7	7	7	7	7	8	8	8	8	8	9	9	9	9
43	4	4	4	4	4	4	4	5	5	5	5	5	5	5	6	6
44	2	2	2	2	2	2	2	2	3	3	3	3	3	3	3	3
45	1	1	1	1	1	1	1	1	1	1	1	1	1	1	1	1
46	1	1	1	1	1	1	1	1	1	1	1	1	1	1	1	1
Total fertility rate (TFR)	1.509	1.504	1.505	1.507	1.511	1.517	1.525	1.533	1.540	1.547	1.553	1.558	1.567	1.577	1.586	1.591

APPENDIX B

Assumed mortality rates by sex, for selected ages and years; Scotland

(rates per 100,000)

Age	Mid-year to mid-year				¹ Percentage improvement 2002-03 to 2017 - 18
	2002-03	2005 - 06	2012-13	2017-18	
MALES					
0	95	86	74	69	28
2	23	20	16	14	39
7	13	11	9	8	33
12	23	20	16	14	39
17	95	85	72	67	30
22	126	113	98	90	28
27	151	143	132	126	17
32	164	162	161	157	4
37	191	185	180	174	8
42	275	259	239	227	18
47	421	411	396	380	10
52	650	589	511	474	27
57	1,165	1,074	957	895	23
62	1,724	1,602	1,438	1,345	22
67	2,629	2,269	2,014	1,884	28
72	4,494	3,869	3,131	2,946	34
77	7,148	6,385	5,155	4,674	35
82	11,025	9,863	8,366	7,515	32
87	16,828	15,503	13,345	12,256	27
90 & over	23,751	22,612	20,359	19,275	19
FEMALES					
0	83	79	71	66	20
2	18	15	12	10	44
7	8	7	6	6	21
12	13	11	9	8	40
17	39	37	34	32	18
22	40	37	33	31	22
27	46	43	38	35	24
32	63	60	56	53	16
37	91	85	76	70	23
42	165	159	148	140	15
47	257	249	237	227	11
52	401	378	339	316	21
57	660	634	589	559	15
62	979	929	865	821	16
67	1,573	1,391	1,244	1,181	25
72	2,830	2,506	1,997	1,883	33
77	4,702	4,364	3,487	3,080	35
82	7,895	7,351	6,338	5,509	30
87	12,855	12,252	10,798	9,841	23
90 & over	21,355	21,070	19,570	18,499	13

¹ Percentage improvement in mortality has been calculated using actual, not rounded, mortality rates

Fertility and mortality local scaling factors by council and health board area

Area	Local Scaling Factors		
	Fertility	Mortality	
		Males	Females
SCOTLAND	1.000	1.000	1.000
Council areas			
Aberdeen City	0.849	0.969	0.948
Aberdeenshire	1.113	0.817	0.854
Angus	1.061	0.885	0.989
Argyll & Bute	1.080	0.928	0.961
Clackmannanshire	1.094	1.029	1.030
Dumfries & Galloway	1.066	0.845	0.918
Dundee City	0.954	1.051	1.014
East Ayrshire	1.026	1.045	1.109
East Dunbartonshire	1.040	0.796	0.848
East Lothian	1.143	0.854	0.959
East Renfrewshire	1.170	0.822	0.810
Edinburgh, City of	0.784	0.941	0.930
Eilean Siar	1.097	1.110	0.903
Falkirk	0.989	1.015	1.036
Fife	1.012	0.924	0.935
Glasgow City	0.906	1.340	1.169
Highland	1.143	0.946	0.946
Inverclyde	1.036	1.247	1.113
Midlothian	1.165	0.950	1.026
Moray	1.132	0.923	0.960
North Ayrshire	1.053	1.048	1.032
North Lanarkshire	1.063	1.146	1.103
Orkney Islands	1.012	0.905	0.823
Perth & Kinross	1.124	0.832	0.875
Renfrewshire	1.074	1.104	1.088
Scottish Borders	1.139	0.857	0.930
Shetland Islands	1.195	0.856	0.834
South Ayrshire	1.042	0.913	0.966
South Lanarkshire	1.033	1.003	1.055
Stirling	0.953	0.870	0.980
West Dunbartonshire	1.016	1.147	1.117
West Lothian	1.085	1.054	1.094
Health board areas			
Argyll & Clyde	1.057	1.097	1.068
Ayrshire & Arran	1.041	1.001	1.032
Borders	1.139	0.857	0.930
Dumfries & Galloway	1.066	0.845	0.918
Fife	1.012	0.924	0.935
Forth Valley	0.994	0.971	1.016
Grampian	0.993	0.895	0.911
Greater Glasgow	0.950	1.183	1.084
Highland	1.143	0.946	0.946
Lanarkshire	1.055	1.069	1.076
Lothian	0.908	0.950	0.968
Orkney	1.012	0.905	0.823
Shetland	1.195	0.856	0.834
Tayside	1.035	0.923	0.957
Western Isles	1.097	1.110	0.903

APPENDIX D

Migration assumptions by council and health board area (persons per annum)

Area	Migration assumptions	
	2002	2003/2004
	-2003	-2017/2018
SCOTLAND	-3,000	-1,500
Council areas		
Aberdeen City	-1,700	-1,300
Aberdeenshire	-200	0
Angus	-250	-100
Argyll & Bute	100	250
Clackmannanshire	-200	-50
Dumfries & Galloway	-100	50
Dundee City	-1,300	-1,000
East Ayrshire	-300	-250
East Dunbartonshire	-450	-350
East Lothian	600	750
East Renfrewshire	200	250
Edinburgh, City of	750	800
Eilean Siar	-150	-100
Falkirk	400	500
Fife	700	800
Glasgow City	-200	-2,600
Highland	50	100
Inverclyde	-350	-300
Midlothian	50	300
Moray	-350	-250
North Ayrshire	-300	-200
North Lanarkshire	-600	-500
Orkney Islands	-100	-50
Perth & Kinross	450	550
Renfrewshire	-700	-600
Scottish Borders	450	550
Shetland Islands	-150	0
South Ayrshire	-50	50
South Lanarkshire	-150	-100
Stirling	400	550
West Dunbartonshire	-450	-350
West Lothian	900	1,100
Health board areas		
Argyll & Clyde	-1,150	-750
Ayrshire & Arran	-650	-400
Borders	450	550
Dumfries & Galloway	-100	50
Fife	700	800
Forth Valley	600	1,000
Grampian	-2,250	-1,550
Greater Glasgow	-750	-3,000
Highland	50	100
Lanarkshire	-700	-550
Lothian	2,300	2,950
Orkney	-100	-50
Shetland	-150	0
Tayside	-1,100	-550
Western Isles	-150	-100

Uses and limitations of projections

The limitations of population projections must be fully recognised. A projection is a calculation showing what happens if particular assumptions are made. (The sub-national population projections are trend-based. They are, therefore, not policy-based forecasts of what the Government expects to happen). Many social and economic factors influence population change including policies adopted by both central and local government. The relationships between the various factors are complex and largely unknown. A single outcome is given in this booklet for each area, but this does not imply that a confident forecast of what will happen has been made, and it is not possible to define helpful statistical limits within which the outturn is likely to fall.

The effect of the assumptions - about future migration, fertility and mortality - is often limited in the sense that there is considerable inertia in population change. The future population of an area is strongly influenced by the initial base population. Because the process of change is cumulative the reliability of projections decreases over time. Change affects some populations more rapidly and more seriously than others. Thus, projections for areas with small populations tend to be relatively less reliable than those for areas with large populations, because the former are usually affected more by migration. Projections of the number of adults are usually more reliable than those for children because of difficulties in projecting levels of fertility and parental migration. The size of the migration flows, and the uncertainty of future trends, are such that for many areas the migration assumptions are more critical than the fertility and mortality assumptions.

Central government population projections set local and regional population patterns into a national context. They are trend-based. However, it should be remembered that new local planning policies are often intended to modify past trends. Structure plans may be based on reasoned and agreed departures from the projections that seem better able to fit particular local circumstances.

Consequences of projections

It should be recognised that population projections, like some other types of projections, may indicate that existing trends and policies are likely to lead to situations, which are judged undesirable. If new policies are then introduced they may result in the original projections not being realised. However, this means the projections will have fulfilled one of their prime functions, to show the consequences of present demographic trends with sufficient notice for any necessary action to be taken.



General Register Office
for
SCOTLAND
information about Scotland's people