

General Register Office
for
SCOTLAND
information about Scotland's people

Mid-2005 Population Estimates Scotland
Population estimates by sex, age and administrative
area

First published on 27 April 2006

Revised 27 July 2007

A National Statistics publication

National Statistics are produced to high professional standards set out in the National Statistics Code of Practice. They undergo regular quality assurance reviews to ensure that they meet customer needs. They are produced free from any political interference.

© Crown copyright 2007

Contents

Main Points	1
1. Background	2
2. The Population of Scotland.....	2
3. The Age and Sex Structure of the Population.....	4
4. Results for Administrative Areas.....	6
4.1 Population Change 2004-2005	6
4.2 Population Change 1995-2005	6
4.3 Sex and Age Structure of Administrative Areas in Scotland.....	10
5. Population Density.....	11
6. Notes and Definitions.....	20
7. Notes on Statistical Publications.....	25

List of Tables

Table 1 Estimated population by age and sex, Scotland: 30 June 2005.....	1
Table 2 Estimated population by sex, single year of age and administrative area: 30 June 2005.....	2
Table 3 Estimated population by sex, five year age group and administrative area: 30 June 2005.....	11
Table 4 Components of population change by administrative area: 2004-2005	14
Table 5 Components of population change by administrative area: 2001-2005	15
Table 6 Components of population change by administrative area: 1995-2005	16
Table 7 Age structure of administrative areas: 30 June 2006	17
Table 8 Rest of UK/Overseas moves by age group: 2004-2005.....	18
Table 9 Land area and population density, by administrative area: 30 June 2005	19

List of Figures

Figure 1	Estimated population of Scotland, 1951-2005	3
Figure 2	Natural change and net migration, 1951-2005.....	4
Figure 3	Estimated population by age and sex, 30 June 2005	5
Figure 4	The changing age structure of Scotland's population, 1995-2005	6
Figure 5a	Percentage change in population, Council areas, 1995-2005 (Map)	7
Figure 5b	Percentage change in population, Council areas, 1995-2005 (Chart)	8
Figure 6a	Percentage change in population, NHS Board areas, 1995-2005 (Map)	9
Figure 6b	Percentage change in population, NHS Board areas, 1995-2005 (Chart)	10
Figure 7	Age structure of Council areas, 30 June 2006 (% under 16, 16-64 and 65+)	11
Figure 8	Age structure of NHS Board areas, 30 June 2006 (% under 16, 16-64 and 65+)	11

Main Points

The key points in this paper are:-

- The estimated population of Scotland on 30 June 2005 was 5,094,800, a rise of 16,400 on the previous year and an increase of 30,600 since mid-2001;
- Compared with the previous year there were more births (+1.3 per cent) and fewer deaths (-1.8 per cent). Despite this, deaths exceeded the number of births by about 2,300;
- Over the year there was a net gain from migration of around 19,000, including a net gain of 12,500 people from the rest of the UK and a net gain of 7,300 people from overseas (including asylum seekers);
- Around 57,300 people came to Scotland from England, Wales and Northern Ireland and around 44,800 left Scotland to go in the opposite direction. The net inflow of around 12,500 is lower than the previous year's 15,500 net inflow reflecting less people coming to Scotland and more people leaving than the previous year;
- The lower overseas net gain of 7,300 comes from an inflow of around 35,400 (including asylum seekers) and an outflow of 28,100. Note that short-term migrants are not included in the estimate as an international migrant is defined as someone who changes their country of residence for 12 months or more;
- Since mid-2001 and the 2001 Census, Scotland's population has increased by 0.6 per cent (+30,600) from 5.06 million to 5.09 million. However, over the last ten years, Scotland's population has decreased by 8,890 (-0.2 per cent): 5.10 million to 5.09 million, due to an excess of deaths over births because net migration fluctuated around zero for most of the period;
- Amongst the Council areas, Highland and Falkirk had the largest percentage increases over the year at 1.1 per cent, closely followed by Edinburgh City at 0.9 per cent. East Dunbartonshire and West Dunbartonshire experienced the largest percentage decreases at 0.6 per cent, followed by Midlothian with a percentage decrease of 0.5 per cent;
- Of Council areas which had been decreasing: Dundee City's population increased for the first time since mid-1995, and both Eilean Siar and Glasgow City increased for two years in a row;
- Of the NHS Board areas, Highland (+1.1 per cent), Forth Valley (+0.9 per cent), Lothian (+0.6 per cent) and Fife (+0.6 per cent) had the largest percentage increases. The only two NHS Board areas with percentage decreases were Argyll & Clyde (-0.4 per cent) and Ayrshire and Arran (-0.2 per cent);
- Population density is 65 persons per square kilometre and ranges from 8 persons per square kilometre in Highland Council area to 3,298 persons per square kilometre in Glasgow City Council area.

1. Background

1.1 This paper summarises the Registrar General for Scotland's mid-2005 estimates of the population of Scotland and its administrative areas. Some relevant historical information and a table giving land areas and population densities are also presented.

1.2 These population estimates are produced using the demographic cohort component method. The estimates are based on the 2001 Census. Each year the population is aged on one year i.e. the 0 year olds become 1 year olds, the number of births in the year are added, the number of deaths subtracted and adjustments are made for estimated migration and other changes in special populations. It is important to remember that while the number of births and deaths are considered to be virtually complete, there is no comprehensive source of migration data either for moves within Scotland to the rest of the UK, or to the rest of the world. Estimates of migration are made using the best proxy sources available including health service patient registrations and survey information. Therefore, any error in the estimates is likely to be due to the migration estimates, particularly the international estimates. Information for the old 15 NHS Boards including Argyll & Clyde is presented in this paper. It is planned to produce population estimates for the new areas taking into account the abolition of Argyll & Clyde NHS Board for the Registrar General's Annual Review, due to be published in July 2006.

2. The Population of Scotland

2.1 The estimated population of Scotland on 30 June 2005 was 5,094,800, a rise of 16,400 on the previous year and an increase of 30,600 since mid-2001. In the twelve months to mid-2005, there was a net migration gain of around 19,000, reflecting a net gain of around 12,500 people from the rest of the UK, a net gain of around 7,300 from overseas (including asylum seekers) and an adjustment of -1,500 for unmeasured migration (see the notes and definitions section for more details). Movements to and from the armed forces showed a net gain of around 940 and other changes (including changes in the prison population, and changes in the number of armed forces stationed in Scotland) amounted to a net loss of around 600 people. Compared with the previous year there were more births (+1.3 per cent) and fewer deaths (-1.8 per cent). Despite this, deaths exceeded the number of births by about 2,300.

2.2 The population increased for the third year in a row because more people came to Scotland than left. Around 57,300 people came to Scotland from England, Wales and Northern Ireland and around 44,800 left Scotland to go in the opposite direction. The net inflow of around 12,500 is lower than the previous year's 15,500 net inflow reflecting less people coming to Scotland and more people leaving than the previous year.

2.3 The lower overseas net gain of 7,300 comes from an inflow of around 35,400 (including asylum seekers) and an outflow of 28,100. Similar to the cross border flows, the net gain from overseas is also lower than the previous year's net inflow of 11,700. Estimating international migration is particularly difficult as the estimate is based primarily on the International Passenger Survey (IPS) which is a sample survey conducted at main airports and ports across the UK, and the sample size for Scotland is very small (around 100 contacts in 2004). Internationally, a migrant is defined as someone who changes their country of usual residence for 12 months or more, therefore, short-term seasonal migrant workers will not be counted in the migration estimates, and hence will not be counted in the mid-year population estimates. More details about the migration data sources and definitions used can be found in Section 6.

2.4 For comparison purposes it is better to look at a time frame of longer than one year, as population change tends to fluctuate from year to year, particularly for smaller areas. Since mid-2001 and the 2001 Census, Scotland's population has increased by 0.6 per cent (+30,600) from 5.06 million to 5.09 million (Table 5). However, over the last ten years, Scotland's population has decreased by 8,890 (-0.2 per cent): 5.10 million to 5.09 million (Table 6 and Figure 1). As illustrated by Figure 2, the main reason for the decrease is the excess of deaths over births (-34,975 from 1995 to 2005) though the gap has been closing in recent years, to about 2,300 between mid-04 and mid-05.

Figure 1 Estimated population of Scotland, 1951-2005

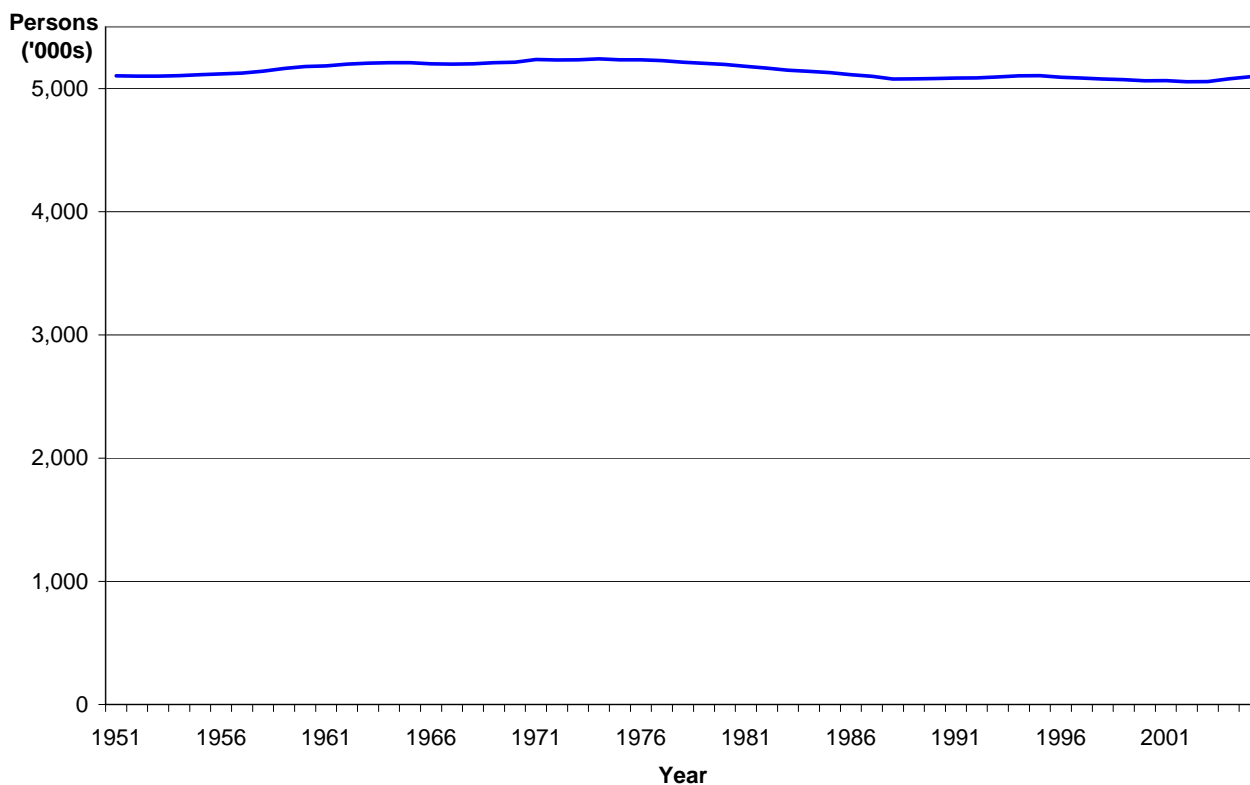
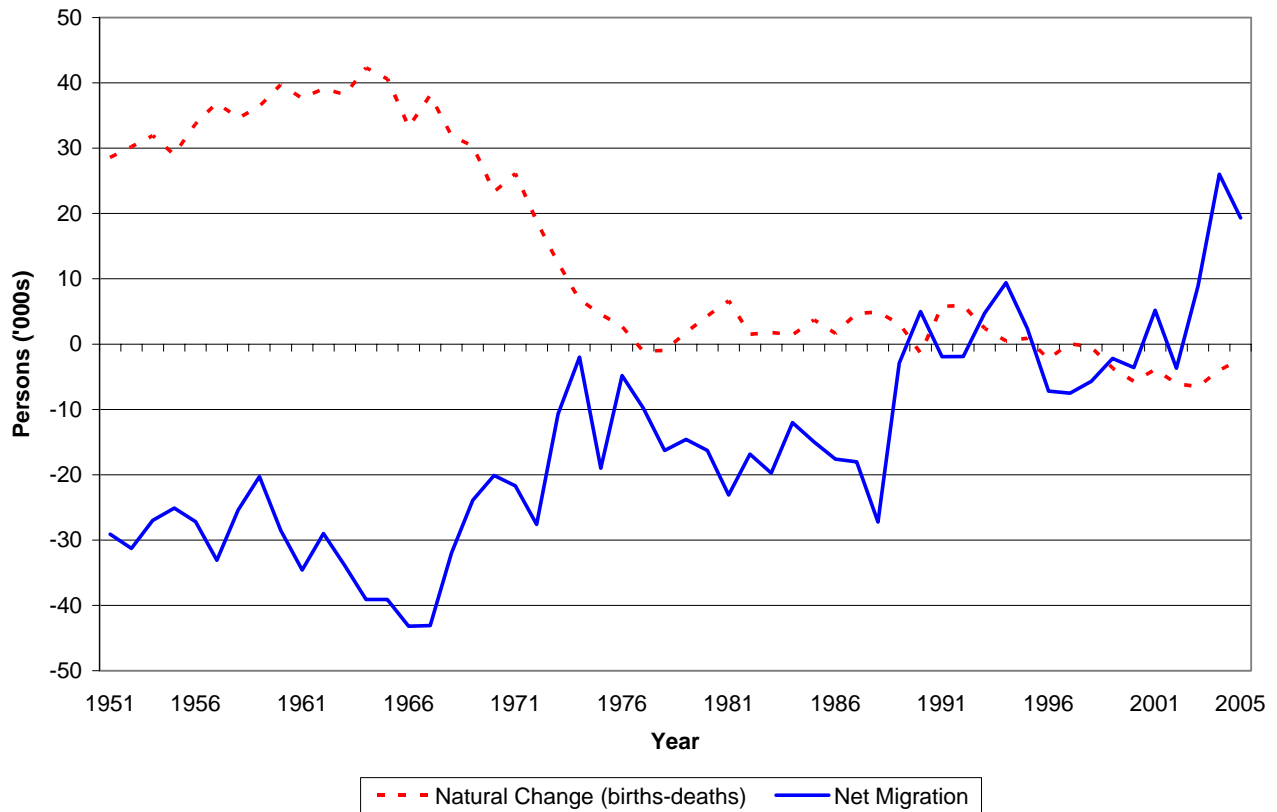


Figure 2 Natural change and net migration, 1951-2005



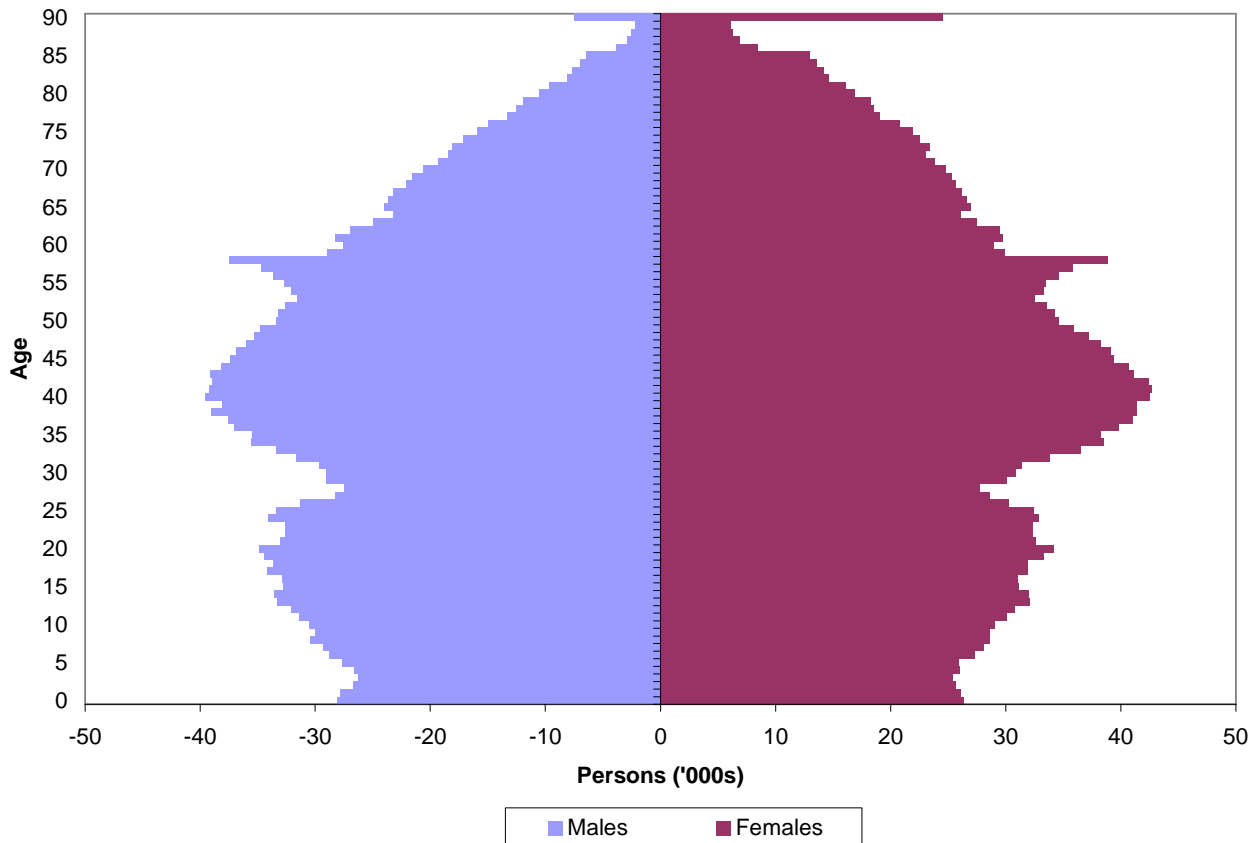
2.5 Table 8 shows movements to /from the UK and overseas between mid-2004 and mid-2005 by age group. As previously mentioned the main source for the overseas migration is the International Passenger Survey and as the sample is small for Scotland an age and sex distribution is assumed using information about GP registrations. Some changes have been made this year to the method used and these are described in Section 6.

2.6 Migrants tend to be much younger than the general population with between 46 percent (rest of the UK) and 69 per cent (overseas) of in-migrants aged 16-34 compared with 24 per cent of the resident population. Only 5 percent of people coming to Scotland from the rest of the UK were aged 65 and over, as were an assumed 1 per cent of overseas migrants.

3. The Age and Sex Structure of the Population

3.1 The age/sex composition is one of the most important aspects of the population, as changes in different age groups will have different social and economic impacts. For example, increases in the elderly population are likely to place a greater demand on health and social services. Scotland's estimated population is shown by age and sex in Figure 3.

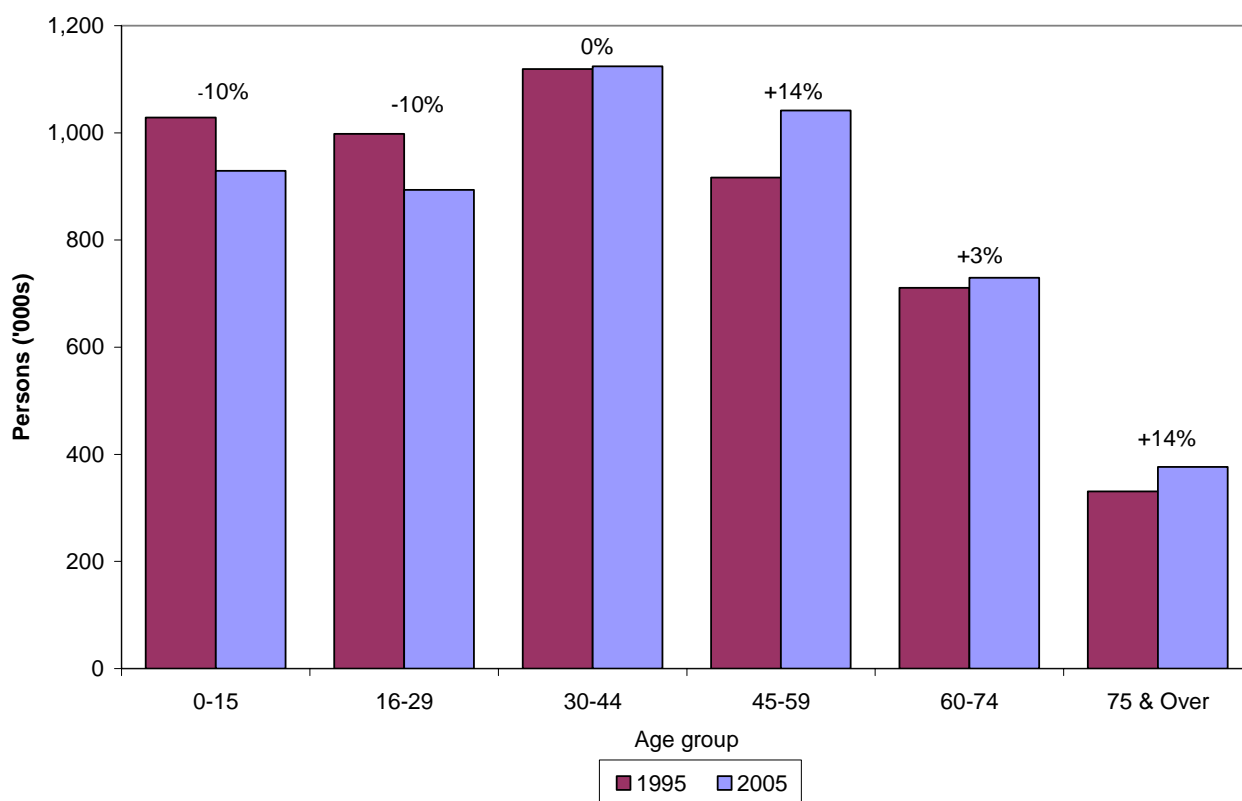
Figure 3 Estimated population by age and sex, 30 June 2005



3.2 Among older people, particularly over 75, the higher number of females reflects the longer expectation of life for women, partly as a result of higher rates of male mortality during the Second World War. The effects of a flu epidemic in 1922 and lower levels of fertility during the First World War are also evident, as seen in the sharp decline in the population aged over 84. The two baby booms of 1947 and the 1960s can also be seen with a sharp peak at age 58 and the bigger bulge between the ages of 35 and 45. These baby boomers and low fertility rates are the main reason Scotland's population is likely to age in the future, though the scale of ageing is open to debate.

3.3 The changing age structure of the population since 1995 is illustrated in Figure 4. Of particular note is the decrease of 10 per cent in the number of children under 16 and the increase of 14 per cent in the number of people aged 75 and over. The ageing of the population is evident in the rise of 14 per cent in the 45-59 age group, and the fall of 10 per cent in the 16-29 age group.

Figure 4 The changing age structure of Scotland's population, 1995-2005



4. Results for Administrative Areas

4.1 Population Change 2004-2005

4.1.1 Population estimates for each Council and NHS Board area, together with details of the components of population change (births, deaths, net migration and other changes) for the period mid-2004 to mid-2005, are shown in Table 2, Table 3 and Table 4.

4.1.2 Amongst the Council areas, Highland and Falkirk had the largest percentage increases at 1.1 per cent, closely followed by Edinburgh City at 0.9 per cent. East Dunbartonshire and West Dunbartonshire experienced the largest percentage decreases at 0.6 per cent, followed by Midlothian with a percentage decrease of 0.5 per cent.

4.1.3 Of Council areas which had been decreasing: Dundee City's population increased for the first time since mid-1995, and both Eilean Siar and Glasgow City increased for two years in a row.

4.1.4 Of the NHS Board areas, Highland (+1.1 per cent), Forth Valley (+0.9 per cent), Lothian (+0.6 per cent) and Fife (+0.6 per cent) had the largest percentage increases. The only two NHS Board areas with percentage decreases were Argyll & Clyde (-0.4 per cent) and Ayrshire and Arran (-0.2 per cent).

4.2 Population Change 1995-2005

4.2.1 Details of population changes between 1995 and 2005 for administrative areas are shown in Table 6. These changes are illustrated for Council areas in the map at Figure 5a

and the chart at Figure 5b which both show the percentage change in the population of Council areas between 1995 and 2005.

Figure 5a Percentage change in population, Council areas, 1995-2005 (Map)

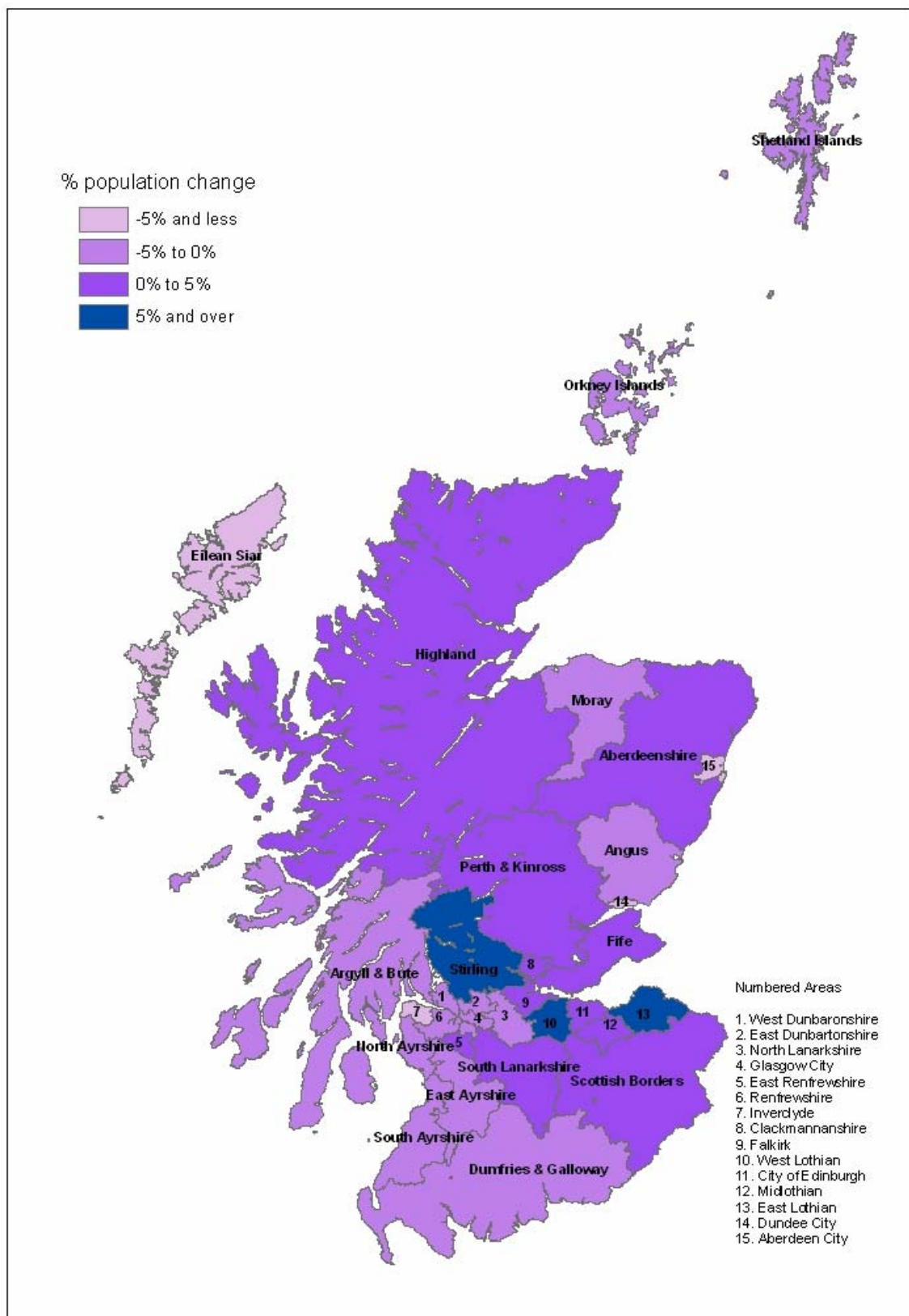
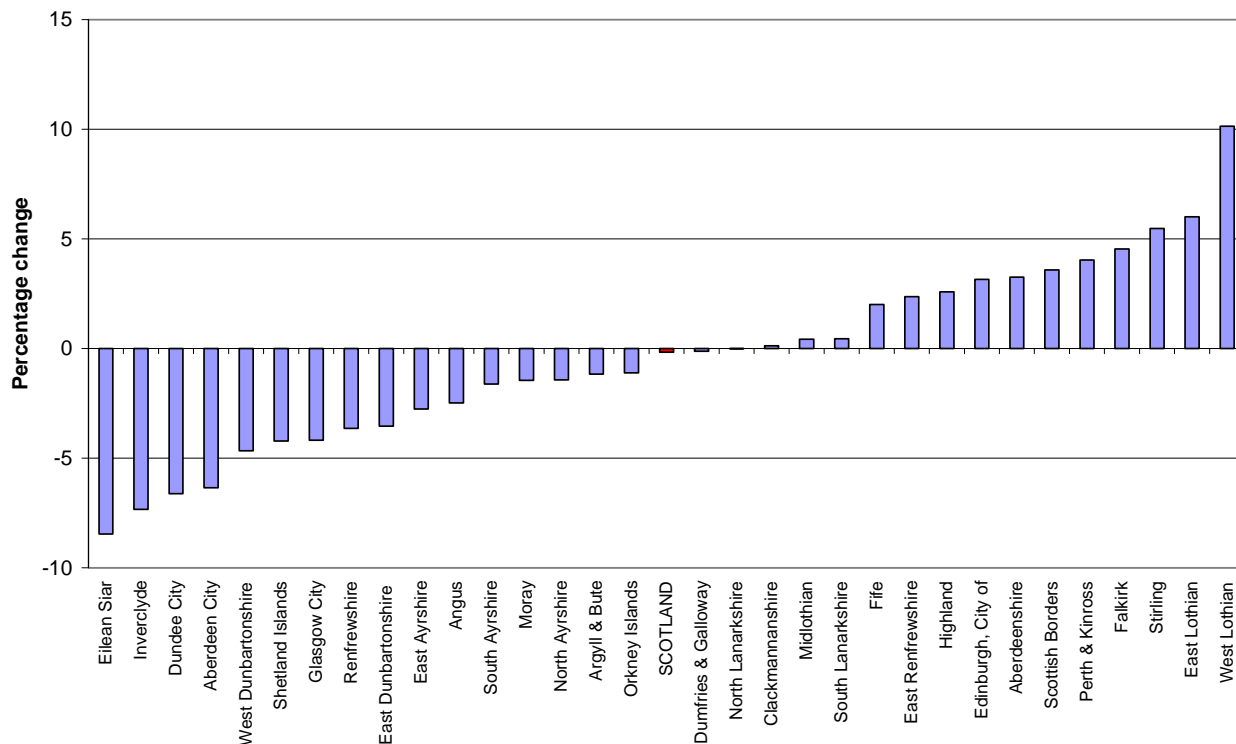


Figure 5b Percentage change in population, Council areas, 1995-2005 (Chart)



4.2.2 Eilean Siar (-8.5 per cent), Inverclyde (-7.3 percent) Dundee City (-6.6) and Aberdeen City (-6.4 per cent) show the greatest percentage decreases for Council areas. The largest absolute reduction in numbers was for Glasgow City (-25,290). West Lothian (+10.1 per cent), East Lothian (+6.0 per cent) and Stirling (+5.5 per cent) show the greatest percentage increases.

4.2.3 The map at Figure 6a and the chart at Figure 6b show the percentage change in population between 1995 and 2005 for each NHS Board area. The greatest percentage decrease in population occurred in the Western Isles (-8.5 per cent), Shetland (-4.2 per cent) and Argyll & Clyde (-3.9 per cent). The largest percentage increases were in Lothian (+4.6 per cent), Forth Valley (+3.9 per cent) and Borders (+3.6 per cent).

Figure 6a Percentage change in population, NHS Board areas, 1995-2005 (Map)

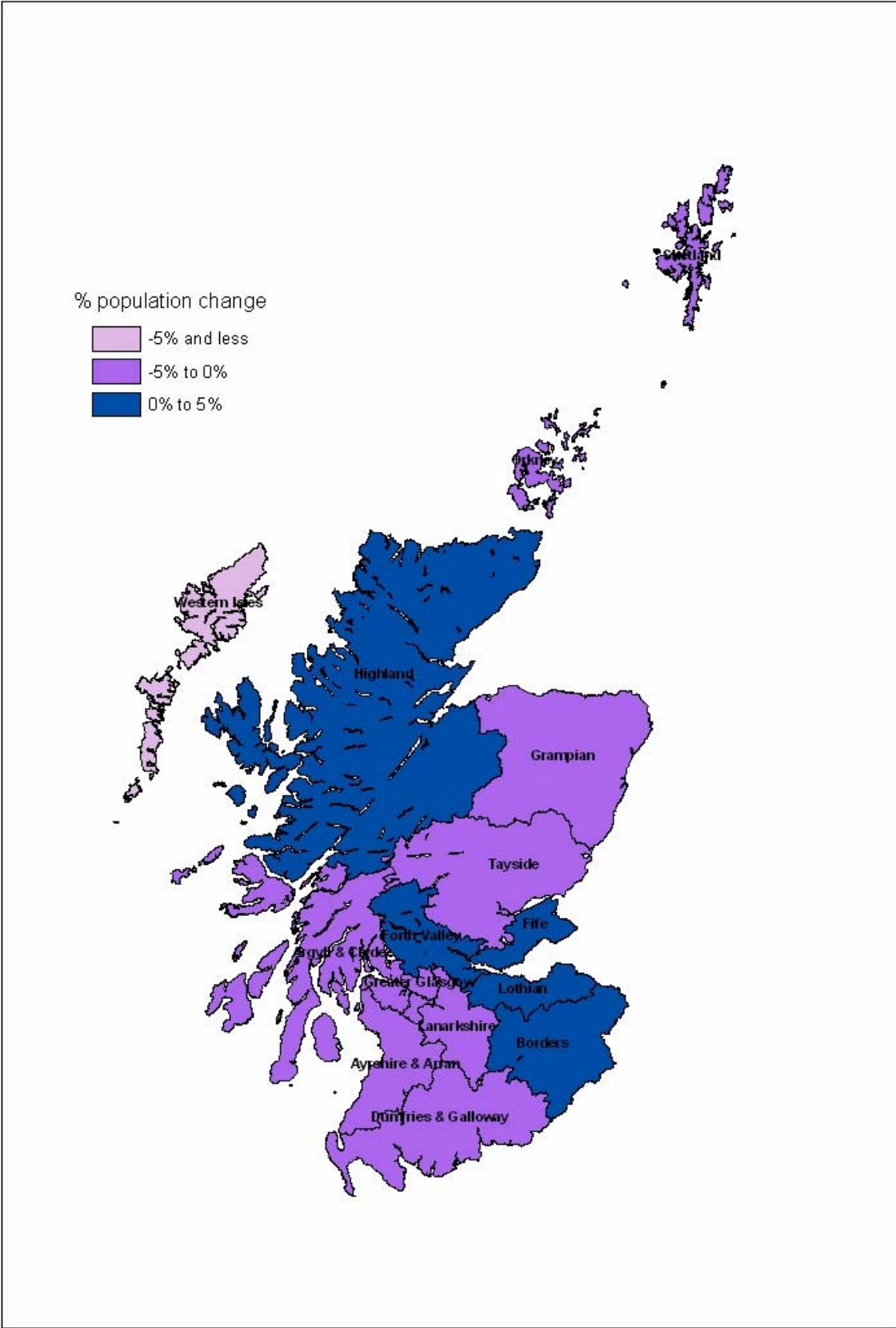
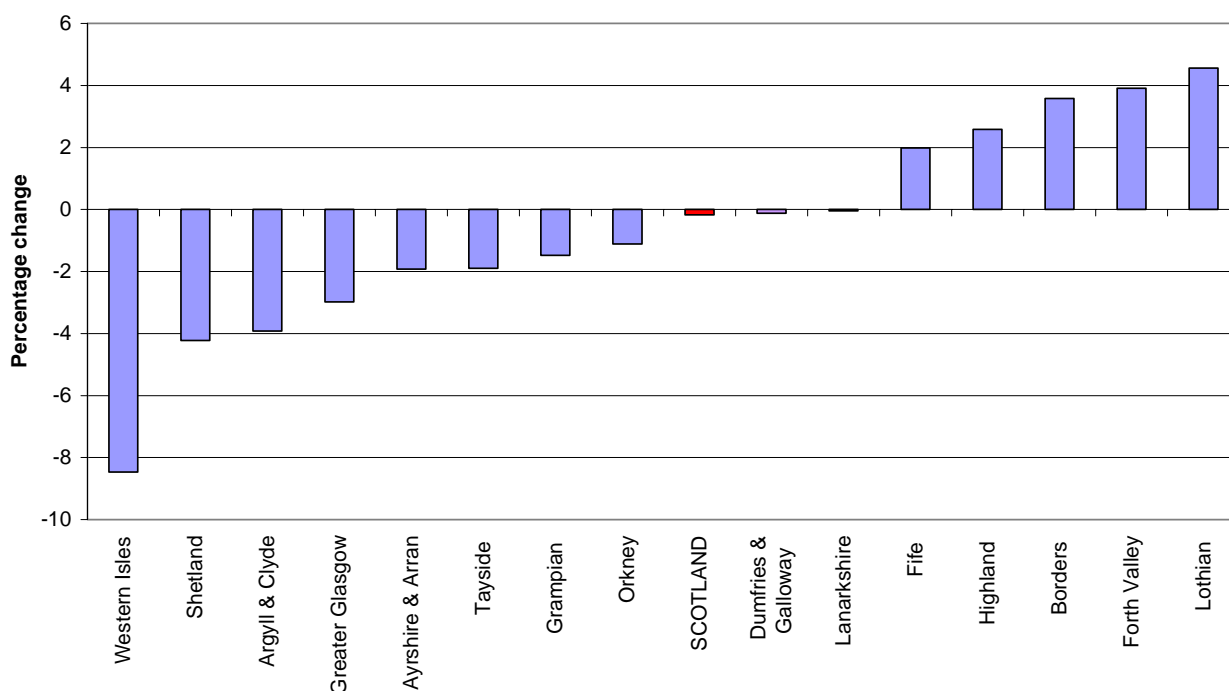


Figure 6b Percentage change in population, NHS Board areas, 1995-2005 (Chart)



4.2.5 It is planned to produce more analysis about the impact of migration and natural change on the size and structure of the population in the Registrar General's Annual Review, due to be published in July 2006.

4.3 Sex and Age Structure of Administrative Areas in Scotland

4.3.1 There are more females than males in Scotland in mid-2005 and this is the case for all Council and NHS Board areas except Moray, the Shetland Islands and Shetland respectively. This is shown in Table 7, where the "sex ratio" (the male population divided by the female population) is greater than one.

4.3.2 Though the pattern of age distribution is complex, some general themes can be seen from Table 7. The major cities have the highest proportions of males and females of working age, for example, in Edinburgh City 71 per cent of males and 64 per cent of females are of working age and in Glasgow City there are similar results (70 per cent of males and 62 per cent of females). The highest proportions of people of pensionable age tend to be found in more rural areas such as Dumfries & Galloway (males 18 per cent; females 29 per cent) and Eilean Siar (males 17 per cent; females 30 per cent).

4.3.3 These patterns can also be seen in Figure 7 and Figure 8 which show the proportion of the population under 16, aged 16-64 and 65 and over for Council and NHS Boards respectively.

Figure 7 Age structure of Council areas, 30 June 2006 (% under 16, 16-64 and 65+)

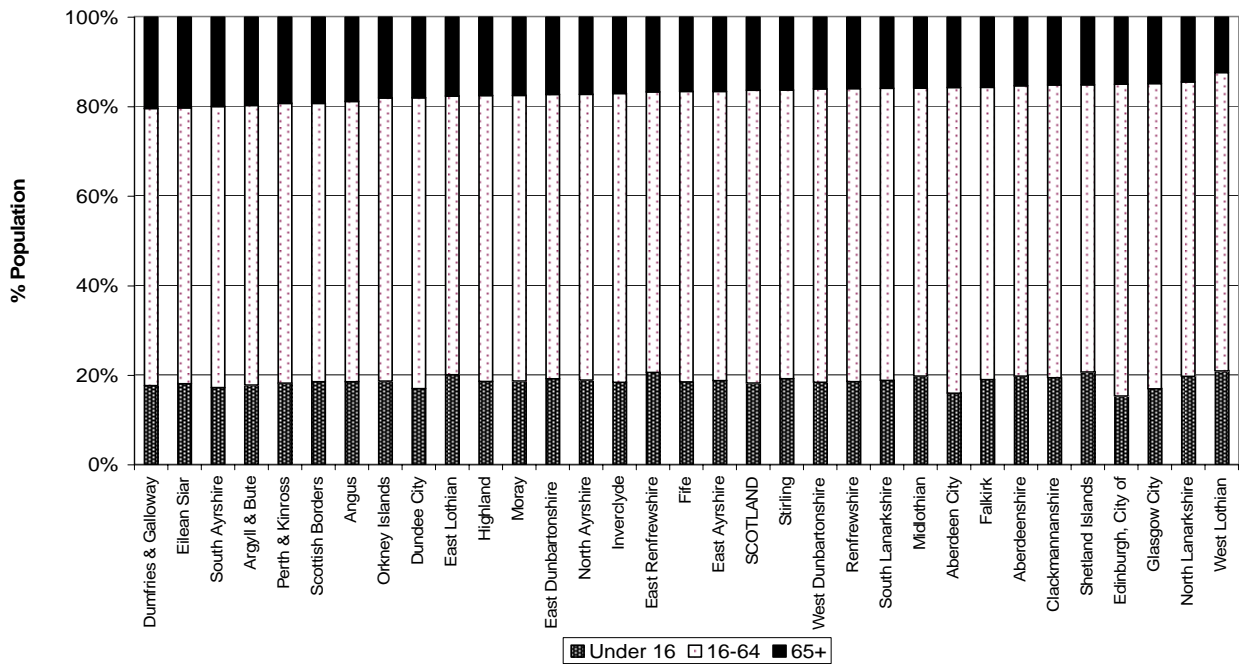
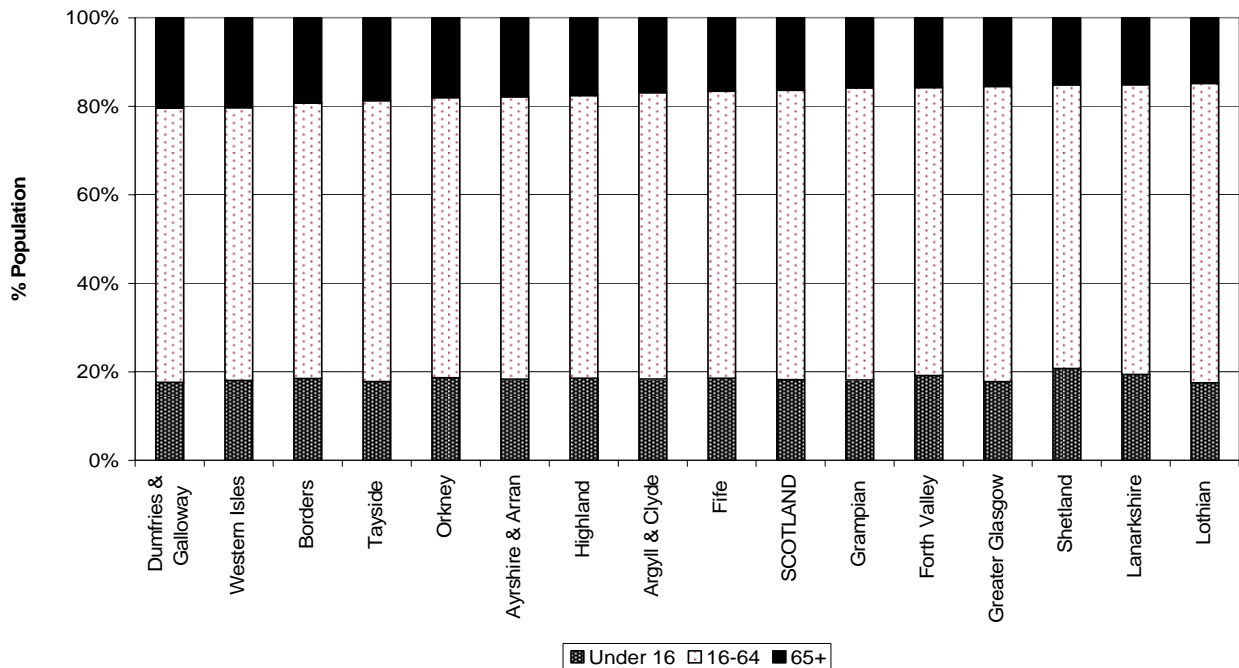


Figure 8 Age structure of NHS Board areas, 30 June 2006 (% under 16, 16-64 and 65+)



5. Population Density

5.1 Information on land areas and population densities is shown in Table 9. Population density is 65 persons per square kilometre for Scotland and ranges from 8 persons per square kilometre in Highland Council area to 3,298 persons per square kilometre in Glasgow City Council area.

Table 1 Estimated population by age and sex, Scotland: 30 June 2005

Age	Persons	Males	Females	Age	Persons	Males	Females	Age	Persons	Males	Females
All ages	5,094,800	2,456,109	2,638,691								
0	54,476	28,082	26,394	30	60,000	29,086	30,914	60	56,574	27,568	29,006
1	53,989	27,839	26,150	31	61,097	29,689	31,408	61	58,024	28,263	29,761
2	52,380	26,726	25,654	32	65,443	31,635	33,808	62	56,442	26,985	29,457
3	51,643	26,235	25,408	33	69,964	33,424	36,540	63	52,465	24,979	27,486
4	52,712	26,659	26,053	34	74,132	35,584	38,548	64	49,418	23,269	26,149
0 - 4	265,200	135,541	129,659	30 - 34	330,636	159,418	171,218	60 - 64	272,923	131,064	141,859
5	53,553	27,666	25,887	35	73,754	35,466	38,288	65	50,998	24,025	26,973
6	56,128	28,829	27,299	36	76,876	37,021	39,855	66	50,299	23,657	26,642
7	57,396	29,332	28,064	37	78,616	37,574	41,042	67	49,384	23,187	26,197
8	59,089	30,427	28,662	38	80,396	39,024	41,372	68	47,778	22,098	25,680
9	58,606	30,004	28,602	39	79,529	38,090	41,439	69	46,884	21,536	25,348
5 - 9	284,772	146,258	138,514	35 - 39	389,171	187,175	201,996	65 - 69	245,343	114,503	130,840
10	59,541	30,513	29,028	40	82,038	39,529	42,509	70	45,434	20,659	24,775
11	61,525	31,398	30,127	41	81,998	39,260	42,738	71	43,167	19,351	23,816
12	62,977	32,137	30,840	42	81,389	38,989	42,400	72	41,499	18,437	23,062
13	65,427	33,313	32,114	43	80,199	39,097	41,102	73	41,548	18,104	23,444
14	65,649	33,601	32,048	44	78,890	38,154	40,736	74	39,706	17,128	22,578
10 - 14	315,119	160,962	154,157	40 - 44	404,514	195,029	209,485	70 - 74	211,354	93,679	117,675
15	63,903	32,777	31,126	45	76,797	37,426	39,371	75	37,881	15,955	21,926
16	63,884	32,863	31,021	46	76,026	36,858	39,168	76	35,767	14,970	20,797
17	66,149	34,188	31,961	47	74,287	36,022	38,265	77	32,406	13,361	19,045
18	65,570	33,650	31,920	48	72,558	35,297	37,261	78	31,086	12,578	18,508
19	67,767	34,448	33,319	49	70,685	34,763	35,922	79	30,248	11,925	18,323
15 - 19	327,273	167,926	159,347	45 - 49	370,353	180,366	189,987	75 - 79	167,388	68,789	98,599
20	69,091	34,875	34,216	50	68,049	33,416	34,633	80	27,431	10,579	16,852
21	65,599	33,021	32,578	51	67,477	33,212	34,265	81	25,798	9,693	16,105
22	64,946	32,583	32,363	52	66,212	32,640	33,572	82	22,689	8,071	14,618
23	64,926	32,574	32,352	53	64,035	31,541	32,494	83	21,924	7,688	14,236
24	66,985	34,086	32,899	54	65,376	32,114	33,262	84	20,519	6,961	13,558
20 - 24	331,547	167,139	164,408	50 - 54	331,149	162,923	168,226	80 - 84	118,361	42,992	75,369
25	65,866	33,408	32,458	55	66,185	32,670	33,515	85	19,481	6,454	13,027
26	61,637	31,318	30,319	56	68,245	33,665	34,580	86	12,250	3,806	8,444
27	56,869	28,254	28,615	57	70,527	34,705	35,822	87	9,742	2,856	6,886
28	55,240	27,470	27,770	58	76,445	37,520	38,925	88	8,854	2,557	6,297
29	59,105	29,030	30,075	59	58,930	28,975	29,955	89	8,278	2,180	6,098
25 - 29	298,717	149,480	149,237	55 - 59	340,332	167,535	172,797	85 - 89	58,605	17,853	40,752
								90 & over	32,043	7,477	24,566

Age group summaries

	Persons	Males	Females
All aged under 16	928,994	475,538	453,456
All aged under 18	1,059,027	542,589	516,438
All aged 16 & over	4,165,806	1,980,571	2,185,235
All aged 18 & over	4,035,773	1,913,520	2,122,253
All aged 16-29	893,634	451,768	441,866
All aged 30-44	1,124,321	541,622	582,699
All aged 45-64/59 (M/F)	1,172,898	641,888	531,010
All aged 65/60 (M/F) & over	974,953	345,293	629,660
All aged 75 & over	376,397	137,111	239,286

Table 2 Estimated population by sex, single year of age and administrative area: 30 June 2005

Area	PERSONS																																
	All Ages	Age																															
		0	1	2	3	4	5	6	7	8	9	10	11	12	13	14	15	16	17	18	19	20	21	22	23	24	25	26	27	28	29	30	
SCOTLAND	5,094,800	54,476	53,989	52,380	51,643	52,712	53,553	56,128	57,396	59,089	58,606	59,541	61,525	62,977	65,427	65,649	63,903	63,884	66,149	65,570	67,767	69,091	65,599	64,946	64,926	66,985	65,866	61,637	56,869	55,240	59,105	60,000	
Council areas																																	
Aberdeen City	205,910	2,106	1,945	1,981	1,886	1,930	1,917	2,019	1,957	2,009	1,990	2,089	2,136	2,222	2,229	2,309	2,191	2,237	2,525	2,806	3,268	3,339	3,344	3,577	3,592	3,646	3,818	3,288	3,007	3,015	2,863	2,836	
Aberdeenshire	233,430	2,503	2,505	2,503	2,519	2,577	2,769	2,843	2,857	2,988	2,930	3,034	3,233	3,247	3,279	3,299	3,197	3,218	3,087	2,830	2,499	2,365	2,234	2,056	2,010	2,084	1,983	1,981	1,998	1,928	2,138	2,314	
Angus	108,790	1,099	1,149	1,146	1,078	1,163	1,167	1,181	1,269	1,331	1,276	1,299	1,355	1,361	1,432	1,450	1,372	1,342	1,284	1,228	1,150	1,136	1,044	948	1,013	1,000	933	954	958	914	985	1,024	
Argyll & Bute	90,870	787	855	767	843	824	882	1,009	1,022	1,082	1,094	1,073	1,151	1,159	1,197	1,165	1,196	1,187	1,100	989	985	883	902	850	727	800	835	677	659	736	816	846	
Clackmannanshire	48,630	521	516	493	529	525	530	553	576	604	631	625	624	698	686	676	686	642	702	658	568	533	529	514	520	567	531	499	485	494	526	543	
Dumfries & Galloway	148,340	1,435	1,379	1,399	1,333	1,367	1,433	1,493	1,702	1,612	1,760	1,765	1,860	1,856	1,919	1,927	1,865	1,833	1,834	1,646	1,469	1,415	1,259	1,166	1,210	1,310	1,315	1,255	1,181	1,104	1,322	1,310	
Dundee City	142,360	1,609	1,506	1,430	1,371	1,357	1,293	1,382	1,486	1,569	1,518	1,417	1,486	1,643	1,615	1,756	1,673	1,668	1,925	2,350	2,676	2,691	2,506	2,355	2,398	2,517	2,464	2,293	1,701	1,560	1,542	1,569	
East Ayrshire	119,400	1,247	1,290	1,240	1,193	1,273	1,241	1,263	1,368	1,352	1,350	1,433	1,559	1,603	1,675	1,675	1,648	1,687	1,592	1,558	1,510	1,413	1,306	1,274	1,329	1,263	1,267	1,201	1,177	1,079	1,334	1,347	
East Dunbartonshire	105,960	919	977	1,064	1,047	1,084	1,123	1,273	1,331	1,273	1,373	1,354	1,443	1,460	1,535	1,547	1,515	1,501	1,429	1,332	1,318	1,390	1,240	1,263	1,185	1,142	1,113	1,051	787	892	813	742	
East Lothian	91,800	1,007	1,053	966	1,015	1,005	1,120	1,124	1,182	1,269	1,204	1,192	1,242	1,231	1,326	1,278	1,200	1,154	1,149	1,077	972	932	763	800	750	749	696	626	686	739	802	937	
East Renfrewshire	89,600	933	973	992	994	1,035	1,081	1,151	1,199	1,260	1,182	1,279	1,297	1,280	1,302	1,249	1,296	1,364	1,195	1,153	1,115	1,108	1,044	959	876	918	850	750	686	616	706	627	
Edinburgh, City of	457,830	4,527	4,412	4,175	4,095	4,038	4,158	4,284	4,360	4,252	4,449	4,394	4,468	4,598	4,826	4,787	4,638	4,774	5,323	6,030	7,422	8,491	8,478	9,000	9,399	9,420	9,544	8,655	7,737	7,435	7,585	7,622	
Eilean Siar	26,370	218	268	270	255	243	281	280	277	326	329	300	326	316	361	341	369	363	339	266	233	203	172	188	236	251	259	193	242	298	247		
Falkirk	149,150	1,768	1,676	1,693	1,545	1,685	1,646	1,734	1,777	1,822	1,706	1,821	1,797	1,934	1,885	2,029	1,850	1,776	1,986	1,822	1,740	1,866	1,492	1,568	1,767	1,793	1,753	1,733	1,717	1,624	1,754	1,889	
Fife	356,740	3,833	3,847	3,764	3,644	3,888	3,743	4,015	4,033	4,082	4,147	4,313	4,402	4,520	4,555	4,674	4,597	4,641	4,908	4,756	5,081	4,909	4,736	4,481	4,250	4,154	4,208	3,814	3,489	3,424	3,903	3,801	
Glasgow City	578,790	6,743	6,346	6,000	5,784	5,694	5,709	5,688	5,887	6,139	5,880	6,079	6,049	6,371	6,787	6,615	6,593	6,875	7,519	8,382	9,713	10,471	10,188	10,675	10,390	10,910	10,879	10,148	9,475	8,911	9,325	9,160	
Highland	213,590	2,193	2,229	2,134	2,118	2,283	2,160	2,455	2,501	2,529	2,536	2,595	2,665	2,752	2,828	2,855	2,760	2,739	2,574	2,336	2,110	2,041	1,866	1,692	1,854	2,240	2,149	2,117	1,912	1,946	2,176	2,231	
Inverclyde	82,130	912	857	833	769	828	854	898	923	976	986	982	989	977	1,111	1,088	1,098	1,071	1,145	1,058	1,138	1,111	1,018	1,009	965	984	1,007	879	837	793	804	861	
Midlothian	79,190	860	889	878	807	928	940	988	978	1,017	977	1,021	1,023	995	1,172	1,141	1,065	1,052	1,133	1,058	1,015	894	872	822	827	733	747	723	646	729	754	776	
Moray	86,590	882	818	826	766	897	934	966	1,054	1,065	1,068	1,093	1,102	1,144	1,222	1,178	1,176	1,209	1,182	1,089	896	966	870	817	828	823	853	849	778	780	924	899	
North Ayrshire	135,830	1,383	1,438	1,449	1,429	1,431	1,421	1,441	1,530	1,619	1,667	1,719	1,775	1,779	1,816	1,948	1,834	1,851	1,882	1,749	1,684	1,648	1,466	1,515	1,528	1,506	1,418	1,375	1,273	1,207	1,426	1,357	
North Lanarkshire	323,420	3,913	3,896	3,736	3,757	3,703	3,675	3,994	3,979	4,162	4,029	3,923	4,116	4,034	4,411	4,402	4,256	4,284	4,194	4,289	4,408	4,161	4,113	4,204	4,194	4,220	3,856	3,642	3,408	4,045	3,944		
Orkney Islands	19,590	196	172	171	183	158	191	225	202	253	250	265	269	241	288	288	303	265	258	209	180	189	156	146	141	176	161	185	175	143	182	200	
Perth & Kinross	138,590	1,361	1,391	1,343	1,354	1,488	1,452	1,506	1,588	1,658	1,553	1,628	1,773	1,770	1,803	1,849	1,624	1,769	1,735	1,587	1,435	1,375	1,480	1,278	1,297	1,369	1,222	1,271	1,196	1,182	1,192	1,294	
Renfrewshire	170,000	1,901	1,852	1,729	1,801	1,846	1,807	1,885	1,922	2,023	1,948	1,985	2,064	2,122	2,188	2,241	2,225	2,103	2,217	2,219	2,170	2,132	1,948	2,080	2,004	2,210	2,057	1,909	1,847	1,740	1,683	1,829	
Scottish Borders	109,730	1,097	1,124	1,105	1,170	1,136	1,212	1,203	1,196	1,291	1,366	1,344	1,319	1,451	1,423	1,453	1,420	1,306	1,282	1,112	1,032	999	911	898	821	906	876	882	820	873	931	1,069	
Shetland Islands	22,000	225	243	262	230	250	296	248	281	289	281	312	293	333	343	334	343	316	272	236	209	219	183	180	197	236	237	269	217	285	230	285	
South Ayrshire	111,780	1,035	1,032	978	1,053	1,052	1,056	1,145	1,212	1,215	1,215	1,244	1,331	1,348	1,411	1,369	1,474	1,392	1,373	1,325	1,277	1,290	1,262	1,046	1,107	1,201	997	1,080	961	915	925	1,084	
South Lanarkshire	306,280	3,296	3,339	3,190	3,272	3,197	3,430	3,563	3,491	3,733	3,628	3,645	3,948	3,925	4,108	4,087	3,948	3,791	4,001	3,838	3,866	3,999	3,844	3,628	3,524	3,797	3,673	3,358	3,248	3,013	3,329	3,489	
Stirling	86,930	917	952	936	878	958	1,001	1,078	1,068	1,079	1,015	1,081	1,100	1,134	1,207	1,150	1,133	1,081	1,467	1,315	1,379	1,401	1,287	1,123	1,034	987	925	859	684	780	720	820	
West Dunbartonshire	91,400	960	947	939	905	905	977	989	1,033	1,094	1,056	1,070	1,137	1,183	1,236	1,202	1,224	1,213	1,273	1,228	1,339	1,348	1,273	1,221	1,173	1,224	1,045	1,021	944	958	1,038	1,016	
West Lothian	163,780	2,090	2,113	1,988	2,020	1,964	2,054	2,252	2,155	2,146	2,212	2,167	2,193	2,290	2,251	2,287	2,188	2,208	2,174	2,189	2,029	1,896	1,734	1,720	1,818	1,890	1,839	1,820	1,753	1,775	2,034	2,032	
NHS Board areas																																	
Argyll & Clyde	414,022	4,360	4,303	4,065	4,106	4,139	4,295	4,605	4,678	4,966	4,876	4,899	5,087	5,231	5,440	5,457	5,483	5,380	5,475	5,252	5,275	5,105	4,808	4,860	4,573	4,849	4,681	4,196	4,028	3,952	4,027	4,253	
Ayrshire & Arran	367,010	3,665	3,760	3,667	3,675	3,756	3,718	3,849	4,110	4,186	4,232	4,396	4,665	4,730	4,902	4,992	4,956	4,930	4,847	4,632	4,471	4,351	4,034	3,835	3,964	3,970	3,682	3,656	3,411	3,201	3,685	3,788	
Borders	109,730	1,097	1,124	1,105	1,170	1,136	1,212	1,203	1,196	1,291	1,366	1,344	1,319	1,451	1,423	1,453	1,420	1,306	1,282	1,112	1,032	99											

Table 2 (continued)

MALES

Area	Age																																
	All Ages	0	1	2	3	4	5	6	7	8	9	10	11	12	13	14	15	16	17	18	19	20	21	22	23	24	25	26	27	28	29	30	
SCOTLAND	2,456,109	28,082	27,839	26,726	26,235	26,659	27,666	28,829	29,332	30,427	30,004	30,513	31,398	32,137	33,313	33,601	32,777	32,863	34,188	33,650	34,448	34,875	33,021	32,583	32,574	34,086	33,408	31,318	28,254	27,470	29,030	29,086	
Council areas																																	
Aberdeen City	101,206	1,054	1,024	1,009	940	999	1,024	1,043	1,023	1,056	1,042	1,079	1,083	1,158	1,179	1,125	1,074	1,161	1,201	1,289	1,490	1,510	1,591	1,665	1,792	1,969	2,149	1,794	1,676	1,704	1,499	1,463	
Aberdeenshire	115,460	1,297	1,310	1,282	1,248	1,326	1,472	1,457	1,517	1,577	1,509	1,559	1,673	1,663	1,602	1,685	1,618	1,640	1,578	1,589	1,351	1,283	1,230	1,140	1,090	1,137	1,031	1,028	984	934	1,026	1,097	
Angus	52,538	559	594	574	550	583	602	611	637	696	633	646	716	685	706	810	719	675	665	633	642	630	595	489	506	527	468	509	464	439	489	488	
Argyll & Bute	44,827	411	444	407	414	420	444	483	534	566	540	573	582	555	603	596	540	637	579	543	600	518	568	509	440	489	500	404	369	392	400	422	
Clackmannanshire	23,498	277	268	256	279	258	261	300	281	306	309	318	300	349	348	323	342	335	343	335	320	280	287	275	256	280	255	250	211	228	263	265	
Dumfries & Galloway	71,728	747	688	713	694	717	743	790	837	804	925	885	953	921	977	966	989	965	957	879	784	774	639	611	589	704	613	602	559	565	627	616	
Dundee City	67,546	841	797	743	698	701	650	708	768	795	794	750	776	852	792	871	864	875	956	1,079	1,256	1,290	1,191	1,185	1,197	1,305	1,337	1,156	872	794	734	747	
East Ayrshire	57,550	636	664	612	573	653	617	631	748	706	711	781	778	818	843	803	851	886	852	786	787	712	671	661	644	611	626	590	610	522	644	672	
East Dunbartonshire	51,114	491	530	542	539	546	583	667	714	641	714	695	761	764	760	823	800	798	757	718	687	731	665	652	638	644	625	587	417	464	372	331	
East Lothian	44,044	551	510	493	524	466	562	579	576	642	623	604	644	618	681	641	617	565	642	603	521	487	400	411	351	410	351	333	314	325	362	445	
East Renfrewshire	42,697	464	500	521	501	536	563	619	644	616	615	681	644	618	675	644	683	725	617	610	564	573	581	486	449	494	463	359	351	299	325	270	
Edinburgh, City of	220,094	2,370	2,300	2,182	2,144	2,068	2,133	2,174	2,211	2,282	2,291	2,288	2,273	2,434	2,497	2,484	2,321	2,493	2,688	2,993	3,156	3,882	3,839	4,272	4,492	4,576	4,709	4,375	3,858	3,779	3,809	3,753	
Eilean Siar	12,970	108	118	140	126	110	159	146	139	159	160	145	159	169	193	179	194	187	169	166	140	134	107	109	98	105	121	135	100	121	141	135	
Falkirk	72,132	904	873	870	805	847	880	871	923	981	872	893	927	999	963	1,027	932	891	1,014	999	959	991	728	701	889	916	906	800	823	807	839	906	
Fife	171,798	1,927	1,919	1,919	1,850	1,961	2,000	2,116	1,951	2,083	2,150	2,181	2,211	2,256	2,368	2,413	2,358	2,330	2,488	2,378	2,617	2,562	2,406	2,178	2,197	2,076	2,142	1,881	1,691	1,632	1,904	1,827	
Glasgow City	276,883	3,469	3,275	3,061	2,953	2,896	2,970	2,877	3,003	3,143	3,022	3,098	3,115	3,208	3,412	3,373	3,472	3,529	3,975	4,234	4,703	5,080	4,875	5,213	5,136	5,354	5,362	5,196	4,828	4,490	4,685	4,615	
Highland	104,423	1,142	1,132	1,078	1,087	1,175	1,120	1,324	1,311	1,340	1,259	1,333	1,352	1,353	1,436	1,469	1,446	1,425	1,378	1,278	1,184	1,178	1,083	909	918	1,162	1,088	1,090	962	991	1,116	1,124	
Inverclyde	39,139	479	440	427	392	428	450	451	508	510	494	495	471	509	582	570	543	570	581	562	586	565	525	502	479	505	505	430	438	410	389	408	
Midlothian	37,562	440	468	463	419	438	457	467	502	486	494	530	516	514	592	581	533	561	574	512	504	461	441	428	417	357	356	333	289	337	331	359	
Moray	43,516	433	401	422	429	443	500	498	554	541	539	573	568	569	627	627	602	646	611	611	538	577	515	467	472	479	519	475	442	422	490	443	
North Ayrshire	64,293	707	736	760	711	693	737	714	764	834	840	883	895	930	1,020	960	961	986	907	842	820	714	768	767	767	663	655	589	565	652	596		
North Lanarkshire	155,270	2,030	2,010	1,890	1,911	1,861	1,874	2,080	1,978	2,134	2,060	2,014	2,129	2,082	2,284	2,260	2,167	2,134	2,227	2,113	2,150	2,183	2,117	2,145	2,154	2,111	2,099	1,926	1,720	1,636	1,937	1,922	
Orkney Islands	9,641	99	88	80	82	79	88	131	114	142	142	132	123	103	144	146	163	143	135	99	96	111	84	81	69	93	87	89	85	65	95	91	
Perth & Kinross	67,150	696	724	688	700	728	749	777	839	830	757	808	928	893	954	941	871	908	911	840	755	693	837	704	684	749	640	688	621	577	613	641	
Renfrewshire	81,183	962	938	881	903	914	905	965	985	1,083	978	1,014	1,055	1,108	1,066	1,156	1,153	1,050	1,153	1,154	1,106	1,123	989	1,036	1,012	1,142	1,000	932	887	863	873	877	
Scottish Borders	53,074	574	588	563	579	601	592	632	581	672	692	682	667	738	723	728	721	694	669	560	544	500	439	440	412	459	449	437	407	443	427	506	
Shetland Islands	11,061	129	126	136	127	123	161	109	142	144	140	163	156	172	186	165	168	147	140	146	117	129	99	94	111	131	126	138	110	133	129	149	
South Ayrshire	53,278	504	528	504	546	556	573	579	607	610	602	633	645	694	695	704	739	709	702	680	674	676	636	553	547	605	507	566	431	412	465	514	
South Lanarkshire	146,261	1,678	1,715	1,565	1,639	1,604	1,750	1,791	1,786	1,888	1,888	1,859	1,990	1,993	2,090	2,127	2,052	1,937	2,114	2,014	2,013	2,078	1,956	1,855	1,800	1,888	1,884	1,686	1,552	1,464	1,616	1,636	
Stirling	41,521	468	507	484	464	468	512	567	562	541	512	544	574	585	599	566	588	546	744	643	680	679	646	592	521	520	418	448	283	341	300	372	
West Dunbartonshire	43,294	519	490	480	432	456	486	501	529	575	573	535	623	597	659	618	614	607	653	666	668	670	642	640	571	594	503	518	450	441	486	487	
West Lothian	79,358	1,116	1,074	981	976	1,005	1,049	1,171	1,064	1,046	1,124	1,139	1,111	1,225	1,147	1,160	1,083	1,133	1,129	1,117	1,054	995	925	812	876	927	906	908	861	875	992	909	
NHS Board areas																																	
Argyll & Clyde	199,084	2,255	2,202	2,074	2,042	2,077	2,158	2,327	2,446	2,600	2,459	2,514	2,568	2,659	2,741	2,806	2,726	2,803	2,850	2,775	2,774	2,699	2,571	2,521	2,368	2,545	2,402	2,134	2,034	1,984	1,990	2,072	
Ayrshire & Arran	175,121	1,847	1,928	1,876	1,830	1,902	1,927	1,924	2,119	2,150	2,153	2,297	2,318	2,447	2,468	2,527	2,550	2,556	2,540	2,373	2,303	2,208	2,021	1,982	1,958	1,983	1,796	1,811	1,630	1,499	1,761	1,782	
Borders	53,073	574	588	5																													

Table 2 (continued)

FEMALES

Area	All Ages	Age																															
		0	1	2	3	4	5	6	7	8	9	10	11	12	13	14	15	16	17	18	19	20	21	22	23	24	25	26	27	28	29	30	
SCOTLAND	2,638,691	26,394	26,150	25,654	25,408	26,053	25,887	27,299	28,064	28,662	28,602	29,028	30,127	30,840	32,114	32,048	31,126	31,021	31,961	31,920	33,319	34,216	32,578	32,363	32,352	32,899	32,458	30,319	28,615	27,770	30,075	30,914	
Council areas																																	
Aberdeen City	104,704	1,052	921	972	946	931	893	976	934	953	948	1,010	1,053	1,064	1,050	1,184	1,117	1,076	1,324	1,517	1,778	1,829	1,753	1,912	1,800	1,677	1,669	1,494	1,331	1,311	1,364	1,373	
Aberdeenshire	117,970	1,206	1,195	1,221	1,271	1,251	1,297	1,386	1,340	1,411	1,421	1,475	1,560	1,584	1,677	1,614	1,579	1,578	1,509	1,327	1,148	1,082	1,004	916	920	947	952	953	1,014	994	1,112	1,217	
Angus	56,252	540	555	572	528	580	565	570	632	635	643	653	639	676	726	640	653	667	619	595	508	506	449	459	507	473	465	445	494	475	496	536	
Argyll & Bute	46,043	376	411	360	429	404	438	526	488	516	554	500	569	604	594	569	656	550	521	446	385	365	334	341	287	311	335	273	290	344	416	424	
Clackmannanshire	25,132	244	248	237	250	267	269	253	295	298	322	307	324	349	338	353	344	307	359	323	248	253	242	239	264	287	276	249	274	266	263	278	
Dumfries & Galloway	76,612	688	691	686	639	650	690	703	865	808	835	880	907	935	942	961	876	868	877	767	685	641	620	555	621	606	702	653	622	539	695	694	
Dundee City	74,814	768	709	687	673	656	643	674	718	774	724	667	710	791	823	885	809	793	969	1,271	1,420	1,401	1,315	1,170	1,201	1,212	1,127	1,137	829	766	808	822	
East Ayrshire	61,850	611	626	628	620	624	632	620	646	639	652	781	785	832	872	797	801	740	772	723	701	635	613	685	652	641	611	567	557	690	675		
East Dunbartonshire	54,846	428	447	522	508	538	540	606	617	632	659	659	682	696	775	724	715	703	672	614	631	659	575	611	547	498	488	464	370	428	441	411	
East Lothian	47,756	456	543	473	491	539	558	545	606	627	581	588	598	613	645	637	583	589	507	474	451	445	363	389	399	339	345	293	372	414	440	492	
East Renfrewshire	46,903	469	473	471	493	499	518	532	555	614	567	598	653	662	627	605	613	639	578	543	551	535	463	473	427	424	387	391	335	317	381	357	
Edinburgh, City of	237,736	2,157	2,112	1,993	1,951	1,970	2,025	2,110	2,149	1,970	2,158	2,106	2,195	2,164	2,329	2,303	2,317	2,281	2,635	3,037	3,906	4,609	4,639	4,728	4,907	4,844	4,835	4,280	3,879	3,656	3,776	3,869	
Eilean Siar	13,400	110	150	130	129	133	122	134	138	167	169	155	167	147	168	162	175	176	170	100	93	99	66	63	90	131	130	124	93	121	157	112	
Falkirk	77,018	864	803	823	740	838	766	863	854	841	834	928	870	935	922	1,002	918	885	972	823	781	875	764	867	878	877	847	933	894	817	915	983	
Fife	184,942	1,906	1,868	1,845	1,794	1,927	1,743	1,899	2,082	1,999	1,997	2,132	2,191	2,264	2,187	2,261	2,319	2,311	2,420	2,378	2,464	2,347	2,330	2,303	2,053	2,078	2,066	1,933	1,798	1,792	1,999	1,974	
Glasgow City	301,907	3,274	3,071	2,939	2,831	2,798	2,739	2,811	2,884	2,998	2,858	2,981	2,934	3,163	3,375	3,242	3,121	3,346	3,544	4,148	5,010	5,391	5,313	5,462	5,254	5,556	5,517	4,952	4,647	4,421	4,640	4,545	
Highland	109,167	1,051	1,097	1,056	1,031	1,108	1,040	1,131	1,190	1,189	1,277	1,262	1,313	1,399	1,392	1,386	1,314	1,314	1,196	1,058	926	863	783	783	936	1,078	1,061	1,027	950	955	1,060	1,107	
Inverclyde	42,991	433	417	406	377	400	404	447	415	466	492	487	518	468	529	518	555	501	564	496	552	546	493	507	486	479	502	449	399	383	415	453	
Midlothian	41,628	420	421	415	388	490	483	521	476	531	483	491	507	481	580	560	532	491	559	491	511	433	431	394	410	376	391	390	357	392	423	417	
Moray	43,074	449	417	404	337	454	434	468	500	524	529	520	534	575	595	551	574	563	571	478	358	389	355	350	356	344	334	374	336	358	434	456	
North Ayrshire	71,537	676	702	689	718	738	684	727	766	785	827	836	880	844	886	928	874	890	896	842	842	828	752	747	761	739	755	720	684	642	774	761	
North Lanarkshire	168,150	1,883	1,886	1,846	1,842	1,801	1,914	2,001	2,028	1,969	1,909	1,987	1,952	2,127	2,142	2,035	2,122	2,057	2,281	2,139	2,225	2,044	1,968	2,050	2,083	2,121	1,930	1,922	1,772	2,108	2,022		
Orkney Islands	9,949	97	84	91	101	79	103	94	88	111	108	133	146	138	144	142	140	122	123	110	84	78	72	65	72	83	74	96	90	78	87	109	
Perth & Kinross	71,440	665	667	655	654	760	703	729	749	828	796	820	845	877	849	908	753	861	824	747	680	682	643	574	613	620	582	583	575	605	579	653	
Renfrewshire	88,817	939	914	848	898	932	902	920	937	940	970	971	1,009	1,014	1,122	1,085	1,072	1,053	1,064	1,065	1,064	1,009	959	1,044	992	1,068	1,057	977	960	877	810	952	
Scottish Borders	56,656	523	536	542	591	535	620	571	615	619	674	662	652	713	700	725	699	612	613	552	488	499	472	458	409	447	427	445	413	430	504	563	
Shetland Islands	10,939	96	117	126	103	127	135	139	139	145	141	149	137	161	157	169	175	169	132	90	92	84	86	86	105	111	131	107	152	101	136		
South Ayrshire	58,502	531	504	474	507	496	483	566	605	605	613	611	686	654	716	665	735	683	671	645	603	614	626	493	560	596	490	514	530	503	460	570	
South Lanarkshire	160,019	1,618	1,624	1,625	1,633	1,593	1,680	1,772	1,705	1,845	1,740	1,786	1,958	1,932	2,018	1,960	1,896	1,854	1,887	1,824	1,853	1,921	1,888	1,773	1,724	1,909	1,789	1,672	1,696	1,549	1,713	1,853	
Stirling	45,409	449	445	452	414	490	489	511	506	538	503	537	526	549	608	584	545	535	723	672	699	722	641	531	513	467	507	411	401	439	420	448	
West Dunbartonshire	48,106	441	457	459	473	449	491	488	504	519	483	535	514	586	577	584	610	606	620	562	671	678	631	581	602	630	542	503	494	517	552	529	
West Lothian	84,422	974	1,039	1,007	1,044	959	1,005	1,081	1,091	1,100	1,088	1,028	1,082	1,065	1,104	1,127	1,105	1,075	1,045	1,072	975	901	809	908	942	963	933	912	892	900	1,042	1,123	
NHS Board areas																																	
Argyll & Clyde	214,938	2,105	2,101	1,991	2,064	2,062	2,137	2,278	2,232	2,366	2,417	2,385	2,519	2,572	2,699	2,651	2,757	2,577	2,625	2,477	2,501	2,406	2,237	2,339	2,205	2,304	2,279	2,062	1,994	1,968	2,037	2,181	
Ayrshire & Arran	191,889	1,818	1,832	1,791	1,845	1,854	1,791	1,925	1,991	2,036	2,079	2,099	2,347	2,283	2,434	2,465	2,406	2,374	2,307	2,259	2,168	2,143	2,013	1,853	2,006	1,987	1,886	1,845	1,781	1,702	1,924	2,006	
Borders	56,657	523	536	542	591	535	620	571	615	619	674	662	652	713	700	725	699	612	613	552	488	499	472	458	408	447	427	445	413	430	504	563	
Dumfries & Galloway	76,612	688	691	686	639	650	690	703	865	808	835	880	907	935	942	961	876	868	877	767	685	641	620	555	621	606	702	653	622	539	695	694	
Fife	184,902	1,906	1,868	1,845	1,795	1,926	1,742	1,899	2,082	1,998	1,996	2,132	2,189	2,264	2,187	2,261	2,238	2,309	2,419	2,379	2,464	2,344	2,329	2,305	2,053	2,078	2,065	1,933	1,798	1,792	1,999	1,974	
Forth Valley	147,394	1,558	1,495	1,510	1,403	1,595	1,523	1,627	1,652	1,674	1,658	1,770	1,718	1,831	1,866	1,937	1,804	1,726	2,051	1,818	1,727	1,857</											

Table 2 (continued)

Area	Age																													PERSONS (continued)		
	31	32	33	34	35	36	37	38	39	40	41	42	43	44	45	46	47	48	49	50	51	52	53	54	55	56	57	58	59	60		
	61,097	65,443	69,964	74,132	73,754	76,876	78,616	80,396	79,529	82,038	81,998	81,389	80,199	78,890	76,797	76,026	74,287	72,558	70,685	68,049	67,477	66,212	64,035	65,376	66,185	68,245	70,527	76,445	58,930	56,574		
SCOTLAND																																
Council areas																																
Aberdeen City	2,900	3,001	3,058	3,129	2,988	3,151	2,990	3,154	3,018	3,166	3,124	3,114	3,091	2,934	3,167	3,064	2,982	2,897	2,859	2,820	2,728	2,523	2,561	2,556	2,587	2,713	2,699	2,921	2,156	1,828		
Aberdeenshire	2,599	2,859	3,005	3,510	3,453	3,744	3,681	3,873	3,903	4,012	4,035	3,973	3,829	3,837	3,706	3,762	3,820	3,659	3,645	3,564	3,682	3,410	3,279	3,421	3,409	3,517	3,643	3,869	3,067	2,736		
Angus	1,139	1,314	1,397	1,431	1,366	1,524	1,498	1,633	1,595	1,737	1,760	1,692	1,781	1,619	1,760	1,595	1,566	1,538	1,552	1,450	1,524	1,596	1,467	1,553	1,598	1,681	1,757	1,974	1,413	1,424		
Argyll & Bute	852	1,037	1,090	1,086	1,224	1,210	1,333	1,372	1,328	1,447	1,397	1,391	1,365	1,383	1,380	1,329	1,326	1,333	1,335	1,228	1,264	1,221	1,228	1,384	1,329	1,402	1,420	1,749	1,265	1,263		
Clackmannanshire	527	646	655	610	708	804	765	850	788	821	792	797	778	757	738	752	671	679	657	697	665	634	616	669	695	738	741	794	618	600		
Dumfries & Galloway	1,379	1,474	1,728	1,845	1,853	2,030	2,002	2,141	2,219	2,349	2,334	2,386	2,382	2,297	2,199	2,173	2,163	2,086	2,135	2,065	2,058	2,017	2,045	2,129	2,285	2,331	2,405	2,584	2,060	2,054		
Dundee City	1,539	1,609	1,691	1,891	1,793	1,882	1,775	1,891	1,977	2,027	2,023	2,114	2,053	2,069	2,016	1,936	1,963	1,912	1,752	1,744	1,651	1,660	1,659	1,603	1,697	1,786	1,809	2,094	1,531	1,540		
East Ayrshire	1,280	1,463	1,691	1,742	1,704	1,880	1,868	1,994	1,897	2,054	1,914	1,900	1,833	1,836	1,717	1,796	1,699	1,720	1,580	1,542	1,576	1,617	1,500	1,584	1,703	1,682	1,776	1,967	1,448	1,460		
East Dunbartonshire	877	993	1,093	1,186	1,328	1,391	1,464	1,570	1,559	1,713	1,761	1,821	1,836	1,788	1,734	1,816	1,731	1,789	1,639	1,553	1,512	1,525	1,377	1,450	1,505	1,513	1,522	1,683	1,338	1,324		
East Lothian	925	1,082	1,175	1,346	1,359	1,493	1,519	1,589	1,465	1,594	1,581	1,585	1,482	1,510	1,452	1,427	1,389	1,413	1,343	1,260	1,254	1,232	1,139	1,257	1,215	1,198	1,351	1,410	1,105	1,065		
East Renfrewshire	824	846	947	1,100	1,160	1,236	1,281	1,386	1,422	1,469	1,550	1,570	1,553	1,514	1,545	1,556	1,463	1,435	1,413	1,348	1,231	1,202	1,206	1,107	1,173	1,208	1,250	1,383	1,027	997		
Edinburgh, City of	7,343	7,256	7,993	7,617	7,089	6,985	7,240	7,221	6,889	7,029	6,796	6,976	6,681	6,668	6,372	6,257	6,076	6,126	5,646	5,450	5,293	5,226	5,125	5,204	5,269	5,424	5,387	6,087	4,361	4,107		
Eilean Siar	244	295	343	293	326	401	413	398	372	368	406	387	418	366	409	382	380	388	364	382	350	384	386	368	410	416	415	458	361	332		
Falkirk	1,997	2,090	2,229	2,321	2,261	2,416	2,517	2,534	2,404	2,508	2,461	2,390	2,403	2,320	2,262	2,132	2,135	2,073	1,993	1,875	1,892	1,888	1,844	2,018	2,013	2,025	2,076	2,285	1,682	1,665		
Fife	3,952	4,324	4,774	5,044	5,147	5,464	5,580	5,635	5,533	5,590	5,600	5,534	5,500	5,457	5,301	5,221	5,124	4,937	4,912	4,728	4,737	4,532	4,463	4,611	4,708	4,982	5,204	5,742	4,432	4,312		
Glasgow City	8,679	9,077	9,218	9,439	8,933	9,112	9,082	8,806	9,049	8,965	9,187	8,931	8,933	8,616	8,280	8,207	7,609	7,641	7,481	7,148	6,711	6,478	6,053	5,906	5,919	5,942	6,203	6,364	5,189	4,982		
Highland	2,246	2,476	2,646	2,792	2,852	2,869	3,105	3,255	3,309	3,533	3,530	3,431	3,259	3,458	3,338	3,270	3,282	3,193	3,170	3,126	3,184	3,217	3,155	3,170	3,178	3,349	3,512	3,468	2,804	2,743		
Inverclyde	828	1,003	1,026	1,043	1,088	1,127	1,217	1,295	1,293	1,281	1,378	1,430	1,413	1,292	1,309	1,245	1,202	1,238	1,187	1,100	1,065	1,048	1,030	1,184	1,088	1,070	1,121	1,187	1,010	900		
Midlothian	859	893	1,002	1,150	1,216	1,161	1,294	1,264	1,269	1,279	1,264	1,377	1,266	1,229	1,290	1,244	1,204	1,169	1,124	1,074	1,090	1,108	1,055	1,083	1,127	1,210	1,168	1,315	1,041	992		
Moray	985	1,082	1,224	1,312	1,282	1,398	1,367	1,437	1,419	1,376	1,366	1,466	1,364	1,356	1,283	1,235	1,230	1,200	1,236	1,133	1,179	1,179	1,073	1,194	1,231	1,164	1,267	1,379	1,042	1,033		
North Ayrshire	1,545	1,518	1,673	1,840	1,919	1,934	1,982	2,096	2,052	2,153	2,177	2,133	2,103	1,966	1,975	2,045	1,965	1,930	1,903	1,810	1,821	1,836	1,797	1,795	1,872	1,927	2,073	2,243	1,682	1,639		
North Lanarkshire	4,108	4,371	4,786	4,906	5,131	5,264	5,276	5,380	5,327	5,453	5,238	5,135	5,259	4,995	4,792	4,729	4,720	4,642	4,429	4,240	4,266	4,232	3,920	3,859	4,072	4,075	4,270	4,424	3,507	3,359		
Orkney Islands	176	216	222	260	290	249	310	337	336	311	326	327	298	314	301	284	275	316	295	278	294	300	281	289	263	299	308	328	252	242		
Perth & Kinross	1,452	1,507	1,702	1,761	1,732	1,891	2,070	2,090	2,122	2,225	2,241	2,245	2,136	2,167	1,941	2,135	2,061	1,957	1,919	1,922	1,938	2,031	1,843	1,920	2,027	2,045	2,192	2,350	1,874	1,780		
Renfrewshire	1,929	2,025	2,222	2,398	2,575	2,625	2,761	2,779	2,845	2,911	2,912	2,742	2,967	2,896	2,613	2,662	2,654	2,405	2,375	2,233	2,306	2,207	2,106	2,317	2,201	2,305	2,276	2,635	1,916	1,922		
Scottish Borders	1,030	1,161	1,394	1,466	1,539	1,626	1,696	1,748	1,760	1,763	1,784	1,877	1,737	1,757	1,718	1,762	1,704	1,598	1,567	1,513	1,542	1,507	1,479	1,547	1,555	1,635	1,730	1,976	1,500	1,382		
Shetland Islands	236	310	335	315	310	316	329	320	350	318	390	356	368	343	320	303	310	282	313	328	310	315	301	322	325	317	306	343	252	274		
South Ayrshire	1,098	1,172	1,412	1,462	1,453	1,380	1,571	1,606	1,605	1,764	1,766	1,638	1,773	1,774	1,660	1,688	1,728	1,642	1,605	1,572	1,555	1,588	1,555	1,549	1,557	1,711	1,667	1,904	1,494	1,516		
South Lanarkshire	3,570	3,933	4,118	4,467	4,404	4,773	4,834	4,874	4,787	4,919	5,153	4,990	4,924	4,874	4,914	4,775	4,724	4,621	4,491	4,323	4,306	4,112	4,043	3,886	3,879	4,080	4,179	4,508	3,478	3,361		
Stirling	788	976	1,113	1,212	1,296	1,259	1,317	1,304	1,381	1,404	1,426	1,389	1,333	1,378	1,318	1,257	1,241	1,175	1,135	1,099	1,163	1,144	1,133	1,162	1,165	1,174	1,252	1,416	1,054	939		
West Dunbartonshire	1,009	1,093	1,153	1,274	1,299	1,373	1,461	1,452	1,435	1,479	1,506	1,507	1,367	1,477	1,426	1,370	1,413	1,288	1,352	1,325	1,231	1,151	1,222	1,178	1,109	1,183	1,292	1,294	1,082	987		
West Lothian	2,182	2,341	2,549	2,884	2,676	2,908	3,018	3,112	2,821	3,020	2,820	2,785	2,714	2,643	2,561	2,617	2,477	2,276	2,278	2,119	2,099	2,092	2,094	2,101	2,021	2,143	2,256	2,311	1,889	1,816		
NHS Board areas																																
Argyll & Clyde	4,315	4,878	5,225	5,510	5,937	6,052	6,424	6,573	6,656	6,783	6,913	6,795	6,915	6,725	6,422	6,398	6,306	6,079	5,995	5,607	5,624	5,414	5,332	5,862	5,518	5,749	5,891	6,623	5,058	4,881		
Ayrshire & Arran	3,923	4,153	4,776	5,044	5,076	5,194	5,421	5,696	5,554	5,971	5,857	5,671	5,709	5,576	5,352	5,529	5,392	5,292	5,088	4,924	4,952	5,041	4,852	4,928	5,132	5,320	5,516	6,114	4,624	4,615		
Borders	1,030	1,161	1,394	1,466	1,539	1,626	1,696	1,748	1,760	1,763	1,784	1,877	1,737	1,757	1,718	1,762	1,704	1,598	1,567	1,513	1,542	1,507	1,479	1,547	1,556	1,635	1,730	1,976	1,500	1,382		
Dumfries & Galloway	1,379	1,474	1,728	1,845	1,853	2,030	2,002	2,141	2,219	2,349	2,334	2,386	2,382	2,297	2,199	2,173	2,163	2,086	2,135	2,065	2,058	2,017	2,045	2,129	2,285	2,331	2,405	2,584	2,060	2,054		
Fife	3,952	4,324	4,775	5,041	5,147	5,462	5,578	5,632	5,531	5,588	5,601</																					

Table 2 (continued)

MALES (continued)

Area	Age																														
	31	32	33	34	35	36	37	38	39	40	41	42	43	44	45	46	47	48	49	50	51	52	53	54	55	56	57	58	59	60	
SCOTLAND	29,689	31,635	33,424	35,584	35,466	37,021	37,574	39,024	38,090	39,529	39,260	38,989	39,097	38,154	37,426	36,858	36,022	35,297	34,763	33,416	33,212	32,640	31,541	32,114	32,670	33,665	34,705	37,520	28,975	27,568	
Council areas																															
Aberdeen City	1,469	1,593	1,590	1,586	1,463	1,605	1,515	1,684	1,482	1,535	1,560	1,575	1,544	1,442	1,576	1,483	1,491	1,456	1,450	1,447	1,423	1,330	1,287	1,306	1,337	1,343	1,375	1,467	1,086	870	
Aberdeenshire	1,187	1,342	1,357	1,646	1,663	1,819	1,803	1,906	1,928	1,959	1,956	1,939	1,910	1,821	1,899	1,982	1,836	1,841	1,768	1,843	1,679	1,641	1,760	1,734	1,830	1,893	1,934	1,551	1,381		
Angus	551	632	668	650	645	725	705	764	740	833	871	823	892	749	855	771	773	718	762	701	748	800	714	768	814	780	875	942	705	682	
Argyll & Bute	428	542	549	527	584	594	671	694	665	691	682	685	698	710	674	636	654	683	692	613	635	626	587	654	645	688	661	816	594	659	
Clackmannanshire	240	294	311	298	342	408	366	399	378	395	396	393	375	370	375	379	296	337	302	355	311	314	304	300	342	376	365	380	317	288	
Dumfries & Galloway	670	664	869	893	897	961	914	1,052	1,083	1,146	1,127	1,168	1,134	1,110	1,047	1,034	1,054	994	1,030	1,014	1,039	968	990	1,068	1,135	1,178	1,238	1,273	1,027	989	
Dundee City	722	747	807	892	854	871	796	876	921	919	964	973	926	921	959	924	933	918	851	862	843	759	815	802	768	915	870	1,016	736	766	
East Ayrshire	619	723	825	844	814	898	849	961	934	990	936	902	883	874	769	906	815	815	778	748	782	811	731	809	870	823	859	948	710	704	
East Dunbartonshire	413	444	474	543	635	646	690	716	698	827	789	851	856	849	815	874	840	838	806	764	713	734	660	712	727	699	753	825	657	623	
East Lothian	423	520	527	636	624	726	692	744	715	793	717	754	733	741	680	706	665	713	681	599	651	604	546	600	584	566	649	699	561	526	
East Renfrewshire	394	354	450	484	538	576	535	625	669	655	717	740	731	746	718	794	706	710	722	640	580	593	589	529	584	577	599	656	538	471	
Edinburgh, City of	3,682	3,609	3,536	3,823	3,571	3,451	3,635	3,588	3,343	3,491	3,269	3,351	3,241	3,283	3,098	3,052	2,962	2,939	2,890	2,732	2,646	2,574	2,583	2,519	2,534	2,647	2,670	2,966	2,052	2,020	
Eilean Siar	126	146	184	150	149	193	199	215	177	190	203	188	213	176	215	211	191	205	172	191	189	210	189	190	212	223	232	235	193	169	
Falkirk	996	984	1,077	1,089	1,095	1,155	1,194	1,243	1,148	1,255	1,204	1,148	1,180	1,122	1,146	1,031	1,103	1,006	962	887	937	917	887	950	998	997	1,010	1,152	821	827	
Fife	1,938	2,109	2,295	2,372	2,515	2,646	2,678	2,793	2,654	2,691	2,726	2,628	2,667	2,708	2,656	2,540	2,450	2,446	2,384	2,299	2,339	2,245	2,195	2,239	2,296	2,393	2,496	2,843	2,167	2,131	
Glasgow City	4,331	4,546	4,556	4,681	4,404	4,443	4,290	4,291	4,337	4,288	4,275	4,329	4,337	4,046	4,026	3,930	3,582	3,778	3,571	3,634	3,303	3,260	2,984	2,976	2,933	2,993	3,117	3,123	2,537	2,424	
Highland	1,082	1,186	1,255	1,326	1,303	1,328	1,507	1,565	1,606	1,675	1,684	1,674	1,638	1,655	1,674	1,569	1,600	1,574	1,591	1,544	1,627	1,567	1,555	1,561	1,591	1,706	1,763	1,754	1,418	1,397	
Inverclyde	389	490	501	508	509	507	519	622	582	636	635	704	697	639	615	563	598	607	589	540	500	519	502	590	540	526	536	580	495	434	
Midlothian	393	421	454	524	608	514	585	619	578	598	574	597	596	571	621	578	565	534	564	519	527	532	527	502	557	594	562	622	492	508	
Moray	537	583	613	652	664	746	727	718	733	680	714	757	697	688	661	641	630	576	636	540	573	598	548	585	616	587	630	648	529	486	
North Ayrshire	777	696	763	828	914	911	918	950	925	1,015	1,016	936	1,030	941	925	977	905	914	905	885	866	864	879	882	918	916	992	1,078	841	793	
North Lanarkshire	1,984	2,116	2,190	2,346	2,451	2,511	2,513	2,632	2,558	2,601	2,563	2,368	2,594	2,406	2,252	2,243	2,217	2,281	2,124	2,020	2,058	2,071	1,899	1,850	2,007	1,978	2,038	2,201	1,706	1,590	
Orkney Islands	77	113	99	103	144	129	163	178	168	146	170	176	160	160	149	143	145	150	138	141	166	143	139	148	126	172	146	174	120	115	
Perth & Kinross	689	708	796	796	825	879	959	1,007	1,053	1,052	1,120	1,110	1,030	1,051	959	1,051	1,021	938	908	950	925	994	890	928	1,016	986	1,122	1,146	947	848	
Renfrewshire	882	934	993	1,130	1,201	1,250	1,325	1,293	1,315	1,408	1,405	1,301	1,439	1,327	1,272	1,300	1,268	1,173	1,163	1,060	1,102	1,079	1,036	1,087	1,083	1,098	1,102	1,322	899	898	
Scottish Borders	476	529	663	683	760	805	846	844	855	885	847	909	887	870	835	827	834	758	779	777	779	741	735	771	769	802	845	960	745	686	
Shetland Islands	99	162	170	157	155	153	154	165	179	164	189	194	188	176	165	150	151	137	168	155	168	150	167	162	172	174	175	200	133	131	
South Ayrshire	564	584	688	715	673	650	747	792	730	855	840	738	867	859	820	811	809	772	785	783	745	776	761	751	754	863	809	937	710	731	
South Lanarkshire	1,693	1,849	1,911	2,119	2,088	2,293	2,311	2,296	2,275	2,322	2,366	2,361	2,330	2,373	2,399	2,265	2,336	2,162	2,166	2,034	2,084	2,031	1,978	1,948	1,884	1,996	1,981	2,178	1,669	1,624	
Stirling	376	427	517	565	576	546	609	609	653	664	689	628	653	660	669	662	606	589	565	533	531	557	575	571	587	593	613	693	547	429	
West Dunbartonshire	481	517	535	598	587	640	716	681	637	717	693	709	647	707	726	644	685	609	655	641	572	575	613	570	539	593	601	627	558	487	
West Lothian	1,001	1,071	1,201	1,420	1,215	1,442	1,443	1,502	1,371	1,453	1,363	1,363	1,295	1,314	1,254	1,264	1,155	1,131	1,133	1,040	1,007	1,019	1,035	1,026	998	1,053	1,128	1,125	914	881	
NHS Board areas																															
Argyll & Clyde	2,024	2,369	2,466	2,617	2,776	2,889	3,049	3,131	3,097	3,278	3,306	3,294	3,404	3,246	3,110	3,062	3,066	3,011	3,005	2,730	2,704	2,662	2,607	2,811	2,701	2,824	2,820	3,234	2,434	2,394	
Ayrshire & Arran	1,960	2,003	2,276	2,387	2,401	2,459	2,514	2,703	2,589	2,860	2,792	2,576	2,780	2,674	2,514	2,694	2,529	2,501	2,468	2,416	2,393	2,451	2,371	2,442	2,542	2,602	2,660	2,963	2,261	2,228	
Borders	476	529	663	683	760	805	846	844	855	885	847	909	887	870	835	827	834	758	779	777	779	741	735	771	769	802	845	960	745	686	
Dumfries & Galloway	670	664	869	893	897	961	914	1,052	1,083	1,146	1,127	1,168	1,134	1,110	1,047	1,034	1,054	994	1,030	1,014	1,039	968	990	1,068	1,135	1,178	1,238	1,273	1,027	989	
Fife	1,938	2,109	2,296	2,370	2,515	2,646	2,678	2,792	2,654	2,691	2,726	2,625	2,666	2,707	2,656	2,539	2,450	2,446	2,384	2,299	2,338	2,244	2,194	2,239	2,294	2,393	2,495	2,843	2,167	2,131	
Forth Valley	1,610	1,705	1,903	1,950	2,011	2,107	2,162	2,251	2,175	2,310	2,286	2,171	2,199	2,151	2,188	2,072	2,004	1,931	1,826	1,774	1,779	1,781	1,764	1,818	1,925	1,963	1,982	2,225	1,682	1,544	
Grampian	3,193	3,518	3,560	3,884	3,790	4,170	4,045	4,308	4,143	4,174	4,230	4,288	4,180	4,040	4,058	4,023	4,103	3,868	3,927	3,755	3,839	3,607	3,476	3,651	3,687	3,760	3,898	4,049	3,166	2,737	
Greater Glasgow	5,693	5,917	6,064	6,356	6,177	6,340	6,280	6,320	6,313	6,467	6,410	6,560	6,551	6,274	6,263	6,253	5,825	5,896	5,												

Table 2 (continued)

FEMALES (continued)

Area	Age																														
	31	32	33	34	35	36	37	38	39	40	41	42	43	44	45	46	47	48	49	50	51	52	53	54	55	56	57	58	59	60	
SCOTLAND	31,408	33,808	36,540	38,548	38,288	39,855	41,042	41,372	41,439	42,509	42,738	42,400	41,102	40,736	39,371	39,168	38,265	37,261	35,922	34,633	34,265	33,572	32,494	33,262	33,515	34,580	35,822	38,925	29,955	29,006	
Council areas																															
Aberdeen City	1,431	1,408	1,468	1,543	1,525	1,546	1,475	1,470	1,536	1,631	1,564	1,539	1,547	1,492	1,591	1,581	1,491	1,441	1,409	1,373	1,305	1,193	1,274	1,250	1,250	1,370	1,324	1,454	1,070	958	
Aberdeenshire	1,412	1,517	1,648	1,864	1,790	1,925	1,878	1,967	1,975	2,053	2,079	2,017	1,890	1,927	1,885	1,863	1,838	1,823	1,804	1,796	1,839	1,731	1,638	1,661	1,675	1,687	1,750	1,935	1,516	1,355	
Angus	588	682	729	781	721	799	793	869	855	904	889	869	889	870	905	824	793	820	790	749	776	796	753	785	784	901	882	1,032	708	742	
Argyll & Bute	424	495	541	559	640	616	662	678	663	756	715	706	667	673	706	693	672	650	643	615	629	595	641	730	684	714	759	933	671	604	
Clackmannanshire	287	352	344	312	366	396	399	451	410	426	396	404	403	387	363	373	375	342	355	342	354	320	312	369	353	362	376	414	301	312	
Dumfries & Galloway	709	810	859	952	956	1,069	1,088	1,089	1,136	1,203	1,207	1,218	1,248	1,187	1,152	1,139	1,109	1,092	1,105	1,051	1,019	1,049	1,055	1,061	1,150	1,153	1,167	1,311	1,033	1,065	
Dundee City	817	862	884	999	939	1,011	979	1,015	1,056	1,108	1,059	1,141	1,127	1,148	1,057	1,012	1,030	994	901	882	808	901	844	801	929	871	939	1,078	795	774	
East Ayrshire	661	740	866	898	890	982	1,019	1,033	963	1,064	978	998	950	962	948	890	884	905	802	794	794	806	769	775	833	859	917	1,019	738	756	
East Dunbartonshire	464	549	619	643	693	745	774	854	861	886	972	970	980	939	919	942	891	951	833	789	799	791	717	738	778	814	769	858	681	701	
East Lothian	502	562	648	710	735	767	827	845	750	801	864	831	749	769	772	721	724	700	662	661	603	628	593	657	631	632	702	711	544	539	
East Renfrewshire	430	492	497	616	622	660	746	761	753	814	833	830	822	768	827	762	757	725	691	708	651	609	617	578	589	631	651	727	489	526	
Edinburgh, City of	3,661	3,647	3,757	3,794	3,518	3,534	3,605	3,633	3,546	3,538	3,527	3,625	3,440	3,385	3,274	3,205	3,114	3,187	2,756	2,718	2,647	2,652	2,542	2,685	2,735	2,777	2,717	3,121	2,309	2,087	
Eilean Siar	118	149	159	143	177	208	214	183	195	178	203	199	205	190	194	171	189	183	192	191	161	174	197	178	198	193	183	223	168	163	
Falkirk	1,001	1,106	1,152	1,232	1,166	1,261	1,323	1,291	1,256	1,253	1,257	1,242	1,223	1,198	1,116	1,101	1,032	1,067	1,031	988	955	971	957	1,068	1,015	1,028	1,066	1,133	861	838	
Fife	2,014	2,215	2,479	2,672	2,632	2,818	2,902	2,842	2,879	2,899	2,874	2,906	2,833	2,749	2,645	2,681	2,674	2,491	2,528	2,429	2,398	2,287	2,268	2,372	2,412	2,589	2,708	2,899	2,265	2,181	
Glasgow City	4,348	4,531	4,662	4,758	4,529	4,669	4,792	4,515	4,712	4,677	4,912	4,602	4,596	4,570	4,254	4,277	3,863	3,910	3,514	3,408	3,218	3,069	2,930	2,986	2,949	3,086	3,241	2,652	2,558		
Highland	1,164	1,290	1,391	1,466	1,549	1,541	1,598	1,690	1,703	1,858	1,846	1,757	1,621	1,803	1,664	1,701	1,682	1,619	1,579	1,582	1,557	1,650	1,600	1,609	1,587	1,643	1,749	1,714	1,386	1,346	
Inverclyde	439	513	525	535	579	620	698	673	711	645	743	726	716	653	694	682	604	631	598	560	565	529	528	594	548	544	585	607	515	466	
Midlothian	466	472	548	626	608	647	709	645	691	681	690	780	670	658	669	666	639	635	560	555	563	576	528	581	570	616	606	693	549	484	
Moray	448	499	611	660	618	652	640	719	686	696	652	709	667	668	622	594	600	624	600	593	606	581	525	609	615	577	637	731	513	547	
North Ayrshire	768	822	910	1,012	1,005	1,023	1,064	1,146	1,127	1,138	1,161	1,197	1,073	1,025	1,050	1,068	1,060	1,016	998	925	955	972	918	913	954	1,011	1,081	1,165	841	846	
North Lanarkshire	2,124	2,255	2,596	2,560	2,680	2,753	2,763	2,748	2,769	2,852	2,675	2,767	2,665	2,589	2,540	2,486	2,503	2,361	2,305	2,220	2,208	2,161	2,021	2,009	2,065	2,097	2,232	2,223	1,801	1,769	
Orkney Islands	99	103	123	157	146	120	147	159	168	165	156	151	138	154	152	141	130	166	157	137	128	157	142	141	137	127	162	154	132	127	
Perth & Kinross	763	799	906	965	907	1,012	1,111	1,083	1,069	1,173	1,121	1,135	1,106	1,116	982	1,084	1,040	1,019	1,011	972	1,013	1,037	953	992	1,011	1,059	1,070	1,204	927	932	
Renfrewshire	1,047	1,091	1,229	1,268	1,374	1,375	1,436	1,486	1,530	1,503	1,507	1,441	1,528	1,569	1,341	1,362	1,386	1,232	1,212	1,173	1,204	1,128	1,070	1,230	1,118	1,207	1,174	1,313	1,017	1,024	
Scottish Borders	554	632	731	783	779	821	850	904	905	878	937	968	850	887	883	935	870	840	788	736	763	766	744	776	786	833	885	1,016	755	696	
Shetland Islands	137	148	165	158	155	163	175	155	171	154	201	162	180	167	155	153	159	145	145	173	142	165	134	160	153	143	131	143	119	143	
South Ayrshire	534	588	724	747	780	730	824	814	875	909	926	900	906	915	840	877	919	870	820	789	810	812	794	798	803	848	858	967	784	785	
South Lanarkshire	1,877	2,084	2,207	2,348	2,316	2,480	2,523	2,578	2,512	2,597	2,787	2,629	2,594	2,501	2,515	2,510	2,388	2,459	2,325	2,289	2,222	2,081	2,065	1,938	1,995	2,084	2,198	2,330	1,809	1,737	
Stirling	412	549	596	647	720	713	708	695	728	740	737	761	680	718	649	595	635	586	570	566	632	587	558	591	578	581	639	723	507	510	
West Dunbartonshire	528	576	618	676	712	733	745	771	798	762	813	798	720	770	700	726	728	679	697	684	659	609	608	570	590	691	667	524	500	500	
West Lothian	1,181	1,270	1,348	1,464	1,461	1,466	1,575	1,610	1,450	1,567	1,457	1,422	1,419	1,329	1,307	1,353	1,322	1,145	1,145	1,079	1,092	1,073	1,059	1,075	1,023	1,090	1,128	1,186	975	935	
NHS Board areas																															
Argyll & Clyde	2,291	2,509	2,759	2,893	3,161	3,163	3,375	3,442	3,559	3,505	3,607	3,501	3,511	3,479	3,312	3,336	3,240	3,068	2,990	2,877	2,920	2,752	2,725	3,051	2,817	2,925	3,071	3,389	2,624	2,487	
Ayrshire & Arran	1,963	2,150	2,500	2,657	2,675	2,735	2,907	2,993	2,965	3,111	3,065	3,095	2,929	2,902	2,838	2,835	2,863	2,791	2,620	2,508	2,559	2,590	2,481	2,486	2,590	2,718	2,856	3,151	2,363	2,387	
Borders	554	632	731	783	779	821	850	904	905	878	937	968	850	887	883	935	870	840	788	736	763	766	744	776	786	833	885	1,016	755	696	
Dumfries & Galloway	709	810	859	952	956	1,069	1,088	1,089	1,136	1,203	1,207	1,218	1,248	1,187	1,152	1,139	1,109	1,092	1,105	1,051	1,019	1,049	1,055	1,061	1,150	1,153	1,167	1,311	1,033	1,065	
Fife	2,014	2,215	2,479	2,671	2,632	2,816	2,900	2,840	2,877	2,897	2,875	2,906	2,831	2,749	2,645	2,681	2,673	2,490	2,528	2,429	2,396	2,287	2,268	2,372	2,411	2,588	2,708	2,896	2,263	2,181	
Forth Valley	1,700	2,009	2,088	2,189	2,246	2,365	2,431	2,435	2,394	2,414	2,389	2,406	2,307	2,303	2,125	2,063	2,041	1,987	1,953	1,894	1,936	1,874	1,825	2,024	1,943	1,969	2,075	2,268	1,667	1,655	
Grampian	3,291	3,424	3,727	4,067	3,933	4,123	3,993	4,156	4,197	4,380	4,295	4,265	4,104	4,087	4,098	4,038	3,929	3,888	3,813	3,762	3,750	3,505	3,437	3,520	3,540	3,634	3,711	4,120	3,099	2,860	
Greater Glasgow	5,882	6,294	6,533	6,776	6,570																										

Table 2 (continued)

PERSONS (continued)

Area	Age																														
	61	62	63	64	65	66	67	68	69	70	71	72	73	74	75	76	77	78	79	80	81	82	83	84	85	86	87	88	89	90+	
SCOTLAND	58,024	56,442	52,465	49,418	50,998	50,299	49,384	47,778	46,884	45,434	43,167	41,499	41,548	39,706	37,881	35,767	32,406	31,086	30,248	27,431	25,798	22,689	21,924	20,519	19,481	12,250	9,742	8,854	8,278	32,043	
Council areas																															
Aberdeen City	1,933	1,978	1,899	1,746	1,877	1,776	1,791	1,733	1,736	1,697	1,724	1,652	1,696	1,559	1,524	1,431	1,289	1,292	1,202	1,109	1,029	910	879	888	854	431	385	329	348	1,257	
Aberdeenshire	2,784	2,667	2,497	2,166	2,401	2,257	2,174	2,055	2,036	1,910	1,844	1,745	1,696	1,618	1,571	1,498	1,367	1,277	1,194	1,205	1,142	924	959	817	874	506	430	383	377	1,546	
Angus	1,428	1,390	1,279	1,200	1,266	1,167	1,172	1,186	1,160	1,115	1,045	952	1,010	1,030	916	860	845	747	776	665	641	596	546	468	490	305	228	236	224	872	
Argyll & Bute	1,302	1,210	1,219	1,120	1,222	1,120	1,034	1,053	1,009	968	912	901	898	820	785	761	697	625	621	585	529	473	437	453	410	280	171	190	207	789	
Clackmannanshire	624	565	528	486	465	473	470	508	429	411	365	359	369	319	373	306	277	258	250	211	234	203	209	186	159	116	85	69	57	220	
Dumfries & Galloway	2,124	2,122	1,966	1,890	1,872	1,821	1,756	1,803	1,711	1,591	1,583	1,579	1,472	1,428	1,410	1,324	1,190	1,234	1,079	1,023	888	850	764	703	640	422	375	339	305	1,134	
Dundee City	1,459	1,462	1,393	1,373	1,452	1,432	1,506	1,349	1,397	1,311	1,301	1,263	1,312	1,254	1,179	1,138	1,016	940	949	977	878	750	761	677	655	360	260	271	246	1,026	
East Ayrshire	1,449	1,391	1,324	1,257	1,268	1,261	1,210	1,198	1,129	1,120	1,066	1,062	998	979	854	802	765	695	731	620	553	523	506	481	431	293	227	177	180	680	
East Dunbartonshire	1,284	1,232	1,130	1,105	1,117	1,155	1,116	1,120	1,016	1,051	1,001	938	928	868	838	804	714	684	634	605	542	508	485	419	386	237	227	158	165	586	
East Lothian	1,130	1,035	1,005	960	930	898	1,006	863	867	857	847	769	811	750	718	729	638	617	648	556	486	492	429	438	422	232	190	182	155	679	
East Renfrewshire	1,006	983	882	898	851	855	916	835	856	797	797	740	765	719	673	636	584	570	592	467	482	387	435	380	356	217	220	151	155	553	
Edinburgh, City of	4,110	4,029	3,646	3,529	3,684	3,636	3,693	3,549	3,602	3,432	3,363	3,380	3,285	3,314	3,100	2,952	2,806	2,744	2,593	2,369	2,307	2,080	2,115	1,954	1,846	1,169	869	814	781	3,210	
Eilean Siar	340	340	302	340	325	310	307	296	272	287	277	272	252	217	227	237	193	183	195	182	180	166	180	138	143	84	64	59	46	258	
Falkirk	1,687	1,688	1,518	1,506	1,451	1,600	1,474	1,380	1,318	1,311	1,216	1,155	1,140	1,109	1,056	987	869	871	809	782	741	629	592	562	551	312	265	232	203	779	
Fife	4,370	4,105	3,867	3,478	3,587	3,574	3,383	3,434	3,349	3,187	3,032	2,894	2,797	2,695	2,709	2,413	2,271	2,312	2,232	1,962	1,906	1,638	1,599	1,499	1,432	952	726	637	553	2,455	
Glasgow City	5,041	5,087	4,706	4,682	4,806	4,809	4,844	4,768	4,644	4,878	4,431	4,329	4,588	4,226	3,981	3,848	3,429	3,239	3,231	2,823	2,646	2,336	2,282	2,126	2,027	1,276	1,019	955	882	3,326	
Highland	2,863	2,802	2,621	2,328	2,450	2,276	2,320	2,124	2,118	1,982	1,946	1,836	1,844	1,781	1,670	1,647	1,441	1,399	1,353	1,224	1,195	1,000	957	914	775	550	447	365	402	1,464	
Inverclyde	1,001	954	839	841	829	853	851	779	815	743	707	694	730	715	645	620	521	500	517	444	420	392	343	364	324	212	173	179	117	549	
Midlothian	967	870	803	784	791	808	789	734	748	706	669	588	652	617	578	572	459	460	413	388	383	315	302	301	318	149	134	110	119	441	
Moray	1,057	1,023	1,002	918	948	889	911	864	858	897	854	782	725	719	659	651	620	557	542	516	449	414	377	349	345	240	180	168	139	491	
North Ayrshire	1,754	1,663	1,580	1,462	1,591	1,449	1,499	1,341	1,330	1,303	1,241	1,216	1,165	1,131	1,041	979	890	775	845	705	644	608	584	592	523	330	265	249	228	879	
North Lanarkshire	3,601	3,553	3,140	3,027	3,197	3,139	3,057	2,848	2,837	2,719	2,543	2,467	2,330	2,208	2,205	1,989	1,748	1,649	1,609	1,407	1,390	1,127	1,103	1,016	869	647	494	430	359	1,397	
Orkney Islands	297	278	278	202	286	230	221	200	182	196	174	151	151	157	167	154	143	102	117	113	107	81	101	88	68	65	51	35	47	150	
Perth & Kinross	1,774	1,753	1,720	1,478	1,566	1,637	1,441	1,477	1,445	1,473	1,313	1,258	1,295	1,268	1,190	1,154	1,034	1,075	999	874	896	773	754	671	646	393	350	282	316	1,186	
Renfrewshire	2,066	1,868	1,780	1,734	1,653	1,752	1,672	1,664	1,617	1,564	1,442	1,284	1,388	1,386	1,283	1,172	1,041	969	962	893	744	724	652	545	623	369	275	269	288	914	
Scottish Borders	1,492	1,508	1,258	1,212	1,272	1,356	1,231	1,207	1,165	1,116	1,079	1,012	1,031	1,006	946	881	856	805	771	731	627	606	558	559	525	332	256	238	196	817	
Shetland Islands	264	281	264	214	236	188	195	197	179	168	176	142	147	136	140	146	126	117	100	126	102	100	99	96	97	37	48	38	45	145	
South Ayrshire	1,450	1,476	1,392	1,227	1,325	1,226	1,291	1,288	1,264	1,211	1,135	1,125	1,099	1,049	993	901	822	800	884	768	718	630	631	569	558	304	263	331	278	902	
South Lanarkshire	3,492	3,445	3,180	3,035	3,081	3,036	3,006	2,911	2,879	2,629	2,531	2,505	2,461	2,361	2,243	2,162	1,894	1,825	1,765	1,516	1,507	1,245	1,141	1,101	1,094	693	535	463	401	1,645	
Stirling	1,034	976	945	875	894	906	828	864	818	760	721	701	707	642	635	558	549	494	459	506	431	361	372	368	340	208	148	173	143	562	
West Dunbartonshire	1,061	976	922	840	827	894	840	827	813	806	747	784	757	694	691	656	563	561	529	478	437	386	371	370	325	261	193	167	139	526	
West Lothian	1,780	1,732	1,580	1,505	1,478	1,516	1,380	1,323	1,285	1,238	1,085	964	1,049	931	881	799	749	710	647	601	564	462	401	427	375	268	189	175	177	605	
NHS Board areas																															
Argyll & Clyde	5,185	4,749	4,551	4,396	4,356	4,427	4,283	4,163	4,090	3,901	3,641	3,449	3,584	3,460	3,228	3,011	2,649	2,483	2,473	2,237	1,963	1,834	1,710	1,599	1,559	1,032	760	744	705	2,636	
Ayrshire & Arran	4,653	4,530	4,296	3,946	4,184	3,936	4,000	3,827	3,723	3,634	3,442	3,403	3,262	3,159	2,888	2,682	2,477	2,270	2,460	2,093	1,915	1,761	1,721	1,642	1,512	927	755	757	686	2,461	
Borders	1,492	1,508	1,258	1,212	1,272	1,356	1,231	1,207	1,165	1,116	1,079	1,012	1,031	1,006	946	881	856	805	771	731	628	606	558	560	525	332	256	238	196	817	
Dumfries & Galloway	2,124	2,122	1,966	1,890	1,872	1,821	1,756	1,803	1,711	1,591	1,583	1,579	1,472	1,428	1,410	1,324	1,190	1,234	1,079	1,023	888	850	764	703	640	422	375	339	305	1,134	
Fife	4,368	4,103	3,866	3,478	3,586	3,573	3,382	3,434	3,349	3,186	3,031	2,893	2,797	2,694	2,709	2,412	2,271	2,312	2,232	1,962	1,905	1,638	1,599	1,499	1,432	952	726	637	552	2,455	
Forth Valley	3,338	3,227	2,992	2,864	2,807	2,968	2,766	2,747	2,559	2,480	2,297	2,217	2,211	2,065	2,059	1,844	1,691	1,624	1,514	1,498	1,405	1,190	1,172	1,114	1,049	629	494	474	401	1,558	
Grampian	5,774	5,668	5,398	4,830	5,226	4,922	4,876	4,652	4,630	4,504	4,422	4,179	4,117	3,896	3,754	3,580	3,276	3,126	2,938	2,830	2,620	2,248	2,215	2,054	2,073	1,177	995	880	864	3,294	
Greater Glasgow	8,399	8,346	7,588	7,499	7,670	7,706	7,652	7,550	7,3																						

Table 2 (continued)

MALES (continued)

Area	Age																													
	61	62	63	64	65	66	67	68	69	70	71	72	73	74	75	76	77	78	79	80	81	82	83	84	85	86	87	88	89	90+
SCOTLAND	28,263	26,985	24,979	23,269	24,025	23,657	23,187	22,098	21,536	20,659	19,351	18,437	18,104	17,128	15,955	14,970	13,361	12,578	11,925	10,579	9,693	8,071	7,688	6,961	6,454	3,806	2,856	2,557	2,180	7,477
Council areas																														
Aberdeen City	934	974	917	832	872	821	875	798	765	781	800	725	732	669	638	587	492	549	470	423	360	291	294	297	322	137	122	109	92	293
Aberdeenshire	1,441	1,328	1,233	1,063	1,209	1,129	1,089	1,003	999	946	861	830	768	740	712	678	582	567	475	539	451	338	369	297	296	168	126	110	112	390
Angus	700	671	618	593	592	561	542	565	574	511	478	451	438	471	426	350	382	299	309	267	233	222	209	153	189	115	74	76	57	216
Argyll & Bute	680	603	606	564	573	544	500	505	474	451	420	409	399	384	322	350	310	257	247	241	198	189	144	151	152	81	47	62	56	189
Clackmannanshire	319	262	248	232	229	206	244	232	190	194	184	181	137	157	128	135	117	98	76	83	71	73	54	50	40	23	31	16	43	
Dumfries & Galloway	1,046	986	951	902	920	852	879	875	817	735	736	769	686	669	631	555	511	521	482	437	338	336	276	256	242	140	120	100	81	280
Dundee City	758	740	680	616	710	674	700	612	631	588	557	545	530	527	480	493	418	381	339	374	341	254	275	245	208	101	68	83	67	251
East Ayrshire	720	662	597	597	566	645	583	535	521	514	484	464	424	428	360	340	334	295	280	249	222	193	174	165	144	101	58	56	44	166
East Dunbartonshire	604	577	528	491	530	516	514	483	483	462	426	435	385	376	362	292	263	246	219	210	207	168	144	144	78	67	55	53	155	
East Lothian	538	502	493	458	420	413	496	415	389	378	394	338	396	342	299	311	283	254	272	237	176	187	149	141	139	87	49	53	36	173
East Renfrewshire	450	439	413	420	388	402	419	393	376	345	347	327	319	316	277	241	227	207	255	190	182	133	153	122	114	60	62	51	34	125
Edinburgh, City of	1,988	1,906	1,703	1,668	1,730	1,672	1,646	1,626	1,658	1,524	1,515	1,468	1,358	1,408	1,281	1,205	1,139	1,049	969	896	853	737	747	662	597	392	271	220	211	752
Eilean Siar	183	161	157	158	146	159	150	142	125	152	132	109	124	96	98	105	72	74	81	67	68	63	53	41	47	19	13	11	11	45
Falkirk	793	848	693	708	680	737	697	638	617	609	567	505	512	482	432	423	363	357	327	266	299	237	231	177	185	90	71	63	64	204
Fife	2,072	1,974	1,889	1,679	1,679	1,705	1,615	1,594	1,513	1,463	1,392	1,341	1,269	1,150	1,118	1,028	947	1,005	869	720	734	534	558	532	475	277	236	181	140	538
Glasgow City	2,436	2,392	2,241	2,129	2,207	2,129	2,174	2,118	1,990	1,988	1,757	1,776	1,821	1,695	1,563	1,488	1,272	1,182	1,214	997	955	765	724	640	562	330	264	226	198	705
Highland	1,441	1,356	1,318	1,069	1,181	1,103	1,107	996	991	926	936	835	820	816	758	706	595	580	567	507	460	361	352	311	264	167	140	120	97	325
Inverclyde	487	442	407	399	366	394	405	329	361	342	316	290	311	270	255	237	220	189	192	176	167	129	93	114	91	56	42	28	113	
Midlothian	462	417	378	382	361	388	373	358	342	315	288	266	285	286	254	247	192	228	173	139	144	118	104	111	132	43	22	22	31	105
Moray	522	485	487	438	463	438	436	415	418	403	400	363	302	310	295	309	266	230	230	206	172	153	136	143	124	76	50	61	29	130
North Ayrshire	849	784	709	677	754	732	704	622	641	598	546	535	510	479	441	379	343	311	334	285	244	234	191	190	149	99	80	83	66	193
North Lanarkshire	1,713	1,655	1,493	1,438	1,495	1,451	1,374	1,250	1,248	1,240	1,122	1,087	1,060	912	933	815	723	661	632	510	496	397	403	309	281	218	148	100	90	310
Orkney Islands	149	132	130	97	140	126	106	89	86	105	84	73	62	67	74	79	66	42	47	53	31	40	30	17	15	14	8	9	43	
Perth & Kinross	888	830	810	689	760	776	691	690	672	700	623	607	594	577	517	488	458	428	429	332	341	295	290	254	202	143	105	102	89	322
Renfrewshire	995	902	844	827	773	780	759	722	731	706	626	542	612	593	538	516	446	384	380	347	273	258	247	174	226	111	97	85	78	203
Scottish Borders	735	736	605	556	618	645	588	559	598	513	483	443	470	472	431	408	401	345	311	311	238	245	205	206	184	119	90	73	68	197
Shetland Islands	145	143	126	103	122	101	93	97	97	69	94	58	66	74	67	66	42	45	38	55	43	34	25	35	37	14	12	2	15	34
South Ayrshire	684	703	644	581	637	589	603	618	583	562	508	509	500	446	406	385	338	319	364	281	282	248	250	195	177	96	82	88	81	204
South Lanarkshire	1,651	1,642	1,456	1,413	1,404	1,402	1,394	1,337	1,310	1,178	1,094	1,084	1,068	992	907	852	743	739	685	565	558	414	387	399	354	211	154	139	113	386
Stirling	498	485	432	418	427	439	391	412	372	366	325	332	304	277	266	216	219	203	162	184	175	122	133	121	70	40	58	45	134	
West Dunbartonshire	523	434	428	374	368	400	384	364	361	372	323	319	303	266	263	276	229	184	187	188	158	104	120	124	91	68	60	42	29	109
West Lothian	859	814	745	698	705	728	656	675	603	602	497	430	445	392	380	347	321	313	261	248	182	168	126	156	138	84	49	45	40	144
NHS Board areas																														
Argyll & Clyde	2,541	2,275	2,183	2,115	2,014	2,023	1,999	1,852	1,853	1,784	1,614	1,475	1,558	1,456	1,315	1,271	1,127	975	965	891	734	656	576	505	536	302	226	205	178	583
Ayrshire & Arran	2,253	2,149	1,950	1,855	1,957	1,966	1,890	1,775	1,745	1,674	1,538	1,508	1,434	1,353	1,207	1,104	1,015	925	978	815	748	675	615	550	470	296	220	227	191	563
Borders	735	736	605	556	618	645	588	559	598	513	483	443	470	472	431	408	401	345	311	311	238	245	205	207	184	119	90	73	68	197
Dumfries & Galloway	1,046	986	951	902	920	852	879	875	817	735	736	769	686	669	631	555	511	521	482	437	338	336	276	256	242	140	120	100	81	280
Fife	2,071	1,973	1,888	1,679	1,679	1,704	1,614	1,594	1,513	1,462	1,392	1,341	1,269	1,149	1,118	1,027	947	1,005	869	720	734	534	558	532	475	277	236	181	139	538
Forth Valley	1,606	1,593	1,372	1,355	1,334	1,380	1,329	1,276	1,176	1,168	1,073	1,019	993	896	854	763	715	677	584	527	561	430	426	364	357	198	132	153	125	375
Grampian	2,897	2,787	2,637	2,333	2,544	2,388	2,400	2,216	2,182	2,130	2,061	1,918	1,802	1,719	1,645	1,574	1,340	1,346	1,175	1,168	983	782	799	737	742	381	298	280	233	813
Greater Glasgow	4,027	3,912	3,592	3,401	3,516	3,425	3,439	3,401	3,239	3,205	2,869	2,838	2,881	2,666	2,490	2,398	2,045	1,841	1,898	1,582	1,525	1,253	1,166	1,054	925	537	452	403	312	1,097
Highland	1,441	1,356	1,318	1,069	1,181	1,103	1,107	996	991	926	936	835	820	816	758	706	595	580	567	507	460	361	352	311	264	167	140	120	97	325
Lanarkshire	2,976	2,900	2,642	2,540	2,578	2,573	2,490	2,282	2,243	2,119	1,987	1,947	1,892	1,691	1,630	1,472	1,290	1,251	1,178	960	939	690	697	619	554	375	264	195	189	623
Lothian	3,846	3,640	3,320	3,207	3,217	3,200	3,169	3,077	2,994	2,818	2,694	2,503	2,485	2,428	2,214	2,110	1,936	1,844	1,677	1,520	1,355	1,211	1,126	1,069	1,005	607	391	339	318	1,173

Table 3 Estimated population by sex, five year age group and administrative area: 30 June 2005

Area	Age group																			Area	
	All Ages	0 - 4	5 - 9	10 - 14	15 - 19	20 - 24	25 - 29	30 - 34	35 - 39	40 - 44	45 - 49	50 - 54	55 - 59	60 - 64	65 - 69	70 - 74	75 - 79	80 - 84	85 - 89		90+
SCOTLAND	5,094,800	265,200	284,772	315,119	327,273	331,547	298,717	330,636	389,171	404,514	370,353	331,149	340,332	272,923	245,343	211,354	167,388	118,361	58,605	32,043	SCOTLAND
Council areas																					Council areas
Aberdeen City	205,910	9,848	9,892	10,985	13,027	17,498	15,991	14,924	15,301	15,429	14,969	13,188	13,076	9,384	8,913	8,328	6,738	4,815	2,347	1,257	Aberdeen City
Aberdeenshire	233,430	12,607	14,387	16,092	14,831	10,749	10,028	14,287	18,654	19,686	18,592	17,356	17,505	12,850	10,923	8,813	6,907	5,047	2,570	1,546	Aberdeenshire
Angus	108,790	5,635	6,224	6,897	6,376	5,141	4,744	6,305	7,616	8,589	8,011	7,590	8,423	6,721	5,951	5,152	4,144	2,916	1,483	872	Angus
Argyll & Bute	90,870	4,076	5,089	5,745	5,457	4,162	3,723	4,911	6,467	6,983	6,703	6,325	7,165	6,114	5,438	4,499	3,489	2,477	1,258	789	Argyll & Bute
Clackmannanshire	48,630	2,584	2,894	3,309	3,256	2,663	2,535	2,981	3,915	3,945	3,497	3,281	3,586	2,803	2,345	1,823	1,464	1,043	486	220	Clackmannanshire
Dumfries & Galloway	148,340	6,913	8,000	9,327	8,647	6,360	6,177	7,736	10,245	11,748	10,756	10,314	11,665	10,156	8,963	7,653	6,237	4,228	2,081	1,134	Dumfries & Galloway
Dundee City	142,360	7,273	7,248	7,917	10,292	12,467	9,560	8,299	9,318	10,286	9,579	8,317	8,917	7,227	7,136	6,441	5,222	4,043	1,792	1,026	Dundee City
East Ayrshire	119,400	6,243	6,574	7,945	7,995	6,585	6,058	7,523	9,343	9,537	8,512	7,819	8,576	6,881	6,066	5,225	3,847	2,683	1,308	680	East Ayrshire
East Dunbartonshire	105,960	5,091	6,373	7,339	7,095	6,220	4,656	4,891	7,312	8,919	8,709	7,417	7,561	6,075	5,524	4,786	3,674	2,559	1,173	586	East Dunbartonshire
East Lothian	91,800	5,046	5,899	6,269	5,552	3,994	3,549	5,465	7,425	7,752	7,024	6,142	6,279	5,195	4,564	4,034	3,350	2,401	1,181	679	East Lothian
East Renfrewshire	89,600	4,927	5,843	6,407	6,123	4,905	3,608	4,344	6,485	7,656	7,412	6,094	6,041	4,766	4,313	3,818	3,055	2,151	1,099	553	East Renfrewshire
Edinburgh, City of	457,830	21,247	21,503	23,073	28,187	44,788	40,956	37,131	35,424	34,150	30,477	26,298	26,528	19,421	18,164	16,774	14,195	10,825	5,479	3,210	Edinburgh, City of
Eilean Siar	26,370	1,254	1,493	1,644	1,570	1,032	1,243	1,422	1,910	1,945	1,923	1,870	2,060	1,654	1,510	1,305	1,035	846	396	258	Eilean Siar
Falkirk	149,150	8,367	8,685	9,466	9,174	8,486	8,581	10,526	12,132	12,082	10,595	9,517	10,081	8,064	7,223	5,931	4,592	3,306	1,563	779	Falkirk
Fife	356,740	18,976	20,020	22,464	23,983	22,530	18,838	21,895	27,359	27,681	25,495	23,071	25,068	20,132	17,327	14,605	11,937	8,604	4,300	2,455	Fife
Glasgow City	578,790	30,567	29,303	31,901	39,082	52,634	48,738	45,573	44,982	44,632	39,218	32,296	29,617	24,498	23,871	22,452	17,728	12,213	6,159	3,326	Glasgow City
Highland	213,590	10,957	12,181	13,695	12,519	9,693	10,300	12,391	15,390	17,211	16,253	15,852	16,311	13,357	11,288	9,389	7,510	5,290	2,539	1,464	Highland
Inverclyde	82,130	4,199	4,637	5,147	5,510	5,087	4,320	4,761	6,020	6,794	6,181	5,427	5,476	4,535	4,127	3,589	2,803	1,963	1,005	549	Inverclyde
Midlothian	79,190	4,362	4,900	5,352	5,268	4,148	3,599	4,680	6,204	6,415	6,031	5,410	5,861	4,416	3,870	3,232	2,482	1,689	830	441	Midlothian
Moray	86,590	4,189	5,087	5,739	5,552	4,304	4,184	5,502	6,903	6,928	6,184	5,758	6,083	5,033	4,470	3,977	3,029	2,105	1,072	491	Moray
North Ayrshire	135,830	7,130	7,678	9,037	9,000	7,663	6,699	7,933	9,983	10,532	9,818	9,059	9,797	8,098	7,210	6,056	4,530	3,133	1,595	879	North Ayrshire
North Lanarkshire	323,420	19,005	19,839	20,886	21,225	21,080	19,171	22,115	26,378	26,080	23,312	20,517	20,348	16,680	15,078	12,267	9,200	6,043	2,799	1,397	North Lanarkshire
Orkney Islands	19,590	880	1,121	1,351	1,215	808	846	1,074	1,522	1,576	1,471	1,442	1,450	1,297	1,119	829	683	490	266	150	Orkney Islands
Perth & Kinross	138,590	6,937	7,757	8,823	8,150	6,799	6,063	7,716	9,905	11,014	10,013	9,654	10,488	8,505	7,566	6,607	5,452	3,968	1,987	1,186	Perth & Kinross
Renfrewshire	170,000	9,129	9,585	10,600	10,934	10,374	9,236	10,403	13,585	14,428	12,709	11,169	11,333	9,370	8,358	7,064	5,427	3,558	1,824	914	Renfrewshire
Scottish Borders	109,730	5,632	6,268	6,990	6,152	4,535	4,382	6,120	8,369	8,918	8,349	7,588	8,396	6,852	6,231	5,244	4,259	3,081	1,547	817	Scottish Borders
Shetland Islands	22,000	1,210	1,395	1,615	1,376	1,015	1,238	1,481	1,625	1,775	1,528	1,576	1,543	1,297	995	769	629	523	265	145	Shetland Islands
South Ayrshire	111,780	5,150	5,843	6,703	6,841	5,906	4,878	6,228	7,615	8,715	8,323	7,819	8,333	7,061	6,394	5,619	4,400	3,316	1,734	902	South Ayrshire
South Lanarkshire	306,280	16,294	17,845	19,713	19,444	18,792	16,621	19,577	23,672	24,860	23,525	20,670	20,124	16,513	14,913	12,487	9,889	6,510	3,186	1,645	South Lanarkshire
Stirling	86,930	4,641	5,241	5,672	6,375	5,832	3,968	4,909	6,557	6,930	6,126	5,701	6,061	4,769	4,310	3,531	2,695	2,038	1,012	562	Stirling
West Dunbartonshire	91,400	4,656	5,149	5,828	6,277	6,239	5,006	5,545	7,020	7,336	6,849	6,107	5,960	4,786	4,201	3,788	3,000	2,042	1,085	526	West Dunbartonshire
West Lothian	163,780	10,175	10,819	11,188	10,788	9,058	9,221	11,988	14,535	13,982	12,209	10,505	10,620	8,413	6,982	5,267	3,786	2,455	1,184	605	West Lothian
NHS Board areas																					NHS Board areas
Argyll & Clyde	414,022	20,973	23,420	26,114	26,865	24,195	20,884	24,181	31,642	34,131	31,200	27,839	28,839	23,762	21,319	18,035	13,844	9,343	4,800	2,636	Argyll & Clyde
Ayrshire & Arran	367,010	18,523	20,095	23,685	23,836	20,154	17,635	21,684	26,941	28,784	26,653	24,697	26,706	22,040	19,670	16,900	12,777	9,132	4,637	2,461	Ayrshire & Arran
Borders	109,730	5,632	6,268	6,990	6,152	4,532	4,382	6,120	8,369	8,918	8,349	7,588	8,397	6,852	6,231	5,244	4,259	3,083	1,547	817	Borders
Dumfries & Galloway	148,340	6,913	8,000	9,327	8,647	6,360	6,177	7,736	10,245	11,748	10,756	10,314	11,665	10,156	8,963	7,653	6,237	4,228	2,081	1,134	Dumfries & Galloway
Fife	356,664	18,974	20,014	22,458	23,978	22,526	18,837	21,893	27,350	27,673	25,492	23,066	25,058	20,127	17,324	14,601	11,936	8,603	4,299	2,455	Fife
Forth Valley	284,379	15,583	16,813	18,429	18,793	16,972	15,067	18,398	22,577	22,936	20,190	18,469	19,699	15,620	13,847	11,270	8,732	6,379	3,047	1,558	Forth Valley
Grampian	525,930	26,644	29,366	32,816	33,410	32,551	30,203	34,713	40,858	42,043	39,745	36,302	36,664	27,267	24,306	21,118	16,674	11,967	5,989	3,294	Grampian
Greater Glasgow	867,787	45,784	46,778	51,330	58,128	69,933	62,696	61,237	65,885	68,395	62,184	51,998	49,110	40,079	37,915	34,842	27,642	19,279	9,591	4,981	Greater Glasgow
Highland	213,590	10,957	12,181	13,695	12,519	9,693	10,300	12,391	15,390	17,211	16,253	15,852	16,311	13,357	11,288	9,389	7,510	5,290	2,539	1,464	Highland
Lanarkshire	557,088	31,211	33,494	36,149	36,156	35,332	31,478	36,729	44,446	45,219	41,279	36,226	35,708	29,522	26,625	21,891	16,795	10,908	5,215	2,705	Lanarkshire
Lothian	792,593	40,819	43,105	45,878	49,813	62,042	57,361	59,254	63,570	62,264	55,725	48,349	49,286	37,441	33,581	29,308	23,819	17,370	8,674	4,934	Lothian
Orkney	19,590	880	1,121	1,351	1,215	808	846	1,074	1,522	1,576	1,471	1,442	1,450	1,297	1,119	829	683	490	266	150	Orkney
Shetland	22,000	1,210	1,395	1,615	1,376	1,015	1,238	1,481	1,625	1,775	1,528	1,576	1,543	1,297	995	769	629	523	265	145	Shet

Table 3 (continued)

MALES

Area	Age group																			Area	
	All Ages	0 - 4	5 - 9	10 - 14	15 - 19	20 - 24	25 - 29	30 - 34	35 - 39	40 - 44	45 - 49	50 - 54	55 - 59	60 - 64	65 - 69	70 - 74	75 - 79	80 - 84	85 - 89		90+
SCOTLAND	2,456,109	135,541	146,258	160,962	167,926	167,139	149,480	159,418	187,175	195,029	180,366	162,923	167,535	131,064	114,503	93,679	68,789	42,992	17,853	7,477	SCOTLAND
Council areas																					Council areas
Aberdeen City	101,206	5,026	5,188	5,624	6,215	8,527	8,822	7,701	7,749	7,656	7,456	6,793	6,608	4,527	4,131	3,707	2,736	1,665	782	293	Aberdeen City
Aberdeenshire	115,460	6,463	7,532	8,182	7,690	5,880	5,003	6,629	9,119	9,720	9,379	8,691	8,942	6,446	5,429	4,145	3,014	1,994	812	390	Aberdeenshire
Angus	52,538	2,860	3,179	3,563	3,334	2,747	2,369	2,989	3,579	4,168	3,879	3,731	4,116	3,264	2,834	2,349	1,766	1,084	511	216	Angus
Argyll & Bute	44,827	2,096	2,567	2,909	2,899	2,524	2,065	2,468	3,208	3,466	3,339	3,115	3,404	3,112	2,596	2,063	1,486	923	398	189	Argyll & Bute
Clackmannanshire	23,498	1,338	1,457	1,638	1,675	1,378	1,207	1,408	1,893	1,929	1,689	1,584	1,780	1,349	1,101	877	635	357	160	43	Clackmannanshire
Dumfries & Galloway	71,728	3,559	4,099	4,702	4,574	3,317	2,966	3,712	4,907	5,685	5,159	5,079	5,851	4,874	4,343	3,595	2,700	1,643	683	280	Dumfries & Galloway
Dundee City	67,546	3,780	3,715	4,041	5,030	6,168	4,893	3,915	4,318	4,703	4,585	4,081	4,305	3,560	3,327	2,747	2,111	1,489	527	251	Dundee City
East Ayrshire	57,550	3,138	3,413	4,023	4,162	3,299	2,992	3,683	4,456	4,585	4,083	3,881	4,210	3,280	2,850	2,314	1,609	1,003	403	166	East Ayrshire
East Dunbartonshire	51,114	2,648	3,319	3,803	3,760	3,330	2,465	2,205	3,385	4,172	4,173	3,583	3,661	2,823	2,557	2,191	1,539	948	397	155	East Dunbartonshire
East Lothian	44,044	2,544	2,982	3,188	2,948	2,059	1,685	2,551	3,501	3,738	3,445	3,000	3,059	2,517	2,133	1,848	1,419	890	364	173	East Lothian
East Renfrewshire	42,697	2,522	3,057	3,262	3,199	2,583	1,797	1,952	2,943	3,589	3,650	2,931	2,954	2,193	1,978	1,654	1,207	780	321	125	East Renfrewshire
Edinburgh, City of	220,094	11,064	11,091	11,976	14,011	21,061	20,530	18,403	17,588	16,635	14,941	13,054	12,869	9,285	8,332	7,273	5,643	3,895	1,691	752	Edinburgh, City of
Eilean Siar	12,970	602	763	845	856	553	618	741	933	970	994	969	1,095	828	722	613	430	292	101	45	Eilean Siar
Falkirk	72,132	4,299	4,527	4,809	4,795	4,225	4,175	5,052	5,835	5,909	5,248	4,578	4,978	3,869	3,369	2,675	1,902	1,210	473	204	Falkirk
Fife	171,798	9,636	10,300	11,429	12,171	11,419	9,250	10,541	13,286	13,420	12,476	11,317	12,195	9,745	8,106	6,615	4,967	3,078	1,309	538	Fife
Glasgow City	276,883	15,654	15,013	16,206	19,913	25,658	24,561	22,729	21,765	21,275	18,887	16,157	14,703	11,622	10,618	9,037	6,719	4,081	1,580	705	Glasgow City
Highland	104,423	5,614	6,354	6,943	6,711	5,250	5,247	5,973	7,309	8,326	8,008	7,854	8,232	6,581	5,378	4,333	3,206	1,991	788	325	Highland
Inverclyde	39,139	2,166	2,413	2,627	2,842	2,576	2,172	2,296	2,739	3,311	2,972	2,651	2,677	2,169	1,855	1,529	1,093	679	259	113	Inverclyde
Midlothian	37,562	2,228	2,406	2,733	2,684	2,104	1,646	2,151	2,904	2,936	2,862	2,607	2,827	2,147	1,822	1,440	1,094	616	250	105	Midlothian
Moray	43,516	2,128	2,282	2,964	3,008	2,510	2,348	2,828	3,588	3,536	3,144	2,844	3,010	2,418	2,170	1,778	1,330	810	340	130	Moray
North Ayrshire	64,293	3,607	3,889	4,663	4,656	3,836	3,124	3,660	4,618	4,938	4,626	4,376	4,745	3,812	3,453	2,668	1,808	1,144	477	193	North Ayrshire
North Lanarkshire	155,270	9,702	10,126	10,769	10,791	10,710	9,318	10,558	12,665	12,532	11,117	9,898	9,930	7,889	6,818	5,421	3,764	2,115	837	310	North Lanarkshire
Orkney Islands	9,641	428	617	648	636	438	421	483	782	812	725	737	738	623	547	391	308	201	63	43	Orkney Islands
Perth & Kinross	67,150	3,536	3,952	4,524	4,285	3,667	3,139	3,630	4,723	5,363	4,877	4,687	5,217	4,065	3,589	3,101	2,320	1,512	641	322	Perth & Kinross
Renfrewshire	81,183	4,598	4,916	5,399	5,616	5,302	4,555	4,816	6,384	6,880	6,176	5,364	5,504	4,466	3,765	3,079	2,264	1,299	597	203	Renfrewshire
Scottish Borders	53,074	2,905	3,169	3,538	3,188	2,250	2,163	2,857	4,110	4,398	4,033	3,803	4,121	3,318	3,008	2,381	1,896	1,205	534	197	Scottish Borders
Shetland Islands	11,061	641	696	842	718	564	636	737	806	911	771	802	854	648	510	361	258	192	80	34	Shetland Islands
South Ayrshire	53,278	2,638	2,971	3,371	3,504	3,017	2,381	3,065	3,592	4,159	3,997	3,816	4,073	3,343	3,030	2,525	1,812	1,256	524	204	South Ayrshire
South Lanarkshire	146,261	8,201	9,103	10,059	10,130	9,577	8,202	9,208	11,263	11,752	11,328	10,075	9,708	7,786	6,847	5,416	3,926	2,323	971	386	South Lanarkshire
Stirling	41,521	2,391	2,694	2,868	3,201	2,958	1,790	2,257	2,993	3,294	3,091	2,767	3,033	2,262	2,041	1,604	1,066	743	334	134	Stirling
West Dunbartonshire	43,294	2,377	2,664	3,032	3,208	3,117	2,398	2,618	3,261	3,473	3,319	2,971	2,918	2,246	1,877	1,583	1,139	694	290	109	West Dunbartonshire
West Lothian	79,358	5,152	5,454	5,782	5,516	4,535	4,542	5,602	6,973	6,788	5,937	5,127	5,218	3,997	3,367	2,366	1,622	880	356	144	West Lothian
NHS Board areas																					NHS Board areas
Argyll & Clyde	199,084	10,650	11,990	13,288	13,928	12,704	10,544	11,548	14,942	16,528	15,254	13,514	14,013	11,508	9,741	7,887	5,653	3,362	1,447	583	Argyll & Clyde
Ayrshire & Arran	175,121	9,383	10,273	12,057	12,322	10,152	8,497	10,408	12,666	13,682	12,706	12,073	13,028	10,435	9,333	7,507	5,229	3,403	1,404	563	Ayrshire & Arran
Borders	53,073	2,905	3,169	3,538	3,188	2,248	2,163	2,857	4,110	4,398	4,033	3,803	4,121	3,318	3,008	2,381	1,896	1,206	534	197	Borders
Dumfries & Galloway	71,728	3,559	4,099	4,702	4,574	3,317	2,966	3,712	4,907	5,685	5,159	5,079	5,851	4,874	4,343	3,595	2,700	1,643	683	280	Dumfries & Galloway
Fife	171,762	9,634	10,297	11,425	12,169	11,417	9,250	10,540	13,285	13,415	12,475	11,314	12,192	9,742	8,104	6,613	4,966	3,078	1,308	538	Fife
Forth Valley	136,985	8,022	8,679	9,307	9,667	8,550	7,162	8,706	10,706	11,117	10,021	8,916	9,777	7,470	6,495	5,149	3,593	2,308	965	375	Forth Valley
Grampian	260,182	13,617	15,352	16,770	16,913	16,917	16,173	17,158	20,456	20,912	19,979	18,328	18,560	13,391	11,730	9,630	7,080	4,469	1,934	813	Grampian
Greater Glasgow	414,276	23,434	24,116	26,197	29,816	34,643	31,517	29,779	31,430	32,262	29,916	25,707	24,109	18,893	17,020	14,459	10,672	6,580	2,629	1,097	Greater Glasgow
Highland	104,423	5,614	6,354	6,943	6,711	5,250	5,247	5,973	7,309	8,326	8,008	7,854	8,232	6,581	5,378	4,333	3,206	1,991	788	325	Highland
Lanarkshire	267,499	15,899	17,075	18,594	18,615	18,014	15,455	17,536	21,268	21,689	19,807	17,549	17,353	13,917	12,166	9,636	6,821	3,905	1,577	623	Lanarkshire
Lothian	381,065	20,976	21,929	23,678	25,164	29,790	28,430	28,705	30,957	30,084	27,176	23,778	23,972	17,946	15,657	12,928	9,781	6,281	2,660	1,173	Lothian
Orkney	9,641	428	617	648	636	438	421	483	782	812	725	737	738	623	547	391	308	201	63	43	Orkney
Shetland	11,061	641	696	842	718	564	636	737	806	911	771	802	854	648	510	361	258	192	80	34	Shetland
Tayside	187,239	10,177	10,849	12,128	12,649	12,582	10,401	10,535	12,618	14,238	13,342	12,500	13,640	10,890	9,749	8,196	6,196	4,081	1,680	788	Tayside
Western Isles	12,970	602	763	845	856	553	618	741	933	970	994	969	1,095	828	722	613	430				

Table 3 (continued)

FEMALES

Area	Age group																			Area	
	All Ages	0 - 4	5 - 9	10 - 14	15 - 19	20 - 24	25 - 29	30 - 34	35 - 39	40 - 44	45 - 49	50 - 54	55 - 59	60 - 64	65 - 69	70 - 74	75 - 79	80 - 84	85 - 89		90+
SCOTLAND	2,638,691	129,659	138,514	154,157	159,347	164,408	149,237	171,218	201,996	209,485	189,987	168,226	172,797	141,859	130,840	117,675	98,599	75,369	40,752	24,566	SCOTLAND
Council areas																					Council areas
Aberdeen City	104,704	4,822	4,704	5,361	6,812	8,971	7,169	7,223	7,552	7,773	7,513	6,395	6,468	4,857	4,782	4,621	4,002	3,150	1,565	964	Aberdeen City
Aberdeenshire	117,970	6,144	6,855	7,910	7,141	4,869	5,025	7,658	9,535	9,966	9,213	8,665	8,563	6,404	5,494	4,668	3,893	3,053	1,758	1,156	Aberdeenshire
Angus	56,252	2,775	3,045	3,334	3,042	2,394	2,375	3,316	4,037	4,421	4,132	3,859	4,307	3,457	3,117	2,803	2,378	1,832	972	656	Angus
Argyll & Bute	46,043	1,980	2,522	2,836	2,558	1,638	1,658	2,443	3,259	3,517	3,364	3,210	3,761	3,002	2,842	2,436	2,003	1,554	860	600	Argyll & Bute
Clackmannanshire	25,132	1,246	1,437	1,671	1,581	1,285	1,328	1,573	2,022	2,016	1,808	1,697	1,806	1,454	1,244	946	829	686	326	177	Clackmannanshire
Dumfries & Galloway	76,612	3,354	3,901	4,625	4,073	3,043	3,211	4,024	5,338	6,063	5,597	5,235	5,814	5,282	4,620	4,058	3,537	2,585	1,398	854	Dumfries & Galloway
Dundee City	74,814	3,493	3,533	3,876	5,262	6,299	4,667	4,384	5,000	5,583	4,994	4,236	4,612	3,667	3,809	3,694	3,111	2,554	1,265	775	Dundee City
East Ayrshire	61,850	3,105	3,161	3,922	3,833	3,286	3,066	3,840	4,887	4,952	4,429	3,938	4,366	3,601	3,216	2,911	2,238	1,680	905	514	East Ayrshire
East Dunbartonshire	54,846	2,443	3,054	3,536	3,335	2,890	2,191	2,686	3,927	4,747	4,536	3,834	3,900	3,252	2,967	2,595	2,135	1,611	776	431	East Dunbartonshire
East Lothian	47,756	2,502	2,917	3,081	2,604	1,935	1,864	2,914	3,924	4,014	3,579	3,142	3,220	2,678	2,431	2,186	1,931	1,511	817	506	East Lothian
East Renfrewshire	46,903	2,405	2,786	3,145	2,924	2,322	1,811	2,392	3,542	4,067	3,762	3,163	3,087	2,573	2,335	2,164	1,848	1,371	778	428	East Renfrewshire
Edinburgh, City of	237,736	10,183	10,412	11,097	14,176	23,727	20,426	18,728	17,836	17,515	15,536	13,244	13,659	10,136	9,832	9,501	8,552	6,930	3,788	2,458	Edinburgh, City of
Eilean Siar	13,400	652	730	799	714	479	625	681	977	975	929	901	965	826	788	692	605	554	295	213	Eilean Siar
Falkirk	77,018	4,068	4,158	4,657	4,379	4,261	4,406	5,474	6,297	6,173	5,347	4,939	5,103	4,195	3,854	3,256	2,690	2,096	1,090	575	Falkirk
Fife	184,942	9,340	9,720	11,035	11,812	11,111	9,588	11,354	14,073	14,261	13,019	11,754	12,873	10,387	9,221	7,990	6,970	5,526	2,991	1,917	Fife
Glasgow City	301,907	14,913	14,290	15,695	19,169	26,976	24,177	22,844	23,217	23,357	20,331	16,139	14,914	12,876	13,253	13,415	11,009	8,132	4,579	2,621	Glasgow City
Highland	109,167	5,343	5,827	6,752	5,808	4,443	5,053	6,418	8,081	8,885	8,245	7,998	8,079	6,776	5,910	5,056	4,304	3,299	1,751	1,139	Highland
Inverclyde	42,991	2,033	2,224	2,520	2,668	2,511	2,148	2,465	3,281	3,483	3,209	2,776	2,799	2,366	2,272	2,060	1,710	1,284	746	436	Inverclyde
Midlothian	41,628	2,134	2,494	2,619	2,584	2,044	1,953	2,529	3,300	3,479	3,169	2,803	3,034	2,269	2,048	1,792	1,388	1,073	580	336	Midlothian
Moray	43,074	2,061	2,455	2,775	2,544	1,794	1,836	2,674	3,315	3,392	3,040	2,814	3,073	2,615	2,300	2,199	1,699	1,295	732	361	Moray
North Ayrshire	71,537	3,523	3,789	4,374	4,344	3,827	3,575	4,273	5,365	5,594	5,192	4,683	5,052	4,286	3,757	3,388	2,722	1,989	1,118	686	North Ayrshire
North Lanarkshire	168,150	9,303	9,713	10,117	10,434	10,370	9,853	11,557	13,713	13,548	12,195	10,619	10,418	8,791	8,260	6,846	5,436	3,928	1,962	1,087	North Lanarkshire
Orkney Islands	9,949	452	504	703	579	370	425	591	740	764	746	705	712	674	572	438	375	289	203	107	Orkney Islands
Perth & Kinross	71,440	3,401	3,805	4,299	3,865	3,132	2,924	4,086	5,182	5,651	5,136	4,967	5,271	4,440	3,977	3,506	3,132	2,456	1,346	864	Perth & Kinross
Renfrewshire	88,817	4,531	4,669	5,201	5,318	5,072	4,681	5,587	7,201	7,548	6,533	5,805	5,829	4,904	4,593	3,985	3,163	2,259	1,227	711	Renfrewshire
Scottish Borders	56,656	2,727	3,099	3,452	2,964	2,285	2,219	3,263	4,259	4,520	4,316	3,785	4,275	3,534	3,223	2,863	2,363	1,876	1,013	620	Scottish Borders
Shetland Islands	10,939	569	699	773	658	451	602	744	819	864	757	774	689	649	485	408	371	331	185	111	Shetland Islands
South Ayrshire	58,502	2,512	2,872	3,332	3,337	2,889	2,497	3,163	4,023	4,556	4,326	4,003	4,260	3,718	3,364	3,094	2,588	2,060	1,210	698	South Ayrshire
South Lanarkshire	160,019	8,093	8,742	9,654	9,314	9,215	8,419	10,369	12,409	13,108	12,197	10,595	10,416	8,727	8,066	7,071	5,963	4,187	2,215	1,259	South Lanarkshire
Stirling	45,409	2,250	2,547	2,804	3,174	2,874	2,178	2,652	3,564	3,636	3,035	2,934	3,028	2,507	2,269	1,927	1,629	1,295	678	428	Stirling
West Dunbartonshire	48,106	2,279	2,485	2,796	3,069	3,122	2,608	2,927	3,759	3,863	3,530	3,136	3,042	2,540	2,324	2,205	1,861	1,348	795	417	West Dunbartonshire
West Lothian	84,422	5,023	5,365	5,406	5,272	4,523	4,679	6,386	7,562	7,194	6,272	5,378	5,402	4,416	3,615	2,901	2,164	1,575	828	461	West Lothian
NHS Board areas																					NHS Board areas
Argyll & Clyde	214,938	10,323	11,430	12,826	12,937	11,491	10,340	12,633	16,700	17,603	15,946	14,325	14,826	12,254	11,578	10,148	8,191	5,981	3,353	2,053	Argyll & Clyde
Ayrshire & Arran	191,889	9,140	9,822	11,628	11,514	10,002	9,138	11,276	14,275	15,102	13,947	12,624	13,678	11,605	10,337	9,393	7,548	5,729	3,233	1,898	Ayrshire & Arran
Borders	56,657	2,727	3,099	3,452	2,964	2,284	2,219	3,263	4,259	4,520	4,316	3,785	4,276	3,534	3,223	2,863	2,363	1,877	1,013	620	Borders
Dumfries & Galloway	76,612	3,354	3,901	4,625	4,073	3,043	3,211	4,024	5,338	6,063	5,597	5,235	5,814	5,282	4,620	4,058	3,537	2,585	1,398	854	Dumfries & Galloway
Fife	184,902	9,340	9,717	11,033	11,809	11,109	9,587	11,353	14,065	14,258	13,017	11,752	12,866	10,385	9,220	7,988	6,970	5,525	2,991	1,917	Fife
Forth Valley	147,394	7,561	8,134	9,122	9,126	8,422	7,905	9,692	11,871	11,819	10,169	9,553	9,922	8,150	7,352	6,121	5,139	4,071	2,082	1,183	Forth Valley
Grampian	265,748	13,027	14,014	16,046	16,497	15,634	14,030	17,555	20,402	21,131	19,766	17,974	18,104	13,876	12,576	11,488	9,594	7,498	4,055	2,481	Grampian
Greater Glasgow	453,511	22,350	22,662	25,133	28,312	35,290	31,179	31,458	34,455	36,133	32,268	26,291	25,001	21,186	20,895	20,383	16,970	12,699	6,962	3,884	Greater Glasgow
Highland	109,167	5,343	5,827	6,752	5,808	4,443	5,053	6,418	8,081	8,885	8,245	7,998	8,079	6,776	5,910	5,056	4,304	3,299	1,751	1,139	Highland
Lanarkshire	289,589	15,312	16,419	17,555	17,541	17,318	16,023	19,193	23,178	23,530	21,472	18,677	18,355	15,605	14,459	12,255	9,974	7,003	3,638	2,082	Lanarkshire
Lothian	411,528	19,843	21,176	22,200	24,649	32,252	28,931	30,549	32,613	32,180	28,549	24,571	25,314	19,495	17,924	16,380	14,038	11,089	6,014	3,761	Lothian
Orkney	9,949	452	504	703	579	370	425	591	740	764	746	705	712	674	572	438	375	289	203	107	Orkney
Shetland	10,939	569	699	773	658	451	602	744	819	864	757	774	689	649	485	408	371	331	185	111	Shetland
Tayside	202,468	9,666	10,380	11,510	12,166	11,820	9,969	11,788	14,223	15,658	14,263	13,061	14,196	11,562	10,901	10,004	8,620	6,839	3,579	2,263	Tayside
Western Isles	13,400	652	730	799	714	479</															

Table 4 Components of population change by administrative area: 2004-2005

	Estimated	Births	Deaths	Natural	Estimated ¹	Other ²	Estimated	Population change	
	population 30 June 2004				net civilian migration		changes	population 30 June 2005	Number
SCOTLAND	5,078,400	54,259	56,538	-2,279	19,296	-617	5,094,800	16,400	0.3
Council areas									
Aberdeen City	205,710	2,117	2,175	-58	241	17	205,910	200	0.1
Aberdeenshire	231,570	2,442	2,134	308	1,795	-243	233,430	1,860	0.8
Angus	108,350	1,081	1,338	-257	701	-4	108,790	440	0.4
Argyll & Bute	91,190	759	1,143	-384	264	-200	90,870	-320	-0.4
Clackmannanshire	48,240	519	516	3	502	-115	48,630	390	0.8
Dumfries & Galloway	147,930	1,418	1,868	-450	864	-4	148,340	410	0.3
Dundee City	142,170	1,615	1,759	-144	334	0	142,360	190	0.1
East Ayrshire	119,720	1,257	1,423	-166	-182	28	119,400	-320	-0.3
East Dunbartonshire	106,550	902	974	-72	-514	-4	105,960	-590	-0.6
East Lothian	91,580	983	1,036	-53	273	0	91,800	220	0.2
East Renfrewshire	89,610	930	856	74	-84	0	89,600	-10	0.0
Edinburgh, City of	453,670	4,564	4,477	87	4,103	-30	457,830	4,160	0.9
Eilean Siar	26,260	220	355	-135	245	0	26,370	110	0.4
Falkirk	147,460	1,742	1,579	163	1,511	16	149,150	1,690	1.1
Fife	354,600	3,799	3,923	-124	2,164	100	356,740	2,140	0.6
Glasgow City	577,670	6,783	7,289	-506	1,417	209	578,790	1,120	0.2
Highland	211,340	2,175	2,245	-70	2,323	-3	213,590	2,250	1.1
Inverclyde	82,430	917	1,048	-131	-177	8	82,130	-300	-0.4
Midlothian	79,610	852	839	13	-433	0	79,190	-420	-0.5
Moray	86,740	877	982	-105	155	-200	86,590	-150	-0.2
North Ayrshire	136,020	1,357	1,583	-226	36	0	135,830	-190	-0.1
North Lanarkshire	322,790	3,903	3,423	480	155	-5	323,420	630	0.2
Orkney Islands	19,500	194	207	-13	103	0	19,590	90	0.5
Perth & Kinross	137,430	1,340	1,598	-258	1,612	-194	138,590	1,160	0.8
Renfrewshire	170,610	1,898	2,024	-126	-484	0	170,000	-610	-0.4
Scottish Borders	109,270	1,056	1,308	-252	712	0	109,730	460	0.4
Shetland Islands	21,940	223	195	28	32	0	22,000	60	0.3
South Ayrshire	111,850	1,038	1,381	-343	273	0	111,780	-70	-0.1
South Lanarkshire	305,410	3,304	3,415	-111	981	0	306,280	870	0.3
Stirling	86,370	919	843	76	477	7	86,930	560	0.6
West Dunbartonshire	91,970	988	1,153	-165	-405	0	91,400	-570	-0.6
West Lothian	162,840	2,087	1,449	638	302	0	163,780	940	0.6
					0			0	
NHS Board areas									
Argyll & Clyde	415,658	4,362	5,018	-656	-788	-192	414,022	-1,636	-0.4
Ayrshire & Arran	367,590	3,652	4,387	-735	127	28	367,010	-580	-0.2
Borders	109,270	1,056	1,306	-250	710	0	109,730	460	0.4
Dumfries & Galloway	147,930	1,418	1,868	-450	864	-4	148,340	410	0.3
Fife	354,519	3,799	3,923	-124	2,169	100	356,664	2,145	0.6
Forth Valley	281,764	3,181	2,951	230	2,477	-92	284,379	2,615	0.9
Grampian	524,020	5,436	5,291	145	2,191	-426	525,930	1,910	0.4
Greater Glasgow	867,083	9,674	10,287	-613	1,112	205	867,787	704	0.1
Highland	211,340	2,175	2,245	-70	2,323	-3	213,590	2,250	1.1
Lanarkshire	556,114	6,353	6,023	330	649	-5	557,088	974	0.2
Lothian	787,504	8,482	7,802	680	4,439	-30	792,593	5,089	0.6
Orkney	19,500	194	207	-13	103	0	19,590	90	0.5
Shetland	21,940	223	195	28	32	0	22,000	60	0.3
Tayside	387,908	4,034	4,680	-646	2,643	-198	389,707	1,799	0.5
Western Isles	26,260	220	355	-135	245	0	26,370	110	0.4

¹ Includes movements to/from armed forces and an adjustment for a recurring unattributable population change based on the 2001 Census, which is assumed to be unmeasured migration. See the "Notes and Definitions" section for more information on unattributable population change.

² Includes changes in the number of prisoners and armed forces stationed in Scotland.

Table 5 Components of population change by administrative area: 2001-2005

	Estimated	Births	Deaths	Natural	Estimated ¹	Other ²	Estimated	Population change	
	population 30 June 2001				net civilian migration		population 30 June 2005	Number	%
SCOTLAND	5,064,200	210,866	229,751	-18,885	50,434	-949	5,094,800	30,600	0.6
Council areas									
Aberdeen City	211,910	8,230	8,710	-480	-5,547	27	205,910	-6,000	-2.8
Aberdeenshire	226,940	9,372	8,495	877	5,851	-238	233,430	6,490	2.9
Angus	108,370	4,259	5,377	-1,118	1,955	-417	108,790	420	0.4
Argyll & Bute	91,300	3,066	4,635	-1,569	1,949	-810	90,870	-430	-0.5
Clackmannanshire	48,070	1,982	2,045	-63	700	-77	48,630	560	1.2
Dumfries & Galloway	147,780	5,410	7,380	-1,970	2,527	3	148,340	560	0.4
Dundee City	145,460	6,100	7,289	-1,189	-1,911	0	142,360	-3,100	-2.1
East Ayrshire	120,310	4,860	5,835	-975	0	65	119,400	-910	-0.8
East Dunbartonshire	108,250	3,728	3,965	-237	-2,080	27	105,960	-2,290	-2.1
East Lothian	90,180	3,824	4,141	-317	1,937	0	91,800	1,620	1.8
East Renfrewshire	89,410	3,679	3,513	166	24	0	89,600	190	0.2
Edinburgh, City of	449,020	18,149	18,151	-2	8,901	-89	457,830	8,810	2.0
Eilean Siar	26,450	940	1,552	-612	532	0	26,370	-80	-0.3
Falkirk	145,270	6,442	6,537	-95	3,932	43	149,150	3,880	2.7
Fife	349,770	14,614	15,660	-1,046	7,316	700	356,740	6,970	2.0
Glasgow City	578,710	26,323	29,980	-3,657	3,643	94	578,790	80	0.0
Highland	208,920	8,398	9,456	-1,058	5,785	-57	213,590	4,670	2.2
Inverclyde	84,150	3,384	4,415	-1,031	-1,045	56	82,130	-2,020	-2.4
Midlothian	80,950	3,448	3,365	83	-1,743	-100	79,190	-1,760	-2.2
Moray	87,000	3,421	3,826	-405	145	-150	86,590	-410	-0.5
North Ayrshire	135,820	5,519	6,468	-949	959	0	135,830	10	0.0
North Lanarkshire	321,180	15,269	13,865	1,404	708	128	323,420	2,240	0.7
Orkney Islands	19,220	705	853	-148	518	0	19,590	370	1.9
Perth & Kinross	134,950	5,153	6,423	-1,270	5,034	-124	138,590	3,640	2.7
Renfrewshire	172,850	7,292	8,184	-892	-1,958	0	170,000	-2,850	-1.6
Scottish Borders	106,950	4,196	5,416	-1,220	4,000	0	109,730	2,780	2.6
Shetland Islands	21,960	922	848	74	-34	0	22,000	40	0.2
South Ayrshire	112,160	3,989	5,840	-1,851	1,521	-50	111,780	-380	-0.3
South Lanarkshire	302,340	12,714	13,427	-713	4,653	0	306,280	3,940	1.3
Stirling	86,200	3,485	3,569	-84	794	20	86,930	730	0.8
West Dunbartonshire	93,320	3,880	4,628	-748	-1,172	0	91,400	-1,920	-2.1
West Lothian	159,030	8,113	5,903	2,210	2,540	0	163,780	4,750	3.0
NHS Board areas									
Argyll & Clyde	420,700	16,721	20,542	-3,821	-2,103	-754	414,022	-6,678	-1.6
Ayrshire & Arran	368,290	14,368	18,143	-3,775	2,480	15	367,010	-1,280	-0.3
Borders	106,950	4,195	5,414	-1,219	3,999	0	109,730	2,780	2.6
Dumfries & Galloway	147,780	5,410	7,380	-1,970	2,527	3	148,340	560	0.4
Fife	349,690	14,614	15,660	-1,046	7,320	700	356,664	6,974	2.0
Forth Valley	279,240	11,907	12,178	-271	5,424	-14	284,379	5,139	1.8
Grampian	525,850	21,023	21,031	-8	449	-361	525,930	80	0.0
Greater Glasgow	868,170	37,894	42,119	-4,225	3,721	121	867,787	-383	0.0
Highland	208,920	8,398	9,456	-1,058	5,785	-57	213,590	4,670	2.2
Lanarkshire	553,230	24,733	23,958	775	2,955	128	557,088	3,858	0.7
Lothian	779,000	33,527	31,560	1,967	11,815	-189	792,593	13,593	1.7
Orkney	19,220	705	853	-148	518	0	19,590	370	1.9
Shetland	21,960	922	848	74	-34	0	22,000	40	0.2
Tayside	388,750	15,509	19,057	-3,548	5,046	-541	389,707	957	0.2
Western Isles	26,450	940	1,552	-612	532	0	26,370	-80	-0.3

¹ Includes movements to/from armed forces and an adjustment for a recurring unattributable population change based on the 2001 Census, which is assumed to be unmeasured migration. See the "Notes and Definitions" section for more information on unattributable population change.

² Includes changes in the number of prisoners and armed forces stationed in Scotland.

Table 6 Components of population change by administrative area: 1995-2005

	Estimated population 30 June 1995	Births	Deaths	Natural change	Estimated ¹ net civilian migration and other changes	Estimated population 30 June 2005	Population change	
							Number	%
SCOTLAND	5,103,690	551,318	586,293	-34,975	26,085	5,094,800	-8,890	-0.2
Council areas								
Aberdeen City	219,880	21,953	22,440	-487	-13,483	205,910	-13,970	-6.4
Aberdeenshire	226,070	24,466	20,845	3,621	3,739	233,430	7,360	3.3
Angus	111,560	11,189	13,699	-2,510	-260	108,790	-2,770	-2.5
Argyll & Bute	91,950	8,312	12,000	-3,688	2,608	90,870	-1,080	-1.2
Clackmannanshire	48,570	5,281	5,207	74	-14	48,630	60	0.1
Dumfries & Galloway	148,520	14,294	18,290	-3,996	3,816	148,340	-180	-0.1
Dundee City	152,460	15,766	18,648	-2,882	-7,218	142,360	-10,100	-6.6
East Ayrshire	122,790	12,862	14,847	-1,985	-1,405	119,400	-3,390	-2.8
East Dunbartonshire	109,850	10,368	9,974	394	-4,284	105,960	-3,890	-3.5
East Lothian	86,600	9,970	10,526	-556	5,756	91,800	5,200	6.0
East Renfrewshire	87,530	9,597	8,590	1,007	1,063	89,600	2,070	2.4
Edinburgh, City of	443,860	47,407	48,101	-694	14,664	457,830	13,970	3.1
Eilean Siar	28,810	2,508	3,956	-1,448	-992	26,370	-2,440	-8.5
Falkirk	142,680	16,109	16,308	-199	6,669	149,150	6,470	4.5
Fife	349,720	37,157	39,280	-2,123	9,143	356,740	7,020	2.0
Glasgow City	604,080	69,369	79,817	-10,448	-14,842	578,790	-25,290	-4.2
Highland	208,220	22,365	23,904	-1,539	6,909	213,590	5,370	2.6
Inverclyde	88,640	9,117	11,483	-2,366	-4,144	82,130	-6,510	-7.3
Midlothian	78,860	9,098	8,443	655	-325	79,190	330	0.4
Moray	87,870	9,457	9,430	27	-1,307	86,590	-1,280	-1.5
North Ayrshire	137,800	14,585	16,368	-1,783	-187	135,830	-1,970	-1.4
North Lanarkshire	323,450	39,004	35,210	3,794	-3,824	323,420	-30	0.0
Orkney Islands	19,810	1,873	2,207	-334	114	19,590	-220	-1.1
Perth & Kinross	133,220	13,408	16,233	-2,825	8,195	138,590	5,370	4.0
Renfrewshire	176,430	19,553	20,567	-1,014	-5,416	170,000	-6,430	-3.6
Scottish Borders	105,940	10,726	13,470	-2,744	6,534	109,730	3,790	3.6
Shetland Islands	22,970	2,505	2,209	296	-1,266	22,000	-970	-4.2
South Ayrshire	113,620	10,607	14,709	-4,102	2,262	111,780	-1,840	-1.6
South Lanarkshire	304,930	32,986	33,970	-984	2,334	306,280	1,350	0.4
Stirling	82,420	8,947	9,148	-201	4,711	86,930	4,510	5.5
West Dunbartonshire	95,870	10,479	11,820	-1,341	-3,129	91,400	-4,470	-4.7
West Lothian	148,710	20,000	14,594	5,406	9,664	163,780	15,070	10.1
NHS Board areas								
Argyll & Clyde	430,920	44,945	52,349	-7,404	-9,494	414,022	-16,898	-3.9
Ayrshire & Arran	374,210	38,054	45,924	-7,870	670	367,010	-7,200	-1.9
Borders	105,940	10,725	13,468	-2,743	6,533	109,730	3,790	3.6
Dumfries & Galloway	148,520	14,294	18,290	-3,996	3,816	148,340	-180	-0.1
Fife	349,720	37,157	39,280	-2,123	9,067	356,664	6,944	2.0
Forth Valley	273,670	30,335	30,690	-355	11,064	284,379	10,709	3.9
Grampian	533,820	55,876	52,715	3,161	-11,051	525,930	-7,890	-1.5
Greater Glasgow	894,480	99,850	110,661	-10,811	-15,882	867,787	-26,693	-3.0
Highland	208,220	22,365	23,904	-1,539	6,909	213,590	5,370	2.6
Lanarkshire	557,330	64,003	60,428	3,575	-3,817	557,088	-242	0.0
Lothian	758,030	86,468	81,664	4,804	29,759	792,593	34,563	4.6
Orkney	19,810	1,873	2,207	-334	114	19,590	-220	-1.1
Shetland	22,970	2,505	2,209	296	-1,266	22,000	-970	-4.2
Tayside	397,240	40,360	48,548	-8,188	655	389,707	-7,533	-1.9
Western Isles	28,810	2,508	3,956	-1,448	-992	26,370	-2,440	-8.5

¹ Includes movements to/from armed forces and an adjustment for a recurring unattributable population change based on the 2001 Census, which is assumed to be unmeasured migration. See the "Notes and Definitions" section for more information on unattributable population change. Also includes changes in the number of armed forces stationed in Scotland.

Table 7 Age structure of administrative areas: 30 June 2006

	Males				Females				Sex Ratio ³
	Average Age ¹	% under 16	% working age	% pension - able age ²	Average Age ¹	% under 16	% working age	% pension - able age ²	
SCOTLAND	38	19	67	14	41	17	59	24	0.93
Council areas									
Aberdeen City	38	17	70	13	41	15	62	23	0.97
Aberdeenshire	39	21	66	14	41	19	59	22	0.98
Angus	40	20	64	17	43	17	56	27	0.93
Argyll & Bute	41	18	65	17	44	17	54	29	0.97
Clackmannanshire	38	20	66	14	41	19	59	23	0.93
Dumfries & Galloway	42	19	63	18	44	17	54	29	0.94
Dundee City	38	18	66	15	41	16	59	25	0.90
East Ayrshire	39	20	66	15	42	18	58	24	0.93
East Dunbartonshire	39	21	64	15	42	18	57	25	0.93
East Lothian	39	21	63	16	42	19	56	25	0.92
East Renfrewshire	38	22	63	14	42	19	56	25	0.91
Edinburgh, City of	37	17	71	13	40	14	64	22	0.93
Eilean Siar	41	19	64	17	44	18	53	30	0.97
Falkirk	38	20	66	14	41	18	59	23	0.94
Fife	39	20	66	14	41	17	58	24	0.93
Glasgow City	36	18	70	12	40	16	62	22	0.92
Highland	40	19	65	15	43	18	57	26	0.96
Inverclyde	38	20	66	14	42	17	58	25	0.91
Midlothian	38	21	65	14	41	19	59	23	0.90
Moray	39	19	66	15	42	18	56	26	1.01
North Ayrshire	39	20	64	15	42	18	57	25	0.90
North Lanarkshire	37	21	66	12	40	19	60	22	0.92
Orkney Islands	40	19	65	16	43	18	55	27	0.97
Perth & Kinross	40	19	64	17	43	17	55	28	0.94
Renfrewshire	38	20	66	14	41	17	59	23	0.91
Scottish Borders	41	19	63	17	43	18	55	27	0.94
Shetland Islands	38	21	66	13	40	20	57	23	1.01
South Ayrshire	41	18	64	18	44	16	55	29	0.91
South Lanarkshire	38	20	66	14	41	18	59	23	0.91
Stirling	38	21	65	14	41	18	58	24	0.91
West Dunbartonshire	38	20	67	13	41	17	59	24	0.90
West Lothian	36	22	67	11	39	20	61	19	0.94
NHS Board areas									
Argyll & Clyde	39	19	66	14	42	17	58	25	0.93
Ayrshire & Arran	39	20	65	16	42	17	57	26	0.91
Borders	41	19	63	17	43	18	55	27	0.94
Dumfries & Galloway	42	19	63	18	44	17	54	29	0.94
Fife	39	20	66	14	41	17	58	24	0.93
Forth Valley	38	20	66	14	41	18	59	23	0.93
Grampian	39	19	67	14	41	17	59	23	0.98
Greater Glasgow	37	19	68	13	40	17	61	23	0.91
Highland	40	19	65	15	43	18	57	26	0.96
Lanarkshire	37	21	66	13	40	18	59	22	0.92
Lothian	37	19	69	13	40	16	62	22	0.93
Orkney	40	19	65	16	43	18	55	27	0.97
Shetland	38	21	66	13	40	20	57	23	1.01
Tayside	40	19	65	16	42	17	57	27	0.92
Western Isles	41	19	64	17	44	18	53	30	0.97

¹ The average is the arithmetic mean age of a population count for a particular area.

² Pensionable age is 65 for men and 60 for women.

³ The sex ratio is the male population divided by the female population.

Table 8 Rest of UK/Overseas moves by age group: 2004-2005

Numbers

Movements between Scotland and the rest of the UK ¹

	0-15	16-24	25-34	35-44	45-54	55-64	65-74	75-84	85+	All ages
IN	9,656	12,796	13,704	9,083	5,376	3,933	1,622	780	392	57,342
OUT	6,909	10,894	13,504	6,575	3,186	2,044	954	508	261	44,835
NET	2,747	1,902	200	2,508	2,190	1,889	668	272	131	12,507

Movements between Scotland and Overseas (including asylum seekers; excluding unmeasured migration adjustment) ²

	0-15	16-24	25-34	35-44	45-54	55-64	65-74	75-84	85+	All ages
IN	4,836	12,412	11,943	3,553	1,455	736	329	107	29	35,400
OUT	4,329	6,829	8,464	4,121	1,997	1,280	598	318	164	28,100
NET	507	5,583	3,479	-568	-542	-544	-269	-211	-135	7,300

Total net migration (including asylum seekers, rounding and unmeasured migration adjustments) ³

	0-15	16-24	25-34	35-44	45-54	55-64	65-74	75-84	85+	All ages
NET	3,245	6,973	3,607	2,144	1,710	1,304	338	4	-29	19,296

Percentages

Movements between Scotland and the rest of the UK ¹

	0-15	16-24	25-34	35-44	45-54	55-64	65-74	75-84	85+	All ages
IN	17	22	24	16	9	7	3	1	1	100
OUT	15	24	30	15	7	5	2	1	1	100

Movements between Scotland and Overseas (including asylum seekers; excluding unmeasured migration adjustment) ²

	0-15	16-24	25-34	35-44	45-54	55-64	65-74	75-84	85+	All ages
IN	14	35	34	10	4	2	1	0	0	100
OUT	15	24	30	15	7	5	2	1	1	100

¹ National Health Service Central Register (NHSCR) patient movements mid-2004 to mid-2005.

² Totals are based primarily on International Passenger Survey (IPS) data. However, the sample size in Scotland is too small to give an age breakdown so an age distribution is assumed using NHSCR data.

³ Note that the movements between Scotland and the rest of the UK and overseas will not sum to the total net migration as they exclude unmeasured migration and rounding adjustments.

Table 9 Land area and population density, by administrative area: 30 June 2005

	Estimated population 30 June 2005	Area ¹ (sq km)	Persons ² per sq km
SCOTLAND	5,094,800	77,925	65
Council areas			
Aberdeen City	205,910	186	1,108
Aberdeenshire	233,430	6,313	37
Angus	108,790	2,182	50
Argyll & Bute	90,870	6,909	13
Clackmannanshire	48,630	159	307
Dumfries & Galloway	148,340	6,426	23
Dundee City	142,360	60	2,379
East Ayrshire	119,400	1,262	95
East Dunbartonshire	105,960	175	607
East Lothian	91,800	679	135
East Renfrewshire	89,600	174	516
Edinburgh, City of	457,830	264	1,736
Eilean Siar	26,370	3,071	9
Falkirk	149,150	297	502
Fife	356,740	1,325	269
Glasgow City	578,790	175	3,298
Highland	213,590	25,659	8
Inverclyde	82,130	160	512
Midlothian	79,190	354	224
Moray	86,590	2,238	39
North Ayrshire	135,830	885	153
North Lanarkshire	323,420	470	688
Orkney Islands	19,590	990	20
Perth & Kinross	138,590	5,286	26
Renfrewshire	170,000	261	651
Scottish Borders	109,730	4,732	23
Shetland Islands	22,000	1,466	15
South Ayrshire	111,780	1,222	91
South Lanarkshire	306,280	1,772	173
Stirling	86,930	2,187	40
West Dunbartonshire	91,400	159	575
West Lothian	163,780	427	383
			#DIV/0!
NHS Board areas			
Argyll & Clyde	414,022	7,505	55
Ayrshire & Arran	367,010	3,377	109
Borders	109,730	4,732	23
Dumfries & Galloway	148,340	6,426	23
Fife	356,664	1,325	269
Forth Valley	284,379	2,633	108
Grampian	525,930	8,736	60
Greater Glasgow	867,787	555	1,563
Highland	213,590	25,659	8
Lanarkshire	557,088	2,181	255
Lothian	792,593	1,760	450
Orkney	19,590	990	20
Shetland	22,000	1,466	15
Tayside	389,707	7,508	52
Western Isles	26,370	3,071	9

¹ See note on page 20. Figures may not add exactly because of rounding.

² Persons per sq km has been calculated using actual, not rounded areas.

6. Notes and Definitions

Population Covered

The estimated population of an area includes all those usually resident there, whatever their nationality. Students are treated as being resident at their term-time address. Members of UK and non-UK armed forces stationed in Scotland are included; UK forces stationed outside Scotland are excluded. Short-term international migrants are excluded.

Age

Population figures relate to 30 June of the year shown and ages relate to age last birthday.

Presentation of Results

Although the populations are tabulated in units, this does not imply accuracy to that level. The data are presented in units for the convenience of users wishing to compile non-standard aggregations without encountering rounding problems.

Administrative Areas

The composition of the NHS Board areas in terms of Council areas is summarised in the table below. This publication does not take into account changes due to the abolition of Argyll & Clyde NHS Board area.

Composition of NHS Board areas

NHS Board area	Council area
Argyll & Clyde	Argyll & Bute, East Renfrewshire (part), Inverclyde, Renfrewshire, West Dunbartonshire (part), Stirling (part)
Ayrshire & Arran	East Ayrshire, North Ayrshire, South Ayrshire
Borders	Scottish Borders
Dumfries & Galloway	Dumfries & Galloway
Fife	Fife (part)
Forth Valley	Clackmannanshire, Falkirk (part), Stirling (part), Perth & Kinross (part)
Grampian	Aberdeen City, Aberdeenshire, Moray
Greater Glasgow	East Dunbartonshire, East Renfrewshire (part), Glasgow City, North Lanarkshire (part), South Lanarkshire (part), West Dunbartonshire (part)
Highland	Highland
Lanarkshire	North Lanarkshire (part), South Lanarkshire (part), west Lothian (part), Falkirk (part)
Lothian	East Lothian, City of Edinburgh, Midlothian, West Lothian (part), Falkirk (part)
Orkney	Orkney Islands
Shetland	Shetland Islands
Tayside	Angus, Dundee City, Perth & Kinross (part), Fife (part)
Western Isles	Eilean Siar

*Note: In practice there are some other very small “slivers” where NHS Board and Council area boundaries cross.

Land Area

The land areas used to calculate the population density information presented in Table 9 were derived from digital boundaries used for the 2001 Census.

Migration Data Sources

Migration is the most difficult component of population change to estimate. The other components (births and deaths) are estimated using data from the civil registration system,

which is considered to be virtually complete. In contrast, there is no comprehensive system which registers migration in the UK - either moves to or from the rest of the world, or moves within the UK. Estimates of migration therefore have to be based on survey data and the best proxy data that exist.

Migration is derived from three key sources of data. The National Health Service Central Register (NHSCR) for moves between health board areas within the UK, with migration at council area level within Scotland estimated using anonymised data from the Community Health Index (CHI). The International Passenger Survey (IPS) provides information on moves into and out of Scotland from outside the UK.

The NHSCR system records the movements of patients between NHS health board areas in the UK. Each time a patient transfers to a new NHS doctor in a different health board area, the NHSCR is notified and then the patient is considered to have made a migrant move. Counts of these re-registrations are used as a proxy indicator for moves within the UK.

The CHI holds records of people registered with an NHS doctor in Scotland. Unlike the NHSCR, the records provided to GROS contain the postcode of the patient's address, which enables migration to be estimated for councils, and for smaller areas. The approach used for estimating council-level migration involves matching CHI patient records which are extracted from a database which reflects the 'live' CHI system on two occasions one year apart.

This matching of two extracts, say A and B, will create three sets of patients:

- set of patients in extract A and extract B
- set of patients in extract A but not in extract B
- set of patients in extract B but not in extract A.

The set of patients in both extracts whose postcodes were not the same in each extract can be considered as those within-Scotland migrants who moved from one address in Scotland to another within Scotland between the dates of the two extracts. The remaining two sets of patients are either migrants to or from Scotland; babies born between the two extracts; deaths between the dates of the two extracts; movements to or from the Armed Forces; and a small number of records that are for the same patient but have different CHI numbers because they could not be matched when the GP registration was processed. Currently, GROS migration data derived from the NHSCR is considered to be the most reliable data available at health board level, so estimates from the CHI are controlled to ensure that they are consistent with the NHSCR data for moves across a health board boundary by origin, destination, age and sex.

The International Passenger Survey (IPS) is a continuous sample survey conducted by the Office for National Statistics at the principal air, sea and Channel Tunnel routes between the UK and countries outside the British Isles. The sample of migrants contacted within the survey is small, particularly for Scottish migrants (approx 100 survey contacts during 2004), and therefore estimates derived from the IPS are subject to larger sampling and non-sampling errors, and are considered less reliable than UK-level estimates.

Information about the country of origin and destination, and age of migrants is particularly subject to error. In addition to IPS data, additional information is received on migrants to and from the Republic of Ireland, asylum seekers and visitor switchers¹.

International Migration

The method for estimating international migration into and out of Scotland combines data on intentions to migrate to Scotland based on the IPS, along with estimates of data on migration from Ireland, visitor switchers¹ and asylum seekers. An estimate for unmeasured migration is also included and this is explained in more detail below.

The Office for National Statistics (ONS) produce an estimate of Total International Migration (TIM) which is similar to this approach, although it includes an adjustment for migrant switchers (people who intend to stay for one year but stay for a shorter period), and use a modified methodology for visitor switchers. More information on ONS's method can be found in their publication Total International Migration 2004 which is available on their website through the following link:

http://www.statistics.gov.uk/downloads/theme_population/MN31.pdf

In light of ongoing research into the geographical distribution of international migrants, and the methods for estimating visitor and migrant switchers (through the National Statistics Quality Review of International Migration) the method used in Scotland has not been changed. However, it is planned to carry out a full review once the relevant research is completed.

More details on the Quality Review and the most recent progress report published in February 2006 can be found on the ONS website through the following link:

<http://www.statistics.gov.uk/about/data/methodology/quality/reviews/population.asp>

In addition to the results of the quality review, it is planned to analyse recent trends in data relevant to international migration including NHSCR registrations from overseas, accession monitoring reports, applications for National Insurance Numbers and information from the School Census.

Distribution of International Migrants to Scotland

After reviewing the method used to allocate international migration to NHS Board areas and the assumed age/sex distributions, it was decided to make some small improvements to the way in which international out-migrants are allocated to NHS Boards in Scotland, and also to improve the age and sex distributions used for all international migrants. These changes do not affect the method for determining the Scotland total level of international migration.

Previously the estimated Scotland level overseas migration outflow was allocated to NHS Board areas using the proportions recorded in the NHSCR for overseas outflows, even though it is known that the NHSCR under records out-migration to overseas and it is likely that only a sub-group of migrants, possibly families with children remove themselves from

¹ Visitor switchers are visitors who enter or leave the UK intending to stay in the destination country for less than a year, but who actually stay for a year or longer and therefore become migrants.

their GP's register. Therefore, in mid-2005 international migration to NHS Boards was allocated by using both overseas outflows and also moves from Scotland to the rest of the UK recorded on the NHSCR. These averaged proportions were used to allocate international outflows from NHS Boards. As in previous years, the proportion of international inflows to NHS Boards in Scotland recorded on the NHSCR were used to allocate the international inflows. A full description of the previous method is available in the following paper:

<http://www.gro-scotland.gov.uk/statistics/publications-and-data/population-estimates/02-chi-migration.html>

As well as changing the allocation of overseas outflows from NHS Boards in Scotland the age and sex distribution for overseas migrants, both inflows and outflows was improved. Previously it was assumed that the age and sex of overseas migrants was the same as that of internal and cross border migrants. However, evidence from the 2001 Census has shown that the age and sex distribution of in-migrants from overseas is different to the distribution of internal migrants within Scotland and to/from the rest of the UK. Therefore, it was decided to use the overseas inflow from the NHSCR to give an age and sex distribution to international in-migrants, as when the distribution was compared with Census data it was very similar. Unfortunately there is no reliable age and sex information for people leaving Scotland to go overseas. However, it is known from comparing distributions of in and out flows at the UK level from the IPS that the distributions of in and out flows are different. Therefore, it was decided that the international inflow distribution recorded on the NHSCR could not be used for the outflows and investigation showed that the distribution from moves to the rest of the UK recorded by the NHSCR, seemed to give the most plausible alternative, hence it was used.

The issue of how international migration is allocated to NHS Boards will be considered further once the results of the work being carried out as part of the quality review into international migration are known.

Unmeasured Migration

The results of the 2001 Census indicated that the previously published 2000 mid-year estimates had been overestimated by some 50,000 as a result of cumulative errors in estimating migration (mostly by young men) during the 1980s and 1990s. As a result, the migration estimates for 1982-2000 were revised. It is likely that these migration errors are the result of an underestimation of young male migration from Scotland to the rest of the world during this period, but if moves from Scotland to the rest of the UK have been under-recorded, the implied increase in overseas migration would be less.

To ensure that migration estimates do not continue to be overestimated, an adjustment was included in the 2002 and 2003 mid-year estimates. The estimated civilian migration component included an adjustment for unmeasured migration. At the Scotland level, this amounted to an outflow of -2,600. Further investigation has shown that this adjustment should be -1,500 and this is the adjustment which has been used in mid-2004 and mid-2005 estimates. It is planned to look at this element of unmeasured migration again in conjunction with other development work on migration. Further work will make it possible to provide historic estimates of flows between Scotland and the rest of the UK and overseas consistent with the revised population estimates. More information on the cumulative migration error since 1981 can be found in the GROS paper "Comparison with Previous Estimates and Implications for Revisions" on the GROS website through the

following link <http://www.gro-scotland.gov.uk/files/compest.pdf> or by contacting GROS Customer Services.

7. Notes on Statistical Publications

ENQUIRIES ABOUT THIS PUBLICATION Enquiries should be addressed to: *Statistics Customer Services, General Register Office for Scotland, Ladywell House, Edinburgh, EH12 7TF* Telephone: (0131) 314 4243, Fax: (0131) 314 4696, E-mail: customer@gro-scotland.gsi.gov.uk

NATIONAL STATISTICS This is a National Statistics publication. It has been produced to high professional standards set out in the National Statistics Code of Practice and Release Practice Protocol (http://www.statistics.gov.uk/about_ns/cop/default.asp). These statistics undergo regular quality assurance reviews to ensure that they meet customer needs. They are produced free from any political interference.

THE GENERAL REGISTER OFFICE FOR SCOTLAND (GROS) GROS is the department of the devolved Scottish Administration responsible for the registration of births, marriages, civil partnerships, deaths, divorces and adoptions in Scotland. We are responsible for the Census of Population in Scotland which we use, with other sources of information, to produce population and household statistics. We make available important information for family history. Our website is www.gro-scotland.gov.uk.

OTHER GROS STATISTICS Further detailed statistics produced by GROS are available from the statistics pages of the GROS website (<http://www.gro-scotland.gov.uk/statistics/index.html>). Statistics from the 2001 Census are on the Scotland's Census Results On-Line website (www.scrol.gov.uk) and on the Census section of the main website (<http://www.gro-scotland.gov.uk/census/index.html>).

Information about future publications is provided on the GROS website (<http://www.groscotland.gov.uk/futurepb.html>). If you would like to receive notification of forthcoming statistical publications, you can register your interest on the Scottish Executive ScotStat web site at www.scotland.gov.uk/Topics/Statistics/scotstat/Intro.

COMPLAINTS AND SUGGESTIONS If you are not satisfied with our service, please write to Kirsty MacLachlan, Head of Demography Division, Room 1/2/7, Ladywell House, Ladywell Road, Edinburgh, EH12 7TF, Telephone: (0131) 314 4242, E-mail: kirsty.maclachlan@gro-scotland.gsi.gov.uk.

We also welcome any comments or suggestions that would help us to improve our standards of service.

RELATED ORGANISATIONS

ORGANISATION	CONTACT
SCOTTISH EXECUTIVE (SE): The SE forms the bulk of the devolved Scottish Administration. The aim of the statistical service in the SE is to provide relevant and reliable statistical information, analysis and advice that meets the needs of government, business and the people of Scotland	<i>Ryan Stewart, Office of the Chief Statistician, Scottish Executive, 3rd Floor West Rear, St Andrews House, Edinburgh, EH1 3DG</i> Telephone: (0131) 244 0442 Fax: (0131) 244 0335 E-mail: statistics.enquiries@scotland.gsi.gov.uk Website: http://www.scotland.gov.uk/Topics/Statistics
The OFFICE FOR NATIONAL STATISTICS (ONS) is responsible for producing a wide range of economic and social statistics. It also, for England and Wales, registers life events and holds the Census of Population.	<i>Customer Contact Centre, Room 1.015, Office for National Statistics, Cardiff Road, Newport, NP10 8XG</i> Telephone: 0845 601 3034 Minicom: 01633 812399 Fax: 01633 652747 E-mail: info@statistics.gsi.gov.uk Website: www.statistics.gov.uk
The NORTHERN IRELAND STATISTICS AND RESEARCH AGENCY (NISRA) is Northern Ireland's official statistics organisation. The Agency also has responsibility, in Northern Ireland, for the registration of births, marriages, adoptions and deaths and the Census of Population.	<i>Northern Ireland Statistics and Research Agency, McAuley House, 2-14 Castle Street, Belfast, BT1 1SA</i> Telephone 028 9034 8100 Fax 028 9034 8106 Website: www.nisra.gov.uk

© Crown Copyright. Brief extracts from the Crown Copyright material in General Register Office for Scotland publications may be reproduced provided the source is fully acknowledged.