

Figure 1 Estimated population of Scotland. 1951-2009

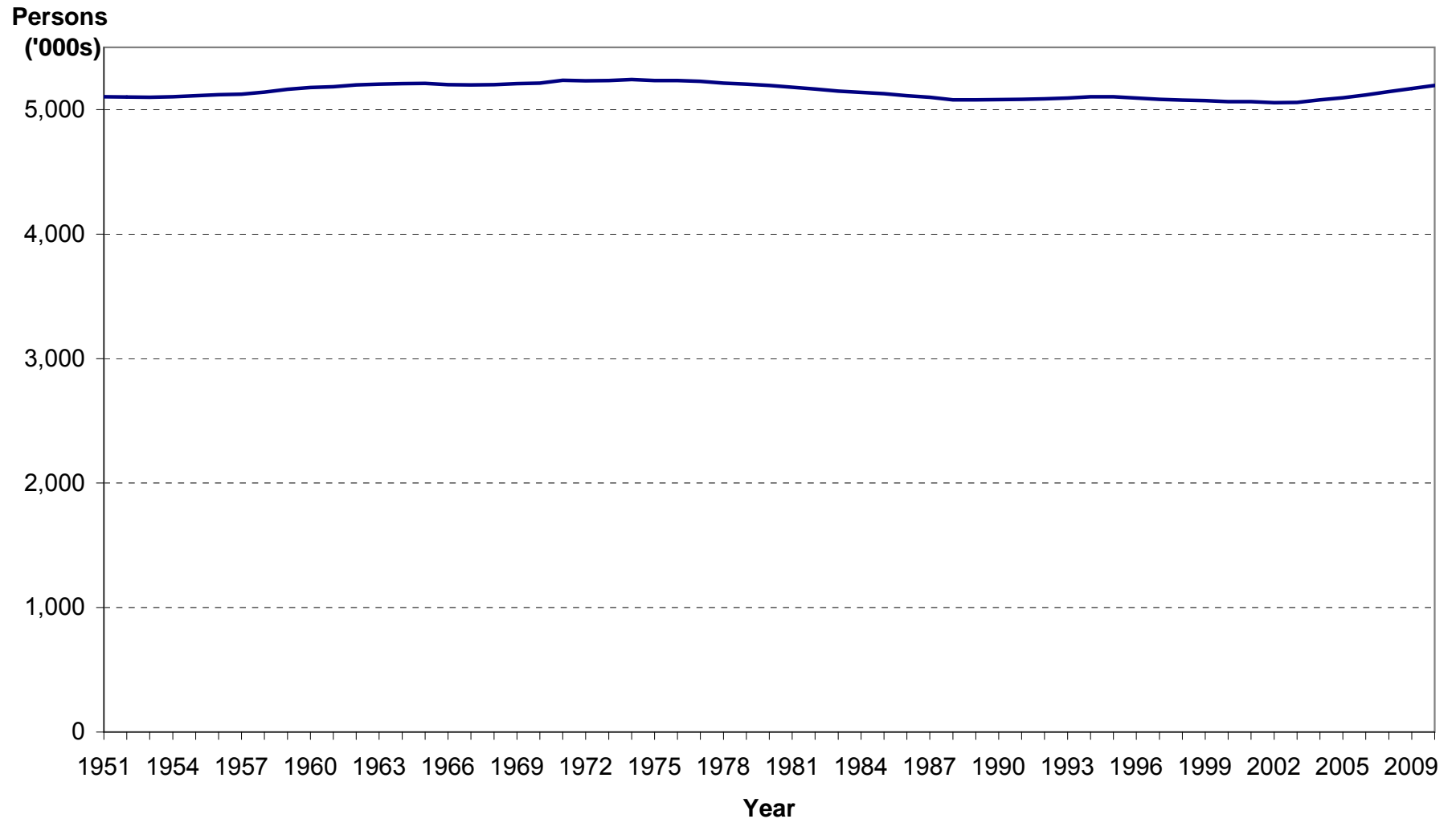


Figure 2 Natural change and net migration, 1951-2009

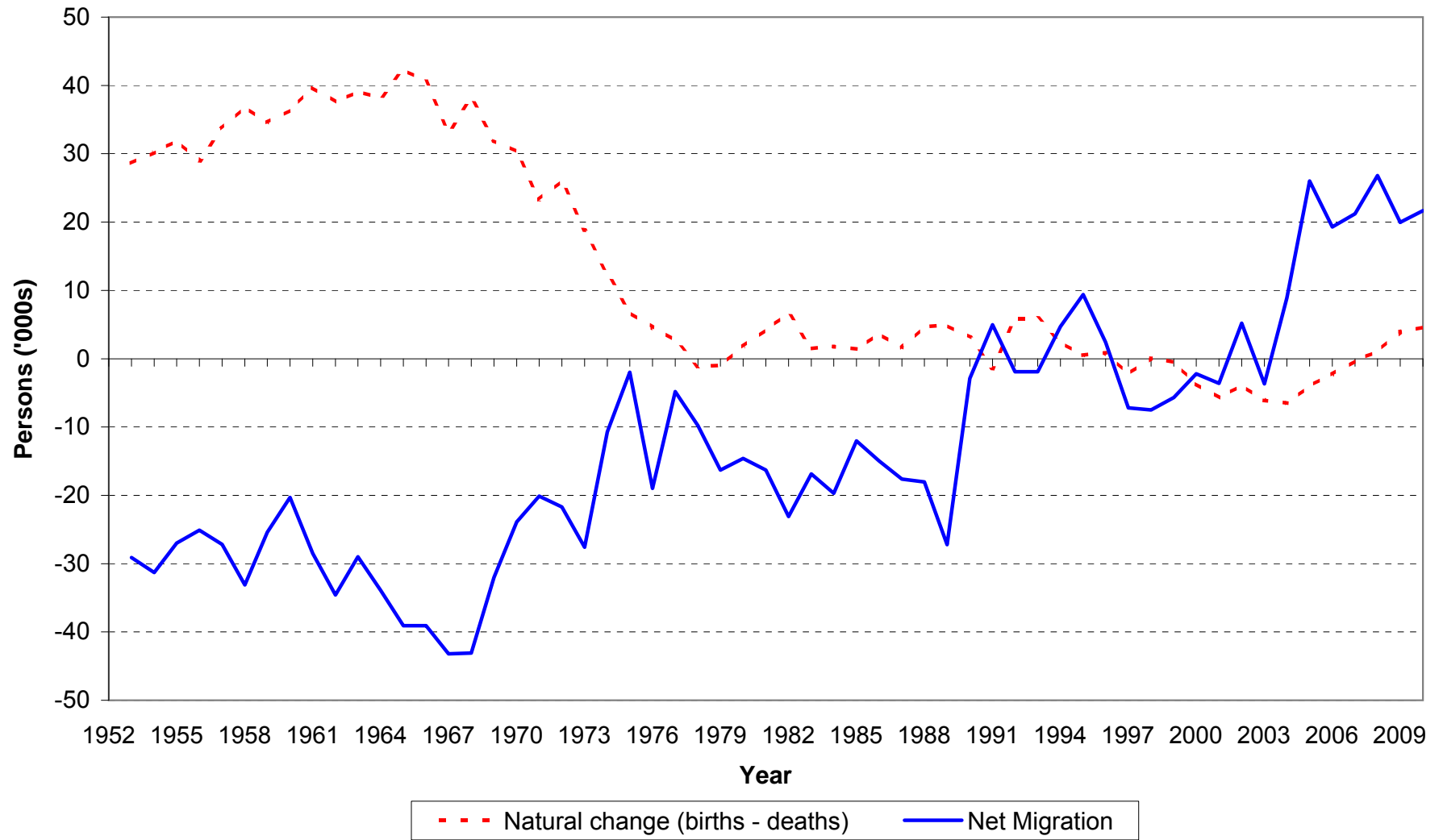


Figure 3 Estimated population by age and sex, 30 June 2009

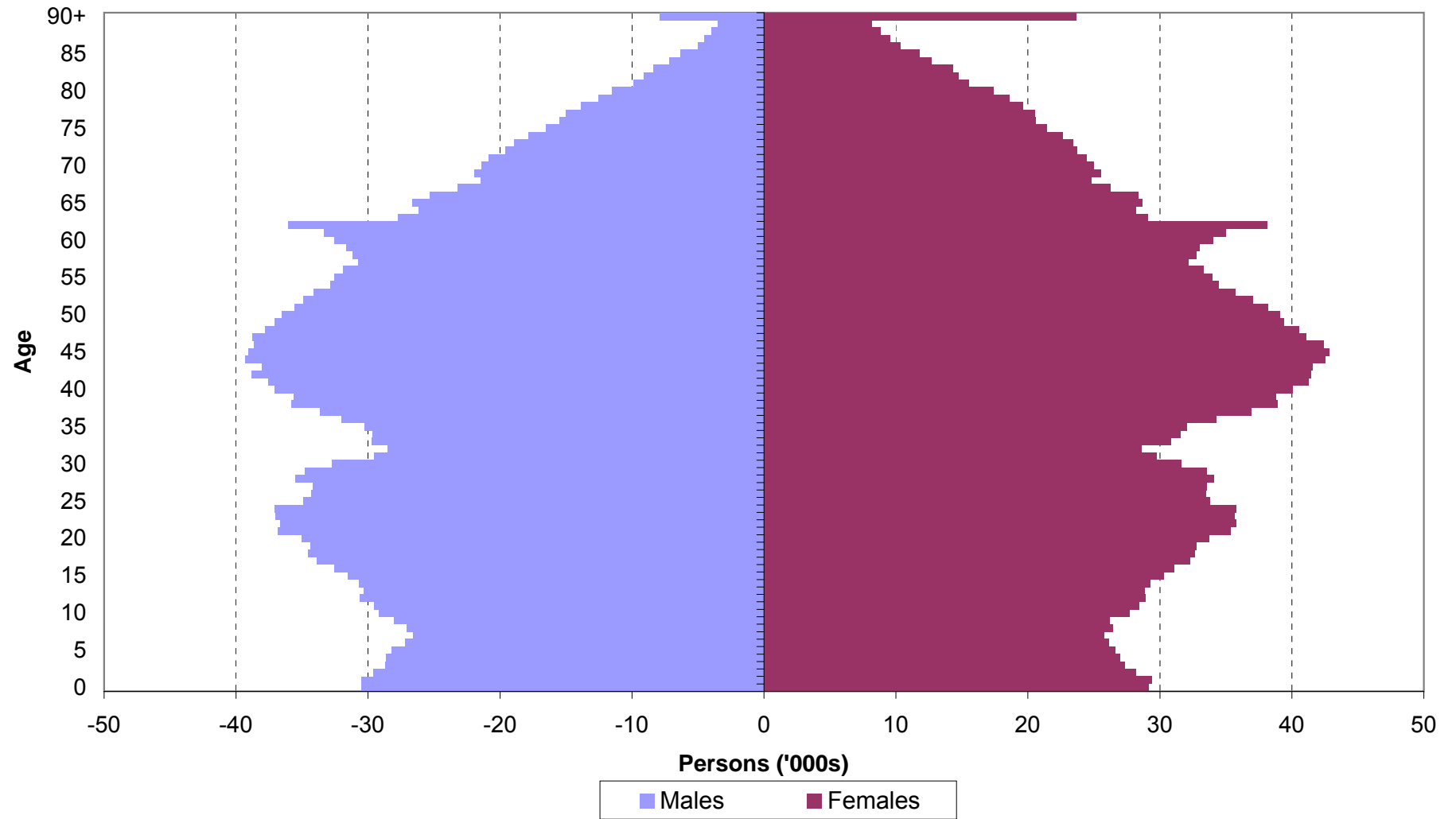
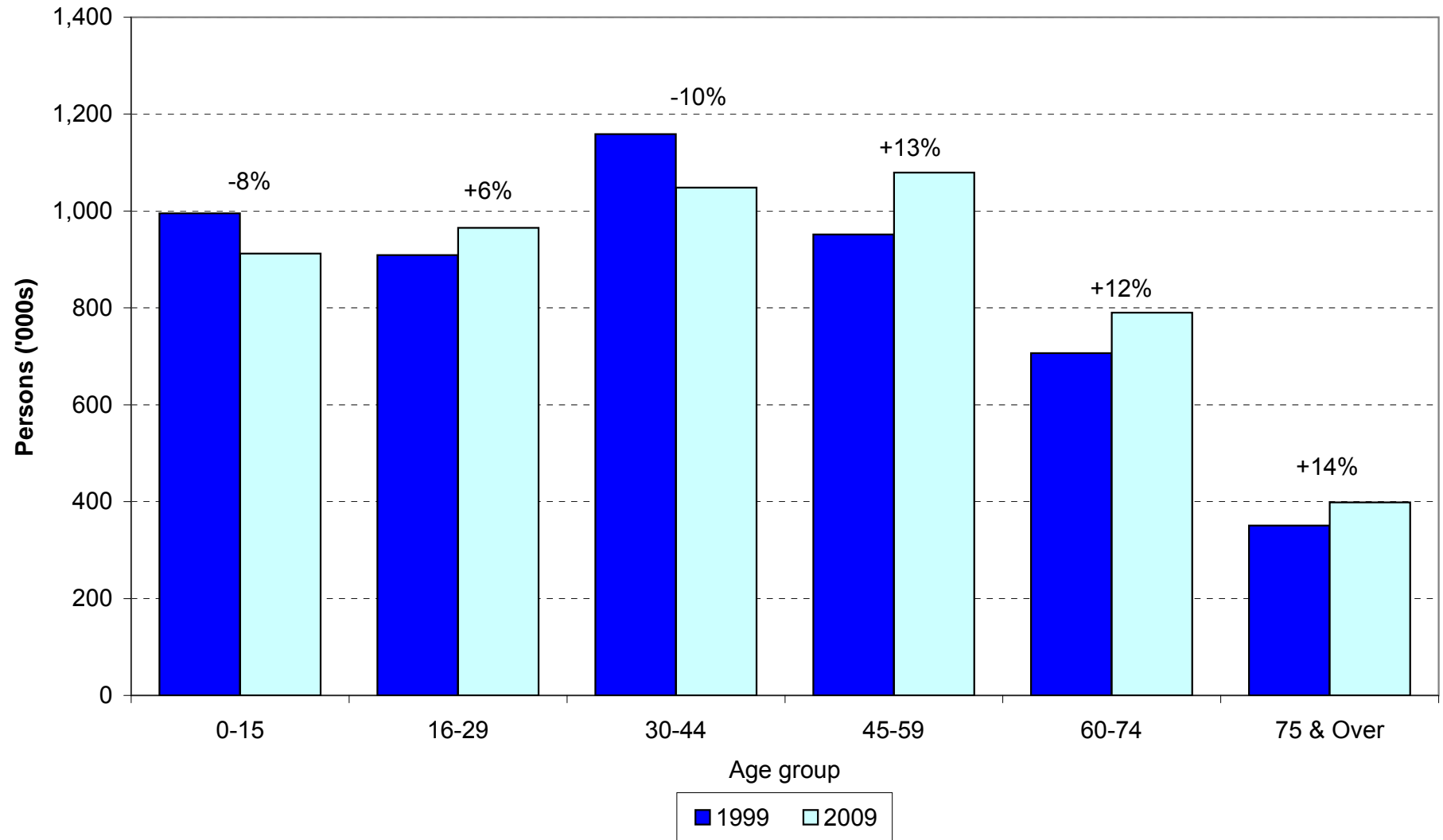
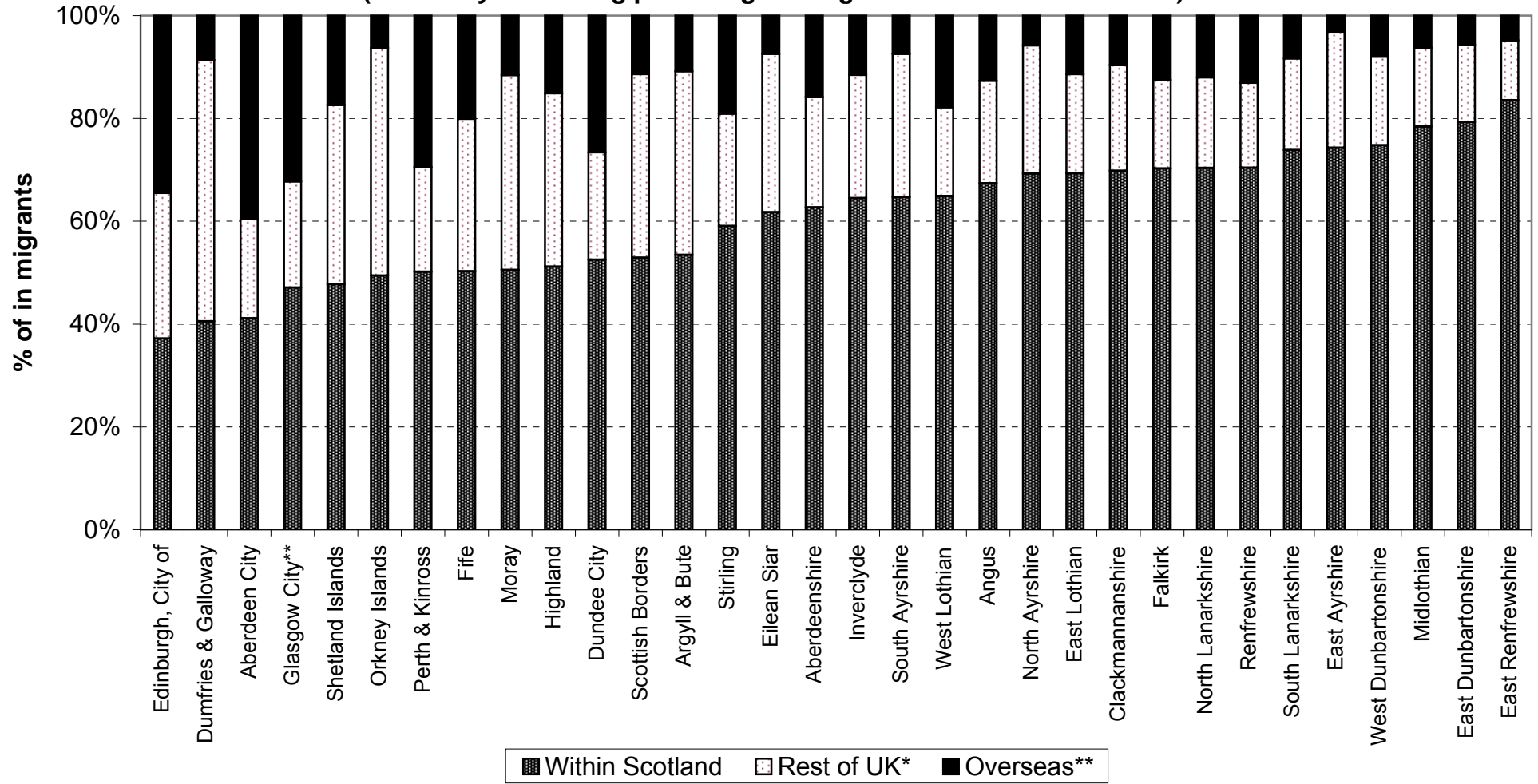


Figure 4 The changing age structure of Scotland's population, 1999-2009



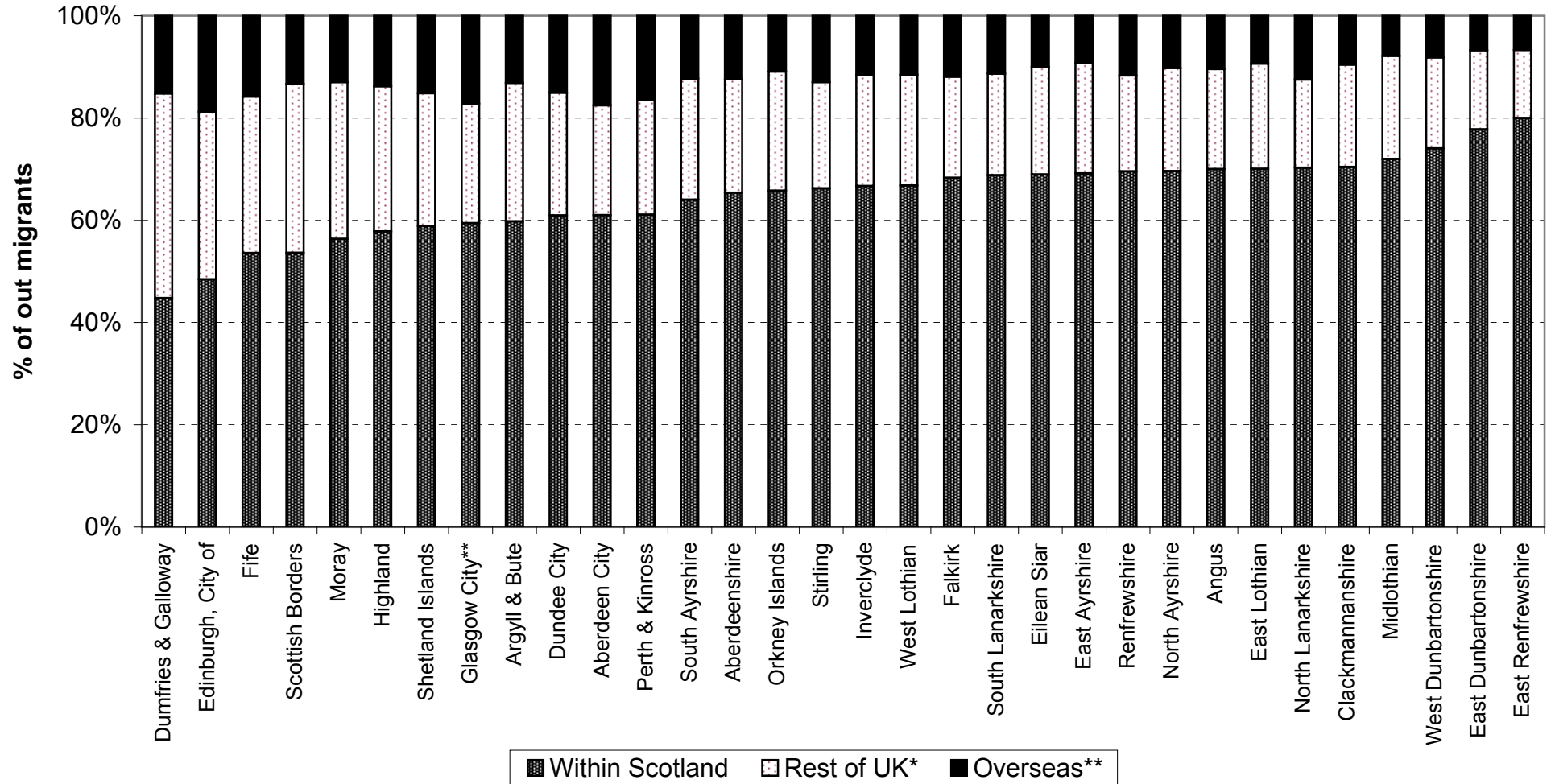
**Figure 5a Origin of in-migrants by Council areas, 2008-2009,
(ranked by increasing percentage of migrants from within Scotland)**



* Includes moves from the armed forces

** Includes asylum seekers

**Figure 5b Destination of out-migrants by Council areas, 2008-2009,
(ranked by increasing percentage of migrants to within Scotland)**



* Includes moves to the armed forces

** Includes asylum seekers returning to their country

Figure 6a Percentage change in population, Council areas, 1999-2009 (Map)

% population change

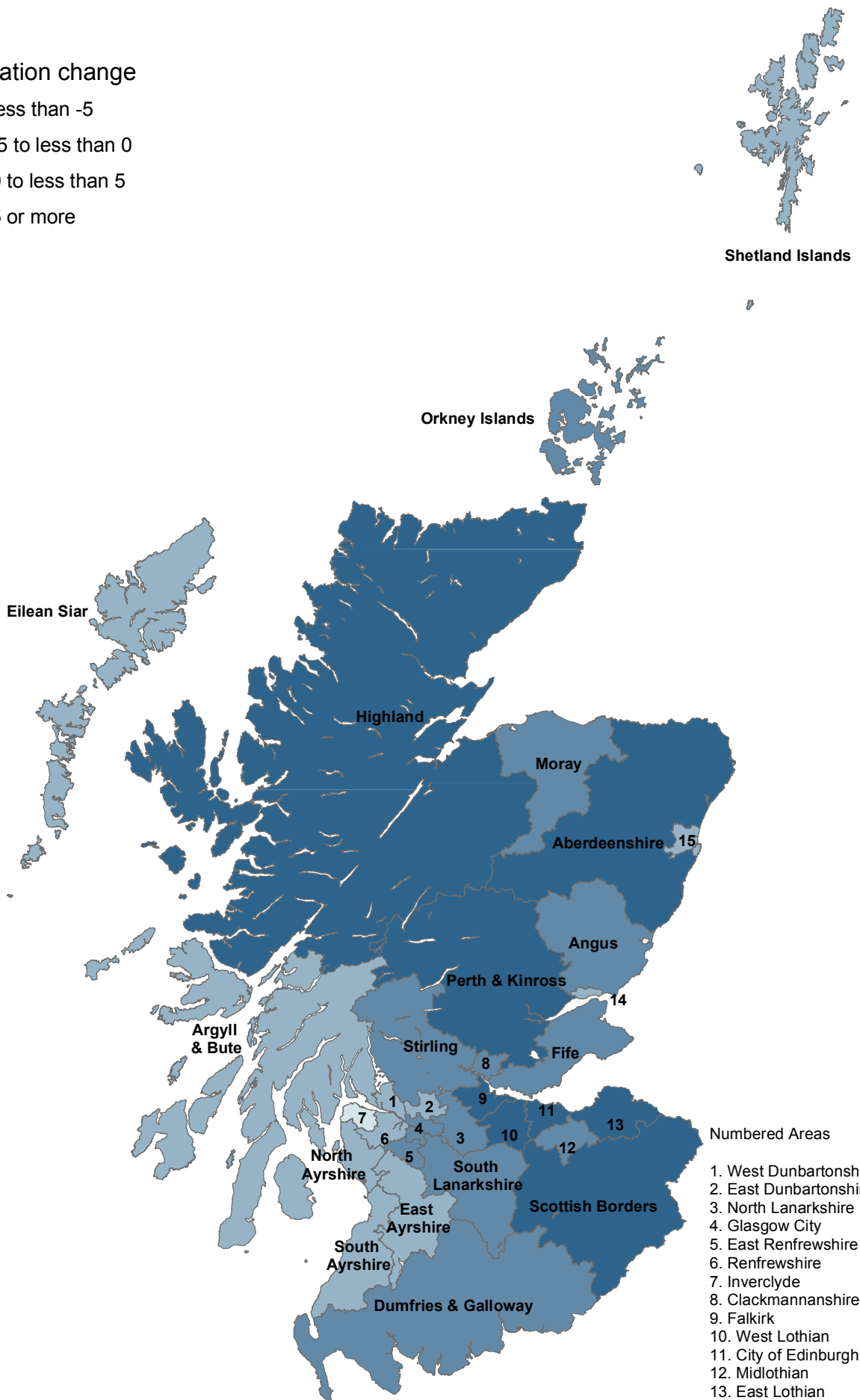
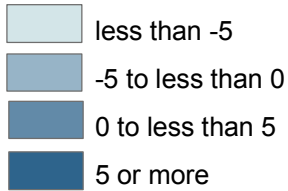


Figure 6b Percentage change in population, Council areas, 1999-2009

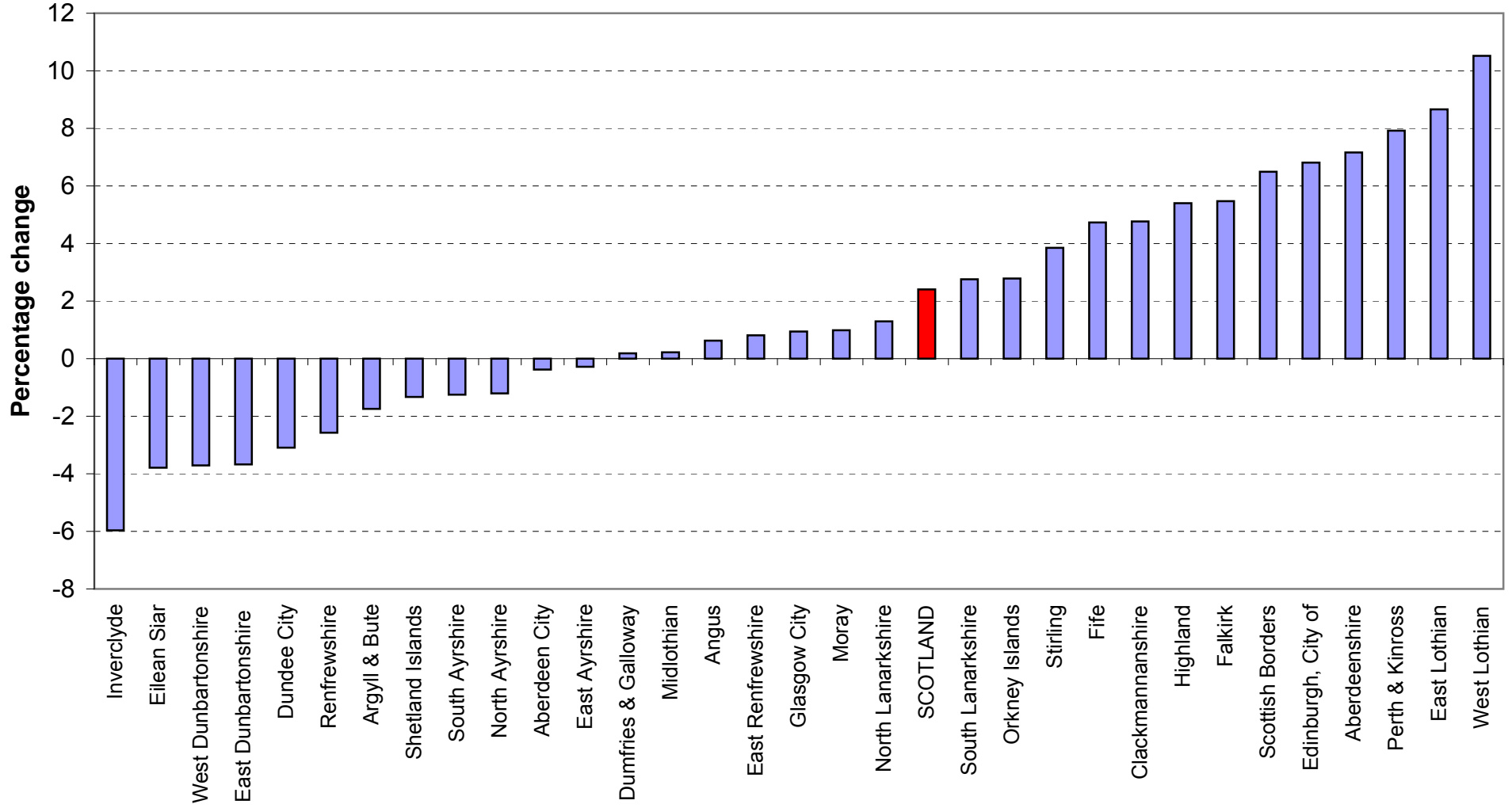





Figure 7a Percentage change in population, NHS Board areas, 1999-2009 (Map)

% population change

-  less than 0
-  0 to less than 4
-  4 or more

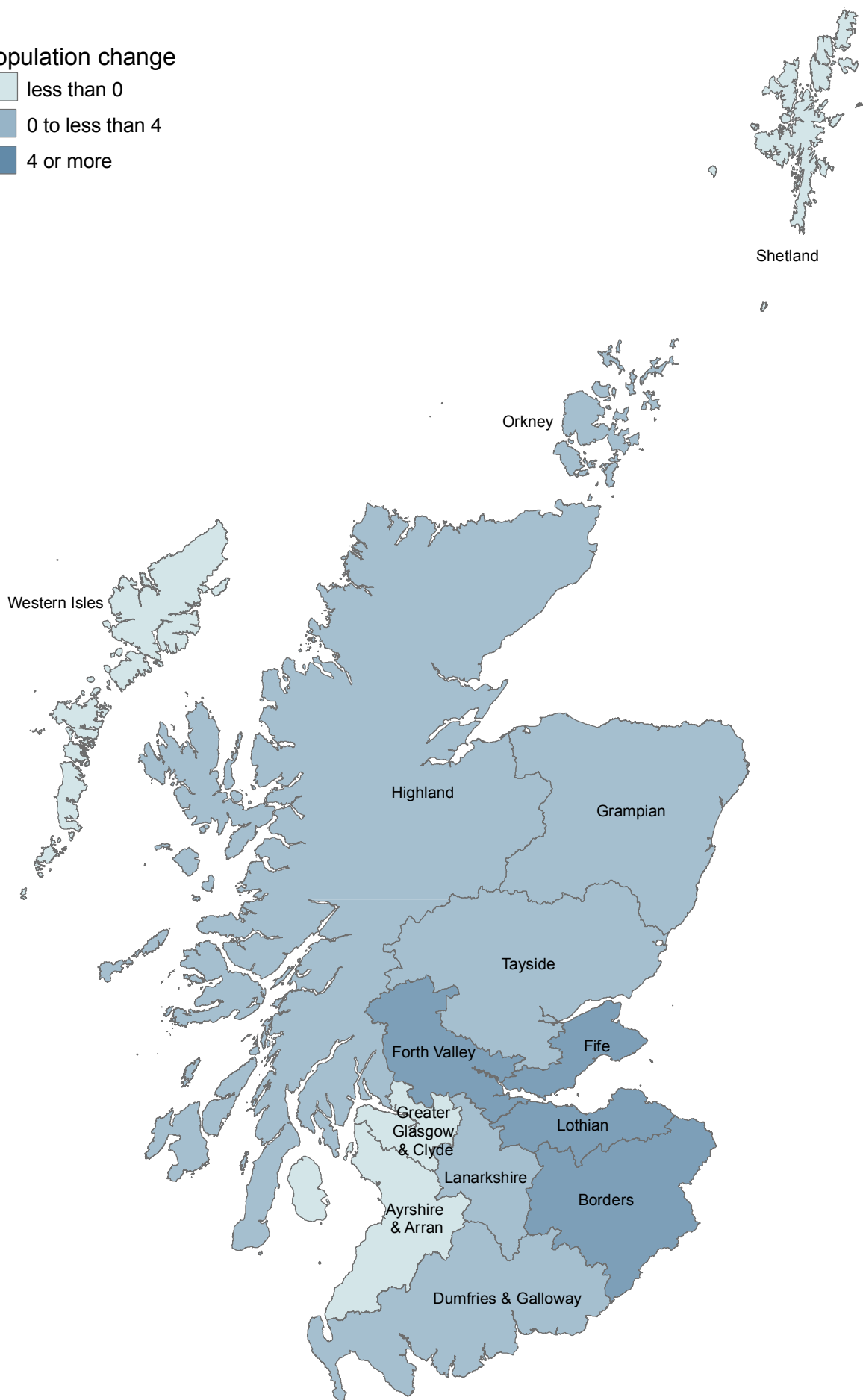
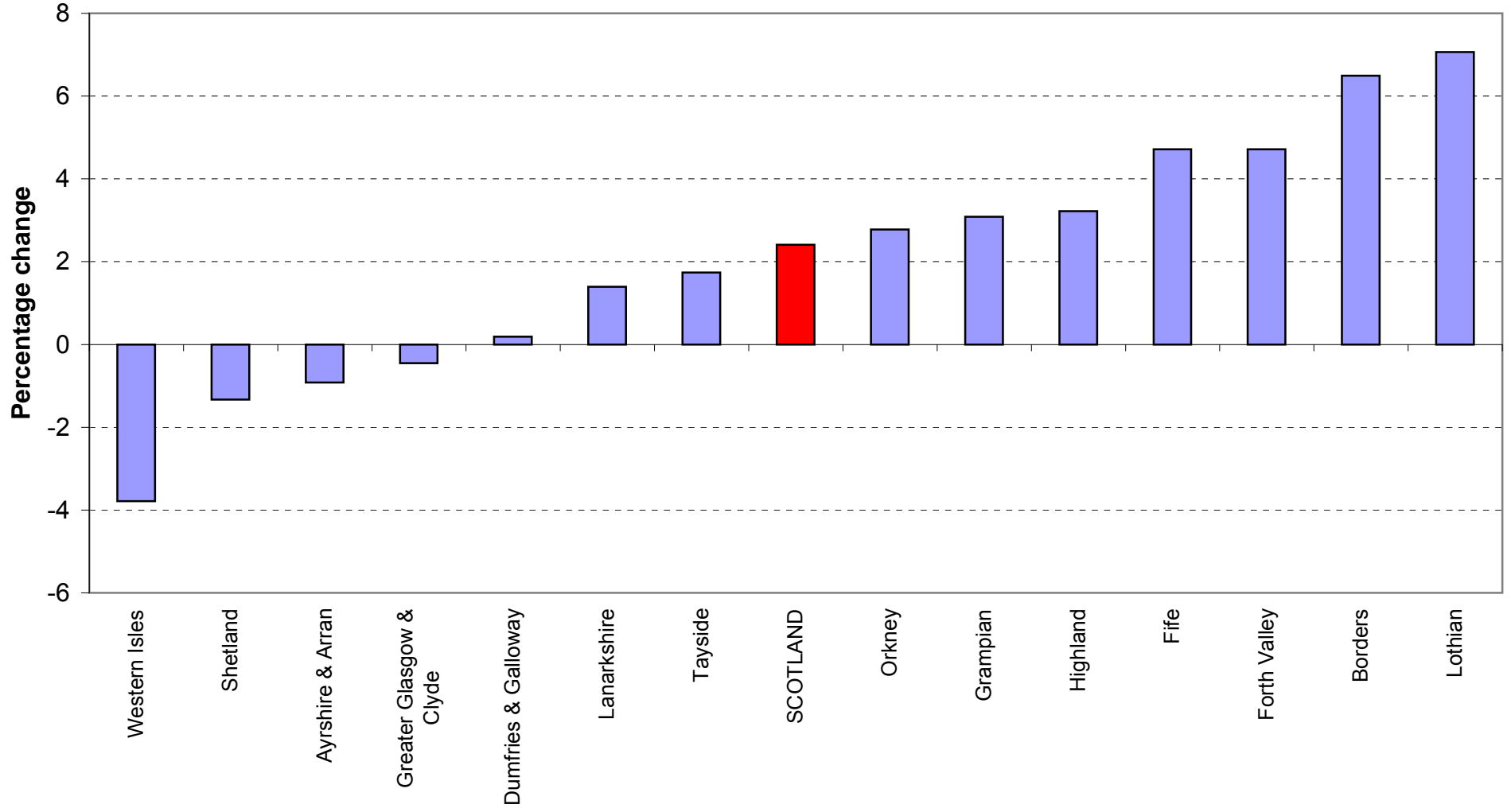
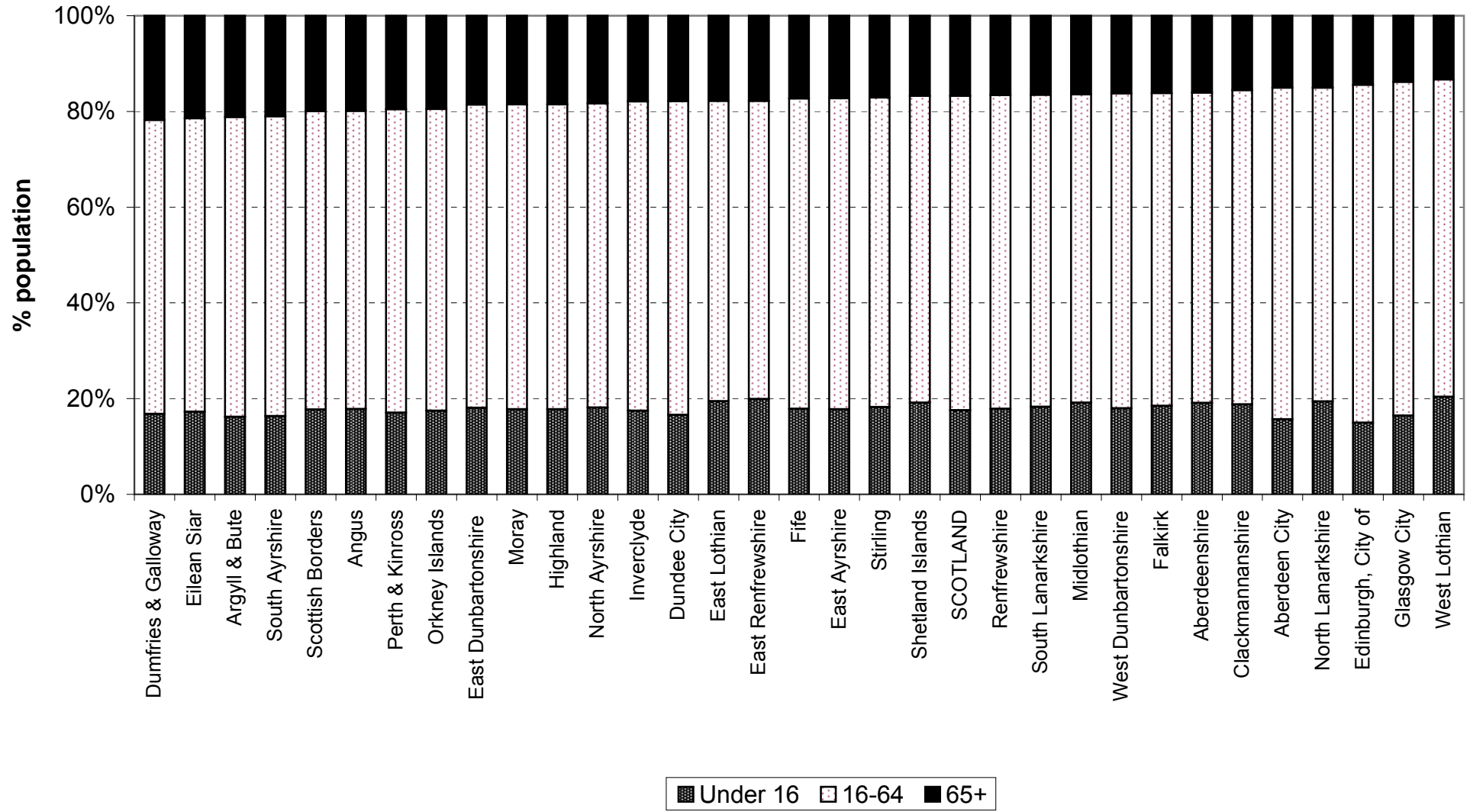


Figure 7b Percentage change in population, NHS Board areas, 1999-2009



**Figure 8 Age structure of Council areas, 30 June 2009 (% under 16, 16-64 and 65+),
(ranked by percentage aged 65+)**



**Figure 9 Age structure of NHS Board areas, 30 June 2009 (% under 16,16-64 and 65+),
(ranked by percentage aged 65+)**

