

Figure 1 Estimated population of Scotland, 1951-2010

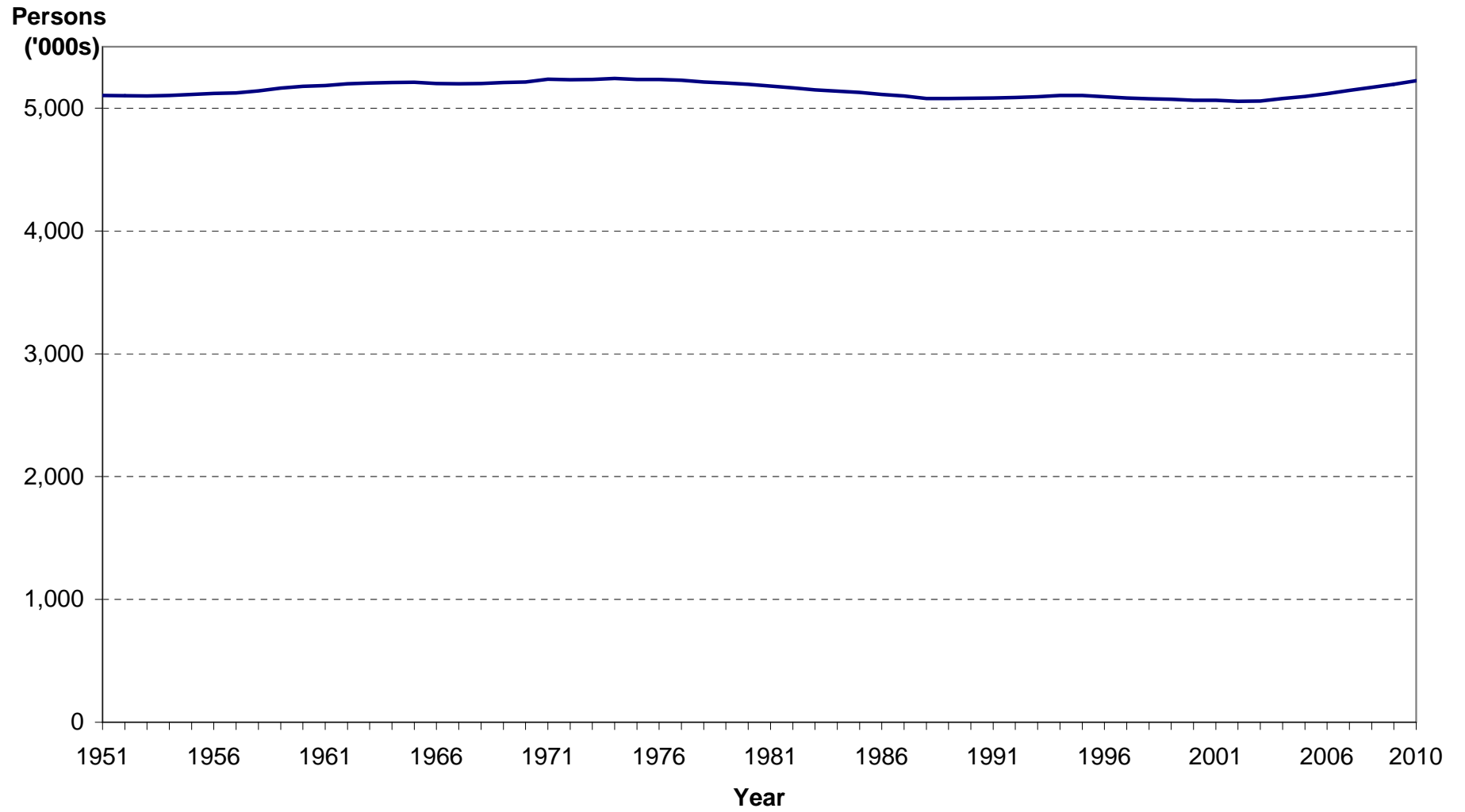


Figure 2 Natural change and net migration, 1951-2010

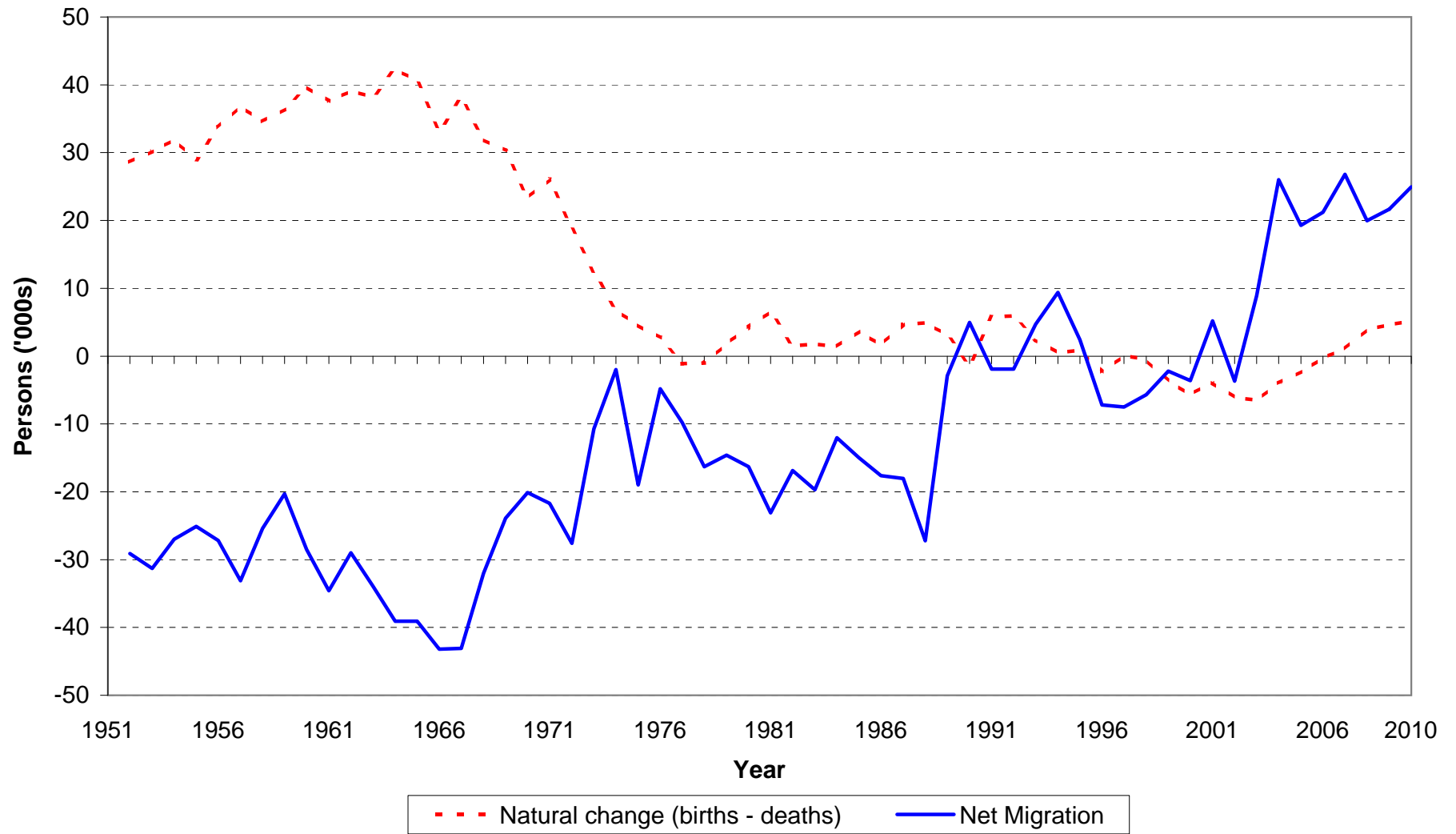


Figure 3 Estimated population by age and sex, 30 June 2010

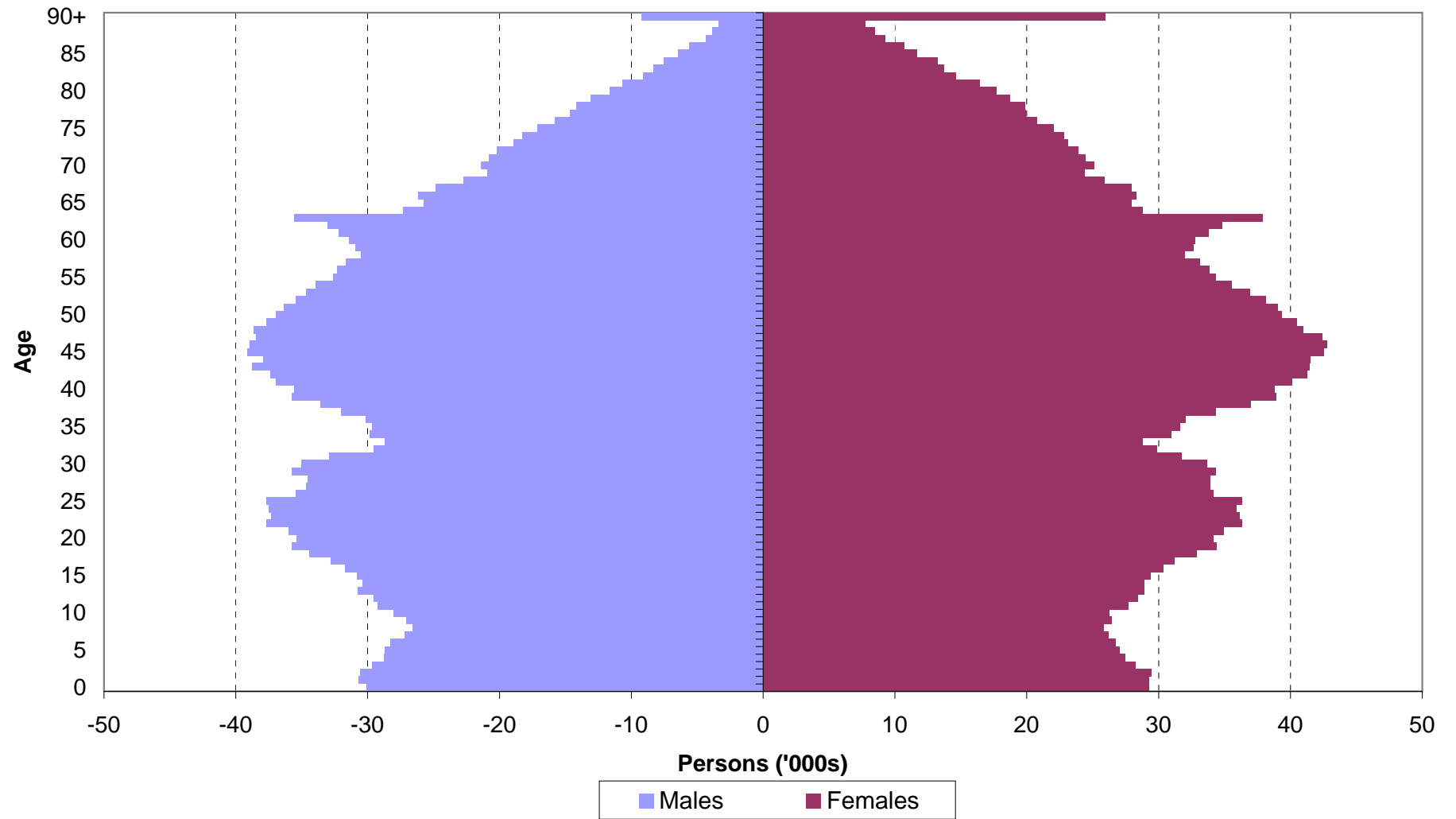
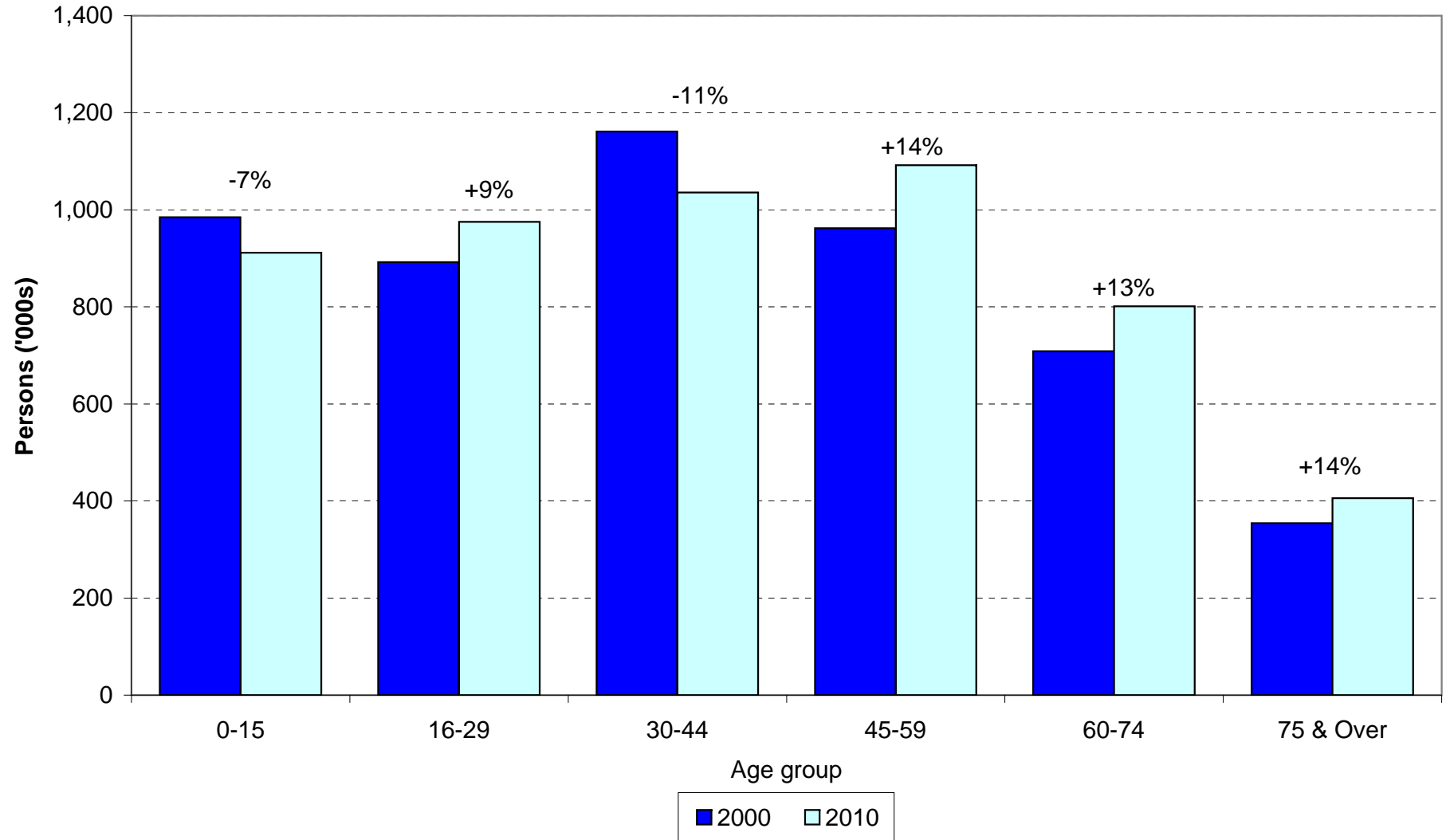
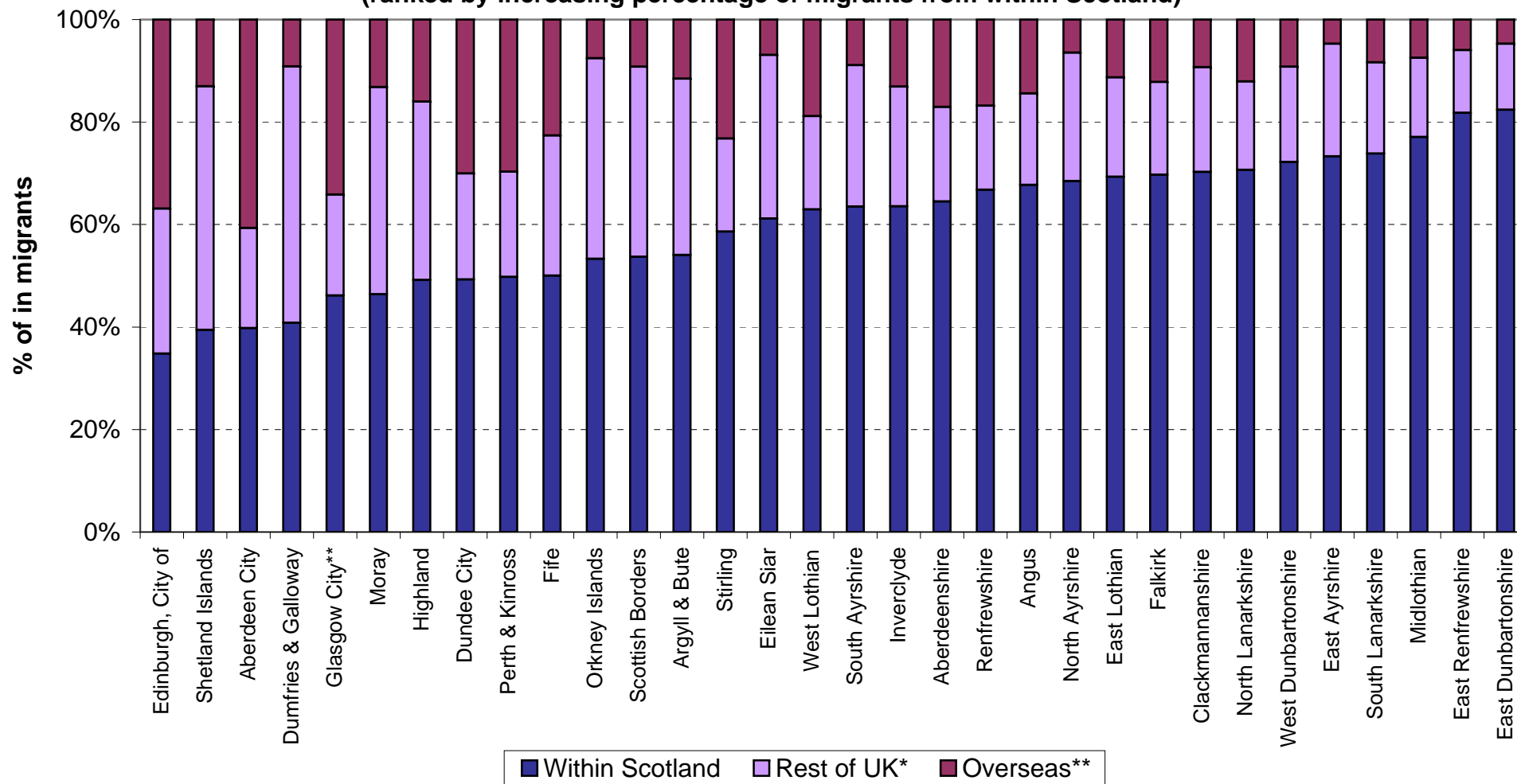


Figure 4 The changing age structure of Scotland's population, 2000-2010



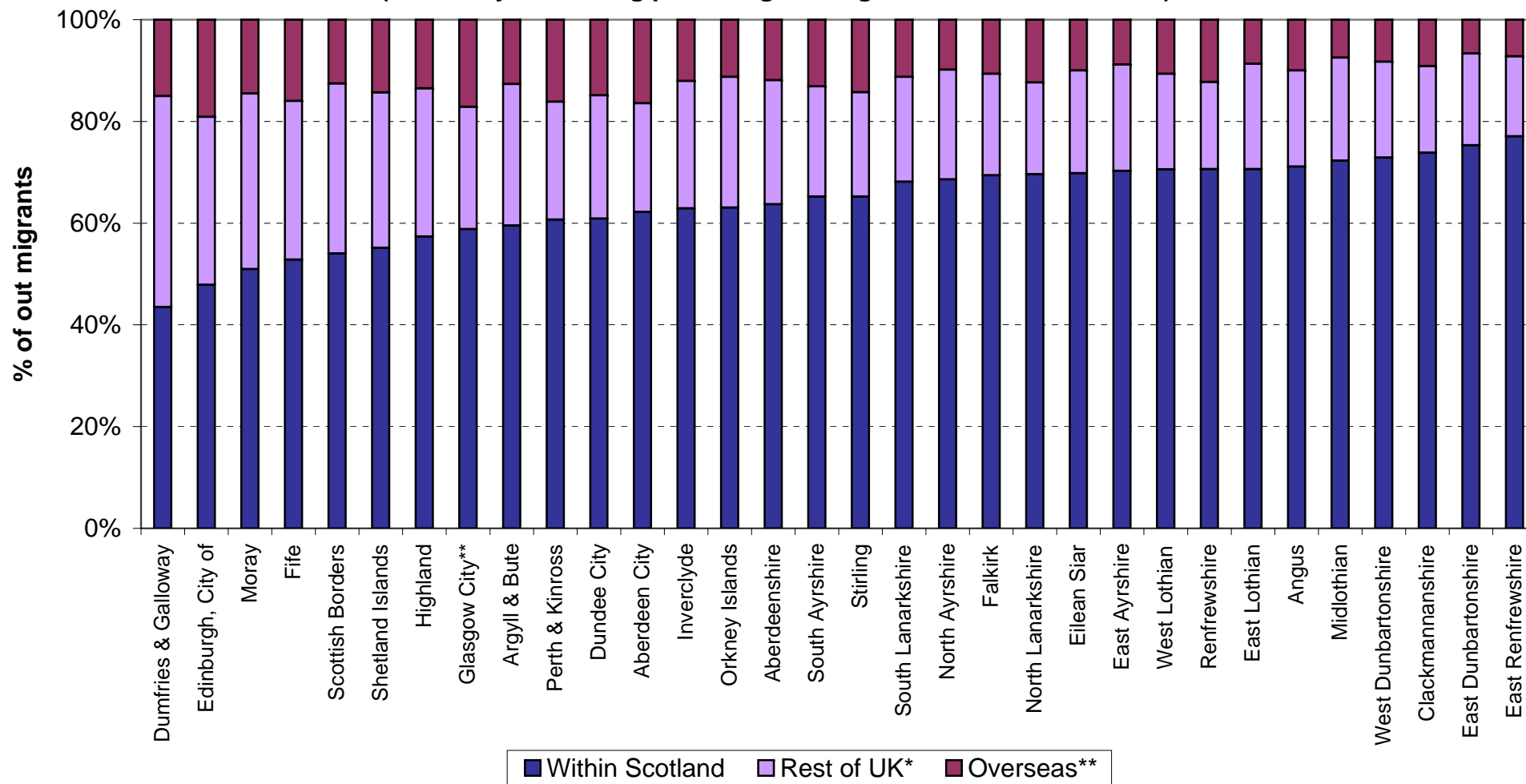
**Figure 5a Origin of in-migrants by Council areas, 2009-2010,
(ranked by increasing percentage of migrants from within Scotland)**



* Includes moves from the armed forces

** Includes asylum seekers

**Figure 5b Destination of out-migrants by Council areas, 2009-2010,
(ranked by increasing percentage of migrants to within Scotland)**

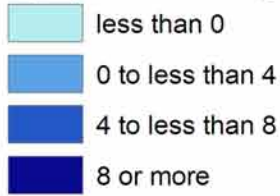


* Includes moves to the armed forces

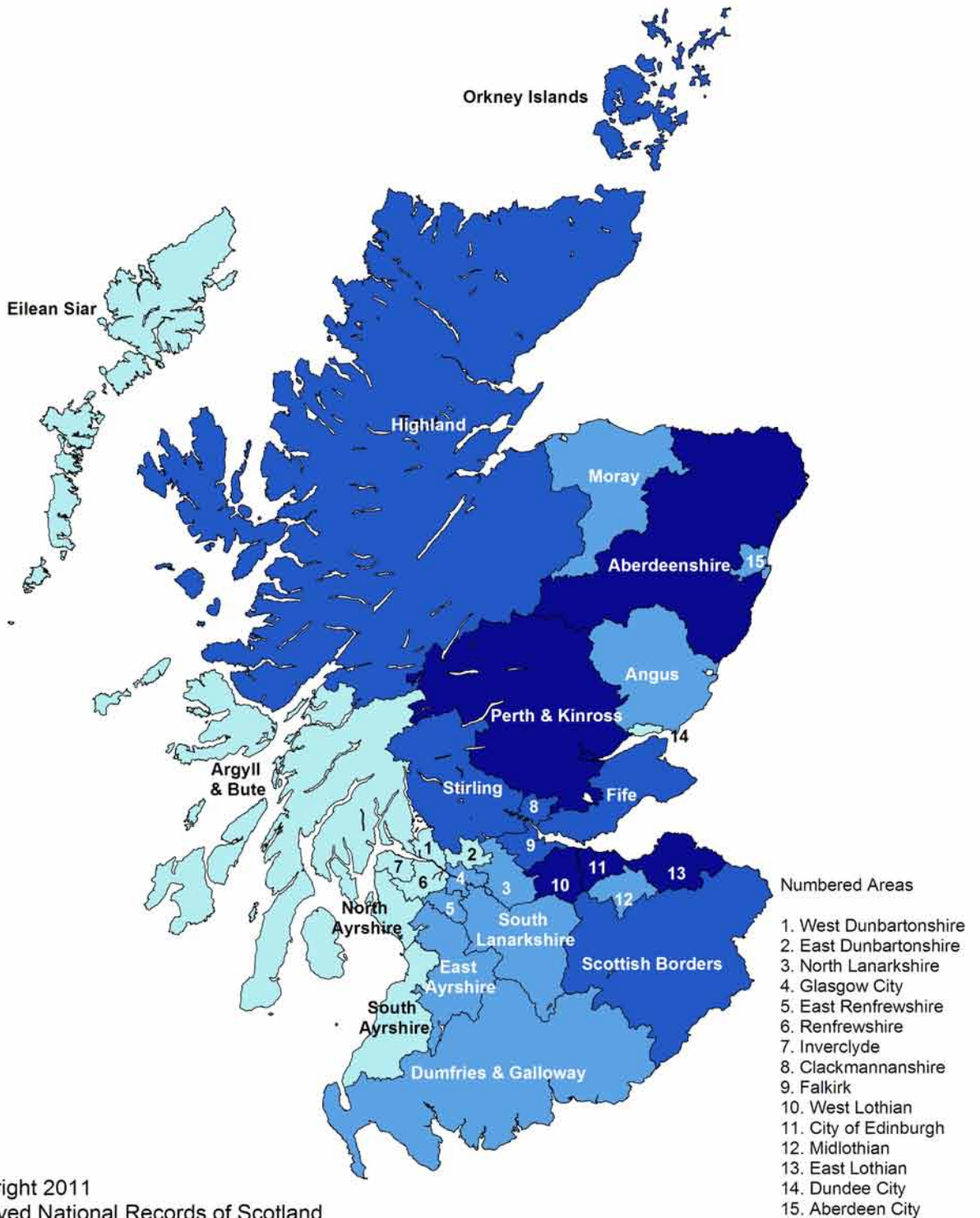
** Includes asylum seekers returning to their country

Figure 6a Percentage change in population, Council areas, 2000-2010 (Map)

% population change



Shetland Islands



Numbered Areas

1. West Dunbartonshire
2. East Dunbartonshire
3. North Lanarkshire
4. Glasgow City
5. East Renfrewshire
6. Renfrewshire
7. Inverclyde
8. Clackmannanshire
9. Falkirk
10. West Lothian
11. City of Edinburgh
12. Midlothian
13. East Lothian
14. Dundee City
15. Aberdeen City

Figure 6b Percentage change in population, Council areas, 2000-2010

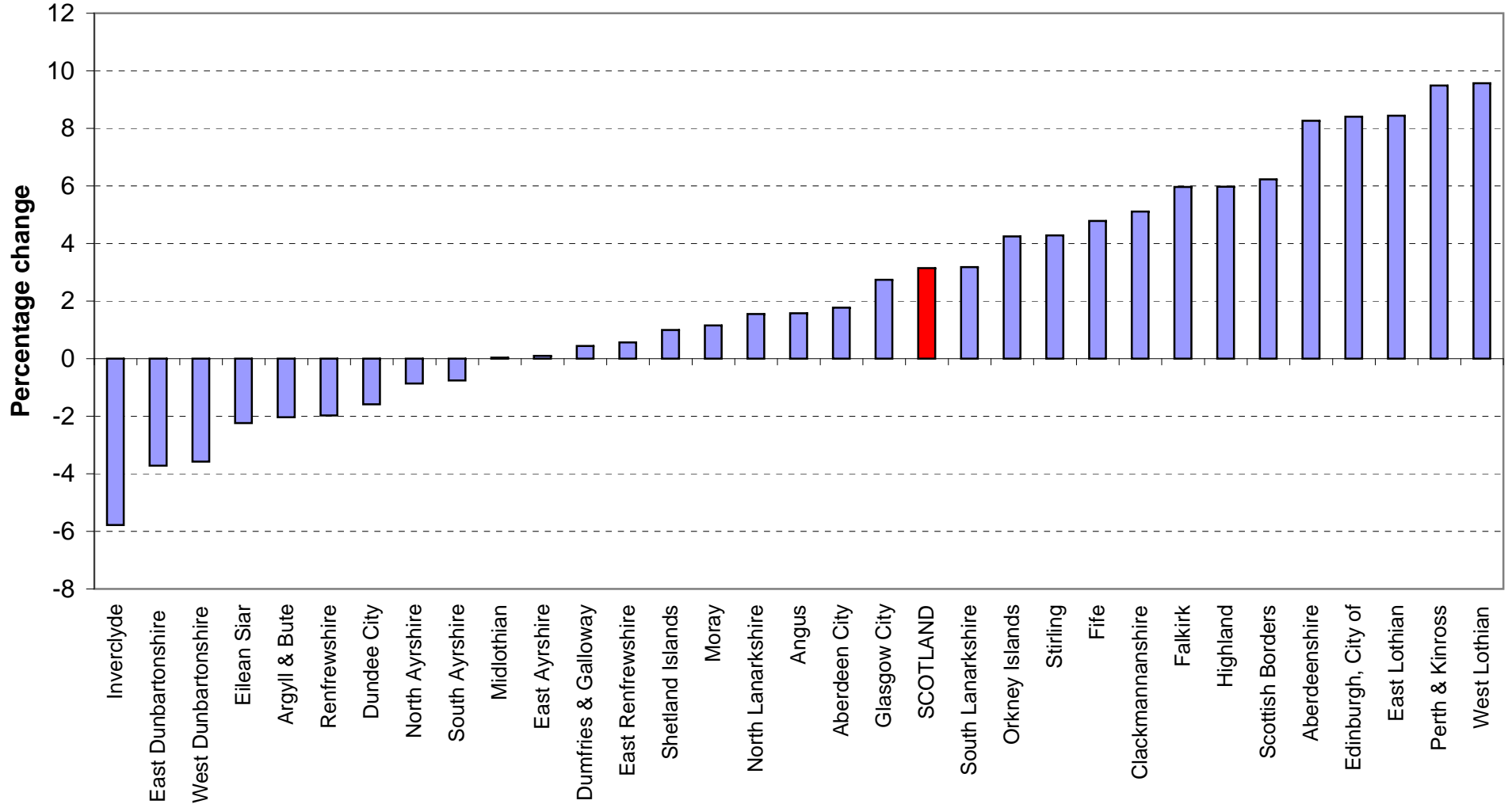


Figure 7a Percentage change in population, NHS Board areas, 2000-2010 (Map)

% population change

- less than 0
- 0 to less than 4
- 4 or more

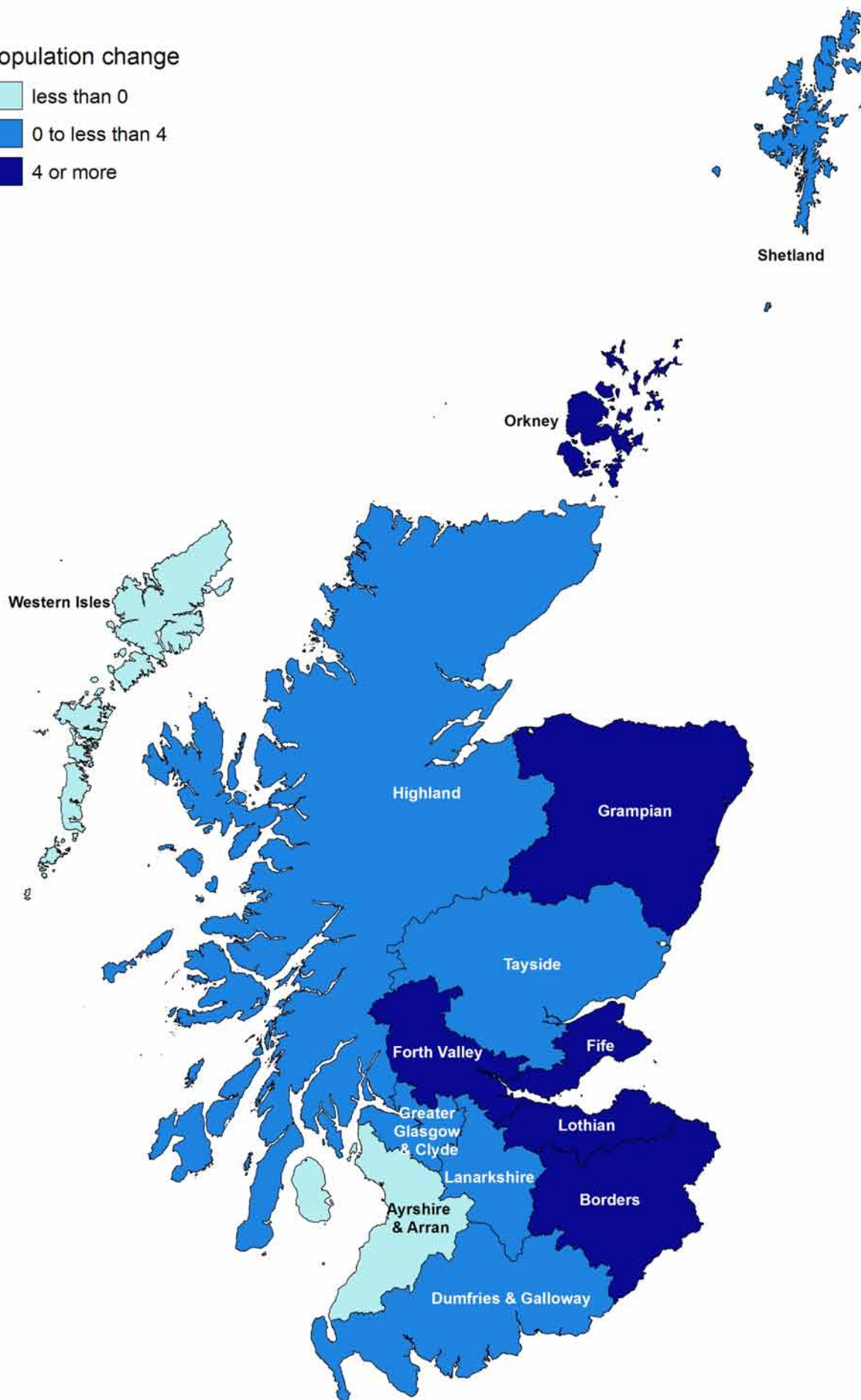
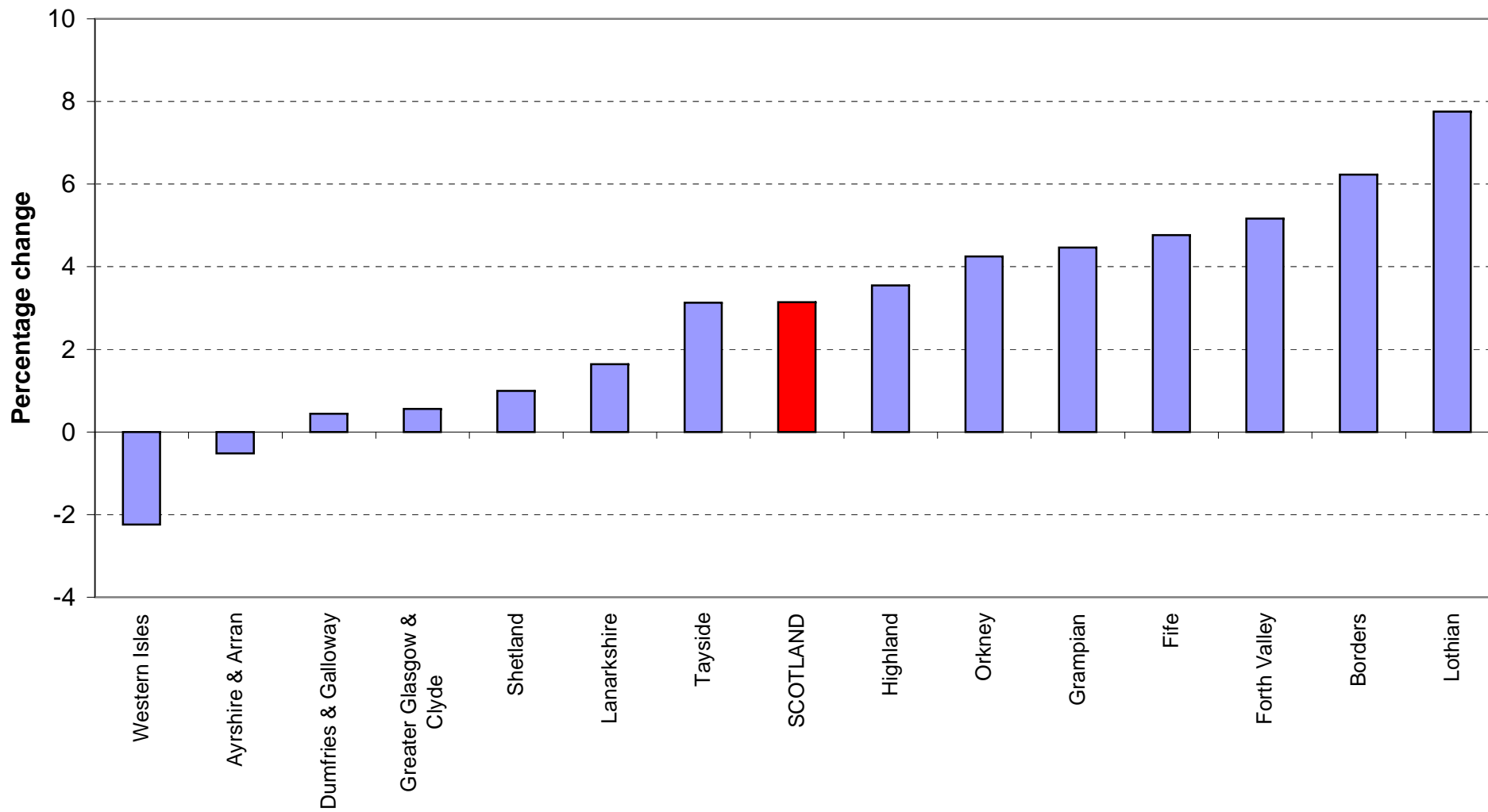
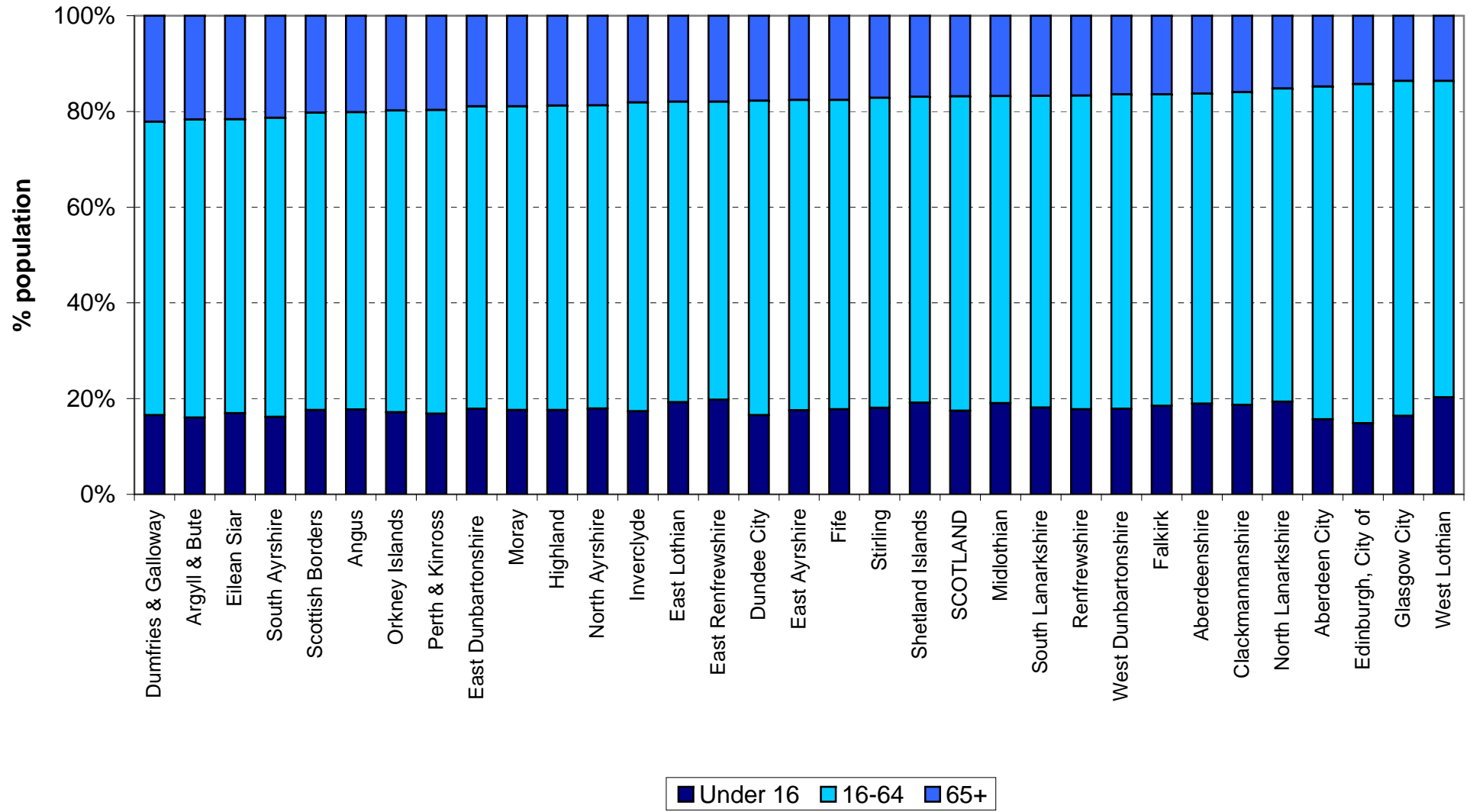


Figure 7b Percentage change in population, NHS Board areas, 2000-2010



**Figure 8 Age structure of Council areas, 30 June 2010 (% under 16, 16-64 and 65+),
(ranked by percentage aged 65+)**



**Figure 9 Age structure of NHS Board areas, 30 June 2010 (% under 16,16-64 and 65+),
(ranked by percentage aged 65+)**

