

NATIONAL RECORDS OF SCOTLAND

preserving the past; recording the present; informing the future

Mid-2010 Population Estimates Scotland

Population estimates by sex, age and administrative area

Published on 27 April 2011

A National Statistics publication for Scotland

National Statistics are produced to high professional standards set out in the National Statistics Code of Practice. They undergo regular quality assurance reviews to ensure that they meet customer needs. They are produced free from any political interference.



NATIONAL RECORDS OF SCOTLAND joins together



General Register Office
for
SCOTLAND
information about Scotland's people



Contents

1.	Background	7
2.	The Population of Scotland	7
3.	The Age and Sex Structure of the Population	9
4.	Results for Administrative Areas.....	11
4.1	Population Change 2009-2010	11
4.2	Components of Migration 2009-2010	11
4.3	Population Change 2000-2010	14
4.4	Age and Sex Structure of Administrative Areas in Scotland	18
5.	Population Density.....	20
6.	Notes and Definitions	40
7.	Notes on Statistical Publications.....	45

List of Tables

Table 1	Estimated population by age and sex, Scotland: 30 June 2010.....	21
Table 2	Estimated population by sex, single year of age and administrative area: 30 June 2010.....	22
Table 3	Estimated population by sex, five year age group and administrative area: 30 June 2010.....	31
Table 4	Components of population change by administrative area: 2009-2010	34
Table 5	Components of migration by administrative area: 2009-2010	35
Table 6	Components of population change by administrative area: 2000-2010	36
Table 7	Age and sex structure of administrative areas: 30 June 2010.....	37
Table 8	Rest of UK/Overseas moves by age group: 2009-2010	38
Table 9	Land area and population density by administrative area: 30 June 2010	39

List of Figures

Figure 1	Estimated population of Scotland, 1951-2010	8
Figure 2	Natural change and net migration, 1951-2010	9
Figure 3	Estimated population by age and sex, 30 June 2010	10
Figure 4	The changing age structure of Scotland's population, 2000-2010	11
Figure 5a	Origin of in-migrants by Council areas, 2009–2010, (ranked by increasing percentage of migrants from within Scotland)	13
Figure 5b	Destination of out-migrants by Council areas, 2009–2010 (ranked by increasing percentage of migrants to within Scotland)	13
Figure 6a	Percentage change in population, Council areas, 2000-2010 (Map)	15
Figure 6b	Percentage change in population, Council areas, 2000-2010 (Chart)	16
Figure 7a	Percentage change in population, NHS Board areas, 2000-2010 (Map)	17
Figure 7b	Percentage change in population, NHS Board areas, 2000-2010 (Chart)	18
Figure 8	Age structure of Council areas, 30 June 2010 (% under 16, 16-64 and 65+), (ranked by percentage aged 65+)	19
Figure 9	Age structure of NHS Board areas, 30 June 2010 (% under 16, 16-64 and 65+), (ranked by percentage aged 65+)	19

Main Points

The key points in this publication are:

- The estimated population of Scotland on 30 June 2010 was 5,222,100, a rise of 28,100 on the previous year and the highest population since 1977;
- The population increased because 5,188 more people were born than died, and because immigration exceeded emigration by 25,000. Other minor changes resulted in a loss of 2,056 people;
- Over the 10 years between mid-2000 and mid-2010, Scotland's population increased by 3.1 per cent (+159,160) from 5.06 million to 5.22 million;
- In the twelve months up to 30 June 2010, the number of births exceeded the number of deaths by 5,188, the largest natural increase since 1991-92;
- Over the year there was a net migration gain of 25,000 people. This includes net gains of 3,300 people from the rest of the UK, 21,500 people from overseas (including asylum seekers) and 200 people from the armed forces;
- Over the year 46,100 people (including asylum seekers) came to Scotland from overseas and 24,600 left Scotland to go overseas. The net gain of 21,500 represents about 1 in 250 of the total population. That net increase, and the number of people who came to Scotland from overseas, is the highest since these estimates began in 1991-92.;
- The net gain from the rest of the UK was less than that from overseas. Over the year, 45,000 people came to Scotland from England, Wales and Northern Ireland and 41,700 left Scotland to go in the opposite direction. The net gain of 3,300 is lower than the previous year's 4,100 gain because fewer people came to Scotland and more people left;
- Among Council areas, between mid-2009 and mid-2010, City of Edinburgh had the largest percentage population increase at +1.8 per cent, followed by Aberdeen City (+1.6 per cent), Perth & Kinross (+1.3 per cent) and Stirling (+1.3 per cent). Argyll & Bute had the largest percentage population decrease at -0.9 per cent, followed by Inverclyde (-0.6 per cent) and West Dunbartonshire (-0.4 per cent);
- Among NHS Board areas, Lothian had the largest percentage population increase (+1.3 per cent), followed by Grampian (+1.0 per cent) and Shetland (+0.9 per cent). The only NHS Board areas to have experienced a decline in population were Dumfries & Galloway (-0.2 per cent) and Ayrshire & Arran (-0.1 per cent);
- In the year to mid-2010, all four city council areas gained people as a result of migration. Although they lost population to other parts of Scotland, they gained a larger number of people from overseas. Glasgow City and City of Edinburgh also gained over 1,200 people each through natural change;

- The median age (the age at which half the population is older and half is younger) of the population in Scotland was 41.
The median age was lower in city areas (35 in Glasgow City and 36 in City of Edinburgh) than in rural areas (46 in Argyll & Bute, Dumfries and Galloway and Eilean Siar); and
- On average, there were 67 people per square kilometre in Scotland, ranging from 9 persons per square kilometre in Eilean Siar and Highland Council areas to 3,378 persons per square kilometre in Glasgow City Council area. The average population density for the UK at mid-2009 was 255 people per square kilometre.

1. Background

- 1.1 This paper summarises the Registrar General for Scotland's mid-2010 estimates of the population of Scotland and its administrative areas. Some relevant historical information and a table giving land areas and population densities are also presented.
- 1.2 These population estimates are produced using the demographic cohort component method. The estimates are based on the 2001 Census. Each year the population is 'aged on' one year (that is, the 0 year olds become 1 year olds, and so on), the number of births in the year are added, the number of deaths subtracted and adjustments are made for estimated migration and other changes in special populations. It is important to remember that while the number of births and deaths are considered to be almost complete, there is no comprehensive source of migration data for moves within Scotland, or to and from the rest of the UK and the rest of the world. Estimates of migration are made using the best proxy sources available including General Medical Practitioner (GP) registrations and survey information. Therefore, any error in the population estimates is likely to be due to the migration estimates, particularly the international estimates. The method used to estimate migration is described in [Section 6](#). The methodology behind the population estimates is described in full on this website at:
<http://www.gro-scotland.gov.uk/statistics/theme/population/estimates/mid-year/index.html>.
- 1.3 The Scottish Government has set a target to match average European (EU15) population growth over the period from 2007 to 2017. The population estimates in this publication will be used to measure progress towards this target. More details can be found on the Scotland Performs website at
<http://www.scotland.gov.uk/About/scotPerforms>.
- 1.4 Population estimates are used for a variety of different purposes including resource allocation and planning of services such as education and health. They are also used for calculating rates and performance measures, informing local and national policy, weighting surveys and in modelling of the economy.

2. The Population of Scotland

- 2.1 The estimated population of Scotland on 30 June 2010 was 5,222,100, the highest since 1977 ([Figure 1](#)). This represents an increase of 28,100 on the previous year and of 167,300 compared with mid-2002, when the population hit its lowest level since just after the Second World War. In the twelve months to mid-2010, there was a net migration gain of 25,000 people, consisting of a net gain of 3,300 people from the rest of the UK, a net gain of 21,500 from overseas (including asylum seekers) and a net gain of 200 due to movements between the armed forces and the civilian population. Other changes (including changes in the prison population, and changes in the number of armed forces stationed in Scotland) amounted to a decrease of 2,100 people. There were 58,937 births in 2009-10 (slightly lower than the previous year which was the largest number since 1996-97) and 53,749 deaths (almost 1,000 fewer than the previous year). The number of births in the twelve months up to mid-2010 exceeded the number of deaths by 5,188. This is the largest gain in population due to natural change (births minus deaths) since 1991-92 and compares to a gain of 4,585 in 2008-09.
- 2.2 This is the eighth year in a row that the Scottish population has increased and most of the increase was because more people migrated into Scotland from overseas and the rest of the UK than left.

- 2.3 In 2009-10 around 45,000 people came to Scotland from England, Wales and Northern Ireland, and 41,700 left Scotland to go in the opposite direction. The resulting net gain of 3,300 was less than the previous year's 4,100 net gain because fewer people entered and more people left.
- 2.4 The overseas net gain of 21,500 came from an inflow of 46,100 and an outflow of 24,600. This compares with a net in-migration of 17,500 the previous year. The difference is a result of more people coming to Scotland and slightly fewer leaving: in the previous year, the inflow was 42,700 and the outflow 25,200. Estimating international migration is particularly difficult. The estimate is based primarily on the International Passenger Survey (IPS) which is a sample survey conducted at main airports and ports across the UK. The sample size for Scotland is very small (around 240 contacts in 2009-10). Internationally, a migrant is defined as someone who changes country of usual residence for 12 months or more, so a short-term seasonal migrant worker will not be counted in the migration estimates or in the mid-year population estimates. More details about the migration data sources and definitions used can be found in [Section 6](#).
- 2.5 For comparison purposes it is better to look at a time frame of longer than one year, as population change tends to fluctuate from year to year, particularly for smaller areas. Over the last 10 years, between mid-2000 and mid-2010, Scotland's population increased by 3.1 per cent (+159,160) from 5.06 million ([Table 6](#)). [Figure 2](#) shows that in recent years migration has been the main reason for population change.

Figure 1 Estimated population of Scotland, 1951-2010

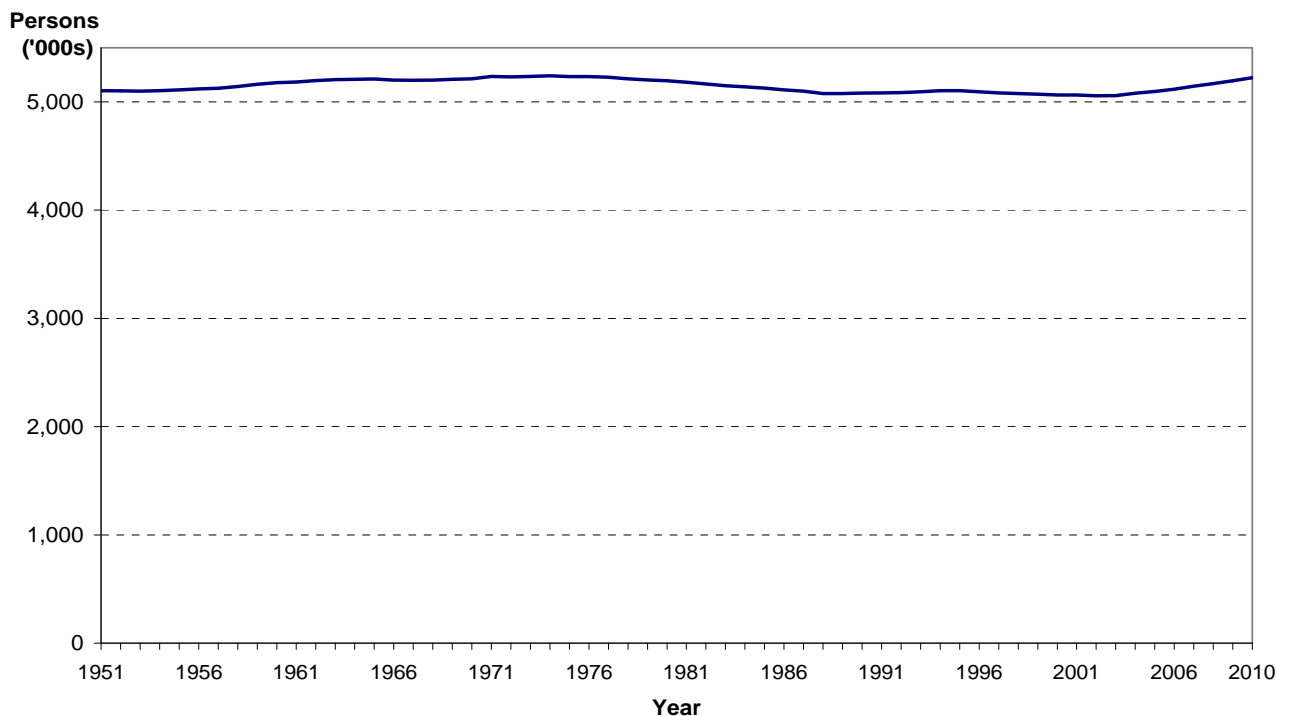
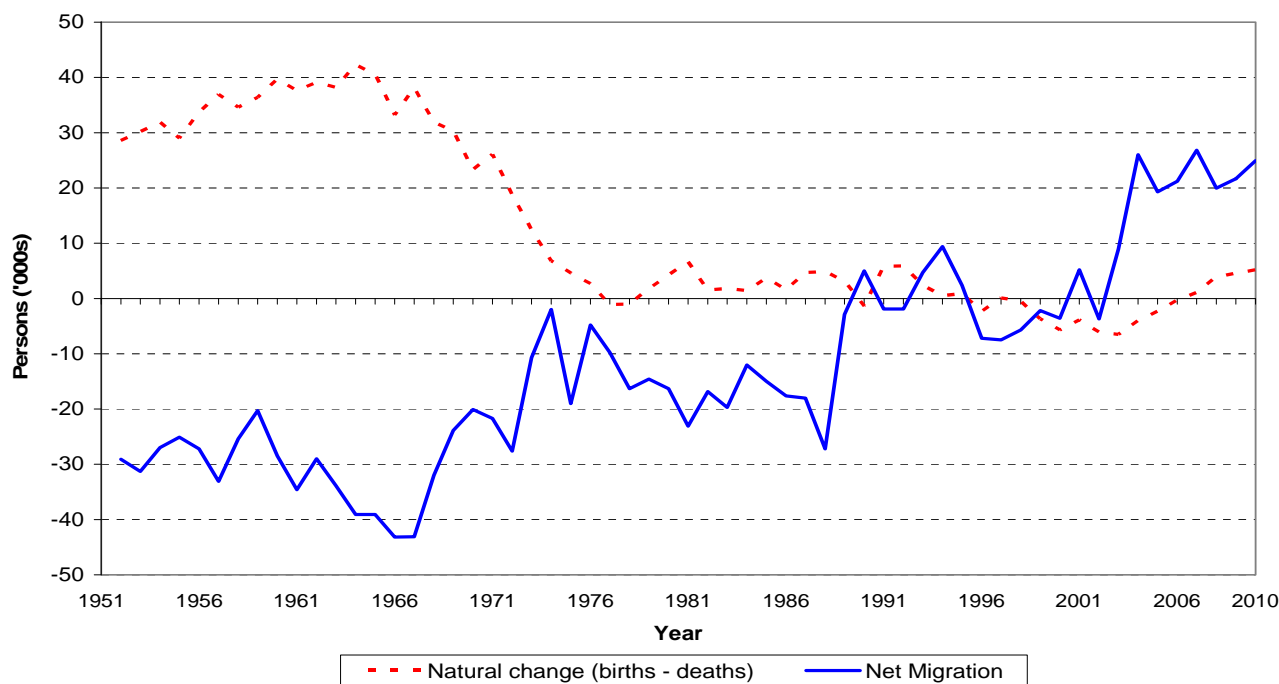


Figure 2 Natural change and net migration, 1951-2010



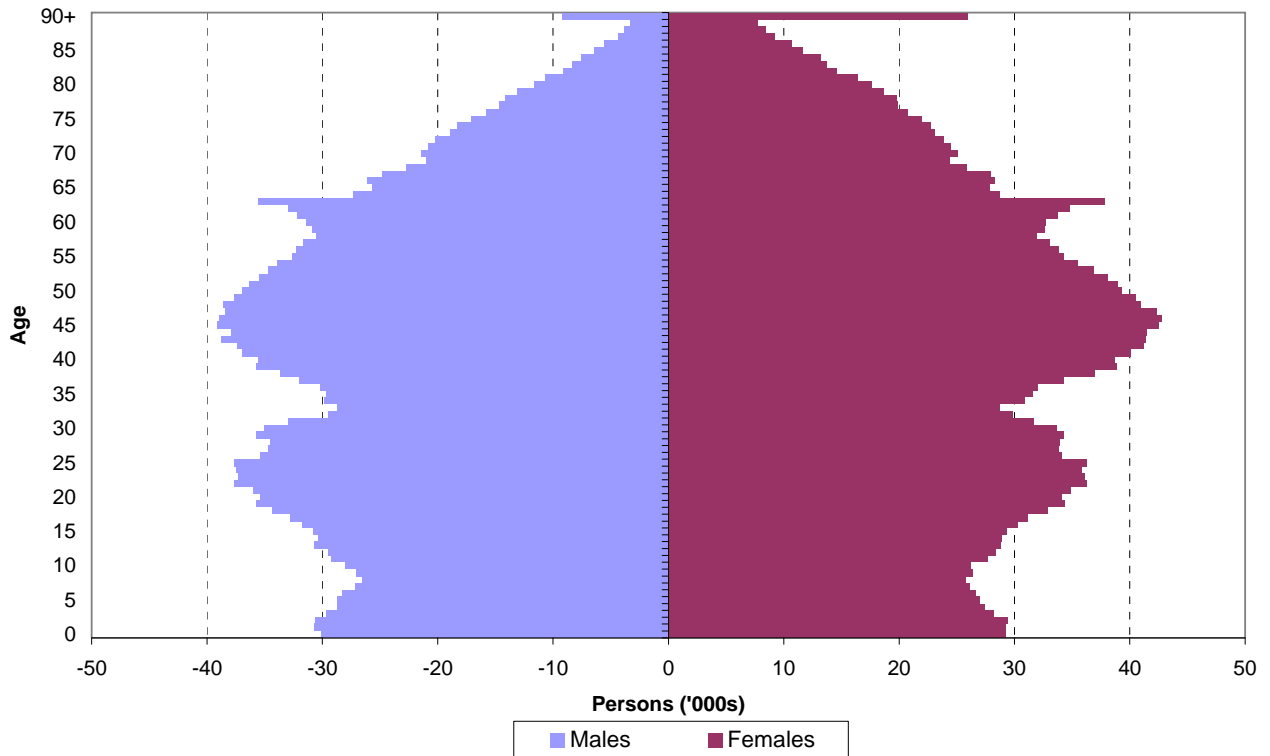
2.6 [Table 8](#) shows movements to and from the UK and overseas between mid-2009 and mid-2010 by age group. The main source of data for the overseas migration calculations is the International Passenger Survey but, because of its small sample size, an age and sex distribution is calculated from General Medical Practitioner (GP) registrations. The method used to estimate international migration is described in [Section 6](#).

2.7 Migrants to Scotland tend to be younger than the general population as [Table 8](#) shows. Of in-migrants to Scotland, 50 per cent from the rest of the UK and 70 per cent of those from overseas were aged 16-34 years, yet in the resident population only 25 per cent were in this age group. Only 5 per cent of people coming to Scotland from the rest of the UK and 1 per cent of people entering from overseas were aged 65 and over. Scotland had a net gain of UK migrants in every age group (except those aged 25-34) and international migrants in every age group to 44.

3. The Age and Sex Structure of the Population

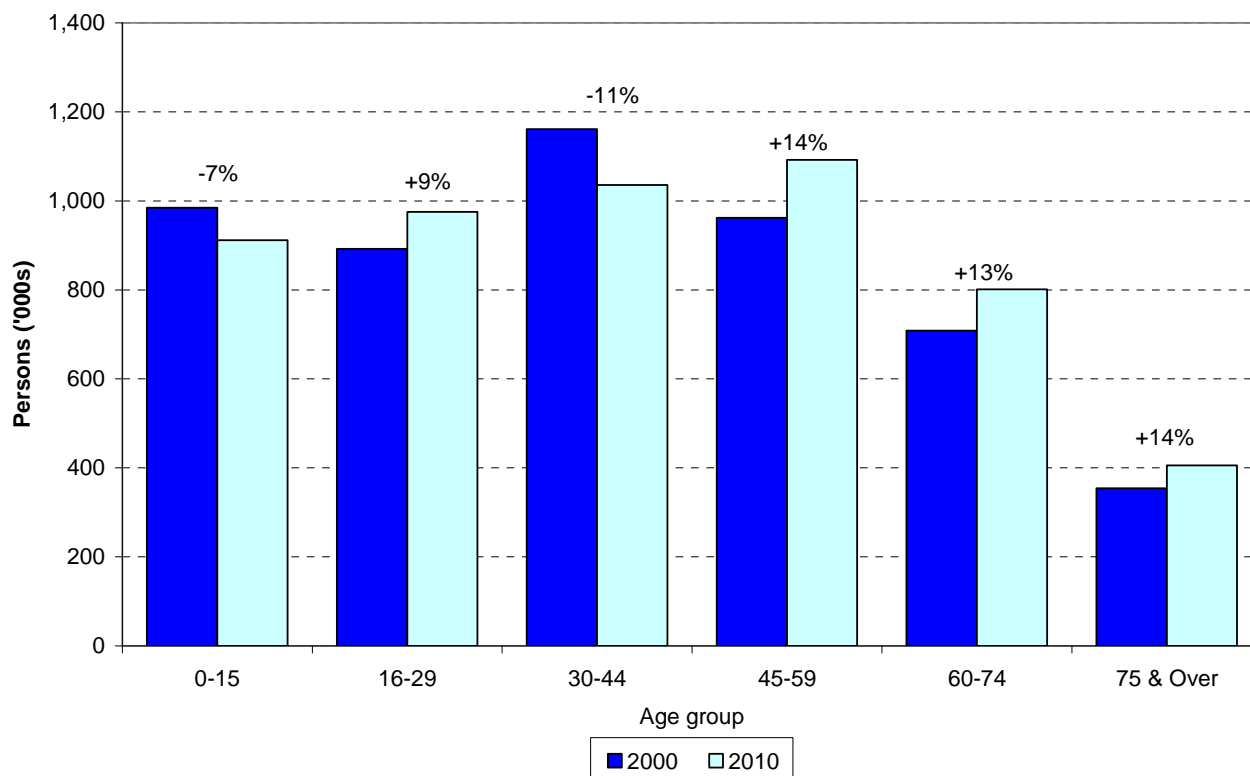
3.1 The age and sex composition is one of the most important aspects of the population. Changes in different age groups will have different social and economic impacts. For example, increases in the elderly population are likely to place a greater demand on health and social services. Scotland's estimated population is shown by age and sex in [Figure 3](#).

Figure 3 Estimated population by age and sex, 30 June 2010



- 3.2 Among older people, particularly over 75, the higher number of females reflects the longer expectation of life for women, partly as a result of higher rates of male mortality during the Second World War. The two baby booms of 1947 and the 1960s can also be seen with a sharp peak at age 63 and another peak between the ages of around 40 and 50. These baby boomers, along with relatively low fertility rates since the 1960s, are the main reasons why Scotland's population is likely to age in the future.
- 3.3 The changing age structure of the population since 2000 is illustrated in [Figure 4](#). The ageing of the population is evident in the rises in the older age groups (+14 per cent in the 45-59 age group, +13 per cent in the 60-74 age group and +14 per cent in the 75 and over age group) and the falls in some of the younger age groups (-7 per cent in the under 16 age group and -11 per cent in the 30-44 age group).

Figure 4 The changing age structure of Scotland's population, 2000-2010



4. Results for Administrative Areas

4.1 Population Change 2009-2010

4.1.1 Population estimates for each Council and NHS Board area, together with details of the components of population change (births, deaths, net migration and other changes) for the period mid-2009 to mid-2010, are shown in [Table 2](#), [Table 3](#) and [Table 4](#).

4.1.2 Among Council areas, City of Edinburgh had the largest percentage population increase at +1.8 per cent followed by Aberdeen City (+1.6 per cent), Perth & Kinross (+1.3 per cent) and Stirling (+1.3 per cent). Six councils experienced a decrease in population although the decreases were mainly very small. These were Argyll & Bute (-0.9 per cent), Inverclyde (-0.6 per cent), West Dunbartonshire (-0.4 per cent), North Ayrshire (-0.2 per cent), Dumfries & Galloway (-0.2 per cent) and East Dunbartonshire (-0.1 per cent).

4.1.3 Of NHS Board areas, Lothian had the largest percentage population increase (+1.3 per cent), followed by Grampian (+1.0 per cent) and Shetland (+0.9 per cent). The only NHS Board areas to have experienced a decline in population were Dumfries & Galloway (-0.2 per cent) and Ayrshire & Arran (-0.1 per cent).

4.2 Components of Migration 2009-2010

4.2.1 For most areas, the main cause of population change in the year to mid-2010 was migration. Table 5 shows, for this period, migration flows to and from each Council and NHS Board area for people moving within Scotland (i.e. between one Council area and another or between one NHS Board area and another), people moving between Scotland and the rest of the UK and people moving between Scotland and overseas.

In [Table 5](#) and in [Figure 5a](#) and [Figure 5b](#), movements to and from the armed forces are included in the rest of UK figures.

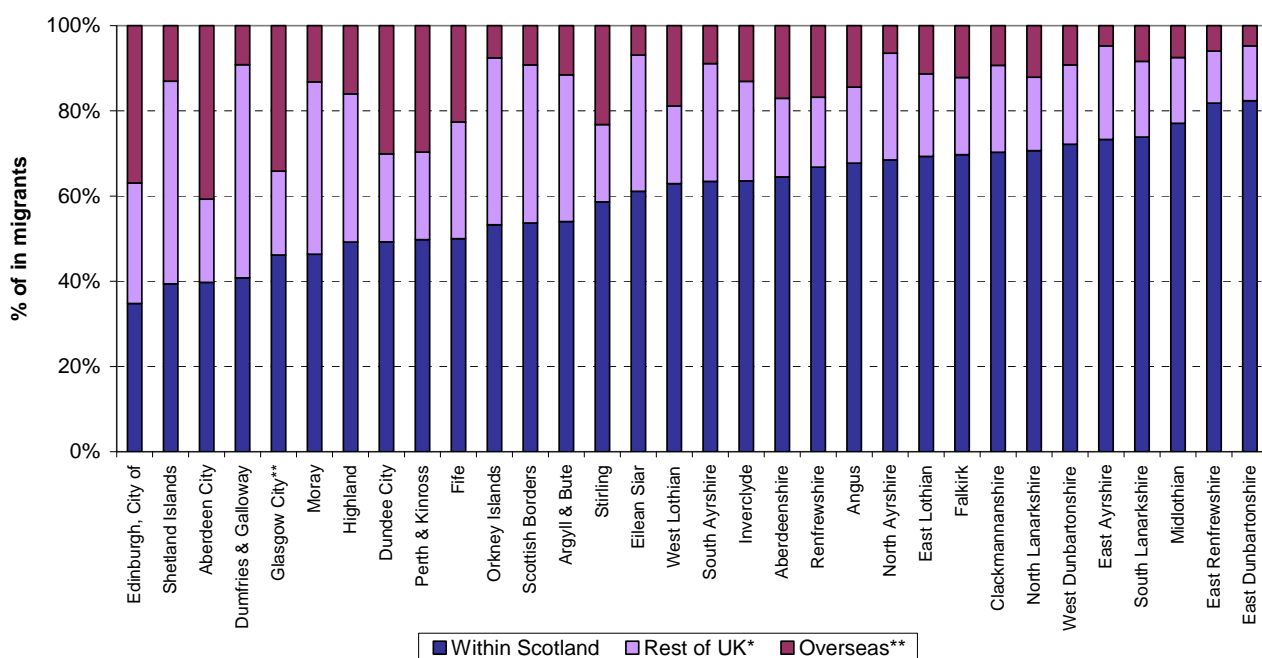
In- and out-migration

- 4.2.2 As [Figure 5a](#) shows, different councils attract migrants from different areas. In some Council areas (such as East Renfrewshire, East Dunbartonshire, Midlothian, West Dunbartonshire, East Ayrshire and South Lanarkshire) most of the migrants came from other Council areas within Scotland. For example, of the 3,066 people estimated to have arrived in East Dunbartonshire, 2,527 (about 82 per cent) were from elsewhere in Scotland, 394 (about 13 per cent) from the rest of the UK and 145 (about 5 per cent) were from overseas.
- 4.2.3 In other areas (such as Dumfries & Galloway and Shetland) more than half of the migrants entering the area came from outside Scotland with most of these coming from the rest of the UK.
- 4.2.4 In most city authorities, City of Edinburgh, Glasgow City and Aberdeen City, the pattern was again for high proportions of migrants to come from outside Scotland but here most migrants came from overseas.
- 4.2.5 As [Figure 5b](#) shows, there are also differences in the destinations of people migrating out of Council areas. Often the region to which most out-migrants moved was the same region from which most in-migrants had arrived. For example most of the migrants leaving East Renfrewshire, East Dunbartonshire, West Dunbartonshire and Midlothian moved elsewhere in Scotland and, as described above, most of the migrants arriving in these Council areas came from elsewhere in Scotland.

Net migration

- 4.2.6 As [Table 5](#) shows, as a result of these different patterns of both in- and out- migration, some councils experienced net gains from one region but net losses to another whilst others experienced gains from all of the regions (within Scotland, the rest of the UK and overseas) .
- 4.2.7 Three Council areas, Inverclyde, North Lanarkshire and West Dunbartonshire, experienced net losses of people to all regions. Angus, East Lothian, Fife, Perth & Kinross, Renfrewshire and Stirling all had net gains of people from all regions.
- 4.2.8 The city authorities lost migrants to other areas of Scotland but tended to gain from the rest of the UK and, in particular, overseas. For example, there was a net gain of over 2,768 migrants in Aberdeen City - comprising a net loss of nearly 1,400 people to the rest of Scotland and net gains of over 300 people from the rest of the UK and nearly 3,900 people from overseas.

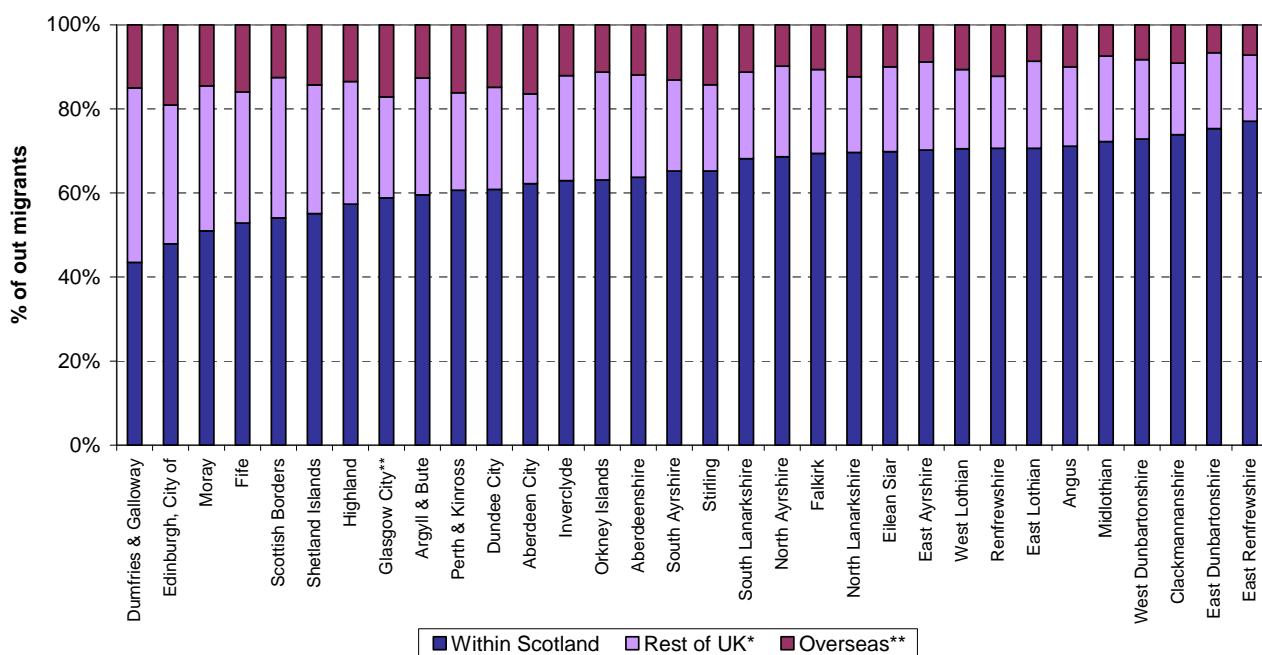
Figure 5a Origin of in-migrants by Council areas, 2009–2010, (ranked by increasing percentage of migrants from within Scotland)



* Includes moves from the armed forces

** Includes asylum seekers

Figure 5b Destination of out-migrants by Council areas, 2009–2010 (ranked by increasing percentage of migrants to within Scotland)



* Includes moves to the armed forces

** Includes asylum seekers returning to their country

4.3 Population Change 2000-2010

- 4.3.1 Details of population changes in administrative areas between 2000 and 2010 are shown in [Table 6](#). These changes are illustrated for Council areas in the map at [Figure 6a](#) and the chart at [Figure 6b](#) which both show the percentage change in the population of Council areas between 2000 and 2010.

Figure 6a Percentage change in population, Council areas, 2000-2010 (Map)

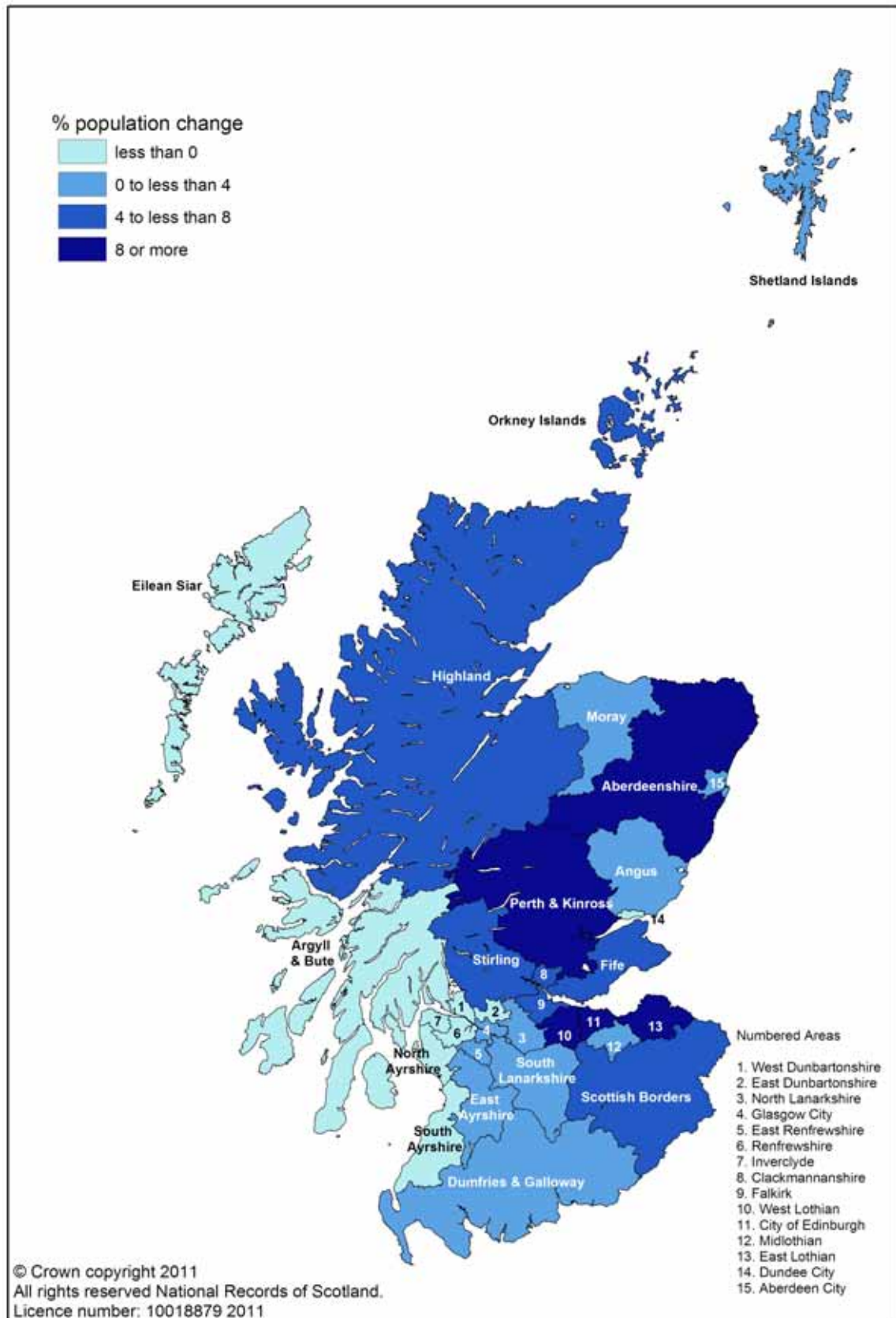
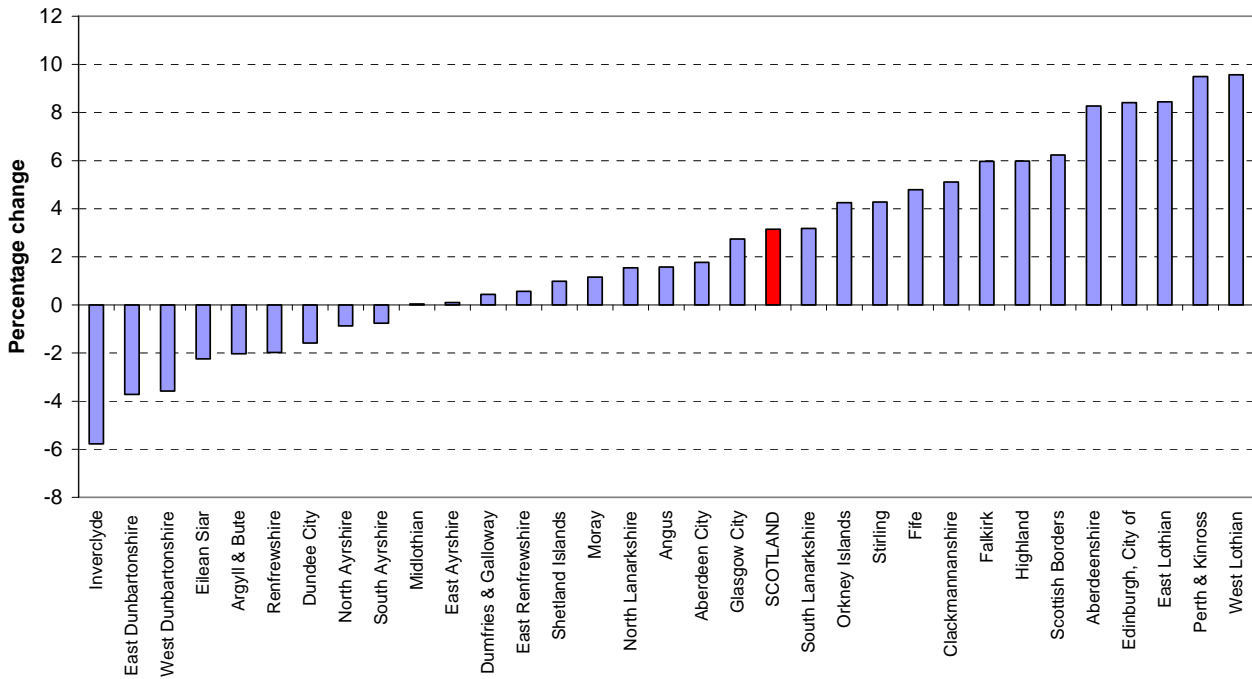


Figure 6b Percentage change in population, Council areas, 2000-2010 (Chart)



- 4.3.2 Between 2000 and 2010, the Council areas with the largest percentage population growth were West Lothian (+9.6 per cent), Perth & Kinross (+9.5 per cent) and East Lothian (+8.4 per cent). The largest absolute increase in numbers was in the City of Edinburgh (+37,690). Inverclyde (-5.8 per cent), East Dunbartonshire (-3.7 per cent) and West Dunbartonshire (-3.6 per cent) showed the greatest percentage decreases during this period. The largest absolute decrease in numbers was in Inverclyde (-4,890).
- 4.3.3 The map at [Figure 7a](#) and the chart at [Figure 7b](#) show the percentage change in population between 2000 and 2010 for each NHS Board area. The largest percentage increases in population were in Lothian (+7.8 per cent), Borders (+6.2 per cent) and Forth Valley (+5.2 per cent). The greatest percentage decreases occurred in the Western Isles (-2.2 per cent) and Ayrshire & Arran (-0.5 per cent).

Figure 7a Percentage change in population, NHS Board areas, 2000-2010 (Map)

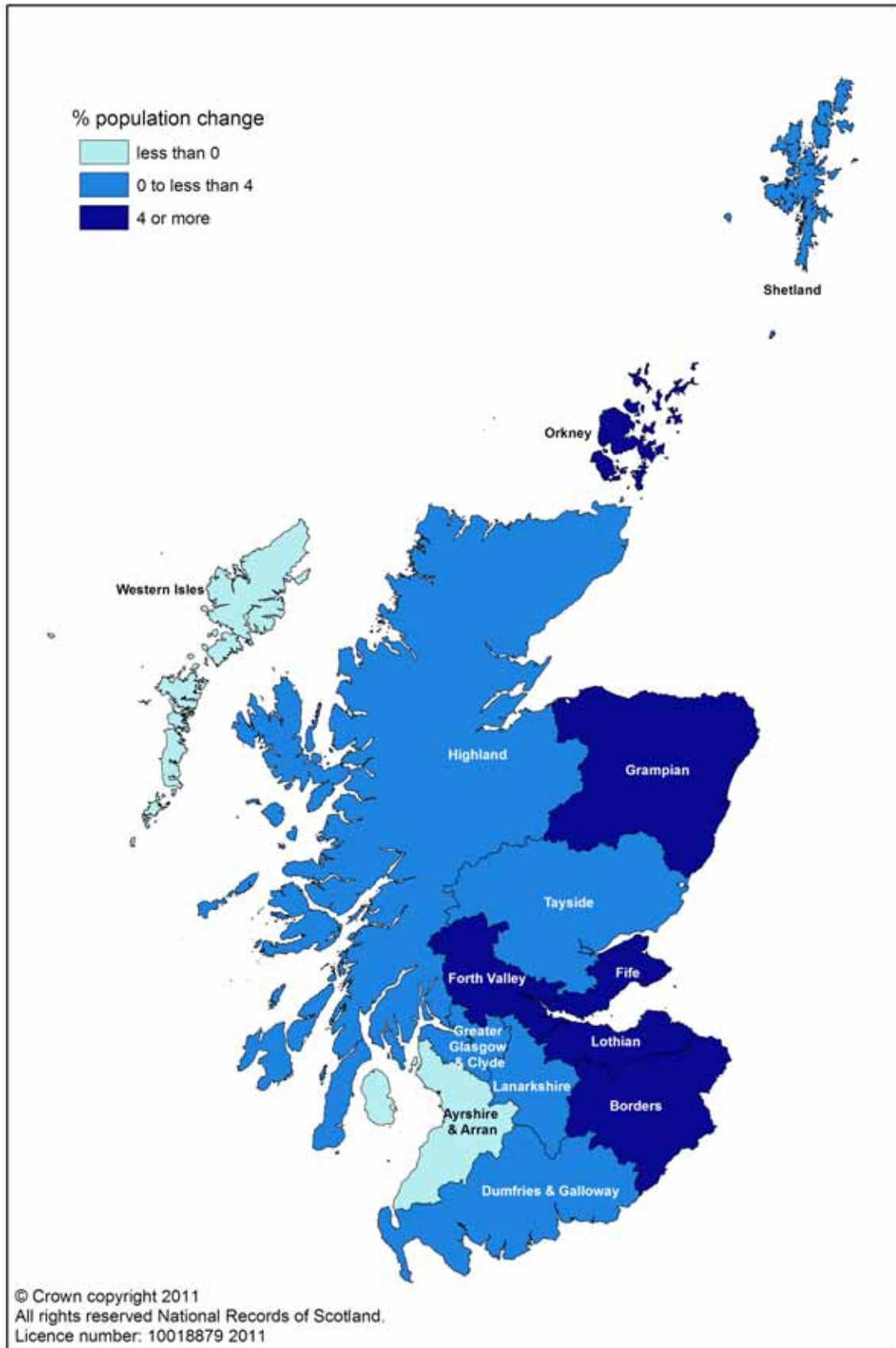
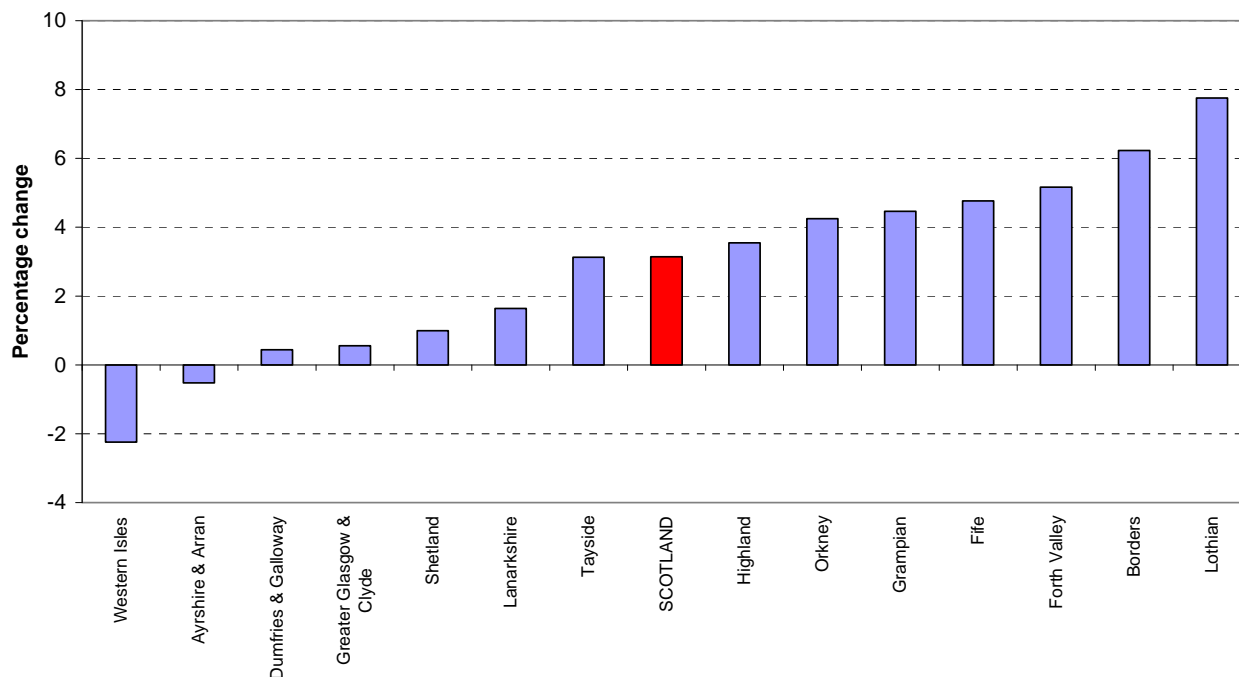


Figure 7b Percentage change in population, NHS Board areas, 2000-2010 (Chart)



4.4 Age and Sex Structure of Administrative Areas in Scotland

- 4.4.1 There were more women than men in Scotland in mid-2010. This is the case for all Council areas other than Moray and Shetland Islands and for all NHS Board areas other than Shetland. [Table 7](#) shows the “sex ratio” for each Council and NHS Board area in Scotland. The sex ratio is the male population divided by the female population (e.g. a sex ratio of 0.95 means that for every 100 females there are 95 males). The sex ratio ranged from 0.90 in North Ayrshire to 1.03 in Shetland Islands. For the NHS Board areas, the sex ratio ranged from 0.92 in Ayrshire & Arran to 1.03 in Shetland.
- 4.4.2 Though the pattern of age distribution is complex, some general themes can be seen from [Table 7](#). Most city council areas had the highest proportions of men and women of working age¹. For example, in City of Edinburgh 72 per cent of men and 65 per cent of women were of working age compared with 67 per cent of men and 59 per cent of women as a whole. The highest proportions of people of pensionable age² tended to be in rural areas such as Dumfries & Galloway (20 per cent of men and 31 per cent of women) and Argyll & Bute (20 per cent of men and 32 per cent of women). In Scotland as a whole, 15 per cent of men and 25 per cent of women were of pensionable age.
- 4.4.3 These patterns can also be seen in [Figure 8](#) and [Figure 9](#) which show the proportion of the population aged under 16, 16-64, and 65 and over for Council and NHS Board areas respectively (ranked by proportion of population aged 65 and over).

¹ 16-64 for men, 16 to approximately 60.14 for women

² 65 and over for men, approximately 60.15 and over for women

Figure 8 Age structure of Council areas, 30 June 2010 (% under 16, 16-64 and 65+), (ranked by percentage aged 65+)

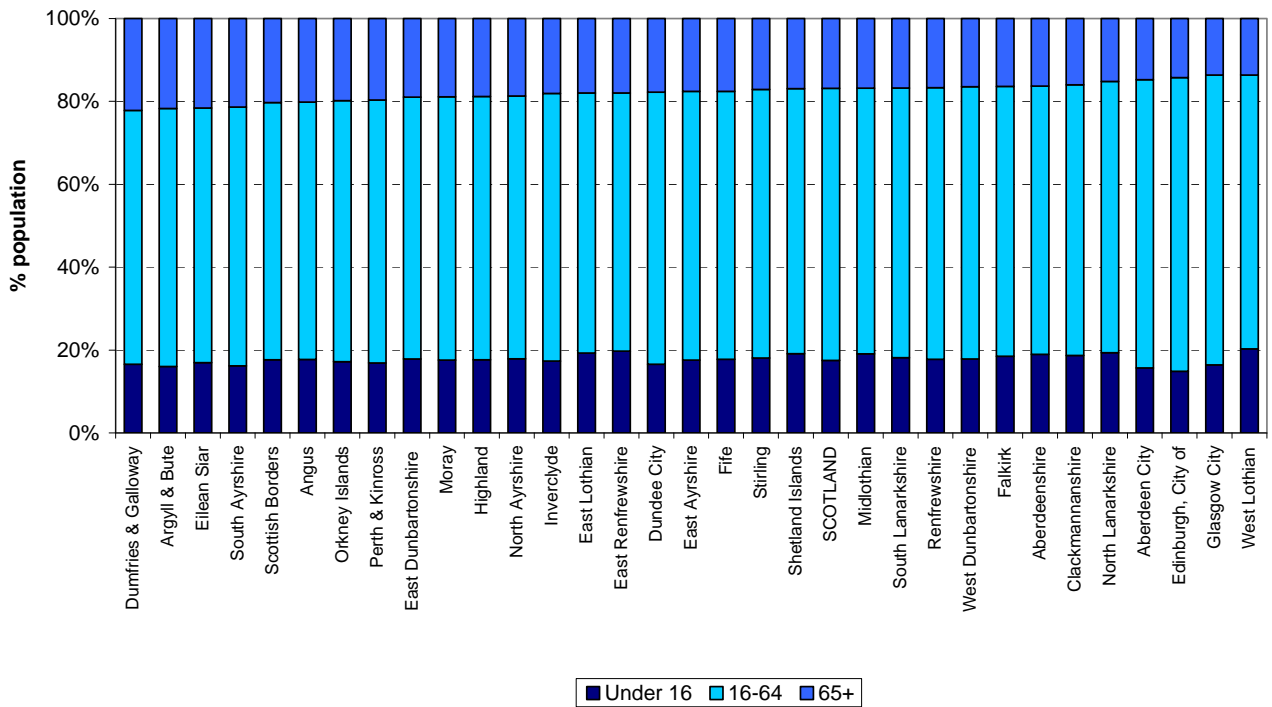
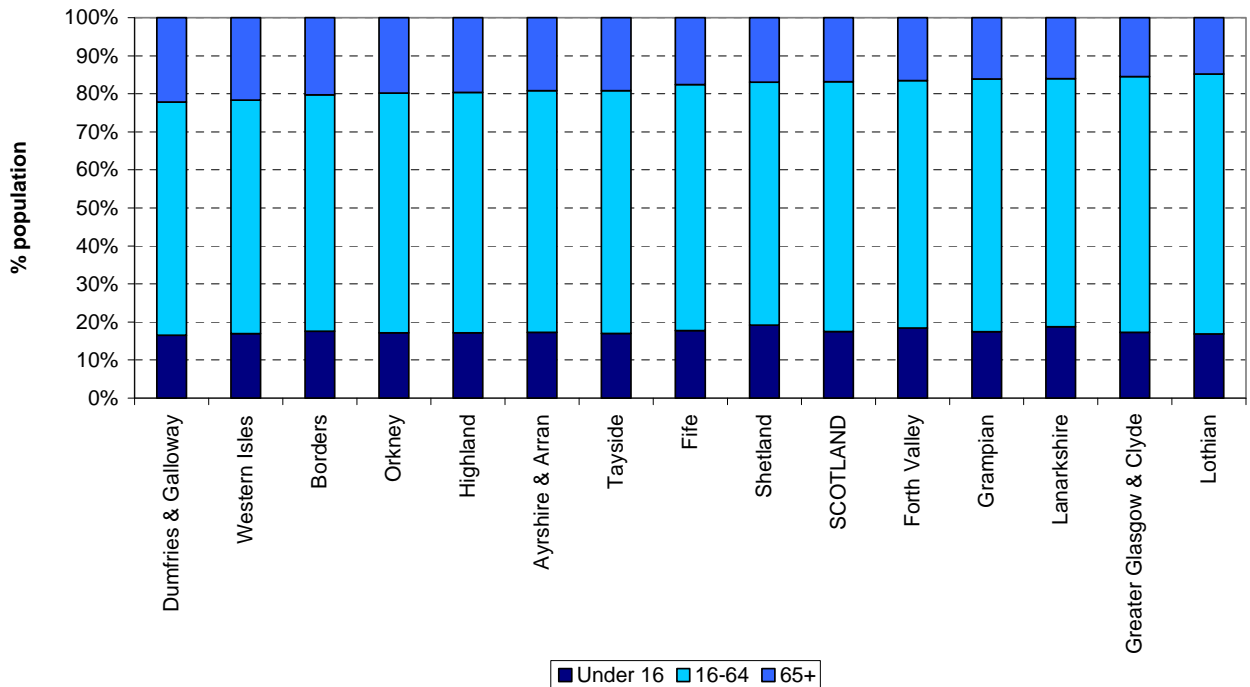


Figure 9 Age structure of NHS Board areas, 30 June 2010 (% under 16, 16-64 and 65+), (ranked by percentage aged 65+)



5. Population Density

- 5.1 Information on land areas and population densities is shown in [Table 9](#). The mid-2010 population density was 67 persons per square kilometre for Scotland and ranged from 9 persons per square kilometre in Eilean Siar and Highland Council areas to 3,378 persons per square kilometre in Glasgow City Council area.

Table 1 Estimated population by age and sex, Scotland: 30 June 2010

Age	Persons	Males	Females	Age	Persons	Males	Females	Age	Persons	Males	Females
All ages	5,222,100	2,530,315	2,691,785								
0	59,395	30,123	29,272	30	68,732	35,053	33,679	60	64,155	31,393	32,762
1	59,974	30,698	29,276	31	64,662	32,937	31,725	61	65,980	32,223	33,757
2	60,038	30,608	29,430	32	59,396	29,552	29,844	62	67,789	33,011	34,778
3	57,908	29,680	28,228	33	57,474	28,709	28,765	63	73,446	35,611	37,835
4	56,205	28,755	27,450	34	60,778	29,838	30,940	64	56,119	27,334	28,785
0 - 4	293,520	149,864	143,656	30 - 34	311,042	156,089	154,953	60 - 64	327,489	159,572	167,917
5	55,763	28,722	27,041	35	61,287	29,654	31,633	65	53,635	25,736	27,899
6	54,966	28,268	26,698	36	62,171	30,153	32,018	66	54,442	26,158	28,284
7	53,366	27,218	26,148	37	66,331	32,026	34,305	67	52,776	24,829	27,947
8	52,426	26,603	25,823	38	70,619	33,621	36,998	68	48,565	22,704	25,861
9	53,537	27,101	26,436	39	74,650	35,761	38,889	69	45,353	20,964	24,389
5 - 9	270,058	137,912	132,146	35 - 39	335,058	161,215	173,843	65 - 69	254,771	120,391	134,380
10	54,252	28,046	26,206	40	74,300	35,557	38,743	70	46,506	21,432	25,074
11	56,973	29,281	27,692	41	77,077	36,972	40,105	71	45,268	20,817	24,451
12	57,931	29,520	28,411	42	78,657	37,423	41,234	72	44,133	20,230	23,903
13	59,618	30,749	28,869	43	80,207	38,767	41,440	73	42,074	18,946	23,128
14	59,269	30,396	28,873	44	79,453	37,942	41,511	74	41,105	18,297	22,808
10 - 14	288,043	147,992	140,051	40 - 44	389,694	186,661	203,033	70 - 74	219,086	99,722	119,364
15	60,173	30,824	29,349	45	81,673	39,139	42,534	75	39,143	17,140	22,003
16	62,051	31,727	30,324	46	81,697	38,947	42,750	76	36,528	15,788	20,740
17	63,994	32,808	31,186	47	80,840	38,465	42,375	77	34,598	14,662	19,936
18	67,272	34,407	32,865	48	79,575	38,625	40,950	78	33,979	14,164	19,815
19	70,161	35,782	34,379	49	78,164	37,674	40,490	79	31,847	13,119	18,728
15 - 19	323,651	165,548	158,103	45 - 49	401,949	192,850	209,099	75 - 79	176,095	74,873	101,222
20	69,514	35,378	34,136	50	76,292	36,962	39,330	80	29,317	11,659	17,658
21	70,931	36,005	34,926	51	75,363	36,368	38,995	81	27,073	10,660	16,413
22	74,002	37,683	36,319	52	73,581	35,454	38,127	82	23,720	9,096	14,624
23	73,453	37,309	36,144	53	71,578	34,676	36,902	83	22,051	8,327	13,724
24	73,384	37,494	35,890	54	69,429	33,930	35,499	84	20,775	7,540	13,235
20 - 24	361,284	183,869	177,415	50 - 54	366,243	177,390	188,853	80 - 84	122,936	47,282	75,654
25	73,960	37,677	36,283	55	66,947	32,614	34,333	85	18,120	6,472	11,648
26	69,565	35,422	34,143	56	66,127	32,310	33,817	86	16,273	5,603	10,670
27	68,564	34,698	33,866	57	64,816	31,695	33,121	87	13,589	4,349	9,240
28	68,445	34,542	33,903	58	62,512	30,538	31,974	88	12,330	3,891	8,439
29	70,088	35,760	34,328	59	63,553	30,925	32,628	89	11,105	3,357	7,748
25 - 29	350,622	178,099	172,523	55 - 59	323,955	158,082	165,873	85 - 89	71,417	23,672	47,745
								90 & over	35,187	9,232	25,955

Age group summaries

	Count			Percentage of all ages		
	Persons	Males	Females	Persons	Males	Females
All aged under 16	911,794	466,592	445,202	17	18	17
All aged under 18	1,037,839	531,127	506,712	20	21	19
All aged 16 & over	4,310,306	2,063,723	2,246,583	83	82	83
All aged 18 & over	4,184,261	1,999,188	2,185,073	80	79	81
Working age	3,267,923	1,688,551	1,579,372	63	67	59
Pension age ¹	1,042,383	375,172	667,211	20	15	25
All aged 75 & over	405,635	155,059	250,576	8	6	9

¹ Pensionable age at 30 June 2010 was 65 for men and approximately 60.15 for women.

Table 2 Estimated population by sex, single year of age and administrative area: 30 June 2010

PERSONS Area	All Ages	Age																															
		0	1	2	3	4	5	6	7	8	9	10	11	12	13	14	15	16	17	18	19	20	21	22	23	24	25	26	27	28	29	30	
SCOTLAND	5,222,100	59,395	59,974	60,038	57,908	56,205	55,763	54,966	53,366	52,426	53,537	54,252	56,973	57,931	59,618	59,269	60,173	62,051	63,994	67,272	70,161	69,514	70,931	74,002	73,453	73,384	73,960	69,565	68,564	68,445	70,088	68,732	
Council areas																																	
Aberdeen City	217,120	2,602	2,521	2,455	2,327	2,154	2,106	1,949	1,997	1,933	1,962	1,939	2,006	1,943	2,053	1,982	2,107	2,181	2,302	2,684	3,492	3,722	3,841	4,084	4,077	4,211	4,106	3,867	4,074	4,072	3,860	4,054	
Aberdeenshire	245,780	2,918	2,972	2,928	2,902	2,917	2,866	2,799	2,721	2,721	2,729	2,942	3,039	2,995	3,057	3,036	3,050	3,209	3,125	2,897	2,788	2,618	2,632	2,614	2,658	2,538	2,540	2,411	2,241	2,299	2,508	2,410	
Angus	110,570	1,200	1,177	1,216	1,236	1,161	1,196	1,200	1,198	1,138	1,189	1,205	1,225	1,274	1,356	1,303	1,331	1,365	1,344	1,360	1,285	1,157	1,150	1,126	1,165	1,153	1,159	1,043	999	989	992	993	
Argyll & Bute	89,200	795	823	788	799	768	799	872	795	869	830	877	1,050	987	1,094	1,100	1,069	1,135	1,087	1,057	1,009	1,035	1,054	909	919	983	924	865	829	694	764	778	
Clackmannanshire	50,630	618	603	673	581	598	572	547	512	567	568	558	580	599	619	642	634	632	708	660	625	568	609	665	687	621	568	584	525	549	588	562	
Dumfries & Galloway	148,190	1,519	1,470	1,515	1,563	1,511	1,486	1,425	1,428	1,336	1,423	1,412	1,539	1,727	1,625	1,776	1,786	1,876	1,736	1,671	1,635	1,528	1,502	1,554	1,551	1,471	1,441	1,327	1,175	1,245	1,297	1,293	
Dundee City	144,290	1,732	1,759	1,730	1,537	1,432	1,568	1,459	1,414	1,355	1,330	1,290	1,327	1,453	1,552	1,511	1,440	1,482	1,916	2,204	2,694	2,575	2,671	2,837	2,814	2,739	2,743	2,247	2,126	2,162	2,374	2,319	
East Ayrshire	120,240	1,352	1,396	1,337	1,324	1,310	1,263	1,321	1,265	1,205	1,279	1,273	1,263	1,347	1,365	1,362	1,472	1,542	1,633	1,578	1,589	1,527	1,579	1,536	1,550	1,541	1,457	1,283	1,260	1,319	1,263	1,278	
East Dunbartonshire	104,580	937	990	1,049	1,015	1,090	1,090	1,117	1,149	1,121	1,165	1,182	1,298	1,409	1,311	1,393	1,358	1,432	1,406	1,407	1,356	1,306	1,298	1,204	1,200	1,210	1,280	1,070	1,075	967	968	922	
East Lothian	97,500	1,096	1,134	1,265	1,188	1,223	1,166	1,177	1,017	1,093	1,056	1,172	1,190	1,231	1,316	1,226	1,213	1,279	1,306	1,315	1,253	1,152	1,196	1,055	1,140	1,047	1,020	802	881	882	791	800	
East Renfrewshire	89,540	903	910	978	988	1,041	1,102	1,103	1,093	1,079	1,118	1,148	1,205	1,253	1,256	1,205	1,297	1,311	1,241	1,183	1,107	1,092	1,164	1,064	1,000	989	962	947	779	759	778	782	
Edinburgh, City of	486,120	5,392	5,515	5,362	4,807	4,498	4,256	4,283	4,167	4,081	4,030	4,113	4,294	4,334	4,220	4,475	4,498	4,577	5,261	6,386	7,311	7,865	8,440	9,199	9,370	9,561	10,276	10,093	10,365	10,708	10,525	10,221	
Eilean Siar	26,190	221	263	254	289	249	242	284	274	256	256	287	314	284	320	329	318	326	312	296	235	247	226	239	210	216	238	203	188	202	228	258	
Falkirk	153,280	1,945	1,911	1,934	1,831	1,753	1,773	1,676	1,706	1,569	1,683	1,665	1,747	1,801	1,820	1,694	1,828	1,827	2,026	1,998	2,132	1,990	1,734	1,889	1,725	1,693	1,813	1,585	1,676	1,911	1,920	1,934	
Fife	365,020	4,237	4,268	4,325	4,092	4,053	3,962	3,933	3,784	3,693	3,940	3,782	4,088	4,027	4,133	4,166	4,360	4,438	4,469	4,706	5,389	5,438	5,477	5,552	5,084	4,824	4,502	4,190	4,008	4,013	4,181	4,261	
Glasgow City	592,820	7,544	7,188	6,968	6,551	6,278	6,104	5,865	5,619	5,418	5,458	5,450	5,472	5,647	5,878	5,748	6,048	6,139	6,749	7,881	8,771	9,287	10,099	10,956	11,313	11,630	12,054	11,583	12,216	11,651	11,840	11,581	
Highland	221,630	2,399	2,510	2,473	2,393	2,364	2,338	2,326	2,274	2,250	2,393	2,286	2,542	2,615	2,610	2,657	2,641	2,674	2,618	2,519	2,329	2,169	2,182	2,234	2,303	2,290	2,385	2,242	2,061	2,144	2,518	2,401	
Inverclyde	79,770	814	816	874	862	822	893	856	822	755	814	835	894	893	970	963	953	966	936	1,056	1,036	1,042	989	1,085	1,031	1,110	1,073	957	933	850	922	956	
Midlothian	81,140	1,007	971	986	969	993	920	906	909	831	952	965	1,033	1,002	1,025	976	1,007	1,037	995	1,158	1,095	978	957	1,078	998	999	912	857	850	859	801	819	
Moray	87,720	968	999	1,045	970	897	891	841	838	773	906	912	971	1,071	1,062	1,143	1,148	1,162	1,166	1,167	1,042	973	1,093	1,018	1,039	943	1,000	937	833	782	762	818	
North Ayrshire	135,180	1,441	1,493	1,528	1,502	1,505	1,460	1,461	1,493	1,422	1,444	1,438	1,430	1,563	1,644	1,652	1,725	1,784	1,714	1,697	1,826	1,649	1,670	1,743	1,639	1,564	1,542	1,364	1,377	1,413	1,443	1,334	
North Lanarkshire	326,360	4,010	4,149	4,128	4,089	3,851	3,943	3,927	3,771	3,776	3,704	3,693	4,022	3,974	4,180	4,050	3,904	4,102	4,005	4,305	4,264	4,112	4,176	4,192	4,223	4,273	4,430	4,184	4,178	4,171	4,199	4,254	
Orkney Islands	20,110	208	215	208	207	216	199	190	193	204	168	203	235	208	265	256	273	281	227	226	211	231	185	194	183	196	206	177	174	173	204	200	
Perth & Kinross	147,780	1,465	1,516	1,516	1,474	1,384	1,487	1,456	1,476	1,440	1,586	1,560	1,611	1,731	1,778	1,684	1,734	1,825	1,843	1,754	1,703	1,536	1,785	1,937	2,087	2,216	2,054	2,004	1,754	1,761	1,679	1,500	
Renfrewshire	170,250	1,957	1,861	1,965	1,896	1,909	1,906	1,859	1,769	1,773	1,851	1,803	1,861	1,891	2,007	1,966	2,000	2,061	2,105	2,137	2,182	2,167	2,100	2,307	2,324	2,226	2,204	2,157	2,016	2,303	2,116		
Scottish Borders	112,870	1,182	1,202	1,229	1,216	1,178	1,231	1,213	1,218	1,220	1,178	1,266	1,234	1,247	1,326	1,370	1,370	1,326	1,393	1,275	1,287	1,190	1,120	1,181	1,023	1,048	999	979	900	856	993	949	
Shetland Islands	22,400	279	279	234	264	275	242	244	270	239	251	298	251	287	295	280	298	289	305	285	240	244	221	224	241	233	261	207	208	215	249	248	
South Ayrshire	111,440	1,036	1,094	1,109	1,108	1,059	1,110	1,086	1,018	1,094	1,099	1,095	1,202	1,235	1,242	1,235	1,235	1,343	1,323	1,334	1,284	1,375	1,281	1,202	1,312	1,290	1,257	1,231	992	1,062	1,151	998	
South Lanarkshire	311,880	3,520	3,609	3,637	3,563	3,542	3,466	3,419	3,264	3,327	3,287	3,544	3,645	3,575	3,825	3,671	3,699	4,000	3,906	4,010	3,948	3,795	3,613	3,930	3,781	3,876	3,999	3,836	3,649	3,616	3,807	3,803	
Stirling	89,850	906	917	891	983	952	957	1,018	988	897	1,013	1,015	1,155	1,145	1,177	1,113	1,116	1,123	1,350	1,691	1,729	1,667	1,532	1,704	1,295	1,122	1,073	1,053	896	872	878	797	
West Dunbartonshire	90,570	1,051	1,091	1,129	1,080	1,012	987	963	925	920	884	979	963	998	1,065	1,059	1,068	1,092	1,177	1,188	1,187	1,215	1,189	1,254	1,210	1,293	1,356	1,284	1,175	1,161	1,207	1,026	
West Lothian	172,080	2,141	2,352	2,309	2,302	2,210	2,182	2,191	1,999	2,071	1,991	2,065	2,287	2,185	2,172	2,246	2,193	2,235	2,310	2,187	2,127	2,064	2,166	2,138	2,301	2,278	2,126	1,996	1,992	2,072	2,095	2,067	
NHS Board areas																																	
Ayrshire & Arran	366,860	3,829	3,983	3,974	3,934	3,874	3,833	3,868	3,776	3,721	3,822	3,806	3,895	4,145	4,251	4,249	4,432	4,669	4,670	4,609	4,699	4,551	4,530	4,581	4,501	4,395	4,256	3,878	3,629	3,794	3,857	3,610	
Borders	112,870	1,182	1,202	1,229	1,216	1,178	1,231	1,213	1,218	1,220	1,178	1,266	1,234	1,247	1,326	1,370	1,370	1,326	1,393	1,275	1,287	1,190	1,120	1,181	1,023	1,048	999	979	900	856	993	949	
Dumfries & Galloway	148,190	1,519	1,470	1,515	1,563	1,511	1,486	1,425	1,428	1,336	1,423	1,412	1,539	1,72																			

Table 2 (continued)

FEMALES

Area	All Ages	Age																															
		0	1	2	3	4	5	6	7	8	9	10	11	12	13	14	15	16	17	18	19	20	21	22	23	24	25	26	27	28	29	30	
SCOTLAND	2,691,785	29,272	29,276	29,430	28,228	27,450	27,041	26,698	26,148	25,823	26,436	26,206	27,692	28,411	28,869	28,873	29,349	30,324	31,186	32,865	34,379	34,136	34,926	36,319	36,144	35,890	36,283	34,143	33,866	33,903	34,328	33,679	
Council areas																																	
Aberdeen City	109,620	1,268	1,210	1,196	1,166	1,072	1,080	956	964	974	960	899	957	923	956	925	1,017	1,062	1,108	1,366	1,992	2,088	2,102	2,234	2,161	2,193	2,033	1,846	1,966	1,889	1,639	1,718	
Aberdeenshire	123,749	1,446	1,474	1,391	1,394	1,401	1,392	1,336	1,326	1,349	1,325	1,357	1,501	1,427	1,442	1,479	1,496	1,571	1,502	1,450	1,285	1,217	1,201	1,247	1,221	1,197	1,215	1,154	1,085	1,125	1,245	1,207	
Angus	57,009	622	602	618	592	564	586	579	595	561	584	579	573	616	660	649	674	637	664	665	525	529	564	544	580	523	532	465	509	494	485	511	
Argyll & Bute	45,030	414	408	386	371	380	375	425	378	441	418	426	537	465	516	555	483	550	549	492	438	476	443	380	410	394	435	348	378	295	313	322	
Clackmannanshire	25,901	323	289	334	286	294	270	259	249	257	291	277	263	302	298	325	304	322	355	321	326	258	269	328	319	282	249	245	244	274	282	279	
Dumfries & Galloway	76,471	737	757	762	735	750	717	691	712	646	665	683	731	874	822	839	884	906	881	802	785	690	710	718	751	701	680	688	582	673	623	695	
Dundee City	75,533	843	825	869	768	703	737	705	675	668	654	655	659	701	754	726	683	705	980	1,212	1,483	1,404	1,392	1,500	1,419	1,361	1,318	1,086	970	1,062	1,147	1,061	
East Ayrshire	62,065	652	685	619	632	640	605	639	627	629	624	644	635	609	633	664	680	767	794	776	809	726	736	711	778	782	741	628	610	675	661	680	
East Dunbartonshire	54,144	444	477	504	511	532	515	517	548	550	577	551	636	643	650	661	658	675	653	707	606	572	577	550	545	570	602	512	520	426	437	424	
East Lothian	50,748	538	556	616	590	572	548	607	492	530	544	579	577	630	663	596	599	625	657	638	643	551	630	477	520	508	496	409	434	488	393	411	
East Renfrewshire	46,699	450	430	471	480	527	557	539	541	518	533	547	560	592	644	586	610	658	630	536	519	494	524	503	435	476	444	409	378	374	362	348	
Edinburgh, City of	250,871	2,712	2,729	2,636	2,364	2,150	2,042	2,057	1,981	1,956	1,979	2,004	2,126	2,150	1,925	2,173	2,156	2,237	2,510	3,216	3,720	4,165	4,328	4,758	4,849	5,302	5,249	5,333	5,406	5,343	5,015		
Eilean Siar	13,308	99	121	114	139	124	120	153	137	129	135	126	152	147	160	170	166	170	144	124	100	96	100	110	73	101	100	106	77	104	128	131	
Falkirk	78,904	987	967	995	881	871	860	814	829	739	846	779	869	875	856	826	918	877	922	892	960	894	846	959	823	838	957	817	912	951	965	954	
Fife	188,837	2,013	2,079	2,093	2,015	2,027	1,951	1,894	1,827	1,827	1,945	1,775	1,950	2,093	1,999	2,021	2,164	2,229	2,229	2,277	2,678	2,754	2,850	2,793	2,580	2,286	2,108	2,044	2,015	1,916	2,141	2,153	
Glasgow City	305,515	3,816	3,527	3,446	3,256	3,023	2,945	2,827	2,806	2,682	2,693	2,635	2,669	2,777	2,878	2,777	2,925	2,915	3,303	3,938	4,462	4,635	5,070	5,429	5,572	5,717	6,018	5,767	5,996	5,756	5,692	5,572	
Highland	112,895	1,163	1,171	1,198	1,169	1,136	1,125	1,146	1,121	1,100	1,148	1,090	1,170	1,261	1,246	1,322	1,288	1,309	1,292	1,172	1,033	973	1,003	1,025	1,057	1,065	1,126	1,033	1,045	1,099	1,248	1,207	
Inverclyde	41,662	393	374	395	408	407	420	418	397	366	393	397	445	413	473	482	477	511	439	498	476	522	453	524	495	525	540	459	456	443	434	488	
Midlothian	42,590	478	448	514	462	488	443	431	431	399	486	504	538	477	525	469	490	515	481	564	538	480	443	541	483	515	448	434	414	457	446	439	
Moray	43,569	472	461	505	462	405	461	415	397	348	441	415	463	507	526	544	540	515	562	574	548	415	413	463	434	477	410	437	433	392	366	326	336
North Ayrshire	71,091	719	724	752	730	721	708	726	714	707	737	705	723	796	808	817	837	881	799	822	873	783	804	841	764	782	784	727	693	726	729	712	
North Lanarkshire	169,314	1,990	2,054	1,987	1,975	1,853	1,896	1,918	1,858	1,858	1,838	1,812	1,923	1,983	2,056	1,972	1,891	1,960	1,937	2,053	2,049	1,983	2,091	1,989	2,107	2,147	2,232	2,078	2,045	2,040	2,139	2,138	
Orkney Islands	10,202	102	94	107	95	116	104	88	99	113	84	104	98	92	117	114	149	156	130	107	88	111	73	94	92	98	94	89	79	87	102	100	
Perth & Kinross	75,262	728	740	709	735	701	709	696	714	693	824	739	779	822	881	860	874	887	906	763	755	676	812	886	941	1,045	972	916	768	781	749	711	
Renfrewshire	88,649	950	877	988	923	923	952	941	864	897	922	908	910	923	914	984	962	999	1,004	1,098	1,058	1,036	1,056	1,122	1,124	1,126	1,048	1,056	1,089	1,005	1,088	1,090	
Scottish Borders	58,236	601	599	632	614	551	592	583	595	618	570	638	586	642	624	673	672	662	701	621	656	592	532	576	520	509	486	495	464	461	483	453	
Shetland Islands	11,052	114	139	107	125	152	94	112	130	111	133	139	137	143	149	143	149	141	143	114	113	111	99	109	102	105	108	104	94	94	117	119	
South Ayrshire	57,944	515	526	535	543	538	567	540	507	516	527	488	597	612	622	608	610	693	636	668	591	648	589	622	652	615	601	613	457	533	585	487	
South Lanarkshire	162,471	1,718	1,828	1,787	1,711	1,779	1,697	1,654	1,666	1,652	1,647	1,744	1,820	1,762	1,867	1,766	1,837	1,995	1,914	1,930	1,873	1,788	1,770	1,856	1,810	1,892	1,924	1,910	1,808	1,779	1,928	1,887	
Stirling	46,939	426	450	440	469	469	459	483	483	432	509	504	538	547	590	542	570	544	689	899	921	839	789	851	660	513	545	474	428	462	431	479	
West Dunbartonshire	47,497	504	529	575	518	493	463	464	462	483	432	507	470	493	501	495	533	502	576	538	578	598	581	603	546	650	677	618	575	606	606	537	
West Lothian	88,008	1,035	1,126	1,149	1,109	1,088	1,051	1,085	1,023	1,074	972	996	1,100	1,114	1,114	1,110	1,052	1,101	1,084	1,058	1,031	1,034	1,026	1,005	1,148	1,115	1,031	931	1,050	1,056	1,061	1,015	
NHS Board areas																																	
Ayrshire & Arran	191,100	1,886	1,935	1,906	1,905	1,899	1,880	1,905	1,848	1,852	1,888	1,837	1,955	2,017	2,063	2,089	2,127	2,341	2,229	2,266	2,273	2,157	2,129	2,174	2,194	2,179	2,126	1,968	1,760	1,934	1,975	1,879	
Borders	58,236	601	599	632	614	551	592	583	595	618	570	638	586	642	624	673	672	662	701	621	656	592	532	576	520	509	486	495	464	461	483	453	
Dumfries & Galloway	76,471	737	757	762	735	750	717	691	712	646	665	683	731	874	822	839	884	906	881	802	785	690	710	718	751	701	680	688	582	673	623	695	
Fife	188,797	2,013	2,079	2,093	2,015	2,027	1,951	1,894	1,827	1,828	1,944	1,774	1,950	2,093	1,997	2,020	2,164	2,228	2,229	2,277	2,678	2,753	2,849	2,793	2,581	2,286	2,105	2,043	2,017	1,916	2,141	2,152	
Forth Valley	151,559	1,735	1,705	1,766	1,636	1,632	1,588	1,553	1,558	1,429	1,646	1,560	1,671	1,721	1,739	1,693	1,790	1,741	1,964	2,110	2,205	1,990	2,066	2,135	1,800	1,631	1,758	1,530	1,586	1,683	1,675	1,712	
Grampian	276,938	3,186	3,145	3,092	3,022	2,878	2,933	2,707	2,687	2,671	2,726	2,671	2,921	2,857	2,924																		

Table 2 Estimated population by sex, single year of age and administrative area: 30 June 2010

PERSONS Area	Age																														PERSONS (continued)
	31	32	33	34	35	36	37	38	39	40	41	42	43	44	45	46	47	48	49	50	51	52	53	54	55	56	57	58	59	60	
SCOTLAND	64,662	59,396	57,474	60,778	61,287	62,171	66,331	70,619	74,650	74,300	77,077	78,657	80,207	79,453	81,673	81,697	80,840	79,575	78,164	76,292	75,363	73,581	71,578	69,429	66,947	66,127	64,816	62,512	63,553	64,155	
Council areas																															
Aberdeen City	3,489	3,210	3,026	2,868	2,847	2,854	2,924	3,004	2,989	2,929	3,013	2,913	3,059	2,969	3,080	3,100	3,053	2,990	2,839	3,121	3,006	2,897	2,763	2,768	2,693	2,607	2,409	2,430	2,379	2,389	
Aberdeenshire	2,433	2,494	2,534	2,631	2,706	3,085	3,316	3,377	3,905	3,794	4,082	3,926	4,136	4,059	4,119	4,132	4,094	3,952	3,898	3,775	3,785	3,854	3,686	3,591	3,603	3,652	3,382	3,234	3,374	3,347	
Angus	986	1,005	973	1,120	1,095	1,172	1,381	1,487	1,513	1,432	1,571	1,528	1,676	1,657	1,761	1,787	1,738	1,811	1,653	1,771	1,624	1,567	1,558	1,564	1,445	1,534	1,618	1,471	1,532	1,573	
Argyll & Bute	655	613	700	821	889	847	1,047	1,097	1,115	1,238	1,244	1,374	1,341	1,316	1,461	1,400	1,393	1,365	1,425	1,370	1,345	1,356	1,300	1,329	1,214	1,298	1,221	1,216	1,396	1,307	
Clackmannanshire	500	570	535	574	564	596	671	729	683	764	840	777	915	804	834	854	830	771	780	743	761	664	701	664	706	682	651	622	652	689	
Dumfries & Galloway	1,285	1,180	1,116	1,370	1,304	1,458	1,525	1,808	1,929	1,907	2,064	2,051	2,172	2,297	2,375	2,368	2,418	2,375	2,299	2,231	2,184	2,196	2,129	2,144	2,074	2,108	2,090	2,060	2,165	2,312	
Dundee City	2,131	1,569	1,442	1,426	1,470	1,454	1,538	1,564	1,814	1,714	1,804	1,736	1,806	1,926	1,986	1,957	2,051	1,969	2,005	1,976	1,865	1,923	1,852	1,669	1,676	1,567	1,571	1,576	1,508	1,596	
East Ayrshire	1,260	1,220	1,096	1,348	1,390	1,315	1,481	1,707	1,733	1,776	1,916	1,929	1,993	1,876	2,042	1,902	1,901	1,818	1,822	1,729	1,790	1,691	1,718	1,555	1,542	1,525	1,588	1,457	1,556	1,668	
East Dunbartonshire	939	752	893	837	811	959	1,091	1,267	1,289	1,415	1,464	1,478	1,619	1,573	1,738	1,736	1,836	1,821	1,762	1,686	1,794	1,658	1,730	1,566	1,504	1,441	1,495	1,309	1,394	1,417	
East Lothian	774	830	893	968	1,143	1,090	1,244	1,316	1,558	1,531	1,568	1,593	1,681	1,491	1,702	1,627	1,601	1,548	1,547	1,468	1,471	1,429	1,457	1,348	1,289	1,285	1,241	1,147	1,232	1,203	
East Renfrewshire	753	751	694	780	714	889	946	1,024	1,197	1,194	1,284	1,339	1,448	1,462	1,461	1,532	1,579	1,546	1,513	1,505	1,505	1,408	1,374	1,339	1,280	1,146	1,109	1,151	1,044	1,088	
Edinburgh, City of	9,169	8,143	7,608	7,447	7,425	6,877	6,844	6,864	7,148	6,717	6,642	6,919	6,971	6,698	6,751	6,622	6,787	6,454	6,514	6,247	6,083	5,890	5,953	5,467	5,224	5,130	4,968	4,902	5,001	5,002	
Eilean Siar	280	200	261	320	273	268	329	364	326	349	417	433	404	381	392	415	400	421	392	402	386	390	405	369	384	347	392	382	367	418	
Falkirk	1,889	1,816	1,750	1,869	1,970	2,061	2,099	2,273	2,354	2,314	2,413	2,565	2,550	2,410	2,534	2,439	2,402	2,401	2,289	2,241	2,133	2,122	2,026	1,974	1,837	1,859	1,849	1,818	1,960	1,961	
Fife	3,924	3,656	3,642	4,011	3,938	4,087	4,460	4,844	5,147	5,158	5,500	5,575	5,272	5,531	5,634	5,628	5,525	5,515	5,386	5,265	5,169	5,103	4,906	4,847	4,645	4,659	4,496	4,434	4,549	4,601	
Glasgow City	10,658	9,506	8,798	8,979	8,566	8,212	8,438	8,563	8,677	8,305	8,534	8,453	8,246	8,517	8,508	8,841	8,534	8,579	8,281	8,041	7,926	7,425	7,295	7,214	6,861	6,402	6,147	5,741	5,546	5,469	
Highland	2,439	2,150	2,114	2,394	2,428	2,413	2,652	2,844	2,999	3,071	3,040	3,328	3,402	3,505	3,646	3,645	3,551	3,403	3,561	3,492	3,403	3,409	3,272	3,284	3,288	3,252	3,260	3,201	3,164	3,205	
Inverclyde	823	793	750	738	846	808	987	989	1,026	1,061	1,087	1,221	1,271	1,253	1,236	1,318	1,390	1,378	1,255	1,270	1,234	1,150	1,201	1,129	1,064	1,016	1,001	1,000	1,101	1,028	
Midlothian	826	729	801	834	889	934	937	1,057	1,189	1,265	1,209	1,300	1,249	1,272	1,277	1,249	1,354	1,236	1,215	1,270	1,247	1,199	1,166	1,092	1,077	1,060	1,063	1,024	1,049	1,081	
Moray	890	797	819	949	912	991	1,090	1,220	1,357	1,299	1,415	1,352	1,440	1,409	1,403	1,374	1,464	1,396	1,344	1,268	1,262	1,294	1,218	1,246	1,137	1,157	1,173	1,057	1,182	1,214	
North Ayrshire	1,330	1,251	1,233	1,424	1,334	1,560	1,515	1,671	1,871	1,946	1,931	1,992	2,071	2,059	2,137	2,165	2,078	2,083	1,963	1,953	2,004	1,951	1,907	1,880	1,783	1,787	1,806	1,758	1,782	1,842	
North Lanarkshire	3,939	3,693	3,495	4,138	3,995	4,135	4,385	4,741	4,857	5,073	5,208	5,200	5,296	5,256	5,333	5,130	5,005	5,142	4,856	4,685	4,606	4,582	4,523	4,291	4,103	4,150	4,070	3,748	3,718	3,884	
Orkney Islands	228	201	161	208	229	194	247	231	272	308	253	326	359	343	318	318	329	329	316	317	303	285	320	311	279	286	308	274	287	270	
Perth & Kinross	1,487	1,393	1,377	1,315	1,434	1,603	1,648	1,834	1,879	1,890	2,028	2,183	2,184	2,275	2,308	2,375	2,330	2,182	2,185	1,992	2,179	2,089	2,039	1,922	1,963	1,958	2,041	1,887	1,905	2,077	
Renfrewshire	1,920	1,839	1,772	1,696	1,865	1,948	2,029	2,227	2,413	2,547	2,593	2,738	2,855	2,855	2,852	2,703	2,902	2,852	2,578	2,584	2,539	2,326	2,289	2,106	2,227	2,130	2,009	2,218	2,078		
Scottish Borders	924	915	964	1,039	1,179	1,135	1,315	1,521	1,612	1,631	1,703	1,817	1,864	1,845	1,835	1,868	1,912	1,742	1,774	1,789	1,797	1,704	1,659	1,602	1,539	1,587	1,578	1,520	1,590	1,626	
Shetland Islands	285	228	315	260	288	255	312	327	322	312	310	322	317	366	325	395	355	366	351	323	308	322	288	318	334	306	308	293	309	332	
South Ayrshire	1,093	990	922	941	1,134	1,120	1,226	1,394	1,473	1,477	1,449	1,593	1,609	1,608	1,769	1,754	1,646	1,774	1,774	1,659	1,692	1,733	1,638	1,588	1,562	1,548	1,557	1,574	1,553	1,543	
South Lanarkshire	3,483	3,330	3,128	3,480	3,662	3,639	4,028	4,303	4,586	4,580	4,866	4,905	4,947	4,780	4,929	5,210	5,002	4,929	4,862	4,881	4,778	4,688	4,570	4,406	4,273	4,223	4,024	3,947	3,761	3,793	
Stirling	817	717	798	777	887	881	1,045	1,195	1,293	1,302	1,309	1,365	1,318	1,429	1,423	1,419	1,356	1,328	1,364	1,315	1,249	1,213	1,148	1,106	1,081	1,122	1,118	1,098	1,122	1,110	
West Dunbartonshire	1,001	922	944	999	979	1,002	1,083	1,116	1,221	1,250	1,359	1,409	1,403	1,410	1,453	1,499	1,466	1,340	1,439	1,373	1,337	1,387	1,252	1,327	1,284	1,180	1,109	1,168	1,133	1,072	
West Lothian	2,052	1,933	1,920	2,217	2,121	2,329	2,498	2,661	2,903	2,751	2,961	3,017	3,099	2,821	3,048	2,786	2,757	2,709	2,648	2,556	2,553	2,463	2,198	2,230	2,097	2,026	2,043	2,005	2,024	1,960	
NHS Board areas																															
Ayrshire & Arran	3,683	3,461	3,251	3,713	3,858	3,995	4,222	4,772	5,077	5,199	5,296	5,514	5,673	5,543	5,948	5,821	5,625	5,675	5,559	5,341	5,486	5,375	5,263	5,023	4,887	4,860	4,951	4,789	4,891	5,053	
Borders	924	915	964	1,039	1,179	1,135	1,315	1,521	1,612	1,631	1,703	1,817	1,864	1,845	1,835	1,868	1,912	1,742	1,774	1,789	1,797	1,704	1,659	1,602	1,539	1,587	1,578	1,520	1,590	1,626	
Dumfries & Galloway	1,285	1,180	1,116	1,370	1,304	1,458	1,525	1,808	1,929	1,907	2,064	2,051	2,172	2,297	2,375	2,368	2,418	2,375	2,299	2,231	2,184	2,196	2,129	2,144	2,074	2,108	2,090	2,060	2,165	2,312	
Fife	3,925	3,656	3,642	4,011	3,937	4,087	4,460	4,846	5,143	5,158	5,498	5,573	5,624	5,529	5,632	5,629	5,522	5,512	5,385	5,265	5,168	5,102	4,905	4,847	4,645	4,656	4,495	4,433	4,549	4,598	
Forth Valley	3,203	3,096	3,073	3,216	3,411	3,537	3,813	4,190	4,324	4,372	4,556	4,702	4,779	4,639	4,784	4,707	4,588	4,493	4,431	4,296	4,135	3,9									

Table 2 (continued)

MALES (continued)

Area	Age																														
	31	32	33	34	35	36	37	38	39	40	41	42	43	44	45	46	47	48	49	50	51	52	53	54	55	56	57	58	59	60	
SCOTLAND	32,937	29,552	28,709	29,838	29,654	30,153	32,026	33,621	35,761	35,557	36,972	37,423	38,767	37,942	39,139	38,947	38,465	38,625	37,674	36,962	36,368	35,454	34,676	33,930	32,614	32,310	31,695	30,538	30,925	31,393	
Council areas																															
Aberdeen City	1,972	1,816	1,786	1,537	1,485	1,499	1,552	1,532	1,517	1,430	1,527	1,470	1,630	1,441	1,473	1,536	1,546	1,457	1,385	1,550	1,476	1,442	1,409	1,402	1,369	1,364	1,249	1,203	1,209	1,205	
Aberdeenshire	1,204	1,233	1,198	1,230	1,301	1,447	1,584	1,553	1,839	1,869	1,994	1,934	2,064	1,991	2,009	2,029	2,025	2,026	1,949	1,857	1,912	2,001	1,825	1,798	1,789	1,819	1,660	1,615	1,703	1,691	
Angus	521	457	457	556	522	542	644	720	703	672	733	706	791	784	843	890	841	904	755	854	794	765	726	762	695	743	811	721	760	800	
Argyll & Bute	347	328	334	395	439	428	528	532	534	582	612	690	682	652	680	676	676	687	738	674	638	663	662	684	597	643	604	586	664	628	
Clackmannanshire	242	263	247	290	291	270	296	354	325	379	422	371	432	372	412	436	414	368	381	374	383	286	348	302	349	326	324	301	289	341	
Dumfries & Galloway	600	547	551	659	589	702	685	892	925	921	961	938	1,053	1,124	1,171	1,131	1,169	1,130	1,111	1,036	1,032	1,065	1,008	1,042	1,000	1,055	996	995	1,081	1,161	
Dundee City	1,080	810	734	662	691	696	714	736	844	794	814	767	811	879	911	920	888	890	927	892	902	891	819	832	797	725	766	739	709		
East Ayrshire	582	609	502	665	699	638	728	815	832	845	928	873	955	911	976	908	904	878	893	778	883	806	827	759	751	744	782	687	792	849	
East Dunbartonshire	503	348	461	352	343	435	474	563	595	673	668	697	718	698	853	775	853	857	824	779	861	787	803	766	735	679	725	606	689	672	
East Lothian	393	369	367	430	553	502	611	595	732	722	739	742	776	723	865	730	763	776	747	696	723	687	713	677	608	652	597	541	566	565	
East Renfrewshire	345	368	314	334	294	405	408	477	532	536	602	560	662	694	650	699	751	728	742	718	770	683	680	674	612	534	536	574	485	536	
Edinburgh, City of	4,686	4,083	3,949	3,804	3,745	3,481	3,466	3,334	3,601	3,371	3,302	3,414	3,441	3,254	3,318	3,112	3,224	3,082	3,217	3,011	2,929	2,829	2,844	2,797	2,619	2,568	2,447	2,450	2,383	2,385	
Eilean Siar	126	98	122	151	140	128	163	187	169	165	209	217	209	172	194	201	205	210	199	207	217	193	208	175	189	177	118	189	184	212	
Falkirk	878	872	892	895	920	1,042	1,003	1,082	1,130	1,114	1,155	1,220	1,259	1,155	1,266	1,184	1,133	1,154	1,100	1,132	1,031	1,074	970	947	871	903	889	873	906	956	
Fife	1,877	1,752	1,726	1,928	1,869	1,977	2,166	2,325	2,432	2,520	2,638	2,658	2,789	2,634	2,672	2,712	2,611	2,673	2,661	2,629	2,497	2,437	2,432	2,350	2,259	2,285	2,194	2,131	2,189	2,208	
Glasgow City	5,688	5,023	4,706	4,665	4,370	4,182	4,308	4,306	4,301	4,050	4,112	3,961	4,002	4,035	3,960	4,033	4,060	4,107	3,861	3,858	3,764	3,470	3,542	3,402	3,440	3,110	3,071	2,784	2,739	2,681	
Highland	1,261	1,066	1,060	1,182	1,193	1,118	1,284	1,357	1,418	1,395	1,386	1,630	1,649	1,733	1,705	1,739	1,749	1,710	1,713	1,738	1,623	1,648	1,633	1,627	1,606	1,644	1,579	1,605	1,570	1,594	
Inverclyde	420	408	390	347	385	368	480	473	485	479	470	539	610	551	593	600	658	671	623	590	560	573	587	559	511	472	491	484	535	505	
Midlothian	398	334	371	352	410	429	438	468	533	628	550	589	610	564	585	578	585	570	564	610	591	558	509	542	502	516	502	497	480	534	
Moray	476	428	403	489	434	539	552	613	681	676	748	706	711	713	692	707	744	710	681	658	655	650	583	626	547	551	583	520	574	593	
North Ayrshire	636	594	571	660	556	774	691	745	839	927	891	911	917	919	1,018	1,022	908	1,008	937	916	950	889	901	908	861	837	827	857	870	906	
North Lanarkshire	1,983	1,777	1,638	1,972	1,949	1,972	2,085	2,152	2,310	2,407	2,476	2,436	2,544	2,526	2,536	2,486	2,304	2,527	2,322	2,170	2,178	2,131	2,198	2,044	1,946	1,973	1,974	1,819	1,786	1,888	
Orkney Islands	105	95	74	109	101	86	126	106	109	157	133	163	185	175	150	158	178	173	158	151	150	147	155	146	137	158	149	140	148	131	
Perth & Kinross	797	742	681	698	709	748	784	855	831	876	946	998	1,038	1,132	1,087	1,209	1,121	1,070	1,051	986	1,072	1,019	984	900	965	945	994	914	917	1,030	
Renfrewshire	928	875	866	874	895	899	933	977	1,129	1,152	1,237	1,291	1,258	1,346	1,392	1,279	1,402	1,294	1,233	1,238	1,213	1,140	1,105	975	1,050	1,033	967	1,034	1,020		
Scottish Borders	459	453	485	455	561	505	602	742	743	803	843	914	900	909	917	878	903	883	877	851	849	817	796	778	783	775	776	758	786	807	
Shetland Islands	138	113	141	139	147	114	155	157	166	156	155	153	170	190	182	192	190	185	175	164	161	155	139	166	155	168	152	156	152	174	
South Ayrshire	591	447	426	448	528	551	583	665	704	670	689	759	801	747	859	833	725	870	838	828	807	806	776	768	766	757	757	772	742	747	
South Lanarkshire	1,729	1,552	1,528	1,659	1,714	1,689	1,876	2,000	2,180	2,191	2,360	2,357	2,337	2,258	2,311	2,414	2,363	2,337	2,374	2,373	2,230	2,334	2,134	2,106	1,990	2,035	1,971	1,905	1,864	1,837	
Stirling	419	305	305	332	401	419	438	533	592	564	579	630	619	657	694	693	619	646	648	672	648	586	577	544	523	522	543	559	564	559	
West Dunbartonshire	509	437	430	466	456	482	503	516	576	565	634	667	652	637	703	697	686	617	667	678	627	668	581	643	598	532	559	580	530	508	
West Lothian	1,044	950	994	1,103	964	1,086	1,166	1,259	1,454	1,268	1,459	1,462	1,492	1,366	1,465	1,377	1,358	1,321	1,299	1,203	1,217	1,170	1,095	1,112	1,034	976	977	983	995	961	
NHS Board areas																															
Ayrshire & Arran	1,809	1,650	1,499	1,773	1,783	1,963	2,002	2,225	2,375	2,442	2,508	2,543	2,673	2,577	2,853	2,763	2,537	2,756	2,668	2,522	2,640	2,501	2,504	2,435	2,378	2,338	2,366	2,316	2,404	2,502	
Borders	459	453	485	455	561	505	602	742	743	803	843	914	900	909	917	878	903	883	877	851	849	817	796	778	783	775	776	758	786	807	
Dumfries & Galloway	600	547	551	659	589	702	685	892	925	921	961	938	1,053	1,124	1,171	1,131	1,169	1,130	1,111	1,036	1,032	1,065	1,008	1,042	1,000	1,055	996	995	1,081	1,161	
Fife	1,878	1,752	1,726	1,928	1,869	1,977	2,166	2,327	2,429	2,520	2,638	2,658	2,788	2,634	2,672	2,712	2,608	2,672	2,660	2,629	2,496	2,437	2,432	2,350	2,259	2,284	2,193	2,130	2,189	2,206	
Forth Valley	1,538	1,435	1,440	1,515	1,607	1,729	1,733	1,963	2,042	2,054	2,154	2,216	2,307	2,182	2,370	2,308	2,166	2,160	2,128	2,176	2,061	1,946	1,894	1,790	1,742	1,751	1,748	1,730	1,756	1,854	
Grampian	3,652	3,477	3,387	3,256	3,220	3,485	3,688	3,698	4,037	3,975	4,269	4,110	4,405	4,145	4,174	4,272	4,315	4,193	4,015	4,065	4,043	4,093	3,817	3,826	3,705	3,734	3,492	3,338	3,486	3,489	
Greater Glasgow & Clyde	8,879	7,897	7,587	7,468	7,235	7,207	7,595	7,829	8,163	8,006	8,360	8,326	8,446	8,471	8,666	8,742	8,821	8,942	8,536	8,386	8,407	7,948	7,839	7,638	7,368	6,880	6,917	6,472	6,453	6,386	
Highland	1,608	1,394	1,394	1,577	1,632	1,546	1,812	1,889	1,952	1,977	1,998	2,320	2,331	2,385	2,385	2,415	2,425	2,397	2,451	2,412	2,261	2,311	2,295	2,311	2,203	2,287</					

Table 2 (continued)

FEMALES (continued)

Area	Age																														
	31	32	33	34	35	36	37	38	39	40	41	42	43	44	45	46	47	48	49	50	51	52	53	54	55	56	57	58	59	60	
SCOTLAND	31,725	29,844	28,765	30,940	31,633	32,018	34,305	36,998	38,889	38,743	40,105	41,234	41,440	41,511	42,534	42,750	42,375	40,950	40,490	39,330	38,995	38,127	36,902	35,499	34,333	33,817	33,121	31,974	32,628	32,762	
Council areas																															
Aberdeen City	1,517	1,394	1,240	1,331	1,362	1,355	1,372	1,472	1,472	1,499	1,486	1,443	1,429	1,528	1,607	1,564	1,507	1,533	1,454	1,571	1,530	1,455	1,354	1,366	1,324	1,243	1,160	1,227	1,170	1,184	
Aberdeenshire	1,229	1,261	1,336	1,401	1,405	1,638	1,732	1,824	2,066	1,925	2,088	1,992	2,072	2,068	2,110	2,103	2,069	1,926	1,949	1,918	1,873	1,853	1,861	1,793	1,814	1,833	1,722	1,619	1,671	1,656	
Angus	465	548	516	564	573	630	737	767	810	760	838	822	885	873	918	897	907	898	917	830	802	832	802	750	791	807	750	772	773		
Argyll & Bute	308	285	366	426	450	419	519	565	581	656	632	684	659	664	781	724	717	678	687	696	707	693	638	645	617	655	617	630	732	679	
Clackmannanshire	258	307	288	284	273	326	375	375	358	385	418	406	483	432	422	418	416	403	399	369	378	378	353	362	357	356	327	321	363	348	
Dumfries & Galloway	685	633	565	711	715	756	840	916	1,004	986	1,103	1,113	1,119	1,173	1,204	1,237	1,249	1,245	1,188	1,195	1,152	1,131	1,121	1,102	1,074	1,053	1,094	1,065	1,084	1,151	
Dundee City	1,051	759	708	764	779	758	824	828	970	920	990	969	995	1,047	1,075	1,037	1,131	1,081	1,115	1,049	973	1,021	961	850	844	770	846	810	769	887	
East Ayrshire	678	611	594	683	691	677	753	892	901	931	988	1,056	1,038	965	1,066	994	997	940	929	951	907	885	891	796	791	781	806	770	764	819	
East Dunbartonshire	436	404	432	485	468	524	617	704	694	742	796	781	901	875	885	961	983	964	938	907	933	871	927	800	769	762	770	703	705	745	
East Lothian	381	461	526	538	590	588	633	721	826	809	829	851	905	768	837	897	838	772	800	772	748	742	744	671	681	633	644	606	666	638	
East Renfrewshire	408	383	380	446	420	484	538	547	665	658	682	779	786	768	811	833	828	818	771	787	735	725	694	665	668	612	573	577	559	552	
Edinburgh, City of	4,483	4,060	3,659	3,643	3,680	3,396	3,378	3,530	3,547	3,346	3,340	3,505	3,530	3,444	3,433	3,510	3,563	3,372	3,297	3,236	3,154	3,061	3,109	2,670	2,605	2,562	2,521	2,452	2,618	2,617	
Eilean Siar	154	102	139	169	133	140	166	177	157	184	208	216	195	209	198	214	195	211	193	195	169	197	197	194	195	170	174	193	183	206	
Falkirk	1,011	944	858	974	1,050	1,019	1,096	1,191	1,224	1,200	1,258	1,345	1,291	1,255	1,268	1,255	1,269	1,247	1,189	1,109	1,102	1,048	1,056	1,027	966	956	960	945	1,054	1,005	
Fife	2,047	1,904	1,916	2,083	2,069	2,110	2,294	2,519	2,282	2,638	2,862	2,917	2,638	2,897	2,962	2,916	2,914	2,842	2,725	2,636	2,672	2,666	2,474	2,497	2,386	2,374	2,302	2,303	2,360	2,393	
Glasgow City	4,970	4,483	4,092	4,314	4,196	4,030	4,130	4,257	4,376	4,255	4,422	4,492	4,244	4,482	4,548	4,808	4,474	4,472	4,420	4,183	4,162	3,955	3,753	3,812	3,421	3,292	3,076	2,957	2,807	2,788	
Highland	1,178	1,084	1,054	1,212	1,235	1,295	1,368	1,487	1,581	1,676	1,654	1,698	1,753	1,772	1,941	1,906	1,802	1,693	1,848	1,754	1,780	1,761	1,639	1,657	1,682	1,608	1,681	1,596	1,594	1,611	
Inverclyde	403	385	360	391	461	440	507	516	541	582	617	682	661	702	643	718	732	707	632	680	674	577	614	570	553	544	510	516	566	523	
Midlothian	428	395	430	482	479	505	499	589	656	637	659	711	639	708	692	671	769	666	651	660	656	641	657	550	575	544	561	527	569	547	
Moray	414	369	416	460	478	452	538	607	676	623	667	646	729	696	711	667	720	686	663	610	607	644	635	620	590	606	593	608	621	621	
North Ayrshire	694	657	662	764	778	786	824	926	1,032	1,019	1,040	1,081	1,154	1,140	1,119	1,143	1,170	1,075	1,026	1,037	1,054	1,062	1,006	972	922	950	979	901	912	936	
North Lanarkshire	1,956	1,916	1,857	2,166	2,046	2,163	2,300	2,589	2,547	2,666	2,732	2,764	2,752	2,730	2,797	2,644	2,701	2,615	2,534	2,515	2,428	2,451	2,325	2,247	2,157	2,177	2,096	1,928	1,932	1,996	
Orkney Islands	123	106	87	99	128	108	121	125	163	151	120	163	174	168	160	151	156	158	166	153	138	165	165	142	128	159	134	139	139	139	
Perth & Kinross	690	651	696	617	725	855	864	979	1,048	1,014	1,082	1,185	1,146	1,143	1,221	1,166	1,209	1,112	1,134	1,006	1,107	1,070	1,055	1,022	998	1,013	1,047	973	988	1,047	
Renfrewshire	992	964	906	822	970	1,049	1,096	1,250	1,284	1,395	1,356	1,447	1,476	1,509	1,466	1,460	1,424	1,500	1,558	1,345	1,346	1,326	1,186	1,184	1,131	1,177	1,097	1,042	1,184	1,058	
Scottish Borders	465	462	479	584	618	630	713	779	869	828	860	903	964	936	918	990	1,009	859	897	938	948	887	863	824	756	812	802	762	804	819	
Shetland Islands	147	115	174	121	141	141	157	170	156	156	155	169	147	176	143	203	165	181	176	159	147	167	149	152	179	138	156	137	157	158	
South Ayrshire	502	543	496	493	606	569	643	729	769	807	760	834	808	861	910	921	921	904	936	831	885	927	862	820	796	791	800	802	811	796	
South Lanarkshire	1,754	1,778	1,600	1,821	1,948	1,950	2,152	2,303	2,406	2,389	2,506	2,548	2,610	2,522	2,618	2,796	2,639	2,592	2,488	2,508	2,548	2,354	2,436	2,300	2,283	2,188	2,053	2,042	1,897	1,956	
Stirling	398	412	493	445	486	462	607	662	701	738	730	735	699	772	729	726	737	682	716	643	601	627	571	562	558	600	575	539	558	551	
West Dunbartonshire	492	485	514	533	523	520	580	600	645	685	725	742	751	773	750	802	780	723	772	695	710	719	671	684	686	648	550	588	603	564	
West Lothian	1,008	983	926	1,114	1,157	1,243	1,332	1,402	1,449	1,483	1,502	1,555	1,607	1,455	1,583	1,409	1,399	1,388	1,349	1,292	1,326	1,293	1,103	1,118	1,063	1,050	1,066	1,022	1,029	999	
NHS Board areas																															
Ayrshire & Arran	1,874	1,811	1,752	1,940	2,075	2,032	2,220	2,547	2,702	2,757	2,788	2,971	3,000	2,966	3,095	3,058	3,088	2,919	2,891	2,819	2,846	2,874	2,759	2,588	2,509	2,522	2,585	2,473	2,487	2,551	
Borders	465	462	479	584	618	630	713	779	869	828	860	903	964	936	918	990	1,009	859	897	938	948	887	863	824	756	812	802	762	804	819	
Dumfries & Galloway	685	633	565	711	715	756	840	916	1,004	986	1,103	1,113	1,119	1,173	1,204	1,237	1,249	1,245	1,188	1,195	1,152	1,131	1,121	1,102	1,074	1,053	1,094	1,065	1,084	1,151	
Fife	2,047	1,904	1,916	2,083	2,068	2,110	2,294	2,519	2,282	2,638	2,860	2,915	2,836	2,895	2,960	2,917	2,914	2,840	2,725	2,636	2,672	2,665	2,473	2,497	2,386	2,372	2,302	2,303	2,360	2,392	
Forth Valley	1,665	1,661	1,633	1,701	1,804	1,808	2,080	2,227	2,282	2,318	2,402	2,486	2,472	2,457	2,414	2,399	2,422	2,333	2,303	2,120	2,074	2,053	1,973	1,948	1,878	1,908	1,858	1,801	1,971	1,901	
Grampian	3,160	3,024	2,992	3,192	3,245	3,445	3,642	3,903	4,214	4,047	4,241	4,081	4,230	4,292	4,428	4,334	4,296	4,145	4,066	4,099	4,010	3,952	3,850	3,779	3,728	3,682	3,472	3,383	3,449	3,461	
Greater Glasgow & Clyde	8,227	7,637	7,187	7,497	7,596	7,588	8,039	8,495	8,835	8,924	9,204	9,512	9,445	9,726	9,762	10,237	9,848	9,796	9,716	9,154	9,166	8,764	8,452	8,310	7,779	7,580	7,087	6,876	6,863	6,687	
Highland	1,486	1,369	1,420	1,638	1,685	1,714	1,887	2,052	2,162	2																					

Table 2 Estimated population by sex, single year of age and administrative area: 30 June 2010

PERSONS (continued)

PERSONS Area	Age																													
	61	62	63	64	65	66	67	68	69	70	71	72	73	74	75	76	77	78	79	80	81	82	83	84	85	86	87	88	89	90+
SCOTLAND	65,980	67,789	73,446	56,119	53,635	54,442	52,776	48,565	45,353	46,506	45,268	44,133	42,074	41,105	39,143	36,528	34,598	33,979	31,847	29,317	27,073	23,720	22,051	20,775	18,120	16,273	13,589	12,330	11,105	35,187
Council areas																														
Aberdeen City	2,526	2,515	2,693	2,000	1,671	1,715	1,771	1,710	1,556	1,666	1,555	1,578	1,519	1,476	1,418	1,422	1,331	1,412	1,265	1,183	1,091	917	894	816	738	632	522	483	478	1,286
Aberdeenshire	3,519	3,543	3,735	2,925	2,639	2,636	2,507	2,352	2,041	2,199	2,060	1,990	1,820	1,853	1,721	1,623	1,507	1,395	1,355	1,244	1,181	1,064	963	863	893	817	599	578	477	1,645
Angus	1,650	1,762	1,969	1,407	1,363	1,386	1,348	1,227	1,123	1,183	1,087	1,073	1,076	1,033	998	923	814	868	877	744	669	632	566	560	465	439	380	332	251	877
Argyll & Bute	1,422	1,423	1,708	1,245	1,206	1,228	1,150	1,127	1,038	1,113	1,014	938	955	898	852	757	737	750	660	617	594	516	459	450	379	347	261	253	242	811
Clackmannanshire	710	738	774	569	598	574	543	486	437	421	428	436	463	384	345	291	297	303	248	270	215	206	180	170	134	135	113	100	100	214
Dumfries & Galloway	2,364	2,389	2,666	2,085	2,023	2,045	2,014	1,920	1,761	1,779	1,688	1,604	1,633	1,532	1,392	1,356	1,356	1,234	1,140	1,113	1,021	849	874	725	692	541	522	455	370	1,210
Dundee City	1,673	1,683	1,940	1,410	1,432	1,320	1,333	1,262	1,255	1,306	1,286	1,321	1,177	1,208	1,108	1,092	1,042	1,041	1,000	908	851	753	655	651	582	476	472	437	363	1,141
East Ayrshire	1,639	1,748	1,908	1,375	1,397	1,364	1,298	1,199	1,160	1,134	1,105	1,075	1,064	979	970	892	866	796	744	673	577	537	484	490	403	346	315	272	244	773
East Dunbartonshire	1,440	1,452	1,592	1,225	1,236	1,192	1,136	1,065	1,013	1,023	1,046	995	1,008	912	912	887	793	771	701	683	626	570	531	429	418	340	294	276	215	750
East Lothian	1,172	1,355	1,383	1,101	1,064	1,149	1,013	970	938	878	854	955	776	773	769	752	680	682	617	586	563	481	456	455	352	299	297	251	238	684
East Renfrewshire	1,151	1,183	1,261	954	930	934	922	793	820	795	781	835	759	770	727	688	644	676	619	567	499	468	439	447	321	314	266	255	213	617
Edinburgh, City of	5,063	5,055	5,627	4,032	3,765	3,803	3,675	3,348	3,188	3,296	3,278	3,331	3,133	3,191	3,011	2,887	2,848	2,779	2,730	2,471	2,288	2,125	1,990	1,869	1,603	1,501	1,297	1,267	1,149	3,570
Eilean Siar	412	385	443	352	301	348	340	291	321	300	286	281	272	245	250	238	232	212	166	185	187	154	145	142	124	117	97	104	85	244
Falkirk	1,976	1,993	2,184	1,603	1,608	1,573	1,610	1,406	1,387	1,332	1,440	1,332	1,229	1,171	1,128	1,046	974	923	877	802	737	612	614	532	516	453	343	318	279	915
Fife	4,924	5,088	5,656	4,300	4,159	4,229	3,960	3,687	3,236	3,367	3,273	3,053	3,090	2,982	2,775	2,607	2,415	2,309	2,153	2,088	1,831	1,714	1,689	1,523	1,328	1,217	997	865	833	2,835
Glasgow City	5,519	5,668	5,865	4,657	4,379	4,405	4,445	4,076	3,974	4,112	4,107	4,050	3,860	3,862	3,978	3,469	3,356	3,423	3,199	2,852	2,705	2,345	2,073	2,046	1,712	1,489	1,290	1,180	1,089	3,387
Highland	3,330	3,452	3,444	2,771	2,677	2,763	2,695	2,450	2,166	2,279	2,064	2,096	1,893	1,865	1,738	1,680	1,593	1,560	1,453	1,332	1,305	1,073	1,020	954	854	810	643	582	539	1,594
Inverclyde	1,019	1,059	1,110	935	851	913	895	727	756	739	737	740	688	697	622	588	571	612	561	492	477	358	351	344	260	242	185	178	615	
Midlothian	1,142	1,132	1,254	982	957	918	829	746	744	725	723	716	626	671	610	561	487	520	500	436	406	340	331	274	259	255	197	142	176	488
Moray	1,168	1,249	1,384	1,025	1,052	1,036	979	960	856	909	832	825	784	736	810	767	675	608	608	504	503	449	396	382	355	300	248	230	163	628
North Ayrshire	1,912	2,053	2,231	1,643	1,569	1,674	1,578	1,494	1,390	1,479	1,324	1,336	1,183	1,186	1,129	1,049	1,009	974	875	786	760	639	527	573	448	406	384	303	336	903
North Lanarkshire	3,868	4,016	4,125	3,273	3,127	3,330	3,261	2,790	2,717	2,819	2,766	2,686	2,452	2,414	2,256	2,052	1,967	1,829	1,728	1,620	1,443	1,203	1,120	1,064	853	794	624	563	517	1,608
Orkney Islands	308	303	338	251	243	273	271	273	198	274	216	212	173	164	174	155	129	131	125	138	120	103	77	84	74	68	40	59	51	159
Perth & Kinross	2,040	2,160	2,361	1,859	1,762	1,743	1,705	1,657	1,452	1,484	1,529	1,344	1,374	1,303	1,306	1,149	1,090	1,108	1,078	969	902	803	816	732	594	606	517	435	354	1,295
Renfrewshire	2,186	2,107	2,424	1,793	1,773	1,850	1,679	1,586	1,535	1,465	1,513	1,455	1,391	1,331	1,198	1,032	1,078	1,056	950	854	757	636	682	550	463	414	384	282	1,059	
Scottish Borders	1,673	1,799	2,036	1,497	1,418	1,481	1,505	1,244	1,177	1,218	1,275	1,169	1,101	1,045	970	917	881	860	842	750	680	649	556	523	488	392	348	327	301	763
Shetland Islands	306	314	337	241	263	243	269	251	202	214	180	173	180	162	150	156	120	126	118	116	111	100	89	82	92	63	53	61	56	164
South Ayrshire	1,679	1,636	1,892	1,461	1,480	1,427	1,432	1,314	1,167	1,246	1,130	1,165	1,161	1,131	1,032	972	948	911	852	764	699	617	598	627	499	502	361	359	309	1,084
South Lanarkshire	3,888	3,982	4,312	3,318	3,164	3,259	3,212	2,933	2,799	2,808	2,695	2,647	2,539	2,518	2,242	2,214	2,141	2,021	1,890	1,749	1,659	1,369	1,301	1,185	992	932	769	649	571	1,967
Stirling	1,119	1,205	1,378	1,023	886	1,002	931	890	814	834	855	747	781	719	686	606	609	598	531	513	438	406	353	322	366	267	203	213	220	605
West Dunbartonshire	1,105	1,209	1,223	1,018	941	969	885	832	752	758	784	723	711	702	653	620	646	606	536	529	475	385	357	330	300	253	205	174	197	587
West Lothian	2,077	2,133	2,193	1,789	1,701	1,660	1,585	1,499	1,380	1,351	1,357	1,252	1,150	1,132	1,080	914	808	863	743	683	606	526	511	449	407	347	272	238	229	709
NHS Board areas																														
Ayrshire & Arran	5,230	5,437	6,031	4,479	4,446	4,465	4,308	4,007	3,717	3,859	3,559	3,576	3,408	3,296	3,131	2,913	2,823	2,681	2,471	2,223	2,036	1,793	1,609	1,690	1,350	1,254	1,060	934	889	2,760
Borders	1,673	1,799	2,036	1,497	1,418	1,481	1,505	1,244	1,177	1,218	1,275	1,169	1,101	1,045	970	917	881	860	842	750	680	649	556	523	488	392	348	327	301	763
Dumfries & Galloway	2,364	2,389	2,666	2,085	2,023	2,045	2,014	1,920	1,761	1,779	1,688	1,604	1,633	1,532	1,392	1,356	1,356	1,234	1,140	1,113	1,021	849	874	725	692	541	522	455	370	1,210
Fife	4,923	5,087	5,653	4,298	4,159	4,227	3,958	3,686	3,236	3,366	3,272	3,052	3,090	2,982	2,774	2,606	2,414	2,309	2,152	2,088	1,830	1,714	1,688	1,523	1,328	1,216	997	865	833	2,834
Forth Valley	3,799	3,925	4,336	3,191	3,086	3,145	3,083	2,784	2,637	2,587	2,715	2,509	2,469	2,268	2,155	1,937	1,882	1,822	1,652	1,581	1,385	1,222	1,149	1,022	1,013	856	654	632	590	1,699
Grampian	7,213	7,307	7,812	5,950	5,362	5,387	5,257	5,022	4,453	4,774	4,447	4,393	4,123	4,065	3,949	3,812	3,513	3,415	3,228	2,931	2,775	2,430	2,253	2,061	1,986	1,749	1,369	1,291	1,118	3,559
Greater Glasgow & Clyde	13,355	13,662	14,442	11,394	10,826	11,034	10,686	9,674	9,464	9,521	9,579	9,337	9,055	8,895	8,737	7,945	7,524	7,616	7,093	6,458	6,022	5,198	4,697	4,536	3,767	3,				

Table 2 (continued)

MALES (continued)

Area	Age																														
	61	62	63	64	65	66	67	68	69	70	71	72	73	74	75	76	77	78	79	80	81	82	83	84	85	86	87	88	89	90+	
SCOTLAND	32,223	33,011	35,611	27,334	25,736	26,158	24,829	22,704	20,964	21,432	20,817	20,230	18,946	18,297	17,140	15,788	14,662	14,164	13,119	11,659	10,660	9,096	8,327	7,540	6,472	5,603	4,349	3,891	3,357	9,232	
Council areas																															
Aberdeen City	1,230	1,281	1,327	985	771	821	839	792	731	739	698	746	682	623	618	623	547	593	516	469	396	311	357	301	265	195	135	151	152	394	
Aberdeenshire	1,829	1,838	1,842	1,479	1,319	1,355	1,245	1,122	980	1,065	1,015	997	877	891	835	742	700	618	608	535	510	413	409	341	373	311	204	202	161	444	
Angus	755	874	931	706	644	673	655	603	561	556	509	492	514	494	431	395	357	365	395	334	256	268	203	207	161	149	131	117	56	293	
Argyll & Bute	719	665	789	585	625	635	588	561	501	527	492	443	454	419	380	329	330	321	293	238	266	219	186	154	143	115	102	70	71	211	
Clackmannanshire	354	366	361	288	290	278	250	220	196	195	177	219	207	162	154	140	145	149	96	107	77	93	76	65	45	39	37	26	28	53	
Dumfries & Galloway	1,197	1,209	1,320	1,033	964	1,024	936	918	838	863	787	792	800	715	627	619	629	554	503	479	408	339	361	301	259	172	182	159	122	326	
Dundee City	851	792	932	666	695	675	675	585	547	642	604	598	513	527	478	450	421	408	408	361	337	289	238	215	239	201	150	152	140	341	
East Ayrshire	798	846	924	681	660	669	621	536	544	507	561	510	463	441	435	380	372	327	314	261	229	226	196	170	164	123	102	77	62	199	
East Dunbartonshire	662	710	767	585	582	543	522	486	450	474	462	449	458	421	413	395	350	348	291	298	260	229	189	154	136	115	111	75	67	217	
East Lothian	544	646	675	559	526	533	488	468	443	384	396	457	366	327	323	335	298	313	273	228	236	201	172	179	144	94	101	82	64	172	
East Renfrewshire	543	562	589	500	426	414	400	359	376	355	359	380	348	328	302	281	279	267	255	222	177	170	135	178	117	100	90	76	64	124	
Edinburgh, City of	2,433	2,480	2,687	1,870	1,824	1,797	1,702	1,531	1,468	1,505	1,466	1,413	1,382	1,416	1,304	1,247	1,196	1,099	1,113	958	889	787	709	633	561	523	397	429	350	1,001	
Eilean Siar	212	220	221	185	146	184	150	146	141	127	145	138	122	108	124	104	87	95	67	72	74	52	59	53	39	45	28	23	20	53	
Falkirk	954	962	1,095	781	776	738	791	645	645	613	641	626	554	538	510	486	407	385	352	298	297	235	242	195	172	171	109	125	80	237	
Fife	2,336	2,411	2,780	2,094	2,017	1,991	1,870	1,784	1,535	1,560	1,534	1,433	1,411	1,323	1,266	1,166	1,055	1,036	889	817	742	683	696	540	443	432	292	259	266	642	
Glasgow City	2,729	2,789	2,815	2,228	2,064	2,078	2,002	1,907	1,742	1,798	1,756	1,736	1,641	1,604	1,500	1,279	1,254	1,222	1,189	1,015	963	768	688	684	562	491	384	329	300	735	
Highland	1,688	1,709	1,724	1,394	1,351	1,368	1,320	1,225	974	1,079	956	971	869	829	776	798	690	668	618	584	540	392	378	388	337	304	218	184	175	414	
Inverclyde	488	491	535	452	401	440	406	336	355	316	329	336	278	293	284	258	222	251	195	172	174	139	106	111	91	92	59	38	51	135	
Midlothian	548	545	576	465	491	437	389	349	349	327	344	330	295	301	269	234	210	210	228	169	169	137	148	98	84	91	62	56	50	130	
Moray	572	623	643	510	500	511	452	461	409	437	405	385	376	350	359	348	300	244	248	228	235	182	143	142	125	105	79	68	48	199	
North Ayrshire	896	966	1,066	791	738	808	746	653	620	694	658	616	531	543	508	438	418	406	361	316	277	224	199	209	159	141	139	88	97	221	
North Lanarkshire	1,852	1,896	2,017	1,580	1,438	1,556	1,468	1,298	1,257	1,278	1,238	1,159	1,023	1,031	971	857	816	791	691	637	556	462	424	383	282	258	209	176	146	400	
Orkney Islands	175	143	181	125	112	146	128	129	99	135	114	102	70	75	88	72	60	54	43	58	59	48	27	32	27	31	14	22	14	32	
Perth & Kinross	982	1,081	1,140	941	810	862	787	762	676	718	720	632	638	584	606	531	525	504	481	410	362	346	299	283	196	201	182	141	130	370	
Renfrewshire	1,041	1,028	1,200	819	825	866	796	733	708	677	654	643	598	609	582	483	402	454	432	368	346	314	238	251	214	157	136	139	83	319	
Scottish Borders	812	881	996	728	700	723	738	580	548	576	609	549	499	522	421	413	379	381	374	331	296	282	225	206	185	138	135	109	92	200	
Shetland Islands	163	178	199	125	121	131	131	123	100	110	95	76	86	86	61	81	46	51	62	57	48	28	33	32	33	26	19	13	20	48	
South Ayrshire	843	788	917	689	716	668	689	594	554	577	534	526	548	509	471	419	423	397	343	295	278	239	236	234	181	179	132	141	92	273	
South Lanarkshire	1,892	1,854	2,067	1,582	1,517	1,520	1,498	1,315	1,264	1,251	1,188	1,207	1,118	1,103	952	939	892	829	751	669	601	501	498	432	335	325	220	183	168	567	
Stirling	562	586	668	524	401	471	458	410	393	393	401	340	362	317	317	263	272	239	225	197	171	154	142	103	125	100	56	55	61	165	
West Dunbartonshire	541	547	575	526	460	460	373	372	326	324	341	336	301	300	274	262	241	236	200	185	188	147	100	104	104	74	44	56	57	140	
West Lothian	1,022	1,044	1,052	858	826	783	716	701	634	630	629	593	562	508	501	421	339	349	305	291	243	218	215	162	171	105	90	70	70	177	
NHS Board areas																															
Ayrshire & Arran	2,537	2,600	2,907	2,161	2,114	2,145	2,056	1,783	1,718	1,778	1,753	1,652	1,542	1,493	1,414	1,237	1,213	1,130	1,018	872	784	689	631	613	504	443	373	306	251	693	
Borders	812	881	996	728	700	723	738	580	548	576	609	549	499	522	421	413	379	381	374	331	296	282	225	206	185	138	135	109	92	200	
Dumfries & Galloway	1,197	1,209	1,320	1,033	964	1,024	936	918	838	863	787	792	800	715	627	619	629	554	503	479	408	339	361	301	259	172	182	159	122	326	
Fife	2,336	2,410	2,780	2,094	2,017	1,990	1,869	1,783	1,535	1,560	1,533	1,432	1,411	1,323	1,265	1,166	1,055	1,036	888	817	741	683	696	540	443	432	292	259	266	641	
Forth Valley	1,865	1,907	2,124	1,591	1,467	1,484	1,497	1,275	1,233	1,202	1,217	1,182	1,118	1,015	979	886	826	771	672	601	542	481	461	360	342	310	197	207	168	446	
Grampian	3,631	3,742	3,812	2,974	2,590	2,687	2,536	2,375	2,120	2,241	2,118	2,128	1,935	1,864	1,812	1,713	1,547	1,455	1,372	1,232	1,141	906	909	784	763	611	418	421	361	1,037	
Greater Glasgow & Clyde	6,432	6,587	6,953	5,494	5,099	5,162	4,855	4,470	4,230	4,227	4,136	4,105	3,878	3,810	3,582	3,144	2,929	2,961	2,724	2,408	2,252	1,876	1,555	1,564	1,274	1,077	891	757	669	1,791	
Highland	2,407	2,374	2,513	1,979	1,976	2,003	1,908	1,786	1,475	1,606	1,448	1,414	1,323	1,248	1,156	1,127	1,020	989	911	822	806	611	564	542	480	419	320	254	246	625	
Lanarkshire	3,320	3,295	3,618	2,783	2,618	2,722	2,612	2,337	2,248	2,248	2,194	2,146	1,890	1,880	1,698	1,613	1,527	1,441	1,281	1,159	1,017	854	824	735	567	536	365	314	268	857	
Lothian	4,547	4,716	4,985	3,750	3,664	3,547	3,295	3,050	2,894	2,846	2,834	2,791	2,607	2,553	2,397	2,237	2,044	1,971	1,919	1,646	1,537	1,344	1,244	1,074	960	813	651	637</			

Table 2 (continued)

FEMALES (continued)

Area	Age																														
	61	62	63	64	65	66	67	68	69	70	71	72	73	74	75	76	77	78	79	80	81	82	83	84	85	86	87	88	89	90+	
SCOTLAND	33,757	34,778	37,835	28,785	27,899	28,284	27,947	25,861	24,389	25,074	24,451	23,903	23,128	22,808	22,003	20,740	19,936	19,815	18,728	17,658	16,413	14,624	13,724	13,235	11,648	10,670	9,240	8,439	7,748	25,955	
Council areas																															
Aberdeen City	1,296	1,234	1,366	1,015	900	894	932	918	825	927	857	832	837	853	800	799	784	819	749	714	695	606	537	515	473	437	387	332	326	892	
Aberdeenshire	1,690	1,705	1,893	1,446	1,320	1,281	1,262	1,230	1,061	1,134	1,045	993	943	962	886	881	807	777	747	709	671	651	554	522	520	506	395	376	316	1,201	
Angus	895	888	1,038	701	719	713	693	624	562	627	578	581	562	539	567	528	457	503	482	410	413	364	363	353	304	290	249	215	195	584	
Argyll & Bute	703	758	919	660	581	593	562	566	537	586	522	495	501	479	472	428	407	429	367	379	328	297	273	296	236	232	159	183	171	600	
Clackmannanshire	356	372	413	281	308	296	293	266	241	226	251	217	256	222	191	151	152	154	152	163	138	113	104	105	89	96	76	74	72	161	
Dumfries & Galloway	1,167	1,180	1,346	1,052	1,059	1,021	1,078	1,002	923	916	901	812	833	817	765	737	727	680	637	634	613	510	513	424	433	369	340	296	248	884	
Dundee City	822	891	1,008	744	737	645	658	677	708	664	682	723	664	681	630	642	621	633	592	547	514	464	417	436	412	381	326	285	223	800	
East Ayrshire	841	902	984	694	737	695	677	663	616	627	544	565	601	538	535	512	494	469	430	412	348	311	288	320	239	223	213	195	182	574	
East Dunbartonshire	778	742	825	640	654	649	614	579	563	549	584	546	550	491	499	492	443	423	410	385	366	341	342	275	282	225	183	201	148	533	
East Lothian	628	709	708	542	538	616	525	502	495	494	458	498	410	446	446	417	382	369	344	358	327	280	284	276	208	205	196	169	174	512	
East Renfrewshire	608	621	672	454	504	520	522	434	444	440	422	455	411	442	425	407	365	409	364	345	322	298	304	269	204	214	176	179	149	493	
Edinburgh, City of	2,630	2,575	2,940	2,162	1,941	2,006	1,973	1,817	1,720	1,791	1,812	1,918	1,751	1,775	1,707	1,640	1,652	1,680	1,617	1,513	1,399	1,338	1,281	1,236	1,042	978	900	838	799	2,569	
Eilean Siar	200	165	222	167	155	164	190	145	180	173	141	143	150	137	126	134	145	117	99	113	113	102	86	89	85	72	69	81	65	191	
Falkirk	1,022	1,031	1,089	822	832	835	819	761	742	719	799	706	675	633	618	560	567	538	525	504	440	377	372	337	344	282	234	193	169	678	
Fife	2,588	2,677	2,876	2,206	2,142	2,238	2,090	1,903	1,701	1,807	1,739	1,620	1,679	1,659	1,509	1,441	1,360	1,273	1,264	1,271	1,089	1,031	993	983	885	785	705	606	567	2,193	
Glasgow City	2,790	2,879	3,050	2,429	2,315	2,327	2,443	2,169	2,232	2,314	2,351	2,314	2,219	2,258	2,478	2,190	2,102	2,201	2,010	1,837	1,742	1,577	1,385	1,362	1,150	998	906	851	789	2,652	
Highland	1,642	1,743	1,720	1,377	1,326	1,395	1,375	1,225	1,192	1,200	1,108	1,125	1,024	1,036	962	882	903	892	835	748	765	681	642	566	517	506	425	398	364	1,180	
Inverclyde	531	568	575	483	450	473	489	391	401	423	408	404	410	404	338	330	349	361	366	320	303	219	245	233	169	154	183	147	127	480	
Midlothian	594	587	678	517	466	481	440	397	395	398	379	386	331	370	341	327	277	310	272	267	237	203	183	176	175	164	135	86	126	358	
Moray	596	626	741	515	552	525	527	499	447	472	427	440	408	386	451	419	375	364	360	276	268	267	253	240	230	195	169	162	115	429	
North Ayrshire	1,016	1,087	1,165	852	831	866	832	841	770	785	666	720	652	643	621	611	591	568	514	470	483	415	328	364	289	265	245	215	239	682	
North Lanarkshire	2,016	2,120	2,108	1,693	1,689	1,774	1,793	1,492	1,460	1,541	1,528	1,527	1,429	1,383	1,285	1,195	1,151	1,038	1,037	983	887	741	696	681	571	536	415	387	371	1,208	
Orkney Islands	133	160	157	126	131	127	143	144	99	139	102	110	103	89	86	83	69	77	82	80	61	55	50	52	47	37	26	37	37	127	
Perth & Kinross	1,058	1,079	1,221	918	952	881	918	895	776	766	809	712	736	719	700	618	565	604	597	559	540	457	517	449	398	405	335	294	224	925	
Renfrewshire	1,145	1,079	1,224	974	948	984	883	853	827	788	859	812	846	782	749	715	630	624	624	582	508	443	398	431	336	306	278	245	199	740	
Scottish Borders	861	918	1,040	769	718	758	767	664	629	642	666	620	602	523	549	504	502	479	468	419	384	367	331	317	303	254	213	218	209	563	
Shetland Islands	143	136	138	116	142	112	138	128	104	104	85	97	94	76	89	75	74	75	56	59	63	72	56	50	59	37	34	48	36	116	
South Ayrshire	836	848	975	772	764	759	743	720	613	669	596	639	613	622	561	553	525	514	509	469	421	378	362	393	318	323	229	218	217	811	
South Lanarkshire	1,996	2,128	2,245	1,736	1,647	1,739	1,714	1,618	1,535	1,557	1,507	1,440	1,421	1,415	1,290	1,275	1,249	1,192	1,139	1,080	1,058	868	803	753	657	607	549	466	403	1,400	
Stirling	557	619	710	499	485	531	473	480	421	441	454	407	419	402	369	343	337	359	306	316	267	252	211	219	241	167	147	158	159	440	
West Dunbartonshire	564	662	648	492	481	509	512	460	426	434	443	387	410	402	379	358	405	370	336	344	287	238	257	226	196	179	161	118	140	447	
West Lothian	1,055	1,089	1,141	931	875	877	869	798	746	721	728	659	588	624	579	493	469	514	438	392	363	308	296	287	236	242	182	168	159	532	
NHS Board areas																															
Ayrshire & Arran	2,693	2,837	3,124	2,318	2,332	2,320	2,252	2,224	1,999	2,081	1,806	1,924	1,866	1,803	1,717	1,676	1,610	1,551	1,453	1,351	1,252	1,104	978	1,077	846	811	687	628	638	2,067	
Borders	861	918	1,040	769	718	758	767	664	629	642	666	620	602	523	549	504	502	479	468	419	384	367	331	317	303	254	213	218	209	563	
Dumfries & Galloway	1,167	1,180	1,346	1,052	1,059	1,021	1,078	1,002	923	916	901	812	833	817	765	737	727	680	637	634	613	510	513	424	433	369	340	296	248	884	
Fife	2,587	2,677	2,873	2,204	2,142	2,237	2,089	1,903	1,701	1,806	1,739	1,620	1,679	1,659	1,509	1,440	1,359	1,273	1,264	1,271	1,089	1,031	992	983	885	784	705	606	567	2,193	
Forth Valley	1,934	2,018	2,212	1,600	1,619	1,661	1,586	1,509	1,404	1,385	1,498	1,327	1,351	1,253	1,176	1,051	1,056	1,051	980	980	843	741	688	662	671	546	457	425	422	1,253	
Grampian	3,582	3,565	4,000	2,976	2,772	2,700	2,721	2,647	2,333	2,533	2,329	2,265	2,188	2,201	2,137	2,099	1,966	1,960	1,856	1,699	1,634	1,524	1,344	1,277	1,223	1,138	951	870	757	2,522	
Greater Glasgow & Clyde	6,923	7,075	7,489	5,900	5,727	5,872	5,831	5,204	5,234	5,294	5,443	5,232	5,177	5,085	5,155	4,801	4,595	4,655	4,369	4,050	3,770	3,322	3,142	2,972	2,493	2,197	2,009	1,851	1,663	5,652	
Highland	2,345	2,501	2,639	2,037	1,907	1,988	1,937	1,791	1,729	1,786	1,630	1,620	1,525	1,515	1,434	1,310	1,310	1,321	1,202	1,127	1,093	978	915	862	753	738	584	581	535	1,780	
Lanarkshire	3,509	3,728	3,863	3,001	2,969	3,107	3,138	2,794	2,656	2,757	2,667	2,657	2,518	2,497	2,291	2,165	2,101	1,963	1,921	1,828	1,705	1,405	1,287	1,260	1,076	1,021	842	744	666	2,342	
Lothian	4,905	4,960	5,463																												

Table 3 Estimated population by sex, five year age group and administrative area: 30 June 2010

PERSONS

Area	Age group																			Area	
	All Ages	0 - 4	5 - 9	10 - 14	15 - 19	20 - 24	25 - 29	30 - 34	35 - 39	40 - 44	45 - 49	50 - 54	55 - 59	60 - 64	65 - 69	70 - 74	75 - 79	80 - 84	85 - 89		90+
SCOTLAND	5,222,100	293,520	270,058	288,043	323,651	361,284	350,622	311,042	335,058	389,694	401,949	366,243	323,955	327,489	254,771	219,086	176,095	122,936	71,417	35,187	SCOTLAND
Council areas																					Council areas
Aberdeen City	217,120	12,059	9,947	9,923	12,766	19,935	19,979	16,647	14,618	14,883	15,062	14,555	12,518	12,123	8,423	7,794	6,848	4,901	2,853	1,286	Aberdeen City
Aberdeenshire	245,780	14,637	13,836	15,069	15,069	13,060	11,999	12,502	16,389	19,997	20,195	18,691	17,245	17,069	12,175	9,922	7,601	5,315	3,364	1,645	Aberdeenshire
Angus	110,570	5,990	5,921	6,363	6,685	5,751	5,182	5,077	6,648	7,864	8,750	8,084	7,600	8,361	6,447	5,452	4,480	3,171	1,867	877	Angus
Argyll & Bute	89,200	3,973	4,165	5,108	5,357	4,900	4,076	3,567	4,995	6,513	7,044	6,700	6,345	7,105	5,749	4,918	3,756	2,636	1,482	811	Argyll & Bute
Clackmannanshire	50,630	3,073	2,766	2,998	3,259	3,150	2,814	2,741	3,243	4,100	4,069	3,533	3,313	3,480	2,638	2,132	1,484	1,041	582	214	Clackmannanshire
Dumfries & Galloway	148,190	7,578	7,098	8,079	8,704	7,606	6,485	6,244	8,024	10,491	11,835	10,884	10,497	11,816	9,763	8,236	6,478	4,582	2,580	1,210	Dumfries & Galloway
Dundee City	144,290	8,190	7,126	7,133	9,736	13,636	11,652	8,887	7,840	8,986	9,968	9,285	7,898	8,302	6,602	6,298	5,283	3,818	2,509	1,141	Dundee City
East Ayrshire	120,240	6,719	6,333	6,610	7,814	7,733	6,582	6,202	7,626	9,490	9,485	8,483	7,668	8,338	6,418	5,357	4,268	2,761	1,580	773	East Ayrshire
East Dunbartonshire	104,580	5,081	5,642	6,593	6,959	6,218	5,360	4,343	5,417	7,549	8,893	8,434	7,143	7,126	5,642	4,984	4,064	2,839	1,543	750	East Dunbartonshire
East Lothian	97,500	5,906	5,509	6,135	6,366	5,590	4,376	4,265	6,351	7,864	8,025	7,173	6,194	6,214	5,134	4,236	3,500	2,541	1,437	684	East Lothian
East Renfrewshire	89,540	4,820	5,495	6,067	6,139	5,309	4,225	3,760	4,770	6,727	7,631	7,131	5,730	5,637	4,399	3,940	3,354	2,420	1,369	617	East Renfrewshire
Edinburgh, City of	486,120	25,574	20,817	21,436	28,033	44,435	51,967	42,588	35,158	33,947	33,128	29,640	25,225	24,779	17,779	16,229	14,255	10,743	6,817	3,570	Edinburgh, City of
Eilean Siar	26,190	1,276	1,312	1,534	1,487	1,138	1,059	1,319	1,560	1,984	2,020	1,952	1,872	2,010	1,601	1,384	1,098	813	527	244	Eilean Siar
Falkirk	153,280	9,374	8,407	8,727	9,811	9,031	8,905	9,258	10,757	12,252	12,065	10,496	9,323	9,717	7,584	6,504	4,948	3,297	1,909	915	Falkirk
Fife	365,020	20,975	19,312	20,196	23,362	26,375	20,894	19,494	22,476	27,391	27,688	25,290	22,783	24,569	19,271	15,765	12,259	8,845	5,240	2,835	Fife
Glasgow City	592,820	34,529	28,464	28,195	35,588	53,285	59,344	49,522	42,456	42,055	42,743	37,901	30,697	27,178	21,279	19,991	17,425	12,021	6,760	3,387	Glasgow City
Highland	221,630	12,139	11,581	12,710	12,781	11,178	11,350	11,498	13,336	16,346	17,806	16,860	16,165	16,202	12,751	10,197	8,024	5,684	3,428	1,594	Highland
Inverclyde	79,770	4,188	4,140	4,555	4,947	5,257	4,735	4,060	4,656	5,893	6,577	5,984	5,182	5,151	4,142	3,601	2,954	2,022	1,111	615	Inverclyde
Midlothian	81,140	4,926	4,518	5,001	5,292	5,008	4,279	4,009	5,006	6,295	6,331	5,974	5,273	5,591	4,194	3,461	2,678	1,787	1,029	488	Midlothian
Moray	87,720	4,879	4,249	5,159	5,685	5,066	4,314	4,273	5,570	6,915	6,981	6,288	5,706	6,040	4,883	4,086	3,468	2,234	1,296	628	Moray
North Ayrshire	135,180	7,469	7,280	7,727	8,746	8,265	7,139	6,572	7,951	9,999	10,426	9,695	8,916	9,681	7,705	6,508	5,036	3,285	1,877	903	North Ayrshire
North Lanarkshire	326,360	20,227	19,121	19,919	20,580	20,976	21,162	19,519	22,113	26,033	25,466	22,687	19,788	19,166	15,225	13,137	9,832	6,450	3,351	1,608	North Lanarkshire
Orkney Islands	20,110	1,054	954	1,167	1,218	989	934	998	1,173	1,589	1,610	1,536	1,434	1,470	1,258	1,039	714	522	292	159	Orkney Islands
Perth & Kinross	147,780	7,355	7,445	8,364	8,859	9,561	9,207	7,072	8,398	10,560	11,380	10,221	9,754	10,497	8,319	7,034	5,731	4,222	2,506	1,295	Perth & Kinross
Renfrewshire	170,250	9,588	9,158	9,528	10,485	11,124	10,900	9,343	10,482	13,467	14,164	12,316	10,690	10,588	8,423	7,268	5,695	3,879	2,093	1,059	Renfrewshire
Scottish Borders	112,870	6,007	6,060	6,443	6,651	5,562	4,727	4,791	6,762	8,860	9,131	8,551	7,814	8,631	6,825	5,808	4,470	3,158	1,856	763	Scottish Borders
Shetland Islands	22,400	1,331	1,246	1,411	1,417	1,163	1,140	1,336	1,504	1,627	1,792	1,559	1,550	1,530	1,228	909	670	498	325	164	Shetland Islands
South Ayrshire	111,440	5,406	5,407	6,009	6,519	6,560	5,693	4,944	6,347	7,736	8,717	8,310	7,794	8,211	6,820	5,833	4,715	3,305	2,030	1,084	South Ayrshire
South Lanarkshire	311,880	17,871	16,763	18,260	19,563	18,995	18,907	17,224	20,218	24,078	24,932	23,323	20,228	19,293	15,367	13,207	10,508	7,263	3,913	1,967	South Lanarkshire
Stirling	89,850	4,649	4,873	5,605	7,009	7,320	4,772	3,906	5,301	6,723	6,890	6,031	5,541	5,835	4,523	3,936	3,030	2,032	1,269	605	Stirling
West Dunbartonshire	90,570	5,363	4,679	5,064	5,712	6,161	6,183	4,892	5,401	6,831	7,197	6,676	5,874	5,627	4,379	3,678	3,061	2,076	1,129	587	West Dunbartonshire
West Lothian	172,080	11,314	10,434	10,955	11,052	10,947	10,281	10,189	12,512	14,649	13,948	12,000	10,195	10,152	7,825	6,242	4,408	2,775	1,493	709	West Lothian
NHS Board areas																					NHS Board areas
Ayrshire & Arran	366,860	19,594	19,020	20,346	23,079	22,558	19,414	17,718	21,924	27,225	28,628	26,488	24,378	26,230	20,943	17,698	14,019	9,351	5,487	2,760	Ayrshire & Arran
Borders	112,870	6,007	6,060	6,443	6,651	5,562	4,727	4,791	6,762	8,860	9,131	8,551	7,814	8,631	6,825	5,808	4,470	3,158	1,856	763	Borders
Dumfries & Galloway	148,190	7,578	7,098	8,079	8,704	7,606	6,485	6,244	8,024	10,491	11,835	10,884	10,497	11,816	9,763	8,236	6,478	4,582	2,580	1,210	Dumfries & Galloway
Fife	364,945	20,975	19,310	20,189	23,357	26,373	20,890	19,493	22,473	27,382	27,680	25,287	22,778	24,559	19,266	15,762	12,255	8,843	5,239	2,834	Fife
Forth Valley	293,386	17,083	16,033	17,324	20,056	19,489	16,476	15,881	19,275	23,048	23,003	20,035	18,143	19,006	14,735	12,548	9,448	6,359	3,745	1,699	Forth Valley
Grampian	550,620	31,575	28,032	30,151	33,520	38,061	36,292	33,422	36,577	41,795	42,238	39,534	35,469	35,232	25,481	21,802	17,917	12,450	7,513	3,559	Grampian
Greater Glasgow & Clyde	1,203,870	68,425	61,824	64,313	74,355	91,965	95,606	80,828	78,582	88,420	93,066	84,064	70,275	65,926	51,684	46,387	38,915	26,911	14,881	7,443	Greater Glasgow & Clyde
Highland	310,830	16,112	15,746	17,818	18,138	16,078	15,426	15,065	18,331	22,859	24,850	23,560	22,510	23,307	18,500	15,115	11,780	8,320	4,910	2,405	Highland
Lanarkshire	562,477	33,292	31,663	33,903	35,645	35,362	35,189	31,833	36,967	44,264	44,604	40,434	35,112	33,881	27,201	23,454	18,001	12,074	6,399	3,199	Lanarkshire
Lothian	836,711	47,689	41,267	43,509	50,742	65,992	70,940	61,071	59,012	62,734	61,391	54,769	46,869	46,723	34,921	30,164	24,838	17,850	10,779	5,451	Lothian
Orkney	20,110	1,054	954	1,167	1,218	989	934	998	1,173	1,589	1,610	1,536	1,434	1,470	1,258	1,039	714	522	292	159	Orkney
Shetland	22,400	1,331	1,246	1,411	1,417	1,163	1,140	1,336	1,504	1,627	1,792	1,559	1,550	1,530	1,228	909	670	498	325	164	Shetland
Tayside	402,641	21,529	20,493	21,856	25,282	28,948	26,044	21,043	22,894	27,416	30,101	27,590	25,254	27,168	21,365						

Table 3 (continued)

MALES

Area	Age group																			Area	
	All Ages	0 - 4	5 - 9	10 - 14	15 - 19	20 - 24	25 - 29	30 - 34	35 - 39	40 - 44	45 - 49	50 - 54	55 - 59	60 - 64	65 - 69	70 - 74	75 - 79	80 - 84	85 - 89		90+
SCOTLAND	2,530,315	149,864	137,912	147,992	165,548	183,869	178,099	156,089	161,215	186,661	192,850	177,390	158,082	159,572	120,391	99,722	74,873	47,282	23,672	9,232	SCOTLAND
Council areas																					Council areas
Aberdeen City	107,500	6,147	5,013	5,263	6,221	9,157	10,606	9,447	7,585	7,498	7,397	7,279	6,394	6,028	3,954	3,488	2,897	1,834	898	394	Aberdeen City
Aberdeenshire	122,031	7,531	7,108	7,863	7,765	6,977	6,175	6,068	7,724	9,852	10,038	9,393	8,586	8,679	6,021	4,845	3,503	2,208	1,251	444	Aberdeenshire
Angus	53,561	2,992	3,016	3,286	3,520	3,011	2,697	2,473	3,131	3,686	4,233	3,901	3,730	4,066	3,136	2,565	1,943	1,268	614	293	Angus
Argyll & Bute	44,170	2,014	2,128	2,609	2,845	2,797	2,307	1,860	2,461	3,218	3,457	3,321	3,094	3,386	2,910	2,335	1,653	1,063	501	211	Argyll & Bute
Clackmannanshire	24,729	1,547	1,440	1,533	1,631	1,694	1,520	1,325	1,536	1,976	2,011	1,693	1,589	1,710	1,234	960	684	418	175	53	Clackmannanshire
Dumfries & Galloway	71,719	3,837	3,667	4,130	4,446	4,036	3,239	2,955	3,793	4,997	5,712	5,183	5,127	5,920	4,680	3,957	2,932	1,888	894	326	Dumfries & Galloway
Dundee City	68,757	4,182	3,687	3,638	4,673	6,560	6,069	4,544	3,681	4,065	4,529	4,431	3,859	3,950	3,177	2,884	2,165	1,440	882	341	Dundee City
East Ayrshire	58,175	3,491	3,209	3,425	3,988	4,000	3,267	2,956	3,712	4,512	4,559	4,053	3,756	4,098	3,030	2,482	1,828	1,082	528	199	East Ayrshire
East Dunbartonshire	50,436	2,613	2,935	3,452	3,660	3,404	2,863	2,162	2,410	3,454	4,162	3,996	3,434	3,396	2,583	2,264	1,797	1,130	504	217	East Dunbartonshire
East Lothian	46,752	3,034	2,788	3,090	3,204	2,904	2,156	1,948	2,993	3,702	3,881	3,496	2,964	2,989	2,458	1,930	1,542	1,016	485	172	East Lothian
East Renfrewshire	42,841	2,462	2,807	3,138	3,186	2,877	2,258	1,795	2,116	3,054	3,570	3,525	2,741	2,730	1,975	1,770	1,384	882	447	124	East Renfrewshire
Edinburgh, City of	235,249	12,983	10,802	11,058	14,194	21,356	25,334	21,728	17,627	16,782	15,953	14,410	12,467	11,855	8,322	7,182	5,959	3,976	2,260	1,001	Edinburgh, City of
Eilean Siar	12,882	679	638	779	783	658	544	624	787	972	1,009	1,000	957	1,050	767	640	477	310	155	53	Eilean Siar
Falkirk	74,376	4,673	4,319	4,522	5,242	4,671	4,303	4,517	5,177	5,903	5,837	5,154	4,442	4,748	3,595	2,972	2,140	1,267	657	237	Falkirk
Fife	176,183	10,748	9,868	10,358	11,785	13,112	10,670	9,391	10,769	13,239	13,329	12,345	11,058	11,829	9,197	7,261	5,412	3,478	1,692	642	Fife
Glasgow City	287,305	17,461	14,511	14,459	18,045	26,862	30,115	26,091	21,467	20,160	20,021	18,036	15,144	13,242	9,793	8,535	6,444	4,118	2,066	735	Glasgow City
Highland	108,735	6,302	5,941	6,621	6,687	6,055	5,799	5,763	6,370	7,793	8,616	8,269	8,004	8,109	6,238	4,704	3,550	2,282	1,218	414	Highland
Inverclyde	38,108	2,211	2,146	2,345	2,546	2,738	2,403	2,033	2,191	2,649	3,145	2,869	2,493	2,471	1,938	1,552	1,210	702	331	135	Inverclyde
Midlothian	38,550	2,536	2,328	2,488	2,704	2,546	2,080	1,835	2,278	2,941	2,882	2,810	2,497	2,668	2,015	1,597	1,151	721	343	130	Midlothian
Moray	44,151	2,574	2,187	2,704	3,045	2,869	2,360	2,278	2,819	3,554	3,534	3,172	2,775	2,941	2,333	1,953	1,499	930	425	199	Moray
North Ayrshire	64,089	3,823	3,688	3,878	4,534	4,291	3,480	3,083	3,605	4,565	4,893	4,564	4,252	4,625	3,565	3,042	2,131	1,225	624	221	North Ayrshire
North Lanarkshire	157,046	10,368	9,753	10,173	10,690	10,659	10,628	9,486	10,468	12,389	12,175	10,721	9,498	9,233	7,017	5,729	4,126	2,462	1,071	400	North Lanarkshire
Orkney Islands	9,908	540	466	642	588	521	483	483	528	813	817	749	732	755	614	496	317	224	108	32	Orkney Islands
Perth & Kinross	72,518	3,742	3,809	4,283	4,674	5,201	5,021	3,707	3,927	4,990	5,538	4,961	4,735	5,174	3,897	3,292	2,647	1,700	850	370	Perth & Kinross
Renfrewshire	81,601	4,927	4,582	4,889	5,364	5,660	5,614	4,569	4,833	6,284	6,756	5,929	5,059	5,108	3,928	3,181	2,353	1,517	729	319	Renfrewshire
Scottish Borders	54,634	3,010	3,102	3,280	3,339	2,833	2,338	2,348	3,153	4,369	4,458	4,091	3,878	4,224	3,289	2,755	1,968	1,340	659	200	Scottish Borders
Shetland Islands	11,348	694	666	700	757	637	623	660	739	824	924	785	783	839	606	453	301	198	111	48	Shetland Islands
South Ayrshire	53,496	2,749	2,750	3,082	3,321	3,434	2,904	2,423	3,031	3,666	4,125	3,985	3,794	3,984	3,221	2,694	2,053	1,282	725	273	South Ayrshire
South Lanarkshire	149,409	9,048	8,447	9,301	10,014	9,879	9,558	8,384	9,459	11,503	11,799	11,177	9,765	9,232	7,114	5,867	4,363	2,701	1,231	567	South Lanarkshire
Stirling	42,911	2,395	2,507	2,884	3,386	3,668	2,432	1,679	2,383	3,049	3,300	3,027	2,711	2,899	2,133	1,813	1,316	767	397	165	Stirling
West Dunbartonshire	43,073	2,744	2,375	2,598	2,985	3,183	3,101	2,331	2,533	3,155	3,370	3,197	2,799	2,697	1,991	1,602	1,213	724	335	140	West Dunbartonshire
West Lothian	84,072	5,807	5,229	5,521	5,726	5,619	5,152	5,143	5,929	7,047	6,820	5,868	4,965	4,937	3,660	2,922	1,915	1,129	506	177	West Lothian
NHS Board areas																					NHS Board areas
Ayrshire & Arran	175,760	10,063	9,647	10,385	11,843	11,725	9,651	8,462	10,348	12,743	13,577	12,602	11,802	12,707	9,816	8,218	6,012	3,589	1,877	693	Ayrshire & Arran
Borders	54,634	3,010	3,102	3,280	3,339	2,833	2,338	2,348	3,153	4,369	4,458	4,091	3,878	4,224	3,289	2,755	1,968	1,340	659	200	Borders
Dumfries & Galloway	71,719	3,837	3,667	4,130	4,446	4,036	3,239	2,955	3,793	4,997	5,712	5,183	5,127	5,920	4,680	3,957	2,932	1,888	894	326	Dumfries & Galloway
Fife	176,148	10,748	9,866	10,355	11,781	13,111	10,668	9,391	10,768	13,238	13,324	12,344	11,055	11,826	9,194	7,259	5,410	3,477	1,692	641	Fife
Forth Valley	141,827	8,609	8,259	8,940	10,246	10,027	8,244	7,509	9,074	10,913	11,132	9,867	8,727	9,341	6,956	5,734	4,134	2,445	1,224	446	Forth Valley
Grampian	273,682	16,252	14,308	15,830	17,031	19,003	19,141	17,793	18,128	20,904	20,969	19,844	17,755	17,648	12,308	10,286	7,899	4,972	2,574	1,037	Grampian
Greater Glasgow & Clyde	579,480	34,880	31,492	33,085	38,046	47,037	48,732	41,277	38,029	41,609	43,707	40,218	34,090	31,852	23,816	20,156	15,340	9,655	4,668	1,791	Greater Glasgow & Clyde
Highland	152,905	8,316	8,069	9,230	9,532	8,852	8,106	7,623	8,831	11,011	12,073	11,590	11,098	11,495	9,148	7,039	5,203	3,345	1,719	625	Highland
Lanarkshire	270,585	16,982	16,081	17,276	18,459	18,225	17,791	15,563	17,466	21,067	21,324	19,249	16,872	16,279	12,537	10,358	7,560	4,589	2,050	857	Lanarkshire
Lothian	404,580	24,343	21,137	22,152	25,828	32,428	34,749	30,674	28,825	30,459	29,522	26,575	22,879	22,442	16,450	13,631	10,568	6,845	3,595	1,478	Lothian
Orkney	9,908	540	466	642	588	521	483	483	528	813	817	749	732	755	614	496	317	224	108	32	Orkney
Shetland	11,348	694	666	700	757	637	623	660	739	824	924	785	783	839	606	453	301	198	111	48	Shetland
Tayside	194,857	10,911	10,514	11,208	12,869	14,776	13,790	10,727	10,746	12,742	14,302	13,293	12,327	13,194	10,210	8,740	6,752	4,405	2,346	1,005	Tayside
Western Isles	12,882	679	638	779	783	658	544	624	787	972	1,009	1,000	957	1,050	767	640	477	310	155	53	Western Isles

Table 3 (continued)

FEMALES

Area	Age group																			Area	
	All Ages	0 - 4	5 - 9	10 - 14	15 - 19	20 - 24	25 - 29	30 - 34	35 - 39	40 - 44	45 - 49	50 - 54	55 - 59	60 - 64	65 - 69	70 - 74	75 - 79	80 - 84	85 - 89		90+
SCOTLAND	2,691,785	143,656	132,146	140,051	158,103	177,415	172,523	154,953	173,843	203,033	209,099	188,853	165,873	167,917	134,380	119,364	101,222	75,654	47,745	25,955	SCOTLAND
Council areas																					Council areas
Aberdeen City	109,620	5,912	4,934	4,660	6,545	10,778	9,373	7,200	7,033	7,385	7,665	7,276	6,124	6,095	4,469	4,306	3,951	3,067	1,955	892	Aberdeen City
Aberdeenshire	123,749	7,106	6,728	7,206	7,304	6,083	5,824	6,434	8,665	10,145	10,157	9,298	8,659	8,390	6,154	5,077	4,098	3,107	2,113	1,201	Aberdeenshire
Angus	57,009	2,998	2,905	3,077	3,165	2,740	2,485	2,604	3,517	4,178	4,517	4,183	3,870	4,295	3,311	2,887	2,537	1,903	1,253	584	Angus
Argyll & Bute	45,030	1,959	2,037	2,499	2,512	2,103	1,769	1,707	2,534	3,295	3,587	3,379	3,251	3,719	2,839	2,583	2,103	1,573	981	600	Argyll & Bute
Clackmannanshire	25,901	1,526	1,326	1,465	1,628	1,456	1,294	1,416	1,707	2,124	2,058	1,840	1,724	1,770	1,404	1,172	800	623	407	161	Clackmannanshire
Dumfries & Galloway	76,471	3,741	3,431	3,949	4,258	3,570	3,246	3,289	4,231	5,494	6,123	5,701	5,370	5,896	5,083	4,279	3,546	2,694	1,686	884	Dumfries & Galloway
Dundee City	75,533	4,008	3,439	3,495	5,063	7,076	5,583	4,343	4,159	4,921	5,439	4,854	4,039	4,352	3,425	3,414	3,118	2,378	1,627	800	Dundee City
East Ayrshire	62,065	3,228	3,124	3,185	3,826	3,733	3,315	3,246	3,914	4,978	4,926	4,430	3,912	4,240	3,388	2,875	2,440	1,679	1,052	574	East Ayrshire
East Dunbartonshire	54,144	2,468	2,707	3,141	3,299	2,814	2,497	2,181	3,007	4,095	4,731	4,438	3,709	3,730	3,059	2,720	2,267	1,709	1,039	533	East Dunbartonshire
East Lothian	50,748	2,872	2,721	3,045	3,162	2,686	2,220	2,317	3,358	4,162	4,144	3,677	3,230	3,225	2,676	2,306	1,958	1,525	952	512	East Lothian
East Renfrewshire	46,699	2,358	2,688	2,929	2,953	2,432	1,967	1,965	2,654	3,673	4,061	3,606	2,989	2,907	2,424	2,170	1,970	1,538	922	493	East Renfrewshire
Edinburgh, City of	250,871	12,591	10,015	10,378	13,839	23,079	26,633	20,860	17,531	17,165	17,175	15,230	12,758	12,924	9,457	9,047	8,296	6,767	4,557	2,569	Edinburgh, City of
Eilean Siar	13,308	597	674	755	704	480	515	695	773	1,012	1,011	952	915	960	834	744	621	503	372	191	Eilean Siar
Falkirk	78,904	4,701	4,088	4,205	4,569	4,360	4,602	4,741	5,580	6,349	6,228	5,342	4,881	4,969	3,989	3,532	2,808	2,030	1,252	678	Falkirk
Fife	188,837	10,227	9,444	9,838	11,577	13,263	10,224	10,103	11,707	14,152	14,359	12,945	11,725	12,740	10,074	8,504	6,847	5,367	3,548	2,193	Fife
Glasgow City	305,515	17,068	13,953	13,736	17,543	26,423	29,229	23,431	20,989	21,895	22,722	19,865	15,553	13,936	11,486	11,456	10,981	7,903	4,694	2,652	Glasgow City
Highland	112,895	5,837	5,640	6,089	6,094	5,123	5,551	5,735	6,966	8,553	9,190	8,591	8,161	8,093	6,513	5,493	4,474	3,402	2,210	1,180	Highland
Inverclyde	41,662	1,977	1,994	2,210	2,401	2,519	2,332	2,027	2,465	3,244	3,432	3,115	2,689	2,680	2,204	2,049	1,744	1,320	780	480	Inverclyde
Midlothian	42,590	2,390	2,190	2,513	2,588	2,462	2,199	2,174	2,728	3,354	3,449	3,164	2,776	2,923	2,179	1,864	1,527	1,066	686	358	Midlothian
Moray	43,569	2,305	2,062	2,455	2,640	2,197	1,954	1,995	2,751	3,361	3,447	3,116	2,931	3,099	2,550	2,133	1,969	1,304	871	429	Moray
North Ayrshire	71,091	3,646	3,592	3,849	4,212	3,974	3,659	3,489	4,346	5,434	5,533	5,131	4,664	5,056	4,140	3,466	2,905	2,060	1,253	682	North Ayrshire
North Lanarkshire	169,314	9,859	9,368	9,746	9,890	10,317	10,534	10,033	11,645	13,644	13,291	11,966	10,290	9,933	8,208	7,408	5,706	3,988	2,280	1,208	North Lanarkshire
Orkney Islands	10,202	514	488	525	630	468	451	515	645	776	793	787	702	715	644	543	397	298	184	127	Orkney Islands
Perth & Kinross	75,262	3,613	3,636	4,081	4,185	4,360	4,186	3,365	4,471	5,570	5,842	5,260	5,019	5,323	4,422	3,742	3,084	2,522	1,656	925	Perth & Kinross
Renfrewshire	88,649	4,661	4,576	4,639	5,121	5,464	5,286	4,774	5,649	7,183	7,408	6,387	5,631	5,480	4,495	4,087	3,342	2,362	1,364	740	Renfrewshire
Scottish Borders	58,236	2,997	2,958	3,163	3,312	2,729	2,389	2,443	3,609	4,491	4,673	4,460	3,936	4,407	3,536	3,053	2,502	1,818	1,197	563	Scottish Borders
Shetland Islands	11,052	637	580	711	660	526	517	676	765	803	868	774	767	691	622	456	369	300	214	116	Shetland Islands
South Ayrshire	57,944	2,657	2,657	2,927	3,198	3,126	2,789	2,521	3,316	4,070	4,592	4,325	4,000	4,227	3,599	3,139	2,662	2,023	1,305	811	South Ayrshire
South Lanarkshire	162,471	8,823	8,316	8,959	9,549	9,116	9,349	8,840	10,759	12,575	13,133	12,146	10,463	10,061	8,253	7,340	6,145	4,562	2,682	1,400	South Lanarkshire
Stirling	46,939	2,254	2,366	2,721	3,623	3,652	2,340	2,227	2,918	3,674	3,590	3,004	2,830	2,936	2,390	2,123	1,714	1,265	872	440	Stirling
West Dunbartonshire	47,497	2,619	2,304	2,466	2,727	2,978	3,082	2,561	2,868	3,676	3,827	3,479	3,075	2,930	2,388	2,076	1,848	1,352	794	447	West Dunbartonshire
West Lothian	88,008	5,507	5,205	5,434	5,326	5,328	5,129	5,046	6,583	7,602	7,128	6,132	5,230	5,215	4,165	3,320	2,493	1,646	987	532	West Lothian
NHS Board areas																					NHS Board areas
Ayrshire & Arran	191,100	9,531	9,373	9,961	11,236	10,833	9,763	9,256	11,576	14,482	15,051	13,886	12,576	13,523	11,127	9,480	8,007	5,762	3,610	2,067	Ayrshire & Arran
Borders	58,236	2,997	2,958	3,163	3,312	2,729	2,389	2,443	3,609	4,491	4,673	4,460	3,936	4,407	3,536	3,053	2,502	1,818	1,197	563	Borders
Dumfries & Galloway	76,471	3,741	3,431	3,949	4,258	3,570	3,246	3,289	4,231	5,494	6,123	5,701	5,370	5,896	5,083	4,279	3,546	2,694	1,686	884	Dumfries & Galloway
Fife	188,797	10,227	9,444	9,834	11,576	13,262	10,222	10,102	11,705	14,144	14,356	12,943	11,723	12,733	10,072	8,503	6,845	5,366	3,547	2,193	Fife
Forth Valley	151,559	8,474	7,774	8,384	9,810	9,462	8,232	8,372	10,201	12,135	11,871	10,168	9,416	9,665	7,779	6,814	5,314	3,914	2,521	1,253	Forth Valley
Grampian	276,938	15,323	13,724	14,321	16,489	19,058	17,151	15,629	18,449	20,891	21,269	19,690	17,714	17,584	13,173	11,516	10,018	7,478	4,939	2,522	Grampian
Greater Glasgow & Clyde	624,390	33,545	30,332	31,228	36,309	44,928	46,874	39,551	40,553	46,811	49,359	43,846	36,185	34,074	27,868	26,231	23,575	17,256	10,213	5,652	Greater Glasgow & Clyde
Highland	157,925	7,967	7,677	8,588	8,606	7,226	7,320	7,442	9,500	11,848	12,777	11,970	11,412	11,812	9,352	8,076	6,577	4,975	3,191	1,780	Highland
Lanarkshire	291,892	16,310	15,582	16,627	17,186	17,137	17,398	16,270	19,501	23,197	23,280	21,185	18,240	17,602	14,664	13,096	10,441	7,485	4,349	2,342	Lanarkshire
Lothian	432,131	23,346	20,130	21,357	24,914	33,564	36,191	30,397	30,187	32,275	31,869	28,194	23,990	24,281	18,471	16,533	14,270	11,005	7,184	3,973	Lothian
Orkney	10,202	514	488	525	630	468	451	515	645	776	793	787	702	715	644	543	397	298	184	127	Orkney
Shetland	11,052	637	580	711	660	526	517	676	765	803	868	774	767	691	622	456	369	300	214	116	Shetland
Tayside	207,784	10,618	9,979	10,648	12,413	14,172	12,254	10,316	12,148	14,674	15,799	14,297	12,927	13,974	11,155	10,040	8,740	6,800	4,538	2,292	Tayside
Western Isles	13,308	597	674	755	704	480	515	695	773	1,012	1,011	952	915	960	834	744	621	503	372	191	Western Isles

Table 4 Components of population change by administrative area: 2009-2010

	Estimated population 30 June 2009	Births	Deaths	Natural change	Estimated ¹ net civilian migration	Other ² changes	Estimated population 30 June 2010	Population change	
								Number	%
SCOTLAND	5,194,000	58,937	53,749	5,188	24,968	-2,056	5,222,100	28,100	0.5
Council areas									
Aberdeen City	213,810	2,597	2,045	552	2,767	-9	217,120	3,310	1.6
Aberdeenshire	243,510	2,833	2,217	616	1,678	-24	245,780	2,270	0.9
Angus	110,250	1,165	1,275	-110	448	-18	110,570	320	0.3
Argyll & Bute	90,040	776	1,086	-310	200	-730	89,200	-840	-0.9
Clackmannanshire	50,540	612	456	156	-59	-7	50,630	90	0.2
Dumfries & Galloway	148,510	1,507	1,840	-333	16	-3	148,190	-320	-0.2
Dundee City	143,390	1,755	1,677	78	822	0	144,290	900	0.6
East Ayrshire	120,210	1,347	1,274	73	-59	16	120,240	30	0.0
East Dunbartonshire	104,680	902	957	-55	-45	0	104,580	-100	-0.1
East Lothian	96,830	1,074	1,008	66	604	0	97,500	670	0.7
East Renfrewshire	89,240	871	853	18	282	0	89,540	300	0.3
Edinburgh, City of	477,660	5,346	4,089	1,257	7,728	-525	486,120	8,460	1.8
Eilean Siar	26,180	217	372	-155	165	0	26,190	10	0.0
Falkirk	152,480	1,926	1,481	445	332	23	153,280	800	0.5
Fife	363,460	4,204	3,731	473	1,622	-535	365,020	1,560	0.4
Glasgow City	588,470	7,607	6,395	1,212	3,198	-60	592,820	4,350	0.7
Highland	220,490	2,394	2,320	74	1,003	63	221,630	1,140	0.5
Inverclyde	80,210	832	1,024	-192	-264	16	79,770	-440	-0.6
Midlothian	80,810	988	763	225	224	-119	81,140	330	0.4
Moray	87,660	944	935	9	152	-101	87,720	60	0.1
North Ayrshire	135,510	1,436	1,507	-71	-259	0	135,180	-330	-0.2
North Lanarkshire	326,320	4,006	3,403	603	-562	-1	326,360	40	0.0
Orkney Islands	19,960	201	203	-2	152	0	20,110	150	0.8
Perth & Kinross	145,910	1,451	1,482	-31	1,977	-76	147,780	1,870	1.3
Renfrewshire	169,910	1,948	2,014	-66	406	0	170,250	340	0.2
Scottish Borders	112,680	1,153	1,254	-101	291	0	112,870	190	0.2
Shetland Islands	22,210	275	231	44	145	1	22,400	190	0.9
South Ayrshire	111,440	1,019	1,380	-361	386	-25	111,440	0	0.0
South Lanarkshire	310,930	3,477	3,229	248	702	0	311,880	950	0.3
Stirling	88,740	884	824	60	1,039	11	89,850	1,110	1.3
West Dunbartonshire	90,920	1,061	1,042	19	-369	0	90,570	-350	-0.4
West Lothian	171,040	2,129	1,382	747	246	47	172,080	1,040	0.6
NHS Board areas									
Ayrshire & Arran	367,160	3,802	4,161	-359	68	-9	366,860	-300	-0.1
Borders	112,680	1,153	1,254	-101	291	0	112,870	190	0.2
Dumfries & Galloway	148,510	1,507	1,840	-333	16	-3	148,190	-320	-0.2
Fife	363,385	4,204	3,731	473	1,622	-535	364,945	1,560	0.4
Forth Valley	291,383	3,420	2,763	657	1,319	27	293,386	2,003	0.7
Grampian	544,980	6,374	5,197	1,177	4,597	-134	550,620	5,640	1.0
Greater Glasgow & Clyde	1,199,026	14,191	13,027	1,164	3,724	-44	1,203,870	4,844	0.4
Highland	310,530	3,170	3,406	-236	1,203	-667	310,830	300	0.1
Lanarkshire	562,215	6,519	5,895	624	-361	-1	562,477	262	0.1
Lothian	826,231	9,533	7,242	2,291	8,786	-597	836,711	10,480	1.3
Orkney	19,960	201	203	-2	152	0	20,110	150	0.8
Shetland	22,210	275	231	44	145	1	22,400	190	0.9
Tayside	399,550	4,371	4,427	-56	3,241	-94	402,641	3,091	0.8
Western Isles	26,180	217	372	-155	165	0	26,190	10	0.0

¹ Includes movements to/from armed forces

² Includes changes in the number of prisoners and armed forces stationed in Scotland.

Table 5 Components of migration by administrative area: 2009-2010

	In-migration				Out-migration				Net-migration			
	Total ²	Within Scotland	Rest of UK ¹	Overseas	Total ²	Within Scotland	Rest of UK ¹	Overseas	Total ³	Within Scotland	Rest of UK ¹	Overseas
SCOTLAND	93,068	n/a	46,968	46,100	68,135	n/a	43,535	24,600	24,933	0	3,433	21,500
Council areas												
Aberdeen City	13,874	5,517	2,712	5,645	11,106	6,910	2,373	1,823	2,768	-1,393	339	3,822
Aberdeenshire	9,091	5,864	1,678	1,549	7,416	4,726	1,806	884	1,675	1,138	-128	665
Angus	3,790	2,567	677	546	3,343	2,378	631	334	447	189	46	212
Argyll & Bute	4,044	2,185	1,392	467	3,849	2,291	1,072	486	195	-106	320	-19
Clackmannanshire	1,581	1,111	323	147	1,645	1,215	280	150	-64	-104	43	-3
Dumfries & Galloway	3,972	1,621	1,987	364	3,961	1,722	1,645	594	11	-101	342	-230
Dundee City	7,085	3,491	1,465	2,129	6,267	3,815	1,521	931	818	-324	-56	1,198
East Ayrshire	3,095	2,269	680	146	3,153	2,215	660	278	-58	54	20	-132
East Dunbartonshire	3,066	2,527	394	145	3,117	2,347	563	207	-51	180	-169	-62
East Lothian	3,774	2,616	732	426	3,170	2,239	656	275	604	377	76	151
East Renfrewshire	3,130	2,561	383	186	2,853	2,199	449	205	277	362	-66	-19
Edinburgh, City of	31,096	10,817	8,803	11,476	23,368	11,195	7,710	4,463	7,728	-378	1,093	7,013
Eilean Siar	983	601	314	68	822	574	166	82	161	27	148	-14
Falkirk	3,592	2,505	650	437	3,258	2,262	650	346	334	243	0	91
Fife	11,499	5,751	3,145	2,603	9,877	5,219	3,082	1,576	1,622	532	63	1,027
Glasgow City ⁴	29,125	13,446	5,730	9,949	25,924	15,248	6,231	4,445	3,201	-1,802	-501	5,504
Highland	7,949	3,911	2,766	1,272	6,948	3,984	2,026	938	1,001	-73	740	334
Inverclyde	1,421	903	332	186	1,682	1,058	421	203	-261	-155	-89	-17
Midlothian	2,653	2,045	410	198	2,426	1,753	492	181	227	292	-82	17
Moray	3,370	1,563	1,363	444	3,214	1,638	1,109	467	156	-75	254	-23
North Ayrshire	3,536	2,422	885	229	3,799	2,606	819	374	-263	-184	66	-145
North Lanarkshire	6,199	4,381	1,068	750	6,764	4,708	1,221	835	-565	-327	-153	-85
Orkney Islands	807	430	316	61	658	415	169	74	149	15	147	-13
Perth & Kinross	6,970	3,471	1,430	2,069	4,996	3,031	1,158	807	1,974	440	272	1,262
Renfrewshire	4,859	3,245	798	816	4,450	3,143	762	545	409	102	36	271
Scottish Borders	4,159	2,233	1,543	383	3,870	2,091	1,294	485	289	142	249	-102
Shetland Islands	761	300	362	99	615	339	188	88	146	-39	174	11
South Ayrshire	3,561	2,261	983	317	3,171	2,068	687	416	390	193	296	-99
South Lanarkshire	7,923	5,850	1,412	661	7,223	4,922	1,490	811	700	928	-78	-150
Stirling	5,246	3,076	952	1,218	4,209	2,746	863	600	1,037	330	89	618
West Dunbartonshire	2,092	1,510	390	192	2,462	1,794	465	203	-370	-284	-75	-11
West Lothian	4,897	3,082	893	922	4,651	3,281	876	494	246	-199	17	428
NHS Board areas												
Ayrshire & Arran	7,812	4,572	2,548	692	7,743	4,509	2,166	1,068	69	63	382	-376
Borders	4,159	2,233	1,543	383	3,870	2,091	1,294	485	289	142	249	-102
Dumfries & Galloway	3,972	1,621	1,987	364	3,961	1,722	1,645	594	11	-101	342	-230
Fife	11,499	5,751	3,145	2,603	9,877	5,219	3,082	1,576	1,622	532	63	1,027
Forth Valley	9,002	5,281	1,918	1,803	7,688	4,795	1,795	1,098	1,314	486	123	705
Grampian	19,674	6,283	5,753	7,638	15,075	6,613	5,288	3,174	4,599	-330	465	4,464
Greater Glasgow & Clyde ⁴	33,798	13,890	8,329	11,579	30,078	14,958	9,200	5,920	3,720	-1,068	-871	5,659
Highland	11,679	5,782	4,158	1,739	10,483	5,961	3,098	1,424	1,196	-179	1,060	315
Lanarkshire	10,414	6,924	2,184	1,306	10,779	6,843	2,402	1,534	-365	81	-218	-228
Lothian	35,286	11,425	10,839	13,022	26,497	11,350	9,734	5,413	8,789	75	1,105	7,609
Orkney	807	430	316	61	658	415	169	74	149	15	147	-13
Shetland	761	300	362	99	615	339	188	88	146	-39	174	11
Tayside	14,802	6,487	3,572	4,743	11,569	6,191	3,308	2,070	3,233	296	264	2,673
Western Isles	983	601	314	68	822	574	166	82	161	27	148	-14

¹ The number of moves between Scotland and the rest of the UK shown here differ from those quoted elsewhere.

This is because movements to/from the armed forces are included in these figures but are excluded from the others.

² The total in- and out-migration figures for Scotland equal the sum of migration from / to the rest of the UK and overseas. However, they do not equal the sum of moves for individual Council or NHS Board areas. Migration for individual Council and NHS Board areas includes people moving within Scotland. Since such moves do not involve anyone leaving or entering Scotland, they are not counted in the Scotland totals.

³ Figures in this column have not been rounded and so may differ slightly from those in table 4.

⁴ Includes asylum seekers

Table 6 Components of population change by administrative area: 2000-2010

	Estimated population 30 June 2000	Births	Deaths	Natural change	Estimated ¹ net civilian migration and other changes	Estimated population 30 June 2010	Population change	
							Number	%
SCOTLAND	5,062,940	552,748	561,062	-8,314	167,474	5,222,100	159,160	3.1
Council areas								
Aberdeen City	213,340	22,442	21,407	1,035	2,745	217,120	3,780	1.8
Aberdeenshire	227,020	25,228	21,450	3,778	14,982	245,780	18,760	8.3
Angus	108,850	11,077	12,962	-1,885	3,605	110,570	1,720	1.6
Argyll & Bute	91,050	7,747	11,180	-3,433	1,583	89,200	-1,850	-2.0
Clackmannanshire	48,170	5,481	5,036	445	2,015	50,630	2,460	5.1
Dumfries & Galloway	147,540	14,093	18,230	-4,137	4,787	148,190	650	0.4
Dundee City	146,610	15,902	17,413	-1,511	-809	144,290	-2,320	-1.6
East Ayrshire	120,120	12,762	14,081	-1,319	1,439	120,240	120	0.1
East Dunbartonshire	108,620	9,339	9,742	-403	-3,637	104,580	-4,040	-3.7
East Lothian	89,910	10,241	10,198	43	7,547	97,500	7,590	8.4
East Renfrewshire	89,040	8,924	8,543	381	119	89,540	500	0.6
Edinburgh, City of	448,430	48,636	44,038	4,598	33,092	486,120	37,690	8.4
Eilean Siar	26,790	2,405	3,689	-1,284	684	26,190	-600	-2.2
Falkirk	144,650	17,283	16,019	1,264	7,366	153,280	8,630	6.0
Fife	348,340	38,830	38,485	345	16,335	365,020	16,680	4.8
Glasgow City	577,020	68,754	71,632	-2,878	18,678	592,820	15,800	2.7
Highland	209,130	22,298	23,550	-1,252	13,752	221,630	12,500	6.0
Inverclyde	84,660	8,456	10,583	-2,127	-2,763	79,770	-4,890	-5.8
Midlothian	81,110	9,052	8,212	840	-810	81,140	30	0.0
Moray	86,720	9,047	9,398	-351	1,351	87,720	1,000	1.2
North Ayrshire	136,360	14,376	16,123	-1,747	567	135,180	-1,180	-0.9
North Lanarkshire	321,390	39,182	34,421	4,761	209	326,360	4,970	1.6
Orkney Islands	19,290	1,849	2,163	-314	1,134	20,110	820	4.3
Perth & Kinross	134,970	13,501	15,712	-2,211	15,021	147,780	12,810	9.5
Renfrewshire	173,680	18,750	19,948	-1,198	-2,232	170,250	-3,430	-2.0
Scottish Borders	106,250	10,911	13,081	-2,170	8,790	112,870	6,620	6.2
Shetland Islands	22,180	2,456	2,078	378	-158	22,400	220	1.0
South Ayrshire	112,290	10,175	14,175	-4,000	3,150	111,440	-850	-0.8
South Lanarkshire	302,270	33,377	33,199	178	9,432	311,880	9,610	3.2
Stirling	86,160	8,746	8,725	21	3,669	89,850	3,690	4.3
West Dunbartonshire	93,930	10,236	11,251	-1,015	-2,345	90,570	-3,360	-3.6
West Lothian	157,050	21,192	14,338	6,854	8,176	172,080	15,030	9.6
NHS Board areas								
Ayrshire & Arran	368,770	37,313	44,379	-7,066	5,156	366,860	-1,910	-0.5
Borders	106,250	10,908	13,079	-2,171	8,791	112,870	6,620	6.2
Dumfries & Galloway	147,540	14,093	18,230	-4,137	4,787	148,190	650	0.4
Fife	348,340	38,830	38,485	345	16,260	364,945	16,605	4.8
Forth Valley	278,980	31,503	29,844	1,659	12,747	293,386	14,406	5.2
Grampian	527,080	56,717	52,255	4,462	19,078	550,620	23,540	4.5
Greater Glasgow & Clyde	1,197,200	133,381	139,888	-6,507	13,177	1,203,870	6,670	0.6
Highland	300,180	30,045	34,730	-4,685	15,335	310,830	10,650	3.6
Lanarkshire	553,410	63,680	59,449	4,231	4,836	562,477	9,067	1.6
Lothian	776,500	89,100	76,790	12,310	47,901	836,711	60,211	7.8
Orkney	19,290	1,849	2,163	-314	1,134	20,110	820	4.3
Shetland	22,180	2,456	2,078	378	-158	22,400	220	1.0
Tayside	390,430	40,468	46,003	-5,535	17,746	402,641	12,211	3.1
Western Isles	26,790	2,405	3,689	-1,284	684	26,190	-600	-2.2

¹ Includes movements to/from armed forces and changes in the number of armed forces stationed in Scotland.

Table 7 Age and sex structure of administrative areas: 30 June 2010

	Persons				Males				Females				Sex Ratio ²
	Median age	% under 16	% working age	% pension - able age ¹	Median age	% under 16	% working age	% pension - able age ¹	Median age	% under 16	% working age	% pension - able age ¹	
SCOTLAND	41	17	63	20	39	18	67	15	42	17	59	25	0.94
Council areas													
Aberdeen City	37	16	67	18	36	16	71	13	38	15	63	22	0.98
Aberdeenshire	42	19	61	20	41	20	65	15	43	18	58	24	0.99
Angus	44	18	58	24	43	19	63	18	45	17	54	29	0.94
Argyll & Bute	46	16	58	26	44	17	64	20	47	15	53	32	0.98
Clackmannanshire	41	19	62	19	40	20	66	14	42	18	58	24	0.95
Dumfries & Galloway	46	17	57	26	45	17	62	20	47	16	53	31	0.94
Dundee City	38	17	63	21	36	18	66	16	40	15	59	25	0.91
East Ayrshire	42	18	61	21	41	19	66	16	43	16	58	26	0.94
East Dunbartonshire	44	18	60	22	42	19	64	17	45	17	56	28	0.93
East Lothian	42	19	60	21	41	20	63	16	43	18	56	26	0.92
East Renfrewshire	43	20	59	21	41	21	63	15	44	18	55	26	0.92
Edinburgh, City of	36	15	68	17	35	16	72	12	37	14	65	21	0.94
Eilean Siar	46	17	58	25	44	17	64	19	47	16	52	32	0.97
Falkirk	41	18	62	20	39	19	66	15	42	18	58	24	0.94
Fife	41	18	61	21	40	19	65	16	42	17	57	26	0.93
Glasgow City	35	16	68	16	34	17	72	11	37	16	64	21	0.94
Highland	44	18	60	22	43	19	64	17	45	17	56	28	0.96
Inverclyde	42	17	61	21	40	19	66	15	44	16	57	27	0.91
Midlothian	42	19	61	20	40	20	64	15	43	18	57	25	0.91
Moray	43	18	60	22	41	18	65	17	45	17	55	28	1.01
North Ayrshire	43	18	60	22	41	19	64	17	44	17	56	27	0.90
North Lanarkshire	39	19	62	18	38	21	66	13	41	18	59	23	0.93
Orkney Islands	44	17	60	23	44	18	64	18	45	16	55	28	0.97
Perth & Kinross	43	17	60	23	42	18	65	18	45	16	55	29	0.96
Renfrewshire	41	18	62	20	40	19	66	15	42	17	59	24	0.92
Scottish Borders	45	18	58	24	44	18	63	19	46	17	54	29	0.94
Shetland Islands	42	19	61	20	41	19	65	15	42	19	56	25	1.03
South Ayrshire	45	16	59	25	44	17	64	19	46	15	54	30	0.92
South Lanarkshire	41	18	62	20	40	19	66	15	43	17	58	25	0.92
Stirling	41	18	62	20	40	19	65	15	41	17	58	25	0.91
West Dunbartonshire	41	18	63	20	39	19	67	14	42	17	59	25	0.91
West Lothian	39	20	63	17	38	21	67	12	40	20	60	21	0.96
NHS Board areas													
Ayrshire & Arran	43	17	60	23	42	18	64	17	44	16	56	28	0.92
Borders	45	18	58	24	44	18	63	19	46	17	54	29	0.94
Dumfries & Galloway	46	17	57	26	45	17	62	20	47	16	53	31	0.94
Fife	41	18	61	21	40	19	65	16	42	17	57	26	0.93
Forth Valley	41	18	62	20	40	19	66	15	42	17	58	24	0.94
Grampian	40	17	63	19	39	18	68	14	42	17	59	24	0.99
Greater Glasgow & Clyde	39	17	65	18	37	18	69	13	40	16	61	23	0.93
Highland	44	17	60	23	43	18	64	18	46	16	55	29	0.97
Lanarkshire	40	19	62	19	39	20	66	14	42	18	58	24	0.93
Lothian	38	17	65	18	36	18	69	13	39	16	62	22	0.94
Orkney	44	17	60	23	44	18	64	18	45	16	55	28	0.97
Shetland	42	19	61	20	41	19	65	15	42	19	56	25	1.03
Tayside	42	17	61	22	40	18	65	17	43	16	56	27	0.94
Western Isles	46	17	58	25	44	17	64	19	47	16	52	32	0.97

¹ Pensionable age at 30 June 2010 was 65 for men and approximately 60.15 for women.

² The sex ratio is the male population divided by the female population.

Table 8 Rest of UK/Overseas moves by age group: 2009-2010

Movements between Scotland and the rest of the UK¹

	0-15		16-24		25-34		35-44		45-54		55-64		65-74		75-84		85+		All ages	
	N	%	N	%	N	%	N	%	N	%	N	%	N	%	N	%	N	%	N	%
IN	6,300	14	11,581	26	10,767	24	6,624	15	4,247	9	3,081	7	1,328	3	669	1	410	1	45,007	100
OUT	6,245	15	9,793	23	12,042	29	5,945	14	3,437	8	2,220	5	1,145	3	599	1	306	1	41,732	100
NET	55		1,788		-1,275		679		810		861		183		70		104		3,275	

Movements between Scotland and Overseas (including asylum seekers)²

	0-15		16-24		25-34		35-44		45-54		55-64		65-74		75-84		85+		All ages	
	N	%	N	%	N	%	N	%	N	%	N	%	N	%	N	%	N	%	N	%
IN	6,106	13	17,228	37	15,230	33	4,199	9	1,834	4	874	2	410	1	169	0	50	0	46,100	100
OUT	3,630	15	5,755	23	7,234	29	3,570	15	2,001	8	1,259	5	638	3	338	1	175	1	24,600	100
NET	2,476		11,473		7,996		629		-167		-385		-228		-169		-125		21,500	

Total net migration (including asylum seekers and rounding)³

NET	0-15		16-24		25-34		35-44		45-54		55-64		65-74		75-84		85+		All ages	
	N	%	N	%	N	%	N	%	N	%	N	%	N	%	N	%	N	%	N	%
	2,702		12,942		6,795		1,457		696		523		-38		-93		-16		24,968	

Age distribution of the mid-2010 resident population of Scotland

Total	0-15		16-24		25-34		35-44		45-54		55-64		65-74		75-84		85+		All ages	
	N	%	N	%	N	%	N	%	N	%	N	%	N	%	N	%	N	%	N	%
	911,794	17	624,762	12	661,664	13	724,752	14	768,192	15	651,444	12	473,857	9	299,031	6	106,604	2	5,222,100	100

¹ National Health Service Central Register (NHSCR) patient movements mid-2009 to mid-2010.

² Totals are based primarily on International Passenger Survey (IPS) data. However, the sample size in Scotland is too small to give an age breakdown so an age distribution is assumed using NHSCR data.

³ Note that the movements between Scotland and the rest of the UK and overseas will not sum to the total net migration as they exclude movements to and from the armed forces and rounding adjustments.

Table 9 Land area and population density by administrative area: 30 June 2010

	Estimated population 30 June 2010	Area ¹ (sq km)	Density ² (Persons per sq km)
SCOTLAND	5,222,100	77,925	67
Council areas			
Aberdeen City	217,120	186	1,169
Aberdeenshire	245,780	6,313	39
Angus	110,570	2,182	51
Argyll & Bute	89,200	6,909	13
Clackmannanshire	50,630	159	319
Dumfries & Galloway	148,190	6,426	23
Dundee City	144,290	60	2,412
East Ayrshire	120,240	1,262	95
East Dunbartonshire	104,580	175	599
East Lothian	97,500	679	144
East Renfrewshire	89,540	174	515
Edinburgh, City of	486,120	264	1,843
Eilean Siar	26,190	3,071	9
Falkirk	153,280	297	515
Fife	365,020	1,325	276
Glasgow City	592,820	175	3,378
Highland	221,630	25,659	9
Inverclyde	79,770	160	497
Midlothian	81,140	354	229
Moray	87,720	2,238	39
North Ayrshire	135,180	885	153
North Lanarkshire	326,360	470	695
Orkney Islands	20,110	990	20
Perth & Kinross	147,780	5,286	28
Renfrewshire	170,250	261	652
Scottish Borders	112,870	4,732	24
Shetland Islands	22,400	1,466	15
South Ayrshire	111,440	1,222	91
South Lanarkshire	311,880	1,772	176
Stirling	89,850	2,187	41
West Dunbartonshire	90,570	159	570
West Lothian	172,080	427	403
NHS Board areas			
Ayrshire & Arran	366,860	3,377	109
Borders	112,870	4,732	24
Dumfries & Galloway	148,190	6,426	23
Fife	364,945	1,325	275
Forth Valley	293,386	2,633	111
Grampian	550,620	8,736	63
Greater Glasgow & Clyde	1,203,870	1,151	1,046
Highland	310,830	32,568	10
Lanarkshire	562,477	2,181	258
Lothian	836,711	1,760	475
Orkney	20,110	990	20
Shetland	22,400	1,466	15
Tayside	402,641	7,508	54
Western Isles	26,190	3,071	9

¹ Figures may not add exactly because of rounding.

² Persons per sq km has been calculated using actual, not rounded areas.

6. Notes and Definitions

Population Covered

The estimated population of an area includes all those usually resident there, whatever their nationality. Students are treated as being resident at their term-time address. Members of UK and non-UK armed forces stationed in Scotland are included; UK forces stationed outside Scotland are excluded. Short-term international migrants, who stay for less than 12 months, are excluded.

Age

Population figures relate to 30 June of the year shown and ages relate to age at last birthday.

Presentation of Results

Although the populations are tabulated in units, this does not imply accuracy to that level. The data are presented in units for the convenience of users wishing to compile non-standard aggregations without encountering rounding problems.

Administrative Areas

The composition of the NHS Board areas in terms of Council areas is summarised in the table below. From 1 April 2006 responsibility for NHS Argyll & Clyde was split between NHS Greater Glasgow (now known as Greater Glasgow and Clyde) and NHS Highland. The tables presented in this report present information for the new NHS Board areas for all years.

Composition of NHS Board areas

NHS Board area	Council area
Ayrshire & Arran	East Ayrshire, North Ayrshire, South Ayrshire
Borders	Scottish Borders
Dumfries & Galloway	Dumfries & Galloway
Fife	Fife
Forth Valley	Clackmannanshire, Falkirk (part), Stirling (part), Perth & Kinross (part)
Grampian	Aberdeen City, Aberdeenshire, Moray
Greater Glasgow & Clyde ¹	East Dunbartonshire, East Renfrewshire, Glasgow City, Inverclyde, North Lanarkshire (part), Renfrewshire, South Lanarkshire (part), Stirling (part), West Dunbartonshire
Highland ¹	Highland, Argyll & Bute
Lanarkshire	North Lanarkshire (part), South Lanarkshire (part), West Lothian (part), Falkirk (part)
Lothian	East Lothian, City of Edinburgh, Midlothian, West Lothian (part), Falkirk (part)
Orkney	Orkney Islands
Shetland	Shetland Islands
Tayside	Angus, Dundee City, Perth & Kinross (part)
Western Isles	Eilean Siar

¹ New NHS Board areas including parts of former Argyll & Clyde.

Note: In practice there are some other very small "slivers" where NHS Board and Council area boundaries cross.

Land Area

The land areas used to calculate the population density information presented in [Table 9](#) were derived from digital boundaries used for the 2001 Census.

Sources of migration data

Migration is the most difficult component of population change to estimate, as there is no comprehensive system which registers migration in the UK, either moves to or from the rest of the world, or moves within the UK. Estimates of migration have therefore to be based on survey data and the best proxy data that exist.

Migration estimates are derived from the following key sources of data. The National Health Service Central Register (NHSCR) is used to calculate moves between NHS Board areas within the UK, with migration at Council area and below estimated using anonymised data from the Community Health Index (CHI) supplied with the permission of the Scottish Directors of Public Health. The International Passenger Survey (IPS) provides information on moves into and out of Scotland with an origin or destination of outside the UK. In addition to IPS data, additional information is used for asylum seekers. These three main sources are described in more detail in the remainder of this section.

More information on the methodology used to estimate migration can be found in the migration section of this website:

<http://www.gro-scotland.gov.uk/statistics/theme/migration/methodology.html>

and in the Mid-Year Population Estimates for Scotland Methodology Guide:

<http://www.gro-scotland.gov.uk/statistics/theme/population/estimates/mid-year/index.html>

Internal migration within the UK

The NHSCR system records the movements of patients between NHS Board areas in the UK. Each time a patient transfers to a new NHS doctor in a different NHS Board area, the NHSCR is notified and the patient is then considered to have made a migrant move. Counts of these re-registrations are used as a proxy indicator for moves within the UK.

The CHI holds records of people registered with an NHS doctor in Scotland. The records used in production of the mid-year population estimates contain the postcode of the patient's address, which enables migration to be estimated for councils, and for smaller areas. The approach used for estimating council-level migration involves matching CHI patient records extracted from a database which reflects the 'live' CHI system on two occasions one year apart.

Currently, migration data derived from the NHSCR is considered to be the most reliable data available at NHS Board level, so estimates from the CHI are controlled to ensure that they are consistent with the NHSCR data for moves across a NHS Board boundary by origin, destination, age and sex.

Due to an improvement in data sources, the accuracy of cross border migration data between Scotland and Northern Ireland was improved from mid-2009. More information on the nature of the improvements is contained in the papers from the May 2010 meeting of the Population and Migration Statistics Committee (PAMS), available on this website:

<http://www.gro-scotland.gov.uk/statistics/user-consultation-groups-seminars/pams/pams-17-may-2010.html>

The use of patients' postcode information held on the NHSCR is currently being investigated. This may ultimately replace use of the CHI.

International migration

An international migrant is defined by the United Nations (UN) as someone who changes country of residence for 12 months or more. There is no single, all-inclusive system in place to measure all movements of population into and out of the UK. Therefore, it is necessary to use a combination of data from different sources that have different characteristics and attributes in order to produce estimates of international migration. While offering the best data currently available, none of the data sources used is specifically designed to capture information solely on international migration.

Three sources of data are used to compile the national estimates of international migration into Scotland:

- The International Passenger Survey (IPS) is a continuous sample survey conducted by the Office for National Statistics (ONS) at the principal air, sea and Channel Tunnel routes between the United Kingdom and countries outside the British Isles. It is the prime source of migration data to and from the UK, providing estimates of both inflows and outflows, but does not cover all migration types;
- Home Office (HO), which provides data on asylum seekers and their dependants;
- The Labour Force Survey (LFS), which collects information on where international migrants live.

Fundamental changes were introduced to the IPS sample design at the beginning of 2009 to make the survey more focused on identifying migrants. These changes included a re-organisation of the times and frequency of sampling of travellers, sampling at additional locations including Aberdeen and improvements to the IPS weighting methodology.

Given that the IPS collects information on intentions which may or may not be realised, an adjustment is made to the IPS data for visitor and migrant switchers (people who change their intentions and their migratory status). The Long-Term International Migration (LTIM) estimate (previously referred to as Total International Migration, TIM) is derived by combining these components.

The IPS provides an estimate of international migrants into the United Kingdom. The allocation of these migrants to Scotland is based on the LFS. The LFS provides more reliable data on the geographical distribution of immigrants than the destination provided in the IPS as it is based on where migrants actually live rather than on their initial intentions. The outflow of international migrants from Scotland is based directly on the IPS data. More information on the LTIM method can be found in the Office for National Statistics (ONS) website:

<http://www.statistics.gov.uk/StatBase/Product.asp?vlnk=507>

The LTIM estimate for Scotland has been used in the mid-year estimates for Scotland since mid 2007. Previously, a similar method based on the IPS was used, but this did not use the LFS distribution or include estimates of migrant switchers. It did however use an adjustment for unmeasured migration. The results of the 2001 Census indicated that the previously published 2000 mid-year estimates had been overestimated as a result of cumulative errors in estimating migration. To ensure that migration estimates did not continue to be overestimated, an unmeasured migration adjustment was included. The LTIM methodology does not include this adjustment. Rather the assumption is that, since

the census and estimates are calculated using different methodologies, differences inevitably arise. An evaluation of the impact of changing method has been carried out. The conclusion was that the previous method estimated a cumulative net migration gain around 9,700 higher than the TIM method between the census and the 2006 estimates. As this is not considered substantial, there are currently no plans to revise the previous mid-year estimates due to this change.

Distribution of International Migrants to Scotland

International migration flows to NHS Boards were allocated by using overseas inflows recorded on the NHSCR. However, NHSCR records hold limited data on international outflows from NHS Boards to overseas, as patients rarely de-register with their doctor when moving overseas. As a result international outflows were allocated using averaged proportions based on international inflows, outflows to the rest of the UK and the population size of each NHS Board.

Age and sex distributions of international in-migrants are obtained directly from the NHSCR. The age/sex distribution of moves for international out-migrants was based on the distribution of migrants to the rest of the UK, as recorded by the NHSCR.

The distribution of migrants to Council areas is based on records from the Community Health Index (CHI), which are made consistent with the NHSCR geographic and age/sex distributions. International in-migrants were allocated using records appearing on the CHI extract where the patient had arrived from overseas. Like the NHSCR, the CHI extract holds limited data on people leaving Scotland for overseas and so international out-migrants were allocated using a combination of in-migrants to Scotland from overseas and migrants leaving Scotland for the rest of the UK.

Work to improve the method used to allocate international out-migrants to NHS Board and Council areas is continuing and further improvements will be considered for future publications.

Additional Migration Data

This website now includes a migration section which provides additional tables showing migration estimates associated with mid-year population estimates. This data will be updated in the summer of 2011 and can be accessed through the following link:

<http://www.gro-scotland.gov.uk/statistics/theme/migration/index.html>

Research into improving Migration and Population Statistics

It is increasingly important to have high quality statistics on migration and the population, for policy development and for planning and providing public services. Achieving this aim is challenging in the context of increasingly complex lifestyles and changes in migration to and from the UK over the last decade.

It was in this context that the National Statistician set up the Inter-Departmental Task Force on Migration Statistics to make recommendations on timely improvements that could be made to estimates of migration and migrant populations in the United Kingdom, both nationally and at a local level. The report of the Inter-Departmental Task Force on Migration Statistics was published on 15 December 2006 by the ONS. We represented the devolved administrations on this task force, and are working with the ONS on the implementation of the recommendations through the Improvements to Migration and Population Statistics (IMPS) cross-government programme.

The Migration Statistics Improvement Programme (MSIP) was initiated in April 2008, with a vision for producing improved population and migration statistics that are relevant for user needs, are as accurate as possible, and are recognised as being definitive estimates. More information on the MSIP can be found at the following link:

www.ons.gov.uk/about-statistics/methodology-and-quality/imps/index.html

Phase 1 of the Programme was completed in May 2010 with the delivery of improvements to England and Wales mid-year population estimates, which use a slightly different methodology and different sources than the mid-year estimates produced for Scotland. Phase 2 of the MSIP will run until March 2012. The programme will then be evaluated once results of the 2011 Census become available. Phase 2 consists of three key work streams:

- i) Reconciling Administrative Sources and Population Estimates
- ii) Improving Migrant Distribution
- iii) Statistical Benefits of e-Borders

The MSIP update of August 2010 provides more detail on the nature of each work stream. A link to this document can be found here:

<http://www.ons.gov.uk/about-statistics/methodology-and-quality/imps/updates-reports/historical-updates-reports/updates-and-reports-from-2010/migration-statistics-improvement-work-programme-update---august-2010.pdf>

and further updates will be posted on the ONS website.

We are involved in the work streams within this programme with the aim of incorporating the research into our outputs. More details can be found on this website:

<http://www.gro-scotland.gov.uk/statistics/theme/migration/mig-stats/improvements.html>

Publication of future population estimates following the 2011 Census

The mid-2011 population estimates will be published later than usual to allow the estimates to be based on the results of the 2011 Census. We also plan to use the 2011 Census results to revise current population estimates.

7. Notes on Statistical Publications

National Statistics

This is a National Statistics publication. It has been produced to the high professional standards set out in the UK Statistics Authority Code of Practice for Official Statistics (<http://www.statisticsauthority.gov.uk/assessment/code-of-practice/index.html>). These statistics undergo regular quality assurance reviews to ensure that they meet customer needs. They are produced free from any political interference.

National Records of Scotland

From 1 April 2011, the General Register Office for Scotland merged with the National Archives of Scotland to become the National Records of Scotland (NRS). The GROS website will remain active until it is replaced in due course by a new website for NRS.

The National Records of Scotland is a non-ministerial department of the devolved Scottish Administration. Our aim is to provide relevant and reliable information, analysis and advice that meet the needs of government, business and the people of Scotland. We do this by:

Preserving the Past – We look after Scotland’s national archives so that they are available for current and future generations, and we make available important information for family history.

Recording the Present – At our network of local offices, we register births, marriages, civil partnerships, deaths, divorces and adoptions in Scotland.

Informing the Future – We are responsible for the Census of Population in Scotland which we use, with other sources of information, to produce population and household statistics.

Further detailed statistics produced by NRS are available from the Statistics section on the GROS website (<http://www.gro-scotland.gov.uk/statistics/index.html>). Statistics from the 2001 Census are on Scotland’s Census Results On-Line website (<http://www.scrol.gov.uk>) and on the Census section of the GROS website (<http://www.gro-scotland.gov.uk/census/index.html>).

Information about future publications is provided on the GROS website (<http://www.gro-scotland.gov.uk/futurepb.html>). If you would like to receive notification of forthcoming statistical publications, you can register your interest on the Scottish Government ScotStat website at <http://www.scotland.gov.uk/scotstat>.

Enquiries and Suggestions

Please visit our [enquiries](#) page if you need any further information. If you have comments or suggestions that would help us improve our outputs or our standards of service contact:

Kirsty MacLachlan, Senior Statistician, National Records of Scotland,
Room 1/2/3, Ladywell House, Ladywell Road, Edinburgh EH12 7TF.
Telephone: (0131) 314 4242
E-mail: kirsty.maclachlan@gro-scotland.gsi.gov.uk.

Related organisations

Organisation	Contact
<p>The Scottish Government (SG) forms the bulk of the devolved Scottish Administration. The aim of the statistical service in the SG is to provide relevant and reliable statistical information, analysis and advice that meets the needs of government, business and the people of Scotland.</p>	<p>Office of the Chief Statistician, Scottish Government, 1.N04, St Andrew's House, Edinburgh, EH1 3DG.</p> <p>Telephone: (0131) 244 0442</p> <p>E-mail: statistics.enquiries@scotland.gsi.gov.uk</p> <p>Website: http://www.scotland.gov.uk/Statistics</p>
<p>The Office for National Statistics (ONS) is responsible for producing a wide range of economic and social statistics. It also holds the Census of Population for England and Wales.</p>	<p>Customer Contact Centre, Room 1.015, Office for National Statistics, Cardiff Road, Newport, NP10 8XG.</p> <p>Telephone: 0845 601 3034</p> <p>Minicom: 01633 812399</p> <p>E-mail: info@statistics.gsi.gov.uk</p> <p>Website: http://www.ons.gov.uk</p>
<p>The Northern Ireland Statistics and Research Agency (NISRA) is Northern Ireland's official statistics organisation. The Agency also has responsibility, in Northern Ireland, for the registration of births, marriages, adoptions and deaths and the Census of Population.</p>	<p>Northern Ireland Statistics and Research Agency, McAuley House, 2-14 Castle Street, Belfast, BT1 1SA.</p> <p>Telephone: 028 9034 8100</p> <p>Website: http://www.nisra.gov.uk</p>

© Crown copyright, (2011)

You may use and re-use the information featured on this website (not including logos) free of charge in any format or medium, under the terms of the open Government Licence. To view this licence visit <http://www.gro-scotland.gov.uk/copyright.html>.