

Figure 1 Estimated population of Scotland, 1951 to 2011

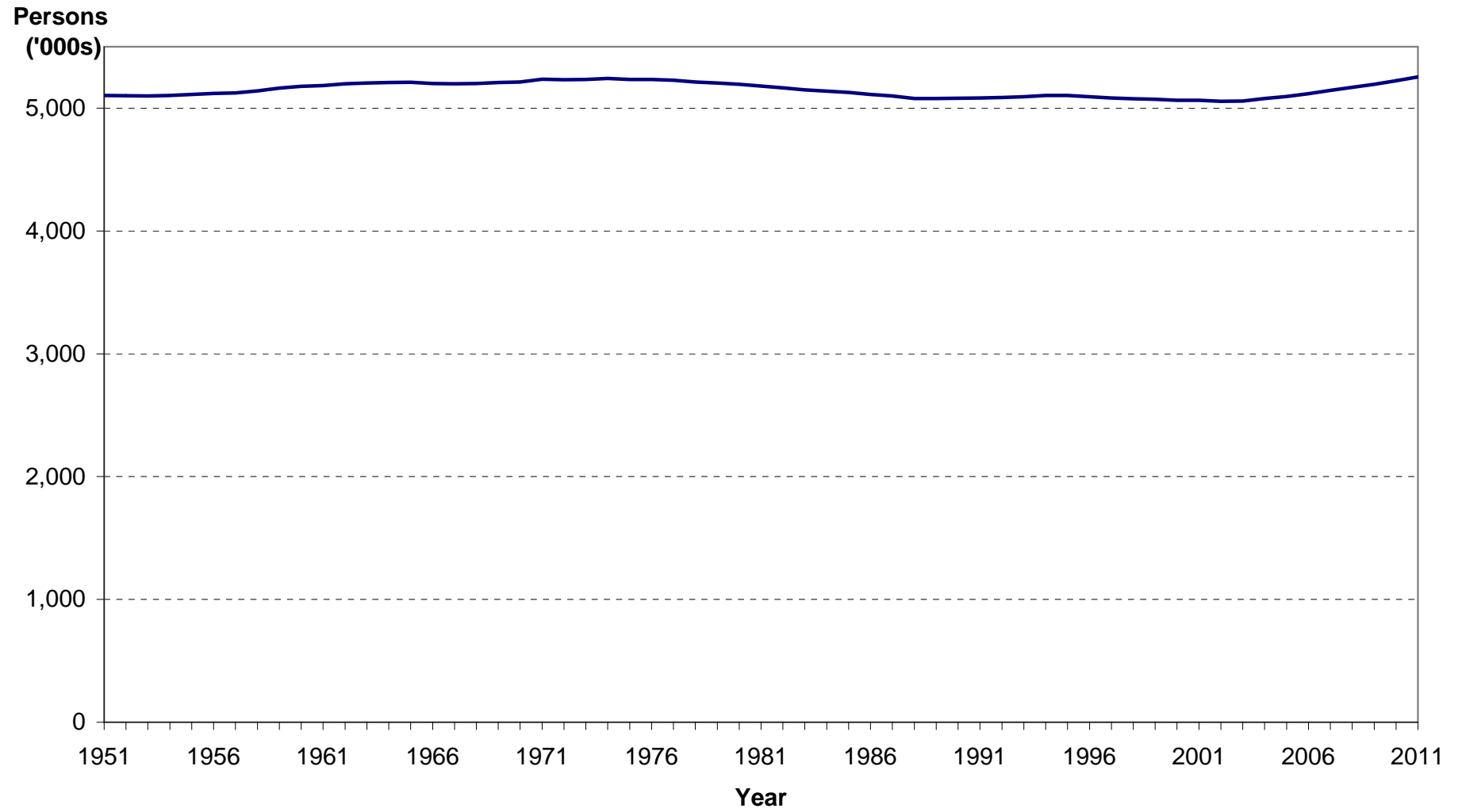


Figure 2 Natural change and net migration, 1951 to 2011

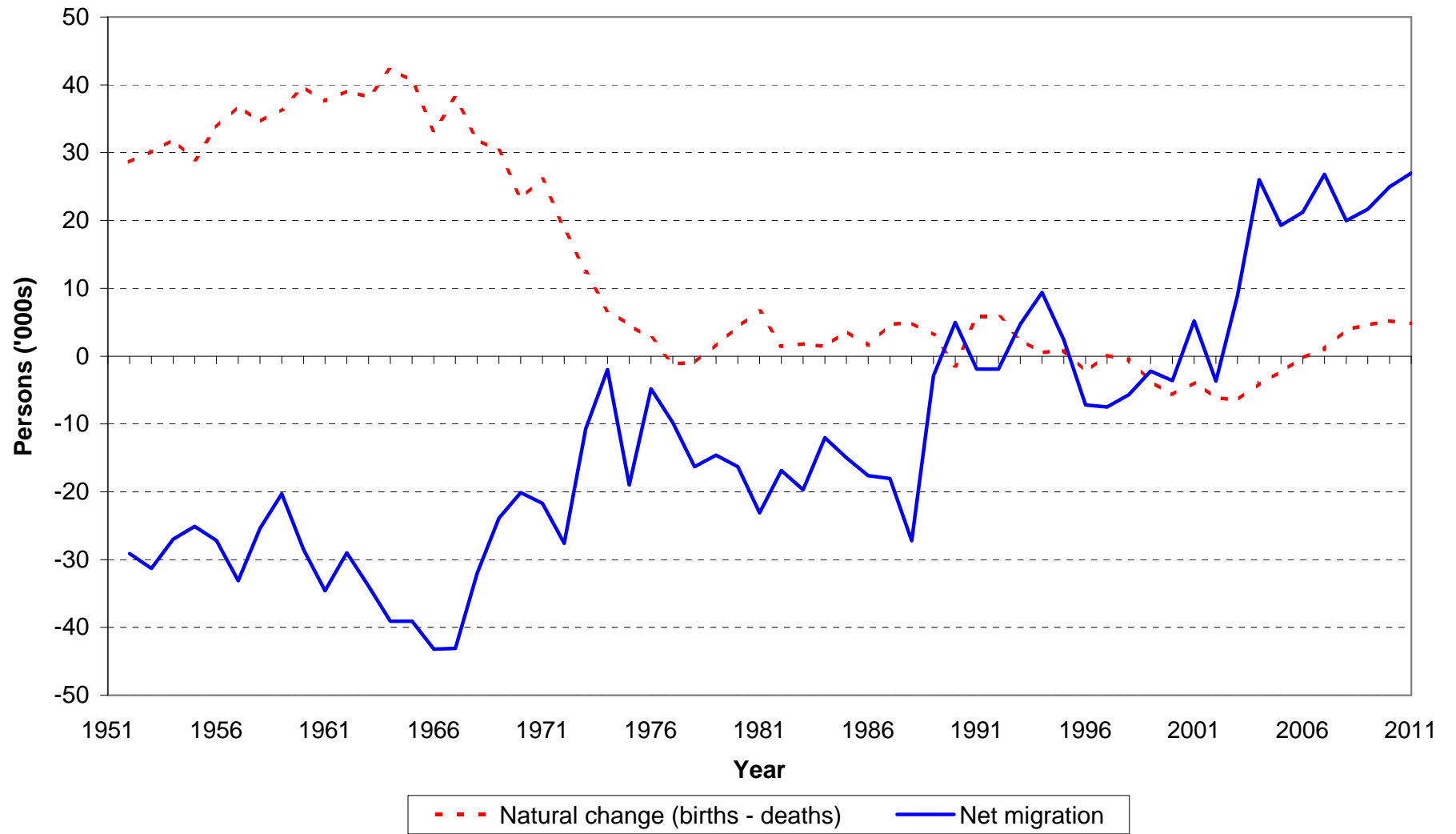


Figure 3 Estimated population by age and sex, mid-2011

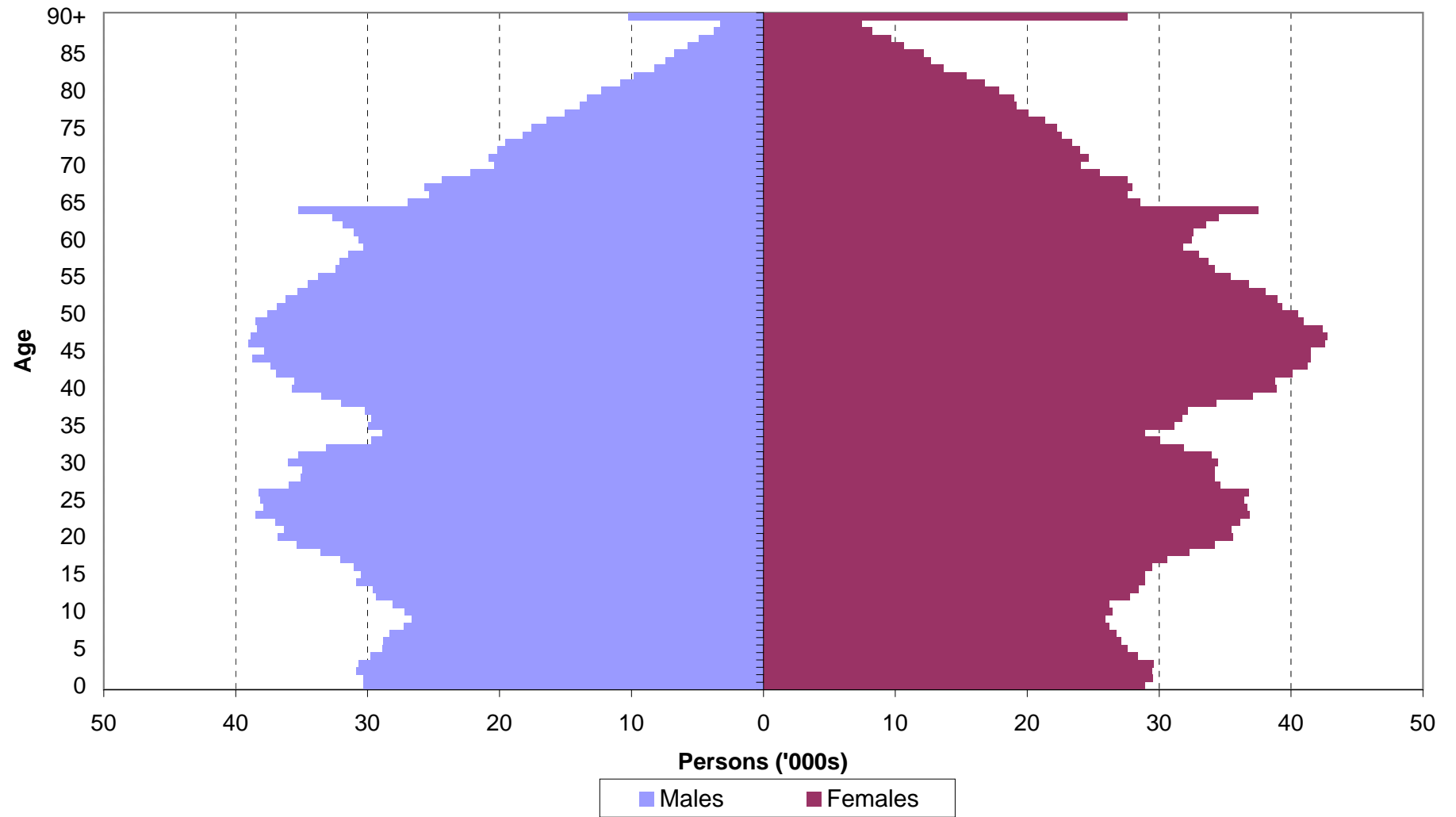
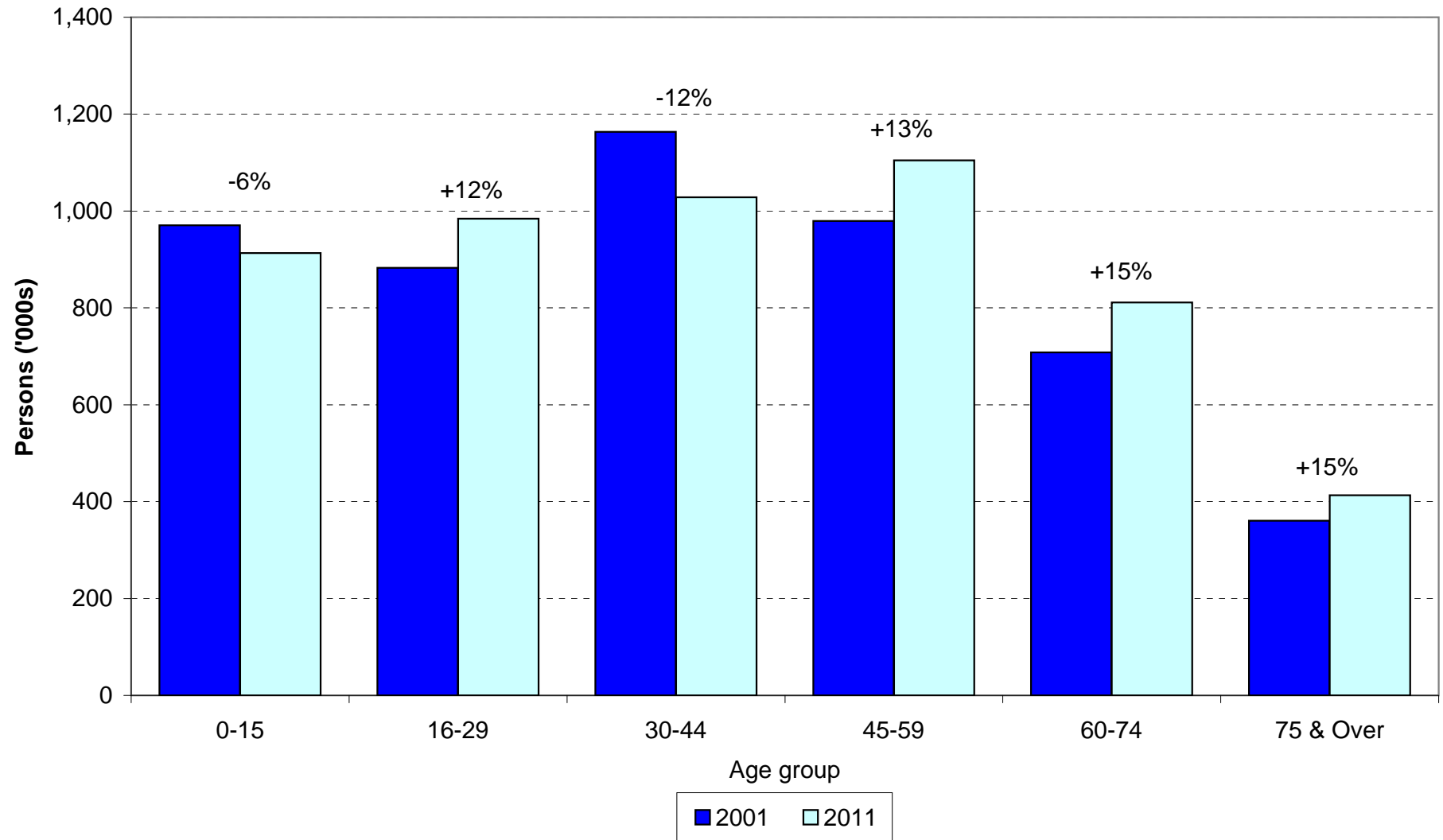
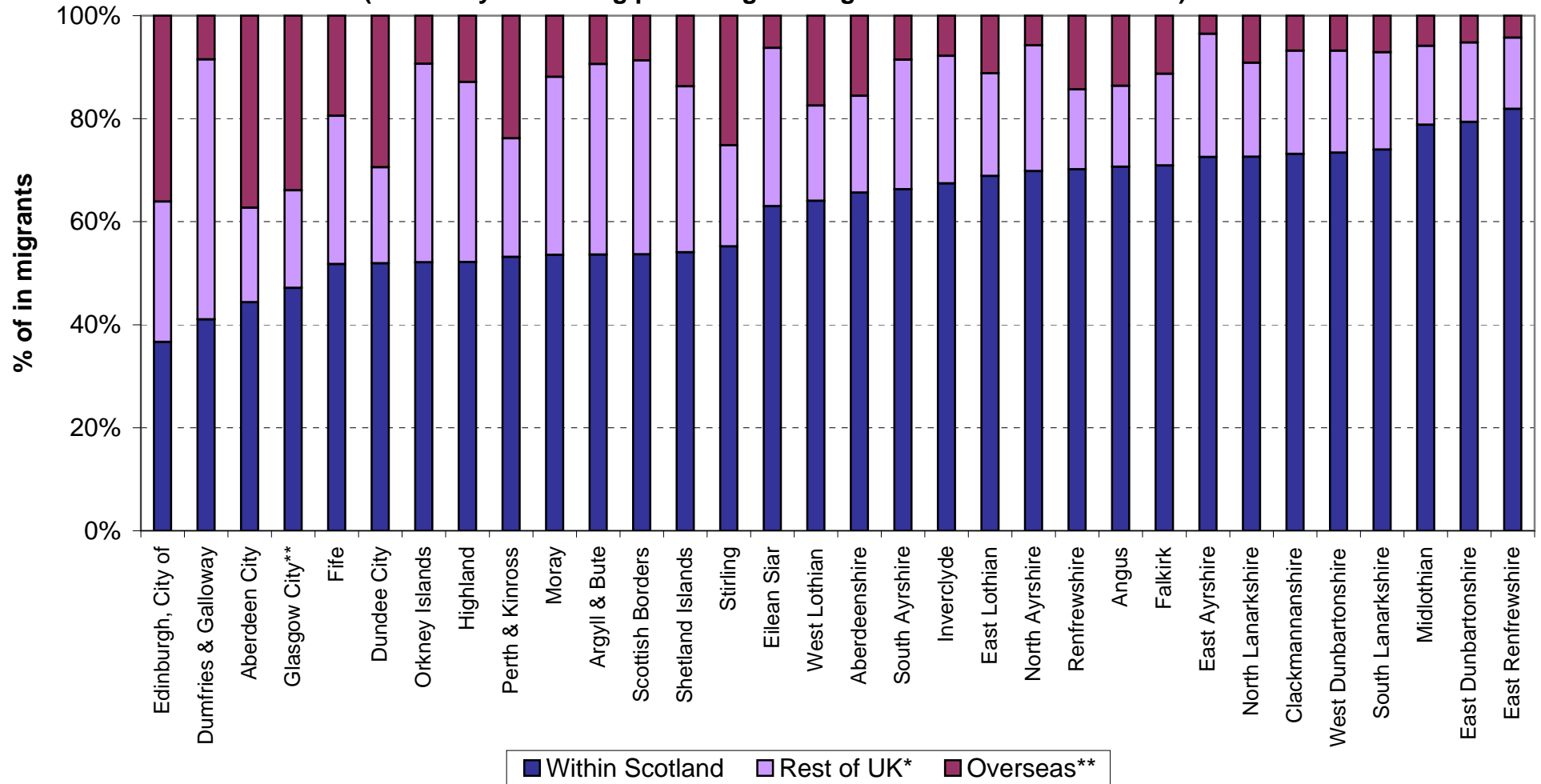


Figure 4 The changing age structure of Scotland's population, mid-2001 to mid-2011



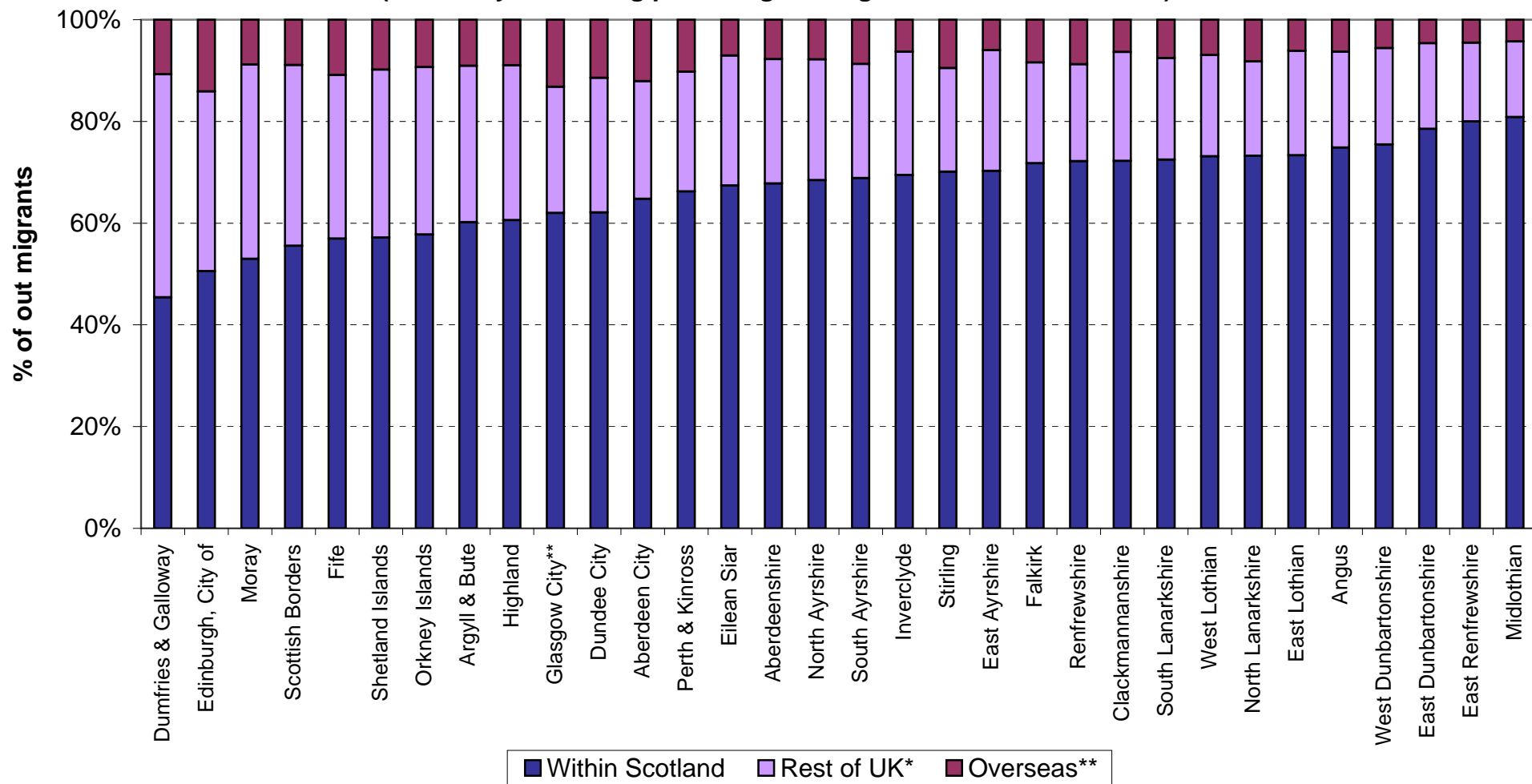
**Figure 5a Origin of in-migrants by Council areas, mid-2010 to mid-2011
(ranked by increasing percentage of migrants from within Scotland)**



* Includes moves from the armed forces

** Includes asylum seekers

**Figure 5b Destination of out-migrants by Council areas, mid-2010 to mid-2011
(ranked by increasing percentage of migrants to within Scotland)**



* Includes moves to the armed forces

** Includes asylum seekers returning to their country

Figure 6a Percentage change in population, Council areas, mid-2001 to mid-2011 (Map)

% population change

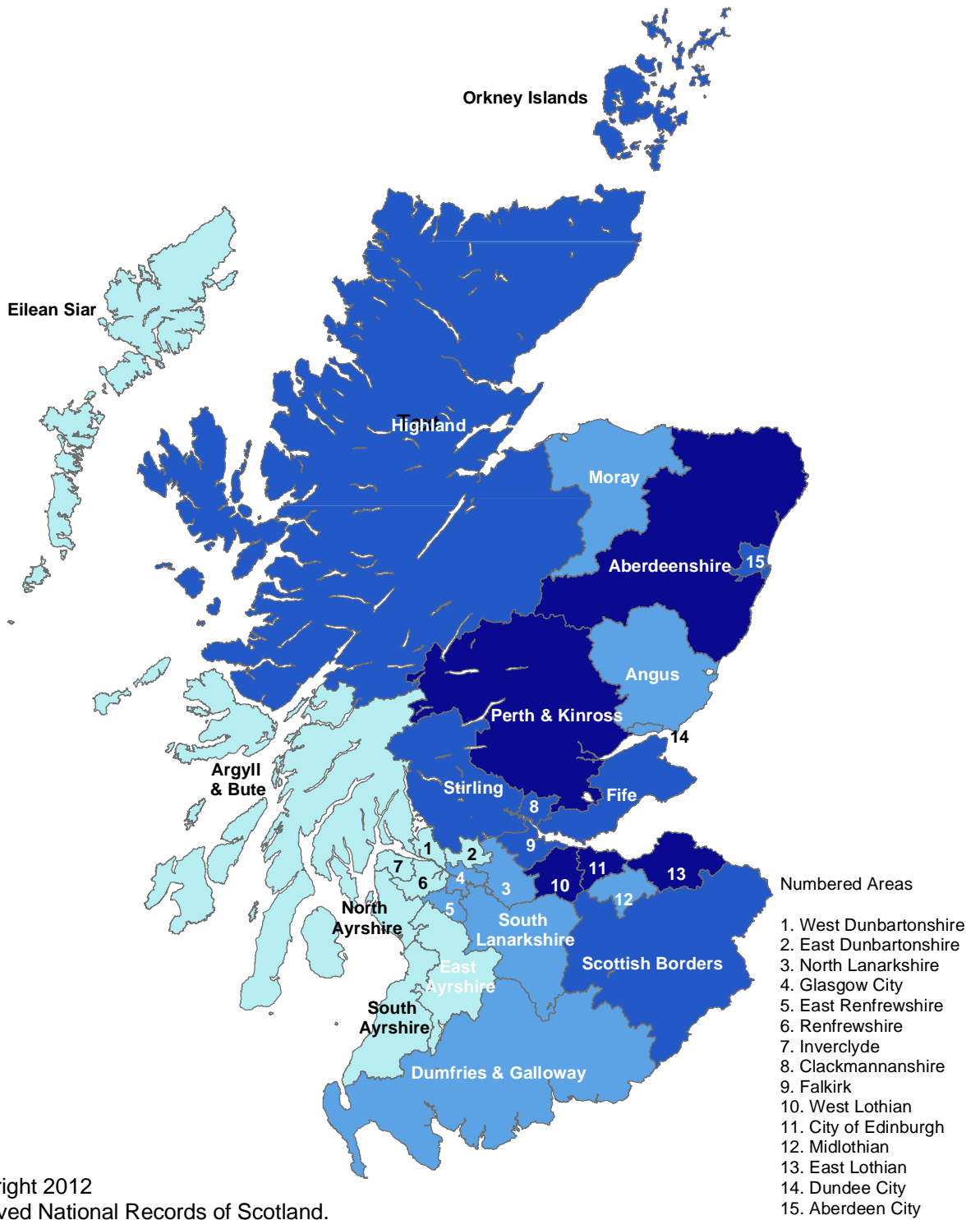
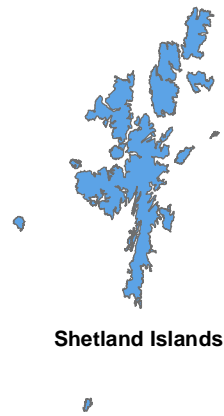
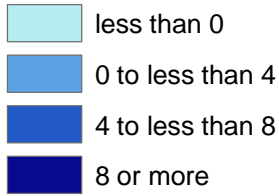


Figure 6b Percentage change in population, Council areas, mid-2001 to mid-2011

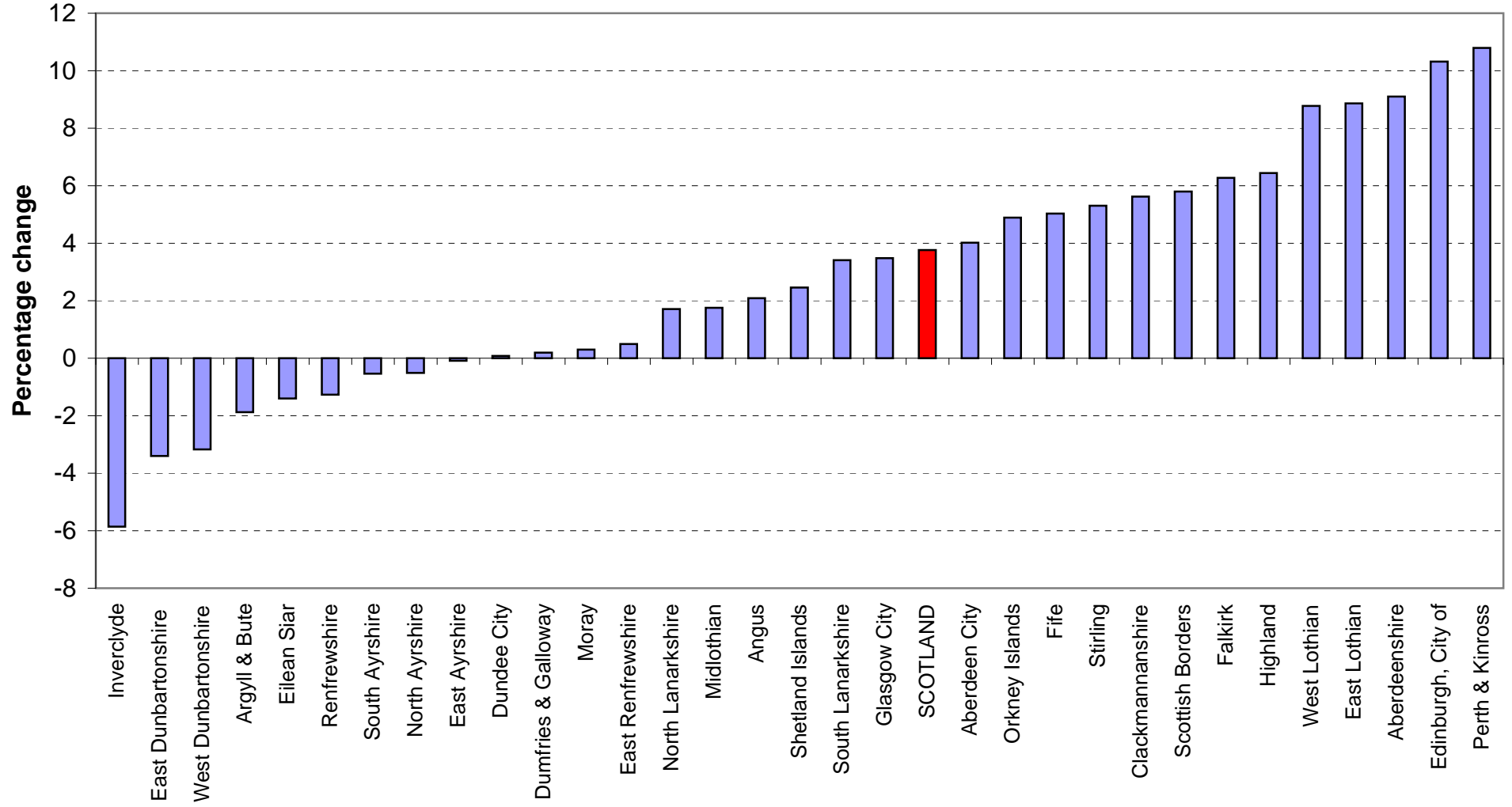


Figure 7a Percentage change in population, NHS Board areas, mid-2001 to mid-2011 (Map)

% population change

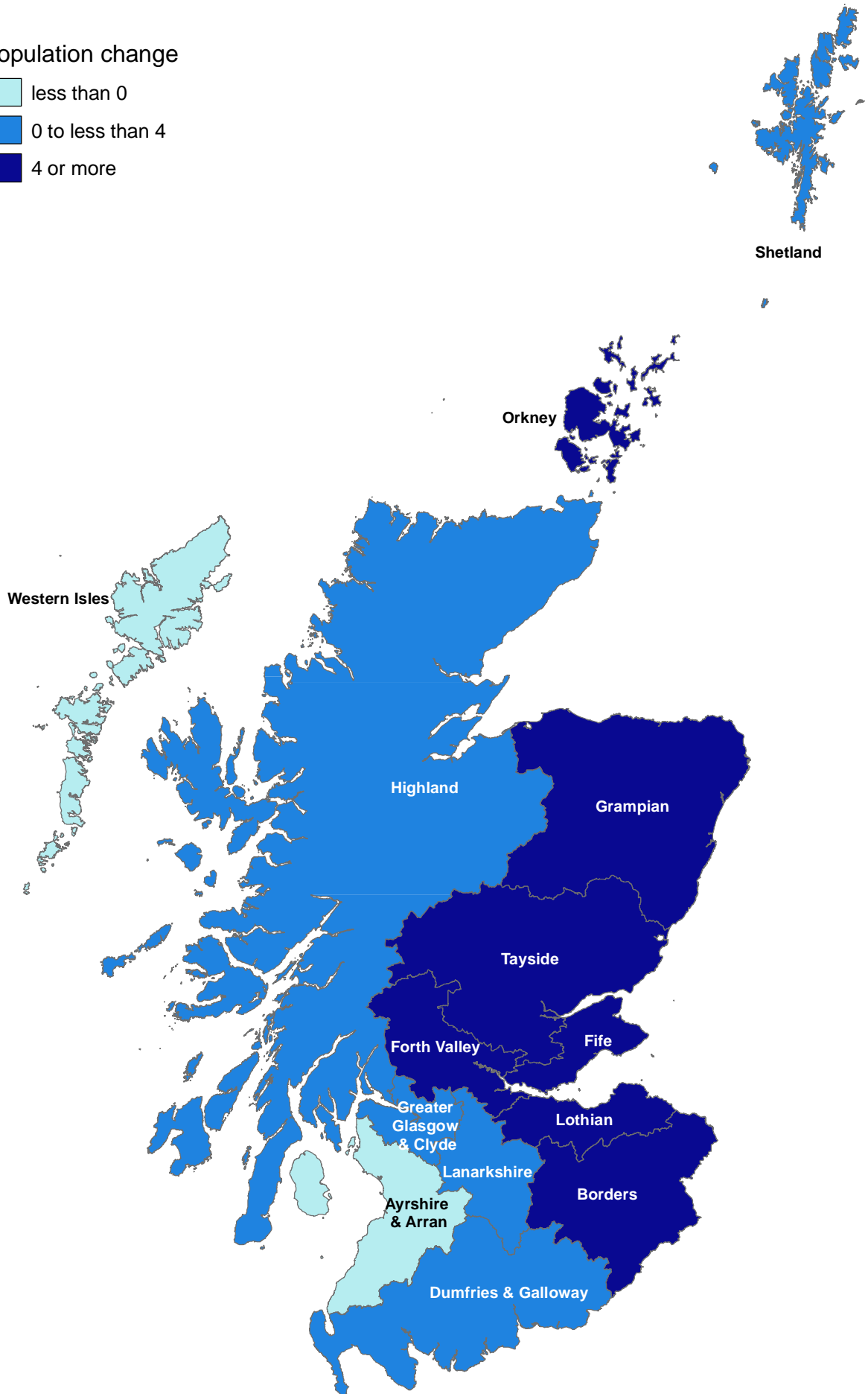
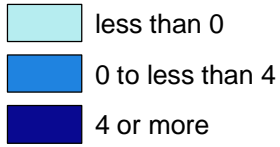
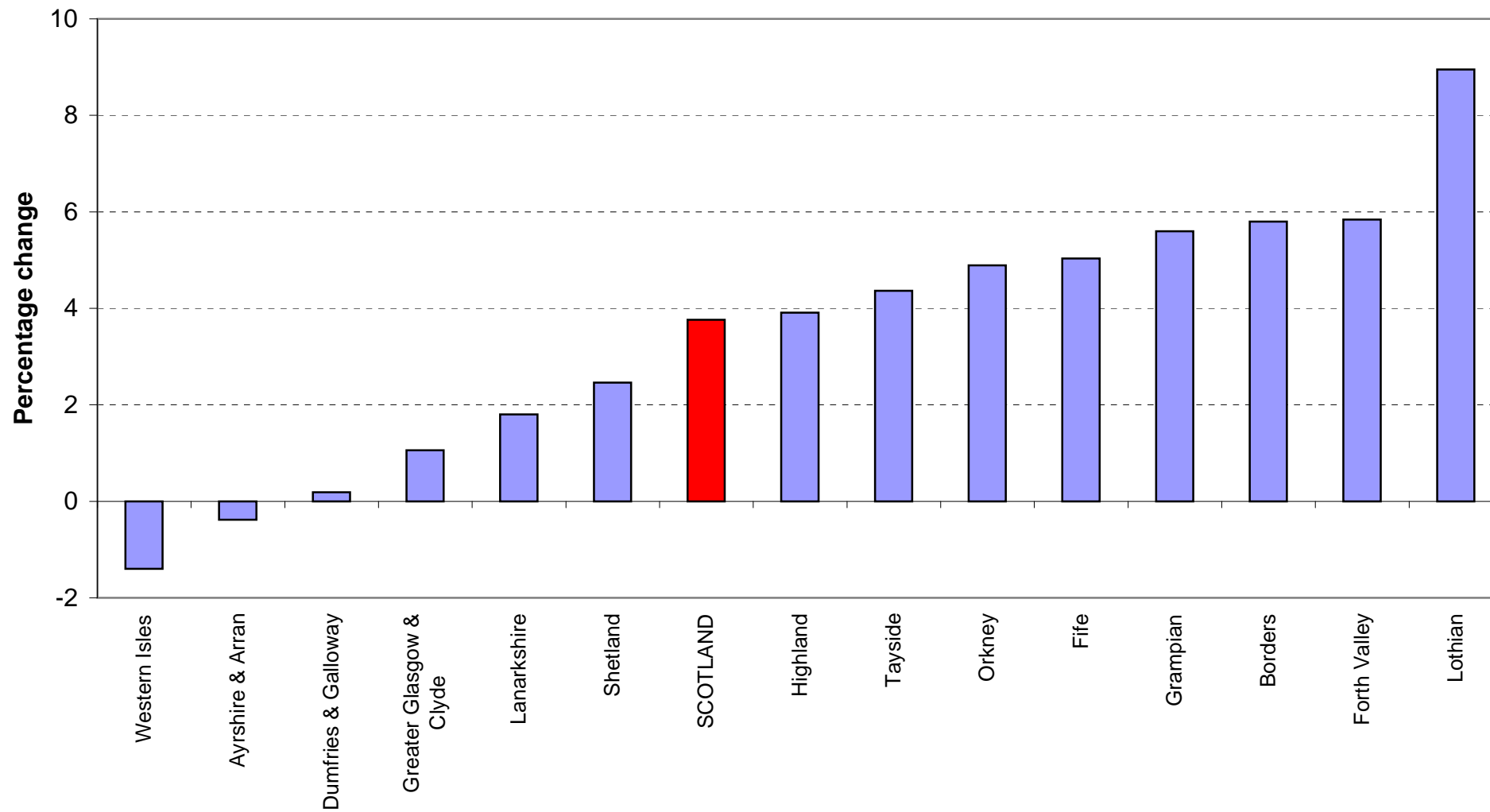
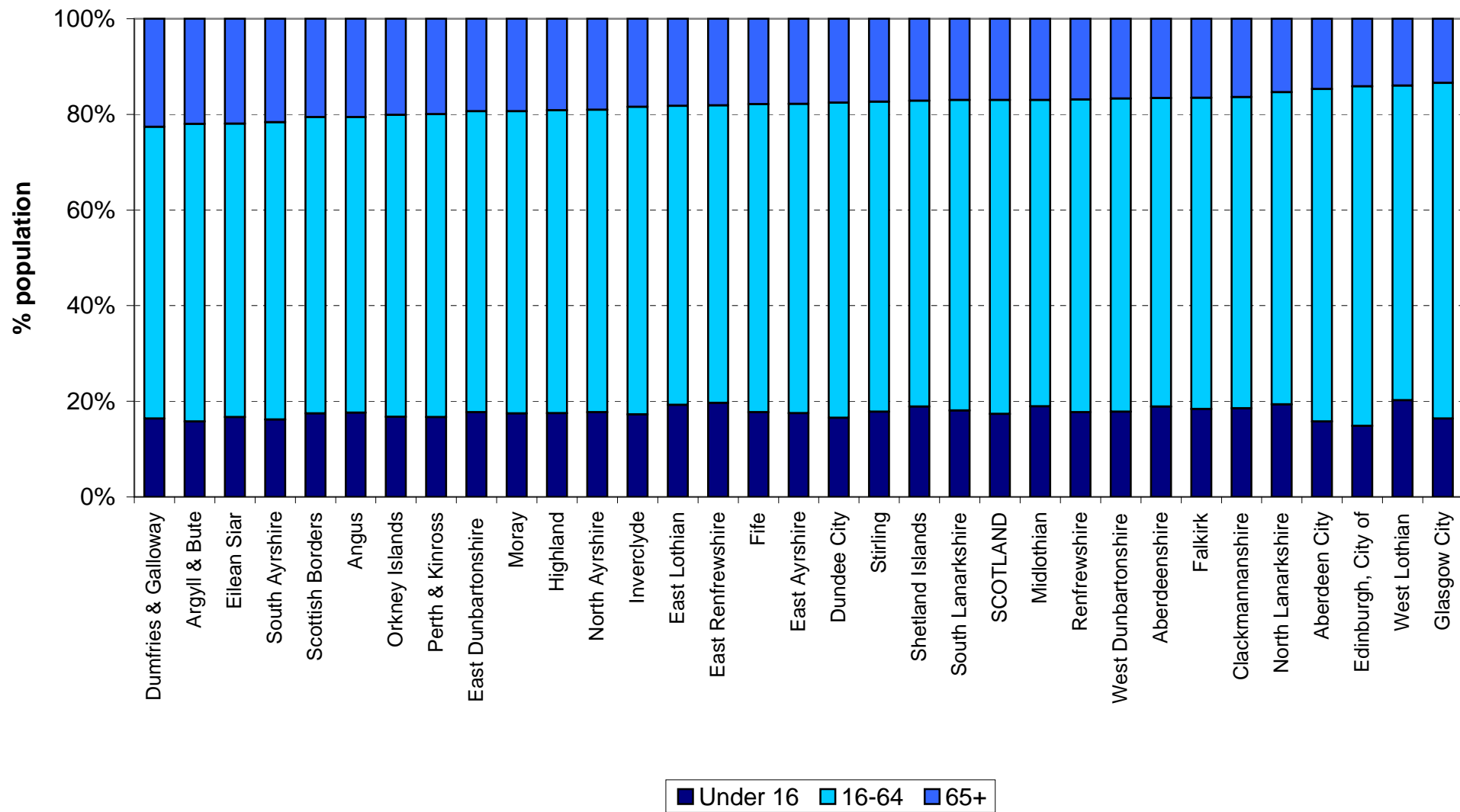


Figure 7b Percentage change in population, NHS Board areas, mid-2001 to mid-2011



**Figure 8 Age structure of Council areas, mid-2011
(ranked by percentage aged 65+)**



**Figure 9 Age structure of NHS Board areas, mid-2011
(ranked by percentage aged 65+)**

