

General Register Office

S C O T L A N D

information about Scotland's people

**Population Projections Scotland
(2004-based)**

Population projections by sex, age
and administrative area

First published on 20 October 2005

Revised 27 September 2007

A National Statistics publication

National Statistics are produced to high professional standards set out in the National Statistics Code of Practice. They undergo regular quality assurance reviews to ensure that they meet customer needs. They are produced free from any political interference.

Contents

Main Points	1
1. Background	2
2. Results of the projection	2
2.1 Scotland	2
2.2 Council areas	3
2.3 NHS board areas.....	5
2.4 Age structure across Scotland.....	5
3. Comparisons with the 2002-based projections	14
4. Methodology and assumptions	15
4.1 Methodology.....	15
4.2 Base population.....	16
4.3 Projections software system and other small method changes	16
4.4 Fertility.....	17
4.5 Mortality.....	18
4.6 Migration.....	19
5. Uses and limitations of projections	20
6. Consequences of projections	20
7. Further information	21
Annex A.....	32
Annex B.....	33
Annex C	34
Annex D	35
Annex E.....	36
8. NOTES ON STATISTICAL PUBLICATIONS.....	37

List of Tables

Table A	Projected percentage changes in population (2004-based), by broad age group, council areas, 2004-2024	11
Table B	Average completed family size assumptions.....	17
Table 1	Projected population by council and NHS board area (2004-based), 2004-2024	22
Table 2	Projected population (2004-based) by sex and broad age group, council and NHS board areas, selected year.....	23
Table 3	Projected percentage changes in population (2004-based), by broad age group, council and NHS board areas, selected years.....	29
Table 4	Projected births (2004-based), by council and NHS board areas, 2004-2024	30
Table 5	Comparison between 2002 and 2004-based population projections, by council and NHS board areas, 2004-2018.....	31

Detailed Tables - for each administrative area by single year of age and sex are also available on the GROS website.

List of Figures

Figure 1	Estimated population of Scotland (2004-based), actual and projected, 1951-2024	3
Figure 2a	Projected percentage change in population (2004-based), by council area, 2004-2024 (Map)	4
Figure 2b	Projected percentage change (2004-based), by council area, 2004-2024	5
Figure 3a	Projected percentage change in population, 2004-based, by NHS board area, 2004-2024 (Map).....	6
Figure 3b	Projected percentage change (2004-based), by NHS board area, 2004-2024 (Chart)	7
Figure 4a	Projected percentage change in population aged 0-15 (2004-based), council area, 2004-2024	7
Figure 4b	Projected percentage change in population of working age (16-59/64) ¹ (2004-based), by council area, 2004-2024	8
Figure 4c	Projected percentage change in population aged 60/65+ (2004-based), by council area, 2004-2024	9
Figure 5a	Projected percentage change in population aged 0-15 (2004-based), by NHS board area, 2004-2024	10
Figure 5b	Projected percentage change in population of working age(16-59/64) (2004-based), by NHS board area, 2004-2024	10
Figure 5c	Projected percentage change in population aged 60/65+ (2004-based), by NHS board area, 2004-2024	10
Figure 6a	Age structure of council areas in 2004: 0-15,16-64, and 65+ (%).....	12
Figure 6b	Projected age structure of council areas in 2024 (2004-based): 0-15, 16-64 and 65+ (%).....	12
Figure 7a	Projected age structure of NHS board areas in 2004: 0-15, 16-64 and 65+ (%).....	13
Figure 7b	Projected age structure of NHS board areas in 2004: 0-15, 16-64 and 65+ (%).....	13
Figure 8	Percentage change between 2002 and 2004-based population projections in 2018, by council area.....	14
Figure 9	Percentage change between 2002 and 2004-based population projections in 2018, by NHS board area	15
Figure 10	Projected percentage change in births (2004-based), by council area, 2004-2024	18

Main Points

The key points in this paper are:

- although at the Scotland level the population is projected to rise over the next 15 years before declining slowly, there are differences in this pattern across Scotland with some areas projected to increase in size and others to decrease;
- most council areas adjacent, or close to, Edinburgh City are projected to increase in size by 2024, whereas other large urban areas like Aberdeen City, Glasgow City and Dundee City are projected to decline. Other council areas in the west of Scotland and the Island councils are also projected to decline by 2024;
- among council areas, the greatest projected increase in population during the period 2004 to 2024 is in West Lothian at 21 per cent, followed by Scottish Borders with 15 per cent. Aberdeen City and Eilean Siar have the largest projected decreases at -18 per cent and -15 per cent respectively;
- for NHS board areas, Borders (+15 per cent) and Lothian (+11 per cent) show the greatest projected increases in population between 2004 and 2024. The largest decreases are projected in Western Isles (-15 per cent) and Shetland (-11 per cent);
- Scotland's population is projected to age between 2004 and 2024 and this is true for most administrative areas to a greater or lesser extent. Among council areas the number of children aged 0-15 is projected to decrease in all areas apart from Scottish Borders (an increase of 7 per cent), West Lothian (+6 per cent) and Edinburgh City (+3 per cent). The projected decline in other areas ranges from -40 per cent in the Shetland Islands to -0.1 per cent in Fife;
- by 2024, the population of working age¹ is projected to increase in 12 council areas and decrease in 20, increasing the most in West Lothian (+20 per cent) and decreasing the most in Aberdeen City (-22 per cent);
- The population of pensionable¹ age is projected to increase by 2024 in all apart from 2 council areas (Glasgow City and Dundee City are projected to fall by -13 per cent and -5 per cent respectively).
- Similar projected changes in age structure can also be seen in NHS board areas.

¹ Includes the change in women's state pension age between 2010 and 2020.

1. Background

1.1 This paper summarises the Registrar General for Scotland's mid-2004 based population projections for the council and NHS board areas of Scotland. The projections are consistent with the mid-2004 based national population projections, prepared by the Government Actuary's Department (GAD) on behalf of the Registrars General for the constituent countries of the UK.

1.2 The projections in this paper are based on revised 2004 population estimates published on 27 July 2007. These were revised following a review of the methodology used by the General Register Office for Scotland (GROS). More information can be found on the GROS website:

<http://www.gro-scotland.gov.uk/statistics/publications-and-data/population-estimates/revised-mid-year-population-estimates-2003-2006.html>

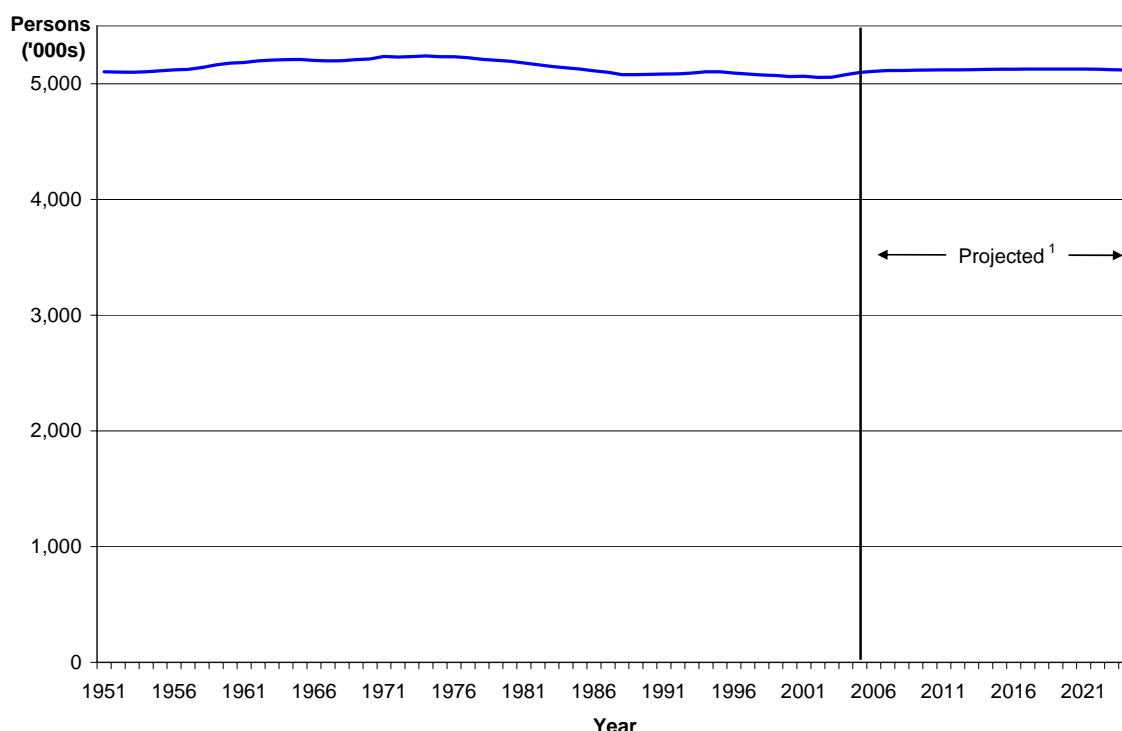
1.3 The Population and Migration Statistics Committee, which advises the Registrar General on demographic matters, recommended that this round of sub-national projections should be prepared up to 2024 (20 years ahead), rather than for 16 years as in previous years. Other small changes have been made to the software and method used to produce the projections and these are explained in **Section 4**. It should be remembered when looking at these results that they are mainly trend based and do not take account of policy initiatives or natural disasters. It is also important to note that projections become more uncertain the further ahead they go, especially for smaller areas, as these populations are affected more by the migration assumptions made. The uses and the limitations of these projections are described in more detail in **Section 5**.

2. Results of the projection

2.1 Scotland

The results of the 2004-based projections show the total population of Scotland rising from 5.08 million in 2004 to 5.13 million in 2019 before falling to 5.07 million by 2031. Longer term projections for up to 40 years ahead show a continuing decline after 2031 to 4.86 million in 2044. The point at which Scotland's population is projected to fall below 5 million is now 2036 rather than 2017. It should be stressed that the precise point at which the population reaches a particular level can be very sensitive to relatively small changes in the underlying assumptions, and should therefore be treated with caution. **Figure 1** shows the results for Scotland for 20 years ahead, up to 2024 where the decline after 2019 can just be seen.

Figure 1 Estimated population of Scotland (2004-based), actual and projected, 1951-2024



¹ 2004-based projection.

A key point is that, despite the projected rise in the size of the population over the next 15 years, Scotland’s population is still projected to age markedly. In addition, changes in the size and age structure of Scotland’s population vary considerably across the administrative areas of Scotland. Further details on the national projection results are available on the General Register Office for Scotland’s (GROS) website through the following link:

<http://www.gro-scotland.gov.uk/statistics/publications-and-data/popproj/04population-projections/index.html>

2.2 Council areas

The populations of 14 of the 32 council areas in Scotland are projected to increase and 18 to decrease by 2024 as shown in **Table 1**. The map at **Figure 2a** and the chart at **Figure 2b** show the projected percentage change in population between 2004 and 2024 for each council area. In general, most councils adjacent, or close to, Edinburgh City are projected to increase in size whereas other large urban areas are projected to decline - for example, Aberdeen City, Glasgow City and Dundee City. Other areas in the west, such as Inverclyde, East and West Dunbartonshire, Renfrewshire and all the island council areas are also projected to decline.

The council areas which are projected to show the largest relative increases over this period are West Lothian (+21 per cent), Scottish Borders (+15 per cent), East Lothian (+13 per cent) and Edinburgh City (+10 per cent). The largest relative population decreases are projected in Aberdeen City (-18 per cent), Eilean Siar (-15 per cent), Dundee City (-14 per cent) and Inverclyde (-14 per cent).

Figure 2a Projected percentage change in population (2004-based), by council area, 2004-2024 (Map)

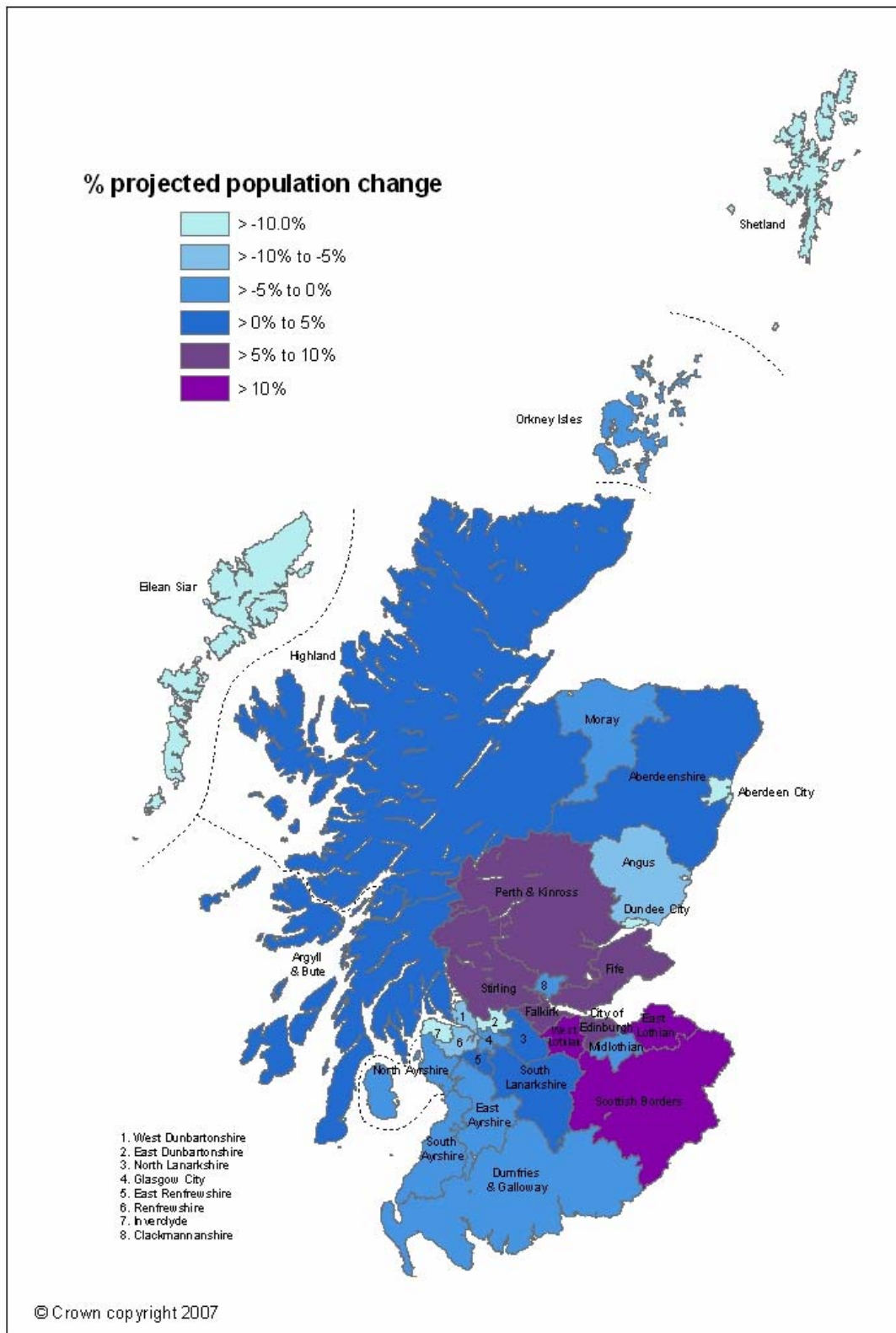
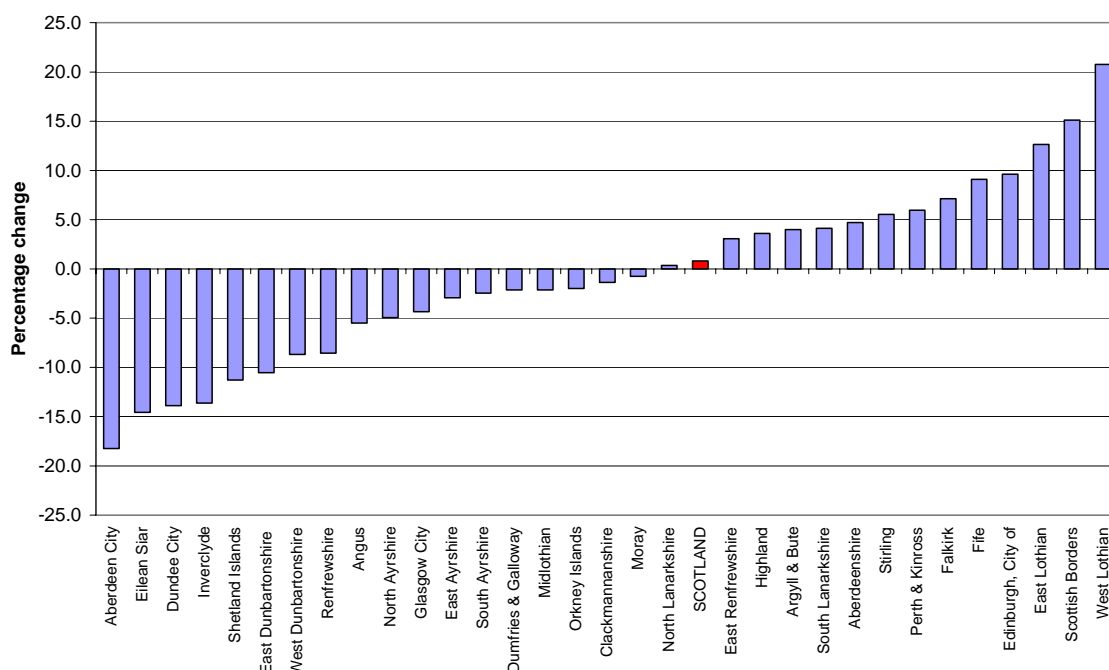


Figure 2b Projected percentage change in population (2004-based), by council area, 2004-2024 (Chart)



2.3 NHS board areas

There are also projected differences in the size of the populations of NHS board areas over the next 20 years. This is illustrated in the map at **Figure 3a** and the chart at **Figure 3b** which both show the projected percentage change in the population of NHS board areas between 2004 and 2024.

Six of the NHS board areas are projected to increase and 9 to decrease. The areas with the largest relative projected increases are Borders (+15 per cent), Lothian (+11 per cent), Fife (+9 per cent) and Forth Valley (+5 per cent). The areas with the largest relative projected decreases are Western Isles (-15 per cent), Shetland (-11 per cent), Argyll & Clyde (-6 per cent) and Grampian (-5 per cent).

2.4 Age structure across Scotland

As well as wide differences in the projected size of the population for different areas, there are large differences in the projected age structures of different areas. **Table 2** gives detailed population projections by age group and **Table 3** gives the changes for selected age bands. The number of children aged 0-15 is projected to decrease by 12 per cent from 0.94 million in 2004 to 0.82 million by 2024. The number of people of working age¹ is projected to decrease by 1 per cent from 3.18 million to 3.14 million and the number of people of pensionable¹ age to increase by 19 per cent from 0.97 million to 1.15 million.

¹ Includes the change in women's state pension age from 60 to 65 between 2010 and 2020.

Figure 3a Projected percentage change in population, (2004-based), by NHS board area, 2004-2024 (Map)

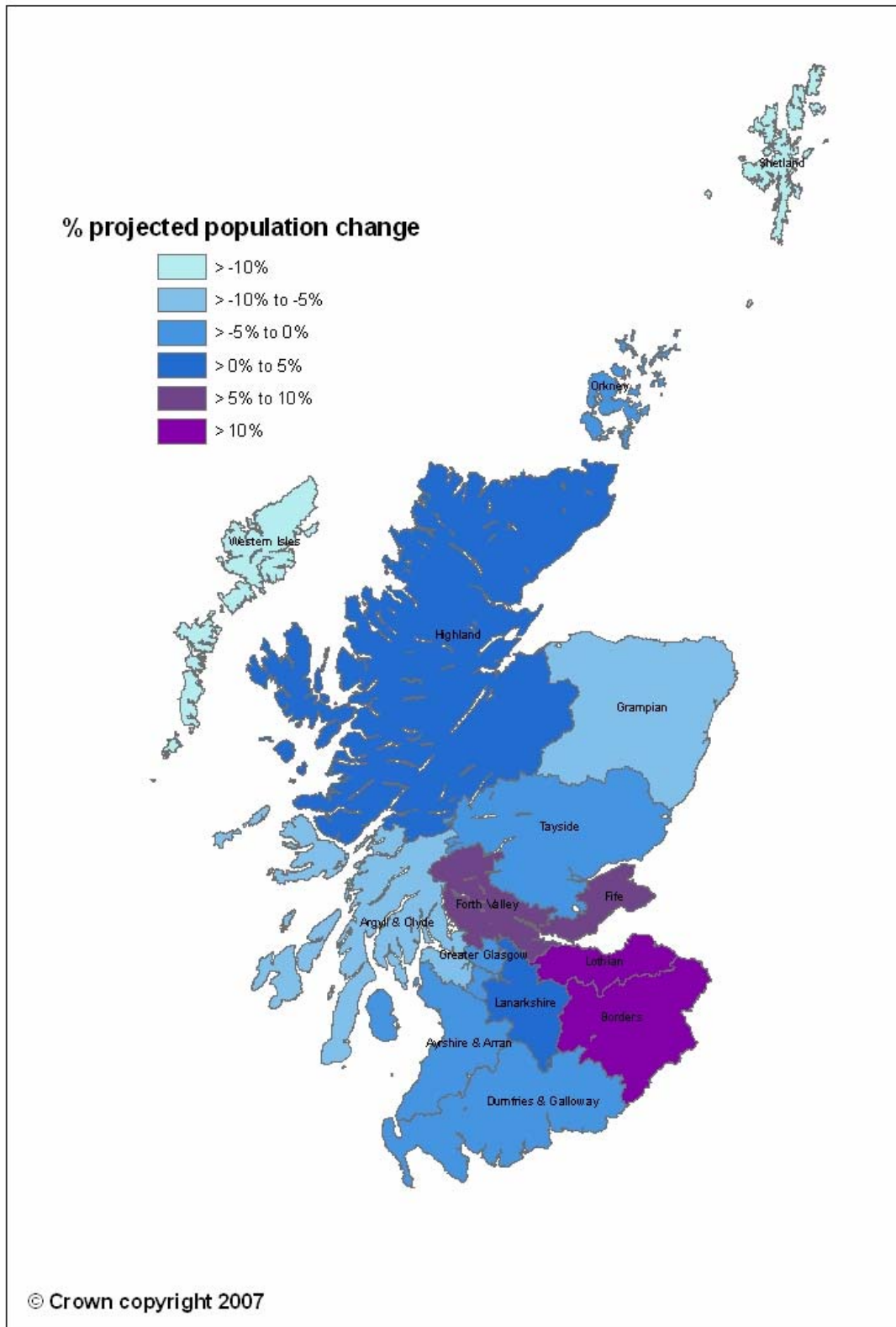
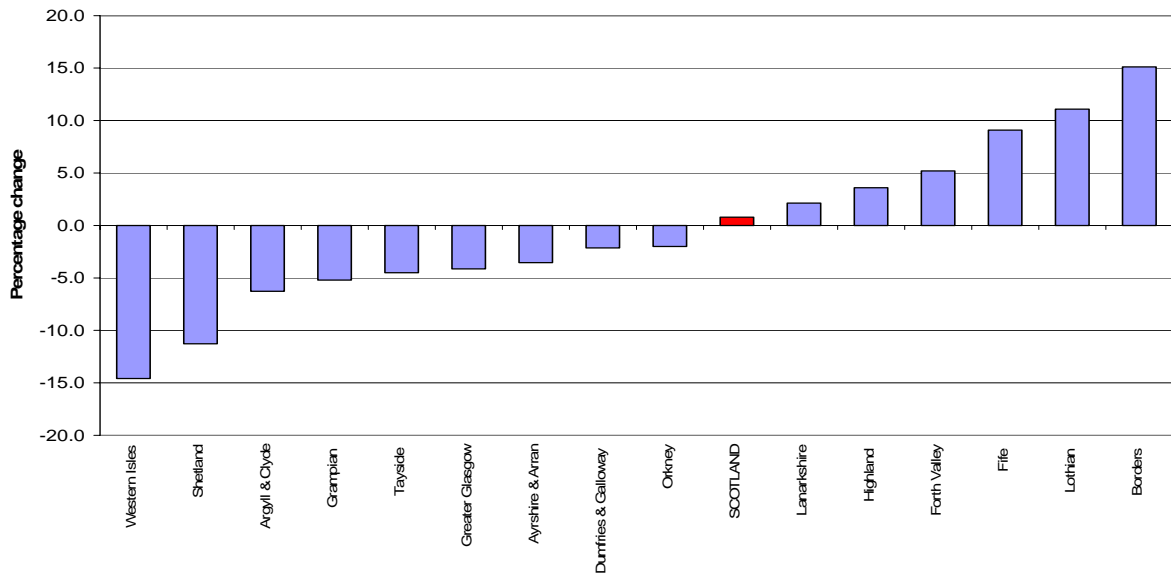
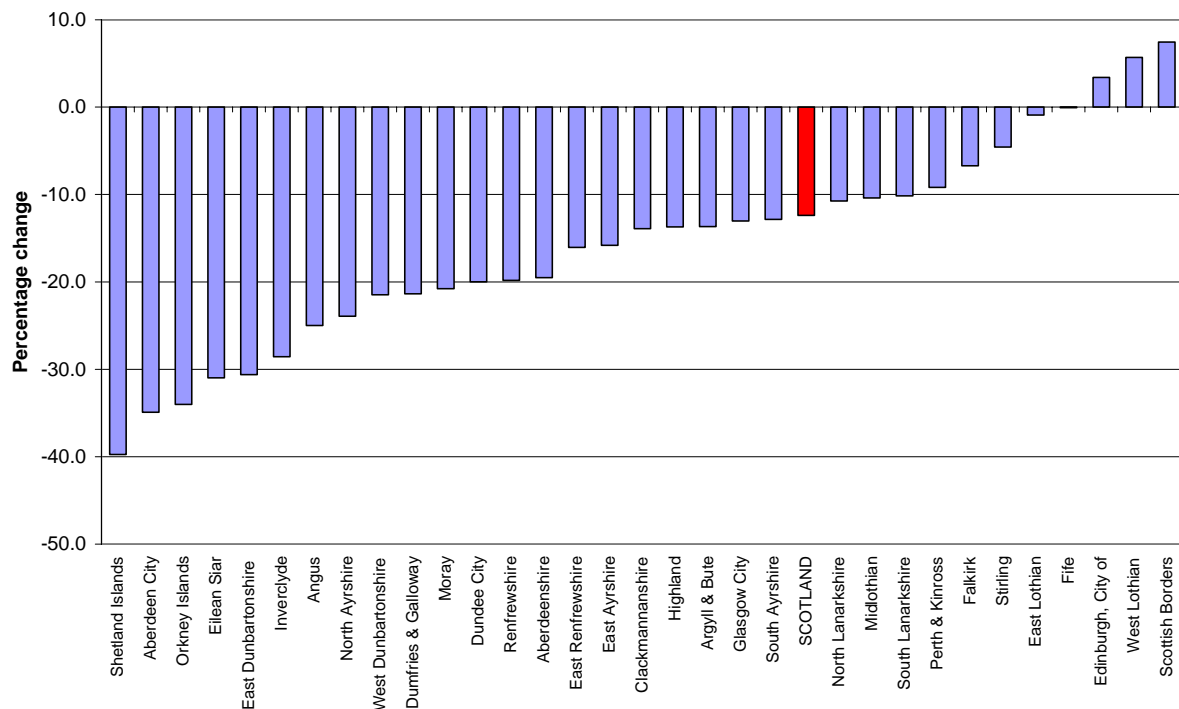


Figure 3b Projected percentage change (2004-based), by NHS board area, 2004-2024 (Chart)



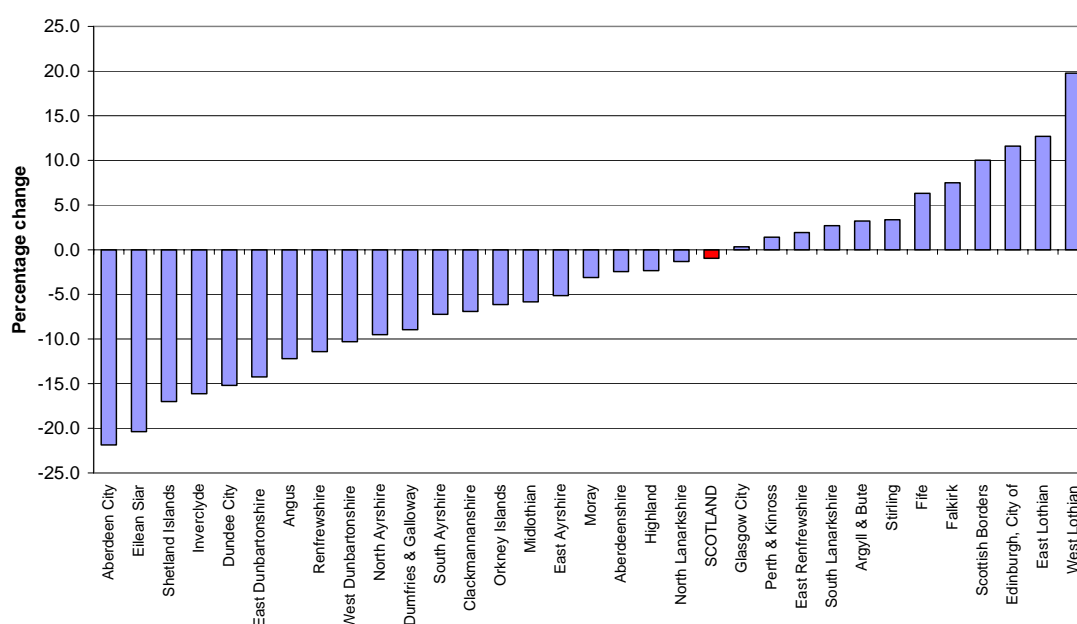
Amongst council areas the number of children aged 0-15 is projected to decrease in all areas by 2024 apart from Scottish Borders (an increase of 7 per cent), West Lothian (+6 per cent) and Edinburgh City (+3 per cent). The projected decline in the other council areas ranges from -40 per cent in the Shetland Islands to -0.1 per cent in Fife as shown in **Figure 4a**.

Figure 4a Projected percentage change in population aged 0-15 (2004-based), by council area, 2004-2024



There are also projected differences in the size of the working age¹ population between council areas by 2024. **Figure 4b** shows the percentage change in the population aged 16-59/64¹ between 2004 and 2024 and includes the change in women's state pension age from 60 to 65 between 2010 and 2020. Of course this is the state retirement age and in practice people will retire at a range of ages. The working age population is projected to increase in 12 council areas by 2024; increasing the most in West Lothian (+20 per cent), East Lothian (+13 per cent), Edinburgh City (+12 per cent) and Scottish Borders (+10 per cent). A decrease is projected in the remaining 20 council areas ranging from a decrease of -22 per cent in Aberdeen City to a decrease of -1 per cent in North Lanarkshire.

Figure 4b Projected percentage change in population of working age (16-59/64)¹ (2004-based), by council area, 2004-2024

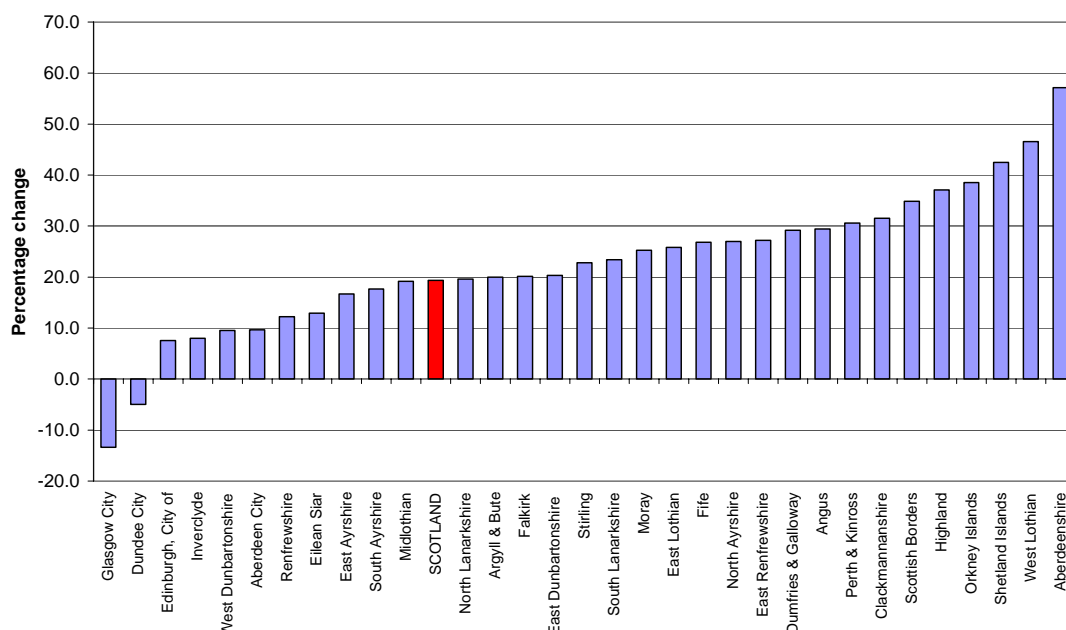


¹Includes the change in women's state pension age from 60 to 65 between 2010 and 2020.

Table 3 shows the projected percentage change in the working age population at 2024, taking account of the change in women's state pension age between 2010 and 2020. It also shows the percentage change if women's state pension age remained the same. For Scotland, the projected percentage decrease in the size of the working age population between 2004 and 2024 would be -7 per cent instead of -1 per cent. In West Lothian, the projected increase in the working age population would reduce from 20 per cent to 13 per cent.

There are also differences between council areas in terms of the projected percentage change in the population of pensionable age (taking into account the change in women's state retirement age), as **Figure 4c** shows. The population of pensionable age is projected to increase in all but 2 council areas by 2024 (Glasgow City and Dundee City are projected to fall by -13 per cent and -5 per cent respectively). The largest relative increases are projected to be in Aberdeenshire (+57 per cent), West Lothian (+47 per cent), the Shetland Islands (+42 per cent) and the Orkney Islands (+39 per cent). **Table 3** also shows the projected percentage change between 2004 and 2024 not including the change in women's pension age for NHS board areas.

Figure 4c Projected percentage change in population aged 60/65+ (2004-based), by council area, 2004-2024



¹Includes the change in women's state pension age from 60 to 65 between 2010 and 2020.

By 2024 the Scottish population aged 75 and over is projected to increase by 53 per cent, ranging from a projected increase of 112 per cent in West Lothian to a projected decrease of -5 per cent in Glasgow City.

There are similar variations by NHS board area. **Figure 5a, Figure 5b and Figure 5c** show the projected percentage change in the population aged 0-15, 16-59/64 and 60/65+ by NHS board areas. The number of children aged 0-15 is projected to decrease in all NHS board areas except Lothian and Borders. In addition, the population of working age¹ is projected to decrease in all except 5 areas: Lothian, Borders, Fife, Forth Valley and Lanarkshire. In contrast the population of pensionable¹ age is projected to increase in all NHS board areas apart from Greater Glasgow where it is projected to decrease by -2 per cent between 2004 and 2024.

The previous section described the relative changes in population numbers overall and within age groups across local authority and health board areas. **Table A** summarises these changes, moving from the area with the greatest projected population decrease (Aberdeen City) to the area with the largest increase (West Lothian) and shows the following general pattern. The decreases in population are largely associated with large decreases in children and working age population. In areas with increases in population, this is associated with large increases in the pensionable aged population.

In contrast to this general pattern, Glasgow City is projected to have a decrease in both children and pensionable aged population. In Edinburgh City, the population in each age group is projected to increase, with the greatest increase in the working age population.

Figure 5a Projected percentage change in population aged 0-15 (2004-based), by NHS board area, 2004-2024

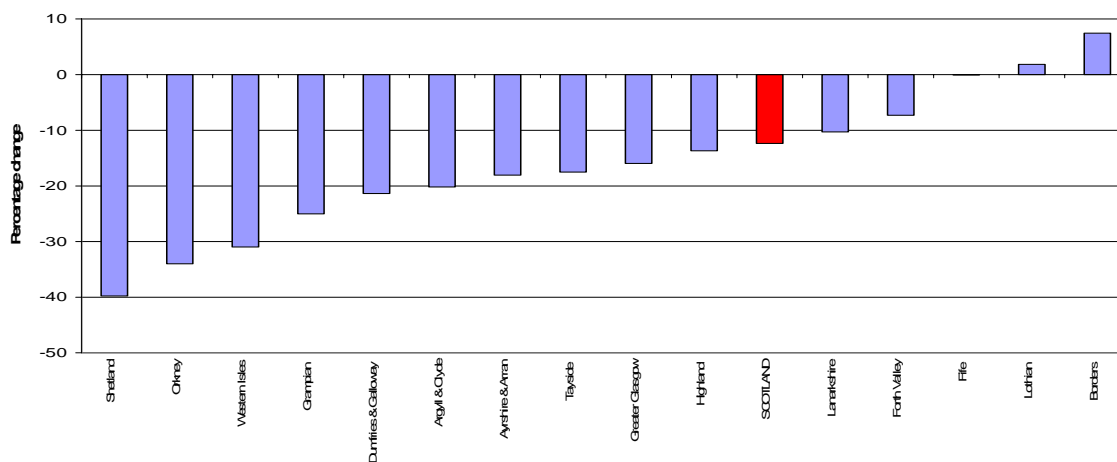
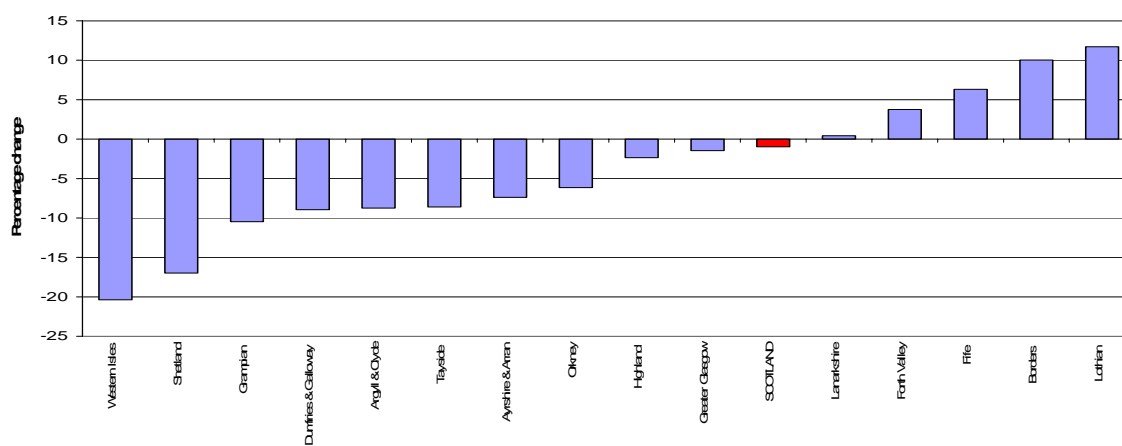
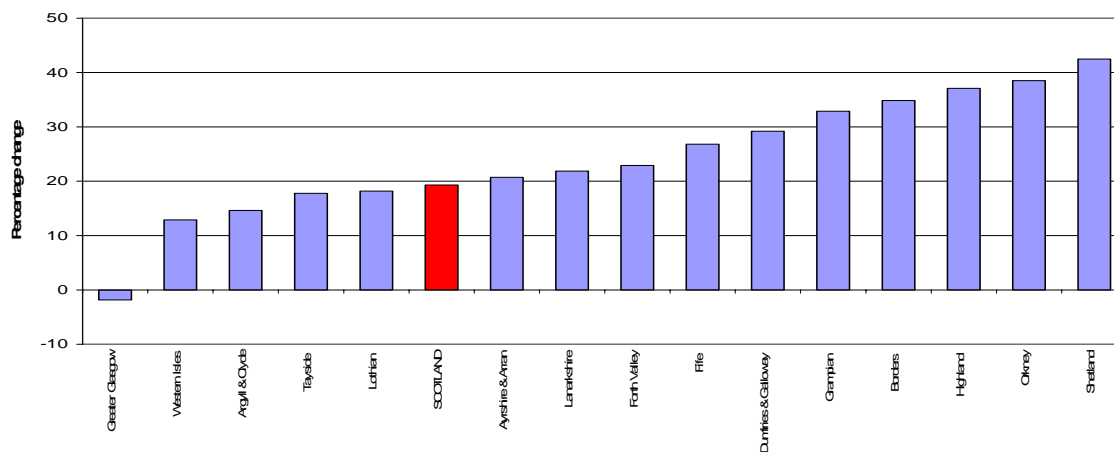


Figure 5b Projected percentage change in population of working age(16-59/64)¹ (2004-based), by NHS board area, 2004-2024



¹Includes change in women's state pension age from 60 to 65 between 2010 and 2020.

Figure 5c Projected percentage change in population aged 60/65+ (2004-based), by NHS board area, 2004-2024



¹Includes change in women's state pension age from 60 to 65 between 2010 and 2020.

Table A Projected percentage change in population (2004-based), by broad age group and council areas, 2004-2024

Area	All ages	0-15	16-59/64 ¹	60/65+ ¹
SCOTLAND	1	-12	-1	19
Council areas sorted				
Aberdeen City	-18	-35	-22	10
Eilean Siar	-15	-31	-20	13
Dundee City	-14	-20	-15	-5
Inverclyde	-14	-29	-16	8
Shetland Islands	-11	-40	-17	42
East Dunbartonshire	-11	-31	-14	20
West Dunbartonshire	-9	-21	-10	10
Renfrewshire	-9	-20	-11	12
Angus	-5	-25	-12	29
North Ayrshire	-5	-24	-10	27
Glasgow City	-4	-13	0	-13
East Ayrshire	-3	-16	-5	17
South Ayrshire	-2	-13	-7	18
Dumfries & Galloway	-2	-21	-9	29
Midlothian	-2	-10	-6	19
Orkney Islands	-2	-34	-6	39
Clackmannanshire	-1	-14	-7	32
Moray	-1	-21	-3	25
North Lanarkshire	0	-11	-1	20
East Renfrewshire	3	-16	2	27
Highland	4	-14	-2	37
Argyll & Bute	4	-14	3	20
South Lanarkshire	4	-10	3	23
Aberdeenshire	5	-20	-2	57
Stirling	6	-5	3	23
Perth & Kinross	6	-9	1	31
Falkirk	7	-7	8	20
Fife	9	0	6	27
Edinburgh, City of	10	3	12	8
East Lothian	13	-1	13	26
Scottish Borders	15	7	10	35
West Lothian	21	6	20	47

1. Includes the change in women's state pension age between 2010 and 2020.

The preceding paragraphs describe the projected percentage change by administrative area. It is also useful to look at the existing and projected age structure of the different areas. **Figure 6a and Figure 6b** and **Figure 7a and Figure 7b** show the proportion of the population aged 0-15, 16-64 and 65+ in 2004 and 2024 for council and NHS board areas respectively. The projected proportion of the population of Scotland aged 65 and over increases from 16 per cent in 2004 to 23 per cent in 2024. The pattern is similar in nearly all areas. Amongst council areas in 2004, Dumfries & Galloway (20 per cent) has the highest proportion of its population aged 65 and over and West Lothian the lowest (12 per cent). The projected picture by 2024 shows Dumfries & Galloway still highest at 31 per cent but the cities Edinburgh (17 per cent) and Glasgow (16 per cent) now have lower projected proportions of their populations aged 65 and over than West Lothian (18 per cent).

Figure 6a Age structure of council areas in 2004: 0-15,16-64, and 65+ (%)

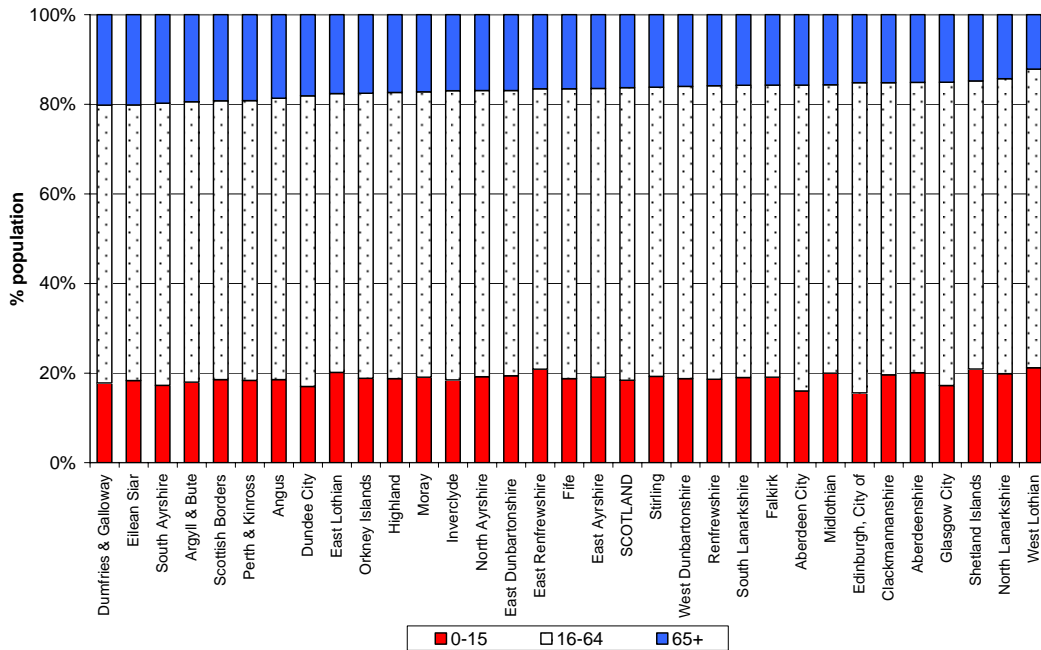
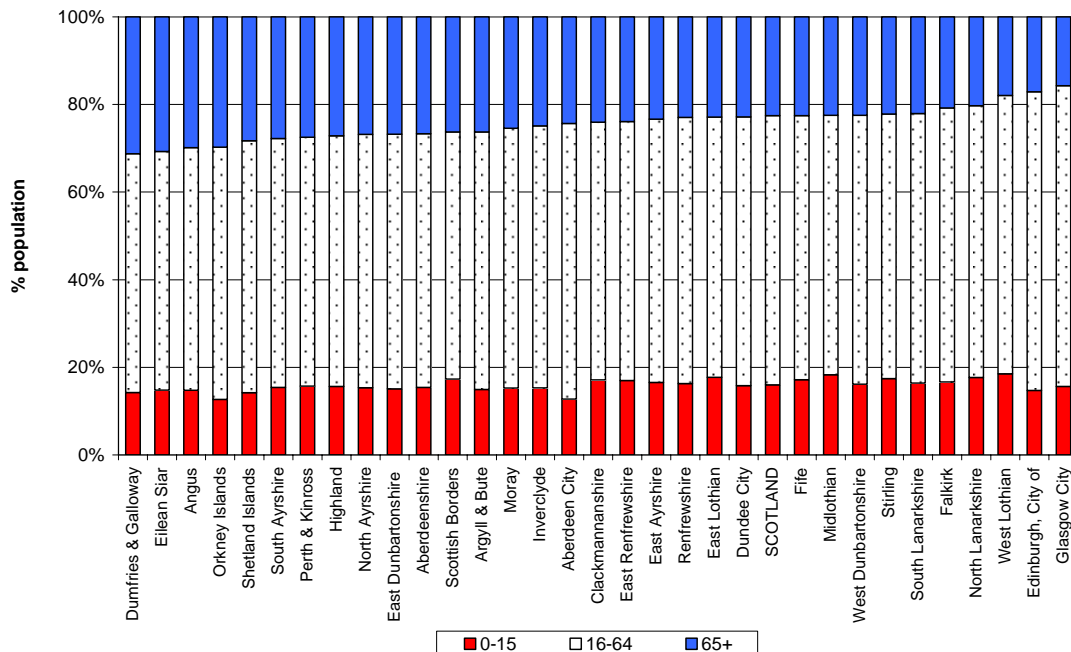


Figure 6b Projected age structure of council areas in 2024 (2004-based): 0-15, 16-64 and 65+ (%)



For NHS board areas a comparable pattern can be seen. In 2004, Dumfries & Galloway NHS board area has the highest proportion of its population aged 65 and over (20 per cent) and it is still projected to have the highest proportion by 2024 (31 per cent). The area with the lowest proportion of its population aged 65 and over in 2004 is Shetland and in 2024 is Lothian. The proportion of Lothian's population aged 65 and over has increased from 15 per cent to 19 per cent and Shetland's has increased from 15 per cent to 28 per cent between 2004 and 2024. A key point from all four charts is that the population in nearly all areas is projected to age by 2024.

Figure 7a Age structure of NHS board areas in 2004: 0-15, 16-64 and 65+ (%)

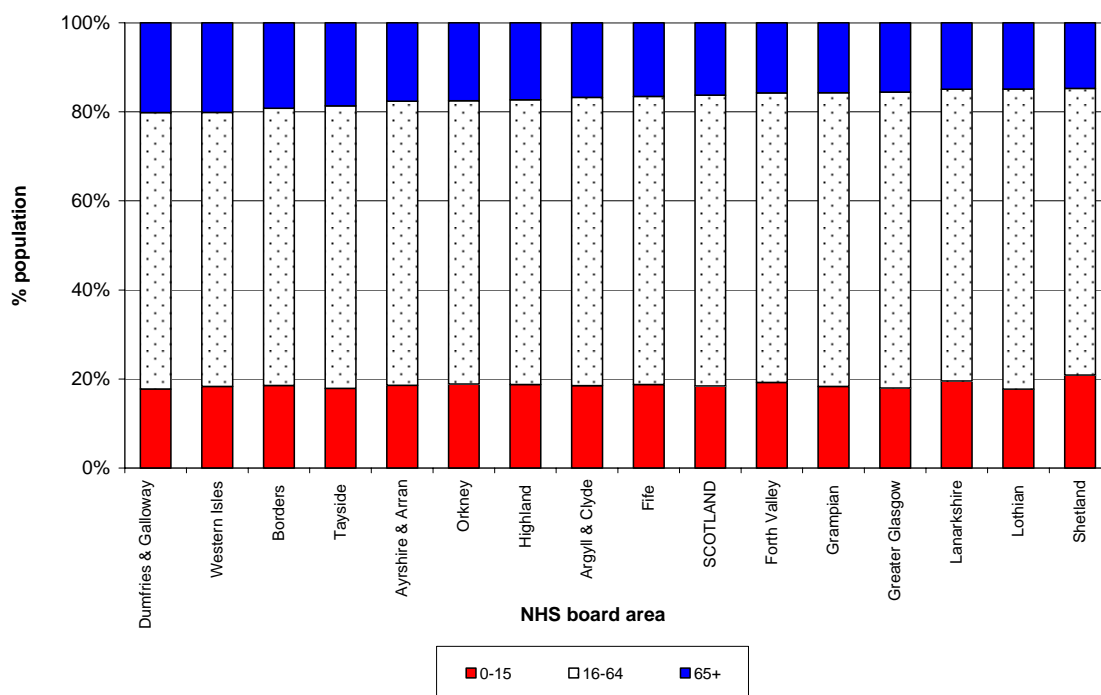
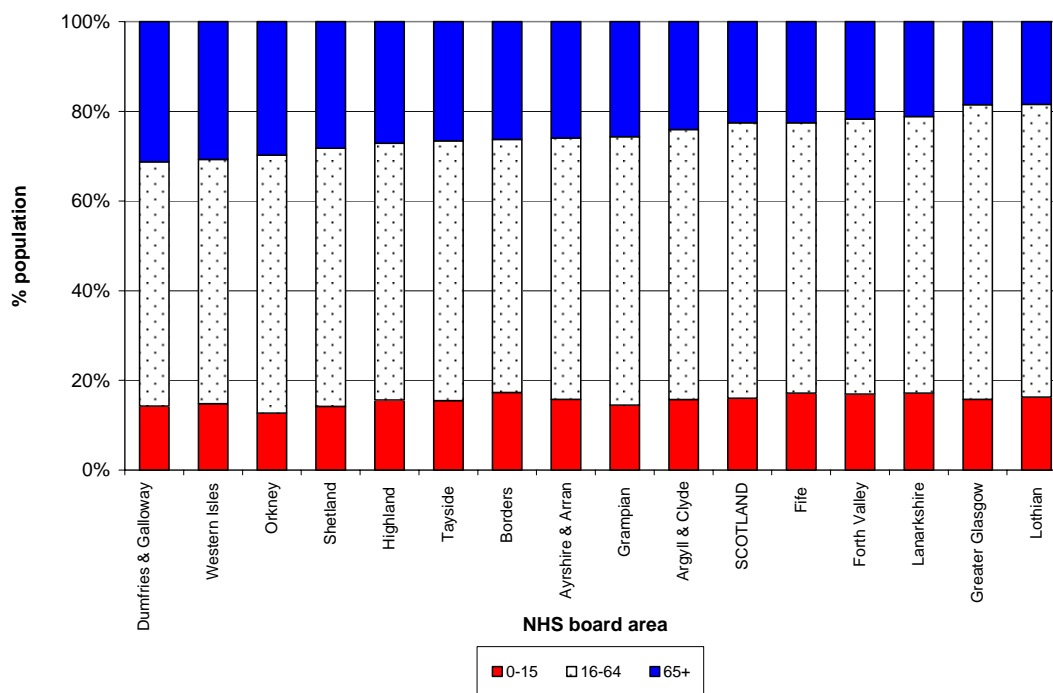


Figure 7b Projected age structure of NHS board areas in 2024 (2004-based): 0-15, 16-64 and 65+ (%)



3. Comparisons with the 2002-based projections

3.1 The differences between the latest sub-national projections and the previous 2002-based projections are summarised in **Table 5** which compares the populations of administrative areas under the two projections at selected years (i.e. 2004, 2010, 2014 and 2018).

3.2 For Scotland, the 2002-based projection projected Scotland's population to be 5.04 million by 2004 compared with the 2004 mid-year estimate of 5.08 million. The difference of about 40,000, is due to more births, fewer deaths and more people migrating to Scotland than had been assumed. By 2010 the difference between Scotland's population under the two projections increases to about 127,000, though some of the difference is accounted for by the higher starting population in 2004. The difference by 2018 has increased to about 193,000 (from 4.94 million under the 2002-based projection to 5.13 million under the 2004-based projection). There are similar differences by administrative areas under the two projections. These differences are easier seen in **Figure 8** and **Figure 9** which show the percentage change between the 2002 and 2004-based population projections in the population projected for 2018 by council area and NHS board area respectively.

Figure 8 Percentage change between 2002 and 2004-based population projections in 2018, by council area

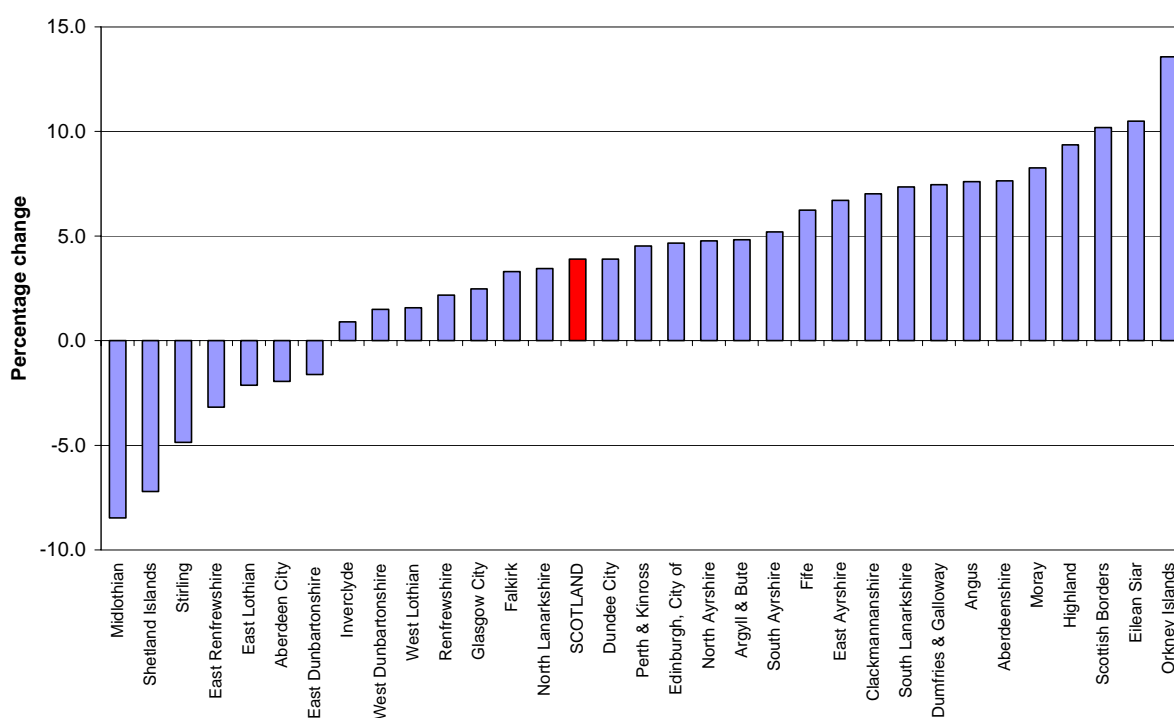
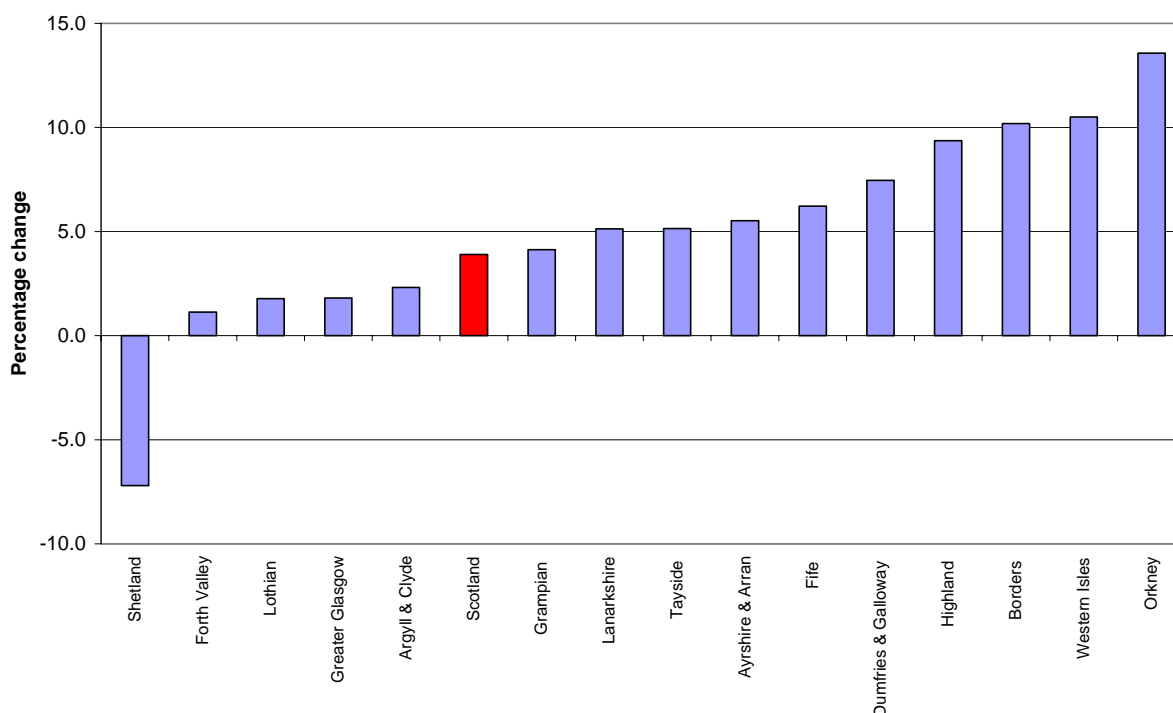


Figure 9 Percentage change between 2002 and 2004-based population projections in 2018, by NHS board area



3.3 **Figure 8** shows that by 2018 the population for most council areas is higher under the 2004-based projection than under the 2002-based projection except in 7 areas (Midlothian, Shetland Islands, Stirling, East Renfrewshire, East Lothian, Aberdeen City, and East Dunbartonshire). The other council areas have larger populations with the biggest percentage increases in the Orkney Islands, Eilean Siar and Scottish Borders. **Figure 9** shows that by 2018 all the NHS boards have higher populations under the 2004-based projection except the Shetland Islands where the population is lower than that under the previous 2002-based projection. These changes have come about because of the different starting point (the 2004 mid-year estimate) and also the changes to the fertility, mortality and migration assumptions. When looking at the comparisons between the projections it is important to bear in mind the uses and limitation of projections described in **Section 5**. More details about the assumptions can be found in **Section 4**.

4. Methodology and assumptions

4.1 Methodology

4.1.1 The results are produced by the demographic component method using a single year projection model (**see paragraph 4.1.2**). That is, a projection is made by sex and single year of age (up to age 90 & over) for each future year. This is done for arithmetical convenience and should not be taken to imply that reliable projections can be made in such detail. However, it provides "building blocks" which users can aggregate into age-groups of their choice for the years in which they are interested.

For example, the production of results in standard five-year age groups (0-4, 5-9, 10-14, etc.) does not help the education planner wishing to know the size of the future population of secondary school age. Also, as some planning is done on a "rolling" basis (for example 10 years from a moving base date), it is useful to be able to provide a projection for any future year rather than just selected years.

4.1.2 The projection starts with the population estimates for the base year, disaggregated by single year of age, sex, and area. This base population is then projected one year ahead. First, an estimate of the numbers surviving to be one year older is made by applying a series of mortality rates to give the numbers of deaths, and hence survivors, at each age. The numbers of live births in the year are produced, using fertility rates in combination with the female populations of child bearing age; and an allowance is made for infant mortality. Lastly, the expected number and age/sex structure of people entering and leaving the area is taken into account in order to cover changes in the population due to migration. These three components of population change, together with the starting population, combine to form a projection of the population one year from the base date. The process can be repeated as often as required. For each year of the projection period, it is necessary to make assumptions about the future fertility rates (to give the number of births), mortality rates (for deaths) and migration. The following paragraphs describe the base population, the small changes made to the software and the method compared with previous projections as well as the assumptions made in the new projections.

4.2 Base population

The Registrar General's mid-2004 population estimates were used as the base population. These were first published in April 2005 but were revised in July 2007 and it is these revised figures which are used as the base population. These cover all persons usually resident in each area, whatever their nationality. Usual residents temporarily away from home are included, but visitors are excluded. Students are taken to be resident at their term-time address. Members of HM and non-UK Armed Forces stationed in Scotland are included; HM forces stationed outside Scotland are excluded. Population figures relate to 30 June 2004 and ages relate to age last birthday. More information on the revised population estimates can be found on the GROS website:

<http://www.gro-scotland.gov.uk/statistics/publications-and-data/population-estimates/revised-mid-year-population-estimates-2003-2006.html>

4.3 Projections software system and other small method changes

The software used to produce the population projections is an in-house MS Excel macro system which has been developed over a number of years. The system runs on 36 "building bricks" – areas which aggregate to both council and NHS board areas. The availability of small area population estimates for data zones has meant that the input data for the system can now be aggregated from these estimates. However, as data zones do not nest exactly in to NHS board areas (they are only "best fit"), small adjustments have been made to the projection results based on the difference between the aggregated NHS board populations from data zones and those estimated on the correct boundaries for the mid-year population estimates. These small adjustments mean that the projections presented in this paper for NHS board areas are very close to the correct boundaries.

4.4 Fertility

The projected number of births was obtained by applying age specific fertility² rates to the numbers of women at each childbearing age, for each year of the projection period. In determining the fertility rates used in the national projections for Scotland, assumptions were made about the average completed family size for successive generations of women. This measure tends to be more stable over time than fertility rates for specific years (so called period fertility rates), because of generational differences in the timing of having families. It was assumed that the average completed family size will continue to decline from around 1.90 children per woman for those born in the late 1950s and now reaching the end of their childbearing lives, before levelling off at 1.60 for those born in the 1990s and later. A downward trend in the number of births is expected, to a projected level of about 49,000 by 2024. The underlying assumptions of average completed family size for the current projections are shown in **Table B**. The resultant age specific fertility rates assumed for Scotland as a whole are given in **Annex A**. More information on the fertility assumptions for Scotland can be found in Annex A to the publication “Projected Population of Scotland (2004-based)” on the GROS website.

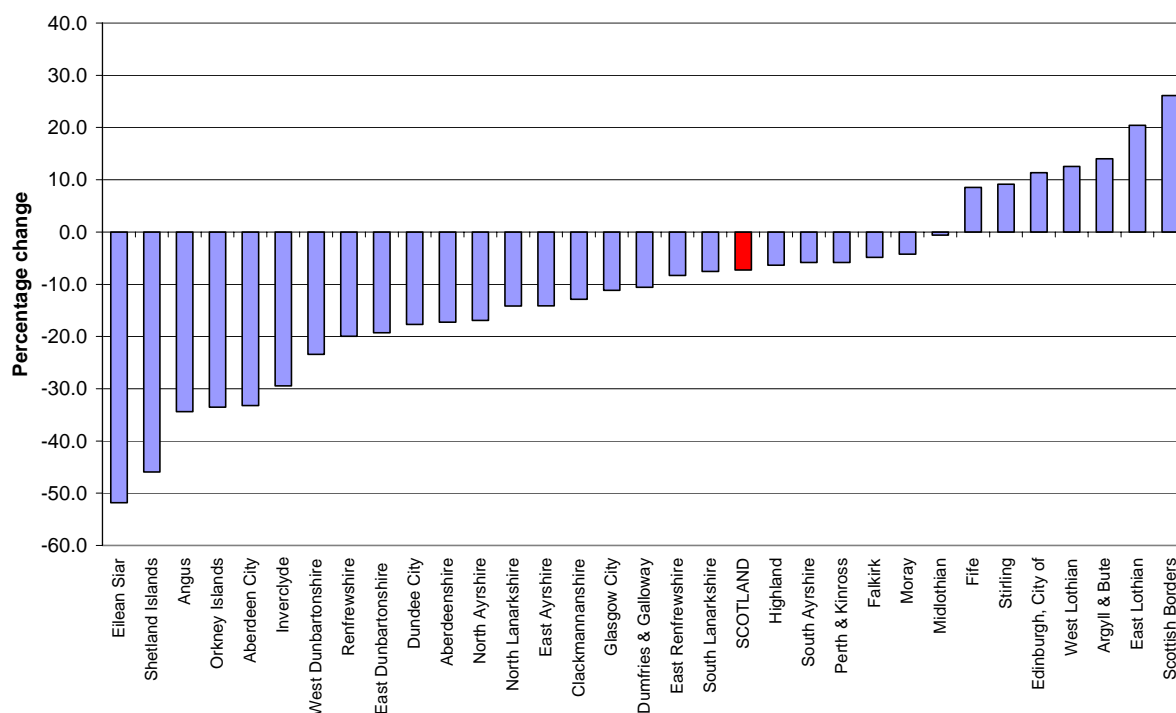
Table B Average completed family size assumptions

Women born at beginning of calendar year	Assumed average completed family size	Average family size completed by mid-2004	Average age at motherhood (years)
1950	2.08	2.08	26.1
1955	1.95	1.95	26.7
1960	1.87	1.87	27.4
1965	1.80	1.75	28.1
1970	1.71	1.43	28.6
1975	1.64	0.89	29.0
1980	1.63	0.44	29.1
1985	1.62	0.13	29.2
1990	1.61	-	29.2
1995	1.60	-	29.3
2000 & later	1.60	-	29.3

The projected number of births by administrative area is shown in **Table 4**. The percentage change in the number of projected births between 2004 and 2024 by council area is also shown in **Figure 10**.

² Fertility in this paper refers to the demographic number of children that would be born rather than the common usage of the term referring to biological fertility.

Figure 10 Projected percentage change in births (2004-based), by council area, 2004-2024



For local areas, the assumed national fertility rates have been adjusted to take account of local variations observed in the five year period preceding the projection, as recommended by the Population and Migration Statistics Committee (PAMS) rather than the three year period used in previous projection rounds. The local scaling factors used to adjust the national rates are given in **Annex C**.

4.5 Mortality

The projected number of deaths each year was calculated by applying mortality rates by age and sex to the appropriate sub-populations. The national rates for the first year of the projections, 2003-04, were based on autumn 2005 estimates of the numbers of deaths at each age in that period. The mortality rates for later years were based on long-term trends up to 2003-04. Future improvements in mortality rates are based on the trend observed in the period 1961 to 2003. It is assumed that annual rates of reduction in mortality rates will tend toward a common reduction at each age of 1 percent a year by 2029. Thereafter, the mortality improvement is assumed to continue at this rate (in contrast to the previous projections where it was assumed to halve every subsequent twenty-five years). In line with long-term trends, it has been assumed that the mortality rates for Scotland will continue to be higher at most ages than those for England and Wales.

Based on these rates, expectation of life at birth is projected to increase from 74.3 in 2003-04 to 78.3 in 2023-24 for males; and from 79.4 in 2003-04 to 82.8 in 2023-24 for females. The national mortality rates are shown, for selected ages and for selected years of the projection, in **Annex B**.

Similar to the fertility assumptions for local areas, the assumed national mortality rates have been adjusted to take account of local variations observed in the five year period (rather than the three year period) preceding the projections. The local

scaling factors used to adjust the national rates are shown in **Annex C**. More information on the mortality assumptions for Scotland can be found in Annex B to the publication “Projected Population of Scotland (2004-based)” on the GROS website.

4.6 Migration

Assumptions about future levels of migration to and from Scotland were based on analysis of trends in civilian migration to and from the UK and between the four constituent countries of the UK. Reflecting the most recent information, the latest projections assume net in-migration of 4,000 from 2007-08 onwards; the previous sub-national projections, assumed net out-migration of -1,500 per year for the long-term. In the first three years of the new projection higher net inflows are assumed, reflecting these recent trends. It is assumed that in the short-term there will be a net inflow of 21,000 migrants to Scotland in 2004-2005, 13,500 in 2005-2006 and 8,500 in 2006-2007 before the level drops to an assumed net inflow of 4,000 for the rest of the projection period. This reflects recent increases in the number of people migrating to Scotland, after many years when net out-migration was the norm. More information on the migration assumptions for Scotland can be found in Annex C to the publication “Projected Population of Scotland (2004-based)” on the GROS website.

The net migration assumptions for local areas were made after consultation with other central government departments and local authorities. They are based on an analysis of recent trends in migration. The assumptions for each area are shown in **Annex D**. It is important to remember that the local assumptions have to match the totals used in the national projections and that for the longer term, migration assumptions are highly speculative. The trends in net migration for the previous five years are shown in **Annex E**.

Council and NHS board area specific age/sex distributions have been assumed for the in- and out- migrant flows using information from the National Health Service Central Register (NHSCR) – on movements of patients between the lists of GPs - observed in the previous three years and 2001 Census migration data flows. These distributions have been made consistent with the age/sex distribution used for Scotland in the national projection.

5. Uses and limitations of projections

5.1 Population projections have limitations. A projection is a calculation showing what happens if particular assumptions are made. The sub-national population projections are trend-based. They are, therefore, not policy-based forecasts of what the government expects to happen. Many social and economic factors influence population change including policies adopted by both central and local government. The relationships between the various factors are complex and largely unknown. A single projection for each area is given in this publication, but this is not a confident forecast of what will happen and it is not possible to define helpful statistical limits within which the outturn is likely to fall.

5.2 The effect of the assumptions - about future migration, fertility and mortality - is often limited in the sense that there is considerable inertia in population change. The future population of an area is strongly influenced by the initial base population. Because the process of change is cumulative, the reliability of projections decreases over time. Change affects some populations more rapidly and more seriously than others. Thus, projections for areas with small populations tend to be less reliable than those for areas with large populations, because the former are usually affected more by migration. Projections of the number of adults (particularly elderly people) are usually more reliable than those for children because of difficulties in projecting levels of fertility and parental migration. The size of the migration flows, and the uncertainty of future trends, are such that for many areas the migration assumptions are more critical than the fertility and mortality assumptions. Hence the migration assumptions can have a large effect on small populations in the long-term (e.g. the Shetland Islands) and also for some other areas with larger populations (e.g. Aberdeen City).

5.3 Central government population projections set local and regional population patterns into a national context. They are trend-based. However, it should be remembered that new local planning policies are often intended to modify past trends. Structure plans may be based on reasoned and agreed departures from the projections that seem better able to fit particular local circumstances.

6. Consequences of projections

Population projections, like some other types of projections, may indicate that existing trends and policies are likely to lead to outcomes, which are judged undesirable. If new policies are then introduced, they may result in the original projections not being realised. However, this means the projections will have fulfilled one of their prime functions, to show the consequences of present demographic trends with sufficient notice for any necessary action to be taken.

7. Further information

Sub-national projections

The projections for the administrative areas of Scotland summarised in this booklet are also available by single year of age and sex for each year of the projection period, 2004 to 2024 from the detailed tables on the GROS website. They are also available from GROS customer Services:

Statistics Customer Services
General Register Office for Scotland
Ladywell House,
EDINBURGH, EH12 7TF.
Telephone: 0131 314 4243 Fax: 0131 314 4696
Email: customer@gro-scotland.gsi.gov.uk

National projections

National population projections for Scotland are prepared on a regular basis by the Government Actuary, in consultation with, and at the request of, the Registrar General. The latest projections, to which the sub-national projections in this booklet have been made consistent, are based on the mid-2004 population estimates. The projections cover the period to 2074 and are available by single year of age and sex for each year of the projection period. More detailed data is available from the GAD website (www.gad.gov.uk) or **by contacting GAD** at:

Government Actuary's Department
Finlaison House
15-17 Furnival Street
London, EC4A 1AB
Telephone: 020 7211 2622 Fax: 020 7211 2640
Email: natpopproj@ons.gsi.gov.uk

Other related data available from the Demography branch, GROS

Estimates of the resident population of Scotland are prepared by GROS on an annual basis. They are available by sex and single year of age for each of the administrative areas of Scotland. The estimates relate to 30 June of the year covered and, generally, they are released during April of the following year. A substantial amount of historical data is available. Information is also available on a wide range of related topics such as migration estimates and data from the 2001 and earlier Censuses of Population.

The papers and minutes of the SCOTSTAT Population and Migration Statistics Committee (PAMS) are also available on the GROS website through the following link:

<http://www.gro-scotland.gov.uk/statistics/user-consultation-groups-seminars/pams/index.html>.

On 9 November 2005 a population and household projections seminar was held to discuss methods used across the UK. The presentations are available from the GROS website through the following link:

<http://www.gro-scotland.gov.uk/statistics/user-consultation-groups-seminars/seminars/pop-and-house-proj/index.html>

Table 1 Projected population by council and NHS board area (2004-based), 2004-2024

																					(persons)		
Area	2004	2005	2006	2007	2008	2009	2010	2011	2012	2013	2014	2015	2016	2017	2018	2019	2020	2021	2022	2023	2024	Area	
SCOTLAND	5,078,400	5,097,084	5,108,472	5,114,472	5,115,725	5,116,969	5,118,250	5,119,591	5,120,983	5,122,387	5,123,769	5,125,071	5,126,228	5,127,169	5,127,798	5,128,022	5,127,717	5,126,770	5,125,042	5,122,454	5,118,926	SCOTLAND	
Council areas																						Council areas	
Aberdeen City	205,710	204,079	202,415	200,711	199,059	197,388	195,675	193,937	192,163	190,358	188,523	186,655	184,760	182,825	180,851	178,838	176,790	174,701	172,565	170,398	168,184	Aberdeen City	
Aberdeenshire	231,570	234,060	235,755	236,865	237,594	238,262	238,879	239,435	239,948	240,405	240,819	241,187	241,514	241,800	242,051	242,257	242,412	242,513	242,566	242,569	242,495	Aberdeenshire	
Angus	108,350	109,013	109,313	109,388	109,181	108,943	108,687	108,403	108,087	107,753	107,388	106,999	106,579	106,142	105,690	105,200	104,689	104,155	103,600	103,010	102,393	Angus	
Argyll & Bute	91,190	91,759	92,093	92,270	92,349	92,446	92,547	92,649	92,783	92,922	93,075	93,234	93,414	93,594	93,778	93,974	94,174	94,362	94,532	94,685	94,829	Argyll & Bute	
Clackmannanshire	48,240	48,656	48,867	48,956	48,937	48,902	48,858	48,814	48,759	48,697	48,632	48,559	48,479	48,386	48,294	48,191	48,086	47,969	47,849	47,723	47,581	Clackmannanshire	
Dumfries & Galloway	147,930	148,567	148,832	148,956	148,837	148,689	148,536	148,369	148,188	147,992	147,786	147,569	147,344	147,105	146,842	146,564	146,266	145,937	145,577	145,192	144,773	Dumfries & Galloway	
Dundee City	142,170	141,087	140,035	138,992	137,960	136,944	135,938	134,953	133,975	133,010	132,056	131,111	130,169	129,247	128,325	127,381	126,421	125,452	124,469	123,455	122,418	Dundee City	
East Ayrshire	119,720	119,841	119,806	119,704	119,547	119,386	119,213	119,048	118,884	118,708	118,527	118,352	118,166	117,964	117,759	117,544	117,323	117,085	116,816	116,525	116,209	East Ayrshire	
East Dunbartonshire	106,550	106,157	105,748	105,313	104,854	104,379	103,880	103,370	102,859	102,323	101,782	101,226	100,649	100,056	99,445	98,813	98,159	97,487	96,787	96,058	95,306	East Dunbartonshire	
East Lothian	91,580	92,108	92,631	93,140	93,634	94,127	94,628	95,136	95,657	96,191	96,739	97,297	97,897	98,515	99,146	99,792	100,451	101,123	101,805	102,487	103,153	East Lothian	
East Renfrewshire	89,610	89,719	89,861	90,039	90,239	90,420	90,594	90,770	90,934	91,098	91,259	91,409	91,564	91,702	91,838	91,973	92,087	92,195	92,264	92,318	92,354	East Renfrewshire	
Edinburgh, City of	453,670	457,966	461,184	463,565	465,094	466,728	468,463	470,287	472,212	474,203	476,256	478,367	480,505	482,662	484,826	486,990	489,131	491,236	493,297	495,313	497,274	Edinburgh, City of	
Eilean Siar	26,260	26,378	26,345	26,272	26,096	25,910	25,718	25,522	25,321	25,120	24,915	24,707	24,476	24,249	24,006	23,757	23,503	23,251	22,984	22,714	22,431	Eilean Siar	
Falkirk	147,460	148,755	149,665	150,312	150,809	151,297	151,793	152,287	152,778	153,264	153,745	154,216	154,675	155,129	155,566	156,010	156,440	156,845	157,238	157,619	157,968	Falkirk	
Fife	354,600	357,001	359,018	360,662	362,073	363,494	364,944	366,422	367,940	369,488	371,060	372,651	374,265	375,896	377,528	379,154	380,763	382,345	383,890	385,395	386,849	Fife	
Glasgow City	577,670	577,441	576,675	575,357	573,431	571,682	570,096	568,645	567,307	566,056	564,881	563,744	562,637	561,534	560,440	559,243	558,053	556,794	555,455	554,025	552,519	Glasgow City	
Highland	211,340	213,257	214,641	215,440	215,841	216,227	216,580	216,905	217,215	217,497	217,762	218,007	218,227	218,429	218,598	218,743	218,862	218,943	218,992	218,999	218,956	Highland	
Inverclyde	82,430	81,846	81,261	80,723	80,190	79,659	79,126	78,592	78,049	77,522	76,996	76,457	75,923	75,385	74,841	74,275	73,699	73,095	72,478	71,841	71,191	Inverclyde	
Midlothian	79,610	79,516	79,408	79,343	79,269	79,193	79,118	79,043	78,968	78,883	78,806	78,733	78,665	78,590	78,517	78,441	78,352	78,264	78,159	78,039	77,912	Midlothian	
Moray	86,740	87,033	87,109	87,153	87,136	87,103	87,064	87,005	86,948	86,891	86,828	86,766	86,697	86,636	86,574	86,442	86,371	86,289	86,187	86,079	85,961	Moray	
North Ayrshire	136,020	136,045	135,955	135,784	135,543	135,285	135,009	134,719	134,410	134,087	133,754	133,406	133,042	132,657	132,266	131,849	131,400	130,921	130,416	129,877	129,301	North Ayrshire	
North Lanarkshire	322,790	323,512	324,019	324,336	324,513	324,666	324,808	324,931	325,020	325,106	325,176	325,228	325,256	325,255	325,209	325,129	324,995	324,817	324,592	324,312	323,958	North Lanarkshire	
Orkney Islands	19,500	19,665	19,779	19,839	19,834	19,828	19,812	19,800	19,775	19,752	19,712	19,671	19,628	19,580	19,529	19,475	19,419	19,345	19,273	19,190	19,111	Orkney Islands	
Perth & Kinross	137,430	138,730	139,614	140,263	140,670	141,065	141,454	141,819	142,172	142,518	142,855	143,187	143,517	143,823	144,135	144,440	144,724	144,981	145,224	145,438	145,624	Perth & Kinross	
Renfrewshire	170,610	170,269	169,804	169,261	168,603	167,925	167,243	166,547	165,837	165,118	164,388	163,640	162,875	162,095	161,300	160,483	159,653	158,796	157,904	156,971	156,011	Renfrewshire	
Scottish Borders	109,270	110,288	111,159	111,961	112,701	113,442	114,187	114,944	115,712	116,489	117,287	118,097	118,920	119,748	120,591	121,440	122,312	123,180	124,051	124,923	125,784	Scottish Borders	
Shetland Islands	21,940	21,987	21,976	21,952	21,871	21,785	21,696	21,588	21,471	21,352	21,208	21,068	20,923	20,772	20,613	20,436	20,258	20,073	19,887	19,685	19,463	Shetland Islands	
South Ayrshire	111,850	112,097	112,202	112,091	111,916	111,746	111,573	111,413	111,248	111,091	110,928	110,778	110,623	110,475	110,305	110,136	109,954	109,773	109,566	109,328	109,083	South Ayrshire	
South Lanarkshire	305,410	307,493	309,019	310,047	310,695	311,306	311,895	312,475	313,052	313,616	314,170	314,688	315,199	315,682	316,147	316,573	316,933	317,264	317,546	317,782	317,959	South Lanarkshire	
Stirling	86,370	86,459	86,586	86,758	86,958	87,175	87,394	87,622	87,856	88,094	88,345	88,598	88,868	89,150	89,438	89,728	90,021	90,311	90,594	90,877	91,145	Stirling	
West Dunbartonshire	91,970	91,656	91,318	90,980	90,603	90,227	89,855	89,492	89,136	88,779	88,421	88,048	87,660	87,269	86,853	86,438	85,983	85,518	85,029	84,523	83,980	West Dunbartonshire	
West Lothian	162,840	164,644	166,379	168,039	169,688	171,340	172,987	174,649	176,327	178,004	179,690	181,402	183,112	184,817	186,534	188,249	189,962	191,668	193,348	195,002	196,633	West Lothian	
NHS board areas																						Health board areas	
Argyll & Clyde	415,658	415,152	414,283	413,221	411,957	410,683	409,422	408,141	406,864	405,589	404,319	403,022	401,721	400,388	399,022	397,628	396,186	394,669	393,065	391,359	389,585	Argyll & Clyde	
Ayrshire & Arran	367,590	367,983	367,963	367,579	367,006	366,417	365,795	365,180	364,542	363,886	363,209	362,536	361,831	361,096	360,330	359,523	358,677	357,779	356,798	355,730	354,593	Ayrshire & Arran	
Borders	109,270	110,288	111,159	111,961	112,701	113,442	114,187	114,944	115,712	116,489	117,287	118,097	118,920	119,748	120,591	121,440	122,312	123,180	124,051	124,923	125,784	Borders	
Dumfries & Galloway	147,930	148,567	148,832	148,956	148,837	148,689	148,536	148,369	148,188	147,992	147,786	147,569	147,344	147,105	146,842	146,564	146,266	145,937	145,577	145,192	144,773	Dumfries & Galloway	
Fife	354,619	356,920	358,937	360,581	361,992	363,413	364,863	366,341	367,859	369,407	370,979	372,570	374,184	375,815	377,447	379,073	380,682	382,264	383,809	385,314	386,768	Fife	
Forth Valley	281,764	283,564	284,812	285,720	286,398	287,068	287,739	288,417	289,087	289,749	290,416	291,067	291,716	292,359	292,992	293,623	294,241	294,819	295,375	295,913	296,388	Forth Valley	
Grampian	524,020	525,172	525,279	524,729	523,789	522,753	521,618	520,377	519,059	517,654	516,17												

Table 2 Projected population (2004-based) by sex and broad age group, council and NHS board areas, selected years

Age group	2004			2010			2014			2024		
	Persons	Males	Females	Persons	Males	Females	Persons	Males	Females	Persons	Males	Females
SCOTLAND												
All Ages	5078.4	2446.2	2632.2	5118.3	2469.5	2648.7	5123.8	2472.6	2651.2	5118.9	2463.8	2655.1
0-15	935.5	478.7	456.8	873.1	445.7	427.4	844.7	430.2	414.5	819.6	417.1	402.6
16-29	881.0	444.0	437.0	931.5	471.8	459.7	917.0	466.1	450.8	807.2	409.1	398.2
30-49	1502.1	726.8	775.2	1416.5	682.2	734.3	1345.7	648.3	697.3	1262.6	616.9	645.7
50-64	933.3	456.0	477.2	1012.5	491.7	520.8	1046.2	502.9	543.4	1074.9	505.0	570.0
65-74	455.1	206.6	248.5	477.0	221.4	255.6	528.8	248.5	280.4	585.2	273.7	311.5
75+	371.5	134.1	237.4	407.6	156.7	250.9	441.3	176.6	264.8	569.3	242.1	327.3
Council areas												
Aberdeen City												
All Ages	205.7	101.2	104.5	195.7	97.3	98.4	188.5	94.5	94.0	168.2	86.0	82.1
0-15	33.0	17.0	16.0	29.1	15.1	14.1	27.0	13.9	13.1	21.5	11.0	10.5
16-29	44.2	22.5	21.7	40.0	20.1	19.9	36.8	18.6	18.2	30.8	16.1	14.7
30-49	61.1	30.9	30.3	55.2	28.8	26.4	50.8	27.1	23.7	38.3	21.6	16.6
50-64	35.1	17.6	17.5	38.6	19.4	19.1	38.6	19.4	19.2	36.8	18.5	18.3
65-74	17.3	7.9	9.5	16.5	7.6	8.8	18.4	8.7	9.6	20.8	10.2	10.6
75+	15.0	5.4	9.6	16.2	6.2	10.0	16.9	6.8	10.1	20.1	8.7	11.4
Aberdeenshire												
All Ages	231.6	114.5	117.0	238.9	118.8	120.1	240.8	120.3	120.5	242.5	122.2	120.3
0-15	46.5	23.8	22.6	43.5	22.5	21.1	41.4	21.4	20.0	37.4	19.4	18.0
16-29	32.0	16.7	15.3	35.0	18.8	16.2	35.2	19.1	16.0	31.1	17.4	13.8
30-49	71.6	35.1	36.5	66.0	32.0	33.9	60.8	29.7	31.1	53.4	27.6	25.8
50-64	46.6	23.6	23.0	53.0	26.6	26.4	54.8	27.2	27.5	55.9	27.1	28.8
65-74	19.2	9.3	9.9	22.7	11.2	11.5	27.5	13.7	13.8	32.9	16.2	16.8
75+	15.7	6.0	9.7	18.6	7.7	10.9	21.2	9.1	12.0	31.8	14.6	17.2
Angus												
All Ages	108.4	52.3	56.0	108.7	52.8	55.8	107.4	52.4	55.0	102.4	50.3	52.1
0-15	20.1	10.3	9.8	19.1	9.8	9.3	18.0	9.3	8.7	15.1	7.9	7.2
16-29	14.9	7.7	7.1	15.0	8.3	6.8	14.7	8.3	6.4	13.1	7.7	5.4
30-49	30.5	14.7	15.9	27.8	13.0	14.8	25.0	11.6	13.4	20.2	9.9	10.3
50-64	22.6	11.1	11.6	24.0	11.6	12.4	24.0	11.5	12.5	23.5	10.7	12.7
65-74	11.0	5.2	5.8	12.2	5.9	6.3	14.0	6.8	7.2	14.7	7.0	7.6
75+	9.3	3.4	5.8	10.6	4.3	6.3	11.6	4.9	6.7	15.9	7.2	8.8
Argyll & Bute												
All Ages	91.2	45.0	46.2	92.5	46.0	46.6	93.1	46.5	46.6	94.8	47.7	47.1
0-15	16.4	8.3	8.1	14.2	7.1	7.1	13.4	6.6	6.7	14.1	7.1	7.1
16-29	12.2	6.9	5.3	15.2	8.5	6.7	16.0	8.9	7.0	12.8	7.2	5.6
30-49	25.3	12.7	12.6	23.4	11.7	11.7	22.1	11.3	10.9	23.8	12.7	11.2
50-64	19.6	9.6	10.0	20.1	9.8	10.3	20.0	9.8	10.2	19.2	9.2	10.0
65-74	9.7	4.5	5.2	10.7	5.2	5.5	11.8	5.7	6.1	11.9	5.9	6.1
75+	8.0	3.0	5.0	8.8	3.5	5.3	9.7	4.1	5.7	13.0	5.7	7.3
Clackmannanshire												
All Ages	48.2	23.4	24.8	48.9	23.6	25.3	48.6	23.4	25.3	47.6	22.4	25.2
0-15	9.5	4.8	4.7	9.0	4.4	4.6	8.7	4.2	4.5	8.2	3.8	4.3
16-29	7.6	3.9	3.7	7.8	4.1	3.7	7.8	4.0	3.8	6.9	3.3	3.5
30-49	14.4	7.0	7.4	13.8	6.7	7.1	12.8	6.2	6.6	10.9	5.2	5.6
50-64	9.4	4.6	4.8	9.9	4.8	5.1	9.8	4.7	5.1	10.3	5.0	5.3
65-74	4.2	2.0	2.2	4.8	2.2	2.6	5.5	2.6	2.9	5.6	2.6	3.0
75+	3.1	1.1	2.0	3.6	1.4	2.2	4.1	1.7	2.4	5.9	2.5	3.4
Dumfries & Galloway												
All Ages	147.9	71.5	76.4	148.5	71.5	77.1	147.8	70.7	77.1	144.8	68.0	76.8
0-15	26.3	13.4	12.9	23.5	11.9	11.6	21.8	11.1	10.8	20.7	10.4	10.2
16-29	19.2	9.8	9.4	20.8	10.8	10.1	21.0	10.8	10.3	16.4	8.3	8.1
30-49	40.9	19.7	21.2	36.8	17.3	19.4	32.8	15.2	17.6	28.7	13.1	15.6
50-64	31.7	15.6	16.1	33.5	16.2	17.3	34.2	16.2	18.0	33.7	15.4	18.3
65-74	16.4	7.8	8.6	18.4	8.8	9.6	20.6	9.9	10.7	21.8	10.2	11.6
75+	13.4	5.1	8.3	15.5	6.4	9.1	17.3	7.4	9.9	23.5	10.5	13.0

© Crown copyright 2007

Table 2 continued

Age group	2004			2010			2014			2024		
	Persons	Males	Females	Persons	Males	Females	Persons	Males	Females	Persons	Males	Females
Dundee City												
All Ages	142.2	67.3	74.8	135.9	64.6	71.4	132.1	62.8	69.2	122.4	58.4	64.0
0-15	24.2	12.4	11.8	21.7	11.1	10.5	20.7	10.6	10.1	19.3	9.9	9.5
16-29	29.9	14.7	15.2	30.0	14.7	15.4	28.8	14.0	14.7	23.7	11.5	12.2
30-49	37.9	17.8	20.1	33.6	15.9	17.7	30.7	14.8	15.9	27.9	13.9	14.0
50-64	24.4	12.0	12.5	25.4	12.3	13.2	25.6	12.1	13.5	23.6	10.8	12.7
65-74	13.7	6.1	7.6	12.9	6.0	6.9	13.6	6.4	7.2	13.7	6.3	7.4
75+	12.0	4.3	7.7	12.4	4.6	7.8	12.7	4.9	7.8	14.2	5.9	8.3
East Ayrshire												
All Ages	119.7	57.7	62.1	119.2	57.6	61.6	118.5	57.3	61.2	116.2	56.1	60.1
0-15	22.9	11.7	11.2	20.8	10.8	10.1	20.2	10.4	9.8	19.3	10.0	9.2
16-29	18.9	9.5	9.4	20.1	10.2	9.9	19.8	10.2	9.5	16.5	8.7	7.8
30-49	35.2	17.0	18.2	32.9	15.7	17.1	30.6	14.5	16.1	27.5	13.0	14.5
50-64	23.1	11.3	11.8	24.1	11.7	12.5	24.5	11.8	12.7	25.8	12.1	13.7
65-74	11.2	5.1	6.1	11.8	5.5	6.3	13.1	6.1	6.9	13.6	6.5	7.1
75+	8.5	3.1	5.4	9.4	3.7	5.7	10.3	4.2	6.1	13.5	5.8	7.7
East Dunbartonshire												
All Ages	106.6	51.3	55.2	103.9	50.6	53.3	101.8	50.1	51.7	95.3	48.1	47.2
0-15	20.7	10.8	9.9	17.7	9.0	8.7	16.2	8.2	8.0	14.4	7.2	7.1
16-29	16.3	8.6	7.8	17.3	9.5	7.8	16.6	9.3	7.3	12.4	7.0	5.4
30-49	30.6	14.4	16.2	26.7	12.8	13.9	24.6	12.2	12.4	23.3	13.0	10.4
50-64	20.9	10.0	10.9	22.3	10.7	11.6	22.6	10.7	11.9	19.7	9.4	10.3
65-74	10.3	4.7	5.5	10.5	4.8	5.7	11.3	5.3	6.0	12.3	5.8	6.5
75+	7.8	2.9	4.9	9.4	3.8	5.6	10.5	4.4	6.1	13.3	5.8	7.5
East Lothian												
All Ages	91.6	43.8	47.8	94.6	45.2	49.5	96.7	45.9	50.8	103.2	48.2	54.9
0-15	18.5	9.3	9.2	17.3	8.7	8.6	16.7	8.4	8.3	18.3	9.3	9.0
16-29	11.9	6.0	5.8	14.6	7.3	7.3	16.0	7.8	8.1	14.9	7.0	7.9
30-49	27.8	13.3	14.5	25.8	12.1	13.7	24.2	11.3	12.9	24.3	11.1	13.2
50-64	17.4	8.4	8.9	19.3	9.3	10.0	20.5	9.7	10.8	22.0	10.0	12.0
65-74	8.6	3.9	4.6	9.2	4.3	4.8	10.2	4.9	5.4	11.8	5.6	6.2
75+	7.5	2.8	4.7	8.4	3.4	5.0	9.1	3.8	5.3	11.8	5.2	6.6
East Renfrewshire												
All Ages	89.6	42.7	46.9	90.6	43.7	46.9	91.3	44.5	46.8	92.4	46.0	46.3
0-15	18.7	9.7	9.0	17.0	8.8	8.2	16.2	8.3	7.9	15.7	8.0	7.6
16-29	13.0	6.7	6.3	14.8	8.0	6.8	15.1	8.4	6.7	13.0	7.5	5.5
30-49	26.5	12.4	14.1	23.7	11.0	12.6	22.3	10.7	11.6	22.7	12.1	10.6
50-64	16.5	7.9	8.6	18.8	9.1	9.7	19.7	9.4	10.2	18.9	8.7	10.2
65-74	8.1	3.6	4.5	8.4	3.7	4.6	9.3	4.2	5.1	10.9	5.1	5.8
75+	6.7	2.4	4.4	7.9	3.0	4.9	8.7	3.4	5.3	11.2	4.6	6.6
Edinburgh, City of												
All Ages	453.7	218.0	235.7	468.5	224.3	244.1	476.3	226.9	249.3	497.3	233.4	263.9
0-15	70.8	36.6	34.2	67.6	34.8	32.8	68.0	34.8	33.2	73.2	37.2	36.0
16-29	106.0	51.7	54.3	112.9	53.6	59.3	109.5	51.8	57.7	100.2	47.1	53.1
30-49	136.5	67.4	69.1	140.1	68.9	71.2	143.3	69.4	73.9	150.2	69.4	80.8
50-64	71.5	34.8	36.7	78.9	38.5	40.5	81.8	39.6	42.2	88.7	42.3	46.4
65-74	35.3	15.7	19.6	34.0	15.5	18.5	37.9	17.5	20.4	43.0	20.1	22.9
75+	33.6	11.9	21.7	34.9	13.0	21.8	35.8	13.9	21.9	42.1	17.4	24.7
Eilean Siar												
All Ages	26.3	12.9	13.4	25.7	12.6	13.1	24.9	12.3	12.6	22.4	11.1	11.3
0-15	4.8	2.4	2.4	4.5	2.3	2.2	4.3	2.2	2.1	3.3	1.7	1.6
16-29	3.4	1.8	1.6	3.2	1.8	1.4	3.0	1.8	1.2	2.3	1.5	0.8
30-49	7.2	3.6	3.6	6.6	3.2	3.4	5.9	2.7	3.1	4.3	2.0	2.3
50-64	5.5	2.8	2.7	5.8	3.0	2.8	5.7	3.0	2.8	5.6	2.8	2.8
65-74	2.8	1.3	1.4	2.9	1.4	1.5	3.3	1.6	1.7	3.4	1.7	1.8
75+	2.5	0.9	1.7	2.6	0.9	1.7	2.8	1.0	1.7	3.5	1.4	2.1

© Crown copyright 2007

Table 2 continued

Age group	2004			2010			2014			2024		
	Persons	Males	Females	Persons	Males	Females	Persons	Males	Females	Persons	Males	Females
Falkirk												
All Ages	147.5	71.2	76.3	151.8	73.0	78.8	153.7	73.6	80.2	158.0	74.5	83.5
0-15	28.2	14.4	13.8	27.4	14.0	13.5	26.9	13.6	13.3	26.3	13.2	13.0
16-29	24.0	12.0	12.0	25.1	12.7	12.4	25.5	13.0	12.4	24.5	12.4	12.2
30-49	44.8	21.8	23.0	44.9	21.4	23.6	43.2	20.1	23.1	39.8	18.1	21.7
50-64	27.3	13.3	14.0	29.2	14.1	15.1	30.5	14.6	15.9	34.6	16.2	18.4
65-74	13.1	6.0	7.1	14.0	6.5	7.5	15.5	7.3	8.2	16.7	7.7	9.1
75+	10.1	3.7	6.4	11.1	4.3	6.7	12.2	5.0	7.3	16.1	6.9	9.2
Fife												
All Ages	354.6	170.6	184.0	364.9	174.5	190.5	371.1	175.9	195.2	386.8	179.3	207.6
0-15	66.5	33.9	32.6	63.6	32.1	31.4	63.2	31.8	31.4	66.5	33.2	33.3
16-29	59.3	29.7	29.6	65.5	32.6	33.0	65.8	32.3	33.5	60.2	28.7	31.4
30-49	102.8	50.0	52.8	98.7	46.9	51.7	95.6	44.7	50.9	95.0	42.8	52.2
50-64	67.3	32.8	34.5	72.4	35.0	37.5	73.8	35.3	38.5	78.0	36.1	41.9
65-74	31.7	14.5	17.2	35.1	16.3	18.7	40.2	18.8	21.5	43.0	19.8	23.2
75+	26.9	9.7	17.2	29.7	11.5	18.2	32.4	13.0	19.4	44.2	18.7	25.6
Glasgow City												
All Ages	577.7	275.1	302.6	570.1	274.1	296.0	564.9	274.1	290.8	552.5	273.3	279.2
0-15	99.5	50.9	48.6	92.2	47.3	44.9	90.0	46.4	43.6	86.5	44.9	41.7
16-29	131.2	64.7	66.5	134.5	66.5	68.0	127.6	63.5	64.1	109.6	54.8	54.7
30-49	174.5	84.6	89.9	169.6	83.3	86.2	166.3	83.4	82.9	163.6	86.3	77.2
50-64	85.4	41.9	43.5	94.5	46.1	48.4	101.9	48.8	53.0	106.1	50.2	55.8
65-74	47.5	20.1	27.4	41.8	18.5	23.3	41.9	19.2	22.7	49.0	22.6	26.4
75+	39.6	13.0	26.5	37.5	12.4	25.1	37.2	12.8	24.5	37.8	14.4	23.4
Highland												
All Ages	211.3	103.3	108.0	216.6	105.1	111.5	217.8	104.8	112.9	219.0	103.2	115.8
0-15	39.7	20.4	19.3	37.2	18.9	18.3	35.7	18.0	17.7	34.2	17.1	17.1
16-29	29.3	15.5	13.8	31.0	16.2	14.8	31.1	16.2	15.0	26.7	13.4	13.3
30-49	61.1	29.6	31.5	57.5	27.4	30.1	53.1	24.9	28.1	47.7	22.2	25.6
50-64	44.6	22.2	22.4	49.0	24.1	24.8	50.5	24.5	26.0	50.9	23.7	27.1
65-74	20.3	9.5	10.8	23.0	10.9	12.1	26.3	12.7	13.7	30.0	14.2	15.9
75+	16.3	6.1	10.2	18.9	7.5	11.5	21.0	8.6	12.5	29.4	12.5	16.8
Inverclyde												
All Ages	82.4	39.2	43.2	79.1	37.8	41.3	77.0	36.9	40.1	71.2	34.3	36.8
0-15	15.2	7.8	7.4	13.6	7.1	6.5	12.6	6.7	5.9	10.9	5.9	5.0
16-29	13.7	6.9	6.8	13.6	7.0	6.7	13.1	6.8	6.3	10.5	5.8	4.7
30-49	24.1	11.5	12.6	21.2	10.1	11.1	18.8	9.0	9.8	15.5	7.8	7.7
50-64	15.4	7.4	7.9	16.4	7.8	8.6	17.2	8.0	9.1	16.6	7.5	9.1
65-74	7.8	3.4	4.4	7.9	3.6	4.4	8.6	3.9	4.7	9.4	4.1	5.2
75+	6.2	2.1	4.1	6.3	2.2	4.1	6.7	2.4	4.3	8.3	3.2	5.1
Midlothian												
All Ages	79.6	37.8	41.8	79.1	37.4	41.7	78.8	37.0	41.8	77.9	35.9	42.0
0-15	15.9	8.1	7.8	14.9	7.5	7.4	14.4	7.2	7.2	14.3	7.2	7.1
16-29	11.9	5.9	6.1	12.7	6.5	6.1	12.8	6.6	6.2	11.1	5.6	5.5
30-49	23.7	11.1	12.6	21.7	9.7	11.9	20.1	8.9	11.2	18.6	8.0	10.6
50-64	15.6	7.5	8.1	16.5	7.9	8.7	16.6	7.8	8.8	16.4	7.5	8.9
65-74	7.1	3.3	3.8	7.4	3.4	4.0	8.4	3.8	4.5	8.9	4.0	4.8
75+	5.3	2.0	3.3	6.0	2.4	3.6	6.5	2.7	3.9	8.6	3.6	5.0
Moray												
All Ages	86.7	43.6	43.1	87.1	44.0	43.1	86.8	44.1	42.7	86.1	44.2	41.9
0-15	16.6	8.6	8.0	14.8	7.7	7.1	13.7	7.1	6.6	13.1	6.8	6.3
16-29	12.8	7.2	5.6	14.9	8.5	6.5	15.9	9.1	6.8	13.6	8.0	5.6
30-49	25.7	13.2	12.5	23.2	11.9	11.3	21.0	11.0	10.1	19.6	10.8	8.7
50-64	16.7	8.2	8.5	17.5	8.6	9.0	17.8	8.7	9.1	17.9	8.6	9.3
65-74	8.3	3.9	4.4	8.9	4.2	4.7	10.0	4.7	5.3	10.7	5.0	5.7
75+	6.6	2.5	4.1	7.7	3.1	4.6	8.4	3.6	4.9	11.2	4.9	6.3

© Crown copyright 2007

Table 2 continued

Age group	2004			2010			2014			2024		
	Persons	Males	Females	Persons	Males	Females	Persons	Males	Females	Persons	Males	Females
North Ayrshire												
All Ages	136.0	64.3	71.7	135.0	64.0	71.0	133.8	63.3	70.4	129.3	60.9	68.4
0-15	26.1	13.3	12.8	23.4	11.8	11.6	21.8	10.9	10.9	19.9	9.9	10.0
16-29	21.4	10.5	10.9	22.5	11.5	11.0	22.3	11.5	10.7	18.0	9.3	8.7
30-49	38.7	18.2	20.6	34.9	16.1	18.8	32.0	14.8	17.2	28.1	13.6	14.5
50-64	26.8	12.9	13.9	28.4	13.5	14.9	28.8	13.5	15.3	28.6	12.9	15.7
65-74	13.0	6.0	7.0	14.5	6.7	7.7	16.3	7.6	8.7	17.3	8.0	9.3
75+	10.0	3.5	6.5	11.4	4.3	7.0	12.6	5.1	7.5	17.4	7.3	10.1
North Lanarkshire												
All Ages	322.8	154.9	167.9	324.8	156.1	168.7	325.2	156.3	168.9	324.0	155.5	168.5
0-15	64.2	32.9	31.3	61.8	31.6	30.2	60.3	30.9	29.4	57.3	29.4	27.9
16-29	57.1	28.5	28.5	58.8	30.0	28.8	57.6	29.5	28.2	53.5	27.6	25.9
30-49	98.3	47.1	51.2	92.5	44.1	48.5	88.0	42.0	46.0	79.2	38.5	40.7
50-64	57.1	27.6	29.6	61.6	29.3	32.3	64.4	30.3	34.1	68.3	31.6	36.7
65-74	27.2	12.1	15.1	28.9	13.1	15.8	31.2	14.5	16.7	34.8	15.8	19.0
75+	18.9	6.7	12.2	21.2	8.0	13.2	23.6	9.1	14.5	30.9	12.6	18.3
Orkney Islands												
All Ages	19.5	9.6	9.9	19.8	9.7	10.1	19.7	9.6	10.1	19.1	9.1	10.0
0-15	3.7	1.9	1.8	3.3	1.7	1.6	2.9	1.5	1.5	2.4	1.2	1.2
16-29	2.6	1.3	1.3	2.7	1.5	1.3	2.7	1.5	1.2	2.0	1.2	0.8
30-49	5.6	2.8	2.8	5.3	2.6	2.7	4.8	2.2	2.6	3.9	1.8	2.0
50-64	4.2	2.1	2.1	4.5	2.2	2.3	4.7	2.3	2.4	5.2	2.4	2.8
65-74	1.9	0.9	1.0	2.3	1.1	1.2	2.6	1.2	1.3	2.8	1.3	1.5
75+	1.6	0.6	1.0	1.8	0.7	1.0	2.0	0.8	1.1	2.9	1.3	1.6
Perth & Kinross												
All Ages	137.4	66.6	70.8	141.5	68.8	72.7	142.9	69.6	73.2	145.6	71.1	74.5
0-15	25.2	13.0	12.3	24.3	12.5	11.9	23.7	12.2	11.5	22.9	11.7	11.2
16-29	18.6	9.8	8.8	20.3	10.7	9.5	20.4	10.7	9.6	19.1	10.3	8.8
30-49	39.1	18.9	20.2	36.9	17.8	19.1	34.5	16.7	17.9	31.3	15.5	15.8
50-64	28.2	13.8	14.4	30.6	14.8	15.8	31.4	15.1	16.2	32.3	15.2	17.0
65-74	14.0	6.5	7.5	15.3	7.2	8.1	17.5	8.3	9.1	19.3	9.1	10.2
75+	12.4	4.7	7.7	14.1	5.8	8.3	15.4	6.6	8.9	20.7	9.3	11.4
Renfrewshire												
All Ages	170.6	81.4	89.2	167.2	80.3	87.0	164.4	79.3	85.1	156.0	75.9	80.1
0-15	31.7	16.2	15.6	29.4	14.9	14.5	28.0	14.1	13.9	25.4	12.9	12.6
16-29	28.2	14.2	14.0	29.0	14.9	14.1	28.2	14.6	13.6	24.1	12.3	11.8
30-49	51.8	24.6	27.2	46.5	22.0	24.4	42.0	20.1	21.9	35.5	18.0	17.5
50-64	31.8	15.3	16.5	33.7	16.3	17.4	35.2	17.0	18.2	35.2	16.7	18.5
65-74	15.5	6.9	8.7	16.0	7.3	8.7	17.1	8.0	9.2	18.5	8.7	9.8
75+	11.5	4.2	7.3	12.7	4.9	7.8	13.8	5.5	8.3	17.3	7.3	10.0
Scottish Borders												
All Ages	109.3	52.8	56.5	114.2	54.2	60.0	117.3	54.5	62.8	125.8	55.4	70.4
0-15	20.3	10.3	9.9	19.8	9.9	9.9	19.8	9.8	10.1	21.8	10.6	11.2
16-29	13.7	6.9	6.8	15.8	7.7	8.0	16.9	8.0	8.9	16.6	7.3	9.3
30-49	31.8	15.5	16.3	30.0	14.0	16.0	28.0	12.4	15.6	26.6	10.4	16.1
50-64	22.5	11.1	11.5	25.0	12.0	13.0	26.0	12.3	13.7	27.8	12.3	15.5
65-74	11.4	5.3	6.0	12.8	6.1	6.8	14.7	6.9	7.8	16.5	7.5	9.0
75+	9.6	3.7	5.9	10.8	4.5	6.3	12.0	5.2	6.8	16.6	7.3	9.3
Shetland Islands												
All Ages	21.9	11.1	10.9	21.7	11.1	10.6	21.2	11.0	10.2	19.5	10.5	9.0
0-15	4.6	2.3	2.3	4.1	2.1	2.0	3.7	1.9	1.8	2.8	1.5	1.3
16-29	3.4	1.8	1.5	3.2	1.8	1.4	3.1	1.8	1.3	2.3	1.5	0.8
30-49	6.4	3.2	3.2	6.1	3.1	3.0	5.4	2.8	2.6	4.4	2.6	1.8
50-64	4.3	2.3	2.1	4.5	2.3	2.2	4.6	2.3	2.3	4.5	2.2	2.3
65-74	1.7	0.8	0.9	2.2	1.1	1.1	2.5	1.3	1.2	2.7	1.3	1.4
75+	1.5	0.5	1.0	1.7	0.7	1.0	1.9	0.8	1.1	2.8	1.3	1.5

© Crown copyright 2007

Table 2 continued

Age group	2004			2010			2014			2024		
	Persons	Males	Females	Persons	Males	Females	Persons	Males	Females	Persons	Males	Females
South Ayrshire												
All Ages	111.9	53.4	58.5	111.6	53.4	58.1	110.9	53.2	57.8	109.1	52.2	56.9
0-15	19.3	9.8	9.5	17.8	9.1	8.8	17.2	8.8	8.4	16.8	8.6	8.3
16-29	16.1	8.2	7.9	17.7	9.1	8.6	17.4	8.9	8.5	14.9	7.7	7.2
30-49	31.3	15.0	16.2	27.9	13.4	14.5	25.8	12.4	13.4	23.8	11.5	12.4
50-64	23.0	11.2	11.9	24.1	11.6	12.5	24.2	11.5	12.7	23.2	11.0	12.2
65-74	11.9	5.4	6.5	12.6	5.9	6.8	13.9	6.5	7.4	14.4	6.6	7.8
75+	10.2	3.7	6.5	11.4	4.5	6.9	12.4	5.1	7.3	15.9	6.9	9.0
South Lanarkshire												
All Ages	305.4	145.9	159.5	311.9	149.8	162.1	314.2	151.4	162.8	318.0	154.0	163.9
0-15	58.0	29.5	28.5	55.1	28.0	27.1	53.7	27.3	26.4	52.1	26.7	25.5
16-29	50.7	25.7	25.0	54.0	27.6	26.4	52.9	27.2	25.7	47.5	24.3	23.3
30-49	92.0	43.8	48.2	87.5	41.8	45.8	84.1	40.4	43.7	79.8	39.5	40.3
50-64	56.5	27.2	29.3	62.4	30.1	32.3	65.6	31.5	34.0	68.3	32.5	35.8
65-74	27.3	12.2	15.1	28.7	13.1	15.6	31.3	14.4	16.9	35.9	16.8	19.1
75+	20.8	7.5	13.4	24.1	9.1	14.9	26.6	10.5	16.1	34.2	14.3	20.0
Stirling												
All Ages	86.4	41.2	45.1	87.4	41.6	45.8	88.3	41.9	46.5	91.1	42.7	48.5
0-15	16.7	8.5	8.2	15.6	8.0	7.5	15.2	7.9	7.3	15.9	8.2	7.6
16-29	14.6	7.2	7.4	16.4	8.0	8.4	16.7	7.9	8.8	15.5	7.2	8.3
30-49	24.7	11.7	12.9	22.7	10.4	12.2	21.6	10.0	11.6	21.4	9.8	11.6
50-64	16.5	8.1	8.4	17.4	8.6	8.9	17.7	8.5	9.2	18.1	8.2	9.9
65-74	7.8	3.6	4.2	8.3	3.8	4.5	9.3	4.4	5.0	9.9	4.7	5.3
75+	6.2	2.2	4.0	7.0	2.8	4.2	7.8	3.2	4.5	10.3	4.5	5.8
West Dunbartonshire												
All Ages	92.0	43.6	48.4	89.9	43.0	46.8	88.4	42.7	45.7	84.0	41.2	42.7
0-15	17.3	8.9	8.4	15.7	8.0	7.7	15.0	7.6	7.4	13.6	6.9	6.7
16-29	16.3	8.1	8.2	16.8	8.7	8.1	15.6	8.3	7.2	12.3	6.6	5.7
30-49	27.2	12.9	14.3	24.3	11.6	12.8	23.1	11.1	11.9	21.1	11.0	10.1
50-64	16.5	8.0	8.5	18.3	8.8	9.5	18.9	9.0	9.9	18.1	8.5	9.6
65-74	8.1	3.5	4.6	8.1	3.7	4.5	9.0	4.2	4.8	10.4	4.8	5.6
75+	6.6	2.2	4.4	6.6	2.3	4.3	6.8	2.4	4.4	8.4	3.4	5.1
West Lothian												
All Ages	162.8	78.8	84.0	173.0	83.2	89.8	179.7	85.9	93.8	196.6	92.4	104.2
0-15	34.5	17.5	17.0	34.0	17.1	16.9	34.0	17.0	16.9	36.4	18.3	18.1
16-29	26.6	13.3	13.3	30.1	14.9	15.2	31.6	15.6	16.0	31.1	15.0	16.2
30-49	52.8	25.5	27.4	52.9	25.2	27.7	52.1	24.4	27.7	52.4	24.0	28.4
50-64	29.1	14.2	15.0	32.5	15.7	16.8	34.8	16.6	18.2	41.4	19.3	22.1
65-74	11.9	5.6	6.4	14.1	6.7	7.5	16.2	7.6	8.6	18.6	8.6	10.0
75+	7.9	2.9	5.0	9.4	3.7	5.7	11.1	4.6	6.5	16.7	7.2	9.5
NHS board areas												
Argyll & Clyde												
All Ages	415.7	199.8	215.8	409.4	198.0	211.4	404.3	196.5	207.8	389.6	191.1	198.5
0-15	77.0	39.2	37.8	69.6	35.3	34.2	65.8	33.3	32.6	61.4	31.3	30.2
16-29	66.2	34.2	32.1	70.6	37.1	33.5	69.3	36.9	32.5	57.1	30.5	26.6
30-49	122.9	59.3	63.6	110.2	53.1	57.2	101.1	49.2	51.9	91.7	47.3	44.4
50-64	80.0	38.8	41.2	85.2	41.2	44.0	87.7	42.2	45.5	85.6	40.3	45.2
65-74	39.4	17.6	21.8	41.0	19.0	22.1	44.7	20.9	23.8	48.2	22.6	25.6
75+	30.2	10.8	19.4	32.8	12.4	20.4	35.6	14.0	21.7	45.6	19.1	26.5
Ayrshire & Arran												
All Ages	367.6	175.4	192.2	365.8	175.0	190.8	363.2	173.8	189.4	354.6	169.3	185.3
0-15	68.3	34.9	33.5	62.0	31.6	30.4	59.2	30.1	29.1	56.0	28.4	27.5
16-29	56.3	28.1	28.2	60.3	30.7	29.6	59.5	30.7	28.8	49.4	25.7	23.7
30-49	105.2	50.2	55.0	95.8	45.3	50.5	88.5	41.7	46.8	79.4	38.1	41.3
50-64	73.0	35.3	37.7	76.6	36.7	39.9	77.5	36.7	40.8	77.7	36.0	41.6
65-74	36.1	16.5	19.5	38.9	18.1	20.8	43.2	20.2	23.1	45.3	21.1	24.2
75+	28.7	10.4	18.3	32.2	12.5	19.7	35.3	14.4	20.9	46.8	20.0	26.8

© Crown copyright 2007

Table 2 continued

Age group	(thousands)											
	2004			2010			2014			2024		
	Persons	Males	Females	Persons	Males	Females	Persons	Males	Females	Persons	Males	Females
Borders - see Scottish Borders council area												
Dumfries & Galloway - see Dumfries & Galloway council area												
Fife												
All Ages	354.5	170.6	183.9	364.9	174.4	190.4	371.0	175.9	195.1	386.8	179.2	207.5
0-15	66.5	33.9	32.6	63.5	32.1	31.4	63.2	31.8	31.4	66.5	33.2	33.3
16-29	59.3	29.7	29.6	65.5	32.6	32.9	65.7	32.3	33.5	60.1	28.7	31.4
30-49	102.8	49.9	52.8	98.6	46.9	51.7	95.6	44.7	50.9	95.0	42.8	52.2
50-64	67.3	32.7	34.5	72.4	35.0	37.4	73.8	35.3	38.5	77.9	36.1	41.8
65-74	31.7	14.5	17.2	35.1	16.3	18.7	40.2	18.8	21.5	43.0	19.8	23.2
75+	26.9	9.7	17.2	29.7	11.5	18.2	32.4	13.0	19.4	44.2	18.7	25.6
Forth Valley												
All Ages	281.8	135.7	146.1	287.7	138.1	149.6	290.4	138.7	151.7	296.4	139.4	157.0
0-15	54.3	27.7	26.6	52.0	26.4	25.6	50.8	25.7	25.1	50.3	25.3	25.0
16-29	46.2	23.1	23.1	49.3	24.7	24.5	49.9	24.9	25.0	46.9	22.9	24.0
30-49	83.8	40.5	43.3	81.3	38.5	42.9	77.5	36.2	41.2	72.0	33.1	38.9
50-64	53.2	25.9	27.2	56.4	27.4	29.0	58.0	27.8	30.2	62.9	29.4	33.5
65-74	25.0	11.5	13.5	27.1	12.5	14.6	30.2	14.2	16.0	32.1	14.9	17.3
75+	19.4	7.0	12.4	21.6	8.5	13.1	24.1	9.9	14.2	32.2	13.9	18.4
Grampian												
All Ages	524.0	259.3	264.7	521.6	260.0	261.6	516.2	259.0	257.2	496.8	252.4	244.3
0-15	96.0	49.4	46.6	87.5	45.2	42.2	82.2	42.4	39.7	72.0	37.2	34.8
16-29	89.0	46.4	42.6	89.9	47.3	42.6	87.9	46.8	41.0	75.5	41.4	34.1
30-49	158.5	79.2	79.3	144.4	72.8	71.6	132.6	67.8	64.8	111.2	60.1	51.1
50-64	98.4	49.4	49.0	109.1	54.6	54.5	111.2	55.3	55.9	110.6	54.1	56.4
65-74	44.8	21.0	23.9	48.1	23.1	25.1	55.8	27.1	28.7	64.5	31.4	33.0
75+	37.3	13.9	23.4	42.5	17.0	25.5	46.5	19.5	27.0	63.0	28.2	34.9
Greater Glasgow												
All Ages	867.1	412.6	454.5	857.8	412.5	445.3	850.8	413.1	437.6	831.2	412.2	419.0
0-15	156.1	80.1	76.1	143.4	73.7	69.7	138.7	71.5	67.2	131.2	67.9	63.3
16-29	177.2	88.1	89.1	183.1	92.3	90.8	174.5	89.0	85.5	148.5	76.6	71.9
30-49	259.2	124.1	135.1	246.5	119.5	127.0	239.3	118.8	120.6	233.4	123.3	110.0
50-64	139.4	67.7	71.7	153.9	74.6	79.3	163.0	77.9	85.1	164.5	77.7	86.8
65-74	73.9	31.9	42.0	68.8	30.7	38.2	71.5	32.7	38.7	82.6	38.3	44.3
75+	61.3	20.7	40.6	62.1	21.8	40.3	63.8	23.3	40.5	71.1	28.4	42.8
Highland - see Highland council area												
Lanarkshire												
All Ages	556.1	267.0	289.1	563.5	271.1	292.4	565.7	272.3	293.4	568.0	273.2	294.8
0-15	108.8	55.6	53.1	103.8	52.9	50.9	101.2	51.5	49.6	97.6	49.8	47.7
16-29	95.5	48.1	47.3	100.4	51.3	49.1	98.8	50.7	48.1	90.2	46.1	44.1
30-49	168.5	80.7	87.8	158.9	76.0	82.9	151.2	72.5	78.7	139.7	68.3	71.4
50-64	100.4	48.4	52.0	109.3	52.3	57.0	114.6	54.5	60.1	120.4	56.5	63.9
65-74	48.2	21.6	26.6	51.3	23.4	27.9	55.5	25.6	29.9	62.4	28.8	33.7
75+	34.7	12.5	22.2	39.8	15.2	24.7	44.4	17.5	26.9	57.8	23.9	33.9
Lothian												
All Ages	787.5	378.4	409.1	815.0	390.1	424.9	831.3	395.6	435.7	874.8	409.8	464.9
0-15	139.6	71.4	68.2	133.8	68.1	65.7	133.1	67.5	65.6	142.2	71.9	70.3
16-29	156.4	76.8	79.5	170.2	82.3	87.9	169.7	81.7	88.0	157.3	74.6	82.7
30-49	240.7	117.1	123.6	240.4	115.9	124.5	239.6	113.9	125.7	245.4	112.5	132.9
50-64	133.5	64.9	68.6	147.3	71.3	76.0	153.6	73.7	79.9	168.5	79.1	89.4
65-74	62.9	28.5	34.5	64.7	29.9	34.8	72.7	33.8	38.9	82.3	38.3	44.0
75+	54.3	19.6	34.7	58.7	22.5	36.2	62.6	25.0	37.6	79.2	33.4	45.7
Orkney - see Orkney Islands council area												
Shetland - see Shetland Islands council area												
Tayside												
All Ages	387.9	186.3	201.6	386.0	186.2	199.8	382.3	184.9	197.3	370.4	179.9	190.5
0-15	69.5	35.7	33.8	65.1	33.4	31.7	62.4	32.0	30.3	57.3	29.5	27.9
16-29	63.3	32.2	31.1	65.4	33.7	31.7	63.9	33.1	30.8	55.9	29.5	26.4
30-49	107.5	51.4	56.2	98.2	46.7	51.5	90.3	43.2	47.1	79.4	39.3	40.0
50-64	75.3	36.8	38.5	80.0	38.7	41.3	81.0	38.7	42.3	79.3	36.8	42.5
65-74	38.6	17.8	20.9	40.4	19.1	21.3	45.1	21.5	23.5	47.7	22.4	25.2
75+	33.6	12.4	21.2	36.9	14.6	22.3	39.7	16.4	23.3	50.8	22.4	28.4
Western Isles - see Eilean Siar council area												

© Crown copyright 2007

Table 3 Projected percentage change in population (2004-based), by broad age group, council and NHS board areas, selected years

Area	All ages			0-15			16-59/64				60/65+				75+			Area
	2010	2014	2024	2010	2014	2024	2010	2014	2024	2024 ¹	2010	2014	2024	2024 ¹	2010	2014	2024	
SCOTLAND	1	1	1	-7	-10	-12	1	-1	-7	-1	9	17	39	19	10	19	53	SCOTLAND
Council areas																		Council areas
Aberdeen City	-5	-8	-18	-12	-18	-35	-6	-11	-27	-22	4	9	27	10	8	13	34	Aberdeen City
Aberdeenshire	3	4	5	-6	-11	-20	1	-1	-9	-2	21	39	81	57	19	35	102	Aberdeenshire
Angus	0	-1	-5	-5	-11	-25	-3	-7	-19	-12	14	25	49	29	14	26	72	Angus
Argyll & Bute	1	2	4	-13	-18	-14	2	2	-3	3	12	20	37	20	11	23	63	Argyll & Bute
Clackmannanshire	1	1	-1	-5	-8	-14	-1	-4	-13	-7	16	29	51	32	15	31	87	Clackmannanshire
Dumfries & Galloway	0	0	-2	-11	-17	-21	-2	-5	-17	-9	14	25	48	29	16	29	75	Dumfries & Galloway
Dundee City	-4	-7	-14	-10	-14	-20	-4	-8	-21	-15	1	3	11	-5	3	6	18	Dundee City
East Ayrshire	0	-1	-3	-9	-12	-16	-1	-3	-11	-5	9	17	36	17	11	21	59	East Ayrshire
East Dunbartonshire	-3	-4	-11	-15	-22	-31	-3	-7	-20	-14	11	19	39	20	21	35	71	East Dunbartonshire
East Lothian	3	6	13	-6	-9	-1	4	6	5	13	11	20	48	26	12	21	56	East Lothian
East Renfrewshire	1	2	3	-9	-13	-16	1	1	-5	2	11	20	48	27	17	29	65	East Renfrewshire
Edinburgh, City of	3	5	10	-4	-4	3	5	6	7	12	3	8	26	8	4	7	25	Edinburgh, City of
Eilean Siar	-2	-5	-15	-6	-11	-31	-4	-11	-27	-20	6	14	29	13	4	9	38	Eilean Siar
Falkirk	3	4	7	-3	-5	-7	3	3	1	8	10	19	41	20	10	21	59	Falkirk
Fife	3	5	9	-4	-5	0	2	2	0	6	13	23	47	27	10	20	64	Fife
Glasgow City	-1	-2	-4	-7	-9	-13	2	1	-5	0	-7	-7	6	-13	-5	-6	-5	Glasgow City
Highland	2	3	4	-6	-10	-14	1	-1	-10	-2	15	28	59	37	16	29	80	Highland
Inverclyde	-4	-7	-14	-11	-17	-29	-4	-9	-23	-16	4	10	28	8	2	8	34	Inverclyde
Midlothian	-1	-1	-2	-7	-10	-10	-2	-4	-12	-6	11	19	40	19	12	23	62	Midlothian
Moray	0	0	-1	-11	-18	-21	0	-2	-9	-3	12	22	44	25	16	28	69	Moray
North Ayrshire	-1	-2	-5	-11	-17	-24	-2	-5	-16	-10	13	23	47	27	13	26	73	North Ayrshire
North Lanarkshire	1	1	0	-4	-6	-11	0	-2	-7	-1	9	18	41	20	12	25	63	North Lanarkshire
Orkney Islands	2	1	-2	-11	-20	-34	1	-2	-14	-6	16	29	60	39	13	27	84	Orkney Islands
Perth & Kinross	3	4	6	-4	-6	-9	1	-1	-6	1	13	24	50	31	14	25	67	Perth & Kinross
Renfrewshire	-2	-4	-9	-7	-12	-20	-3	-6	-17	-11	7	13	32	12	10	20	50	Renfrewshire
Scottish Borders	4	7	15	-2	-2	7	3	3	2	10	14	26	57	35	12	24	72	Scottish Borders
Shetland Islands	-1	-3	-11	-11	-20	-40	-3	-8	-23	-17	18	33	63	42	11	24	85	Shetland Islands
South Ayrshire	0	-1	-2	-8	-11	-13	-2	-5	-14	-7	10	17	35	18	11	21	56	South Ayrshire
South Lanarkshire	2	3	4	-5	-7	-10	2	1	-4	3	11	19	45	23	16	28	64	South Lanarkshire
Stirling	1	2	6	-6	-8	-5	1	0	-3	3	11	21	43	23	13	25	66	Stirling
West Dunbartonshire	-2	-4	-9	-9	-13	-21	-2	-5	-16	-10	3	9	30	10	0	3	28	West Dunbartonshire
West Lothian	6	10	21	-2	-1	6	6	9	13	20	19	35	75	47	20	41	112	West Lothian
NHS board areas																		NHS board areas
Argyll & Clyde	-2	-3	-6	-10	-15	-20	-2	-5	-15	-9	8	15	34	15	8	18	51	Argyll & Clyde
Ayrshire & Arran	0	-1	-4	-9	-13	-18	-2	-4	-14	-7	11	19	40	21	12	23	63	Ayrshire & Arran
Borders	4	7	15	-2	-2	7	3	3	2	10	14	26	57	35	12	24	72	Borders
Dumfries & Galloway	0	0	-2	-11	-17	-21	-2	-5	-17	-9	14	25	48	29	16	29	75	Dumfries & Galloway
Fife	3	5	9	-4	-5	0	2	2	0	6	13	23	47	27	10	20	64	Fife
Forth Valley	2	3	5	-4	-6	-7	1	1	-2	4	11	21	44	23	11	24	66	Forth Valley
Grampian	0	-1	-5	-9	-14	-25	-2	-5	-16	-10	13	24	53	33	14	25	69	Grampian
Greater Glasgow	-1	-2	-4	-8	-11	-16	1	0	-7	-1	-2	1	17	-2	1	4	16	Greater Glasgow
Highland	2	3	4	-6	-10	-14	1	-1	-10	-2	15	28	59	37	16	29	80	Highland
Lanarkshire	1	2	2	-5	-7	-10	1	0	-6	0	10	19	44	22	15	28	66	Lanarkshire
Lothian	3	6	11	-4	-5	2	4	6	6	12	8	16	39	18	8	15	46	Lothian
Orkney	2	1	-2	-11	-20	-34	1	-2	-14	-6	16	29	60	39	13	27	84	Orkney
Shetland	-1	-3	-11	-11	-20	-40	-3	-8	-23	-17	18	33	63	42	11	24	85	Shetland
Tayside	0	-1	-5	-6	-10	-18	-2	-5	-15	-9	9	17	36	18	10	18	51	Tayside
Western Isles	-2	-5	-15	-6	-11	-31	-4	-11	-27	-20	6	14	29	13	4	9	38	Western Isles

¹ Includes the change in women's state pension age from 60 to 65 between 2010 and 2020.

Table 5 Comparison between 2002 and 2004-based population projections, by council and NHS board areas, 2004-2018

(persons)

Area	2004		2010		2014		2018		Area
	2002 based	2004 based	2002 based	2004 based	2002 based	2004 based	2002 based	2004 based	
SCOTLAND	5,037,824	5,078,400	4,991,536	5,118,250	4,963,004	5,123,769	4,935,272	5,127,798	SCOTLAND
Council areas									Council areas
Aberdeen City	205,945	205,710	196,938	195,675	190,772	188,523	184,427	180,851	Aberdeen City
Aberdeenshire	227,418	231,570	227,182	238,879	226,228	240,819	224,878	242,051	Aberdeenshire
Angus	107,052	108,350	103,730	108,687	101,131	107,388	98,228	105,690	Angus
Argyll & Bute	90,584	91,190	89,875	92,547	89,587	93,075	89,465	93,778	Argyll & Bute
Clackmannanshire	47,615	48,240	46,792	48,858	46,014	48,632	45,125	48,294	Clackmannanshire
Dumfries & Galloway	146,199	147,930	142,569	148,536	139,751	147,786	136,656	146,842	Dumfries & Galloway
Dundee City	141,169	142,170	133,325	135,938	128,370	132,056	123,506	128,325	Dundee City
East Ayrshire	118,607	119,720	115,190	119,213	112,820	118,527	110,363	117,759	East Ayrshire
East Dunbartonshire	106,449	106,550	104,055	103,880	102,549	101,782	101,082	99,445	East Dunbartonshire
East Lothian	91,915	91,580	95,742	94,628	98,410	96,739	101,304	99,146	East Lothian
East Renfrewshire	90,228	89,610	92,054	90,594	93,381	91,259	94,851	91,838	East Renfrewshire
Edinburgh, City of	449,149	453,670	454,101	468,463	458,502	476,256	463,238	484,826	Edinburgh, City of
Eilean Siar	25,631	26,260	24,065	25,718	22,930	24,915	21,725	24,006	Eilean Siar
Falkirk	146,137	147,460	148,082	151,793	149,351	153,745	150,588	155,566	Falkirk
Fife	351,390	354,600	353,238	364,944	354,347	371,060	355,349	377,528	Fife
Glasgow City	572,380	577,670	556,793	570,096	550,716	564,881	546,857	560,405	Glasgow City
Highland	207,541	211,340	204,954	216,580	202,615	217,762	199,887	218,598	Highland
Inverclyde	82,320	82,430	78,759	79,126	76,458	76,996	74,177	74,841	Inverclyde
Midlothian	80,931	79,610	82,935	79,118	84,313	78,806	85,782	78,517	Midlothian
Moray	85,948	86,740	83,503	87,064	81,702	86,828	79,969	86,574	Moray
North Ayrshire	134,575	136,020	131,311	135,009	128,889	133,754	126,252	132,266	North Ayrshire
North Lanarkshire	320,603	322,790	318,200	324,808	316,387	325,176	314,364	325,207	North Lanarkshire
Orkney Islands	18,972	19,500	18,299	19,812	17,780	19,712	17,196	19,529	Orkney Islands
Perth & Kinross	135,579	137,430	136,721	141,454	137,312	142,855	137,888	144,135	Perth & Kinross
Renfrewshire	170,242	170,610	165,079	167,243	161,500	164,388	157,865	161,300	Renfrewshire
Scottish Borders	107,794	109,270	108,775	114,187	109,172	117,287	109,442	120,591	Scottish Borders
Shetland Islands	21,864	21,940	22,026	21,696	22,127	21,208	22,214	20,613	Shetland Islands
South Ayrshire	110,779	111,850	108,235	111,573	106,536	110,928	104,852	110,305	South Ayrshire
South Lanarkshire	301,366	305,410	298,634	311,895	296,643	314,170	294,509	316,147	South Lanarkshire
Stirling	86,923	86,370	89,748	87,394	91,793	88,345	94,010	89,438	Stirling
West Dunbartonshire	91,674	91,970	88,837	89,855	87,191	88,421	85,577	86,853	West Dunbartonshire
West Lothian	162,845	162,840	171,789	172,987	177,727	179,690	183,646	186,534	West Lothian
NHS board areas									NHS board areas
Argyll & Clyde	414,498	415,658	403,844	409,422	396,883	404,319	390,007	399,022	Argyll & Clyde
Ayrshire & Arran	363,961	367,590	354,736	365,795	348,245	363,209	341,467	360,330	Ayrshire & Arran
Borders	107,794	109,270	108,775	114,187	109,172	117,287	109,442	120,591	Borders
Dumfries & Galloway	146,199	147,930	142,569	148,536	139,751	147,786	136,656	146,842	Dumfries & Galloway
Fife	351,390	354,519	353,238	364,863	354,347	370,979	355,349	377,447	Fife
Forth Valley	280,675	281,764	284,622	287,739	287,158	290,416	289,723	292,992	Forth Valley
Grampian	519,311	524,020	507,623	521,618	498,702	516,170	489,274	509,476	Grampian
Greater Glasgow	859,926	867,083	841,436	857,779	833,956	850,757	828,976	843,980	Greater Glasgow
Highland	207,541	211,340	204,954	216,580	202,615	217,762	199,887	218,598	Highland
Lanarkshire	551,422	556,114	547,006	563,468	543,573	565,697	539,764	567,437	Lanarkshire
Lothian	784,840	787,504	804,567	815,000	818,952	831,295	833,970	848,827	Lothian
Orkney	18,972	19,500	18,299	19,812	17,780	19,712	17,196	19,529	Orkney
Shetland	21,864	21,940	22,026	21,696	22,127	21,208	22,214	20,613	Shetland
Tayside	383,800	387,908	373,776	386,037	366,813	382,257	359,622	378,108	Tayside
Western Isles	25,631	26,260	24,065	25,718	22,930	24,915	21,725	24,006	Western Isles

© Crown copyright 2007

Annex A

Assumed fertility rates by age; mid-year to mid-year periods; Scotland

(rates per 1,000 females)

Age	2004-05	2005-06	2006-07	2007-08	2008-09	2009-10	2010-11	2011-12	2012-13	2013-14	2014-15	2015-16	2016-17	2017-18	2018-19	2019-20	2020-21	2021-22	2022-23	2023-24
15	3	4	4	4	4	4	4	4	4	4	3	3	3	3	3	3	3	3	3	3
16	11	11	11	11	11	11	11	10	10	10	10	10	10	10	10	10	10	10	10	10
17	27	27	27	27	26	26	26	26	26	25	25	25	25	25	25	25	25	25	25	25
18	39	38	38	37	37	37	37	36	36	36	36	35	35	35	35	35	35	35	35	35
19	48	48	47	47	47	46	46	46	46	45	45	45	45	45	44	45	45	45	45	45
20	55	55	54	54	54	53	53	53	53	53	52	52	52	52	52	52	52	52	52	52
21	59	59	58	58	58	58	58	57	57	57	57	57	57	57	57	57	57	57	57	57
22	62	61	61	60	60	60	60	60	60	60	60	59	59	59	59	60	60	60	60	60
23	65	63	62	62	62	62	62	62	62	62	61	61	61	62	62	62	62	62	62	62
24	67	66	65	65	65	65	65	65	65	64	64	64	64	65	65	65	65	65	65	65
25	75	71	70	69	70	70	70	70	70	69	69	69	69	69	70	70	70	70	70	70
26	82	78	77	76	76	77	77	77	77	77	76	76	76	76	77	77	77	77	77	77
27	89	87	86	85	85	85	85	85	85	85	85	85	84	85	85	85	85	85	85	85
28	96	95	94	94	93	92	93	93	93	93	93	93	93	93	93	93	93	93	93	93
29	100	101	99	99	100	99	98	99	99	99	99	99	99	99	99	99	99	99	99	99
30	103	104	103	102	102	103	102	101	102	102	102	102	102	102	102	102	102	103	103	103
31	101	102	101	101	101	101	102	101	101	101	101	102	102	102	102	102	102	102	102	102
32	96	97	96	96	96	96	96	97	97	96	96	97	97	98	98	98	98	98	98	98
33	88	88	88	88	88	88	88	88	89	89	89	89	90	90	90	90	90	90	90	90
34	77	78	78	78	78	78	78	78	78	79	79	79	79	80	80	80	80	80	80	80
35	67	66	66	66	67	67	67	67	67	67	68	68	68	69	69	69	69	69	69	69
36	54	55	55	55	55	55	56	56	56	56	56	57	57	57	57	58	58	58	58	58
37	44	44	44	44	44	45	45	45	45	46	46	46	47	47	46	46	47	47	47	47
38	33	34	34	34	35	35	35	35	36	36	36	36	36	37	37	37	37	37	37	37
39	25	26	26	26	26	27	27	27	27	27	28	28	28	28	28	28	28	28	28	28
40	18	19	19	19	20	20	20	20	20	21	21	21	21	21	21	21	21	21	21	21
41	11	11	11	11	11	12	12	12	12	12	12	12	12	12	12	12	13	13	12	12
42	7	7	7	7	7	7	7	8	8	8	8	8	8	8	8	8	8	8	8	8
43	4	4	4	4	4	4	4	4	5	5	5	5	5	5	5	5	5	5	5	5
44	2	2	2	2	2	2	2	2	2	2	2	2	2	2	2	2	2	2	2	3
45	1	1	1	1	1	1	1	1	1	1	1	1	1	1	1	1	1	1	1	1
46	1	1	1	1	1	1	1	1	1	1	1	1	1	1	1	1	1	1	1	1
Total fertility rate (TFR)	1.61	1.60	1.59	1.58	1.58	1.59	1.59	1.59	1.59	1.59	1.59	1.59	1.59	1.59	1.60	1.60	1.60	1.60	1.60	1.60

Annex B

Assumed mortality rates by sex, for selected ages and years; Scotland (rates per 100,000)

Age	Mid-year to mid-year				Percentage improvement ¹ 2004-05 to 2023 - 24
	2004-05	2009-10	2013-14	2023-24	
MALES					
0	100	94	90	81	20
2	22	18	16	13	42
7	11	9	8	6	42
12	20	15	13	10	48
17	84	66	57	46	46
22	114	99	91	78	32
27	143	125	114	98	32
32	166	159	153	140	16
37	197	195	193	180	8
42	269	256	247	224	17
47	426	413	400	366	14
52	609	601	586	536	12
57	1,048	920	905	834	20
62	1,694	1,538	1,412	1,300	23
67	2,402	2,066	1,949	1,710	29
72	4,001	3,198	2,897	2,542	36
77	6,562	5,446	4,763	4,069	38
82	9,935	8,607	7,732	6,362	36
87	15,871	13,931	12,790	10,708	33
90 & over	23,149	22,234	20,373	18,235	21
FEMALES					
0	85	81	78	71	16
2	18	15	14	12	35
7	9	9	9	9	1
12	12	10	8	6	51
17	40	35	32	26	33
22	39	35	32	26	33
27	44	40	37	32	27
32	61	59	58	53	13
37	92	84	79	68	26
42	154	141	132	114	26
47	257	247	239	219	15
52	387	369	358	328	15
57	639	581	559	514	20
62	987	918	856	778	21
67	1,487	1,317	1,250	1,096	26
72	2,589	2,104	1,916	1,679	35
77	4,413	3,804	3,285	2,769	37
82	7,298	6,627	6,014	4,703	36
87	12,698	11,756	10,994	8,841	30
90 & over	21,376	21,455	20,039	17,758	17

¹ Percentage improvement in mortality has been calculated using actual, not rounded, mortality rates

© Crown copyright 2007

Annex C

Fertility and mortality local scaling factors by council and NHS board area

Area	Local Scaling Factors		
	Fertility	Mortality	
		Males	Females
SCOTLAND	1.000	1.000	1.000
Council areas			
Aberdeen City	0.871	0.954	0.961
Aberdeenshire	1.118	0.790	0.839
Angus	1.138	0.874	1.004
Argyll & Bute	1.100	0.913	0.945
Clackmannanshire	1.069	1.019	1.018
Dumfries & Galloway	1.099	0.862	0.914
Dundee City	0.949	1.078	1.016
East Ayrshire	1.044	1.043	1.130
East Dunbartonshire	1.056	0.779	0.852
East Lothian	1.167	0.858	0.952
East Renfrewshire	1.193	0.826	0.838
Edinburgh, City of	0.754	0.927	0.922
Eilean Siar	1.122	1.194	0.918
Falkirk	1.003	1.017	1.054
Fife	1.018	0.929	0.939
Glasgow City	0.884	1.385	1.186
Highland	1.150	0.942	0.936
Inverclyde	1.054	1.275	1.084
Midlothian	1.177	0.966	1.003
Moray	1.166	0.916	0.936
North Ayrshire	1.057	1.035	1.026
North Lanarkshire	1.077	1.131	1.113
Orkney Islands	1.009	0.869	0.841
Perth & Kinross	1.122	0.814	0.871
Renfrewshire	1.068	1.125	1.097
Scottish Borders	1.139	0.866	0.960
Shetland Islands	1.197	0.882	0.833
South Ayrshire	1.034	0.928	0.972
South Lanarkshire	1.022	0.992	1.038
Stirling	0.988	0.903	0.964
West Dunbartonshire	1.025	1.181	1.106
West Lothian	1.105	1.018	1.088
NHS board areas			
Argyll & Clyde	1.065	1.104	1.057
Ayrshire & Arran	1.046	1.001	1.038
Borders	1.139	0.866	0.960
Dumfries & Galloway	1.099	0.862	0.914
Fife	1.018	0.929	0.939
Forth Valley	1.009	0.982	1.019
Grampian	1.012	0.874	0.905
Greater Glasgow	0.937	1.207	1.096
Highland	1.150	0.942	0.936
Lanarkshire	1.054	1.054	1.073
Lothian	0.891	0.938	0.960
Orkney	1.009	0.869	0.841
Shetland	1.197	0.882	0.833
Tayside	1.052	0.921	0.960
Western Isles	1.122	1.194	0.918

© Crown copyright 2007

Annex D

Migration assumptions by council and NHS board area (persons per annum)

Area	Migration assumptions			
	2004 -2005	2005 -2006	2006 -2007	2007/2008 -2023/2024
SCOTLAND	21,000	13,500	8,500	4,000
Council areas				
Aberdeen City	-1,650	-1,650	-1,650	-1,550
Aberdeenshire	2,150	1,400	900	600
Angus	900	550	350	100
Argyll & Bute	900	650	500	400
Clackmannanshire	400	200	100	0
Dumfries & Galloway	1050	700	600	400
Dundee City	-800	-800	-800	-800
East Ayrshire	300	150	100	50
East Dunbartonshire	-400	-400	-400	-400
East Lothian	550	550	550	550
East Renfrewshire	0	50	100	150
Edinburgh, City of	4150	2950	2050	1100
Eilean Siar	250	100	50	-50
Falkirk	1,300	900	650	500
Fife	2,500	2,100	1,750	1,500
Glasgow City	500	-350	-1,100	-1,900
Highland	2,100	1,600	1,050	700
Inverclyde	-350	-350	-300	-300
Midlothian	-200	-200	-150	-150
Moray	350	150	150	100
North Ayrshire	200	100	50	0
North Lanarkshire	250	50	-100	-200
Orkney Islands	200	150	100	50
Perth & Kinross	1500	1100	900	700
Renfrewshire	-250	-350	-400	-500
Scottish Borders	1,250	1,100	1,050	1,000
Shetland Islands	0	-50	-50	-100
South Ayrshire	650	500	300	250
South Lanarkshire	2,100	1,550	1,100	750
Stirling	100	150	200	250
West Dunbartonshire	-200	-250	-250	-300
West Lothian	1,200	1,150	1,100	1,100
NHS board areas				
Argyll & Clyde	200	-150	-300	-500
Ayrshire & Arran	1,150	750	450	300
Borders	1,250	1,100	1,050	1,000
Dumfries & Galloway	1,050	700	600	400
Fife	2,500	2,100	1,750	1,500
Forth Valley	1,800	1,250	950	750
Grampian	850	-100	-600	-850
Greater Glasgow	400	-550	-1,350	-2,200
Highland	2100	1600	1050	700
Lanarkshire	1,950	1,300	800	400
Lothian	5,700	4,450	3,550	2,600
Orkney	200	150	100	50
Shetland	0	-50	-50	-100
Tayside	1600	850	450	0
Western Isles	250	100	50	-50

© Crown copyright 2007

Annex E

Trends in net migration, mid-2000 to mid-2004 by council and NHS board areas

(net migrants per annum)

	Estimated net civilian migration from mid-year population estimates				
	1999/00	2000/01	2001/02	2002/03	2003/04
SCOTLAND	-3,615	5,190	-3,745	8,879	26,004
Council area					
Aberdeen City	-1,200	-1,366	-2,438	-1,672	-1,678
Aberdeenshire	-695	-326	173	1,290	2,593
Angus	-323	-279	2	88	1,164
Argyll & Bute	-153	553	-32	678	1,039
Clackmannanshire	-45	-96	-152	-195	545
Dumfries & Galloway	-190	671	33	395	1,235
Dundee City	-972	-737	-899	-552	-794
East Ayrshire	-346	415	-249	97	334
East Dunbartonshire	-9	-385	-949	-246	-371
East Lothian	865	325	655	501	508
East Renfrewshire	423	264	150	19	-61
Edinburgh, City of	1,508	792	-719	379	5,138
Eilean Siar	-222	-222	-84	56	315
Falkirk	272	692	427	473	1,521
Fife	1,636	1,712	1,300	1,053	2,799
Glasgow City	-4,676	2,695	-214	1,182	1,258
Highland	86	41	-392	1,281	2,573
Inverclyde	-383	-240	-186	-295	-387
Midlothian	602	-270	-443	-657	-210
Moray	-209	308	-537	142	385
North Ayrshire	-461	-365	52	592	279
North Lanarkshire	-981	-557	-97	262	388
Orkney Islands	-73	-24	24	144	247
Perth & Kinross	13	117	563	1,138	1,721
Renfrewshire	-525	-767	-668	-611	-195
Scottish Borders	700	944	733	1,249	1,306
Shetland Islands	-334	-253	-24	-90	48
South Ayrshire	-146	250	28	447	773
South Lanarkshire	-90	197	14	1,158	2,500
Stirling	785	78	37	247	33
West Dunbartonshire	-334	-453	-281	-293	-193
West Lothian	1,862	1,476	428	619	1,191
NHS Board area					
Argyll & Clyde	-1,402	-283	-985	-595	265
Ayrshire & Arran	-953	300	-169	1,136	1,386
Borders	700	944	733	1,249	1,307
Dumfries & Galloway	-190	671	33	395	1,235
Fife	1,636	1,632	1,300	1,053	2,798
Forth Valley	1,012	374	345	505	2,097
Grampian	-2,104	-1,384	-2,802	-240	1,300
Greater Glasgow	-4,176	2,654	-803	1,867	1,545
Highland	86	41	-392	1,281	2,573
Lanarkshire	-1,150	-474	-478	592	2,192
Lothian	4,837	2,143	-86	852	6,610
Orkney	-73	-24	24	144	247
Shetland	-334	-253	-24	-90	48
Tayside	-1,282	-929	-357	674	2,086
Western Isles	-222	-222	-84	56	315

8. NOTES ON STATISTICAL PUBLICATIONS

ENQUIRIES ABOUT THIS PUBLICATION Enquiries should be addressed to: Statistics Customer Services, General Register Office for Scotland, Ladywell House, Edinburgh, EH12 7TF Telephone: (0131) 314 4299, Fax: (0131) 314 4696, E-mail: customer@gro-scotland.gsi.gov.uk.

NATIONAL STATISTICS This is a National Statistics publication. It has been produced to high professional standards set out in the National Statistics Code of Practice and Release Practice Protocol (www.statistics.gov.uk/about_ns/cop/default.asp). These statistics undergo regular quality assurance reviews to ensure that they meet customer needs. They are produced free from any political interference.

THE GENERAL REGISTER OFFICE FOR SCOTLAND (GROS) GROS is the devolved Government department in Scotland responsible for the registration of births, marriages, civil partnerships, deaths, divorces and adoptions in Scotland. We are responsible for the Census of Population in Scotland which we use, with other sources of information, to produce population and household statistics. We make available important information for family history. Our website is www.gro-scotland.gov.uk/.

OTHER GROS STATISTICS Further detailed statistics produced by GROS are available from the statistics pages of the GROS website (www.gro-scotland.gov.uk/statistics/index.html). Statistics from the 2001 Census are on the Scotland's Census Results On-Line website (www.scrol.gov.uk) and on the Census section of the main website (www.gro-scotland.gov.uk/census/index.html).

Information about future publications is provided on the GROS website (www.gro-scotland.gov.uk/futurepb.html). If you would like to receive notification of forthcoming statistical publications, you can register your interest on The Scottish Government's ScotStat web site at www.scotland.gov.uk/Topics/Statistics/scotstat/Intro.

COMPLAINTS AND SUGGESTIONS If you are not satisfied with our service, please write to Kirsty MacLachlan, Head of Demography Division, Room 1/2/7, Ladywell House, Ladywell Road, Edinburgh, EH12 7TF, Telephone: (0131) 314 4242, E-mail: kirsty.maclachlan@gro-scotland.gsi.gov.uk.

We also welcome any comments or suggestions that would help us to improve our standards of service.

RELATED ORGANISATIONS

ORGANISATION	CONTACT
THE SCOTTISH GOVERNMENT (SG): The SG is responsible for a wide range of devolved functions. The aim of the statistical service in the SG is to provide relevant and reliable statistical information, analysis and advice that meets the needs of government, business and the people of Scotland	Ryan Stewart, Office of the Chief Statistician, The Scottish Government, 3 rd Floor West Rear, St Andrews House, Edinburgh, EH1 3DG Telephone: (0131) 244 0442 Fax: (0131) 244 0335 E-mail: statistics.enquiries@scotland.gsi.gov.uk Website: www.scotland.gov.uk/Topics/Statistics
The OFFICE FOR NATIONAL STATISTICS (ONS) is responsible for producing a wide range of economic and social statistics. It also, for England and Wales, registers life events and holds the Census of Population.	Customer Contact Centre, Room 1.015, Office for National Statistics, Cardiff Road, Newport, NP10 8XG Telephone: 0845 601 3034 Minicom: 01633 812399 Fax: 01633 652747 E-mail: info@statistics.gsi.gov.uk Website: www.statistics.gov.uk
The NORTHERN IRELAND STATISTICS AND RESEARCH AGENCY (NISRA) is Northern Ireland's official statistics organisation. The Agency also has responsibility, in Northern Ireland, for the registration of births, marriages, adoptions and deaths and the Census of Population.	Northern Ireland Statistics and Research Agency, McAuley House, 2-14 Castle Street, Belfast, BT1 1SA Telephone 028 9034 8100 Fax 028 9034 8106 Website: www.nisra.gov.uk

© Crown Copyright. Brief extracts from the Crown Copyright material in General Register Office for Scotland publications may be reproduced provided the source is fully acknowledged.