

General Register Office

S C O T L A N D

information about Scotland's people

**Population Projections Scotland
(2006-based)**

Population projections by sex, age
and administrative area

Published on 22 January 2008

Revised on 9 October 2008

Corrected on 27 January 2011

A National Statistics publication for Scotland

National Statistics are produced to high professional standards set out in the National Statistics Code of Practice. They undergo regular quality assurance reviews to ensure that they meet customer needs. They are produced free from any political interference.

Contents

Main Points	1
1. Background.....	2
2. Results of the projection	2
2.1 Scotland	2
2.2 Council areas	3
2.3 NHS board areas.....	6
2.4 Age structure across Scotland.....	6
3. Comparisons with the 2004-based projections	15
4. High migration variant projection	16
5. Methodology and assumptions.....	19
5.1 Methodology.....	19
5.2 Base population.....	19
5.3 Projections software system and other small method changes	19
5.4 Fertility.....	20
5.5 Mortality.....	21
5.6 Migration.....	21
6. Uses and limitations of projections	23
7. Consequences of projections	23
8. Further information	24
Annex A.....	37
Annex B.....	38
Annex C	39
Annex D	40
Annex E.....	41
Annex F.....	42
9. NOTES ON STATISTICAL PUBLICATIONS.....	43

List of Tables

Table A Components of projected population change for Council areas, 2006-2031 ...	4
Table B Projected percentage change in population (2006-based), by broad age group and council areas, 2006-2031	12
Table 1 Projected population by council and NHS board area (2006-based), 2006-2031.....	25
Table 2 Projected population (2006- based) by sex and broad age group, council and NHS board areas, selected years.....	26
Table 3 Projected percentage change in population (2006-based), by broad age group, council and NHS board areas, selected years	33
Table 4 Projected births (2006-based), by council and NHS board areas, 2006-2031.....	34
Table 5 Comparison between 2004 and 2006-based population projections, by council and NHS board areas, 2006-2031	35
Table 6 Comparison between principal and high migration variant population projections, by Council and NHS board Areas, 2011-2031	36

Detailed Tables - for each administrative area by single year of age and sex are also available on the GROS website.

List of Figures

Figure 1 Estimated population of Scotland (2006-based), actual and projected, 1951-2031.....	3
Figure 2a Projected percentage change in population, (2006-based), by Council area, 2006-2031.....	5
Figure 2b Projected percentage change in population (2006-based), by council area, 2006-2031.....	6
Figure 3a Projected percentage change in population, (2006-based), by NHS board area, 2006-2031 (Map).....	7
Figure 3b Projected percentage change (2006-based), by NHS board area, 2006-2031.....	8
Figure 4a Projected percentage change in population aged 0-15 (2006-based), by council area, 2006-2031.....	8
Figure 4b Projected percentage change in population of working age (2006-based), by council area, 2006-2031.....	9
Figure 4c Projected percentage change in population of pensionable age (2006-based), by council area, 2006-2031.....	10
Figure 5a Projected percentage change in population aged 0-15 (2006-based), by NHS board area, 2006-2031.....	11
Figure 5b Projected percentage change in population of working age (2006-based), by NHS board area, 2006-2031.....	11
Figure 5c Projected percentage change in population aged (2006-based), by NHS board area, 2006-2031.....	11
Figure 6a Age structure of council areas in 2006: children, working age, and pensionable age (%), (ranked by percentage of pensionable age).....	13
Figure 6b Projected age structure of council areas in 2031: children, working age, and pensionable age (%), (ranked by percentage of pensionable age).....	13
Figure 7a Age structure of NHS board areas in 2006: children, working age, and pensionable age (%), (ranked by percentage of pensionable age).....	14
Figure 7b Projected age structure of NHS board areas in 2031 (2006-based): children, working age, and pensionable age (%), (ranked by percentage of pensionable age).....	14
Figure 8 Percentage difference between projected 2024 population using 2004-based projections and using 2006-based projections, by council area.....	15
Figure 9 Percentage change between 2004 and 2006-based population projections in 2024, by NHS board area.....	16

Figure 10a Projected percentage change in population under high migration variant projection (2006-based), by council area, 2006-2031	18
Figure 10b Projected percentage change in population under high migration variant projection (2006-based), by NHS board area, 2006-2031	18
Figure 11 Projected percentage change in births (2006-based), by council area, 2006-2031	20
Figure 12 Migration to and from outwith Scotland and to and from other council areas within Scotland	22

Main Points

The key points in this paper, relating to the period between 2006 and 2031, are:

- although the population of the whole of Scotland is projected to rise over the next 25 years before declining slowly, there are differences in this pattern across Scotland with some areas projected to increase in size and others to decrease;
- The population of 15 of the 32 council areas in Scotland are projected to increase, while the population in the other 17 are projected to decrease. The council areas with the greatest projected increase in population (+22 per cent) are Perth & Kinross and West Lothian. Inverclyde and East Dunbartonshire have the largest projected decreases (-15 per cent);
- Scotland's population is projected to age and this is true for all administrative areas to a greater or lesser extent.
- The number of **children aged 0-15** is projected to decrease in 24 of the 32 council areas, with the largest percentage decreases in Shetland (-31 per cent) and East Dunbartonshire (-29 per cent). The biggest increases are projected in East Lothian (+15 per cent) and Perth & Kinross (+14 per cent);
- The population of **working age**¹ is projected to increase in 14 council areas and decrease in 18, increasing the most in Edinburgh (+18 per cent) and decreasing the most in East Dunbartonshire (-25 per cent);
- The population of **pensionable age**² is projected to increase in all council areas, the largest increases being projected in Aberdeenshire (+76 per cent) and West Lothian (+58 per cent);
- The high migration variant projection shows the projected population if Scotland were to gain larger numbers through migration than expected. The populations in 23 councils are expected to rise under this variant. The greatest increase is again projected in Perth & Kinross (+27 per cent) and the largest decrease again in Inverclyde (-13 per cent) and East Dunbartonshire (-12 per cent).

¹ Working age is 16-59 for women and 16-64 for men until 2010; between 2010 and 2020 working age becomes 16-64 for women. Between 2024 and 2026 working age for both men and women becomes 16-65 and changes again, in two further steps, to 16-67 by 2046.

² Pensionable age is 65 for men, 60 for women until 2010; between 2010 and 2020 pensionable age for women increases to 65. Between 2024 and 2026 the pensionable age for both men and women increases to 66 and changes again, in two further steps, to 68 by 2046.

1. Background

1.1 This paper summarises the Registrar General for Scotland's mid-2006 based population projections for the council and NHS board areas of Scotland. The projections are consistent with the mid-2006 based national population projections, prepared by the Office for National Statistics (ONS) on behalf of the Registrars General for the constituent countries of the UK.

1.2 As well as producing the main "principal" projection ONS also produce "variant" projections using alternative plausible assumptions. This paper concentrates on the "principal" projection but also includes a section on the high migration variant which assumes larger net flows of migrants into Scotland. This variant was chosen as the migration assumption has a large effect on the projected population and future migration levels are particularly difficult to predict. This is the first time that a variant projection has been made available for the council and NHS board areas of Scotland.

1.3 The projections in this paper are based on revised 2006 population estimates published on 27 July 2007.

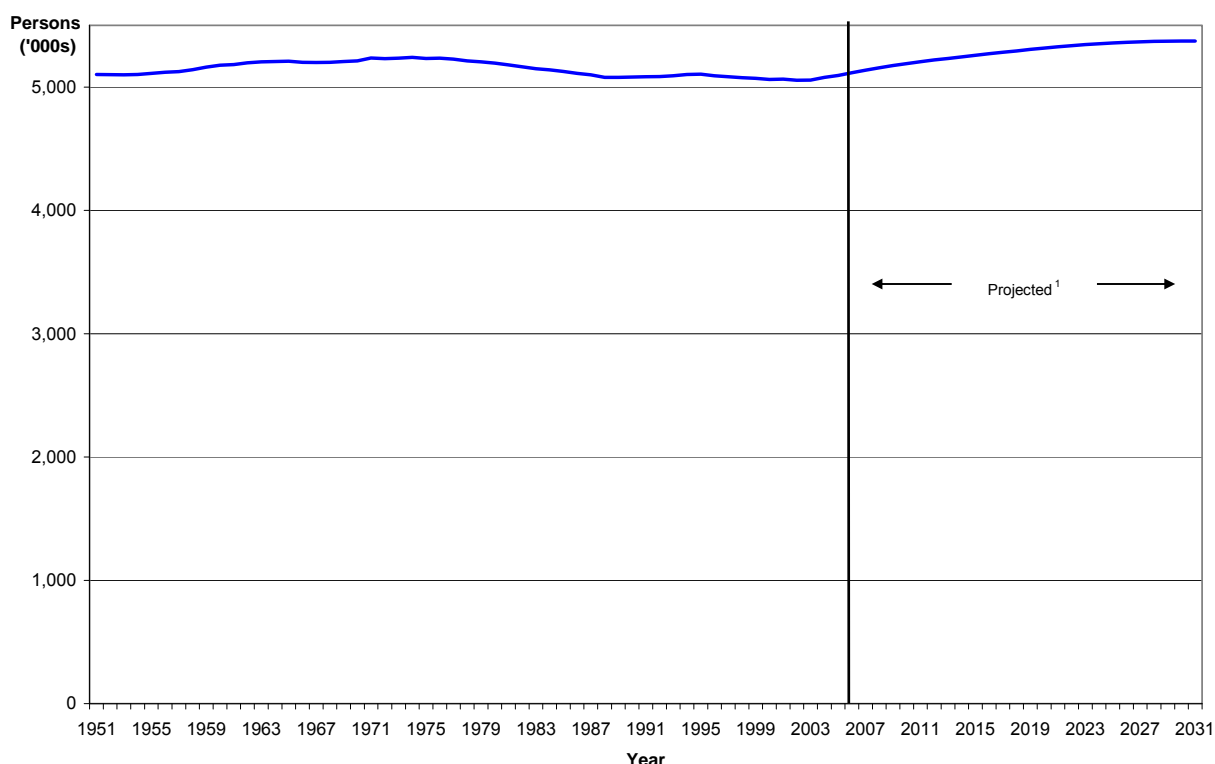
1.4 This round of sub-national projections has been prepared up to 2031 (25 years ahead), rather than for 20 years as in the 2004-based projections. This is to aid councils in the production of structure plans. Other small changes have been made to the software and method used to produce the projections and these are explained in **Section 5**. It should be remembered when looking at these results that they are mainly trend based and do not take account of policy initiatives. It is also important to note that projections become more uncertain the further ahead they go, especially for smaller areas, as these populations are affected more by the migration assumptions. The uses and the limitations of these projections are described in more detail in **Section 6**.

2. Results of the projection

2.1 Scotland

2.1.1 The results of the 2006-based projections show the total population of Scotland rising from 5.12 million in 2006 to 5.37 million in 2031 before slowly declining. **Figure 1** shows the results for Scotland for 25 years ahead, up to 2031.

Figure 1 Estimated population of Scotland (2006-based), actual and projected, 1951- 2031



¹ 2006-based projection.

2.1.2 A key point is that, in parallel with the projected rise in the size of the population over the next 25 years, Scotland’s population is projected to age markedly. Further details on the national projection results are available on the General Register Office for Scotland’s (GROS) website through the following link:

[http://www.gro-scotland.gov.uk/statistics/publications-and-data/popproj/projected-population-of-scotland-\(2006-based\)/index.html](http://www.gro-scotland.gov.uk/statistics/publications-and-data/popproj/projected-population-of-scotland-(2006-based)/index.html)

2.2 Council areas

2.2.1 The populations of 15 of the 32 council areas in Scotland are projected to increase and 17 to decrease by 2031 as shown in **Table 1**. The map at **Figure 2a** and the chart at **Figure 2b** show the projected percentage change in population between 2006 and 2031 for each council area. In general, most councils adjacent or close to Edinburgh City are projected to increase in size whereas other large urban areas are projected to decline - for example, Aberdeen City, Glasgow City and Dundee City. Other areas in the west, such as Inverclyde, East and West Dunbartonshire and Renfrewshire are also projected to decline.

2.2.2 The council areas which are projected to show the largest relative increases over this period are Perth & Kinross (+22 per cent), West Lothian (+22 per cent), East Lothian (+21 per cent) and Aberdeenshire (+19 per cent). The largest relative population decreases are projected in Inverclyde (-15 per cent), East Dunbartonshire (-15 per cent), Shetland (-10 per cent) and Aberdeen City (-9 per cent). **Table 3** shows the projected percentage change in population for selected years.

2.2.3 The overall projected population change is a result of a combination of natural change (the difference between the number of births and deaths) and migration. The relative importance of each factor differs between areas. **Table A** compares the projected rates of natural change and migration across council and NHS board areas between 2006 and 2031. In some areas of projected population increase such as West Lothian, East Lothian, Aberdeenshire and Edinburgh the population gain over this 25 year period is attributable both to gains from migration and to more births than deaths. In other areas, the projected increase is due to in-migration despite fewer births than deaths. These include Perth & Kinross, Scottish Borders, Orkney, Highland and Angus.

2.2.4 Similarly some areas of projected population decline, such as Inverclyde, East Dunbartonshire and Shetland are projected to experience decreases from both migration and natural change. In Midlothian, Glasgow City and East Renfrewshire the projected population decline is due to net out-migration despite more births than deaths. In contrast, in areas such as Eilean Siar, Dumfries & Galloway and Argyll & Bute the population decline is due to more deaths than births despite net in-migration.

Table A Components of projected population change for Council areas, 2006-2031

Area	Natural change ¹	Net migration ²	Percentage projected population change ³
SCOTLAND	0.3	4.8	5.0
Council areas sorted			
Inverclyde	-6.1	-9.4	-15.5
East Dunbartonshire	-2.4	-12.9	-15.3
Shetland Islands	-2.7	-6.9	-9.6
Aberdeen City	-1.6	-7.6	-9.3
Dundee City	-1.2	-7.9	-9.2
West Dunbartonshire	-1.1	-7.7	-8.8
Renfrewshire	-1.3	-7.0	-8.2
Eilean Siar	-15.0	9.5	-5.5
East Ayrshire	-3.7	-0.9	-4.6
Midlothian	2.5	-6.9	-4.4
North Ayrshire	-4.2	1.3	-2.9
Dumfries & Galloway	-9.1	6.4	-2.7
Moray	-3.2	1.2	-1.9
Argyll & Bute	-8.0	6.5	-1.5
Glasgow City	2.9	-4.2	-1.3
South Ayrshire	-7.9	6.7	-1.2
East Renfrewshire	3.4	-3.5	-0.1
North Lanarkshire	3.4	0.3	3.7
Angus	-6.2	10.8	4.6
Falkirk	0.1	8.4	8.4
Clackmannanshire	1.1	7.8	8.9
South Lanarkshire	0.6	8.7	9.3
Highland	-3.9	14.5	10.7
Stirling	2.8	8.8	11.6
Fife	1.8	10.8	12.6
Orkney Islands	-4.7	19.5	14.7
Scottish Borders	-3.5	19.0	15.6
Edinburgh, City of	5.1	12.0	17.2
Aberdeenshire	2.5	16.3	18.7
East Lothian	5.3	15.9	21.2
West Lothian	11.4	10.6	22.0
Perth & Kinross	-1.3	23.4	22.0

¹Projected natural change between 2006 and 2031 per 100 population at 2006

²Projected change due to migration between 2006 and 2031 per 100 population at 2006

³Ordered by projected population change

Figure 2a Projected percentage change in population, (2006-based), by Council area, 2006-2031

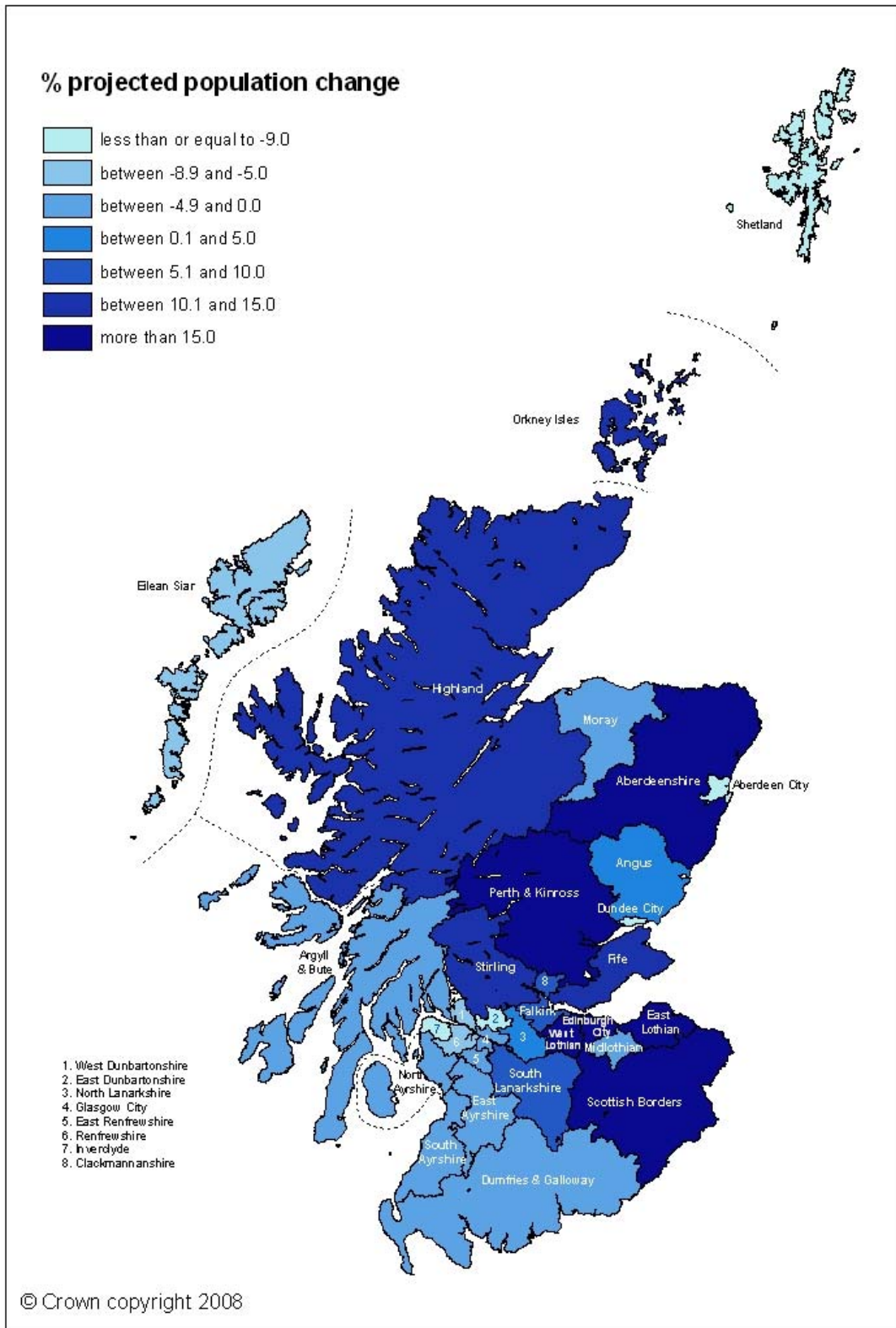
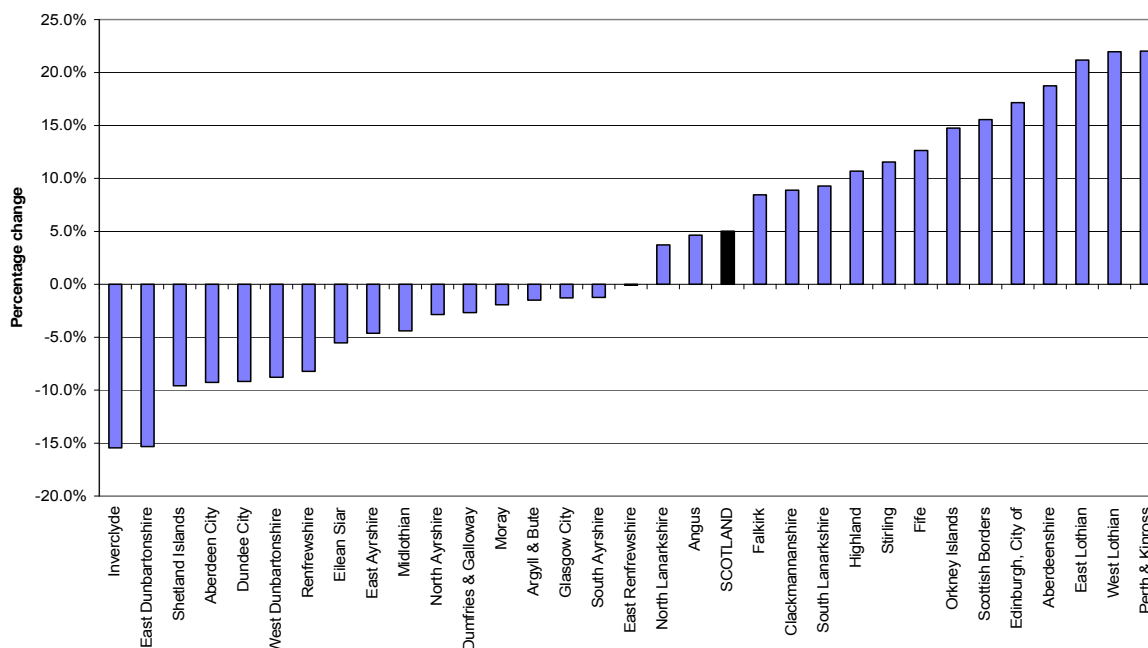


Figure 2b Projected percentage change in population (2006-based), by council area, 2006-2031



2.3 NHS board areas

2.3.1 There are also projected differences in the size of the populations of NHS board areas over the next 25 years. This is illustrated in the map at **Figure 3a** and the chart at **Figure 3b** both of which show the projected percentage change in the population of NHS board areas between 2006 and 2031.

2.3.2 Nine of the NHS board areas are projected to increase and five to decrease. The areas with the largest relative projected increases are Lothian (+16 per cent), Borders (+16 per cent), Orkney (+15 per cent) and Fife (+13 per cent). The areas with the largest relative projected decreases are Shetland (-10 per cent), Western Isles (-6 per cent), Greater Glasgow & Clyde (-4 per cent) and Ayrshire & Arran (-3 per cent). **Table 3** shows the projected percentage change in population for selected years.

2.4 Age structure across Scotland

2.4.1 As well as wide differences in the projected size of the population for different areas, there are large differences in the projected age structure. **Table 2** gives detailed population projections by age group and **Table 3** gives the changes for selected age bands. For Scotland as a whole, the number of children aged 0-15 is projected to decrease by 7 per cent from 0.92 million in 2006 to 0.86 million by 2031. The number of people of working age is projected to increase by less than 1 per cent from 3.21 million to 3.23 million and the number of people of pensionable age to increase by 31 per cent from 0.98 million to 1.29 million.

2.4.2 These changes take into account the increases in the state pension age which will rise from 60 to 65 for women between 2010 and 2020 and then from 65 to 66 for both men and women between 2024 and 2026. A further increase to age 68 for both men and women will occur between 2034 and 2046.

Figure 3a Projected percentage change in population, (2006-based), by NHS board area, 2006-2031 (Map)

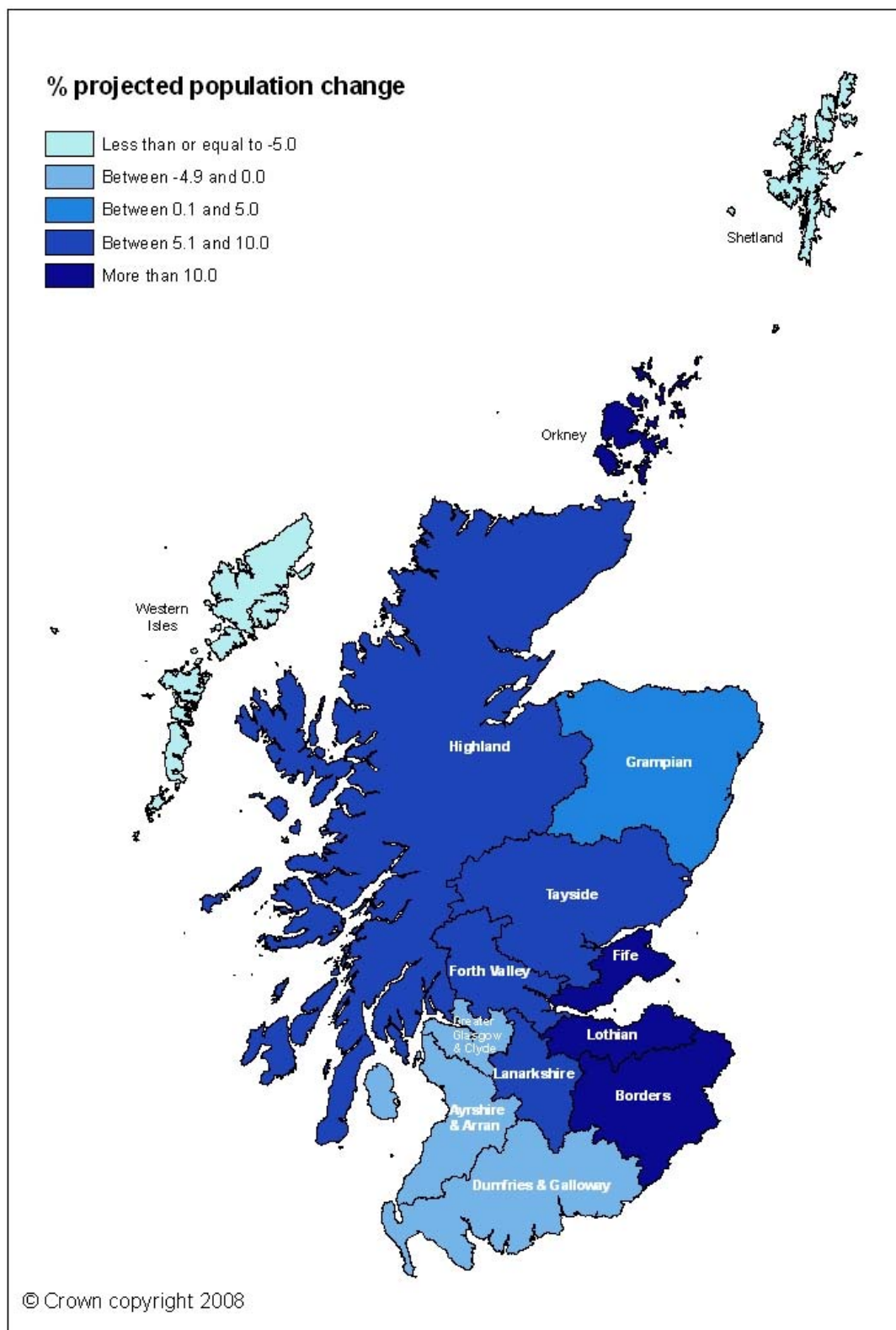
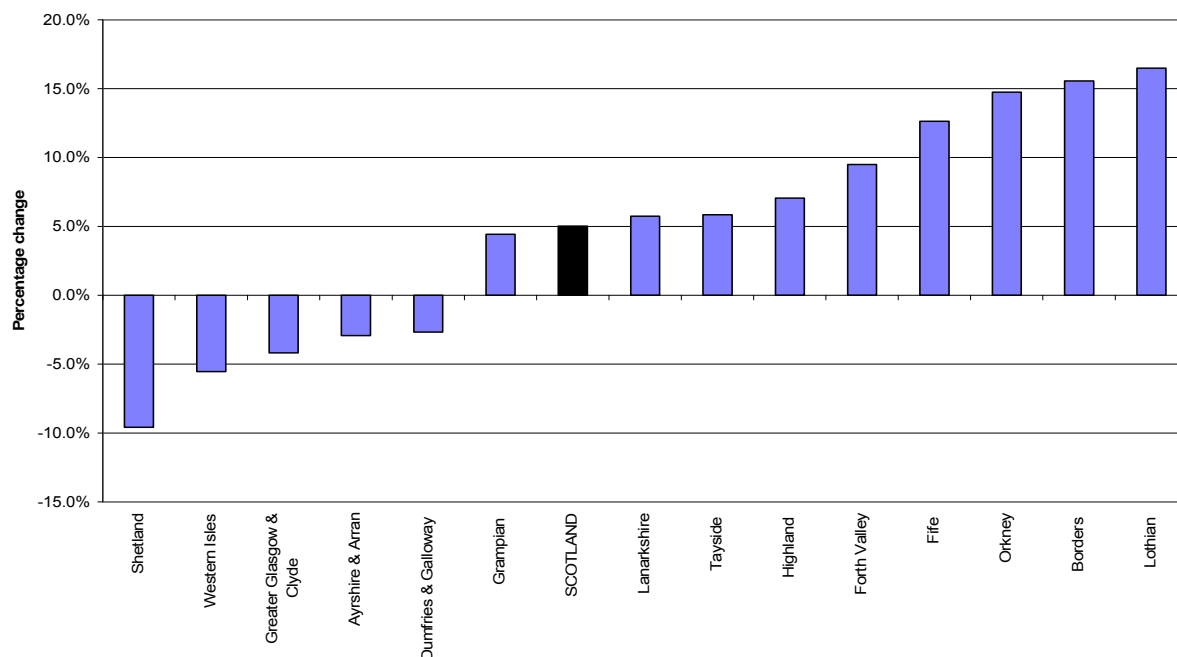
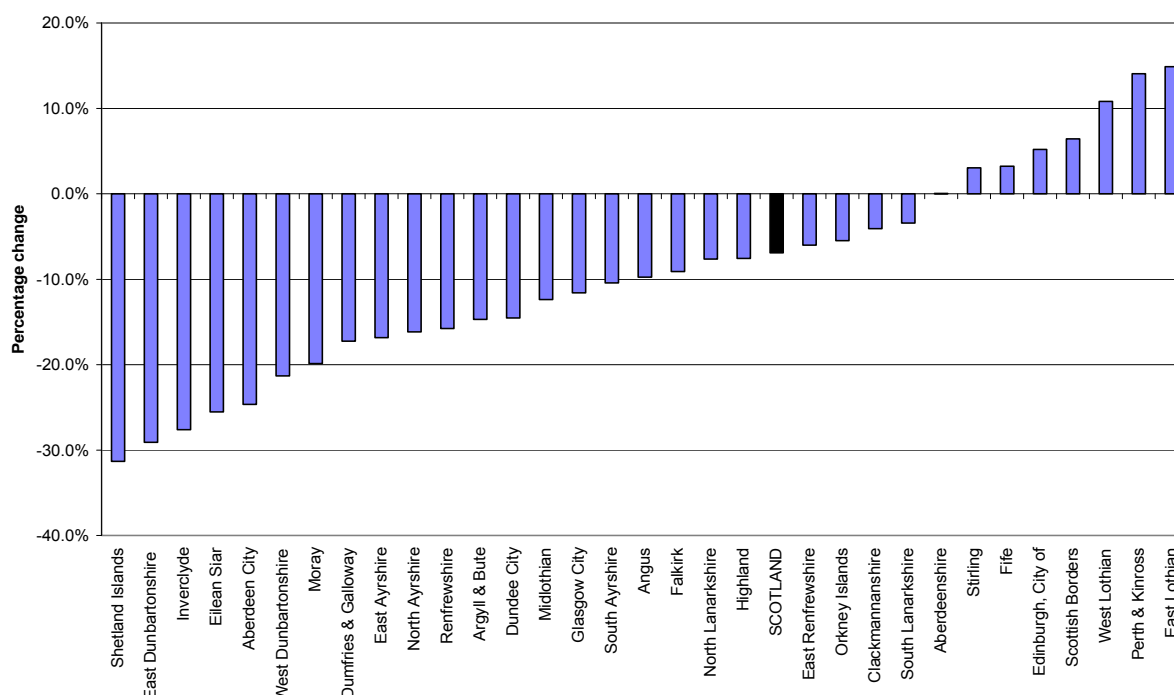


Figure 3b Projected percentage change (2006-based), by NHS board area, 2006-2031



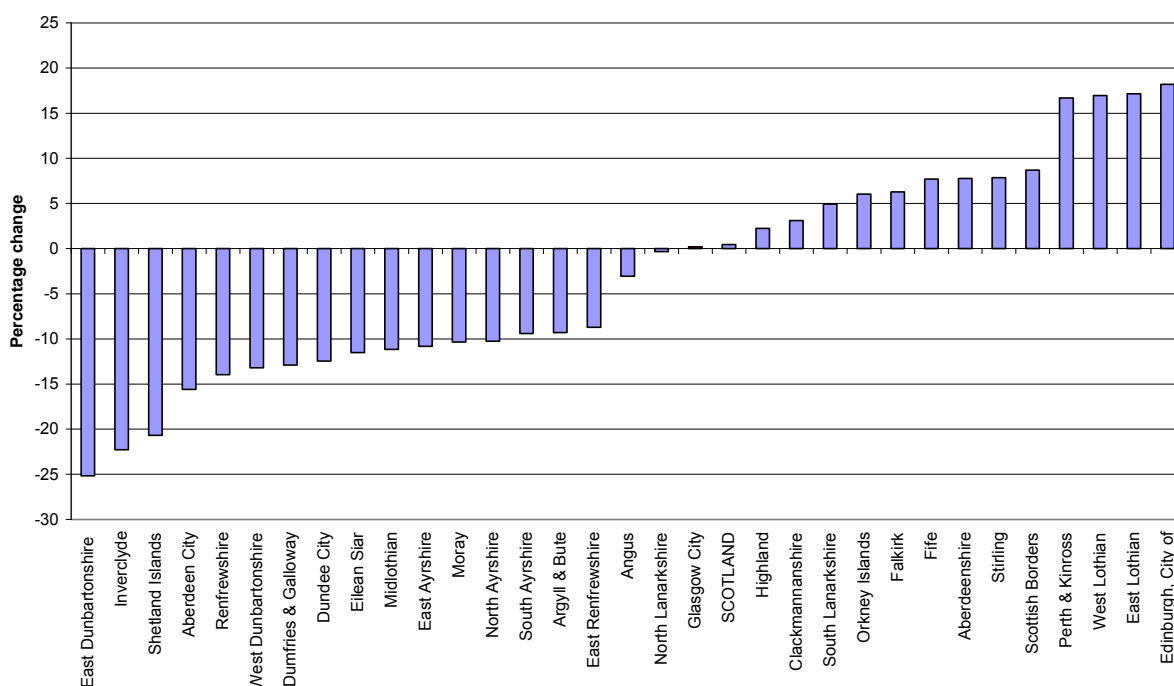
2.4.3 The number of children aged 0-15 is projected to decrease in 24 of the 32 council areas by 2031. The exceptions are East Lothian (+15 per cent), Perth & Kinross (+14 per cent), West Lothian (+11 per cent), Scottish Borders (+6 per cent), Edinburgh (+5 per cent), Fife (+3 per cent), Stirling (+3 per cent) and Aberdeenshire (an increase of less than 1 per cent). The projected decline in the other council areas ranges from -31 per cent in Shetland to -3 per cent in South Lanarkshire as shown in **Figure 4a**.

Figure 4a Projected percentage change in population aged 0-15 (2006-based), by council area, 2006-2031



2.4.4 There are also projected differences in the size of the working age¹ population between council areas by 2031. **Figure 4b and Table 3** show the percentage change in the working age population between 2006 and 2031 and include the change in women's state pension age from 60 to 65 between 2010 and 2020 and the subsequent change to 66 for both men and women by 2026. Of course this is the state retirement age and in practice people will retire at a range of ages. The working age population is projected to increase in 14 council areas by 2031, increasing the most in Edinburgh (+18 per cent), East Lothian (+17 per cent), West Lothian (+17 per cent) and Perth & Kinross (+17 per cent). A decrease is projected in the remaining 18 council areas ranging from a decrease of -25 per cent in East Dunbartonshire to less than -1 per cent in North Lanarkshire.

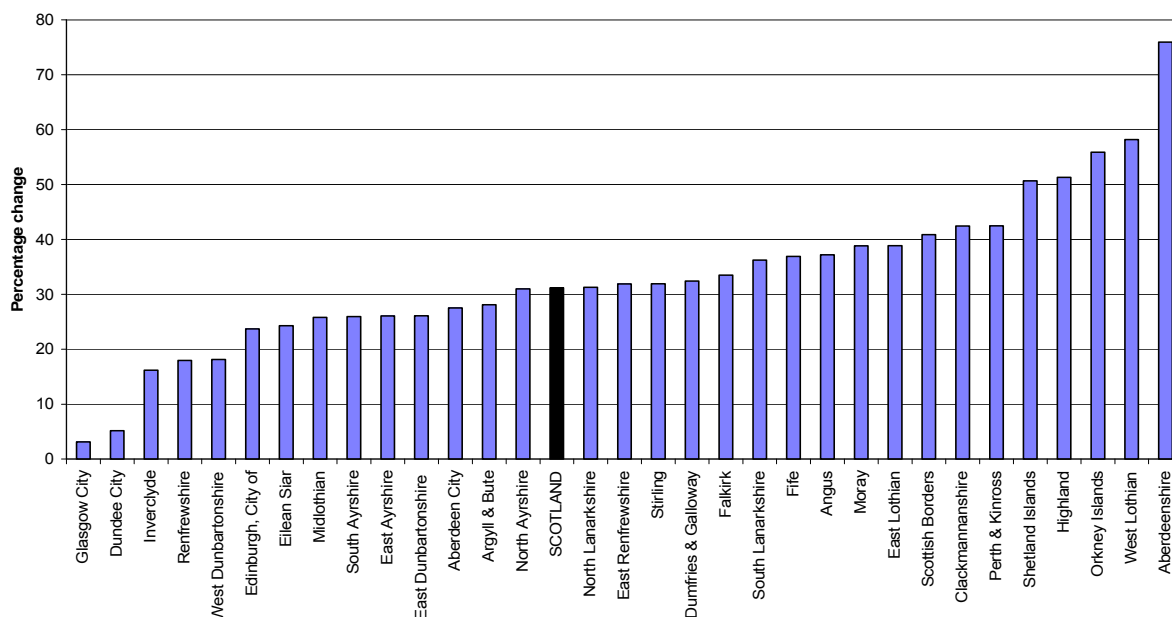
Figure 4b Projected percentage change in population of working age¹ (2006-based), by council area, 2006-2031



¹Includes the change in women's state pension age from 60 to 65 between 2010 and 2020 and the subsequent change of both male and female state pension age to 66 by 2026

2.4.5 There are also differences between council areas in terms of the projected percentage change in the population of pensionable age (taking into account the change in women's state retirement age), as **Figure 4c** shows. The population of pensionable age is projected to increase in all council areas by 2031. The largest relative increases are projected to be in Aberdeenshire (+76 per cent), West Lothian (+58 per cent), Orkney (+56 per cent) and Highland (+51 per cent).

Figure 4c Projected percentage change in population of pensionable age¹ (2006-based), by council area, 2006-2031



¹Includes the change in women's state pension age from 60 to 65 between 2010 and 2020 and the subsequent change of both male and female state pension age to 66 by 2026

2.4.6 By 2031 the Scottish population aged 75 and over is projected to increase by 81 per cent, ranging from a projected increase of 19 per cent in Glasgow City to a projected increase of 156 per cent in Aberdeenshire.

2.4.7 There are similar variations by NHS board area. **Figure 5a, Figure 5b and Figure 5c** show the projected percentage change in the number of children (aged 0-15), people of working age and people of pensionable age by NHS board areas. The number of children is projected to decrease in all NHS board areas except Fife, Lothian and Borders. In addition, the population of working age¹ is projected to decrease in 7 NHS board areas (Shetland, Dumfries & Galloway, Western Isles, Ayrshire & Arran, Greater Glasgow & Clyde, Grampian and Highland) and to increase in the other 7. The population of pensionable² age is projected to increase in all NHS board areas, ranging from an increase of 14 per cent in Greater Glasgow & Clyde to +56 per cent in Orkney.

2.4.8 **Table B** summarises these changes, moving from the area with the greatest projected population decrease (Inverclyde) to the area with the largest increase (Perth & Kinross). In general the decreases in population are largely associated with large decreases in children and working age population, while increases are associated with large increases in the pensionable aged population.

¹ Working age is 16-59 for women and 16-64 for men until 2010; between 2010 and 2020 working age becomes 16-64 for women. Between 2024 and 2026 working age for both men and women becomes 16-65 and changes again, in two further steps, to 16-67 by 2046.

² Pensionable age is 65 for men, 60 for women until 2010; between 2010 and 2020 pensionable age for women increases to 65. Between 2024 and 2026 the pensionable age for both men and women increases to 66 and changes again, in two further steps, to 68 by 2046.

Figure 5a Projected percentage change in population aged 0-15 (2006-based), by NHS board area, 2006-2031

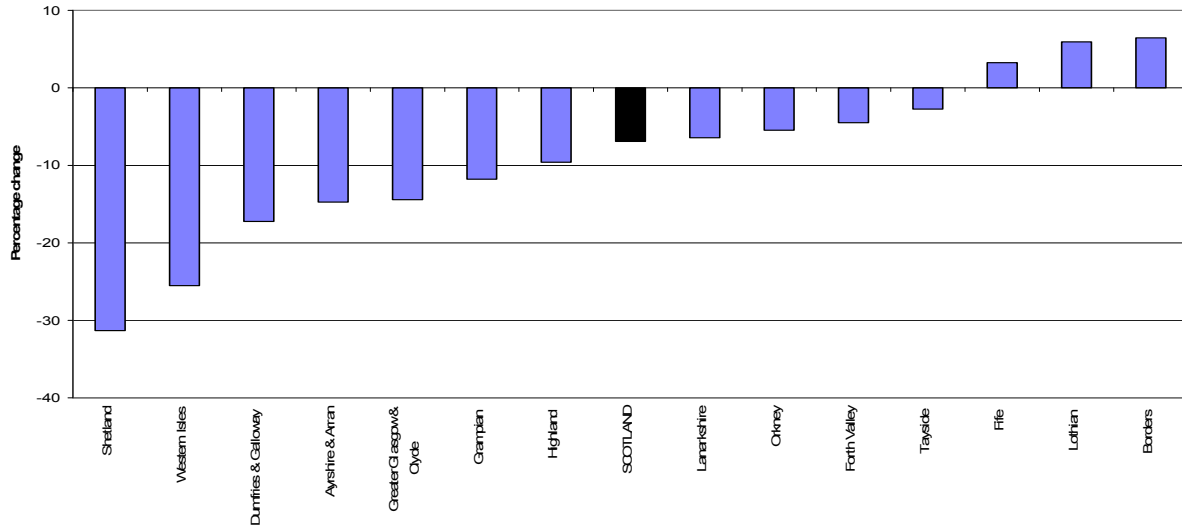
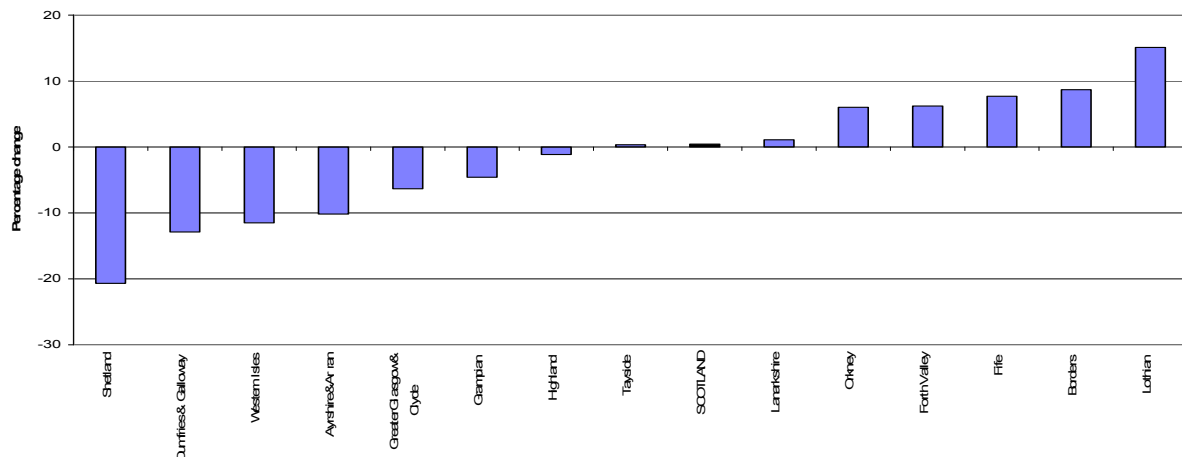
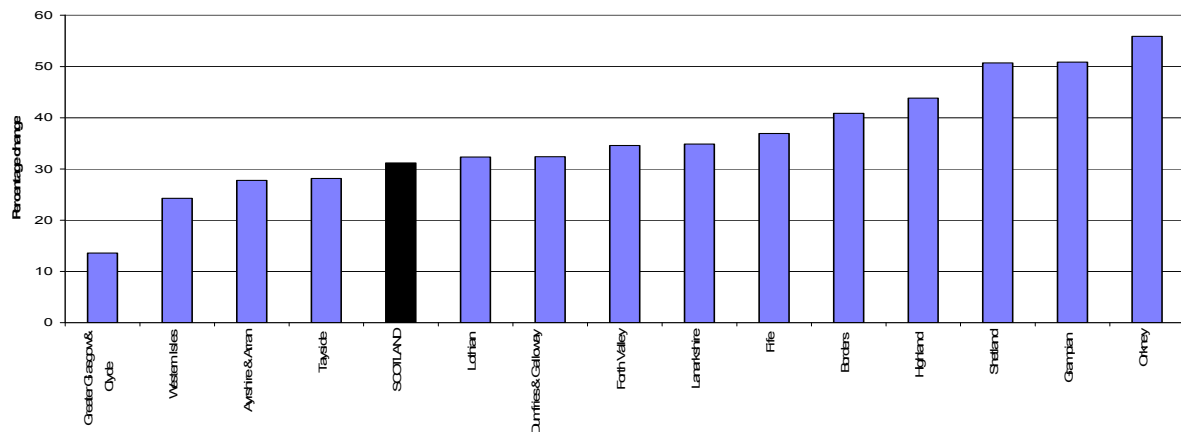


Figure 5b Projected percentage change in population of working age¹ (2006-based), by NHS board area, 2006-2031



¹Includes the change in women's state pension age from 60 to 65 between 2010 and 2020 and the subsequent change of both male and female state pension age to 66 by 2026

Figure 5c Projected percentage change in population aged¹ (2006-based), by NHS board area, 2006-2031



¹Includes the change in women's state pension age from 60 to 65 between 2010 and 2020 and the subsequent change of both male and female state pension age to 66 by 2026

Table B Projected percentage change in population (2006-based), by broad age group and council areas, 2006-2031

Area	All ages	Children (0-15)	Working Ages ¹	Pensionable Ages ¹
SCOTLAND	5.0	-6.9	0.4	31.2
Council areas sorted				
Inverclyde	-15.5	-27.6	-22.3	16.2
East Dunbartonshire	-15.3	-29.1	-25.2	26.1
Shetland Islands	-9.6	-31.3	-20.7	50.7
Aberdeen City	-9.3	-24.6	-15.6	27.5
Dundee City	-9.2	-14.5	-12.4	5.1
West Dunbartonshire	-8.8	-21.3	-13.2	18.1
Renfrewshire	-8.2	-15.8	-14.0	17.9
Eilean Siar	-5.5	-25.5	-11.5	24.3
East Ayrshire	-4.6	-16.8	-10.8	26.1
Midlothian	-4.4	-12.4	-11.2	25.8
North Ayrshire	-2.9	-16.2	-10.3	31.0
Dumfries & Galloway	-2.7	-17.2	-12.9	32.4
Moray	-1.9	-19.9	-10.3	38.8
Argyll & Bute	-1.5	-14.7	-9.3	28.1
Glasgow City	-1.3	-11.6	0.2	3.1
South Ayrshire	-1.2	-10.4	-9.4	25.9
East Renfrewshire	-0.1	-6.0	-8.7	31.9
North Lanarkshire	3.7	-7.6	-0.3	31.3
Angus	4.6	-9.8	-3.1	37.2
Falkirk	8.4	-9.1	6.3	33.5
Clackmannanshire	8.9	-4.1	3.1	42.4
South Lanarkshire	9.3	-3.4	4.9	36.3
Highland	10.7	-7.6	2.2	51.3
Stirling	11.6	3.0	7.8	31.9
Fife	12.6	3.2	7.7	36.9
Orkney Islands	14.7	-5.5	6.0	55.9
Scottish Borders	15.6	6.4	8.7	40.9
Edinburgh, City of	17.2	5.2	18.2	23.7
Aberdeenshire	18.7	0.1	7.8	75.9
East Lothian	21.2	14.9	17.1	38.8
West Lothian	22.0	10.8	16.9	58.2
Perth & Kinross	22.0	14.1	16.7	42.5

¹Includes the change in women's state pension age from 60 to 65 between 2010 and 2020 and the subsequent change of both male and female state pension age to 66 by 2026.

2.4.9 The preceding paragraphs describe the projected percentage change by administrative area. It is also useful to look at the existing and projected age structure of the different areas. **Figure 6a and Figure 6b** and **Figure 7a and Figure 7b** show the proportion of the population who are children (aged 0-15), of working age and of pensionable age in 2006 and 2031 for council and NHS board areas respectively. The projected proportion of the population of Scotland of pensionable age increases from 19 per cent in 2006 to 24 per cent in 2031. The pattern is similar in nearly all areas. Amongst council areas in 2006, Dumfries & Galloway, Eilean Siar and South Ayrshire have the highest proportions of people of pensionable age (all 24 per cent) and West Lothian (15 per cent), Glasgow City (17 per cent) and Edinburgh (17 per cent) the lowest. The projected picture by 2031 is similar with Dumfries & Galloway and Eilean Siar still highest at 33 per cent and 31 per cent respectively. Glasgow City (17 per cent), Edinburgh (18 per cent) and West Lothian (20 per cent) still have the lowest proportions.

Figure 6a Age structure of council areas in 2006: children, working age, and pensionable age (%), (ranked by percentage of pensionable age)

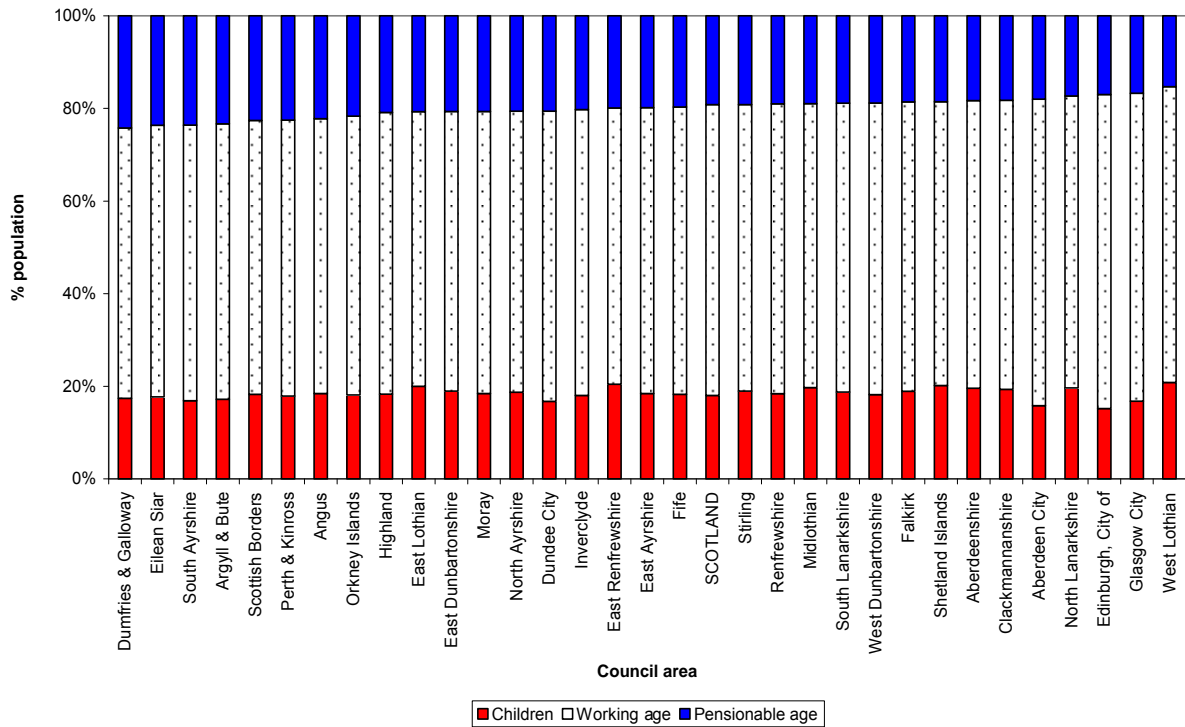
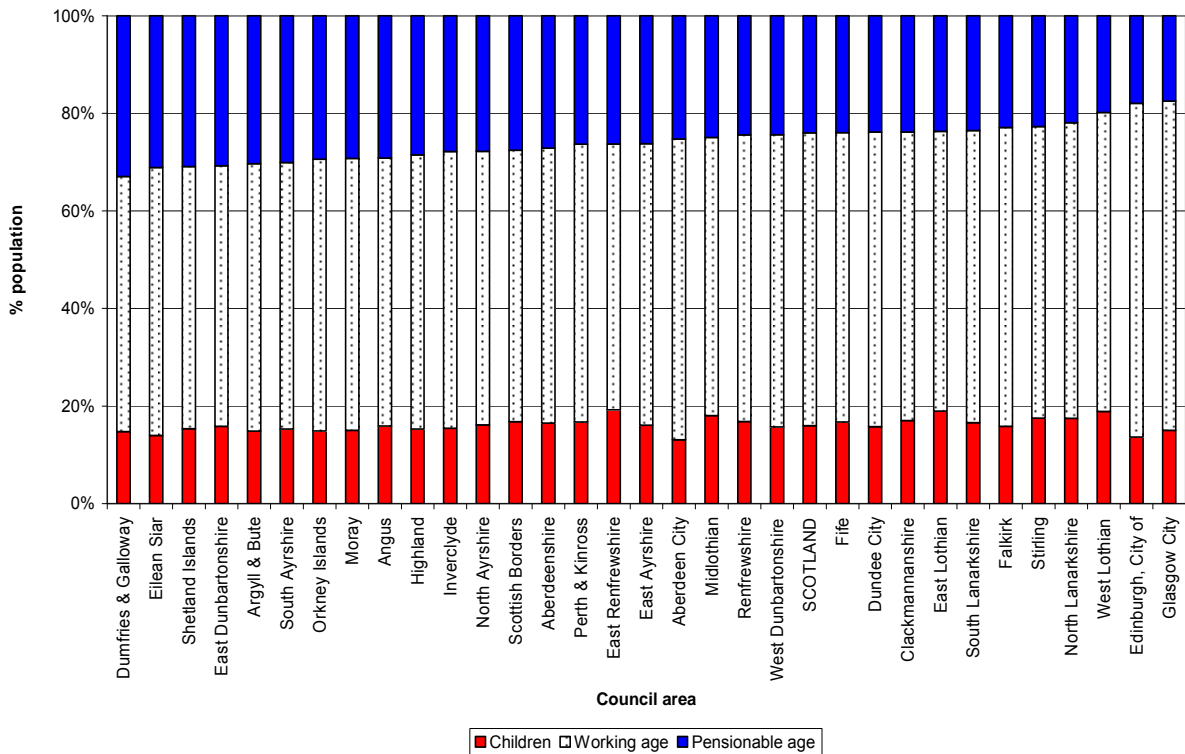


Figure 6b Projected age structure of council areas in 2031: children, working age, and pensionable age (%), (ranked by percentage of pensionable age)



2.4.10 For NHS board areas a comparable pattern can be seen. In 2006, Dumfries & Galloway NHS board area has the highest proportion of its population of pensionable age (24 per cent) and it is still projected to have the highest proportion by 2031 (33 per cent). The area with the lowest proportion of its population of pensionable age in

2006 is Lothian (17 per cent) and in 2031 the proportion of pensionable age is still lowest in Lothian (20 per cent). A key point from all four charts is that the population in nearly all areas is projected to age by 2031.

Figure 7a Age structure of NHS board areas in 2006: children, working age, and pensionable age (%), (ranked by percentage of pensionable age)

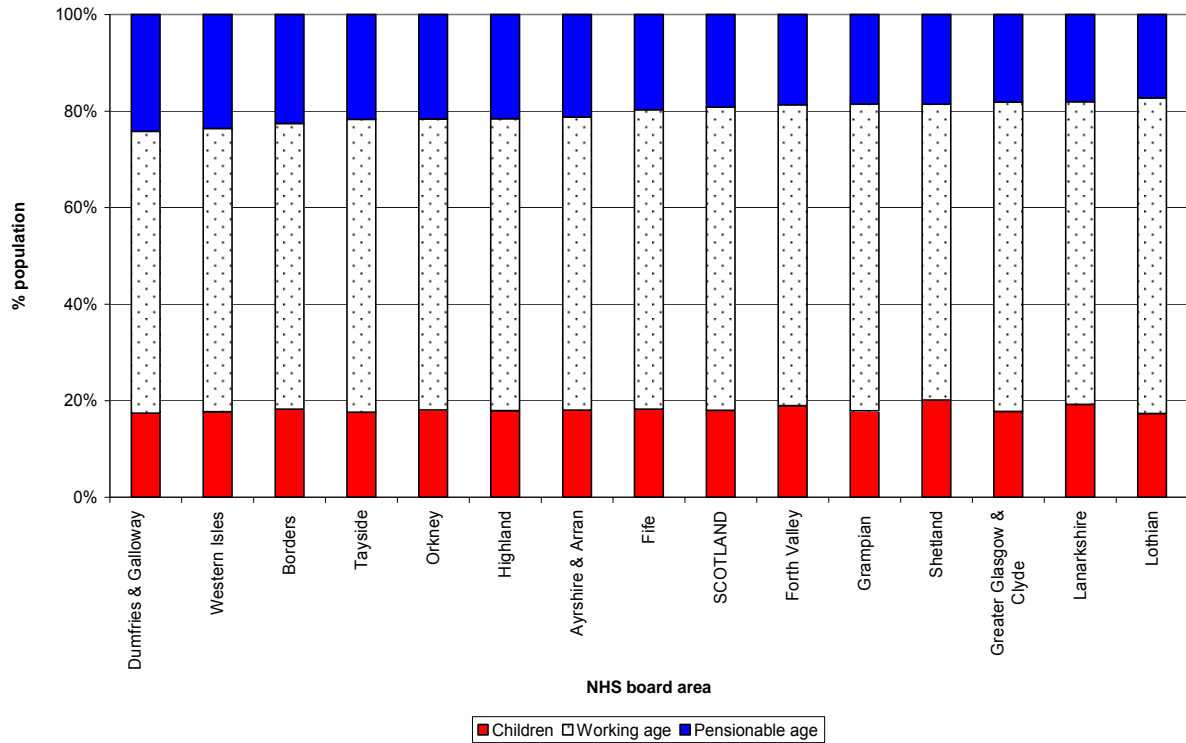
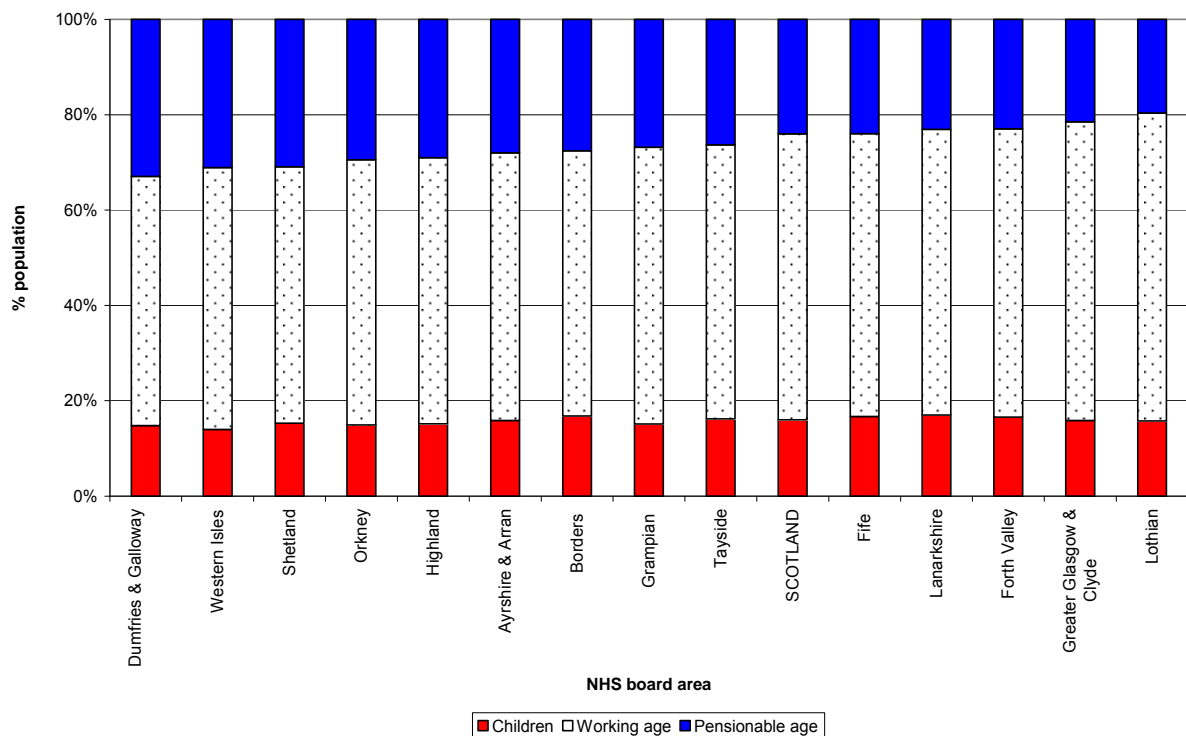


Figure 7b Projected age structure of NHS board areas in 2031 (2006-based): children, working age, and pensionable age (%), (ranked by percentage of pensionable age)



3. Comparisons with the 2004-based projections

3.1 The differences between the latest sub-national projections and the previous 2004-based projections are summarised in **Table 5** which compares the populations of administrative areas under the two projections at selected years (2006, 2011, 2016, 2021 and 2024).

3.2 The 2004-based projection showed Scotland's population to be 5.11 million by 2006 compared with the 2006 mid-year estimate of 5.12 million. The difference of about 8,400 is mainly due to more people migrating to Scotland than had been assumed although there were also more births and slightly fewer deaths than had been assumed. By 2011 the difference between Scotland's population under the two projections increases to about 86,000, though some of the difference is accounted for by the higher starting population in 2006. The difference by 2016 is about 144,000 (from 5.13 million under the 2004-based projection to 5.27 million under the 2006-based projection). By 2021 the difference is almost 200,000 and by 2024 around 232,000. There are similar differences by administrative areas under the two projections. These differences are seen in **Figure 8** and **Figure 9** which show the percentage change between the 2004 and 2006-based population projections in the population projected for 2024, which was the last year of the 2004-based projections.

Figure 8 Percentage difference between projected 2024 population using 2004-based projections and using 2006-based projections, by council area

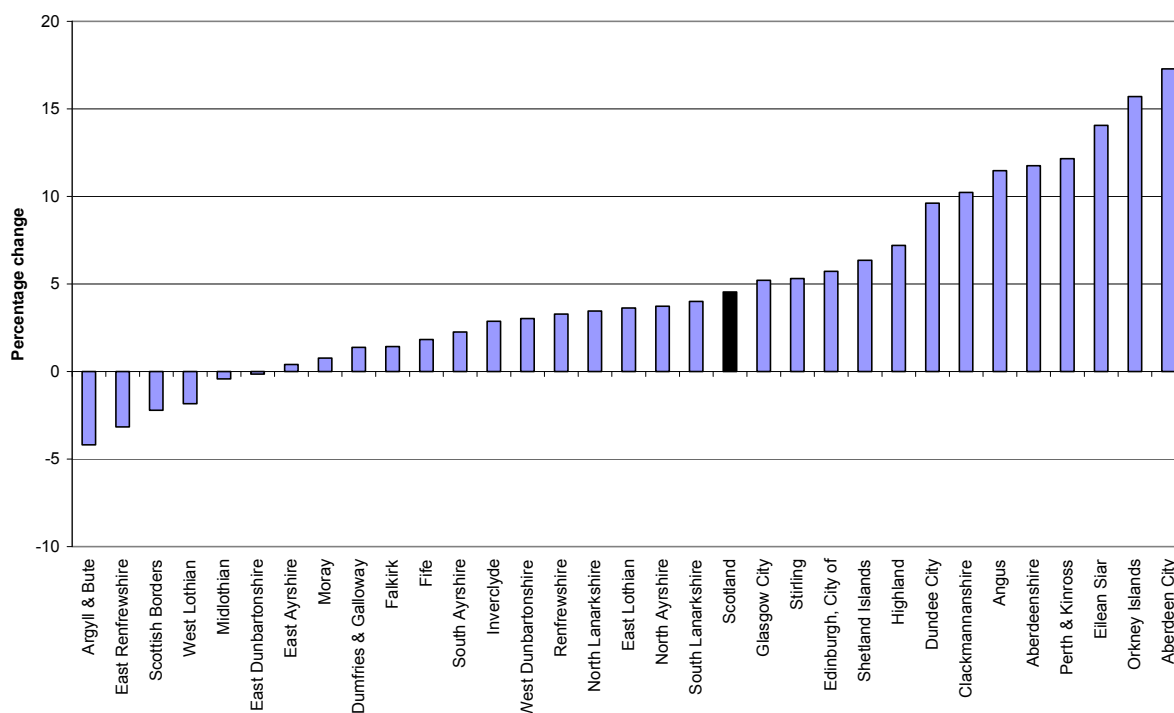
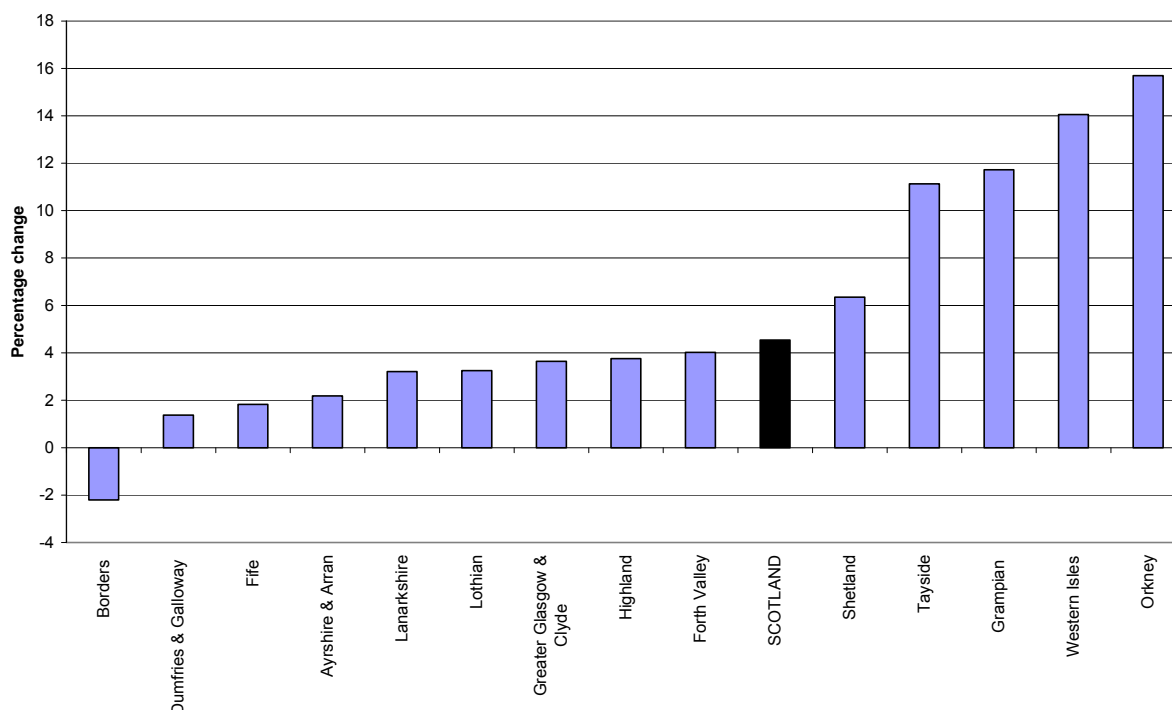


Figure 9 Percentage change between 2004 and 2006-based population projections in 2024, by NHS board area



3.3 **Figure 8** shows that, by 2024, the population of most council areas is higher under the 2006-based projection than under the 2004-based projection. There are six exceptions (Argyll & Bute, East Renfrewshire, Scottish Borders, West Lothian, Midlothian and East Dunbartonshire). In the other council areas, the 2006-based projections are higher, with the biggest percentage increases in Aberdeen City, Orkney and Eilean Siar. **Figure 9** shows that by 2024 all the NHS boards have higher populations under the 2006-based projection except Borders. These changes have come about because of the different starting point in the 2006 mid-year estimate and because of the changes to the fertility, mortality and migration assumptions. When looking at the comparisons between the projections it is important to bear in mind the uses and limitation of projections described in **Section 6**. More details about the assumptions can be found in **Section 5**.

4. High migration variant projection

4.1 Most of this paper concentrates on the “principal” projection. This uses assumptions about fertility, mortality and migration which are thought to be most likely to occur over the next 25 years. A number of “variant” projections are produced at Scotland level and, for the first time, one of these – the high migration variant – has been produced for council and NHS board areas. This variant projection uses the same fertility and mortality assumptions as the principal projection but assumes higher levels of net in-migration to Scotland. It should be noted that only moves to and from the rest of the UK and overseas are affected by this. The number of people moving between council and NHS board areas within Scotland does not change from the principal projection and so areas where the population is most affected by migration within Scotland will not change as much as those where international migration has the greater effect.

4.2 The high migration variant projection shows Scotland's population rising from 5.12 million in 2006 to 5.63 million in 2031. This compares to an increase to 5.37 million in 2031 under the principal projection. **Table 6** shows the projected population for each council and NHS board area under both the principal and high migration variant projections for selected years as well as the percentage difference between the two projections in 2031.

4.3 The chart at **Figure 10a** shows that the populations of 23 of the 32 council areas in Scotland are projected to increase and 9 to decrease by 2031 under the high migration variant projection. In general the largest increases and decreases occur in the same areas as under the principal projection but the size of the changes differ.

4.4 As in the principal projection, the council area projected to show the largest relative increase over this period is Perth & Kinross (+27 per cent). Edinburgh City (+27 per cent) shows the second biggest increase under this projection and West Lothian (+26 per cent), East Lothian (+24 per cent) and Aberdeenshire (+24 per cent) also show large increases in population - as they did under the principal projection. Again as in the principal projection, Inverclyde (-13 per cent) and East Dunbartonshire (-12 per cent) show the largest relative population decreases but Shetland (-4 per cent) and Aberdeen City (+1 per cent) no longer show such large decreases relative to other areas.

4.5 The populations in thirteen of the NHS board areas are projected to increase and only one to decrease (Shetland, -4 per cent) as can be seen in **Figure 10b**. As before, Lothian (+24 per cent), Borders (+20 per cent), Fife (+17 per cent) and Orkney (+14 per cent) show the biggest increases.

4.6 The final column in **Table 6** shows that the high migration variant projection has the biggest relative impact on Aberdeen City (where the 2031 population is 11 per cent higher than under the principal projection), Edinburgh (8 per cent higher), Moray (7 per cent higher) and Shetland (also 7 per cent higher). As **Figure 12** shows, these are all areas which gain migrants from outwith Scotland.

Figure 10a Projected percentage change in population under high migration variant projection (2006-based), by council area, 2006-2031

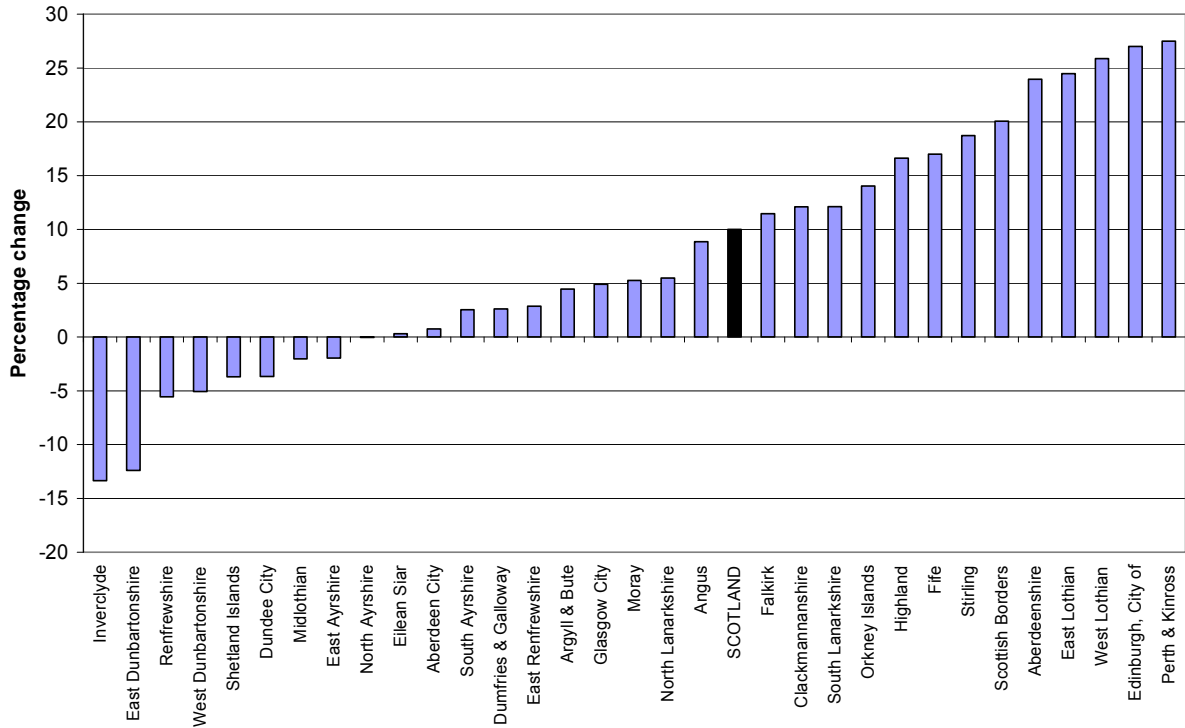
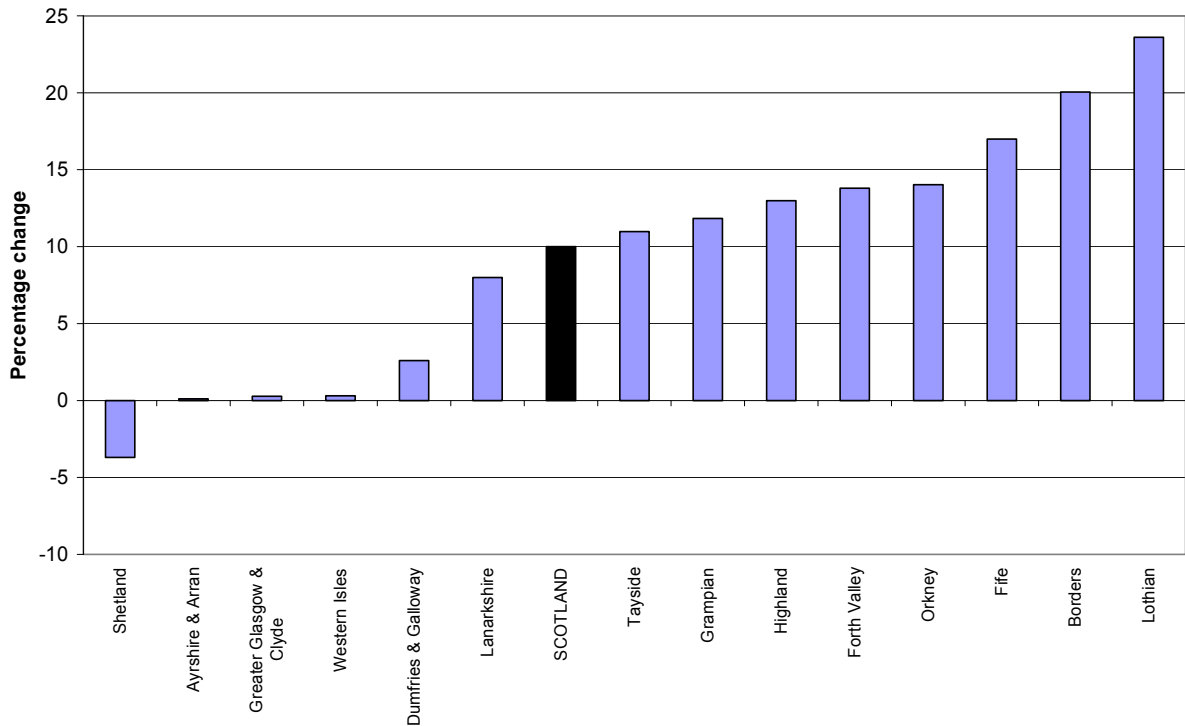


Figure 10b Projected percentage change in population under high migration variant projection (2006-based), by NHS board area, 2006-2031



5. Methodology and assumptions

5.1 Methodology

5.1.1 The results are produced by the demographic component method using a single year projection model (**see paragraph 5.1.2**). That is, a projection is made by sex and single year of age (up to age 90 & over) for each future year. This is done for arithmetical convenience and should not be taken to imply that reliable projections can be made in such detail. However, it provides "building blocks" which users can aggregate into age-groups of their choice for the years in which they are interested. For example, the production of results in standard five-year age groups (0-4, 5-9, 10-14, etc.) does not help the education planner wishing to know the size of the future population of secondary school age. Also, as some planning is done on a "rolling" basis (for example 10 years from a moving base date), it is useful to be able to provide a projection for any future year rather than just selected years.

5.1.2 The projection starts with the population estimates for the base year, disaggregated by single year of age, sex, and area. This base population is then projected one year ahead. First, an estimate of the numbers surviving to be one year older is made by applying a series of mortality rates to give the numbers of deaths, and hence survivors, at each age. The numbers of live births in the year are produced, using fertility rates in combination with the female populations of child bearing age; and an allowance is made for infant mortality. Lastly, the expected number and age/sex structure of people entering and leaving the area is taken into account in order to cover changes in the population due to migration. These three components of population change, together with the starting population, combine to form a projection of the population one year from the base date. The process can be repeated as often as required. For each year of the projection period, it is necessary to make assumptions about the future fertility rates (to give the number of births), mortality rates (for deaths) and migration. The following paragraphs describe the base population, the small changes made to the software and the method compared with previous projections as well as the assumptions made in the new projections.

5.2 Base population

5.2.1 The Registrar General's mid-2006 population estimates were used as the base population. These were first published in April 2007 but were revised in July 2007 and it is these revised figures which are used as the base population. These cover all persons usually resident in each area, whatever their nationality. Usual residents temporarily away from home are included, but visitors are excluded. Students are taken to be resident at their term-time address. Members of HM and non-UK Armed Forces stationed in Scotland are included; HM forces stationed outside Scotland are excluded. Population figures relate to 30 June 2006 and ages relate to age last birthday.

5.3 Projections software system and other small method changes

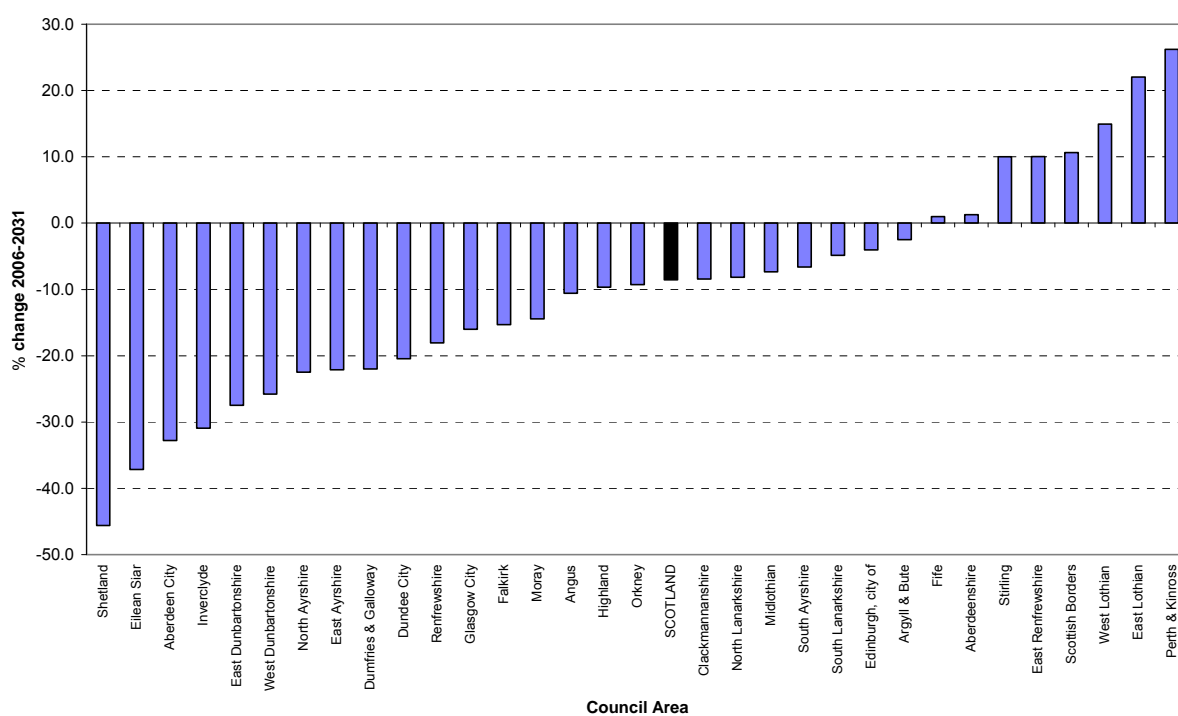
5.3.1 The software used to produce the population projections is an in-house MS Excel macro system which has been developed over a number of years. The system runs on 36 "building bricks" – areas which aggregate to both council and NHS board areas.

5.4 Fertility

5.4.1 The projected number of births was obtained by applying age specific fertility² rates to the numbers of women at each childbearing age, for each year of the projection period. In determining the fertility rates used in the national projections for Scotland, assumptions were made about the average completed family size for successive generations of women. This measure tends to be more stable over time than fertility rates for specific years (so-called period fertility rates), because of generational differences in the timing of having families. It was assumed that the average completed family size will continue to decline from around 1.90 children per woman for those born in the late 1950s and now reaching the end of their childbearing lives, before levelling off at 1.65 for those born in the 1990s and later. The number of births is expected to continue the recently-observed rise before peaking at around 57,600 in 2011 and falling to around 50,300 in 2031. The resultant age specific fertility rates assumed for Scotland as a whole are given in **Annex A**. More information on the fertility assumptions for Scotland can be found in Annex A to the publication “Projected Population of Scotland (2006-based)” on the General Register Office for Scotland’s website.

5.4.2 The projected number of births by administrative area is shown in **Table 4**. The percentage change in the number of projected births between 2006 and 2031 by council area is also shown in **Figure 11**.

Figure 11 Projected percentage change in births (2006-based), by council area, 2006-2031



² Fertility in this paper refers to the demographic number of children that would be born rather than the common usage of the term referring to biological fertility.

5.4.3 For local areas, the assumed national fertility rates have been adjusted to take account of local variations observed in the five year period preceding the projection. The local scaling factors used to adjust the national rates are given in **Annex C**.

5.5 Mortality

5.5.1 The projected number of deaths each year was calculated by applying mortality rates by age and sex to the appropriate sub-populations. The national rates for the first year of the projections, 2006-07, were based on autumn 2007 estimates of the numbers of deaths at each age in that period. The mortality rates for later years were based on long-term trends before 2006. Future improvements in mortality rates are based on the trend observed in the period 1961 to 2005. It is assumed that annual rates of reduction in mortality rates will tend toward a common reduction at each age of 1 percent a year by 2031. Thereafter, the mortality improvement is assumed to continue at this rate. In line with long-term trends, it has been assumed that the mortality rates for Scotland will continue to be higher at most ages than those for England and Wales.

5.5.2 Based on these rates, expectation of life at birth is projected to increase from 74.5 years in 2005 to 80.4 in 2031 for men; and from 79.5 in 2005 to 84.8 in 2031 for women. The national mortality rates are shown, for selected ages and for selected years of the projection, in **Annex B**.

5.5.3 Similar to the fertility assumptions for local areas, the assumed national mortality rates have been adjusted to take account of local variations observed in the five year period preceding the projections. As recommended by the Population Projections Working Group (PPWG) different scaling factors were used for different age groups to reflect the fact that the variation in mortality rates between areas will itself vary between age groups. Rather than using a single scaling factor for men and another for women different scaling factors were used for age groups 0-59, 60-79 and 80+ and for men and women meaning that up to 6 scaling factors were used for each area. In some smaller areas, fewer scaling factors were used as the small numbers of deaths were subject to large fluctuations. The local scaling factors used to adjust the national rates are shown in **Annex C**. More information on the mortality assumptions for Scotland can be found in Annex B to the publication "Projected Population of Scotland (2006-based)" on the General Register Office for Scotland's website.

5.6 Migration

5.6.1 Assumptions about future levels of migration to and from Scotland were based on analysis of trends in civilian migration to and from the UK and between the four constituent countries of the UK. Reflecting the most recent information, the principal projection assumes net in-migration of 8,500 from 2012-13 onwards; the previous sub-national projections, assumed net in-migration of 4,000 per year for the long-term. In the first six years of the new projection higher net inflows are assumed, reflecting these recent trends. It is assumed that in the short-term there will be a net inflow of 20,500 migrants to Scotland in 2006-2007, 16,000 in 2007-2008, 14,000 in 2008-2009, 11,500 in 2009-2010, 10,500 in 2010-2011 and 9,500 in 2011-2012 before the level drops to an assumed net inflow of 8,500 for the rest of the projection period. This reflects recent increases in the number of people migrating to Scotland, after many years when net out-migration was the norm.

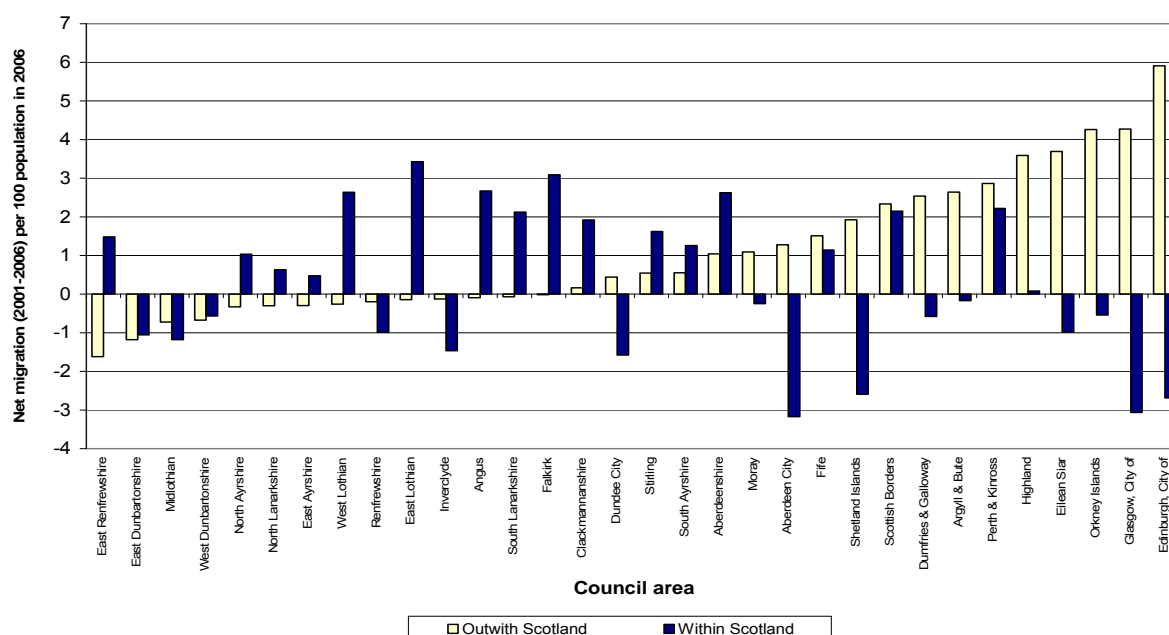
5.6.2 For the high migration variant projection net in-migration of 17,000 is assumed from 2012-13 onward with higher levels (starting at 24,750 in 2006-07) assumed for the first six years.

5.6.3 More information on the migration assumptions for Scotland can be found in Annex C to the publication “Projected Population of Scotland (2006-based)” on the General Register Office for Scotland’s website.

5.6.4 The net migration assumptions for local areas used in the principal projection were made after consultation with local authorities. The initial long term assumptions were calculated by taking 5 year averages of in and out migration between councils within Scotland and between councils and other countries. These averages were scaled to match the migration assumptions used in the national projections. The short term assumptions were calculated by moving between the 2005/06 migration estimate and the long term assumption at the same rate as the national figures changed. The assumptions for each area are shown in **Annex D**. It is important to remember that the local assumptions have to match the totals used in the national projections and that for the longer term, migration assumptions are highly speculative.

5.6.5 For the high migration variant projection a similar method is used but this time the local assumptions have to match with the higher totals used in the national variant projection. This higher net inflow only affects moves to and from outwith Scotland i.e. it has no impact on moves within Scotland. Migration to and from an area is made up of a mixture of within Scotland and outwith Scotland migration and the extent to which a particular area experiences more of one or the other type of migration will determine the impact of the variant projection. **Figure 12** shows the council areas which have gained large number of migrants from other countries over the past 5 years and which are therefore most affected by the high migration variant. These include Edinburgh, Glasgow City, Orkney, Eilean Siar and Highland. The trends in net migration for the previous five years are shown in **Annex F**. The high migration variant assumptions for each area are shown in **Annex E**.

Figure 12 Migration to and from outwith Scotland and to and from other council areas within Scotland



5.6.6 Council and NHS board area specific age/sex distributions have been assumed for the in- and out- migrant flows using information on movement of patients from the National Health Service Central Register (NHSCR) observed in the previous three years and the Community Health Index (CHI), again over the previous 3 years. For the first time the CHI has been used in place of census data. These distributions have been made consistent with the age/sex distribution used for Scotland in the national projection.

6. Uses and limitations of projections

6.1 Population projections have limitations. A projection is a calculation showing what happens if particular assumptions are made. The sub-national population projections are trend-based. They are, therefore, not policy-based forecasts of what the government expects to happen. Many social and economic factors influence population change including policies adopted by both central and local government. The relationships between the various factors are complex and largely unknown. A principal projection and a single variant projection is given for each area in this publication, but both involve inherent uncertainty which is difficult to quantify

6.2 The effect of the assumptions - about future migration, fertility and mortality - is often limited by the inertia in population change: the future population of an area is strongly influenced by the initial base population. As the process of change is cumulative, the reliability of projections decreases over time. Change affects some populations more rapidly and more seriously than others. Thus, projections for areas with small populations tend to be less reliable than those for areas with large populations, because the former are usually affected more by migration. Projections of the number of adults (particularly elderly people) are usually more reliable than those for children because of difficulties in projecting levels of fertility and parental migration. The size of the migration flows, and the uncertainty of future trends, mean that for many areas the migration assumptions are more critical than the fertility and mortality assumptions. Hence the migration assumptions can have a large effect on small populations in the long-term (e.g. the Shetland Islands where there is a small population) and also for some other areas with larger populations (e.g. East Dunbartonshire).

6.3 Central government population projections set local and regional population patterns into a national context. They are trend-based. However, it should be remembered that new local planning policies are often intended to modify past trends. Structure plans may be based on reasoned and agreed departures from the projections that seem better able to fit particular local circumstances.

7. Consequences of projections

7.1 Population projections, like some other types of projections, may indicate that existing trends and policies are likely to lead to outcomes, which are judged undesirable. If new policies are then introduced, they may result in the original projections not being realised. However, this means the projections will have fulfilled one of their prime functions, to show the consequences of present demographic trends with sufficient notice for any necessary action to be taken.

8. Further information

Sub-national projections

The projections for the administrative areas of Scotland summarised in this booklet are also available by single year of age and sex for each year of the projection period, 2006 to 2031 from the detailed tables on the General Register Office for Scotland's website. They are also available from:

Customer Services
General Register Office for Scotland
Census Analysis and Dissemination Branch
Ladywell House
Ladywell Road
EDINBURGH, EH12 7TF

Telephone: 0131 314 4243
Fax: 0131 314 4696
Email: customer@gro-scotland.gsi.gov.uk

National projections

National population projections for Scotland are prepared by the Office for National Statistics (ONS), in consultation with, and at the request of, the Registrar General. The latest projections, to which the sub-national projections in this booklet have been made consistent, are based on the mid-2006 population estimates. The projections cover the period to 2076 and are available by single year of age and sex for each year of the projection period. More detailed data is available from the Government Actuary's Department website (www.gad.gov.uk) or by contacting ONS at:

Office for National Statistics
National Population Projections Branch
D3/05
1 Drummond Gate
London SW1V 2QQ

Telephone: Tel: 020 7533 5222
Email: natpopproj@ons.gsi.gov.uk

Other related data available from the General Register Office for Scotland

Estimates of the resident population of Scotland are prepared annually by the General Register Office for Scotland. They are available by sex and single year of age for each of the administrative areas of Scotland. The estimates relate to 30 June of the year covered and, generally, they are released during April of the following year. A substantial amount of historical data is available. Information is also available on a wide range of related topics such as migration estimates and data from the 2001 and earlier Censuses of Population.

The population projections benefit from the advice of the SCOTSTAT Population and Migration Statistics Committee (PAMS). Its papers and minutes are available through the following link:

<http://www.gro-scotland.gov.uk/statistics/user-consultation-groups-seminars/pams/index.html>

Table 1 Projected population by council and NHS board area (2006-based), 2006-2031

Area	2006	2007	2008	2009	2010	2011	2012	2013	2014	2015	2016	2017	2018	2019	2020	2021	2022	2023	2024	2025	2026	2027	2028	2029	2030	2031
SCOTLAND	5,116,900	5,138,465	5,157,069	5,174,616	5,190,398	5,205,613	5,219,854	5,232,776	5,245,376	5,257,865	5,270,249	5,282,416	5,294,260	5,305,634	5,316,383	5,326,398	5,335,554	5,343,806	5,351,125	5,357,462	5,362,774	5,367,035	5,370,234	5,372,376	5,373,478	5,373,569
Council areas																										
Aberdeen City	206,880	207,827	208,257	208,420	208,270	207,972	207,556	206,957	206,320	205,651	204,933	204,179	203,364	202,501	201,581	200,587	199,532	198,417	197,248	196,015	194,730	193,408	192,045	190,642	189,197	187,721
Aberdeenshire	236,260	239,019	241,502	243,830	245,960	248,016	249,946	251,783	253,596	255,388	257,171	258,957	260,739	262,515	264,272	266,009	267,718	269,384	271,007	272,569	274,071	275,511	276,883	278,177	279,394	280,532
Angus	109,320	109,808	110,270	110,685	111,052	111,407	111,701	111,971	112,232	112,475	112,704	112,930	113,145	113,353	113,539	113,712	113,866	114,010	114,133	114,231	114,329	114,395	114,435	114,452	114,434	114,396
Argyll & Bute	91,390	91,236	91,101	91,026	90,964	90,939	90,914	90,900	90,884	90,867	90,852	90,849	90,852	90,869	90,883	90,892	90,897	90,885	90,860	90,821	90,759	90,670	90,556	90,417	90,236	90,020
Clackmannanshire	48,900	49,145	49,348	49,556	49,759	49,967	50,181	50,388	50,589	50,787	50,984	51,175	51,365	51,561	51,750	51,933	52,116	52,282	52,447	52,598	52,739	52,868	52,983	53,083	53,169	53,245
Dumfries & Galloway	148,030	147,854	147,748	147,695	147,685	147,683	147,713	147,712	147,703	147,679	147,658	147,624	147,578	147,509	147,420	147,301	147,156	146,973	146,762	146,506	146,208	145,869	145,488	145,061	144,587	144,061
Dundee City	142,170	142,005	141,747	141,438	141,062	140,710	140,323	139,873	139,421	138,973	138,517	138,067	137,597	137,106	136,587	136,033	135,447	134,832	134,189	133,524	132,836	132,130	131,404	130,663	129,902	129,131
East Ayrshire	119,290	119,171	119,091	119,032	118,925	118,823	118,723	118,613	118,490	118,369	118,236	118,095	117,950	117,790	117,619	117,424	117,201	116,952	116,670	116,359	116,004	115,621	115,204	114,760	114,284	113,780
East Dunbartonshire	105,460	104,989	104,529	104,061	103,545	103,023	102,490	101,947	101,388	100,828	100,260	99,684	99,096	98,482	97,865	97,234	96,570	95,879	95,160	94,418	93,647	92,836	91,997	91,123	90,224	89,297
East Lothian	92,830	93,814	94,689	95,467	96,216	96,934	97,654	98,330	99,016	99,725	100,454	101,212	101,979	102,766	103,571	104,389	105,213	106,049	106,890	107,732	108,566	109,390	110,193	110,975	111,743	112,492
East Renfrewshire	89,290	89,054	88,823	88,596	88,368	88,140	87,912	87,684	87,456	87,228	86,999	86,771	86,543	86,315	86,087	85,859	85,631	85,403	85,175	84,947	84,719	84,491	84,263	84,035	83,807	83,579
Edinburgh, City of	463,510	468,682	473,099	477,323	481,153	484,845	488,344	491,662	494,979	498,288	501,589	504,856	508,065	511,209	514,282	517,266	520,163	522,975	525,709	528,361	530,953	533,479	535,942	538,354	540,711	543,020
Eilean Siar	26,350	26,331	26,313	26,286	26,257	26,234	26,211	26,183	26,147	26,103	26,058	26,014	25,966	25,912	25,860	25,803	25,742	25,676	25,605	25,529	25,448	25,362	25,271	25,176	25,077	24,974
Falkirk	149,680	150,323	151,002	151,699	152,411	153,117	153,801	154,460	155,083	155,683	156,272	156,837	157,386	157,912	158,413	158,900	159,365	159,800	160,200	160,560	160,940	161,277	161,581	161,851	162,100	162,318
Fife	358,930	360,764	362,653	364,554	366,501	368,440	370,390	372,396	374,390	376,398	378,413	380,443	382,468	384,473	386,463	388,407	390,296	392,123	393,904	395,612	397,263	398,831	400,307	401,710	403,032	404,292
Glasgow City	580,690	582,484	583,493	584,308	584,685	584,950	585,072	584,987	584,915	584,852	584,789	584,674	584,506	584,248	583,885	583,412	582,825	582,113	581,290	580,369	579,351	578,249	577,082	575,858	574,572	573,227
Highland	215,310	216,980	218,473	219,872	221,218	222,495	223,698	224,795	225,849	226,872	227,868	228,841	229,784	230,709	231,594	232,444	233,247	234,016	234,729	235,401	236,036	236,608	237,121	237,573	237,977	238,319
Inverclyde	81,540	81,027	80,532	80,042	79,613	79,188	78,773	78,349	77,924	77,499	77,071	76,639	76,202	75,748	75,282	74,805	74,294	73,777	73,235	72,674	72,093	71,493	70,882	70,252	69,605	68,941
Midlothian	79,290	79,438	79,507	79,540	79,538	79,432	79,306	79,180	79,043	78,909	78,782	78,643	78,517	78,381	78,239	78,093	77,934	77,764	77,585	77,385	77,169	76,944	76,691	76,421	76,129	75,813
Moray	86,750	87,133	87,360	87,546	87,629	87,647	87,658	87,607	87,534	87,474	87,420	87,355	87,293	87,223	87,153	87,070	86,972	86,864	86,738	86,589	86,413	86,202	85,968	85,700	85,398	85,060
North Ayrshire	135,490	135,194	135,072	134,959	134,958	134,950	134,985	135,008	135,015	135,019	135,008	134,975	134,932	134,872	134,780	134,661	134,517	134,338	134,125	133,880	133,592	133,269	132,908	132,509	132,083	131,622
North Lanarkshire	323,780	324,463	325,199	325,973	326,805	327,635	328,449	329,203	329,913	330,600	331,263	331,903	332,500	333,072	333,613	334,111	334,584	335,021	335,423	335,791	336,126	336,428	336,697	336,933	337,136	337,307
Orkney Islands	19,770	19,958	20,139	20,266	20,403	20,539	20,679	20,811	20,938	21,067	21,193	21,318	21,442	21,564	21,679	21,790	21,906	22,011	22,111	22,214	22,305	22,403	22,488	22,560	22,624	22,686
Perth & Kinross	140,190	141,846	143,286	144,656	145,959	147,223	148,453	149,653	150,848	152,072	153,314	154,569	155,835	157,104	158,376	159,631	160,876	162,111	163,327	164,514	165,686	166,819	167,928	169,004	170,049	171,062
Renfrewshire	169,590	169,255	168,926	168,612	168,261	167,883	167,494	167,041	166,576	166,103	165,628	165,148	164,647	164,125	163,576	163,010	162,408	161,785	161,131	160,447	159,719	158,965	158,174	157,347	156,508	155,636
Scottish Borders	110,240	110,792	111,426	112,066	112,726	113,443	114,155	114,865	115,568	116,263	116,950	117,628	118,298	118,950	119,584	120,200	120,798	121,378	121,940	122,484	123,000	123,488	123,948	124,380	124,784	125,160
Shetland Islands	21,880	21,786	21,729	21,674	21,614	21,559	21,507	21,456	21,405	21,354	21,303	21,252	21,201	21,150	21,100	21,049	20,998	20,947	20,896	20,845	20,794	20,743	20,692	20,641	20,590	20,539
South Ayrshire	111,670	111,625	111,601	111,588	111,589	111,608	111,627	111,644	111,655	111,676	111,688	111,704	111,717	111,726	111,722	111,710	111,677	111,623	111,553	111,460	111,330	111,179	110,998	110,787	110,558	110,293
South Lanarkshire	307,670	309,083	310,465	311,906	313,322	314,743	316,113	317,451	318,774	320,070	321,381	322,669	323,929	325,150	326,351	327,503	328,613	329,675	330,697	331,665	332,585	333,438	334,227	334,957	335,628	336,237
Stirling	87,810	88,671	89,362	89,961	90,474	90,950	91,369	91,745	92,123	92,511	92,901	93,296	93,698	94,103	94,500	94,891	95,273	95,645	95,985	96,322	96,641	96,943	97,225	97,487	97,724	97,954
West Dunbartonshire	91,240	91,099	90,885	90,693	90,461	90,260	90,007	89,763	89,519	89,270	89,015	88,758	88,487	88,215	87,912	87,607	87,273	86,922	86,526	86,118	85,699	85,244	84,766	84,278	83,764	83,211
West Lothian	165,700	167,609	169,342	171,046	172,607	174,178	175,690	177,131	178,573	180,000	181,449	182,897	184,366	185,838	187,312	188,747	190,193	191,612	193,023	194,412	195,764	197,096	198,406	199,672	200,905	202,114
NHS board areas																										
Ayrshire & Arran	366,450	365,990	365,764	365,579	365,472	365,381	365,335	365,265	365,160	36																

Table 2 Projected population (2006-based) by sex and broad age group, council and NHS board areas, selected years

Age group	2006			2011			2016			2021			2026			2031		
	Persons	Males	Females	Persons	Males	Females	Persons	Males	Females	Persons	Males	Females	Persons	Males	Females	Persons	Males	Females
SCOTLAND																		
All Ages	5116.9	2469.4	2647.5	5205.6	2520.5	2685.1	5270.2	2557.1	2713.1	5326.4	2587.0	2739.4	5362.8	2604.8	2758.0	5373.6	2608.7	2764.9
0-15	921.8	471.7	450.1	897.4	459.2	438.1	895.7	457.2	438.5	905.3	461.8	443.4	887.0	452.5	434.5	858.2	437.7	420.4
16-29	912.3	462.6	449.7	955.3	486.5	468.8	922.5	473.6	448.9	864.3	443.7	420.6	842.2	432.3	409.9	847.9	434.4	413.5
30-49	1485.0	717.0	768.0	1421.2	687.5	733.7	1359.3	661.6	697.7	1326.8	653.8	673.0	1341.8	668.0	673.8	1334.7	667.6	667.2
50-64	959.8	469.1	490.6	1033.1	501.2	531.9	1078.9	517.1	561.9	1118.1	529.9	588.2	1057.5	497.9	559.6	972.1	461.0	511.1
65-74	455.7	208.4	247.4	481.7	224.7	257.0	549.8	259.9	290.0	585.8	277.0	308.7	612.4	286.9	325.5	668.7	308.5	360.2
75+	382.2	140.6	241.7	417.0	161.3	255.6	464.0	187.8	276.2	526.2	220.7	305.5	622.0	267.2	354.8	692.0	299.5	392.5
<i>Council areas</i>																		
Aberdeen City																		
All Ages	206.9	101.8	105.0	208.0	102.7	105.3	204.9	101.5	103.5	200.6	99.5	101.1	194.7	96.6	98.2	187.7	93.0	94.7
0-15	32.7	16.9	15.8	32.4	16.7	15.7	32.3	16.5	15.8	31.3	16.0	15.3	28.1	14.4	13.8	24.6	12.6	12.1
16-29	45.4	22.9	22.5	42.2	20.6	21.6	36.4	18.1	18.2	33.1	16.8	16.3	32.5	16.4	16.2	32.8	16.3	16.4
30-49	60.2	30.4	29.8	59.8	31.0	28.7	57.7	29.9	27.7	53.4	27.5	25.9	48.7	25.1	23.6	42.0	21.3	20.7
50-64	36.3	18.3	18.0	40.3	20.2	20.1	41.2	20.4	20.8	41.6	20.5	21.1	39.5	19.7	19.8	38.3	20.0	18.3
65-74	16.9	7.7	9.2	16.8	7.8	9.0	19.9	9.5	10.4	22.3	10.9	11.4	23.3	11.2	12.1	24.5	11.5	12.9
75+	15.3	5.6	9.8	16.5	6.3	10.2	17.6	7.0	10.5	18.9	7.9	11.1	22.6	9.8	12.8	25.5	11.3	14.2
Aberdeenshire																		
All Ages	236.3	117.0	119.3	248.0	122.9	125.1	257.2	127.4	129.7	266.0	131.7	134.3	274.1	135.5	138.6	280.5	138.4	142.1
0-15	46.3	23.8	22.5	45.1	23.3	21.9	44.6	22.8	21.8	45.4	23.2	22.2	45.8	23.4	22.5	46.3	23.6	22.7
16-29	33.3	17.5	15.8	38.5	20.1	18.3	40.6	21.3	19.3	38.9	20.4	18.6	37.8	19.9	17.9	37.5	19.6	18.0
30-49	70.9	34.6	36.3	66.7	32.4	34.4	61.6	30.1	31.6	59.9	29.5	30.3	62.0	31.1	30.9	65.1	32.9	32.1
50-64	49.3	24.9	24.4	54.7	27.4	27.3	57.5	28.4	29.1	60.0	29.4	30.6	57.3	27.6	29.8	51.4	24.6	26.7
65-74	20.0	9.7	10.2	23.7	11.8	12.0	30.0	14.9	15.1	33.8	16.5	17.2	35.2	17.0	18.1	37.9	18.3	19.6
75+	16.5	6.5	10.0	19.2	8.0	11.2	22.8	10.0	12.8	28.1	12.7	15.4	35.9	16.6	19.3	42.3	19.4	22.9
Angus																		
All Ages	109.3	52.8	56.5	111.4	54.1	57.4	112.7	54.8	57.9	113.7	55.4	58.3	114.3	55.7	58.7	114.4	55.7	58.7
0-15	20.1	10.3	9.8	19.7	10.1	9.7	19.4	9.9	9.6	19.1	9.7	9.4	18.5	9.4	9.1	18.2	9.2	8.9
16-29	15.1	7.8	7.2	16.2	8.6	7.6	16.3	8.7	7.6	15.8	8.4	7.4	15.5	8.2	7.2	15.3	8.1	7.1
30-49	30.3	14.5	15.8	28.3	13.5	14.7	25.7	12.4	13.3	24.3	12.0	12.3	24.0	12.0	12.0	24.3	12.3	12.0
50-64	23.0	11.3	11.8	24.3	11.8	12.6	24.8	11.9	12.9	25.4	12.0	13.4	24.3	11.5	12.9	21.7	10.2	11.5
65-74	11.1	5.2	5.9	12.2	5.8	6.4	14.4	6.8	7.5	15.0	7.2	7.9	15.0	7.1	8.0	16.3	7.6	8.7
75+	9.6	3.7	5.9	10.7	4.3	6.4	12.1	5.1	7.0	14.1	6.1	8.0	17.0	7.5	9.5	18.7	8.3	10.4
Argyll & Bute																		
All Ages	91.4	45.5	45.9	90.9	45.5	45.4	90.9	45.6	45.2	90.9	45.8	45.1	90.8	45.8	45.0	90.0	45.4	44.6
0-15	15.7	8.0	7.7	14.1	7.1	7.0	13.1	6.7	6.5	13.2	6.7	6.5	13.4	6.8	6.6	13.4	6.8	6.6
16-29	12.7	7.4	5.3	14.3	8.1	6.2	14.8	8.2	6.6	13.6	7.5	6.0	12.1	6.8	5.3	11.3	6.4	4.9
30-49	25.0	12.6	12.4	22.2	11.3	10.9	19.9	10.5	9.4	19.1	10.3	8.8	19.8	10.8	9.0	20.6	11.2	9.5
50-64	19.8	9.7	10.0	20.4	10.0	10.4	20.3	10.0	10.4	20.5	9.9	10.6	18.8	9.0	9.8	16.1	7.9	8.2
65-74	10.0	4.7	5.3	10.9	5.3	5.6	12.3	5.9	6.4	12.5	6.0	6.5	12.4	6.1	6.4	13.2	6.3	6.9
75+	8.2	3.1	5.0	9.0	3.6	5.4	10.4	4.4	6.0	12.1	5.3	6.7	14.3	6.3	8.0	15.5	6.9	8.6
Clackmannanshire																		
All Ages	48.9	23.7	25.2	50.0	24.3	25.7	51.0	24.8	26.2	51.9	25.2	26.8	52.7	25.5	27.3	53.2	25.6	27.6
0-15	9.5	4.8	4.7	9.2	4.7	4.5	9.1	4.7	4.4	9.2	4.7	4.5	9.1	4.6	4.5	9.1	4.6	4.5
16-29	7.9	4.0	3.9	8.3	4.3	4.1	8.5	4.3	4.2	8.0	4.1	4.0	7.8	4.0	3.8	7.8	4.0	3.8
30-49	14.4	7.0	7.4	13.8	6.6	7.2	13.0	6.2	6.7	12.5	6.0	6.5	12.8	6.1	6.7	12.9	6.2	6.7
50-64	9.8	4.7	5.0	10.3	5.0	5.3	10.6	5.1	5.5	11.2	5.4	5.8	10.9	5.2	5.7	10.1	4.7	5.4
65-74	4.2	2.0	2.2	4.9	2.3	2.6	5.8	2.8	3.0	6.0	2.8	3.2	6.1	2.9	3.2	6.7	3.2	3.5
75+	3.2	1.2	2.0	3.5	1.4	2.0	4.0	1.7	2.3	4.9	2.2	2.7	6.1	2.7	3.4	6.7	3.0	3.7
Dumfries & Galloway																		
All Ages	148.0	71.6	76.5	147.7	71.6	76.1	147.7	71.7	76.0	147.3	71.5	75.8	146.2	70.8	75.4	144.1	69.6	74.4
0-15	25.7	13.1	12.6	23.9	12.3	11.7	23.1	11.8	11.3	23.1	11.8	11.3	22.3	11.4	10.9	21.3	10.8	10.4
16-29	19.5	10.0	9.5	20.7	10.7	10.0	20.4	10.7	9.7	18.2	9.6	8.6	16.7	8.8	7.9	16.4	8.6	7.7
30-49	39.9	19.1	20.8	35.6	16.9	18.7	31.1	14.7	16.5	29.1	13.8	15.2	29.2	14.1	15.1	29.0	14.1	14.9
50-64	32.4	16.0	16.5	33.7	16.5	17.3	34.6	16.6	18.0	35.0	16.6	18.4	32.2	15.2	17.0	27.5	12.8	14.7
65-74	16.7	8.0	8.8	18.3	8.8	9.5	20.7	10.2	10.6	21.4	10.5	10.9	21.5	10.3	11.2	23.2	11.0	12.2
75+	13.8	5.4	8.4	15.4	6.4	9.0	17.7	7.7	10.0	20.6	9.2	11.4	24.3	11.1	13.2	26.7	12.2	14.5

Table 2 continued

Age group	2006			2011			2016			2021			2026			2031		
	Persons	Males	Females	Persons	Males	Females	Persons	Males	Females	Persons	Males	Females	Persons	Males	Females	Persons	Males	Females
Dundee City																		
All Ages	142.2	67.5	74.7	140.7	67.0	73.7	138.5	66.1	72.4	136.0	65.0	71.1	132.8	63.4	69.4	129.1	61.5	67.6
0-15	23.8	12.2	11.6	23.6	12.2	11.4	23.9	12.3	11.5	23.8	12.3	11.6	22.4	11.5	10.9	20.3	10.5	9.9
16-29	31.3	15.6	15.7	30.2	14.9	15.2	26.8	13.3	13.5	24.5	12.3	12.1	24.2	12.2	12.0	24.8	12.5	12.3
30-49	36.9	17.2	19.7	35.2	16.7	18.6	34.3	16.5	17.8	33.4	16.3	17.1	32.8	16.3	16.5	30.1	14.9	15.3
50-64	24.6	12.0	12.6	26.0	12.3	13.7	26.3	12.1	14.2	26.0	11.5	14.5	23.0	10.0	13.0	21.5	9.7	11.8
65-74	13.3	6.0	7.4	12.9	6.1	6.8	13.8	6.5	7.3	14.1	6.6	7.6	14.6	6.6	8.0	15.6	6.8	8.9
75+	12.3	4.5	7.7	12.9	4.9	8.0	13.5	5.4	8.1	14.2	6.0	8.2	15.8	6.8	9.0	16.7	7.2	9.5
East Ayrshire																		
All Ages	119.3	57.5	61.8	118.8	57.5	61.3	118.2	57.4	60.8	117.4	57.1	60.3	116.0	56.4	59.6	113.8	55.4	58.4
0-15	22.0	11.2	10.8	20.7	10.6	10.1	20.4	10.5	10.0	20.3	10.4	9.8	19.4	10.0	9.4	18.3	9.4	8.9
16-29	19.1	9.7	9.5	20.2	10.3	9.9	19.2	10.0	9.2	17.1	9.0	8.2	16.2	8.5	7.7	16.1	8.5	7.6
30-49	34.7	16.7	18.0	31.8	15.3	16.6	29.0	13.9	15.1	27.2	13.2	14.0	26.7	13.1	13.7	26.3	13.0	13.3
50-64	23.4	11.4	12.0	24.6	11.9	12.7	25.2	12.0	13.2	26.5	12.5	14.0	24.8	11.8	13.1	21.5	10.2	11.4
65-74	11.3	5.2	6.1	12.0	5.6	6.4	13.7	6.5	7.2	14.1	6.7	7.4	14.2	6.6	7.6	15.7	7.2	8.4
75+	8.7	3.3	5.4	9.5	3.8	5.7	10.7	4.5	6.2	12.3	5.3	7.0	14.6	6.5	8.1	15.9	7.1	8.8
East Dunbartonshire																		
All Ages	105.5	50.9	54.6	103.0	49.9	53.1	100.3	48.9	51.4	97.2	47.7	49.6	93.6	46.1	47.5	89.3	44.2	45.1
0-15	20.0	10.4	9.6	17.9	9.2	8.6	16.5	8.5	8.0	16.0	8.2	7.8	15.3	7.8	7.4	14.2	7.3	6.9
16-29	16.6	8.9	7.7	17.6	9.5	8.0	16.7	9.3	7.5	14.6	8.1	6.5	12.7	7.1	5.6	11.6	6.5	5.1
30-49	29.1	13.5	15.6	24.8	11.7	13.1	21.8	10.5	11.2	20.6	10.4	10.1	21.3	11.3	10.0	21.1	11.3	9.8
50-64	21.3	10.2	11.1	22.7	10.8	11.9	22.8	10.7	12.1	21.6	10.0	11.7	17.5	7.8	9.6	13.8	6.4	7.4
65-74	10.3	4.7	5.6	10.7	4.9	5.8	11.8	5.5	6.3	12.3	5.7	6.5	12.8	5.9	6.9	13.3	6.0	7.3
75+	8.2	3.1	5.1	9.4	3.8	5.6	10.7	4.5	6.3	12.1	5.2	6.9	14.0	6.1	8.0	15.4	6.7	8.6
East Lothian																		
All Ages	92.8	44.6	48.3	96.9	46.7	50.3	100.5	48.4	52.0	104.4	50.3	54.1	108.6	52.3	56.3	112.5	54.2	58.3
0-15	18.5	9.4	9.1	18.2	9.2	9.0	18.0	9.2	8.9	19.0	9.7	9.4	20.2	10.2	9.9	21.3	10.8	10.5
16-29	12.2	6.3	5.9	15.5	7.9	7.6	17.4	8.8	8.5	17.2	8.6	8.6	16.7	8.4	8.4	16.7	8.4	8.3
30-49	27.6	13.1	14.5	25.6	12.2	13.4	23.6	11.2	12.4	23.2	11.2	12.0	25.0	12.2	12.8	27.6	13.4	14.2
50-64	18.0	8.8	9.2	19.8	9.5	10.2	21.2	10.2	11.0	22.7	10.8	11.9	21.5	10.1	11.3	18.8	8.8	9.9
65-74	8.7	4.0	4.7	9.5	4.5	5.0	10.9	5.1	5.8	11.6	5.4	6.2	12.4	5.8	6.6	13.9	6.5	7.4
75+	7.7	2.9	4.8	8.4	3.4	5.1	9.4	3.9	5.5	10.8	4.7	6.1	12.7	5.5	7.2	14.2	6.2	8.0
East Renfrewshire																		
All Ages	89.3	42.5	46.8	88.8	42.5	46.2	88.9	42.9	46.1	89.3	43.3	46.0	89.5	43.6	45.9	89.2	43.6	45.6
0-15	18.2	9.4	8.9	17.0	8.8	8.2	16.4	8.4	8.0	16.6	8.5	8.1	17.1	8.8	8.3	17.2	8.8	8.4
16-29	13.5	7.0	6.4	15.1	7.9	7.2	15.6	8.3	7.4	14.7	7.7	7.0	13.6	7.1	6.4	13.0	6.8	6.2
30-49	25.2	11.7	13.5	21.6	10.0	11.6	19.1	9.0	10.0	18.6	9.3	9.3	20.2	10.3	9.9	21.5	11.1	10.4
50-64	17.1	8.2	8.9	18.8	9.1	9.7	19.6	9.4	10.2	19.2	9.0	10.2	16.1	7.4	8.7	12.9	6.1	6.8
65-74	8.2	3.7	4.5	8.4	3.8	4.6	9.3	4.3	5.1	10.2	4.7	5.4	11.1	5.2	5.8	11.9	5.5	6.4
75+	7.1	2.5	4.5	8.0	3.0	5.0	8.9	3.5	5.4	9.9	4.0	5.9	11.4	4.7	6.7	12.7	5.3	7.4
Edinburgh, City of																		
All Ages	463.5	223.0	240.5	484.8	234.0	250.8	501.6	242.5	259.0	517.3	250.3	267.0	531.0	256.7	274.2	543.0	262.2	280.8
0-15	70.4	36.4	33.9	71.9	37.0	34.9	75.7	38.8	36.9	79.2	40.3	38.9	77.7	39.5	38.2	74.0	37.6	36.4
16-29	113.2	55.1	58.1	114.4	55.5	59.0	105.5	51.9	53.6	100.9	49.8	51.1	101.7	50.1	51.6	106.1	52.1	54.0
30-49	138.2	68.1	70.1	147.7	73.2	74.5	158.0	77.7	80.3	162.4	79.5	83.0	165.7	81.0	84.7	160.3	78.2	82.2
50-64	73.4	35.8	37.5	81.2	39.6	41.6	85.4	41.4	44.0	91.6	44.1	47.4	93.3	45.1	48.2	99.5	48.5	50.9
65-74	34.3	15.3	18.9	34.1	15.5	18.6	40.0	18.5	21.5	43.6	20.6	23.0	46.1	21.8	24.4	51.5	23.8	27.7
75+	34.1	12.2	21.9	35.5	13.3	22.3	37.0	14.4	22.7	39.6	15.9	23.7	46.6	19.3	27.2	51.7	22.0	29.7
Eilean Siar																		
All Ages	26.4	13.0	13.4	26.2	12.9	13.4	26.1	12.7	13.3	25.8	12.6	13.2	25.4	12.3	13.2	24.9	11.9	13.0
0-15	4.7	2.3	2.3	4.5	2.2	2.3	4.3	2.1	2.2	4.1	2.1	2.1	3.8	1.9	1.9	3.5	1.7	1.8
16-29	3.4	1.8	1.6	3.3	1.9	1.4	3.2	1.9	1.3	2.9	1.7	1.2	2.8	1.6	1.1	2.7	1.6	1.1
30-49	7.2	3.6	3.6	6.8	3.3	3.5	6.2	2.9	3.2	5.7	2.7	3.0	5.3	2.6	2.7	5.0	2.5	2.5
50-64	5.6	2.9	2.7	5.9	3.0	2.9	6.0	2.9	3.1	6.2	2.9	3.3	6.0	2.7	3.3	5.6	2.4	3.1
65-74	2.9	1.4	1.5	3.0	1.5	1.6	3.4	1.7	1.7	3.7	1.8	1.9	3.7	1.8	1.9	3.9	1.8	2.1
75+	2.5	0.9	1.6	2.7	1.0	1.7	2.9	1.1	1.8	3.2	1.3	1.9	3.8	1.6	2.2	4.2	1.8	2.4

Table 2 continued

Age group	2006			2011			2016			2021			2026			2031		
	Persons	Males	Females	Persons	Males	Females	Persons	Males	Females	Persons	Males	Females	Persons	Males	Females	Persons	Males	Females
Falkirk																		
All Ages	149.7	72.3	77.4	153.1	74.2	78.9	156.3	75.8	80.4	158.9	77.1	81.8	160.9	78.0	82.9	162.3	78.6	83.7
0-15	28.3	14.5	13.8	27.9	14.3	13.6	28.0	14.2	13.8	27.7	14.0	13.7	26.6	13.4	13.1	25.7	13.0	12.7
16-29	24.5	12.3	12.1	24.9	12.8	12.1	24.8	13.1	11.7	23.9	12.6	11.4	24.1	12.6	11.5	24.2	12.6	11.6
30-49	45.3	22.0	23.3	44.9	21.6	23.3	42.7	20.5	22.3	41.1	20.1	21.1	40.6	20.1	20.5	40.2	20.2	20.0
50-64	28.0	13.6	14.4	29.9	14.4	15.5	31.4	15.1	16.4	34.2	16.3	18.0	34.4	16.1	18.3	32.8	15.3	17.5
65-74	13.3	6.1	7.1	14.2	6.6	7.6	16.3	7.6	8.6	17.0	7.9	9.1	17.4	8.1	9.3	19.8	9.2	10.6
75+	10.4	3.9	6.5	11.3	4.5	6.8	13.0	5.4	7.6	14.9	6.3	8.6	17.9	7.7	10.2	19.6	8.4	11.2
Fife																		
All Ages	358.9	173.1	185.9	368.4	178.3	190.2	378.4	183.3	195.1	388.4	188.2	200.2	397.3	192.4	204.9	404.3	195.5	208.8
0-15	65.5	33.4	32.1	64.2	32.9	31.3	65.4	33.4	32.0	67.6	34.6	33.0	68.1	34.9	33.2	67.6	34.7	32.9
16-29	62.3	31.4	31.0	67.6	34.5	33.0	67.3	34.4	32.8	63.8	32.7	31.1	62.8	32.2	30.6	64.3	33.0	31.3
30-49	101.7	49.4	52.3	96.9	46.7	50.3	93.8	45.5	48.4	94.0	45.8	48.2	98.0	48.0	49.9	100.8	49.8	51.0
50-64	69.6	33.8	35.8	73.5	35.6	37.9	75.7	36.3	39.4	79.2	37.7	41.5	75.5	35.6	39.9	69.6	32.6	36.9
65-74	32.1	14.9	17.2	35.8	16.9	18.9	42.0	19.8	22.2	43.7	20.6	23.2	44.7	21.1	23.6	48.6	22.6	26.0
75+	27.7	10.1	17.6	30.4	11.7	18.7	34.2	13.8	20.3	40.1	16.8	23.3	48.2	20.5	27.7	53.5	22.8	30.6
Glasgow City																		
All Ages	580.7	278.6	302.1	585.0	281.6	303.3	584.8	282.6	302.2	583.4	282.7	300.7	579.4	281.1	298.2	573.2	278.3	294.9
0-15	97.3	49.7	47.6	96.5	49.2	47.3	98.7	50.1	48.6	99.5	50.5	49.0	93.9	47.6	46.3	86.0	43.6	42.5
16-29	136.7	68.5	68.2	134.1	66.5	67.6	118.7	59.1	59.7	108.4	53.5	54.9	107.2	52.8	54.4	110.3	54.3	56.1
30-49	174.3	84.9	89.4	176.4	87.2	89.2	178.8	89.7	89.1	177.7	90.6	87.1	174.5	89.4	85.1	163.3	83.7	79.6
50-64	87.9	43.2	44.7	97.9	47.2	50.6	107.0	50.4	56.7	111.5	51.8	59.7	108.0	50.7	57.3	106.5	51.6	54.9
65-74	45.1	19.2	25.9	41.0	18.3	22.7	42.6	19.7	22.9	47.3	22.0	25.4	53.7	24.2	29.5	60.2	26.3	33.9
75+	39.4	13.2	26.2	39.0	13.2	25.9	38.9	13.7	25.2	39.0	14.4	24.6	42.0	16.4	25.6	46.8	18.8	28.0
Highland																		
All Ages	215.3	105.3	110.0	222.5	108.8	113.7	227.9	111.2	116.6	232.4	113.2	119.3	236.0	114.5	121.5	238.3	115.2	123.1
0-15	39.4	20.2	19.2	38.6	19.9	18.7	38.2	19.6	18.7	38.1	19.5	18.6	37.3	19.0	18.2	36.4	18.6	17.8
16-29	30.4	16.1	14.2	32.0	17.2	14.8	32.2	17.4	14.8	30.6	16.5	14.1	29.9	16.2	13.7	29.7	15.9	13.8
30-49	61.1	29.5	31.6	58.5	28.1	30.5	54.4	26.1	28.3	52.6	25.6	27.0	52.8	25.8	27.0	52.8	26.2	26.6
50-64	46.4	23.1	23.3	50.1	24.6	25.5	52.2	25.3	26.9	53.5	25.4	28.1	51.5	24.2	27.3	47.8	22.3	25.5
65-74	20.8	9.7	11.1	23.6	11.3	12.3	27.9	13.6	14.3	30.2	14.6	15.6	31.4	14.9	16.4	33.7	15.8	17.9
75+	17.3	6.6	10.7	19.8	7.8	12.0	23.0	9.4	13.6	27.3	11.6	15.7	33.2	14.4	18.8	37.9	16.5	21.4
Inverclyde																		
All Ages	81.5	38.9	42.6	79.2	37.9	41.3	77.1	37.0	40.1	74.8	36.0	38.8	72.1	34.7	37.4	68.9	33.3	35.7
0-15	14.7	7.6	7.1	13.7	7.1	6.6	13.1	6.8	6.3	12.7	6.6	6.1	11.8	6.2	5.6	10.7	5.6	5.1
16-29	14.0	7.2	6.8	13.9	7.3	6.7	12.8	6.8	6.0	11.3	6.1	5.2	10.4	5.7	4.7	10.0	5.6	4.5
30-49	23.1	11.0	12.2	20.5	9.7	10.8	18.2	8.7	9.5	17.1	8.4	8.6	16.7	8.5	8.2	16.0	8.3	7.7
50-64	15.6	7.6	8.0	16.4	7.9	8.6	16.9	7.9	9.0	16.7	7.5	9.1	14.5	6.4	8.1	12.0	5.3	6.7
65-74	7.6	3.4	4.2	7.8	3.5	4.3	8.7	4.0	4.7	8.9	4.1	4.8	9.3	4.2	5.1	10.1	4.4	5.7
75+	6.5	2.2	4.3	6.8	2.4	4.4	7.4	2.7	4.6	8.1	3.1	5.0	9.3	3.7	5.6	10.1	4.1	6.0
Midlothian																		
All Ages	79.3	37.6	41.7	79.4	37.8	41.6	78.8	37.6	41.2	78.1	37.3	40.8	77.2	36.8	40.3	75.8	36.2	39.7
0-15	15.6	7.9	7.7	14.8	7.5	7.3	14.2	7.3	6.9	14.2	7.3	6.9	14.0	7.2	6.8	13.7	7.1	6.6
16-29	12.2	6.0	6.1	13.9	7.1	6.8	14.1	7.3	6.9	13.0	6.7	6.3	12.2	6.3	5.9	11.7	6.2	5.5
30-49	23.0	10.6	12.4	20.5	9.3	11.2	18.2	8.3	9.9	17.1	8.0	9.2	17.5	8.3	9.2	18.3	8.8	9.5
50-64	15.9	7.6	8.2	16.5	7.8	8.7	16.6	7.6	8.9	16.8	7.6	9.2	14.9	6.6	8.3	12.1	5.3	6.9
65-74	7.1	3.3	3.8	7.6	3.6	4.0	8.8	4.1	4.6	8.9	4.2	4.7	8.9	4.1	4.8	9.6	4.2	5.3
75+	5.5	2.1	3.4	6.2	2.5	3.7	7.0	2.9	4.1	8.1	3.5	4.6	9.6	4.2	5.4	10.4	4.6	5.8
Moray																		
All Ages	86.8	43.7	43.0	87.6	44.2	43.4	87.4	44.2	43.3	87.1	44.0	43.1	86.4	43.7	42.8	85.1	43.0	42.1
0-15	16.0	8.3	7.7	14.5	7.4	7.1	13.4	6.7	6.7	13.4	6.7	6.7	13.2	6.5	6.6	12.8	6.4	6.4
16-29	12.9	7.2	5.7	14.7	8.1	6.6	15.3	8.5	6.8	13.6	7.5	6.1	12.0	6.7	5.3	11.1	6.1	5.0
30-49	25.4	13.1	12.3	23.1	12.1	11.0	20.1	10.7	9.4	18.7	10.2	8.5	19.0	10.4	8.5	19.4	10.7	8.8
50-64	17.2	8.5	8.8	18.4	9.1	9.3	19.0	9.4	9.6	19.8	9.8	10.0	18.4	9.1	9.4	15.5	7.8	7.8
65-74	8.5	4.0	4.5	9.2	4.4	4.8	10.6	5.0	5.6	11.3	5.3	5.9	11.4	5.5	5.9	12.4	5.9	6.5
75+	6.8	2.7	4.1	7.8	3.2	4.6	8.9	3.8	5.1	10.4	4.6	5.8	12.4	5.5	6.9	13.8	6.2	7.7

Table 2 continued

Age group	2006			2011			2016			2021			2026			2031		
	Persons	Males	Females	Persons	Males	Females	Persons	Males	Females	Persons	Males	Females	Persons	Males	Females	Persons	Males	Females
North Ayrshire																		
All Ages	135.5	64.1	71.4	135.0	64.1	70.8	135.0	64.3	70.7	134.7	64.2	70.5	133.6	63.7	69.9	131.6	62.8	68.9
0-15	25.3	12.9	12.4	23.8	12.0	11.7	23.5	11.9	11.6	23.4	11.8	11.6	22.4	11.3	11.1	21.2	10.7	10.5
16-29	21.5	10.7	10.8	22.6	11.7	10.9	21.7	11.5	10.3	19.6	10.4	9.3	18.6	9.8	8.8	18.7	9.8	8.8
30-49	37.7	17.5	20.2	34.3	15.7	18.6	31.2	14.3	16.9	29.8	14.1	15.8	30.0	14.6	15.5	29.8	14.7	15.0
50-64	27.3	13.1	14.2	28.4	13.5	14.9	28.9	13.5	15.4	29.4	13.6	15.8	27.0	12.3	14.7	23.4	10.6	12.8
65-74	13.3	6.2	7.2	14.4	6.7	7.7	16.4	7.6	8.8	17.0	7.9	9.1	17.1	7.8	9.3	18.3	8.2	10.1
75+	10.3	3.7	6.6	11.4	4.5	7.0	13.3	5.4	7.8	15.4	6.5	8.9	18.4	7.8	10.6	20.2	8.6	11.6
North Lanarkshire																		
All Ages	323.8	155.5	168.3	327.6	157.9	169.8	331.3	160.0	171.3	334.1	161.5	172.5	335.6	162.4	173.2	335.8	162.6	173.2
0-15	63.6	32.6	31.0	62.7	32.0	30.6	62.3	31.8	30.5	62.2	31.7	30.5	60.5	30.9	29.7	58.7	29.9	28.8
16-29	57.4	28.9	28.5	59.0	30.0	29.0	57.4	29.3	28.1	55.0	28.1	26.9	54.5	27.8	26.7	54.7	27.9	26.8
30-49	97.3	46.5	50.7	92.2	44.3	47.9	87.4	42.3	45.1	83.2	40.8	42.5	82.8	41.1	41.7	83.1	41.5	41.6
50-64	58.4	28.0	30.3	62.7	29.9	32.8	66.9	31.7	35.2	70.5	33.3	37.2	67.6	31.9	35.7	61.2	29.0	32.1
65-74	27.4	12.3	15.1	28.8	13.1	15.7	31.7	14.7	17.0	33.9	15.7	18.2	36.2	16.5	19.6	40.2	18.3	21.8
75+	19.8	7.2	12.6	22.3	8.6	13.7	25.6	10.2	15.4	29.2	11.9	17.3	34.0	14.2	19.8	38.0	15.9	22.1
Orkney Islands																		
All Ages	19.8	9.7	10.1	20.5	10.1	10.5	21.2	10.4	10.8	21.8	10.6	11.2	22.3	10.8	11.5	22.7	10.9	11.8
0-15	3.6	1.8	1.8	3.4	1.8	1.7	3.4	1.7	1.7	3.5	1.7	1.7	3.4	1.7	1.7	3.4	1.7	1.7
16-29	2.7	1.4	1.3	2.9	1.5	1.4	2.8	1.5	1.4	2.5	1.2	1.3	2.4	1.2	1.2	2.4	1.2	1.3
30-49	5.6	2.8	2.8	5.4	2.7	2.8	5.1	2.4	2.7	4.9	2.3	2.6	5.0	2.3	2.7	4.9	2.3	2.7
50-64	4.3	2.2	2.2	4.6	2.3	2.3	5.0	2.5	2.5	5.3	2.7	2.6	5.2	2.6	2.6	4.9	2.4	2.5
65-74	2.0	1.0	1.0	2.4	1.1	1.2	2.8	1.4	1.4	2.9	1.5	1.5	3.1	1.5	1.6	3.4	1.7	1.7
75+	1.6	0.6	1.0	1.8	0.7	1.0	2.1	0.9	1.2	2.6	1.1	1.4	3.2	1.4	1.7	3.6	1.7	2.0
Perth & Kinross																		
All Ages	140.2	68.0	72.2	147.2	71.6	75.6	153.3	74.7	78.7	159.6	77.8	81.9	165.7	80.7	85.0	171.1	83.2	87.9
0-15	25.1	12.8	12.2	24.9	12.7	12.2	25.4	12.9	12.5	26.7	13.5	13.2	27.9	14.1	13.7	28.6	14.5	14.1
16-29	20.6	10.9	9.7	24.4	12.8	11.6	25.2	13.2	12.0	24.5	12.8	11.7	24.1	12.6	11.5	24.5	12.7	11.7
30-49	38.3	18.4	19.9	36.7	17.6	19.1	35.5	17.0	18.6	36.4	17.7	18.7	39.1	19.2	19.9	41.9	20.6	21.3
50-64	29.2	14.2	15.0	31.1	15.1	16.0	32.4	15.6	16.7	33.3	15.9	17.4	31.7	14.9	16.8	28.8	13.4	15.3
65-74	14.2	6.7	7.5	15.9	7.6	8.3	18.7	9.0	9.7	19.8	9.4	10.3	20.1	9.5	10.5	21.8	10.4	11.4
75+	12.8	4.9	7.9	14.2	5.9	8.4	16.2	7.0	9.2	19.0	8.4	10.6	22.8	10.3	12.5	25.6	11.5	14.0
Renfrewshire																		
All Ages	169.6	80.9	88.6	167.9	80.4	87.5	165.6	79.5	86.1	163.0	78.4	84.6	159.7	77.0	82.7	155.6	75.1	80.5
0-15	31.1	15.9	15.3	30.0	15.3	14.7	29.5	15.1	14.4	29.1	15.0	14.1	27.8	14.4	13.4	26.2	13.6	12.6
16-29	28.9	14.6	14.3	29.7	15.2	14.5	28.2	14.6	13.6	25.9	13.4	12.5	25.0	13.0	12.0	24.7	12.9	11.8
30-49	50.2	23.8	26.4	45.7	21.6	24.1	41.2	19.6	21.6	38.5	18.8	19.7	38.5	19.2	19.3	37.7	19.1	18.6
50-64	32.1	15.4	16.7	33.8	16.1	17.7	35.1	16.5	18.6	35.8	16.5	19.3	31.7	14.4	17.3	26.8	12.1	14.7
65-74	15.3	6.8	8.5	15.7	7.1	8.7	17.3	7.9	9.4	17.7	8.1	9.6	18.4	8.3	10.1	20.5	9.1	11.4
75+	12.0	4.5	7.5	12.9	5.1	7.8	14.3	5.8	8.5	15.9	6.6	9.3	18.4	7.7	10.6	19.8	8.3	11.4
Scottish Borders																		
All Ages	110.2	53.4	56.9	113.4	55.1	58.3	117.1	56.8	60.3	120.8	58.4	62.4	124.4	60.0	64.4	127.4	61.2	66.2
0-15	20.1	10.2	9.9	19.8	10.1	9.7	19.9	10.2	9.7	20.5	10.5	10.0	21.0	10.7	10.2	21.4	10.9	10.5
16-29	14.1	7.2	6.9	15.9	8.2	7.8	17.0	8.8	8.3	16.8	8.6	8.2	16.5	8.6	8.0	16.9	8.7	8.1
30-49	31.4	15.2	16.2	29.1	14.0	15.1	26.7	12.6	14.1	25.8	12.1	13.7	26.9	12.7	14.2	28.2	13.3	14.9
50-64	23.3	11.5	11.8	25.3	12.3	13.0	26.4	12.8	13.6	27.9	13.3	14.5	26.5	12.5	14.0	23.8	11.0	12.8
65-74	11.5	5.4	6.1	12.8	6.1	6.7	15.0	7.2	7.8	15.8	7.6	8.2	16.5	7.9	8.7	18.1	8.5	9.6
75+	9.8	3.9	5.9	10.6	4.4	6.1	12.0	5.2	6.8	14.1	6.3	7.8	17.0	7.7	9.3	18.9	8.6	10.3
Shetland Islands																		
All Ages	21.9	11.0	10.9	21.6	10.9	10.7	21.4	10.8	10.6	21.0	10.6	10.4	20.5	10.3	10.1	19.8	10.0	9.8
0-15	4.4	2.2	2.2	4.1	2.1	2.0	3.9	2.0	1.9	3.7	1.9	1.8	3.4	1.7	1.6	3.0	1.6	1.5
16-29	3.3	1.7	1.6	3.1	1.7	1.4	2.9	1.6	1.3	2.6	1.5	1.1	2.5	1.4	1.1	2.3	1.3	1.0
30-49	6.3	3.1	3.1	5.9	2.9	3.0	5.1	2.6	2.6	4.7	2.4	2.3	4.2	2.2	2.0	3.8	2.0	1.8
50-64	4.5	2.4	2.1	4.6	2.4	2.2	4.7	2.4	2.4	4.8	2.3	2.4	4.6	2.3	2.4	4.2	2.0	2.2
65-74	1.8	0.9	0.9	2.2	1.1	1.1	2.7	1.4	1.3	2.8	1.4	1.4	2.7	1.3	1.4	3.0	1.4	1.6
75+	1.6	0.6	1.0	1.7	0.7	1.0	2.0	0.9	1.1	2.5	1.1	1.4	3.1	1.5	1.6	3.5	1.7	1.8

Table 2 continued

Age group	2006			2011			2016			2021			2026			2031		
	Persons	Males	Females	Persons	Males	Females	Persons	Males	Females	Persons	Males	Females	Persons	Males	Females	Persons	Males	Females
South Ayrshire																		
All Ages	111.7	53.3	58.4	111.6	53.5	58.1	111.7	53.7	58.0	111.7	53.8	57.9	111.3	53.7	57.6	110.3	53.2	57.1
0-15	18.8	9.6	9.2	17.9	9.2	8.7	17.5	9.0	8.5	17.7	9.1	8.5	17.4	9.0	8.4	16.9	8.7	8.2
16-29	16.5	8.3	8.2	17.6	9.0	8.6	17.4	8.9	8.4	16.0	8.3	7.7	15.1	7.9	7.1	14.8	7.8	7.0
30-49	30.3	14.5	15.8	27.1	12.9	14.2	24.7	11.9	12.8	23.9	11.6	12.3	24.3	11.8	12.5	24.7	12.2	12.5
50-64	23.6	11.4	12.2	24.6	11.8	12.7	24.8	11.8	13.0	24.5	11.5	13.0	22.2	10.4	11.8	19.1	9.0	10.2
65-74	12.0	5.6	6.4	12.8	6.0	6.8	14.4	6.8	7.6	14.9	7.1	7.8	15.2	7.1	8.1	15.9	7.3	8.6
75+	10.5	3.9	6.6	11.6	4.6	7.0	12.9	5.3	7.6	14.8	6.3	8.5	17.2	7.5	9.8	18.9	8.2	10.7
South Lanarkshire																		
All Ages	307.7	147.1	160.6	314.7	151.2	163.6	321.4	154.9	166.4	327.5	158.3	169.2	332.6	161.1	171.5	336.2	163.1	173.2
0-15	57.7	29.3	28.4	56.2	28.6	27.6	56.1	28.6	27.5	57.0	29.1	27.9	56.5	28.9	27.6	55.7	28.5	27.2
16-29	51.5	26.3	25.3	55.1	28.4	26.8	54.5	28.1	26.4	52.1	26.6	25.5	50.9	26.1	24.9	51.3	26.3	25.0
30-49	91.0	43.2	47.7	86.3	41.0	45.3	83.0	40.1	42.9	81.5	40.0	41.5	83.9	41.8	42.1	85.4	42.8	42.6
50-64	58.3	28.1	30.3	63.7	30.7	33.0	67.4	32.1	35.4	69.7	33.0	36.6	65.8	30.9	34.8	60.5	28.7	31.8
65-74	27.5	12.4	15.1	28.9	13.2	15.7	32.3	15.0	17.3	35.3	16.5	18.8	38.1	17.7	20.4	41.2	18.9	22.3
75+	21.7	7.9	13.9	24.6	9.4	15.2	28.1	11.1	16.9	31.9	13.0	18.9	37.3	15.6	21.6	42.1	17.8	24.3
Stirling																		
All Ages	87.8	41.9	45.9	91.0	43.6	47.4	92.9	44.7	48.2	94.9	45.7	49.2	96.6	46.6	50.1	98.0	47.2	50.7
0-15	16.7	8.5	8.1	16.5	8.5	8.0	16.4	8.5	7.9	16.9	8.7	8.2	17.2	8.8	8.3	17.2	8.8	8.3
16-29	15.9	7.8	8.1	18.4	9.2	9.1	19.0	9.6	9.4	18.0	9.2	8.7	17.6	9.1	8.5	17.5	9.1	8.4
30-49	24.3	11.4	12.9	22.8	10.4	12.4	21.4	9.8	11.6	21.5	10.1	11.5	22.9	10.9	12.0	24.4	11.9	12.5
50-64	16.7	8.1	8.5	17.5	8.6	8.9	18.1	8.8	9.3	19.0	9.0	10.0	17.6	8.0	9.6	15.4	6.8	8.6
65-74	7.9	3.7	4.2	8.5	4.0	4.5	9.7	4.6	5.1	10.0	4.8	5.2	10.0	4.8	5.2	11.2	5.3	5.9
75+	6.4	2.3	4.1	7.3	2.8	4.5	8.3	3.3	4.9	9.5	4.0	5.6	11.3	4.8	6.5	12.3	5.3	7.0
West Dunbartonshire																		
All Ages	91.2	43.2	48.0	90.3	43.0	47.3	89.0	42.6	46.4	87.6	42.1	45.5	85.7	41.2	44.5	83.2	40.1	43.1
0-15	16.6	8.6	8.1	15.5	7.9	7.6	15.1	7.7	7.4	15.1	7.7	7.4	14.3	7.3	7.0	13.1	6.7	6.4
16-29	16.5	8.2	8.3	17.4	8.9	8.5	15.9	8.3	7.6	13.9	7.3	6.6	12.9	6.7	6.2	12.7	6.6	6.1
30-49	26.3	12.4	13.9	23.9	11.2	12.7	22.5	10.7	11.8	21.5	10.5	11.1	21.7	10.9	10.9	21.3	10.8	10.4
50-64	17.2	8.3	8.9	18.4	8.8	9.6	19.2	9.0	10.2	19.3	8.9	10.3	17.1	7.8	9.3	14.7	6.8	7.9
65-74	7.9	3.5	4.5	8.1	3.7	4.4	9.1	4.2	4.9	9.7	4.5	5.2	10.4	4.8	5.6	11.1	5.0	6.1
75+	6.7	2.2	4.5	7.0	2.5	4.5	7.3	2.7	4.6	8.1	3.2	4.9	9.3	3.8	5.5	10.4	4.3	6.1
West Lothian																		
All Ages	165.7	80.4	85.3	174.2	84.7	89.5	181.4	88.3	93.1	188.7	91.9	96.8	195.8	95.4	100.4	202.1	98.5	103.6
0-15	34.5	17.5	17.0	34.5	17.5	17.0	34.8	17.7	17.1	36.1	18.4	17.7	37.2	18.9	18.3	38.2	19.5	18.8
16-29	27.4	13.8	13.6	31.6	16.0	15.7	33.8	17.0	16.8	33.5	16.8	16.7	33.3	16.7	16.7	33.8	16.9	16.9
30-49	52.9	25.4	27.5	50.9	24.5	26.4	48.3	23.4	24.9	47.3	23.1	24.2	49.7	24.7	25.0	52.8	26.2	26.7
50-64	30.1	14.7	15.4	33.0	16.1	16.9	35.7	17.3	18.4	39.3	18.9	20.4	38.2	18.2	20.0	34.7	16.7	18.0
65-74	12.5	5.9	6.7	14.5	6.8	7.7	16.8	7.9	8.9	17.9	8.5	9.4	19.3	9.2	10.2	22.2	10.4	11.8
75+	8.3	3.1	5.1	9.7	3.9	5.8	11.9	5.0	6.9	14.7	6.2	8.4	18.0	7.8	10.2	20.3	8.8	11.5
NHS board areas																		
Ayrshire & Arran																		
All Ages	366.5	175.0	191.5	365.4	175.2	190.2	364.9	175.4	189.5	363.8	175.1	188.7	360.9	173.8	187.1	355.7	171.3	184.4
0-15	66.2	33.7	32.4	62.3	31.9	30.5	61.5	31.4	30.1	61.3	31.4	30.0	59.3	30.3	29.0	56.4	28.9	27.6
16-29	57.2	28.7	28.4	60.5	31.0	29.5	58.3	30.4	27.9	52.7	27.6	25.1	49.9	26.2	23.6	49.6	26.1	23.5
30-49	102.7	48.7	54.0	93.2	43.9	49.3	84.9	40.1	44.8	80.9	38.8	42.1	81.1	39.4	41.6	80.8	40.0	40.8
50-64	74.3	36.0	38.3	77.5	37.2	40.3	78.9	37.3	41.6	80.4	37.6	42.8	74.0	34.5	39.5	64.1	29.8	34.4
65-74	36.6	16.9	19.7	39.3	18.3	20.9	44.5	20.9	23.6	46.0	21.6	24.3	46.5	21.5	24.9	49.8	22.8	27.1
75+	29.5	10.9	18.6	32.5	12.8	19.7	36.8	15.3	21.6	42.5	18.1	24.4	50.3	21.8	28.4	55.0	23.9	31.0

Table 2 continued

Age group	2006			2011			2016			2021			2026			2031		
	Persons	Males	Females	Persons	Males	Females	Persons	Males	Females	Persons	Males	Females	Persons	Males	Females	Persons	Males	Females
Borders - see Scottish Borders council area																		
Dumfries & Galloway - see Dumfries & Galloway council area																		
Fife																		
All Ages	358.9	173.0	185.8	368.4	178.3	190.1	378.3	183.3	195.0	388.3	188.2	200.1	397.2	192.3	204.9	404.2	195.5	208.7
0-15	65.5	33.4	32.1	64.1	32.8	31.3	65.4	33.4	32.0	67.6	34.6	33.0	68.1	34.9	33.2	67.6	34.7	32.9
16-29	62.3	31.4	31.0	67.5	34.5	33.0	67.3	34.4	32.8	63.8	32.7	31.1	62.8	32.2	30.6	64.3	33.0	31.3
30-49	101.7	49.4	52.3	96.9	46.6	50.3	93.8	45.5	48.4	94.0	45.8	48.2	97.9	48.0	49.9	100.8	49.8	51.0
50-64	69.6	33.8	35.7	73.5	35.6	37.9	75.7	36.3	39.3	79.2	37.7	41.5	75.5	35.6	39.9	69.5	32.6	36.9
65-74	32.1	14.9	17.2	35.8	16.9	18.9	42.0	19.8	22.2	43.7	20.6	23.2	44.7	21.1	23.6	48.6	22.6	26.0
75+	27.7	10.1	17.6	30.4	11.7	18.7	34.2	13.8	20.3	40.1	16.8	23.3	48.2	20.5	27.7	53.5	22.8	30.6
Forth Valley																		
All Ages	286.1	137.8	148.3	293.7	141.9	151.8	299.8	145.1	154.7	305.4	147.8	157.6	310.0	149.9	160.1	313.2	151.3	161.9
0-15	54.4	27.8	26.6	53.5	27.5	26.1	53.5	27.3	26.1	53.7	27.3	26.4	52.8	26.9	26.0	51.9	26.4	25.5
16-29	48.2	24.1	24.1	51.5	26.3	25.3	52.3	27.0	25.3	49.9	25.8	24.1	49.4	25.6	23.8	49.6	25.6	23.9
30-49	83.9	40.4	43.5	81.4	38.6	42.8	77.0	36.5	40.5	75.1	36.1	39.0	76.1	37.1	39.1	77.3	38.3	39.1
50-64	54.4	26.4	28.0	57.6	28.0	29.7	60.1	28.9	31.2	64.4	30.6	33.8	62.8	29.3	33.6	58.2	26.8	31.4
65-74	25.3	11.8	13.6	27.5	12.9	14.7	31.7	15.0	16.7	33.0	15.5	17.5	33.5	15.8	17.7	37.6	17.6	20.0
75+	19.9	7.4	12.5	22.0	8.7	13.3	25.3	10.4	14.9	29.3	12.4	16.9	35.3	15.2	20.0	38.6	16.7	22.0
Grampian																		
All Ages	529.9	262.5	267.3	543.6	269.8	273.8	549.5	273.1	276.4	553.7	275.2	278.5	555.2	275.7	279.5	553.3	274.4	278.9
0-15	94.9	49.0	46.0	92.0	47.4	44.7	90.3	46.0	44.4	90.0	45.8	44.2	87.1	44.3	42.9	83.7	42.5	41.2
16-29	91.6	47.6	44.0	95.4	48.9	46.5	92.2	47.8	44.4	85.5	44.6	40.9	82.3	42.9	39.4	81.4	42.0	39.4
30-49	156.5	78.1	78.3	149.6	75.5	74.1	139.4	70.7	68.7	131.9	67.2	64.7	129.7	66.7	63.1	126.5	64.9	61.6
50-64	102.9	51.7	51.2	113.4	56.7	56.8	117.7	58.2	59.5	121.4	59.6	61.8	115.2	56.3	58.9	105.2	52.4	52.8
65-74	45.4	21.4	23.9	49.7	23.9	25.8	60.5	29.5	31.1	67.3	32.7	34.6	69.9	33.7	36.2	74.8	35.7	39.0
75+	38.6	14.7	23.9	43.5	17.5	26.0	49.3	20.9	28.4	57.4	25.2	32.3	70.9	31.8	39.1	81.7	36.9	44.8
Greater Glasgow & Clyde																		
All Ages	1191.6	569.7	621.8	1189.5	570.9	618.6	1183.0	570.1	612.8	1174.4	567.8	606.6	1160.8	562.4	598.3	1141.8	554.1	587.8
0-15	211.9	108.4	103.5	204.3	104.5	99.9	203.2	103.6	99.6	203.2	103.7	99.5	194.3	99.3	95.0	181.3	92.6	88.7
16-29	238.8	120.7	118.1	241.0	121.9	119.1	221.2	112.9	108.3	201.9	102.6	99.3	194.7	98.9	95.8	195.7	99.3	96.4
30-49	350.2	167.5	182.7	334.5	161.4	173.1	322.8	158.4	164.5	315.1	158.2	157.0	314.7	160.2	154.6	302.8	155.0	147.9
50-64	205.1	99.6	105.5	223.2	107.2	116.0	236.6	111.4	125.2	240.7	111.5	129.2	220.8	101.9	118.8	202.1	95.6	106.5
65-74	100.6	43.9	56.7	98.1	44.1	54.0	106.0	48.9	57.0	114.2	52.9	61.3	124.4	56.6	67.8	136.4	60.4	75.9
75+	84.9	29.5	55.4	88.5	31.9	56.6	93.2	35.0	58.2	99.4	38.9	60.4	111.9	45.5	66.4	123.6	51.1	72.5
Highland																		
All Ages	306.7	150.8	155.9	313.4	154.3	159.1	318.7	156.9	161.8	323.3	158.9	164.4	326.8	160.3	166.5	328.3	160.7	167.7
0-15	55.1	28.2	26.9	52.7	27.0	25.7	51.3	26.2	25.1	51.3	26.2	25.1	50.7	25.9	24.8	49.8	25.4	24.4
16-29	43.0	23.5	19.5	46.3	25.3	21.0	47.0	25.6	21.4	44.2	24.0	20.2	41.9	22.9	19.0	41.0	22.3	18.7
30-49	86.2	42.1	44.0	80.7	39.4	41.3	74.2	36.6	37.7	71.7	35.9	35.8	72.6	36.7	36.0	73.4	37.3	36.1
50-64	66.2	32.9	33.3	70.5	34.6	35.9	72.5	35.2	37.3	74.0	35.3	38.7	70.2	33.2	37.1	63.8	30.2	33.7
65-74	30.8	14.4	16.4	34.5	16.6	17.9	40.3	19.5	20.8	42.8	20.6	22.2	43.8	21.0	22.8	46.9	22.1	24.8
75+	25.4	9.7	15.7	28.8	11.4	17.3	33.3	13.8	19.6	39.4	16.9	22.5	47.5	20.7	26.9	53.3	23.3	30.0
Lanarkshire																		
All Ages	558.1	268.2	290.0	567.4	273.6	293.8	575.8	278.4	297.4	583.0	282.4	300.6	587.9	285.1	302.8	590.2	286.5	303.7
0-15	107.4	54.9	52.5	105.1	53.7	51.4	104.5	53.4	51.1	105.1	53.7	51.4	103.0	52.7	50.4	100.5	51.4	49.1
16-29	96.2	48.8	47.4	100.8	51.8	49.1	98.7	50.8	47.9	94.0	48.3	45.8	92.4	47.3	45.0	92.7	47.5	45.2
30-49	166.4	79.6	86.8	157.2	75.4	81.8	149.3	72.4	76.9	143.9	70.8	73.1	145.2	72.5	72.7	146.7	73.7	73.0
50-64	103.0	49.5	53.5	111.4	53.4	58.0	118.5	56.4	62.1	123.8	58.7	65.1	117.5	55.5	62.0	106.4	50.5	55.8
65-74	48.7	22.0	26.7	51.3	23.4	27.9	56.9	26.4	30.5	61.3	28.4	32.8	65.7	30.3	35.4	72.2	33.2	39.0
75+	36.5	13.4	23.1	41.6	16.0	25.6	48.0	19.1	28.9	54.9	22.4	32.4	64.0	26.8	37.3	71.8	30.2	41.6

Table 2 continued

Age group	2006			2011			2016			2021			2026			2031		
	Persons	Males	Females	Persons	Males	Females	Persons	Males	Females	Persons	Males	Females	Persons	Males	Females	Persons	Males	Females
Lothian																		
All Ages	801.3	385.5	415.8	835.4	403.2	432.1	862.3	416.9	445.4	888.5	429.8	458.7	912.4	441.2	471.2	933.4	451.0	482.4
0-15	139.0	71.3	67.7	139.3	71.2	68.1	142.6	72.8	69.8	148.4	75.6	72.8	149.0	75.8	73.2	147.2	74.9	72.3
16-29	165.1	81.3	83.8	175.5	86.5	89.0	170.9	85.1	85.9	164.6	82.0	82.6	164.1	81.5	82.6	168.4	83.7	84.7
30-49	241.6	117.1	124.5	244.6	119.1	125.5	248.0	120.5	127.5	249.9	121.7	128.3	257.9	126.2	131.7	259.0	126.6	132.5
50-64	137.3	66.9	70.4	150.4	73.0	77.4	158.8	76.5	82.3	170.3	81.5	88.9	167.8	80.0	87.8	165.0	79.3	85.8
65-74	62.7	28.5	34.1	65.7	30.4	35.3	76.5	35.7	40.8	82.1	38.8	43.3	86.8	40.9	45.9	97.1	44.9	52.2
75+	55.7	20.4	35.3	59.8	23.0	36.9	65.3	26.2	39.1	73.1	30.3	42.8	86.9	36.8	50.1	96.6	41.6	55.0
Orkney - see Orkney Islands council area																		
Shetland - see Shetland Islands council area																		
Tayside																		
All Ages	391.6	188.3	203.4	399.3	192.7	206.6	404.5	195.6	208.9	409.3	198.1	211.2	412.8	199.8	213.0	414.5	200.5	214.1
0-15	69.0	35.3	33.7	68.2	34.9	33.3	68.7	35.1	33.6	69.6	35.5	34.1	68.8	35.1	33.7	67.1	34.2	32.9
16-29	67.0	34.3	32.7	70.7	36.4	34.4	68.2	35.2	33.0	64.7	33.5	31.2	63.7	33.0	30.7	64.5	33.4	31.2
30-49	105.5	50.1	55.4	100.2	47.8	52.4	95.5	45.8	49.7	94.1	46.1	48.1	96.0	47.5	48.4	96.3	47.8	48.5
50-64	76.8	37.5	39.3	81.4	39.2	42.3	83.4	39.6	43.8	84.7	39.4	45.3	79.0	36.4	42.6	71.9	33.3	38.6
65-74	38.6	17.8	20.8	41.0	19.4	21.6	46.9	22.4	24.5	48.9	23.2	25.8	49.7	23.2	26.5	53.7	24.7	29.0
75+	34.7	13.2	21.6	37.7	15.1	22.7	41.8	17.5	24.3	47.2	20.5	26.7	55.6	24.6	31.0	61.0	27.0	34.0
Western Isles - see Eilean Siar council area																		

Table 3 Projected percentage change in population (2006-based), by broad age group, council and NHS board areas, selected years

Area	All ages					Children (0-15)					Working Ages ¹					Pensionable Ages ¹					75+				
	2011	2016	2021	2026	2031	2011	2016	2021	2026	2031	2011	2016	2021	2026	2031	2011	2016	2021	2026	2031	2011	2016	2021	2026	2031
SCOTLAND	2	3	4	5	5	-3	-3	-2	-4	-7	1	3	3	3	0	7	9	13	18	31	9	21	38	63	81
Council areas																									
Aberdeen City	1	-1	-3	-6	-9	-1	-1	-4	-14	-25	0	-3	-7	-10	-16	4	6	11	16	28	7	14	23	47	66
Aberdeenshire	5	9	13	16	19	-3	-4	-2	-1	0	4	7	8	10	8	17	29	43	55	76	16	38	70	117	156
Angus	2	3	4	5	5	-2	-3	-5	-8	-10	0	1	1	1	-3	10	15	20	25	37	11	26	46	76	94
Argyll & Bute	0	-1	-1	-1	-1	-10	-16	-16	-15	-15	-1	-1	-2	-4	-9	9	12	15	19	28	10	27	48	76	90
Clackmannanshire	2	4	6	8	9	-3	-4	-2	-3	-4	1	3	4	5	3	12	17	23	28	42	9	27	53	91	111
Dumfries & Galloway	0	0	0	-1	-3	-7	-10	-10	-13	-17	-2	-3	-5	-7	-13	9	13	17	21	32	12	28	49	76	93
Dundee City	-1	-3	-4	-7	-9	-1	0	0	-6	-15	-2	-4	-6	-8	-12	1	-2	-3	-2	5	5	10	15	29	36
East Ayrshire	0	-1	-2	-3	-5	-6	-7	-8	-12	-17	-1	-2	-4	-6	-11	7	9	11	15	26	9	23	41	68	82
East Dunbartonshire	-2	-5	-8	-11	-15	-11	-17	-20	-24	-29	-3	-6	-11	-17	-25	7	9	12	17	26	15	31	48	72	88
East Lothian	4	8	12	17	21	-2	-3	3	9	15	5	11	14	17	17	8	11	16	23	39	9	21	39	65	84
East Renfrewshire	-1	0	0	0	0	-7	-10	-9	-6	-6	-1	0	-1	-4	-9	7	8	13	19	32	13	26	40	62	80
Edinburgh, City of	5	8	12	15	17	2	8	13	10	5	6	10	13	16	18	3	3	6	11	24	4	9	16	36	51
Eilean Siar	0	-1	-2	-4	-6	-3	-7	-11	-19	-26	-2	-3	-5	-6	-12	6	8	11	14	24	6	16	29	52	67
Falkirk	2	4	6	8	8	-1	-1	-2	-6	-9	2	4	6	8	6	8	11	15	19	34	9	25	44	73	89
Fife	3	5	8	11	13	-2	0	3	4	3	2	4	6	8	8	10	14	19	24	37	10	23	45	74	93
Glasgow City	1	1	0	0	-1	-1	1	2	-4	-12	3	3	3	3	0	-5	-11	-11	-8	3	-1	-1	-1	7	19
Highland	3	6	8	10	11	-2	-3	-3	-5	-8	2	4	4	5	2	13	20	28	36	51	15	33	58	93	120
Inverclyde	-3	-5	-8	-12	-15	-7	-11	-13	-20	-28	-4	-6	-11	-15	-22	3	3	3	6	16	6	14	26	44	56
Midlothian	0	-1	-2	-3	-4	-5	-9	-9	-10	-12	-1	-1	-4	-6	-11	8	11	13	16	26	12	26	46	74	88
Moray	1	1	0	0	-2	-9	-16	-16	-18	-20	1	1	-2	-4	-10	10	15	21	26	39	15	32	53	83	104
North Ayrshire	0	0	-1	-1	-3	-6	-7	-8	-11	-16	-2	-3	-4	-6	-10	9	12	16	20	31	11	29	50	79	96
North Lanarkshire	1	2	3	4	4	-1	-2	-2	-5	-8	1	2	2	2	0	7	8	13	18	31	13	29	48	72	92
Orkney Islands	4	7	10	13	15	-4	-5	-3	-4	-5	3	6	7	9	6	12	21	29	38	56	9	32	61	97	126
Perth & Kinross	5	9	14	18	22	-1	1	6	11	14	5	9	13	16	17	11	16	23	29	42	11	26	48	78	99
Renfrewshire	-1	-2	-4	-6	-8	-4	-5	-6	-11	-16	-2	-3	-6	-8	-14	4	4	4	7	18	7	19	32	53	65
Scottish Borders	3	6	10	13	16	-2	-1	2	4	6	2	5	8	10	9	10	14	20	27	41	8	23	44	74	94
Shetland Islands	-1	-2	-4	-6	-10	-7	-11	-15	-24	-31	-4	-7	-11	-13	-21	13	22	30	35	51	10	28	58	94	121
South Ayrshire	0	0	0	0	-1	-5	-7	-6	-8	-10	-1	-2	-3	-5	-9	7	9	13	17	26	10	22	41	64	80
South Lanarkshire	2	4	6	8	9	-3	-3	-1	-2	-3	2	5	6	7	5	7	10	16	23	36	13	29	47	72	94
Stirling	4	6	8	10	12	-1	-1	1	3	3	3	6	8	9	8	9	13	16	20	32	14	30	49	77	93
West Dunbartonshire	-1	-2	-4	-6	-9	-7	-9	-9	-14	-21	0	-1	-5	-8	-13	2	1	3	7	18	4	9	20	39	55
West Lothian	5	10	14	18	22	0	1	5	8	11	5	10	13	17	17	13	21	29	38	58	18	45	78	118	146
NHS board areas																									
Ayrshire & Arran	0	0	-1	-2	-3	-6	-7	-7	-10	-15	-1	-2	-4	-5	-10	7	10	14	17	28	10	25	44	70	86
Borders	3	6	10	13	16	-2	-1	2	4	6	2	5	8	10	9	10	14	20	27	41	8	23	44	74	94
Dumfries & Galloway	0	0	0	-1	-3	-7	-10	-10	-13	-17	-2	-3	-5	-7	-13	9	13	17	21	32	12	28	49	76	93
Fife	3	5	8	11	13	-2	0	3	4	3	2	4	6	8	8	10	14	19	24	37	10	23	45	74	93
Forth Valley	3	5	7	8	9	-2	-2	-1	-3	-5	2	4	6	8	6	9	13	16	21	35	11	27	47	77	94
Grampian	3	4	4	5	4	-3	-5	-5	-8	-12	2	2	1	0	-5	11	18	27	35	51	12	28	49	83	111
Greater Glasgow & Clyde	0	-1	-1	-3	-4	-4	-4	-4	-8	-14	1	1	-1	-2	-6	0	-2	-1	2	14	4	10	17	32	46
Highland	2	4	5	7	7	-4	-7	-7	-8	-10	1	2	2	2	-1	11	17	24	30	44	13	31	55	87	110
Lanarkshire	2	3	4	5	6	-2	-3	-2	-4	-6	1	3	3	4	1	8	10	15	21	35	14	32	50	76	97
Lothian	4	8	11	14	16	0	3	7	7	6	5	9	12	15	15	6	8	12	18	32	8	17	31	56	74
Orkney	4	7	10	13	15	-4	-5	-3	-4	-5	3	6	7	9	6	12	21	29	38	56	9	32	61	97	126
Shetland	-1	-2	-4	-6	-10	-7	-11	-15	-24	-31	-4	-7	-11	-13	-21	13	22	30	35	51	10	28	58	94	121
Tayside	2	3	5	5	6	-1	0	1	0	-3	1	2	3	3	0	7	10	13	17	28	9	20	36	60	76
Western Isles	0	-1	-2	-4	-6	-3	-7	-11	-19	-26	-2	-3	-5	-6	-12	6	8	11	14	24	6	16	29	52	67

¹ Pensionable age is 65 for men, 60 for women until 2010; between 2010 and 2020 pensionable age for women increases to 65. Between 2024 and 2046, state pension age will increase in three stages from 65 years to 68 years for both sexes.

Table 4 Projected births (2006-based), by council and NHS board areas, 2006-2031

Area	2006 -2007	2007 -2008	2008 -2009	2009 -2010	2010 -2011	2011 -2012	2012 -2013	2013 -2014	2014 -2015	2015 -2016	2016 -2017	2017 -2018	2018 -2019	2019 -2020	2020 -2021	2021 -2022	2022 -2023	2023 -2024	2024 -2025	2025 -2026	2026 -2027	2027 -2028	2028 -2029	2029 -2030	2030 -2031
SCOTLAND	56,561	56,848	57,257	57,519	57,551	57,270	56,739	56,277	56,083	55,962	55,813	55,615	55,324	54,961	54,525	54,041	53,563	53,108	52,645	52,183	51,732	51,305	50,912	50,561	50,260
Council areas																									
Aberdeen City	2,211	2,233	2,247	2,250	2,241	2,209	2,165	2,119	2,072	2,021	1,974	1,919	1,865	1,808	1,750	1,695	1,644	1,599	1,554	1,520	1,490	1,467	1,450	1,433	1,421
Aberdeenshire	2,538	2,546	2,559	2,563	2,561	2,545	2,525	2,514	2,525	2,541	2,568	2,597	2,625	2,644	2,664	2,670	2,679	2,682	2,678	2,670	2,661	2,647	2,632	2,619	2,604
Angus	1,134	1,125	1,121	1,113	1,102	1,086	1,064	1,046	1,036	1,034	1,028	1,028	1,023	1,020	1,016	1,018	1,011	1,009	1,005	1,004	1,002	996	993	985	980
Argyll & Bute	806	798	792	787	782	775	769	771	774	785	794	803	817	822	828	830	832	827	822	812	800	787	773	758	740
Clackmannanshire	541	542	544	545	544	539	532	530	528	528	528	528	529	535	532	532	532	532	529	527	526	518	514	510	510
Dumfries & Galloway	1,445	1,432	1,423	1,415	1,405	1,390	1,368	1,354	1,349	1,349	1,343	1,341	1,332	1,322	1,311	1,296	1,282	1,267	1,248	1,232	1,212	1,191	1,169	1,147	1,130
Dundee City	1,622	1,634	1,645	1,655	1,660	1,655	1,636	1,614	1,598	1,577	1,556	1,528	1,498	1,458	1,421	1,386	1,351	1,321	1,295	1,271	1,251	1,232	1,218	1,205	1,196
East Ayrshire	1,296	1,292	1,289	1,285	1,280	1,261	1,245	1,229	1,221	1,214	1,208	1,201	1,192	1,180	1,168	1,150	1,134	1,114	1,096	1,073	1,050	1,036	1,017	1,004	989
East Dunbartonshire	983	970	968	964	959	946	940	926	922	919	917	911	902	890	875	861	845	825	803	784	761	741	719	699	680
East Lothian	1,041	1,049	1,060	1,069	1,076	1,081	1,079	1,091	1,112	1,133	1,162	1,185	1,210	1,233	1,251	1,270	1,284	1,300	1,310	1,316	1,320	1,319	1,318	1,315	1,312
East Renfrewshire	958	945	945	946	946	947	949	945	965	974	986	994	1,001	1,009	1,010	1,014	1,012	1,008	1,000	994	981	973	962	946	942
Edinburgh, City of	4,966	5,103	5,241	5,353	5,430	5,459	5,442	5,411	5,381	5,345	5,297	5,239	5,168	5,094	5,019	4,940	4,881	4,823	4,776	4,741	4,714	4,692	4,684	4,678	4,683
Eilean Siar	250	249	240	239	236	235	225	215	209	202	201	193	190	184	180	177	172	170	167	166	162	158	159	156	154
Falkirk	1,742	1,739	1,742	1,741	1,728	1,705	1,670	1,638	1,615	1,602	1,584	1,569	1,558	1,548	1,538	1,527	1,522	1,517	1,511	1,507	1,503	1,499	1,499	1,495	1,497
Fife	3,945	3,979	4,016	4,051	4,077	4,083	4,076	4,071	4,090	4,113	4,132	4,147	4,151	4,148	4,134	4,117	4,099	4,081	4,059	4,035	4,016	3,990	3,971	3,956	3,945
Glasgow City	7,073	7,187	7,299	7,379	7,409	7,384	7,304	7,214	7,131	7,049	6,941	6,826	6,701	6,562	6,424	6,287	6,161	6,052	5,953	5,865	5,789	5,733	5,684	5,648	5,623
Highland	2,258	2,262	2,274	2,276	2,265	2,245	2,207	2,182	2,165	2,160	2,151	2,146	2,142	2,135	2,126	2,114	2,108	2,096	2,086	2,075	2,062	2,050	2,036	2,026	2,011
Inverclyde	890	885	874	869	863	854	837	826	817	809	797	785	770	755	737	718	702	685	668	648	633	617	603	589	578
Midlothian	913	917	918	915	911	901	892	883	885	891	893	901	902	901	896	894	887	879	874	863	854	845	835	820	808
Moray	906	899	897	893	879	868	859	853	856	859	864	871	873	876	877	877	871	860	854	842	823	807	790	773	753
North Ayrshire	1,479	1,467	1,467	1,458	1,445	1,434	1,414	1,398	1,389	1,378	1,371	1,359	1,348	1,336	1,320	1,296	1,278	1,263	1,246	1,229	1,210	1,191	1,176	1,163	1,147
North Lanarkshire	4,054	4,047	4,052	4,045	4,029	3,989	3,940	3,893	3,872	3,855	3,839	3,826	3,802	3,775	3,747	3,717	3,690	3,665	3,640	3,619	3,601	3,586	3,567	3,559	3,548
Orkney Islands	192	190	195	194	194	196	192	192	190	191	190	192	193	191	190	192	189	187	187	184	184	180	180	178	176
Perth & Kinross	1,377	1,400	1,426	1,446	1,465	1,481	1,492	1,508	1,532	1,554	1,577	1,596	1,615	1,627	1,633	1,640	1,642	1,645	1,642	1,643	1,639	1,638	1,633	1,631	1,628
Renfrewshire	1,934	1,926	1,921	1,915	1,906	1,882	1,857	1,831	1,815	1,803	1,791	1,775	1,758	1,740	1,717	1,694	1,668	1,648	1,624	1,603	1,579	1,558	1,540	1,526	1,509
Scottish Borders	1,117	1,114	1,120	1,120	1,122	1,113	1,109	1,110	1,120	1,132	1,146	1,158	1,170	1,182	1,192	1,199	1,206	1,208	1,215	1,216	1,214	1,214	1,209	1,210	1,207
Shetland Islands	250	244	241	237	232	221	216	206	199	193	192	186	182	178	177	173	167	165	162	158	152	151	148	146	142
South Ayrshire	1,052	1,047	1,053	1,056	1,053	1,046	1,038	1,033	1,038	1,037	1,042	1,039	1,035	1,030	1,024	1,016	1,002	994	983	966	959	944	928	916	901
South Lanarkshire	3,434	3,444	3,473	3,498	3,499	3,492	3,467	3,443	3,437	3,441	3,441	3,442	3,433	3,425	3,418	3,397	3,385	3,371	3,360	3,338	3,324	3,305	3,290	3,276	3,267
Stirling	928	940	952	964	966	970	970	973	979	990	1,000	1,010	1,014	1,019	1,014	1,015	1,010	1,001	999	993	983	973	967	959	956
West Dunbartonshire	1,046	1,049	1,052	1,052	1,055	1,047	1,038	1,029	1,021	1,016	1,008	982	968	951	928	906	889	868	851	834	814	798	785	775	771
West Lothian	2,180	2,194	2,211	2,226	2,231	2,222	2,229	2,240	2,240	2,267	2,292	2,320	2,343	2,366	2,385	2,401	2,411	2,425	2,431	2,438	2,443	2,448	2,446	2,446	2,452
NHS board areas																									
Ayrshire & Arran	3,827	3,806	3,809	3,799	3,778	3,741	3,697	3,660	3,648	3,629	3,621	3,599	3,575	3,546	3,512	3,462	3,414	3,371	3,325	3,268	3,219	3,171	3,121	3,083	3,037
Borders	1,117	1,114	1,120	1,120	1,122	1,113	1,109	1,110	1,120	1,132	1,146	1,158	1,170	1,182	1,192	1,199	1,206	1,208	1,215	1,216	1,214	1,214	1,209	1,210	1,207
Dumfries & Galloway	1,445	1,432	1,423	1,415	1,405	1,390	1,368	1,354	1,349	1,349	1,343	1,341	1,332	1,322	1,311	1,296	1,282	1,267	1,248	1,232	1,212	1,191	1,169	1,147	1,130
Fife	3,945	3,979	4,016	4,051	4,077	4,083	4,076	4,071	4,090	4,113	4,132	4,147	4,151	4,148	4,134	4,117	4,099	4,081	4,059	4,035	4,016	3,990	3,971	3,956	3,945
Forth Valley	3,211	3,221	3,238	3,250	3,238	3,214	3,172	3,141	3,122	3,120	3,112	3,107	3,101	3,102	3,084	3,074	3,064	3,050	3,039	3,027	3,012	2,995	2,984	2,968	2,963
Grampian	5,655	5,678	5,703	5,706	5,681	5,622	5,549	5,486	5,453	5,421	5,406	5,387	5,363	5,328	5,291	5,242	5,194	5,141	5,086	5,032	4,974	4,921	4,872	4,825	4,778
Greater Glasgow & Clyde	13,792	13,873	13,984	14,059	14,075	13,999	13,854	13,693	13,590	13,483	13,355	13,213	13,029	12,835	12,625	12,412	12,202	12,013	11,818	11,646	11,473	11,332	11,200	11,087	11,000
Highland	3,064	3,060	3,066	3,063	3,047	3,020	2,976	2,953	2,939	2,945	2,945	2,949	2,959	2,952	2,954	2,944	2,940	2,923	2,908	2,887	2,862	2,837	2,809	2,784	2,751</

Table 5 Comparison between 2004 and 2006-based population projections, by council and NHS board areas, 2006-2031

Area	2006		2011		2016		2021		2024	
	2004 based	2006 based	2004 based	2006 based	2004 based	2006 based	2004 based	2006 based	2004 based	2006 based
SCOTLAND	5,108,472	5,116,900	5,119,591	5,205,613	5,126,228	5,270,249	5,126,770	5,326,398	5,118,926	5,351,125
Council areas										
Aberdeen City	202,415	206,880	193,937	207,972	184,760	204,933	174,701	200,587	168,184	197,248
Aberdeenshire	235,755	236,260	239,435	248,016	241,514	257,171	242,513	266,009	242,495	271,007
Angus	109,313	109,320	108,403	111,407	106,579	112,704	104,155	113,712	102,393	114,133
Argyll & Bute	92,093	91,390	92,649	90,939	93,414	90,852	94,362	90,892	94,829	90,860
Clackmannanshire	48,867	48,900	48,814	49,967	48,479	50,984	47,969	51,933	47,581	52,447
Dumfries & Galloway	148,832	148,030	148,369	147,683	147,344	147,658	145,937	147,301	144,773	146,762
Dundee City	140,035	142,170	134,953	140,710	130,169	138,517	125,452	136,033	122,418	134,189
East Ayrshire	119,806	119,290	119,048	118,823	118,166	118,236	117,085	117,424	116,209	116,670
East Dunbartonshire	105,748	105,460	103,370	103,023	100,649	100,260	97,487	97,234	95,306	95,160
East Lothian	92,631	92,830	95,136	96,934	97,897	100,454	101,123	104,389	103,153	106,890
East Renfrewshire	89,861	89,290	90,770	88,780	91,564	88,937	92,195	89,258	92,354	89,435
Edinburgh, City of	461,184	463,510	470,287	484,845	480,505	501,589	491,236	517,266	497,274	525,709
Eilean Siar	26,345	26,350	25,522	26,234	24,476	26,058	23,251	25,793	22,431	25,584
Falkirk	149,665	149,680	152,287	153,117	154,675	156,272	156,845	158,904	157,968	160,207
Fife	359,018	358,930	366,422	368,440	374,265	378,413	382,345	388,407	386,849	393,904
Glasgow City	576,675	580,690	568,645	584,950	562,637	584,789	556,794	583,412	552,519	581,290
Highland	214,641	215,310	216,905	222,495	218,227	227,868	218,943	232,444	218,956	234,729
Inverclyde	81,261	81,540	78,592	79,188	75,923	77,071	73,095	74,805	71,191	73,235
Midlothian	79,408	79,290	79,043	79,432	78,665	78,782	78,264	78,093	77,912	77,585
Moray	87,109	86,750	87,005	87,647	86,697	87,420	86,371	87,070	86,079	86,738
North Ayrshire	135,955	135,490	134,719	134,950	133,042	135,008	130,921	134,661	129,301	134,125
North Lanarkshire	324,019	323,780	324,931	327,635	325,256	331,263	324,817	334,071	323,958	335,159
Orkney Islands	19,779	19,770	19,800	20,539	19,628	21,193	19,345	21,790	19,111	22,111
Perth & Kinross	139,614	140,190	141,819	147,223	143,517	153,314	144,981	159,631	145,624	163,327
Renfrewshire	169,804	169,590	166,547	167,883	162,875	165,628	158,796	163,010	156,011	161,131
Scottish Borders	111,159	110,240	114,944	113,443	118,920	117,057	123,180	120,816	125,784	123,007
Shetland Islands	21,976	21,880	21,588	21,599	20,923	21,384	20,073	20,995	19,463	20,699
South Ayrshire	112,202	111,670	111,413	111,608	110,623	111,688	109,773	111,710	109,083	111,553
South Lanarkshire	309,019	307,670	312,475	314,743	315,199	321,381	317,264	327,503	317,959	330,697
Stirling	86,586	87,810	87,622	90,950	88,868	92,901	90,311	94,891	91,145	95,985
West Dunbartonshire	91,318	91,240	89,492	90,260	87,660	89,015	85,518	87,607	83,980	86,526
West Lothian	166,379	165,700	174,649	174,178	183,112	181,449	191,668	188,747	196,633	193,023
NHS board areas										
Ayrshire & Arran	367,963	366,450	365,180	365,381	361,831	364,932	357,779	363,795	354,593	362,348
Borders	111,159	110,247	114,944	113,450	118,920	117,064	123,180	120,823	125,784	123,014
Dumfries & Galloway	148,832	148,030	148,369	147,683	147,344	147,658	145,937	147,301	144,773	146,762
Fife	358,937	358,858	366,341	368,368	374,184	378,341	382,264	388,335	386,768	393,832
Forth Valley	284,812	286,053	288,417	293,697	291,716	299,820	294,819	305,391	296,388	308,302
Grampian	525,279	529,889	520,377	543,634	512,971	549,523	503,585	553,665	496,758	554,992
Greater Glasgow & Clyde	1,188,016	1,191,584	1,171,391	1,189,526	1,155,732	1,182,959	1,138,503	1,174,413	1,125,934	1,166,913
Highland	306,734	306,701	309,554	313,435	311,641	318,721	313,305	323,337	313,785	325,590
Lanarkshire	560,314	558,139	564,056	567,399	566,656	575,848	568,088	582,950	567,969	586,183
Lothian	799,406	801,310	818,919	835,369	839,983	862,254	862,095	888,475	874,776	903,187
Orkney	19,779	19,770	19,800	20,539	19,628	21,193	19,345	21,790	19,111	22,111
Shetland	21,976	21,880	21,588	21,599	20,923	21,384	20,073	20,995	19,463	20,699
Tayside	388,920	391,639	385,133	399,299	380,223	404,494	374,546	409,335	370,393	411,608
Western Isles	26,345	26,350	25,522	26,234	24,476	26,058	23,251	25,793	22,431	25,584

Table 6 Comparison between principal and high migration variant population projections, by Council and NHS board Areas, 2011-2031

Area	2011		2016		2021		2026		2031		% difference between principal and high migration variant projections in 2031	Area
	Principal	High migration	Principal	High migration	Principal	High migration	Principal	High migration	Principal	High migration		
SCOTLAND	5,205,613	5,245,876	5,270,249	5,359,832	5,326,398	5,469,200	5,362,774	5,561,047	5,373,569	5,628,350	5%	SCOTLAND
Council areas												Council areas
Aberdeen City	207,972	211,801	204,933	212,694	200,587	212,551	194,730	211,041	187,721	208,440	11%	Aberdeen City
Aberdeenshire	248,016	250,057	257,171	261,582	266,009	272,918	274,071	283,661	280,532	292,843	4%	Aberdeenshire
Angus	111,407	112,144	112,704	114,316	113,712	116,281	114,329	117,902	114,396	119,000	4%	Angus
Argyll & Bute	90,939	91,453	90,852	92,418	90,892	93,670	90,759	94,834	90,020	95,451	6%	Argyll & Bute
Clackmannanshire	49,967	50,353	50,984	51,679	51,933	52,920	52,739	54,019	53,245	54,817	3%	Clackmannanshire
Dumfries & Galloway	147,683	148,408	147,658	149,977	147,301	151,370	146,208	152,124	144,061	151,890	5%	Dumfries & Galloway
Dundee City	140,710	142,087	138,517	141,374	136,033	140,499	132,836	138,982	129,131	136,953	6%	Dundee City
East Ayrshire	118,823	119,360	118,236	119,382	117,424	119,227	116,004	118,488	113,780	116,945	3%	East Ayrshire
East Dunbartonshire	103,023	103,560	100,260	101,398	97,234	98,996	93,647	96,045	89,297	92,389	3%	East Dunbartonshire
East Lothian	96,934	97,706	100,454	101,800	104,389	106,319	108,566	111,064	112,492	115,547	3%	East Lothian
East Renfrewshire	88,780	88,882	88,937	89,515	89,258	90,455	89,465	91,363	89,223	91,837	3%	East Renfrewshire
Edinburgh, City of	484,845	492,087	501,589	517,788	517,266	543,032	530,953	566,589	543,020	588,685	8%	Edinburgh, City of
Eilean Siar	26,234	26,516	26,058	26,658	25,793	26,708	25,406	26,645	24,892	26,433	6%	Eilean Siar
Falkirk	153,117	153,761	156,272	157,781	158,904	161,368	160,949	164,422	162,318	166,819	3%	Falkirk
Fife	368,440	370,534	378,413	383,632	388,407	396,949	397,263	409,304	404,292	419,894	4%	Fife
Glasgow City	584,950	591,911	574,789	598,497	583,412	604,319	579,351	607,698	573,227	609,061	6%	Glasgow City
Highland	222,495	224,268	227,868	232,208	232,444	239,496	236,036	245,935	238,319	251,091	5%	Highland
Inverclyde	79,188	79,477	77,071	77,667	74,805	75,746	72,093	73,412	68,941	70,642	2%	Inverclyde
Midlothian	79,432	79,897	78,782	79,613	78,093	79,259	77,169	78,687	75,813	77,680	2%	Midlothian
Moray	87,647	88,672	87,420	89,567	87,070	90,486	86,413	91,192	85,060	91,312	7%	Moray
North Ayrshire	134,950	135,212	135,008	136,015	134,661	136,564	133,592	136,410	131,622	135,426	3%	North Ayrshire
North Lanarkshire	327,635	328,319	331,263	333,115	334,071	337,183	335,602	340,013	335,791	341,508	2%	North Lanarkshire
Orkney Islands	20,539	20,594	21,193	21,246	21,790	21,820	22,305	22,255	22,686	22,544	-1%	Orkney Islands
Perth & Kinross	147,223	148,587	153,314	156,125	159,631	163,998	165,686	171,676	171,062	178,709	4%	Perth & Kinross
Renfrewshire	167,883	168,527	165,628	167,110	163,010	165,469	159,719	163,177	155,636	160,143	3%	Renfrewshire
Scottish Borders	113,443	113,857	117,057	118,505	120,816	123,403	124,388	128,141	127,390	132,341	4%	Scottish Borders
Shetland Islands	21,599	21,615	21,384	21,687	20,995	21,623	20,476	21,428	19,783	21,071	7%	Shetland Islands
South Ayrshire	111,608	112,079	111,688	113,006	111,710	113,949	111,330	114,540	110,293	114,503	4%	South Ayrshire
South Lanarkshire	314,743	315,963	321,381	324,306	327,503	332,275	332,585	339,306	336,237	344,953	3%	South Lanarkshire
Stirling	90,950	92,055	92,901	95,202	94,891	98,485	96,641	101,574	97,954	104,243	6%	Stirling
West Dunbartonshire	90,260	90,791	89,015	90,149	87,607	89,436	85,699	88,304	83,221	86,623	4%	West Dunbartonshire
West Lothian	174,178	175,343	181,449	183,820	188,747	192,426	195,764	200,816	202,114	208,557	3%	West Lothian
NHS board areas												NHS board areas
Ayrshire & Arran	365,381	366,651	364,932	368,403	363,795	369,740	360,926	369,438	355,695	366,874	3%	Ayrshire & Arran
Borders	113,450	113,864	117,064	118,512	120,823	123,410	124,395	128,148	127,397	132,348	4%	Borders
Dumfries & Galloway	147,683	148,408	147,658	149,977	147,301	151,370	146,208	152,124	144,061	151,890	5%	Dumfries & Galloway
Fife	368,368	370,462	378,341	383,560	388,335	396,877	397,191	409,232	404,220	419,822	4%	Fife
Forth Valley	293,697	295,832	299,820	304,325	305,391	312,436	309,992	319,678	313,180	325,542	4%	Forth Valley
Grampian	543,634	550,529	549,523	563,842	553,665	575,954	555,213	585,893	553,312	592,594	7%	Grampian
Greater Glasgow & Clyde	1,189,526	1,198,838	1,182,959	1,202,193	1,174,413	1,204,505	1,160,771	1,202,212	1,141,832	1,194,848	5%	Greater Glasgow & Clyde
Highland	313,435	315,722	318,721	324,627	323,337	333,167	326,796	340,770	328,340	346,543	6%	Highland
Lanarkshire	567,399	569,055	575,848	580,027	582,950	589,837	587,853	597,569	590,204	602,771	2%	Lanarkshire
Lothian	835,369	845,013	862,254	883,001	888,475	921,016	912,432	957,136	933,419	990,449	6%	Lothian
Orkney	20,539	20,594	21,193	21,246	21,790	21,820	22,305	22,255	22,686	22,544	-1%	Orkney
Shetland	21,599	21,615	21,384	21,687	20,995	21,623	20,476	21,428	19,783	21,071	7%	Shetland
Tayside	399,299	402,777	404,494	411,774	409,335	420,737	412,810	428,519	414,548	434,621	5%	Tayside
Western Isles	26,234	26,516	26,058	26,658	25,793	26,708	25,406	26,645	24,892	26,433	6%	Western Isles

Corrected: 27 January 2011

Note: This correction only effects the 2016 high migration data for council areas, and the high migration figures for Greater Glasgow & Clyde. All changes are less than one per cent compared with what was previously published

Annex A

Assumed fertility rates by age; mid-year to mid-year periods; Scotland

(rates per 1,000 females)

Age	2006-07	2007-08	2008-09	2009-10	2010-11	2011-12	2012-13	2013-14	2014-15	2015-16	2016-17	2017-18	2018-19	2019-20	2020-21	2021-22	2022-23	2023-24	2024-25	2025-26	2026-27	2027-28	2028-29	2029-30	2030-31
15	3	3	2	2	2	2	2	2	2	2	2	2	2	2	2	2	2	2	2	2	2	2	2	2	2
16	10	9	8	8	8	8	8	8	8	8	8	8	8	8	8	8	8	8	8	8	8	8	8	8	8
17	26	24	23	23	23	23	23	23	23	23	23	23	23	23	23	23	23	23	23	23	23	23	23	23	23
18	39	38	37	37	37	37	37	37	37	37	37	37	37	37	37	37	37	37	37	37	37	37	37	37	37
19	47	46	45	45	45	45	45	45	45	45	45	45	45	45	45	45	45	45	45	45	45	45	45	45	45
20	54	52	52	52	52	52	52	52	52	52	52	52	52	52	52	52	52	52	52	52	52	52	52	52	52
21	56	57	56	56	55	55	55	55	55	55	55	55	55	55	55	55	55	55	55	55	55	55	55	55	55
22	62	62	61	61	61	61	61	61	61	61	61	61	61	61	61	61	61	61	61	61	61	61	61	61	61
23	69	67	67	67	67	67	67	67	67	67	67	67	67	67	67	67	67	67	67	67	67	67	67	67	67
24	72	71	71	71	71	71	71	71	71	71	71	71	71	71	71	71	71	71	71	71	71	71	71	71	71
25	78	77	77	78	78	78	78	78	78	78	78	78	78	78	78	78	78	78	78	78	78	78	78	78	78
26	83	83	83	83	84	84	84	84	84	84	84	84	84	84	84	84	84	84	84	84	84	84	84	84	84
27	90	91	91	91	91	91	91	91	91	91	91	91	91	91	91	91	91	91	91	91	91	91	91	91	91
28	100	99	100	100	100	100	100	100	100	100	100	100	100	100	100	100	100	100	100	100	100	100	100	100	100
29	106	105	105	106	106	106	106	106	106	106	106	106	106	106	106	106	106	106	106	106	106	106	106	106	106
30	108	110	111	112	112	111	110	109	109	109	108	108	108	108	108	108	108	108	108	108	108	108	108	108	108
31	109	111	113	114	114	113	111	110	109	109	108	108	108	108	107	107	107	107	107	107	107	107	107	107	107
32	105	108	110	111	111	110	108	106	105	104	104	104	103	103	103	102	102	102	102	102	102	102	102	102	102
33	97	100	102	104	104	102	100	98	97	96	96	95	95	95	94	94	94	94	94	94	94	94	94	94	94
34	86	89	91	93	93	91	89	87	86	85	85	84	84	84	83	83	83	83	83	83	83	83	83	83	83
35	74	76	79	80	80	79	76	74	73	72	72	72	71	71	71	70	70	70	70	70	70	70	70	70	70
36	62	63	65	66	66	65	63	61	60	60	59	59	59	58	58	58	58	58	58	58	58	58	58	58	58
37	48	50	52	53	53	52	50	49	48	47	47	47	47	46	46	46	46	46	46	46	46	46	46	46	46
38	37	39	40	41	41	40	39	37	37	36	36	36	36	36	35	35	35	35	35	35	35	35	35	35	35
39	27	29	30	31	31	30	29	28	28	27	27	27	27	27	26	26	26	26	26	26	26	26	26	26	26
40	18	20	21	21	21	21	20	19	18	18	18	18	18	18	17	17	17	17	17	17	17	17	17	17	17
41	13	13	13	14	14	13	13	13	13	12	12	12	12	12	12	12	12	12	12	12	12	12	12	12	12
42	7	8	8	8	8	8	8	8	7	7	7	7	7	7	7	7	7	7	7	7	7	7	7	7	7
43	4	4	4	4	4	4	4	4	4	4	4	4	4	4	4	4	4	4	4	4	4	4	4	4	4
44	2	2	2	2	2	2	2	2	2	2	2	2	2	2	2	2	2	2	2	2	2	2	2	2	2
45	1	1	1	1	1	1	1	1	1	1	1	1	1	1	1	1	1	1	1	1	1	1	1	1	1
46	1	1	1	1	1	1	1	1	1	1	1	1	1	1	1	1	1	1	1	1	1	1	1	1	1
Total fertility rate (TFR)	1.70	1.71	1.72	1.73	1.73	1.72	1.70	1.68	1.67	1.67	1.66	1.66	1.66	1.66	1.65	1.65	1.65	1.65	1.65	1.65	1.65	1.65	1.65	1.65	1.65

Annex B

Assumed mortality rates by sex, for selected ages and years; Scotland (rates per 100,000)

Age	Mid-year to mid-year				Percentage improvement ¹ 2006-07 to 2030-31
	2006-07	2011-12	2021-22	2030-31	
MALES					
0	103	96	86	78	24
2	25	21	17	15	40
7	10	8	6	6	42
12	16	14	11	10	38
17	72	56	42	37	49
22	102	80	60	53	48
27	119	94	71	63	47
32	159	144	125	114	28
37	199	188	171	157	21
42	268	247	220	200	25
47	412	391	358	327	20
52	588	563	515	472	20
57	916	800	736	674	26
62	1,611	1,374	1,193	1,092	32
67	2,280	2,000	1,649	1,513	34
72	3,664	2,929	2,442	2,203	40
77	6,222	4,911	3,848	3,458	44
82	9,579	8,036	5,859	5,285	45
87	15,503	13,091	9,803	8,513	45
90 & over	23,122	20,726	17,458	15,192	34
FEMALES					
0	79	74	66	66	16
2	15	13	11	11	29
7	9	8	7	7	22
12	11	9	6	6	45
17	34	30	23	23	32
22	32	28	23	23	28
27	40	36	31	31	22
32	62	58	51	51	18
37	91	84	72	72	21
42	138	123	101	101	27
47	242	227	203	203	16
52	353	333	297	297	16
57	562	516	461	461	18
62	910	811	710	710	22
67	1,370	1,253	1,053	1,053	23
72	2,128	1,848	1,559	1,559	27
77	3,894	3,142	2,574	2,574	34
82	6,641	5,763	4,259	4,259	36
87	11,700	10,463	7,752	7,752	34
90 & over	21,304	19,633	16,712	14,431	32

¹ Percentage improvement in mortality has been calculated using actual, not rounded, mortality rates

Annex C

Fertility and mortality local scaling factors by council and NHS board area

Area	Local Scaling Factors						
	Fertility	Mortality					
		Males			Females		
		0-59	60-79	80+	0-59	60-79	80+
SCOTLAND	1.000	1.000	1.000	1.000	1.000	1.000	1.000
Council areas							
Aberdeen City	0.849	0.961	0.959	0.975	0.892	0.899	1.014
Aberdeenshire	1.140	0.704	0.752	0.873	0.719	0.802	0.908
Angus	1.150	0.803	0.845	0.991	0.942	0.875	1.049
Argyll & Bute	1.120	0.902	0.854	0.991	0.967	0.880	0.982
Clackmannanshire	1.066	0.985	0.985	1.077	1.057	1.057	1.074
Dumfries & Galloway	1.152	0.833	0.848	0.962	0.907	0.903	1.008
Dundee City	0.955	1.287	1.090	0.914	1.326	1.083	0.936
East Ayrshire	1.064	0.975	1.053	1.060	1.137	1.144	1.130
East Dunbartonshire	1.068	0.663	0.752	0.843	0.778	0.783	0.907
East Lothian	1.209	0.774	0.834	1.009	0.819	0.861	0.979
East Renfrewshire	1.210	0.737	0.944	0.928	0.686	0.758	0.923
Edinburgh, City of	0.717	0.866	0.957	0.921	0.888	0.881	0.910
Eliean Siar	1.118	1.178	1.178	1.178	0.948	0.948	0.948
Falkirk	1.046	0.947	1.006	1.061	0.917	1.051	1.096
Fife	1.038	0.842	0.894	0.999	0.943	0.934	0.929
Glasgow City	0.867	1.548	1.520	1.147	1.392	1.337	1.068
Highland	1.141	0.953	0.881	0.957	0.963	0.833	0.920
Inverclyde	1.084	1.489	1.269	1.083	1.206	1.125	1.005
Midlothian	1.144	0.887	0.908	1.095	0.934	1.038	1.021
Moray	1.180	0.848	0.918	0.954	0.875	0.852	1.057
North Ayrshire	1.077	1.074	1.042	1.011	1.079	0.980	1.065
North Lanarkshire	1.097	1.173	1.152	1.072	1.154	1.200	1.062
Orkney Islands	1.078	0.874	0.874	0.874	0.843	0.843	0.843
Perth & Kinross	1.072	0.783	0.773	0.888	0.821	0.840	0.947
Renfrewshire	1.069	1.220	1.165	1.050	1.008	1.140	1.107
Scottish Borders	1.164	0.762	0.776	1.069	0.805	0.915	1.081
Shetland Islands	1.181	0.856	0.856	0.856	0.819	0.819	0.819
South Ayrshire	1.035	0.842	0.953	0.943	0.851	0.957	0.942
South Lanarkshire	1.041	0.978	1.024	1.021	0.991	1.033	1.069
Stirling	0.988	0.759	0.867	1.005	0.939	0.946	0.930
West Dunbartonshire	1.038	1.256	1.254	1.124	1.189	1.192	1.036
West Lothian	1.145	0.872	0.991	1.104	0.996	1.089	1.162
NHS board areas							
Ayrshire & Arran	1.061	0.979	1.018	1.002	1.025	1.033	1.049
Borders	1.164	0.762	0.776	1.069	0.805	0.915	1.081
Dumfries & Galloway	1.152	0.833	0.848	0.962	0.907	0.903	1.008
Fife	1.038	0.842	0.894	0.999	0.943	0.934	0.929
Forth Valley	1.033	0.908	0.963	1.046	0.947	1.020	1.044
Grampian	1.033	0.842	0.869	0.928	0.819	0.850	0.980
Greater Glasgow & Clyde	0.972	1.381	1.324	1.081	1.204	1.206	1.057
Highland	1.135	0.939	0.873	0.968	0.964	0.847	0.940
Lanarkshire	1.077	1.080	1.086	1.037	1.068	1.127	1.047
Lothian	0.920	0.860	0.943	0.980	0.904	0.946	0.985
Orkney	1.078	0.874	0.874	0.874	0.843	0.843	0.843
Shetland	1.181	0.856	0.856	0.856	0.819	0.819	0.819
Tayside	1.048	1.018	0.921	0.927	1.043	0.957	0.970
Western Isles	1.118	1.178	1.178	1.178	0.948	0.948	0.948

Annex D

Migration assumptions for principal projection by council and NHS board area

(persons per annum)

	2006/07	2007/08	2008/09	2009/10	2010/11	2011/12	2012-13 and beyond
SCOTLAND	20,500	16,000	14,000	11,500	10,500	9,500	8,500
Council areas							
Aberdeen City	850	250	-50	-400	-550	-650	-800
Aberdeenshire	2,300	2,000	1,850	1,650	1,600	1,500	1,450
Angus	650	600	550	500	500	450	450
Argyll & Bute	150	150	200	200	250	250	250
Clackmannanshire	200	150	150	150	150	150	150
Dumfries & Galloway	200	250	300	350	350	400	400
Dundee City	-50	-200	-300	-400	-400	-450	-500
East Ayrshire	0	0	0	-50	-50	-50	-50
East Dunbartonshire	-500	-500	-500	-550	-550	-550	-550
East Lothian	950	800	700	650	600	600	550
East Renfrewshire	-350	-250	-200	-150	-150	-100	-100
Edinburgh, City of	4,600	3,600	3,200	2,650	2,400	2,150	1,950
Eilean Siar	100	100	100	100	100	100	100
Falkirk	500	500	500	500	500	500	500
Fife	1,650	1,600	1,550	1,550	1,500	1,500	1,550
Glasgow City	1,900	700	200	-500	-800	-1,050	-1,300
Highland	1,700	1,500	1,400	1,350	1,300	1,250	1,200
Inverclyde	-350	-350	-350	-300	-300	-300	-300
Midlothian	50	-50	-100	-150	-200	-250	-250
Moray	400	250	200	100	50	50	0
North Ayrshire	-200	-50	-50	50	50	100	100
North Lanarkshire	0	0	0	50	50	50	50
Orkney Islands	200	200	150	150	150	150	150
Perth & Kinross	1,850	1,600	1,500	1,400	1,350	1,300	1,250
Renfrewshire	-300	-350	-350	-400	-450	-450	-500
Scottish Borders	750	800	800	800	850	850	850
Shetland Islands	-150	-100	-100	-100	-50	-50	-50
South Ayrshire	300	300	300	300	300	300	300
South Lanarkshire	1,250	1,150	1,150	1,100	1,100	1,050	1,050
Stirling	800	600	500	400	350	300	250
West Dunbartonshire	-100	-200	-200	-250	-250	-300	-300
West Lothian	1,150	950	900	750	750	700	650
NHS board areas							
Ayrshire & Arran	100	250	250	300	300	350	350
Borders	750	800	800	800	850	850	850
Dumfries & Galloway	200	250	300	350	350	400	400
Fife	1,650	1,600	1,550	1,550	1,500	1,500	1,550
Forth Valley	1,500	1,250	1,150	1,050	1,000	950	900
Grampian	3,550	2,500	2,000	1,350	1,100	900	650
Greater Glasgow & Clyde	550	-750	-1,200	-1,950	-2,300	-2,550	-2,850
Highland	1,850	1,650	1,600	1,550	1,550	1,500	1,450
Lanarkshire	1,000	950	950	950	950	900	900
Lothian	6,750	5,300	4,700	3,900	3,550	3,200	2,900
Orkney	200	200	150	150	150	150	150
Shetland	-150	-100	-100	-100	-50	-50	-50
Tayside	2,450	2,000	1,750	1,500	1,450	1,300	1,200
Western Isles	100	100	100	100	100	100	100

Annex E

Migration assumptions for high migration variant by council and NHS board area

(persons per annum)

	2006-07	2007-08	2008-09	2009-10	2010-11	2011-12	2012-13 and beyond
SCOTLAND	24,750	24,500	22,500	20,000	19,000	18,000	17,000
Council areas							
Aberdeen City	1,200	1,150	800	400	200	50	-150
Aberdeenshire	2,500	2,450	2,300	2,100	2,000	1,950	1,850
Angus	750	750	700	650	650	600	600
Argyll & Bute	200	200	300	350	400	400	450
Clackmannanshire	250	250	250	200	200	200	200
Dumfries & Galloway	300	300	400	550	600	650	700
Dundee City	100	100	0	-100	-150	-200	-250
East Ayrshire	100	100	100	50	50	50	50
East Dunbartonshire	-400	-400	-400	-450	-450	-450	-450
East Lothian	1,000	1,000	900	800	750	700	650
East Renfrewshire	-300	-300	-200	-100	-100	-50	0
Edinburgh, City of	5,250	5,200	4,750	4,200	3,950	3,750	3,500
Eilean Siar	150	150	150	150	150	150	150
Falkirk	600	600	600	650	650	650	650
Fife	1,900	1,900	1,950	2,050	2,050	2,050	2,100
Glasgow City	2,550	2,450	1,750	850	500	150	-200
Highland	1,850	1,850	1,800	1,750	1,700	1,700	1,650
Inverclyde	-300	-300	-300	-250	-250	-250	-250
Midlothian	100	100	0	-100	-100	-150	-200
Moray	500	500	400	300	300	250	200
North Ayrshire	-100	-100	0	100	150	200	250
North Lanarkshire	100	100	150	200	200	250	250
Orkney Islands	200	200	200	150	150	150	150
Perth & Kinross	1,950	1,950	1,800	1,700	1,600	1,550	1,500
Renfrewshire	-200	-200	-250	-300	-300	-350	-350
Scottish Borders	800	800	850	950	1,000	1,000	1,050
Shetland Islands	-150	-150	-100	-50	-50	0	0
South Ayrshire	350	350	400	400	450	450	450
South Lanarkshire	1,400	1,400	1,400	1,350	1,350	1,350	1,350
Stirling	900	900	750	600	550	500	450
West Dunbartonshire	-50	-50	-100	-150	-150	-200	-200
West Lothian	1,250	1,250	1,150	1,000	950	900	850
NHS board areas							
Ayrshire & Arran	350	350	500	550	650	700	750
Borders	800	800	850	950	1,000	1,000	1,050
Dumfries & Galloway	300	300	400	550	600	650	700
Fife	1,900	1,900	1,950	2,050	2,050	2,050	2,100
Forth Valley	1,750	1,750	1,600	1,450	1,400	1,350	1,300
Grampian	4,200	4,100	3,500	2,800	2,500	2,250	1,900
Greater Glasgow & Clyde	1,550	1,450	750	-150	-500	-900	-1,200
Highland	2,050	2,050	2,100	2,100	2,100	2,100	2,100
Lanarkshire	1,250	1,250	1,300	1,300	1,300	1,350	1,350
Lothian	7,600	7,550	6,800	5,900	5,550	5,200	4,800
Orkney	200	200	200	150	150	150	150
Shetland	-150	-150	-100	-50	-50	0	0
Tayside	2,800	2,800	2,500	2,250	2,100	1,950	1,850
Western Isles	150	150	150	150	150	150	150

Annex F

Trends in net migration, mid-2002 to mid-2006 by council and NHS board areas

(net migrants per annum)

	Estimated net civilian migration from mid-year population estimates				
	2001/02	2002/03	2003/04	2004/05	2005/06
SCOTLAND	-3,745	8,879	26,004	19,296	21,167
Aberdeen City	-2,438	-1,672	-1,678	241	953
Aberdeenshire	173	1,290	2,593	1,795	2,362
Angus	2	88	1,164	701	684
Argyll & Bute	-32	678	1,039	264	119
Clackmannanshire	-152	-195	545	502	191
Dumfries & Galloway	33	395	1,235	864	168
Dundee City	-899	-552	-794	334	-13
East Ayrshire	-249	97	334	-182	12
East Dunbartonshire	-949	-246	-371	-514	-482
East Lothian	655	501	508	273	952
East Renfrewshire	150	19	-61	-84	-361
Edinburgh, City of	-719	379	5,138	4,103	4,775
Eilean Siar	-84	56	315	245	110
Falkirk	427	473	1,521	1,511	492
Fife	1,300	1,053	2,799	2,164	1,659
Glasgow City	-214	1,182	1,258	1,417	2,100
Highland	-392	1,281	2,573	2,323	1,720
Inverclyde	-186	-295	-387	-177	-366
Midlothian	-443	-657	-210	-433	77
Moray	-537	142	385	155	431
North Ayrshire	52	592	279	36	-192
North Lanarkshire	-97	262	388	155	-29
Orkney Islands	24	144	247	103	194
Perth & Kinross	563	1,138	1,721	1,612	1,873
Renfrewshire	-668	-611	-195	-484	-272
Scottish Borders	733	1,249	1,306	712	731
Shetland Islands	-24	-90	48	32	-166
South Ayrshire	28	447	773	273	287
South Lanarkshire	14	1,158	2,500	981	1,249
Stirling	37	247	33	477	842
West Dunbartonshire	-281	-293	-193	-405	-107
West Lothian	428	619	1,191	302	1,174

9. NOTES ON STATISTICAL PUBLICATIONS

ENQUIRIES ABOUT THIS PUBLICATION Enquiries should be addressed to: Statistics Customer Services, General Register Office for Scotland, Ladywell House, Edinburgh, EH12 7TF Telephone: (0131) 314 4299, Fax: (0131) 314 4696, E-mail: customer@gro-scotland.gsi.gov.uk.

NATIONAL STATISTICS This is a National Statistics publication for Scotland. It has been produced to high professional standards set out in the National Statistics Code of Practice and Release Practice Protocol (www.statistics.gov.uk/about/ns/cop/default.asp). These statistics undergo regular quality assurance reviews to ensure that they meet customer needs. They are produced free from any political interference.

THE GENERAL REGISTER OFFICE FOR SCOTLAND (GROS) GROS is the devolved Government department in Scotland responsible for the registration of births, marriages, civil partnerships, deaths, divorces and adoptions in Scotland. We are responsible for the Census of Population in Scotland which we use, with other sources of information, to produce population and household statistics. We make available important information for family history. Our website is www.nrscotland.gov.uk/.

OTHER GROS STATISTICS Further detailed statistics produced by GROS are available from the statistics pages of the GROS website (www.nrscotland.gov.uk/statistics-and-data). Statistics from the 2001 Census are on the Scotland's Census Results On-Line website (www.scrol.gov.uk) and on the Census section of the main website (www.nrscotland.gov.uk/statistics-and-data/census).

Information about future publications is provided on the GROS website (www.nrscotland.gov.uk/statistics-and-data/future-publications). If you would like to receive notification of forthcoming statistical publications, you can register your interest on The Scottish Government's ScotStat website at www.scotland.gov.uk/Topics/Statistics/scotstat/Intro.

COMPLAINTS AND SUGGESTIONS If you are not satisfied with our service, please write to Kirsty MacLachlan, Head of Demography Division, Room 1/2/7, Ladywell House, Ladywell Road, Edinburgh, EH12 7TF, Telephone: (0131) 314 4242, E-mail: kirsty.maclachlan@gro-scotland.gsi.gov.uk.

We also welcome any comments or suggestions that would help us to improve our standards of service.

RELATED ORGANISATIONS

ORGANISATION	CONTACT
THE SCOTTISH GOVERNMENT (SG): The SG is responsible for a wide range of devolved functions. The aim of the statistical service in the SG is to provide relevant and reliable statistical information, analysis and advice that meets the needs of government, business and the people of Scotland	Ryan Stewart, Office of the Chief Statistician, The Scottish Government, 3 rd Floor West Rear, St Andrews House, Edinburgh, EH1 3DG Telephone: (0131) 244 0442 Fax: (0131) 244 0335 E-mail: statistics.enquiries@scotland.gsi.gov.uk Website: www.scotland.gov.uk/Topics/Statistics
The OFFICE FOR NATIONAL STATISTICS (ONS) is responsible for producing a wide range of economic and social statistics. It also, for England and Wales, registers life events and holds the Census of Population.	Customer Contact Centre, Room 1.015, Office for National Statistics, Cardiff Road, Newport, NP10 8XG Telephone: 0845 601 3034 Minicom: 01633 812399 Fax: 01633 652747 E-mail: info@statistics.gsi.gov.uk Website: www.statistics.gov.uk
The NORTHERN IRELAND STATISTICS AND RESEARCH AGENCY (NISRA) is Northern Ireland's official statistics organisation. The Agency also has responsibility, in Northern Ireland, for the registration of births, marriages, adoptions and deaths and the Census of Population.	Northern Ireland Statistics and Research Agency, McAuley House, 2-14 Castle Street, Belfast, BT1 1SA Telephone 028 9034 8100 Fax 028 9034 8106 Website: www.nisra.gov.uk

© Crown Copyright. Brief extracts from the Crown Copyright material in General Register Office for Scotland publications may be reproduced provided the source is fully acknowledged.