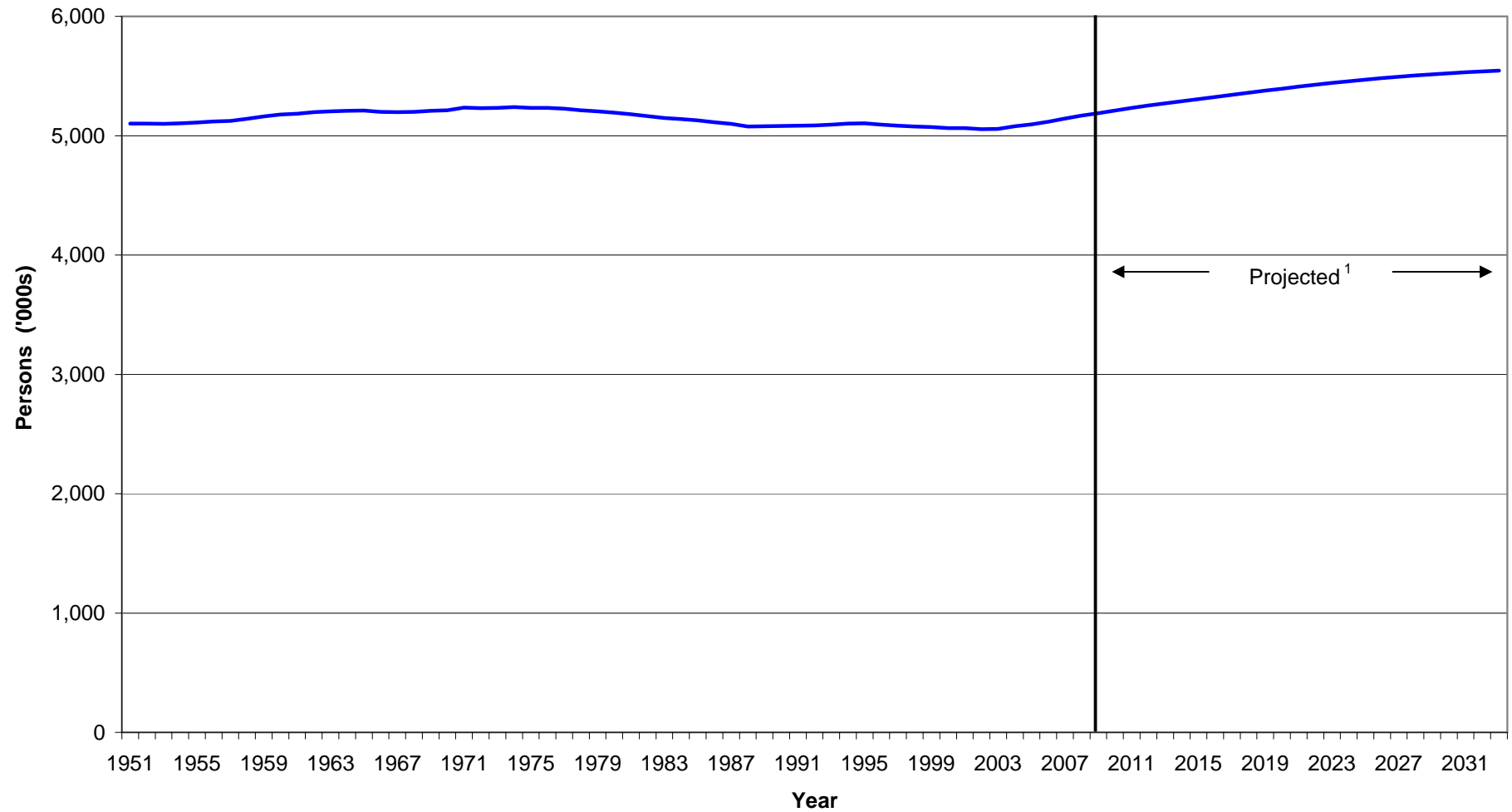


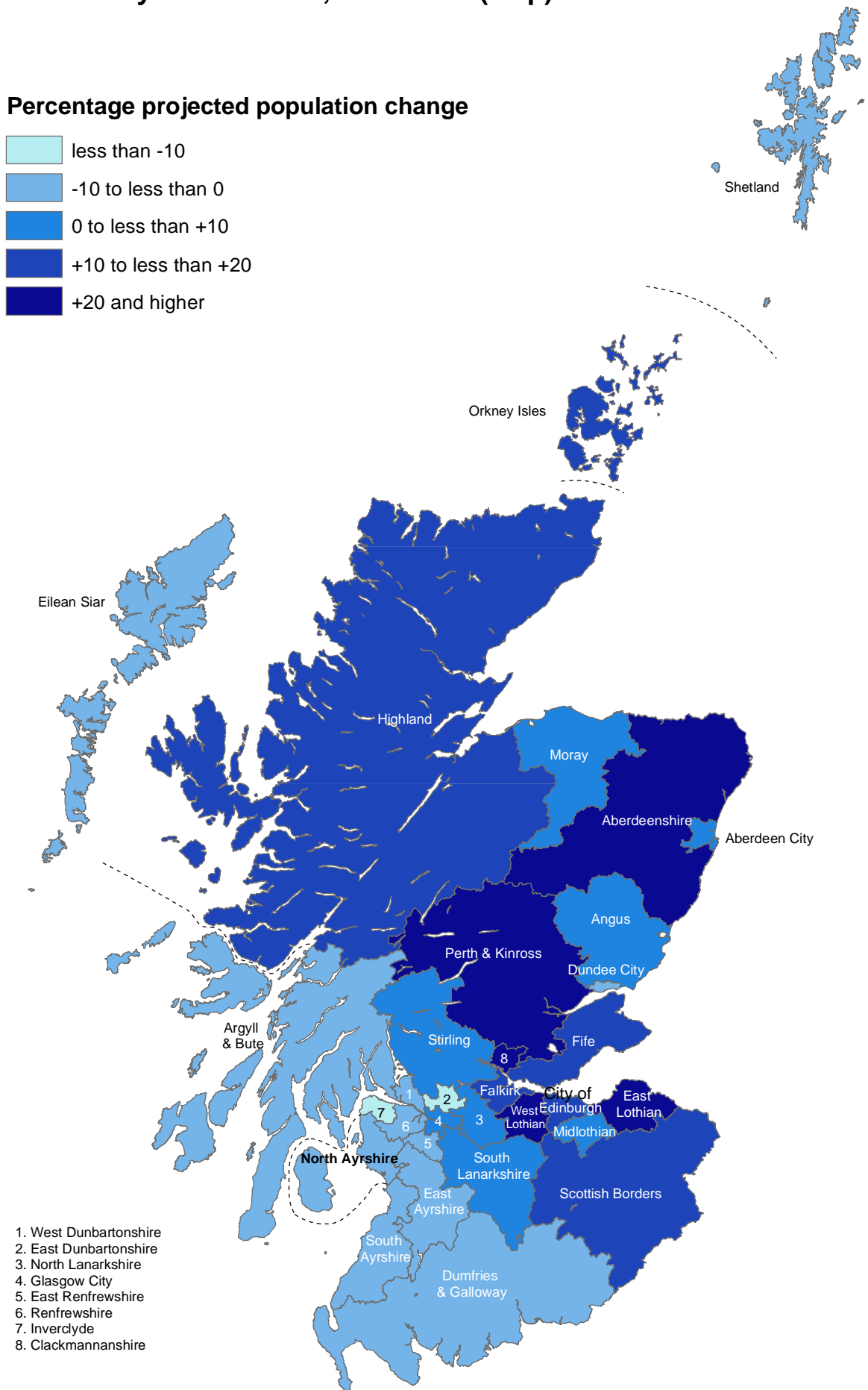
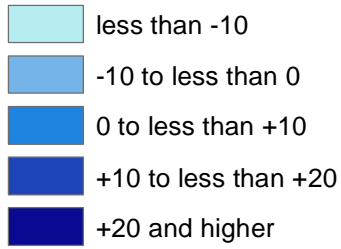
Figure 1 Estimated population of Scotland (2008-based), actual and projected, 1951-2033



¹ 2008-based projection.

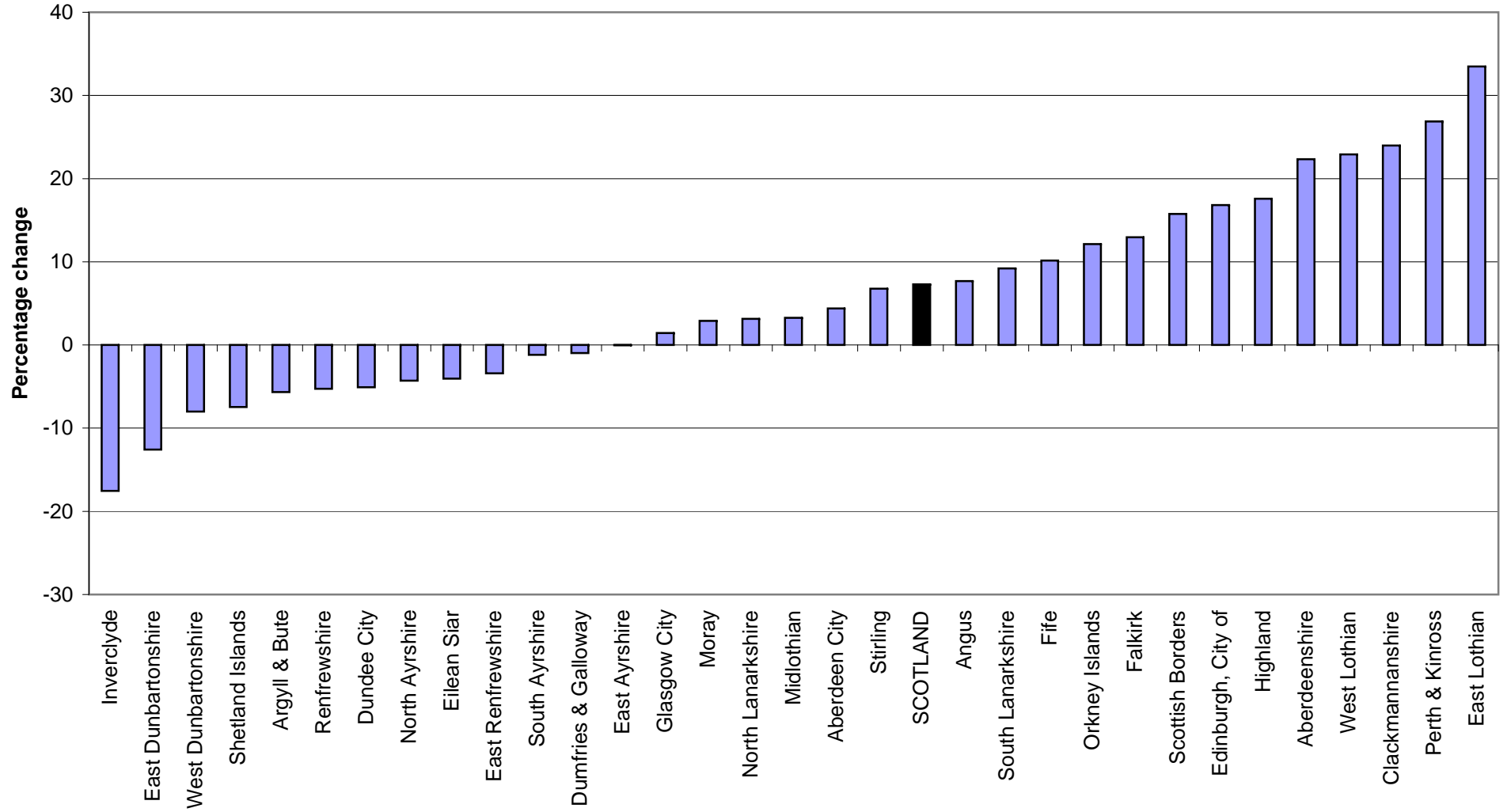
**Figure 2a Projected percentage change in population, (2008-based),
by council area, 2008-2033 (Map)**

Percentage projected population change



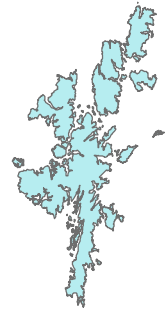
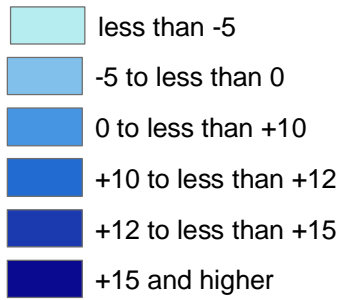
1. West Dunbartonshire
2. East Dunbartonshire
3. North Lanarkshire
4. Glasgow City
5. East Renfrewshire
6. Renfrewshire
7. Inverclyde
8. Clackmannanshire

Figure 2b Projected percentage change (2008-based), council area, 2008 - 2033



Projected percentage change in population, (2008-based), by NHS board area, 2008-2033 (Map)

Percentage projected population change



Shetland

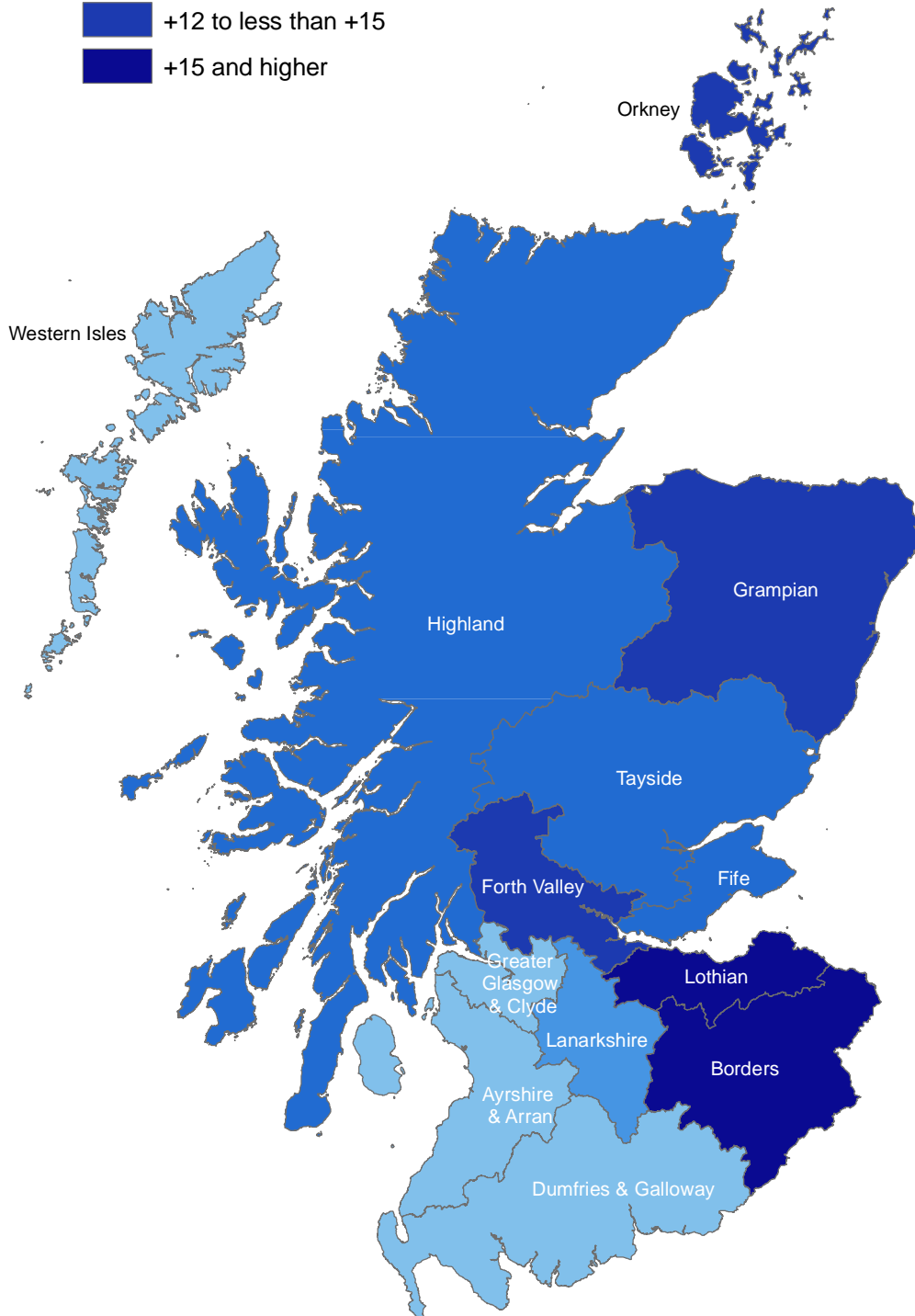


Figure 3b Projected percentage change in population (2008-based), by NHS board area, 2008-2033 (Chart)

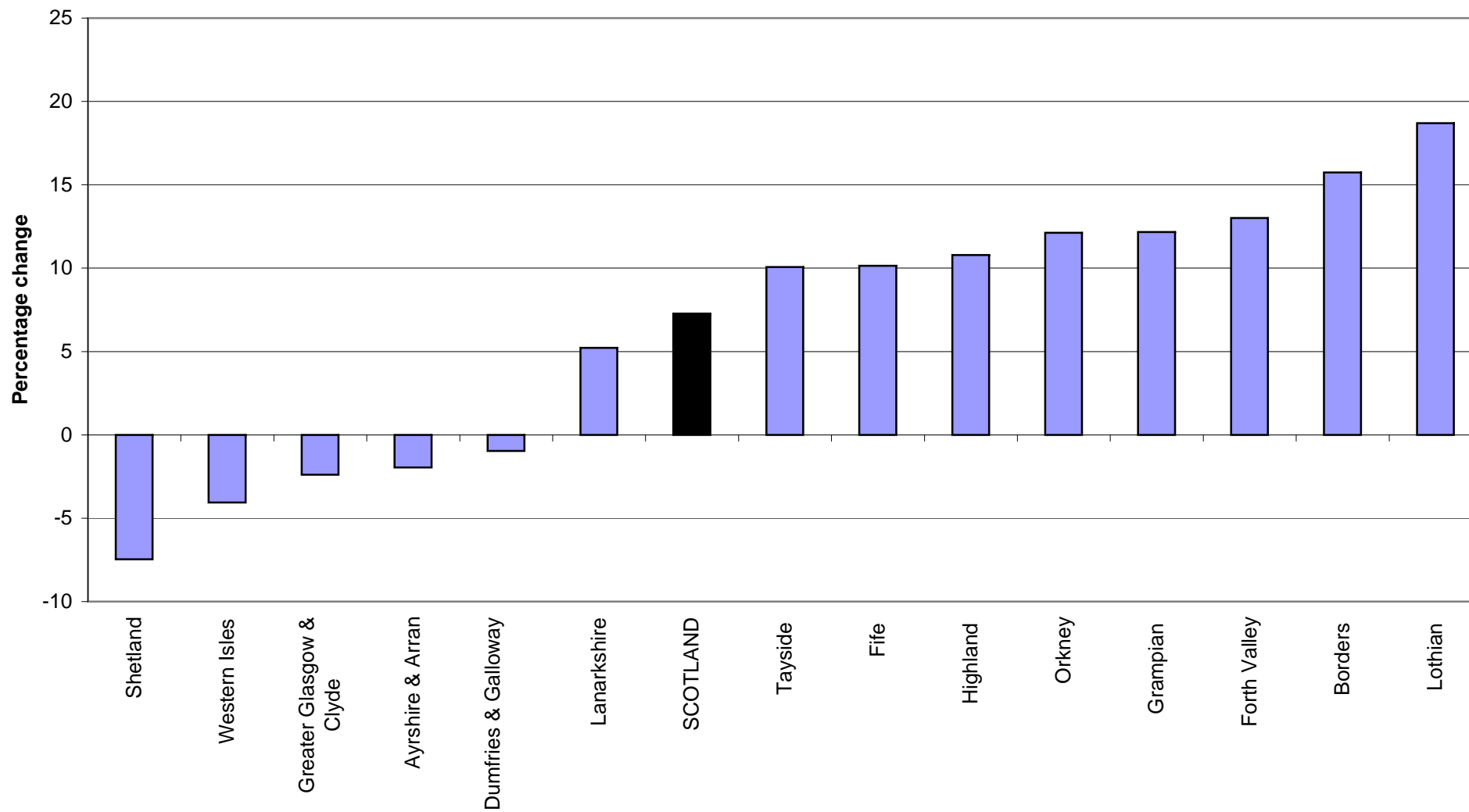


Figure 4a Projected percentage change in population aged 0-15 (2008-based), council area, 2008 - 2033

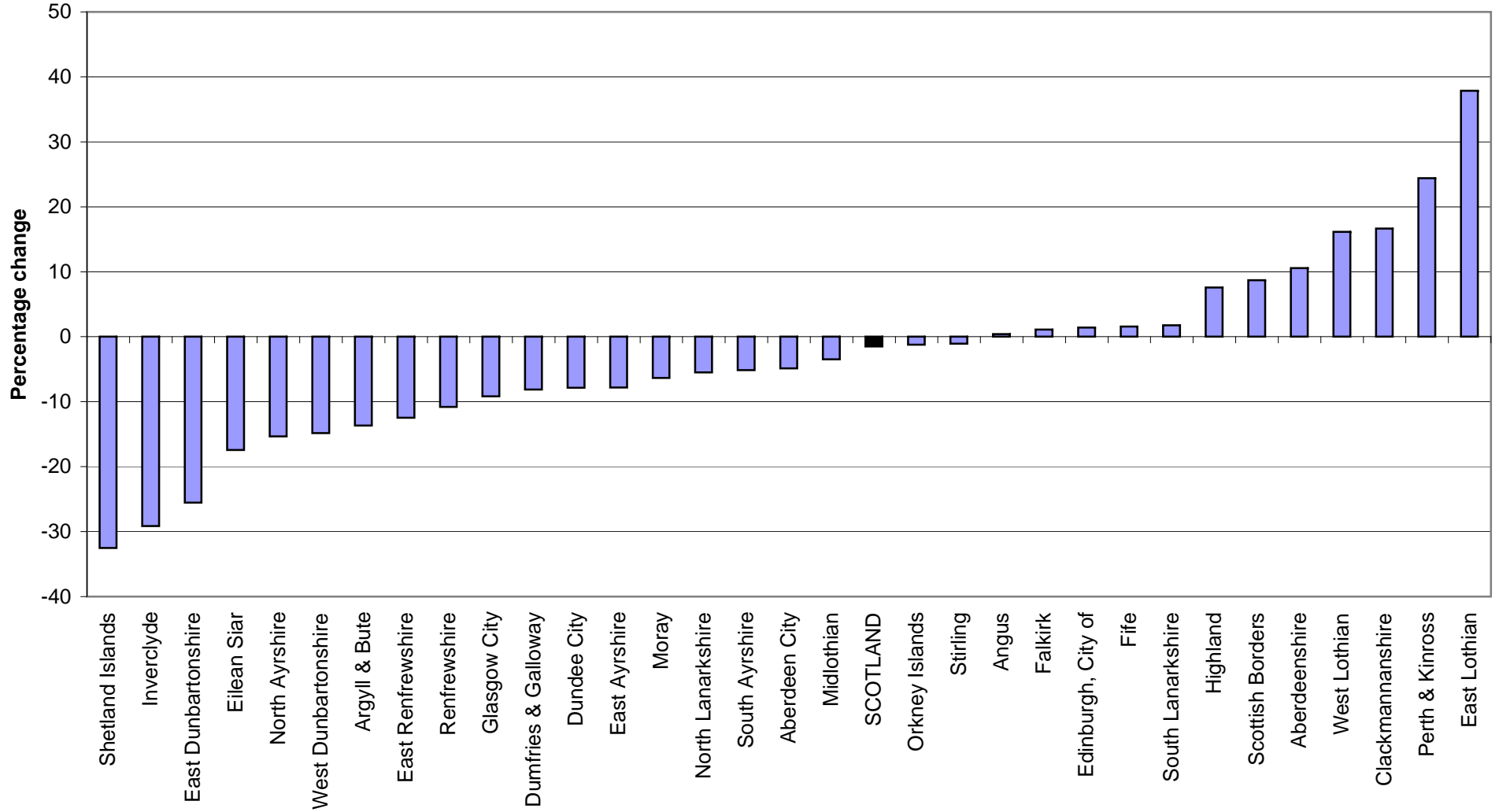
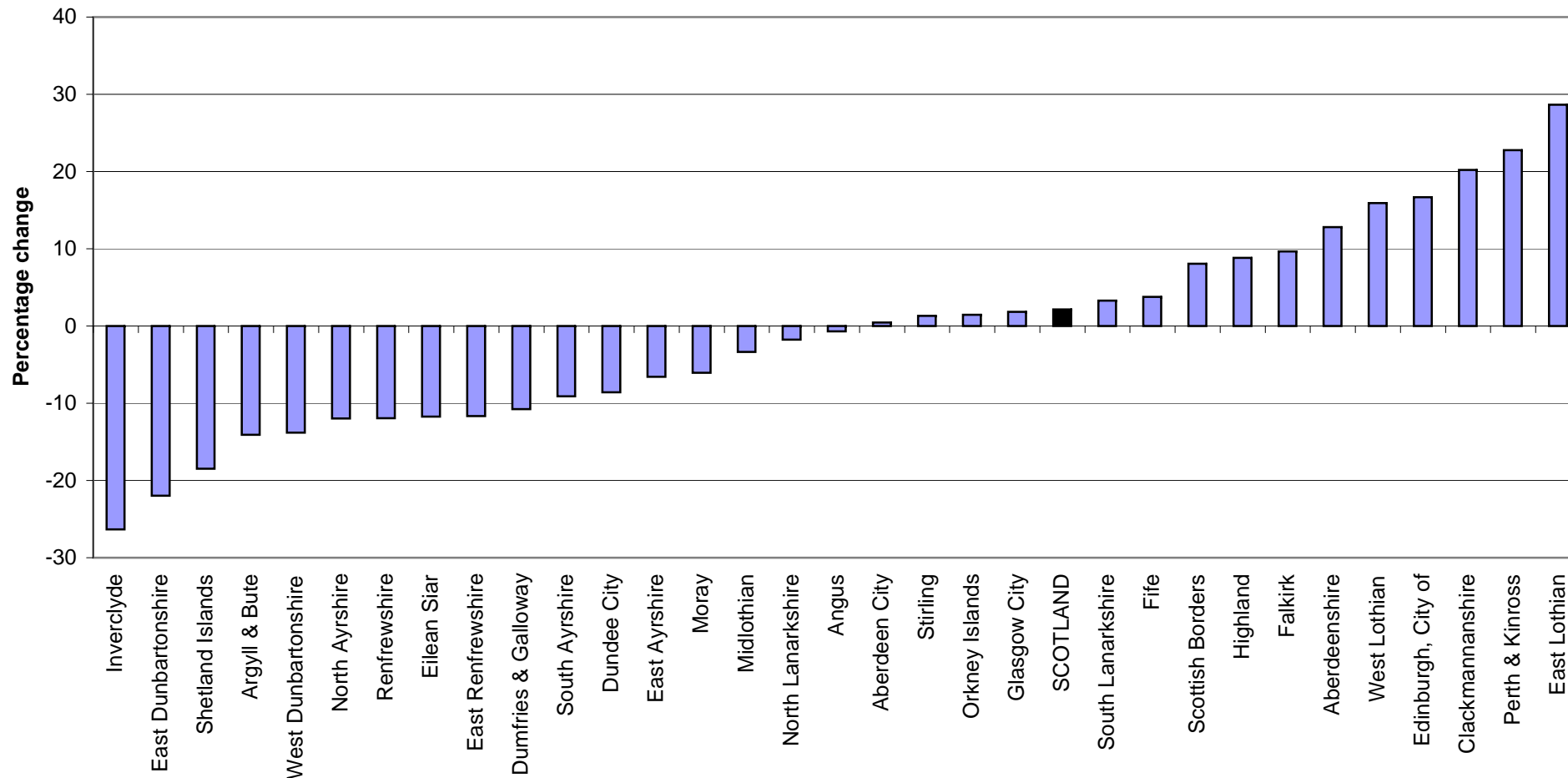
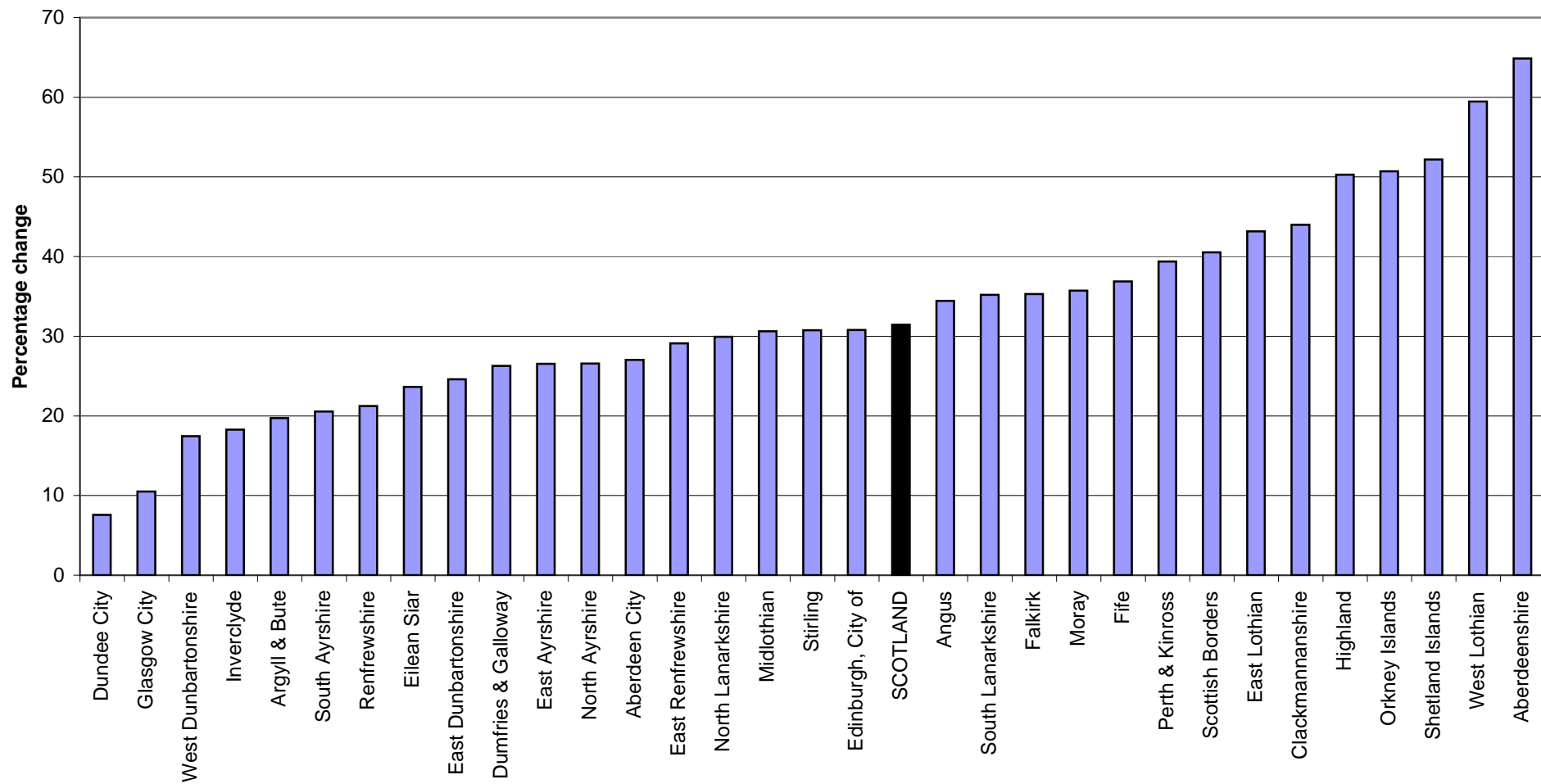


Figure 4b Projected percentage change in population of working age¹ (2008-based), by council area, 2008-2033



¹Includes the change in women's state pension age from 60 to 65 between 2010 and 2020 and the subsequent change of both male and female state pension age to 66 by 2026

Figure 4c Projected percentage change in population of pensionable age¹ (2008-based), by council area, 2008-2033



¹Includes the change in women's state pension age from 60 to 65 between 2010 and 2020 and the subsequent change of both male and female state pension age to 66 by 2026

Figure 4d Projected percentage change in population aged 75 and over (2008 based), by council area, 2008-2033

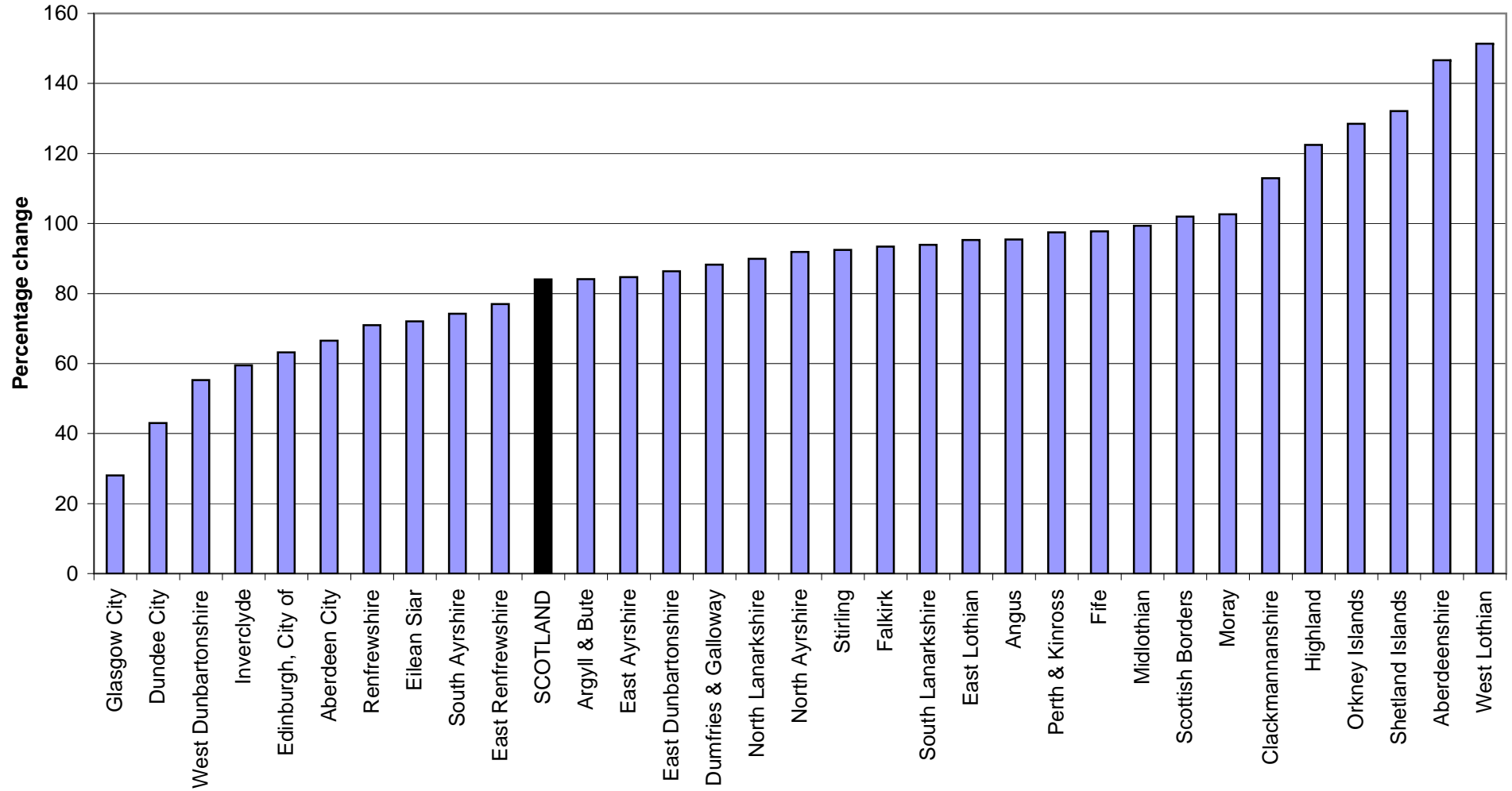
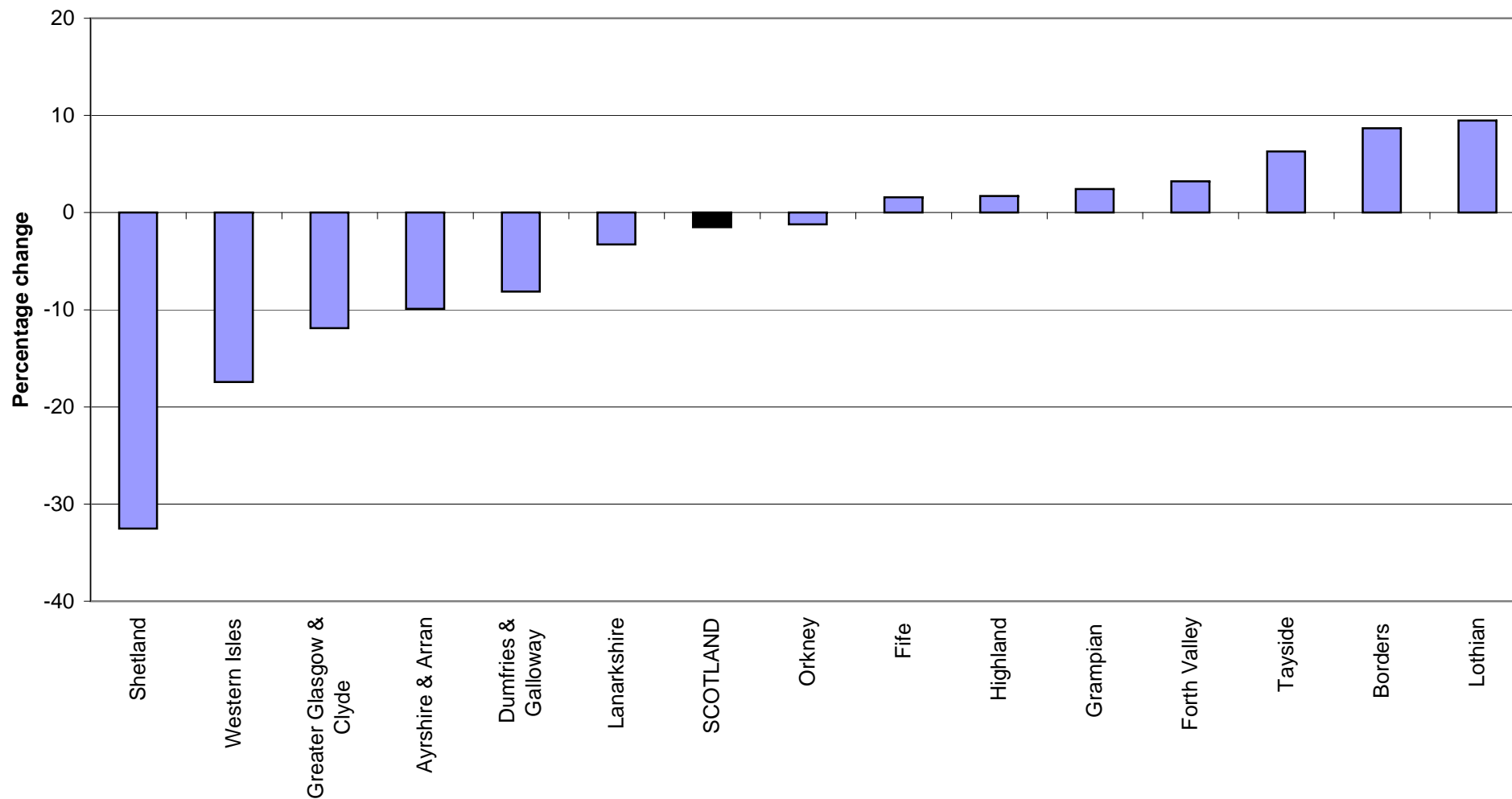
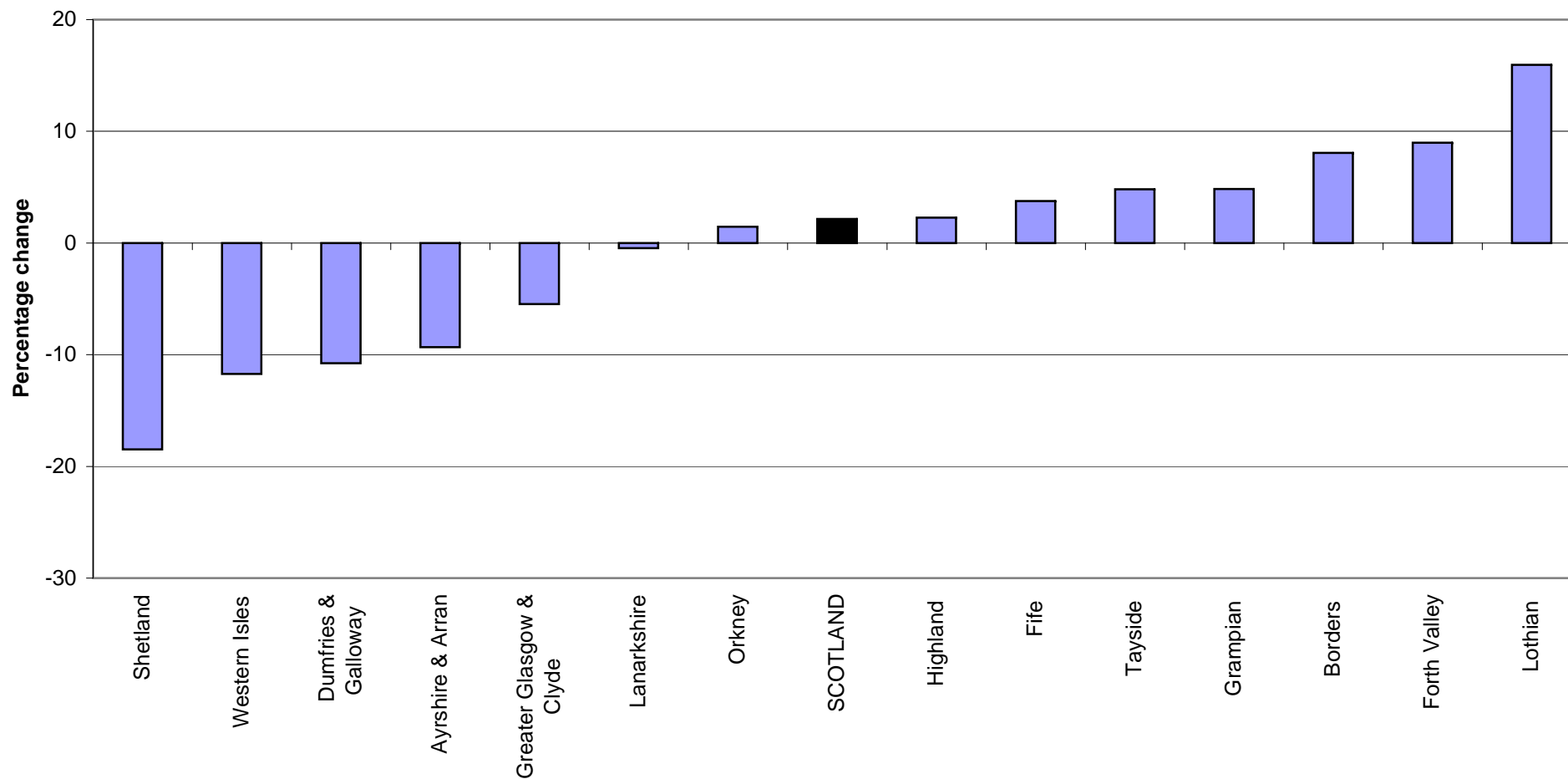


Figure 5a Projected percentage change in population aged 0-15 (2008-based), by NHS board area, 2008-2033

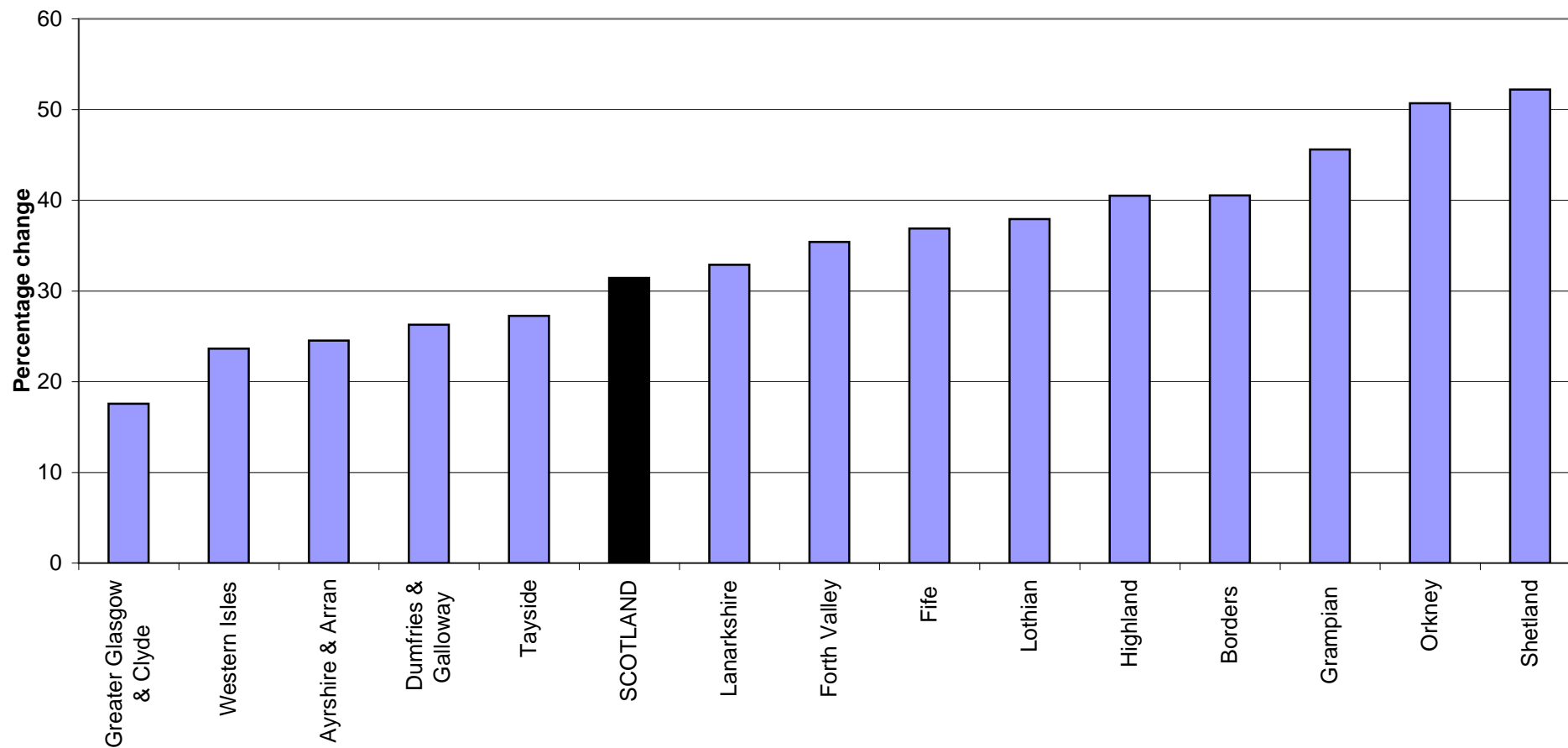


**Figure 5b Projected percentage change in population of working age¹ (2008-based),
by NHS board area, 2008-2033**



¹Includes the change in women's state pension age from 60 to 65 between 2010 and 2020 and the subsequent change of both male and female state pension age to 66 by 2026

Figure 5c Projected percentage change in population of pensionable age¹ (2008-based), by NHS board area, 2008-2033



¹Includes the change in women's state pension age from 60 to 65 between 2010 and 2020 and the subsequent change of both male and female state pension age to 66 by 2026

**Figure 5d Projected percentage change in population aged 75 and over (2008 based),
by NHS board area, 2008-2033**

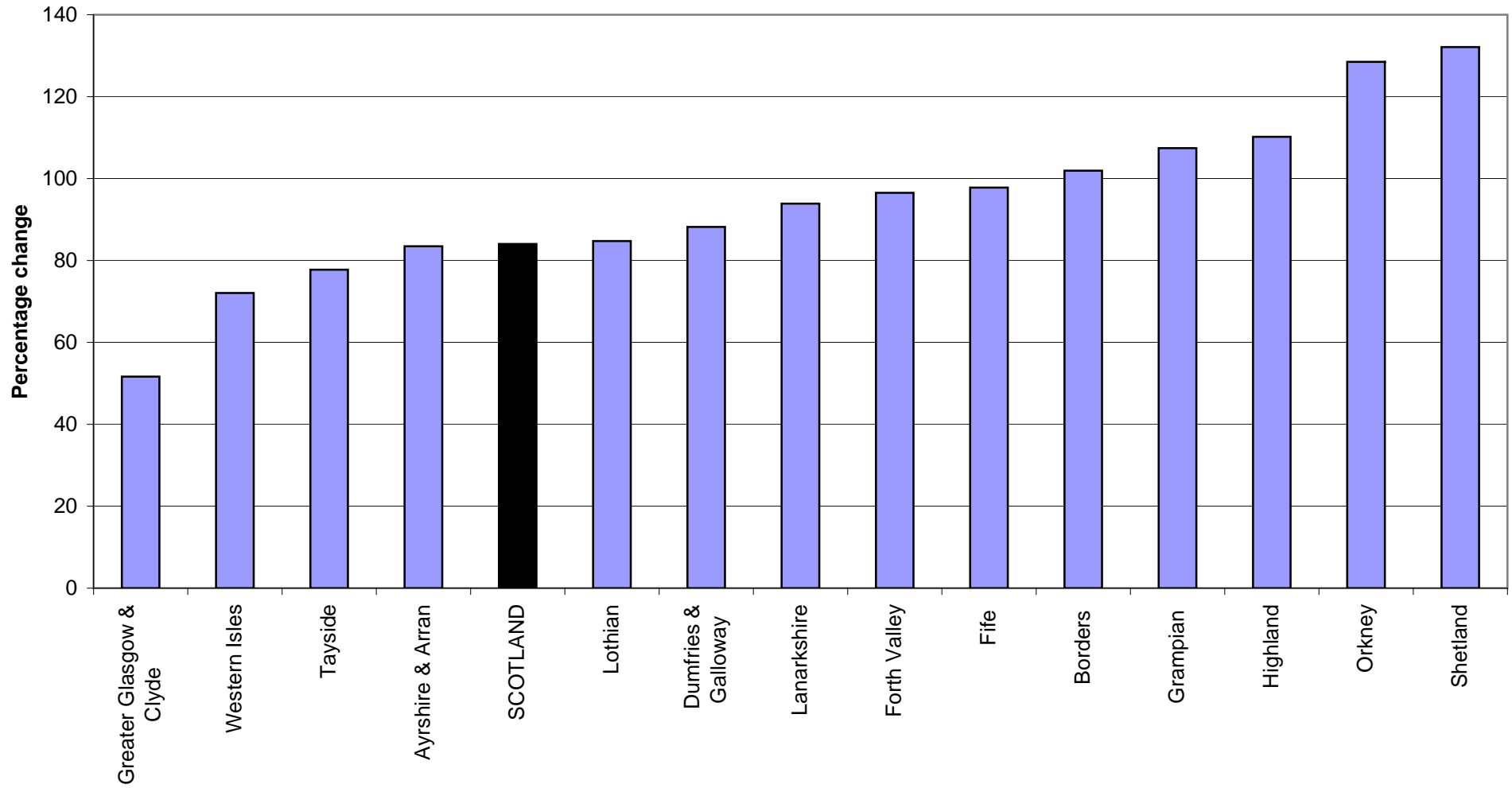
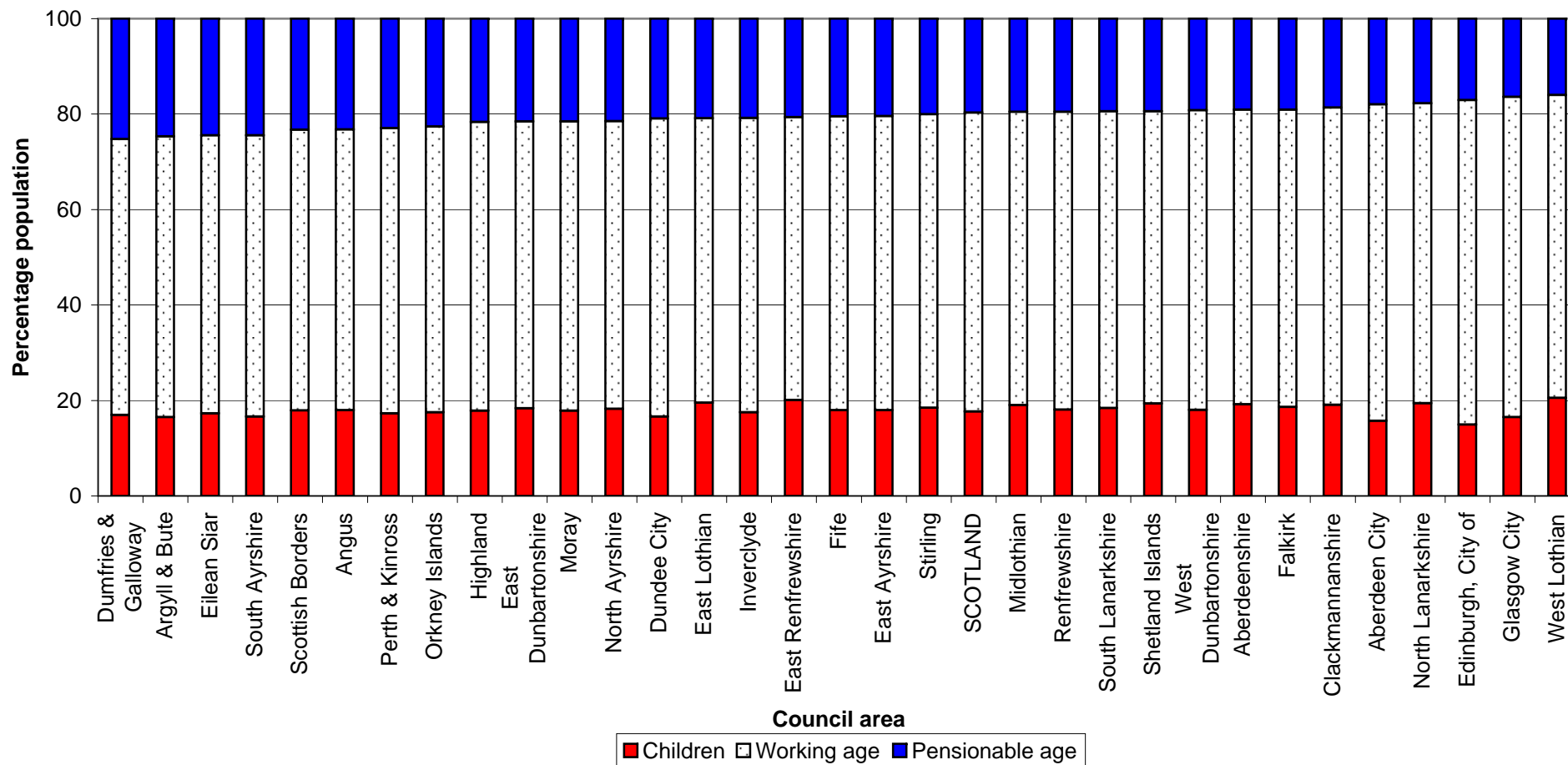
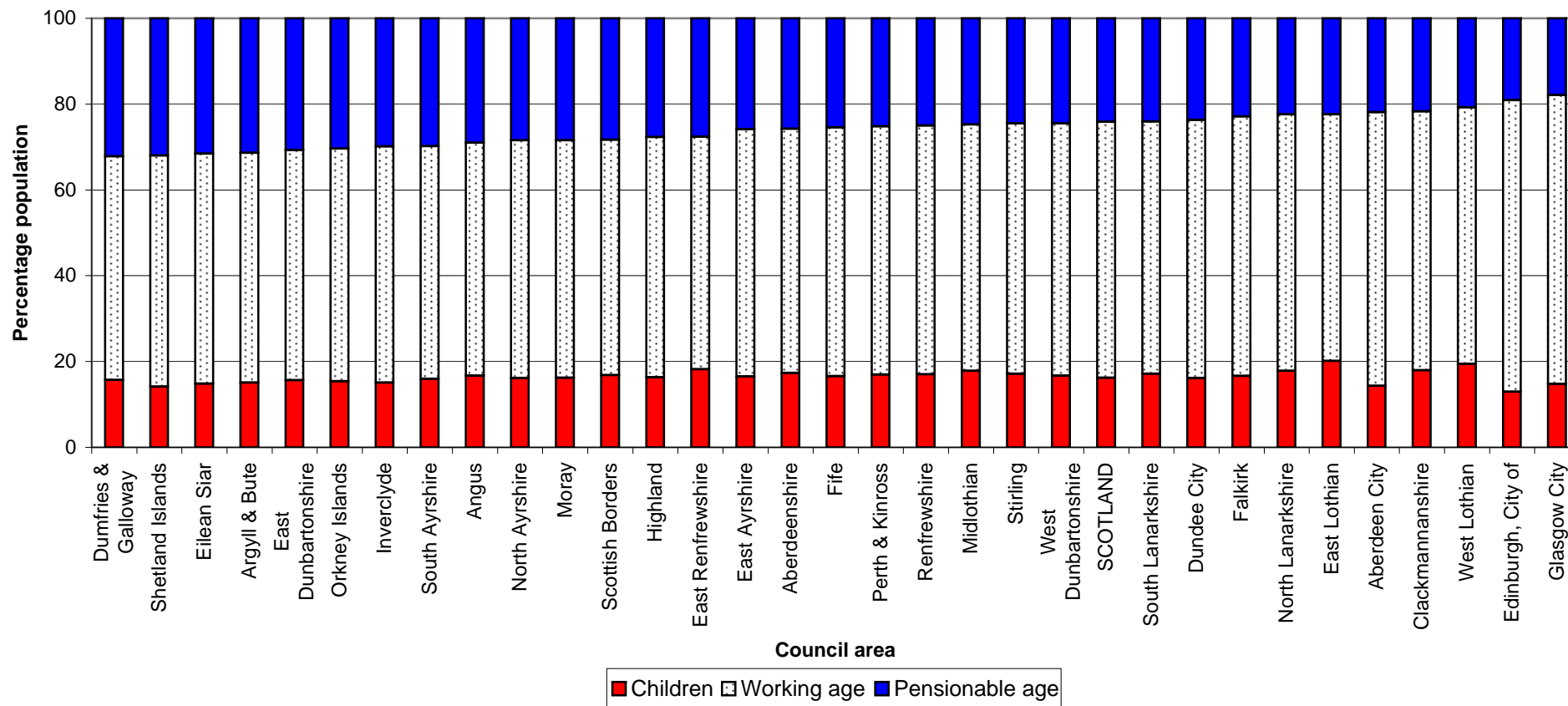


Figure 6a Age structure of council areas in 2008: children, working age, pensionable age¹ (%)
(ranked by percentage of pensionable age)



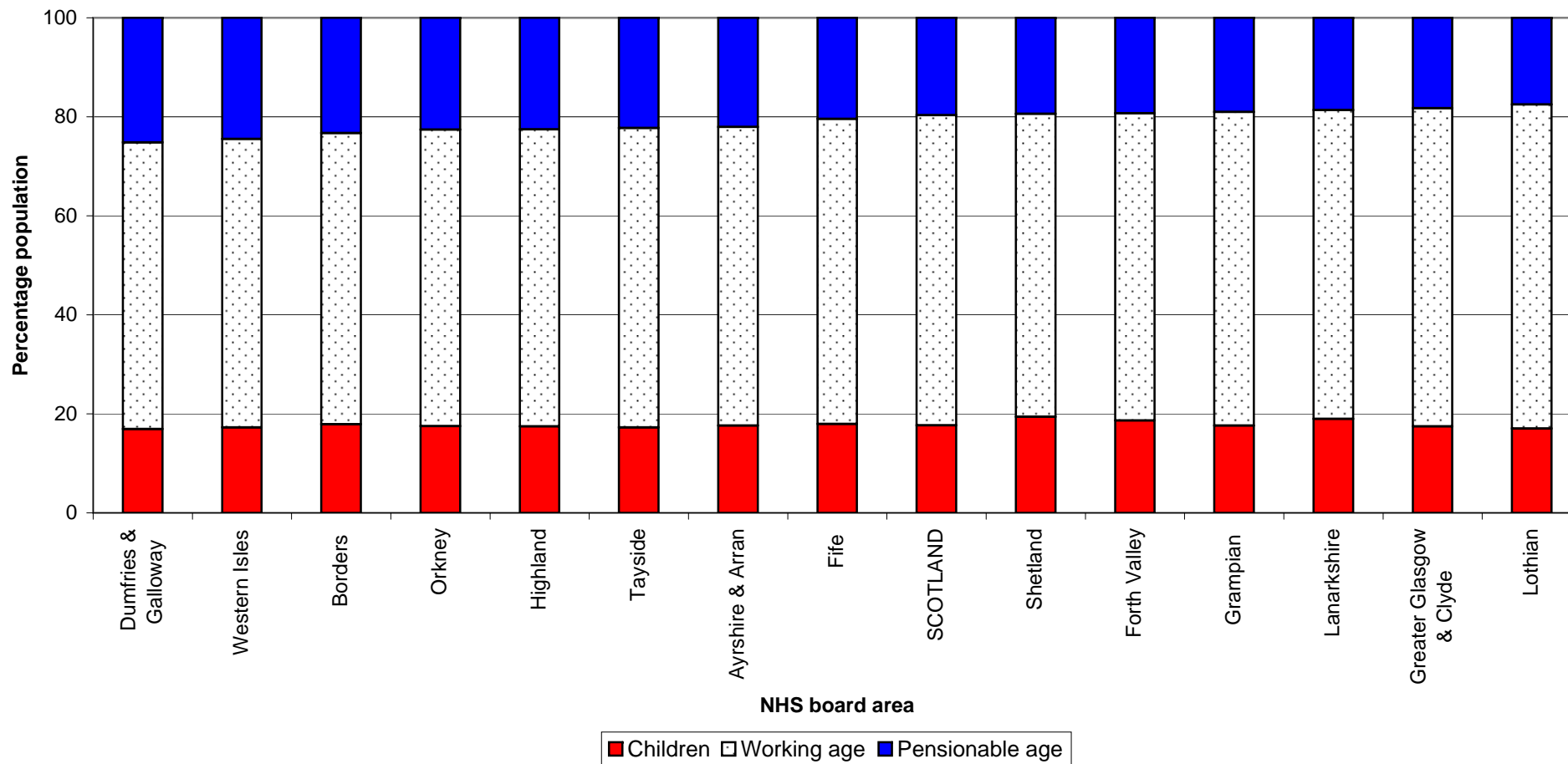
¹Includes the change in women's state pension age from 60 to 65 between 2010 and 2020 and the subsequent change of both male and female state pension age to 66 by 2026

Figure 6b Projected age structure of council areas in 2033 (2008-based): children, working age, and pensionable age¹ (%), (ranked by percentage of pensionable age)



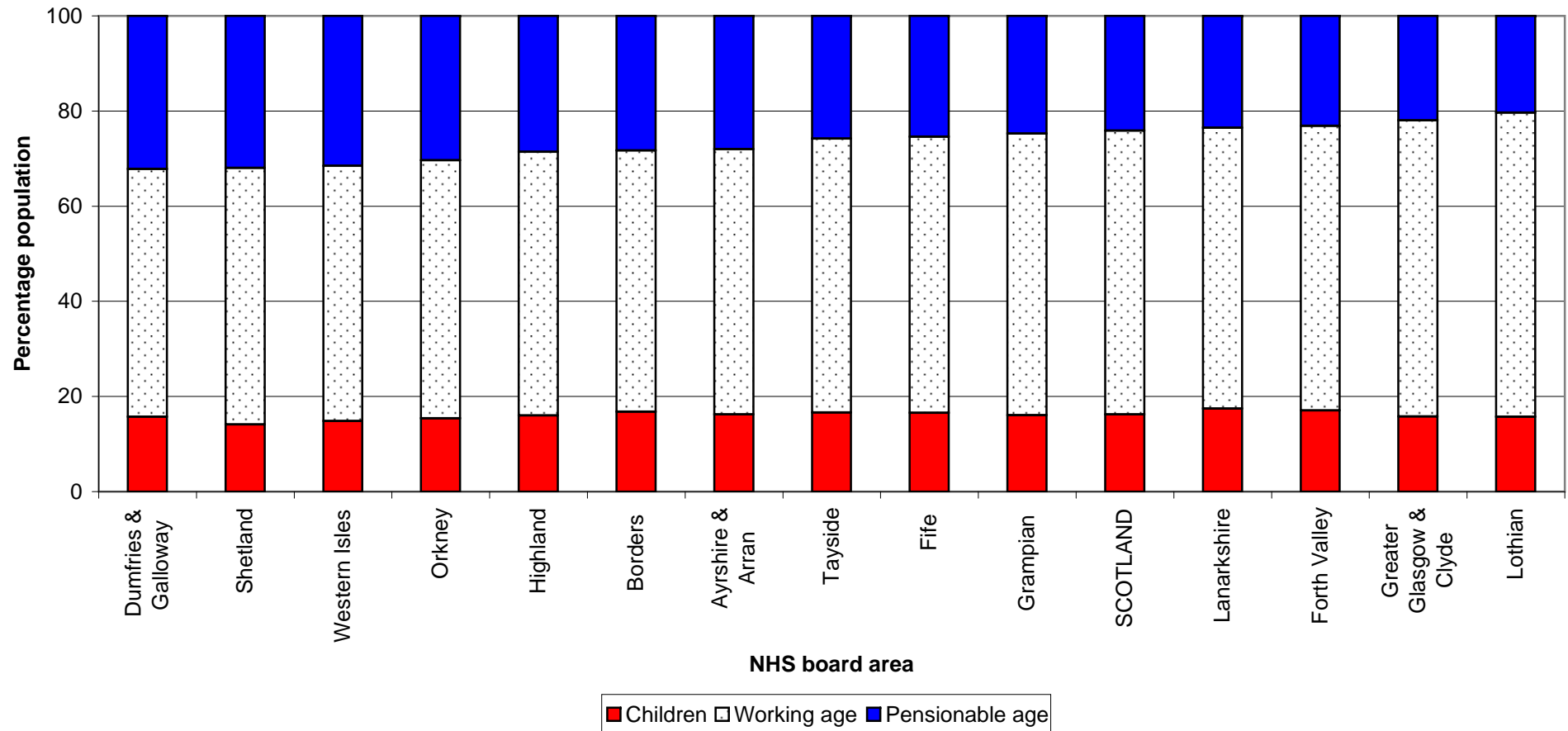
¹Includes the change in women's state pension age from 60 to 65 between 2010 and 2020 and the subsequent change of both male and female state pension age to 66 by 2026

**Figure 7a Age structure of NHS board areas in 2008: children, working age, pensionable age¹ (%)
(ranked by percentage of pensionable age)**



¹Includes the change in women's state pension age from 60 to 65 between 2010 and 2020 and the subsequent change of both male and female state pension age to 66 by 2026

Figure 7b Projected age structure of NHS board areas in 2033 (2008-based): children, working age, pensionable age¹ (%), (ranked by percentage of pensionable age)



¹Includes the change in women's state pension age from 60 to 65 between 2010 and 2020 and the subsequent change of both male and female state pension age to 66 by 2026

Figure 8 Percentage difference between projected 2031 population using 2006-based and 2008-based projections, by council area

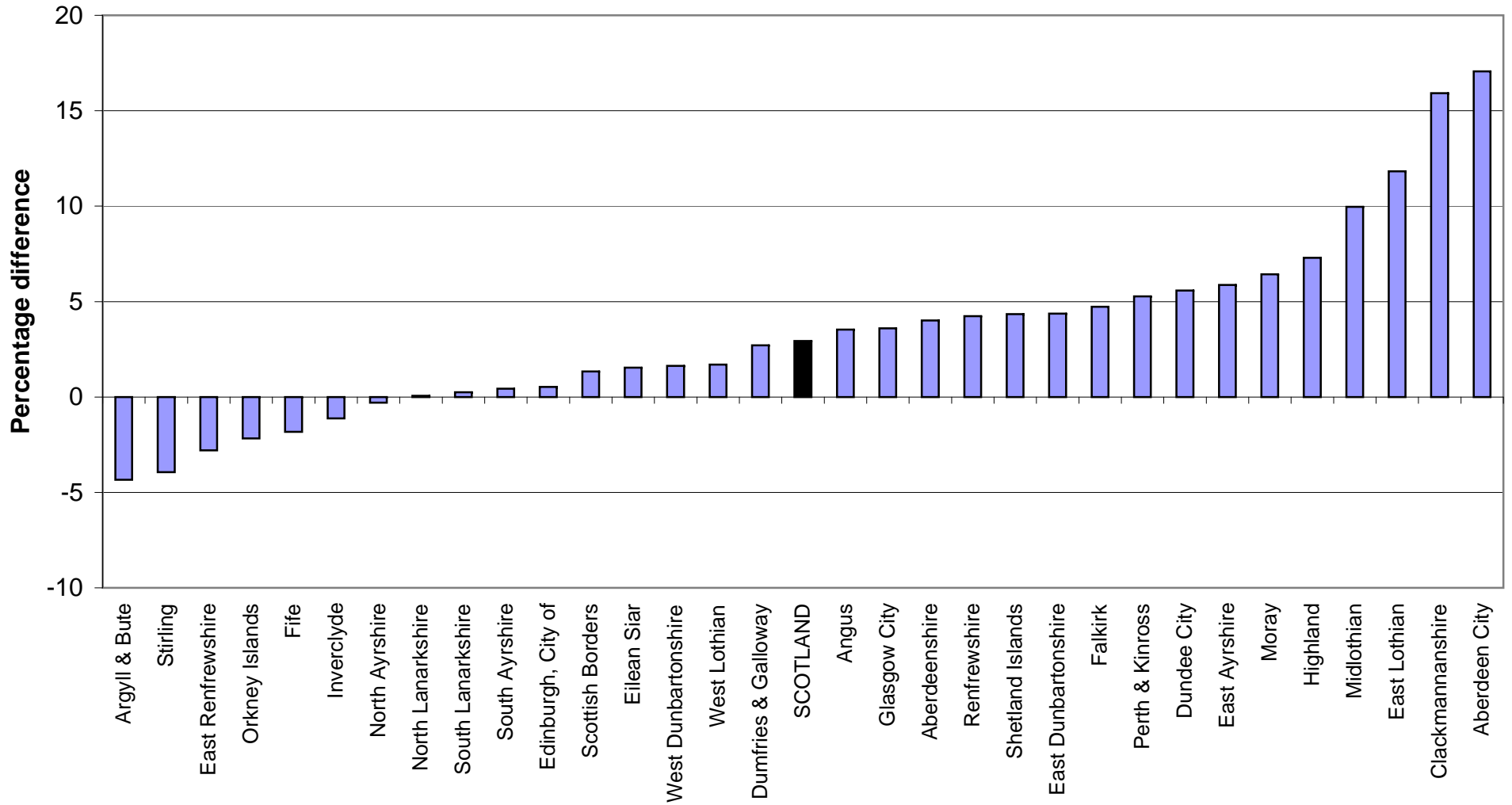


Figure 9 Percentage difference between 2006-based and 2008-based population projections in 2031, by NHS board area

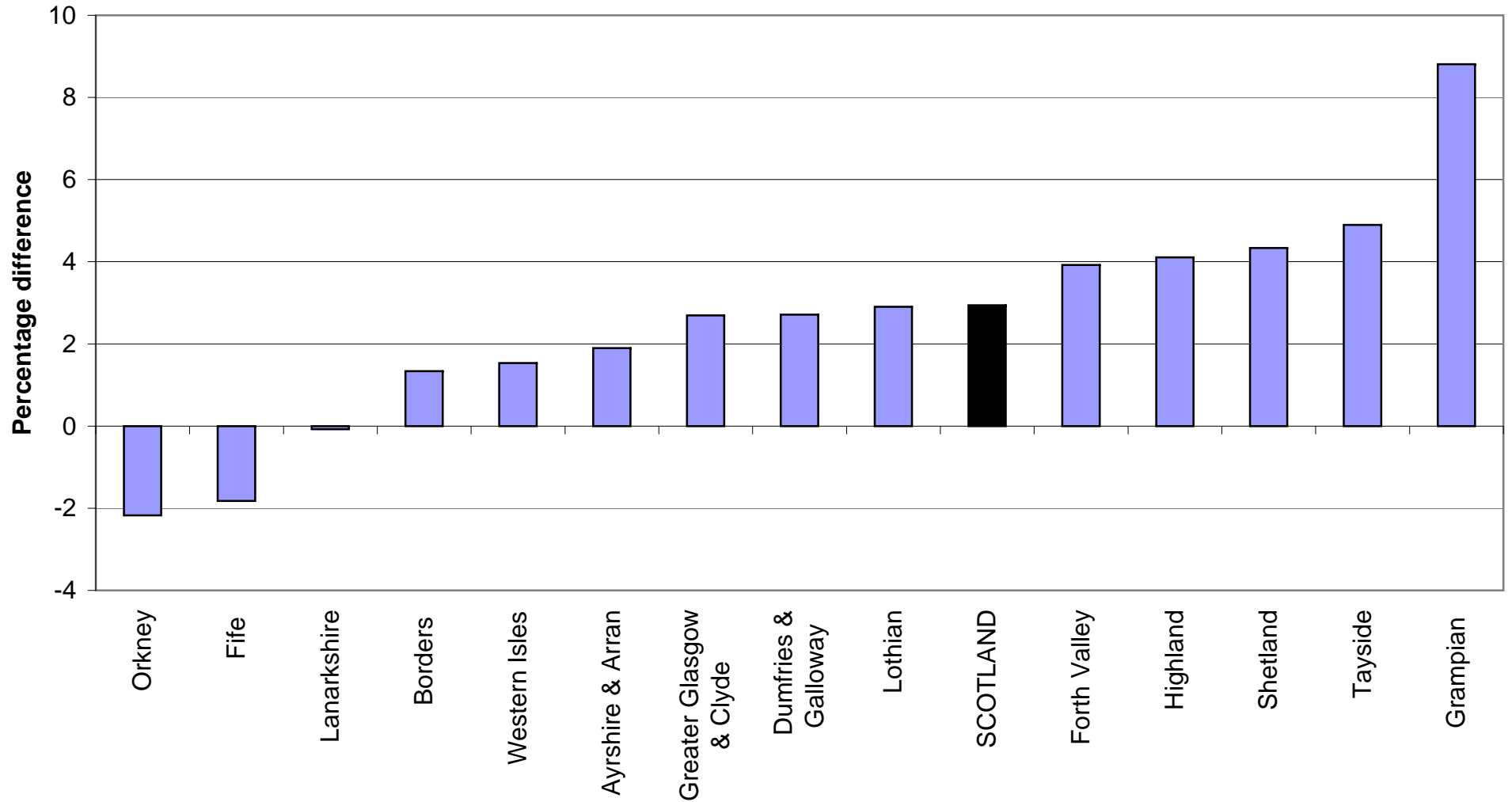


Figure 10 a Projected percentage change in population under low migration, principal and high migration projections (2008-based), by council area, 2008-2033

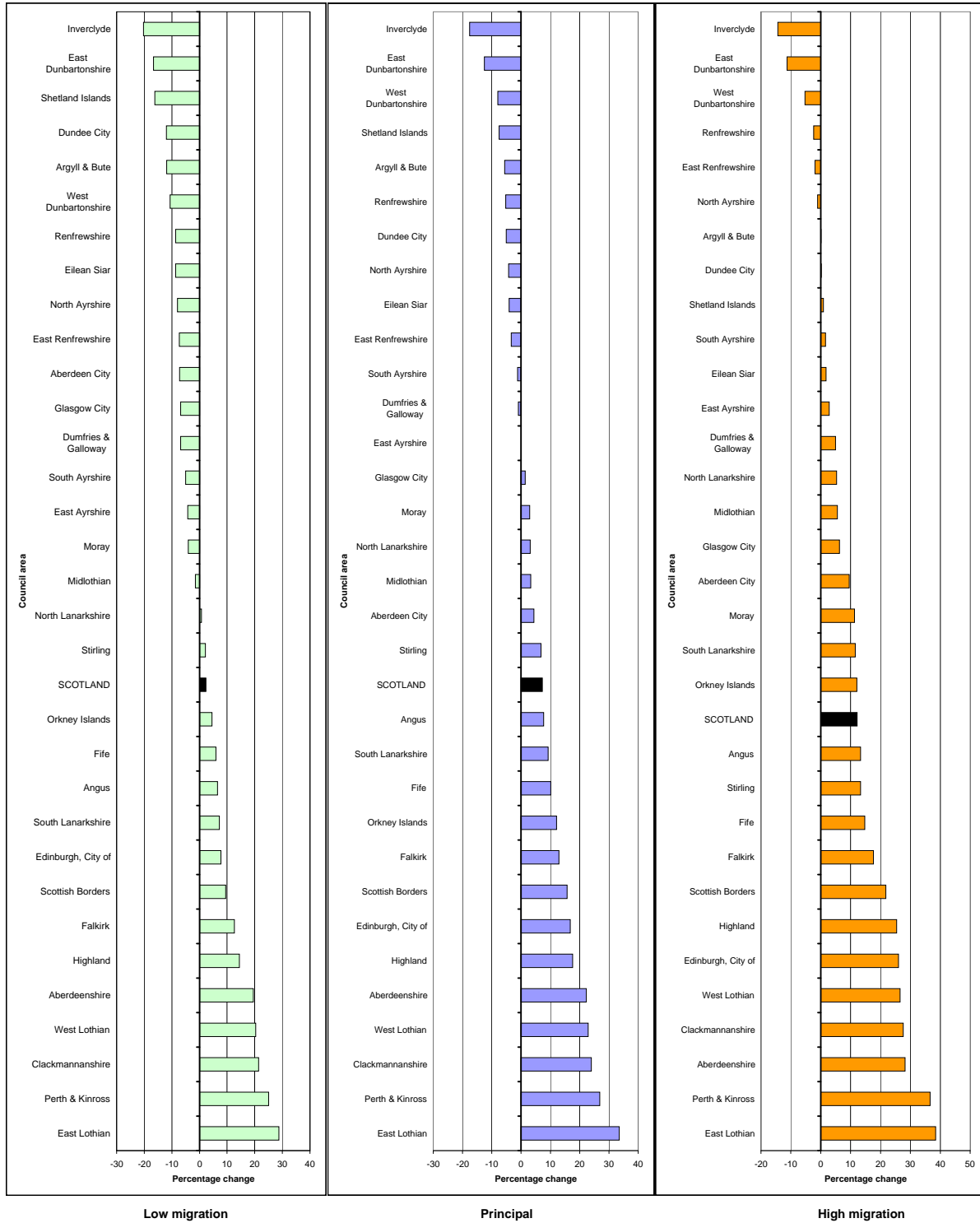
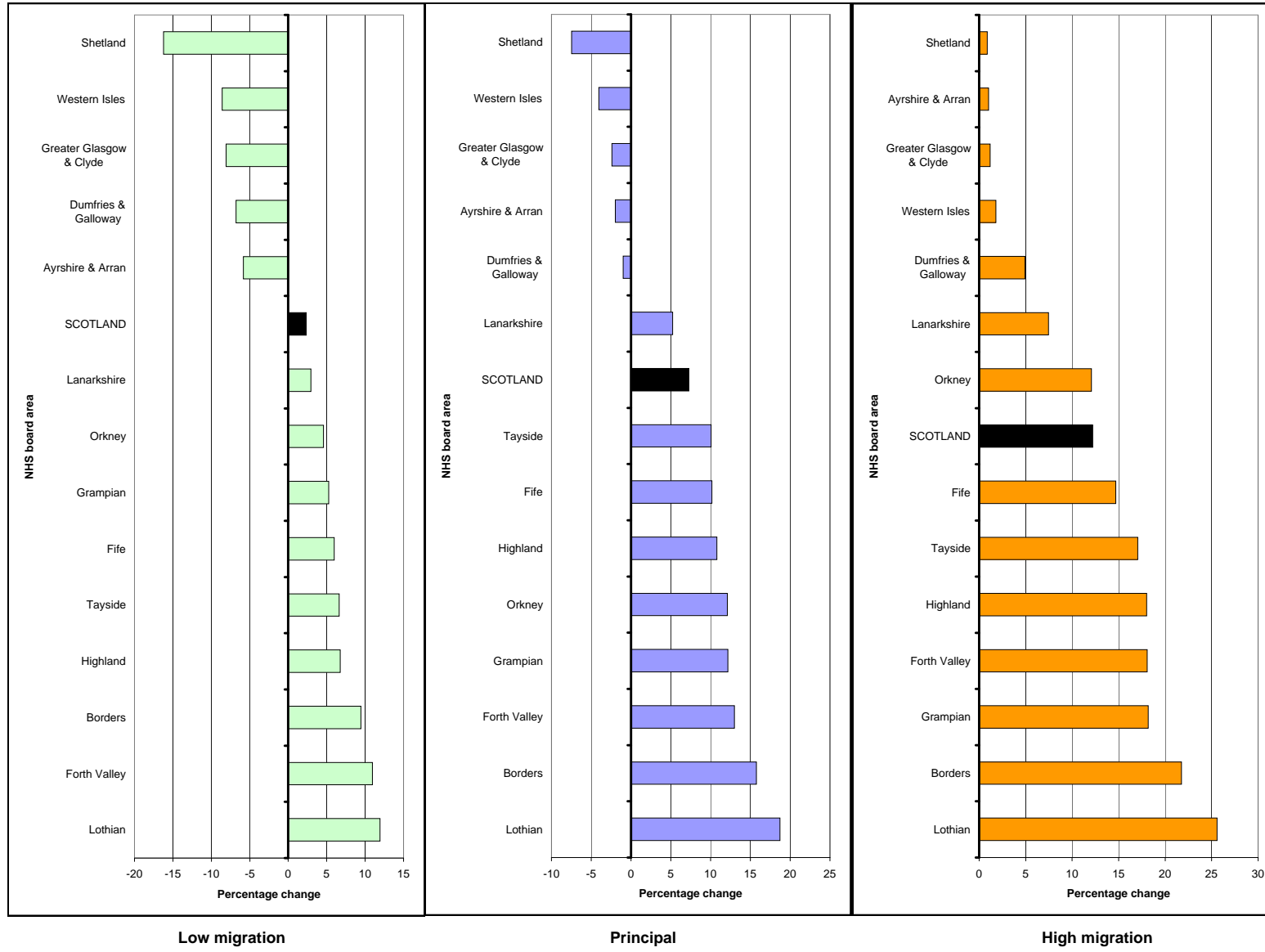


Figure 10 b Projected percentage change in population under low migration, principal and high migration projections (2008-based), by NHS board area, 2008-2033



**Figure 11 Projected percentage change in births (2008-based),
by council area, 2008-2033**

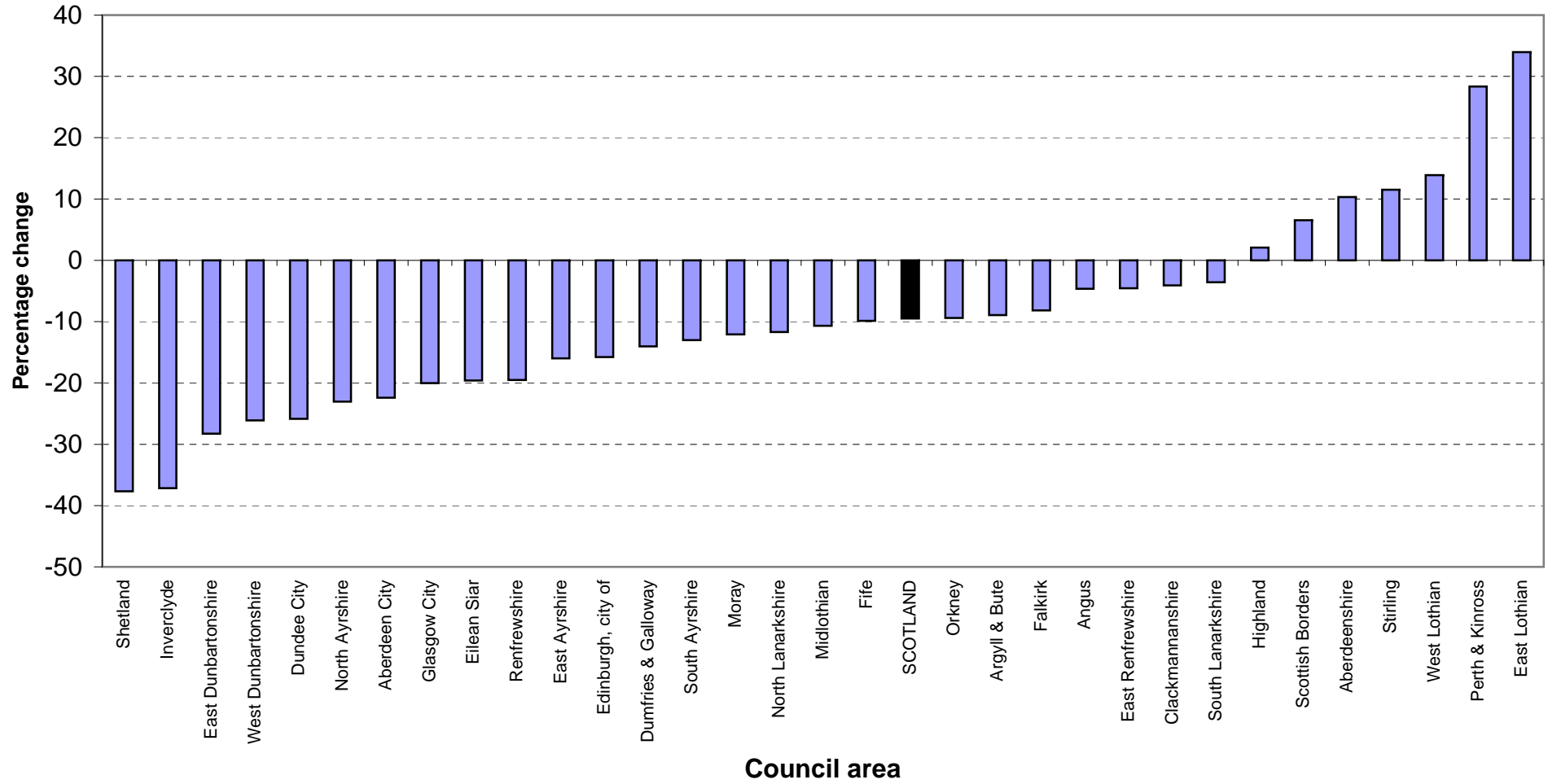


Figure 12 Migration to and from outwith Scotland and to and from other council areas within Scotland, 2003-2008

