

Comparison between NHSCR and Community Health Index sources of migration

Cecilia Macintyre

General Register Office for Scotland



General Register Office
for
SCOTLAND
information about Scotland's people

Overview of Presentation

- Description of trends in Scotland
- Overview of methodology for mid-year estimates
- Comparison of NHSCR and CHI estimates
- Future work



General Register Office for Scotland

- “Information about Scotland’s people”
- Vital events statistics
- Census
- Population estimates and projections
- Household estimates and projections
- Other statistics (eg drug deaths, dwellings)
- NHS Central Register
- General demographic advice



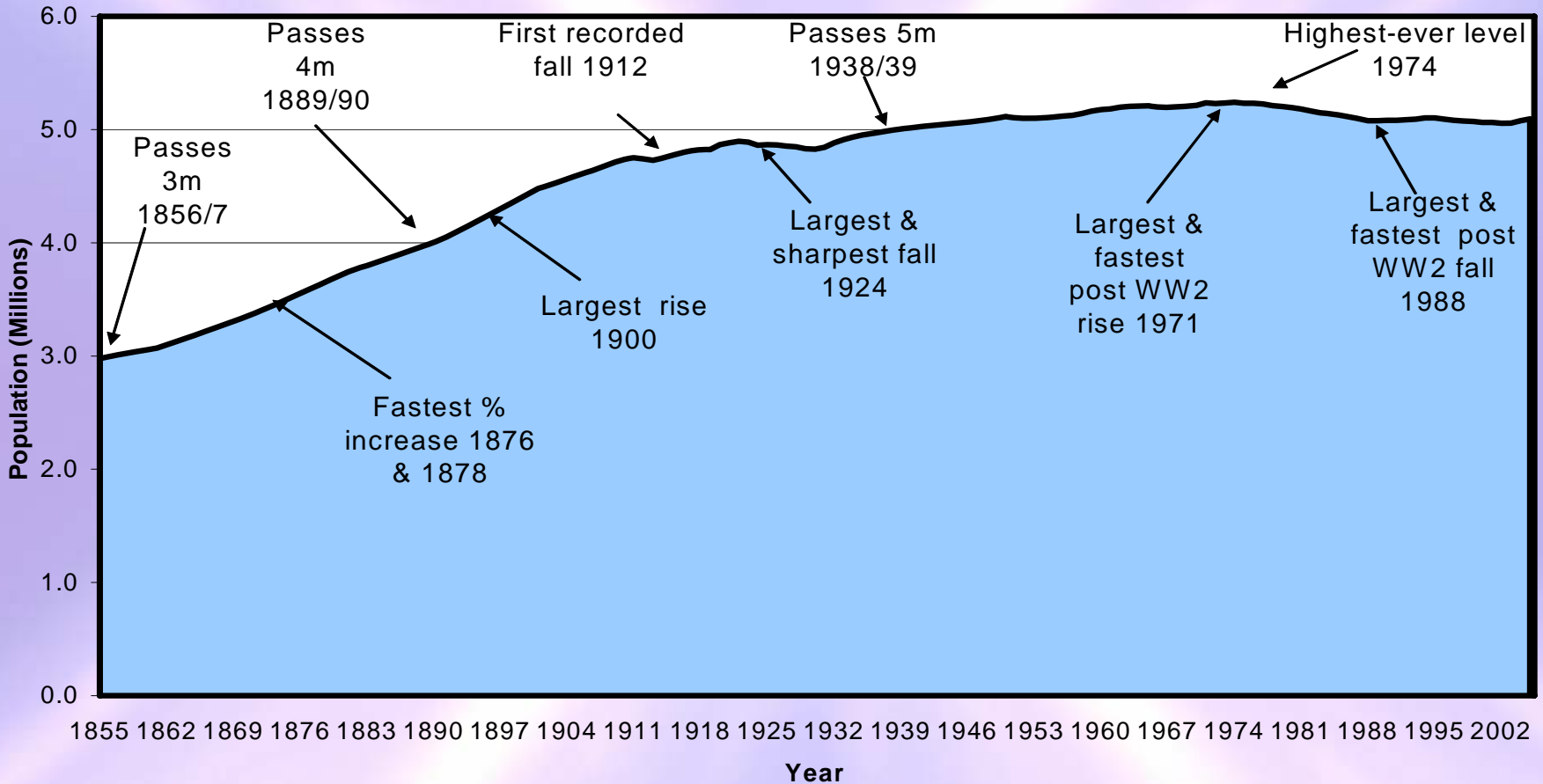
General Register Office
for
SCOTLAND
information about Scotland's people

Estimated population

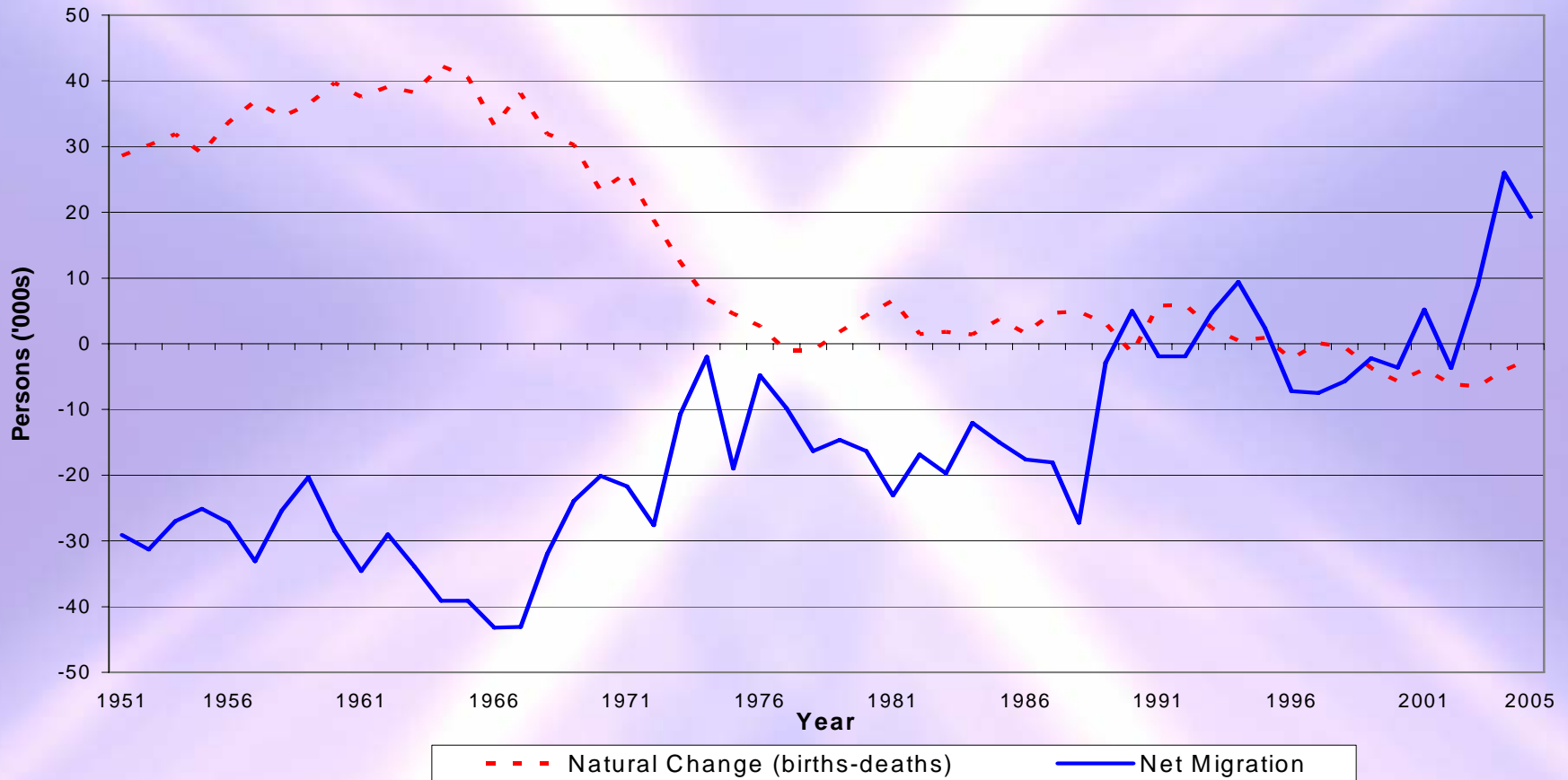
- 5,094,800 at 30 June 2005
- 16,400 up during the year
- Increase for the third year running
- 2002, 5,054,800
- Change in previous trend of slow decline



Scotland's Population 1855-2005



Natural change and net migration, 1951-2005



General Register Office
for
SCOTLAND
information about Scotland's people

Migration



General Register Office
for
SCOTLAND
information about Scotland's people

Scottish migration

	2002/3	2003/4	2004/5
• Rest of UK <i>(from NHSCR)</i>			
– In	54,300	61,900	57,300
– Out	47,300	46,400	44,800
• Overseas migration			
– In	30,500	36,300	35,400
– Out	26,400	24,600	28,100



Mid-Year Estimates Process



Migration (and other adjustments)

- Proxy Indicators
 - NHSCR (NHS Central Register)
 - CHI (Community Health Index)
- Surveys
 - IPS (International Passenger Survey)
- Other Information
 - Armed Forces
 - Home Office (Asylum Seekers)



NHSCR and CHI

- NHSCR Movements are recorded between Health Board Areas
- CHI movements allow migration to be measured below health board area



NHSCR

- Originally set up in 1939 for purpose of call-up for military service and food rationing
- Function - to maintain a register of all NHS patients on lists of general practitioners in Scotland
- To supply info to organisations in health service and for medical research



NHSCR

- Currently holds records for every patient registered, now or in the past with a Scottish GP
- Everyone born in Scotland since 1985 who have not been registered with a Scottish GP
- Patients formerly registered with a Scottish GP, who died after 1992



NHSCR dataset

- Unique NHS number
- Unique Community Health Index number
- Names
- Date of birth
- Current and previous registrations with UK health authority
- Medical flags



Community Health Index

- All patients registered with a GP in Scotland, or those in contact with health service allocated CHI number
- Since 1997 there has been a unique CHI number allocated
- Aim to use throughout health service for identification



CHI extract

- Information includes
 - Identifiers (CHI & NHS)
 - Current status
 - Age/sex
 - Health board of residence + Postcode
 - Area codes + transfer in/out dates
 - Immigrant code



NHSCR (Dumfries)

- NHSCR (Dumfries) – monthly file with details of all ‘postings’
 - Moves between health board areas
 - Cross-border England, Wales and Northern Ireland
 - Immigrants and embarkations



ONS Migration Stats

- ONS Migration statistics supply details on all migrants to England & Wales quarterly sourced from NHSCR (Southport)



Northern Ireland

- Total number of migrants to NI from Northern Ireland Health and Social Services



Community Health Index

- Annual extracts
- Compared to identify changes of address and all moves across health board boundaries



Current context

- Recent changes in health board boundaries
- Increased interest in international migration
- Checking assumptions in methodology after 4 years



Data flows for in migrants

- New patient informs GP with details of previous location
- Registered on CHI with new information and old area recorded if within UK
- Request records to be transferred from old area
- NHSCR updated
- For new patients, NHS no allocated



Data flows for out migrants

- Patient informs GP in other UK area of details of previous location in Scotland
- NHSCR(Southport) or NIHSS updated
- Change information passed to NHSCR(D)
- Reports of transfer out sent to CHI for updating
- Records transferred to new area
- Embarkation – another story

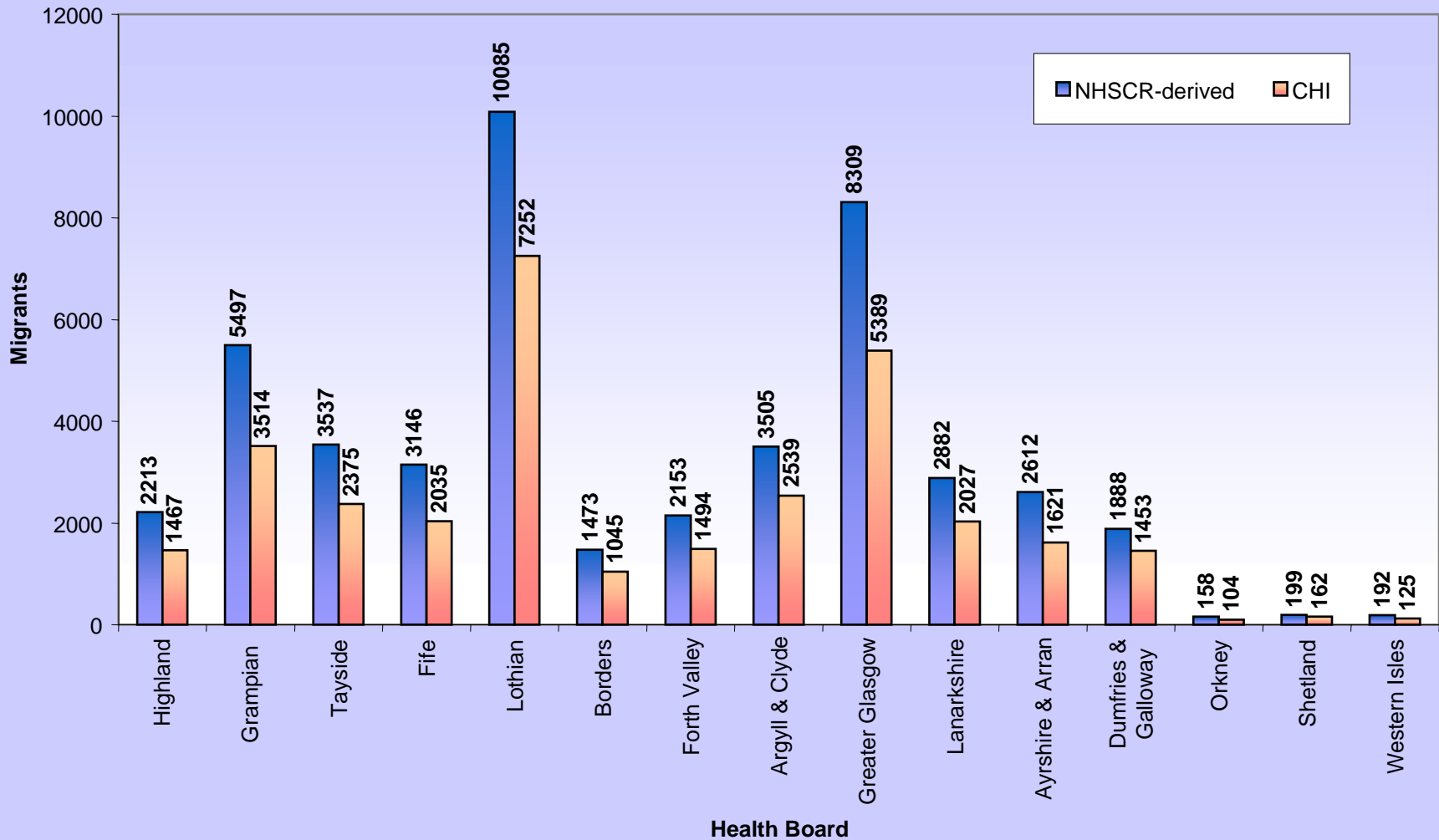


Moves to E&W

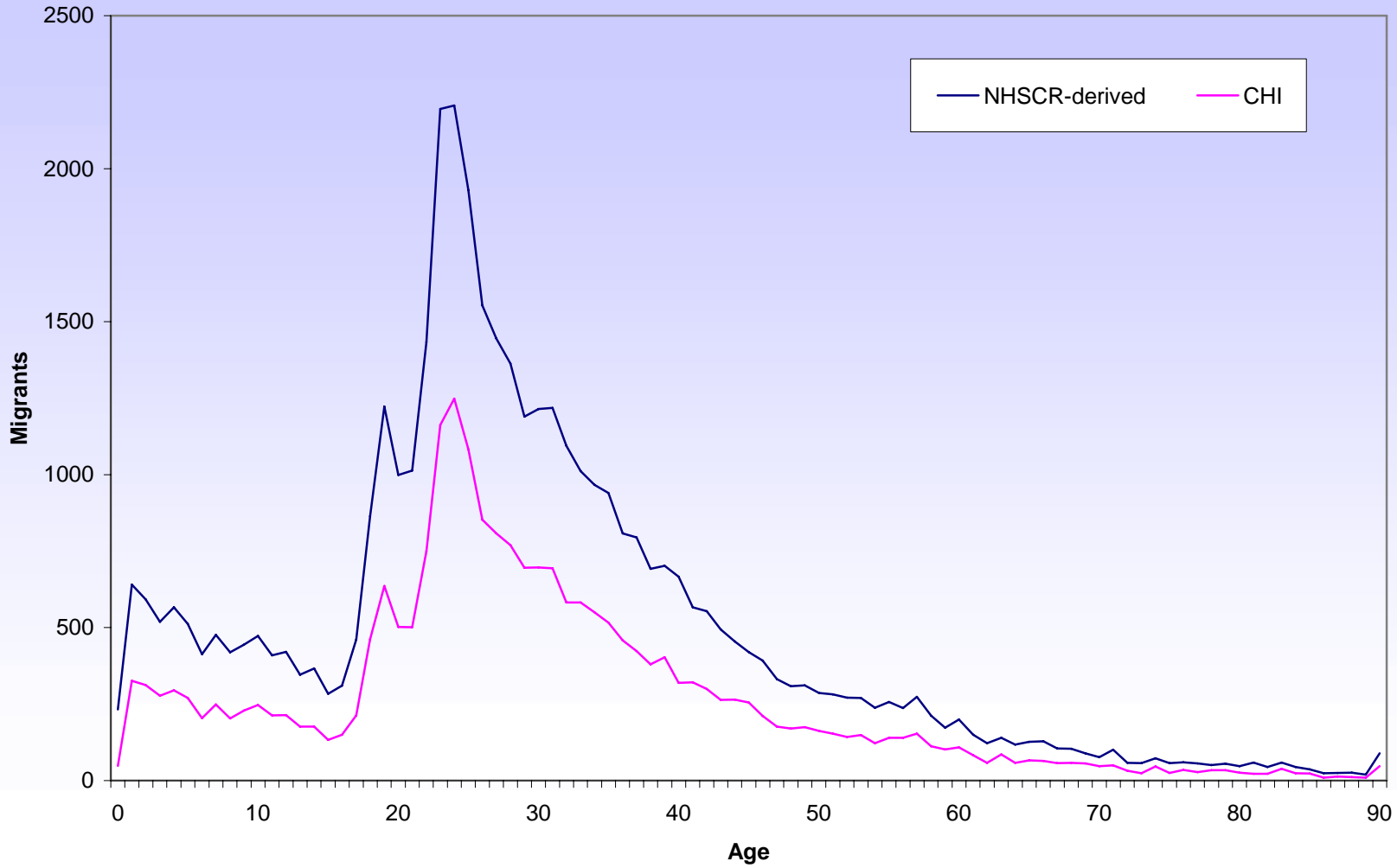
- Number of migrants to England & Wales reported by NHSCR(Southport)
 - 42400
- Number of transfers out to E&W on CHI
 - 26000



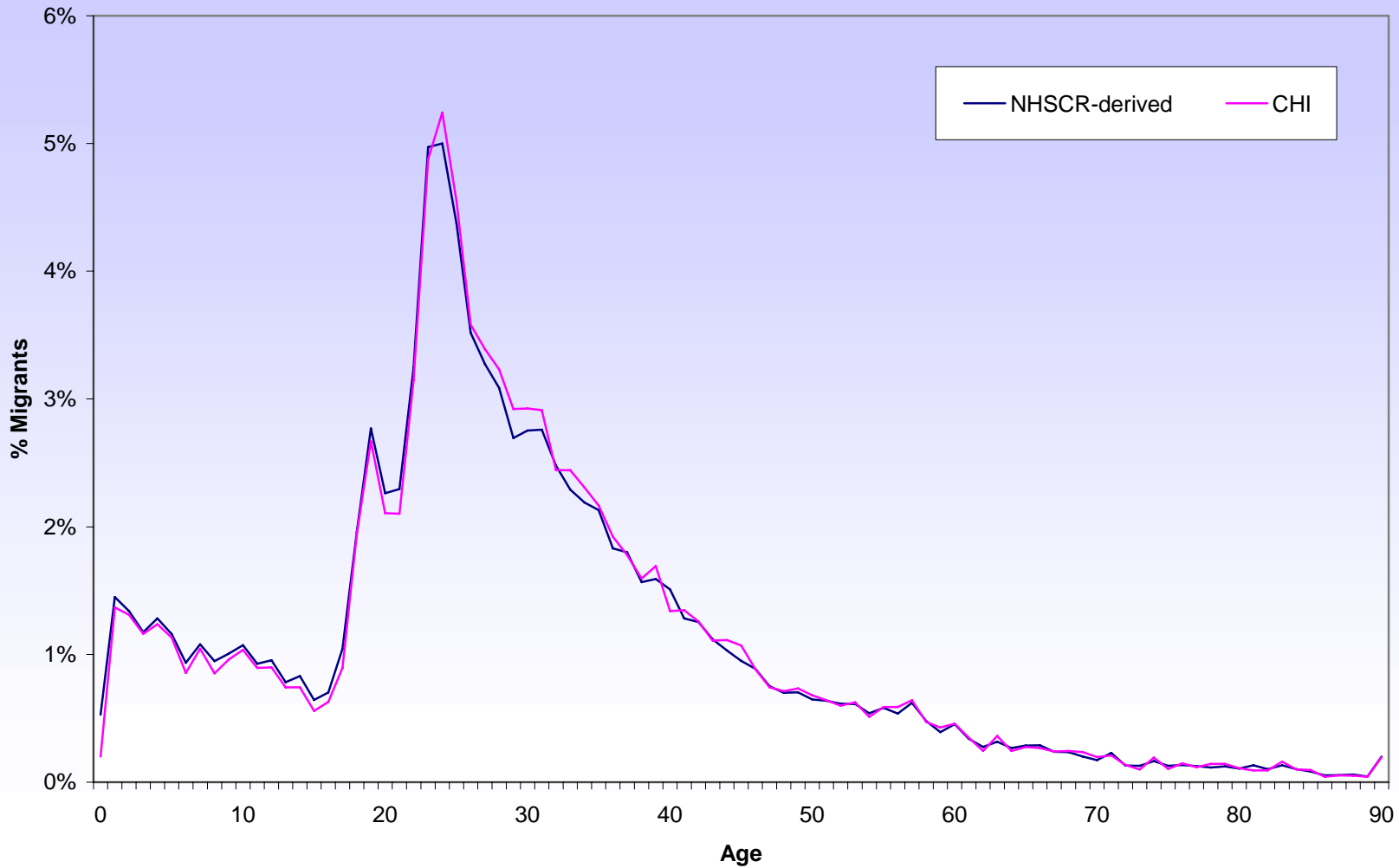
Comparison of NHSCR-derived and CHI Flows to E&W 2001-02



CHI and NHSCR-derived flows to E&W by age



Percentage age distribution of CHI and NHSCR-derived flows to E&W



Moves to E&W – Possible explanations

- Flow of information from NHSCR(Dumfries) to Practitioner services
- Impact of patients who are untraced or lost



Further work

- Case studies of sample of patients
- Transfers in from overseas
- Northern Ireland flows - was there a black hole in the Irish Sea?



Thank you

Questions?



General Register Office
for
SCOTLAND
information about Scotland's people