

Fife Population Projections

Andrew Ballingall

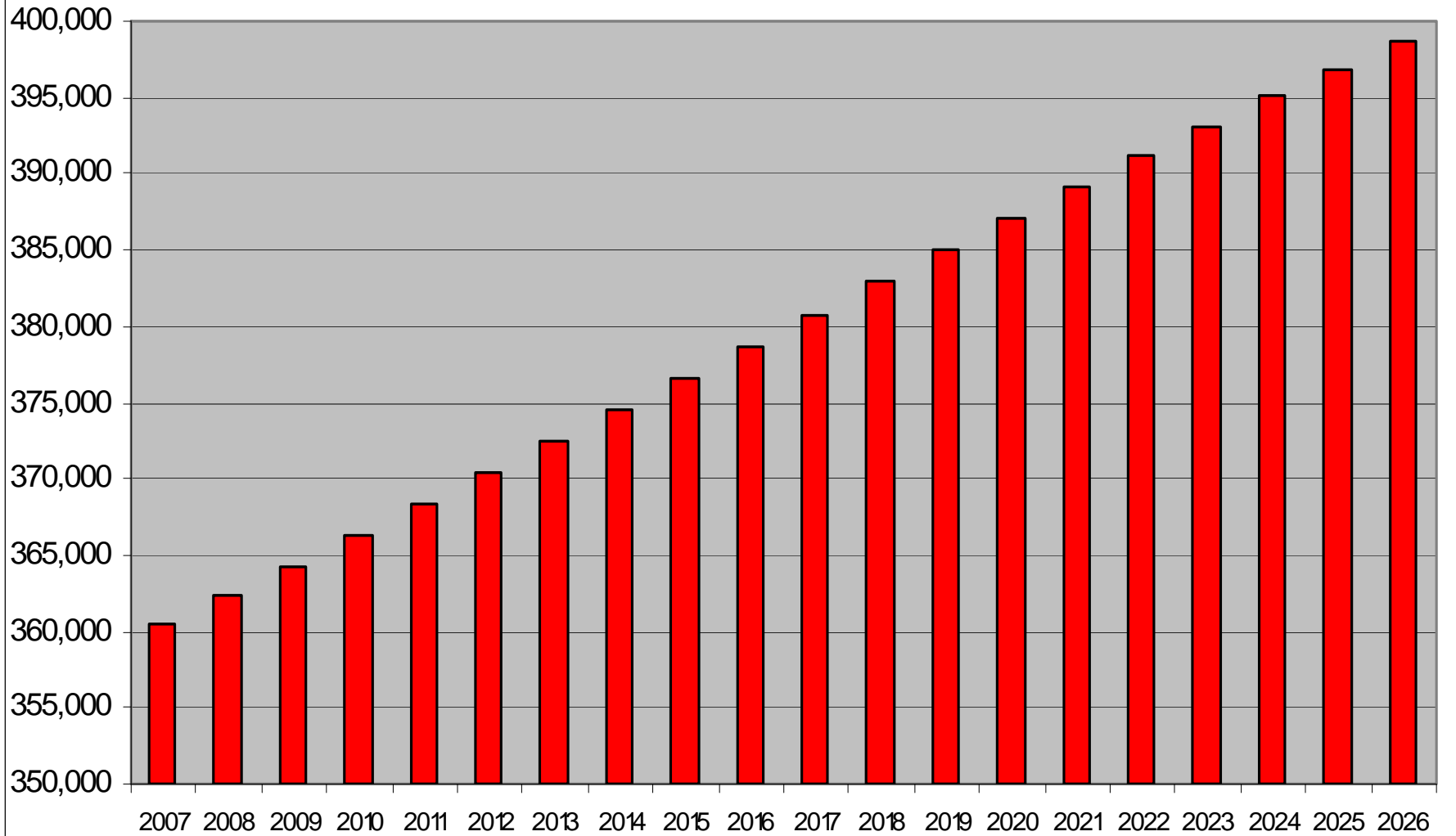
Areas to cover

- Need for sub-Fife population projections?
- Types of projections/scenarios
- Variations between scenario outputs
- Variations across Fife
- Summary of main areas of use

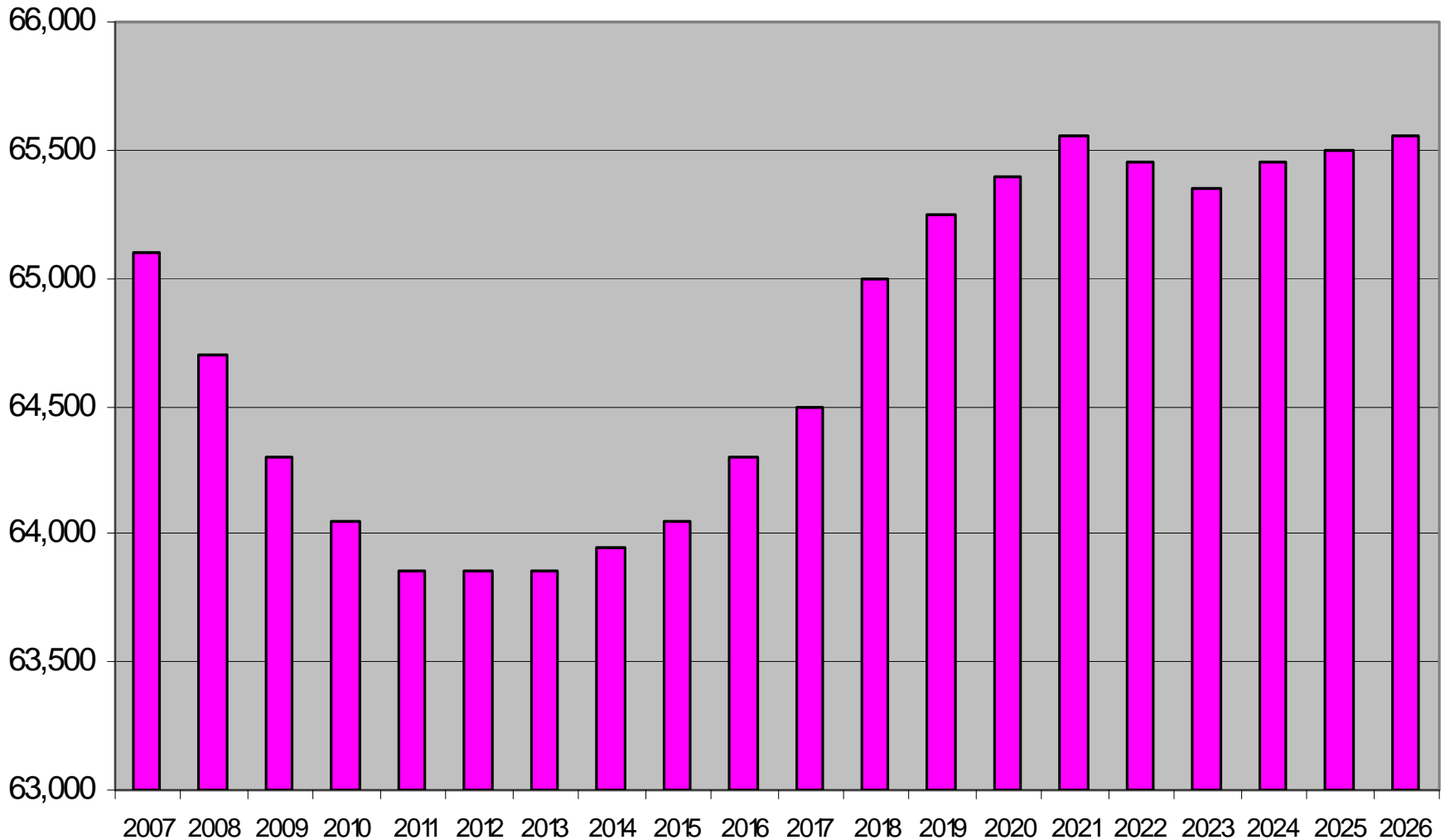
Why did we need sub-Fife Population Projections?

...g
...ent
...For
...n Valley
...ar • Kiln
...no • Ladyb
...Low Valleyfi
...Monimail • Moon
...in • Pitlessie • Pitscot
...star • Steelend • Strathkin
...pper Steelend • Wellwood • V
...y • Auchtertool • Baintown • Baicun
...oarhills • Bonnybank • Boreland • Bow of
...noe • Carnock • Cellardyke • Geres • Chance l
...Coaltown of Wemyss • Collinsburgh • Collessie • Com
...rossgates • Crosshill • Culross • Cults • Cupar • Cupar Muir • Da
...unimo • Dunshalt • Dura Den • Dysart • Earisferry • East Wemyss • Edentoy
...auchie • Gateside • Gauldry • Giffordtown • Glencraig • Glenrothes • Gowkhal • Grang
...rroths • High Valleyfold • Hill of Peck • Hillend • Inverkeithing • Jarcroft • Kelso • Kewbank • Kenn

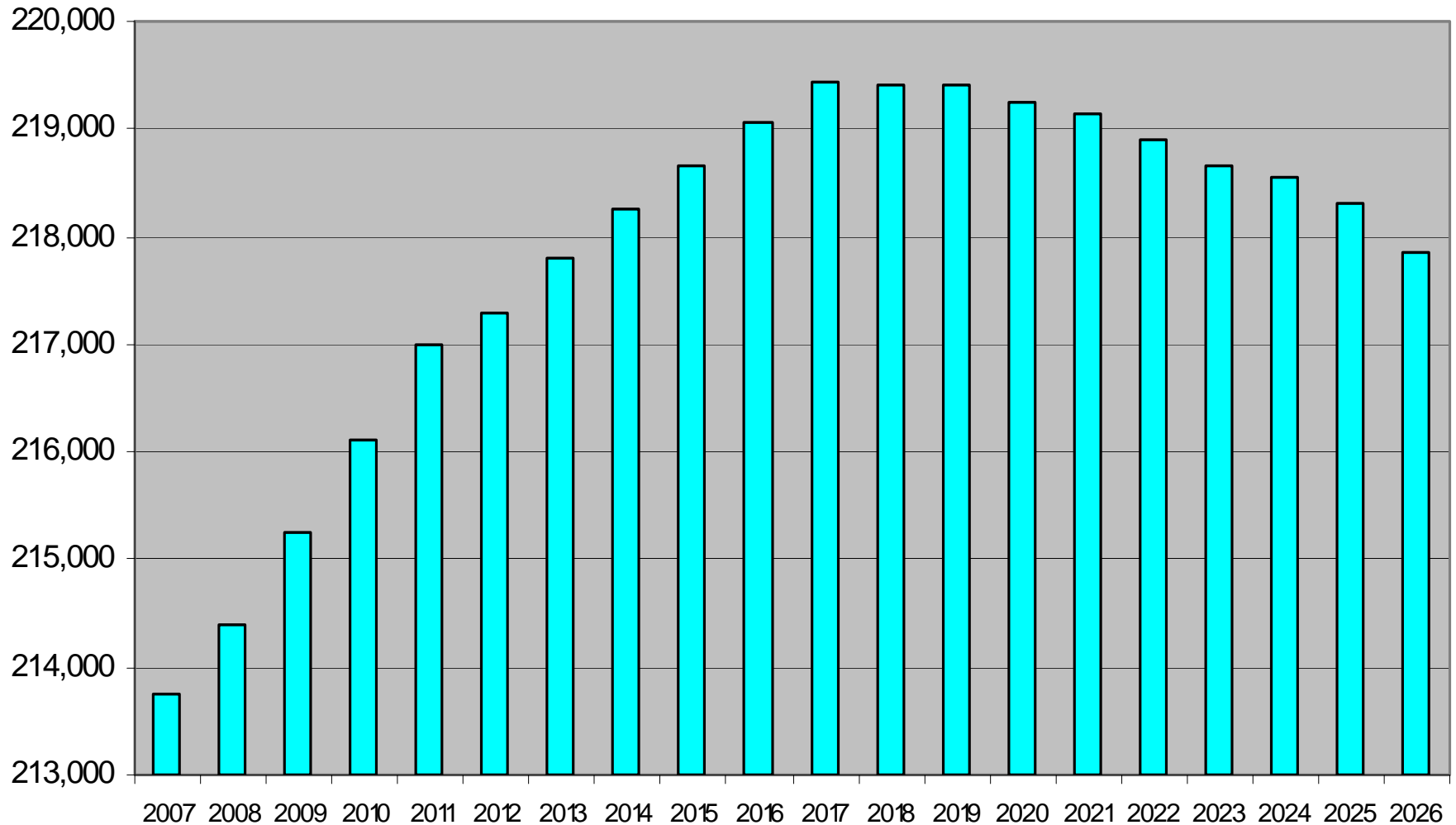
Population Projections - Fife - all ages



Population Projections - Fife - ages 0-15



Population Projections - Fife - Working Ages



Main reasons for sub-Fife figures

- Most council services are delivered at a local level
- Need data on potential users at a local level
- Need to know who these people are (age, gender)
- Need to know where they are likely to be (location)

What did we do?

- Lack of expertise/resources in-house
- In conjunction with GROS commissioned Manchester University to produce sub-Fife population figures
- Decided on Ward as geography to use
- Single year ages and gender to 2026
- Household numbers and composition

Two types of projections

- Migration-led population projections
- Dwellings-led population projections

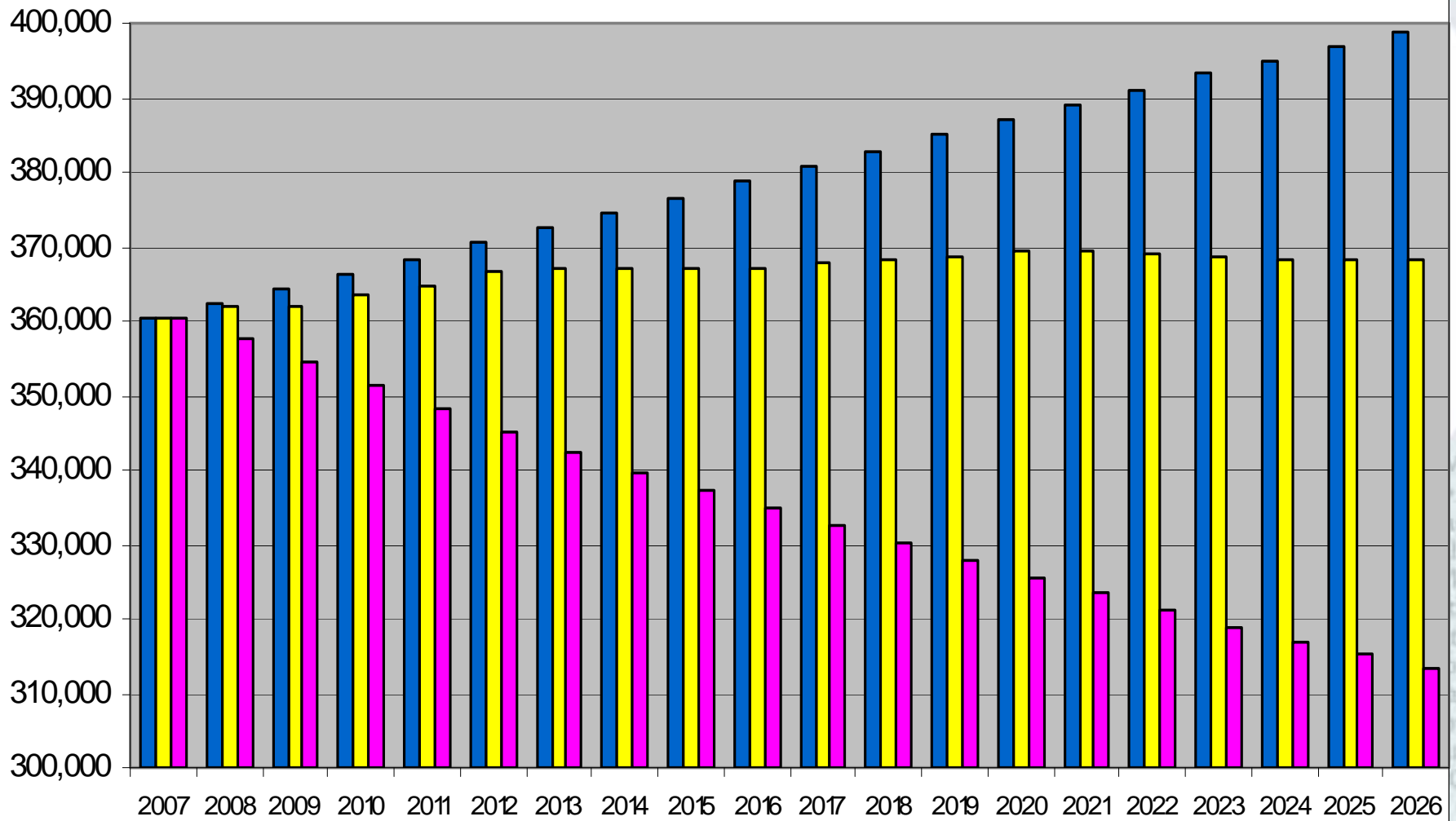
Migration-led projections

- Expected population based on recent past trends (2001-2007)
- Births/deaths at datazone from mid-2001
- Fertility and mortality schedules of age specific rates
- Migration schedules of age specific rates

Dwellings-led projections

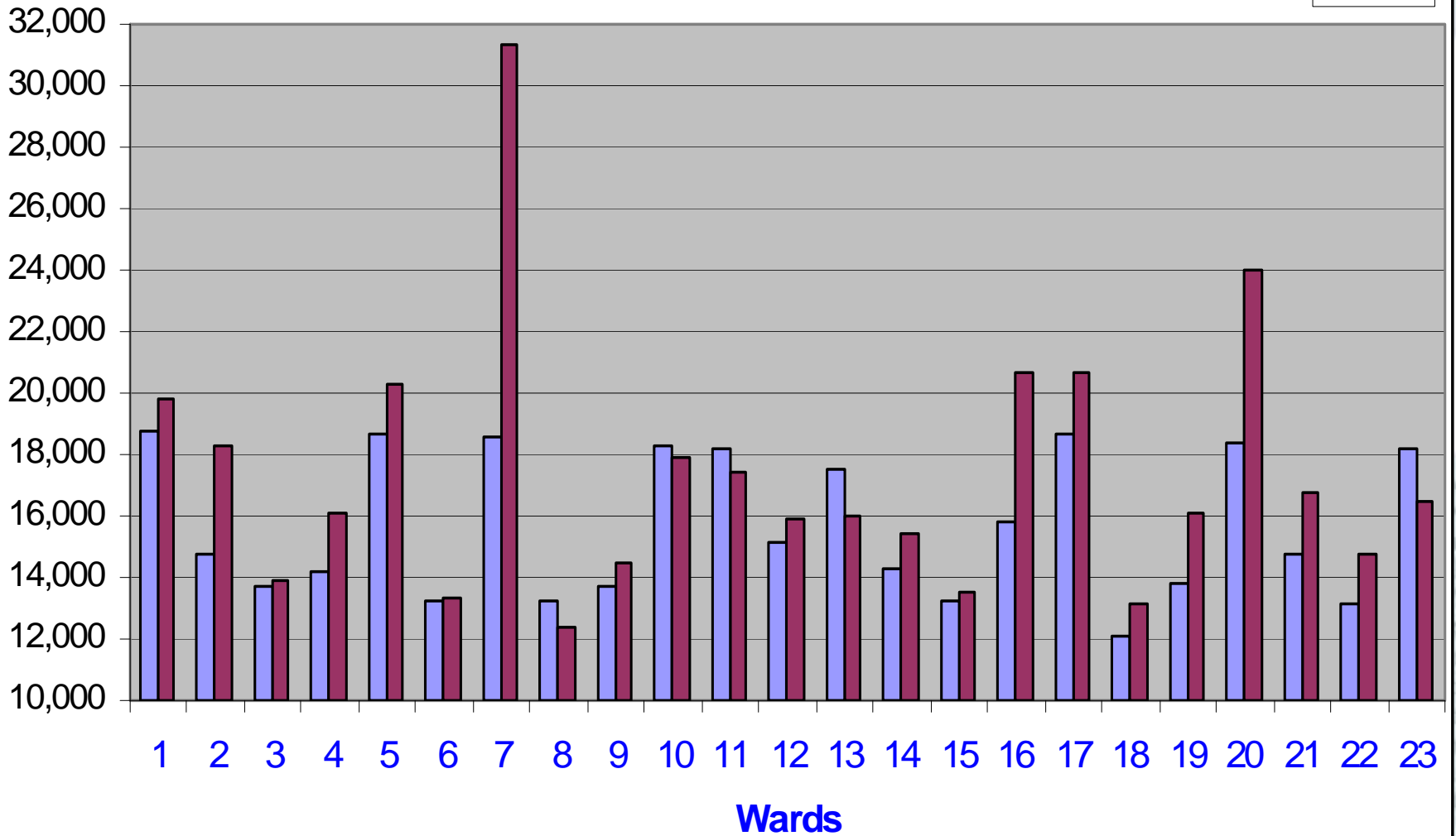
- Two scenarios
- Scenario 1 – based on recent and anticipated future house-building
- Scenario 2 – based on zero dwellings
(assumes capacity has been reached)

Population Projections - Three Scenarios



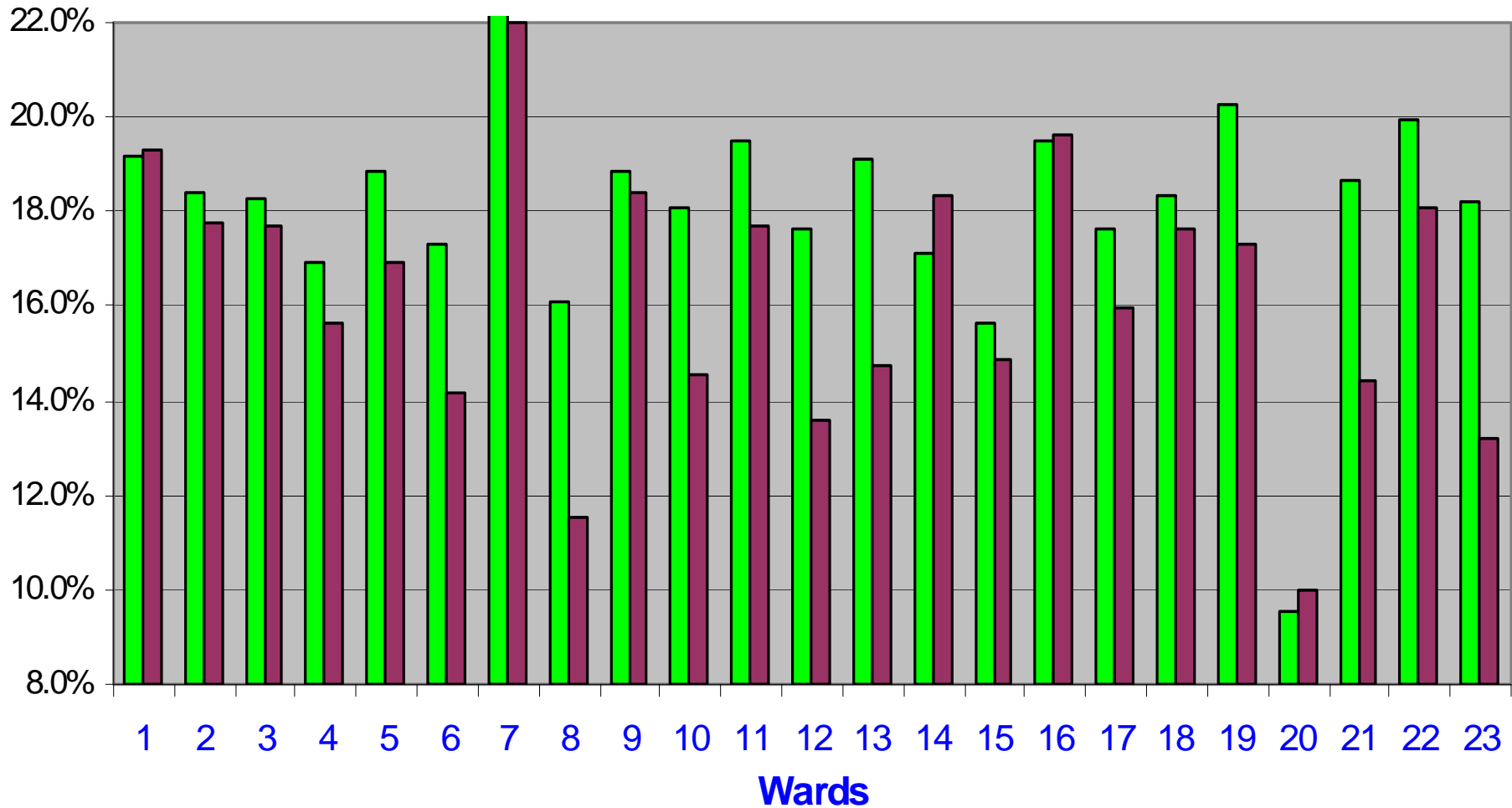
Migration-led Population Projections - 2007 & 2026

2007
2026

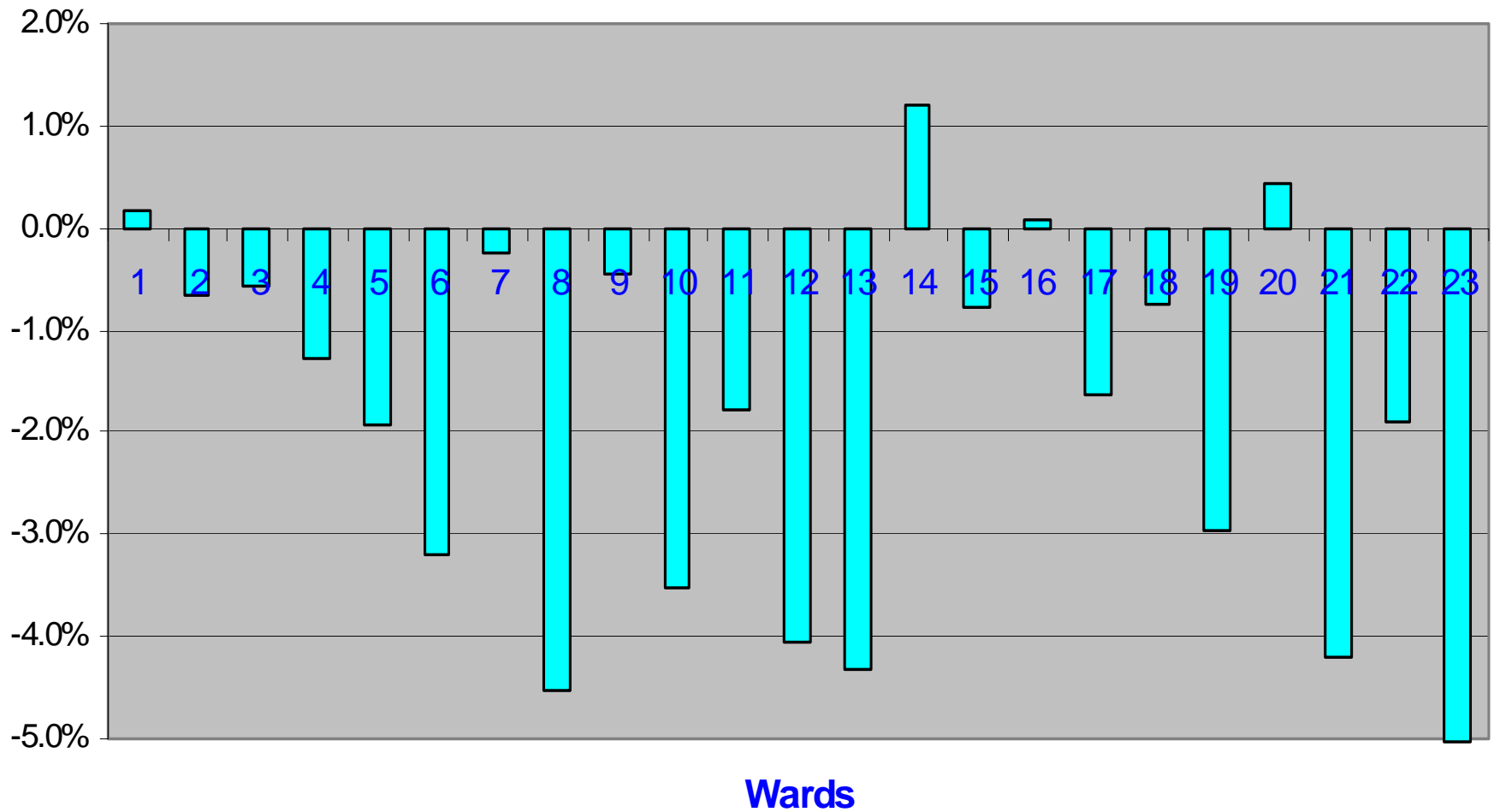


Migration-led Population Projections % aged 0-15 - 2007 & 2026

2007
2026

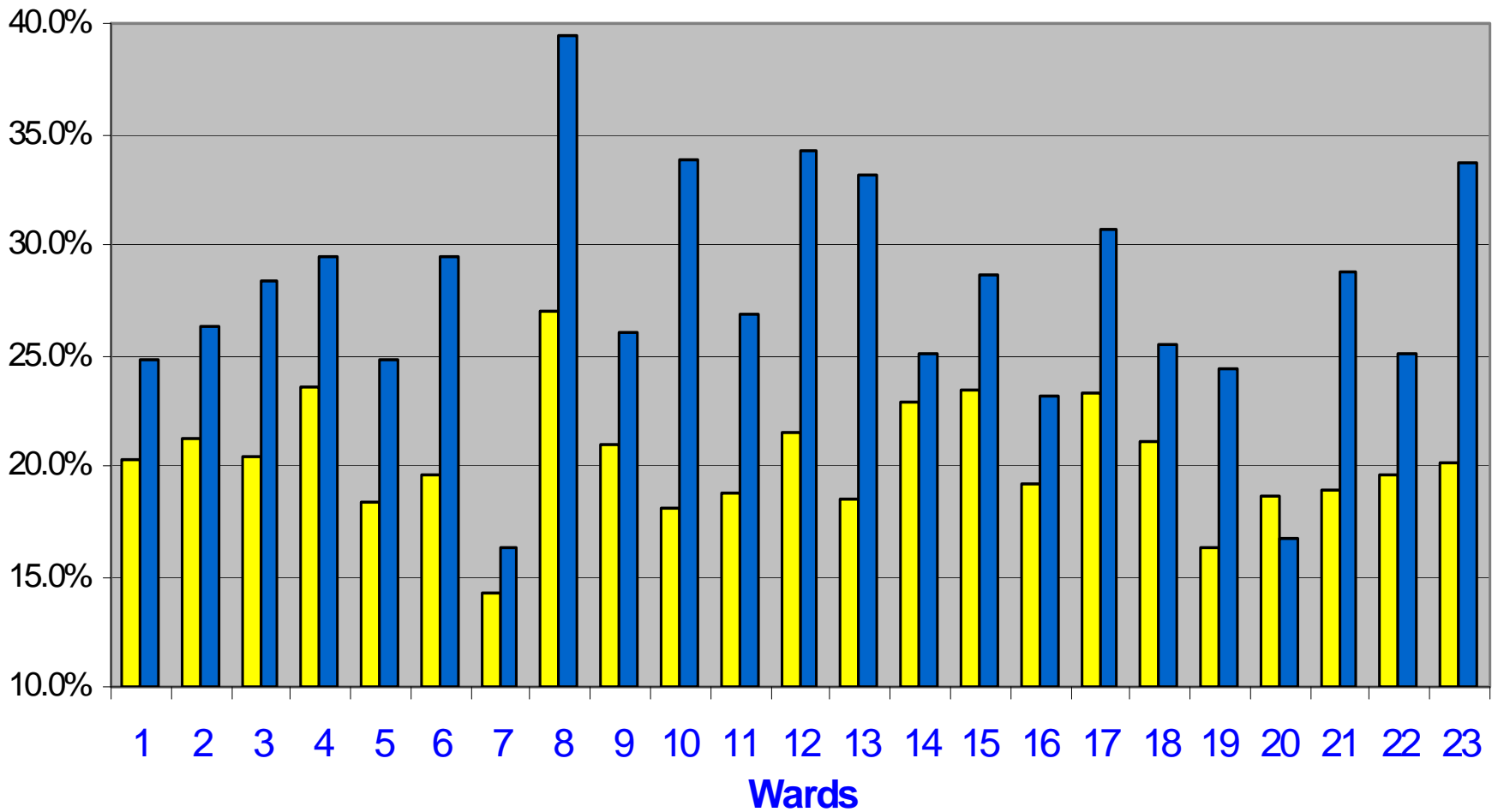


Migration-led Population Projections % change in 0-15 ages - 2007 & 2026

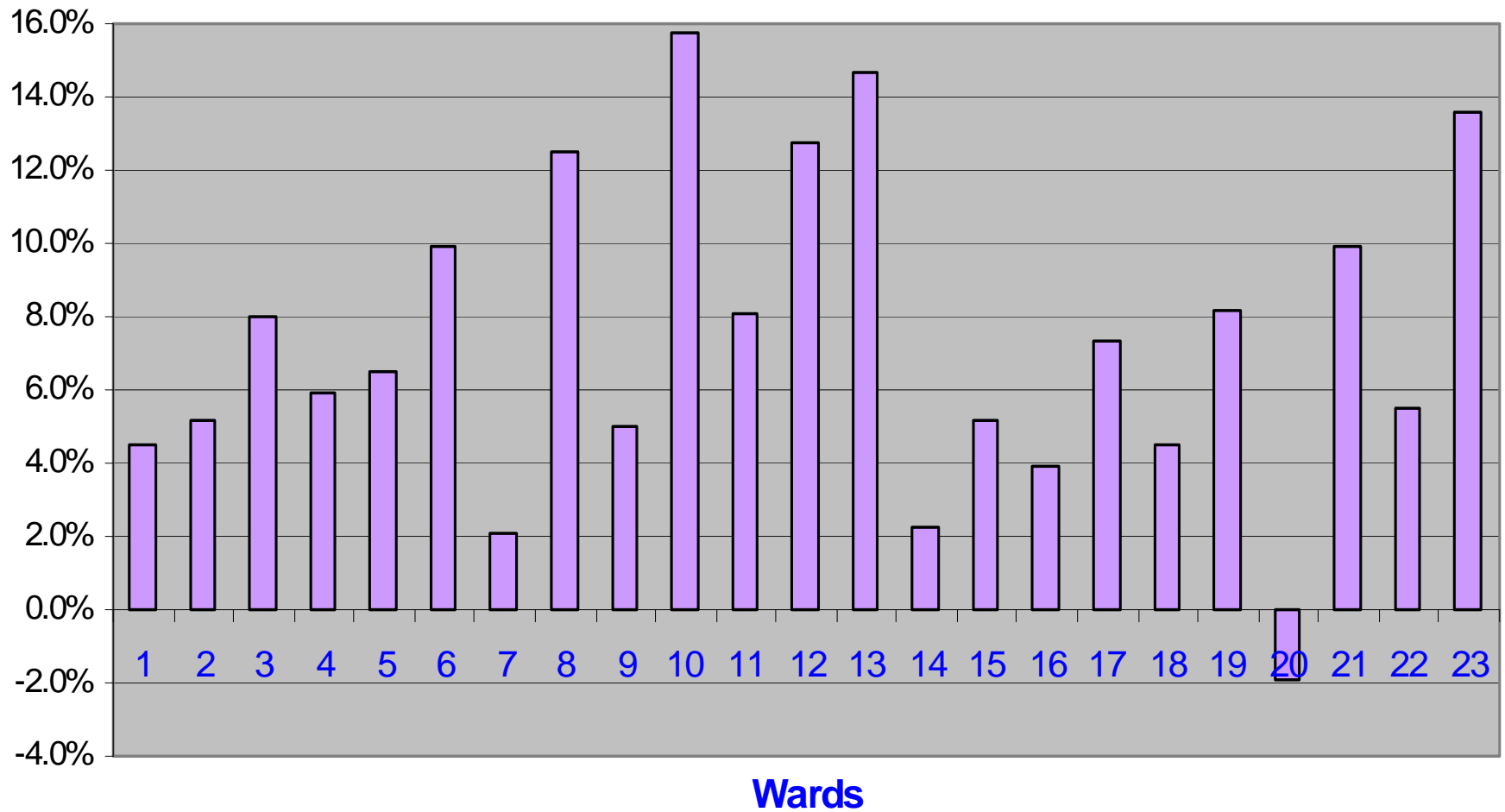


Migration-led Population Projections % Pensionable Age - 2007 & 2026

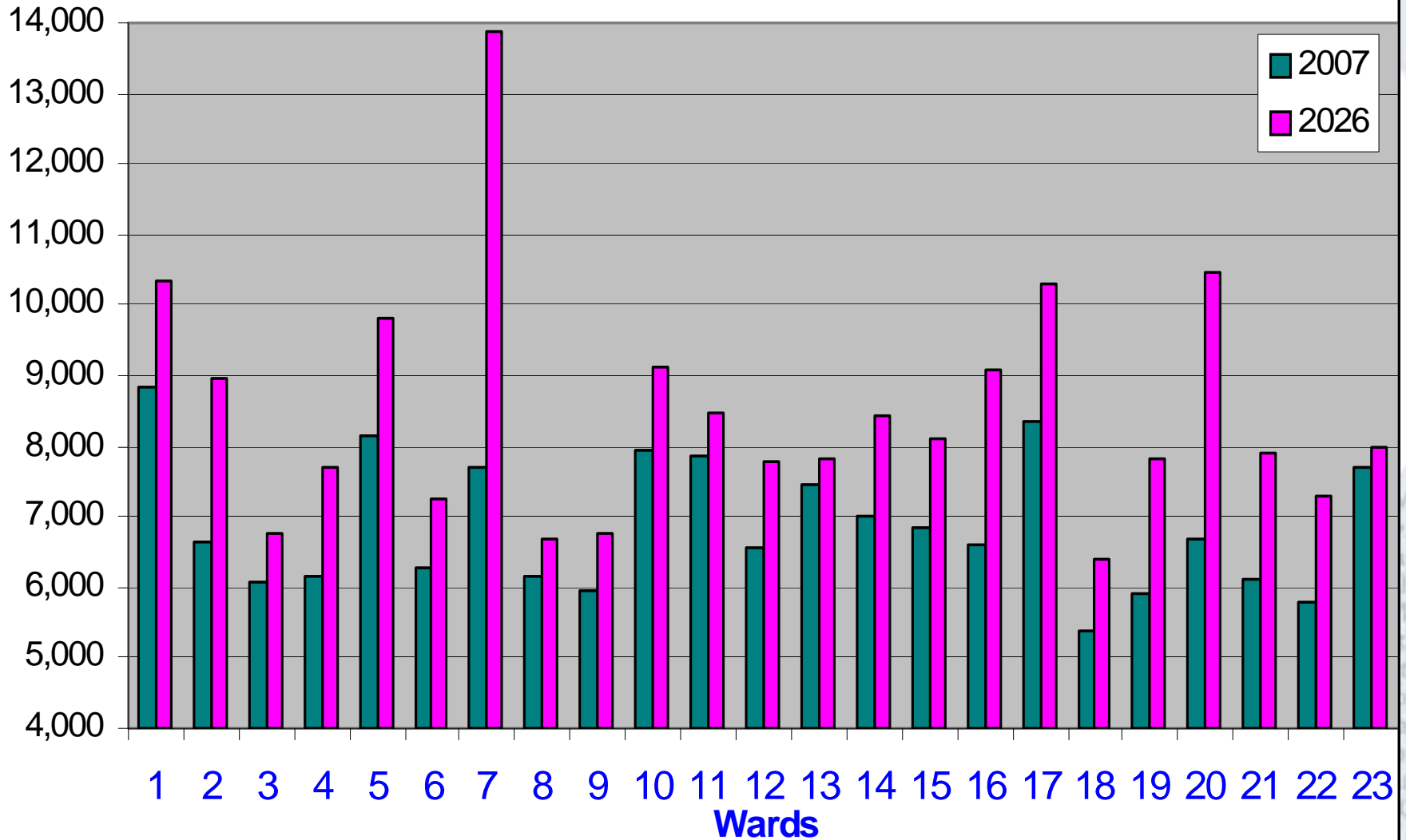
2007
2026



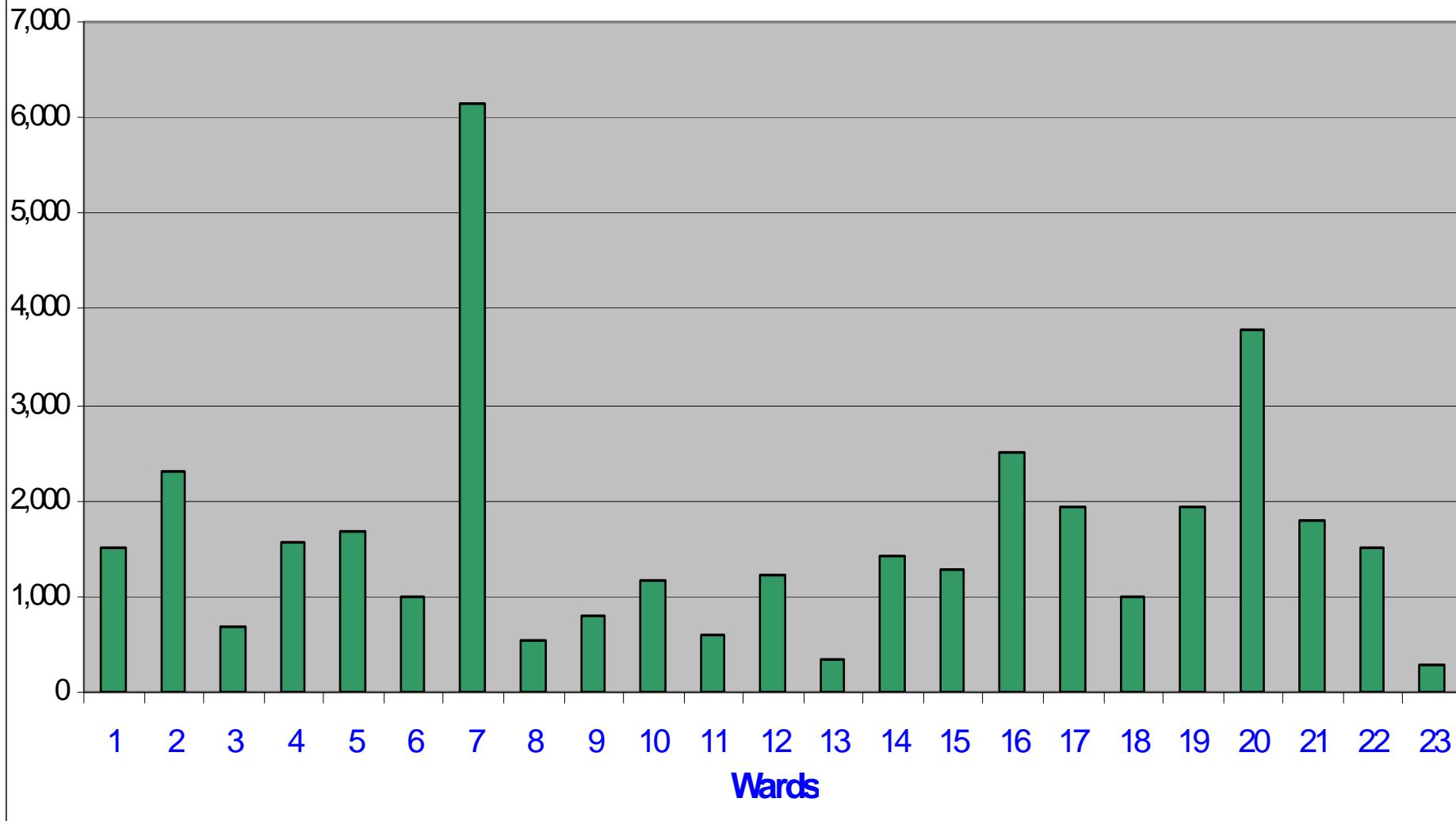
Migration-led Population Projections Change in % of Pensionable Age - 2007-2026



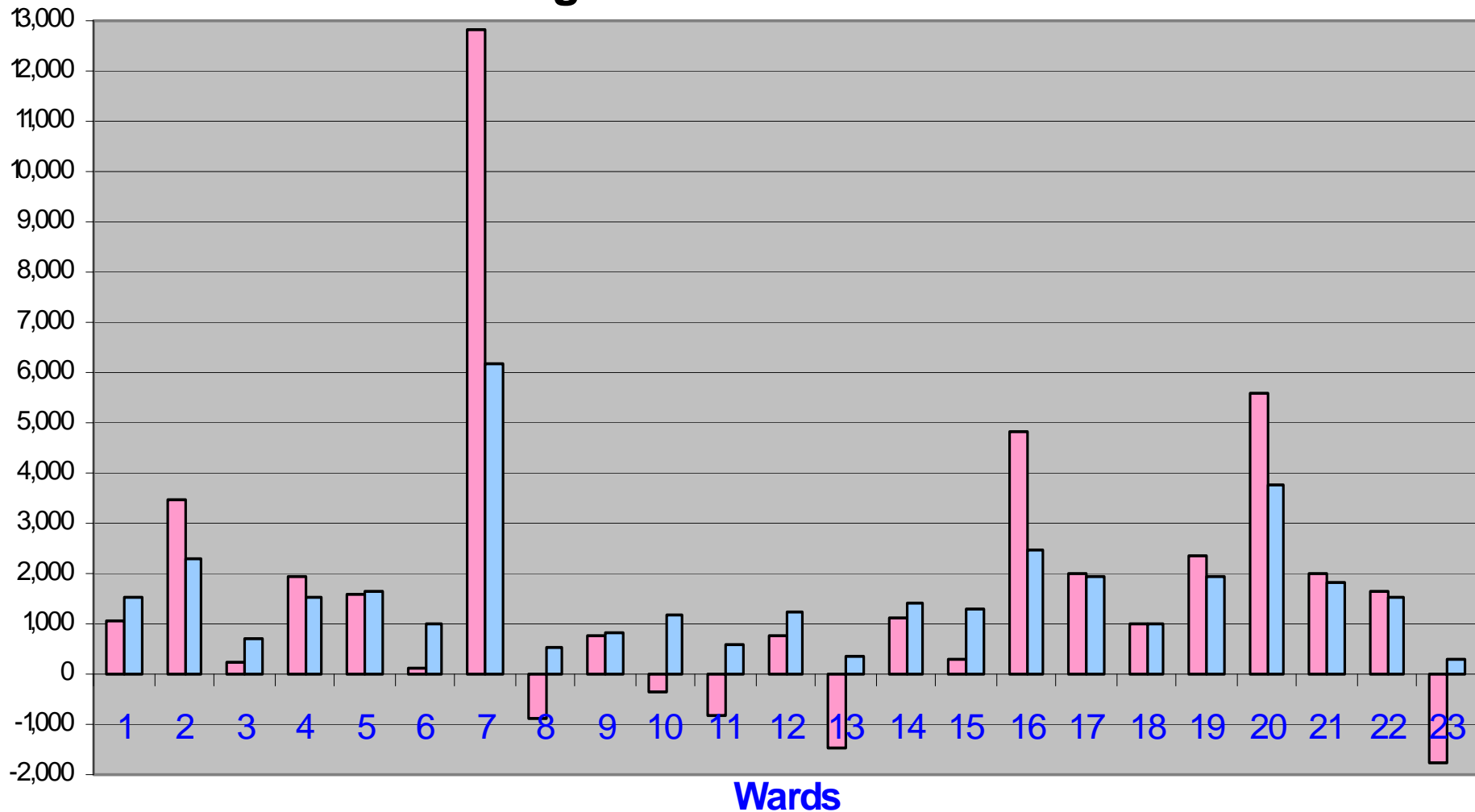
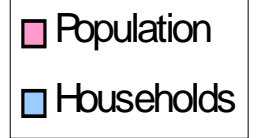
Migration-led Household Projections - 2007 & 2026



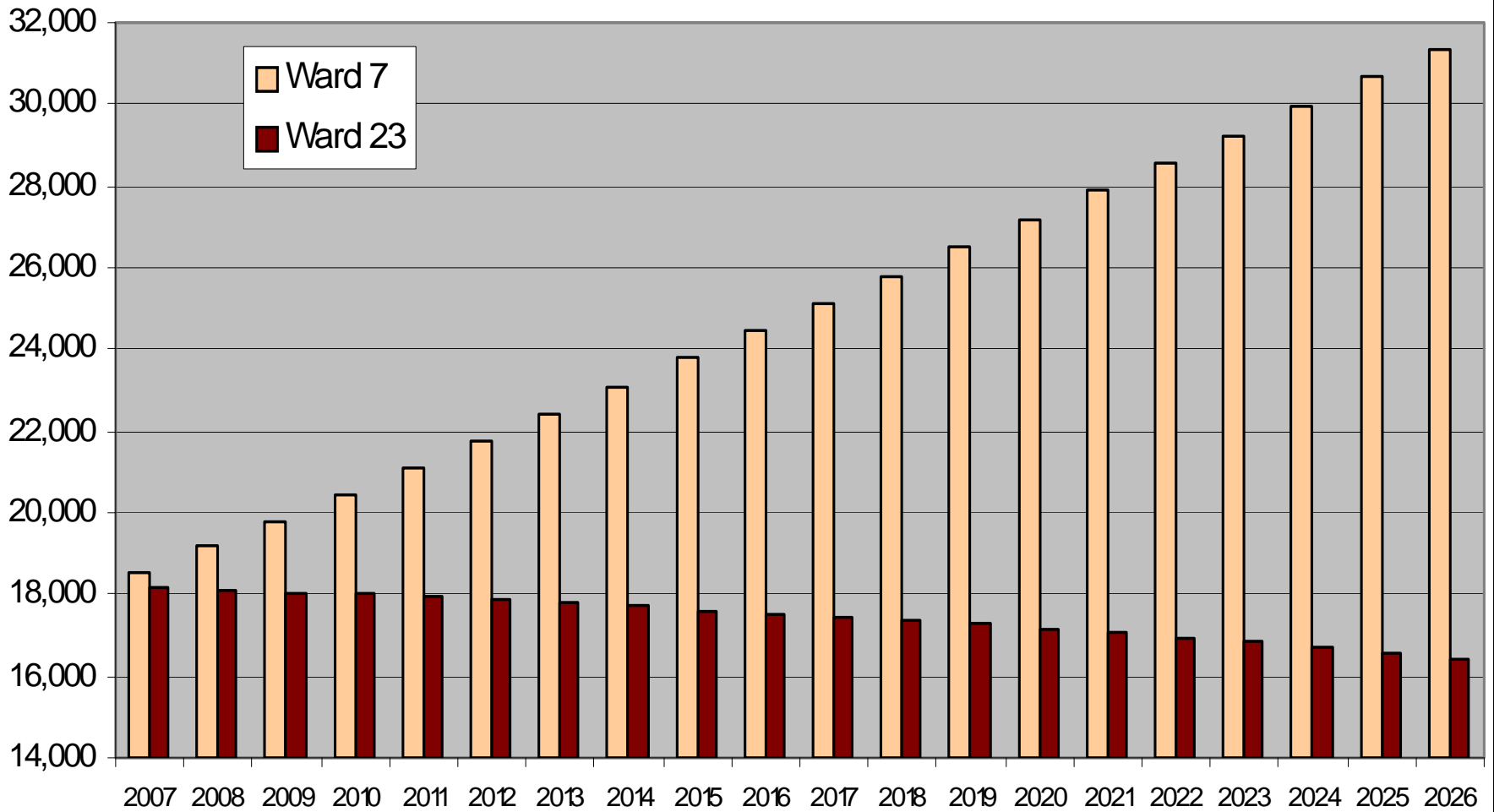
Migration-led Household Projections Change - 2007-2026



Population and Household Projections Change in number - 2007-2026



Population Projections - Highest increase and decrease in Ward Populations - 2007-2026



Summary of main areas of use

- Education services – where to build schools
- Social Work – service planning - particularly care for older people
- Health Services – likely future need (volume/location)
- Planning – structure and local plans
- Housing – future need/demand