

# Using And Improving Population And Household Statistics Seminar

## DEVELOPMENTS IN HOUSEHOLD INFORMATION

**Martin Macfie,  
General Register Office for Scotland  
30 October 2009**



**General Register Office  
for  
SCOTLAND**  
*information about Scotland's people*

# Outline of presentation

1. **Reasons for investigating alternative sources of household statistics**
2. **Corporate Address Gazetteers (CAGs)**
3. **OneScotland Gazetteer**



# Statistics currently published

## Estimates of Households and Dwellings

- A combined publication- contains local authority (LA) and small-area statistics on households and dwellings
- Based on **Council Tax** systems which could be abolished
- What are dwellings and households?



# Reasons for investigating alternative sources of household statistics

- Currently, we base most of our statistics on Council Tax records
- Council Tax could be abolished after next Scottish Parliament election (2011) - we will lose most of our household data
- Also as an alternative to Census
- To improve our currently published statistics



# Two main approaches to producing household statistics

- Count **people** and address or Unique Property Reference Number (UPRN) – e.g. Electoral Register
- Count residential **address** – e.g. Corporate Address Gazetteer  
*(Households ≈ All dwellings – (vacant dwellings + Second homes))*



# Summary findings from Electoral Register

- Broadly fine as a source of occupied dwellings, but with missing data in most data zones
- Best for towns and rural areas
- Worst for deprived data zones in large urban areas
- Issues with quality of data in some areas

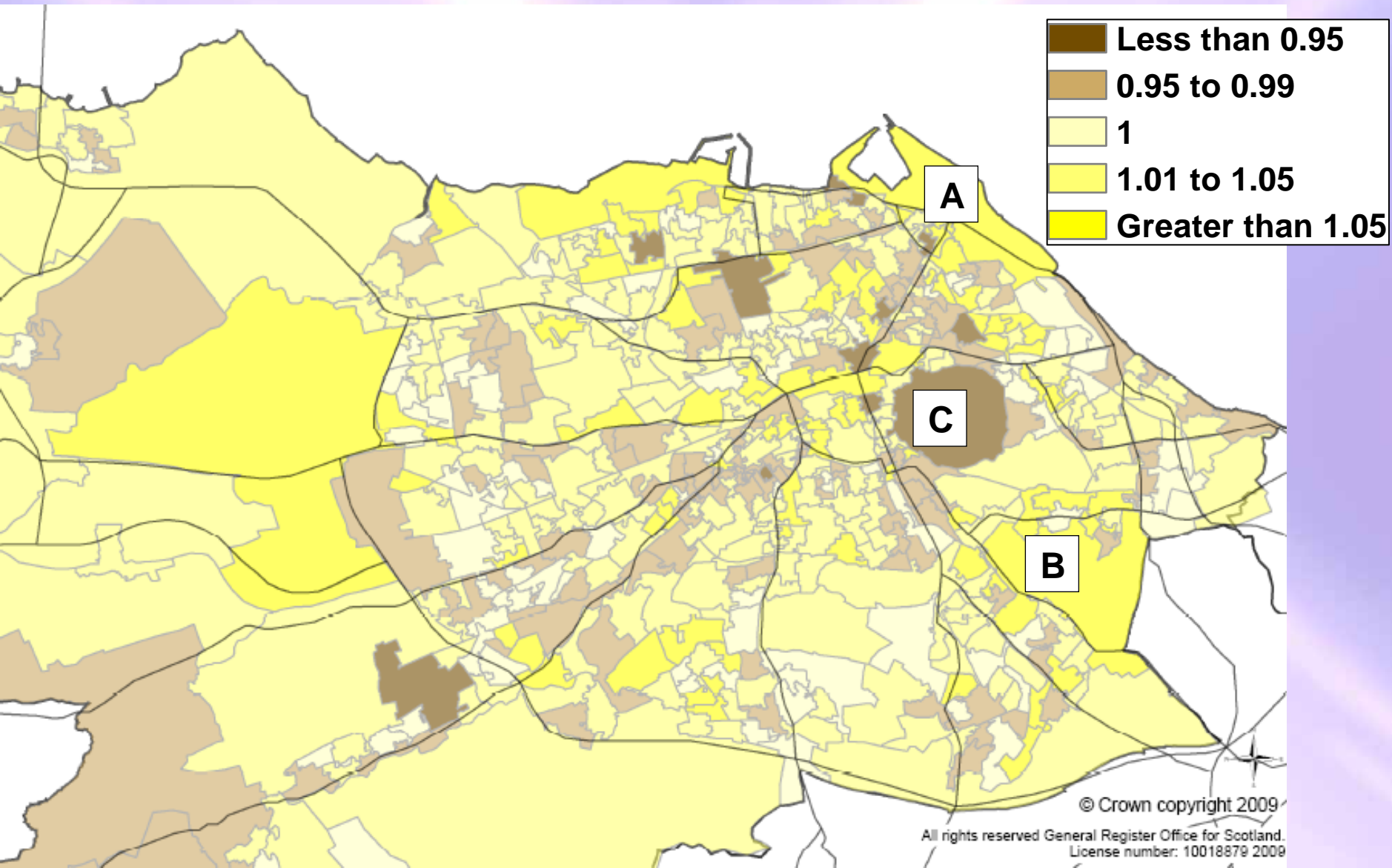


# Corporate Address Gazetteers (CAGs)

- Intended to be a combination of all different address lists that each local authority holds.
- Contains information on residential properties
- No information on occupied and vacant dwellings
- Received CAG directly from City of Edinburgh Council



# Addresses on the CAG as a proportion of all dwellings in Edinburgh, 2009





# OneScotland Gazetteer

- Consists of a Corporate Address Gazetteer (CAG) from each LA
- Still doesn't contain information on residential properties yet
- We can access data for most LAs
- Data quality improving all the time



# Summary of alternative sources of household statistics

## ELECTORAL REGISTER

- Info on occupied dwellings, but missing data in most neighbourhoods

## CORPORATE ADDRESS GAZETTEER

- Better coverage of residential properties, no info at the moment on occupied and vacant dwellings



# Any questions?

- We would welcome any comments or suggestions- please contact Household estimates and projections using our contact form <http://www.gro-scotland.gov.uk/contacts/contact-form.html>

Telephone: (0131) 314 4299



General Register Office  
*for*  
SCOTLAND  
*information about Scotland's people*