

# Improving access to migration data

---

## Local area migration reports



General Register Office  
*for*  
**SCOTLAND**  
*information about Scotland's people*

Alasdair Anthony

# Background

- Migration is an increasingly important part of population change
- Quantifying migration is important for service planning and delivery
- Migration is difficult to measure...

# Background

- Migration is an increasingly important part of population change
- Quantifying migration is important for service planning and delivery
- Migration is difficult to measure...But there are many data sources that can act as migration indicators

# Measuring migration

- Unlike births and deaths, no all-inclusive system to monitor movements of people in and out of UK
- Annual estimates produced largely from NHSCR (within UK) and IPS (international)
- Other sources can also be used to identify trends in migration

# Local area migration reports

- 1) Bring a range of migration indicators together
- 2) Clarify definitions, limitations and uses for each indicator

Ultimately

provide a more current and fuller picture of migration trends for local areas

# Report structure

- 1) GROS migration estimates
  - Part of the annual population estimates
- 2) Other indicators of migration
  - Neighbouring LAs grouped together to allow initial comparisons
- 3) Description of sources
- 4) Strengths and limitations

# Report content

- Data provided at Local Authority level where possible
- Focussed on overseas migration
- Designed to be accessible – charts and summary tables
- Describes **what** data shows, **how** it was compiled, **where** available

# What's in the reports?

## 1) GROS migration estimates

- Recent migration summary
- Historical net total migration
- Migration outside Scotland
- International migration
- Migrant age-profile



# What's in the reports?

## 1) GROS migration estimates

- Recent migration summary
- Historical net total migration
- Migration outside Scotland
- International migration
- Migrant age-profile

## 2) Other indicators of migration

- NHS registrations from overseas
- Country of birth
- Worker Registration Scheme (A8)
- National Insurance Number allocations
- Mothers' country of birth
- Pupil census

## 1.1 Tayside recent migration summary - mid-2007 to mid-2008

		SCOTLAND		Angus		Dundee City		Perth & Kinross	
		Total	rate per 1000†	Total	rate per 1000	Total	rate per 1000	Total	rate per 1000
In	Total	94,165	18	4,274	39	7,091	50	7,515	52
	within Scotland	n/a	n/a	2,963	27	3,784	27	3,879	27
	Rest of UK	55,665	11	874	8	1,556	11	1,647	11
	Overseas	38,500	7	437	4	1,751	12	1,989	14
Out	Total	74,189	14	3,750	34	6,801	48	5,553	39
	within Scotland	n/a	n/a	2,583	23	4,183	29	3,382	23
	Rest of UK	43,389	8	697	6	1,482	10	1,109	8
	Overseas	30,800	6	470	4	1,136	8	1,062	7
Net	Total	19,976	4	524	5	290	2	1,962	14
	within Scotland	0	0	380	3	-399	-3	497	3
	Rest of UK	12,276	2	177	2	74	1	538	4
	Overseas	7,700	1	-33	0	615	4	927	6

**Table 1** GROS official components of migration 2007/8. († The rate per 1000 for total migration at Scotland level cannot be compared with the Council level rate per 1000 total migration as the Council level rate includes within Scotland moves.)

- This table shows the migration flows to Tayside Councils, split by within Scotland, rest of UK and overseas migration.
- These data were extracted from Table 5 “Components of migration by administrative area” of GROS Mid-Year Population Estimates Scotland and represent GROS official estimates of Council area migration.
- The mid-2006-07 period was the first time that this data had been published. This data is now published annually as part of the GROS mid-year population estimates for Scotland. The equivalent data for previous years is not available as a different processing was used that did not distinguish between overseas and rest of UK migration.
- Within UK migration (i.e. within Scotland and Rest of UK) is based on GP registration moves recorded by the NHS Central Register (NHSCR). Movements to/from the armed forces are included in the figures shown in Table 1.
- The primary source for overseas migration is the International Passenger Survey.

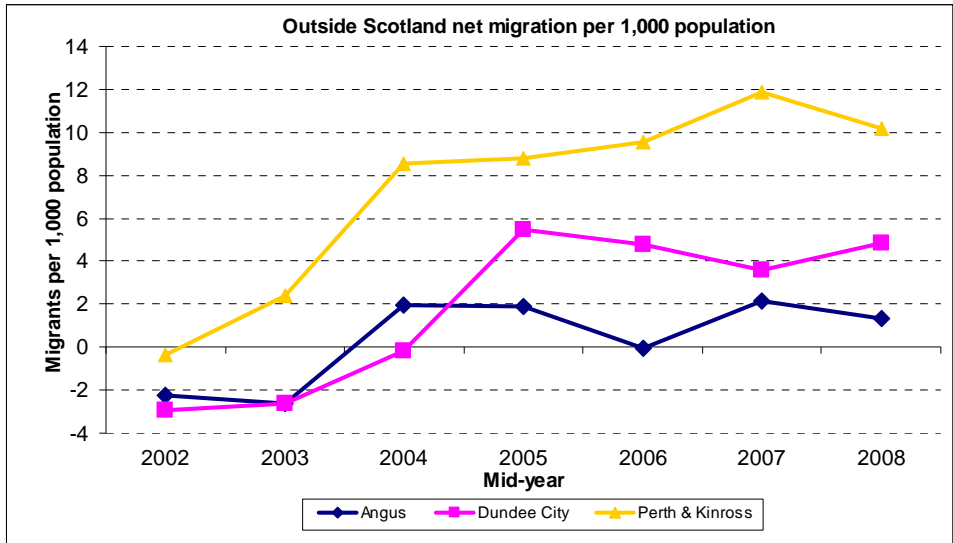


Figure 2a Net outside Scotland migration for Tayside Councils, per 1,000 population (source: GROS)

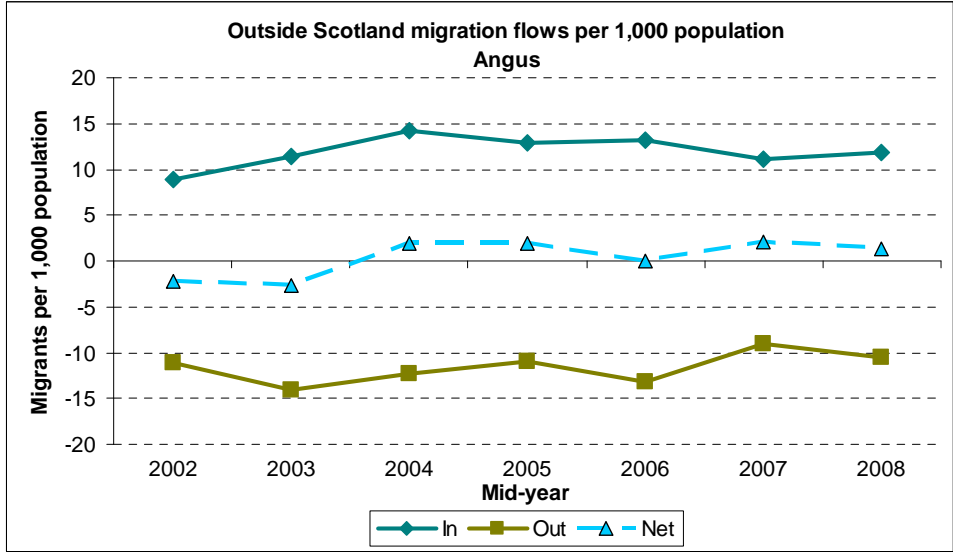


Figure 2b Outside Scotland migration flows for Angus, per 1,000 population (source: GROS)

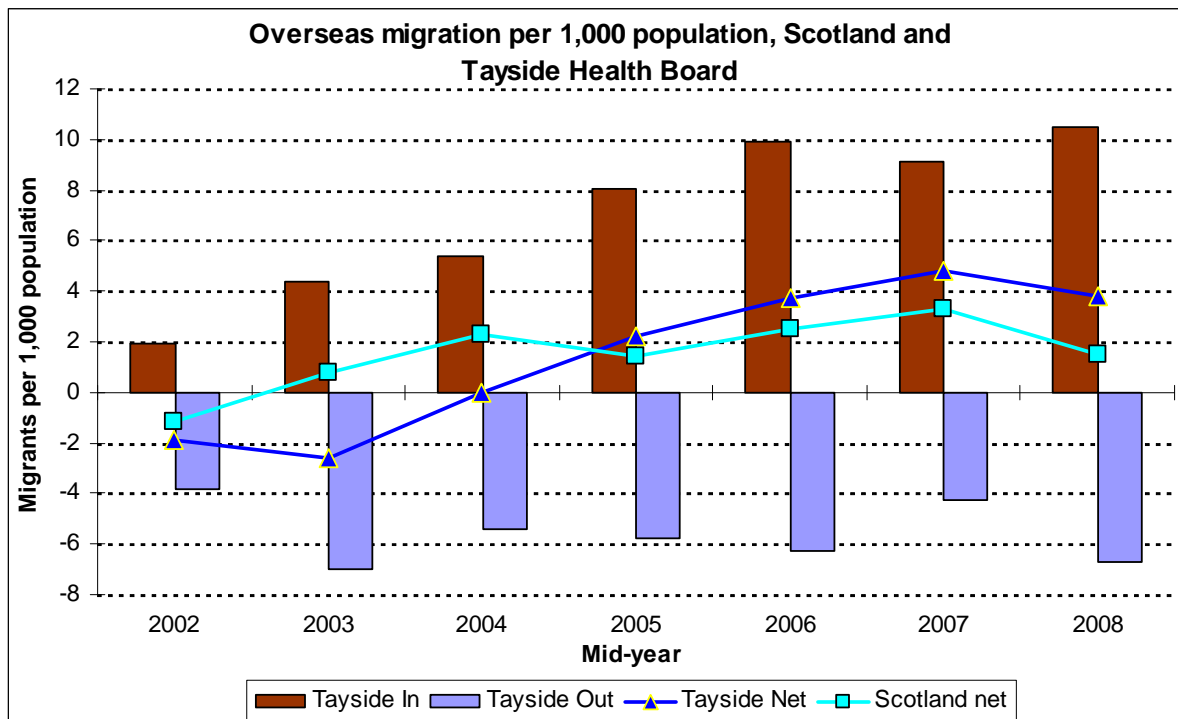


Figure 3 Overseas migration flows for Tayside Health Board (source: GROS)

- Figure 3 shows the net overseas migration for Tayside HB and Scotland (lines). Also shown are the overseas migration flows (in and out) for Tayside HB (bars). All the data are shown as a rate per 1,000 people.
- Overseas migration estimates are produced annually (mid-year to mid-year) and are available back to mid-2002 for Health Boards and mid-2007 for Council Areas on the GROS website<sup>1</sup>. The equivalent data for previous years is not available as a different processing was used that did not distinguish between overseas and rest of UK migration.
- The data can be further broken-down by age and sex.
- These overseas migration figures are from the overseas migration element of the mid-year population estimates (see [Methodology](#)).

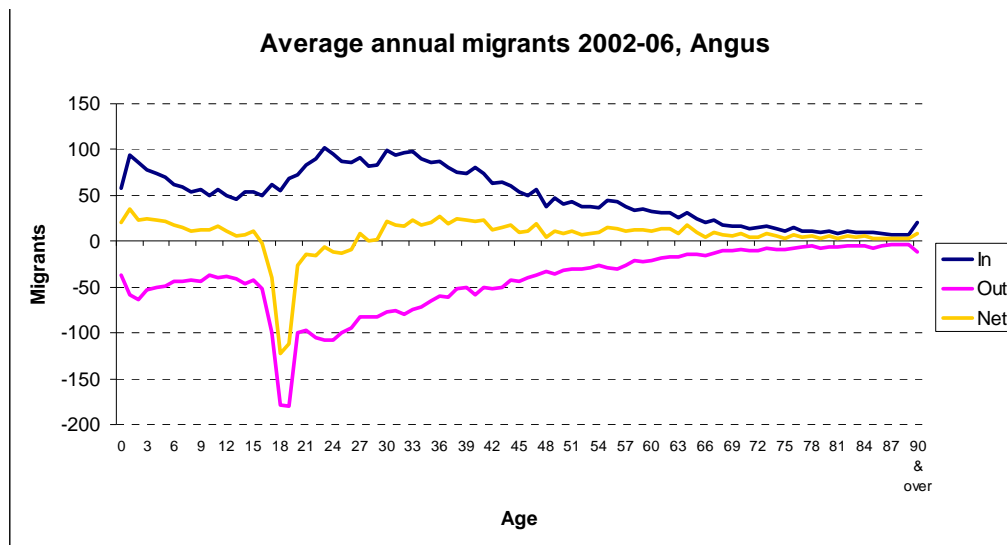


Figure 4a Age-profile of all migrants 2002-2006 for Angus (source: GROS)

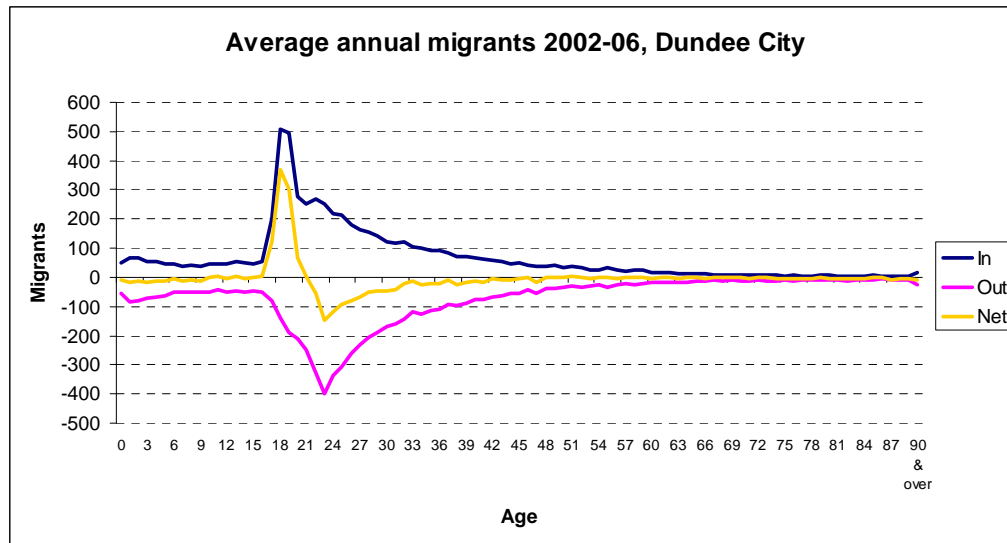


Figure 4b Age-profile of all migrants 2002-2006 for Dundee City (source: GROS)

## 1.1 NHS registrations from overseas

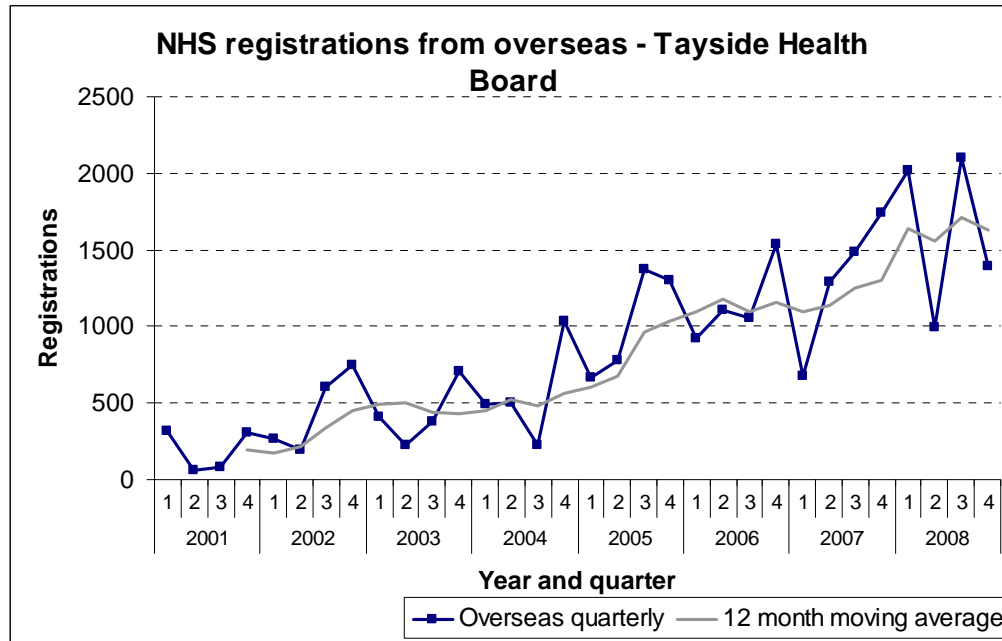


Figure 5 Quarterly NHS registrations of people from overseas, Tayside Health Board (source: GROS/NHSCR).

- Figure 5 shows the number of people who have come from overseas and registered with a GP in the Tayside Health Board area, each quarter since 2001, together with a twelve-month moving average.
- Figure 6 compares the number of registrations from those coming from overseas with registrations from the rest of the UK for Tayside Health Board.
- The data can be further broken-down by age and sex, and is available on request back to 2001.
- These data include short-term overseas migrants, unlike the GROS overseas migration estimates that only count migrants staying for 12 months or more.
- The data is an extract from the NHSCR database.
- NHS GP registrations from overseas data are used to produce the age and sex distributions of international in-migrants in the GROS mid-year estimates. For this use, a three month lag is assumed between arrival and registration. More information is available from the [Data source methodology and information](#) section.

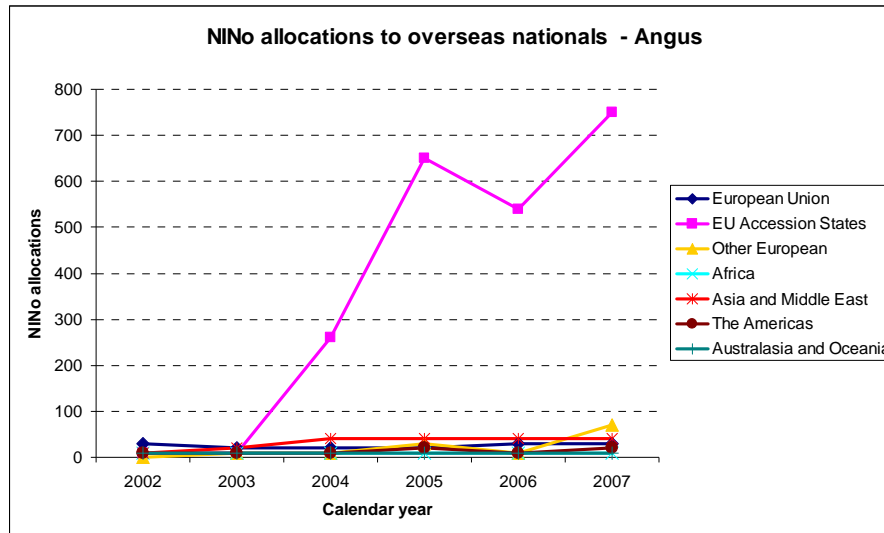


Figure 8a National Insurance number allocations to overseas nationals in Angus (source: DWP)

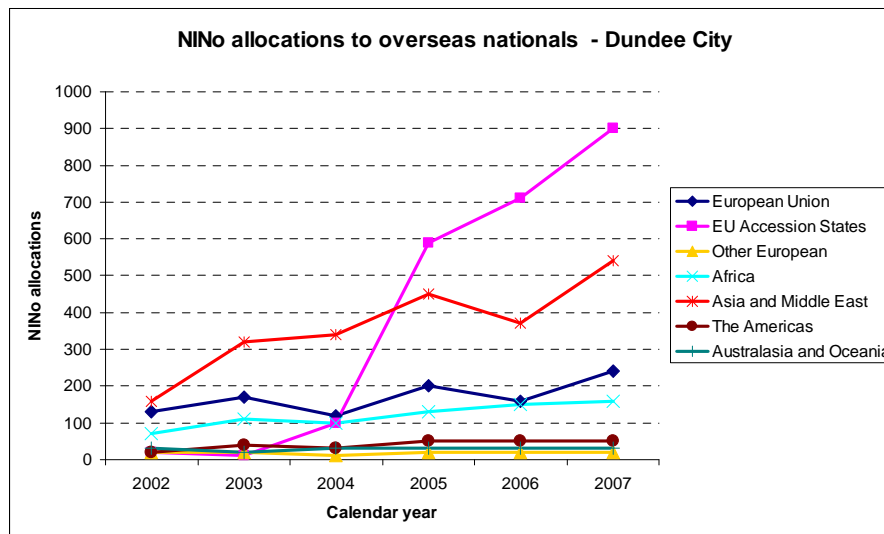


Figure 8b National Insurance number allocations to overseas nationals in Dundee City (source: DWP)

## 1.1 Pupil Census

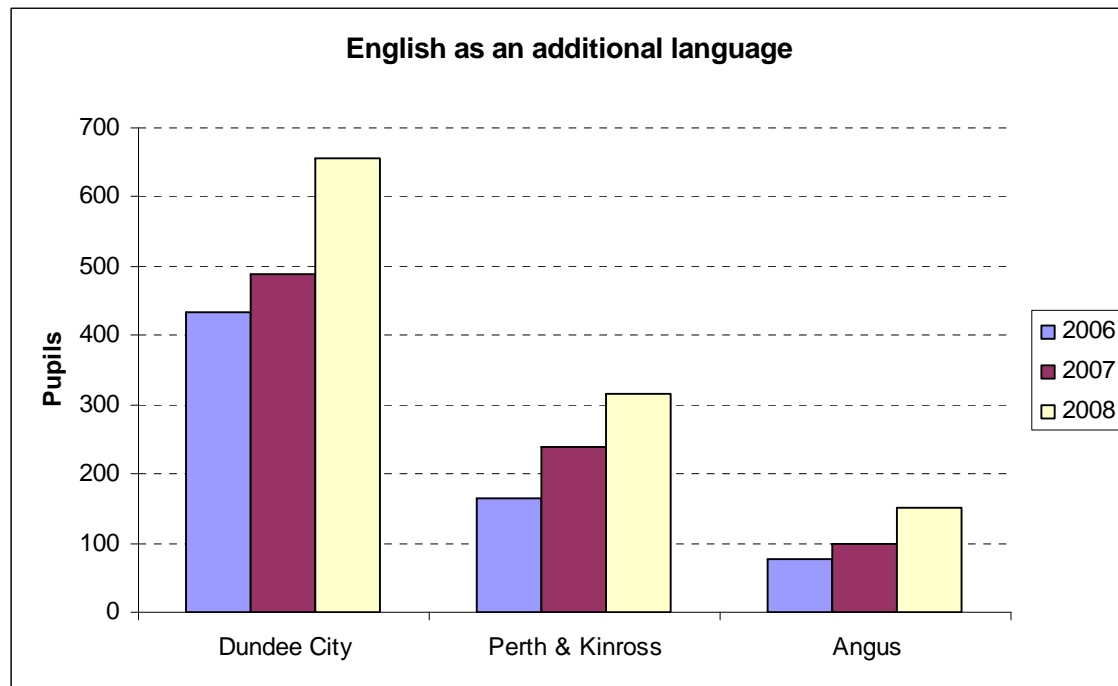


Figure 10 Pupils with English as an additional language (source: Pupil Census)

	2006	2007	2008	Main three languages after English in 2008
<b>Dundee City</b>	725	807	964	Punjabi, Urdu, Polish
<b>Perth &amp; Kinross</b>	334	348	506	Polish, Scots, Cantonese
<b>Angus</b>	129	162	239	Polish, Urdu, Punjabi

Table 5 Pupils with non-English main home language

- The data shown in this section is derived mainly from the Pupil Census which is collected as part of the ScotXed programme. The data is published annually in February.
- Data on English as an additional language and main home language data is available from 2006; data on minority ethnic groups is available from 2003.



<b>Migration report group</b>	<b>Local Authorities</b>	<b>Health Boards</b>
<b>Ayrshire</b>	East Ayrshire North Ayrshire South Ayrshire	Ayrshire and Arran
<b>Borders and Dumfries &amp; Galloway</b>	Dumfries and Galloway Scottish Borders	Dumfries and Galloway Scottish Borders
<b>Fife and Forth Valley</b>	Fife Clackmannanshire Falkirk Stirling	Fife  Forth Valley
<b>Glasgow and the Clyde Valley</b>	East Dunbartonshire Glasgow City North Lanarkshire South Lanarkshire East Renfrewshire Inverclyde Renfrewshire West Dunbartonshire	Greater Glasgow & Clyde and Lanarkshire
<b>Grampian</b>	Aberdeen City Aberdeenshire Moray	Grampian
<b>Highland, Argyll and Bute</b>	Argyll & Bute Highland	Highland
<b>Lothian</b>	East Lothian Edinburgh, City of Midlothian West Lothian	Lothian
<b>Orkney, Shetland and Western Isles</b>	Eilean Siar Orkney Islands Shetland Islands	Western Isles Orkney Shetland
<b>Tayside</b>	Angus Dundee City Perth and Kinross	Tayside

# Where can I get the reports?

[www.gro-scotland.gov.uk](http://www.gro-scotland.gov.uk)

Statistics > Migration > Local Area  
Migration Reports

- Each reports available as PDF
- Contact us if you would like the raw data behind the charts

# Another useful resource- *Migration indicators tool*

[www.statistics.gov.uk](http://www.statistics.gov.uk)

- Developed by the ONS
- Spreadsheet based
- Comparison of migration indicators and different areas

# Compare indicators

	A	B	C	D	E	F	G	H	I	J	K	L	M	N	O	P	Q	R	S	T
3	Select Geography	Scotland																		
4	Select Indicator	NINo registrations as proportion of resident popn (Source:DWP)																		
5	Select Indicator	WRS as a proportion of the resident popn (Source:LGA)																		
6	Select Indicator	Not Specified																		
8	Notes: 1. Rates and proportions should not be compared (see metadata for details).																			
9	2. For consistency all proportions are shown to 3 decimal places.																			
10	3. 2004 - 2007 data is not available for the new UA's, formed from 1st April 2009.																			
11	4. WRS LA proportions are not shown because they are too small for presentational purposes.																			
12	5. 2004 WRS data is for months May - December only.																			
13	6. "~" = not specified "-" = not available "*" = removed for disclosure control																			
14	<a href="#">Link to Please Read This</a>																			
15	<a href="#">Link to Metadata</a>																			
19	<b>Population Turnover:</b> Figures presented show the volume of international or internal movement, and are calculated as the sum of in and out-migration (in the year to June) per thousand resident population.																			
22	<b>Non-UK population:</b> Figures presented show the estimated non-UK born population as a proportion of the resident population.																			
24	<b>Non-British population:</b> Figures presented show the estimated population of non-British nationality as a proportion of the resident population.																			
26	<b>Migrant National Insurance Number (NINo) allocations:</b> Figures presented show the number of NINo allocations to overseas nationals entering the UK as a proportion of the resident population by calendar year.																			
29	<b>New Flag4 GP Registrations (Flag4):</b> Figures presented show the number of new Flag4 records per thousand resident population by calendar year.																			
31	<b>Worker Registration Scheme (WRS):</b> Figures presented show the number of WRS registrations to A8 citizens as a proportion of the resident population.																			
33																				
34																				
36																				
37																				
38																				
39																				
41																				

**Scotland**

Year	NINo registrations as proportion of resident popn (Source:DWP)	WRS as a proportion of the resident popn (Source:LGA)	Not Specified
2004	0.004	0.001	0.000
2005	0.008	0.003	0.000
2006	0.009	0.004	0.000
2007	0.011	0.004	0.000
2008	0.009	0.003	0.000

Geography	Indicator	2004	2005	2006	2007	2008
Scotland	NINo registrations as proportion of resident popn (Source:DWP)	0.004	0.008	0.009	0.011	0.009
Scotland	WRS as a proportion of the resident popn (Source:LGA)	0.001	0.003	0.004	0.004	0.003
Scotland	Not Specified	~	~	~	~	~

# Compare areas

Select Indicator: NINo registrations as proportion of resident popn

Select Geography: Edinburgh, City of

Select Geography: Glasgow City

Select Geography: Perth and Kinross

Notes: 1. Rates and proportions should not be compared (see metadata for details).  
 2. For consistency all proportions are shown to 3 decimal places.  
 3. 2004 - 2007 data is not available for the new UA's, formed from 1st April 2009.  
 4. WRS LA proportions are not shown because they are too small for presentational purposes.  
 5. 2004 WRS data is for months May - December only.  
 6. "-" = not specified "-" = not available "\*" = removed for disclosure control

[Link to 'Please Read This'](#)

[Link to Metadata](#)

**Population Turnover:** Figures presented show the volume of international or internal movement, and are calculated as the sum of in and out-migration (in the year to June) per thousand resident population

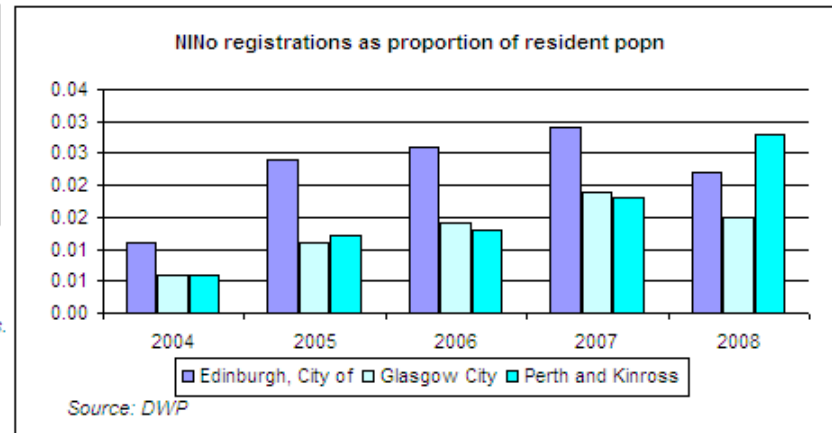
**Non-UK population:** Figures presented show the estimated non-UK born population as a proportion of the resident population.

**Non-British population:** Figures presented show the estimated population of non-British nationality as a proportion of the resident population.

**Migrant National Insurance Number (NINo) allocations:** Figures presented show the number of NINo allocations to overseas nationals entering the UK as a proportion of the resident population by calendar year.

**New Flag4 GP Registrations (Flag4):** Figures presented show the number of new Flag4 records per thousand resident population by calendar year.

**Worker Registration Scheme (WRS):** Figures presented show the number of WRS registrations to A8 citizens as a proportion of the resident population.



Geography	Indicator	2004	2005	2006	2007	2008
Edinburgh, City of	NINo registrations as proportion of resident popn	0.011	0.024	0.026	0.029	0.022
Glasgow City	NINo registrations as proportion of resident popn	0.006	0.011	0.014	0.019	0.015
Perth and Kinross	NINo registrations as proportion of resident popn	0.006	0.012	0.013	0.018	0.028

Migration statistics on GROS website

[www.gro-scotland.gov.uk/statistics/migration/index.html](http://www.gro-scotland.gov.uk/statistics/migration/index.html)

Comments and suggestions to Population and  
Migration Statistics using our Contact Form

[http://www.gro-scotland.gov.uk/contacts/contact-  
form.html](http://www.gro-scotland.gov.uk/contacts/contact-form.html)

0131 314 4299

Population and migration statistics  
General Register Office for Scotland

# **Does the format of the migration reports and indicators tool meet your needs?**

Are the reports accessible enough? Or not detailed enough?

Is a printable PDF report a useful format? If not, what would you prefer?

Does the LA grouping of the reports make sense?

How often would you like the reports updated?

**Would you/do you use the  
local area migration reports?**

How are they used?

Who uses them?



# **Does the content of the local area migration reports and the migration indicators tool meet your needs?**

Should the focus be on international migration or all migration?

Would you like to see Worker Registration Scheme data included?

What aspect is most important for you? Timeliness, age/nationality/geographical breakdown?

What other sources of data would you like to see included?