

# Scotland's Census 2011

Head of Census Statistics  
National Records of Scotland

# Releases so far

Release 1 was completed in August 2013, giving:

- ▶ Un-rounded population Scotland, council areas and health boards by single year of age and sex;
- ▶ Population and number of households by postcode, output areas, data zones and Scotland's islands;
- ▶ And a range of geographic and other supporting information.

Bulk of release 2 is now published...

# Release 2

## 2A – 26 September 2013

Key and Quick Statistics tables for the following topics at Scotland, council area and health board level:

- ▶ Ethnicity, Religion, Language and Identity
- ▶ Health
- ▶ Population
- ▶ Housing and Accommodation

Census profiles - 'Population', 'Household', 'Health' and 'Ethnicity, Identity, Language and Religion' - were released at the same geographies.

# Release 2

## 2B - 14 November 2013

Key and Quick Statistics tables for the Education and Labour Market topics. Data was published for all 16 levels of census geography:

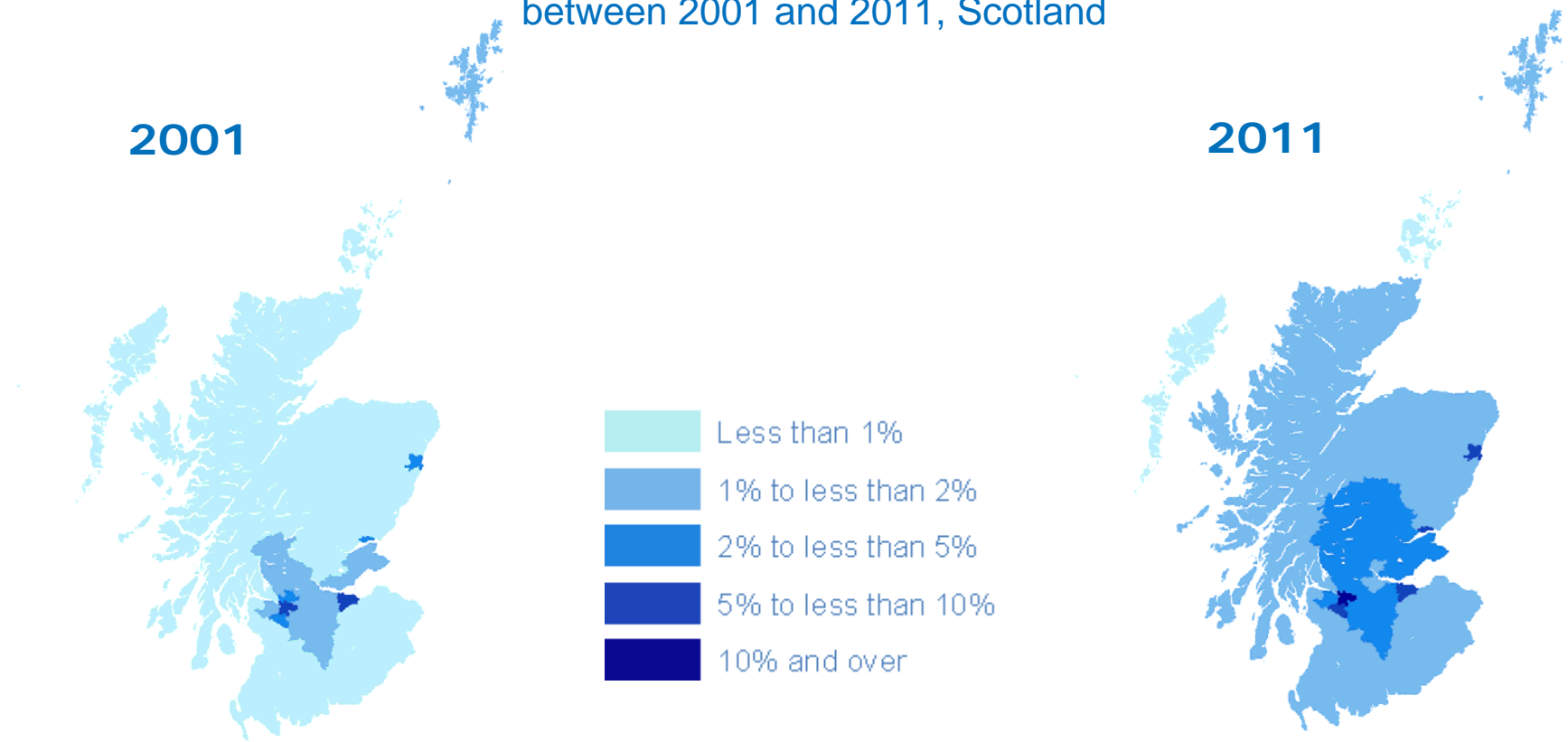
- ▶ Education
- ▶ Labour Market

We also published data for Release 2A topics for the remaining 13 levels of census geography not provided on 26 September.

So, some results from Release 2...

# Growing ethnic diversity

Proportion of people reported as belonging to minority ethnic group between 2001 and 2011, Scotland



# Growing ethnic diversity

- ▶ The proportion of population reported as belonging to a minority ethnic group varies by council area:

Highest:

Glasgow City - 12 per cent

City of Edinburgh and Aberdeen City - 8 per cent

Dundee City - 6 per cent

Lowest:

North Ayrshire – 1.1 per cent

Eilean Siar – 0.9 per cent

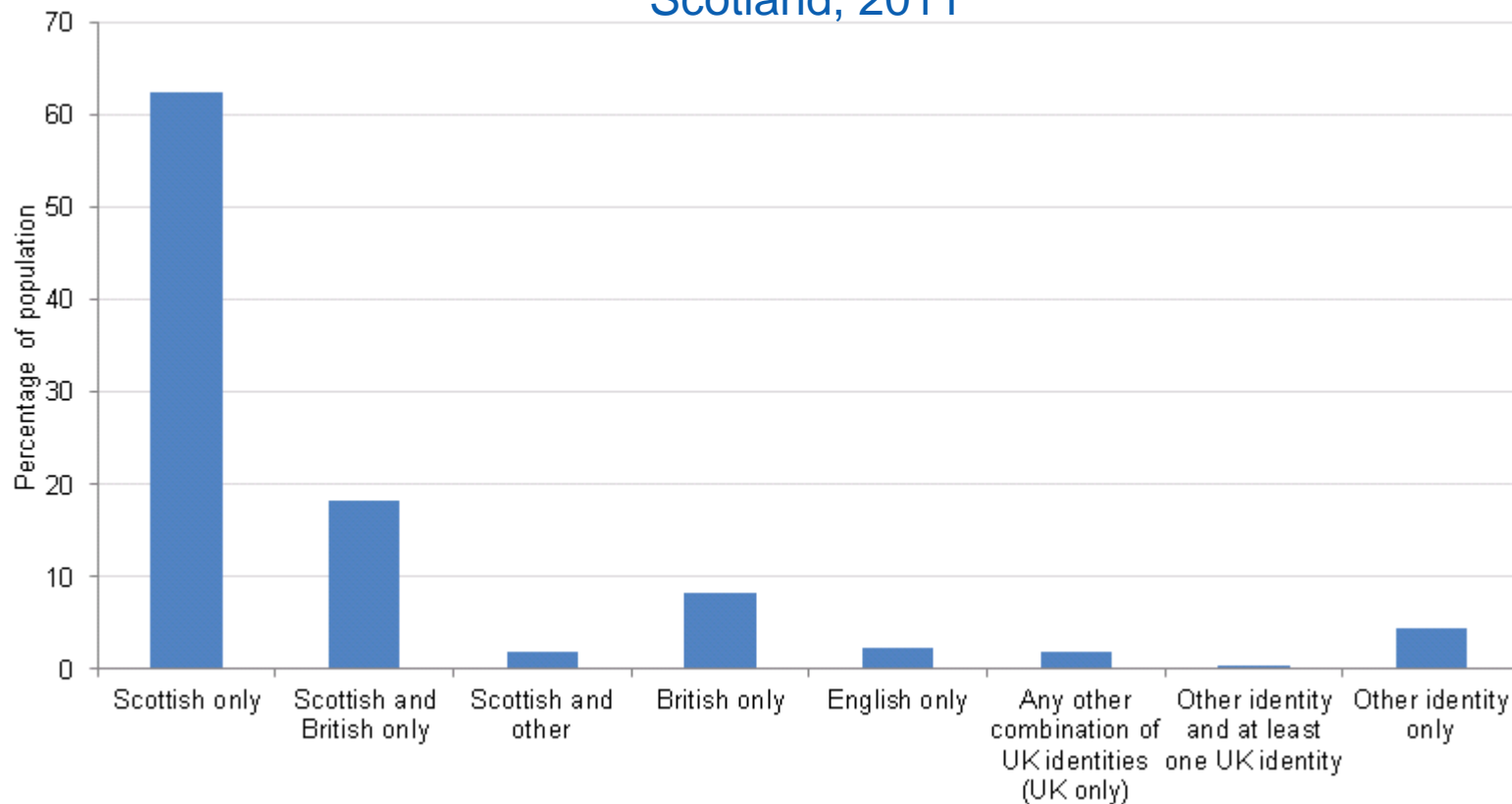
Orkney Islands – 0.7 per cent

# More people born abroad

- ▶ 7 per cent of people living in Scotland were born abroad, increase of 3 percentage points since 2001
- ▶ 55 per cent of those born abroad arrived between 2004 and 2011
- ▶ 69 per cent were of working age (aged 16-64) when they arrived
- ▶ 38 per cent were in their twenties
- ▶ In Aberdeen City, 1 person in 6 was born abroad compared with East Ayrshire where 1 person in 44 was born abroad

# National identity

Proportion of population by national identity,  
Scotland, 2011





# National identity

- ▶ Councils with **highest** proportion of population reporting some Scottish and Scottish only national identity:

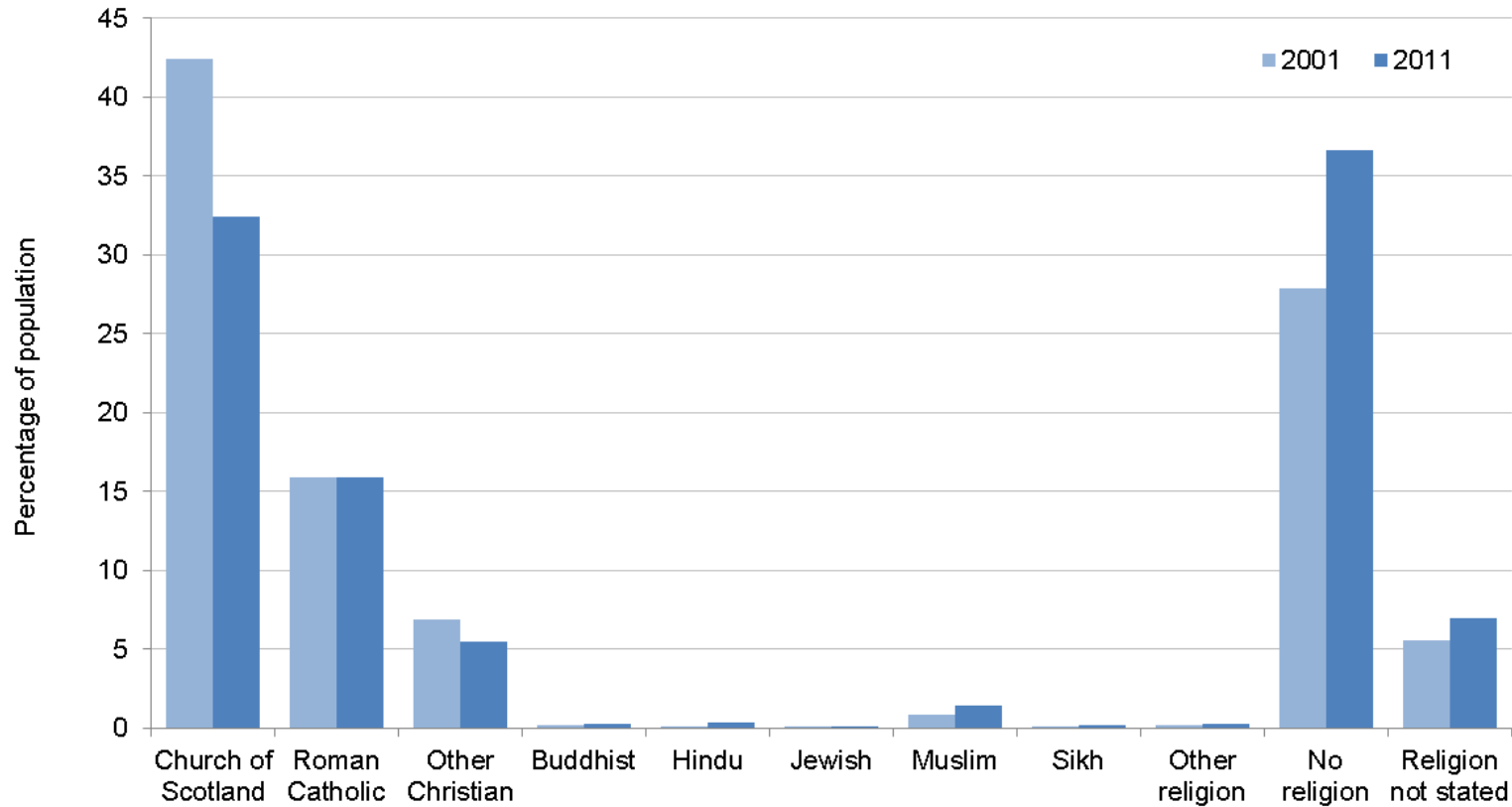
	Some Scottish (%)	Scottish only (%)
North Lanarkshire	90.9	71.6
Inverclyde	90.7	70.0
East Ayrshire	90.6	70.6
West Dunbartonshire	90.5	72.0

- ▶ Councils with **lowest** proportion of population reporting some Scottish and Scottish only national identity:

	Some Scottish (%)	Scottish only (%)
Aberdeen City	74.9	54.7
City of Edinburgh	70.5	48.8

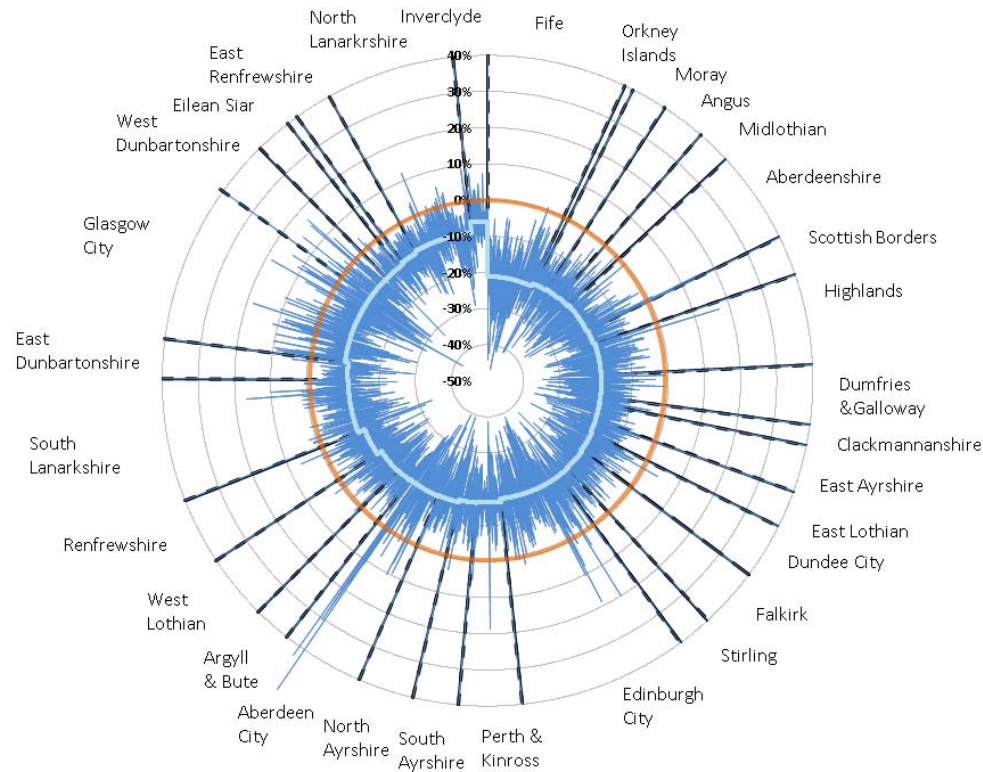
# Belonging to a religion

Proportion of people by religion, Scotland, 2001 and 2011



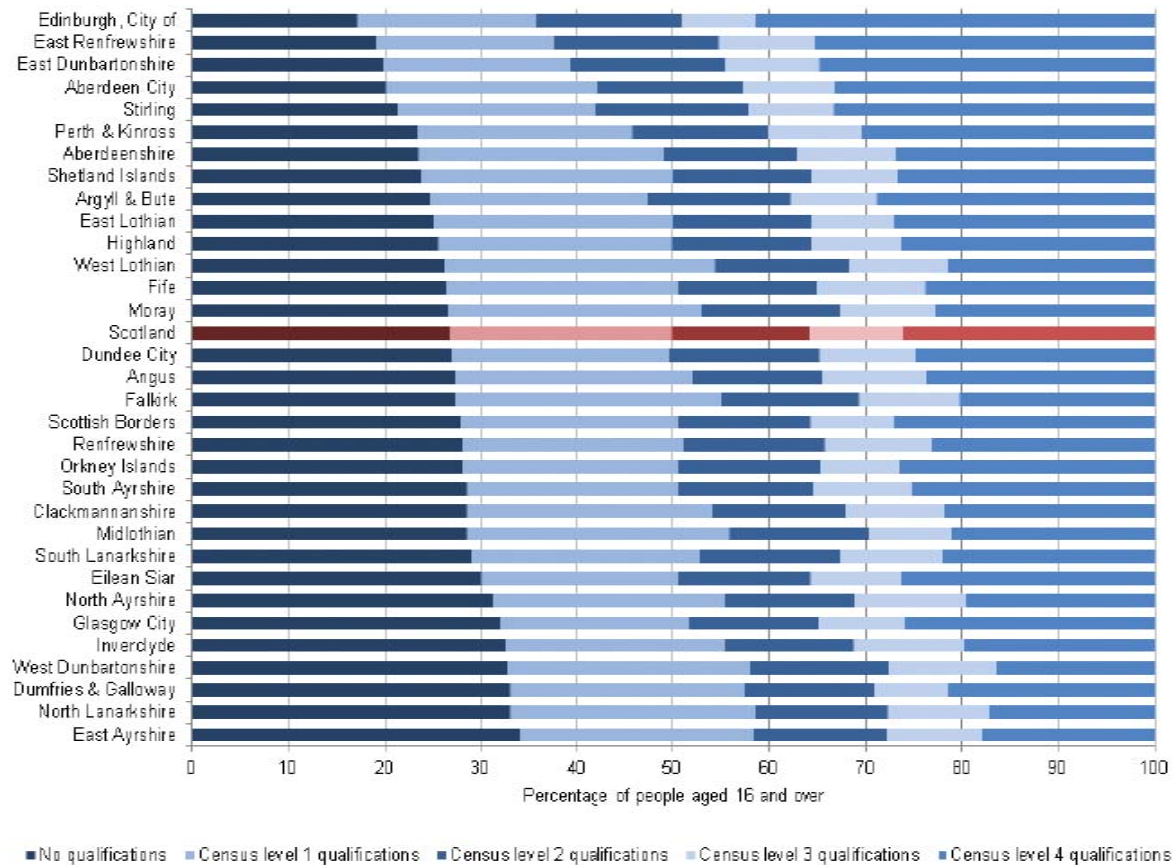
# Belonging to a religion

Proportion of people by religion, change by council and data zones, 2001 - 2011



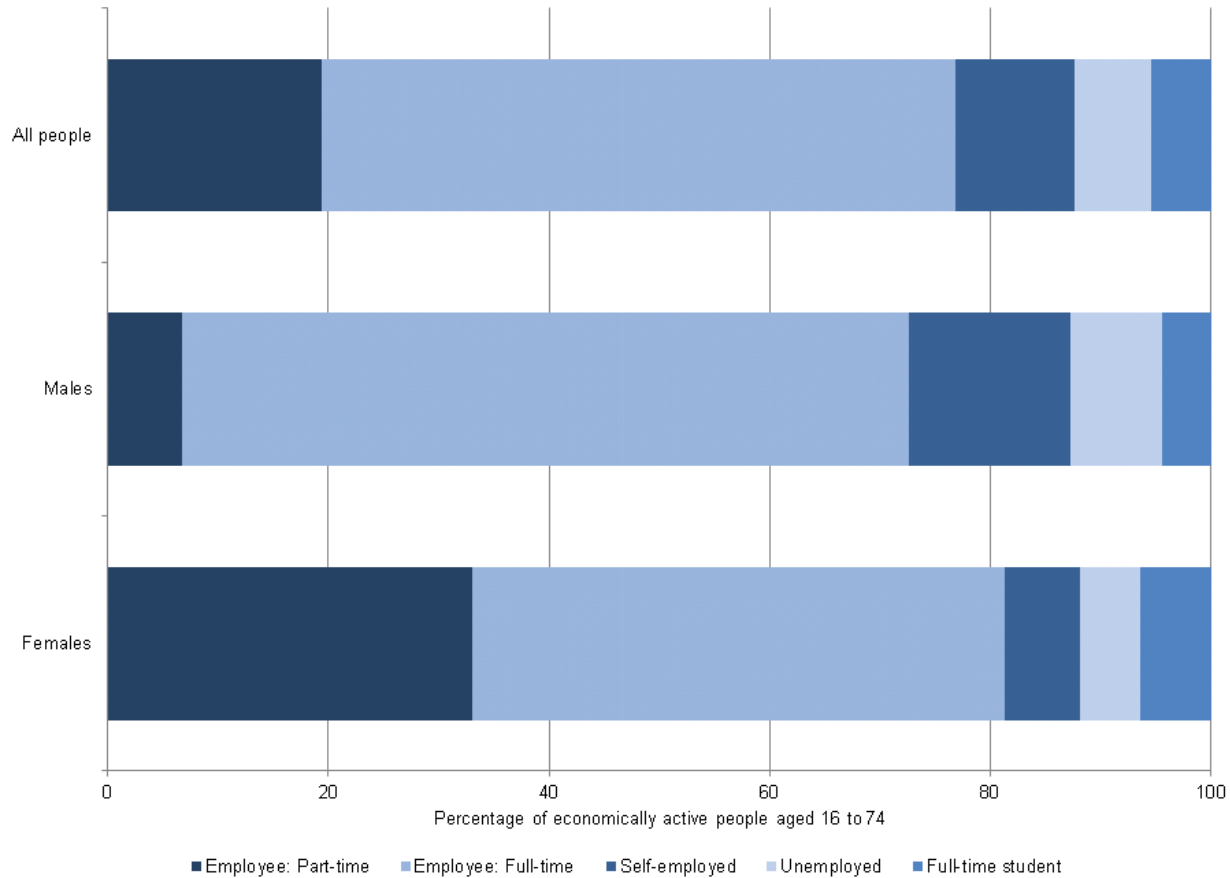
# Qualifications

Highest level of qualification of people aged 16 and over by council area, Scotland, 2011



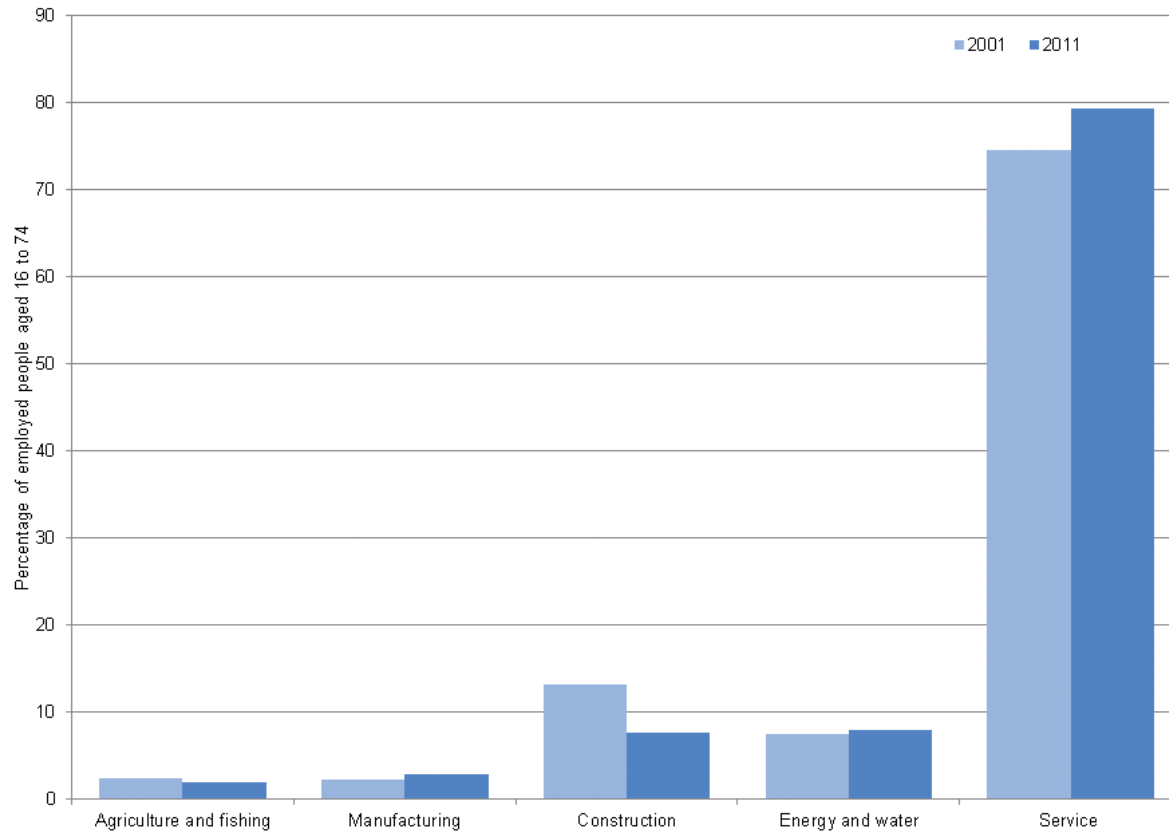
# Economic Activity

Economically active people aged 16 to 74 by sex, Scotland, 2011



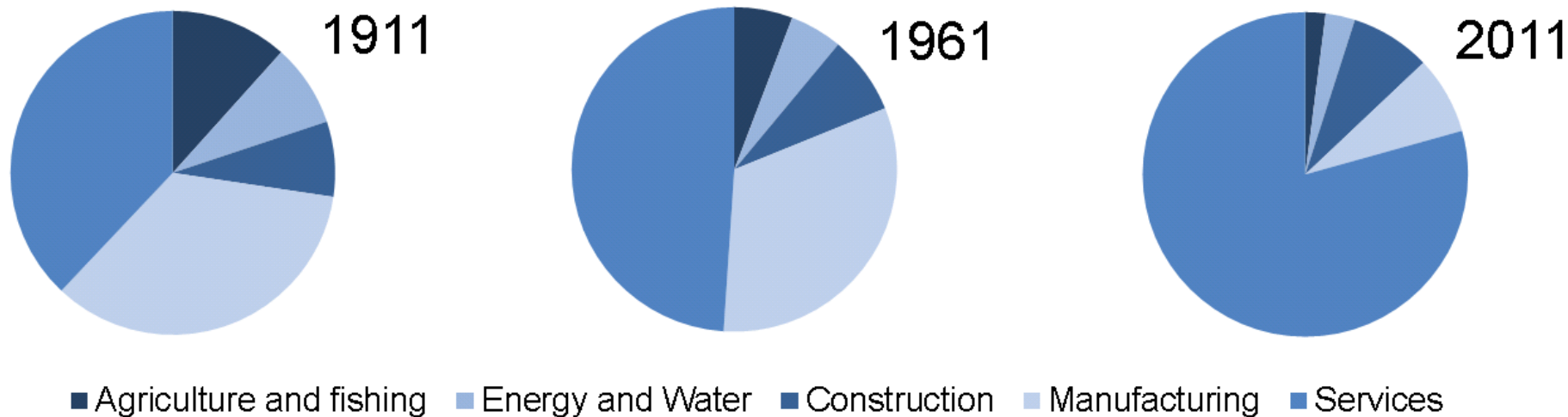
# Industry

High-level industry sector of employed people aged 16 to 74, Scotland, 2001 and 2011



# Industry

High-level industry sector of employed people aged 16 to 74, Scotland, 1911, 1961 and 2011



# Media coverage



**BBC online**

**“Edinburgh in baby boom as under-fives up 18%”**  
**Edinburgh Evening News**

“What we learned from the Census 2011:  
More women, more OAPs, more people.”  
**The Daily Record**

“Home alone: how single-person households now prevail across Scotland”

**Herald online**

“Scotland becomes ‘a more colourful country’”

**BBC online**

“Almost two thirds of Scotland's residents are 'Scottish only' ” **STV**

“Challenge to the Kirk as number of Scots without a religion at new high”

**The Herald**

“Census shows decline in Gaelic speakers 'slowed' ”

**BBC**

“Number of foreign nationals in Aberdeen triples”  
**Evening Express**



# Supporting documentation and visualisations

- ▶ A range of supporting methodology papers (linking to relevant Office for National Statistics) documents published as well as quality assurance information.
- ▶ Data visualisation and maps published online – population pyramids, local authority comparator tools and a range of maps showing comparisons between 2001-11.
- ▶ And now also our ‘Census Data Explorer’... via: [www.scotlandscensus.gov.uk](http://www.scotlandscensus.gov.uk)

## Area Profiles

Compare the characteristics of different areas across Scotland.

## Maps and Charts

View selected census results through interactive maps and charts

## Standard outputs

Aimed at experienced users of statistics, a wide selection of statistical tables are available by topic

## Data warehouse

All published Standard Outputs tables in bulk csv format

## Supporting information

To aid understanding of the results and how they were derived.

Scotland's census is the official count of every person and household, which takes place every 10 years. The census helps inform decisions on how billions of pounds of taxes will be spent every year on services everyone needs, such as education, transport and healthcare.

Aggregated and anonymised results are provided on a wide range of topics derived from the [2011 Census questionnaire](#). Interactive maps and charts are provided as well as a range of supporting information to help you understand the results and how they were derived.

In order to [protect against disclosure of personal information](#), some records have been swapped between different geographic areas. Some table values will be affected, particularly small values at the most detailed geographies. All statistics are available under the [Open Government Licence](#).

[Summary counts of population and housing](#) were provided in the first release of census results. Plans for release of census results are available in our [outputs prospectus](#).

The minimum optimal screen resolution for this site is 1024 x 768.



## Find out about an area

Choose an **area type**

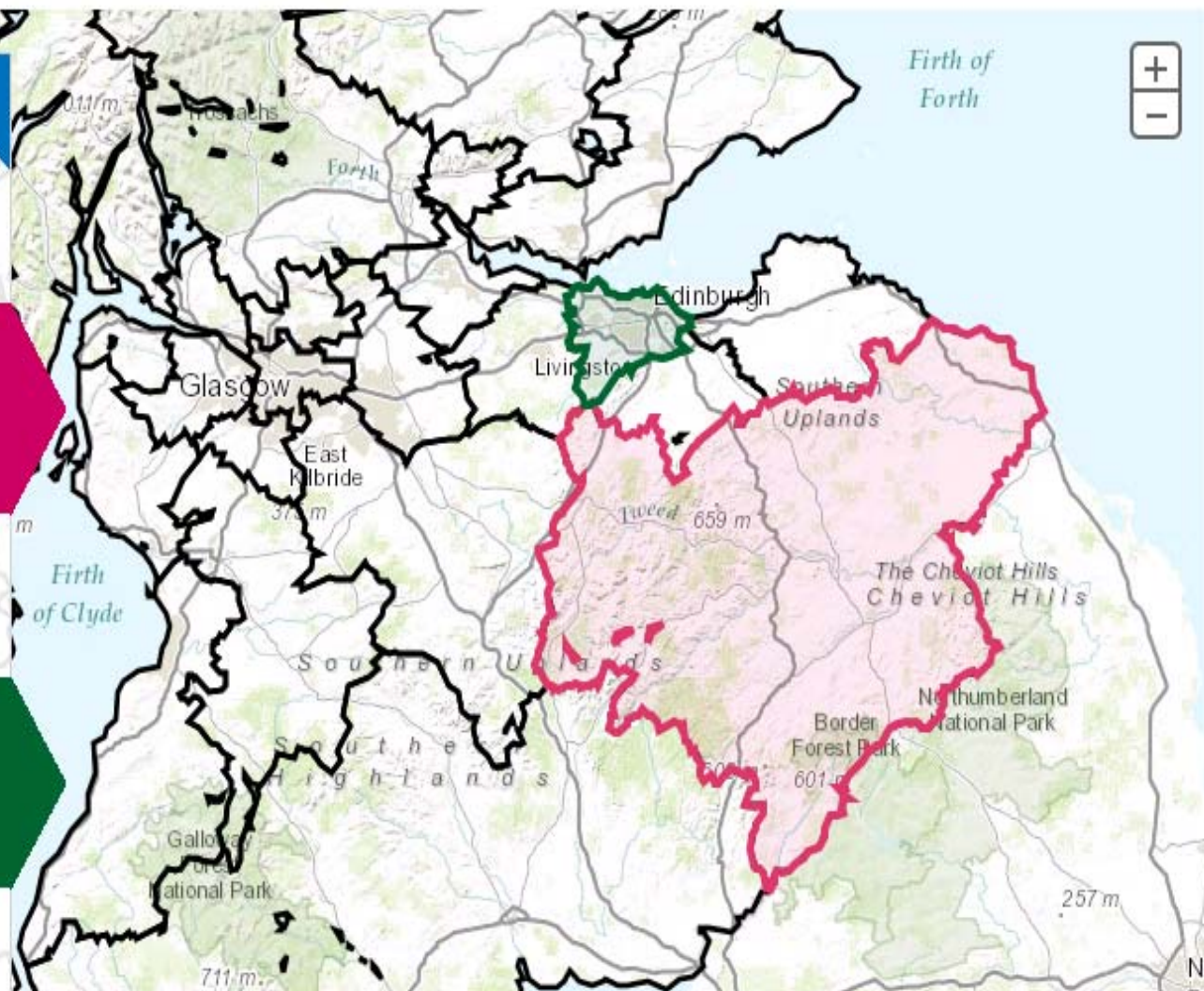
Select an **area**

...or click to select an area on the map

Choose a **second area type**


Select a **second area**

...or click to select an area on the map

[Remove comparison](#)[Get data](#)

## Population

[Interesting facts](#) [Sex](#) [Age](#) [Marital status](#) [Resident type](#)

 [Print Interesting facts data](#) | [Print Population data](#)  
 [Download Population data](#)

	Scottish Borders	Edinburgh, City of	Scotland
Median age - Males	45	35	40
Median age - Females	46	37	42
Number of males per female - under 25	1.017	1.000	1.030
Number of males per female - 25 to 64	0.959	0.997	0.958
Number of males per female - 65 and over	0.796	0.702	0.757

## Did you know?

### Highest ever population

The population of Scotland on census day in 2011 was estimated to be 5,295,403 - the highest ever and a 4.6 per cent rise since 2001.

### Marital Status

The proportion of adults (people aged 16 and over) in Scotland who are married is 45 per cent, a five percentage point decrease since 2001. The proportion of adults who are single (never married or never registered a same-sex civil partnership) rose to 35 per cent in 2011, an increase of 5 percentage points from 2001.

### More women than men

There were more women (2,728,000 or 51.5 per cent) than men (2,567,400 or 48.5 per cent) in Scotland. This was the case for all council areas except for Shetland Islands.

### Civil partnerships

There were 7,000 people (0.2 per cent of adults) who reported that they were in registered same-sex civil partnerships.



Area Profiles

Maps and Charts

Standard Outputs

Data Warehouse

Supporting Information

## Health

Choose a variable

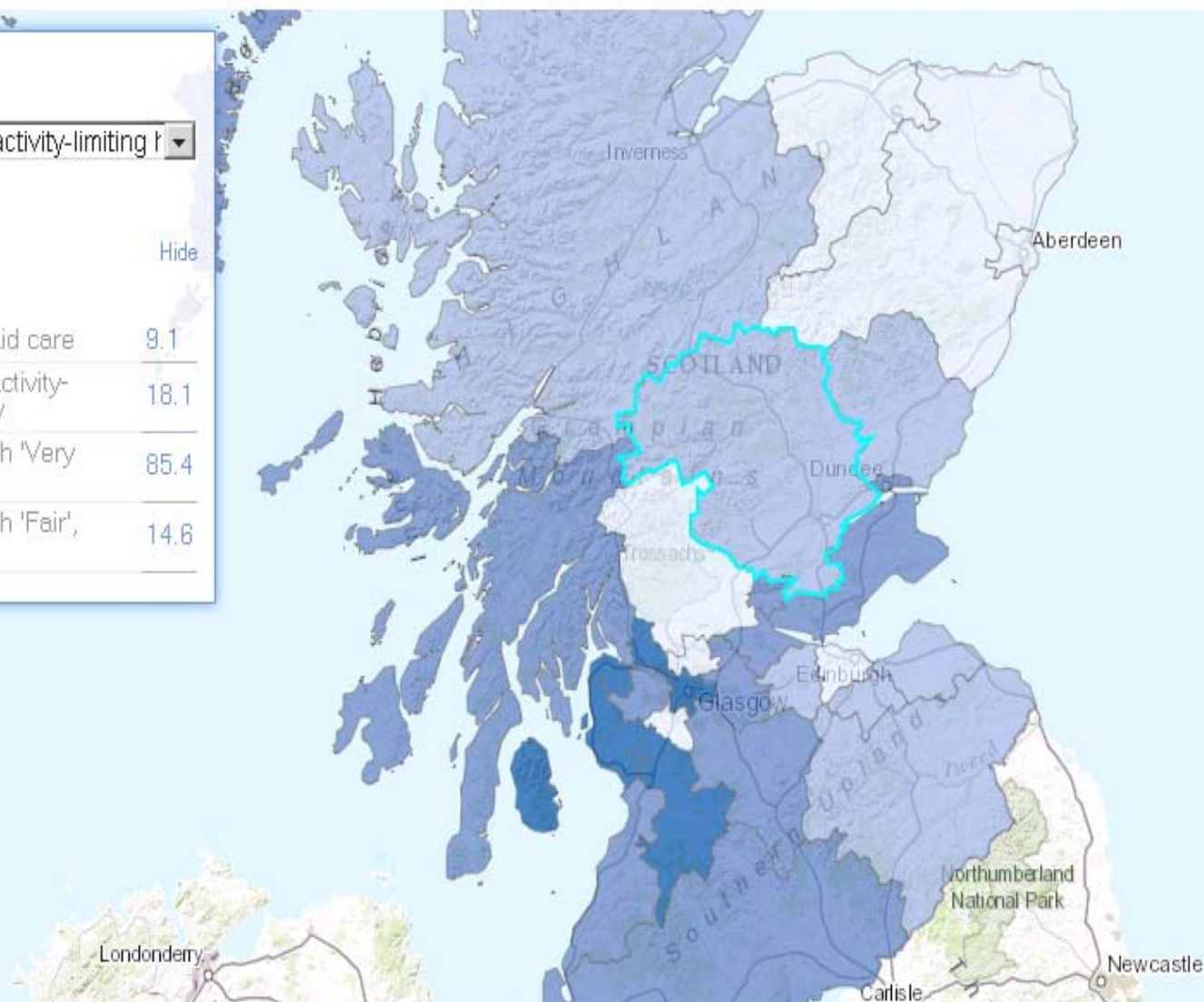
% of population with a long-term activity-limiting health problem or disability

Legend Change Basemap

Hide

### Perth & Kinross

% of population who provide unpaid care	9.1
% of population with a long-term activity-limiting health problem or disability	18.1
% of population with general health 'Very good' or 'Good'	85.4
% of population with general health 'Fair', 'Bad' or 'Very bad'	14.6



# Plans for future releases

## Release 2C – 18 December 2013

- ▶ Key and Quick Statistics tables for the Living Arrangements topic at all levels of census geographies

## Release 3 - from early 2014

- ▶ Local Characteristics and Detailed Characteristics on a phased topic by topic basis as opposed to table type. This means that tables will be grouped by topic so that where possible all characteristics within any given topic will be available to users at around the same time.
- ▶ The profile and timings for publication of the Local Characteristics and Detailed Characteristics tables is being considered.

## Other census products

- ▶ To be confirmed as we move through 2014

# Further information

- ▶ All data available at: [www.scotlandscensus.gov.uk](http://www.scotlandscensus.gov.uk)
- ▶ Also sign up there for our e-newsletter
  
- ▶ Media enquiries: [2011Comms@gro-scotland.gsi.gov.uk](mailto:2011Comms@gro-scotland.gsi.gov.uk)
- ▶ General enquiries: [Customer@gro-scotland.gsi.gov.uk](mailto:Customer@gro-scotland.gsi.gov.uk)