

Vital Events Trends

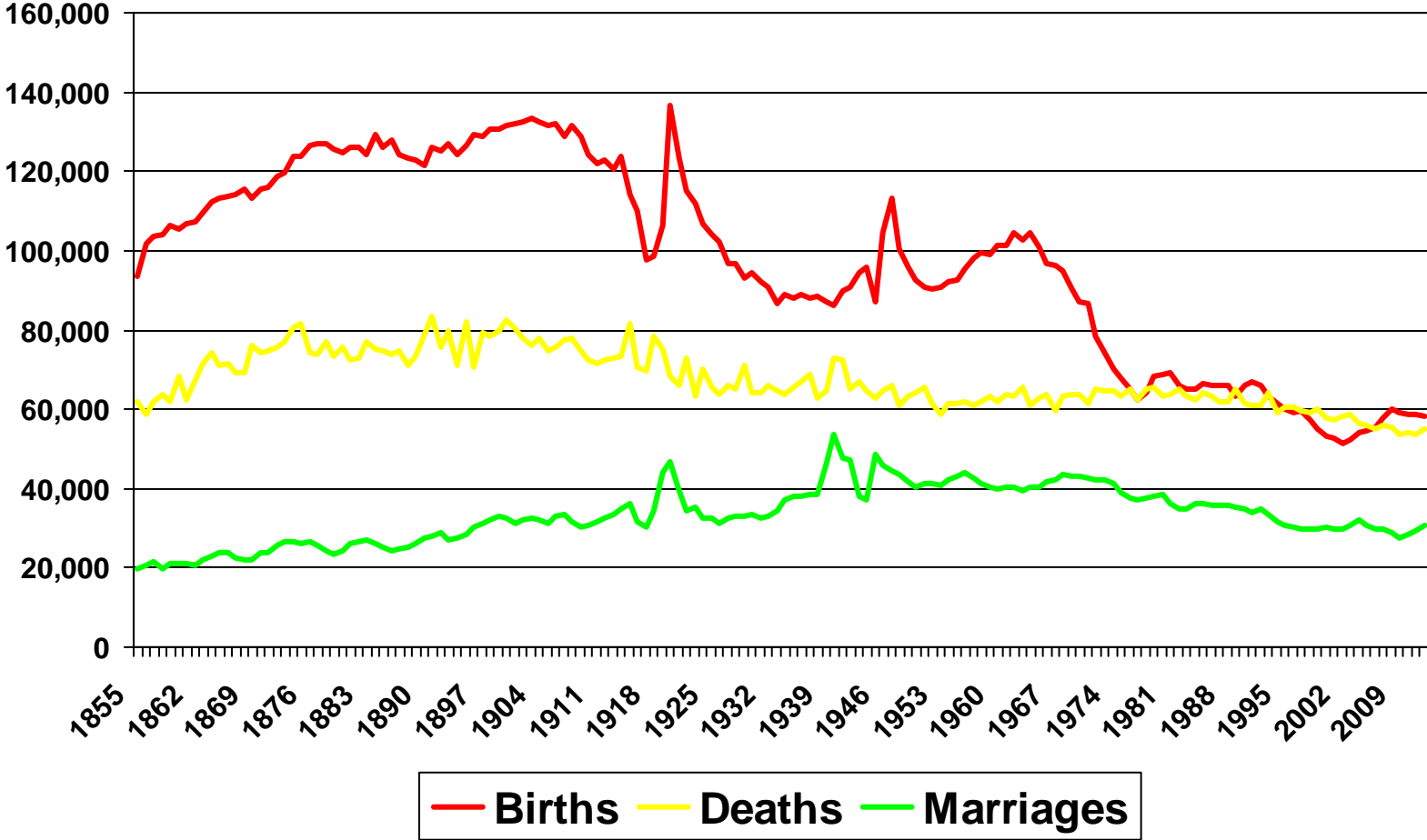
Head of Vital Events Branch

28 November 2013

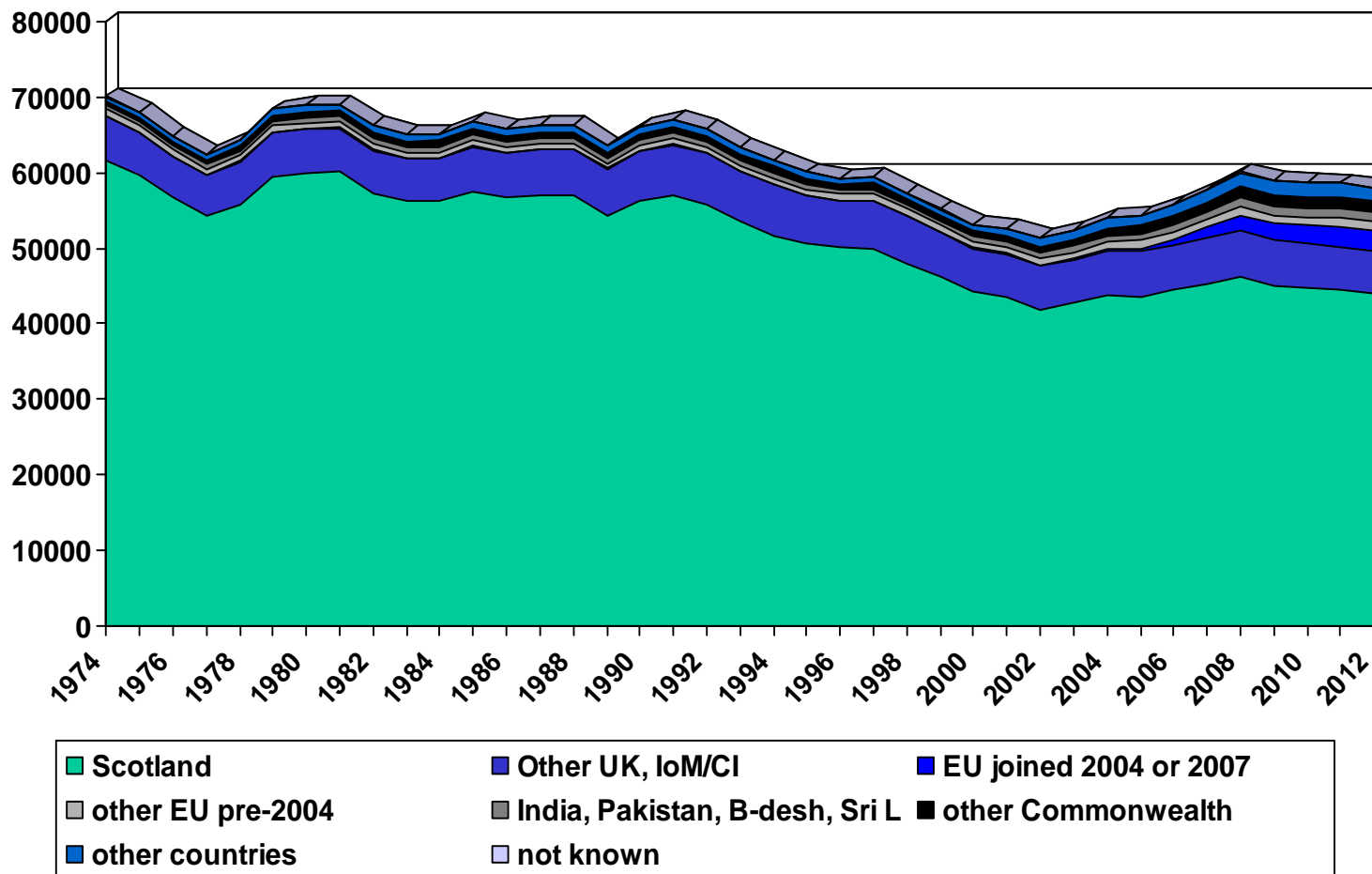
Vital Events Statistics

- Births (including stillbirths)
- Adoptions
- Deaths
- Marriages
- Civil Partnerships

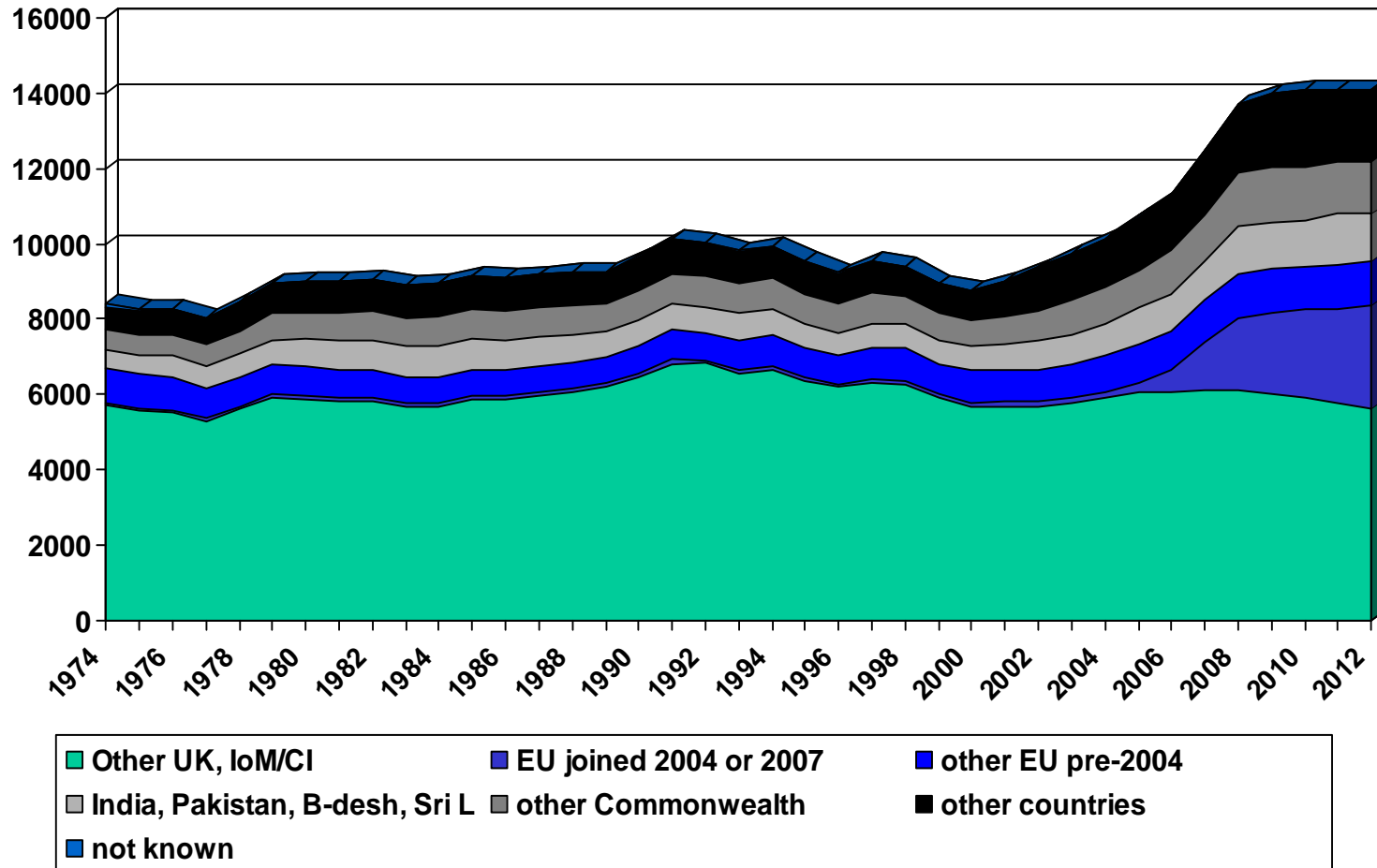
Trends in Vital Events in Scotland, 1855 - 2012



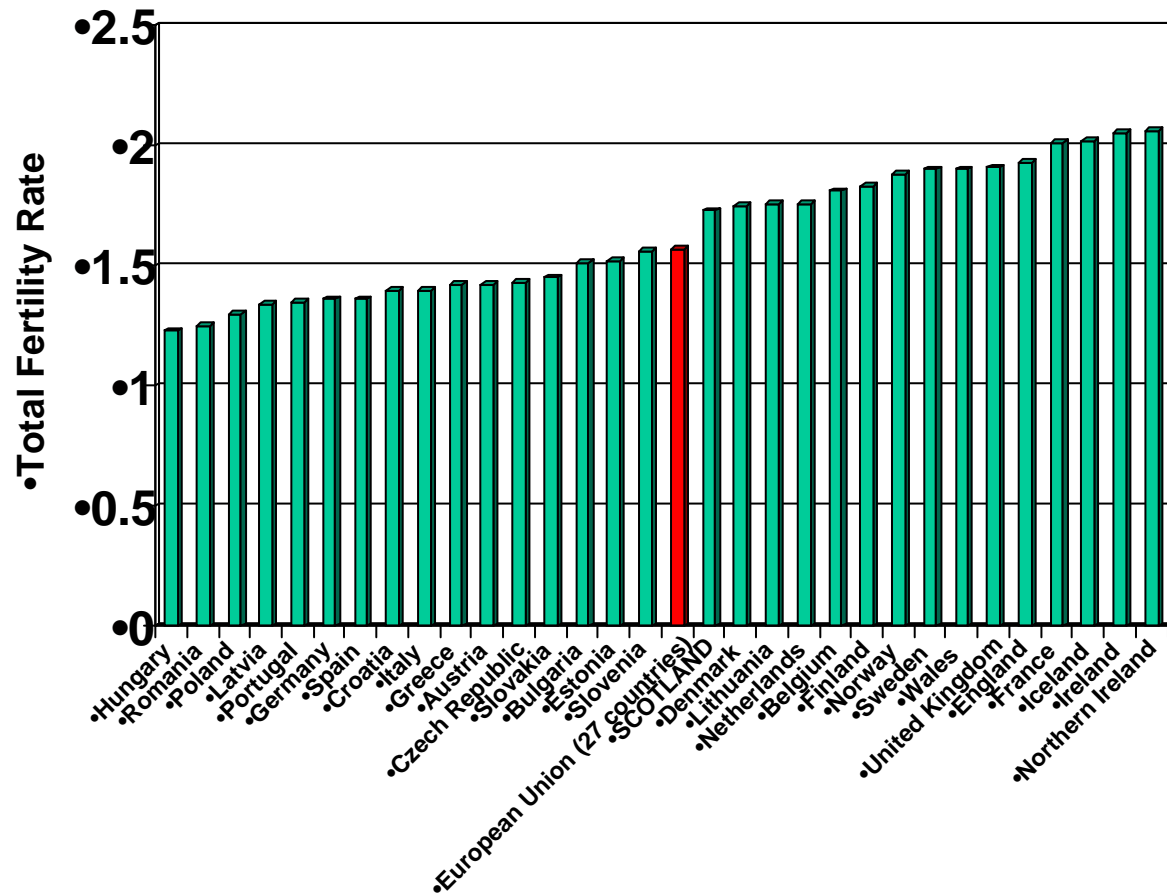
Births in Scotland by mother's country of birth, 1974 - 2012



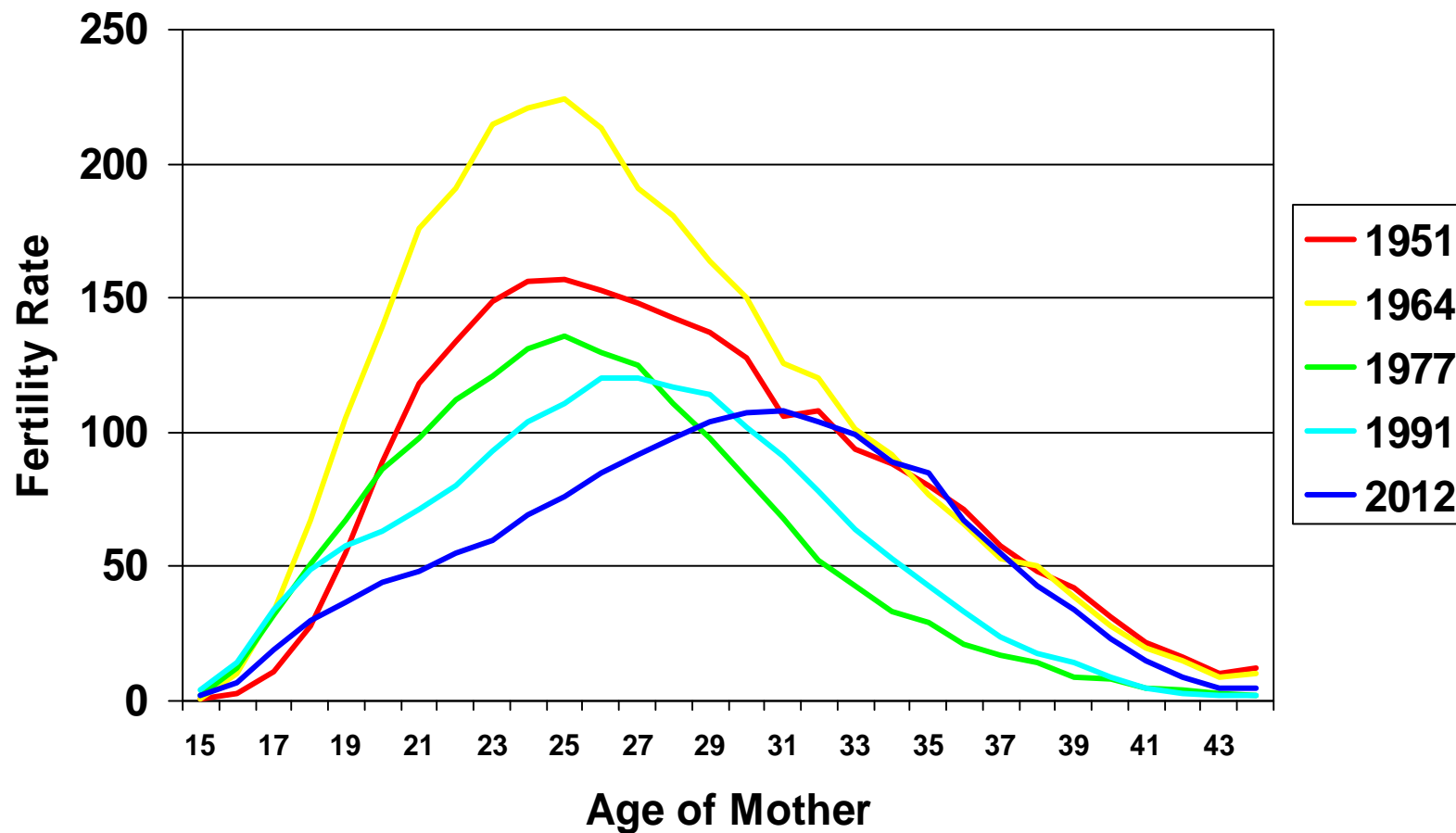
Births to mothers who were not born in Scotland, 1974 - 2012



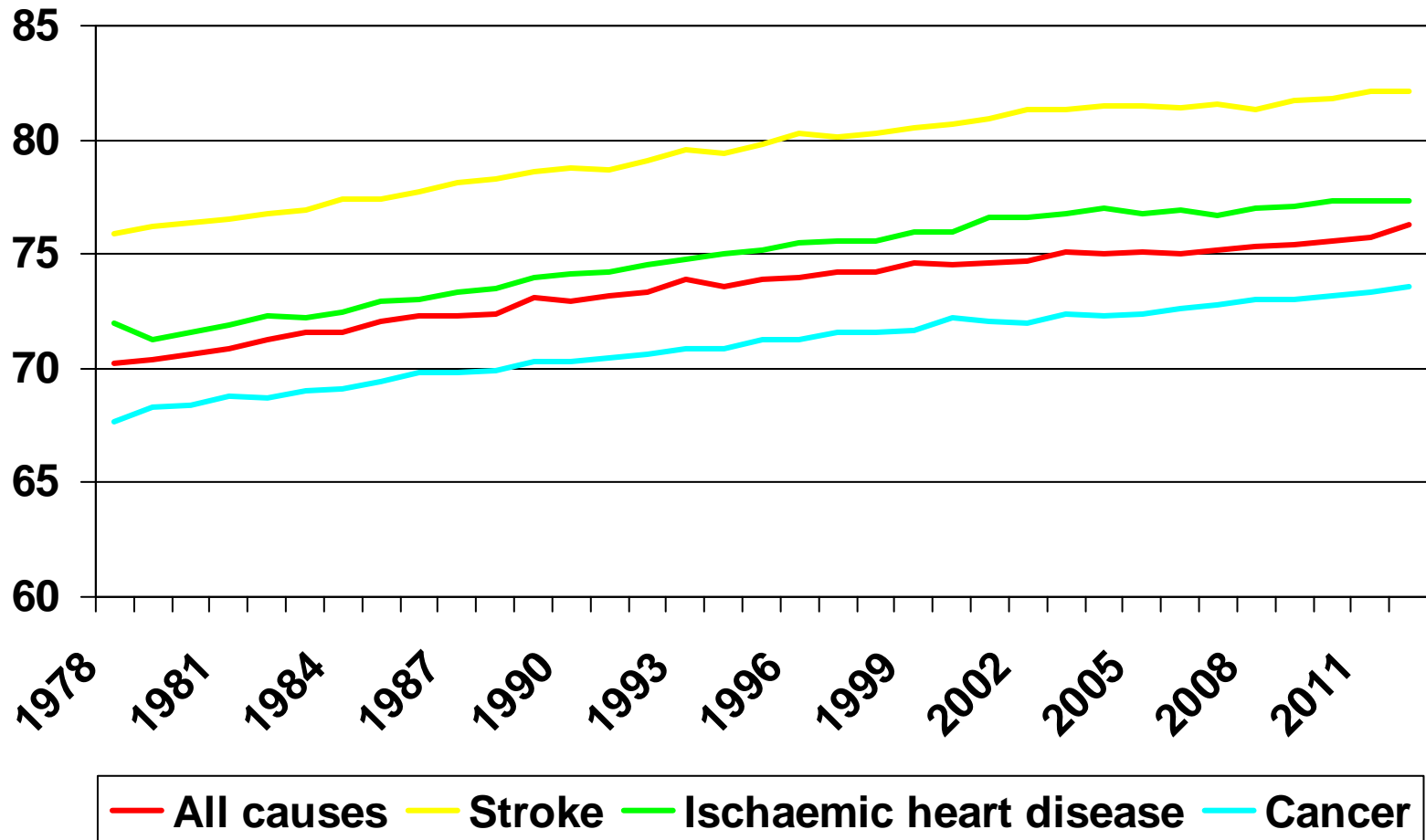
Total Fertility Rate, Scotland and selected European Union countries, 2011



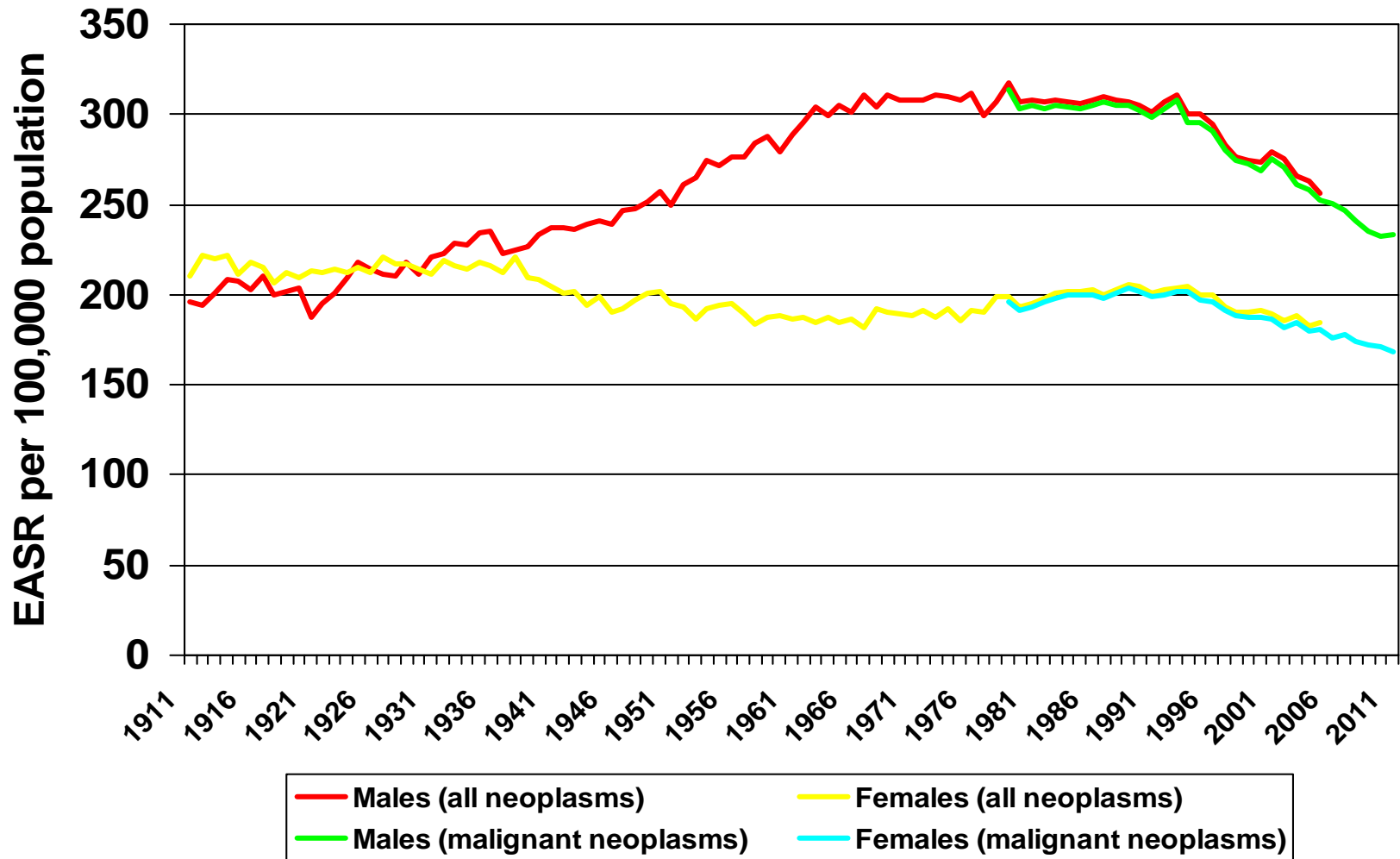
Live births per 1,000 women, by age, selected years



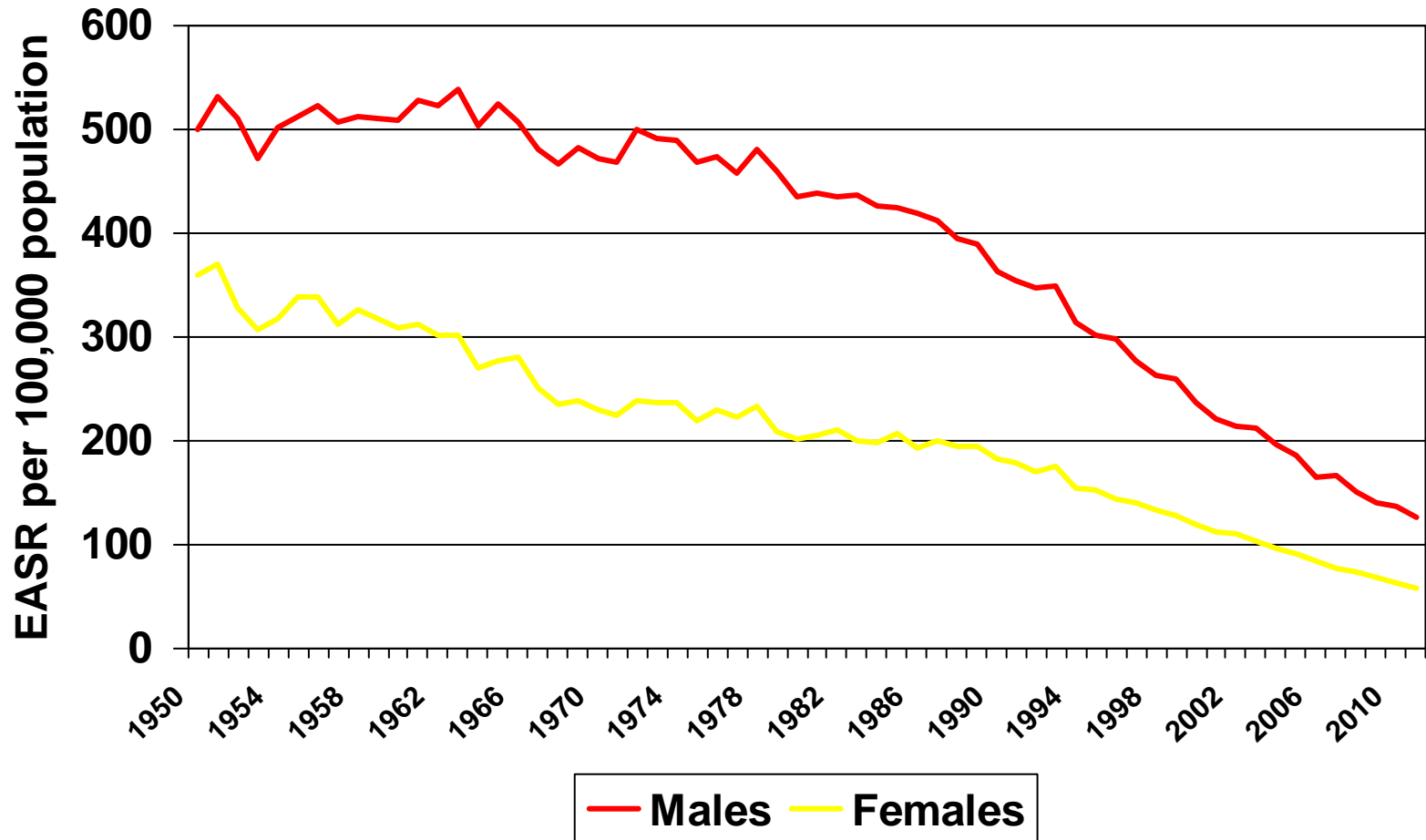
Average age at death, Scotland, selected causes, 1978 - 2012



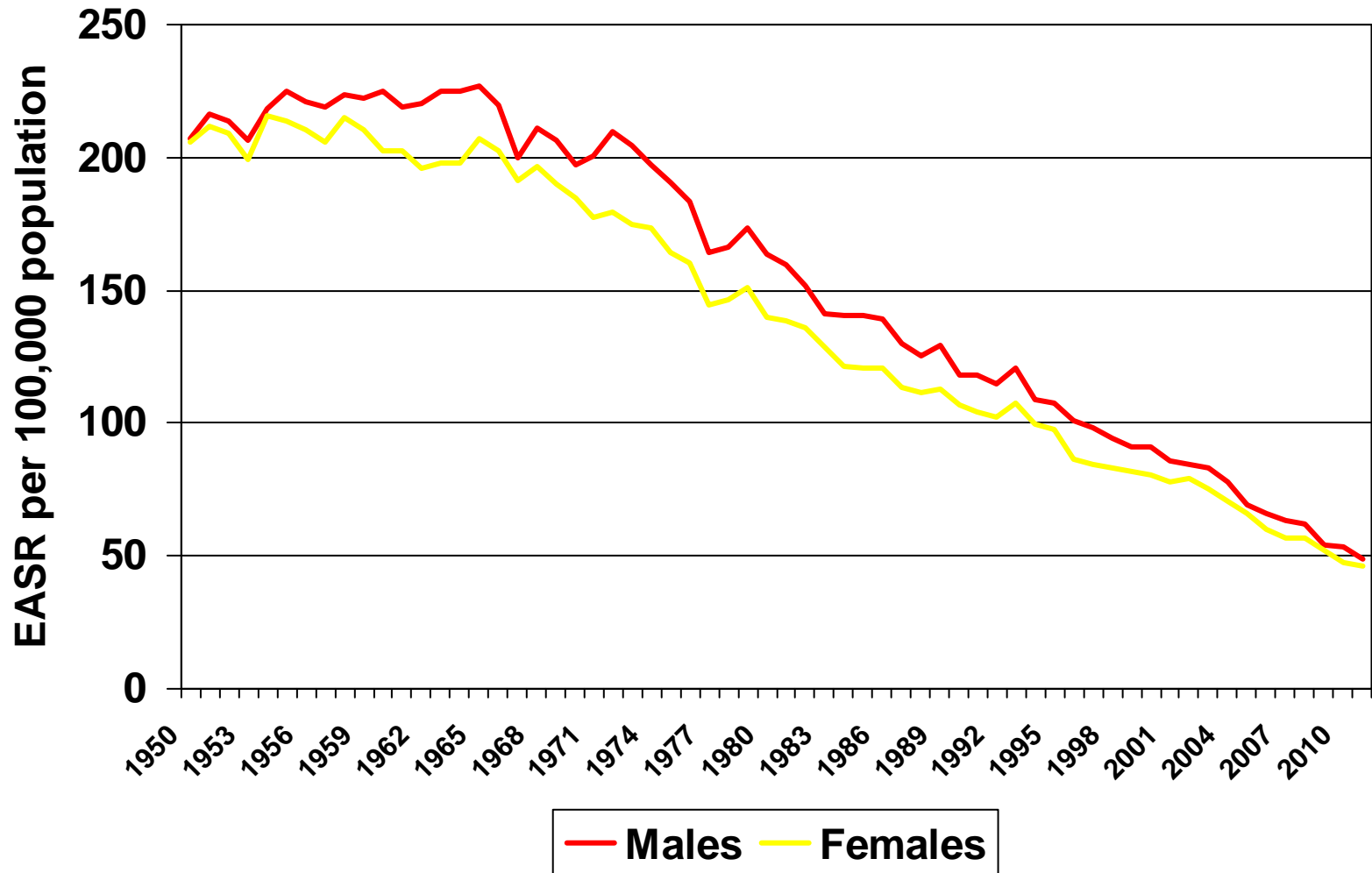
Age Standardised Cancer Mortality, all ages



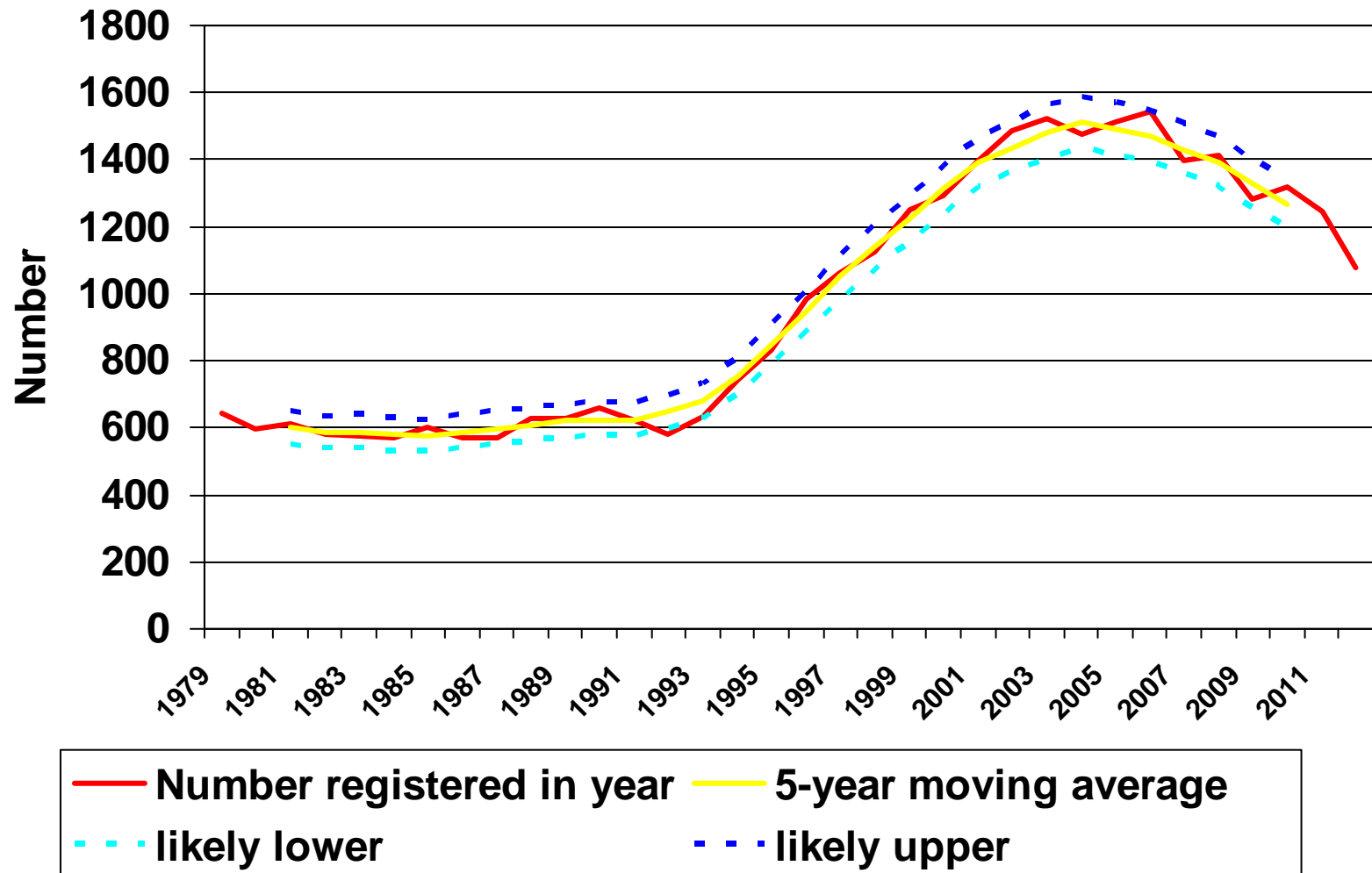
Age Standardised Ischaemic Heart Disease Mortality, all ages



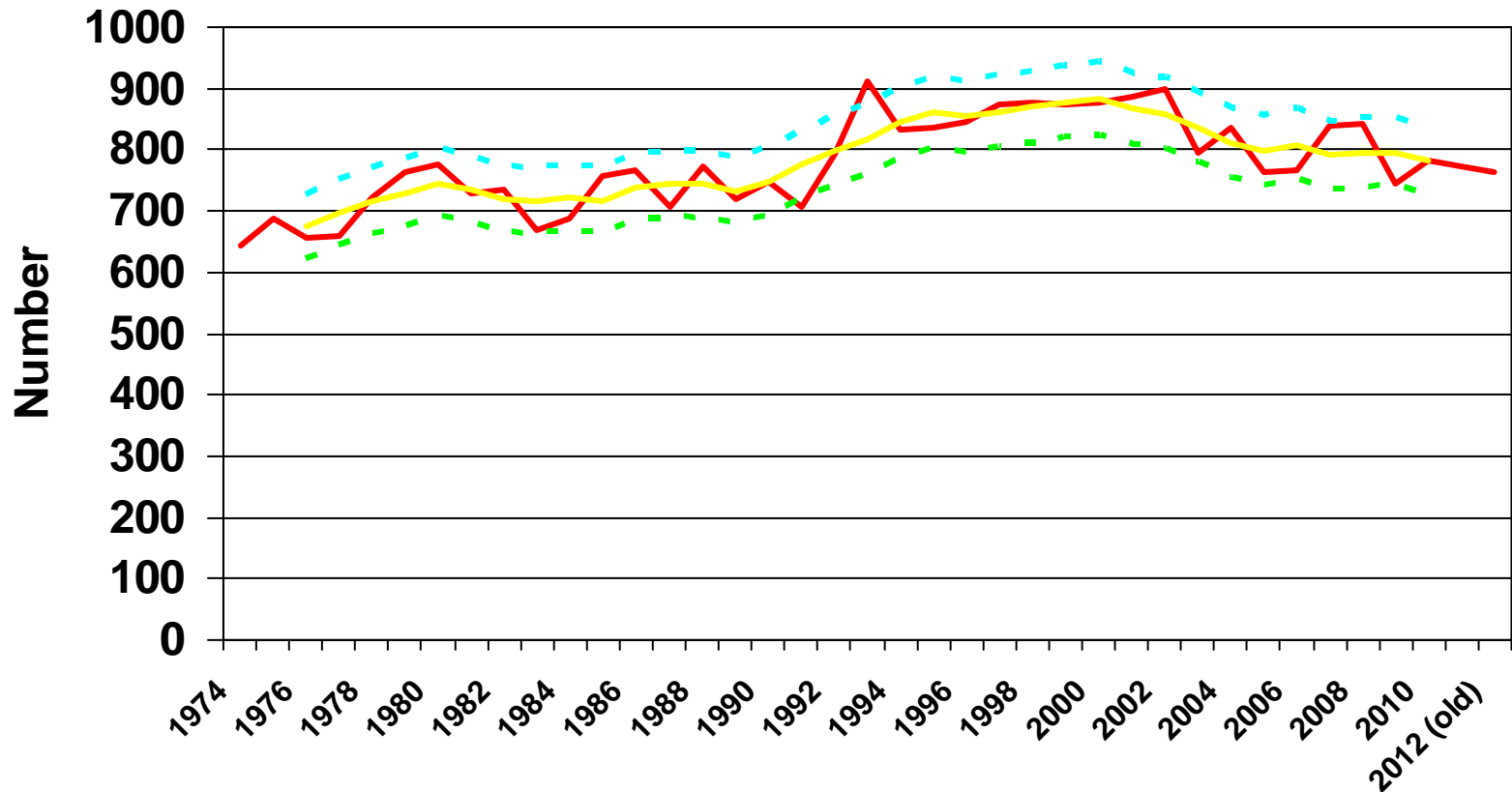
Age Standardised Stroke Mortality, all ages



Alcohol-related Deaths, 1979-2012



Probable Suicides, 1979 - 2012



— Number registered in year — 5-year moving average
- - likely lower - - likely upper

Vital Events Publications

- Quarterly Births, Deaths & Marriages (June, Sept, Dec, Mar)
- Preliminary Annual figures (Mar)
- Vital Events Reference Tables (Aug)
- Deaths from specific causes - Alcohol-related, drug-related, probable suicides, Clostridium Difficile (C.diff)/Meticillin-Resistant Staphylococcus Aureus (MRSA) (Aug)
- Winter Mortality (Oct)
- Babies' Names (Dec)

For more information please contact:
**National Records of Scotland Statistics
Customer Services**

email: customer@gro-scotland.gov.uk

Tel: 0131 314 4299