

Capacity Building in Local Authorities

Robert Raeside

r.raeside@napier.ac.uk



Knowledge Exchange into Public Policy: Using statistics to help local decision-making

Funded for 10 months by the Scottish Funding Council.

Aim: To exchange knowledge between Academia and Public Policy

Who is involved?

Academia

Professor Robin Flowerdew
University of St Andrews

Dr Robert Raeside Napier
University

Andrew Scott – RA Napier
University

Professor Paul Boyle – advisor
University of St Andrews

Public Policy Partners

Jennifer Boag Falkirk Council

Paul Davison Stirling Council

Chris Mitchell Fife Council

Bob Stead West Lothian Council

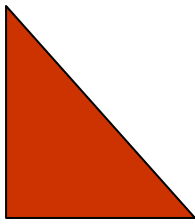
Jane McKenzie Improvement
Service

Scottish Government

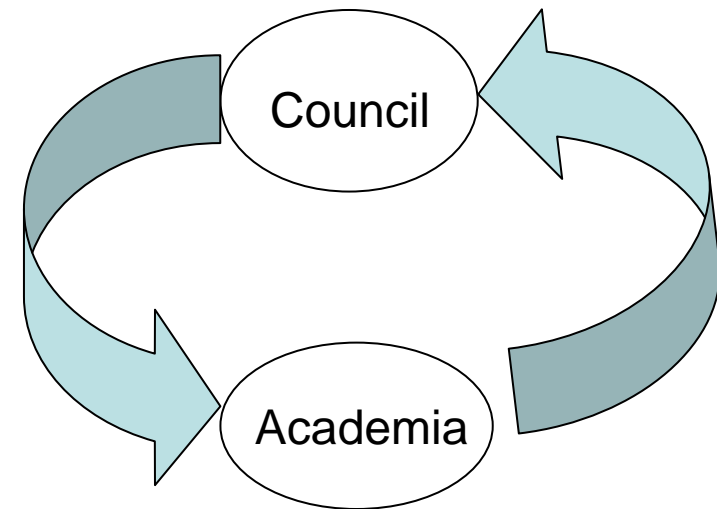
Sara Grainger and Marina Curran
Chief Statisticians Office



Aims



- Knowledge transfer
- Learn from Local Authorities
- Supply learning
- Improvement Service gives overview and helps with wider dissemination
- Aim to promote use of Scottish Government Data
 - hence SG involvement
 - also gives overview



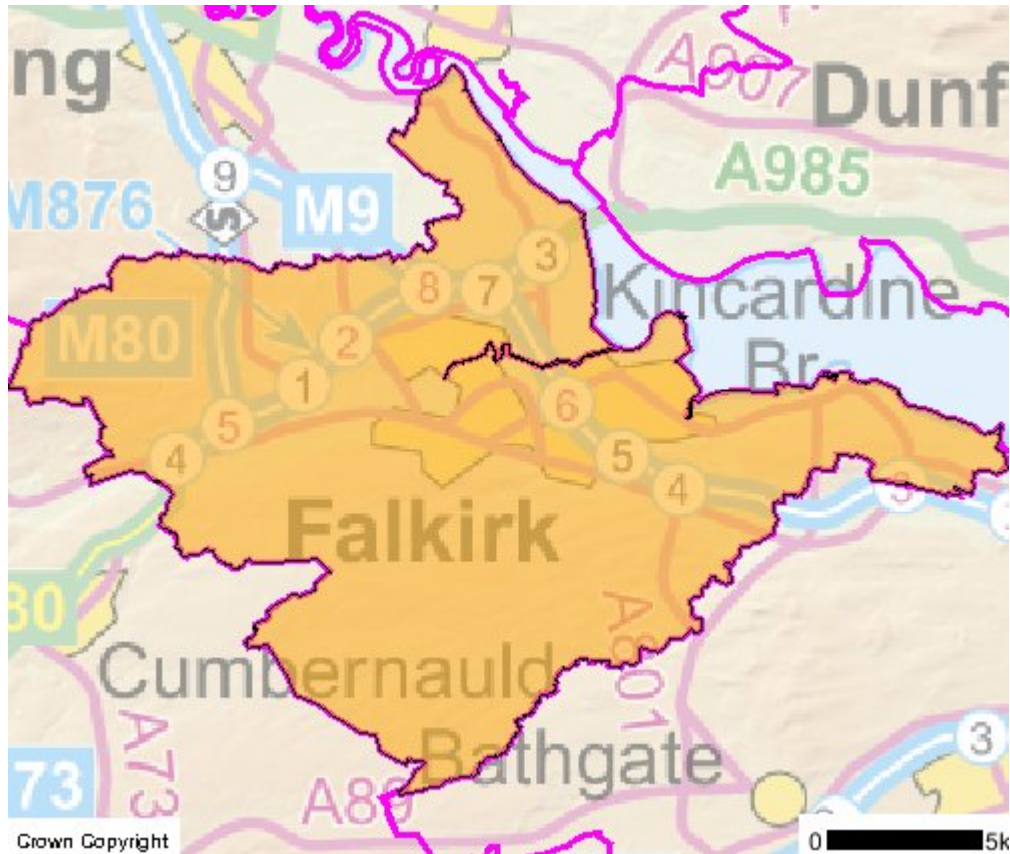
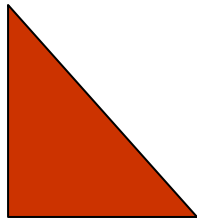


How

- Conduct mini projects – unique to each LA
- Develop these as case studies and exemplars
- Provide advice on the collection and use of data for monitoring purposes – SI, CP and SOA
- Introduce ideas of forecasting
- Create training/education materials
- Make available to all LA's on the Improvement Services web site.



Falkirk



Initial mini project

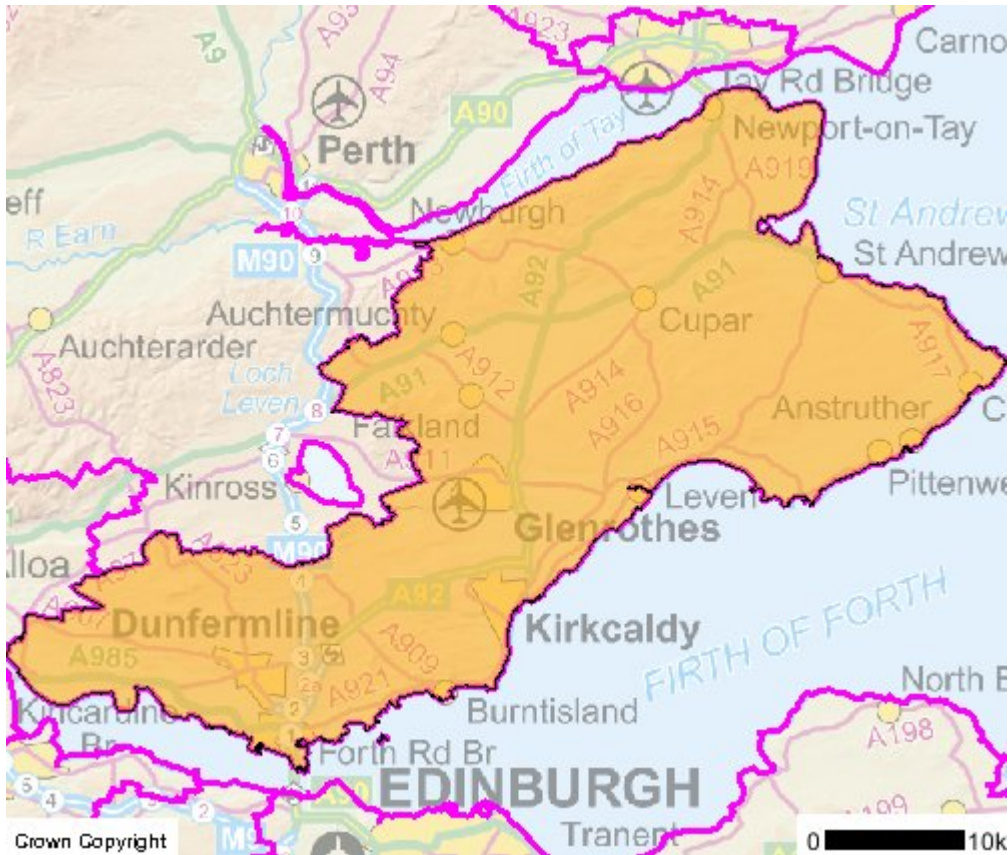
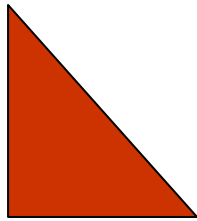
Analyse Housing Stock

Possible more complex project

Small area population projections



Fife



Initial Project

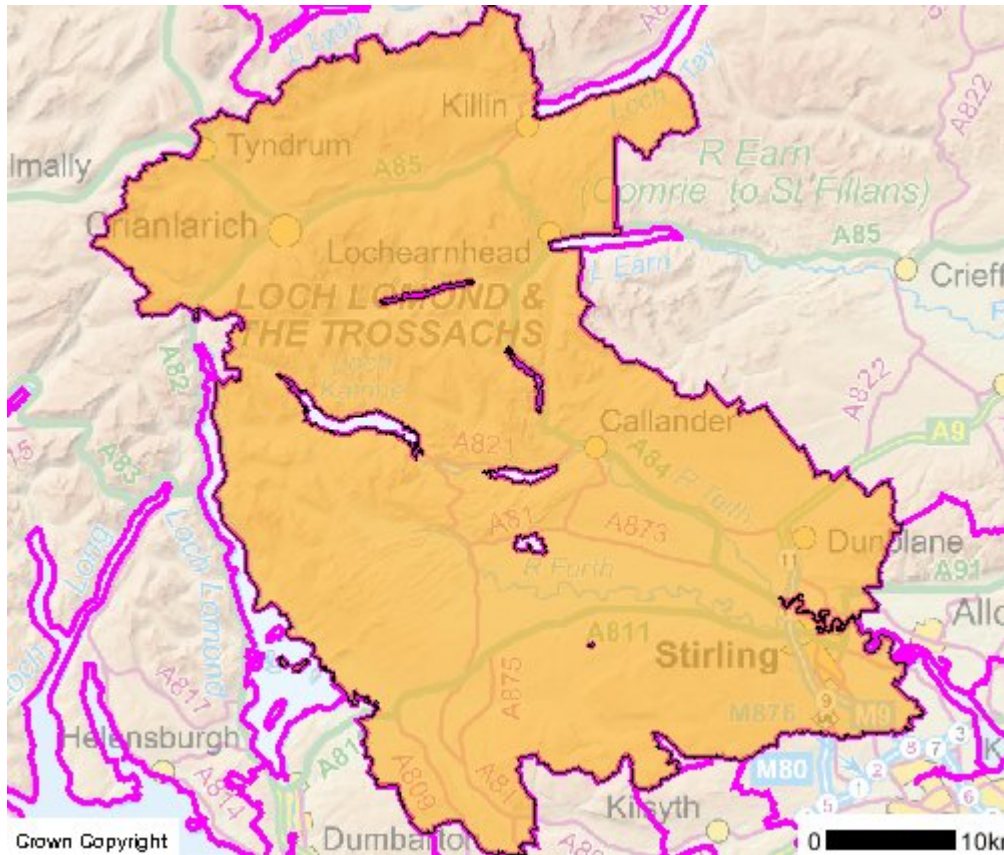
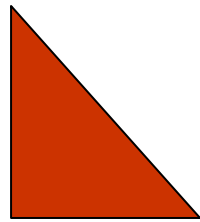
Assess amount and profile on immigrants in Fife – combine various sources of administrative data.

Possible more Complex project

Develop a carbon map of Fife



Stirling



Initial Mini Project

Profiling school catchment areas for social workers – problem of combining estimates from datazones made up of urban and rural areas.

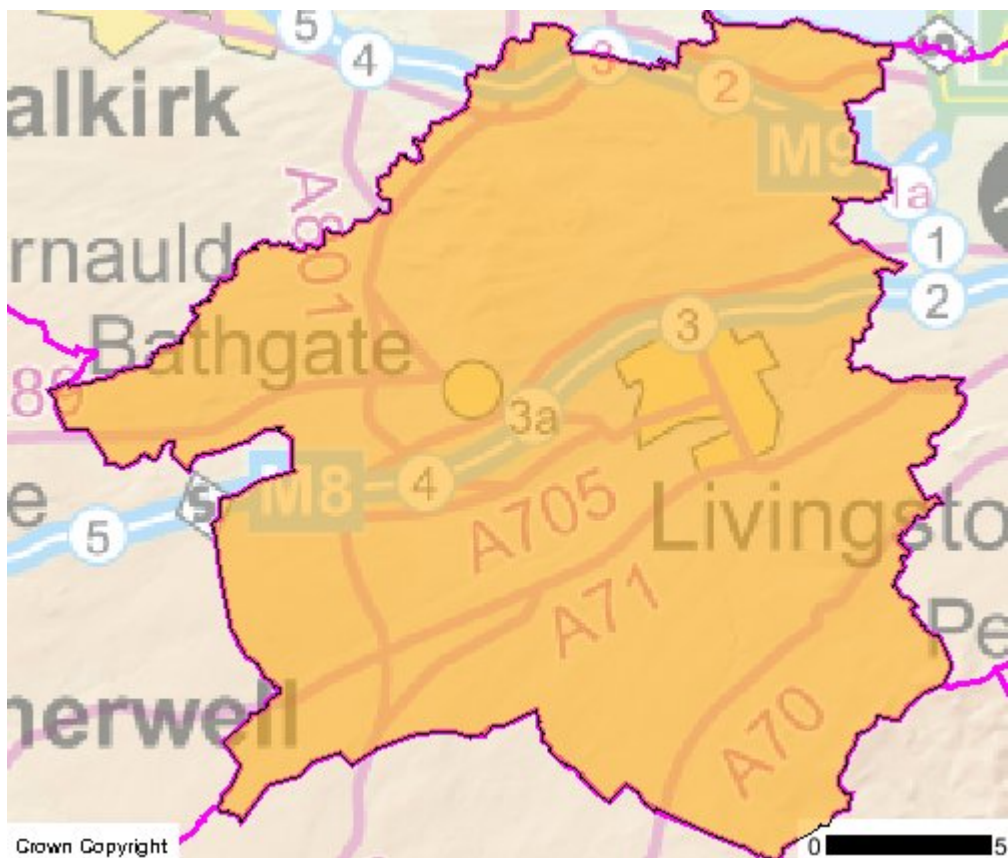
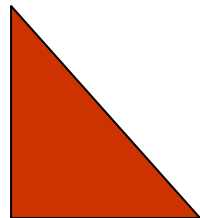
Possible more complex project

Develop a model to predict recycling rates

Evaluation of mobile Library service



West Lothian



Initial Mini Project

Use of indicators to predict outcomes in the Life Stage Model

Other potential projects

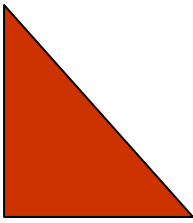
Develop life stage model

Produce projections of life expectancy for small areas



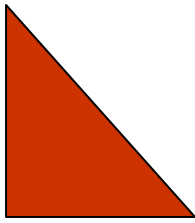
Unifying project

- Advice on performance measurement
- Review of measures
- Assess the value of indicators
- Consider if indicators can be more reliable
- Advise on reporting and practical points in using indicators
- Forecasting and target setting





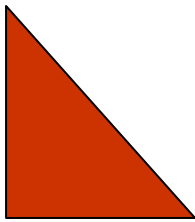
Education/Training



- Develop distance learning material and make available online
- Available to all, with completion of assessments it may be possible to obtain CPD rated qualifications
- More advanced material made available online
- Exemplars made available online
- General advice etc on indicators and their interpretation made available online



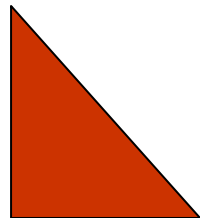
MSc Applied Statistics



- MSc at Napier being redesigned to make part time study more feasible
- Given a National and Local Government focus
- Complete seven modules and a dissertation – can do in two years.
- Modules in
 - Data Analysis and Survey Analysis
 - Statistical Modelling
 - Statistical Computing or GIS
 - Forecasting and Scenario Analysis
 - Official Statistics
 - Statistical Inference (Theory)
 - Research Methods and Consultancy Skills
- Will start September 2009 – but material available for inspection much earlier.



KnowFife Event



‘RESEARCH EVIDENCE FOR WISER ORGANISATIONS’

Fife’s 5th Research Fair

Wednesday 19th November 2008. 9.00am - 4.00pm

Vine Venue Dunfermline KY11 4JU

Contact Chris Mitchell chris.mitchell@fife.gov.uk

www.fifedirect.org.uk/knowfife