

Population and Migration Statistics

23 February 2010

Population & Migration Statistics
General Register Office for Scotland (GROS)



General Register Office
for
SCOTLAND
information about Scotland's people

Presentation overview

- Description of current outputs & publications
- Examples of data/analysis
- Recent/forthcoming developments
- Questions?



Population estimates

- Mid-year (30 June) population estimates for Scotland
 - Council areas and NHS Board areas
 - Single year of age (0-89, 90+)
 - Sex



Births



Deaths



Migration



Small Area Population Estimates

Mid-year (30 June) population estimates for:

Data zones - annually

- 5-year age group (Single year of age available on request) & Sex

Settlements and localities – biennial

- No age / sex breakdown



Special Area Population Estimates

- Westminster Parliamentary Constituencies updated with mid-2007 and mid-2008 data
- Nomenclature of Units for Territorial Statistics (NUTS) (2,3 and 4/LAU1)
- Urban Rural (6 and 8-fold)
- Scottish Index of Multiple Deprivation (SIMD) deciles

covering mid-2001 to mid-2008



General Register Office
for
SCOTLAND
information about Scotland's people

<p>General Register Office for Scotland website</p> <p>www.nrscotland.gov.uk</p>	<p>Scottish Neighbourhood Statistics website</p> <p>www.sns.gov.uk</p>
Scotland	Scotland
NUTS	NHS Board
Urban/Rural	Local Authority
SIMD deciles	Community Health Partnership
NHS Board	Scottish Parliamentary constituency
Local Authority	Multi-member ward
Westminster Parliamentary Constituency	Intermediate zone
Data Zone	Community Regeneration areas
	Local Regeneration areas
	Data Zone

Population Estimates for Special Populations

- Centenarians (also population aged 90-99)
- Marital Status to be updated following 2009-Mid-year Estimates (MYE)
 - Both available at Scotland-level only -
- Population by Country of Birth and Nationality
Source: Annual Population Survey



File Edit View Insert Format Tools Data Window Help

Draw AutoShapes

http://www.gro-scotland.gov.uk/files2/stats/population-estimates/

A1		D	E	F	G	H	I	J	K	L	M	N	O	P	S	T	U	V	W	X	Y	Z	AA	AE	AC	AD	AE	AF
----	--	---	---	---	---	---	---	---	---	---	---	---	---	---	---	---	---	---	---	---	---	---	----	----	----	----	----	----

Table 3: Estimated population resident in Scotland, by council area and country of birth,^{1-4,5}

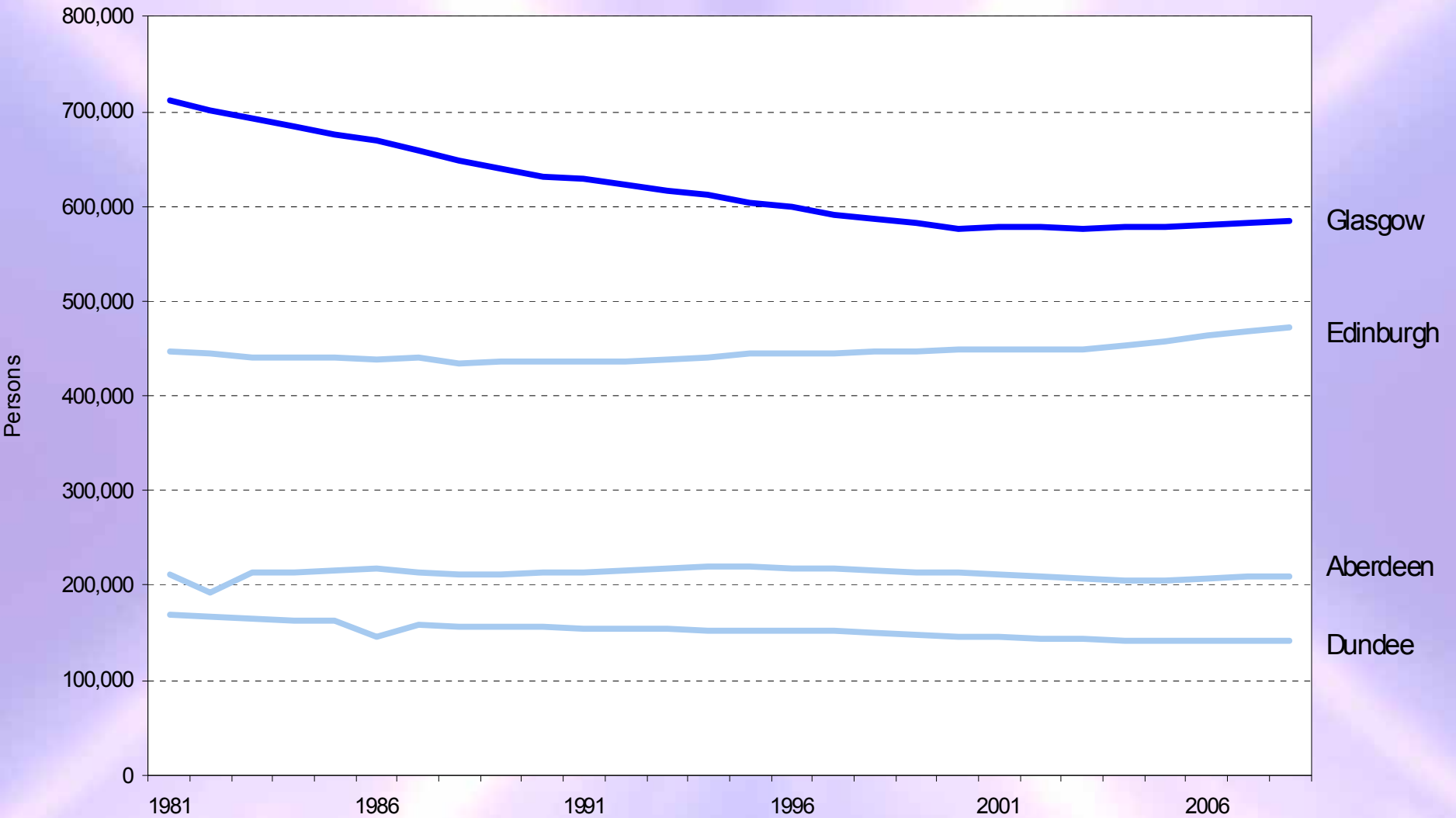
thousands

Country of Birth	Country of Birth															
	United Kingdom								Non United Kingdom							
	July 2007 to June 2008		October 2007 to September 2008		January 2008 to December 2008		April 2008 to March 2009		July 2007 to June 2008		October 2007 to September 2008		January 2008 to December 2008		April 2008 to March 2009	
	estimate	CI +/-	estimate	CI +/-	estimate	CI +/-	estimate	CI +/-	estimate	CI +/-	estimate	CI +/-	estimate	CI +/-	estimate	CI +/-
Scotland	4,827	69	4,817	69	4,816	70	4,797	70	260	16	279	17	289	17	295	17
Aberdeen City	182	16	181	16	181	16	177	16	23	6	24	6	24	6	27	6
Aberdeenshire	227	17	225	17	224	17	224	17	10	4	12	4	14	4	13	4
Angus	104	7	104	7	104	8	104	8	4	2	4	2	5	2	5	2
Argyll & Bute	.	.	85	6	85	6	85	6	.	.	3	1	4	1	4	1
Clackmannanshire
Dumfries and Galloway
Dundee City	132	10	131	10	132	10	131	10	9	2	9	3	9	3	9	3
East Ayrshire
East Dunbartonshire	99	8	99	8	100	8	99	8	5	2	5	2	5	2	5	2
East Lothian	89	7	89	7	89	7	89	7	4	1	4	1	4	1	4	1
East Renfrewshire	85	6	85	6	85	6	85	7	3	1	3	1	3	1	3	1
Edinburgh, City of	414	35	413	34	407	34	409	34	50	12	53	12	60	13	56	13
Eilean Siar
Falkirk
Fife
Glasgow City	522	37	516	36	517	37	511	36	55	12	62	13	62	13	66	13
Highland	207	16	8	3	.	.
Inverclyde
Midlothian
Moray	82	6	82	6	82	6	82	6	4	1	3	1	4	1	4	1
North Ayrshire
North Lanarkshire
Orkney Islands
Perth and Kinross	133	10	133	9	133	9	132	9	6	2	6	2	7	2	8	2
Renfrewshire	161	12	160	12	159	12	159	12	7	2	8	3	9	3	8	3
Scottish Borders	106	8	106	8	106	8	105	8	4	2	4	2	4	2	5	2
Shetland Islands

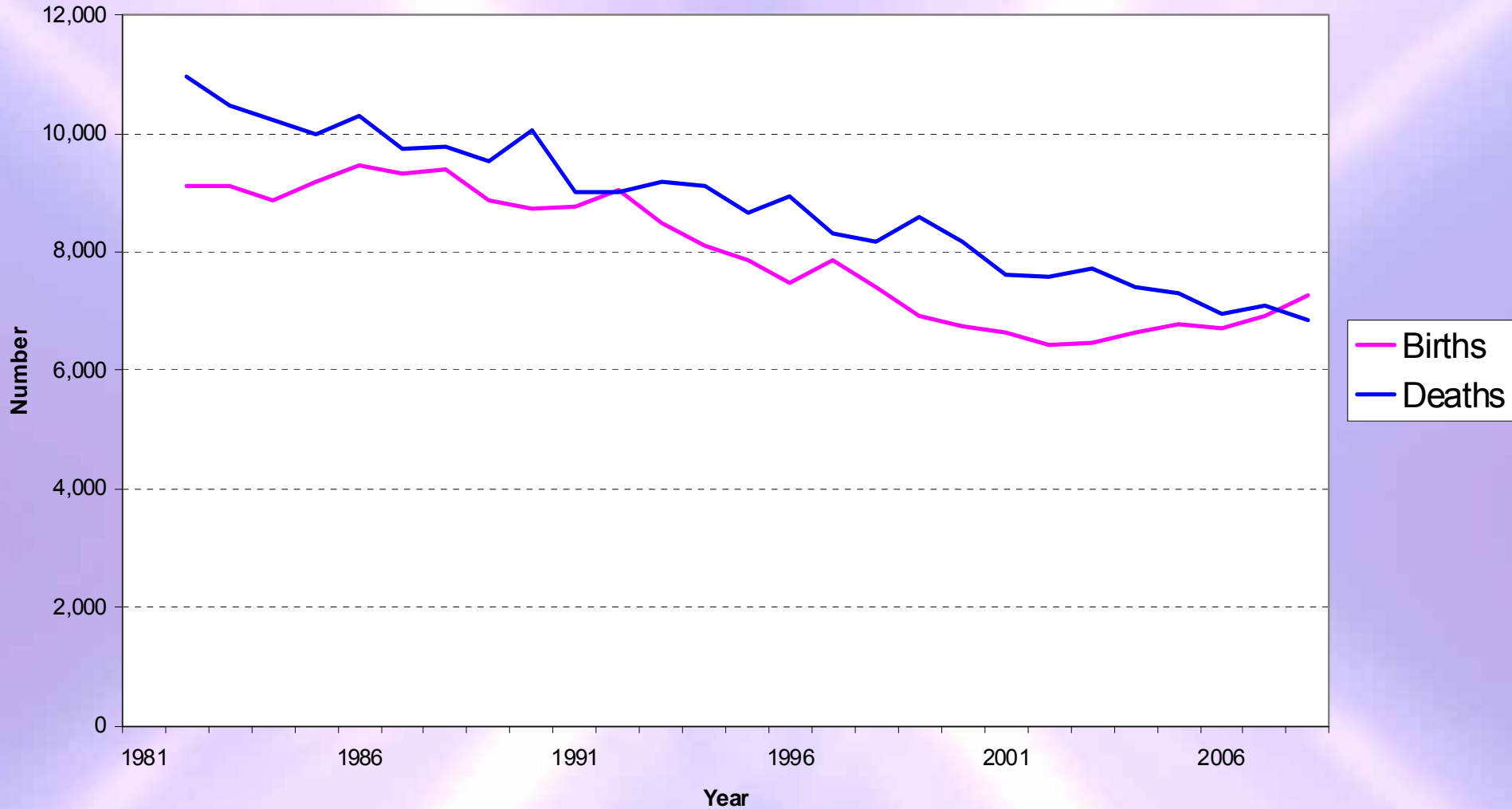
Country of Birth

Navigation icons: back, forward, search, etc.

Population of Scotland's city councils, 1981-2008

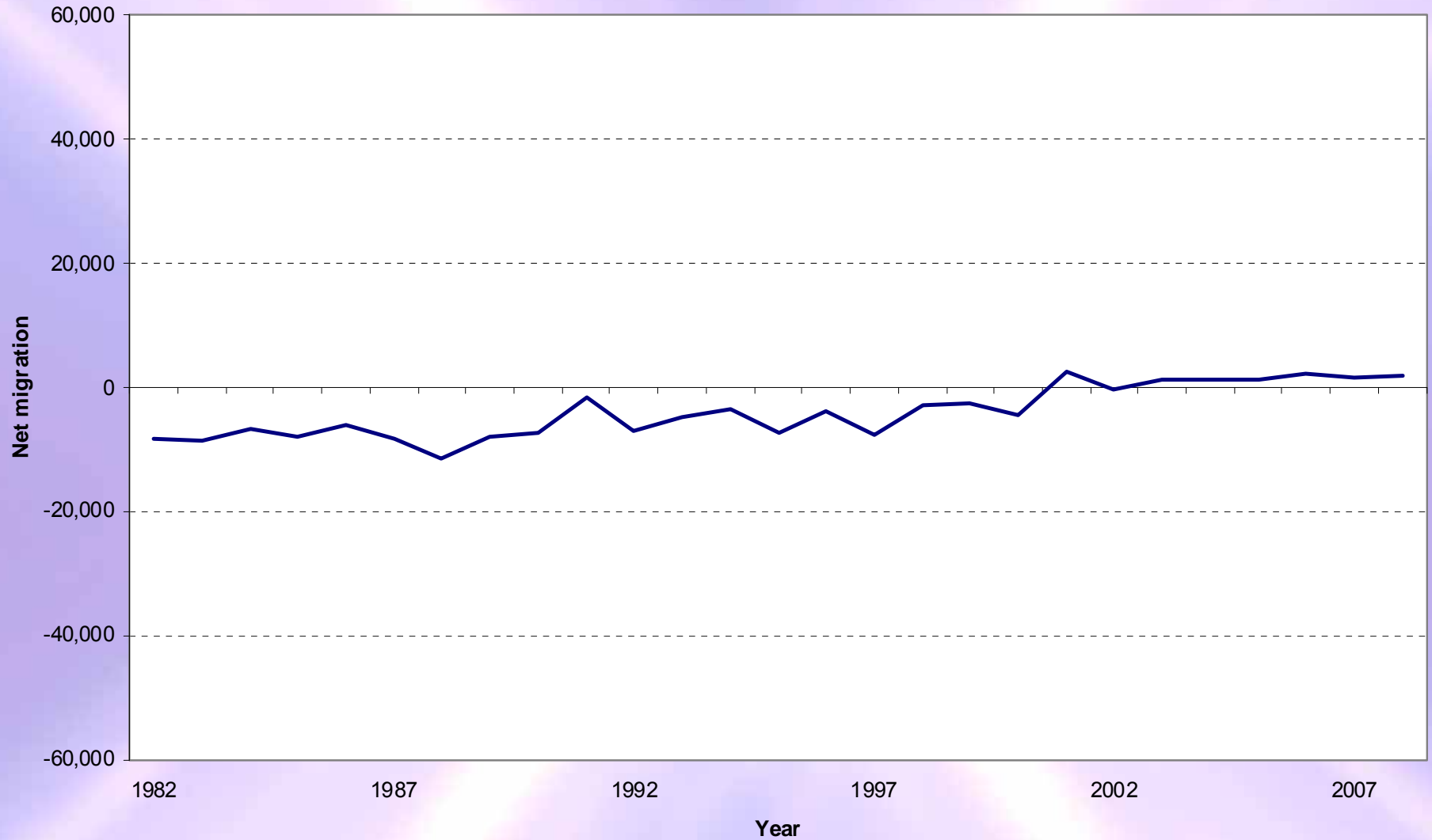


Births and deaths, Glasgow City council area, 1981-2008

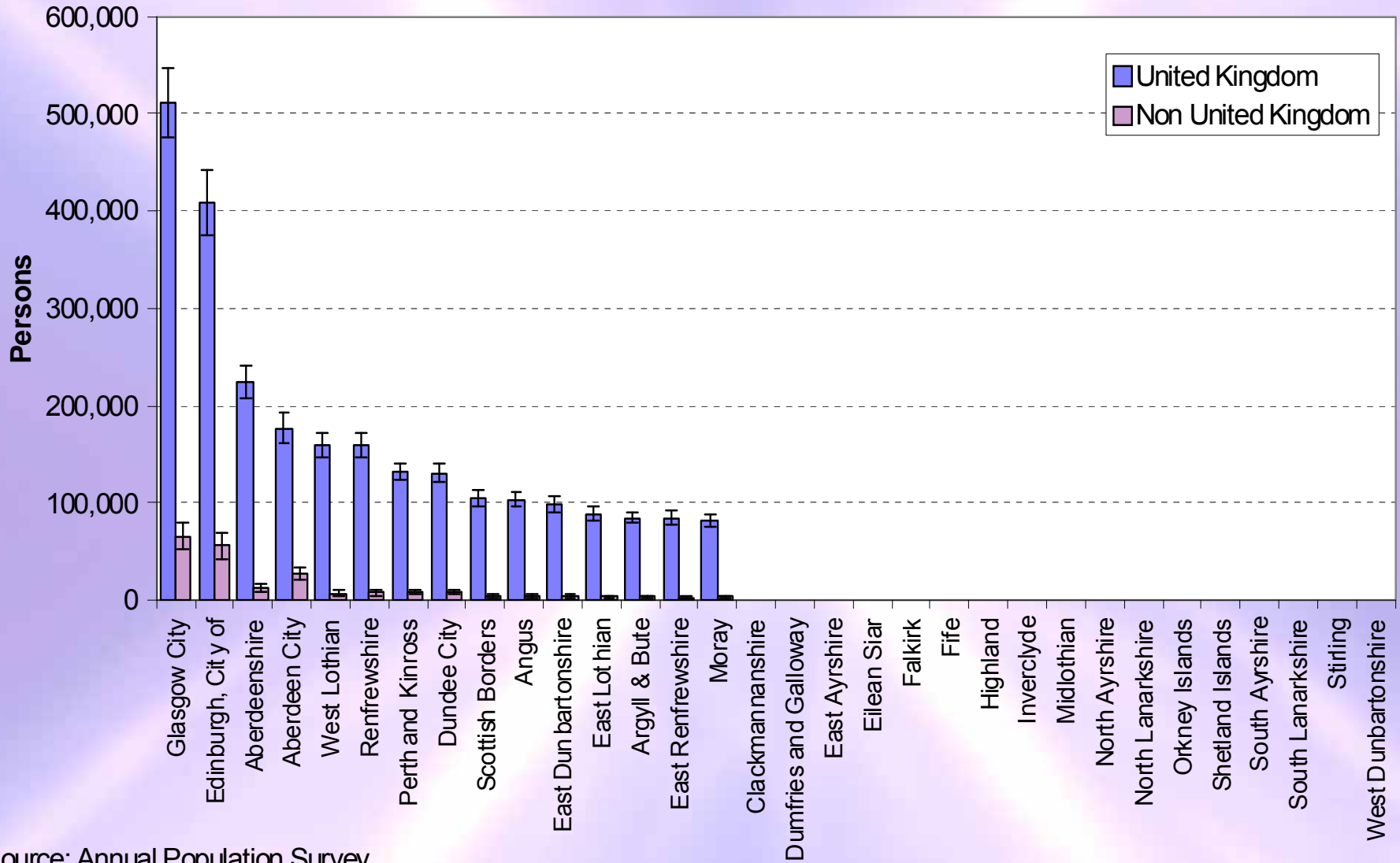


General Register Office
for
SCOTLAND
information about Scotland's people

Net migration, Glasgow City, 1981/82 - 2007/08



Estimated number of residents in Scotland in the year ending March 2009, by country of birth, with 95% confidence intervals



Source: Annual Population Survey



General Register Office
for
SCOTLAND
information about Scotland's people

Life expectancy - Published statistics

Scottish Interim Life Tables (*single year of age*)

Council area
NHS Board area
(*grouped ages*)

Community Health Partnerships
Urban/Rural categories
Deprivation categories
(*grouped ages*)

Scottish Parliamentary Constituency
Council Area split by deprivation
Life expectancy at birth only

Intermediate Zone
(previously Information Services Division
(ISD) now GROS)
Life expectancy at birth only

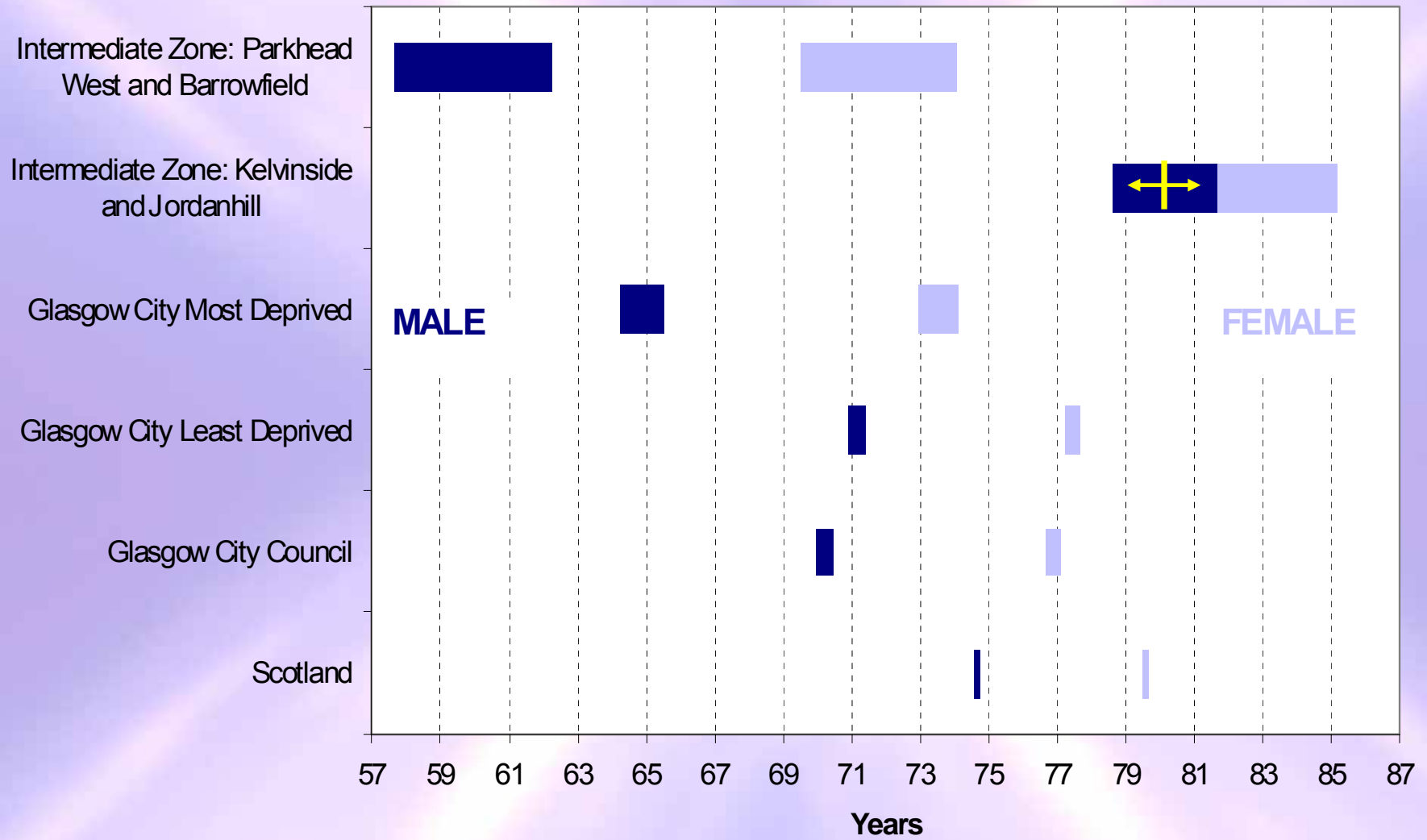


Life expectancy Methodology

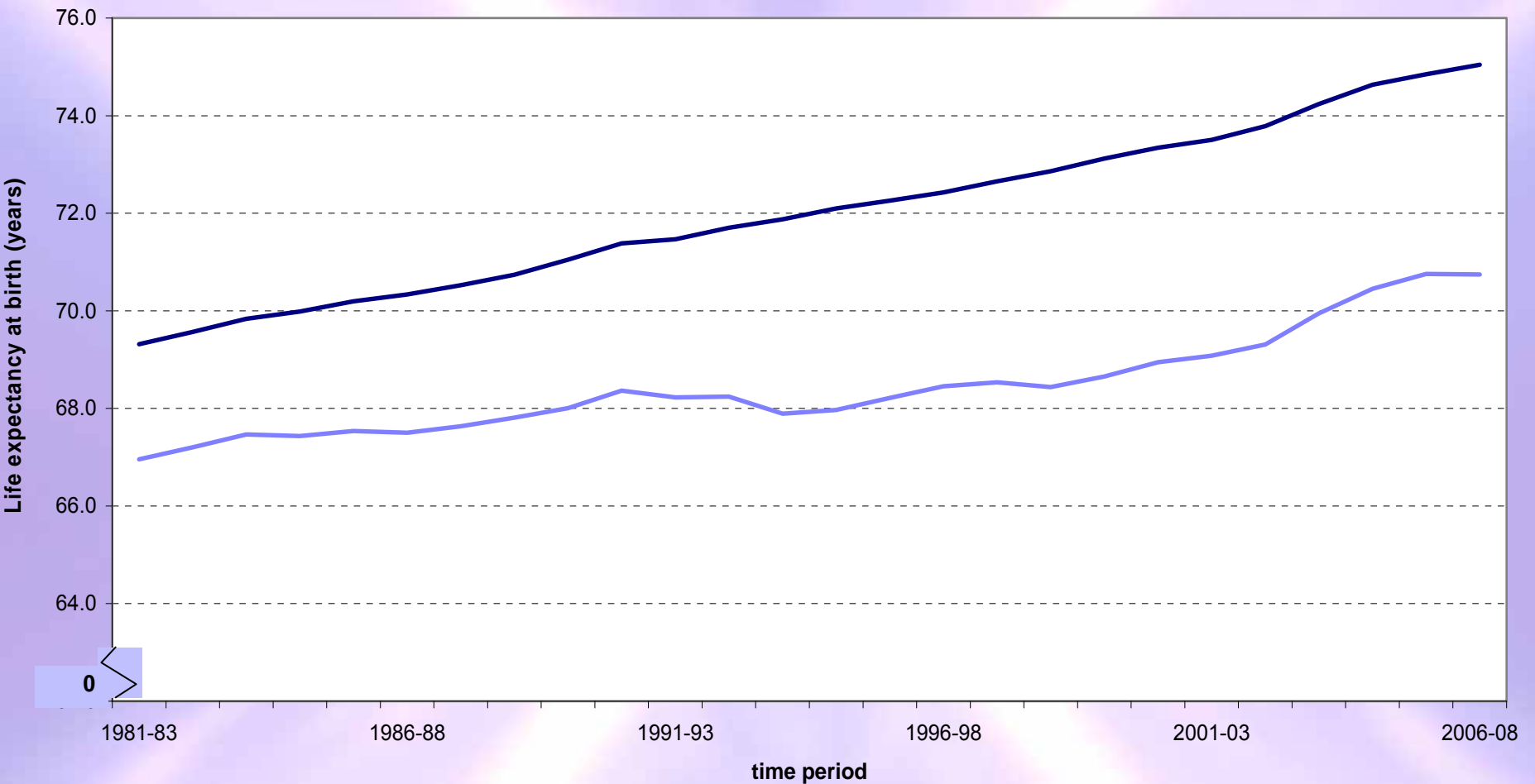
- Deaths < 40 and/or population < 5,000 = non-robust results!
- Smaller the geography gets the less reliable the estimates become.



Life Expectancy with 95% confidence intervals, for a selection of geographies



Life expectancy at birth in Glasgow city and Scotland, 1981-1983 to 2006-2008, MALES



— Glasgow City council — Scotland



General Register Office
for
SCOTLAND
information about Scotland's people

Developments



General Register Office
for
SCOTLAND
information about Scotland's people

Mid-year population estimates & migration

- Improvements to International Passenger Survey (IPS) data & National Health Service Central Register (NHSCR) data
- Short-term migration (feasibility study)
- Quality measures (feasibility study)



Council fact sheets

(additional presentation of demographic statistics)

Microsoft Office Word 2003 interface showing a document titled "Glasgow City Council Area - Demographic Factsheet".

Glasgow City Council Area - Demographic Factsheet

Last updated: _____
Next update due: _____

The 2008 population figure for Glasgow City is 584,240, an increase of 0.4 per cent from 581,940 in 2007. The population of Glasgow City accounts for 11.3 per cent of the total population of Scotland. In Glasgow City, 24.1 per cent of the population are aged 16 to 29 years. This is larger than Scotland where 18.4 per cent are aged 16 to 29 years. Persons aged 60 and over make up 18.6 per cent of Glasgow City. This is smaller than Scotland where 22.6 per cent are aged 60 and over. Since 1962, Glasgow City's population has fallen overall. This trend is not mirrored nationally.

Estimated population of Glasgow City and Scotland, by age group, 2008

Age Band	Male pop. Glasgow City	Female pop. Glasgow City	Total pop. of Glasgow City	% of total pop. of Glasgow City	Age Band	Male pop. Scotland	Female pop. Scotland	Total pop. of Scotland	% of total pop. of Scotland
0-15	49,237	47,093	96,330	16.5%	0-15	467,540	445,950	913,490	17.7%
16-29	70,855	69,920	140,775	24.1%	16-29	485,333	467,608	952,941	18.4%
30-44	65,223	66,464	131,687	22.5%	30-44	514,880	550,393	1,065,273	20.6%
45-59	51,826	55,092	106,918	18.3%	45-59	519,681	548,193	1,067,874	20.7%
60-74	31,241	37,867	69,108	11.8%	60-74	365,362	410,381	775,743	15.0%
75+	13,327	26,095	39,422	6.7%	75+	147,476	245,703	393,179	7.6%
All ages	281,776	302,464	584,240	100.0%	All ages	2,500,272	2,668,228	5,168,500	100.0%

Estimated population of Glasgow City by age and sex, 30 June 2008

Estimated population of Glasgow City and Scotland, 1982-2008 ('000s)

Main page | Data sources

Finding your way round the population and migration estimates

- Population web pages re-design (end of February 2010)
 - Mid-year population estimates
 - Special area population estimates
 - Estimates of special populations
- Migration web pages developed www.gro-scotland.co.uk/statistics/migration
- Migration web pages now include migration reports developed last year, July 2009, updated annually



Migration Reports

“Glasgow and the Clyde Valley Migration Report”

**Glasgow City
Inverclyde
East Dunbartonshire
West Dunbartonshire
East Renfrewshire
Renfrewshire
North Lanarkshire
South Lanarkshire**

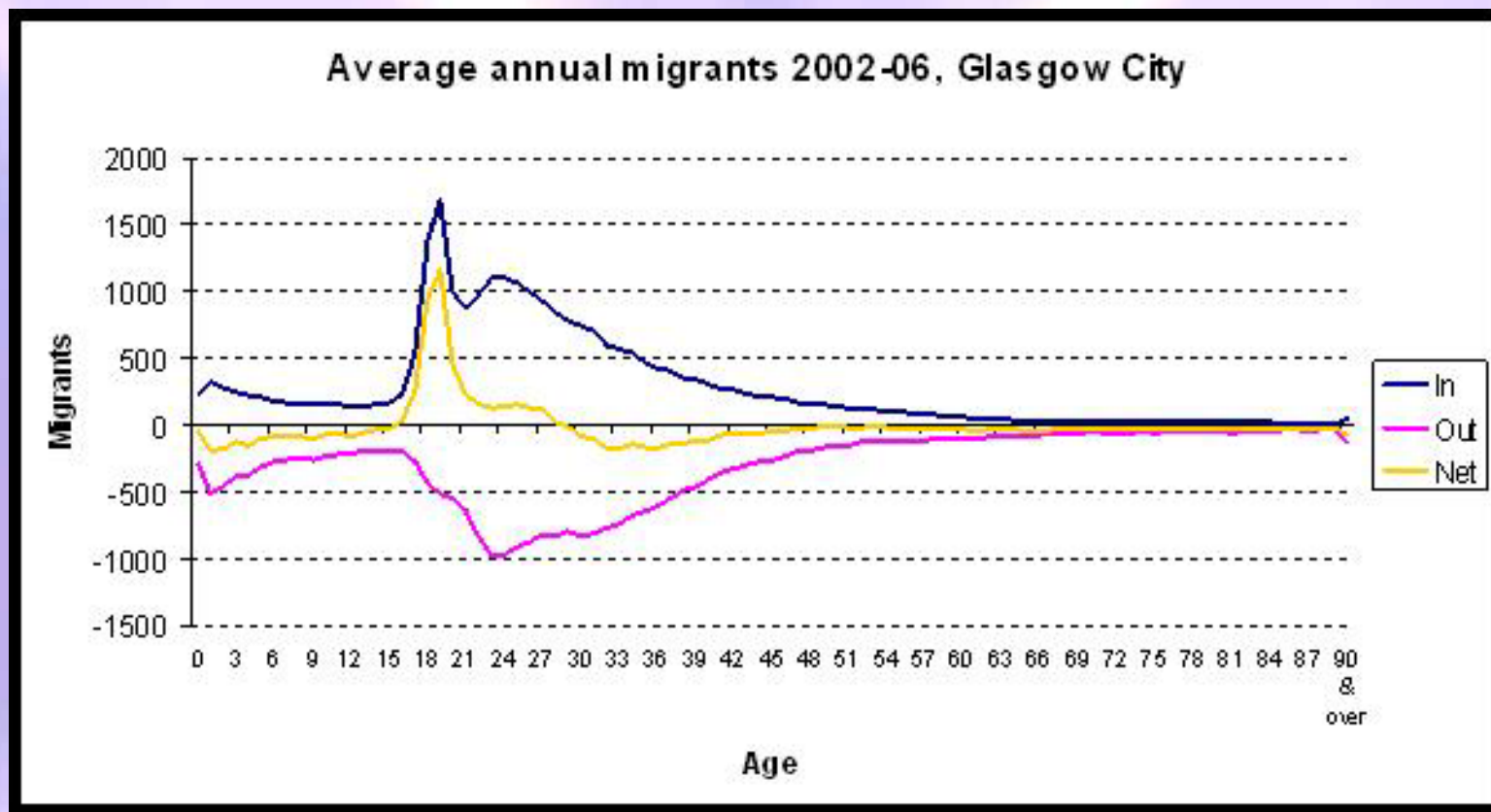
[http://www.gro-scotland.gov.uk/statistics/migration/
local-area-migration-reports.html](http://www.gro-scotland.gov.uk/statistics/migration/local-area-migration-reports.html)



**General Register Office
for
SCOTLAND**
information about Scotland's people

“Glasgow and the Clyde Valley Migration Report”

GROS in, out, net migration statistics



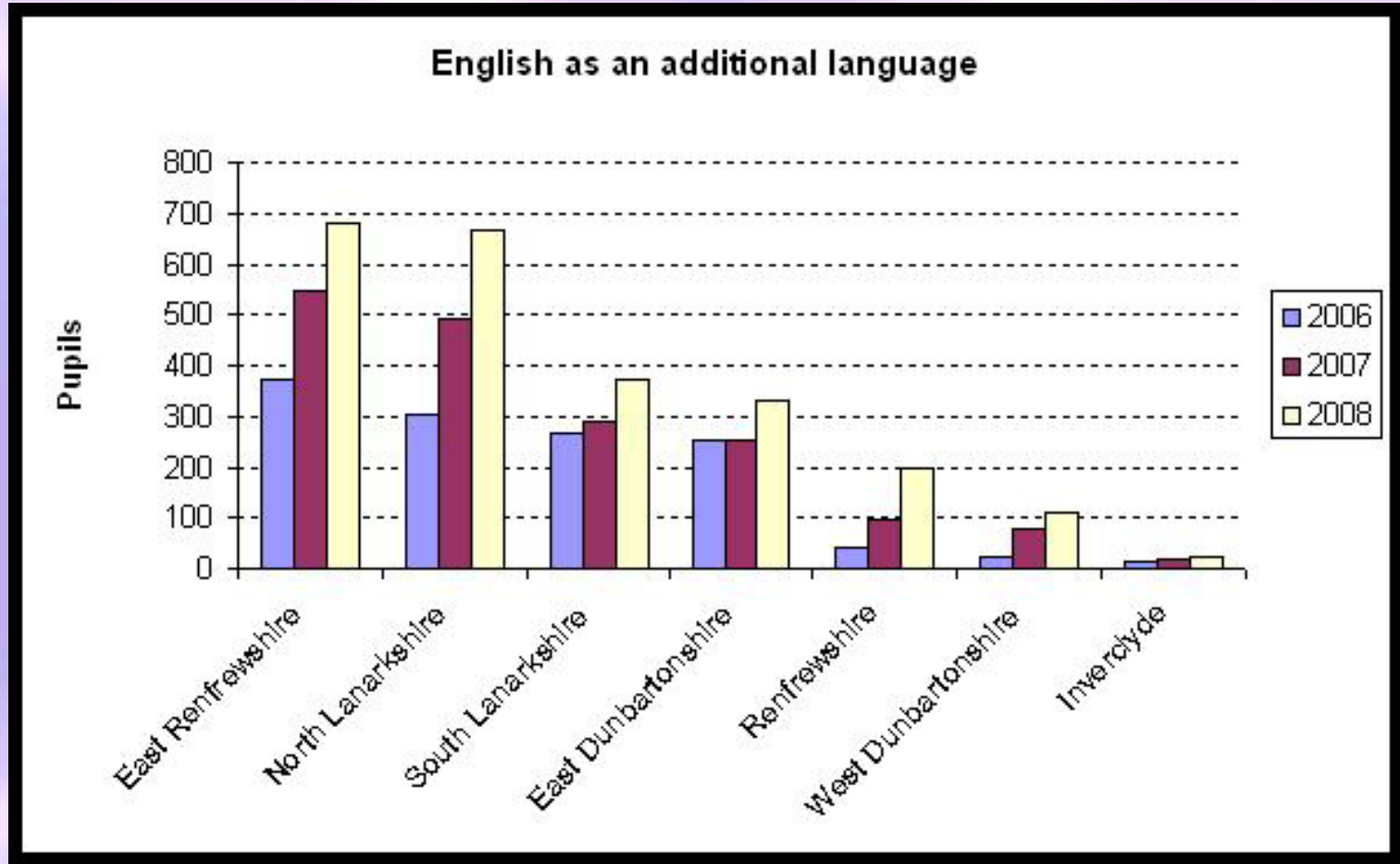
Source: GROS



General Register Office
for
SCOTLAND
information about Scotland's people

“Glasgow and the Clyde Valley Migration Report”

School Census



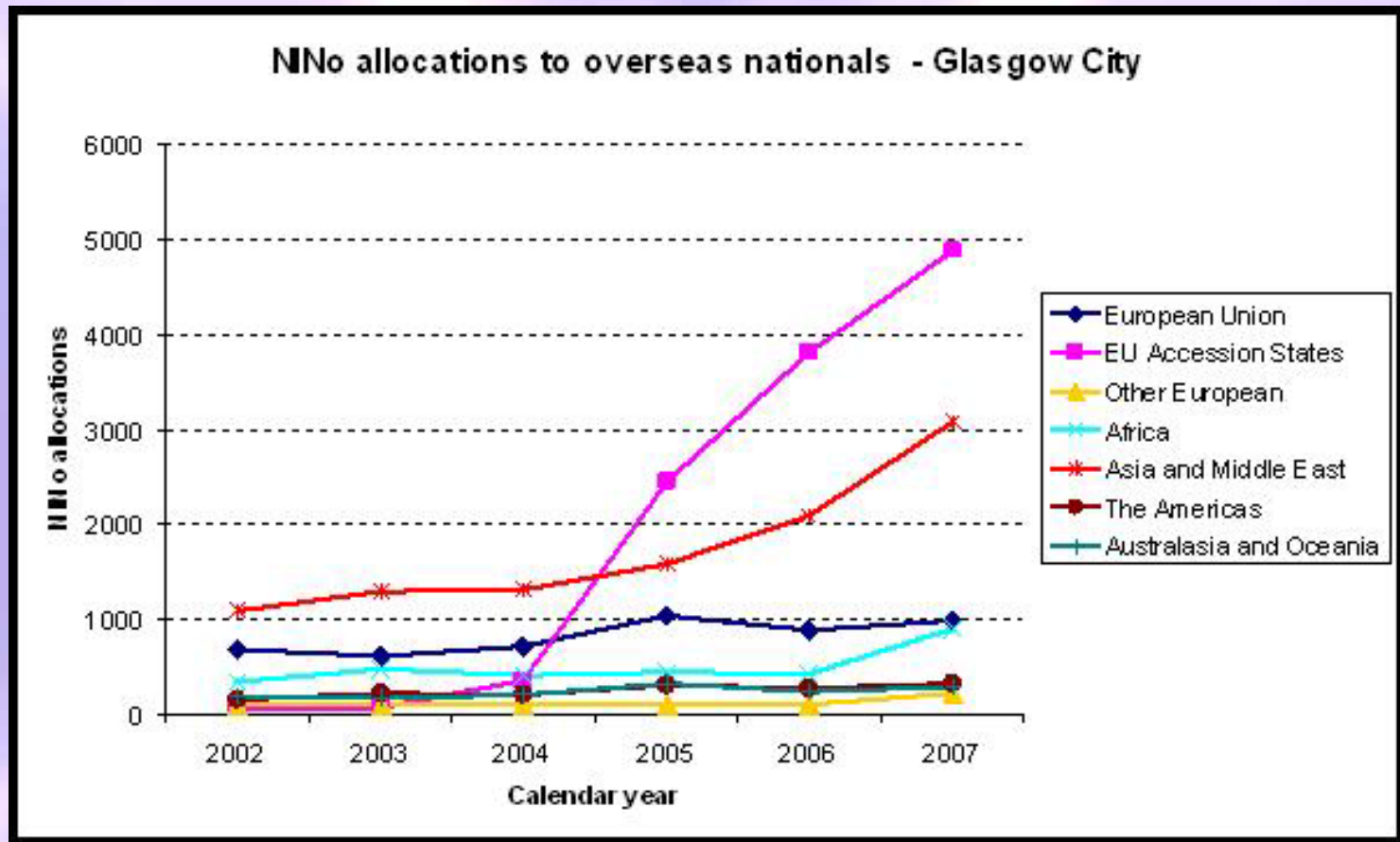
Source: Pupil census



General Register Office
for
SCOTLAND
information about Scotland's people

“Glasgow and the Clyde Valley Migration Report”

National Insurance Number allocations



Source: DWP



General Register Office
for
SCOTLAND
information about Scotland's people

Population Estimates by Ethnic Group

- Scotland level
- 14 Category Ethnic Classification, age group and sex
- Mid-2001 to Mid-2009
- Aiming for release on July 2010 (conditional)
- 'Statistics in Development'
- Local data would be valuable



Any questions?

- We would welcome any comments or suggestions.
- Contact details
 - customer@gro-scotland.gsi.gov.uk
 - 0131 314 4299
- www.gro-scotland.gov.uk
- www.scotland.gov.uk/scotstat

