

# Finding the statistics you need - *Households and dwellings*

Esther Roughsedge

GROS: Household Estimates and Projections

30 April 2009



General Register Office  
*for*  
SCOTLAND  
*information about Scotland's people*

# Household projections

- Used in Development Plans to inform decisions about future housing and service need
  - Need to know projected number of households, and type.
- Based on population projections, with household trends projected from Census data.
- Produced every 2 years.
- Cover 25 years.



# Categories used

- Geographies:
  - 32 councils
  - 2 National Parks
  - 4 Strategic Development Planning Authority areas
- 7 household types:

1 adult (male)	1 adult, 1 child
1 adult (female)	1 adult, 2+ children
2 adults	3+ adults
2+ adults, 1+ children	

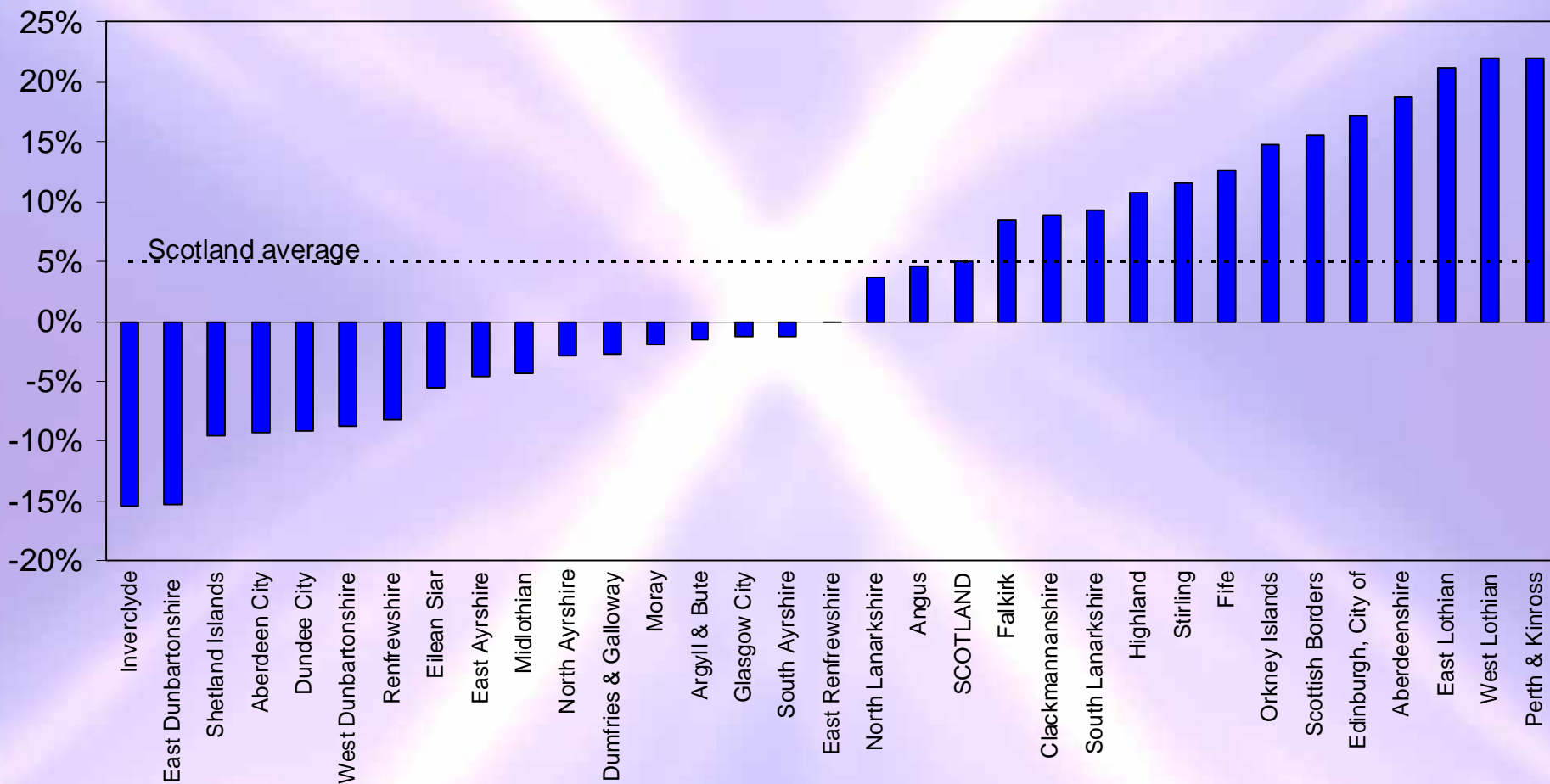
- 10 age groups for the head of household:

16-24, 25-29, 30-34, 35-44, 45-54,  
55-59, 60-64, 65-74, 75-84, 85+

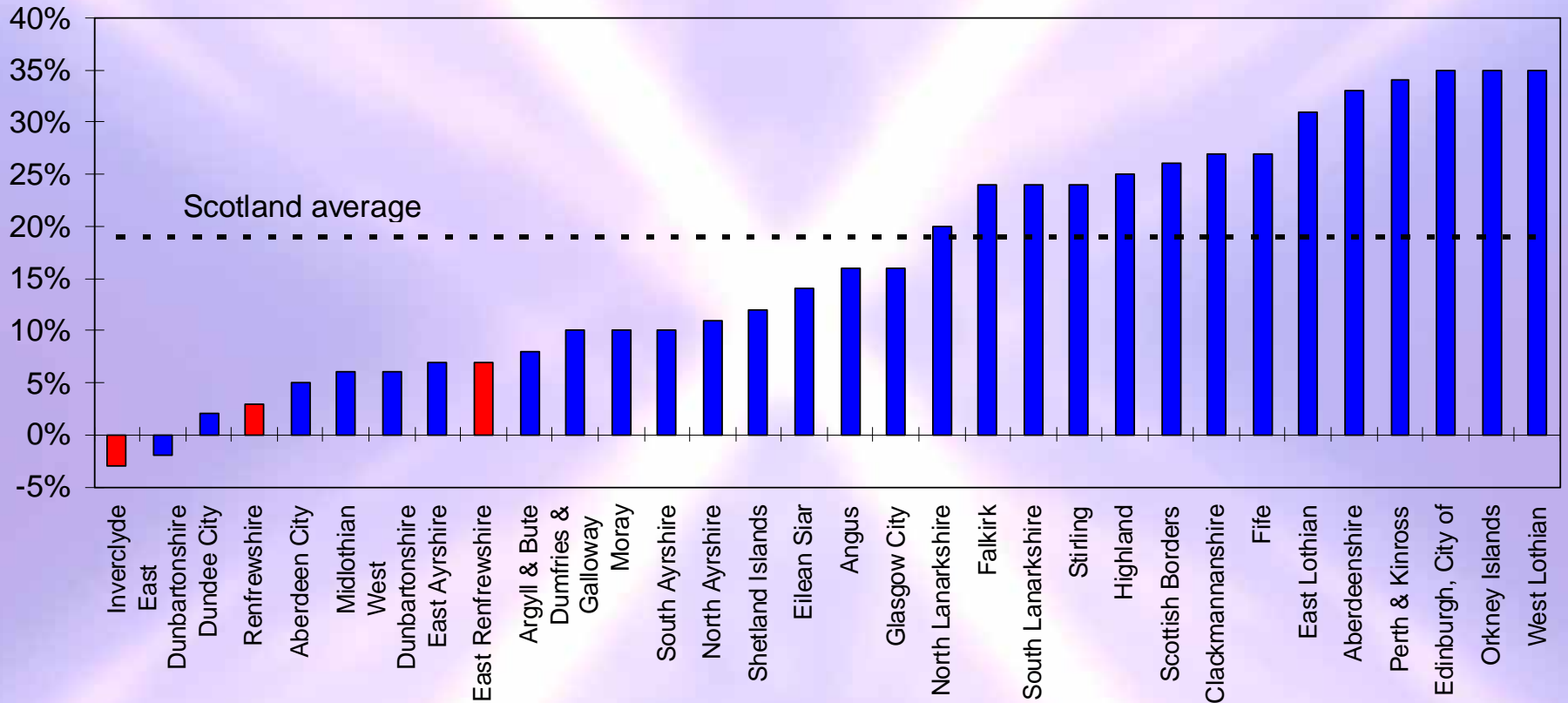


# Population projections 2006-2031

## *Average 5% increase in population; wide geographic variations*

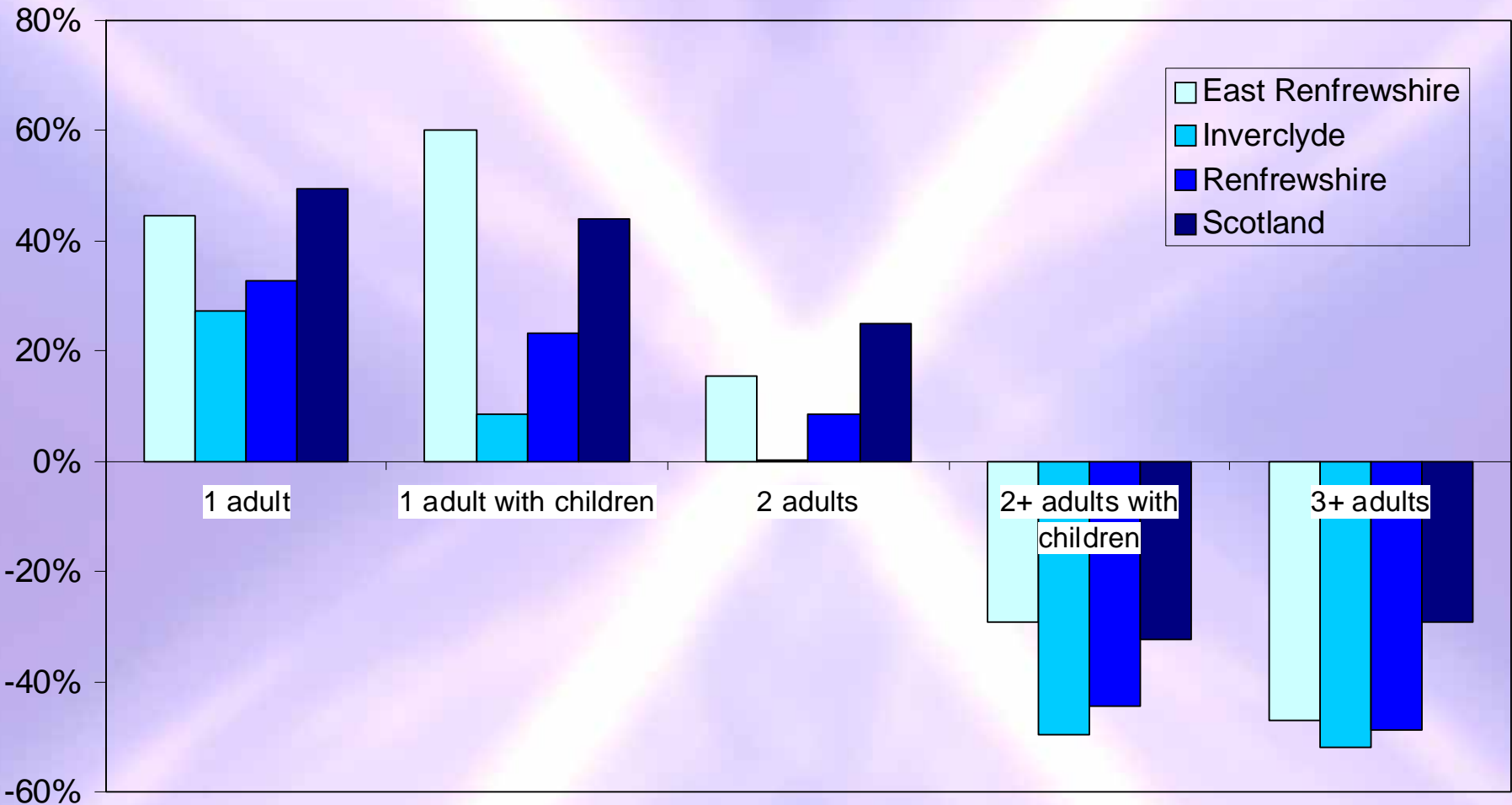


# Projected percentage change in households, 2006-2031



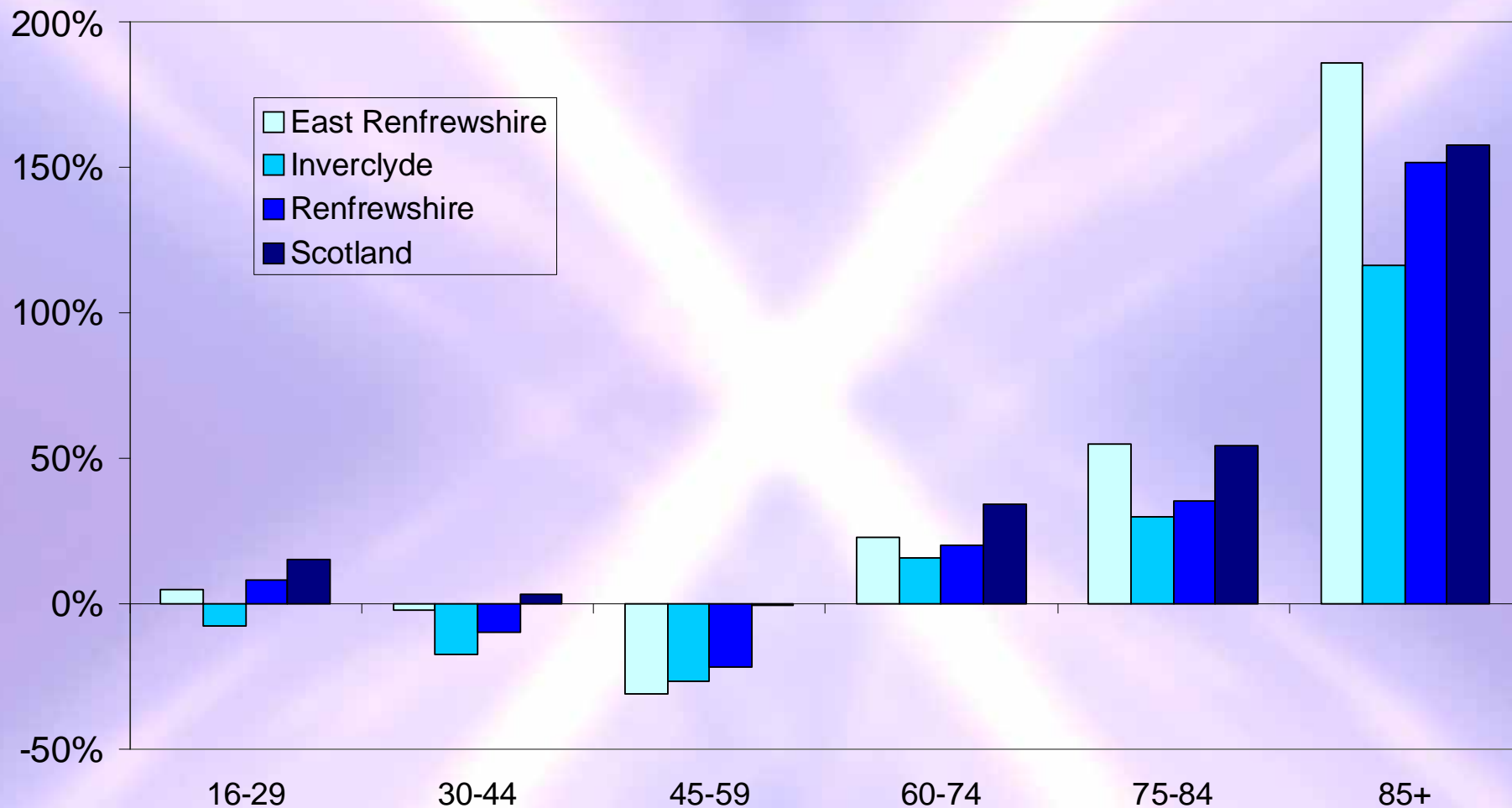


# Projected percentage change in household types, 2006-2031



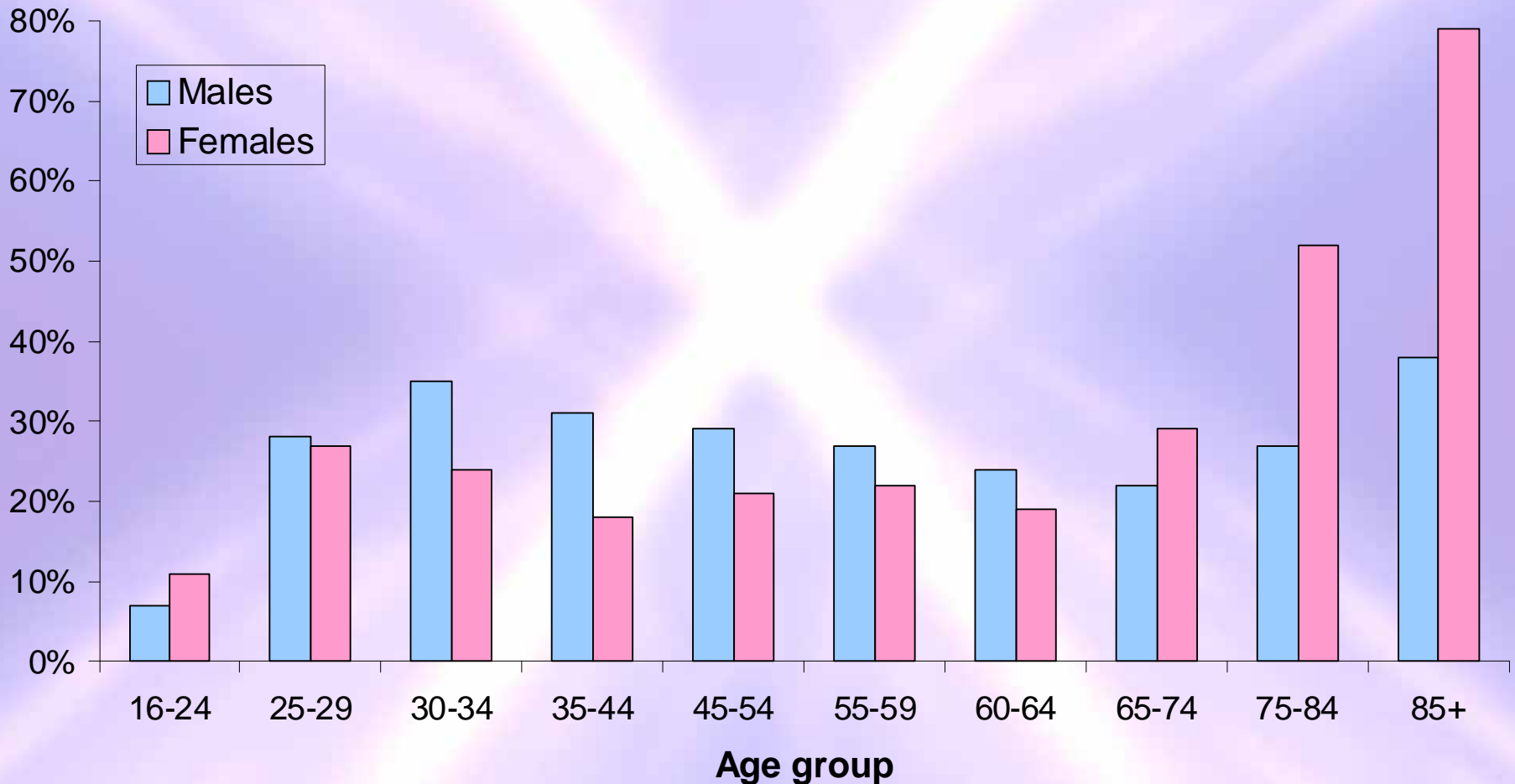


# Projected percentage change in households by age group, 2006-2031





# Percentage of people living alone, 2031: *1 in 4 will live alone*



# Interpreting these projections

- GROS projections are based on past trends.
- They don't take account of:
  - Future policy initiatives
  - Economic predictions
  - Planned housing developments
  - Potential discrepancies between housing supply and demand, or affordability



# Small area statistics

Scottish Neighbourhood Statistics

[www.sns.gov.uk](http://www.sns.gov.uk)



General Register Office  
*for*  
SCOTLAND  
*information about Scotland's people*

# Data from the Assessors' Portal

- Number of dwellings
- Council Tax band
- Type of dwelling
- Number of rooms per dwelling
- Density of housing



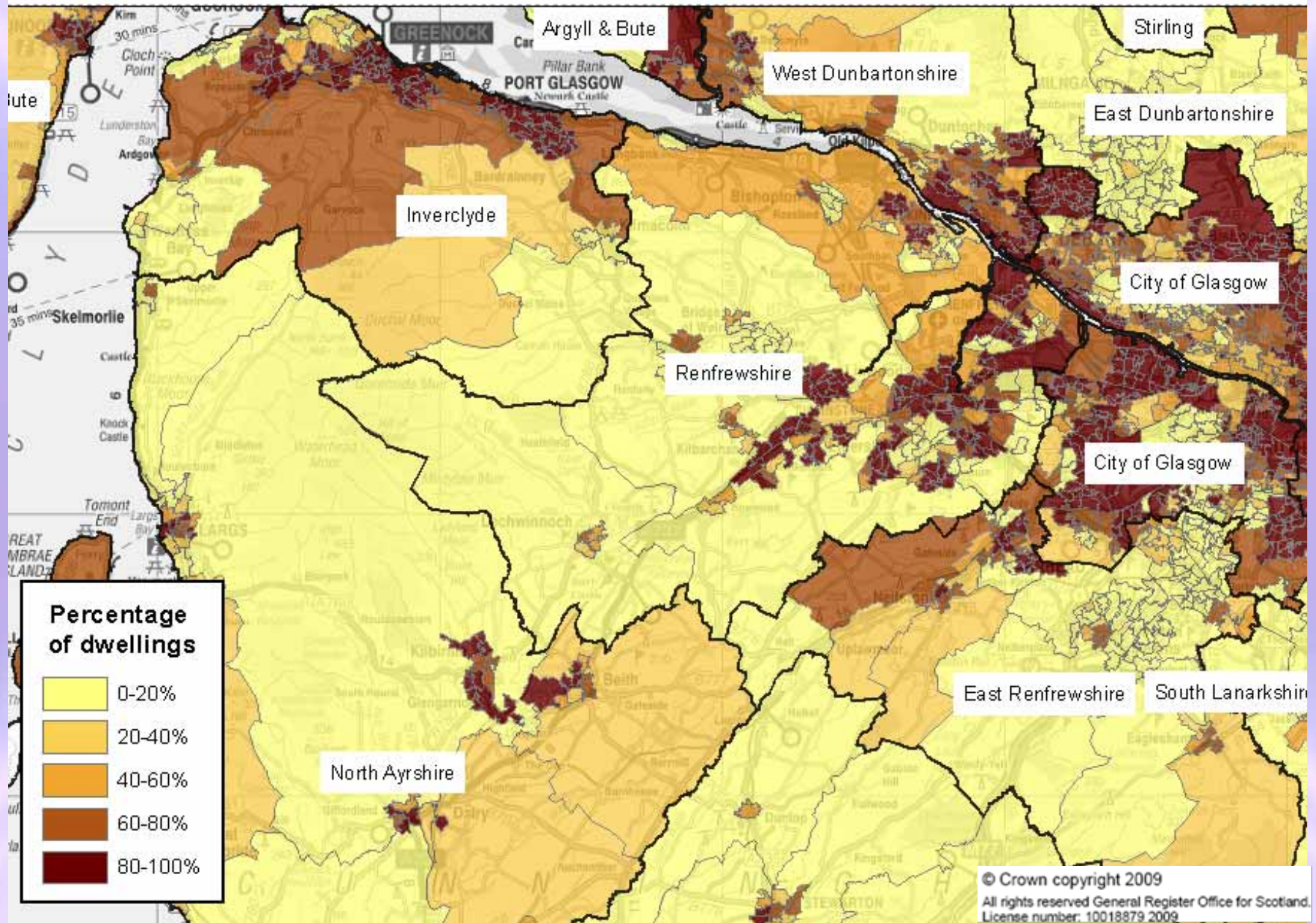
# Data from Council Tax systems

- Percentage of dwellings which are:
  - Occupied
  - Vacant
  - Second homes
  - ‘Single adult’ Council Tax discounts
  - Occupied but exempt from paying Council Tax (e.g., all-student households).





# Percentage of dwellings in the lower Council Tax bands (A-C), in each data zone









# Feel free to contact us!

- Household estimates and projections:  
[www.gro-scotland.gov.uk/statistics/household-estimates-projections/index.html](http://www.gro-scotland.gov.uk/statistics/household-estimates-projections/index.html)
- Scottish Neighbourhood Statistics:  
[www.sns.gov.uk](http://www.sns.gov.uk)
- Esther.Roughsedge@gro-scotland.gsi.gov.uk
- 0131-3144-251

